

Data Path : Z:\voasrv\HPCHEM1\MSVOA_X\Data\VX103125\
 Data File : VX048439.D
 Acq On : 31 Oct 2025 17:33
 Operator : JC/MD
 Sample : Q3507-01
 Misc : 5.0mL/MSVOA_X/WATER
 ALS Vial : 25 Sample Multiplier: 1

Instrument :
 MSVOA_X
 ClientSampleId :
 SW-1

Quant Time: Oct 31 23:09:13 2025
 Quant Method : Z:\voasrv\HPCHEM1\MSVOA_X\Method\82X102925W.M
 Quant Title : SW846 8260
 QLast Update : Thu Oct 30 02:37:17 2025
 Response via : Initial Calibration

Compound	R.T.	QIon	Response	Conc	Units	Dev(Min)

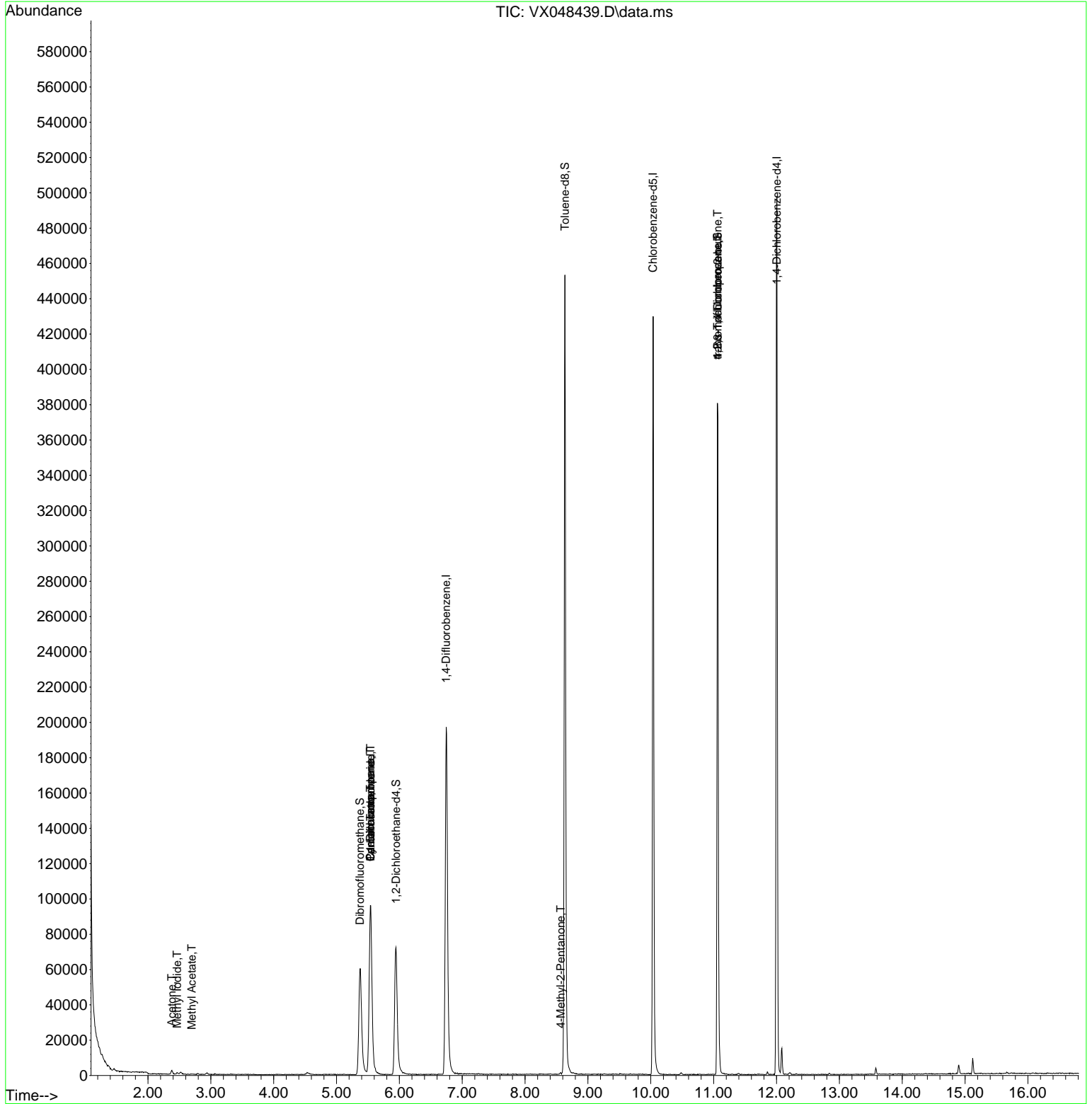
Internal Standards						
1) Pentafluorobenzene	5.544	168	104739	50.000	ug/l	0.00
34) 1,4-Difluorobenzene	6.745	114	226642	50.000	ug/l	0.00
63) Chlorobenzene-d5	10.037	117	210025	50.000	ug/l	0.00
72) 1,4-Dichlorobenzene-d4	12.006	152	116091	50.000	ug/l	0.00
System Monitoring Compounds						
33) 1,2-Dichloroethane-d4	5.946	65	80310	53.316	ug/l	0.00
Spiked Amount	50.000	Range 78 - 117	Recovery	=	106.640%	
35) Dibromofluoromethane	5.373	113	59966	46.407	ug/l	0.00
Spiked Amount	50.000	Range 75 - 124	Recovery	=	92.820%	
50) Toluene-d8	8.635	98	276642	48.500	ug/l	0.00
Spiked Amount	50.000	Range 92 - 112	Recovery	=	97.000%	
62) 4-Bromofluorobenzene	11.061	95	115745	54.245	ug/l	0.00
Spiked Amount	50.000	Range 83 - 123	Recovery	=	108.500%	
Target Compounds						
						Qvalue
10) Methyl Iodide	2.465	142	1012	0.210	ug/l #	93
16) Acetone	2.380	43	3042	8.910	ug/l	94
18) Methyl Acetate	2.697	43	431	0.377	ug/l #	54
31) Cyclohexane	5.538	56	1800	0.865	ug/l #	1
36) 1,1-Dichloropropene	5.538	75	7712	3.554	ug/l #	47
38) Carbon Tetrachloride	5.544	117	10343	4.128	ug/l #	16
51) 4-Methyl-2-Pentanone	8.568	43	668	0.393	ug/l #	38
76) 1,2,3-Trichloropropane	11.061	75	56392	33.777	ug/l #	33
81) trans-1,4-Dichloro-2-b...	11.061	75	56392	116.889	ug/l #	10

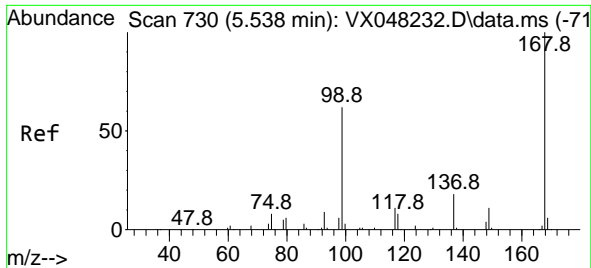
(#) = qualifier out of range (m) = manual integration (+) = signals summed

Data Path : Z:\voasrv\HPCHEM1\MSVOA_X\Data\VX103125\
 Data File : VX048439.D
 Acq On : 31 Oct 2025 17:33
 Operator : JC/MD
 Sample : Q3507-01
 Misc : 5.0mL/MSVOA_X/WATER
 ALS Vial : 25 Sample Multiplier: 1

Instrument :
 MSVOA_X
 ClientSampleId :
 SW-1

Quant Time: Oct 31 23:09:13 2025
 Quant Method : Z:\voasrv\HPCHEM1\MSVOA_X\Method\82X102925W.M
 Quant Title : SW846 8260
 QLast Update : Thu Oct 30 02:37:17 2025
 Response via : Initial Calibration

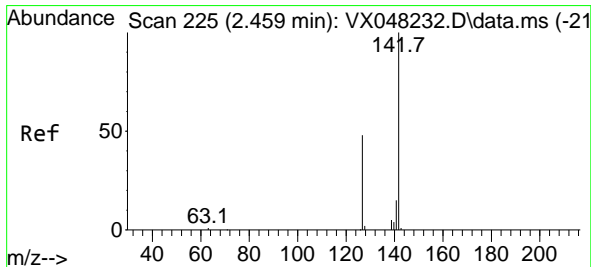
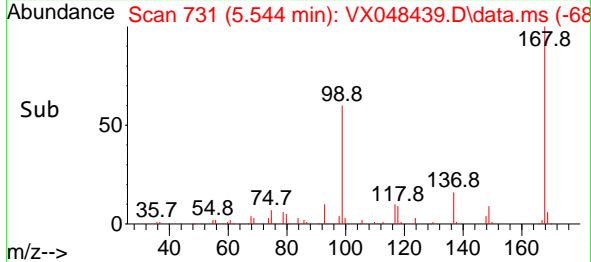
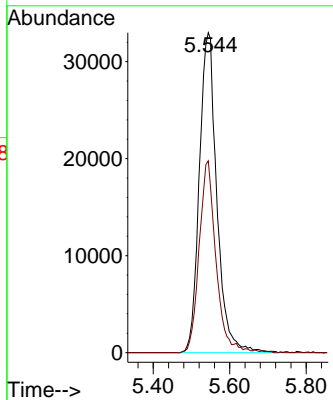
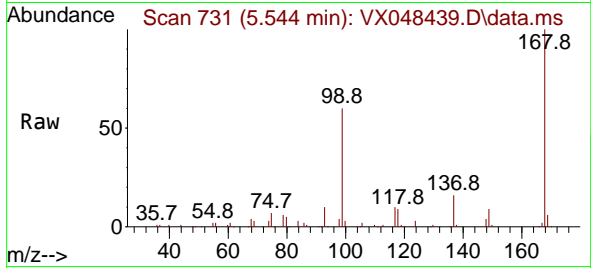




#1
 Pentafluorobenzene
 Concen: 50.000 ug/l
 RT: 5.544 min Scan# 71
 Delta R.T. 0.007 min
 Lab File: VX048439.D
 Acq: 31 Oct 2025 17:33

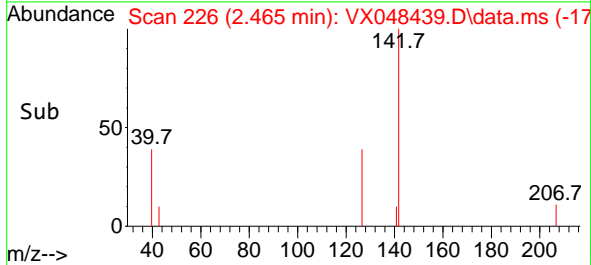
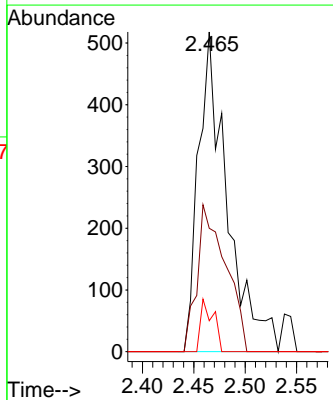
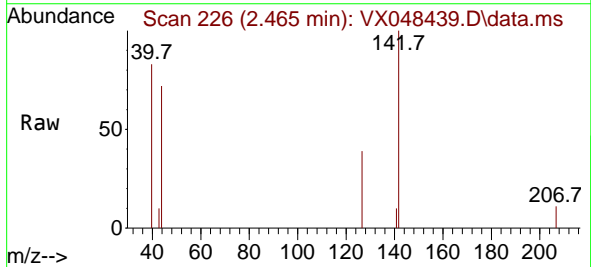
Instrument :
 MSVOA_X
 ClientSampleId :
 SW-1

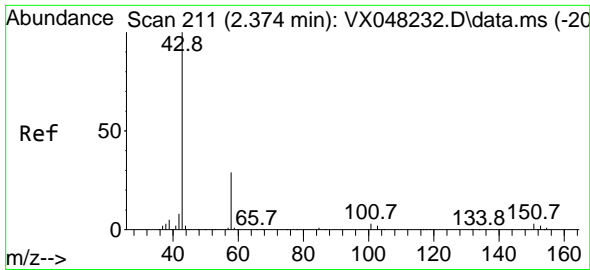
Tgt Ion:168 Resp: 104739
 Ion Ratio Lower Upper
 168 100
 99 59.9 46.4 69.6



#10
 Methyl Iodide
 Concen: 0.210 ug/l
 RT: 2.465 min Scan# 226
 Delta R.T. 0.006 min
 Lab File: VX048439.D
 Acq: 31 Oct 2025 17:33

Tgt Ion:142 Resp: 1012
 Ion Ratio Lower Upper
 142 100
 127 45.6 38.5 57.7
 141 7.2 11.6 17.4#

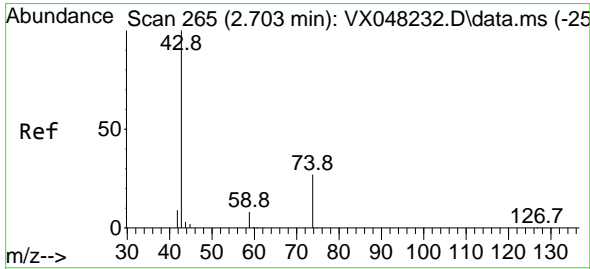
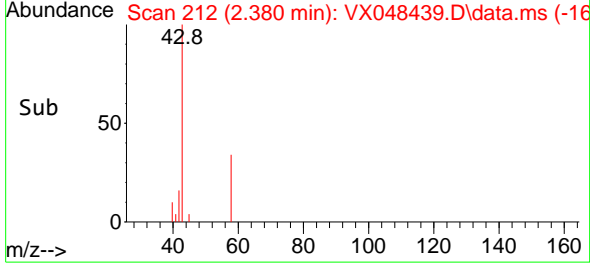
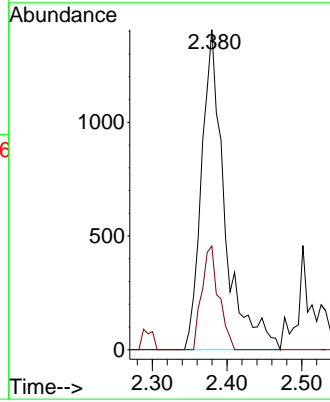
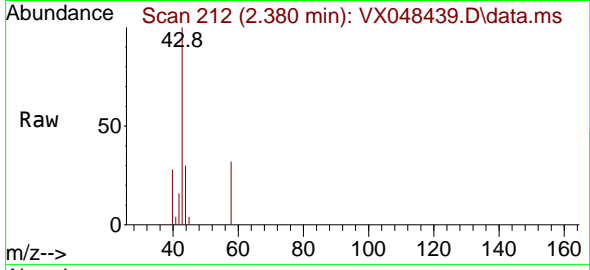




#16
 Acetone
 Concen: 8.910 ug/l
 RT: 2.380 min Scan# 211
 Delta R.T. 0.006 min
 Lab File: VX048439.D
 Acq: 31 Oct 2025 17:33

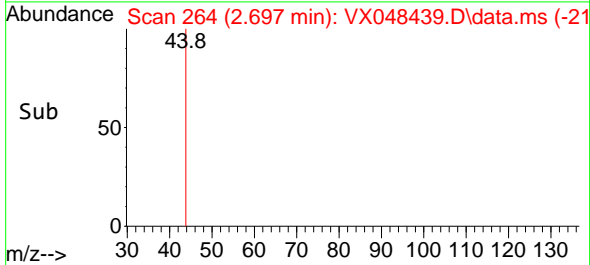
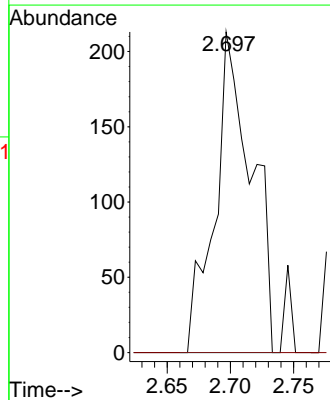
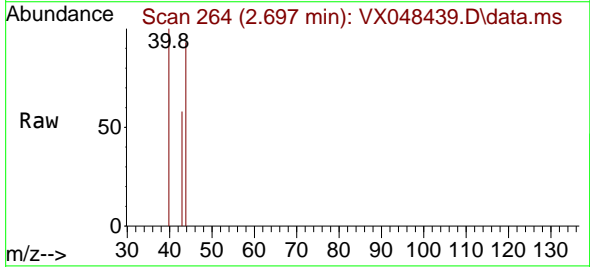
Instrument :
 MSVOA_X
 ClientSampleId :
 SW-1

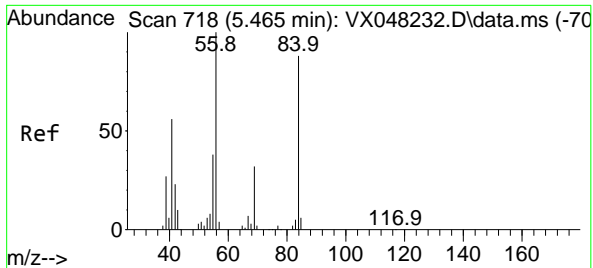
Tgt Ion: 43 Resp: 3042
 Ion Ratio Lower Upper
 43 100
 58 32.4 23.4 35.2



#18
 Methyl Acetate
 Concen: 0.377 ug/l
 RT: 2.697 min Scan# 264
 Delta R.T. 0.000 min
 Lab File: VX048439.D
 Acq: 31 Oct 2025 17:33

Tgt Ion: 43 Resp: 431
 Ion Ratio Lower Upper
 43 100
 74 0.0 17.5 26.3#

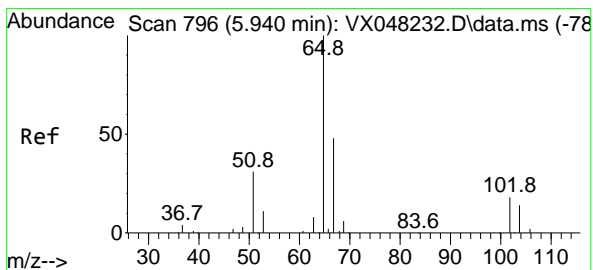
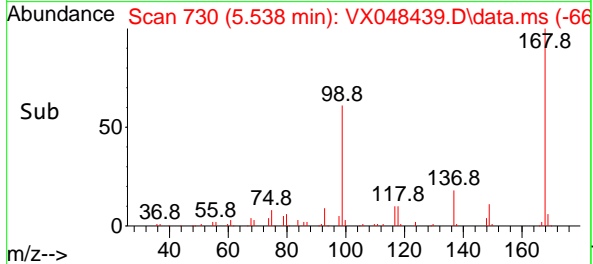
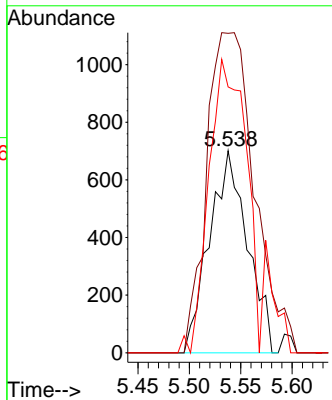
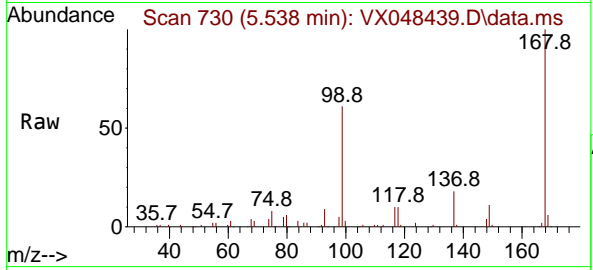




#31
 Cyclohexane
 Concen: 0.865 ug/l
 RT: 5.538 min Scan# 718
 Delta R.T. 0.073 min
 Lab File: VX048439.D
 Acq: 31 Oct 2025 17:33

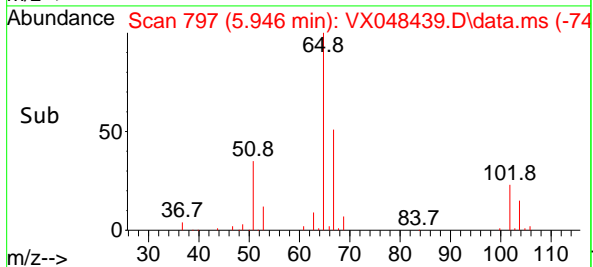
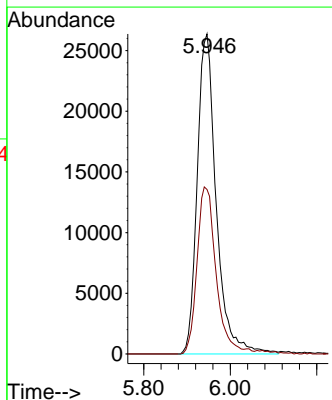
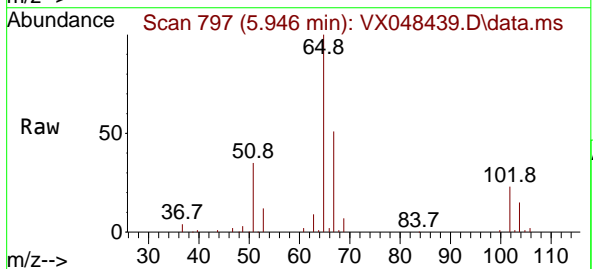
Instrument : MSVOA_X
 ClientSampleId : SW-1

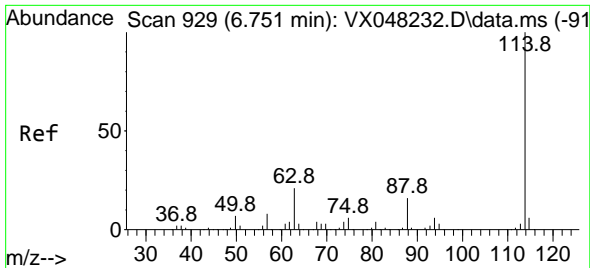
Tgt Ion: 56 Resp: 1800
 Ion Ratio Lower Upper
 56 100
 69 158.2 23.0 34.6#
 84 131.7 64.6 97.0#



#33
 1,2-Dichloroethane-d4
 Concen: 53.316 ug/l
 RT: 5.946 min Scan# 797
 Delta R.T. 0.006 min
 Lab File: VX048439.D
 Acq: 31 Oct 2025 17:33

Tgt Ion: 65 Resp: 80310
 Ion Ratio Lower Upper
 65 100
 67 52.5 0.0 105.0

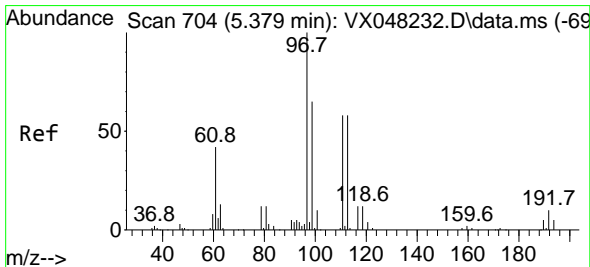
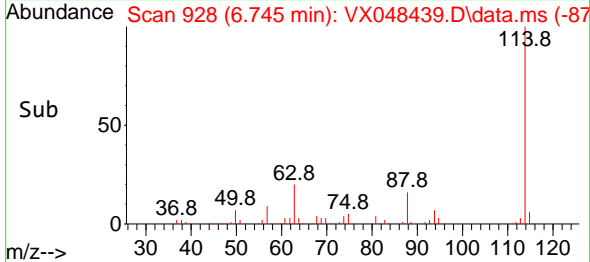
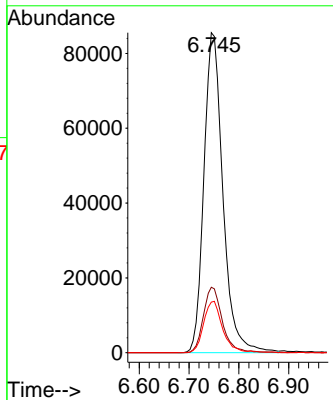
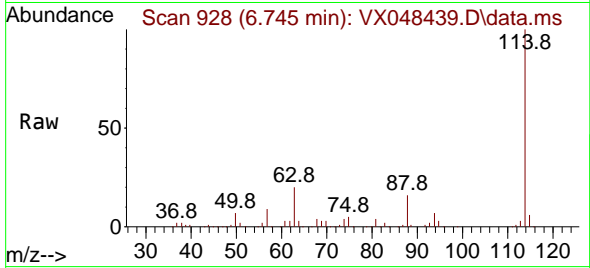




#34
 1,4-Difluorobenzene
 Concen: 50.000 ug/l
 RT: 6.745 min Scan# 91
 Delta R.T. 0.000 min
 Lab File: VX048439.D
 Acq: 31 Oct 2025 17:33

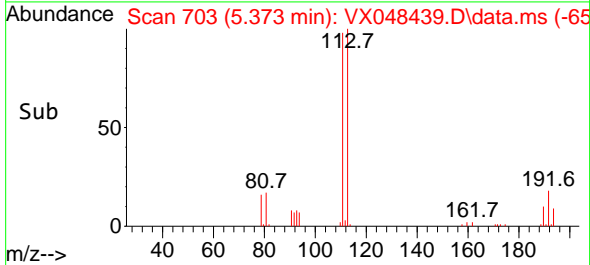
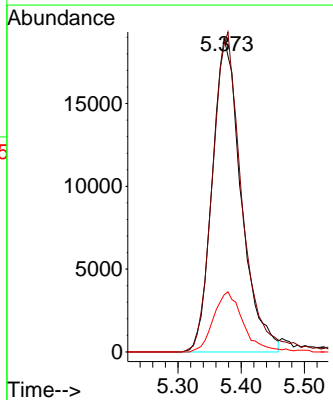
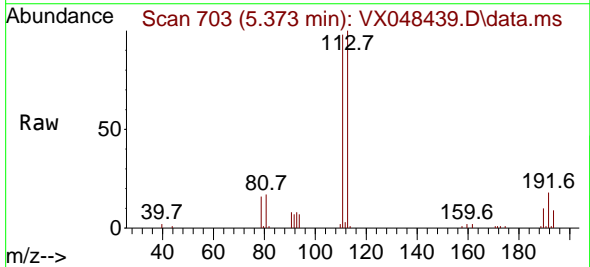
Instrument :
 MSVOA_X
 ClientSampleId :
 SW-1

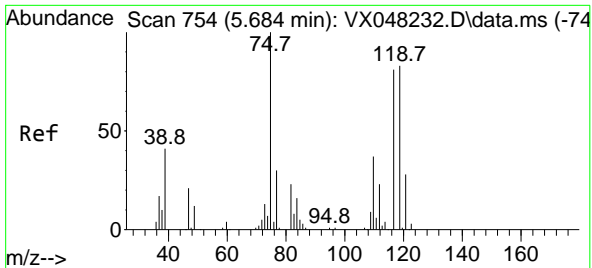
Tgt Ion:114 Resp: 226642
 Ion Ratio Lower Upper
 114 100
 63 20.4 0.0 43.2
 88 16.6 0.0 33.6



#35
 Dibromofluoromethane
 Concen: 46.407 ug/l
 RT: 5.373 min Scan# 703
 Delta R.T. 0.000 min
 Lab File: VX048439.D
 Acq: 31 Oct 2025 17:33

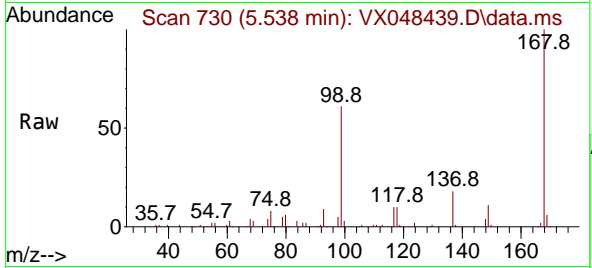
Tgt Ion:113 Resp: 59966
 Ion Ratio Lower Upper
 113 100
 111 104.0 82.2 123.4
 192 19.7 15.1 22.7





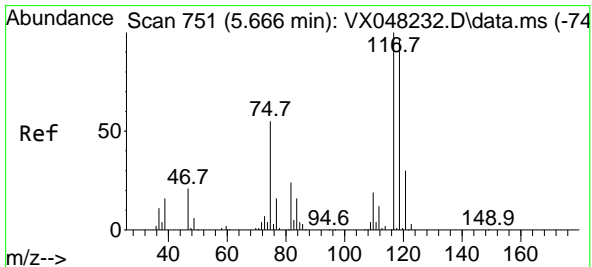
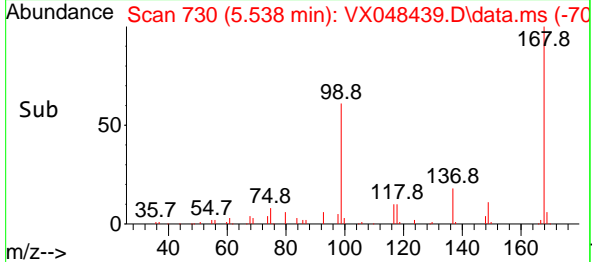
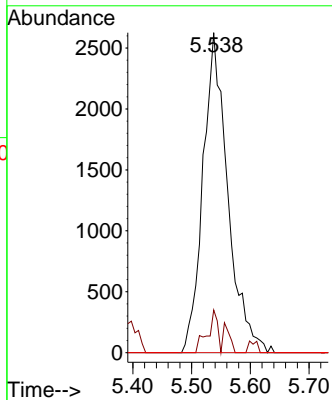
#36
 1,1-Dichloropropene
 Concen: 3.554 ug/l
 RT: 5.538 min Scan# 711
 Delta R.T. -0.146 min
 Lab File: VX048439.D
 Acq: 31 Oct 2025 17:33

Instrument : MSVOA_X
 ClientSampleId : SW-1



Tgt Ion: 75 Resp: 7712

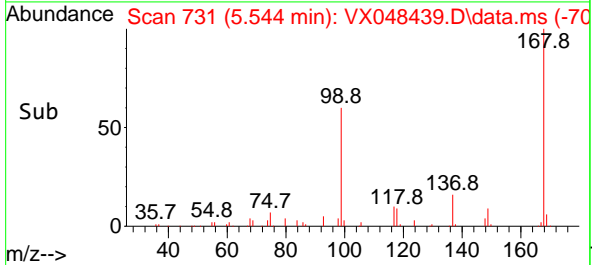
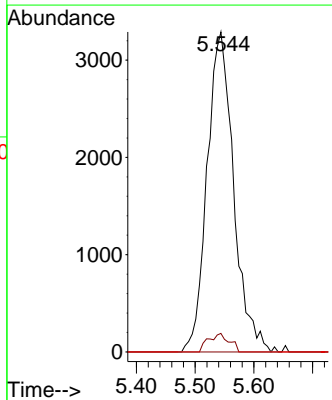
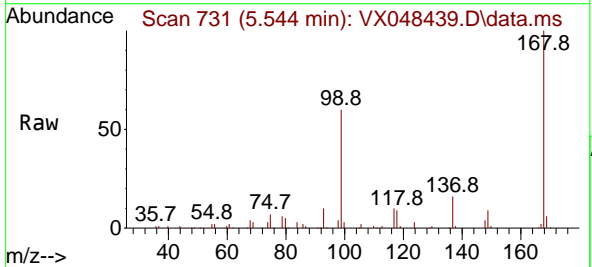
Ion	Ratio	Lower	Upper
75	100		
110	5.5	17.7	53.1#
77	0.0	24.3	36.5#

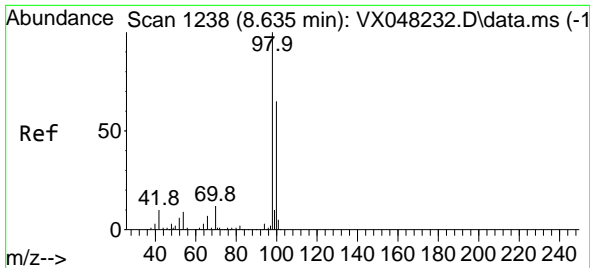


#38
 Carbon Tetrachloride
 Concen: 4.128 ug/l
 RT: 5.544 min Scan# 731
 Delta R.T. -0.122 min
 Lab File: VX048439.D
 Acq: 31 Oct 2025 17:33

Tgt Ion: 117 Resp: 10343

Ion	Ratio	Lower	Upper
117	100		
119	5.8	77.2	115.8#
121	0.0	24.8	37.2#

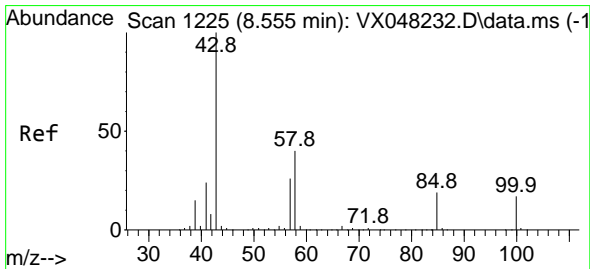
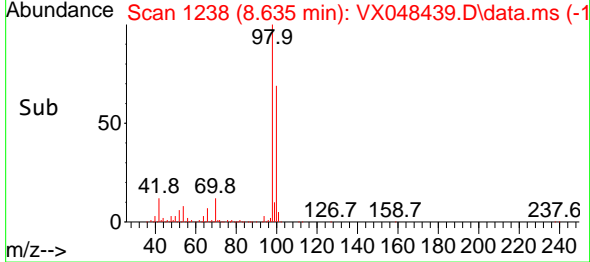
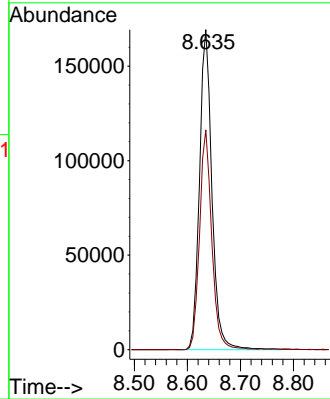
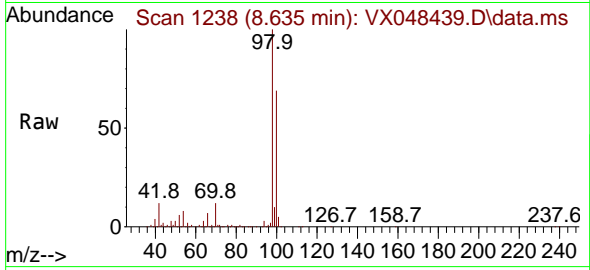




#50
 Toluene-d8
 Concen: 48.500 ug/l
 RT: 8.635 min Scan# 11
 Delta R.T. 0.000 min
 Lab File: VX048439.D
 Acq: 31 Oct 2025 17:33

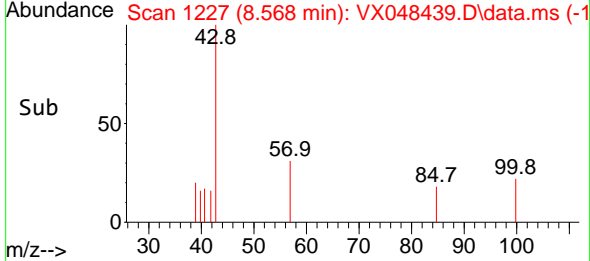
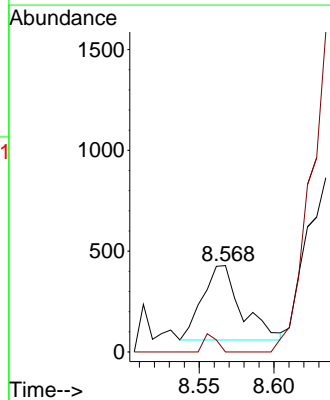
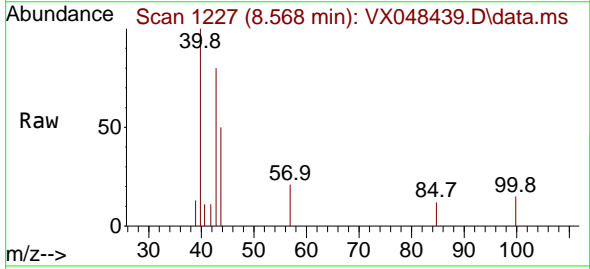
Instrument :
 MSVOA_X
 ClientSampleId :
 SW-1

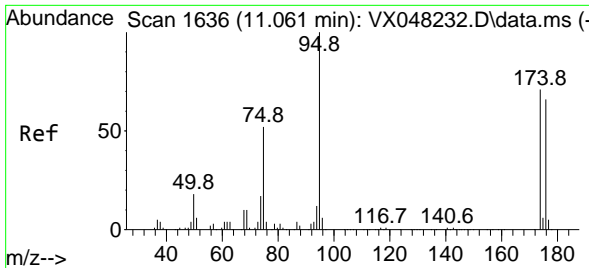
Tgt Ion: 98 Resp: 276642
 Ion Ratio Lower Upper
 98 100
 100 67.4 53.0 79.4



#51
 4-Methyl-2-Pentanone
 Concen: 0.393 ug/l
 RT: 8.568 min Scan# 1227
 Delta R.T. 0.012 min
 Lab File: VX048439.D
 Acq: 31 Oct 2025 17:33

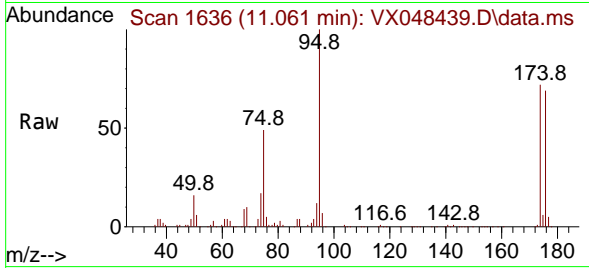
Tgt Ion: 43 Resp: 668
 Ion Ratio Lower Upper
 43 100
 58 0.0 29.5 44.3#



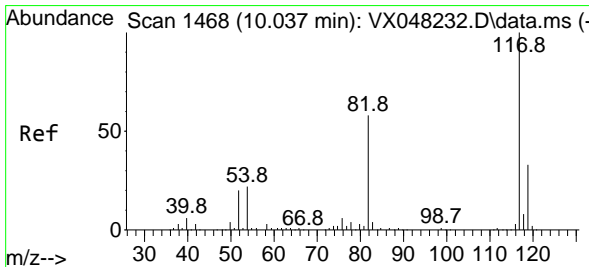
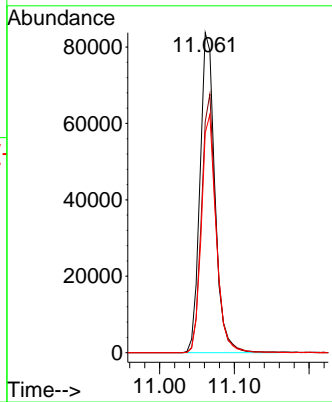
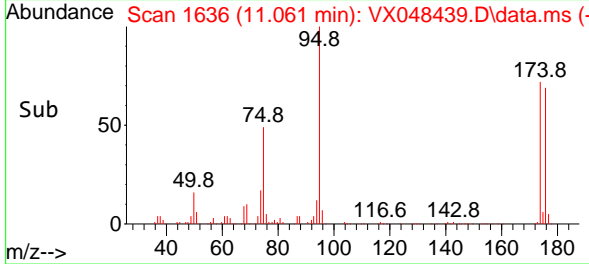


#62
 4-Bromofluorobenzene
 Concen: 54.245 ug/l
 RT: 11.061 min Scan# 11
 Delta R.T. 0.000 min
 Lab File: VX048439.D
 Acq: 31 Oct 2025 17:33

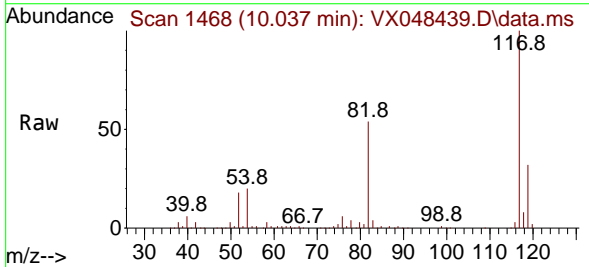
Instrument :
 MSVOA_X
 ClientSampleId :
 SW-1



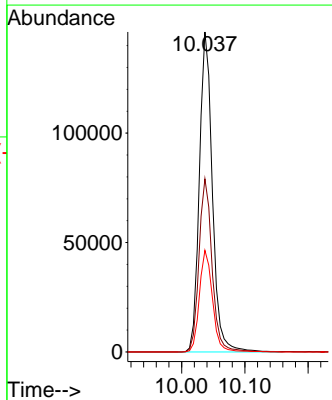
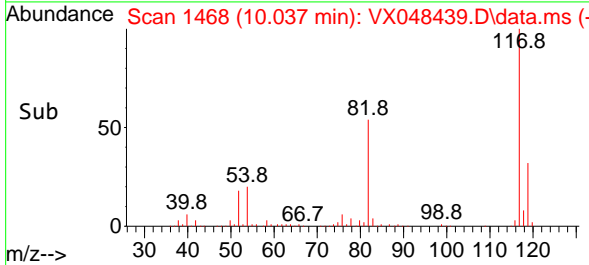
Tgt Ion: 95 Resp: 115745
 Ion Ratio Lower Upper
 95 100
 174 78.9 0.0 147.8
 176 74.2 0.0 142.8

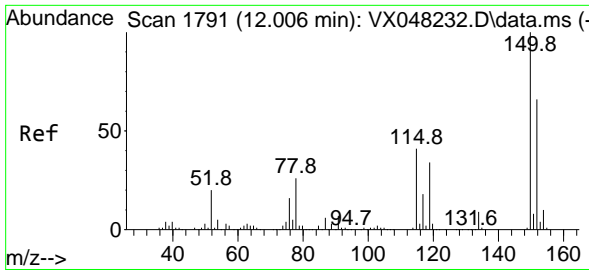


#63
 Chlorobenzene-d5
 Concen: 50.000 ug/l
 RT: 10.037 min Scan# 1468
 Delta R.T. 0.000 min
 Lab File: VX048439.D
 Acq: 31 Oct 2025 17:33



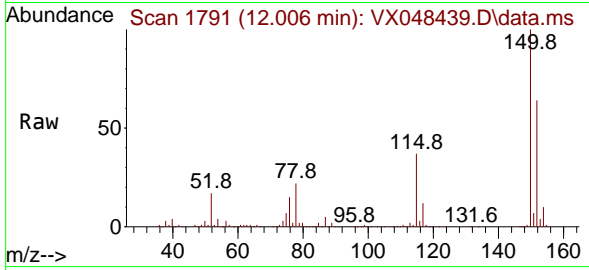
Tgt Ion: 117 Resp: 210025
 Ion Ratio Lower Upper
 117 100
 82 54.1 46.5 69.7
 119 31.8 25.9 38.9



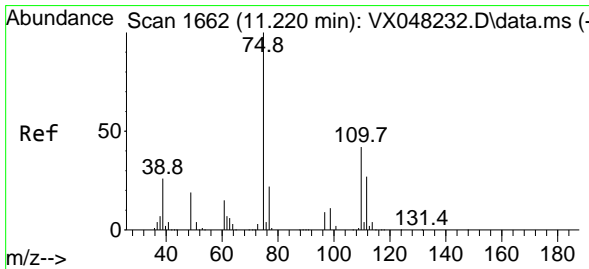
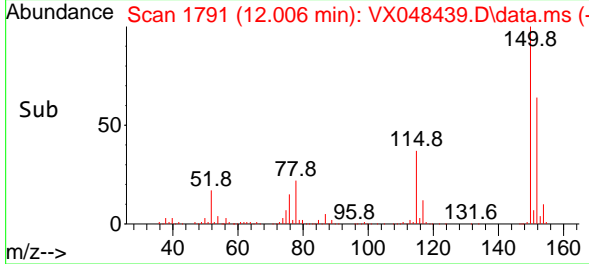
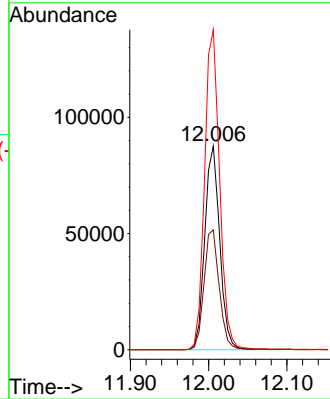


#72
 1,4-Dichlorobenzene-d4
 Concen: 50.000 ug/l
 RT: 12.006 min Scan# 1
 Delta R.T. 0.000 min
 Lab File: VX048439.D
 Acq: 31 Oct 2025 17:33

Instrument :
 MSVOA_X
 ClientSampleId :
 SW-1

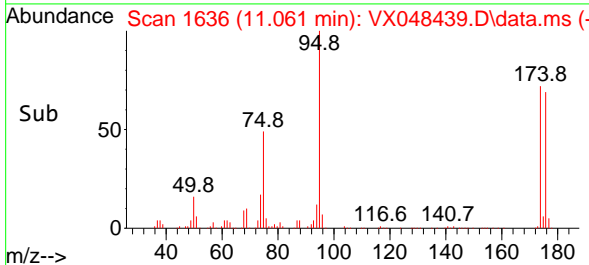
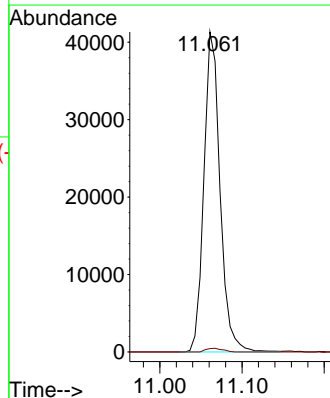
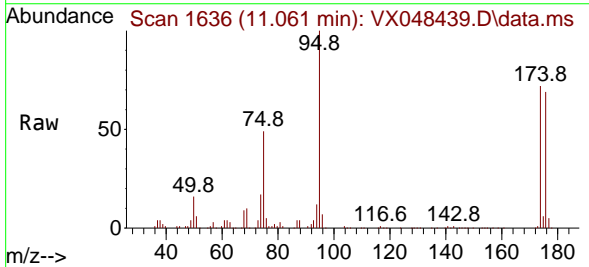


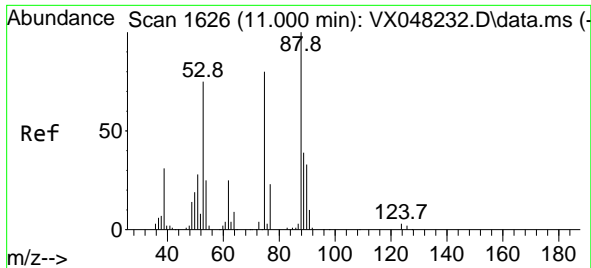
Tgt Ion:152 Resp: 116091
 Ion Ratio Lower Upper
 152 100
 115 59.8 43.1 129.4
 150 158.0 0.0 353.0



#76
 1,2,3-Trichloropropane
 Concen: 33.777 ug/l
 RT: 11.061 min Scan# 1636
 Delta R.T. -0.158 min
 Lab File: VX048439.D
 Acq: 31 Oct 2025 17:33

Tgt Ion: 75 Resp: 56392
 Ion Ratio Lower Upper
 75 100
 77 1.2 22.4 67.2#





#81
 trans-1,4-Dichloro-2-butene
 Concen: 116.889 ug/l
 RT: 11.061 min Scan# 10
 Delta R.T. 0.061 min
 Lab File: VX048439.D
 Acq: 31 Oct 2025 17:33

Instrument :
 MSVOA_X
 ClientSampleId :
 SW-1

Tgt Ion: 75 Resp: 56392

Ion	Ratio	Lower	Upper
75	100		
53	0.0	79.5	119.3#
89	0.0	36.8	55.2#

