

Data Path : Z:\VOASRV\HPCHEM1\MSVOA X\DATA\VX110118\  
 Data File : VX005732.D  
 Acq On : 01 Nov 2018 16:31  
 Operator : JC/MD  
 Sample : J5729-03  
 Misc : 5.0mL/MSVOA X/WATER  
 ALS Vial : 14 Sample Multiplier: 1

Instrument :  
 MSVOA\_X  
 ClientSampled :

Quant Time: Nov 01 16:54:19 2018  
 Quant Method : Z:\VOASRV\HPCHEM1\MSVOA\_X\METHOD\82X103118W.M  
 Quant Title : SW846 8260  
 QLast Update : Wed Oct 31 18:23:06 2018  
 Response via : Initial Calibration

Internal Standards	R.T.	QIon	Response	Conc	Units	Dev(Min)
1) Pentafluorobenzene	5.67	168	115468	50.00	ug/l	0.00
34) 1,4-Difluorobenzene	6.87	114	194727	50.00	ug/l	0.00
63) Chlorobenzene-d5	10.12	117	176369	50.00	ug/l	0.00
72) 1,4-Dichlorobenzene-d4	12.08	152	80406	50.00	ug/l	0.00

## System Monitoring Compounds

33) 1,2-Dichloroethane-d4	6.07	65	89547	53.04	ug/l	0.00
Spiked Amount	50.000		Recovery	=	106.08%	
35) Dibromofluoromethane	5.50	113	67609	50.14	ug/l	0.00
Spiked Amount	50.000		Recovery	=	100.28%	
50) Toluene-d8	8.72	98	246329	52.09	ug/l	0.00
Spiked Amount	50.000		Recovery	=	104.18%	
62) 4-Bromofluorobenzene	11.14	95	82164	47.08	ug/l	0.00
Spiked Amount	50.000		Recovery	=	94.16%	

## Target Compounds

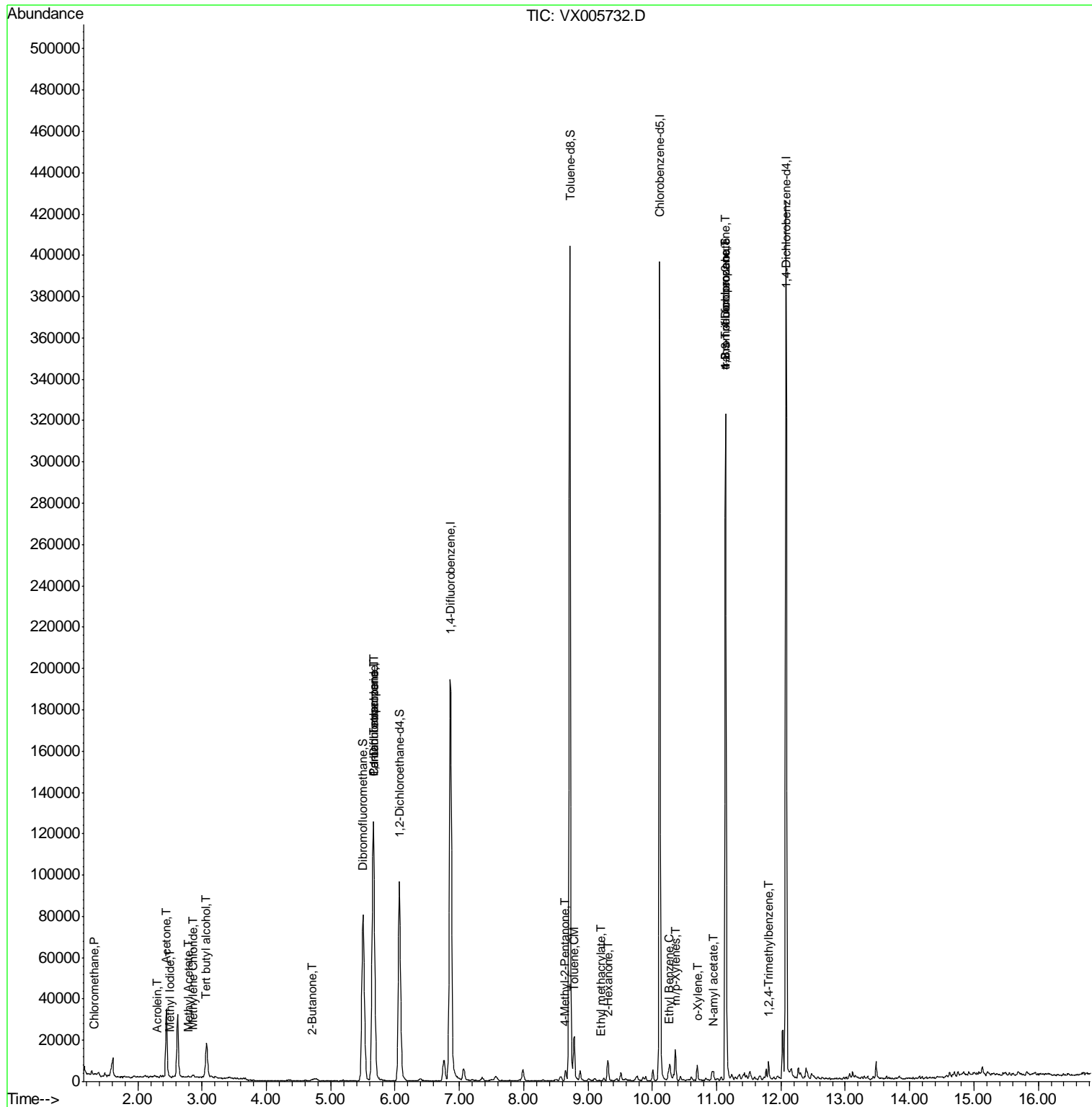
					Qvalue	
3) Chloromethane	1.32	50	360	0.229	ug/l #	79
6) Chloroethane	1.72	64	48	Below	Cal #	42
10) Methyl Iodide	2.51	142	38	1.970	ug/l #	39
11) Tert butyl alcohol	3.07	59	20834	45.444	ug/l	98
13) Acrolein	2.29	56	68	12.380	ug/l #	14
16) Acetone	2.45	43	34007	31.014	ug/l	96
18) Methyl Acetate	2.78	43	1412	0.583	ug/l #	81
20) Methylene Chloride	2.86	84	477	0.328	ug/l #	63
25) 2-Butanone	4.71	43	1763	1.238	ug/l	98
36) 1,1-Dichloropropene	5.67	75	10142	4.888	ug/l #	49
38) Carbon Tetrachloride	5.67	117	12277	6.550	ug/l #	17
51) 4-Methyl-2-Pentanone	8.65	43	2930	1.119	ug/l	90
52) Toluene	8.79	92	6783	2.032	ug/l	97
56) Ethyl methacrylate	9.20	69	20	2.479	ug/l #	1
59) 2-Hexanone	9.31	43	5199	2.439	ug/l	78
67) Ethyl Benzene	10.26	91	2585	0.404	ug/l	94
68) m/p-Xylenes	10.36	106	3267	1.375	ug/l	94
69) o-Xylene	10.70	106	1557	0.685	ug/l	98
74) N-amyl acetate	10.95	43	3782	1.339	ug/l #	44
76) 1,2,3-Trichloropropane	11.14	75	43394	21.669	ug/l #	36
81) trans-1,4-Dichloro-2-buten	11.14	75	43394	70.010	ug/l #	9
84) 1,2,4-Trimethylbenzene	11.81	105	2178	0.479	ug/l	99

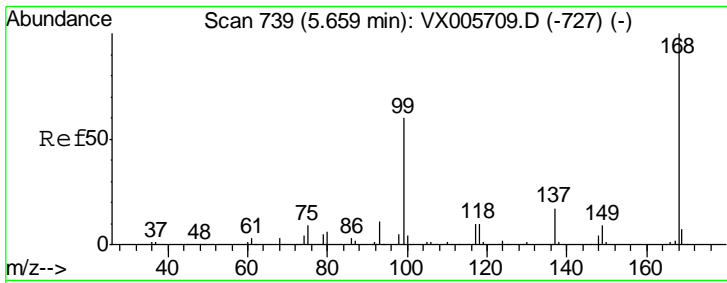
(#) = qualifier out of range (m) = manual integration (+) = signals summed

Data Path : Z:\VOASRV\HPCHEM1\MSVOA X\DATA\VX110118\  
 Data File : VX005732.D  
 Acq On : 01 Nov 2018 16:31  
 Operator : JC/MD  
 Sample : J5729-03  
 Misc : 5.0mL/MSVOA X/WATER  
 ALS Vial : 14 Sample Multiplier: 1

Instrument :  
 MSVOA\_X  
 Client Sampled :

Quant Time: Nov 01 16:54:19 2018  
 Quant Method : Z:\VOASRV\HPCHEM1\MSVOA\_X\METHOD\82X103118W.M  
 Quant Title : SW846 8260  
 QLast Update : Wed Oct 31 18:23:06 2018  
 Response via : Initial Calibration



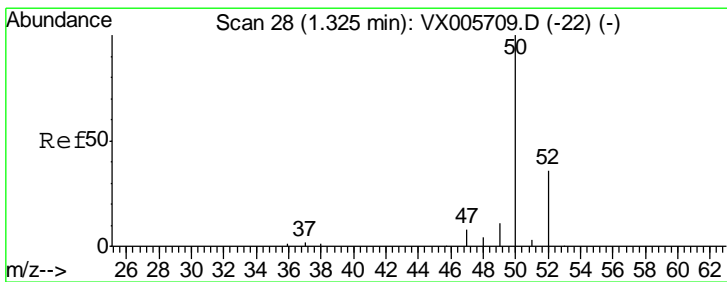
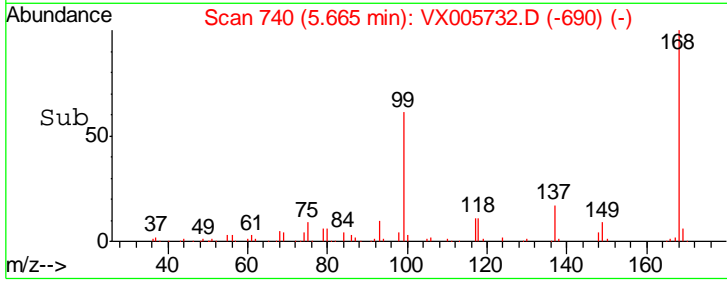
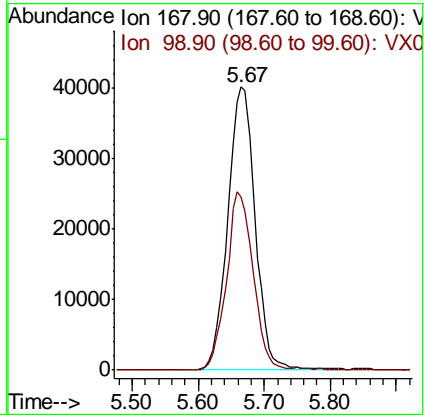
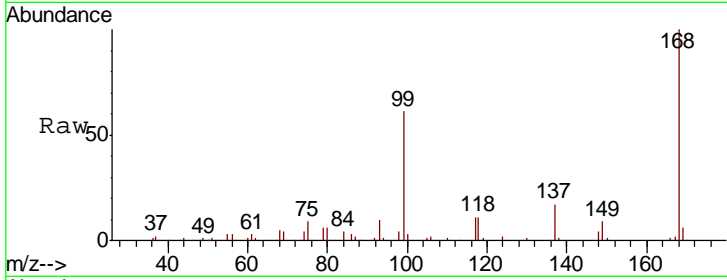


#1  
 Pentafluorobenzene  
 Concen: 50.000 ug/l  
 RT: 5.67 min Scan# 740  
 Delta R.T. 0.01 min  
 Lab File: VX005732.D  
 Acq: 01 Nov 2018 16:31

Instrument : MSVOA\_X  
 ClientSampled :

Tgt Ion: 168 Resp: 115468

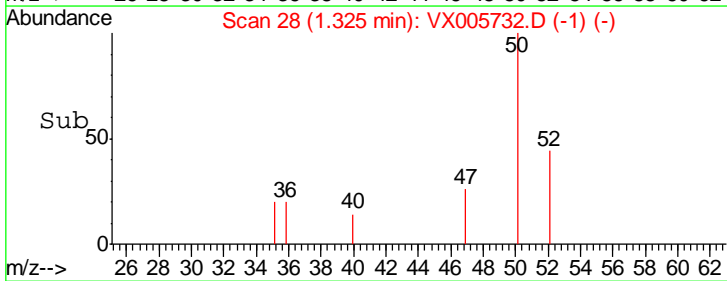
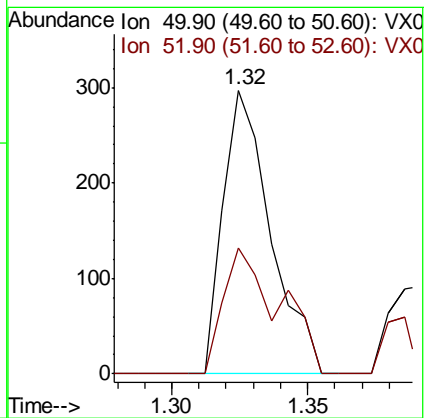
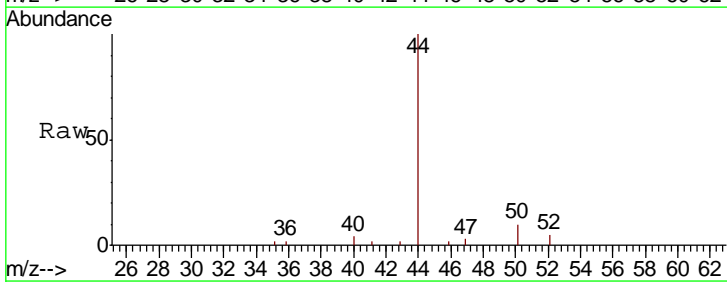
Ion	Ratio	Lower	Upper
168	100		
99	61.0	40.7	61.1

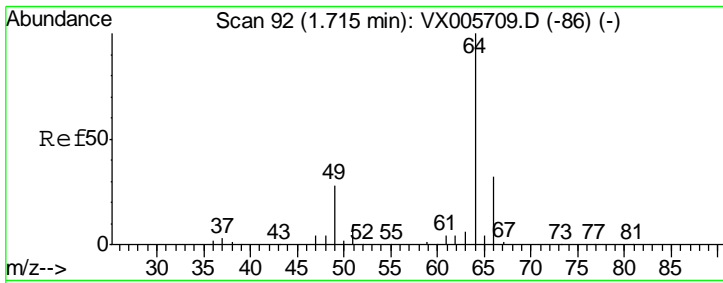


#3  
 Chloromethane  
 Concen: 0.229 ug/l  
 RT: 1.32 min Scan# 28  
 Delta R.T. -0.00 min  
 Lab File: VX005732.D  
 Acq: 01 Nov 2018 16:31

Tgt Ion: 50 Resp: 360

Ion	Ratio	Lower	Upper
50	100		
52	44.4	26.2	39.2#

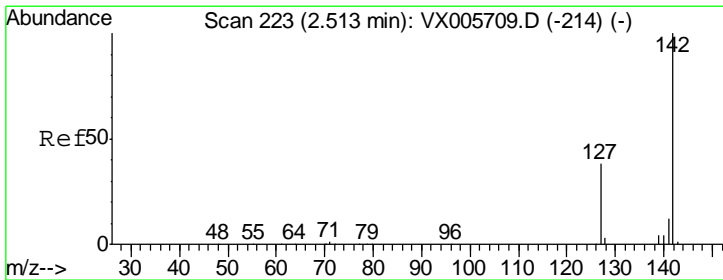
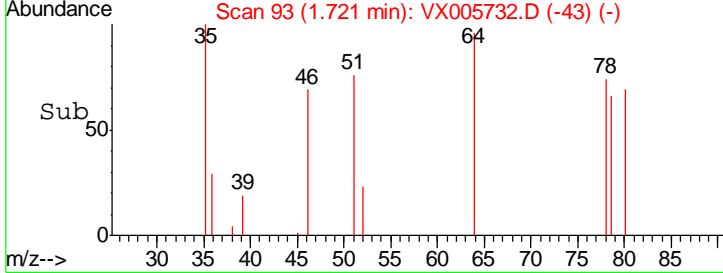
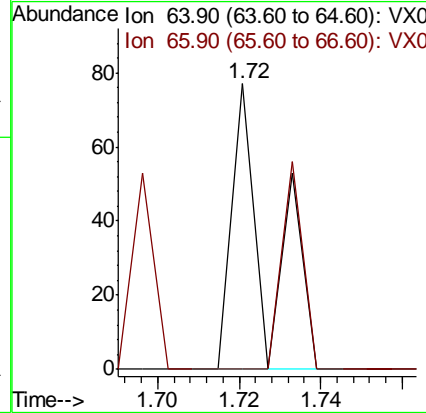
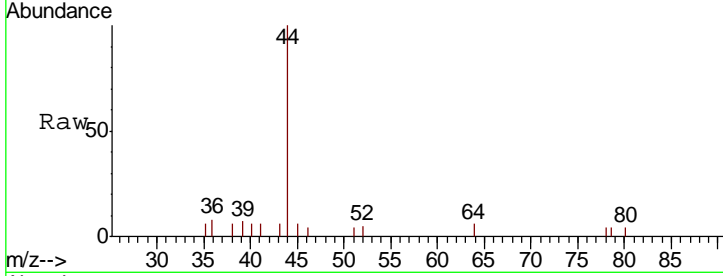




#6  
 Chloroethane  
 Concen: Below Cal  
 RT: 1.72 min Scan# 93  
 Delta R.T. 0.01 min  
 Lab File: VX005732.D  
 Acq: 01 Nov 2018 16:31

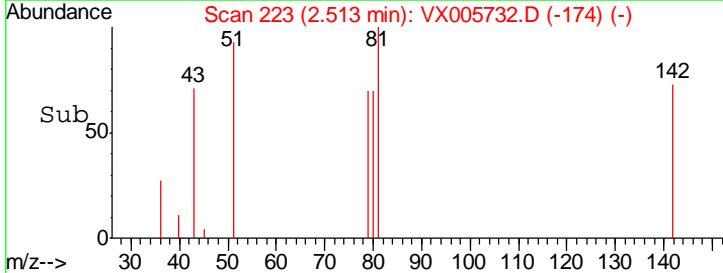
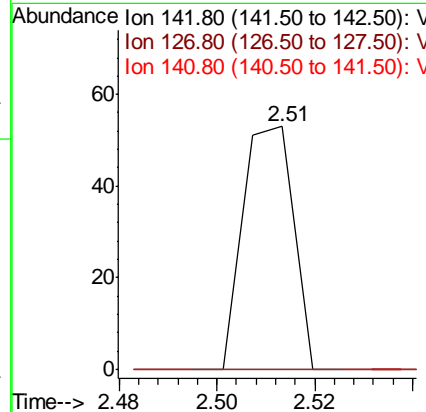
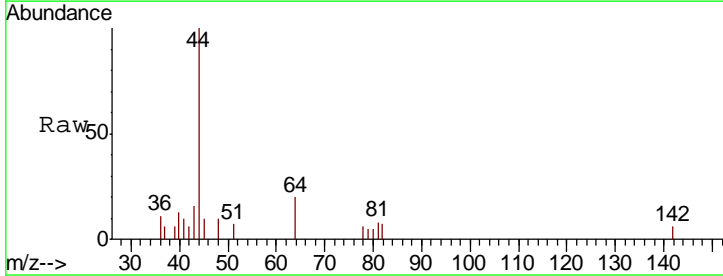
Instrument :  
 MSVOA\_X  
 ClientSampled :

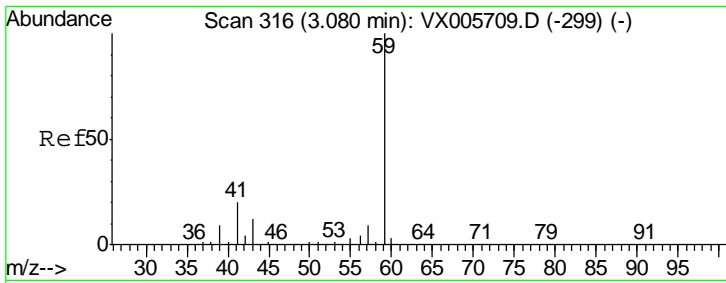
Tgt Ion	Resp	Lower	Upper
64	100		
66	0.0	25.8	38.6#



#10  
 Methyl Iodide  
 Concen: 1.970 ug/l  
 RT: 2.51 min Scan# 223  
 Delta R.T. 0.00 min  
 Lab File: VX005732.D  
 Acq: 01 Nov 2018 16:31

Tgt Ion	Resp	Lower	Upper
142	100		
127	0.0	36.0	54.0#
141	0.0	11.7	17.5#

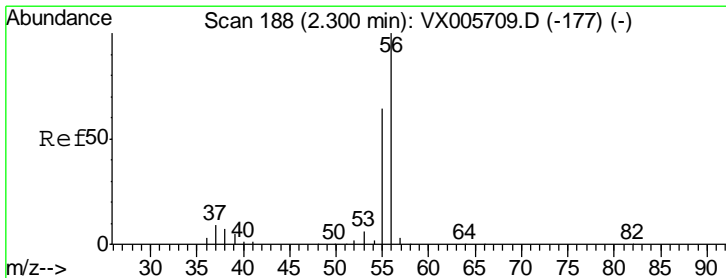
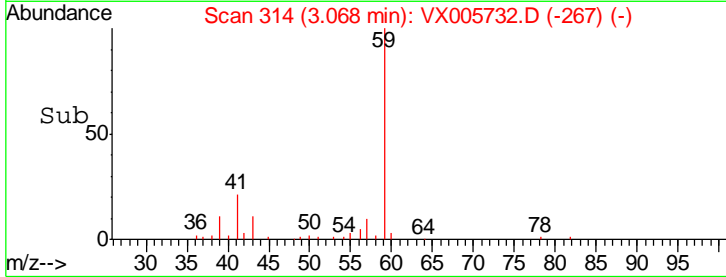
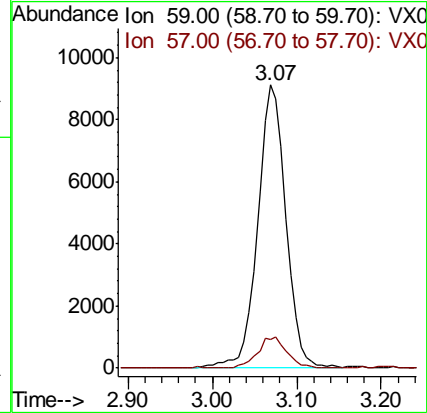
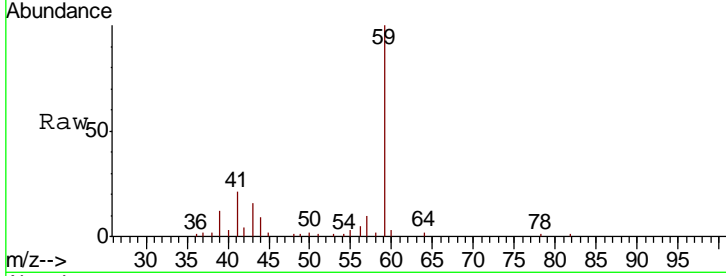




#11  
 Tert butyl alcohol  
 Concen: 45.444 ug/l  
 RT: 3.07 min Scan# 314  
 Delta R.T. -0.01 min  
 Lab File: VX005732.D  
 Acq: 01 Nov 2018 16:31

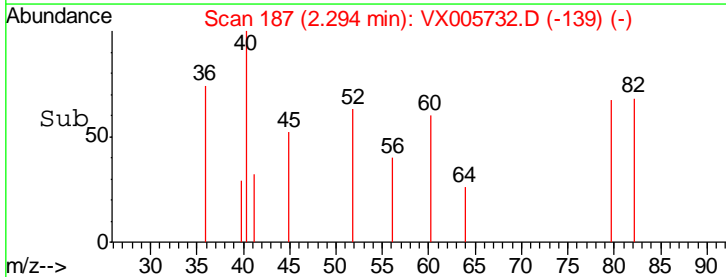
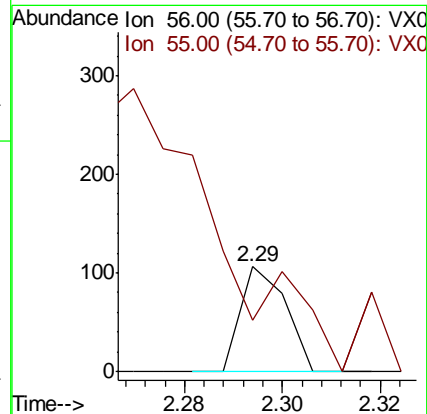
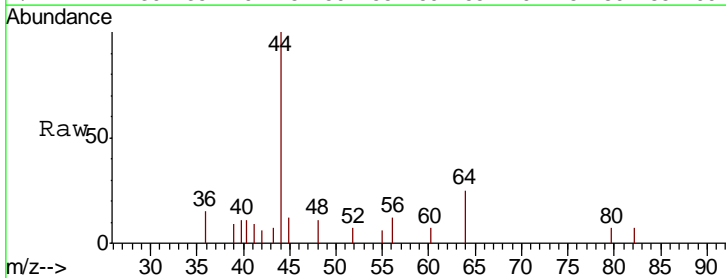
Instrument :  
 MSVOA\_X  
 ClientSampled :

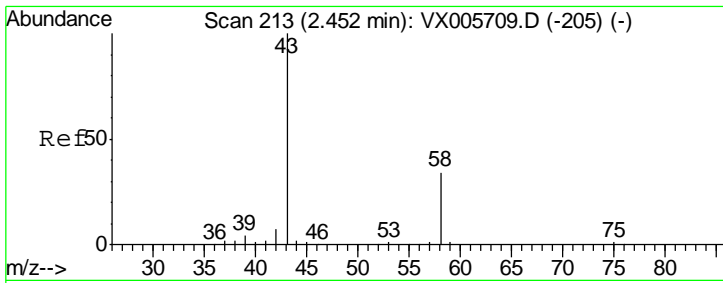
Tgt Ion	Resp	Lower	Upper
59	100		
57	11.3	8.5	12.7



#13  
 Acrolein  
 Concen: 12.380 ug/l  
 RT: 2.29 min Scan# 187  
 Delta R.T. -0.01 min  
 Lab File: VX005732.D  
 Acq: 01 Nov 2018 16:31

Tgt Ion	Resp	Lower	Upper
56	100		
55	0.0	57.3	85.9#

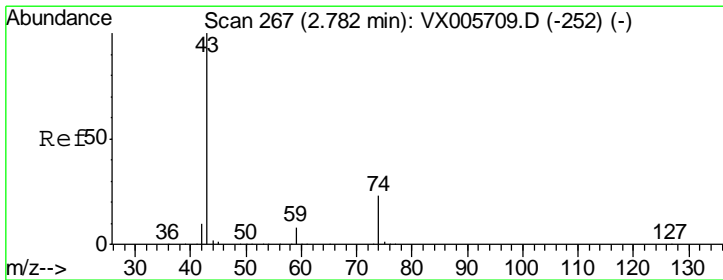
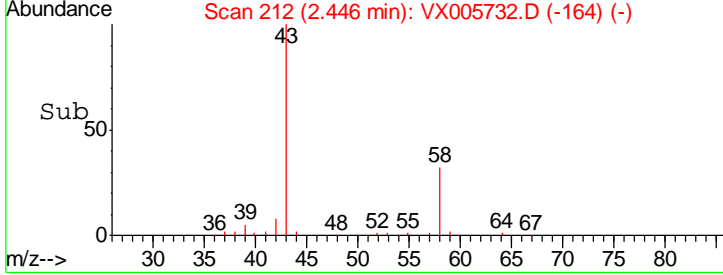
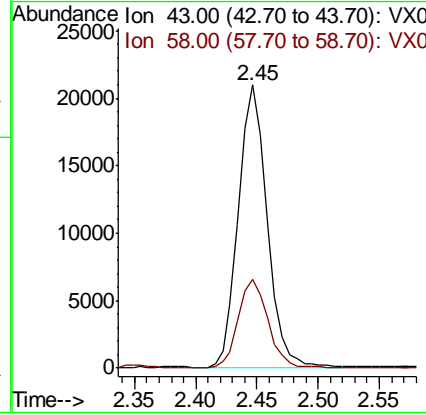
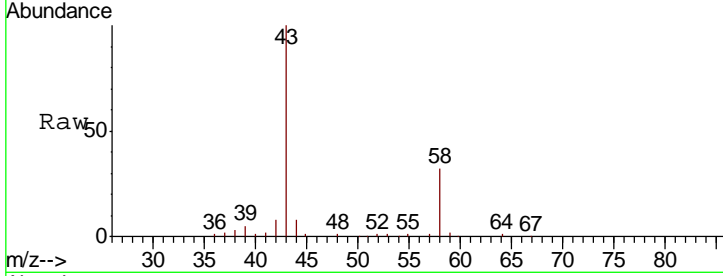




#16  
 Acetone  
 Concen: 31.014 ug/l  
 RT: 2.45 min Scan# 212  
 Delta R.T. -0.01 min  
 Lab File: VX005732.D  
 Acq: 01 Nov 2018 16:31

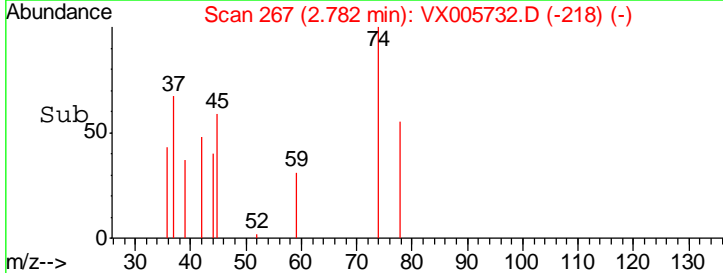
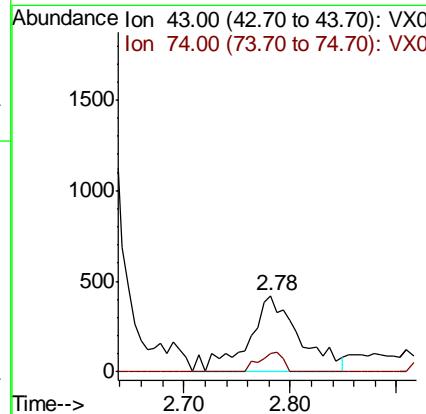
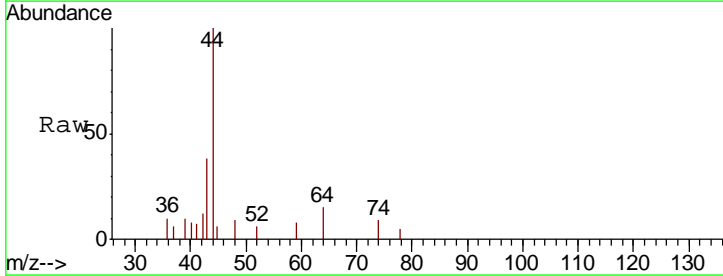
Instrument :  
 MSVOA\_X  
 ClientSampled :

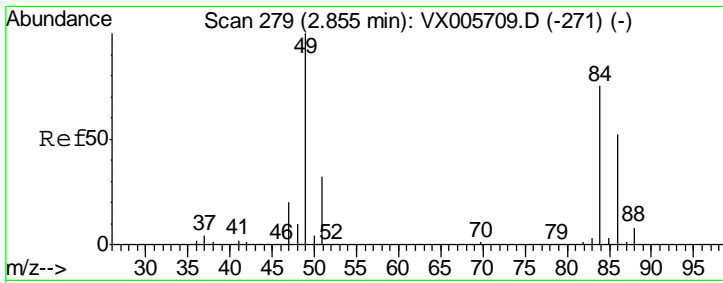
Tgt Ion	Resp	Lower	Upper
43	100		
58	31.7	23.8	35.6



#18  
 Methyl Acetate  
 Concen: 0.583 ug/l  
 RT: 2.78 min Scan# 267  
 Delta R.T. -0.00 min  
 Lab File: VX005732.D  
 Acq: 01 Nov 2018 16:31

Tgt Ion	Resp	Lower	Upper
43	100		
74	12.2	16.8	25.2#

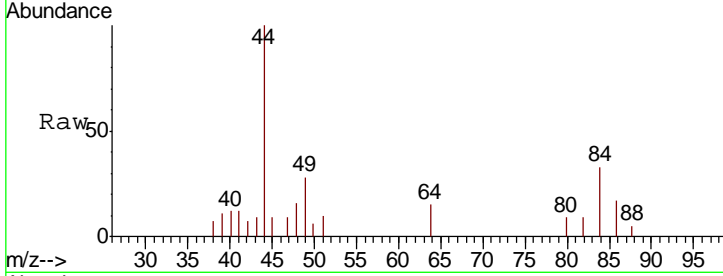




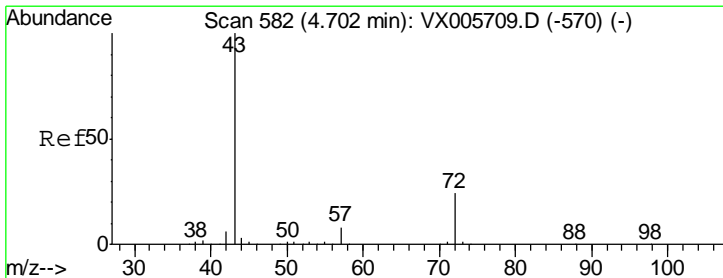
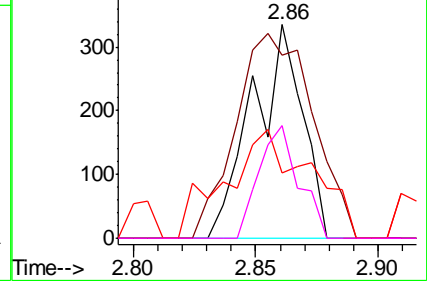
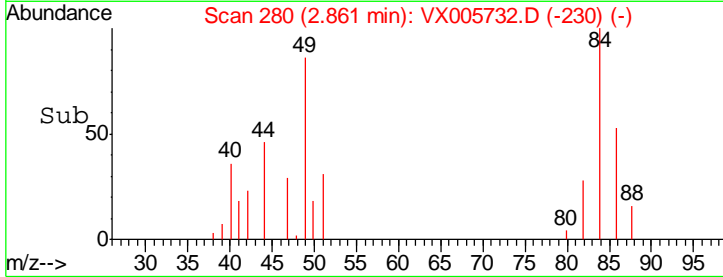
#20  
 Methylene Chloride  
 Concen: 0.328 ug/l  
 RT: 2.86 min Scan# 280  
 Delta R.T. 0.01 min  
 Lab File: VX005732.D  
 Acq: 01 Nov 2018 16:31

Instrument : MSVOA\_X  
 ClientSampled :

Tgt Ion	Resp	Lower	Upper
84	100		
49	86.0	109.5	164.3#
51	7.8	33.3	49.9#
86	52.8	52.7	79.1

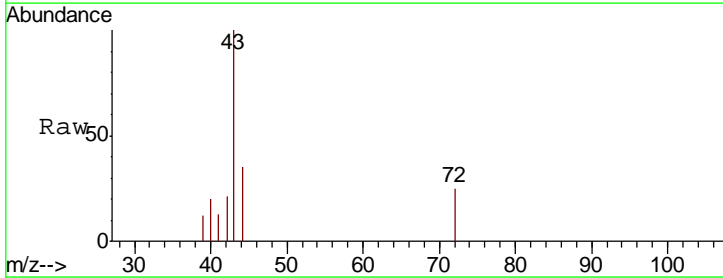


Abundance Ion 83.90 (83.60 to 84.60): VX0  
 Ion 48.90 (48.60 to 49.60): VX0  
 Ion 50.90 (50.60 to 51.60): VX0  
 Ion 85.90 (85.60 to 86.60): VX0

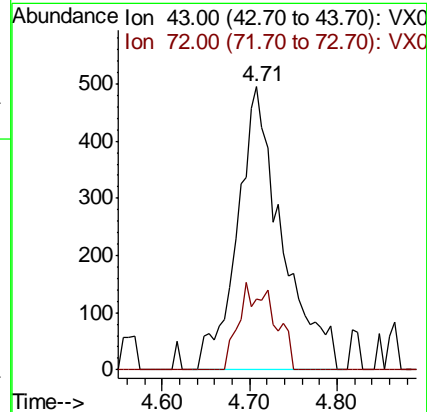
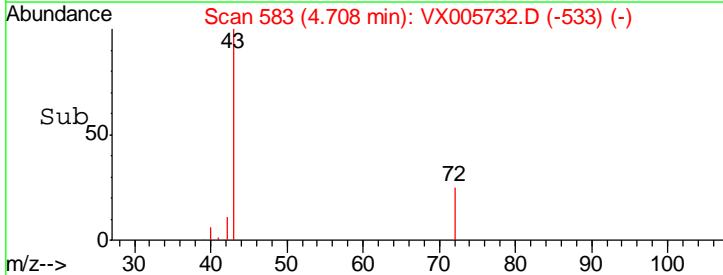


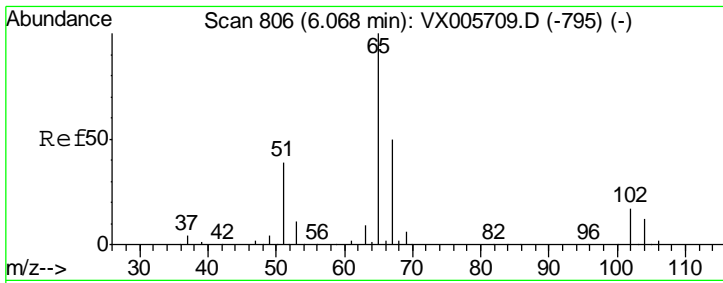
#25  
 2-Butanone  
 Concen: 1.238 ug/l  
 RT: 4.71 min Scan# 583  
 Delta R.T. 0.01 min  
 Lab File: VX005732.D  
 Acq: 01 Nov 2018 16:31

Tgt Ion	Resp	Lower	Upper
43	100		
72	24.8	19.2	28.8



Abundance Ion 43.00 (42.70 to 43.70): VX0  
 Ion 72.00 (71.70 to 72.70): VX0

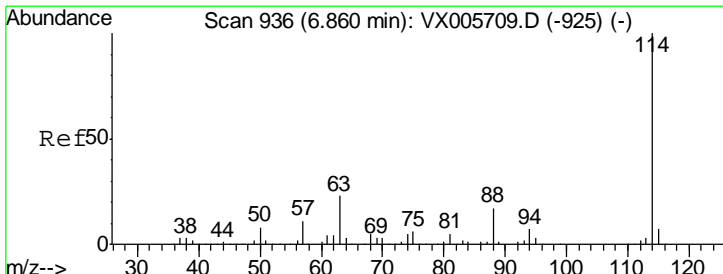
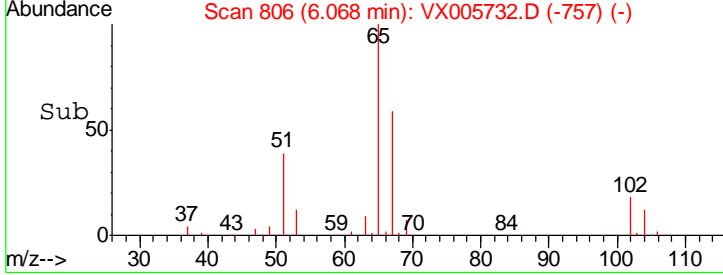
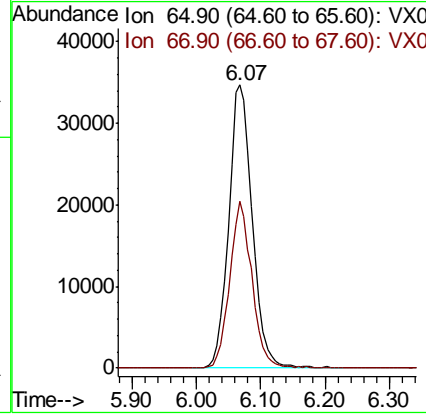
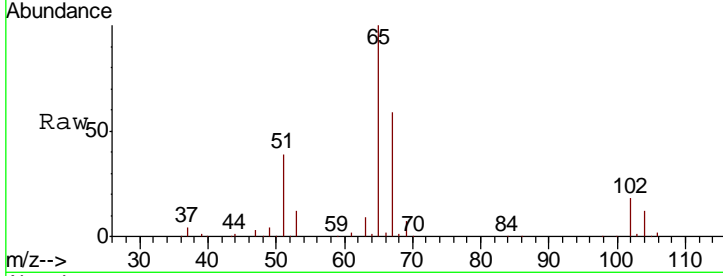




#33  
 1,2-Dichloroethane-d4  
 Concen: 53.044 ug/l  
 RT: 6.07 min Scan# 806  
 Delta R.T. -0.00 min  
 Lab File: VX005732.D  
 Acq: 01 Nov 2018 16:31

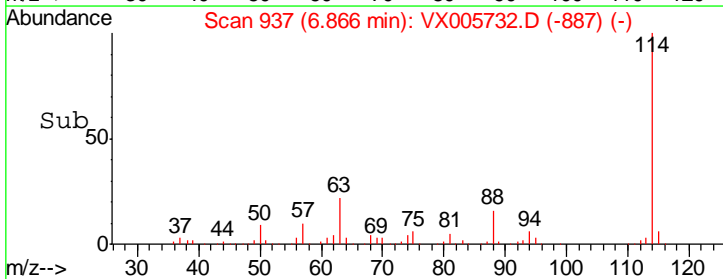
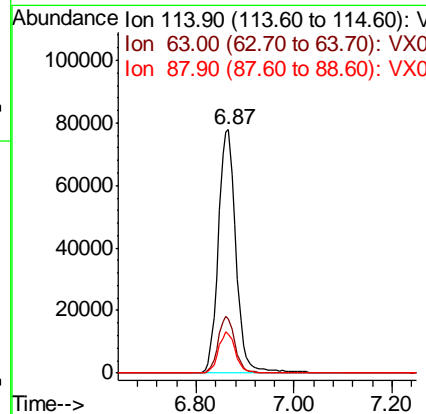
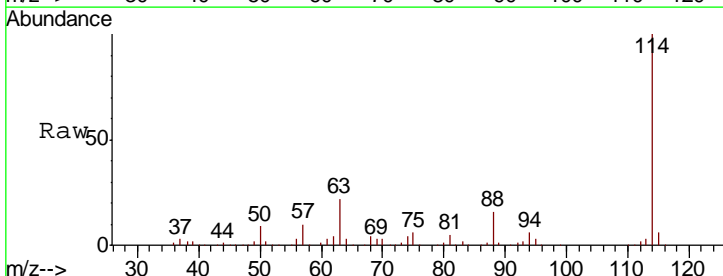
Instrument :  
 MSVOA\_X  
 ClientSampled :

Tgt Ion	Resp	Lower	Upper
65	100		
67	55.7	0.0	105.0

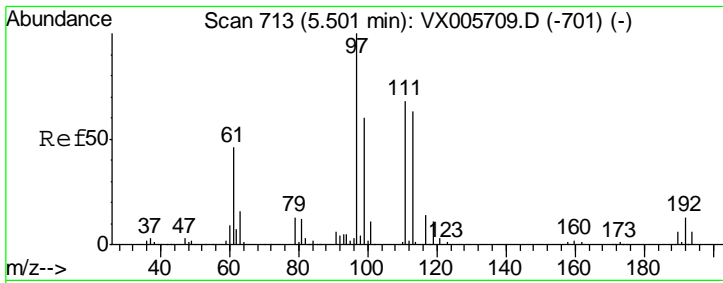


#34  
 1,4-Difluorobenzene  
 Concen: 50.000 ug/l  
 RT: 6.87 min Scan# 937  
 Delta R.T. 0.01 min  
 Lab File: VX005732.D  
 Acq: 01 Nov 2018 16:31

Tgt Ion	Resp	Lower	Upper
114	100		
63	22.4	0.0	42.8
88	15.7	0.0	31.2



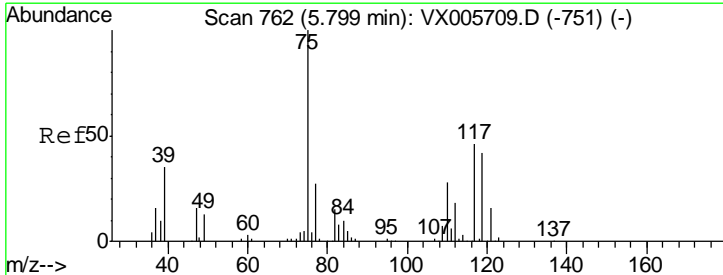
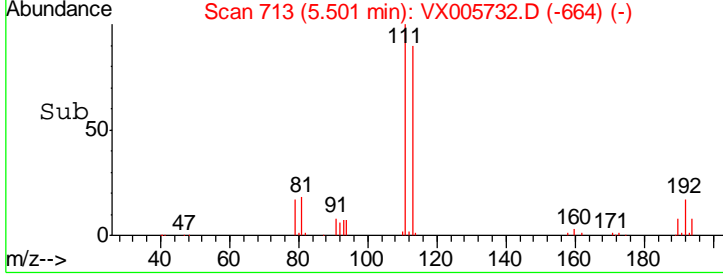
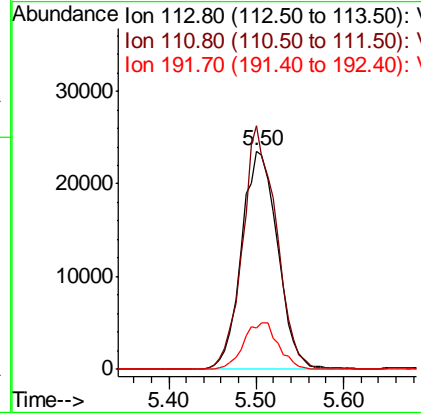
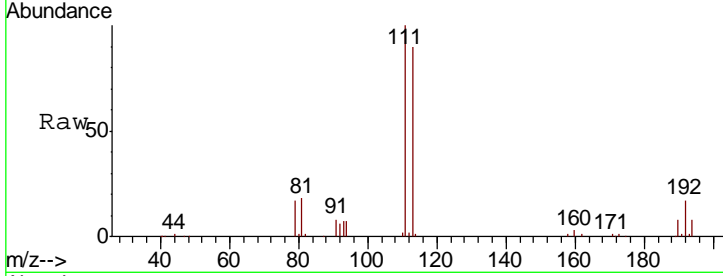




#35  
 Dibromofluoromethane  
 Concen: 50.144 ug/l  
 RT: 5.50 min Scan# 713  
 Delta R.T. -0.00 min  
 Lab File: VX005732.D  
 Acq: 01 Nov 2018 16:31

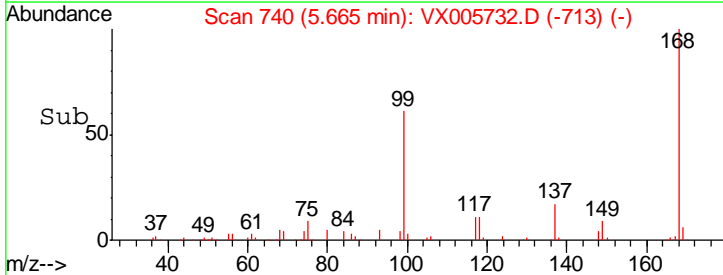
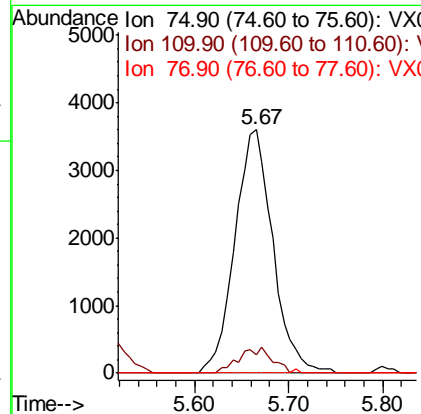
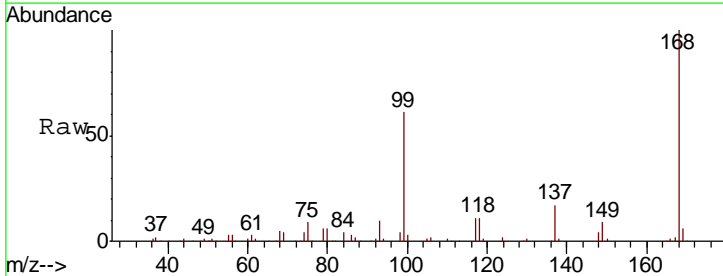
Instrument :  
 MSVOA\_X  
 ClientSampled :

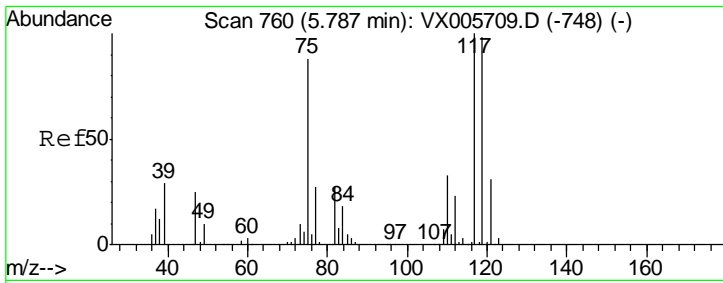
Tgt Ion	Resp	Lower	Upper
113	67609		
111	104.4	82.3	123.5
192	20.7	17.9	26.9



#36  
 1,1-Dichloropropene  
 Concen: 4.888 ug/l  
 RT: 5.67 min Scan# 740  
 Delta R.T. -0.13 min  
 Lab File: VX005732.D  
 Acq: 01 Nov 2018 16:31

Tgt Ion	Resp	Lower	Upper
75	10142		
110	9.3	17.4	52.2#
77	0.0	25.8	38.6#

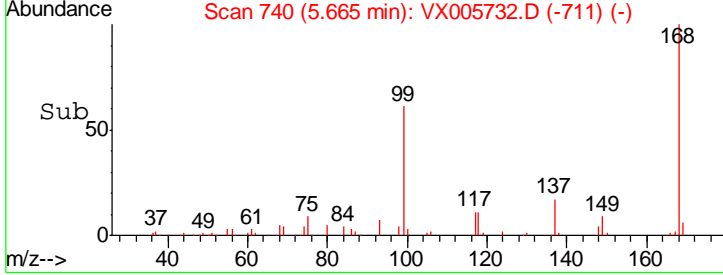
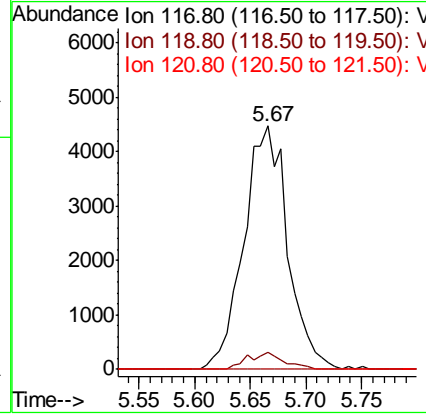
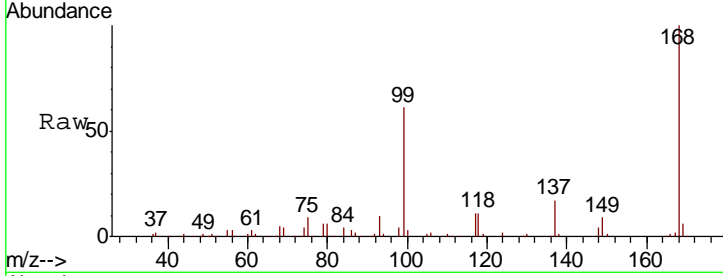




#38  
 Carbon Tetrachloride  
 Concen: 6.550 ug/l  
 RT: 5.67 min Scan# 740  
 Delta R.T. -0.12 min  
 Lab File: VX005732.D  
 Acq: 01 Nov 2018 16:31

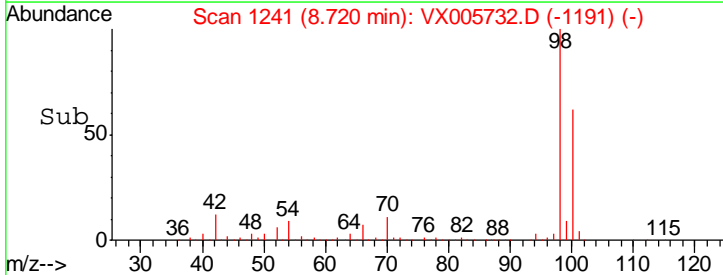
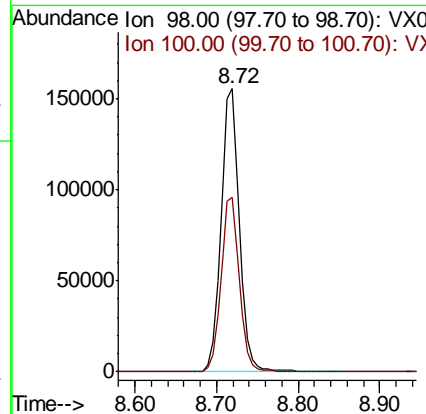
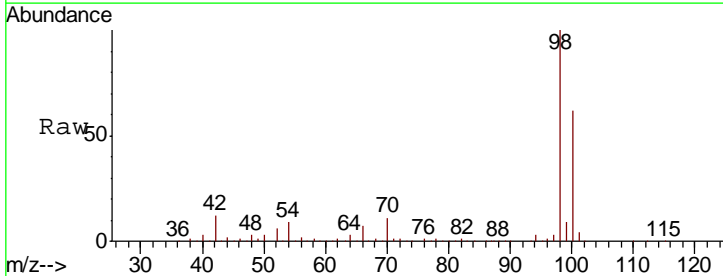
Instrument :  
 MSVOA\_X  
 ClientSampled :

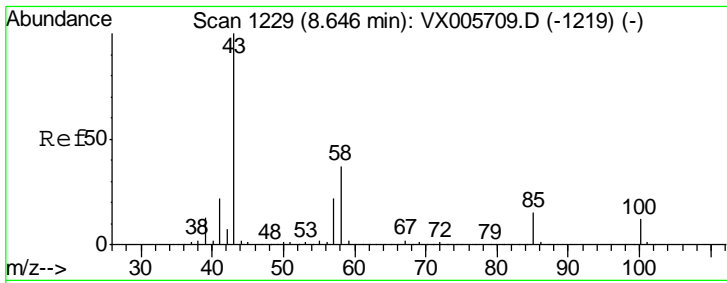
Tgt Ion	Resp	Lower	Upper
117	12277		
119	7.1	78.1	117.1#
121	0.0	24.6	36.8#



#50  
 Toluene-d8  
 Concen: 52.090 ug/l  
 RT: 8.72 min Scan# 1241  
 Delta R.T. 0.01 min  
 Lab File: VX005732.D  
 Acq: 01 Nov 2018 16:31

Tgt Ion	Resp	Lower	Upper
98	246329		
100	61.4	51.3	76.9

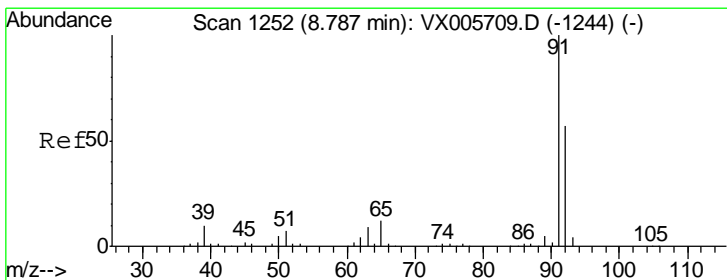
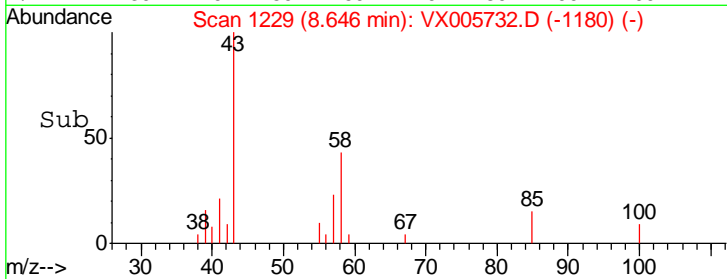
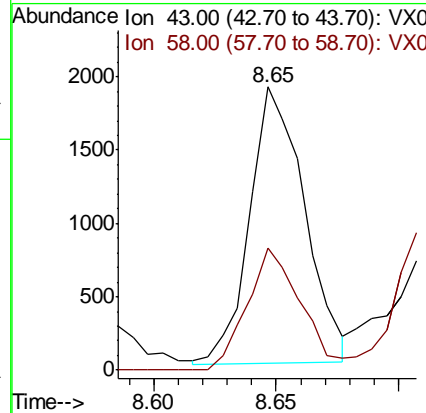
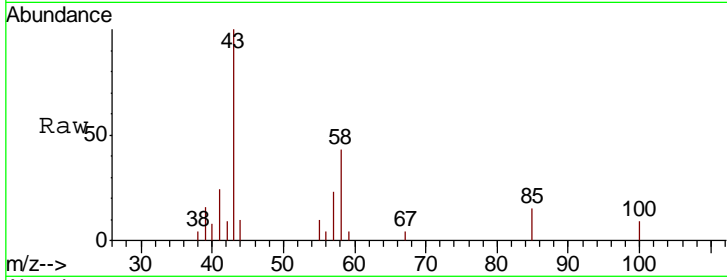




#51  
 4-Methyl-2-Pentanone  
 Concen: 1.119 ug/l  
 RT: 8.65 min Scan# 1229  
 Delta R.T. -0.00 min  
 Lab File: VX005732.D  
 Acq: 01 Nov 2018 16:31

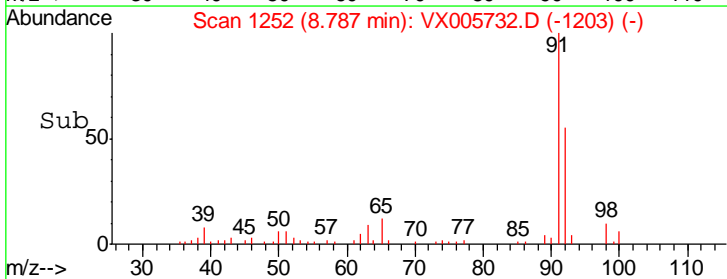
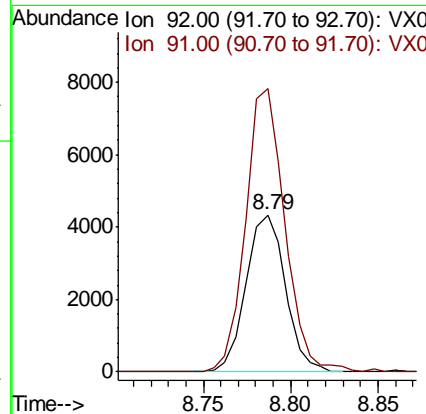
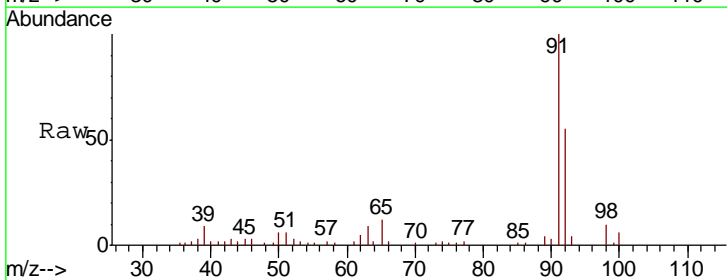
Instrument :  
 MSVOA\_X  
 ClientSampled :

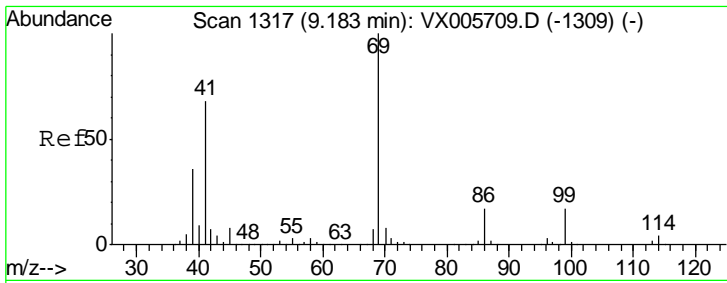
Tgt Ion	Resp	Lower	Upper
43	100		
58	43.3	29.7	44.5



#52  
 Toluene  
 Concen: 2.032 ug/l  
 RT: 8.79 min Scan# 1252  
 Delta R.T. -0.00 min  
 Lab File: VX005732.D  
 Acq: 01 Nov 2018 16:31

Tgt Ion	Resp	Lower	Upper
92	100		
91	179.6	140.4	210.6

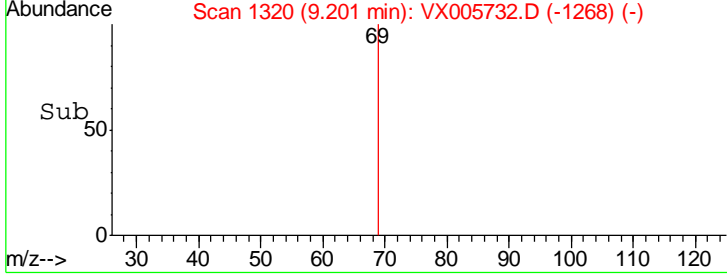
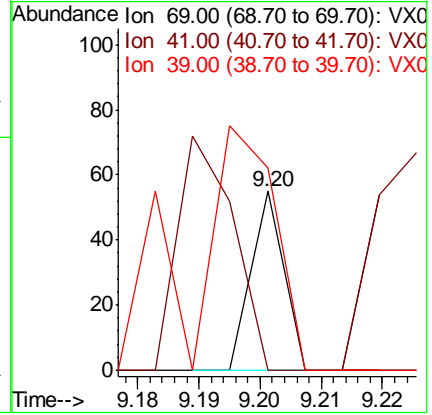
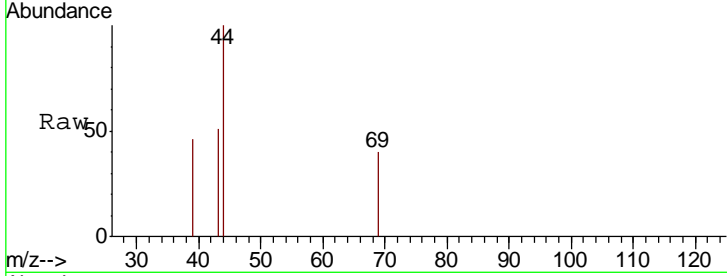




#56  
 Ethyl methacrylate  
 Concen: 2.479 ug/l  
 RT: 9.20 min Scan# 1320  
 Delta R.T. 0.02 min  
 Lab File: VX005732.D  
 Acq: 01 Nov 2018 16:31

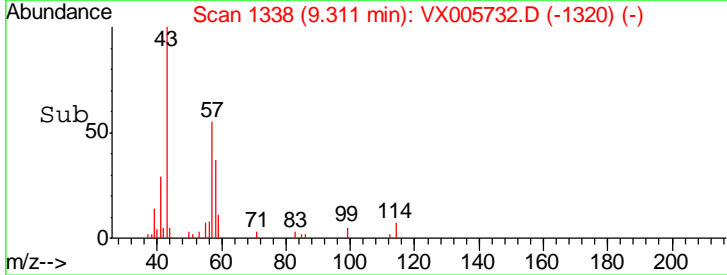
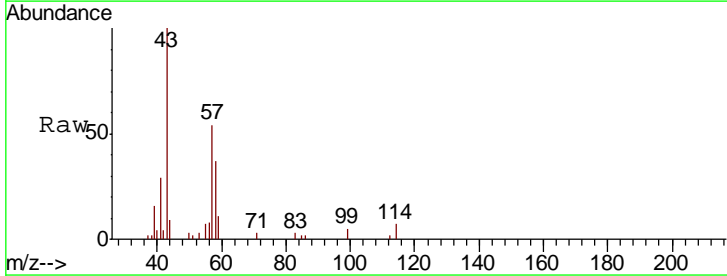
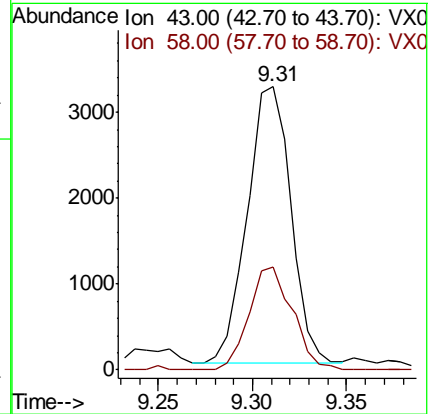
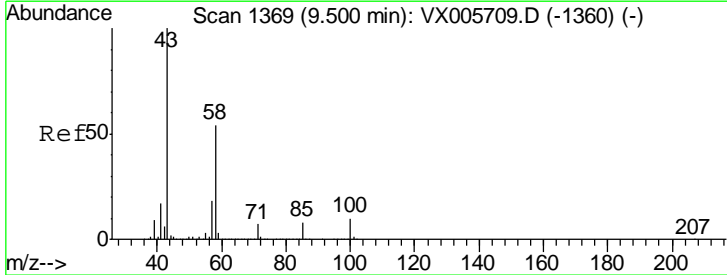
Instrument :  
 MSVOA\_X  
 ClientSampled :

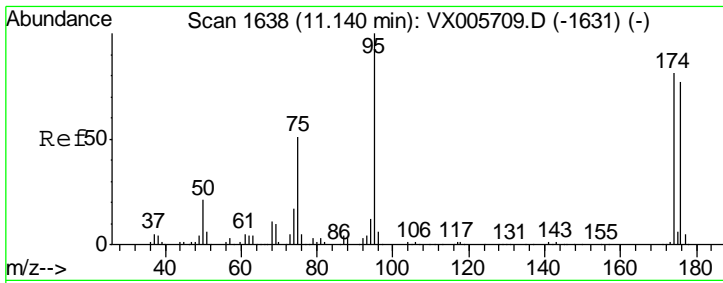
Tgt Ion	Resp	Lower	Upper
69	100		
41	225.0	57.0	85.6#
39	350.0	28.3	42.5#



#59  
 2-Hexanone  
 Concen: 2.439 ug/l  
 RT: 9.31 min Scan# 1338  
 Delta R.T. -0.19 min  
 Lab File: VX005732.D  
 Acq: 01 Nov 2018 16:31

Tgt Ion	Resp	Lower	Upper
43	100		
58	36.8	25.9	77.8

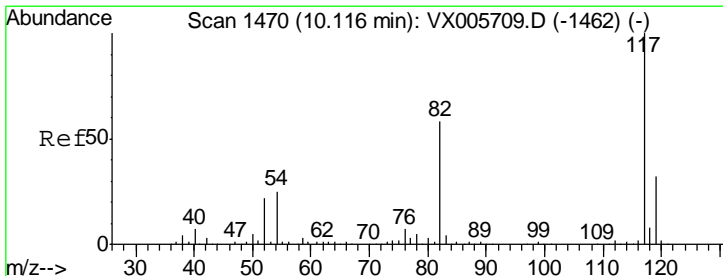
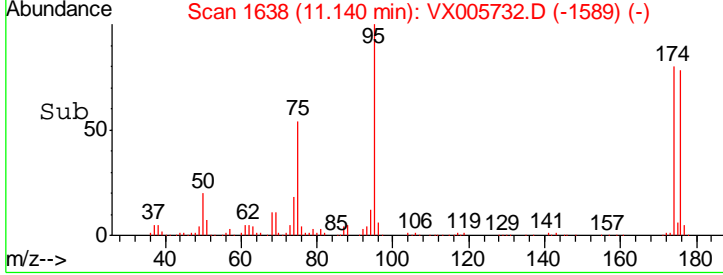
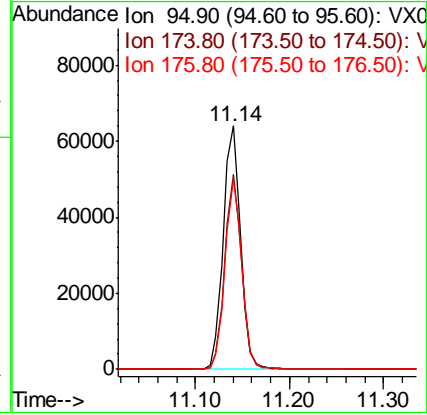
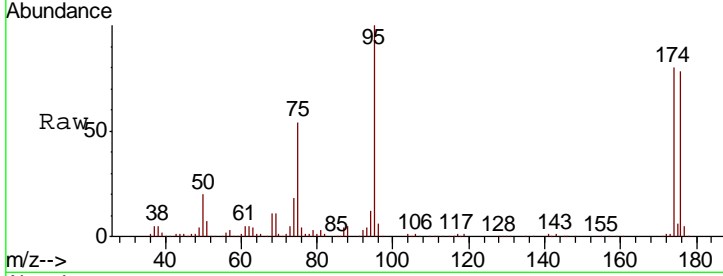




#62  
 4-Bromofluorobenzene  
 Concen: 47.077 ug/l  
 RT: 11.14 min Scan# 1638  
 Delta R.T. -0.00 min  
 Lab File: VX005732.D  
 Acq: 01 Nov 2018 16:31

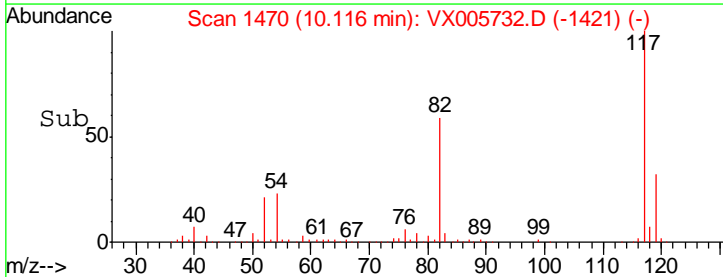
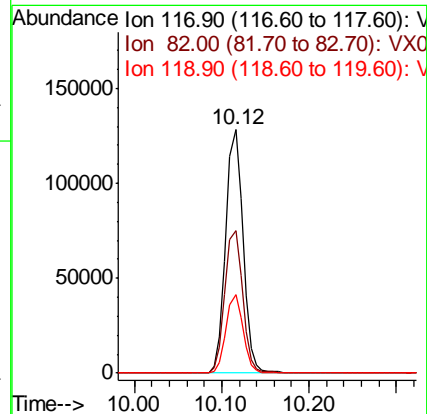
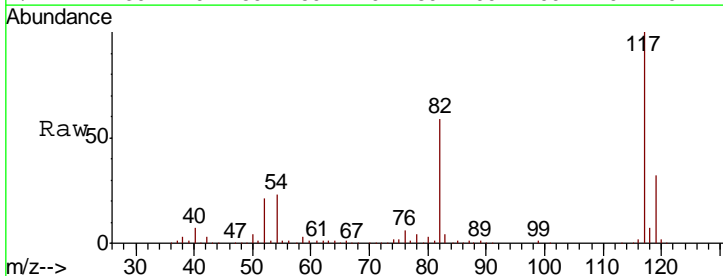
Instrument :  
 MSVOA\_X  
 ClientSampled :

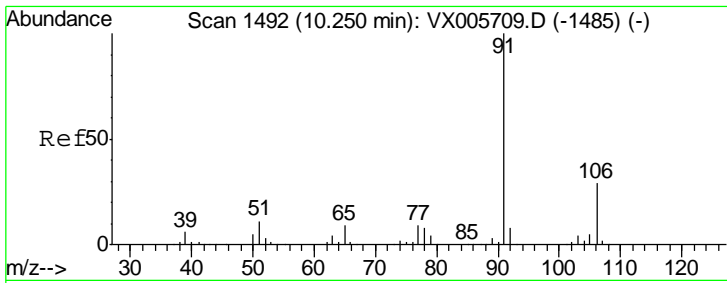
Tgt Ion	Resp	Lower	Upper
95	82164		
174	77.8	0.0	184.4
176	75.6	0.0	177.4



#63  
 Chlorobenzene-d5  
 Concen: 50.000 ug/l  
 RT: 10.12 min Scan# 1470  
 Delta R.T. -0.00 min  
 Lab File: VX005732.D  
 Acq: 01 Nov 2018 16:31

Tgt Ion	Resp	Lower	Upper
117	176369		
82	58.5	44.1	66.1
119	32.1	26.2	39.2

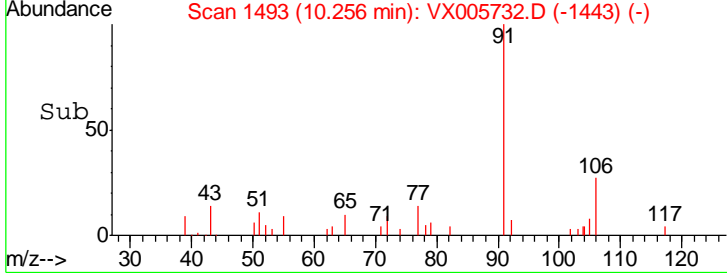
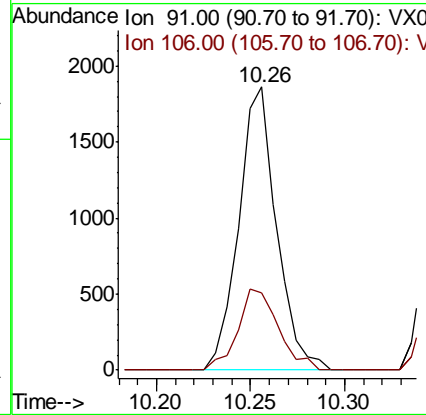
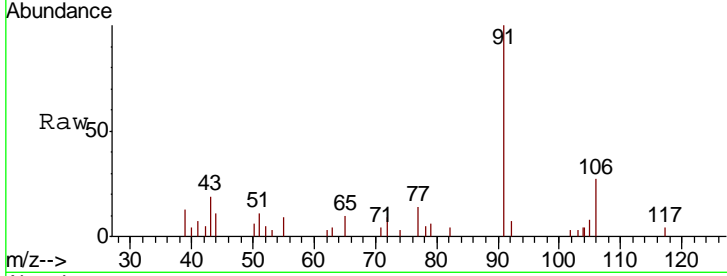




#67  
Ethyl Benzene  
Concen: 0.404 ug/l  
RT: 10.26 min Scan# 1493  
Delta R.T. 0.01 min  
Lab File: VX005732.D  
Acq: 01 Nov 2018 16:31

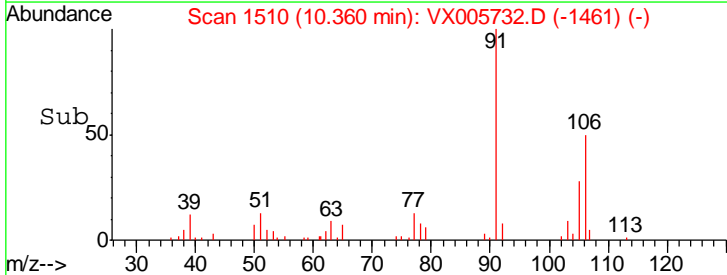
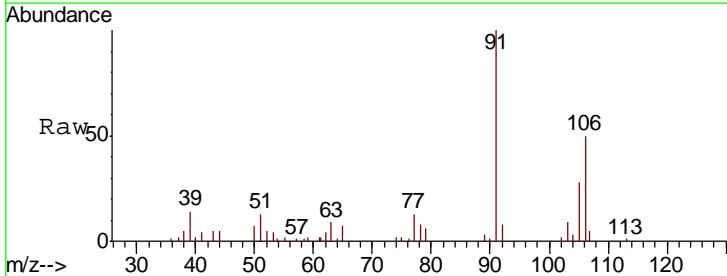
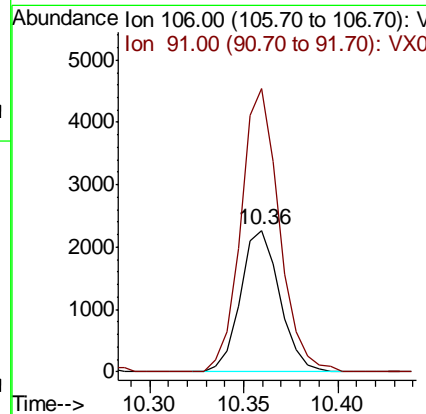
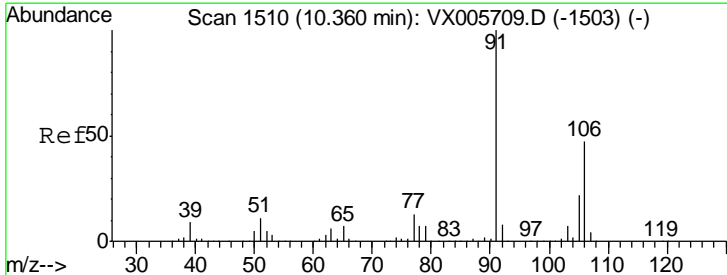
Instrument :  
MSVOA\_X  
ClientSampled :

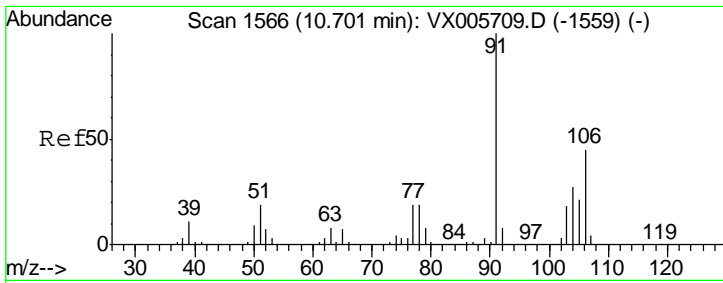
Tgt Ion: 91 Resp: 2585  
Ion Ratio Lower Upper  
91 100  
106 27.5 24.4 36.6



#68  
m/p-Xylenes  
Concen: 1.375 ug/l  
RT: 10.36 min Scan# 1510  
Delta R.T. -0.00 min  
Lab File: VX005732.D  
Acq: 01 Nov 2018 16:31

Tgt Ion: 106 Resp: 3267  
Ion Ratio Lower Upper  
106 100  
91 195.9 164.2 246.4

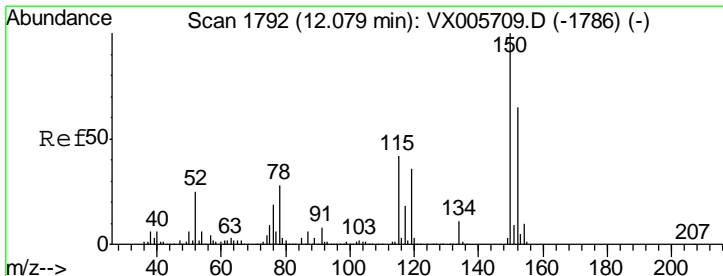
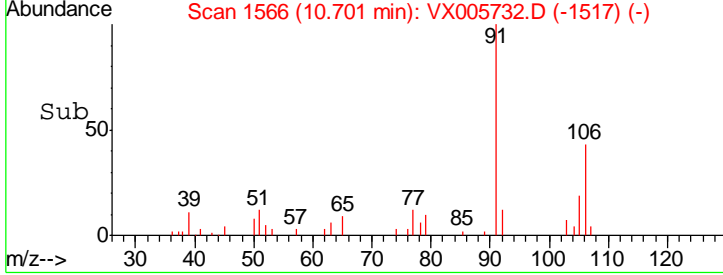
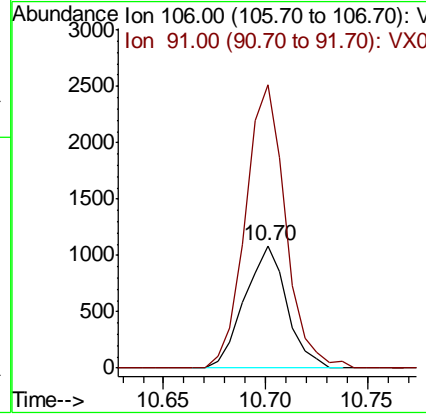
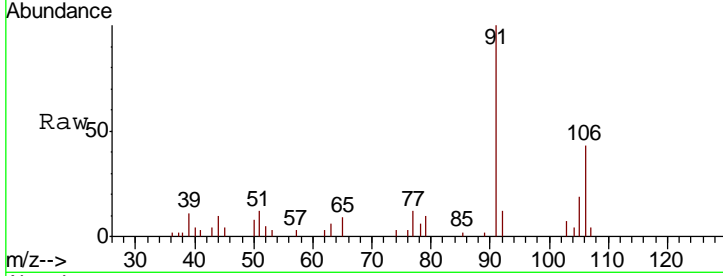




#69  
 o-Xylene  
 Concen: 0.685 ug/l  
 RT: 10.70 min Scan# 1566  
 Delta R.T. -0.00 min  
 Lab File: VX005732.D  
 Acq: 01 Nov 2018 16:31

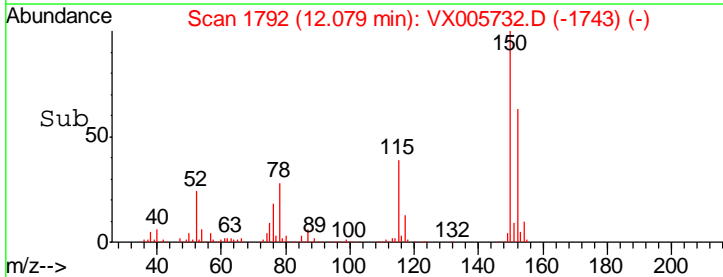
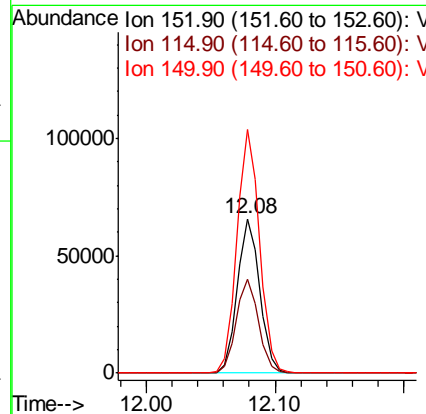
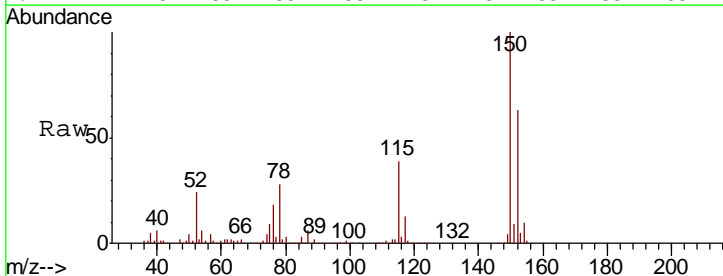
Instrument : MSVOA\_X  
 ClientSampled :

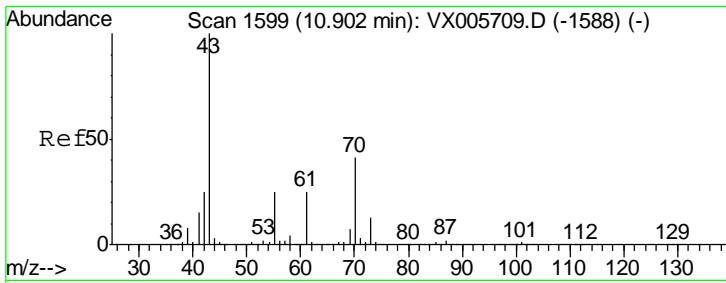
Tgt Ion	Resp	Lower	Upper
106	1557		
91	220.4	108.5	325.5



#72  
 1,4-Dichlorobenzene-d4  
 Concen: 50.000 ug/l  
 RT: 12.08 min Scan# 1792  
 Delta R.T. -0.00 min  
 Lab File: VX005732.D  
 Acq: 01 Nov 2018 16:31

Tgt Ion	Resp	Lower	Upper
152	80406		
115	60.5	39.4	118.1
150	158.8	0.0	346.4

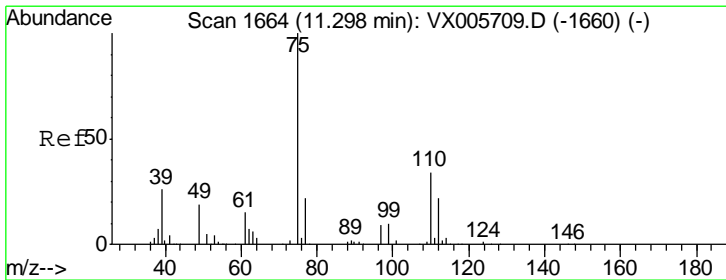
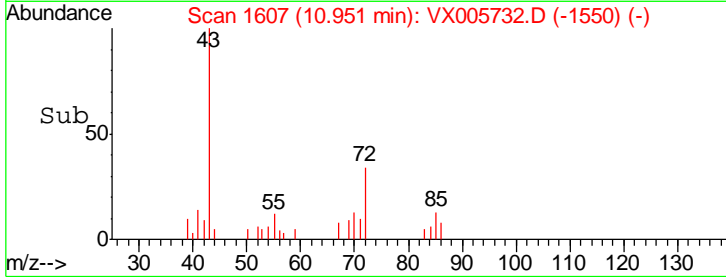
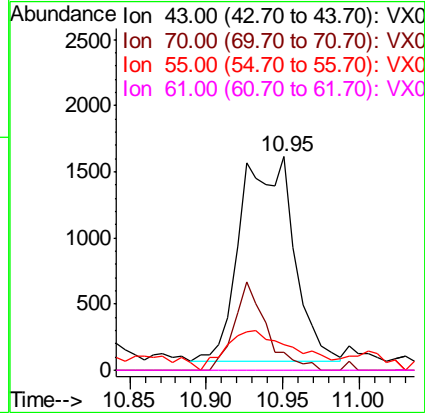
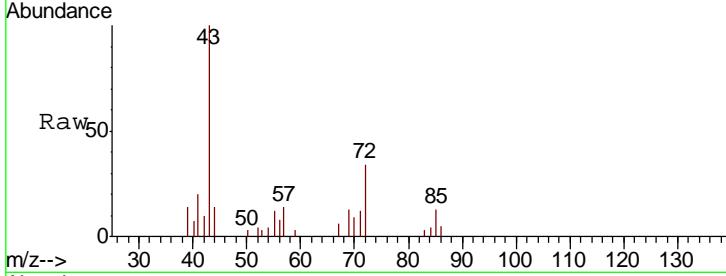




#74  
 N-amyl acetate  
 Concen: 1.339 ug/l  
 RT: 10.95 min Scan# 1607  
 Delta R.T. 0.05 min  
 Lab File: VX005732.D  
 Acq: 01 Nov 2018 16:31

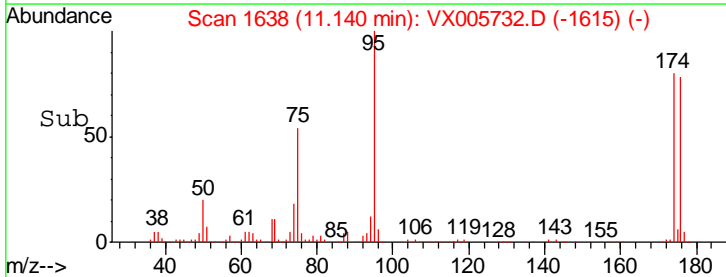
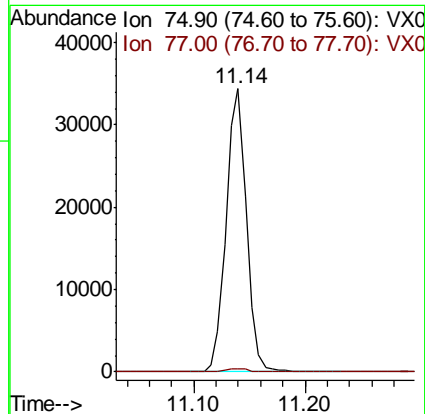
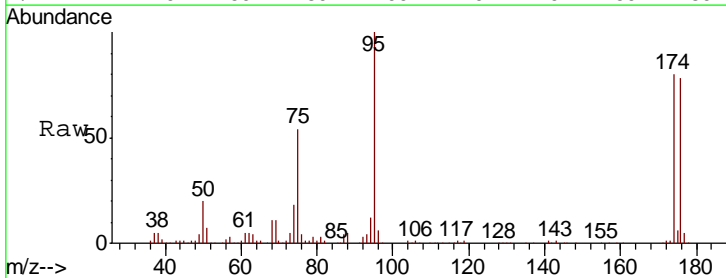
Instrument : MSVOA\_X  
 ClientSampled :

Tgt Ion	Resp	Lower	Upper
43	3782		
70	0.0	31.6	47.4#
55	0.0	19.7	29.5#
61	0.0	18.3	27.5#

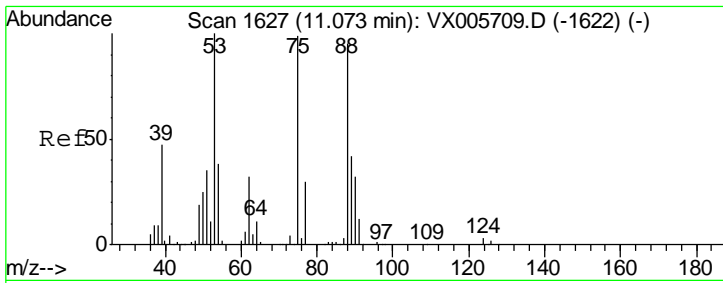


#76  
 1,2,3-Trichloropropane  
 Concen: 21.669 ug/l  
 RT: 11.14 min Scan# 1638  
 Delta R.T. -0.16 min  
 Lab File: VX005732.D  
 Acq: 01 Nov 2018 16:31

Tgt Ion	Resp	Lower	Upper
75	43394		
77	1.4	20.5	61.6#



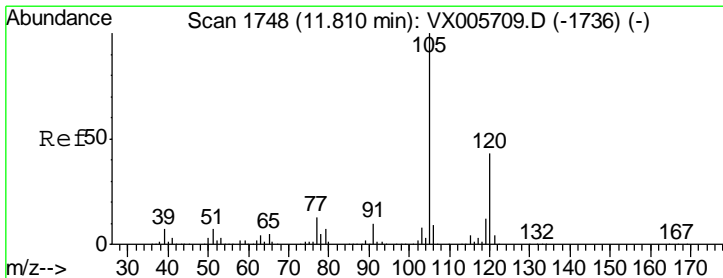
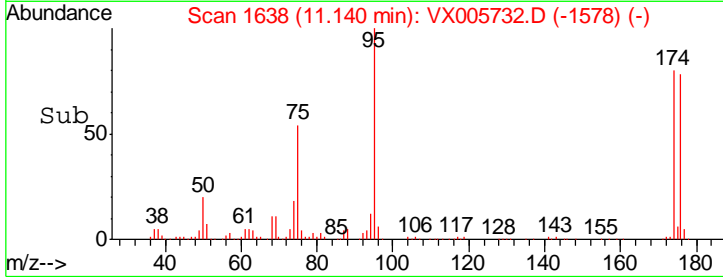
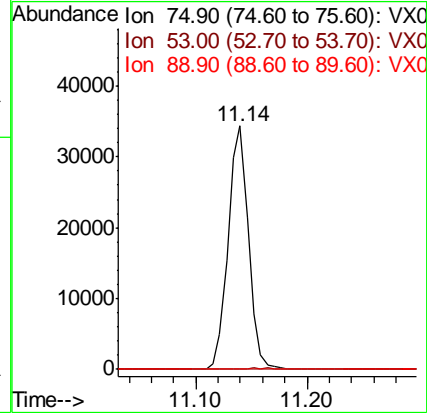
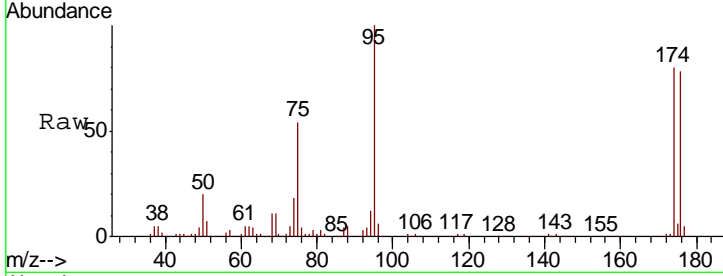




#81  
 trans-1,4-Dichloro-2-butene  
 Concen: 70.010 ug/l  
 RT: 11.14 min Scan# 1638  
 Delta R.T. 0.07 min  
 Lab File: VX005732.D  
 Acq: 01 Nov 2018 16:31

Instrument : MSVOA\_X  
 ClientSampled :

Tgt Ion	Resp	Lower	Upper
75	100		
53	0.5	80.2	120.2#
89	0.0	39.8	59.8#



#84  
 1,2,4-Trimethylbenzene  
 Concen: 0.479 ug/l  
 RT: 11.81 min Scan# 1748  
 Delta R.T. -0.00 min  
 Lab File: VX005732.D  
 Acq: 01 Nov 2018 16:31

Tgt Ion	Resp	Lower	Upper
105	100		
120	44.1	22.4	67.0

