

Data Path : Z:\voasrv\HPCHEM1\MSVOA_X\Data\VX110121\
 Data File : VX025037.D
 Acq On : 01 Nov 2021 17:01
 Operator : JC/MD
 Sample : MDL07
 Misc : 5.0mL/MSVOA_X/WATER
 ALS Vial : 6 Sample Multiplier: 1

Instrument :
 MSVOA_X
 ClientSampleId :

Quant Time: Nov 02 03:50:44 2021
 Quant Method : Z:\voasrv\HPCHEM1\MSVOA_X\Method\SFAMXLM102821WMA.M
 Quant Title : VOC Analysis
 QLast Update : Tue Nov 02 03:29:47 2021
 Response via : Initial Calibration

Compound	R.T.	QIon	Response	Conc	Units	Dev(Min)
Internal Standards						
1) 1,4-Difluorobenzene	6.763	114	167970	50.000	ug/L	0.00
28) Chlorobenzene-d5	10.055	117	153803	50.000	ug/L	0.00
58) 1,4-Dichlorobenzene-d4	12.024	152	71182	50.000	ug/L	0.00
System Monitoring Compounds						
4) Vinyl Chloride-d3	1.368	65	40312	37.650	ug/L	0.00
Spiked Amount	50.000	Range 60 - 135	Recovery	=	75.300%	
7) Chloroethane-d5	1.666	69	30045	41.052	ug/L	0.00
Spiked Amount	50.000	Range 70 - 130	Recovery	=	82.100%	
11) 1,1-Dichloroethene-d2	2.306	63	86424	32.756	ug/L	0.00
Spiked Amount	50.000	Range 60 - 125	Recovery	=	65.520%	
21) 2-Butanone-d5	4.465	46	96724	90.440	ug/L	0.00
Spiked Amount	100.000	Range 40 - 130	Recovery	=	90.440%	
24) Chloroform-d	5.062	84	130791	46.684	ug/L	0.00
Spiked Amount	50.000	Range 70 - 125	Recovery	=	93.360%	
26) 1,2-Dichloroethane-d4	5.958	65	94368	45.932	ug/L	0.00
Spiked Amount	50.000	Range 70 - 125	Recovery	=	91.860%	
32) Benzene-d6	5.977	84	213500	48.906	ug/L	0.00
Spiked Amount	50.000	Range 70 - 125	Recovery	=	97.820%	
36) 1,2-Dichloropropane-d6	7.312	67	71824	48.278	ug/L	0.00
Spiked Amount	50.000	Range 70 - 120	Recovery	=	96.560%	
41) Toluene-d8	8.653	98	206515	49.447	ug/L	0.00
Spiked Amount	50.000	Range 80 - 120	Recovery	=	98.900%	
43) trans-1,3-Dichloroprop...	8.952	79	41591	48.647	ug/L	0.00
Spiked Amount	50.000	Range 60 - 125	Recovery	=	97.300%	
47) 2-Hexanone-d5	9.384	63	72201	95.320	ug/L	0.00
Spiked Amount	100.000	Range 45 - 130	Recovery	=	95.320%	
56) 1,1,2,2-Tetrachloroeth...	11.195	84	99223	49.322	ug/L	0.00
Spiked Amount	50.000	Range 65 - 120	Recovery	=	98.640%	
66) 1,2-Dichlorobenzene-d4	12.323	152	72073	52.179	ug/L	0.00
Spiked Amount	50.000	Range 80 - 120	Recovery	=	104.360%	
Target Compounds						
2) Dichlorodifluoromethane	1.166	85	2798	1.775	ug/L #	85
3) Chloromethane	1.288	50	1611	1.469	ug/L	98
5) Vinyl chloride	1.374	62	1905	1.544	ug/L #	73
6) Bromomethane	1.611	94	1425	1.796	ug/L	74
8) Chloroethane	1.691	64	1019	1.635	ug/L #	79
9) Trichlorofluoromethane	1.886	101	4547	1.661	ug/L	97
10) 1,1,2-Trichloro-1,2,-...	2.325	101	3042	2.449	ug/L #	63
12) 1,1-Dichloroethene	2.319	96	2988	2.860	ug/L #	1
13) Acetone	2.392	43	3707	3.647	ug/L	89
14) Carbon disulfide	2.508	76	4726	1.669	ug/L #	73
15) Methyl Acetate	2.703	43	2562	1.743	ug/L #	66
16) Methylene chloride	2.788	84	2586	2.186	ug/L #	73
17) trans-1,2-Dichloroethene	3.099	96	1935	1.809	ug/L	83
18) Methyl tert-butyl Ether	3.117	73	7846	1.776	ug/L #	90
19) 1,1-Dichloroethane	3.617	63	4180	1.681	ug/L #	69
20) cis-1,2-Dichloroethene	4.489	96	464	0.384	ug/L	86
22) 2-Butanone	4.580	43	3877	3.098	ug/L #	54
23) Bromochloromethane	4.897	128	714	1.182	ug/L #	81
25) Chloroform	5.086	83	2749	0.994	ug/L	94

Data Path : Z:\voasrv\HPCHEM1\MSVOA_X\Data\VX110121\
 Data File : VX025037.D
 Acq On : 01 Nov 2021 17:01
 Operator : JC/MD
 Sample : MDL07
 Misc : 5.0mL/MSVOA_X/WATER
 ALS Vial : 6 Sample Multiplier: 1

Instrument :
 MSVOA_X
 ClientSampleId :

Quant Time: Nov 02 03:50:44 2021
 Quant Method : Z:\voasrv\HPCHEM1\MSVOA_X\Method\SFAMXLM102821WMA.M
 Quant Title : VOC Analysis
 QLast Update : Tue Nov 02 03:29:47 2021
 Response via : Initial Calibration

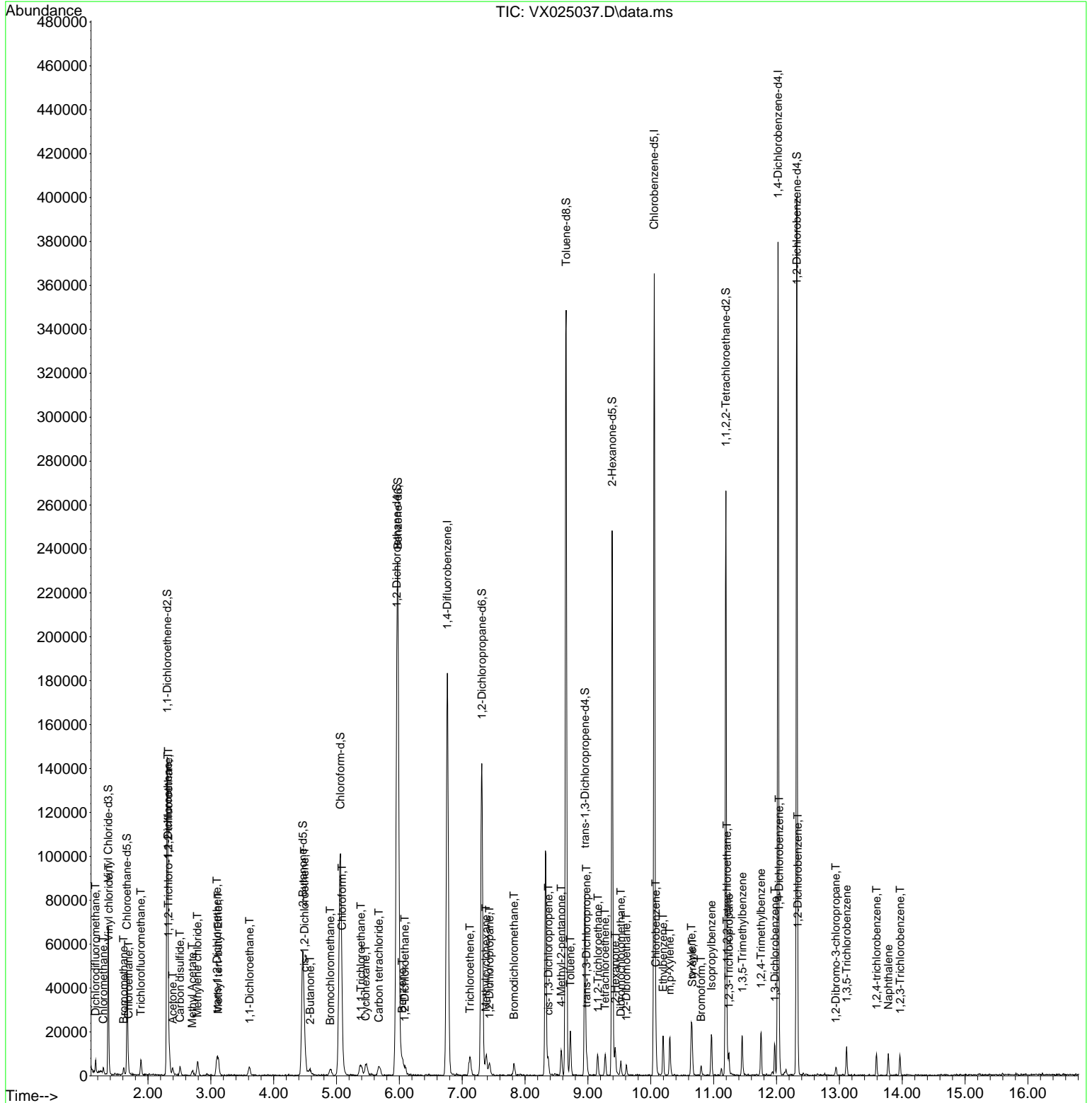
Compound	R.T.	QIon	Response	Conc	Units	Dev(Min)
27) 1,2-Dichloroethane	6.086	62	4176	1.707	ug/L	99
29) Cyclohexane	5.464	56	1581	0.758	ug/L #	64
30) 1,1,1-Trichloroethane	5.385	97	3784	1.422	ug/L #	28
31) Carbon tetrachloride	5.672	117	2674	1.187	ug/L #	57
33) Benzene	6.044	78	8798	1.848	ug/L	100
34) Trichloroethene	7.123	95	1731	1.205	ug/L	82
35) Methylcyclohexane	7.379	83	3877	1.870	ug/L #	85
37) 1,2-Dichloropropane	7.434	63	2480	1.831	ug/L #	93
38) Bromodichloromethane	7.824	83	3385	1.635	ug/L	99
39) cis-1,3-Dichloropropene	8.372	75	3868	1.757	ug/L	92
40) 4-Methyl-2-pentanone	8.574	43	6398	3.041	ug/L #	84
42) Toluene	8.720	91	12067	2.316	ug/L	96
44) trans-1,3-Dichloropropene	8.976	75	5853	2.582	ug/L	94
45) 1,1,2-Trichloroethane	9.159	97	2481	1.956	ug/L	84
46) Tetrachloroethene	9.275	164	1721	1.919	ug/L	85
48) 2-Hexanone	9.433	43	6013	3.458	ug/L #	85
49) Dibromochloromethane	9.525	129	2662	1.865	ug/L	99
50) 1,2-Dibromoethane	9.610	107	2396	1.712	ug/L #	96
51) Chlorobenzene	10.079	112	5914	1.898	ug/L	91
52) Ethylbenzene	10.195	91	9995	1.662	ug/L	95
53) m,p-Xylene	10.299	106	3530	1.707	ug/L	86
54) o-Xylene	10.646	106	3390	1.677	ug/L	88
55) Styrene	10.659	104	5901	1.726	ug/L	93
57) 1,1,2,2-Tetrachloroethane	11.213	83	4603	2.255	ug/L	88
59) Bromoform	10.799	173	1588	1.811	ug/L #	98
60) Isopropylbenzene	10.963	105	10124	1.866	ug/L	95
61) 1,2,3-Trichloropropane	11.244	75	3405	1.964	ug/L	96
62) 1,3,5-Trimethylbenzene	11.457	105	8174	1.740	ug/L	95
63) 1,2,4-Trimethylbenzene	11.756	105	8536	1.812	ug/L	99
64) 1,3-Dichlorobenzene	11.975	146	3949	1.870	ug/L #	86
65) 1,4-Dichlorobenzene	12.043	146	4698	2.151	ug/L	90
67) 1,2-Dichlorobenzene	12.341	146	4483	2.078	ug/L	91
68) 1,2-Dibromo-3-chloropr...	12.945	75	1086	1.921	ug/L #	76
69) 1,3,5-Trichlorobenzene	13.116	180	2731	1.801	ug/L	92
70) 1,2,4-trichlorobenzene	13.591	180	2335	1.816	ug/L	90
71) Naphthalene	13.780	128	5356	1.205	ug/L #	93
72) 1,2,3-Trichlorobenzene	13.969	180	2215	1.676	ug/L	98

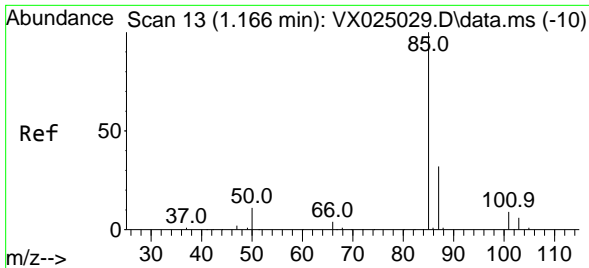
(#) = qualifier out of range (m) = manual integration (+) = signals summed

Data Path : Z:\voasrv\HPCHEM1\MSVOA_X\Data\VX110121\
 Data File : VX025037.D
 Acq On : 01 Nov 2021 17:01
 Operator : JC/MD
 Sample : MDL07
 Misc : 5.0mL/MSVOA_X/WATER
 ALS Vial : 6 Sample Multiplier: 1

Instrument :
 MSVOA_X
 ClientSampleId :

Quant Time: Nov 02 03:50:44 2021
 Quant Method : Z:\voasrv\HPCHEM1\MSVOA_X\Method\SFAMXLM102821WMA.M
 Quant Title : VOC Analysis
 QLast Update : Tue Nov 02 03:29:47 2021
 Response via : Initial Calibration

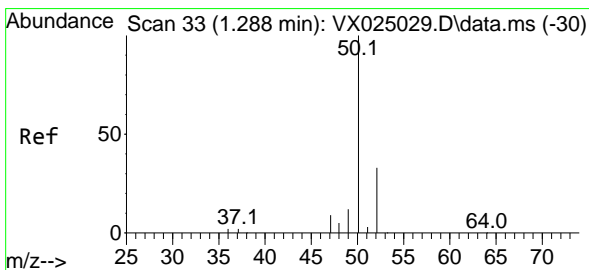
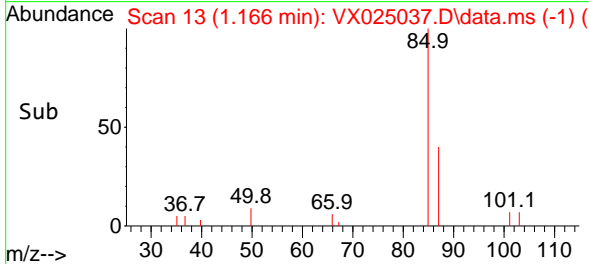
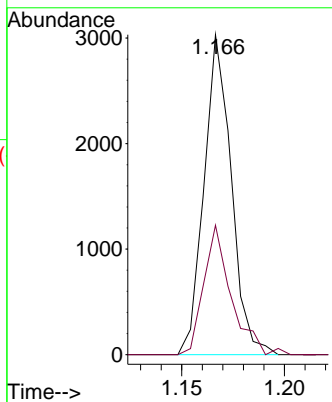
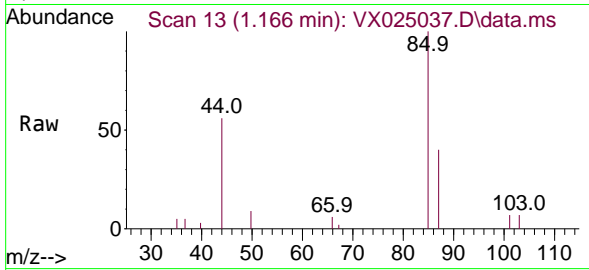




#2
 Dichlorodifluoromethane
 Concen: 1.775 ug/L
 RT: 1.166 min Scan# 11
 Delta R.T. 0.000 min
 Lab File: VX025037.D
 Acq: 01 Nov 2021 17:01

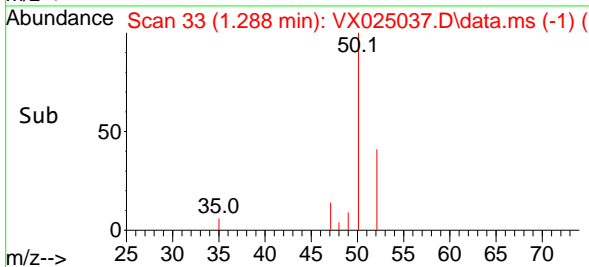
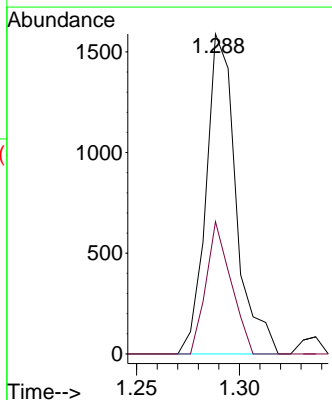
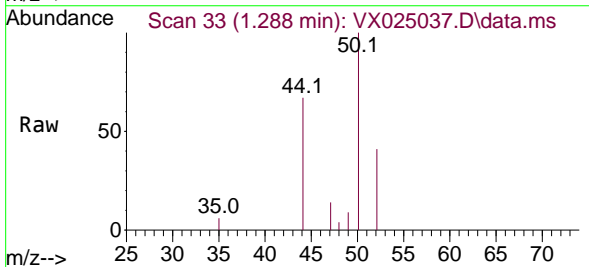
Instrument :
 MSVOA_X
 ClientSampleId :

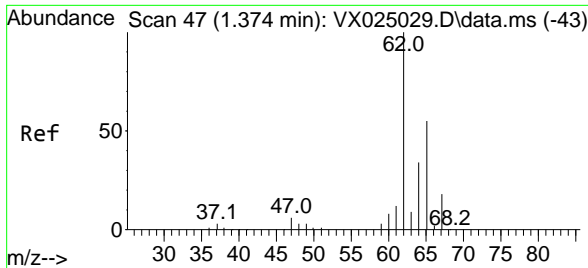
Tgt Ion: 85 Resp: 2798
 Ion Ratio Lower Upper
 85 100
 87 39.9 25.3 37.9#



#3
 Chloromethane
 Concen: 1.469 ug/L
 RT: 1.288 min Scan# 33
 Delta R.T. 0.000 min
 Lab File: VX025037.D
 Acq: 01 Nov 2021 17:01

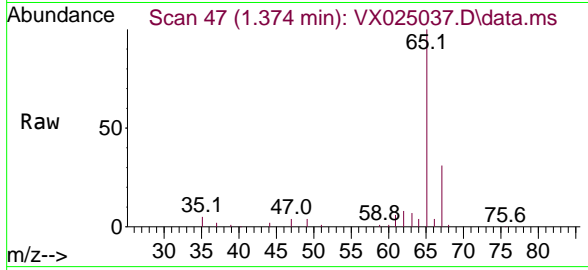
Tgt Ion: 50 Resp: 1611
 Ion Ratio Lower Upper
 50 100
 52 41.3 28.0 52.0



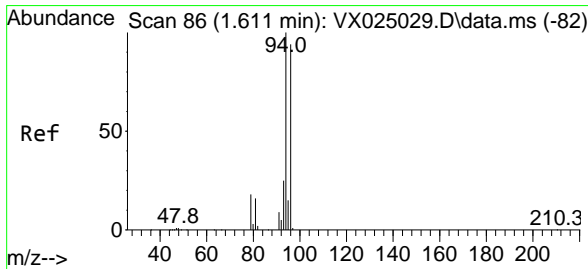
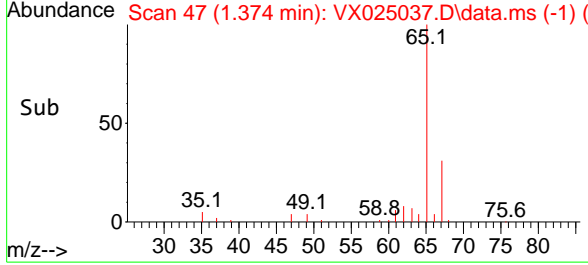
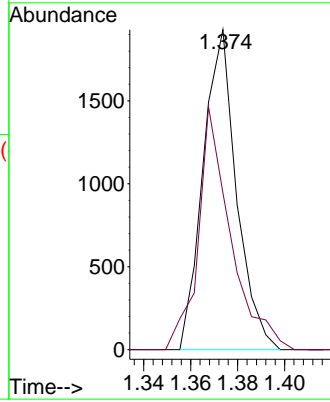


#5
 Vinyl chloride
 Concen: 1.544 ug/L
 RT: 1.374 min Scan# 41
 Delta R.T. 0.000 min
 Lab File: VX025037.D
 Acq: 01 Nov 2021 17:01

Instrument :
 MSVOA_X
 ClientSampleId :

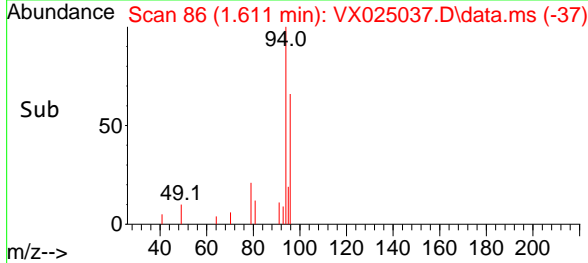
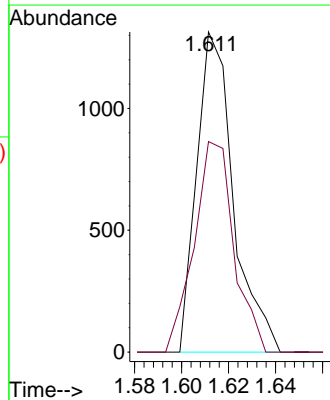
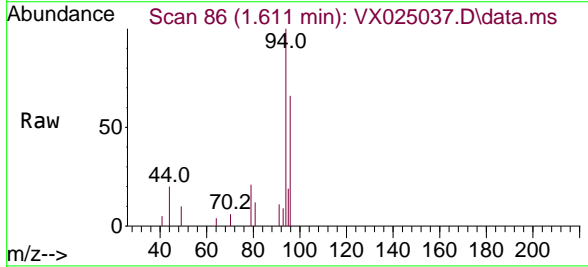


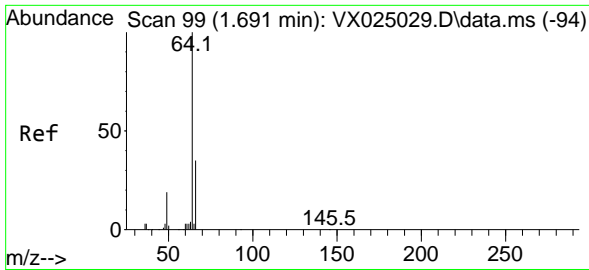
Tgt Ion: 62 Resp: 1905
 Ion Ratio Lower Upper
 62 100
 64 49.0 23.6 43.8#



#6
 Bromomethane
 Concen: 1.796 ug/L
 RT: 1.611 min Scan# 86
 Delta R.T. 0.000 min
 Lab File: VX025037.D
 Acq: 01 Nov 2021 17:01

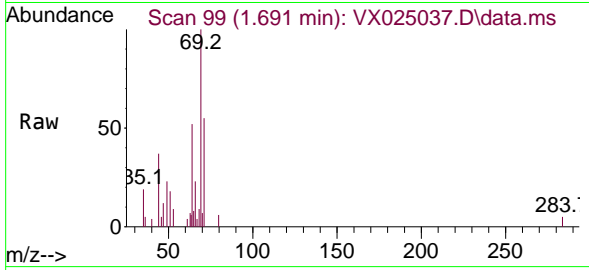
Tgt Ion: 94 Resp: 1425
 Ion Ratio Lower Upper
 94 100
 96 65.8 62.9 116.9



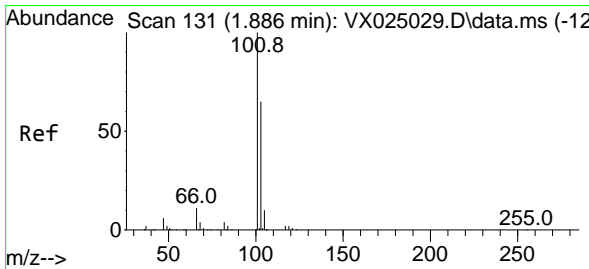
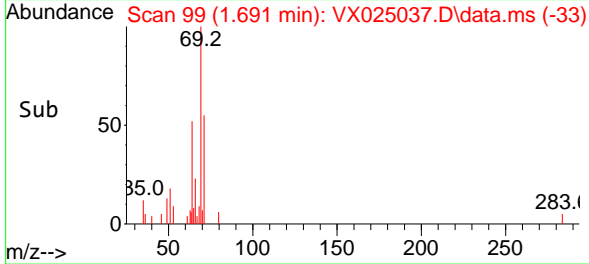
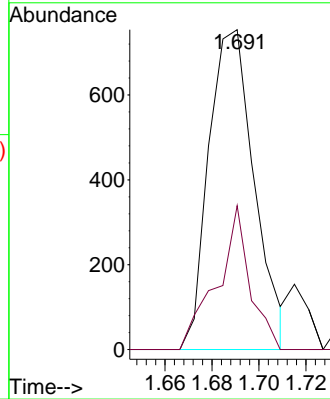


#8
 Chloroethane
 Concen: 1.635 ug/L
 RT: 1.691 min Scan# 99
 Delta R.T. 0.000 min
 Lab File: VX025037.D
 Acq: 01 Nov 2021 17:01

Instrument : MSVOA_X
 ClientSampleId :

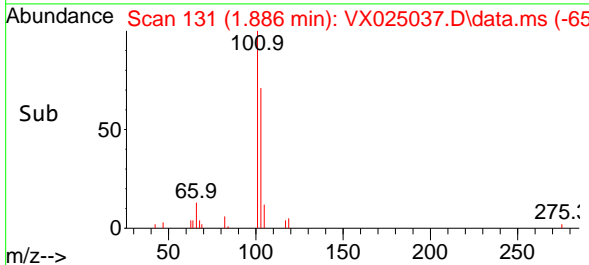
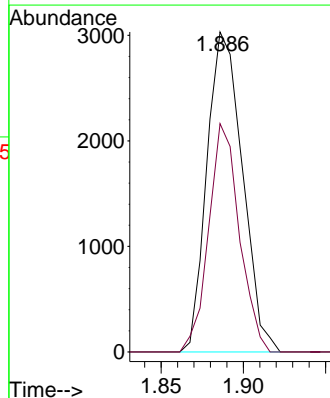
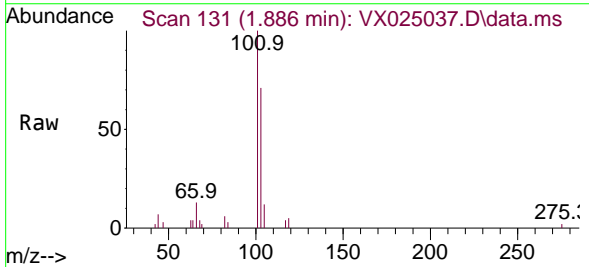


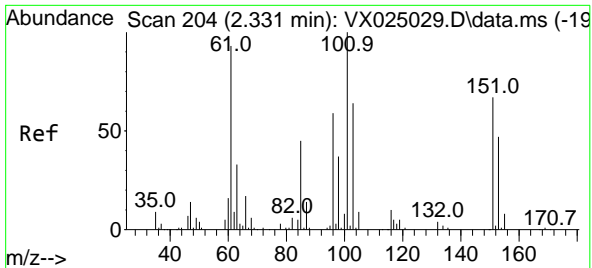
Tgt Ion: 64 Resp: 1019
 Ion Ratio Lower Upper
 64 100
 66 45.0 23.3 43.3#



#9
 Trichlorofluoromethane
 Concen: 1.661 ug/L
 RT: 1.886 min Scan# 131
 Delta R.T. 0.000 min
 Lab File: VX025037.D
 Acq: 01 Nov 2021 17:01

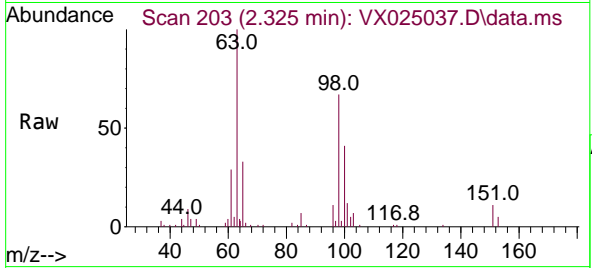
Tgt Ion: 101 Resp: 4547
 Ion Ratio Lower Upper
 101 100
 103 61.7 51.4 77.0



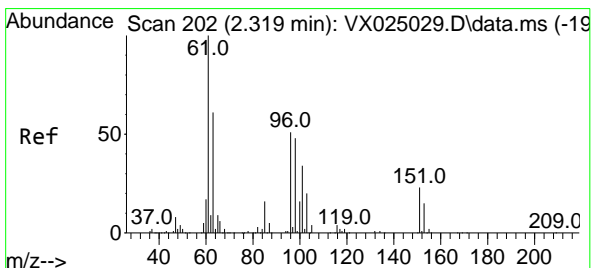
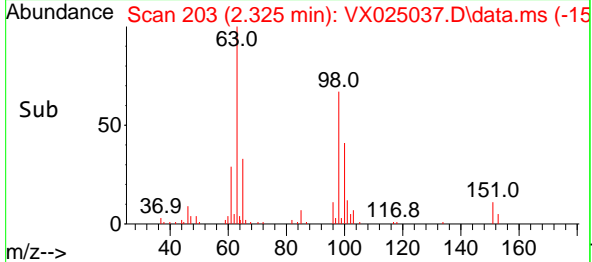
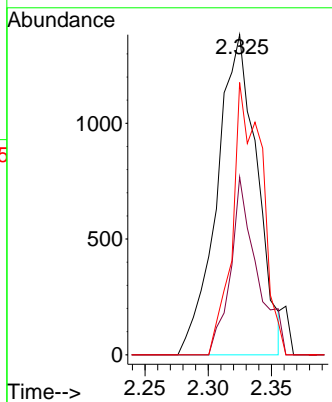


#10
 1,1,2-Trichloro-1,2,2-trifluoroethane
 Concen: 2.449 ug/L
 RT: 2.325 min Scan# 203
 Delta R.T. -0.006 min
 Lab File: VX025037.D
 Acq: 01 Nov 2021 17:01

Instrument : MSVOA_X
 ClientSampleId :

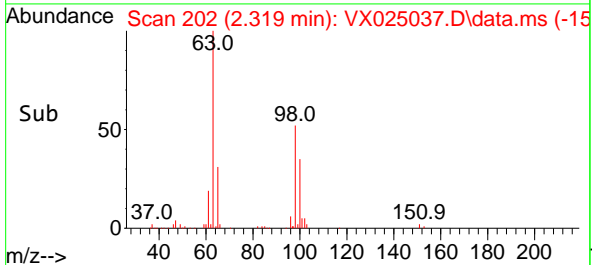
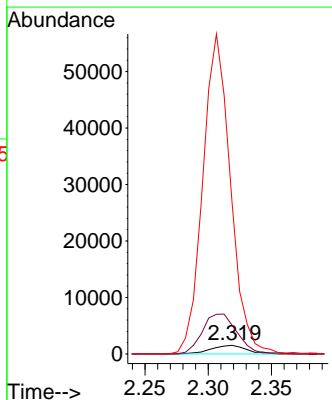
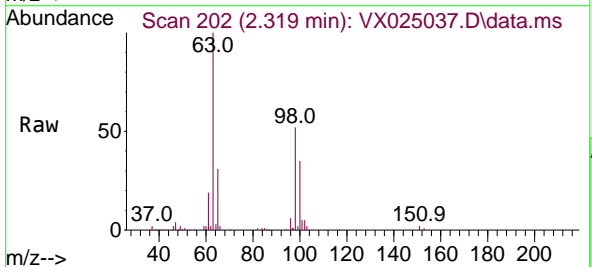


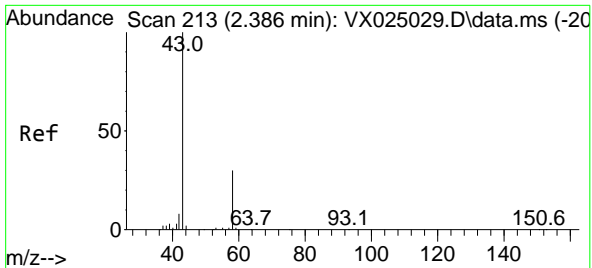
Tgt Ion:101 Resp: 3042
 Ion Ratio Lower Upper
 101 100
 85 34.1 35.3 52.9#
 151 35.0 62.3 93.5#



#12
 1,1-Dichloroethene
 Concen: 2.860 ug/L
 RT: 2.319 min Scan# 202
 Delta R.T. 0.000 min
 Lab File: VX025037.D
 Acq: 01 Nov 2021 17:01

Tgt Ion: 96 Resp: 2988
 Ion Ratio Lower Upper
 96 100
 61 332.1 109.9 204.1#
 63 1763.4 92.4 171.6#

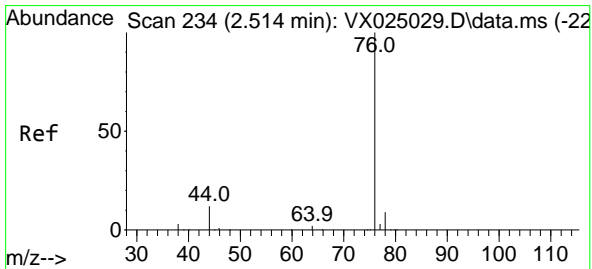
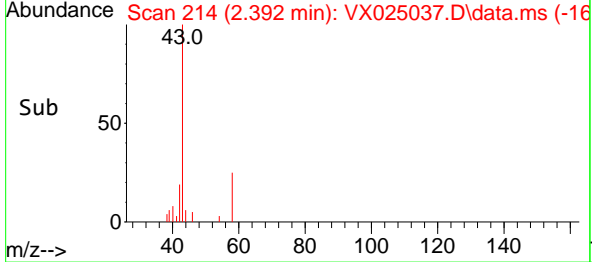
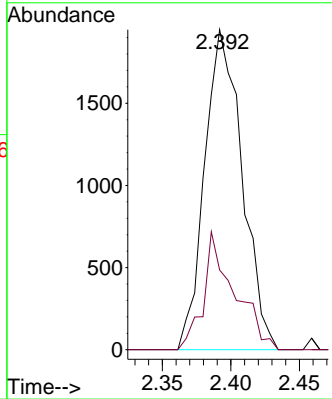
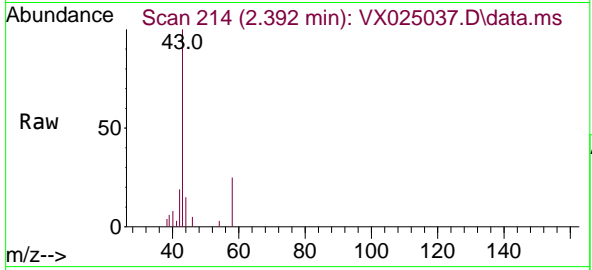




#13
 Acetone
 Concen: 3.647 ug/L
 RT: 2.392 min Scan# 213
 Delta R.T. 0.006 min
 Lab File: VX025037.D
 Acq: 01 Nov 2021 17:01

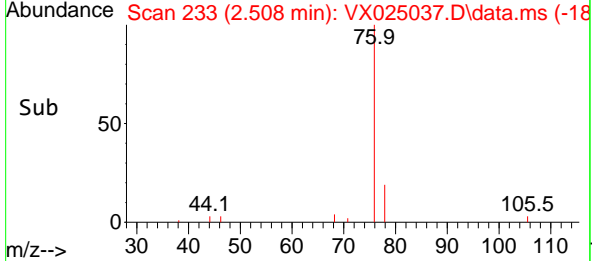
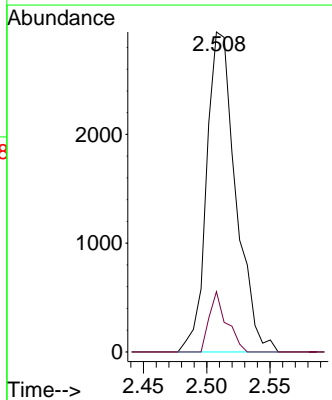
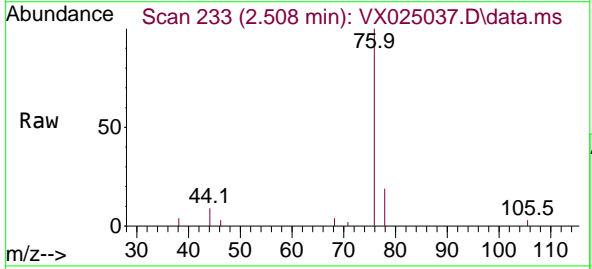
Instrument : MSVOA_X
 ClientSampleId :

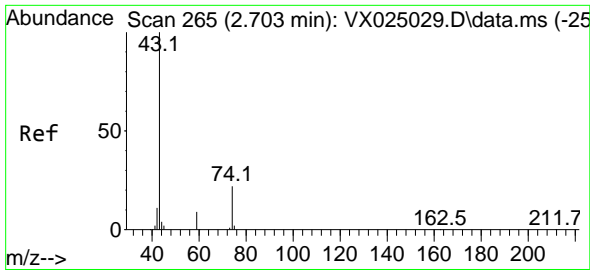
Tgt Ion: 43 Resp: 3707
 Ion Ratio Lower Upper
 43 100
 58 26.5 0.0 64.8



#14
 Carbon disulfide
 Concen: 1.669 ug/L
 RT: 2.508 min Scan# 233
 Delta R.T. -0.006 min
 Lab File: VX025037.D
 Acq: 01 Nov 2021 17:01

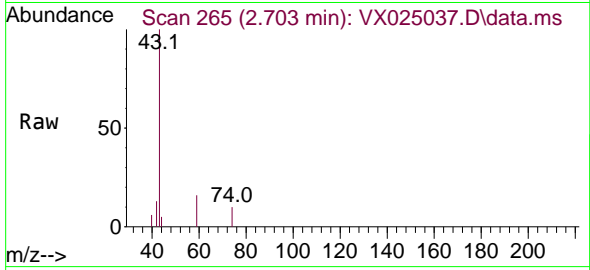
Tgt Ion: 76 Resp: 4726
 Ion Ratio Lower Upper
 76 100
 78 18.9 7.2 10.8#



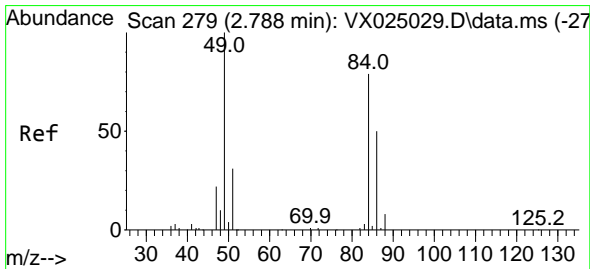
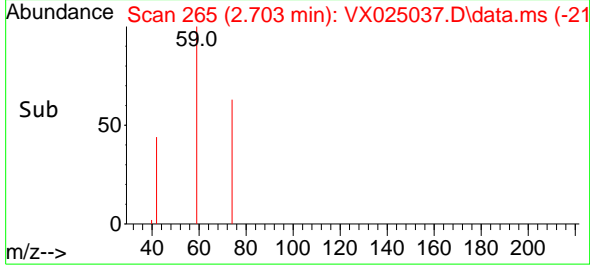
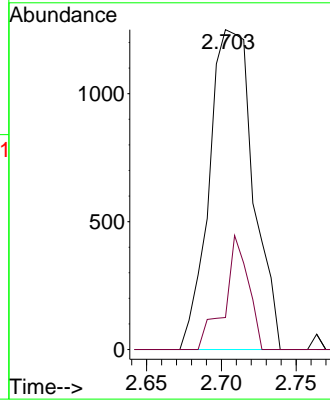


#15
 Methyl Acetate
 Concen: 1.743 ug/L
 RT: 2.703 min Scan# 201
 Delta R.T. 0.000 min
 Lab File: VX025037.D
 Acq: 01 Nov 2021 17:01

Instrument : MSVOA_X
 ClientSampleId :

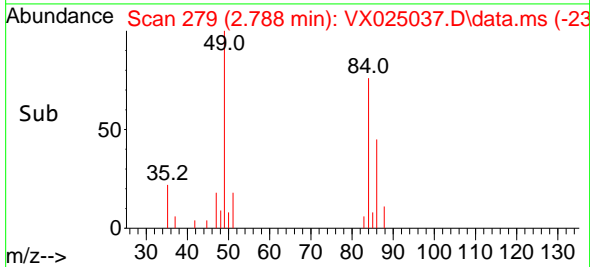
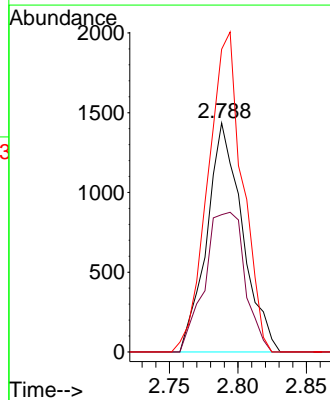
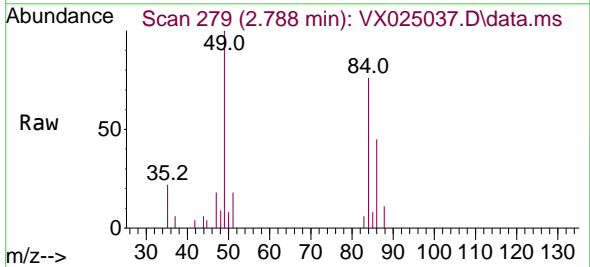


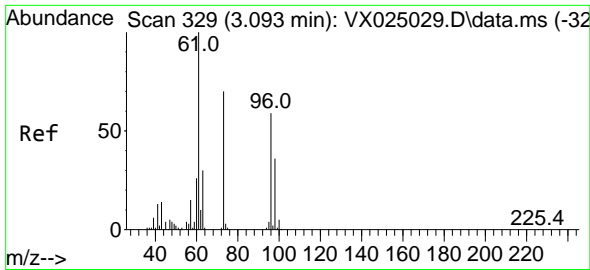
Tgt Ion: 43 Resp: 2562
 Ion Ratio Lower Upper
 43 100
 74 15.7 28.6 42.8#



#16
 Methylene chloride
 Concen: 2.186 ug/L
 RT: 2.788 min Scan# 279
 Delta R.T. 0.000 min
 Lab File: VX025037.D
 Acq: 01 Nov 2021 17:01

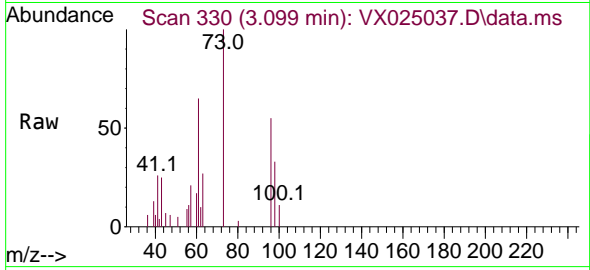
Tgt Ion: 84 Resp: 2586
 Ion Ratio Lower Upper
 84 100
 86 60.0 44.4 82.5
 49 132.3 64.0 118.8#



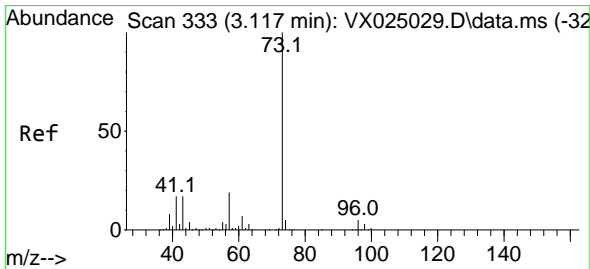
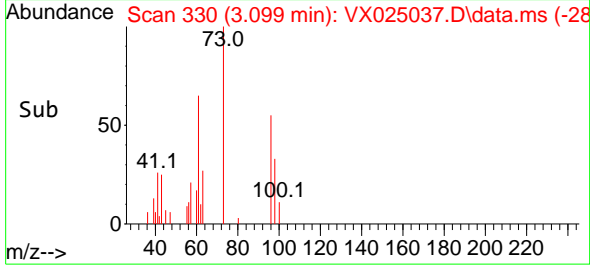
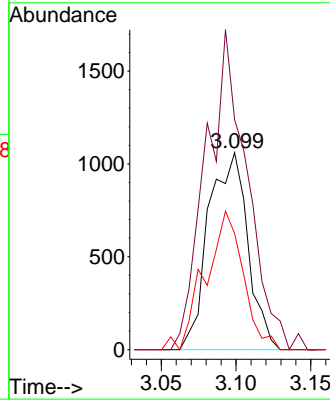


#17
 trans-1,2-Dichloroethene
 Concen: 1.809 ug/L
 RT: 3.099 min Scan# 311
 Delta R.T. 0.006 min
 Lab File: VX025037.D
 Acq: 01 Nov 2021 17:01

Instrument : MSVOA_X
 ClientSampleId :

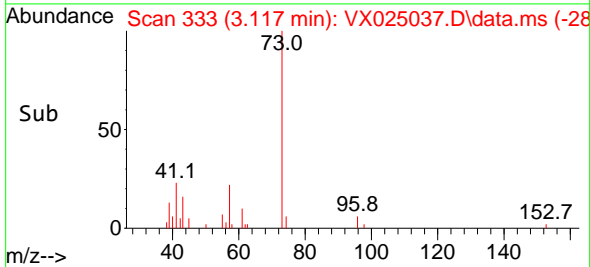
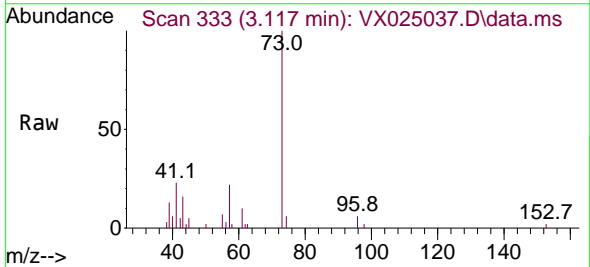
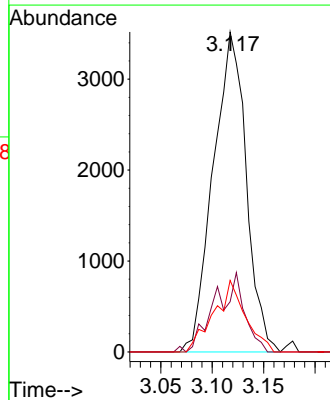


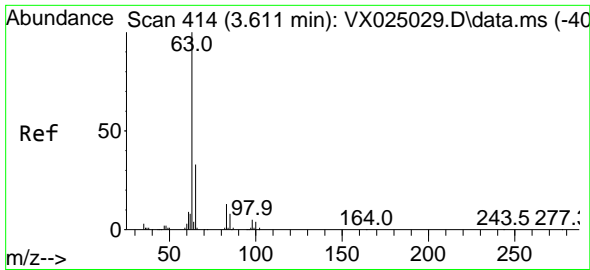
Tgt Ion: 96 Resp: 1935
 Ion Ratio Lower Upper
 96 100
 61 116.9 99.4 184.6
 98 59.0 47.0 87.2



#18
 Methyl tert-butyl Ether
 Concen: 1.776 ug/L
 RT: 3.117 min Scan# 333
 Delta R.T. 0.000 min
 Lab File: VX025037.D
 Acq: 01 Nov 2021 17:01

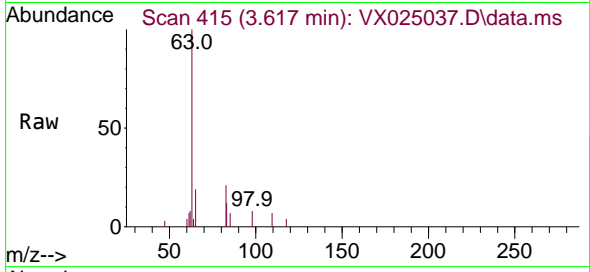
Tgt Ion: 73 Resp: 7846
 Ion Ratio Lower Upper
 73 100
 43 11.5 12.4 18.6#
 57 12.3 13.2 19.8#





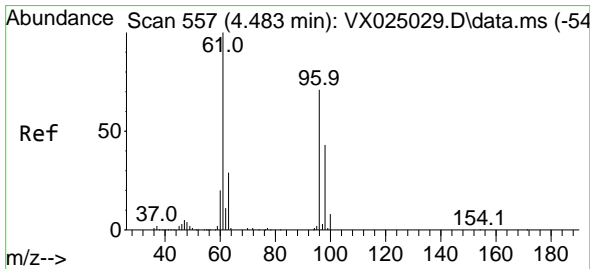
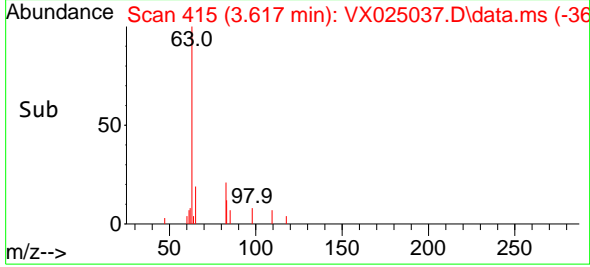
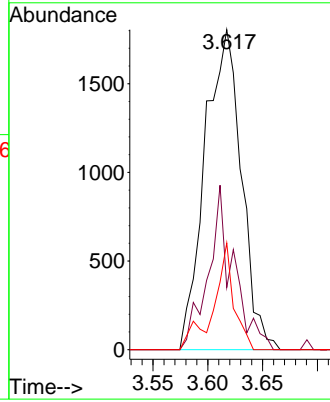
#19
 1,1-Dichloroethane
 Concen: 1.681 ug/L
 RT: 3.617 min Scan# 414
 Delta R.T. 0.006 min
 Lab File: VX025037.D
 Acq: 01 Nov 2021 17:01

Instrument : MSVOA_X
 ClientSampleId :



Tgt Ion: 63 Resp: 4180

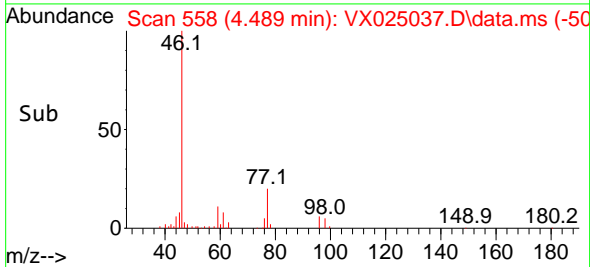
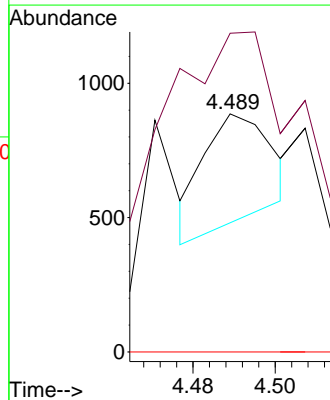
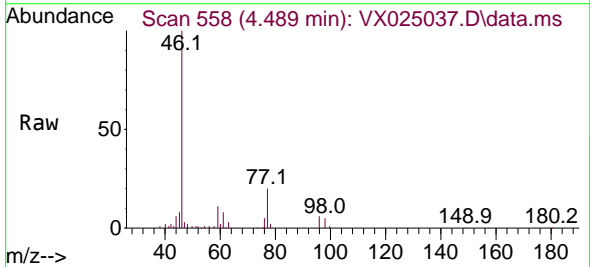
Ion	Ratio	Lower	Upper
63	100		
65	19.4	24.5	45.5#
83	33.4	11.7	21.7#

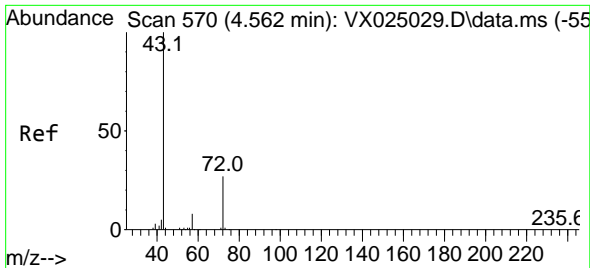


#20
 cis-1,2-Dichloroethene
 Concen: 0.384 ug/L
 RT: 4.489 min Scan# 558
 Delta R.T. 0.006 min
 Lab File: VX025037.D
 Acq: 01 Nov 2021 17:01

Tgt Ion: 96 Resp: 464

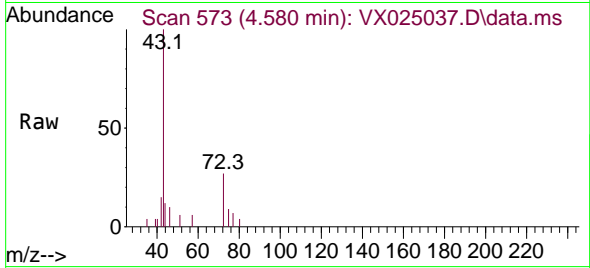
Ion	Ratio	Lower	Upper
96	100		
61	133.9	82.6	153.4
68	0.0	0.0	0.0



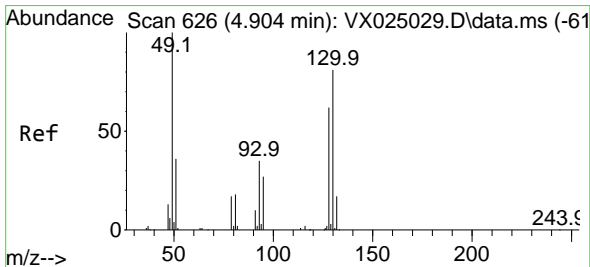
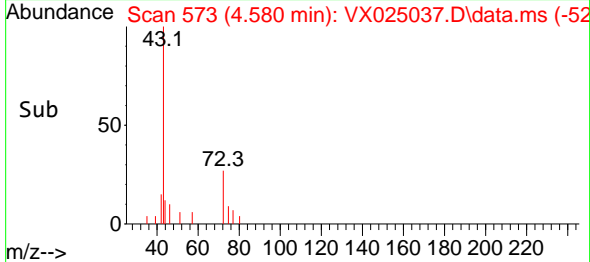
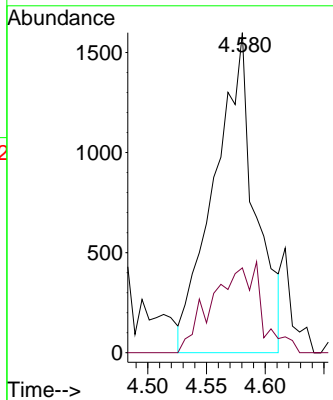


#22
 2-Butanone
 Concen: 3.098 ug/L
 RT: 4.580 min Scan# 51
 Delta R.T. 0.018 min
 Lab File: VX025037.D
 Acq: 01 Nov 2021 17:01

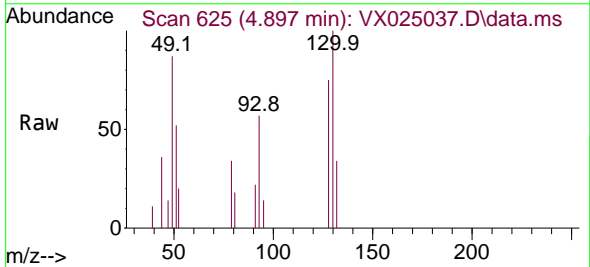
Instrument :
 MSVOA_X
 ClientSampleId :



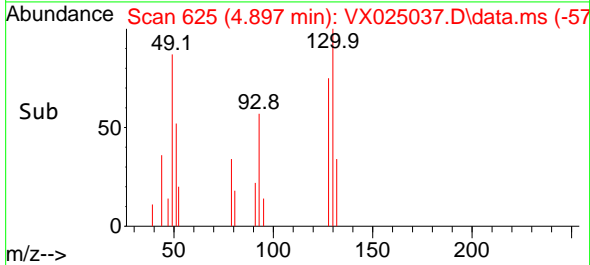
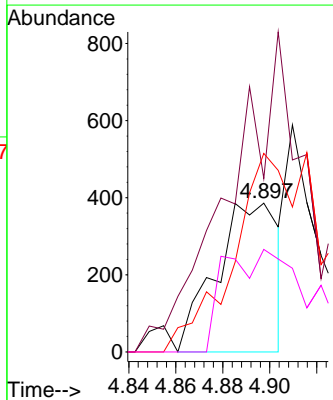
Tgt Ion: 43 Resp: 3877
 Ion Ratio Lower Upper
 43 100
 72 9.5 18.4 55.0#

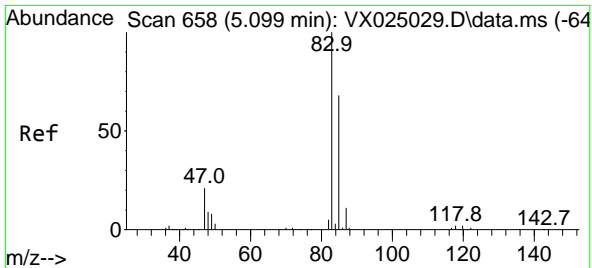


#23
 Bromochloromethane
 Concen: 1.182 ug/L
 RT: 4.897 min Scan# 625
 Delta R.T. -0.006 min
 Lab File: VX025037.D
 Acq: 01 Nov 2021 17:01



Tgt Ion: 128 Resp: 714
 Ion Ratio Lower Upper
 128 100
 49 116.6 71.5 132.7
 130 133.4 84.3 156.5
 51 68.9 27.9 41.9#

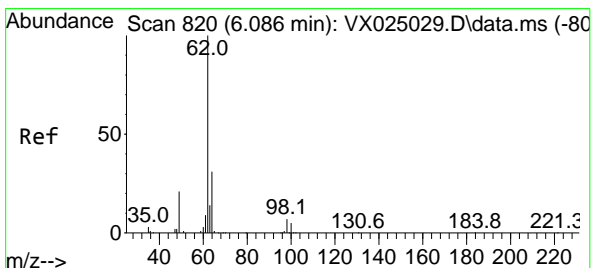
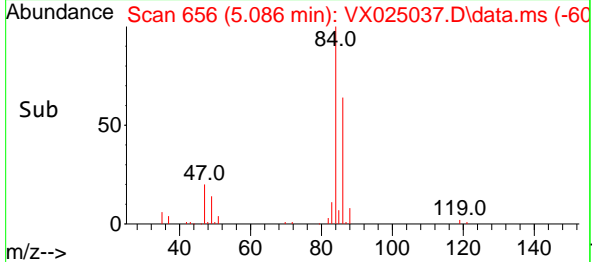
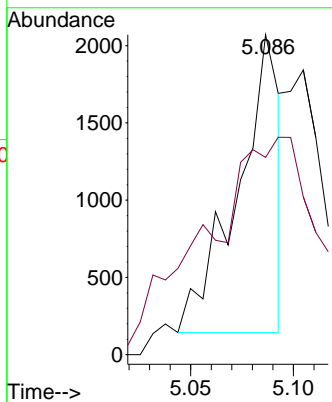
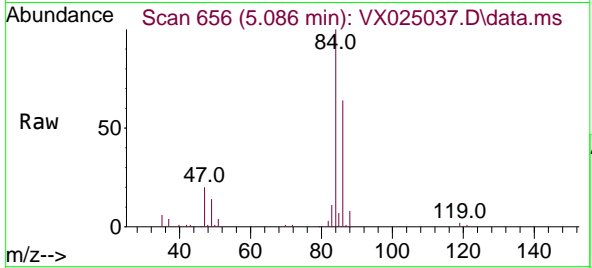




#25
 Chloroform
 Concen: 0.994 ug/L
 RT: 5.086 min Scan# 61
 Delta R.T. -0.012 min
 Lab File: VX025037.D
 Acq: 01 Nov 2021 17:01

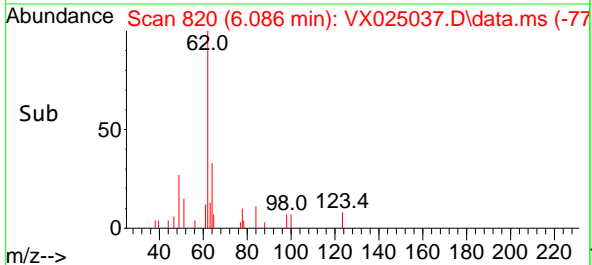
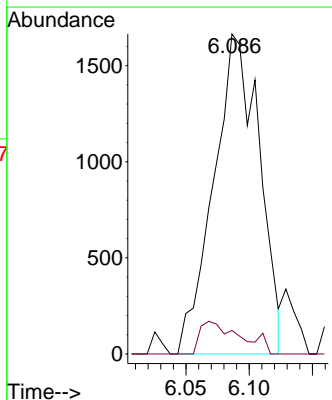
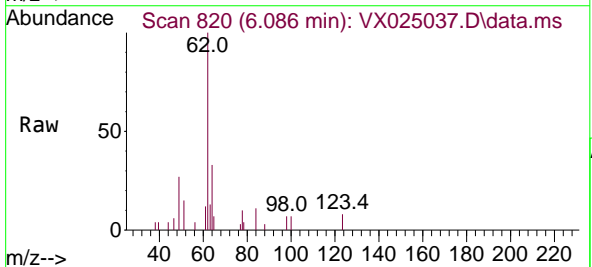
Instrument :
 MSVOA_X
 ClientSampleId :

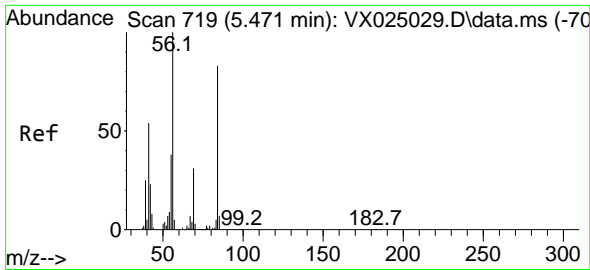
Tgt Ion: 83 Resp: 2749
 Ion Ratio Lower Upper
 83 100
 85 61.7 46.3 86.1



#27
 1,2-Dichloroethane
 Concen: 1.707 ug/L
 RT: 6.086 min Scan# 820
 Delta R.T. 0.000 min
 Lab File: VX025037.D
 Acq: 01 Nov 2021 17:01

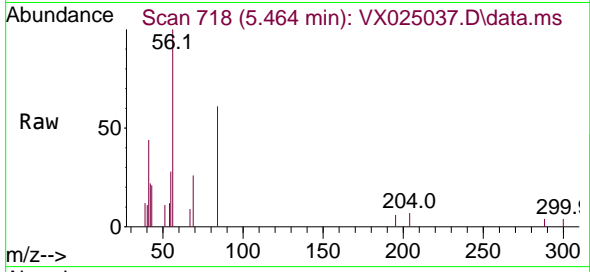
Tgt Ion: 62 Resp: 4176
 Ion Ratio Lower Upper
 62 100
 98 7.3 5.5 8.3



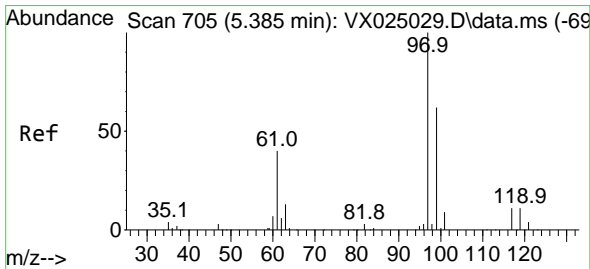
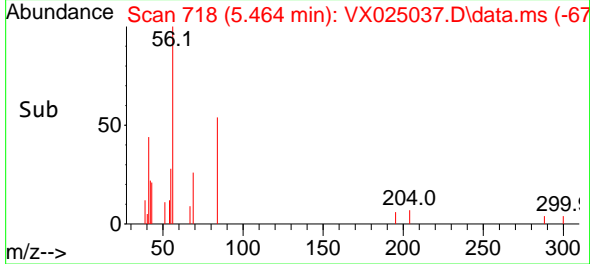
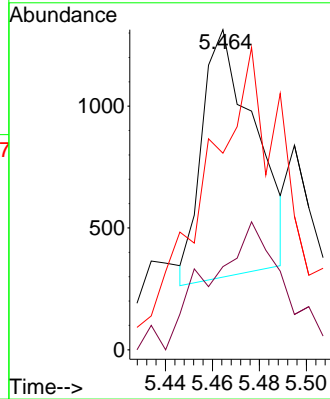


#29
 Cyclohexane
 Concen: 0.758 ug/L
 RT: 5.464 min Scan# 719
 Delta R.T. -0.006 min
 Lab File: VX025037.D
 Acq: 01 Nov 2021 17:01

Instrument : MSVOA_X
 ClientSampleId :

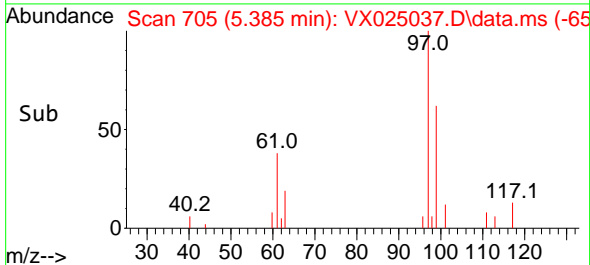
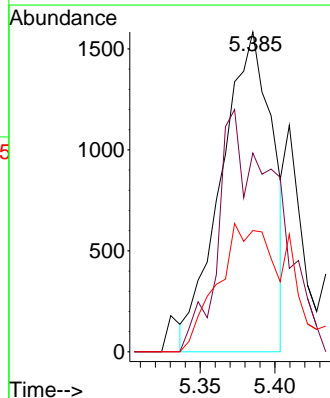
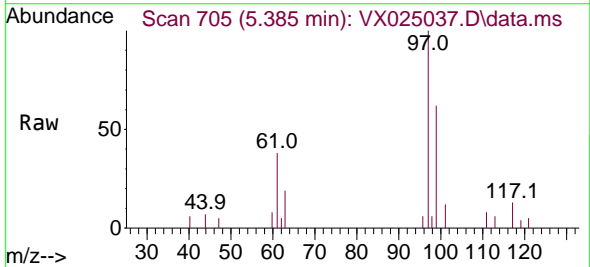


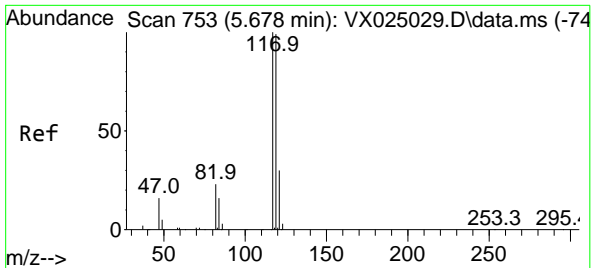
Tgt Ion: 56 Resp: 1581
 Ion Ratio Lower Upper
 56 100
 69 17.0 30.8 46.2#
 84 70.7 86.8 130.2#



#30
 1,1,1-Trichloroethane
 Concen: 1.422 ug/L
 RT: 5.385 min Scan# 705
 Delta R.T. 0.000 min
 Lab File: VX025037.D
 Acq: 01 Nov 2021 17:01

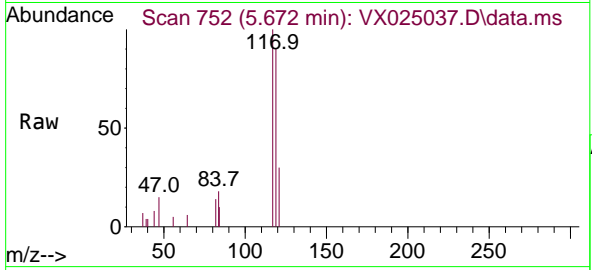
Tgt Ion: 97 Resp: 3784
 Ion Ratio Lower Upper
 97 100
 99 4.0 53.1 79.7#
 61 0.0 26.3 39.5#



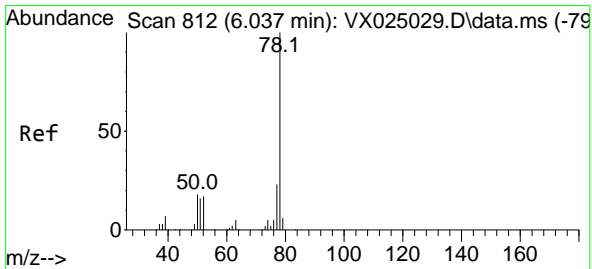
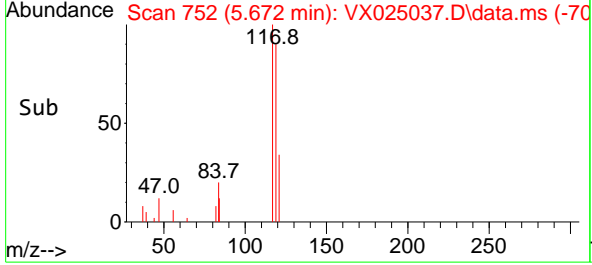
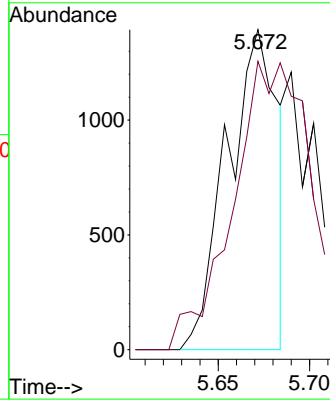


#31
 Carbon tetrachloride
 Concen: 1.187 ug/L
 RT: 5.672 min Scan# 752
 Delta R.T. -0.006 min
 Lab File: VX025037.D
 Acq: 01 Nov 2021 17:01

Instrument : MSVOA_X
 ClientSampleId :

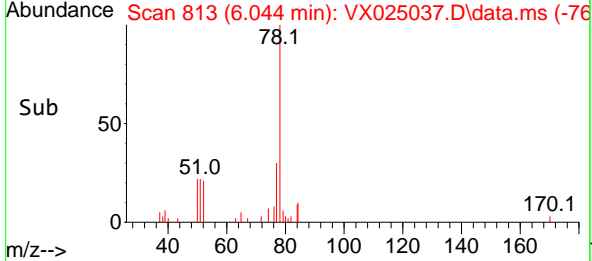
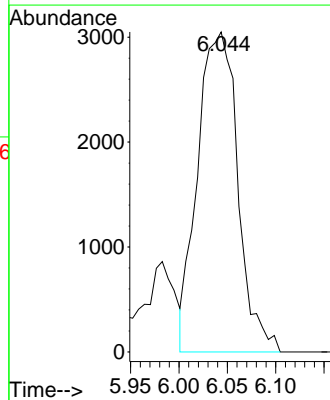
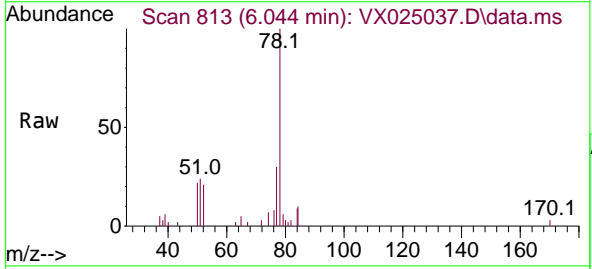


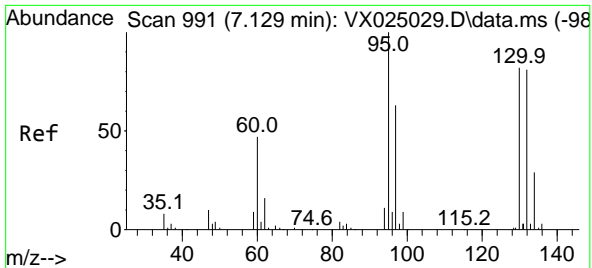
Tgt Ion:117 Resp: 2674
 Ion Ratio Lower Upper
 117 100
 119 53.6 76.0 114.0#



#33
 Benzene
 Concen: 1.848 ug/L
 RT: 6.044 min Scan# 813
 Delta R.T. 0.006 min
 Lab File: VX025037.D
 Acq: 01 Nov 2021 17:01

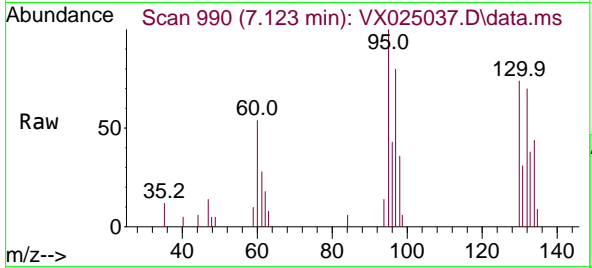
Tgt Ion: 78 Resp: 8798



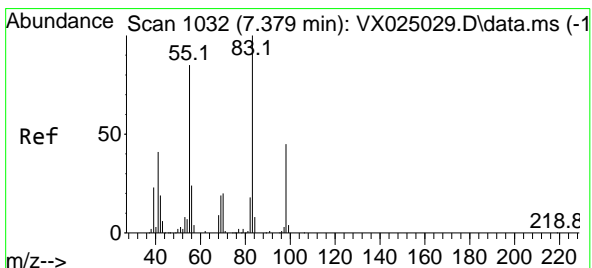
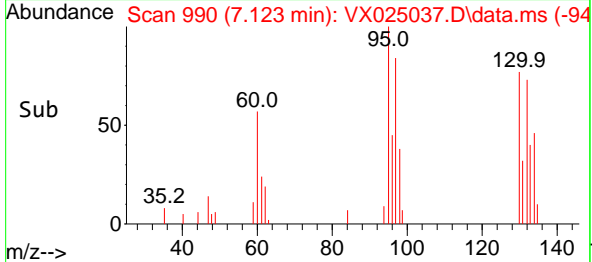
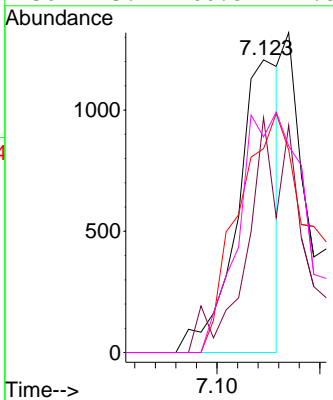


#34
 Trichloroethene
 Concen: 1.205 ug/L
 RT: 7.123 min Scan# 991
 Delta R.T. -0.006 min
 Lab File: VX025037.D
 Acq: 01 Nov 2021 17:01

Instrument : MSVOA_X
 ClientSampleId :

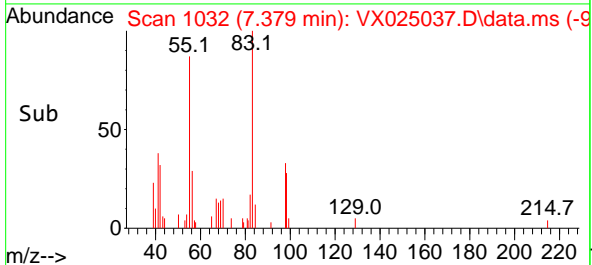
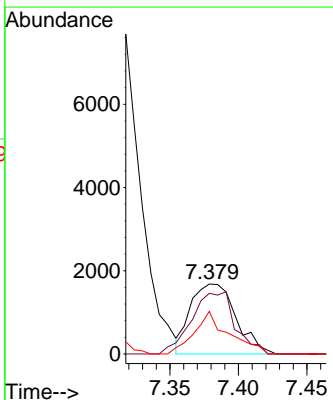
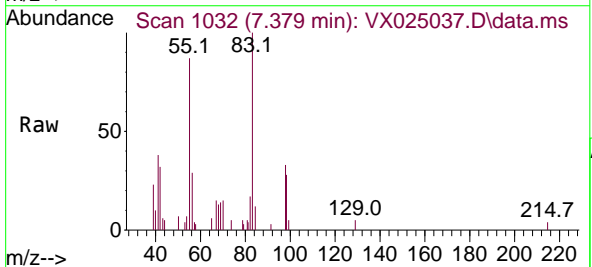


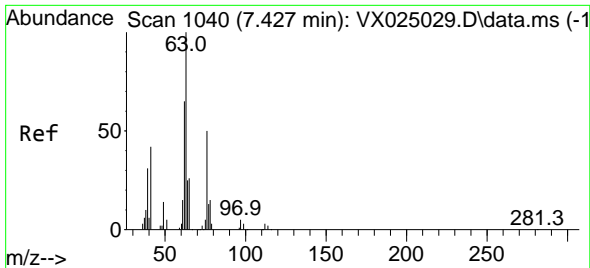
Tgt Ion: 95 Resp: 1731
 Ion Ratio Lower Upper
 95 100
 97 80.3 44.2 82.2
 132 69.7 60.1 111.5
 130 73.7 60.8 112.8



#35
 Methylcyclohexane
 Concen: 1.870 ug/L
 RT: 7.379 min Scan# 1032
 Delta R.T. 0.000 min
 Lab File: VX025037.D
 Acq: 01 Nov 2021 17:01

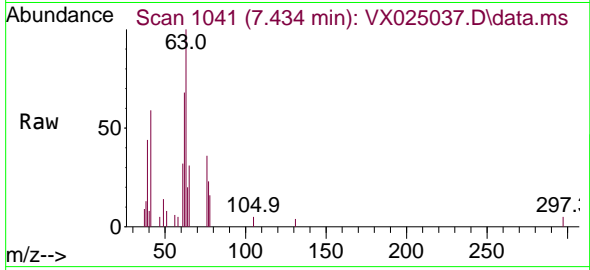
Tgt Ion: 83 Resp: 3877
 Ion Ratio Lower Upper
 83 100
 55 84.7 52.6 79.0#
 98 46.0 37.9 56.9



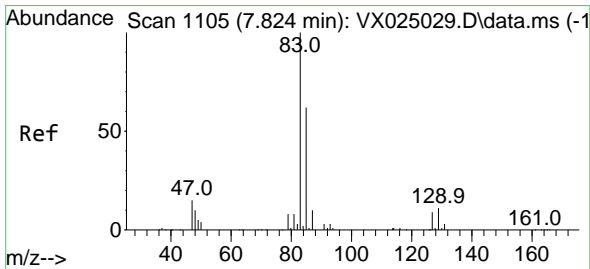
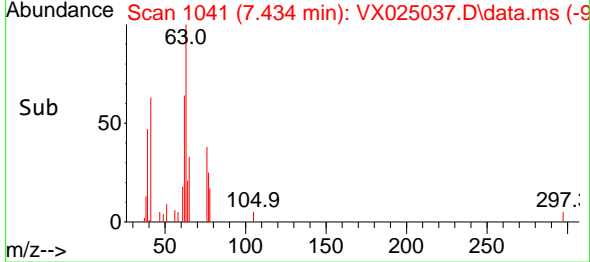
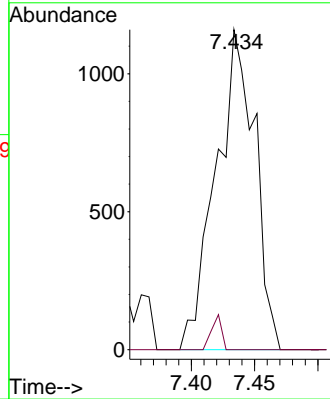


#37
 1,2-Dichloropropane
 Concen: 1.831 ug/L
 RT: 7.434 min Scan# 1041
 Delta R.T. 0.006 min
 Lab File: VX025037.D
 Acq: 01 Nov 2021 17:01

Instrument : MSVOA_X
 ClientSampleId :

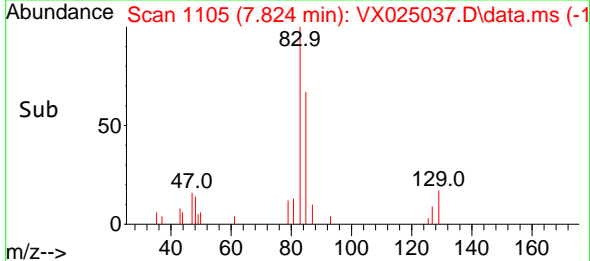
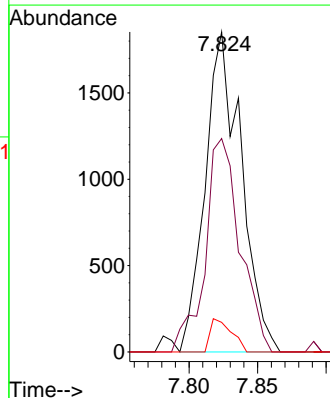
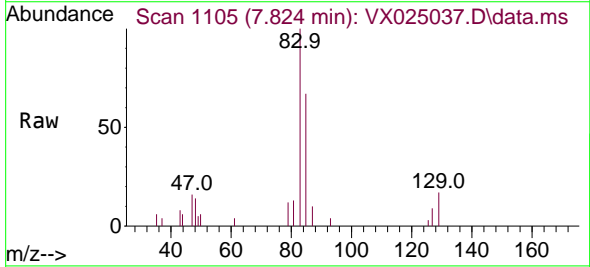


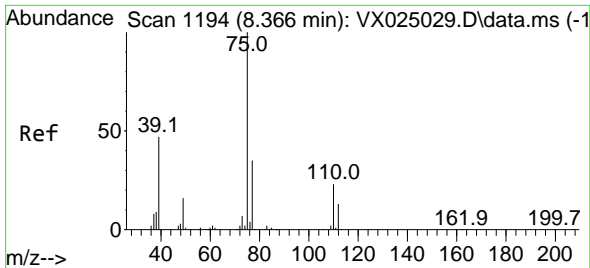
Tgt Ion: 63 Resp: 2480
 Ion Ratio Lower Upper
 63 100
 112 2.8 4.0 6.0#



#38
 Bromodichloromethane
 Concen: 1.635 ug/L
 RT: 7.824 min Scan# 1105
 Delta R.T. 0.000 min
 Lab File: VX025037.D
 Acq: 01 Nov 2021 17:01

Tgt Ion: 83 Resp: 3385
 Ion Ratio Lower Upper
 83 100
 85 66.7 46.8 87.0
 127 9.2 8.2 12.2

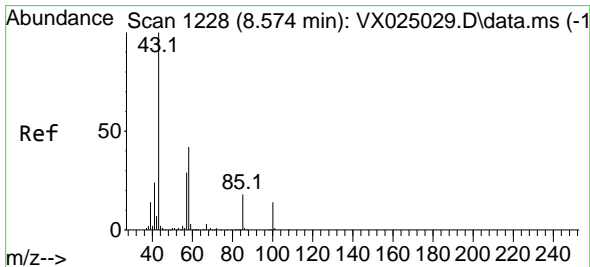
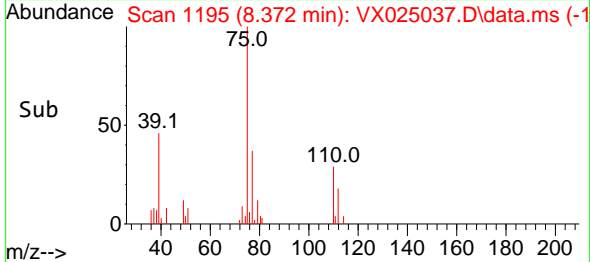
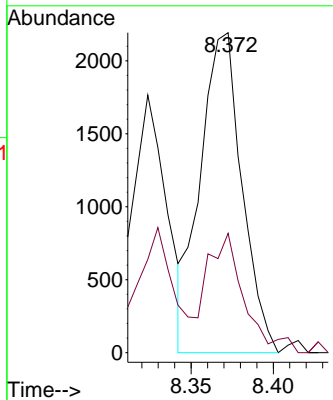
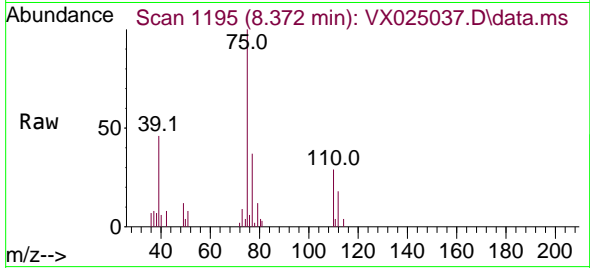




#39
 cis-1,3-Dichloropropene
 Concen: 1.757 ug/L
 RT: 8.372 min Scan# 1194
 Delta R.T. 0.006 min
 Lab File: VX025037.D
 Acq: 01 Nov 2021 17:01

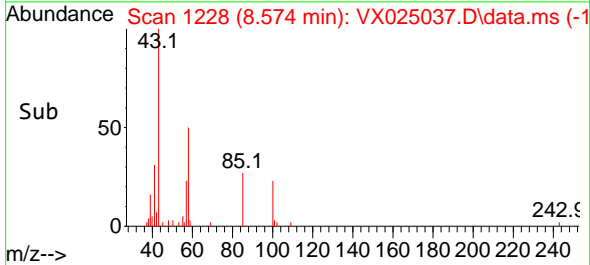
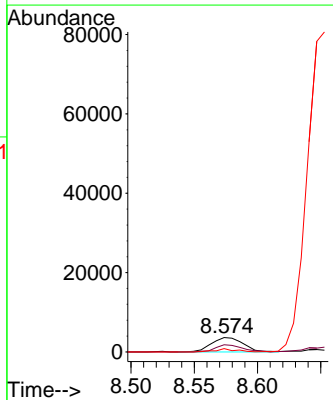
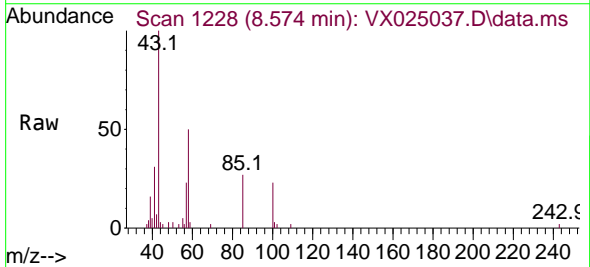
Instrument :
 MSVOA_X
 ClientSampleId :

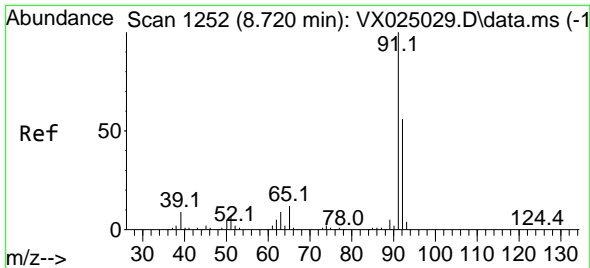
Tgt Ion: 75 Resp: 3868
 Ion Ratio Lower Upper
 75 100
 77 37.3 23.1 42.9



#40
 4-Methyl-2-pentanone
 Concen: 3.041 ug/L
 RT: 8.574 min Scan# 1228
 Delta R.T. 0.000 min
 Lab File: VX025037.D
 Acq: 01 Nov 2021 17:01

Tgt Ion: 43 Resp: 6398
 Ion Ratio Lower Upper
 43 100
 58 42.4 41.3 61.9
 100 14.2 19.6 29.4#

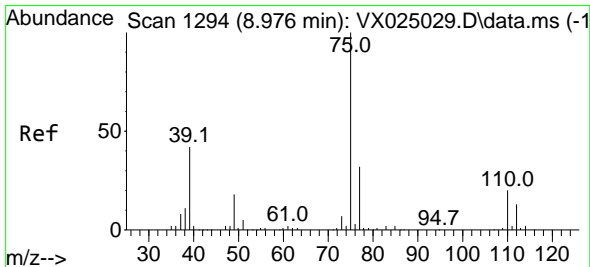
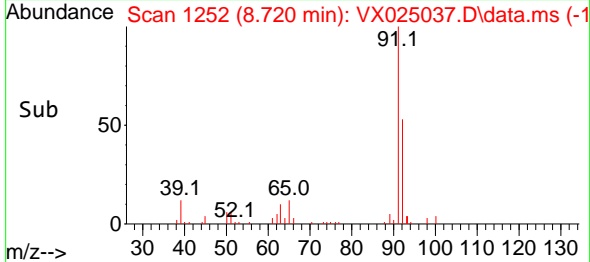
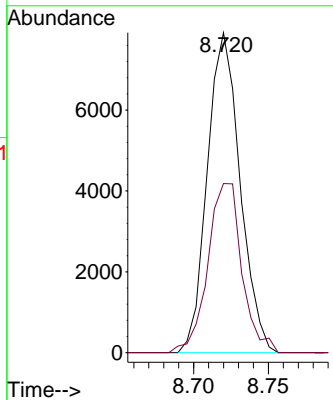
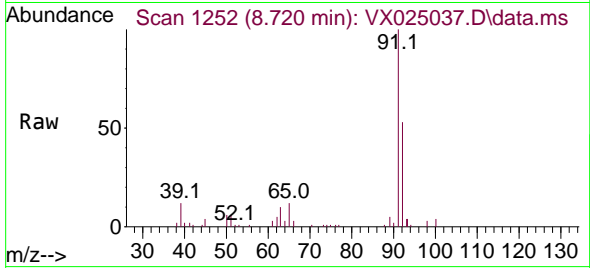




#42
 Toluene
 Concen: 2.316 ug/L
 RT: 8.720 min Scan# 1252
 Delta R.T. 0.000 min
 Lab File: VX025037.D
 Acq: 01 Nov 2021 17:01

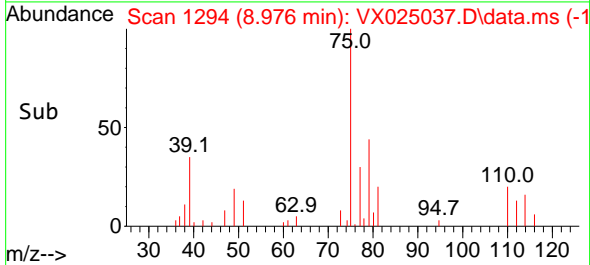
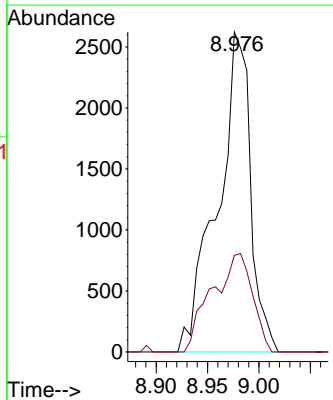
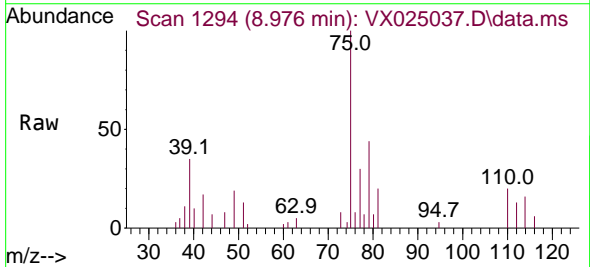
Instrument : MSVOA_X
 ClientSampleId :

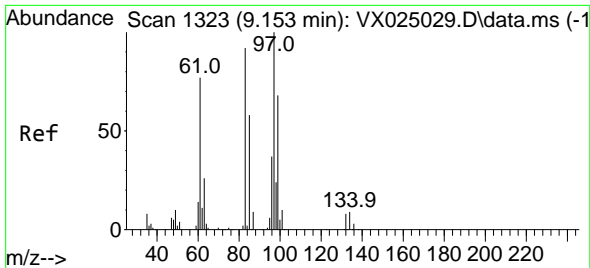
Tgt Ion: 91 Resp: 12067
 Ion Ratio Lower Upper
 91 100
 92 52.8 39.3 72.9



#44
 trans-1,3-Dichloropropene
 Concen: 2.582 ug/L
 RT: 8.976 min Scan# 1294
 Delta R.T. 0.000 min
 Lab File: VX025037.D
 Acq: 01 Nov 2021 17:01

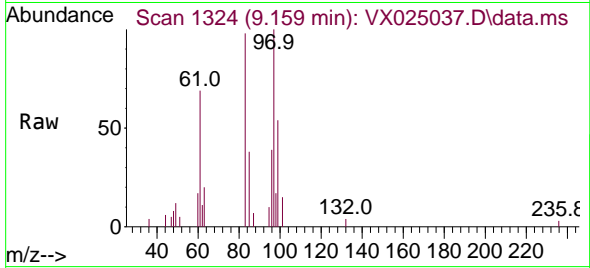
Tgt Ion: 75 Resp: 5853
 Ion Ratio Lower Upper
 75 100
 77 30.2 23.4 43.6





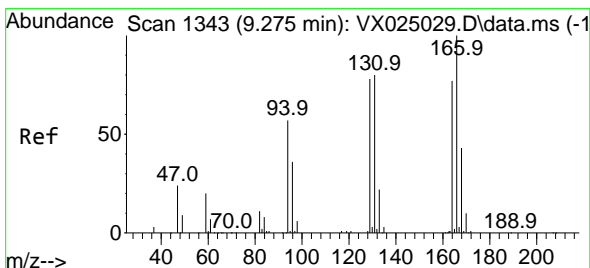
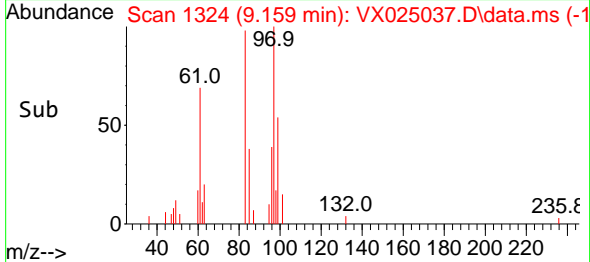
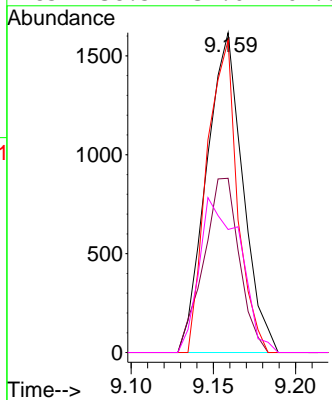
#45
 1,1,2-Trichloroethane
 Concen: 1.956 ug/L
 RT: 9.159 min Scan# 11
 Delta R.T. 0.006 min
 Lab File: VX025037.D
 Acq: 01 Nov 2021 17:01

Instrument :
 MSVOA_X
 ClientSampleId :



Tgt Ion: 97 Resp: 2481

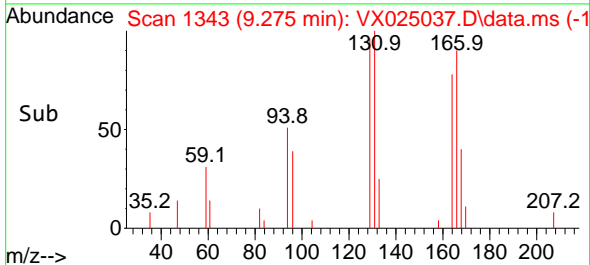
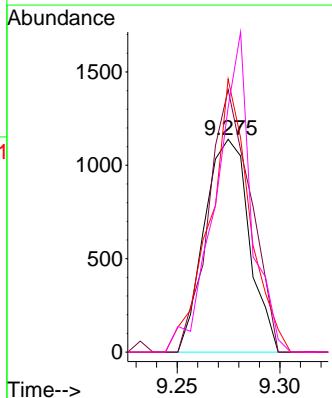
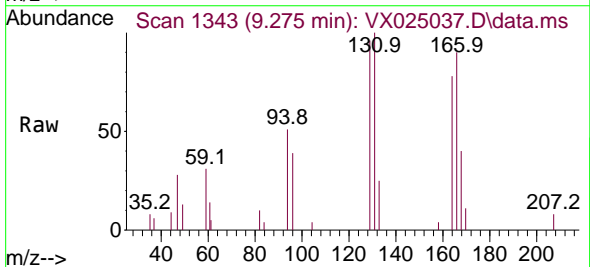
Ion	Ratio	Lower	Upper
97	100		
99	54.5	43.5	80.7
83	97.6	58.2	108.0
85	38.5	37.6	69.8

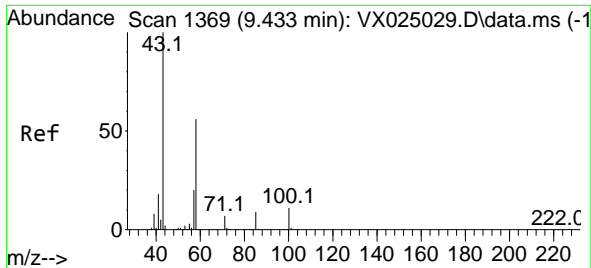


#46
 Tetrachloroethene
 Concen: 1.919 ug/L
 RT: 9.275 min Scan# 1343
 Delta R.T. 0.000 min
 Lab File: VX025037.D
 Acq: 01 Nov 2021 17:01

Tgt Ion: 164 Resp: 1721

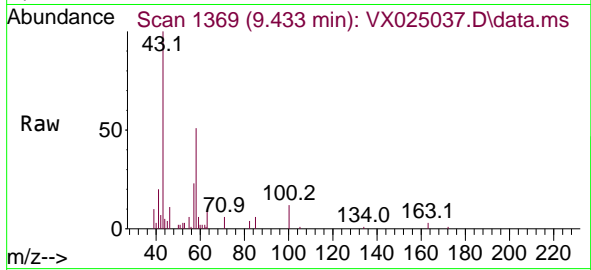
Ion	Ratio	Lower	Upper
164	100		
129	123.4	78.5	145.7
131	128.4	70.5	130.9
166	115.0	88.3	164.1





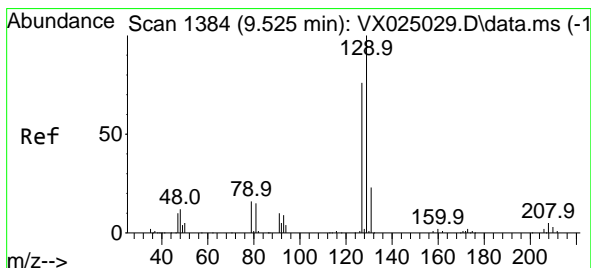
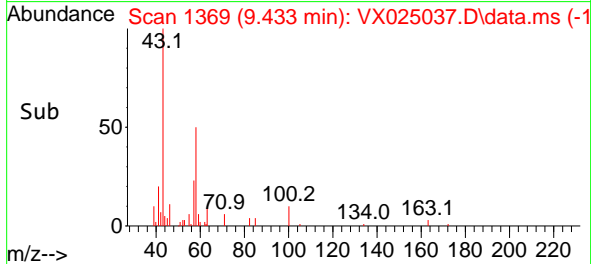
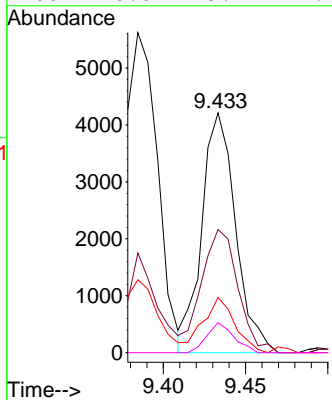
#48
 2-Hexanone
 Concen: 3.458 ug/L
 RT: 9.433 min Scan# 1369
 Delta R.T. 0.000 min
 Lab File: VX025037.D
 Acq: 01 Nov 2021 17:01

Instrument : MSVOA_X
 ClientSampleId :



Tgt Ion: 43 Resp: 6013

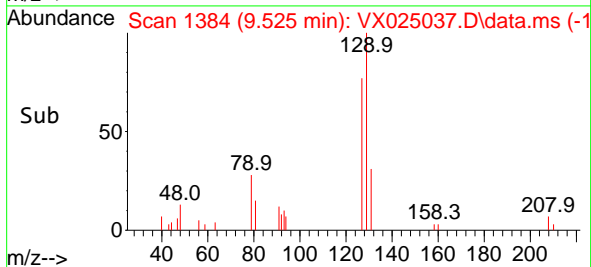
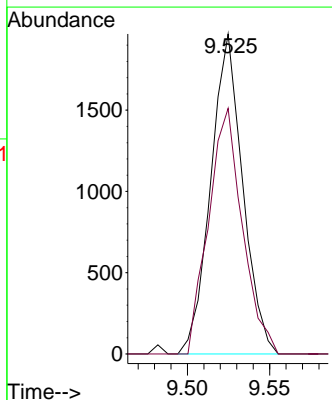
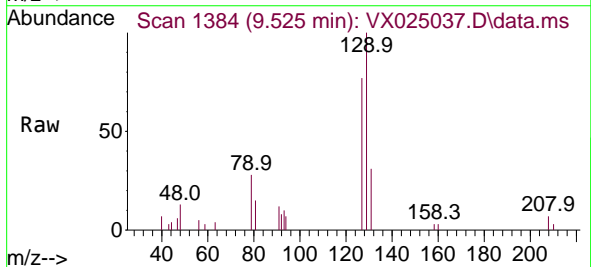
Ion	Ratio	Lower	Upper
43	100		
58	55.6	56.0	84.0#
57	22.1	20.4	30.6
100	10.0	15.1	22.7#

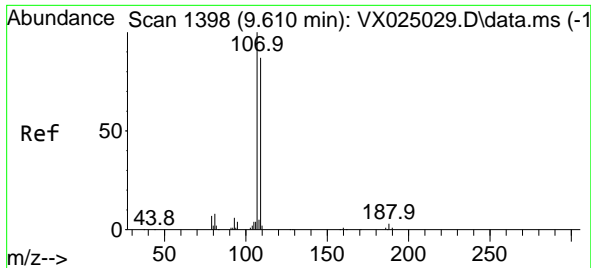


#49
 Dibromochloromethane
 Concen: 1.865 ug/L
 RT: 9.525 min Scan# 1384
 Delta R.T. 0.000 min
 Lab File: VX025037.D
 Acq: 01 Nov 2021 17:01

Tgt Ion: 129 Resp: 2662

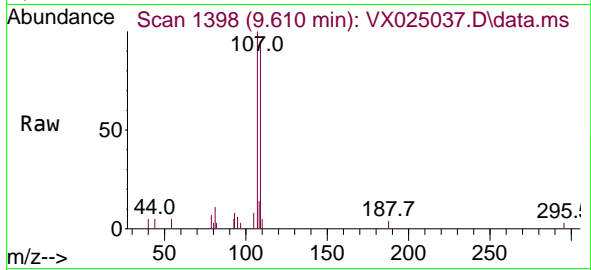
Ion	Ratio	Lower	Upper
129	100		
127	76.7	54.1	100.5



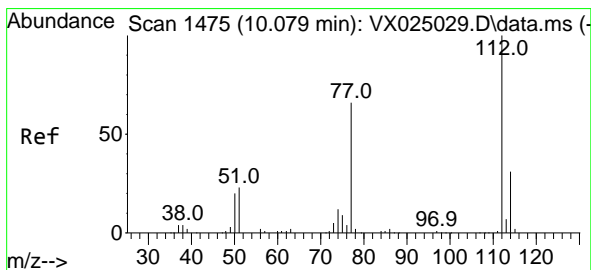
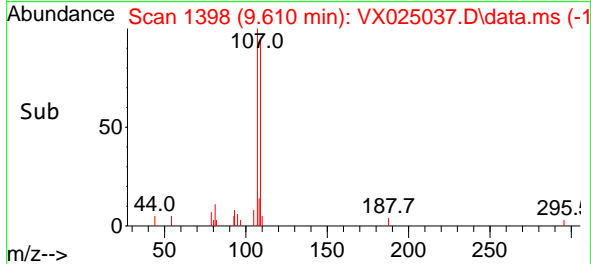
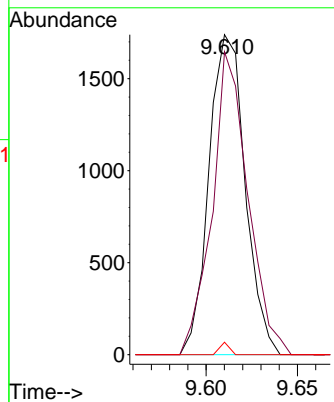


#50
 1,2-Dibromoethane
 Concen: 1.712 ug/L
 RT: 9.610 min Scan# 11
 Delta R.T. 0.000 min
 Lab File: VX025037.D
 Acq: 01 Nov 2021 17:01

Instrument :
 MSVOA_X
 ClientSampleId :

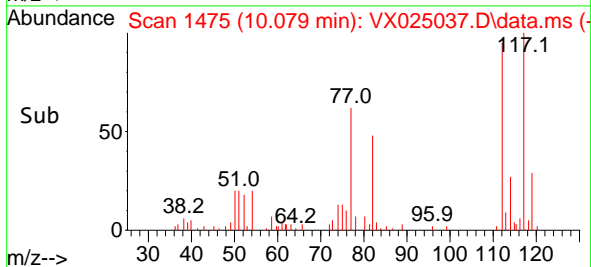
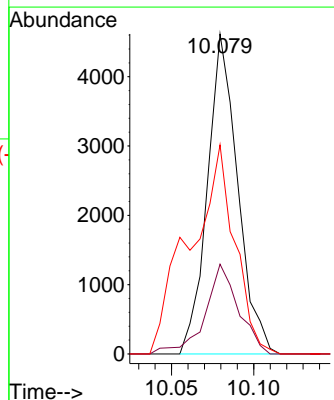
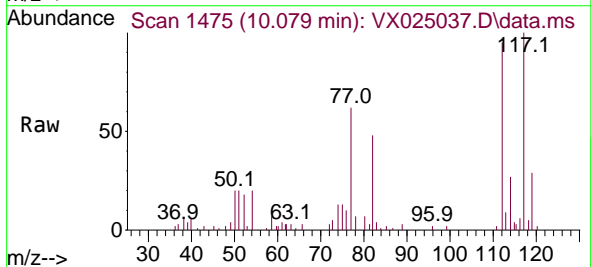


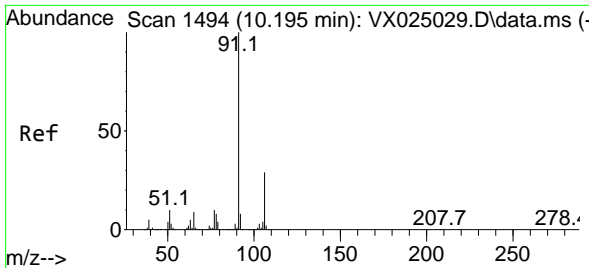
Tgt Ion:107 Resp: 2396
 Ion Ratio Lower Upper
 107 100
 109 94.7 63.8 118.6
 188 3.9 2.2 3.2#



#51
 Chlorobenzene
 Concen: 1.898 ug/L
 RT: 10.079 min Scan# 1475
 Delta R.T. 0.000 min
 Lab File: VX025037.D
 Acq: 01 Nov 2021 17:01

Tgt Ion:112 Resp: 5914
 Ion Ratio Lower Upper
 112 100
 114 28.0 22.7 42.3
 77 65.3 46.8 70.2

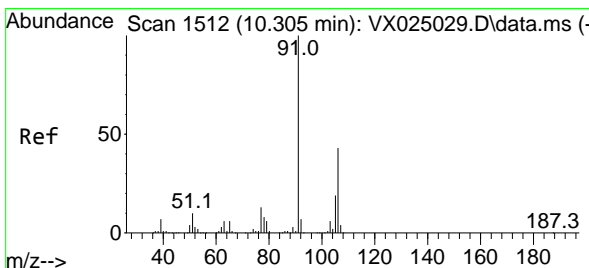
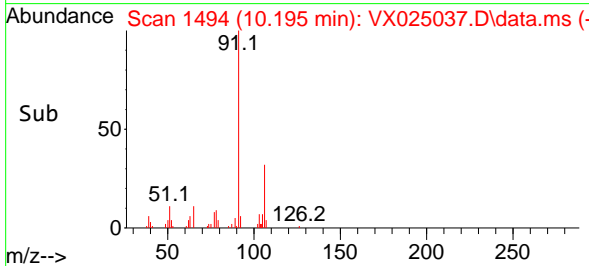
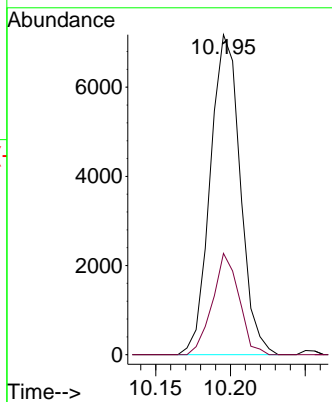
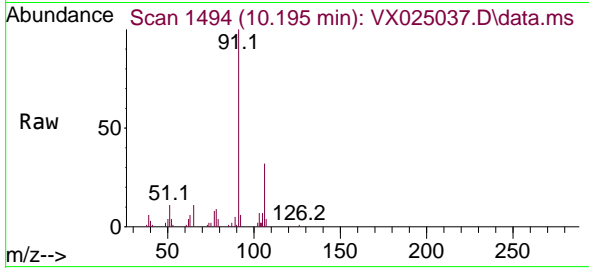




#52
 Ethylbenzene
 Concen: 1.662 ug/L
 RT: 10.195 min Scan# 1494
 Delta R.T. 0.000 min
 Lab File: VX025037.D
 Acq: 01 Nov 2021 17:01

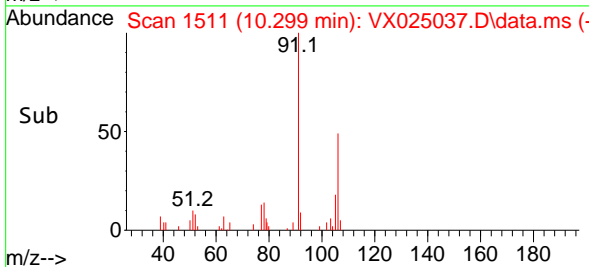
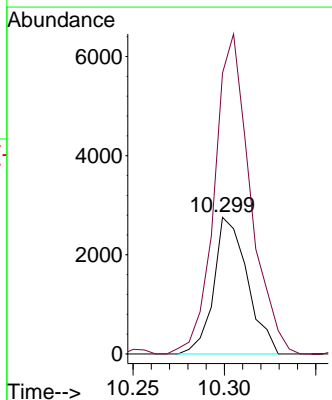
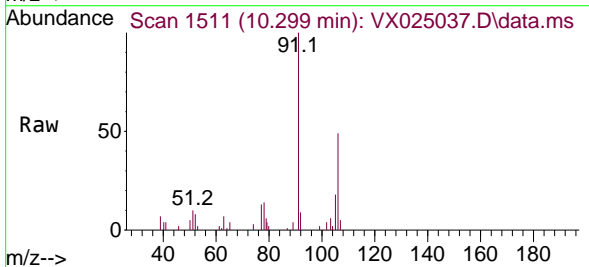
Instrument : MSVOA_X
 ClientSampleId :

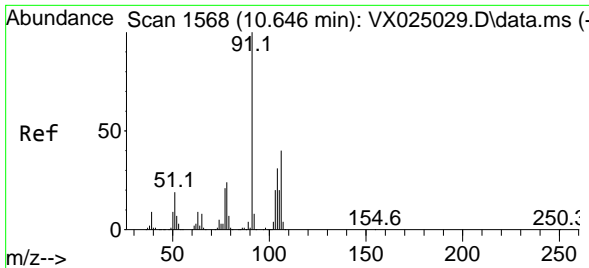
Tgt Ion: 91 Resp: 9995
 Ion Ratio Lower Upper
 91 100
 106 31.6 20.2 37.6



#53
 m,p-Xylene
 Concen: 1.707 ug/L
 RT: 10.299 min Scan# 1511
 Delta R.T. -0.006 min
 Lab File: VX025037.D
 Acq: 01 Nov 2021 17:01

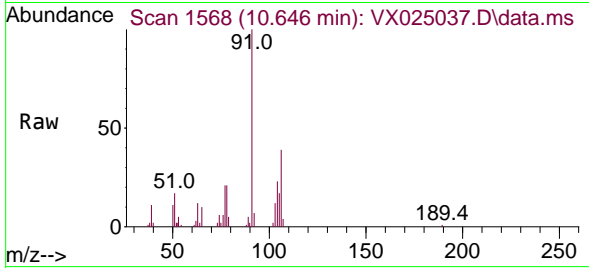
Tgt Ion:106 Resp: 3530
 Ion Ratio Lower Upper
 106 100
 91 205.7 160.2 297.6



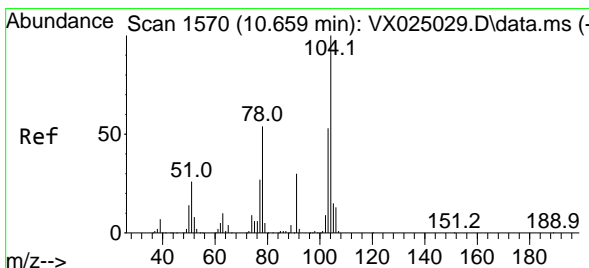
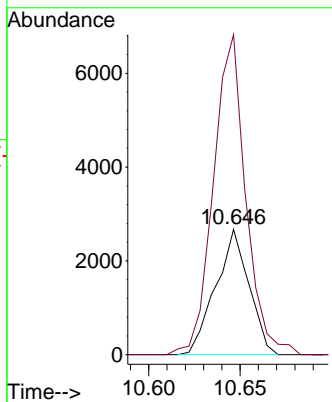
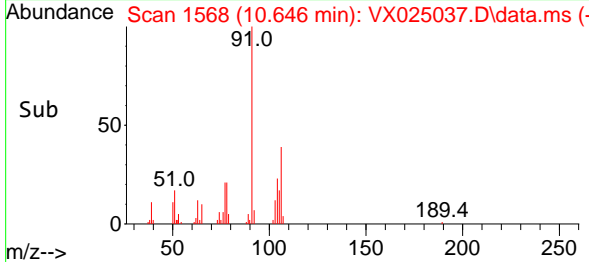


#54
 o-Xylene
 Concen: 1.677 ug/L
 RT: 10.646 min Scan# 1568
 Delta R.T. 0.000 min
 Lab File: VX025037.D
 Acq: 01 Nov 2021 17:01

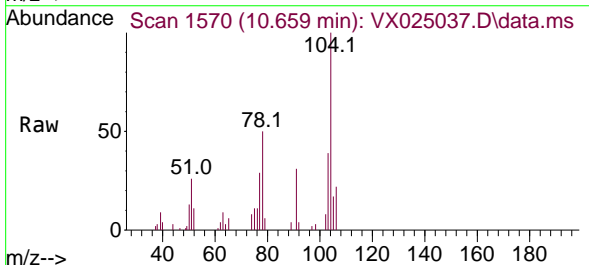
Instrument : MSVOA_X
 ClientSampleId :



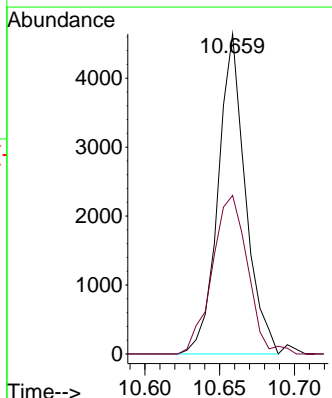
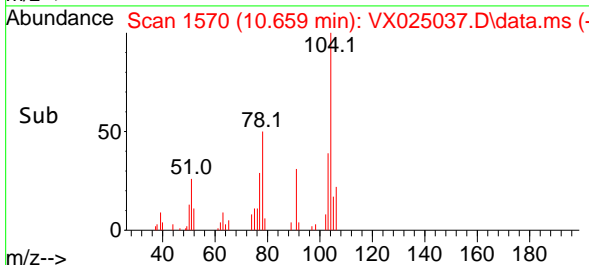
Tgt Ion:106 Resp: 3390
 Ion Ratio Lower Upper
 106 100
 91 255.4 164.4 305.4

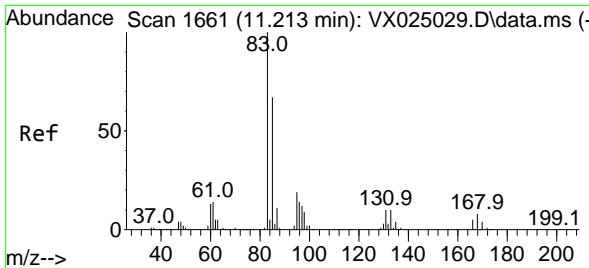


#55
 Styrene
 Concen: 1.726 ug/L
 RT: 10.659 min Scan# 1570
 Delta R.T. 0.000 min
 Lab File: VX025037.D
 Acq: 01 Nov 2021 17:01



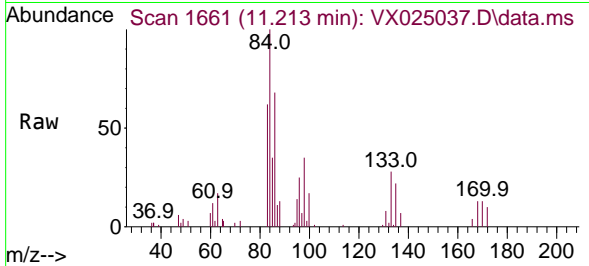
Tgt Ion:104 Resp: 5901
 Ion Ratio Lower Upper
 104 100
 78 49.6 38.2 71.0



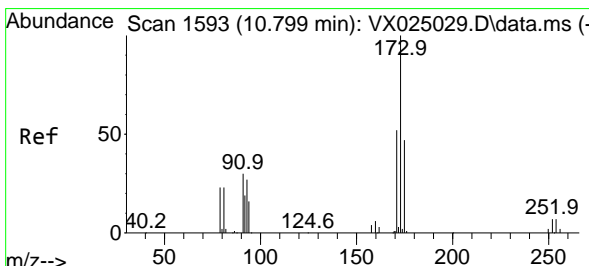
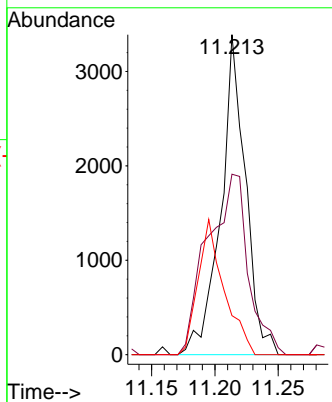
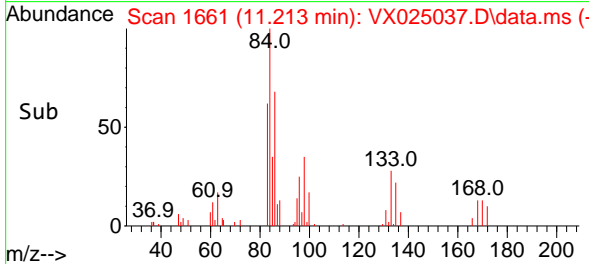


#57
 1,1,2,2-Tetrachloroethane
 Concen: 2.255 ug/L
 RT: 11.213 min Scan# 1661
 Delta R.T. 0.000 min
 Lab File: VX025037.D
 Acq: 01 Nov 2021 17:01

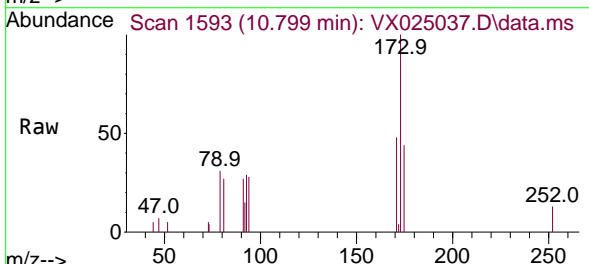
Instrument : MSVOA_X
 ClientSampleId :



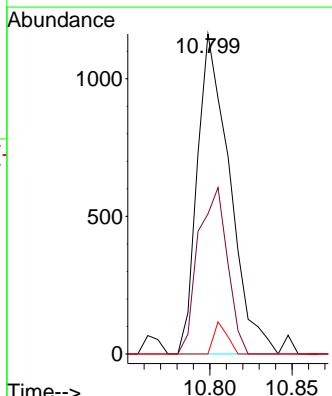
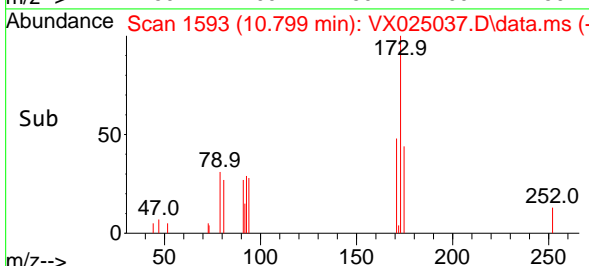
Tgt Ion: 83 Resp: 4603
 Ion Ratio Lower Upper
 83 100
 85 56.4 46.9 87.1
 131 12.2 8.7 13.1

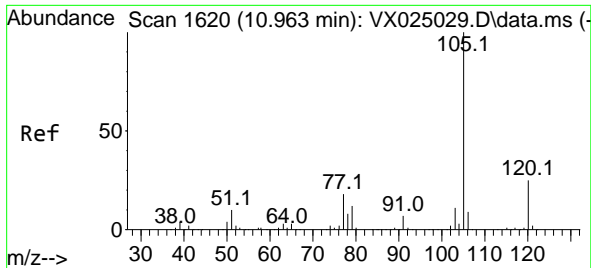


#59
 Bromoform
 Concen: 1.811 ug/L
 RT: 10.799 min Scan# 1593
 Delta R.T. 0.000 min
 Lab File: VX025037.D
 Acq: 01 Nov 2021 17:01



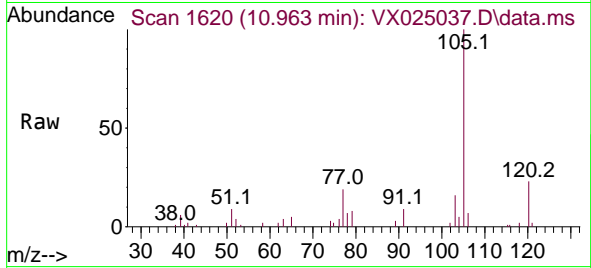
Tgt Ion: 173 Resp: 1588
 Ion Ratio Lower Upper
 173 100
 175 47.0 36.6 55.0
 254 4.1 4.9 7.3#





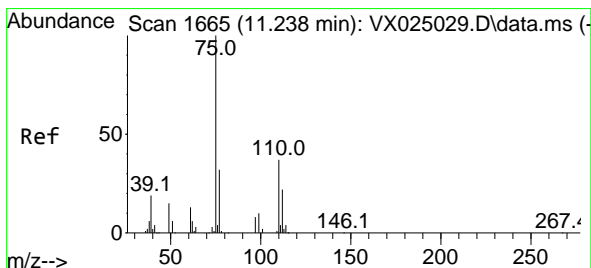
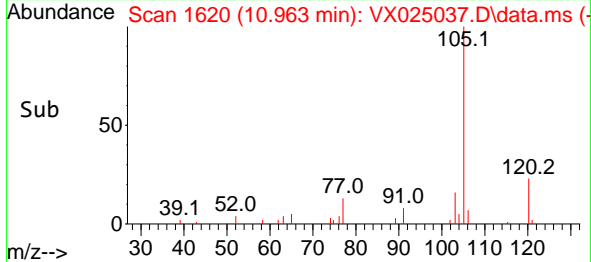
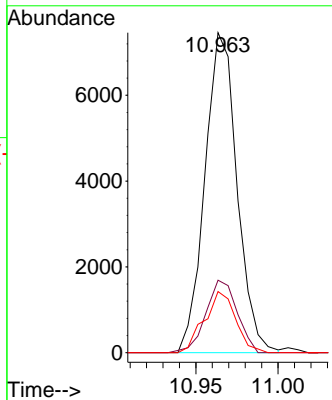
#60
 Isopropylbenzene
 Concen: 1.866 ug/L
 RT: 10.963 min Scan# 1620
 Delta R.T. 0.000 min
 Lab File: VX025037.D
 Acq: 01 Nov 2021 17:01

Instrument : MSVOA_X
 ClientSampleId :

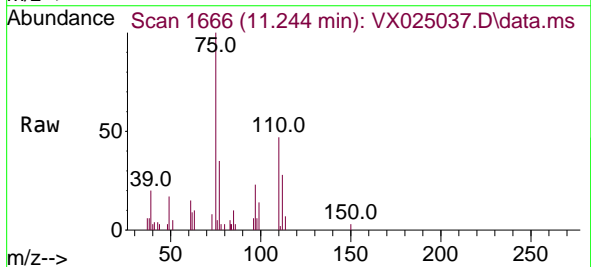


Tgt Ion: 105 Resp: 10124

Ion	Ratio	Lower	Upper
105	100		
120	22.0	19.8	29.6
77	18.6	13.2	19.8

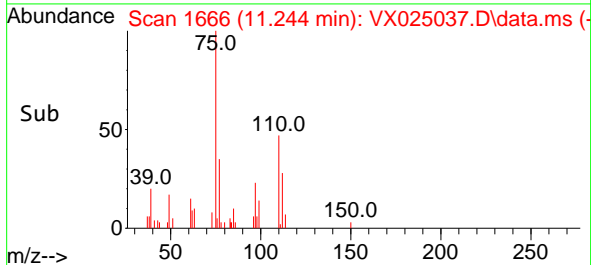
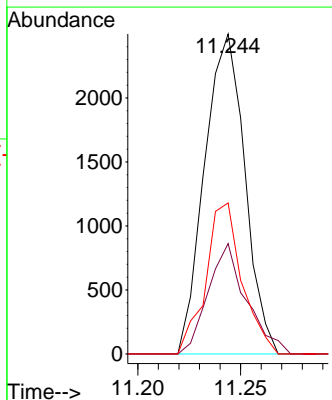


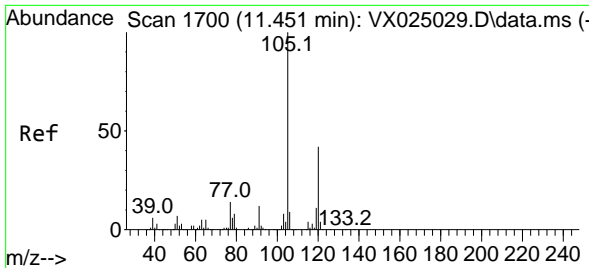
#61
 1,2,3-Trichloropropane
 Concen: 1.964 ug/L
 RT: 11.244 min Scan# 1666
 Delta R.T. 0.006 min
 Lab File: VX025037.D
 Acq: 01 Nov 2021 17:01



Tgt Ion: 75 Resp: 3405

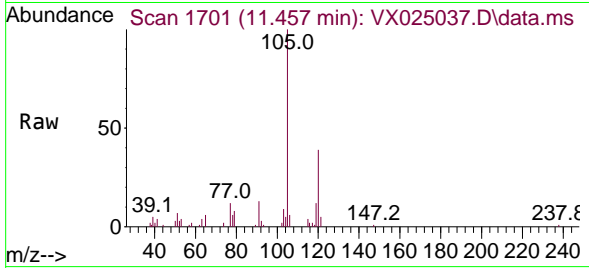
Ion	Ratio	Lower	Upper
75	100		
77	32.8	26.6	39.8
110	42.5	37.2	55.8



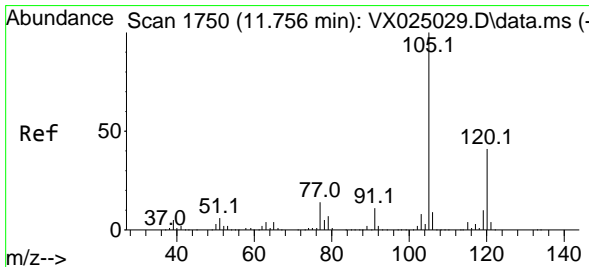
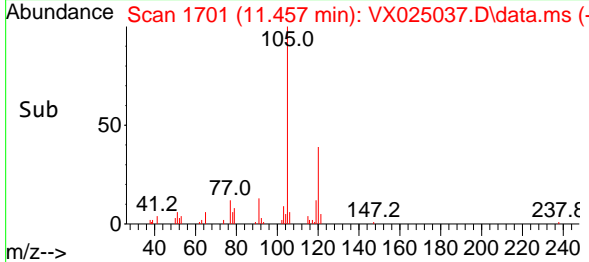
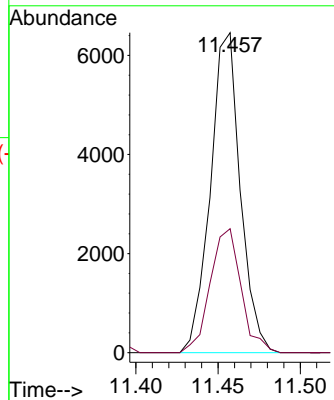


#62
 1,3,5-Trimethylbenzene
 Concen: 1.740 ug/L
 RT: 11.457 min Scan# 1701
 Delta R.T. 0.006 min
 Lab File: VX025037.D
 Acq: 01 Nov 2021 17:01

Instrument : MSVOA_X
 ClientSampleId :

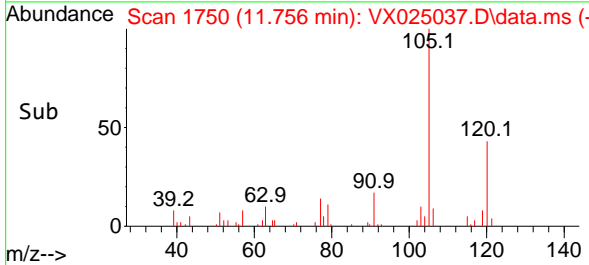
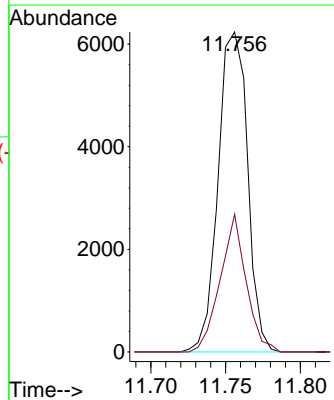
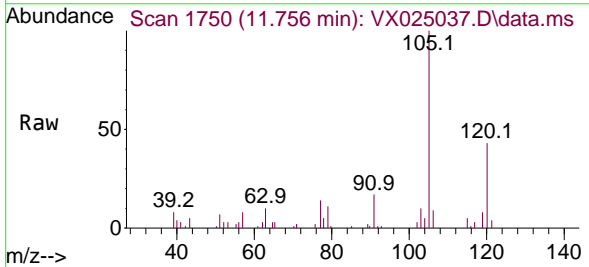


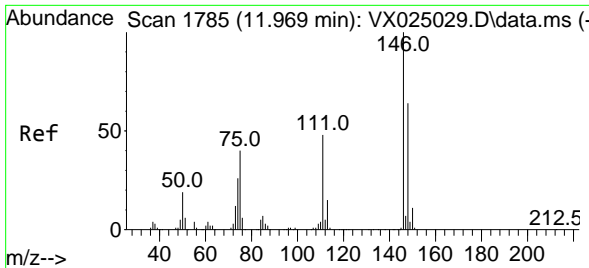
Tgt Ion:105 Resp: 8174
 Ion Ratio Lower Upper
 105 100
 120 39.9 34.4 51.6



#63
 1,2,4-Trimethylbenzene
 Concen: 1.812 ug/L
 RT: 11.756 min Scan# 1750
 Delta R.T. 0.000 min
 Lab File: VX025037.D
 Acq: 01 Nov 2021 17:01

Tgt Ion:105 Resp: 8536
 Ion Ratio Lower Upper
 105 100
 120 37.9 31.0 46.6

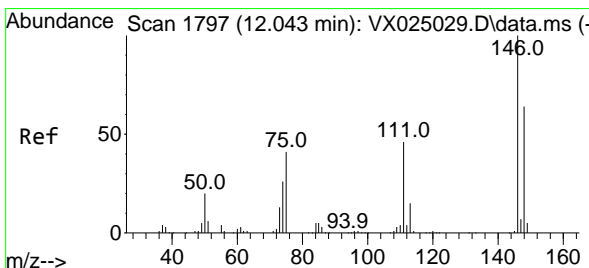
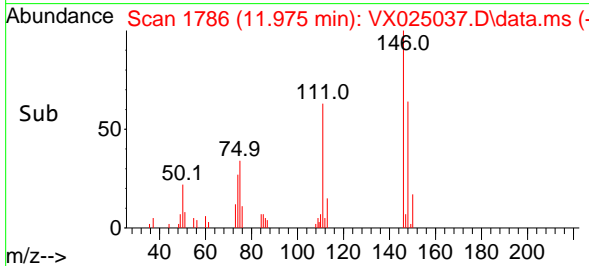
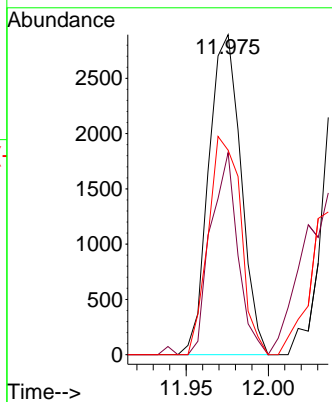
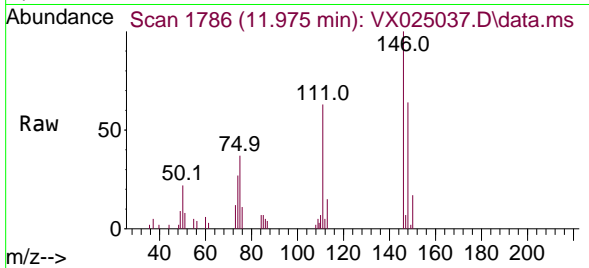




#64
 1,3-Dichlorobenzene
 Concen: 1.870 ug/L
 RT: 11.975 min Scan# 11
 Delta R.T. 0.006 min
 Lab File: VX025037.D
 Acq: 01 Nov 2021 17:01

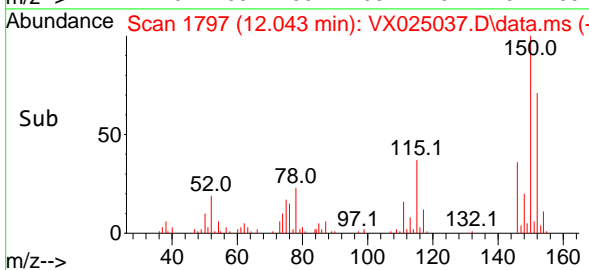
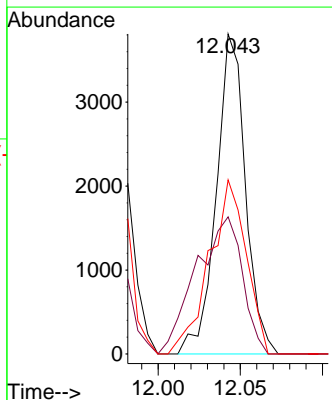
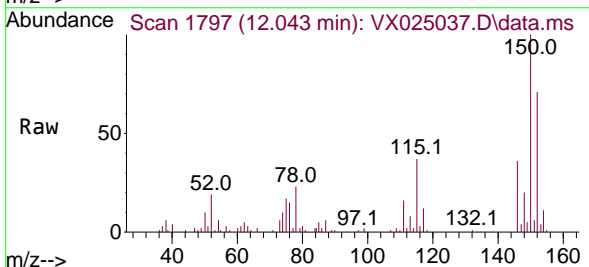
Instrument :
 MSVOA_X
 ClientSampleId :

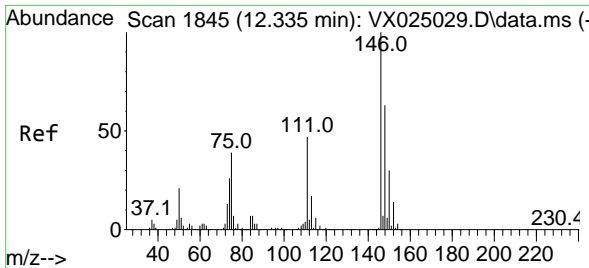
Tgt Ion	Resp	Lower	Upper
146	3949		
111	63.1	31.1	57.9#
148	63.9	43.2	80.2



#65
 1,4-Dichlorobenzene
 Concen: 2.151 ug/L
 RT: 12.043 min Scan# 1797
 Delta R.T. 0.000 min
 Lab File: VX025037.D
 Acq: 01 Nov 2021 17:01

Tgt Ion	Resp	Lower	Upper
146	4698		
111	42.9	31.8	59.0
148	54.4	46.1	85.5



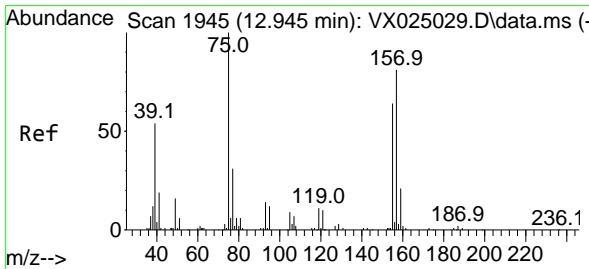
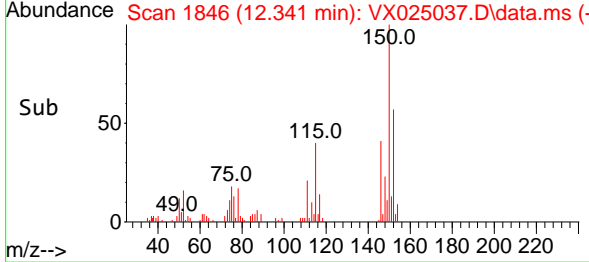
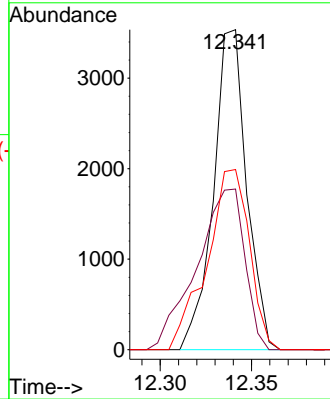
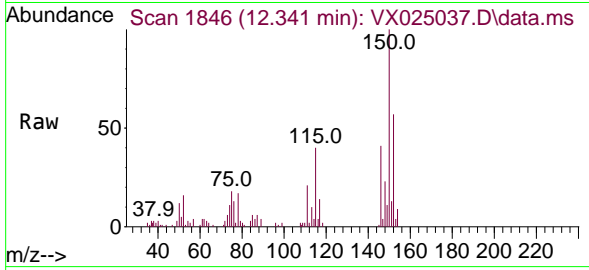


#67
 1,2-Dichlorobenzene
 Concen: 2.078 ug/L
 RT: 12.341 min Scan# 1846
 Delta R.T. 0.006 min
 Lab File: VX025037.D
 Acq: 01 Nov 2021 17:01

Instrument : MSVOA_X
 ClientSampleId :

Tgt Ion:146 Resp: 4483

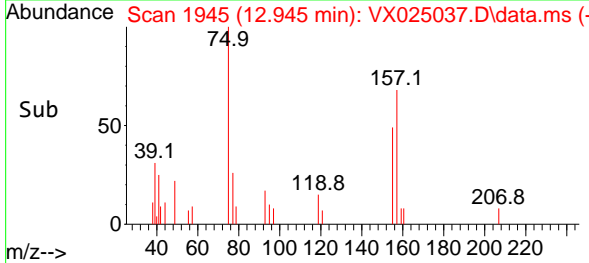
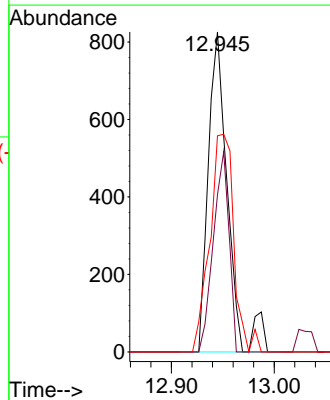
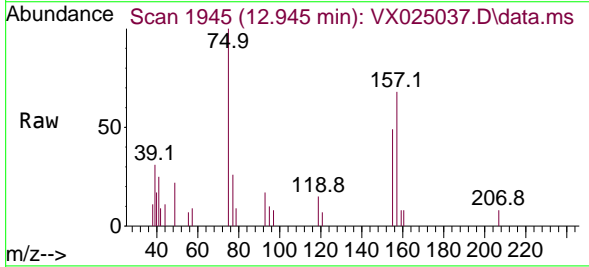
Ion	Ratio	Lower	Upper
146	100		
111	50.2	38.5	57.7
148	56.3	53.2	79.8

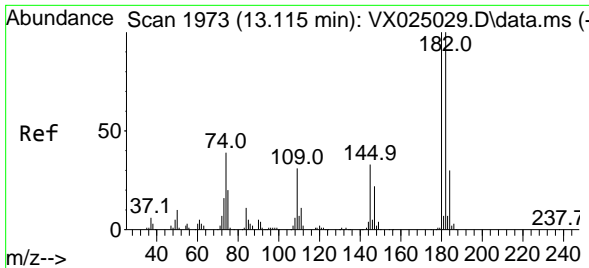


#68
 1,2-Dibromo-3-chloropropane
 Concen: 1.921 ug/L
 RT: 12.945 min Scan# 1945
 Delta R.T. 0.000 min
 Lab File: VX025037.D
 Acq: 01 Nov 2021 17:01

Tgt Ion: 75 Resp: 1086

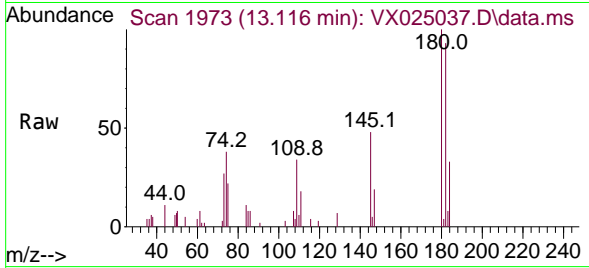
Ion	Ratio	Lower	Upper
75	100		
155	49.2	59.3	88.9#
157	67.6	68.7	103.1#





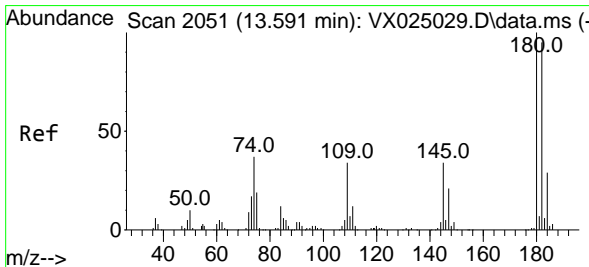
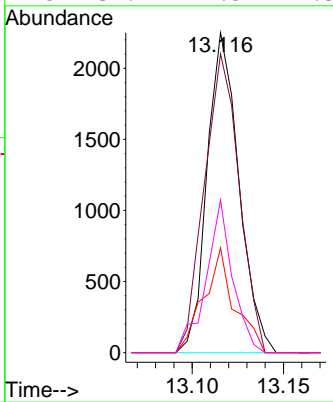
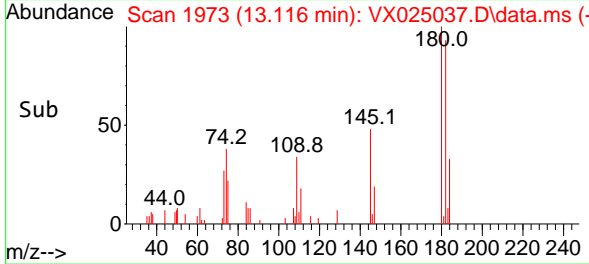
#69
 1,3,5-Trichlorobenzene
 Concen: 1.801 ug/L
 RT: 13.116 min Scan# 1973
 Delta R.T. 0.000 min
 Lab File: VX025037.D
 Acq: 01 Nov 2021 17:01

Instrument : MSVOA_X
 ClientSampleId :

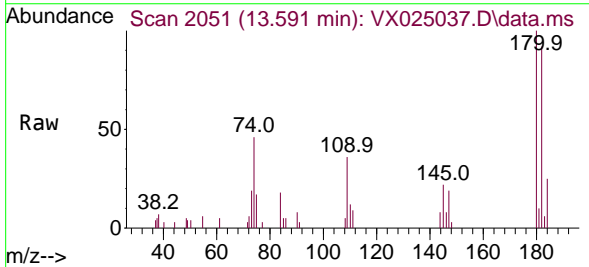


Tgt Ion:180 Resp: 2731

Ion	Ratio	Lower	Upper
180	100		
182	101.7	74.2	111.4
184	31.6	23.7	35.5
145	39.7	27.5	41.3

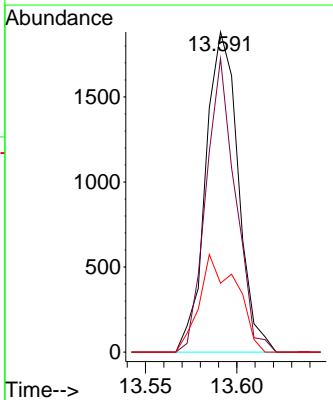
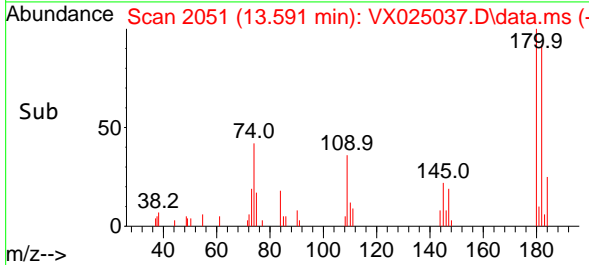


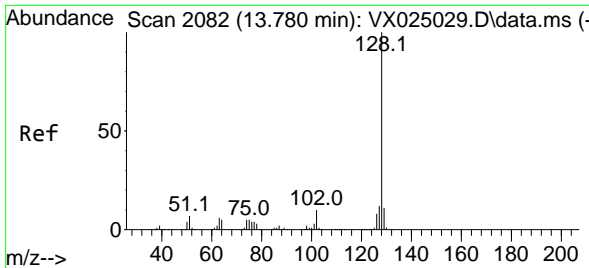
#70
 1,2,4-trichlorobenzene
 Concen: 1.816 ug/L
 RT: 13.591 min Scan# 2051
 Delta R.T. 0.000 min
 Lab File: VX025037.D
 Acq: 01 Nov 2021 17:01



Tgt Ion:180 Resp: 2335

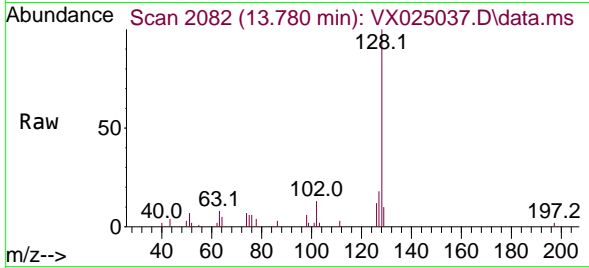
Ion	Ratio	Lower	Upper
180	100		
182	82.7	76.4	114.6
145	34.6	28.8	43.2



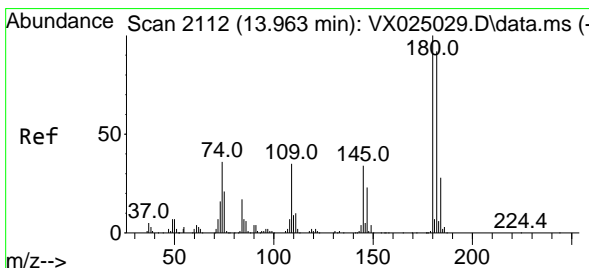
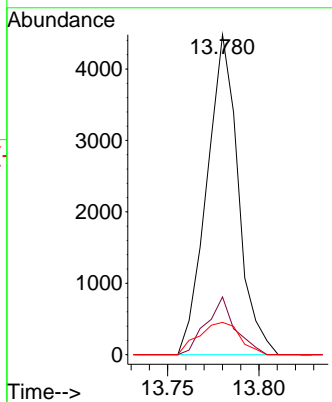
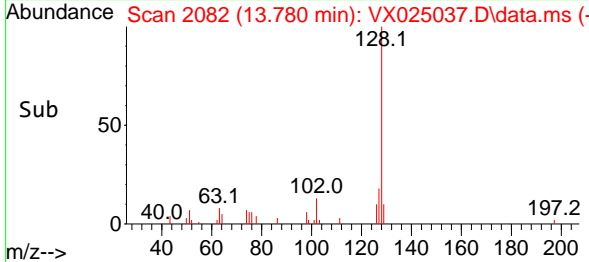


#71
 Naphthalene
 Concen: 1.205 ug/L
 RT: 13.780 min Scan# 2082
 Delta R.T. 0.000 min
 Lab File: VX025037.D
 Acq: 01 Nov 2021 17:01

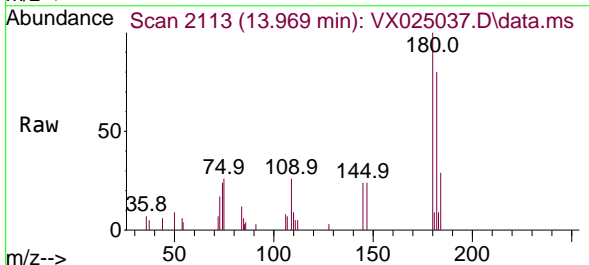
Instrument : MSVOA_X
 ClientSampleId :



Tgt Ion:128 Resp: 5356
 Ion Ratio Lower Upper
 128 100
 127 16.6 10.6 15.8#
 129 13.3 9.1 13.7



#72
 1,2,3-Trichlorobenzene
 Concen: 1.676 ug/L
 RT: 13.969 min Scan# 2113
 Delta R.T. 0.006 min
 Lab File: VX025037.D
 Acq: 01 Nov 2021 17:01



Tgt Ion:180 Resp: 2215
 Ion Ratio Lower Upper
 180 100
 182 91.8 73.3 109.9
 145 32.3 29.0 43.4

