

Data Path : Z:\VOASRV\HPCHEM1\MSVOA X\DATA\VX110218\  
 Data File : VX005753.D  
 Acq On : 02 Nov 2018 13:48  
 Operator : JC/MD  
 Sample : PB114401ZHE#04  
 Misc : 5.0mL/MSVOA X/WATER  
 ALS Vial : 11 Sample Multiplier: 1

Instrument :  
 MSVOA\_X  
 ClientSampleId :  
 PB114401ZHE#04

Quant Time: Nov 03 01:25:04 2018  
 Quant Method : Z:\VOASRV\HPCHEM1\MSVOA\_X\METHOD\82X103118W.M  
 Quant Title : SW846 8260  
 QLast Update : Wed Oct 31 18:23:06 2018  
 Response via : Initial Calibration

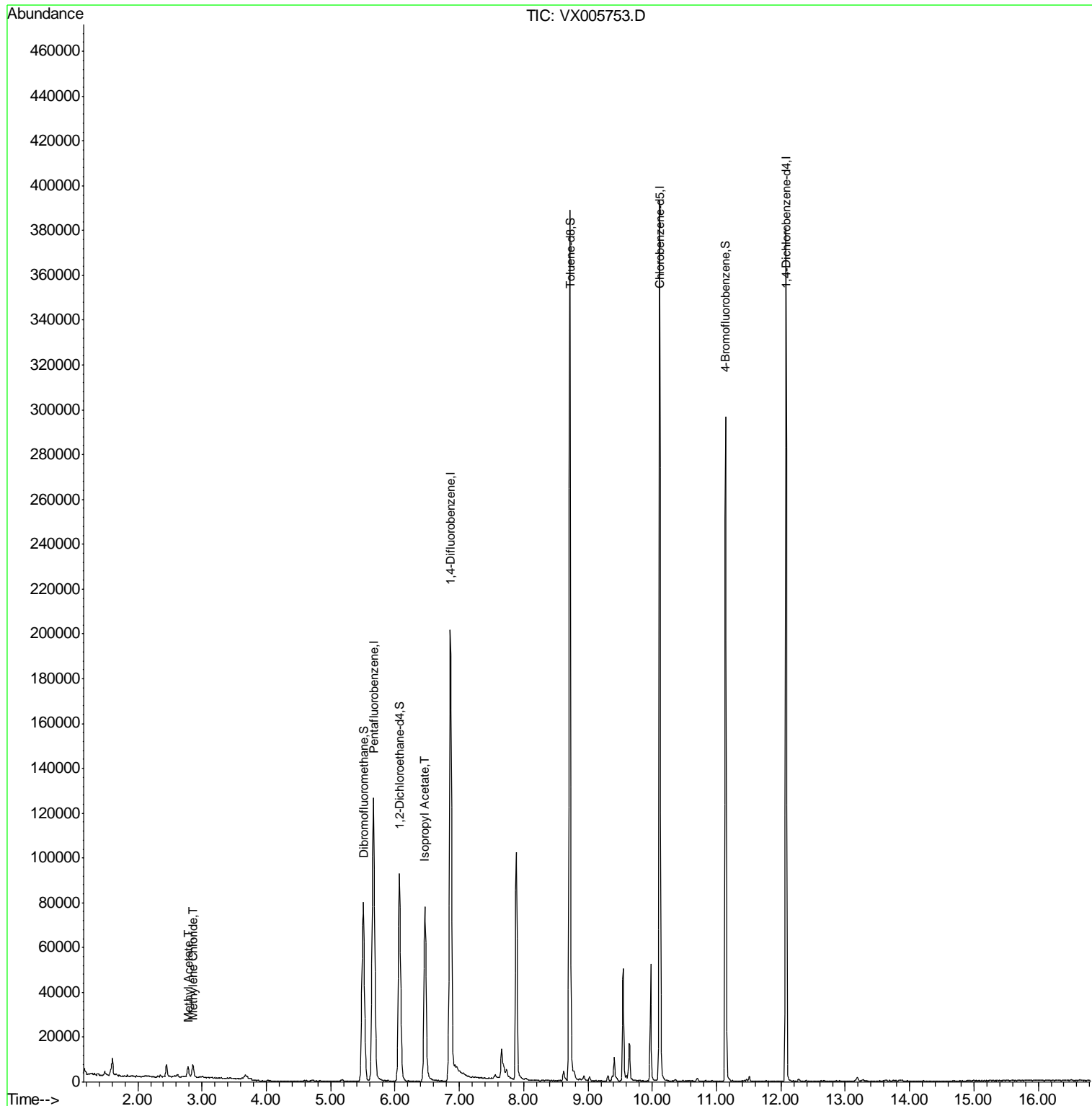
Internal Standards	R.T.	QIon	Response	Conc	Units	Dev(Min)
1) Pentafluorobenzene	5.67	168	113479	50.00	ug/l	0.00
34) 1,4-Difluorobenzene	6.86	114	195863	50.00	ug/l	0.00
63) Chlorobenzene-d5	10.12	117	170473	50.00	ug/l	0.00
72) 1,4-Dichlorobenzene-d4	12.08	152	71609	50.00	ug/l	0.00
System Monitoring Compounds						
33) 1,2-Dichloroethane-d4	6.07	65	90033	54.27	ug/l	0.00
Spiked Amount	50.000		Recovery	=	108.54%	
35) Dibromofluoromethane	5.51	113	66998	49.40	ug/l	0.00
Spiked Amount	50.000		Recovery	=	98.80%	
50) Toluene-d8	8.72	98	235882	49.59	ug/l	0.00
Spiked Amount	50.000		Recovery	=	99.18%	
62) 4-Bromofluorobenzene	11.14	95	73903	42.10	ug/l	0.00
Spiked Amount	50.000		Recovery	=	84.20%	
Target Compounds						
18) Methyl Acetate	2.78	43	6256	2.627	ug/l	92
20) Methylene Chloride	2.85	84	2393	1.673	ug/l	97
43) Isopropyl Acetate	6.46	43	99929	25.861	ug/l	98

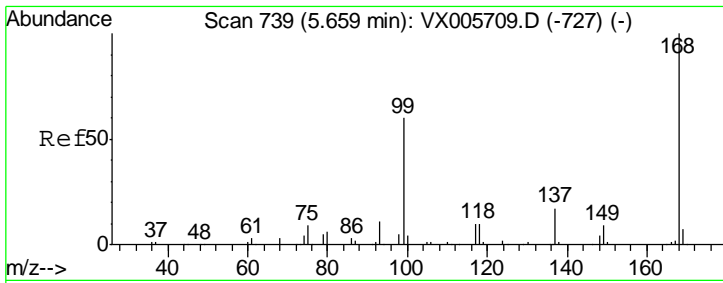
(#) = qualifier out of range (m) = manual integration (+) = signals summed

Data Path : Z:\VOASRV\HPCHEM1\MSVOA X\DATA\VX110218\  
 Data File : VX005753.D  
 Acq On : 02 Nov 2018 13:48  
 Operator : JC/MD  
 Sample : PB114401ZHE#04  
 Misc : 5.0mL/MSVOA X/WATER  
 ALS Vial : 11 Sample Multiplier: 1

Instrument :  
 MSVOA\_X  
 ClientSampleId :  
 PB114401ZHE#04

Quant Time: Nov 03 01:25:04 2018  
 Quant Method : Z:\VOASRV\HPCHEM1\MSVOA\_X\METHOD\82X103118W.M  
 Quant Title : SW846 8260  
 QLast Update : Wed Oct 31 18:23:06 2018  
 Response via : Initial Calibration

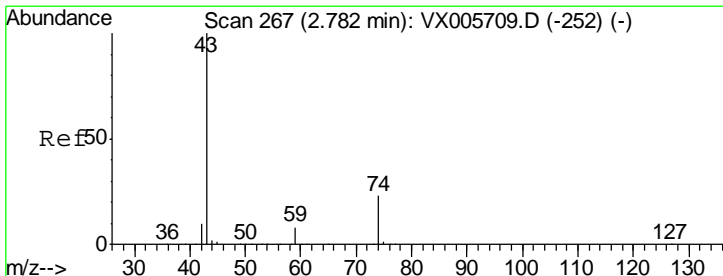
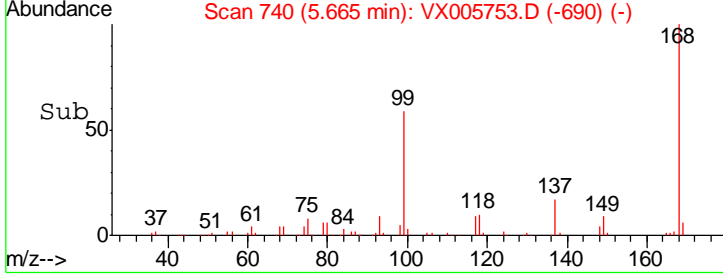
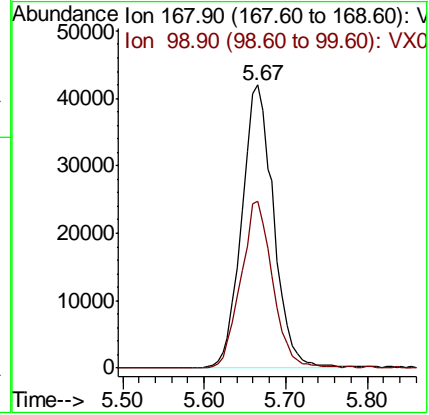
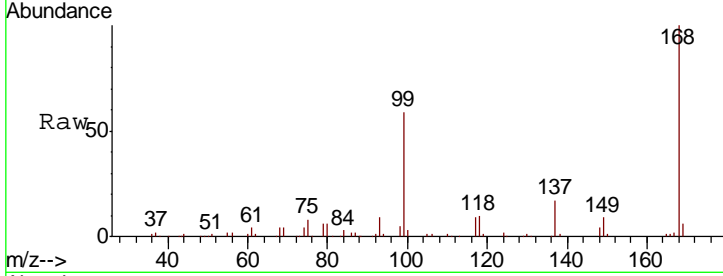




#1  
 Pentafluorobenzene  
 Concen: 50.000 ug/l  
 RT: 5.67 min Scan# 740  
 Delta R.T. 0.01 min  
 Lab File: VX005753.D  
 Acq: 02 Nov 2018 13:48

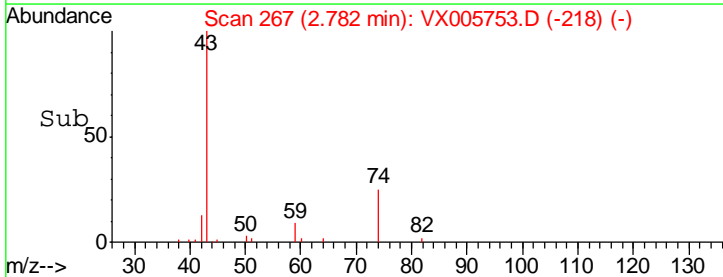
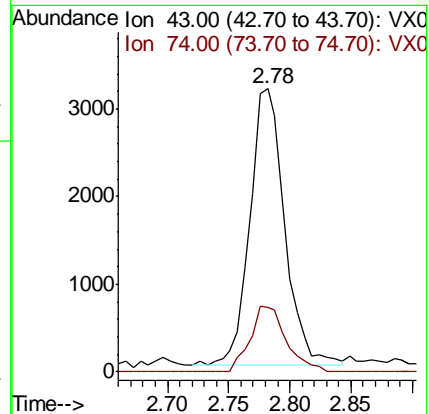
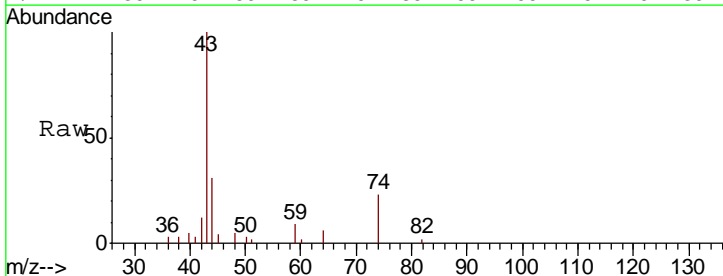
Instrument : MSVOA\_X  
 ClientSampleID : PB114401ZHE#04

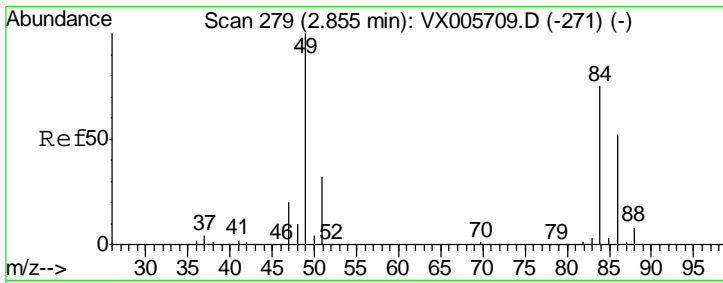
Tot Ion: 168 Resp: 113479  
 Ion Ratio Lower Upper  
 168 100  
 99 59.0 40.7 61.1



#18  
 Methyl Acetate  
 Concen: 2.627 ug/l  
 RT: 2.78 min Scan# 267  
 Delta R.T. -0.00 min  
 Lab File: VX005753.D  
 Acq: 02 Nov 2018 13:48

Tgt Ion: 43 Resp: 6256  
 Ion Ratio Lower Upper  
 43 100  
 74 24.6 16.8 25.2

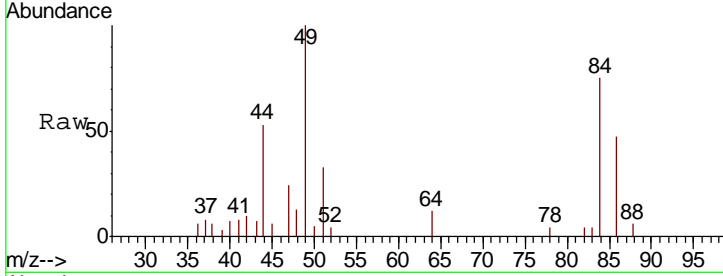




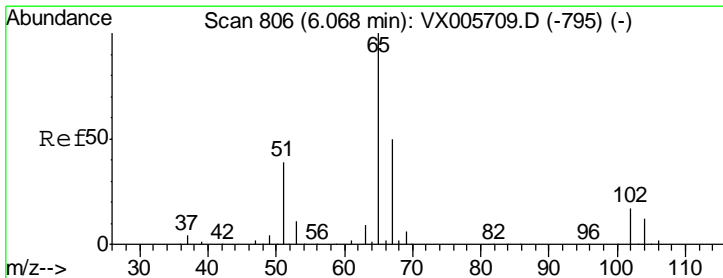
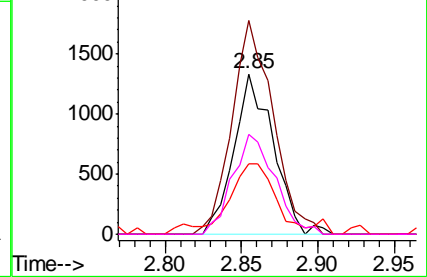
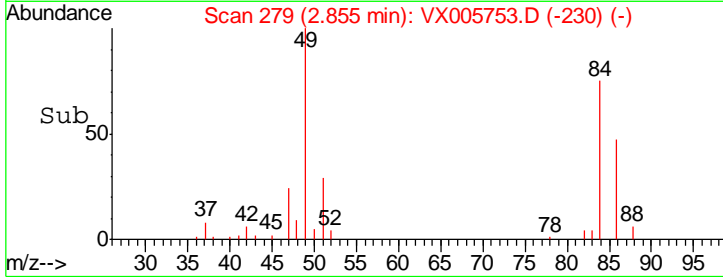
#20  
 Methylene Chloride  
 Concen: 1.673 ug/l  
 RT: 2.85 min Scan# 279  
 Delta R.T. -0.00 min  
 Lab File: VX005753.D  
 Acq: 02 Nov 2018 13:48

Instrument : MSVOA\_X  
 ClientSampleID : PB114401ZHE#04

Tgt Ion	Resp	Lower	Upper
84	100		
49	133.4	109.5	164.3
51	43.6	33.3	49.9
86	62.7	52.7	79.1

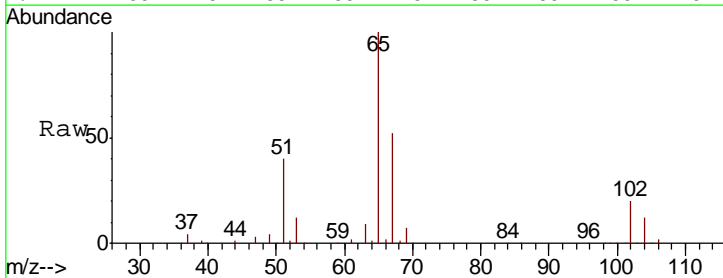


Abundance Ion 83.90 (83.60 to 84.60): VX0  
 Ion 48.90 (48.60 to 49.60): VX0  
 Ion 50.90 (50.60 to 51.60): VX0  
 Ion 85.90 (85.60 to 86.60): VX0

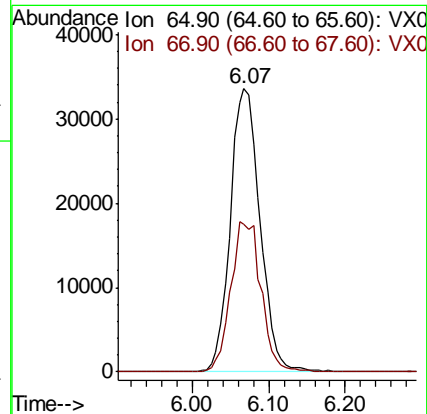
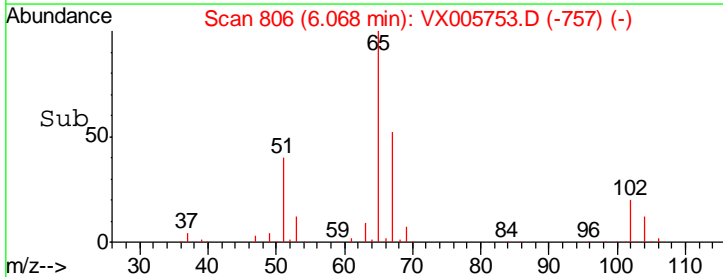


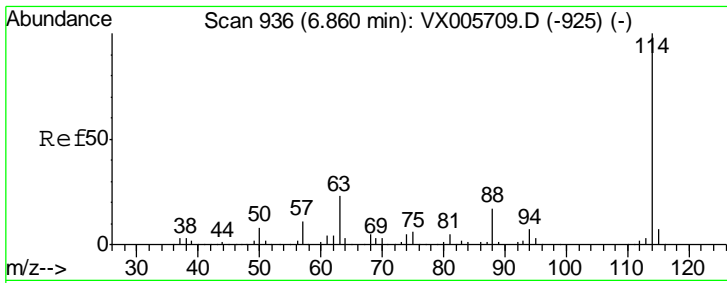
#33  
 1,2-Dichloroethane-d4  
 Concen: 54.267 ug/l  
 RT: 6.07 min Scan# 806  
 Delta R.T. 0.00 min  
 Lab File: VX005753.D  
 Acq: 02 Nov 2018 13:48

Tgt Ion	Resp	Lower	Upper
65	100		
67	54.2	0.0	105.0



Abundance Ion 64.90 (64.60 to 65.60): VX0  
 Ion 66.90 (66.60 to 67.60): VX0

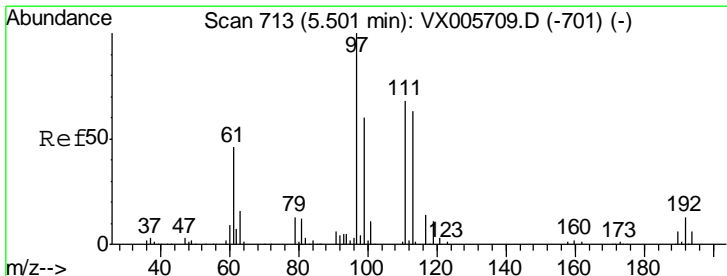
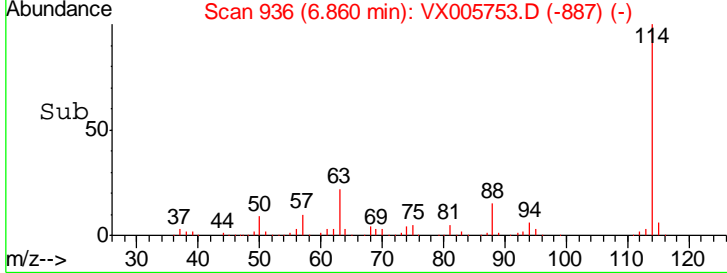
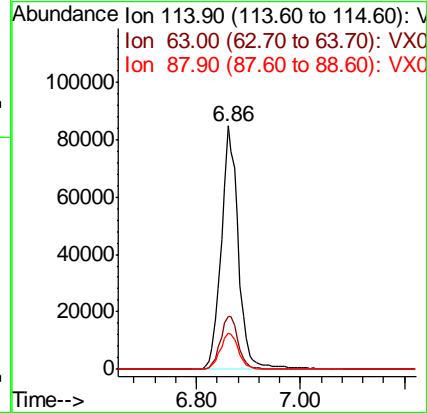
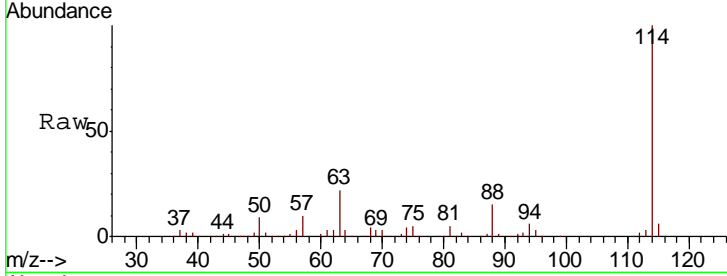




#34  
 1,4-Difluorobenzene  
 Concen: 50.000 ug/l  
 RT: 6.86 min Scan# 936  
 Delta R.T. -0.00 min  
 Lab File: VX005753.D  
 Acq: 02 Nov 2018 13:48

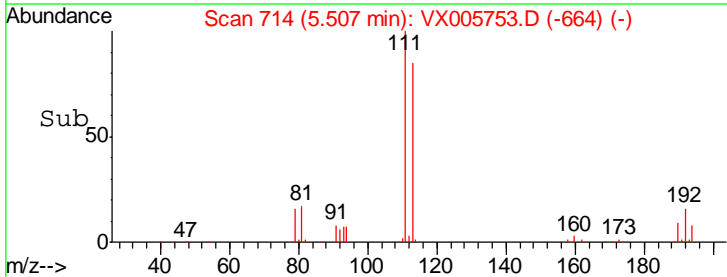
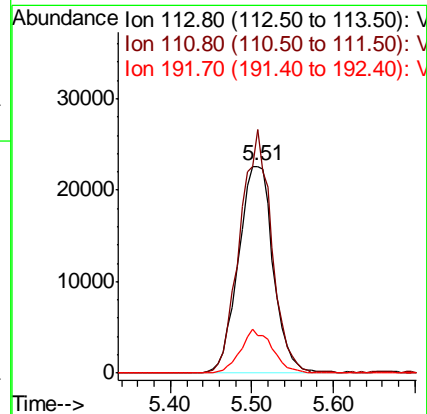
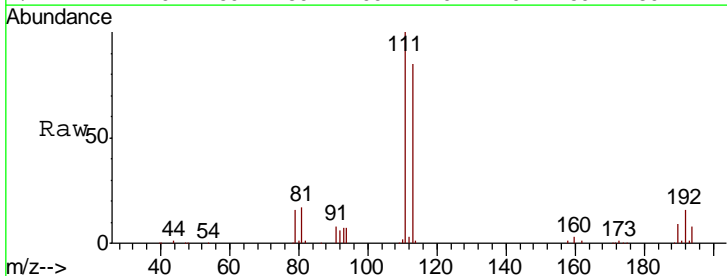
Instrument :  
 MSVOA\_X  
 ClientSampleId :  
 PB114401ZHE#04

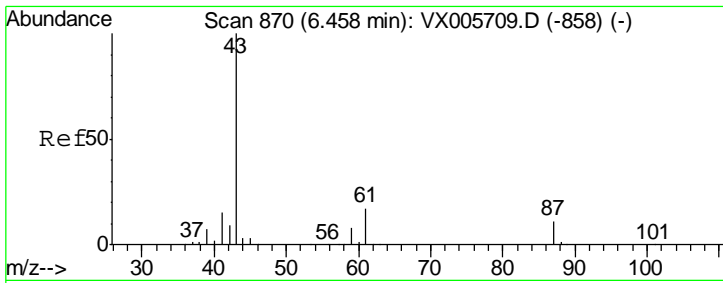
Tgt Ion	Resp	Lower	Upper
114	195863		
63	21.6	0.0	42.8
88	14.9	0.0	31.2



#35  
 Dibromofluoromethane  
 Concen: 49.402 ug/l  
 RT: 5.51 min Scan# 714  
 Delta R.T. 0.01 min  
 Lab File: VX005753.D  
 Acq: 02 Nov 2018 13:48

Tgt Ion	Resp	Lower	Upper
113	66998		
111	106.7	82.3	123.5
192	19.2	17.9	26.9

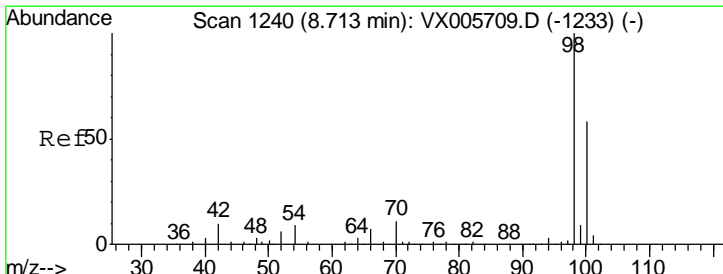
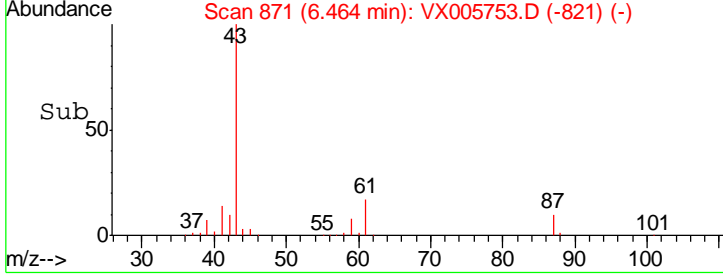
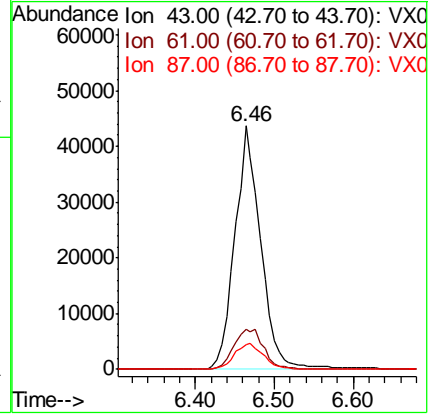
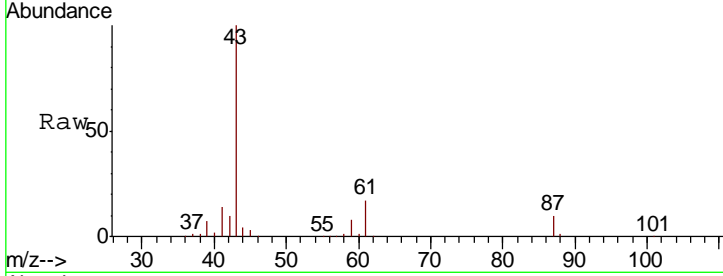




#43  
 Isopropyl Acetate  
 Concen: 25.861 ug/l  
 RT: 6.46 min Scan# 871  
 Delta R.T. 0.01 min  
 Lab File: VX005753.D  
 Acq: 02 Nov 2018 13:48

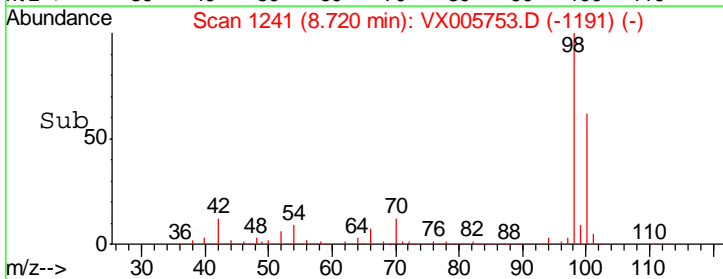
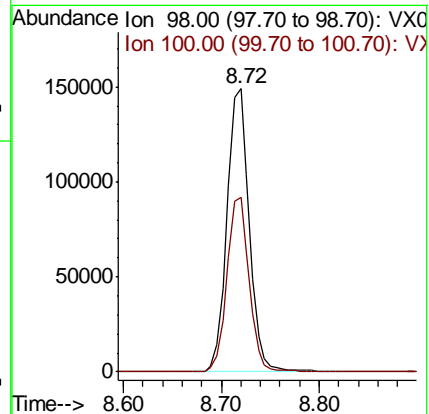
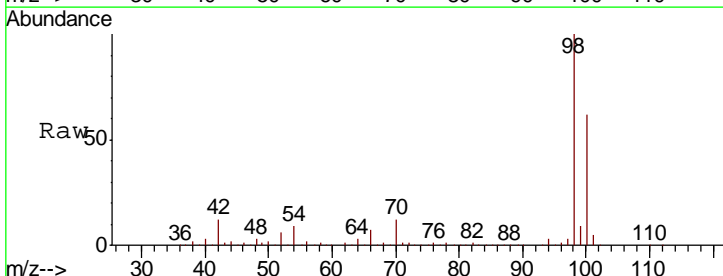
Instrument : MSVOA\_X  
 ClientSampleId : PB114401ZHE#04

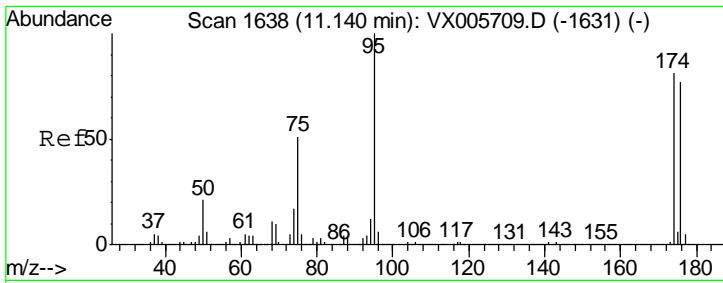
Tgt Ion	Resp	Lower	Upper
43	100		
61	19.5	14.6	22.0
87	11.8	9.6	14.4



#50  
 Toluene-d8  
 Concen: 49.591 ug/l  
 RT: 8.72 min Scan# 1241  
 Delta R.T. 0.01 min  
 Lab File: VX005753.D  
 Acq: 02 Nov 2018 13:48

Tgt Ion	Resp	Lower	Upper
98	100		
100	61.7	51.3	76.9

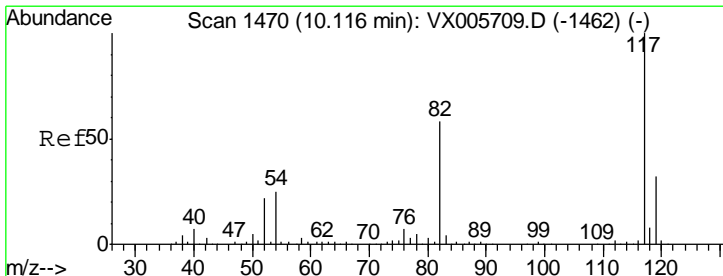
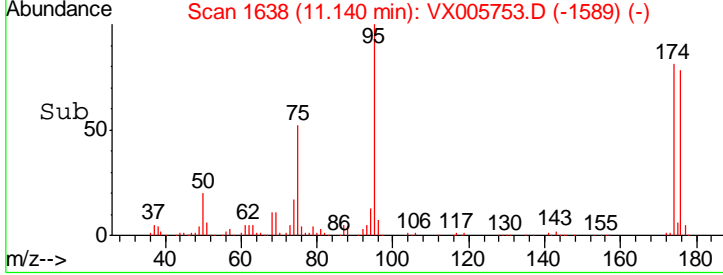
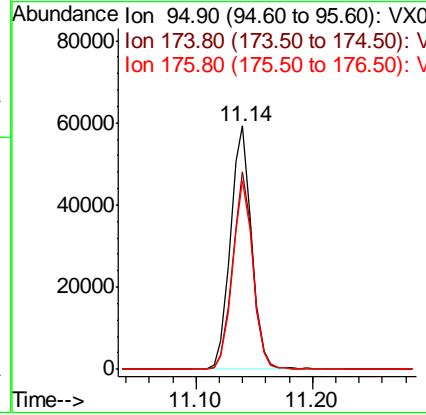
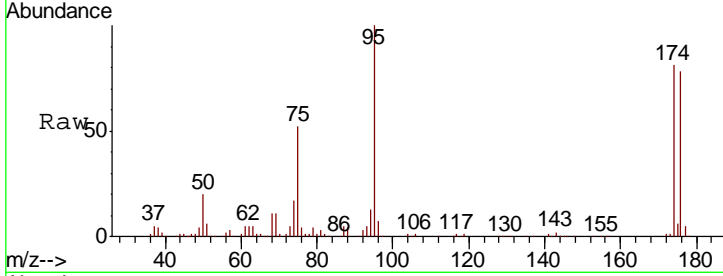




#62  
 4-Bromofluorobenzene  
 Concen: 42.098 ug/l  
 RT: 11.14 min Scan# 1638  
 Delta R.T. -0.00 min  
 Lab File: VX005753.D  
 Acq: 02 Nov 2018 13:48

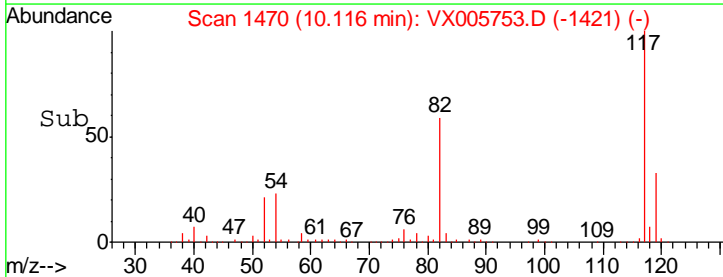
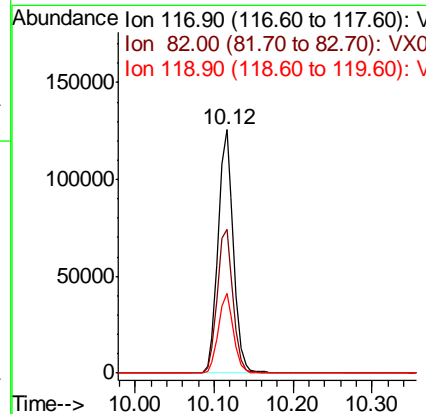
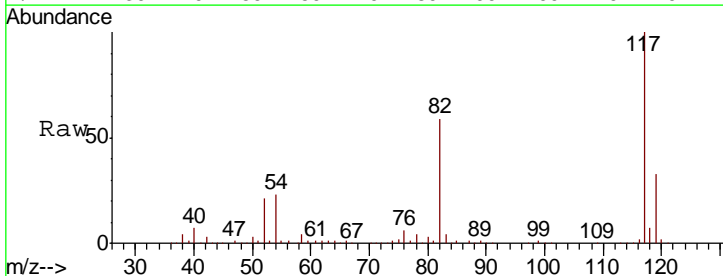
Instrument : MSVOA\_X  
 ClientSampled : PB114401ZHE#04

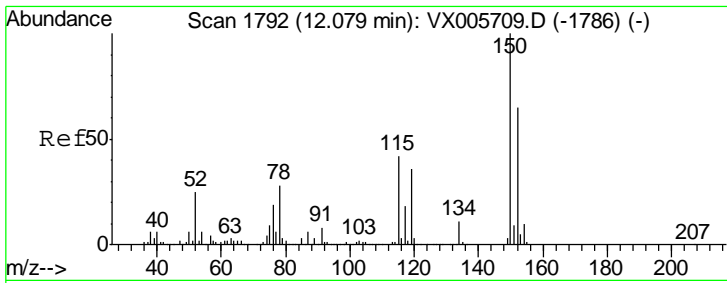
Tgt Ion	Resp	Lower	Upper
95	73903		
174	78.8	0.0	184.4
176	75.6	0.0	177.4



#63  
 Chlorobenzene-d5  
 Concen: 50.000 ug/l  
 RT: 10.12 min Scan# 1470  
 Delta R.T. 0.00 min  
 Lab File: VX005753.D  
 Acq: 02 Nov 2018 13:48

Tgt Ion	Resp	Lower	Upper
117	170473		
82	59.0	44.1	66.1
119	32.7	26.2	39.2





#72  
 1,4-Dichlorobenzene-d4  
 Concen: 50.000 ug/l  
 RT: 12.08 min Scan# 1792  
 Delta R.T. 0.00 min  
 Lab File: VX005753.D  
 Acq: 02 Nov 2018 13:48

Instrument : MSVOA\_X  
 ClientSampled : PB114401ZHE#04

Tot Ion:152 Resp: 71609

Ion	Ratio	Lower	Upper
152	100		
115	59.6	39.4	118.1
150	157.8	0.0	346.4

