

Data Path : Z:\VOASRV\HPCHEM1\MSVOA X\DATA\VX110320\  
 Data File : VX019230.D  
 Acq On : 03 Nov 2020 13:24  
 Operator : JC/MD  
 Sample : L4485-17  
 Misc : 5.0µ/5mL/100uL/5.00mL/MSVOA\_X/MEOH  
 ALS Vial : 12 Sample Multiplier: 1

Instrument :  
 MSVOA\_X  
 ClientSampled :

Quant Time: Nov 04 01:23:57 2020  
 Quant Method : Z:\VOASRV\HPCHEM1\MSVOA\_X\METHOD\SFAMXLM110220WMA.M  
 Quant Title : VOC Analysis  
 QLast Update : Wed Nov 04 01:20:42 2020  
 Response via : Initial Calibration

Internal Standards	R.T.	QIon	Response	Conc	Units	Dev(Min)
1) 1,4-Difluorobenzene	6.83	114	429062	50.00	µg/L	0.00
28) Chlorobenzene-d5	10.10	117	394123	50.00	µg/L	0.00
58) 1,4-Dichlorobenzene-d4	12.06	152	180788	50.00	µg/L	0.00

## System Monitoring Compounds

4) Vinyl Chloride-d3	1.39	65	161206	43.64	µg/L	0.00
Spiked Amount	50.000	Range	60 - 135	Recovery	=	87.28%
7) Chloroethane-d5	1.70	69	130938	47.74	µg/L	0.00
Spiked Amount	50.000	Range	70 - 130	Recovery	=	95.48%
11) 1,1-Dichloroethene-d2	2.34	63	217270	35.65	µg/L	0.00
Spiked Amount	50.000	Range	60 - 125	Recovery	=	71.30%
21) 2-Butanone-d5	4.53	46	210309	111.60	µg/L	0.00
Spiked Amount	100.000	Range	40 - 130	Recovery	=	111.60%
24) Chloroform-d	5.14	84	274322	45.60	µg/L	0.00
Spiked Amount	50.000	Range	70 - 125	Recovery	=	91.20%
26) 1,2-Dichloroethane-d4	6.03	65	193987	45.39	µg/L	0.00
Spiked Amount	50.000	Range	70 - 125	Recovery	=	90.78%
32) Benzene-d6	6.05	84	582618	47.62	µg/L	0.00
Spiked Amount	50.000	Range	70 - 125	Recovery	=	95.24%
36) 1,2-Dichloropropane-d6	7.37	67	177119	49.03	µg/L	0.00
Spiked Amount	50.000	Range	70 - 120	Recovery	=	98.06%
41) Toluene-d8	8.70	98	536432	43.19	µg/L	0.00
Spiked Amount	50.000	Range	80 - 120	Recovery	=	86.38%
43) trans-1,3-Dichloropropene-	8.99	79	89316	46.62	µg/L	0.00
Spiked Amount	50.000	Range	60 - 125	Recovery	=	93.24%
47) 2-Hexanone-d5	9.43	63	168229	112.74	µg/L	0.00
Spiked Amount	100.000	Range	45 - 130	Recovery	=	112.74%
56) 1,1,2,2-Tetrachloroethane-	11.23	84	221242	51.91	µg/L	0.00
Spiked Amount	50.000	Range	65 - 120	Recovery	=	103.82%
66) 1,2-Dichlorobenzene-d4	12.36	152	181018	49.87	µg/L	0.00
Spiked Amount	50.000	Range	80 - 120	Recovery	=	99.74%

## Target Compounds

Target Compounds	R.T.	QIon	Response	Conc	Units	Ovalue
2) Dichlorodifluoromethane	1.18	85	5080	1.868	µg/L	100
3) Chloromethane	1.31	50	5885	2.130	µg/L	96
5) Vinyl chloride	1.39	62	6890	2.213	µg/L #	56
6) Bromomethane	1.64	94	4393	2.135	µg/L	91
8) Chloroethane	1.72	64	4061	2.093	µg/L	97
9) Trichlorofluoromethane	1.92	101	8515	1.843	µg/L	96
10) 1,1,2-Trichloro-1,2,2-trif	2.37	101	6721	2.522	µg/L #	78
12) 1,1-Dichloroethene	2.36	96	6674	2.581	µg/L #	1
13) Acetone	2.43	43	5719	4.911	µg/L	94
14) Carbon disulfide	2.56	76	14334	1.837	µg/L	96
15) Methyl Acetate	2.75	43	5672	2.232	µg/L	99
16) Methylene chloride	2.84	84	6251	2.168	µg/L	89
17) trans-1,2-Dichloroethene	3.14	96	5506	1.981	µg/L	92
18) Methyl tert-butyl Ether	3.17	73	16802	1.912	µg/L	97
19) 1,1-Dichloroethane	3.67	63	9574	1.938	µg/L	97
20) cis-1,2-Dichloroethene	4.56	96	5851	1.916	µg/L	87
22) 2-Butanone	4.65	43	8318	4.523	µg/L	86

Data Path : Z:\VOASRV\HPCHEM1\MSVOA X\DATA\VX110320\  
 Data File : VX019230.D  
 Acq On : 03 Nov 2020 13:24  
 Operator : JC/MD  
 Sample : L4485-17  
 Misc : 5.0µ/5mL/100uL/5.00mL/MSVOA\_X/MEOH  
 ALS Vial : 12 Sample Multiplier: 1

Instrument :  
 MSVOA\_X  
 ClientSampleId :

Quant Time: Nov 04 01:23:57 2020  
 Quant Method : Z:\VOASRV\HPCHEM1\MSVOA\_X\METHOD\SFAMXLM110220WMA.M  
 Quant Title : VOC Analysis  
 QLast Update : Wed Nov 04 01:20:42 2020  
 Response via : Initial Calibration

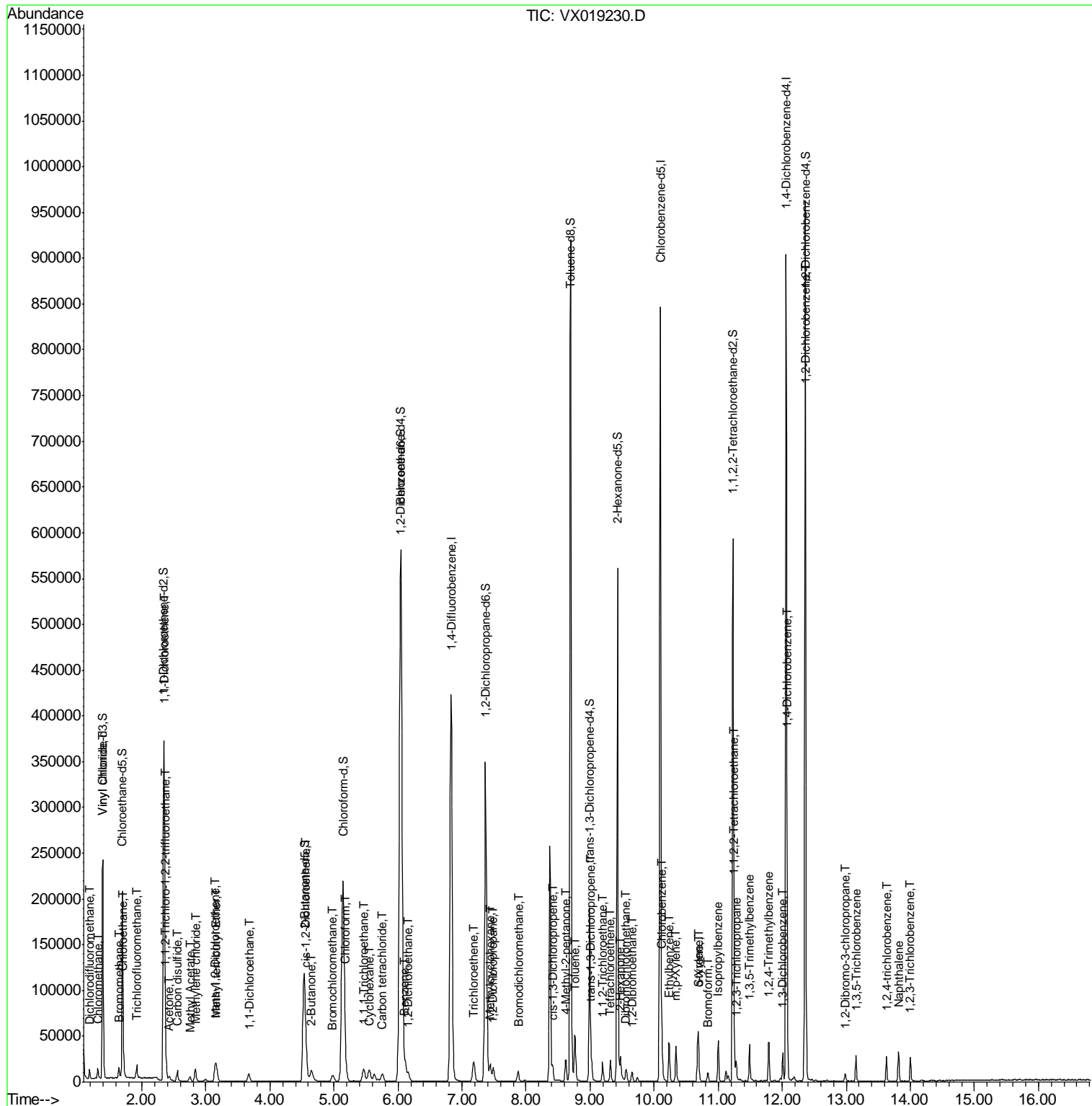
Internal Standards	R.T.	QIon	Response	Conc	Units	Dev(Min)
23) Bromochloromethane	4.98	128	3125	2.032	µg/L	83
25) Chloroform	5.18	83	21587	4.164	µg/L	94
27) 1,2-Dichloroethane	6.16	62	8656	2.120	µg/L	97
29) Cyclohexane	5.55	56	8297	1.829	µg/L #	94
30) 1,1,1-Trichloroethane	5.46	97	8974	1.889	µg/L	99
31) Carbon tetrachloride	5.76	117	7013	1.718	µg/L	95
33) Benzene	6.11	78	21884	1.934	µg/L	100
34) Trichloroethene	7.19	95	5876	1.903	µg/L	97
35) Methylcyclohexane	7.44	83	8337	1.706	µg/L	97
37) 1,2-Dichloropropane	7.49	63	5778	2.056	µg/L	99
38) Bromodichloromethane	7.88	83	6821	1.745	µg/L	99
39) cis-1,3-Dichloropropene	8.42	75	8646	1.852	µg/L	96
40) 4-Methyl-2-pentanone	8.62	43	13797	4.014	µg/L	99
42) Toluene	8.76	91	31146	2.530	µg/L	95
44) trans-1,3-Dichloropropene	9.02	75	8101	1.781	µg/L	99
45) 1,1,2-Trichloroethane	9.20	97	5310	1.923	µg/L	98
46) Tetrachloroethene	9.32	164	4211	1.807	µg/L	93
48) 2-Hexanone	9.48	43	14059	5.191	µg/L	97
49) Dibromochloromethane	9.56	129	5407	1.790	µg/L	93
50) 1,2-Dibromoethane	9.65	107	5635	1.951	µg/L	98
51) Chlorobenzene	10.12	112	15204	1.986	µg/L	97
52) Ethylbenzene	10.23	91	25388	1.908	µg/L	100
53) m,p-Xylene	10.34	106	9336	1.868	µg/L	97
54) o-Xylene	10.68	106	8926	1.844	µg/L	90
55) Styrene	10.70	104	14374	1.760	µg/L	96
57) 1,1,2,2-Tetrachloroethane	11.25	83	8638	2.282	µg/L #	96
59) Bromoform	10.84	173	3525	1.800	µg/L	96
60) Isopropylbenzene	11.00	105	23400	1.907	µg/L	99
61) 1,2,3-Trichloropropane	11.28	75	6636	2.155	µg/L	95
62) 1,3,5-Trimethylbenzene	11.49	105	17716	1.755	µg/L	99
63) 1,2,4-Trimethylbenzene	11.79	105	18447	1.932	µg/L	100
64) 1,3-Dichlorobenzene	12.01	146	10366	1.957	µg/L	89
65) 1,4-Dichlorobenzene	12.08	146	10723	1.995	µg/L	98
67) 1,2-Dichlorobenzene	12.37	146	10230	1.994	µg/L	96
68) 1,2-Dibromo-3-chloropropan	12.98	75	1610	1.920	µg/L	90
69) 1,3,5-Trichlorobenzene	13.15	180	6430	1.733	µg/L	99
70) 1,2,4-trichlorobenzene	13.63	180	6147	1.798	µg/L	99
71) Naphthalene	13.82	128	18824	1.703	µg/L	99
72) 1,2,3-Trichlorobenzene	14.00	180	5623	1.681	µg/L	93

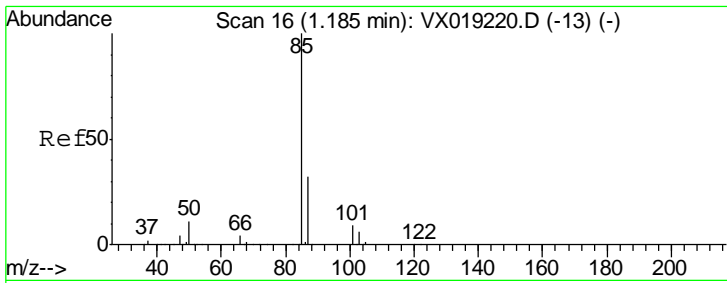
(#) = qualifier out of range (m) = manual integration (+) = signals summed

Data Path : Z:\VOASRV\HPCHEM1\MSVOA X\DATA\VX110320\  
 Data File : VX019230.D  
 Acq On : 03 Nov 2020 13:24  
 Operator : JC/MD  
 Sample : L4485-17  
 Misc : 5.0µ/5mL/100uL/5.00mL/MSVOA\_X/MEOH  
 ALS Vial : 12 Sample Multiplier: 1

Instrument :  
 MSVOA\_X  
 Client Sampled :

Quant Time: Nov 04 01:23:57 2020  
 Quant Method : Z:\VOASRV\HPCHEM1\MSVOA\_X\METHOD\SFAMXLM110220WMA.M  
 Quant Title : VOC Analysis  
 QLast Update : Wed Nov 04 01:20:42 2020  
 Response via : Initial Calibration

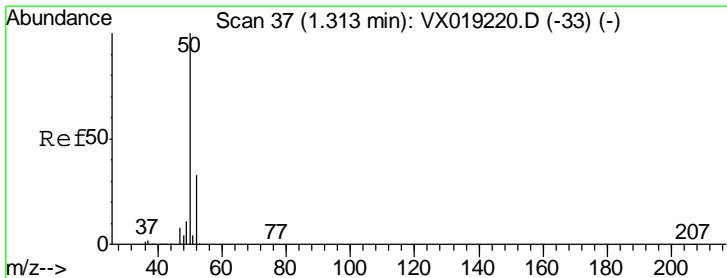
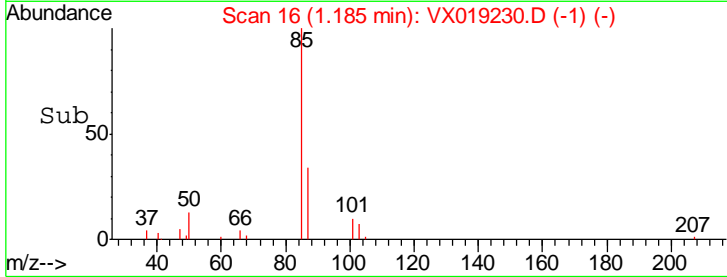
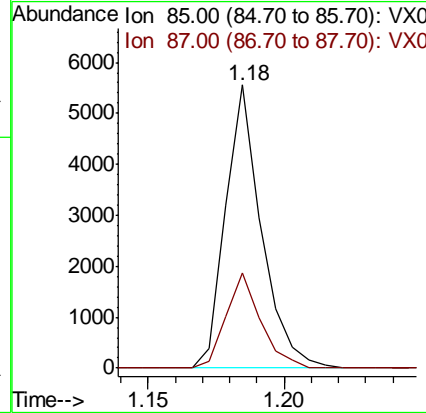
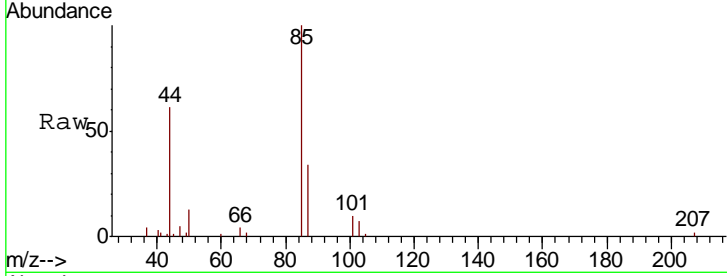




#2  
 Dichlorodifluoromethane  
 Concen: 1.868 ug/L  
 RT: 1.18 min Scan# 16  
 Delta R.T. 0.00 min  
 Lab File: VX019230.D  
 Acq: 03 Nov 2020 13:24

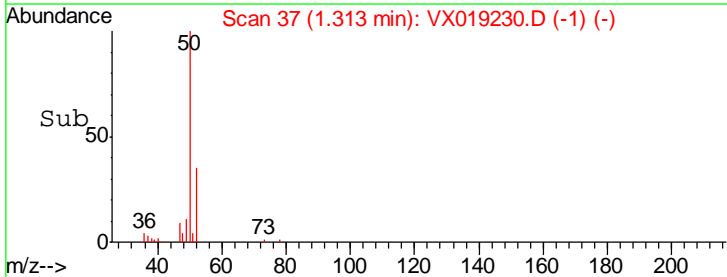
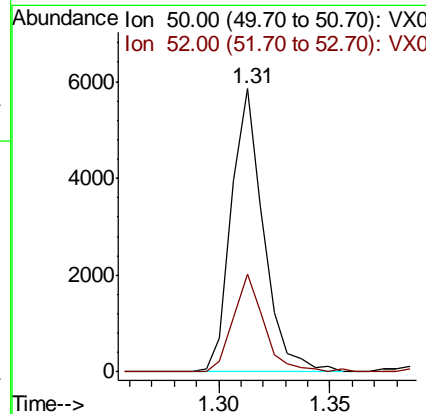
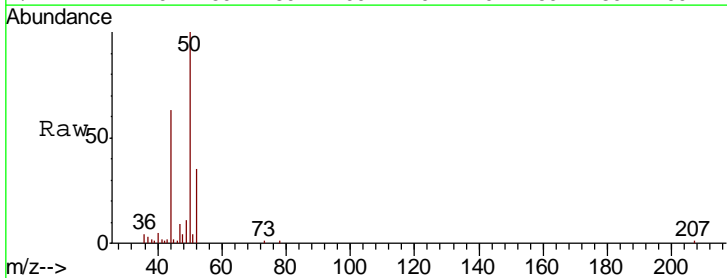
Instrument :  
 MSVOA\_X  
 ClientSampled :

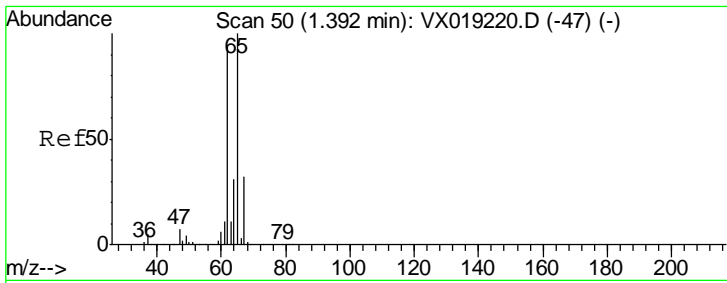
Tgt Ion: 85 Resp: 5080  
 Ion Ratio Lower Upper  
 85 100  
 87 32.4 25.8 38.8



#3  
 Chloromethane  
 Concen: 2.130 ug/L  
 RT: 1.31 min Scan# 37  
 Delta R.T. 0.00 min  
 Lab File: VX019230.D  
 Acq: 03 Nov 2020 13:24

Tgt Ion: 50 Resp: 5885  
 Ion Ratio Lower Upper  
 50 100  
 52 34.7 22.8 42.4

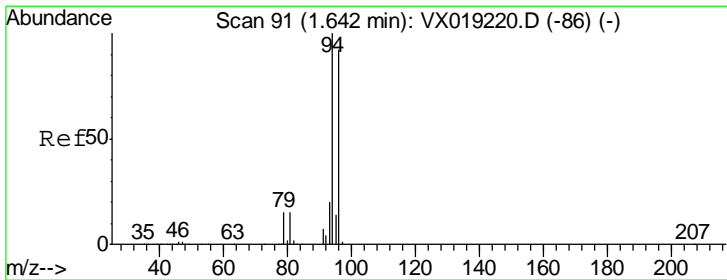
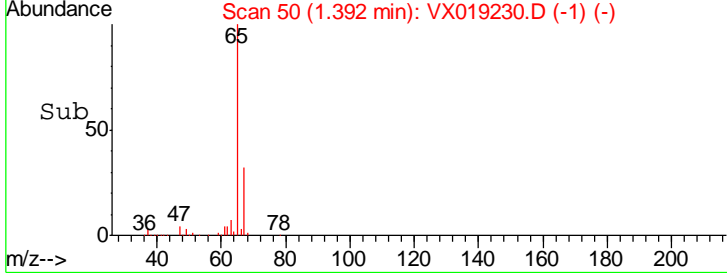
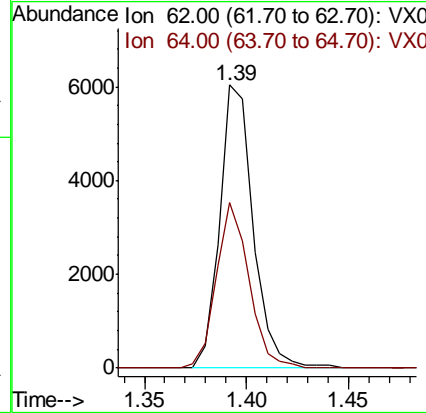
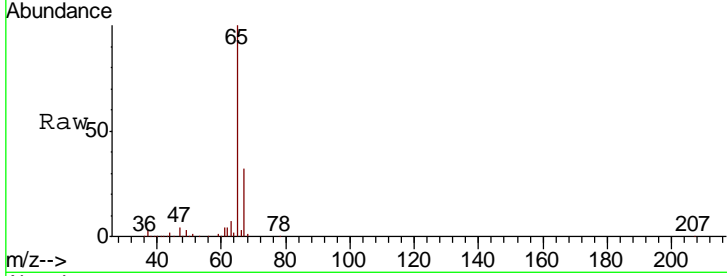




#5  
 Vinyl chloride  
 Concen: 2.213 ug/L  
 RT: 1.39 min Scan# 50  
 Delta R.T. 0.00 min  
 Lab File: VX019230.D  
 Acq: 03 Nov 2020 13:24

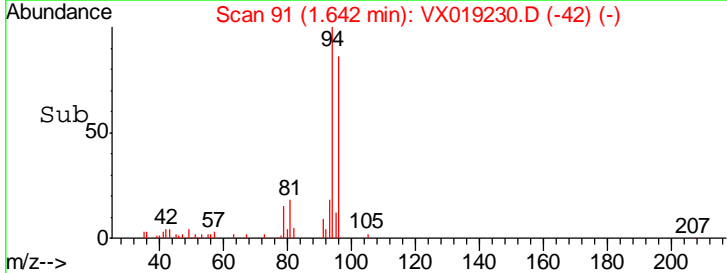
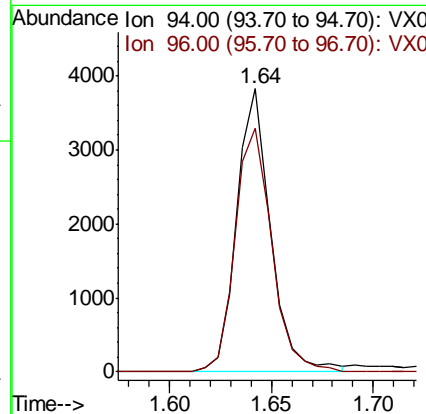
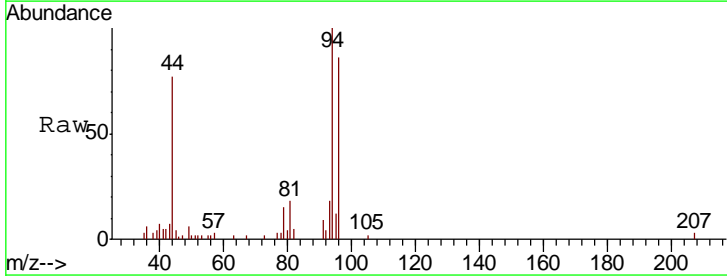
Instrument : MSVOA\_X  
 ClientSampled :

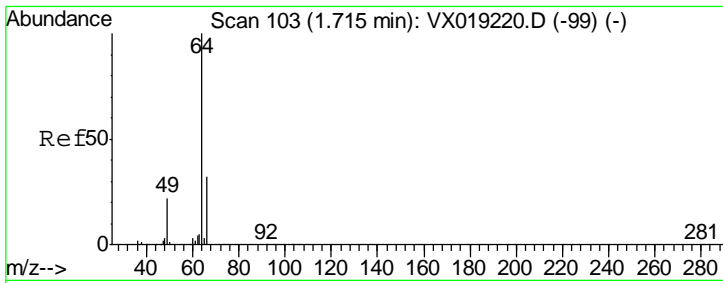
Tgt Ion	Resp	Lower	Upper
62	6890		
62	100		
64	58.5	23.4	43.6#



#6  
 Bromomethane  
 Concen: 2.135 ug/L  
 RT: 1.64 min Scan# 91  
 Delta R.T. 0.00 min  
 Lab File: VX019230.D  
 Acq: 03 Nov 2020 13:24

Tgt Ion	Resp	Lower	Upper
94	4393		
94	100		
96	86.0	66.0	122.6

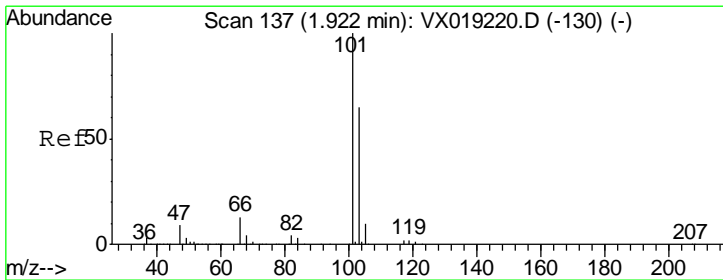
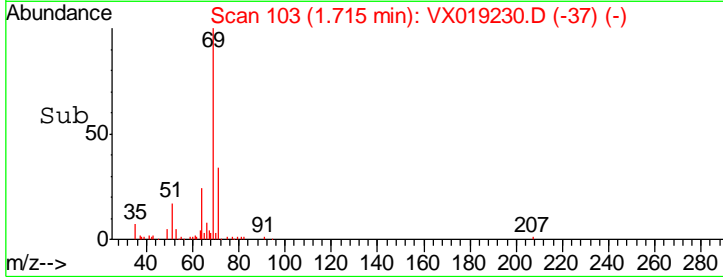
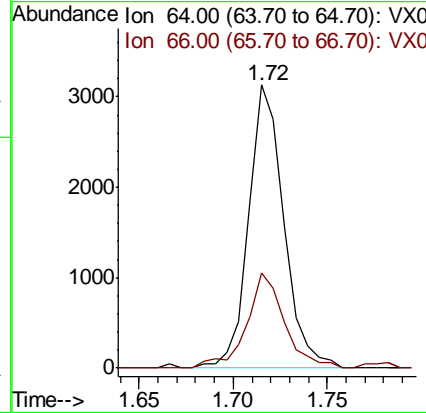
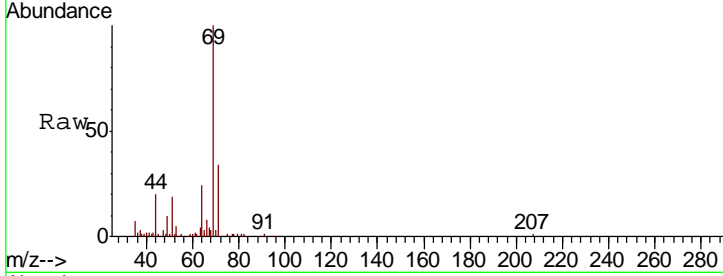




#8  
 Chloroethane  
 Concen: 2.093 ug/L  
 RT: 1.72 min Scan# 103  
 Delta R.T. 0.00 min  
 Lab File: VX019230.D  
 Acq: 03 Nov 2020 13:24

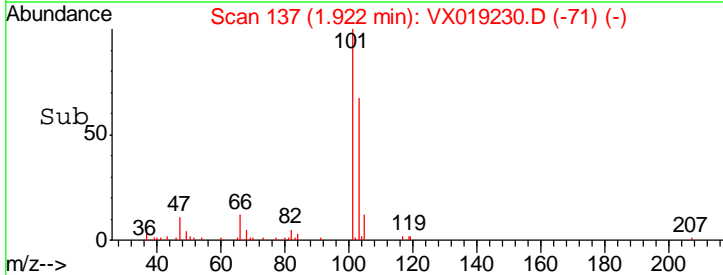
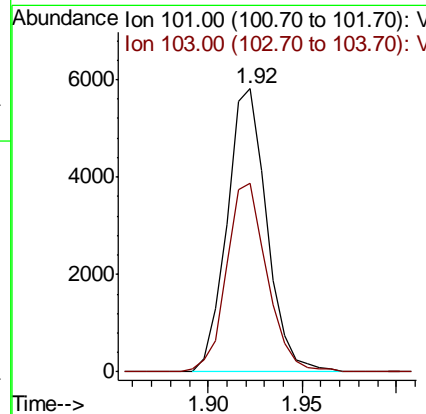
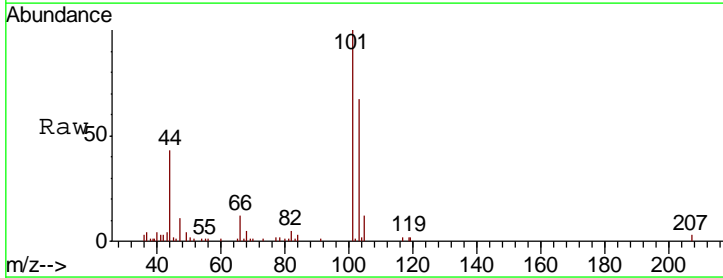
Instrument :  
 MSVOA\_X  
 ClientSampled :

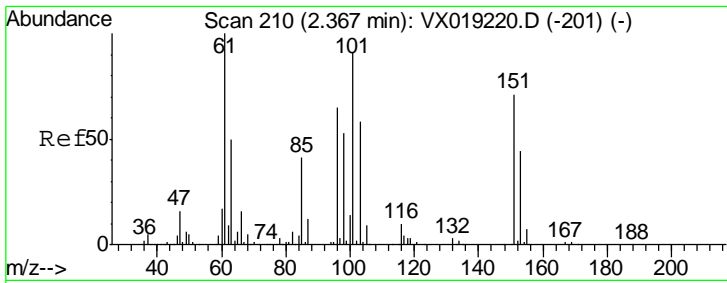
Tgt Ion	Resp	Lower	Upper
64	100		
66	33.6	22.5	41.9



#9  
 Trichlorofluoromethane  
 Concen: 1.843 ug/L  
 RT: 1.92 min Scan# 137  
 Delta R.T. 0.00 min  
 Lab File: VX019230.D  
 Acq: 03 Nov 2020 13:24

Tgt Ion	Resp	Lower	Upper
101	100		
103	67.6	51.3	76.9

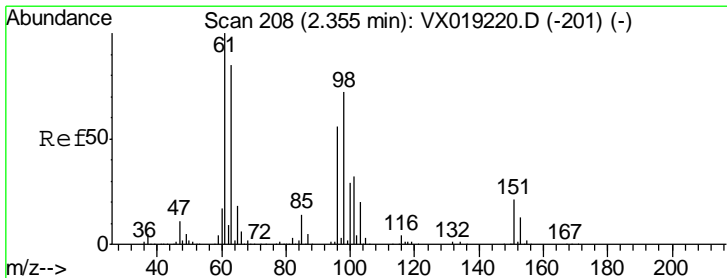
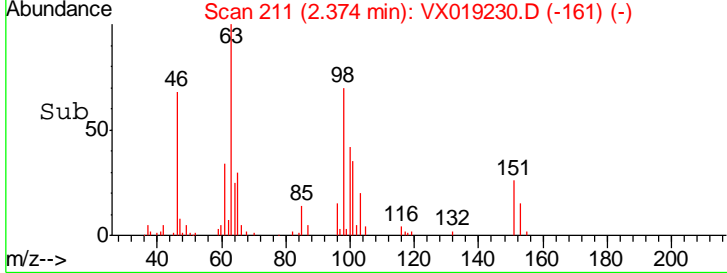
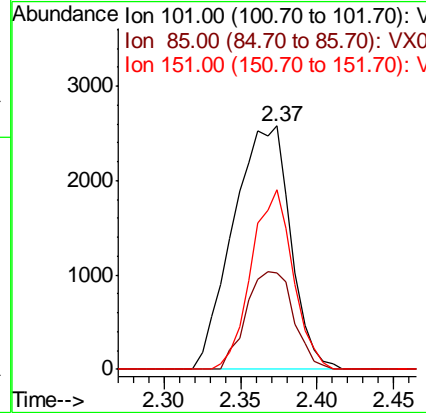
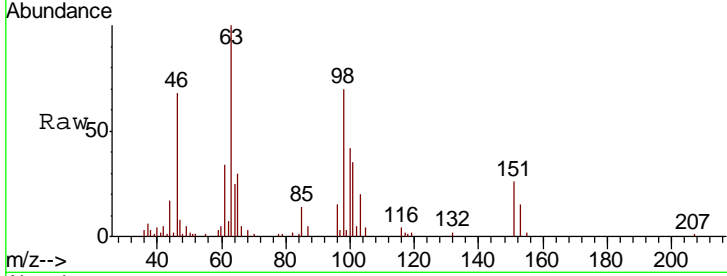




#10  
 1,1,2-Trichloro-1,2,2-trifluoroethane  
 Concen: 2.522 ug/L  
 RT: 2.37 min Scan# 211  
 Delta R.T. 0.01 min  
 Lab File: VX019230.D  
 Acq: 03 Nov 2020 13:24

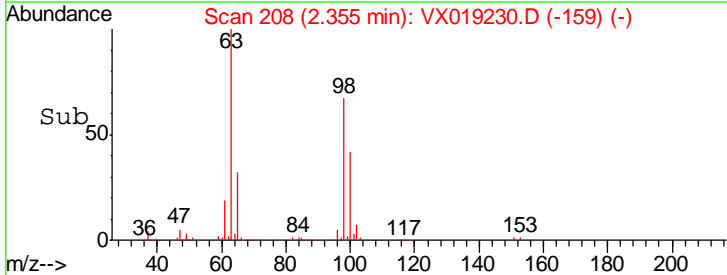
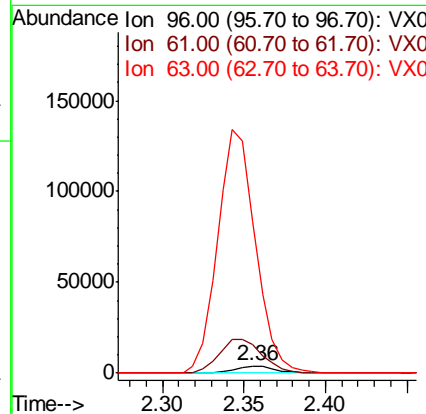
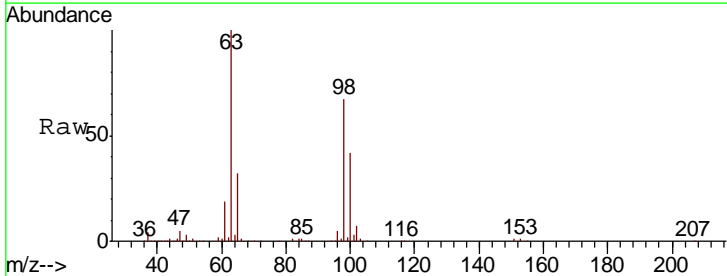
Instrument :  
 MSVOA\_X  
 ClientSampled :

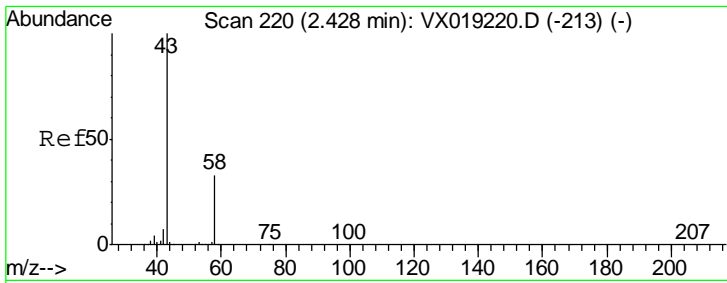
Tgt Ion	Resp	Lower	Upper
101	6721		
85	33.3	35.0	52.4#
151	53.8	59.9	89.9#



#12  
 1,1-Dichloroethene  
 Concen: 2.581 ug/L  
 RT: 2.36 min Scan# 208  
 Delta R.T. 0.00 min  
 Lab File: VX019230.D  
 Acq: 03 Nov 2020 13:24

Tgt Ion	Resp	Lower	Upper
96	6674		
61	394.1	115.1	213.8#
63	2114.9	78.3	145.5#

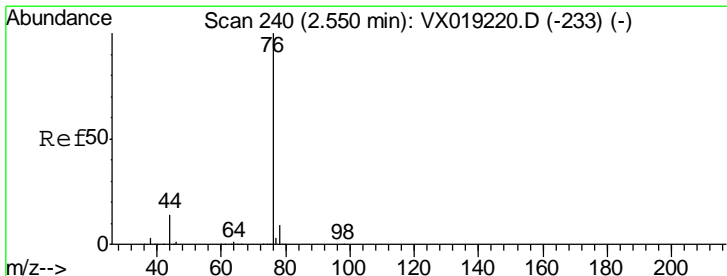
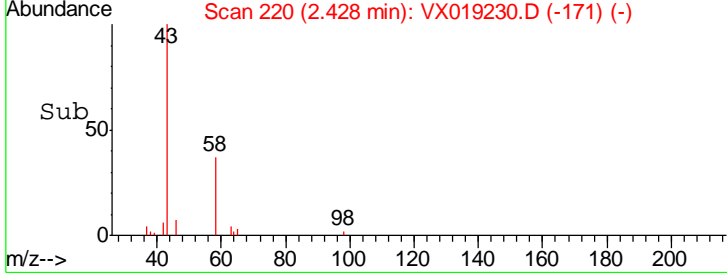
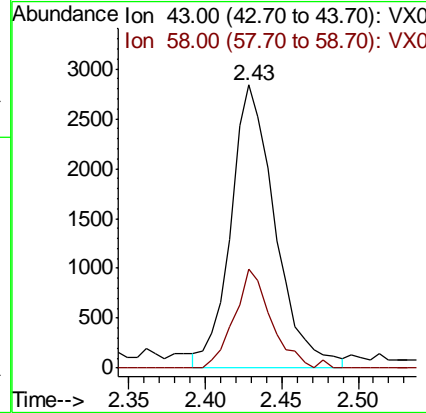
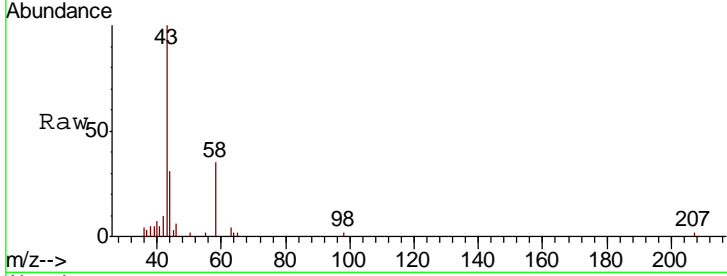




#13  
 Acetone  
 Concen: 4.911 ug/L  
 RT: 2.43 min Scan# 220  
 Delta R.T. 0.00 min  
 Lab File: VX019230.D  
 Acq: 03 Nov 2020 13:24

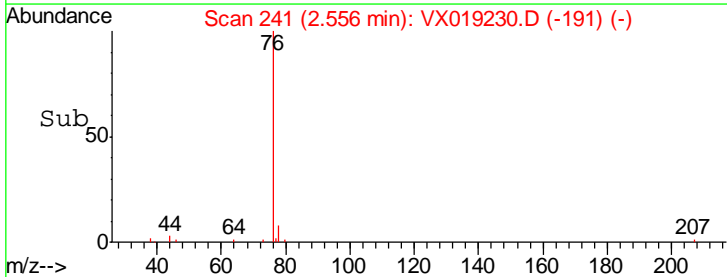
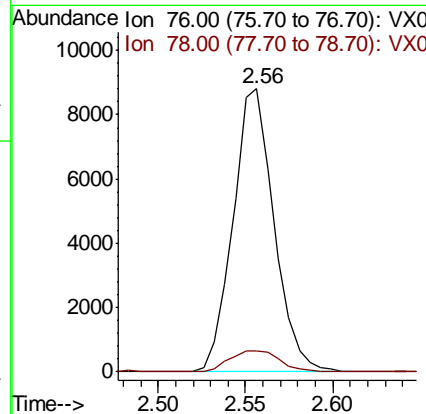
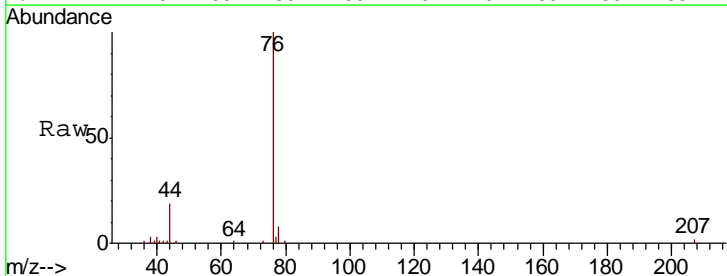
Instrument : MSVOA\_X  
 ClientSampled :

Tgt Ion	Ratio	Lower	Upper
43	100		
58	28.8	0.0	64.6

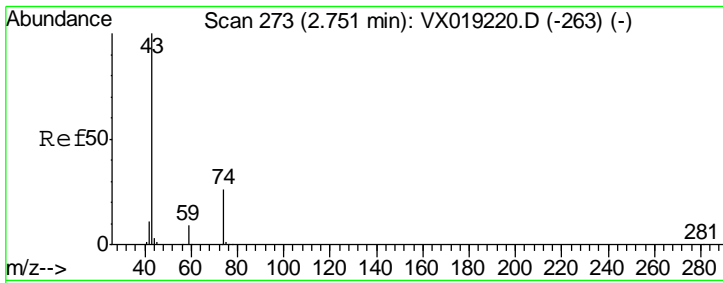


#14  
 Carbon disulfide  
 Concen: 1.837 ug/L  
 RT: 2.56 min Scan# 241  
 Delta R.T. 0.01 min  
 Lab File: VX019230.D  
 Acq: 03 Nov 2020 13:24

Tgt Ion	Ratio	Lower	Upper
76	100		
78	7.5	7.1	10.7



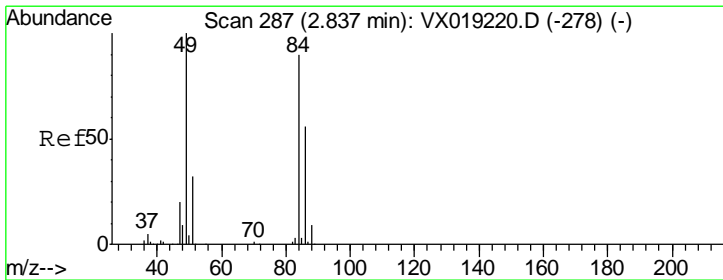
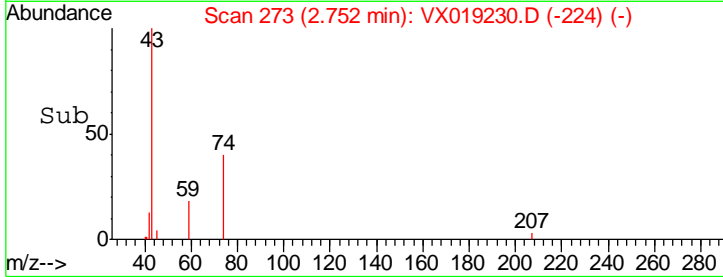
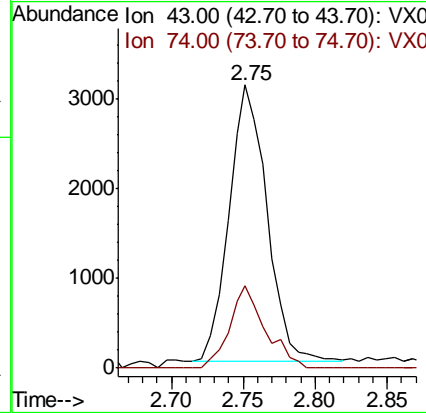
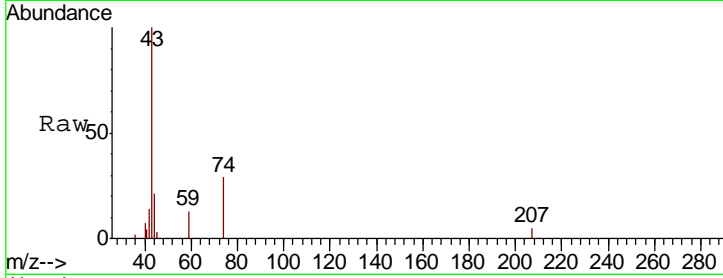




#15  
 Methyl Acetate  
 Concen: 2.232 ug/L  
 RT: 2.75 min Scan# 273  
 Delta R.T. 0.00 min  
 Lab File: VX019230.D  
 Acq: 03 Nov 2020 13:24

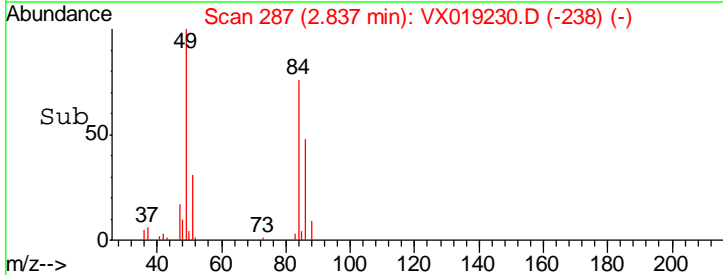
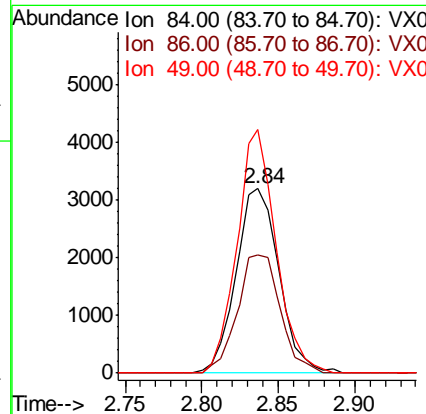
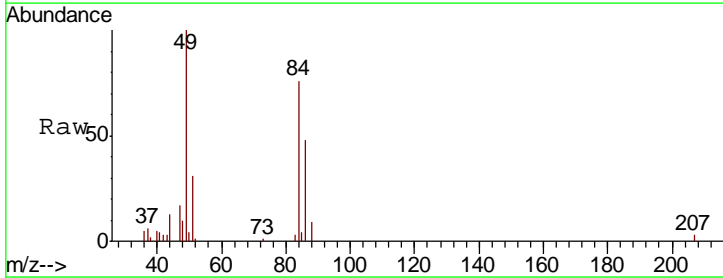
Instrument :  
 MSVOA\_X  
 ClientSampled :

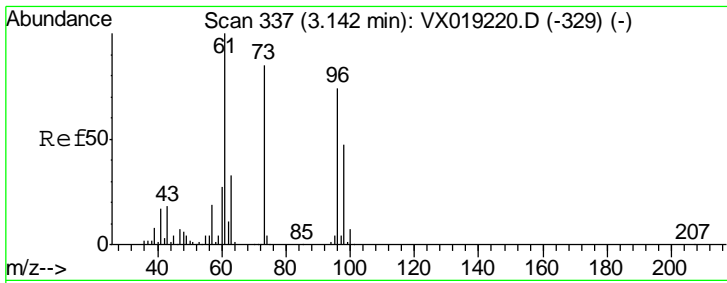
Tgt Ion	Resp	Lower	Upper
43	5672		
74	27.8	21.8	32.8



#16  
 Methylene chloride  
 Concen: 2.168 ug/L  
 RT: 2.84 min Scan# 287  
 Delta R.T. 0.00 min  
 Lab File: VX019230.D  
 Acq: 03 Nov 2020 13:24

Tgt Ion	Resp	Lower	Upper
84	6251		
86	63.8	44.0	81.6
49	132.0	80.6	149.6

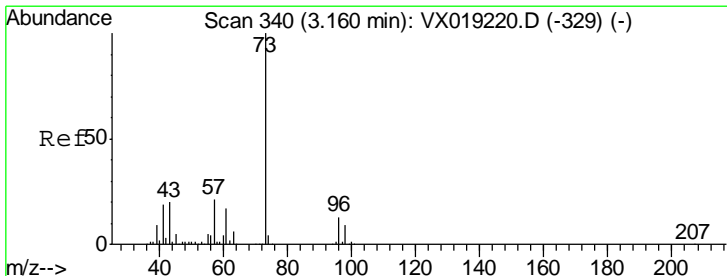
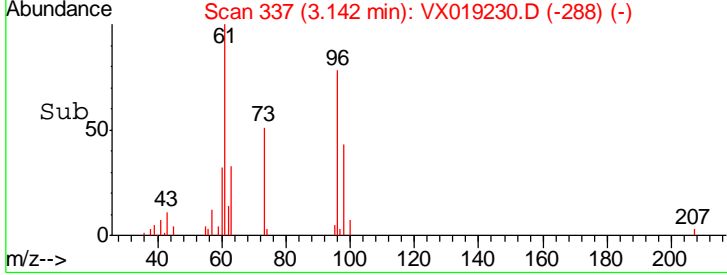
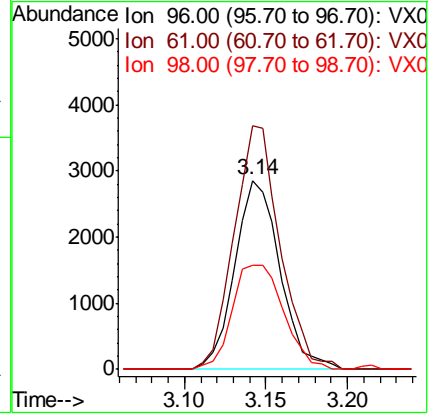
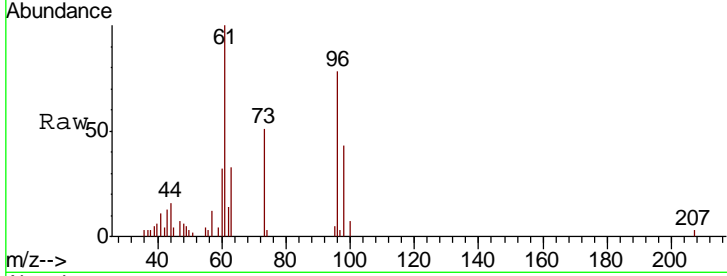




#17  
 trans-1,2-Dichloroethene  
 Concen: 1.981 ug/L  
 RT: 3.14 min Scan# 337  
 Delta R.T. 0.00 min  
 Lab File: VX019230.D  
 Acq: 03 Nov 2020 13:24

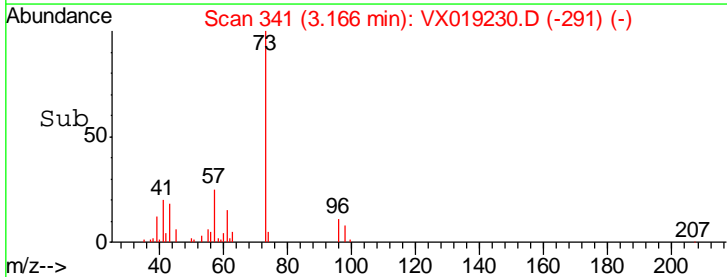
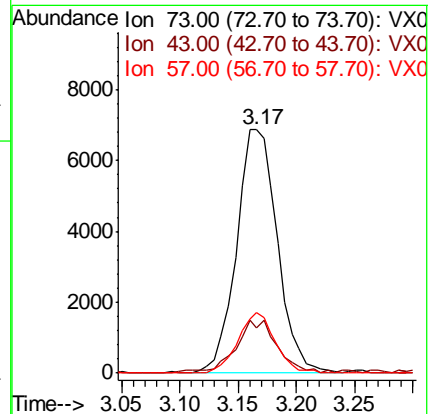
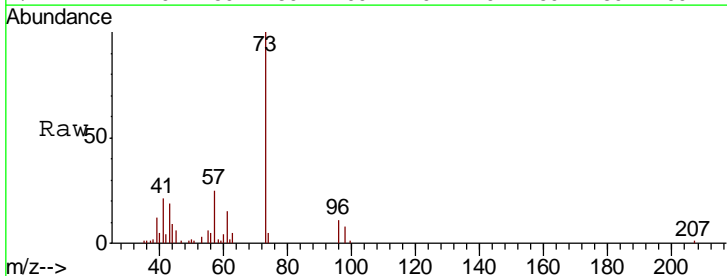
Instrument :  
 MSVOA\_X  
 ClientSampled :

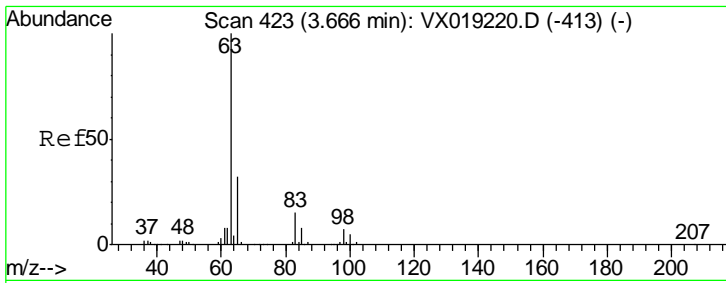
Tgt Ion	Resp	Lower	Upper
96	5506		
61	128.9	95.7	177.7
98	55.1	44.2	82.0



#18  
 Methyl tert-butyl Ether  
 Concen: 1.912 ug/L  
 RT: 3.17 min Scan# 341  
 Delta R.T. 0.01 min  
 Lab File: VX019230.D  
 Acq: 03 Nov 2020 13:24

Tgt Ion	Resp	Lower	Upper
73	16802		
43	21.2	15.8	23.6
57	22.4	17.0	25.4

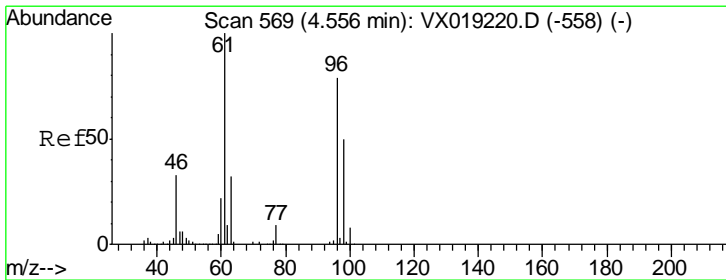
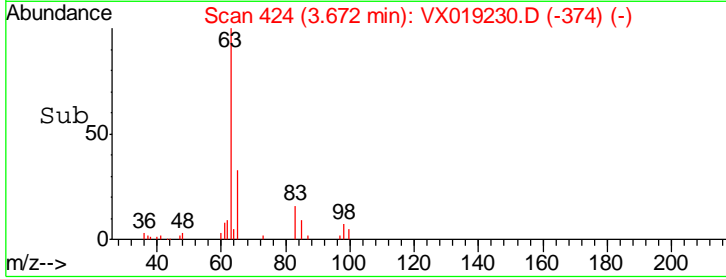
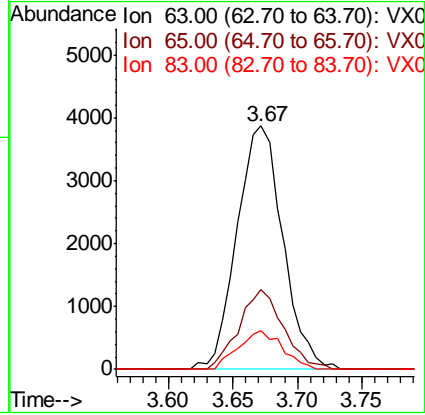
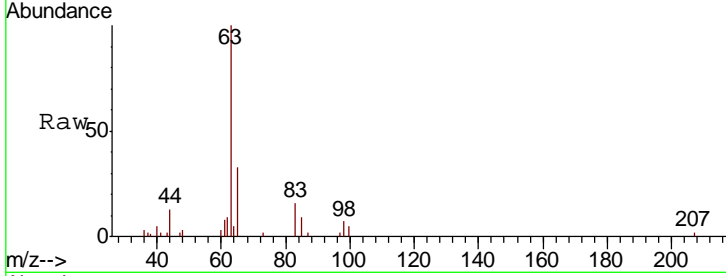




#19  
 1,1-Dichloroethane  
 Concen: 1.938 ug/L  
 RT: 3.67 min Scan# 424  
 Delta R.T. 0.01 min  
 Lab File: VX019230.D  
 Acq: 03 Nov 2020 13:24

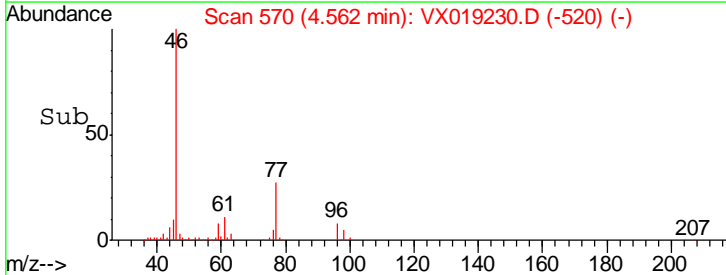
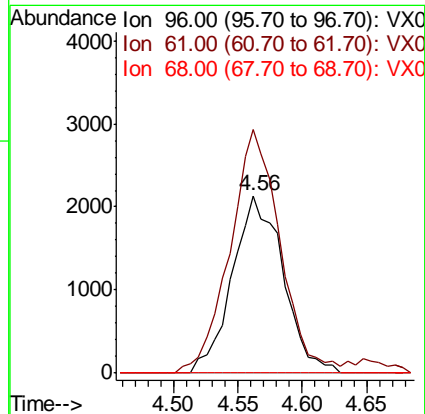
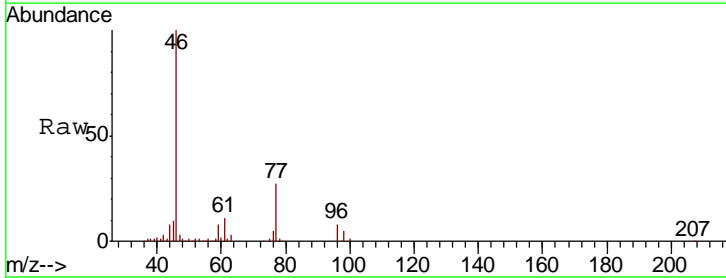
Instrument :  
 MSVOA\_X  
 ClientSampled :

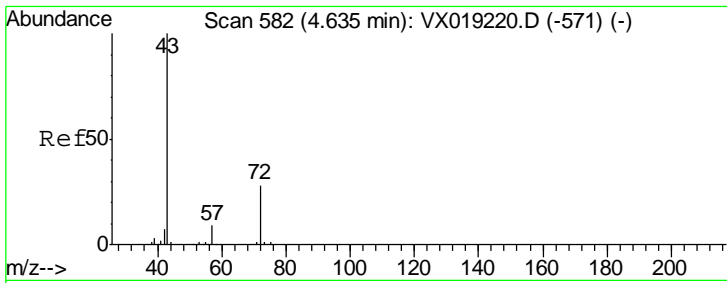
Tgt Ion	Resp	Lower	Upper
63	100		
65	32.5	22.3	41.3
83	16.1	9.7	18.1



#20  
 cis-1,2-Dichloroethene  
 Concen: 1.916 ug/L  
 RT: 4.56 min Scan# 570  
 Delta R.T. 0.01 min  
 Lab File: VX019230.D  
 Acq: 03 Nov 2020 13:24

Tgt Ion	Resp	Lower	Upper
96	100		
61	137.5	86.1	159.9
68	0.0	0.0	0.0

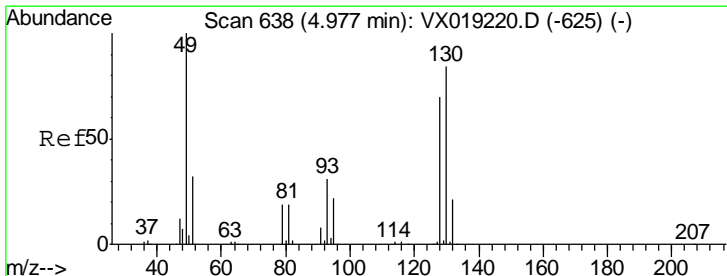
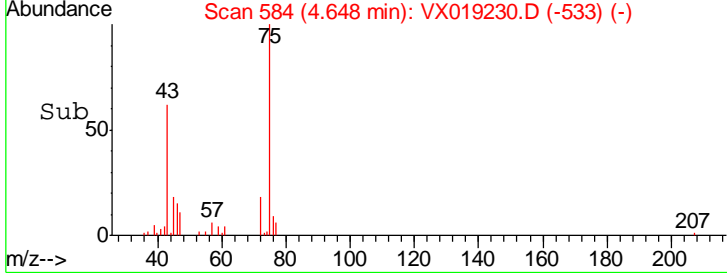
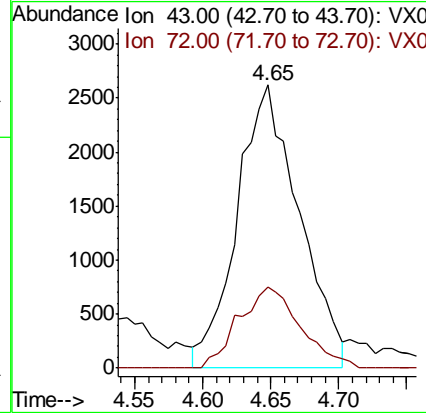
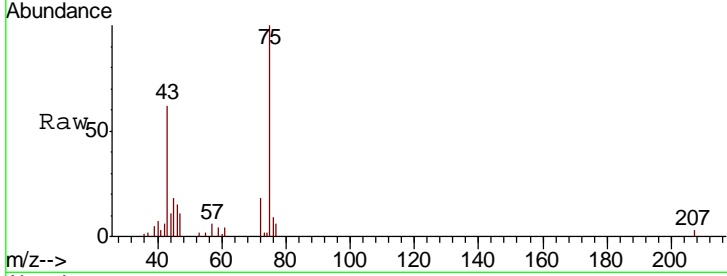




#22  
 2-Butanone  
 Concen: 4.523 ug/L  
 RT: 4.65 min Scan# 584  
 Delta R.T. 0.01 min  
 Lab File: VX019230.D  
 Acq: 03 Nov 2020 13:24

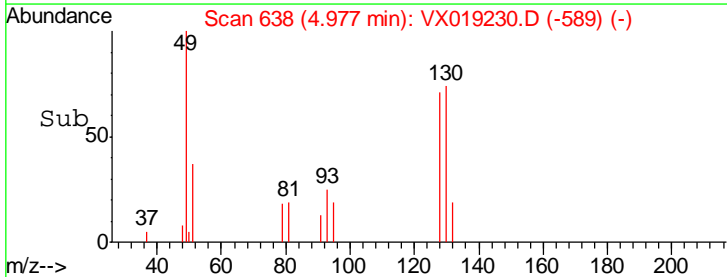
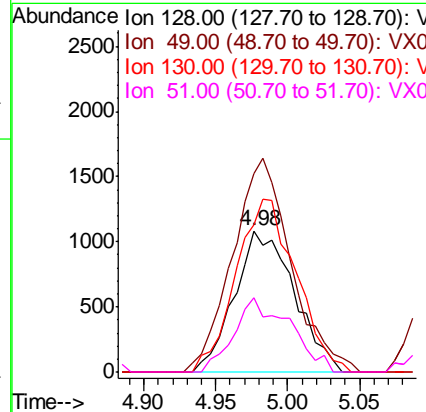
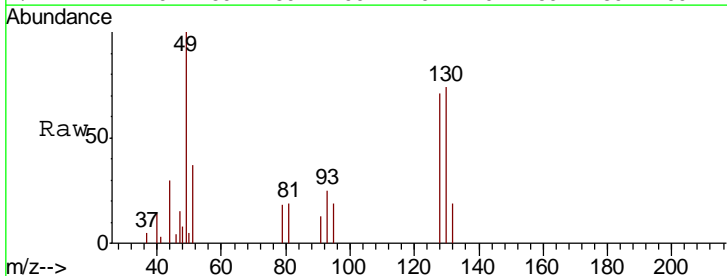
Instrument :  
 MSVOA\_X  
 ClientSampled :

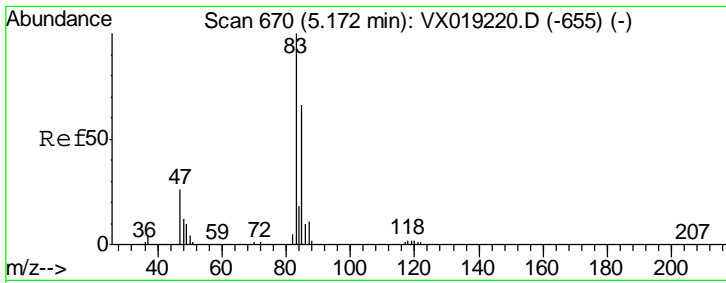
Tgt Ion	Resp	Lower	Upper
43	100		
72	22.4	15.0	45.0



#23  
 Bromochloromethane  
 Concen: 2.032 ug/L  
 RT: 4.98 min Scan# 638  
 Delta R.T. 0.00 min  
 Lab File: VX019230.D  
 Acq: 03 Nov 2020 13:24

Tgt Ion	Resp	Lower	Upper
128	100		
49	140.2	108.4	201.4
130	103.9	96.7	179.7
51	52.4	39.9	59.9

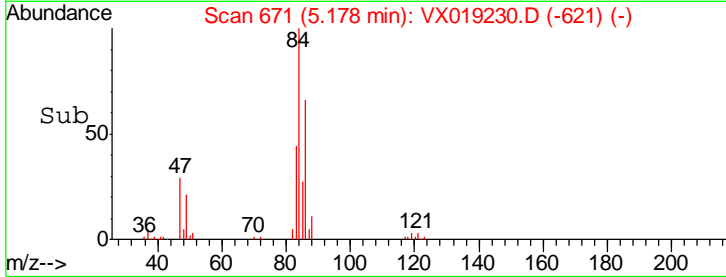
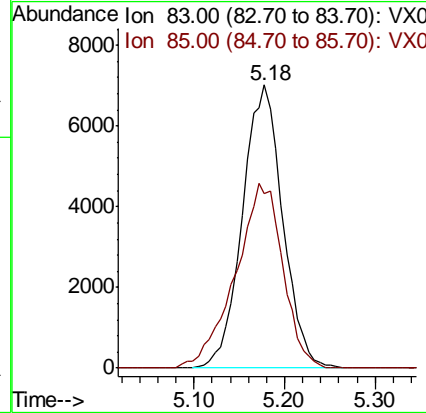
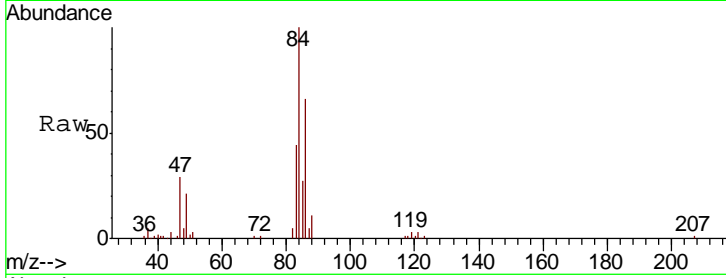




#25  
 Chloroform  
 Concen: 4.164 ug/L  
 RT: 5.18 min Scan# 671  
 Delta R.T. 0.01 min  
 Lab File: VX019230.D  
 Acq: 03 Nov 2020 13:24

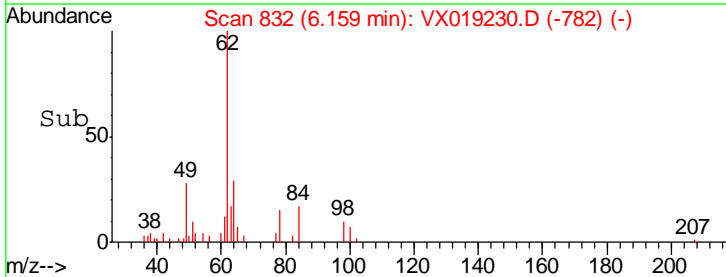
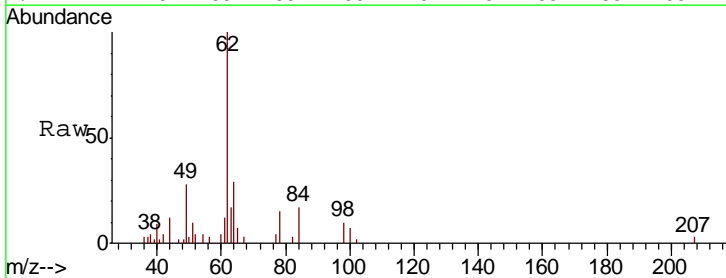
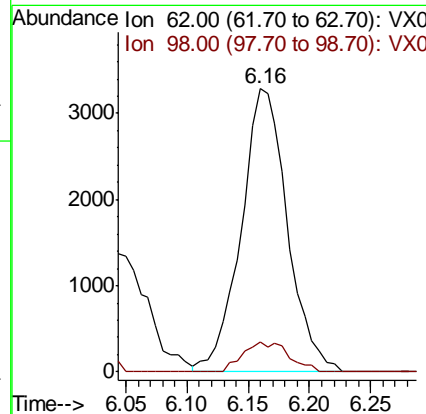
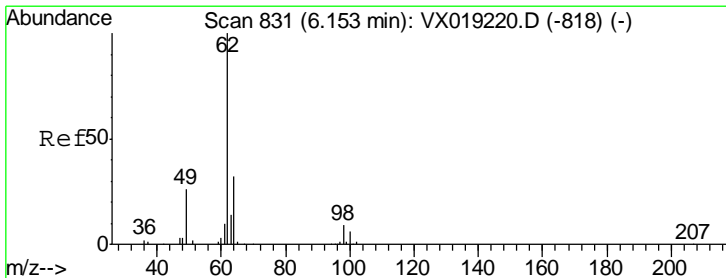
Instrument :  
 MSVOA\_X  
 ClientSampled :

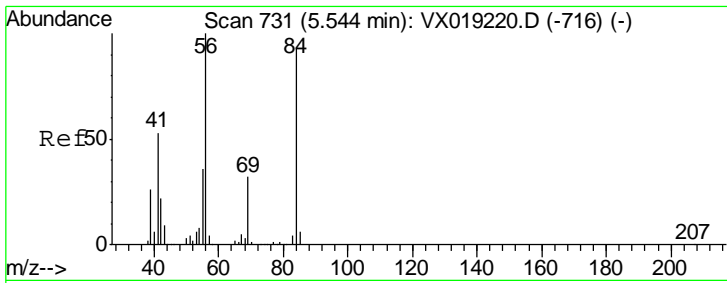
Tgt Ion: 83 Resp: 21587  
 Ion Ratio Lower Upper  
 83 100  
 85 61.6 46.5 86.3



#27  
 1,2-Dichloroethane  
 Concen: 2.120 ug/L  
 RT: 6.16 min Scan# 832  
 Delta R.T. 0.01 min  
 Lab File: VX019230.D  
 Acq: 03 Nov 2020 13:24

Tgt Ion: 62 Resp: 8656  
 Ion Ratio Lower Upper  
 62 100  
 98 10.5 7.6 11.4

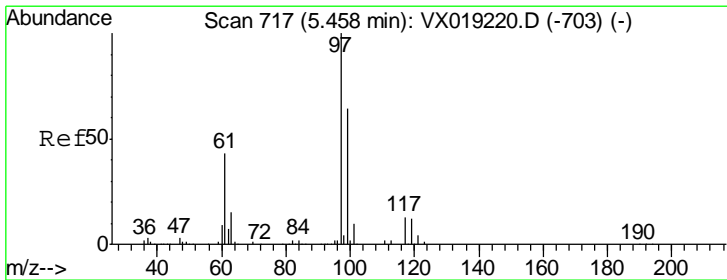
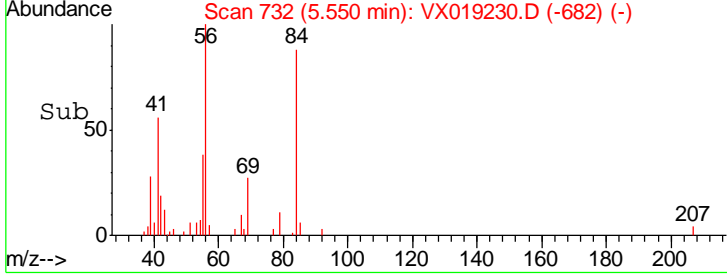
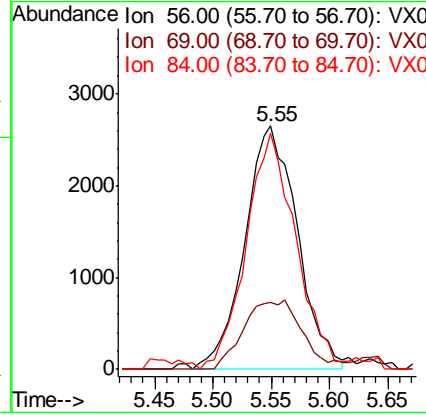
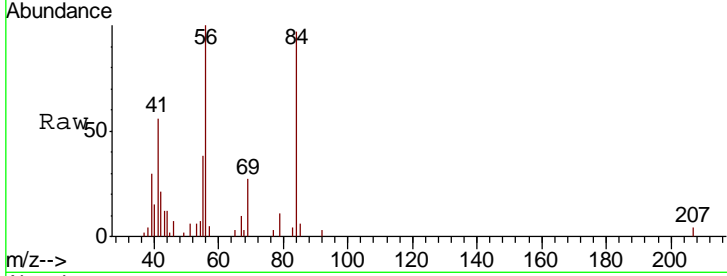




#29  
 Cyclohexane  
 Concen: 1.829 ug/L  
 RT: 5.55 min Scan# 732  
 Delta R.T. 0.01 min  
 Lab File: VX019230.D  
 Acq: 03 Nov 2020 13:24

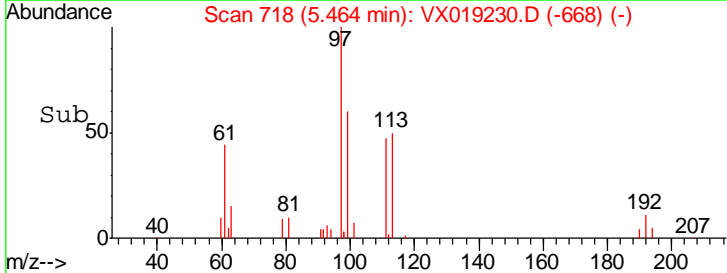
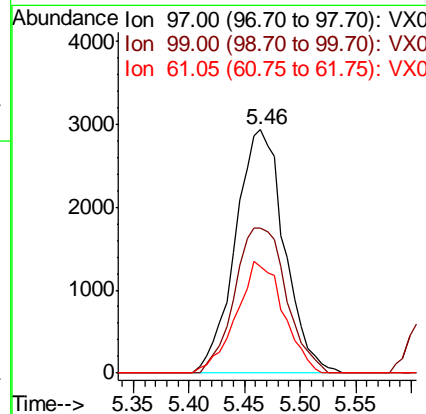
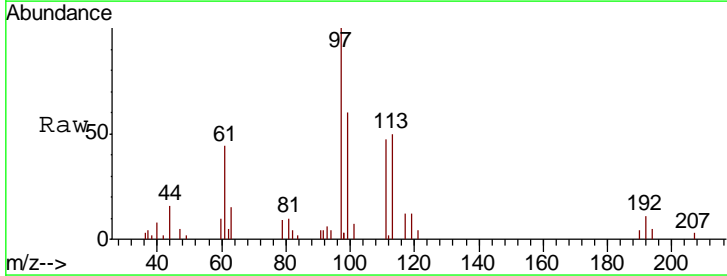
Instrument :  
 MSVOA\_X  
 ClientSampled :

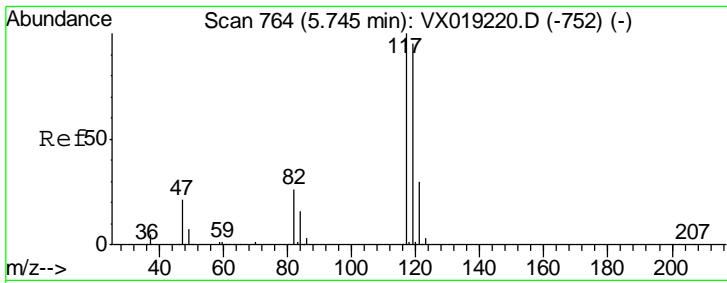
Tgt Ion	Resp	Lower	Upper
56	100		
69	19.4	25.2	37.8#
84	91.6	73.6	110.4



#30  
 1,1,1-Trichloroethane  
 Concen: 1.889 ug/L  
 RT: 5.46 min Scan# 718  
 Delta R.T. 0.01 min  
 Lab File: VX019230.D  
 Acq: 03 Nov 2020 13:24

Tgt Ion	Resp	Lower	Upper
97	100		
99	63.0	51.0	76.6
61	44.0	34.8	52.2

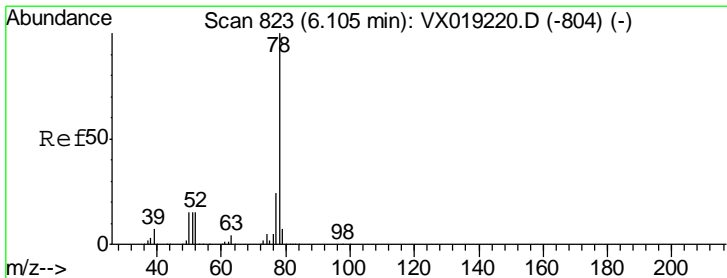
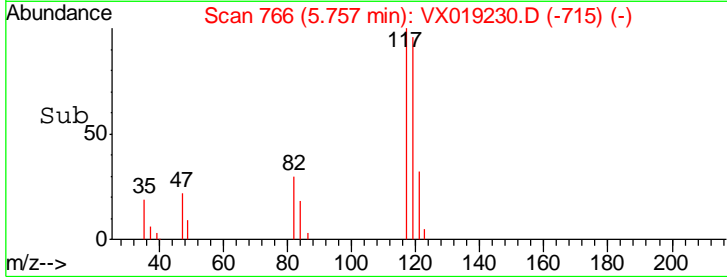
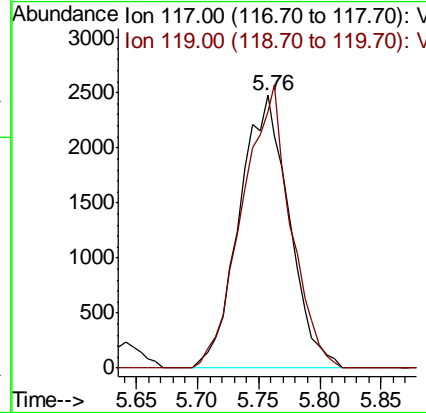
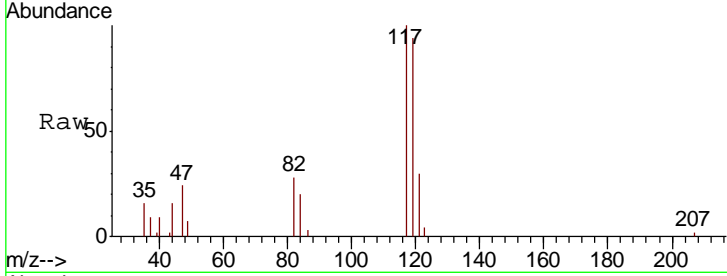




#31  
 Carbon tetrachloride  
 Concen: 1.718 ug/L  
 RT: 5.76 min Scan# 766  
 Delta R.T. 0.01 min  
 Lab File: VX019230.D  
 Acq: 03 Nov 2020 13:24

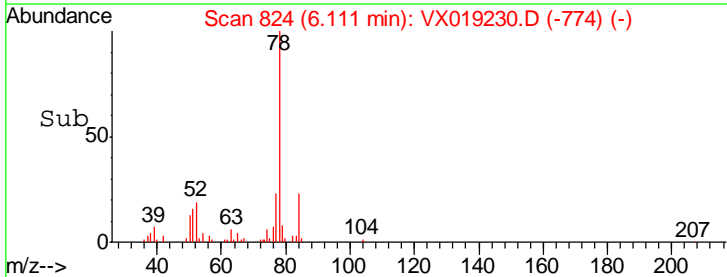
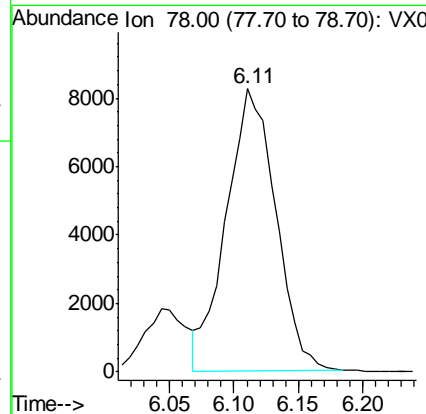
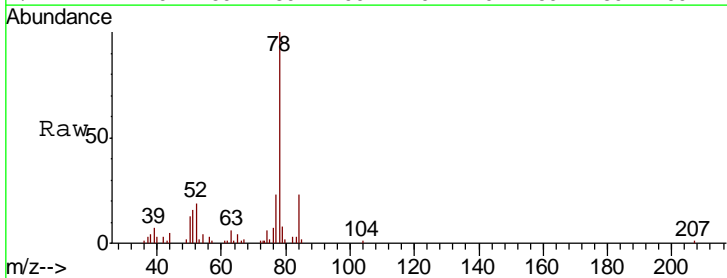
Instrument :  
 MSVOA\_X  
 ClientSampled :

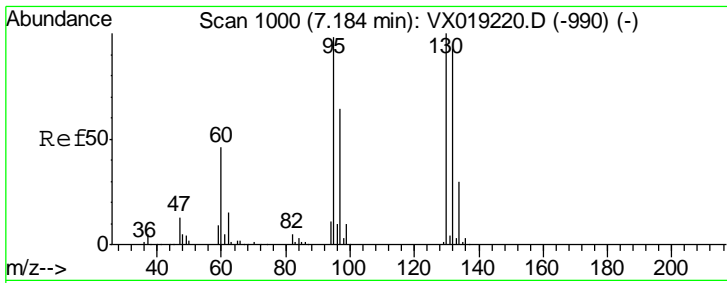
Tgt Ion: 117 Resp: 7013  
 Ion Ratio Lower Upper  
 117 100  
 119 100.8 76.9 115.3



#33  
 Benzene  
 Concen: 1.934 ug/L  
 RT: 6.11 min Scan# 824  
 Delta R.T. 0.01 min  
 Lab File: VX019230.D  
 Acq: 03 Nov 2020 13:24

Tgt Ion: 78 Resp: 21884

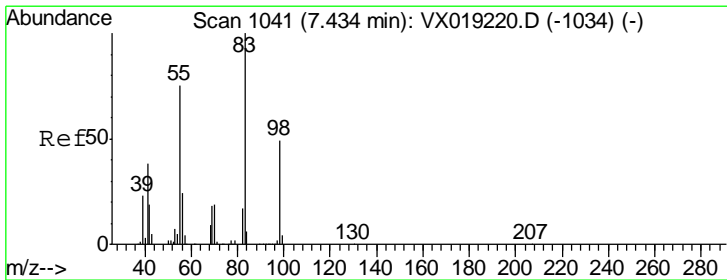
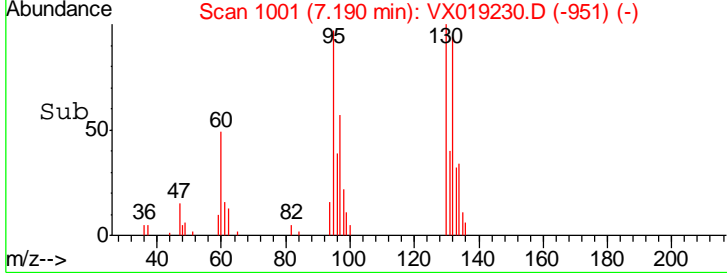
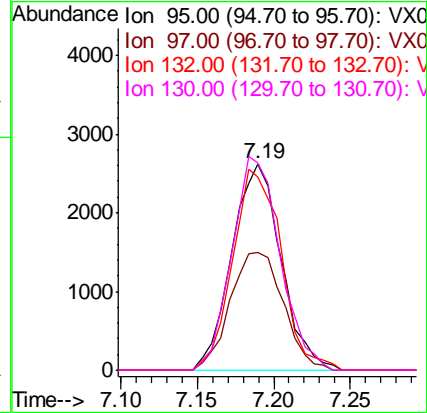
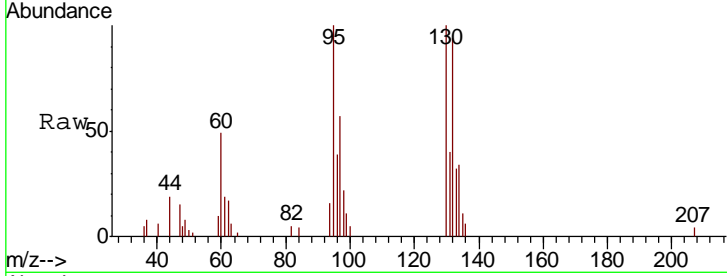




#34  
 Trichloroethene  
 Concen: 1.903 ug/L  
 RT: 7.19 min Scan# 1001  
 Delta R.T. 0.01 min  
 Lab File: VX019230.D  
 Acq: 03 Nov 2020 13:24

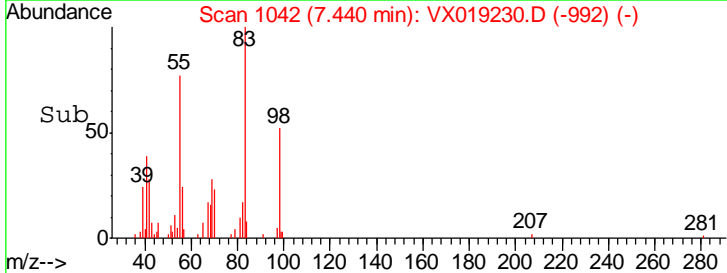
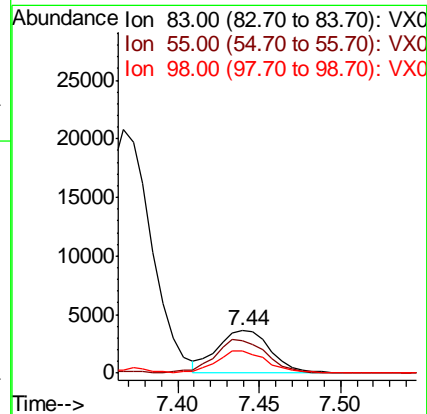
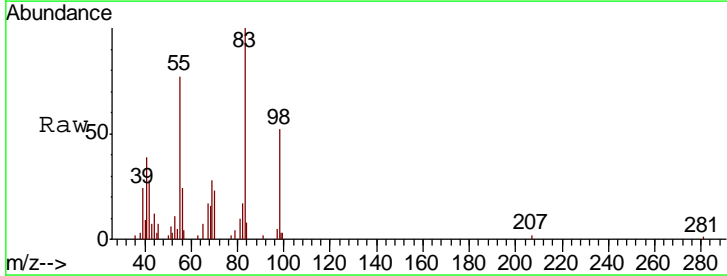
Instrument :  
 MSVOA\_X  
 ClientSampled :

Tgt Ion	Resp	Lower	Upper
95	5876		
97	57.3	45.1	83.9
132	93.8	67.3	124.9
130	100.1	69.9	129.9

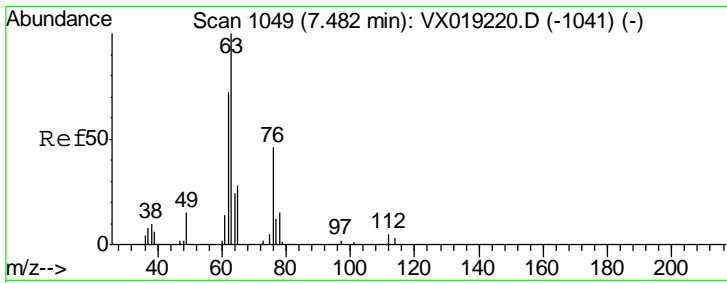


#35  
 Methylcyclohexane  
 Concen: 1.706 ug/L  
 RT: 7.44 min Scan# 1042  
 Delta R.T. 0.01 min  
 Lab File: VX019230.D  
 Acq: 03 Nov 2020 13:24

Tgt Ion	Resp	Lower	Upper
83	8337		
55	76.4	58.6	87.8
98	49.3	39.0	58.6



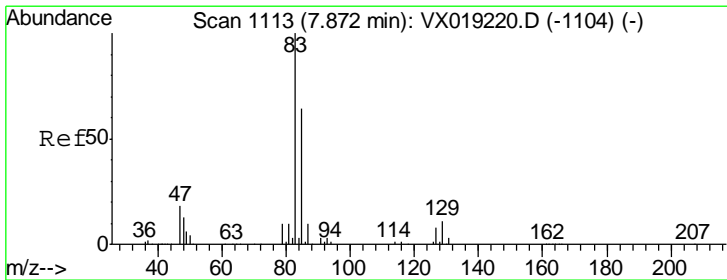
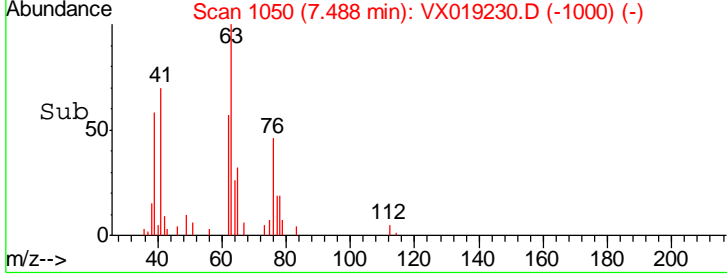
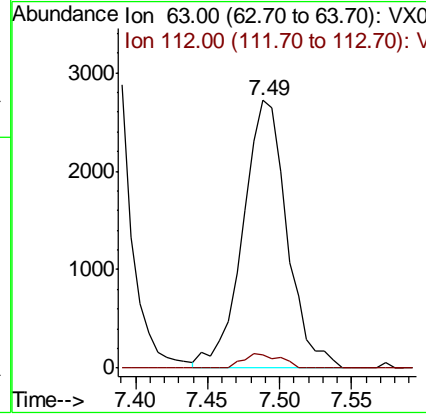
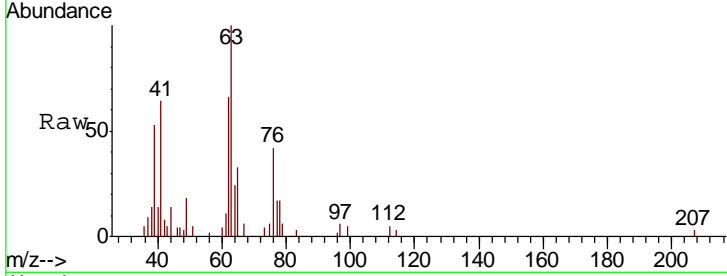




#37  
 1,2-Dichloropropane  
 Concen: 2.056 ug/L  
 RT: 7.49 min Scan# 1050  
 Delta R.T. 0.01 min  
 Lab File: VX019230.D  
 Acq: 03 Nov 2020 13:24

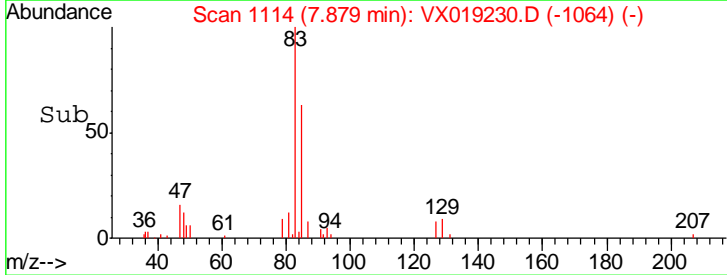
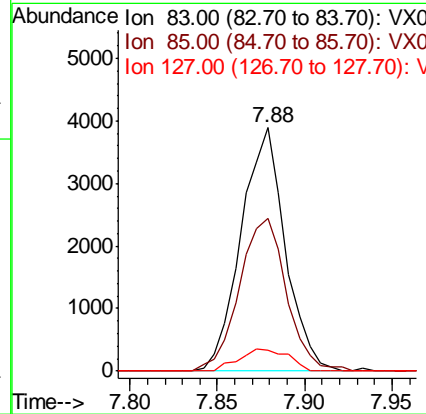
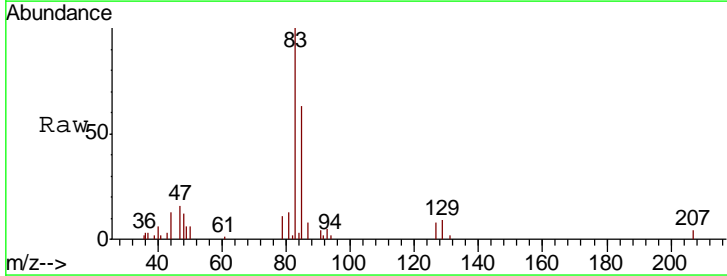
Instrument :  
 MSVOA\_X  
 ClientSampled :

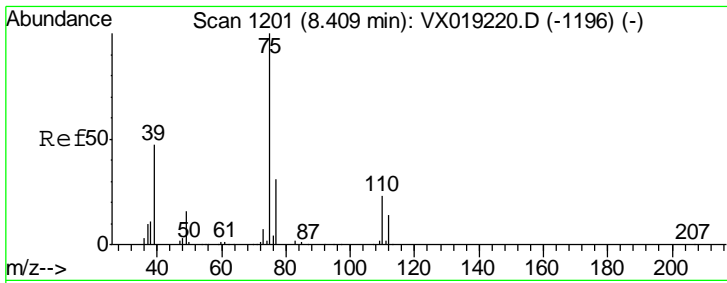
Tgt Ion	Resp	Lower	Upper
63	100		
112	4.5	3.8	5.6



#38  
 Bromodichloromethane  
 Concen: 1.745 ug/L  
 RT: 7.88 min Scan# 1114  
 Delta R.T. 0.01 min  
 Lab File: VX019230.D  
 Acq: 03 Nov 2020 13:24

Tgt Ion	Resp	Lower	Upper
83	100		
85	62.5	44.6	82.8
127	8.5	6.8	10.2

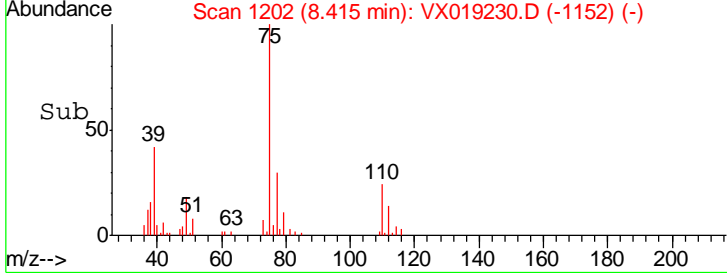
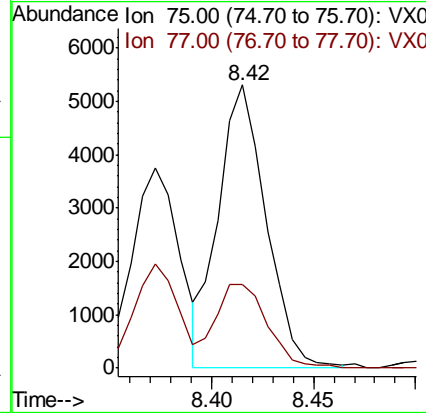
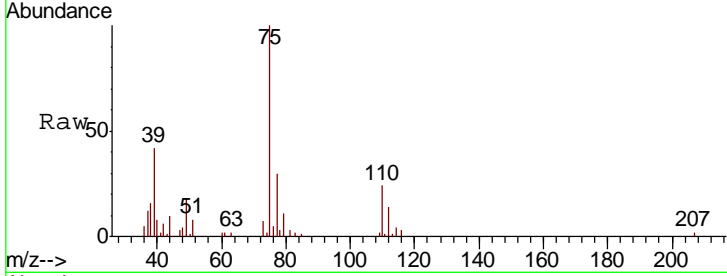




#39  
 cis-1,3-Dichloropropene  
 Concen: 1.852 ug/L  
 RT: 8.42 min Scan# 1202  
 Delta R.T. 0.01 min  
 Lab File: VX019230.D  
 Acq: 03 Nov 2020 13:24

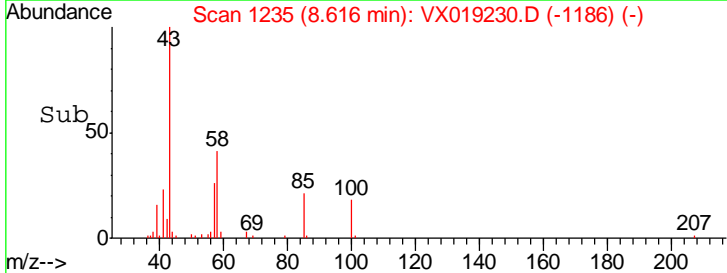
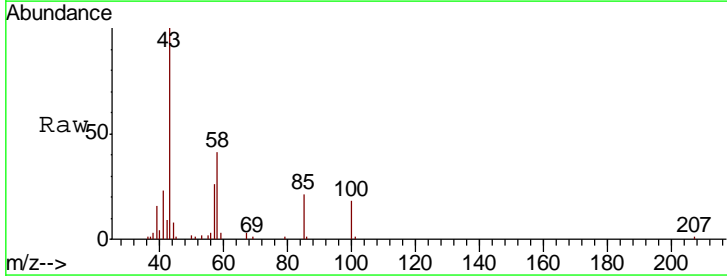
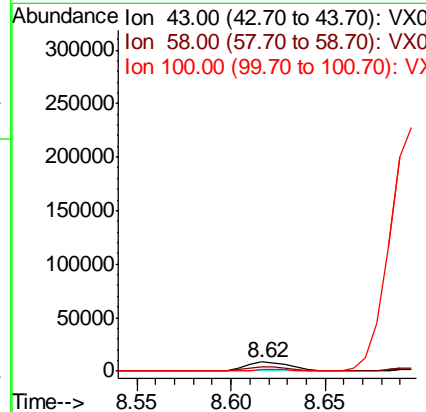
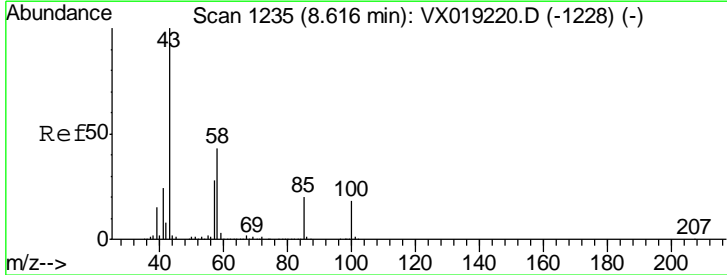
Instrument : MSVOA\_X  
 ClientSampled :

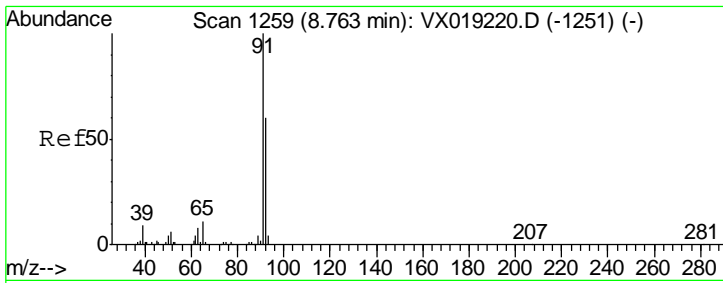
Tgt Ion:	75	Resp:	8646
Ion Ratio	Lower	Upper	
75	100		
77	29.7	22.5	41.7



#40  
 4-Methyl-2-pentanone  
 Concen: 4.014 ug/L  
 RT: 8.62 min Scan# 1235  
 Delta R.T. 0.00 min  
 Lab File: VX019230.D  
 Acq: 03 Nov 2020 13:24

Tgt Ion:	43	Resp:	13797
Ion Ratio	Lower	Upper	
43	100		
58	43.1	34.1	51.1
100	18.2	14.8	22.2

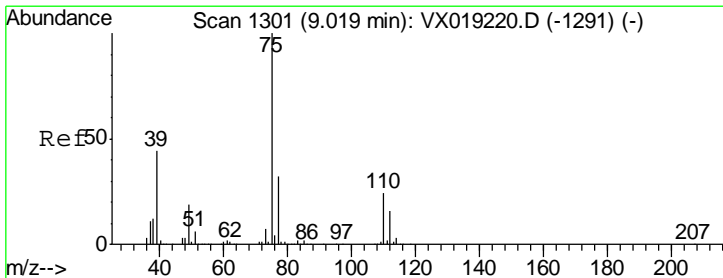
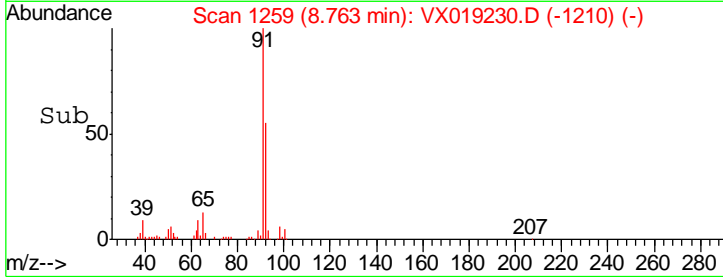
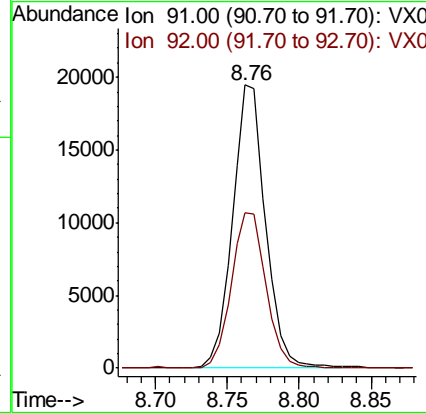
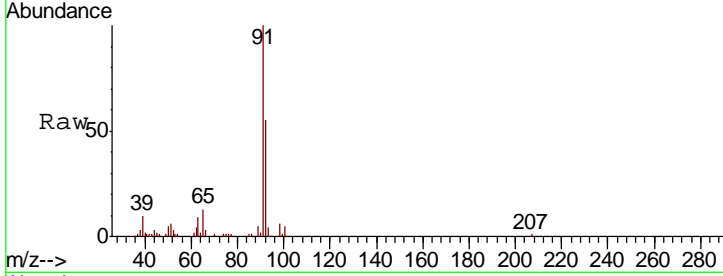




#42  
 Toluene  
 Concen: 2.530 ug/L  
 RT: 8.76 min Scan# 1259  
 Delta R.T. 0.00 min  
 Lab File: VX019230.D  
 Acq: 03 Nov 2020 13:24

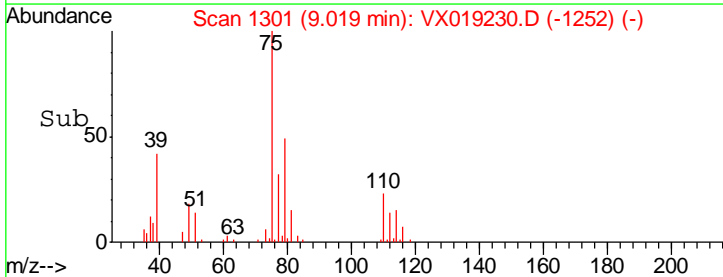
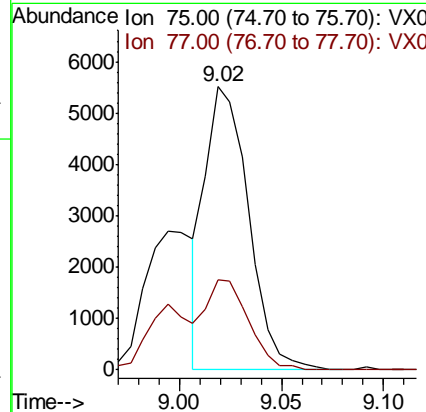
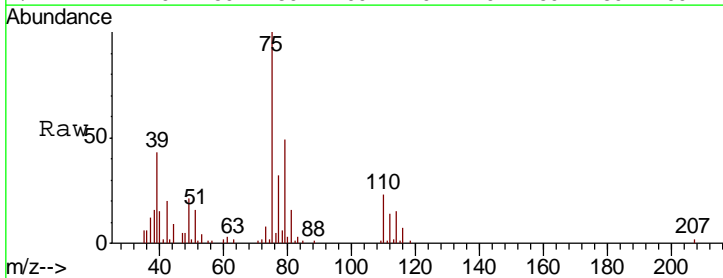
Instrument : MSVOA\_X  
 ClientSampled :

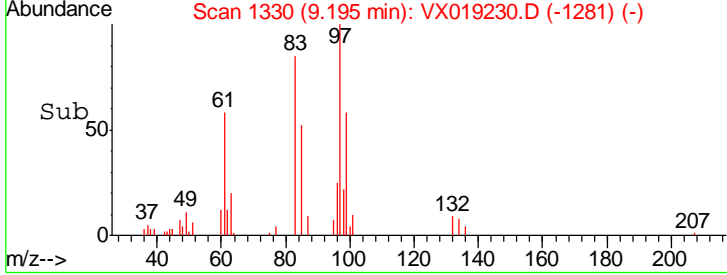
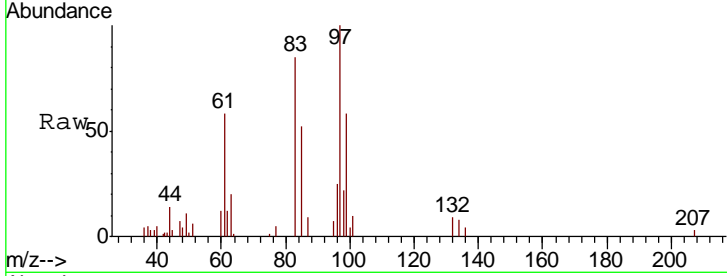
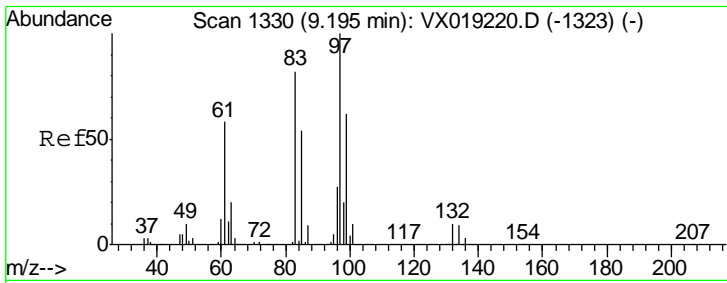
Tgt Ion	Resp	Lower	Upper
91	31146		
92	54.8	41.2	76.6



#44  
 trans-1,3-Dichloropropene  
 Concen: 1.781 ug/L  
 RT: 9.02 min Scan# 1301  
 Delta R.T. 0.00 min  
 Lab File: VX019230.D  
 Acq: 03 Nov 2020 13:24

Tgt Ion	Resp	Lower	Upper
75	8101		
77	31.8	21.8	40.6

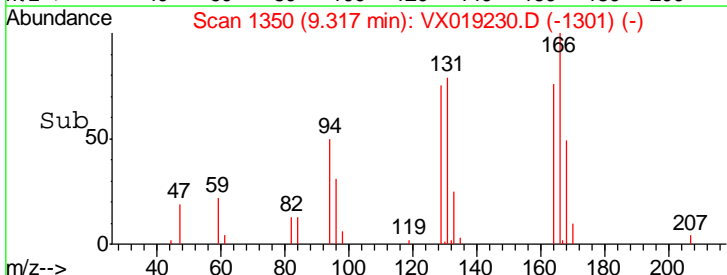
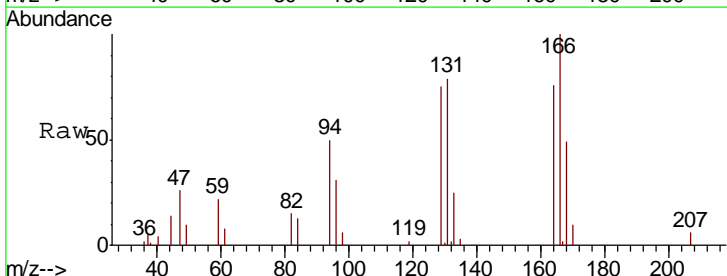
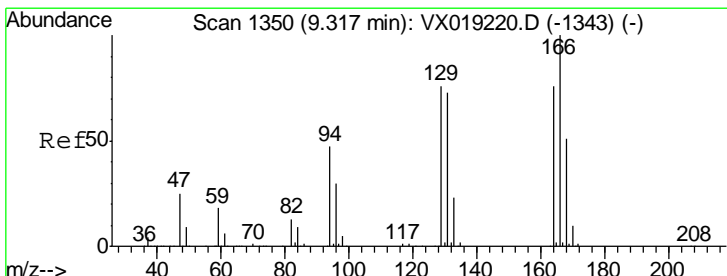
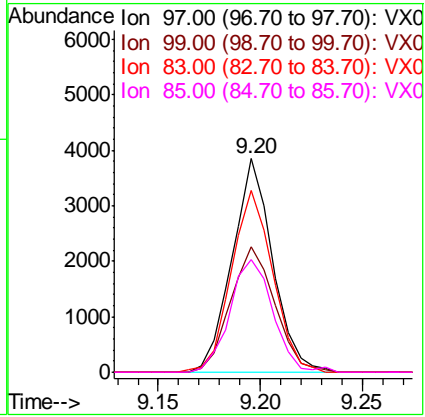




#45  
 1,1,2-Trichloroethane  
 Concen: 1.923 ug/L  
 RT: 9.20 min Scan# 1330  
 Delta R.T. 0.00 min  
 Lab File: VX019230.D  
 Acq: 03 Nov 2020 13:24

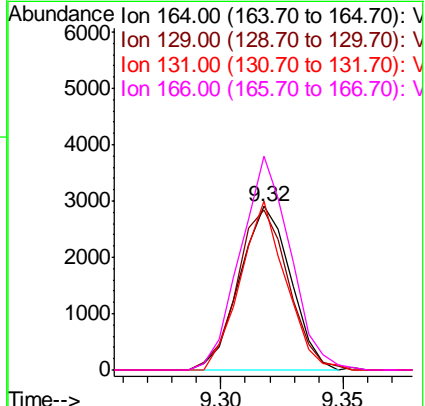
Instrument :  
 MSVOA\_X  
 ClientSampled :

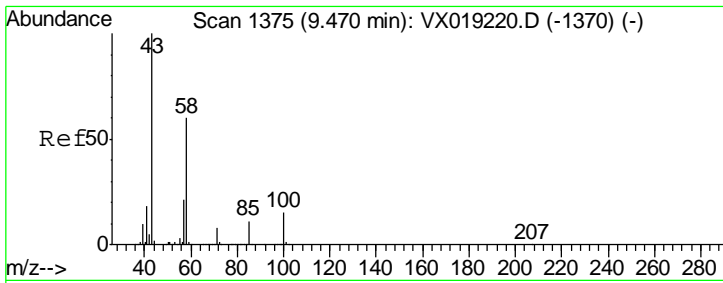
Tgt Ion	Resp	Lower	Upper
97	100		
99	58.5	43.3	80.3
83	84.8	59.4	110.4
85	52.5	38.7	71.9



#46  
 Tetrachloroethene  
 Concen: 1.807 ug/L  
 RT: 9.32 min Scan# 1350  
 Delta R.T. 0.00 min  
 Lab File: VX019230.D  
 Acq: 03 Nov 2020 13:24

Tgt Ion	Resp	Lower	Upper
164	100		
129	98.2	65.2	121.2
131	103.8	62.5	116.1
166	130.7	90.2	167.6

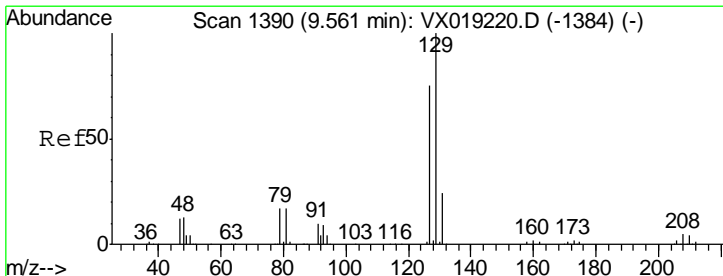
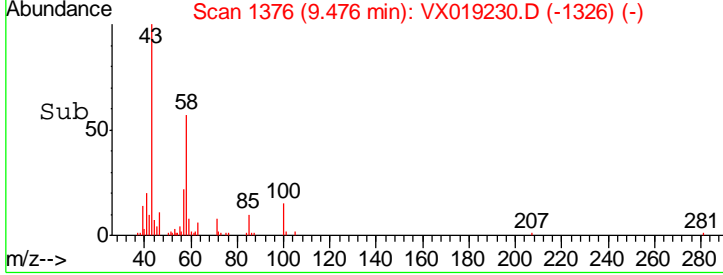
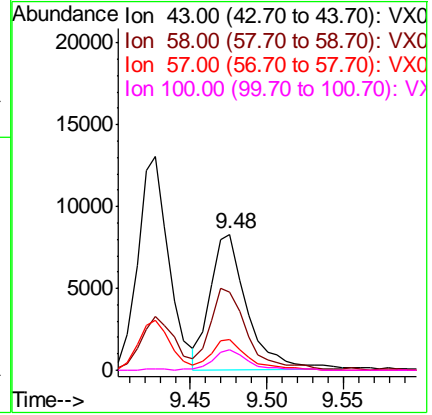
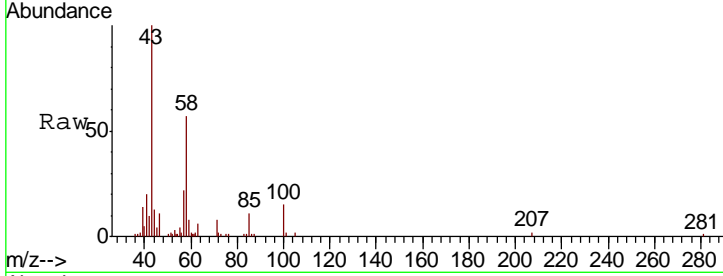




#48  
 2-Hexanone  
 Concen: 5.191 ug/L  
 RT: 9.48 min Scan# 1376  
 Delta R.T. 0.01 min  
 Lab File: VX019230.D  
 Acq: 03 Nov 2020 13:24

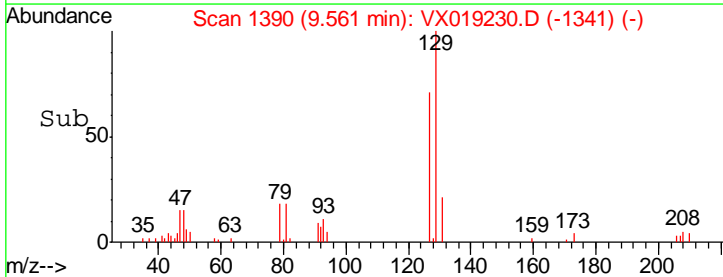
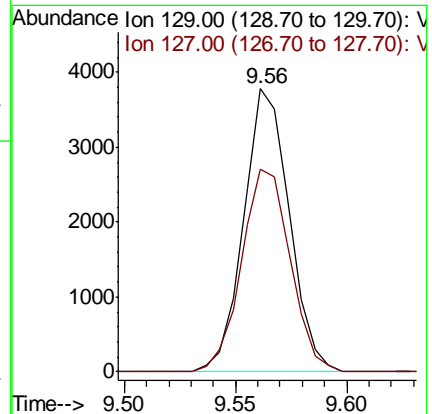
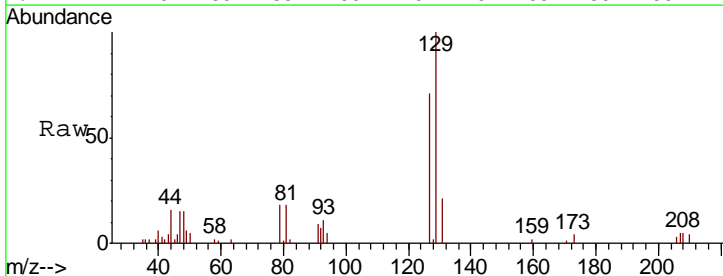
Instrument :  
 MSVOA\_X  
 ClientSampled :

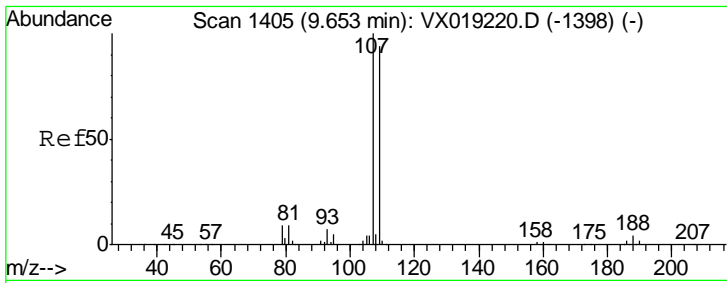
Tgt Ion	Resp	Lower	Upper
43	14059		
58	57.8	48.2	72.2
57	22.1	17.1	25.7
100	14.1	11.8	17.8



#49  
 Dibromochloromethane  
 Concen: 1.790 ug/L  
 RT: 9.56 min Scan# 1390  
 Delta R.T. 0.00 min  
 Lab File: VX019230.D  
 Acq: 03 Nov 2020 13:24

Tgt Ion	Resp	Lower	Upper
129	5407		
127	71.5	54.0	100.2

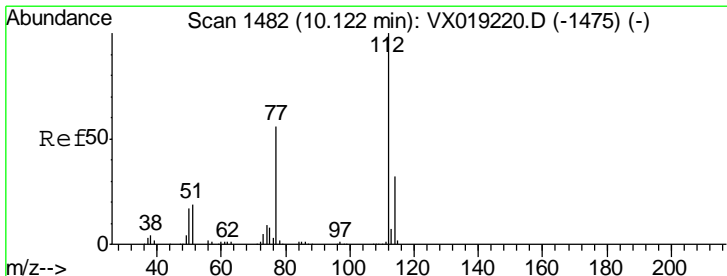
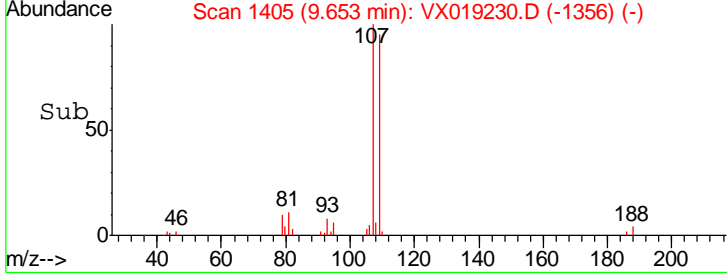
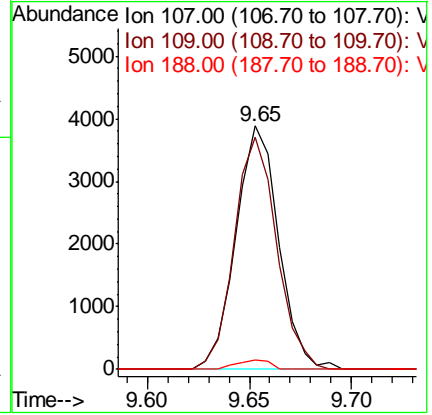
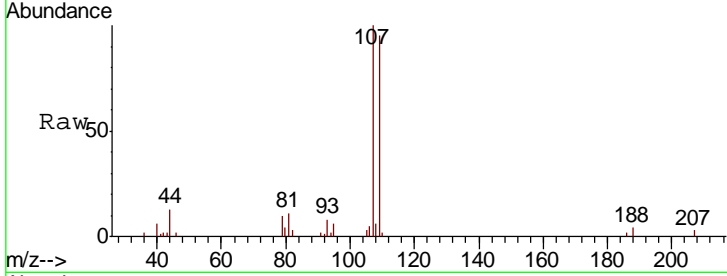




#50  
 1,2-Dibromoethane  
 Concen: 1.951 ug/L  
 RT: 9.65 min Scan# 1405  
 Delta R.T. 0.00 min  
 Lab File: VX019230.D  
 Acq: 03 Nov 2020 13:24

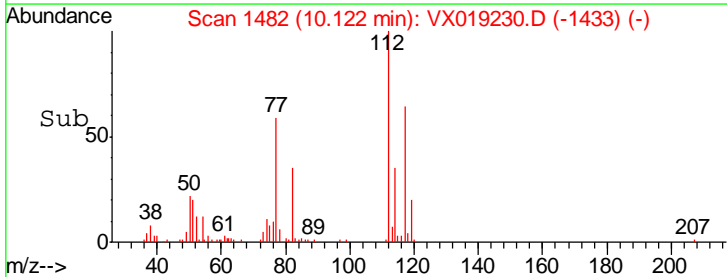
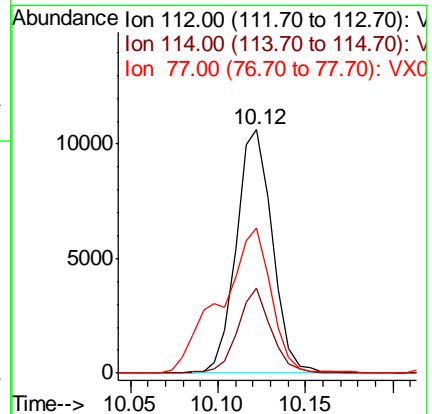
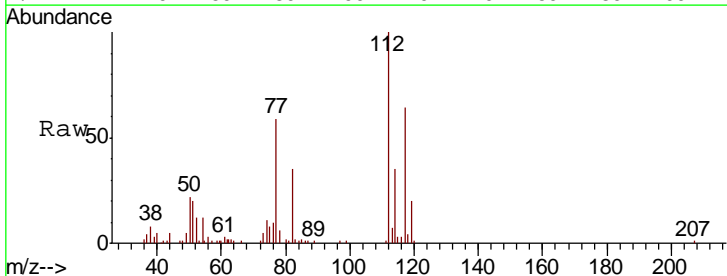
Instrument :  
 MSVOA\_X  
 ClientSampled :

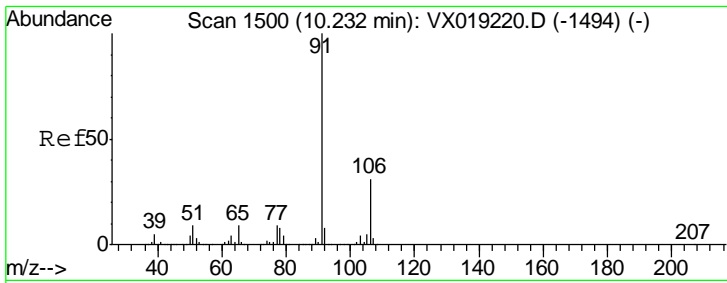
Tgt Ion	Resp	Lower	Upper
107	5635		
109	95.2	68.1	126.5
188	3.8	3.0	4.4



#51  
 Chlorobenzene  
 Concen: 1.986 ug/L  
 RT: 10.12 min Scan# 1482  
 Delta R.T. 0.00 min  
 Lab File: VX019230.D  
 Acq: 03 Nov 2020 13:24

Tgt Ion	Resp	Lower	Upper
112	15204		
114	34.7	22.2	41.2
77	59.3	46.2	69.4

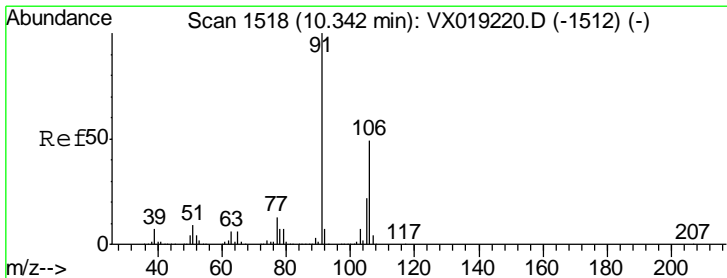
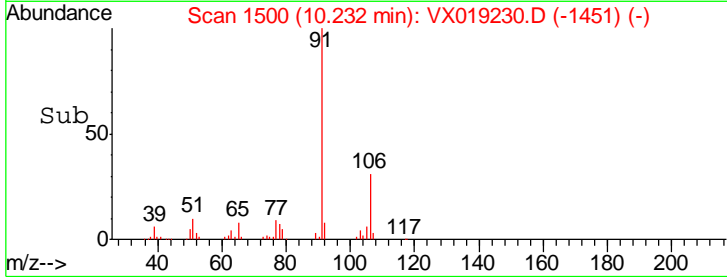
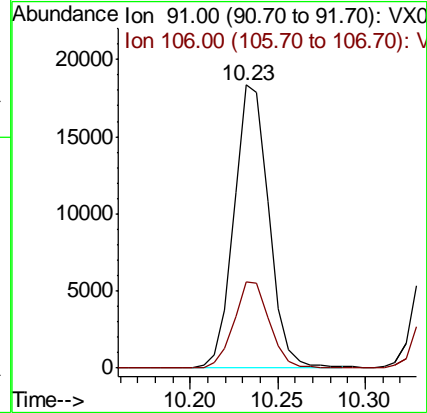
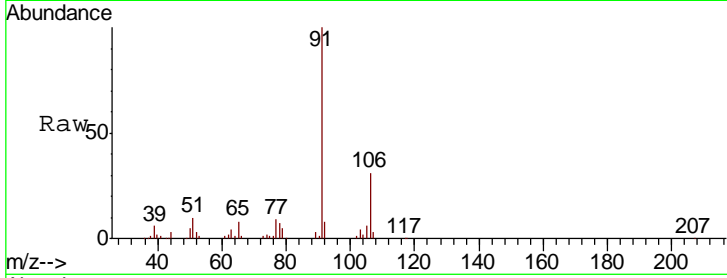




#52  
 Ethylbenzene  
 Concen: 1.908 ug/L  
 RT: 10.23 min Scan# 1500  
 Delta R.T. 0.00 min  
 Lab File: VX019230.D  
 Acq: 03 Nov 2020 13:24

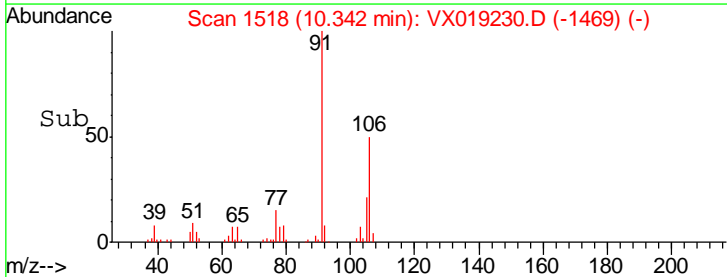
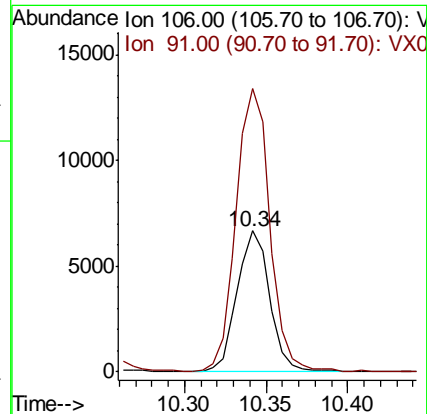
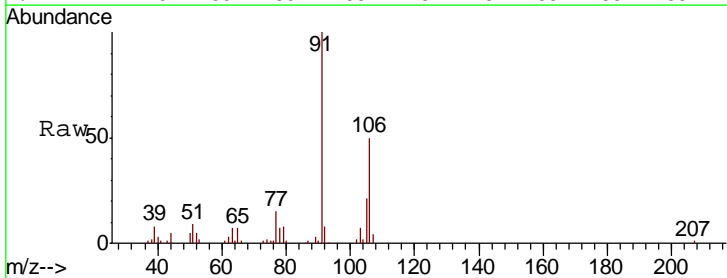
Instrument :  
 MSVOA\_X  
 ClientSampled :

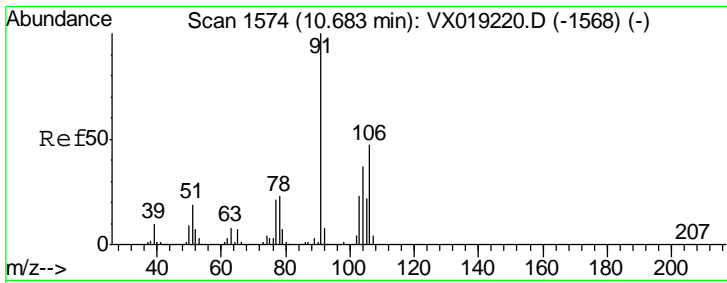
Tgt Ion: 91 Resp: 25388  
 Ion Ratio Lower Upper  
 91 100  
 106 30.6 21.5 39.9



#53  
 m,p-Xylene  
 Concen: 1.868 ug/L  
 RT: 10.34 min Scan# 1518  
 Delta R.T. 0.00 min  
 Lab File: VX019230.D  
 Acq: 03 Nov 2020 13:24

Tgt Ion: 106 Resp: 9336  
 Ion Ratio Lower Upper  
 106 100  
 91 200.9 144.2 267.8

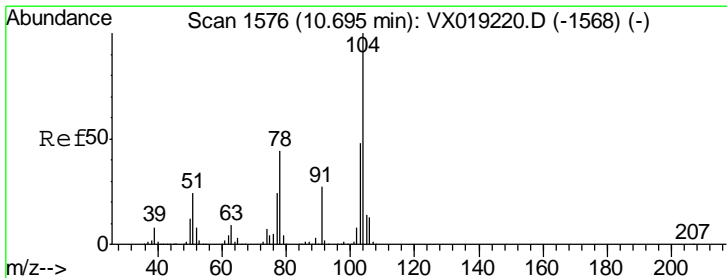
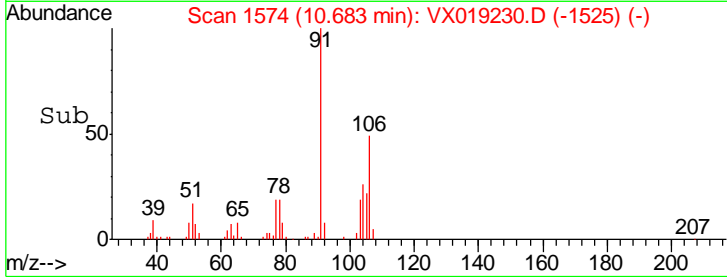
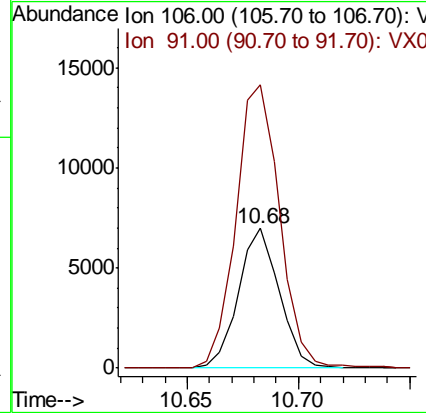
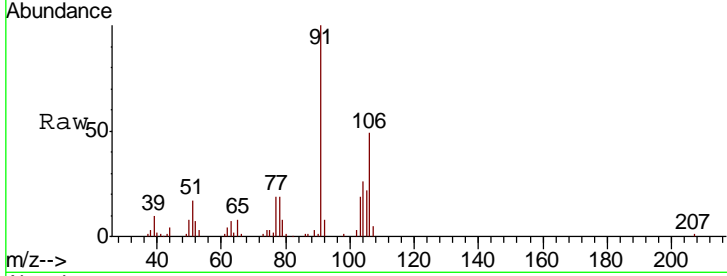




#54  
 o-Xylene  
 Concen: 1.844 ug/L  
 RT: 10.68 min Scan# 1574  
 Delta R.T. 0.00 min  
 Lab File: VX019230.D  
 Acq: 03 Nov 2020 13:24

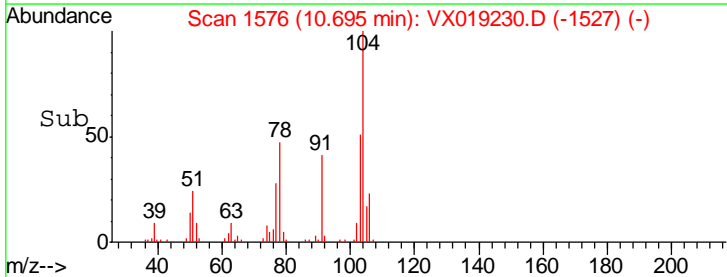
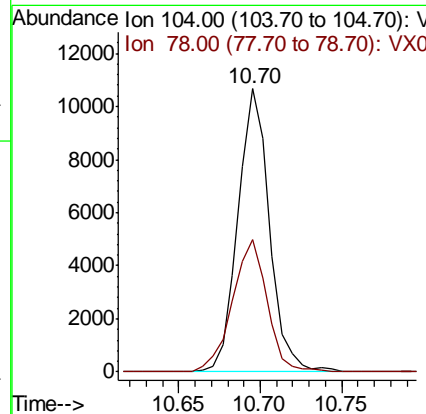
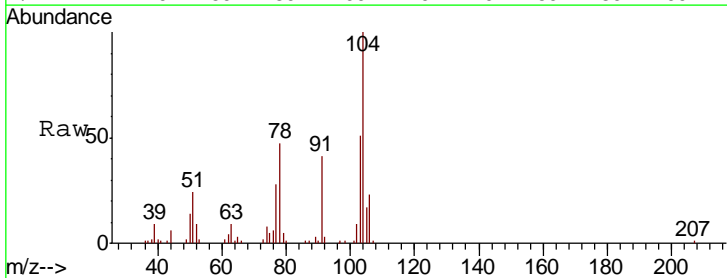
Instrument :  
 MSVOA\_X  
 ClientSampled :

Tgt Ion	Resp	Lower	Upper
106	8926		
106	100		
91	202.4	153.3	284.7

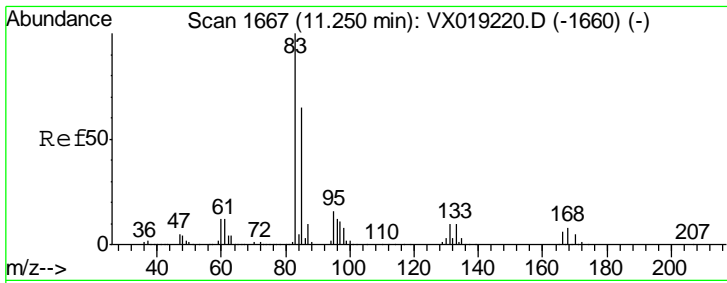


#55  
 Styrene  
 Concen: 1.760 ug/L  
 RT: 10.70 min Scan# 1576  
 Delta R.T. 0.00 min  
 Lab File: VX019230.D  
 Acq: 03 Nov 2020 13:24

Tgt Ion	Resp	Lower	Upper
104	14374		
104	100		
78	46.8	30.9	57.5



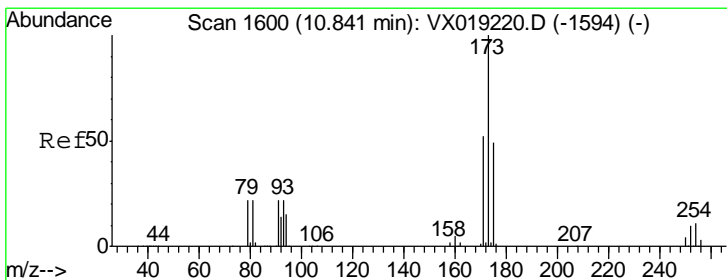
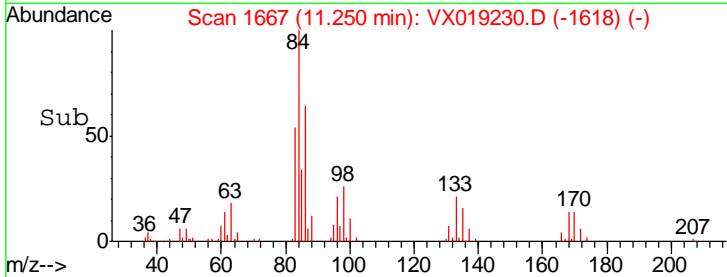
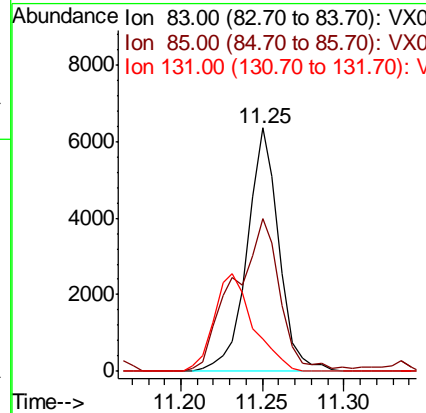
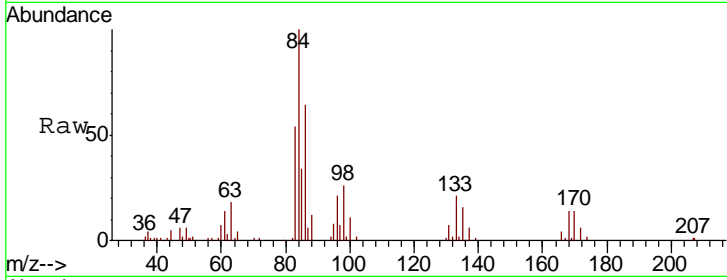




#57  
 1,1,2,2-Tetrachloroethane  
 Concen: 2.282 ug/L  
 RT: 11.25 min Scan# 1667  
 Delta R.T. 0.00 min  
 Lab File: VX019230.D  
 Acq: 03 Nov 2020 13:24

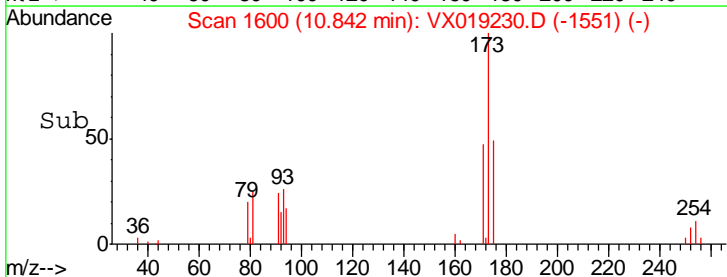
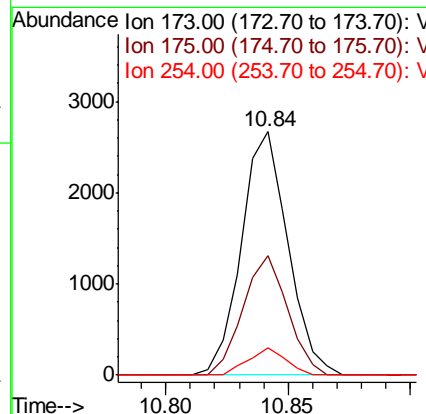
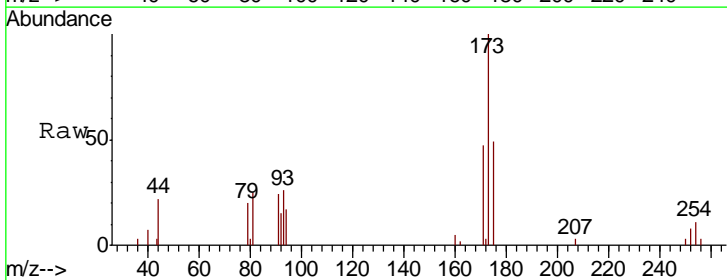
Instrument :  
 MSVOA\_X  
 ClientSampled :

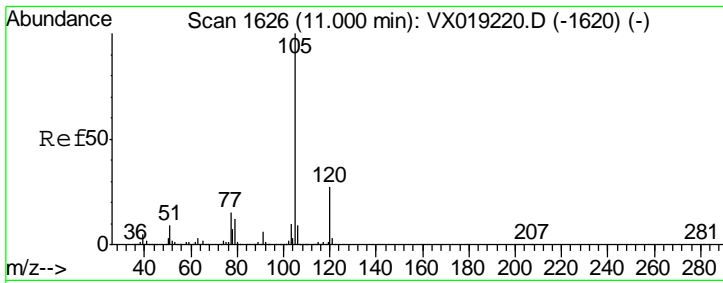
Tgt Ion	Resp	Lower	Upper
83	100		
85	62.8	45.9	85.3
131	13.1	7.7	11.5#



#59  
 Bromoform  
 Concen: 1.800 ug/L  
 RT: 10.84 min Scan# 1600  
 Delta R.T. 0.00 min  
 Lab File: VX019230.D  
 Acq: 03 Nov 2020 13:24

Tgt Ion	Resp	Lower	Upper
173	100		
175	47.0	39.7	59.5
254	9.2	8.2	12.4

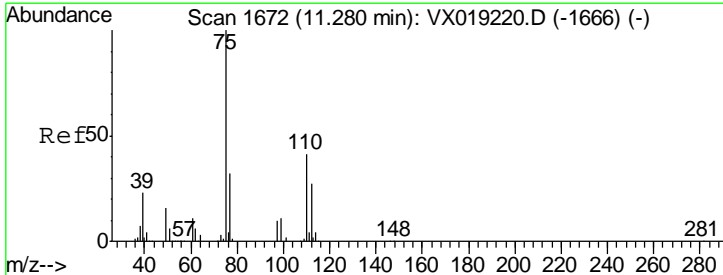
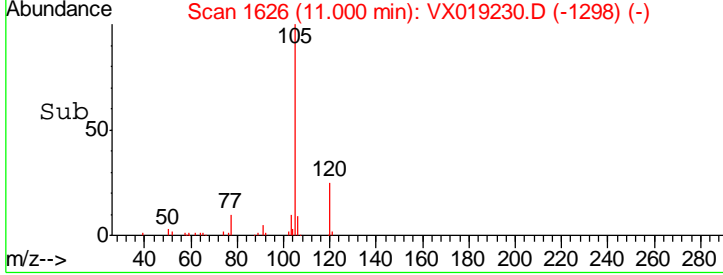
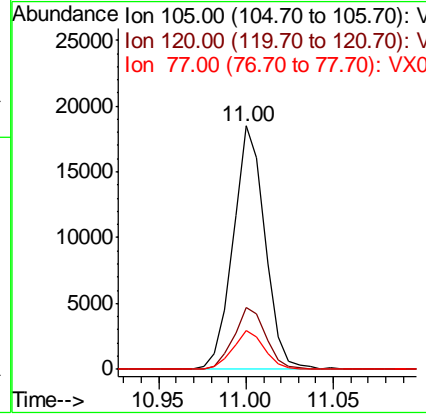
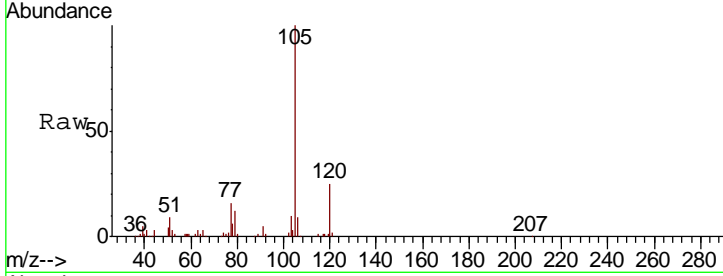




#60  
 Isopropylbenzene  
 Concen: 1.907 ug/L  
 RT: 11.00 min Scan# 1626  
 Delta R.T. 0.00 min  
 Lab File: VX019230.D  
 Acq: 03 Nov 2020 13:24

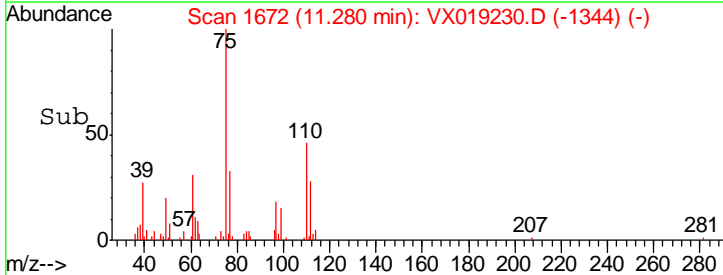
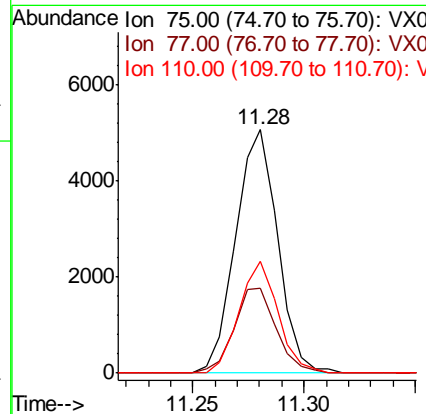
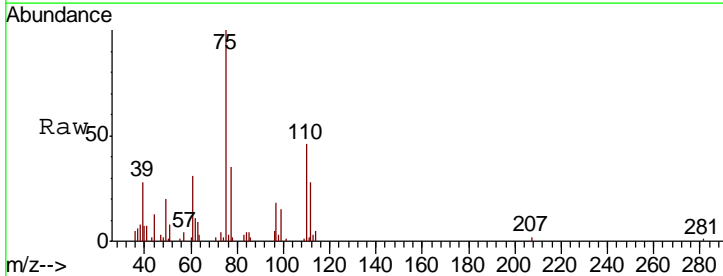
Instrument : MSVOA\_X  
 ClientSampled :

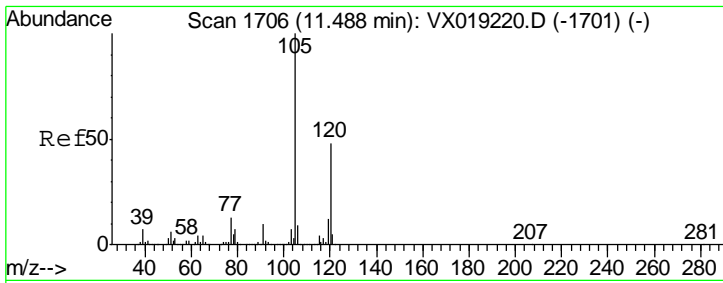
Tgt Ion	Resp	Lower	Upper
105	100		
120	25.4	21.1	31.7
77	16.0	12.6	19.0



#61  
 1,2,3-Trichloropropane  
 Concen: 2.155 ug/L  
 RT: 11.28 min Scan# 1672  
 Delta R.T. 0.00 min  
 Lab File: VX019230.D  
 Acq: 03 Nov 2020 13:24

Tgt Ion	Resp	Lower	Upper
75	100		
77	35.0	25.4	38.0
110	42.4	32.2	48.2

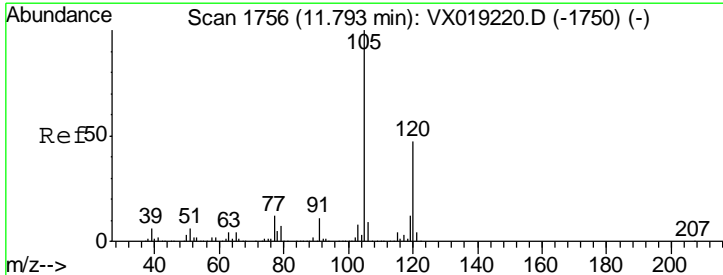
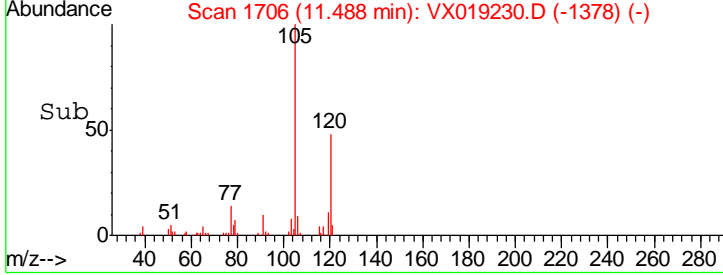
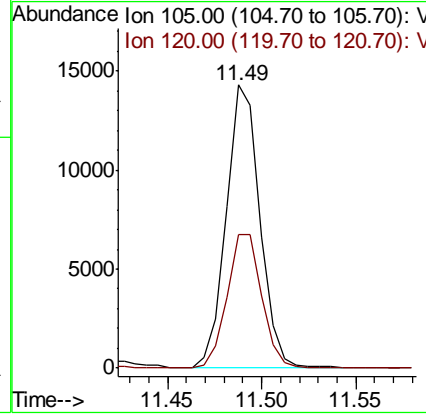
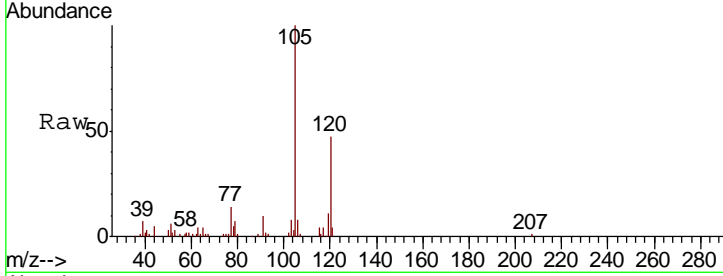




#62  
 1,3,5-Trimethylbenzene  
 Concen: 1.755 ug/L  
 RT: 11.49 min Scan# 1706  
 Delta R.T. 0.00 min  
 Lab File: VX019230.D  
 Acq: 03 Nov 2020 13:24

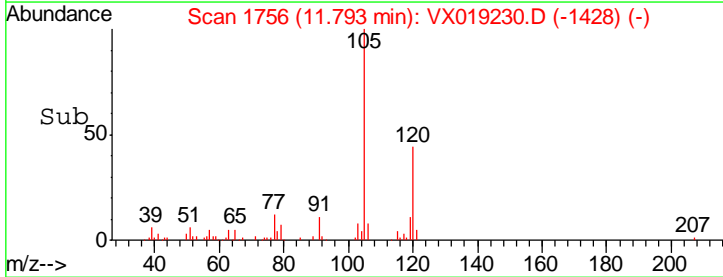
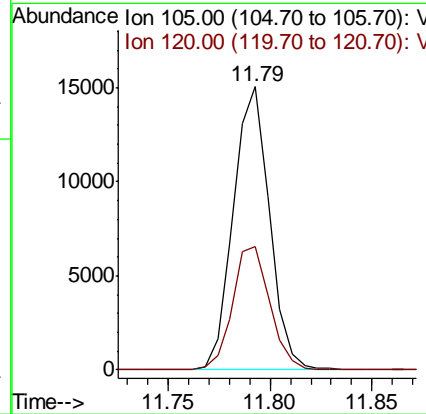
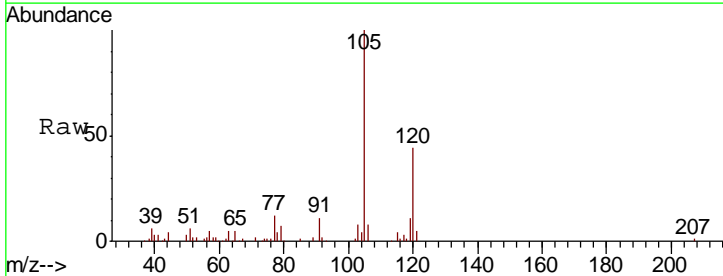
Instrument : MSVOA\_X  
 ClientSampled :

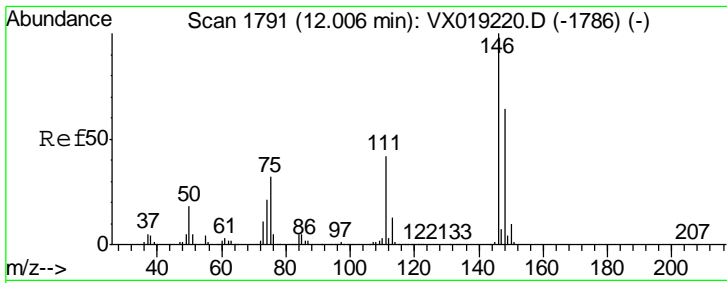
Tgt Ion	Resp	Lower	Upper
105	17716		
120	48.9	38.8	58.2



#63  
 1,2,4-Trimethylbenzene  
 Concen: 1.932 ug/L  
 RT: 11.79 min Scan# 1756  
 Delta R.T. 0.00 min  
 Lab File: VX019230.D  
 Acq: 03 Nov 2020 13:24

Tgt Ion	Resp	Lower	Upper
105	18447		
120	44.8	36.0	54.0

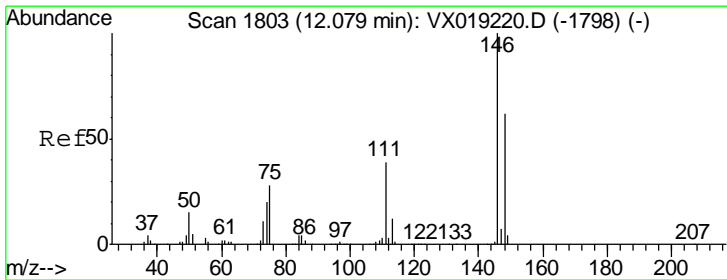
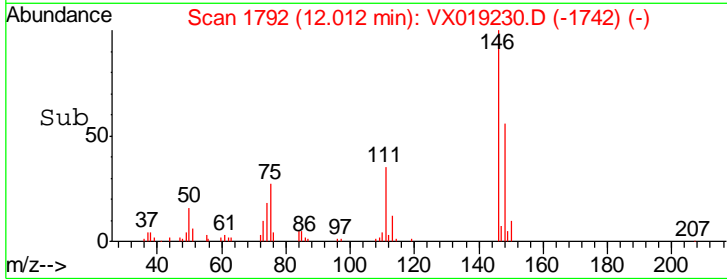
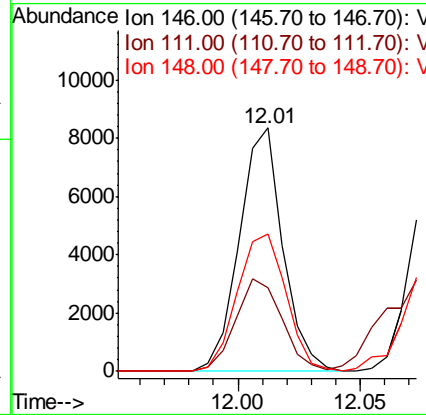
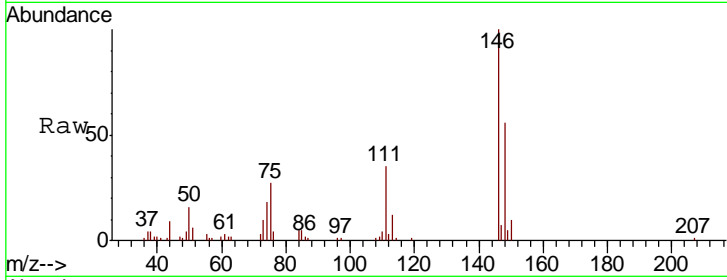




#64  
 1,3-Dichlorobenzene  
 Concen: 1.957 ug/L  
 RT: 12.01 min Scan# 1792  
 Delta R.T. 0.01 min  
 Lab File: VX019230.D  
 Acq: 03 Nov 2020 13:24

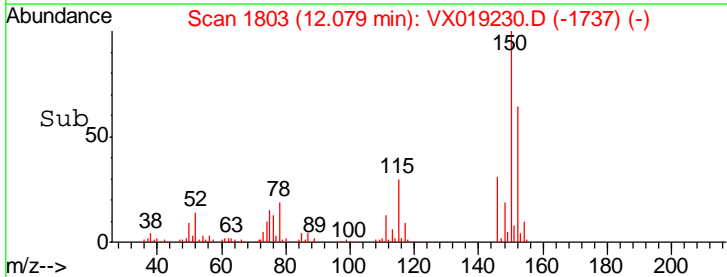
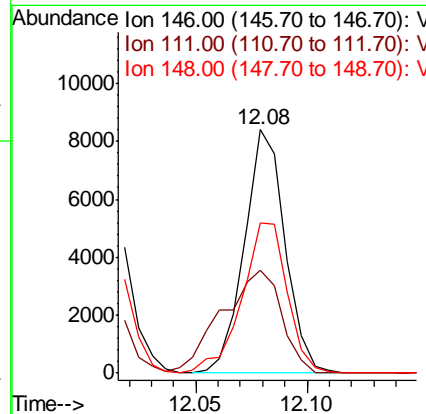
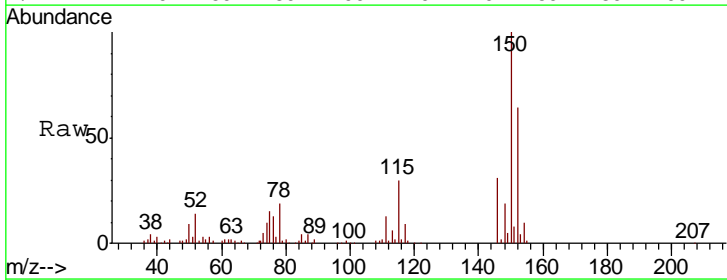
Instrument :  
 MSVOA\_X  
 ClientSampled :

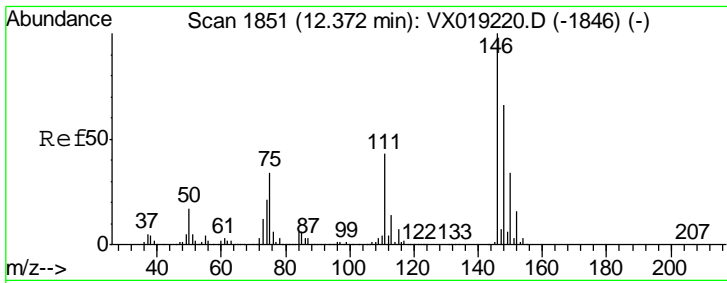
Tgt Ion	Resp	Lower	Upper
146	10366		
111	34.6	29.7	55.1
148	56.3	44.5	82.7



#65  
 1,4-Dichlorobenzene  
 Concen: 1.995 ug/L  
 RT: 12.08 min Scan# 1803  
 Delta R.T. 0.00 min  
 Lab File: VX019230.D  
 Acq: 03 Nov 2020 13:24

Tgt Ion	Resp	Lower	Upper
146	10723		
111	42.3	28.1	52.3
148	61.7	43.8	81.4

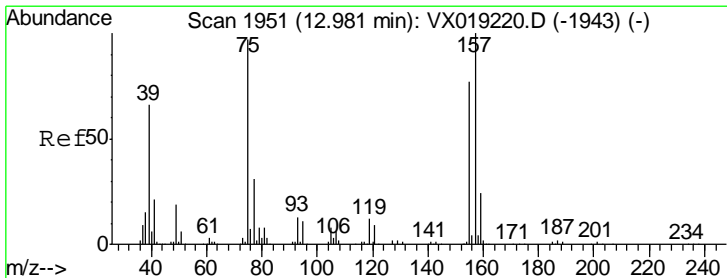
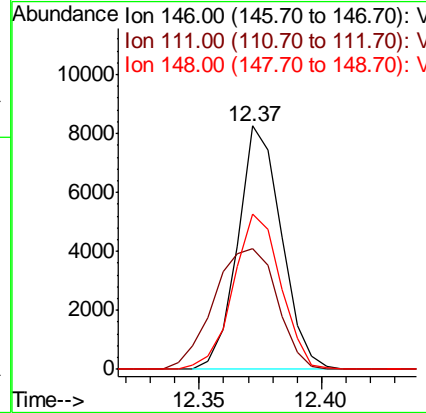
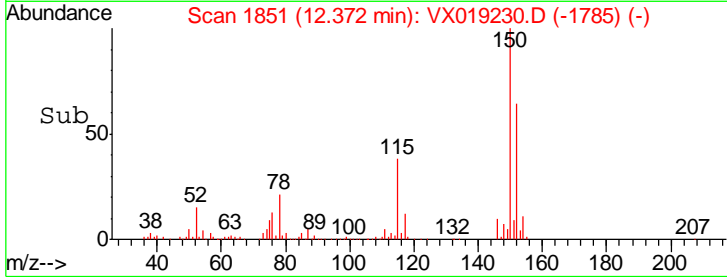
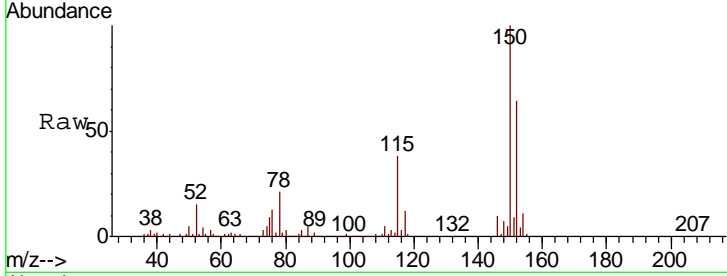




#67  
 1,2-Dichlorobenzene  
 Concen: 1.994 ug/L  
 RT: 12.37 min Scan# 1851  
 Delta R.T. 0.00 min  
 Lab File: VX019230.D  
 Acq: 03 Nov 2020 13:24

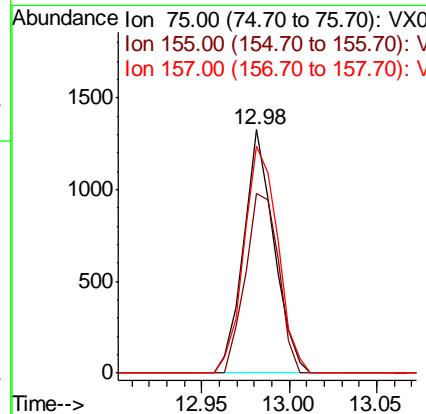
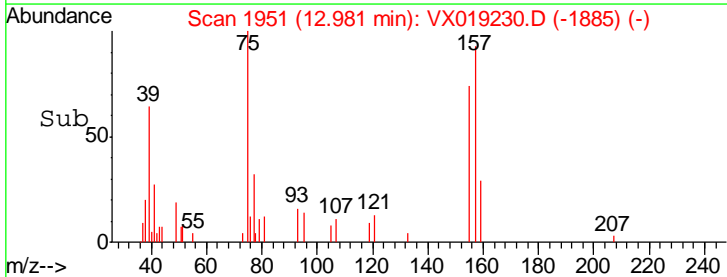
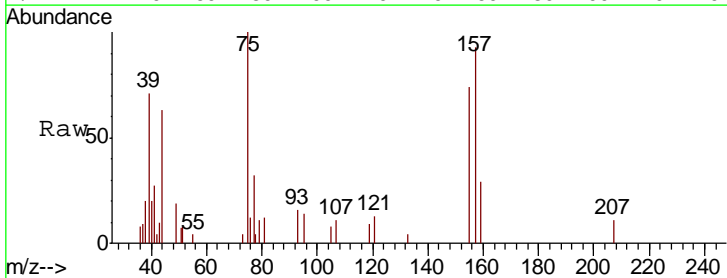
Instrument :  
 MSVOA\_X  
 ClientSampled :

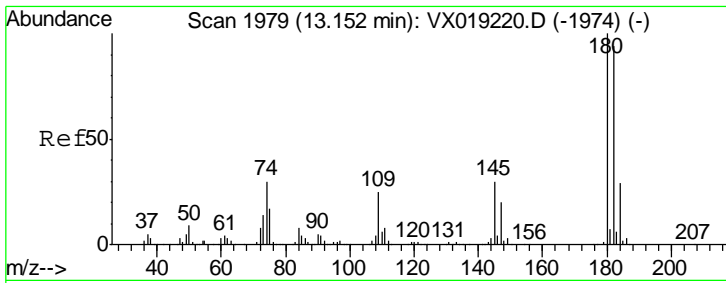
Tgt Ion	Resp	Lower	Upper
146	10230		
111	49.8	35.9	53.9
148	64.0	52.2	78.4



#68  
 1,2-Dibromo-3-chloropropane  
 Concen: 1.920 ug/L  
 RT: 12.98 min Scan# 1951  
 Delta R.T. 0.00 min  
 Lab File: VX019230.D  
 Acq: 03 Nov 2020 13:24

Tgt Ion	Resp	Lower	Upper
75	1610		
155	73.8	65.8	98.8
157	93.4	82.6	123.8



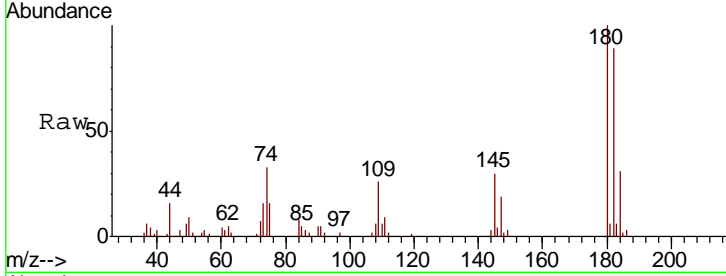


#69  
 1,3,5-Trichlorobenzene  
 Concen: 1.733 ug/L  
 RT: 13.15 min Scan# 1979  
 Delta R.T. 0.00 min  
 Lab File: VX019230.D  
 Acq: 03 Nov 2020 13:24

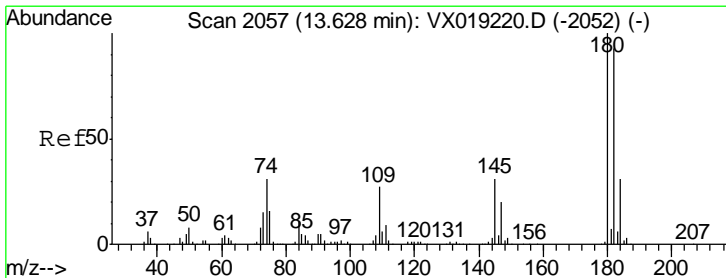
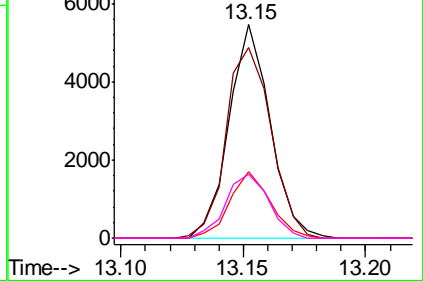
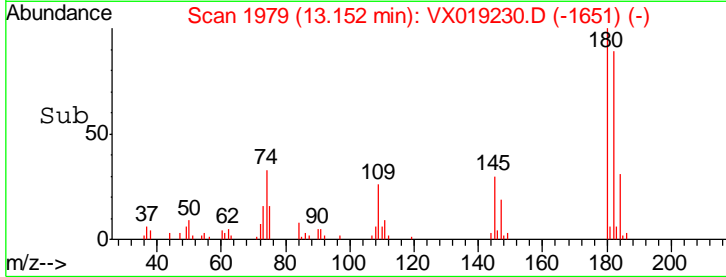
Instrument :  
 MSVOA\_X  
 ClientSampled :

Tgt Ion:180 Resp: 6430

Ion	Ratio	Lower	Upper
180	100		
182	97.2	78.8	118.2
184	30.6	25.2	37.8
145	31.7	25.8	38.6



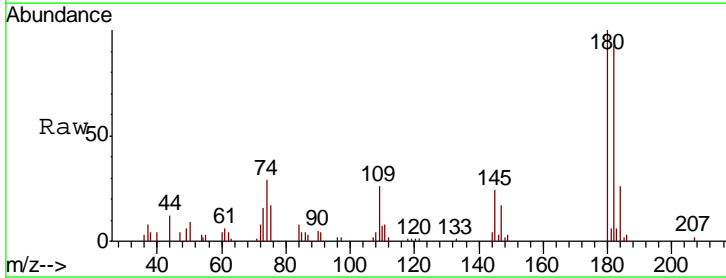
Abundance Ion 180.00 (179.70 to 180.70): V  
 Ion 182.00 (181.70 to 182.70): V  
 Ion 184.00 (183.70 to 184.70): V  
 Ion 145.00 (144.70 to 145.70): V



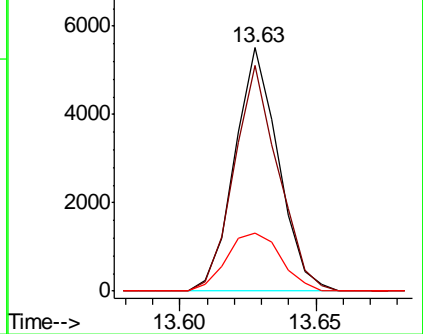
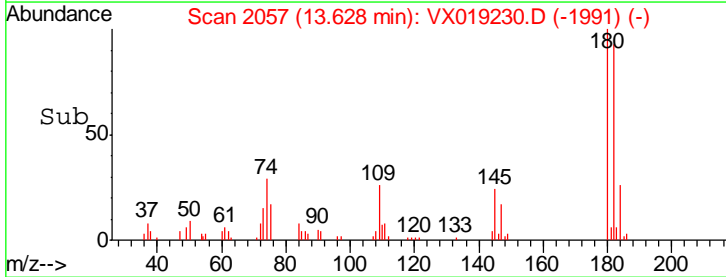
#70  
 1,2,4-trichlorobenzene  
 Concen: 1.798 ug/L  
 RT: 13.63 min Scan# 2057  
 Delta R.T. 0.00 min  
 Lab File: VX019230.D  
 Acq: 03 Nov 2020 13:24

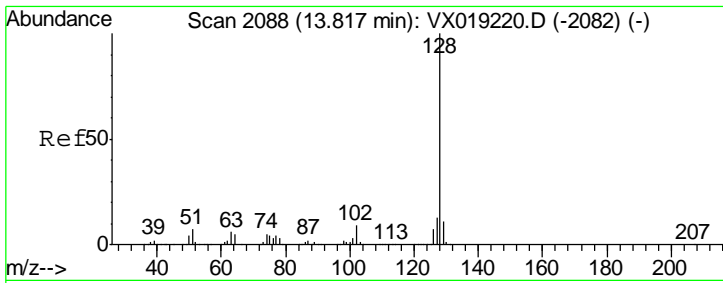
Tgt Ion:180 Resp: 6147

Ion	Ratio	Lower	Upper
180	100		
182	93.5	74.6	111.8
145	29.7	25.4	38.0



Abundance Ion 180.00 (179.70 to 180.70): V  
 Ion 182.00 (181.70 to 182.70): V  
 Ion 145.00 (144.70 to 145.70): V

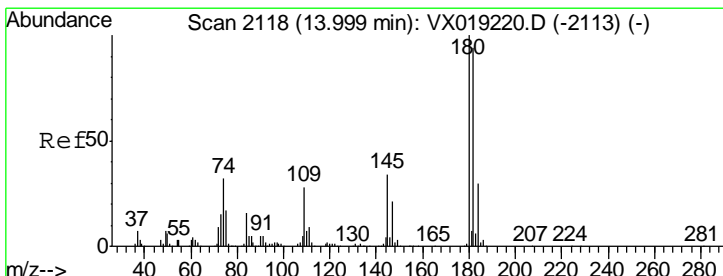
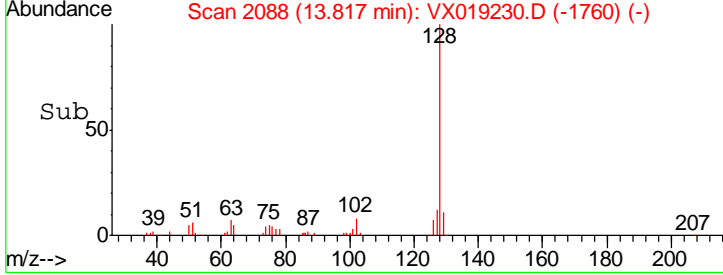
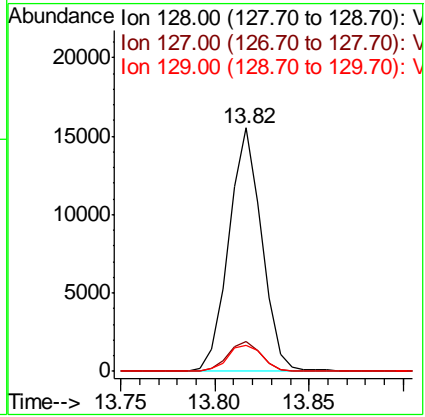
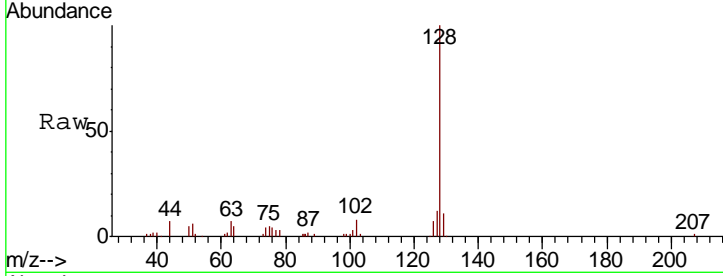




#71  
 Naphthalene  
 Concen: 1.703 ug/L  
 RT: 13.82 min Scan# 2088  
 Delta R.T. 0.00 min  
 Lab File: VX019230.D  
 Acq: 03 Nov 2020 13:24

Instrument : MSVOA\_X  
 ClientSampled :

Tgt Ion	Resp	Lower	Upper
128	18824		
127	12.3	10.1	15.1
129	11.3	8.5	12.7



#72  
 1,2,3-Trichlorobenzene  
 Concen: 1.681 ug/L  
 RT: 14.00 min Scan# 2118  
 Delta R.T. 0.00 min  
 Lab File: VX019230.D  
 Acq: 03 Nov 2020 13:24

Tgt Ion	Resp	Lower	Upper
180	5623		
182	102.7	75.3	112.9
145	35.2	27.1	40.7

