

Data Path : Z:\voasrv\HPCHEM1\MSVOA_X\Data\VX110325\
 Data File : VX048446.D
 Acq On : 03 Nov 2025 09:40
 Operator : JC/MD
 Sample : VX1103MBL01
 Misc : 5.00g/10mL/100uL/5.0mL/MSVOA_X/MEOH
 ALS Vial : 3 Sample Multiplier: 1

Instrument :
 MSVOA_X
 ClientSampleId :

Quant Time: Nov 04 00:08:29 2025
 Quant Method : Z:\voasrv\HPCHEM1\MSVOA_X\Method\82X102925W.M
 Quant Title : SW846 8260
 QLast Update : Thu Oct 30 02:37:17 2025
 Response via : Initial Calibration

Compound	R.T.	QIon	Response	Conc	Units	Dev(Min)

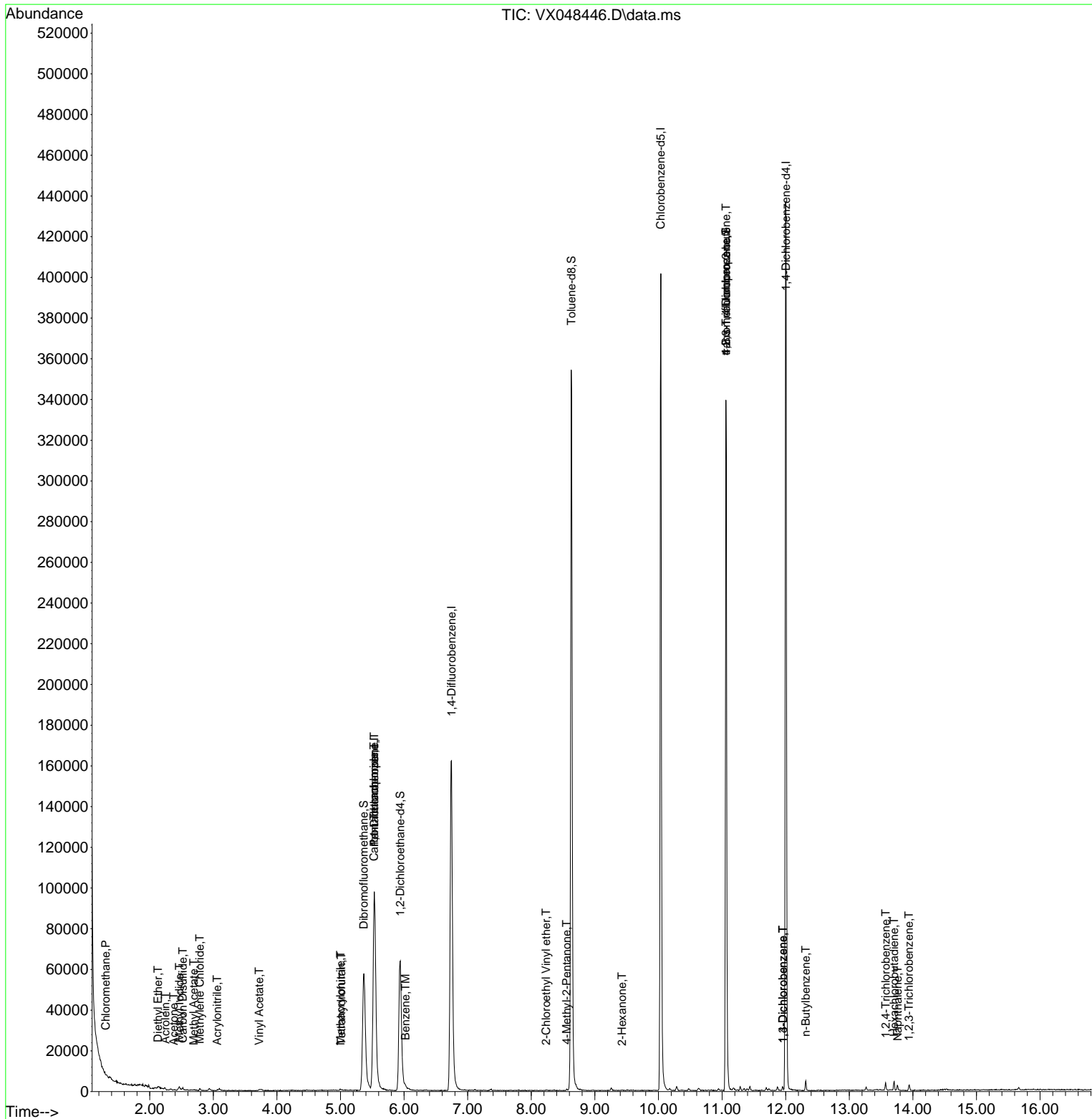
Internal Standards						
1) Pentafluorobenzene	5.531	168	104125	50.000	ug/l	0.00
34) 1,4-Difluorobenzene	6.745	114	177727	50.000	ug/l	0.00
63) Chlorobenzene-d5	10.037	117	181874	50.000	ug/l	0.00
72) 1,4-Dichlorobenzene-d4	12.006	152	90694	50.000	ug/l	0.00
System Monitoring Compounds						
33) 1,2-Dichloroethane-d4	5.940	65	70404	47.015	ug/l	0.00
Spiked Amount	50.000	Range 78 - 117	Recovery	=	94.040%	
35) Dibromofluoromethane	5.367	113	57634	56.878	ug/l	0.00
Spiked Amount	50.000	Range 75 - 124	Recovery	=	113.760%	
50) Toluene-d8	8.628	98	219202	49.007	ug/l	0.00
Spiked Amount	50.000	Range 92 - 112	Recovery	=	98.020%	
62) 4-Bromofluorobenzene	11.061	95	92573	55.326	ug/l	0.00
Spiked Amount	50.000	Range 83 - 123	Recovery	=	110.660%	
Target Compounds						
						Qvalue
3) Chloromethane	1.307	50	146	0.244	ug/l #	42
8) Diethyl Ether	2.130	74	224	0.292	ug/l	84
10) Methyl Iodide	2.465	142	2231	0.465	ug/l	88
13) Acrolein	2.245	56	152	0.635	ug/l #	51
15) Acrylonitrile	3.062	53	160	0.307	ug/l #	78
16) Acetone	2.380	43	636	1.874	ug/l #	45
17) Carbon Disulfide	2.520	76	1165	0.335	ug/l	97
18) Methyl Acetate	2.690	43	401	0.353	ug/l #	54
20) Methylene Chloride	2.788	84	305	0.233	ug/l #	77
23) Vinyl Acetate	3.721	43	1409	0.493	ug/l #	73
29) Tetrahydrofuran	5.013	42	453	1.173	ug/l #	37
36) 1,1-Dichloropropene	5.531	75	7704	4.527	ug/l #	46
38) Carbon Tetrachloride	5.525	117	10004	5.092	ug/l #	16
40) Benzene	6.019	78	1044	0.201	ug/l #	51
41) Methacrylonitrile	5.001	41	354	0.485	ug/l #	46
51) 4-Methyl-2-Pentanone	8.555	43	425	0.319	ug/l	95
58) 2-Chloroethyl Vinyl ether	8.232	63	159	9.444	ug/l #	47
59) 2-Hexanone	9.427	43	320	0.369	ug/l #	35
76) 1,2,3-Trichloropropane	11.061	75	51942	39.824	ug/l #	33
81) trans-1,4-Dichloro-2-b...	11.061	75	51942	137.814	ug/l #	10
87) 1,3-Dichlorobenzene	11.957	146	667	0.211	ug/l	93
88) 1,4-Dichlorobenzene	11.957	146	667	0.207	ug/l	93
89) n-Butylbenzene	12.317	91	1537	0.278	ug/l	88
93) 1,2,4-Trichlorobenzene	13.573	180	1113	0.550	ug/l	88
94) Hexachlorobutadiene	13.707	225	781	0.920	ug/l	82
95) Naphthalene	13.762	128	2219	0.434	ug/l #	86
96) 1,2,3-Trichlorobenzene	13.938	180	977	0.532	ug/l	92

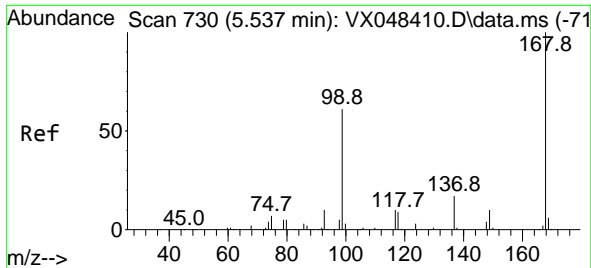
(#) = qualifier out of range (m) = manual integration (+) = signals summed

Data Path : Z:\voasrv\HPCHEM1\MSVOA_X\Data\VX110325\
 Data File : VX048446.D
 Acq On : 03 Nov 2025 09:40
 Operator : JC/MD
 Sample : VX1103MBL01
 Misc : 5.00g/10mL/100uL/5.0mL/MSVOA_X/MEOH
 ALS Vial : 3 Sample Multiplier: 1

Instrument :
 MSVOA_X
 ClientSampleId :

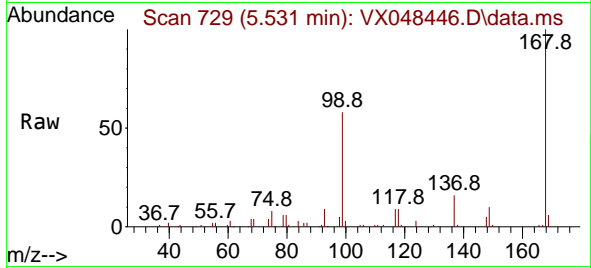
Quant Time: Nov 04 00:08:29 2025
 Quant Method : Z:\voasrv\HPCHEM1\MSVOA_X\Method\82X102925W.M
 Quant Title : SW846 8260
 QLast Update : Thu Oct 30 02:37:17 2025
 Response via : Initial Calibration



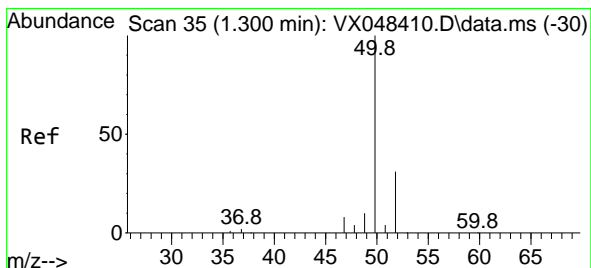
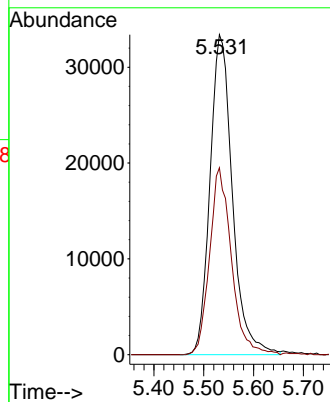
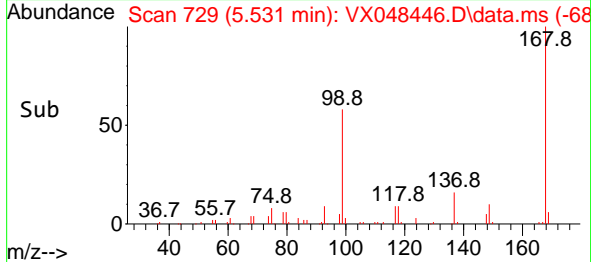


#1
 Pentafluorobenzene
 Concen: 50.000 ug/l
 RT: 5.531 min Scan# 71
 Delta R.T. -0.006 min
 Lab File: VX048446.D
 Acq: 03 Nov 2025 09:40

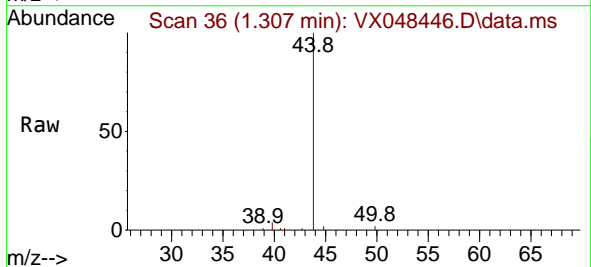
Instrument :
 MSVOA_X
 ClientSampleId :



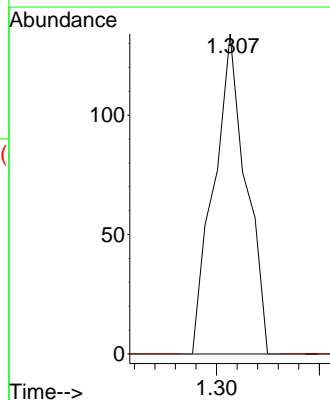
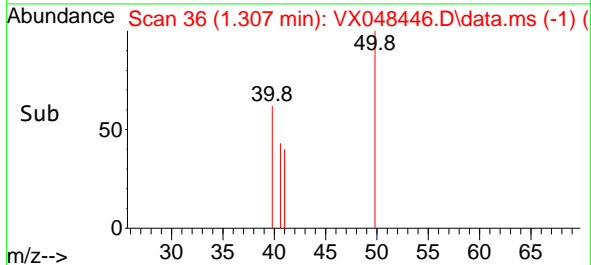
Tgt Ion:168 Resp: 104125
 Ion Ratio Lower Upper
 168 100
 99 58.4 46.4 69.6

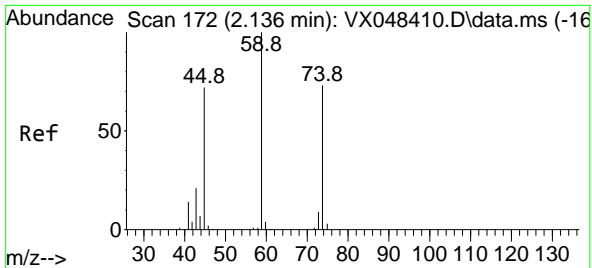


#3
 Chloromethane
 Concen: 0.244 ug/l
 RT: 1.307 min Scan# 36
 Delta R.T. 0.006 min
 Lab File: VX048446.D
 Acq: 03 Nov 2025 09:40



Tgt Ion: 50 Resp: 146
 Ion Ratio Lower Upper
 50 100
 52 0.0 25.9 38.9#



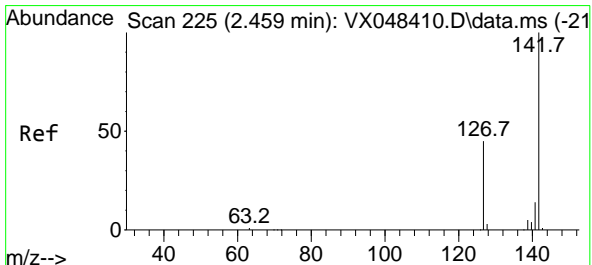
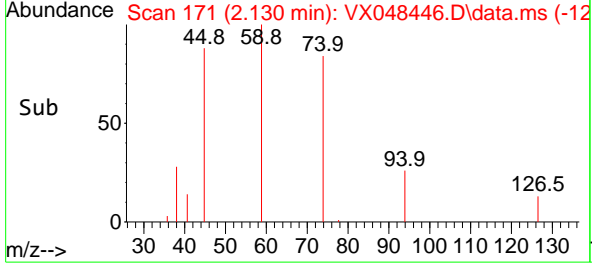
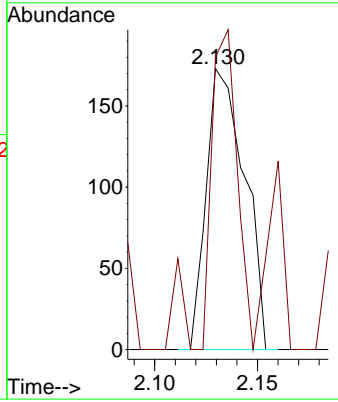
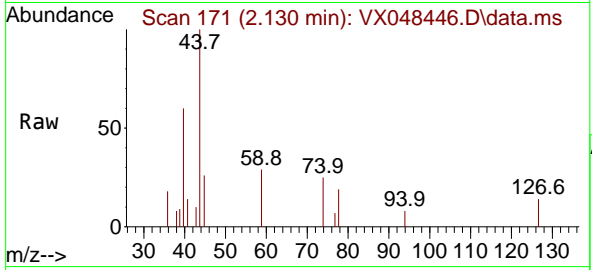


#8
 Diethyl Ether
 Concen: 0.292 ug/l
 RT: 2.130 min Scan# 11
 Delta R.T. -0.006 min
 Lab File: VX048446.D
 Acq: 03 Nov 2025 09:40

Instrument : MSVOA_X
 ClientSampleId :

Tgt Ion: 74 Resp: 224

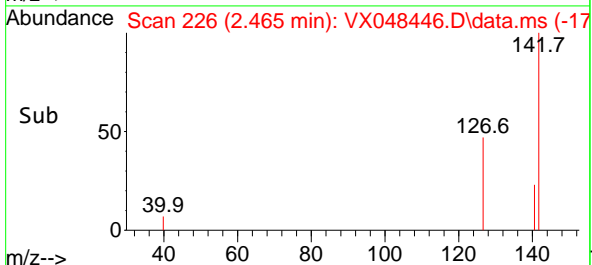
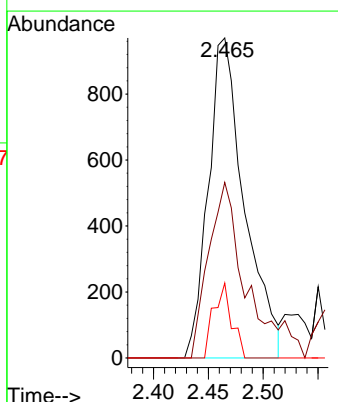
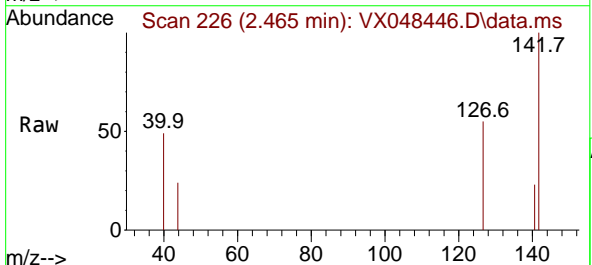
Ion	Ratio	Lower	Upper
74	100		
45	83.9	50.0	149.8

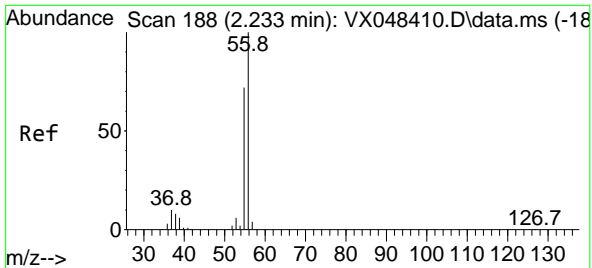


#10
 Methyl Iodide
 Concen: 0.465 ug/l
 RT: 2.465 min Scan# 226
 Delta R.T. 0.006 min
 Lab File: VX048446.D
 Acq: 03 Nov 2025 09:40

Tgt Ion: 142 Resp: 2231

Ion	Ratio	Lower	Upper
142	100		
127	57.6	38.5	57.7
141	11.7	11.6	17.4

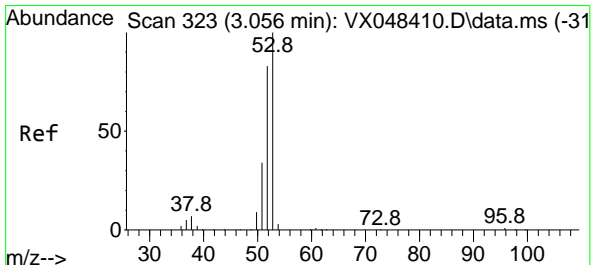
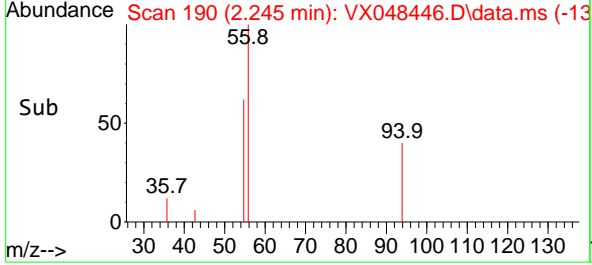
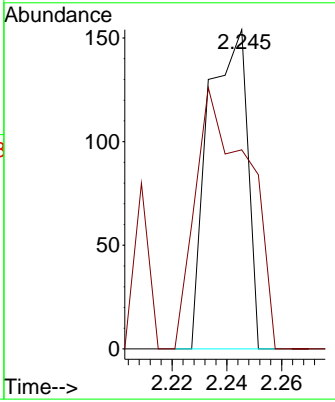
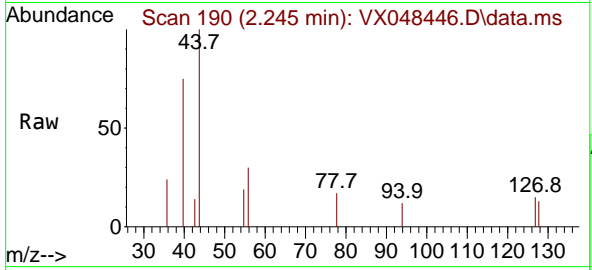




#13
 Acrolein
 Concen: 0.635 ug/l
 RT: 2.245 min Scan# 13
 Delta R.T. 0.012 min
 Lab File: VX048446.D
 Acq: 03 Nov 2025 09:40

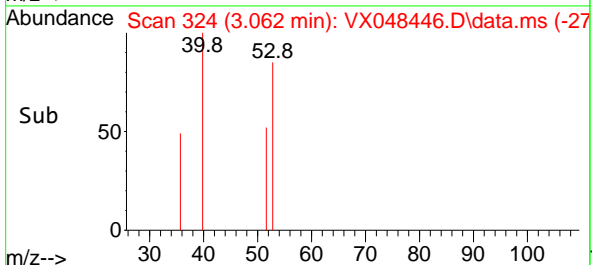
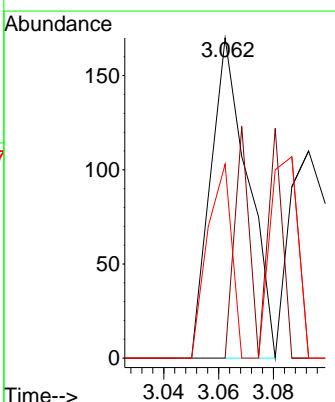
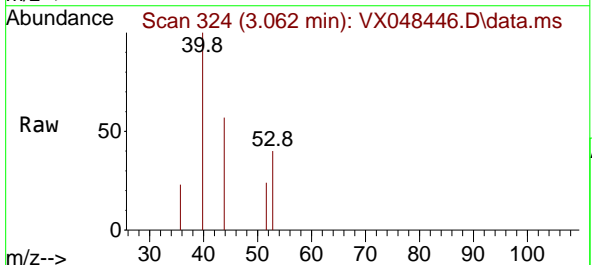
Instrument : MSVOA_X
 ClientSampleId :

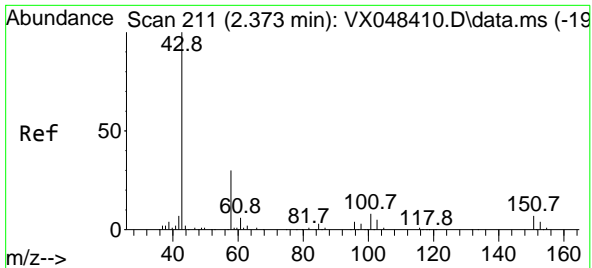
Tgt Ion: 56 Resp: 152
 Ion Ratio Lower Upper
 56 100
 55 110.5 56.1 84.1#



#15
 Acrylonitrile
 Concen: 0.307 ug/l
 RT: 3.062 min Scan# 324
 Delta R.T. 0.006 min
 Lab File: VX048446.D
 Acq: 03 Nov 2025 09:40

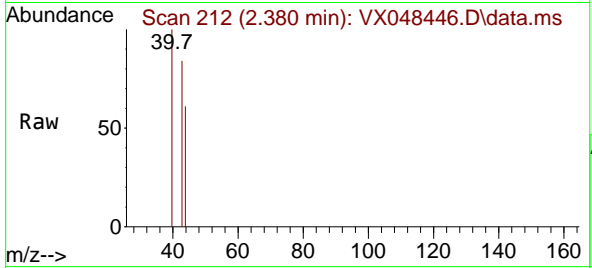
Tgt Ion: 53 Resp: 160
 Ion Ratio Lower Upper
 53 100
 52 56.3 66.1 99.1#
 51 39.4 29.0 43.4



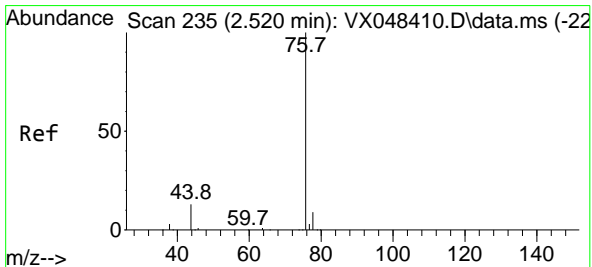
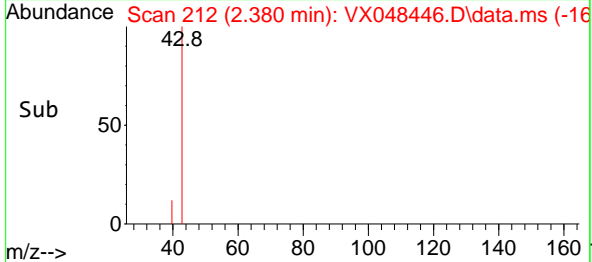
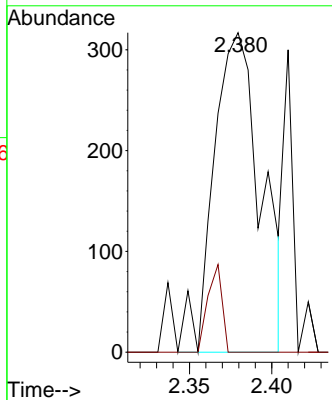


#16
 Acetone
 Concen: 1.874 ug/l
 RT: 2.380 min Scan# 211
 Delta R.T. 0.006 min
 Lab File: VX048446.D
 Acq: 03 Nov 2025 09:40

Instrument : MSVOA_X
 ClientSampleId :

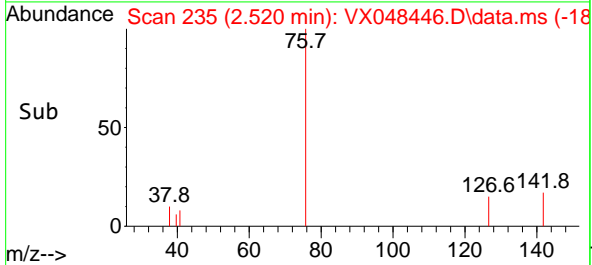
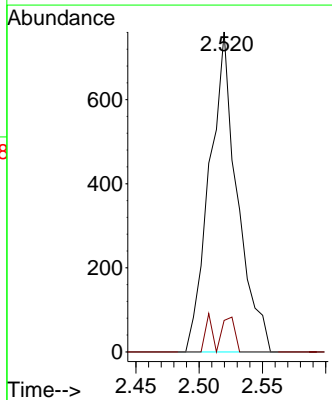
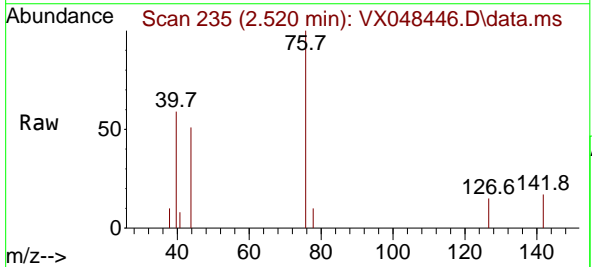


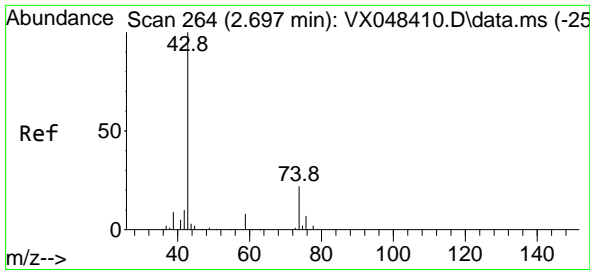
Tgt Ion: 43 Resp: 636
 Ion Ratio Lower Upper
 43 100
 58 0.0 23.4 35.2#



#17
 Carbon Disulfide
 Concen: 0.335 ug/l
 RT: 2.520 min Scan# 235
 Delta R.T. 0.000 min
 Lab File: VX048446.D
 Acq: 03 Nov 2025 09:40

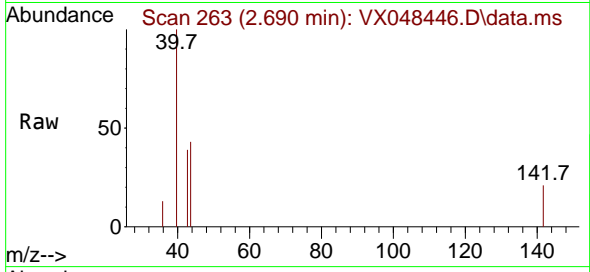
Tgt Ion: 76 Resp: 1165
 Ion Ratio Lower Upper
 76 100
 78 9.9 7.1 10.7



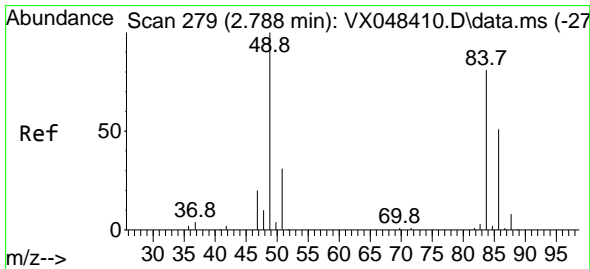
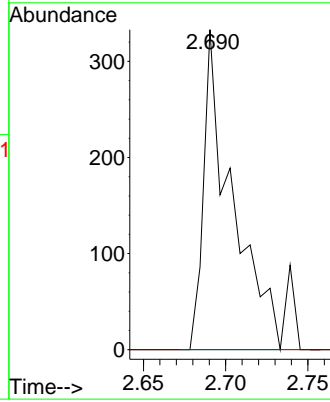
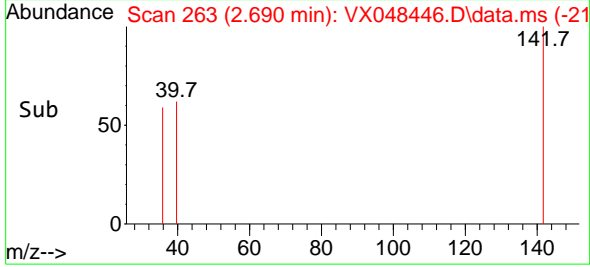


#18
 Methyl Acetate
 Concen: 0.353 ug/l
 RT: 2.690 min Scan# 201
 Delta R.T. -0.006 min
 Lab File: VX048446.D
 Acq: 03 Nov 2025 09:40

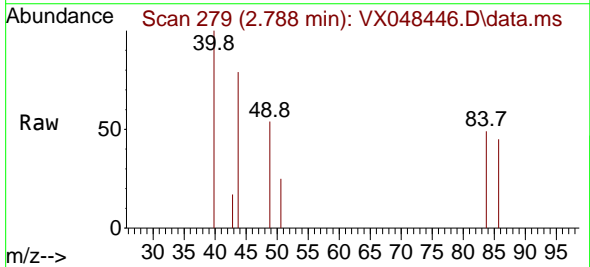
Instrument :
 MSVOA_X
 ClientSampleId :



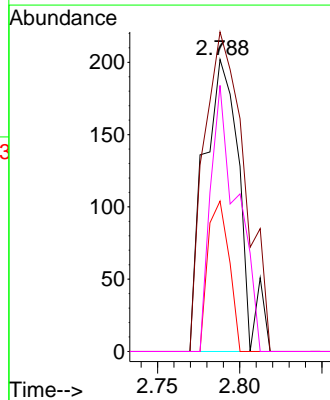
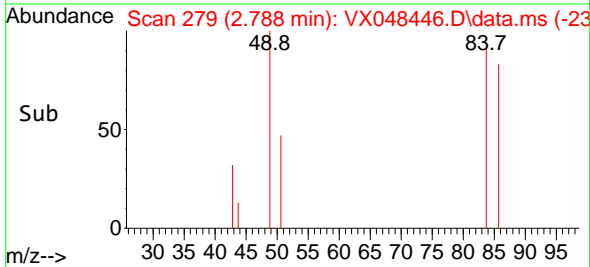
Tgt Ion: 43 Resp: 401
 Ion Ratio Lower Upper
 43 100
 74 0.0 17.5 26.3#

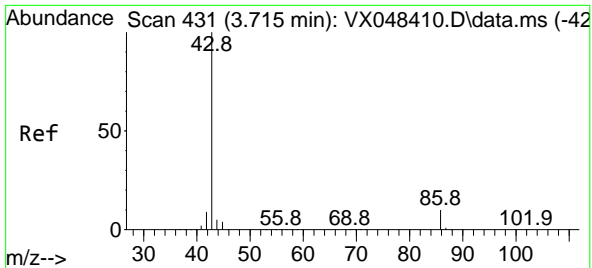


#20
 Methylene Chloride
 Concen: 0.233 ug/l
 RT: 2.788 min Scan# 279
 Delta R.T. 0.000 min
 Lab File: VX048446.D
 Acq: 03 Nov 2025 09:40



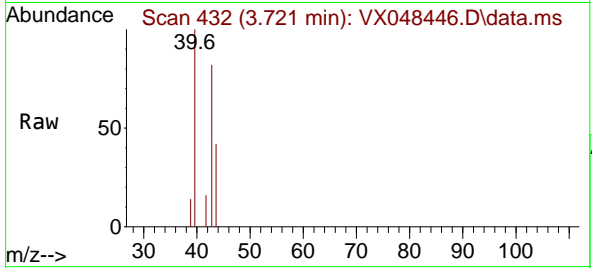
Tgt Ion: 84 Resp: 305
 Ion Ratio Lower Upper
 84 100
 49 109.4 104.1 156.1
 51 51.5 31.3 46.9#
 86 91.1 51.3 76.9#



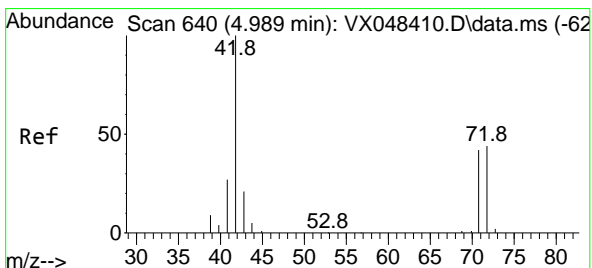
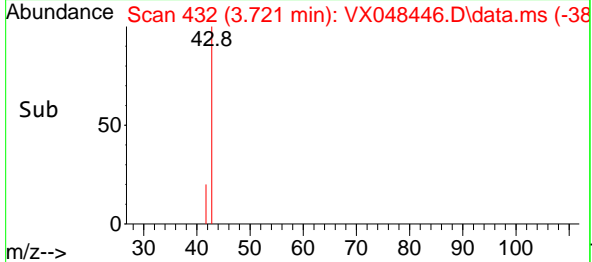
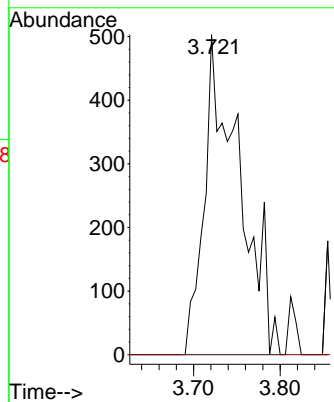


#23
 Vinyl Acetate
 Concen: 0.493 ug/l
 RT: 3.721 min Scan# 41
 Delta R.T. 0.006 min
 Lab File: VX048446.D
 Acq: 03 Nov 2025 09:40

Instrument :
 MSVOA_X
 ClientSampleId :

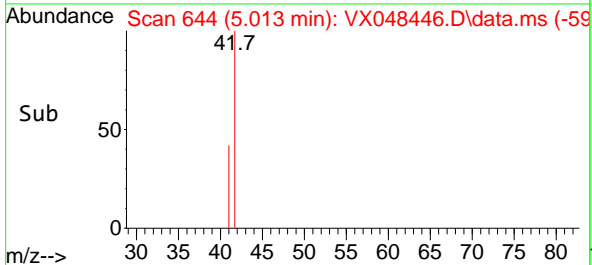
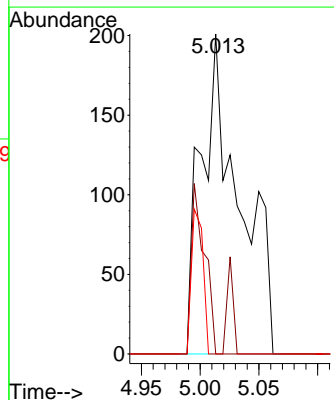
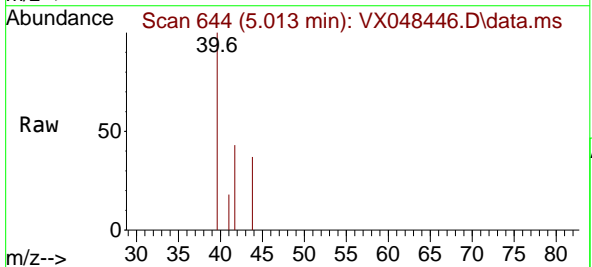


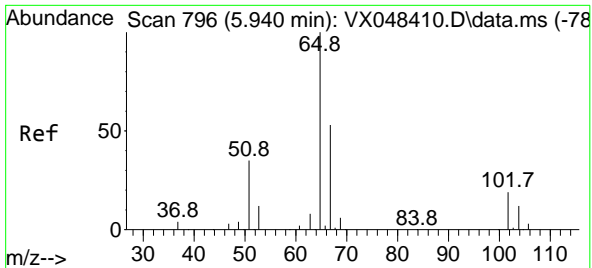
Tgt Ion: 43 Resp: 1409
 Ion Ratio Lower Upper
 43 100
 86 0.0 7.9 11.9#



#29
 Tetrahydrofuran
 Concen: 1.173 ug/l
 RT: 5.013 min Scan# 644
 Delta R.T. 0.024 min
 Lab File: VX048446.D
 Acq: 03 Nov 2025 09:40

Tgt Ion: 42 Resp: 453
 Ion Ratio Lower Upper
 42 100
 72 4.9 35.3 52.9#
 71 0.0 32.2 48.4#

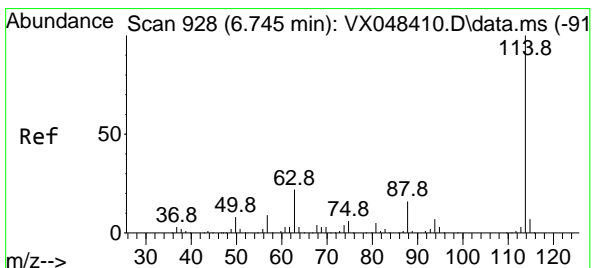
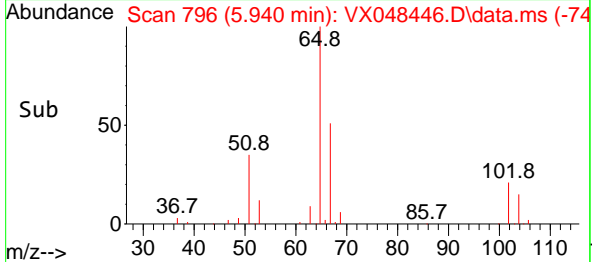
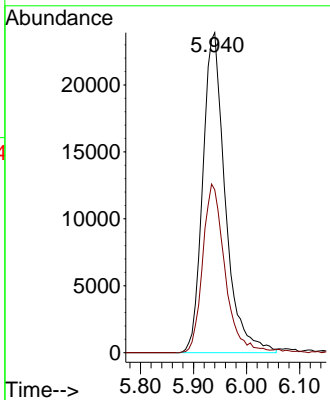
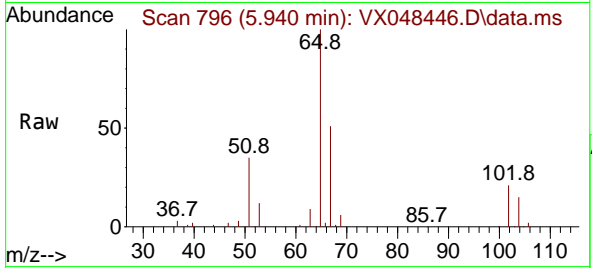




#33
 1,2-Dichloroethane-d4
 Concen: 47.015 ug/l
 RT: 5.940 min Scan# 796
 Delta R.T. 0.000 min
 Lab File: VX048446.D
 Acq: 03 Nov 2025 09:40

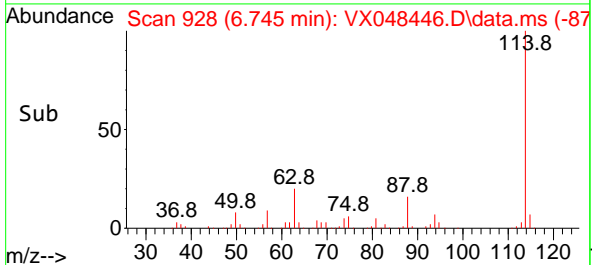
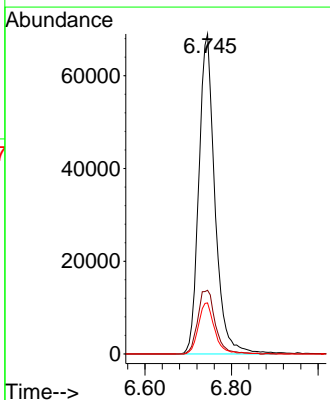
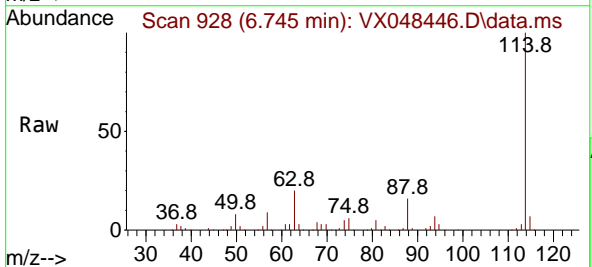
Instrument :
 MSVOA_X
 ClientSampleId :

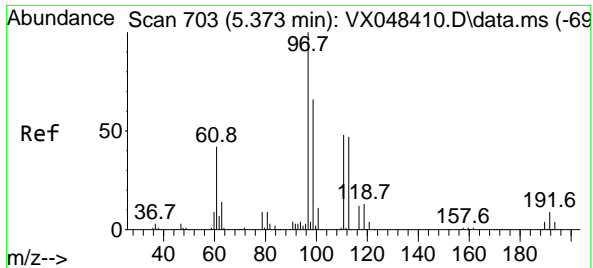
Tgt Ion: 65 Resp: 70404
 Ion Ratio Lower Upper
 65 100
 67 52.1 0.0 105.0



#34
 1,4-Difluorobenzene
 Concen: 50.000 ug/l
 RT: 6.745 min Scan# 928
 Delta R.T. 0.000 min
 Lab File: VX048446.D
 Acq: 03 Nov 2025 09:40

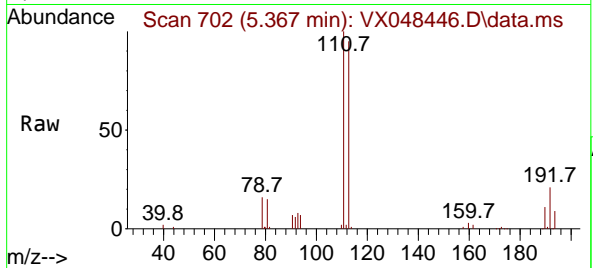
Tgt Ion: 114 Resp: 177727
 Ion Ratio Lower Upper
 114 100
 63 19.9 0.0 43.2
 88 15.9 0.0 33.6



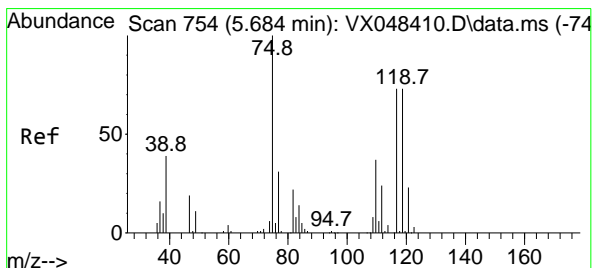
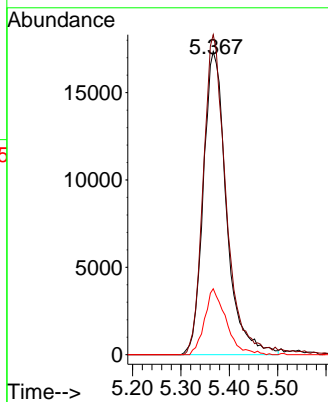
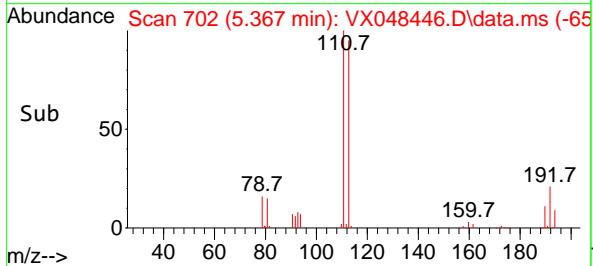


#35
 Dibromofluoromethane
 Concen: 56.878 ug/l
 RT: 5.367 min Scan# 702
 Delta R.T. -0.006 min
 Lab File: VX048446.D
 Acq: 03 Nov 2025 09:40

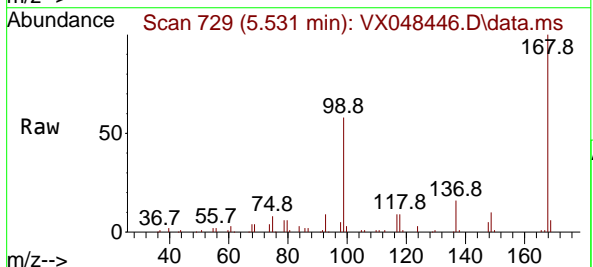
Instrument :
 MSVOA_X
 ClientSampleId :



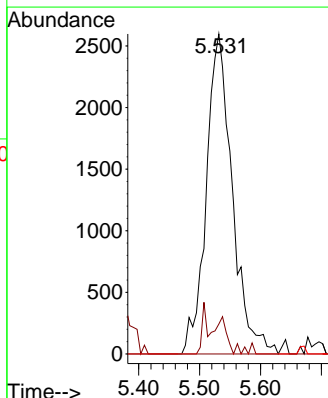
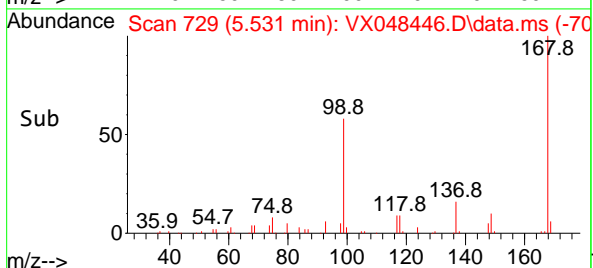
Tgt Ion:113 Resp: 57634
 Ion Ratio Lower Upper
 113 100
 111 103.8 82.2 123.4
 192 20.3 15.1 22.7

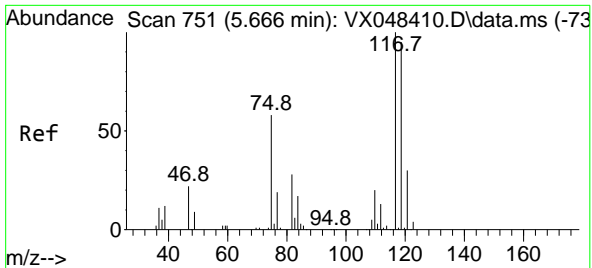


#36
 1,1-Dichloropropene
 Concen: 4.527 ug/l
 RT: 5.531 min Scan# 729
 Delta R.T. -0.152 min
 Lab File: VX048446.D
 Acq: 03 Nov 2025 09:40



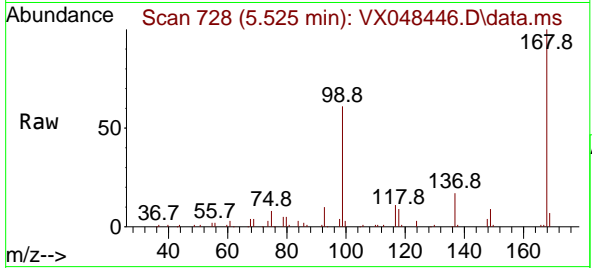
Tgt Ion: 75 Resp: 7704
 Ion Ratio Lower Upper
 75 100
 110 4.7 17.7 53.1#
 77 0.0 24.3 36.5#



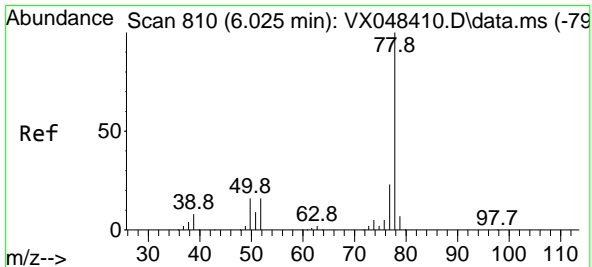
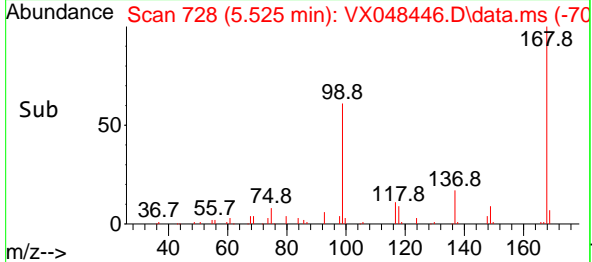
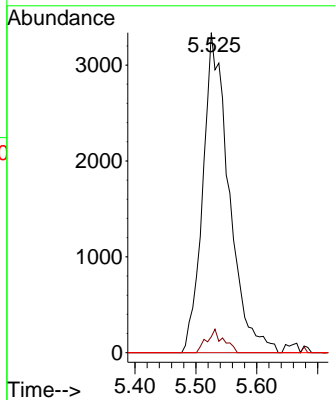


#38
 Carbon Tetrachloride
 Concen: 5.092 ug/l
 RT: 5.525 min Scan# 711
 Delta R.T. -0.140 min
 Lab File: VX048446.D
 Acq: 03 Nov 2025 09:40

Instrument : MSVOA_X
 ClientSampleId :

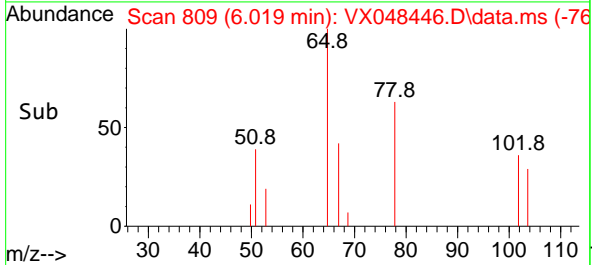
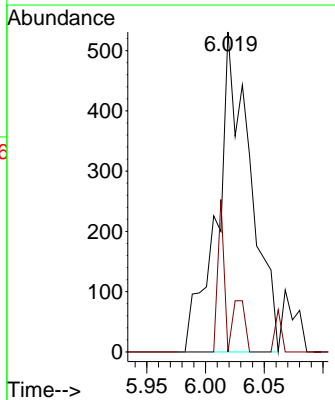
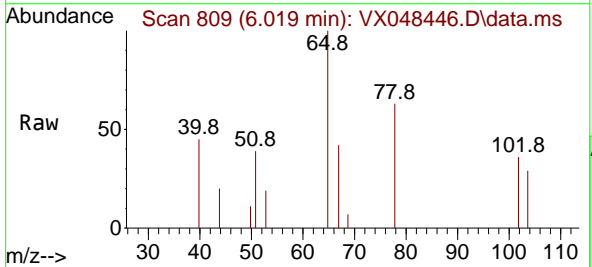


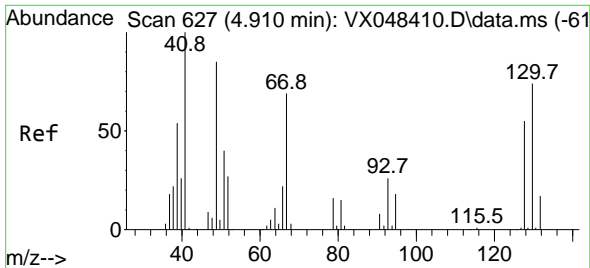
Tgt Ion:117 Resp: 10004
 Ion Ratio Lower Upper
 117 100
 119 5.0 77.2 115.8#
 121 0.0 24.8 37.2#



#40
 Benzene
 Concen: 0.201 ug/l
 RT: 6.019 min Scan# 809
 Delta R.T. -0.006 min
 Lab File: VX048446.D
 Acq: 03 Nov 2025 09:40

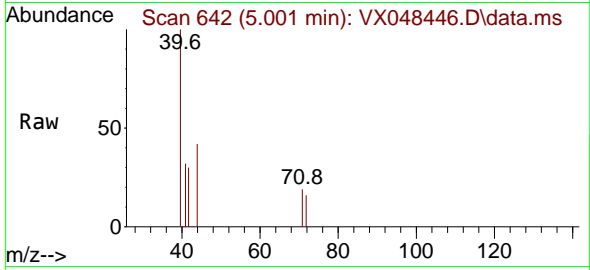
Tgt Ion: 78 Resp: 1044
 Ion Ratio Lower Upper
 78 100
 77 0.0 19.3 28.9#





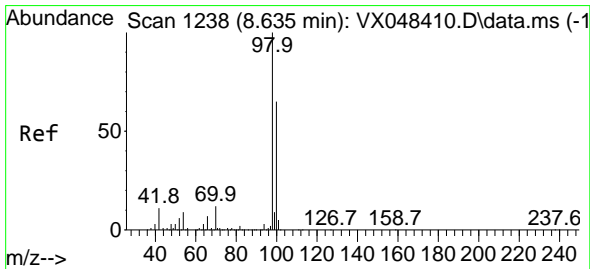
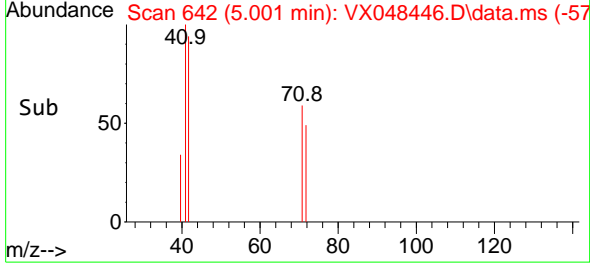
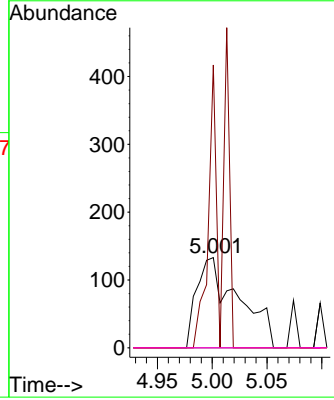
#41
 Methacrylonitrile
 Concen: 0.485 ug/l
 RT: 5.001 min Scan# 641
 Delta R.T. 0.091 min
 Lab File: VX048446.D
 Acq: 03 Nov 2025 09:40

Instrument : MSVOA_X
 ClientSampleId :



Tgt Ion: 41 Resp: 354

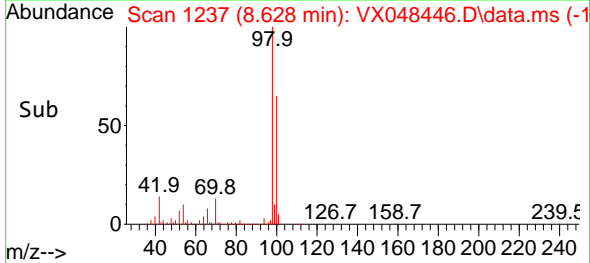
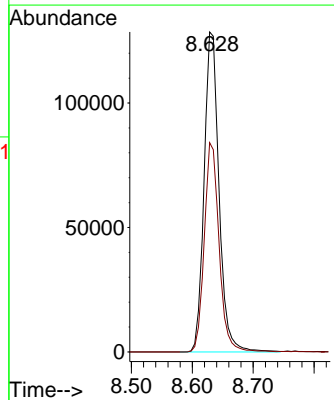
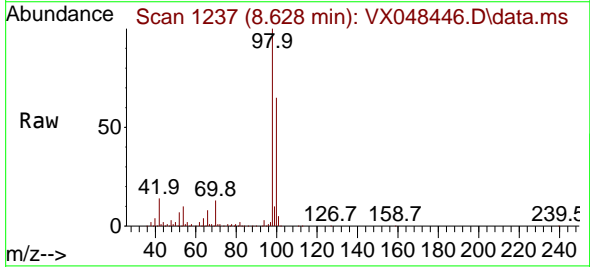
Ion	Ratio	Lower	Upper
41	100		
39	59.6	44.0	66.0
67	0.0	58.7	88.1#
52	0.0	25.9	38.9#

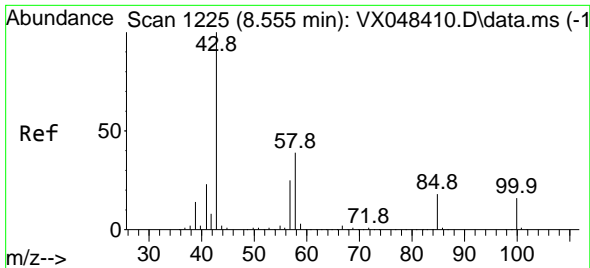


#50
 Toluene-d8
 Concen: 49.007 ug/l
 RT: 8.628 min Scan# 1237
 Delta R.T. -0.006 min
 Lab File: VX048446.D
 Acq: 03 Nov 2025 09:40

Tgt Ion: 98 Resp: 219202

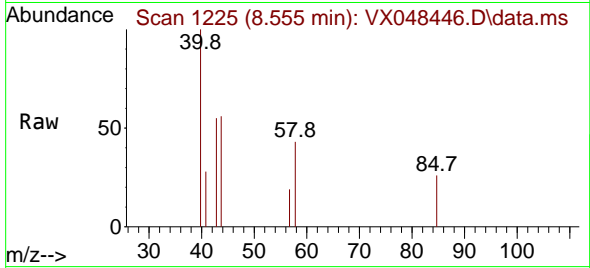
Ion	Ratio	Lower	Upper
98	100		
100	65.0	53.0	79.4



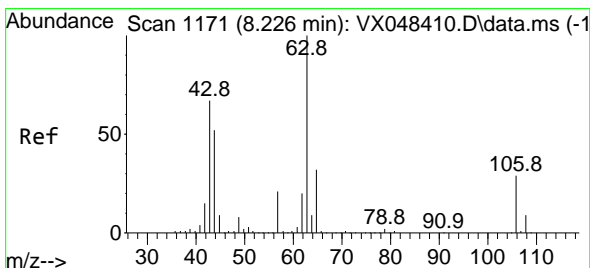
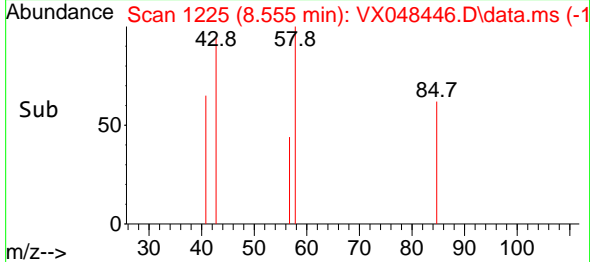
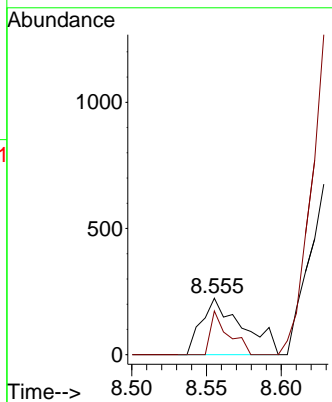


#51
 4-Methyl-2-Pentanone
 Concen: 0.319 ug/l
 RT: 8.555 min Scan# 1172
 Delta R.T. 0.000 min
 Lab File: VX048446.D
 Acq: 03 Nov 2025 09:40

Instrument : MSVOA_X
 ClientSampleId :

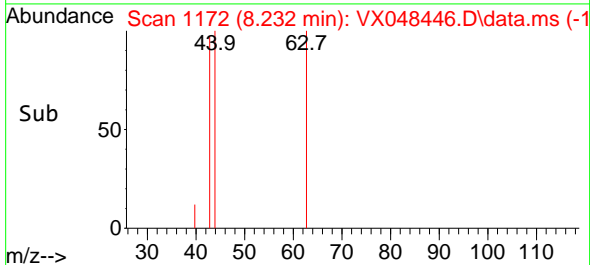
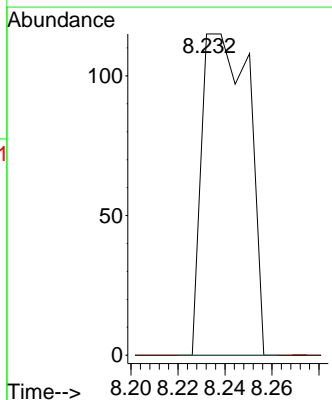
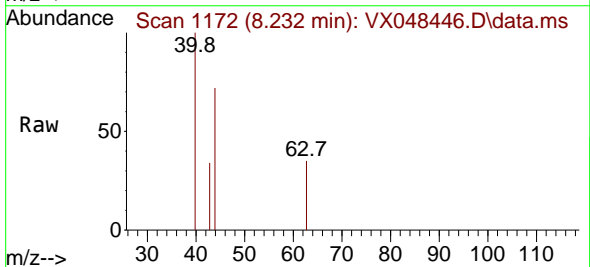


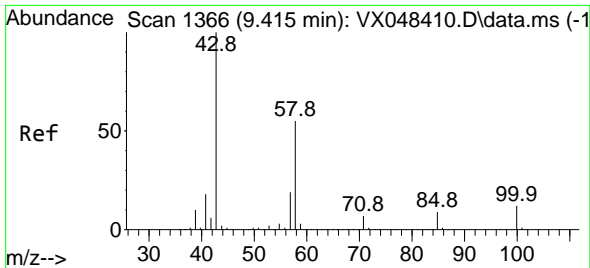
Tgt Ion: 43 Resp: 425
 Ion Ratio Lower Upper
 43 100
 58 33.9 29.5 44.3



#58
 2-Chloroethyl Vinyl ether
 Concen: 9.444 ug/l
 RT: 8.232 min Scan# 1172
 Delta R.T. 0.006 min
 Lab File: VX048446.D
 Acq: 03 Nov 2025 09:40

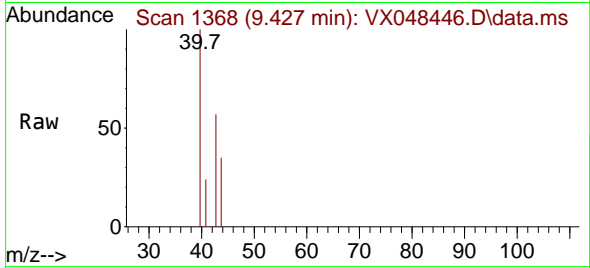
Tgt Ion: 63 Resp: 159
 Ion Ratio Lower Upper
 63 100
 106 0.0 22.2 33.2#



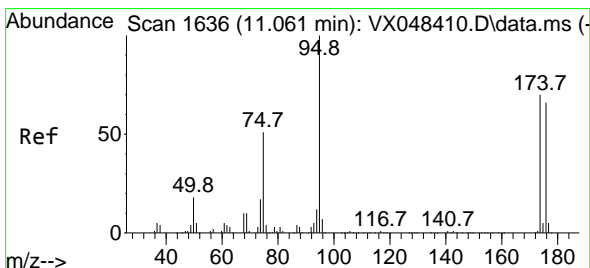
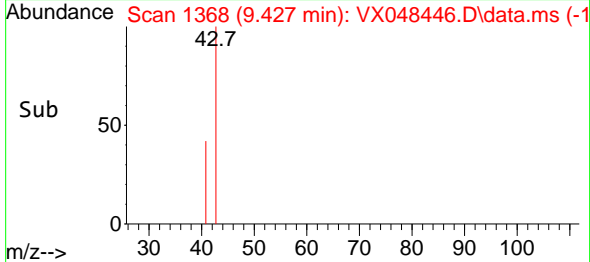
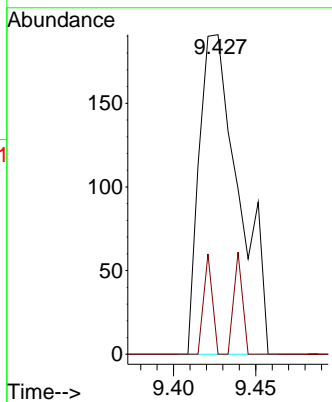


#59
 2-Hexanone
 Concen: 0.369 ug/l
 RT: 9.427 min Scan# 11
 Delta R.T. 0.012 min
 Lab File: VX048446.D
 Acq: 03 Nov 2025 09:40

Instrument :
 MSVOA_X
 ClientSampleId :

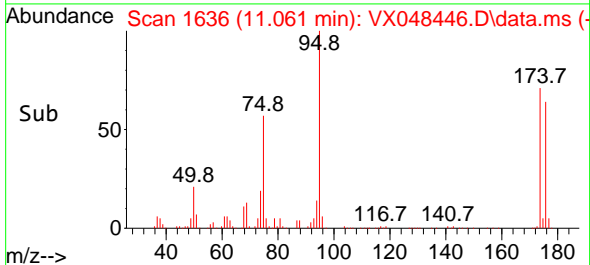
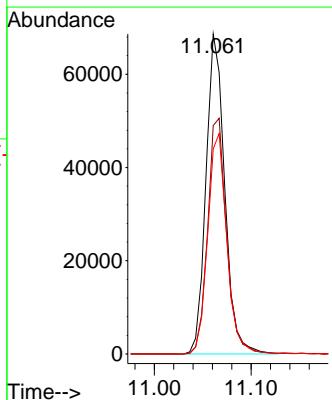
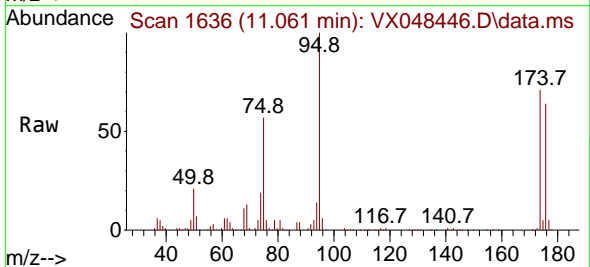


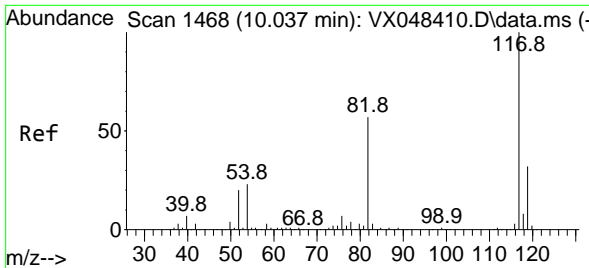
Tgt Ion: 43 Resp: 320
 Ion Ratio Lower Upper
 43 100
 58 6.9 26.3 78.8#



#62
 4-Bromofluorobenzene
 Concen: 55.326 ug/l
 RT: 11.061 min Scan# 1636
 Delta R.T. -0.000 min
 Lab File: VX048446.D
 Acq: 03 Nov 2025 09:40

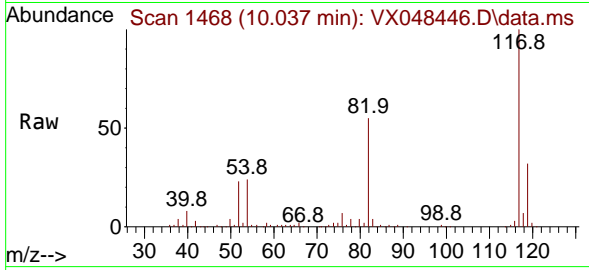
Tgt Ion: 95 Resp: 92573
 Ion Ratio Lower Upper
 95 100
 174 74.9 0.0 147.8
 176 70.3 0.0 142.8





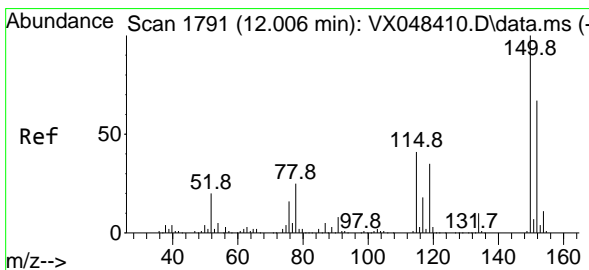
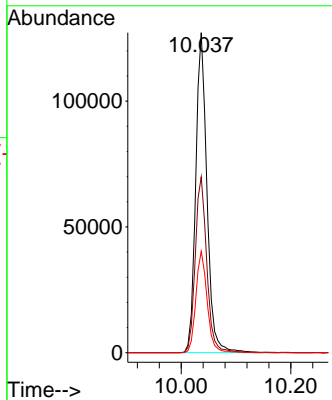
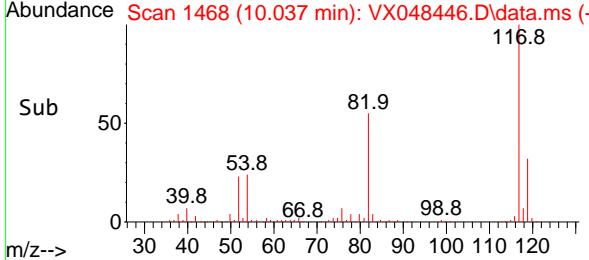
#63
 Chlorobenzene-d5
 Concen: 50.000 ug/l
 RT: 10.037 min Scan# 1468
 Delta R.T. -0.000 min
 Lab File: VX048446.D
 Acq: 03 Nov 2025 09:40

Instrument : MSVOA_X
 ClientSampleId :

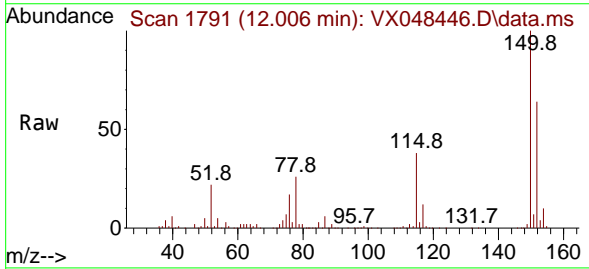


Tgt Ion:117 Resp: 181874

Ion	Ratio	Lower	Upper
117	100		
82	55.0	46.5	69.7
119	31.7	25.9	38.9

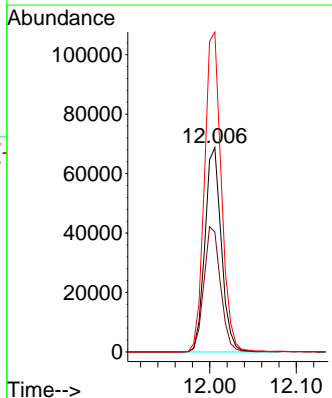
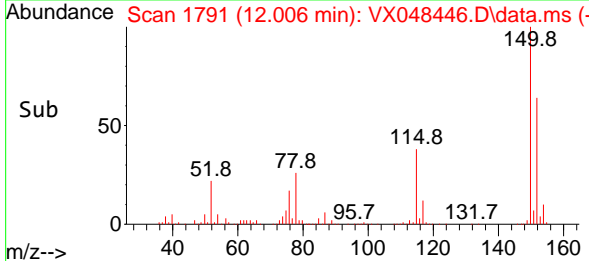


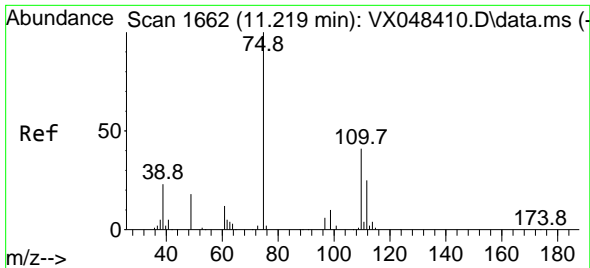
#72
 1,4-Dichlorobenzene-d4
 Concen: 50.000 ug/l
 RT: 12.006 min Scan# 1791
 Delta R.T. 0.000 min
 Lab File: VX048446.D
 Acq: 03 Nov 2025 09:40



Tgt Ion:152 Resp: 90694

Ion	Ratio	Lower	Upper
152	100		
115	62.4	43.1	129.4
150	160.3	0.0	353.0

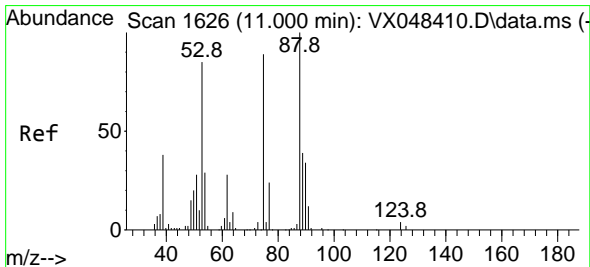
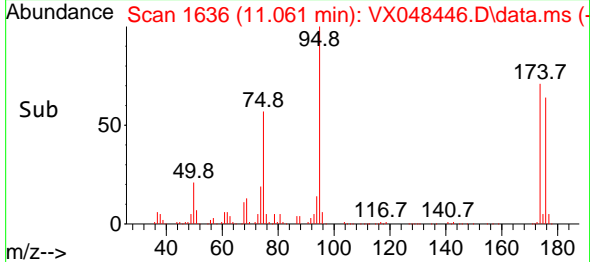
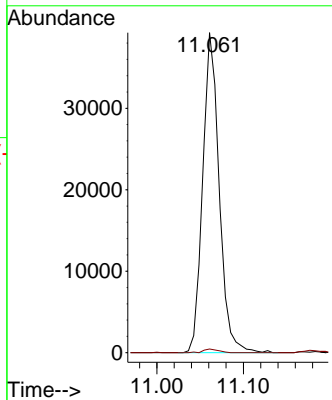
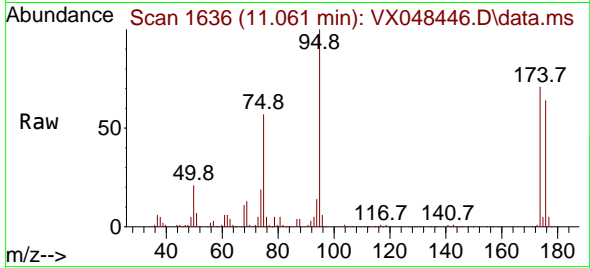




#76
 1,2,3-Trichloropropane
 Concen: 39.824 ug/l
 RT: 11.061 min Scan# 1636
 Delta R.T. -0.159 min
 Lab File: VX048446.D
 Acq: 03 Nov 2025 09:40

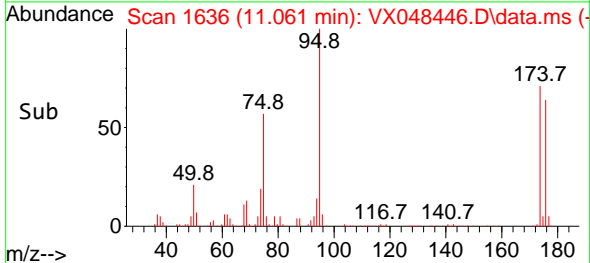
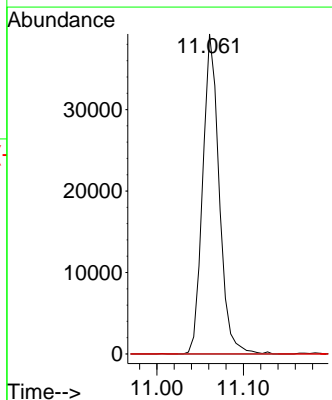
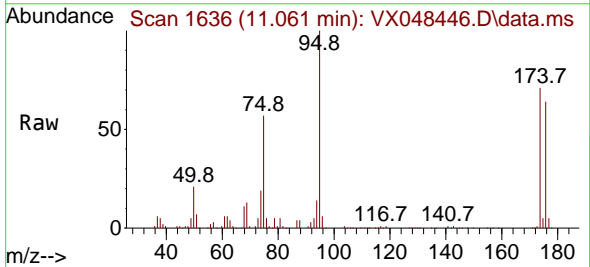
Instrument : MSVOA_X
 ClientSampleId :

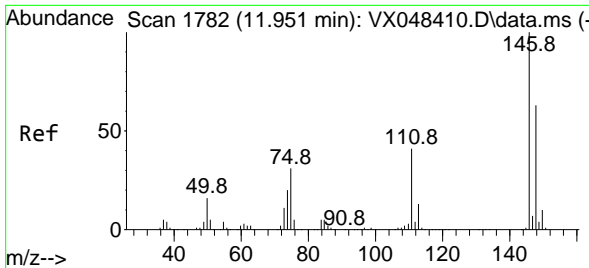
Tgt Ion: 75 Resp: 51942
 Ion Ratio Lower Upper
 75 100
 77 1.0 22.4 67.2#



#81
 trans-1,4-Dichloro-2-butene
 Concen: 137.814 ug/l
 RT: 11.061 min Scan# 1636
 Delta R.T. 0.061 min
 Lab File: VX048446.D
 Acq: 03 Nov 2025 09:40

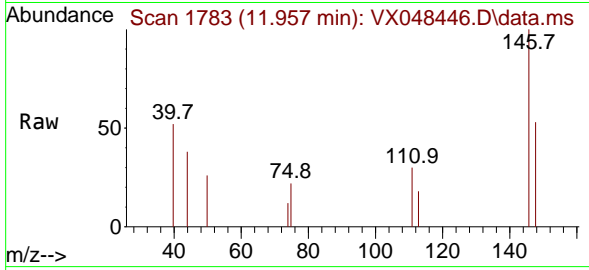
Tgt Ion: 75 Resp: 51942
 Ion Ratio Lower Upper
 75 100
 53 0.0 79.5 119.3#
 89 0.0 36.8 55.2#



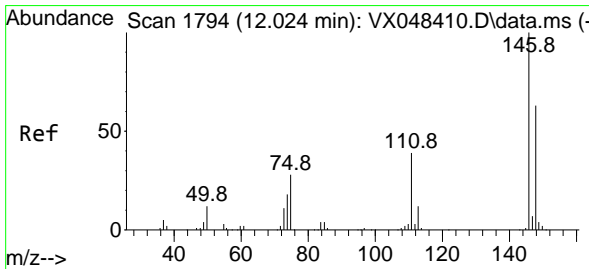
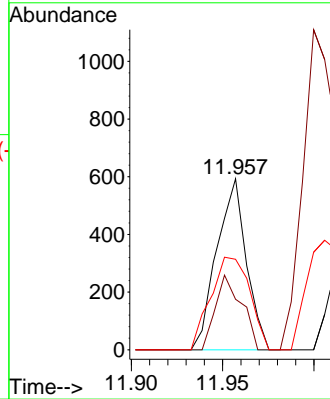
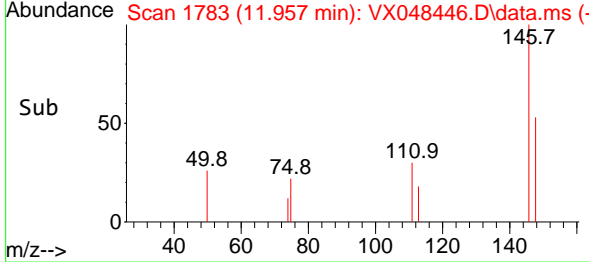


#87
 1,3-Dichlorobenzene
 Concen: 0.211 ug/l
 RT: 11.957 min Scan# 1783
 Delta R.T. 0.006 min
 Lab File: VX048446.D
 Acq: 03 Nov 2025 09:40

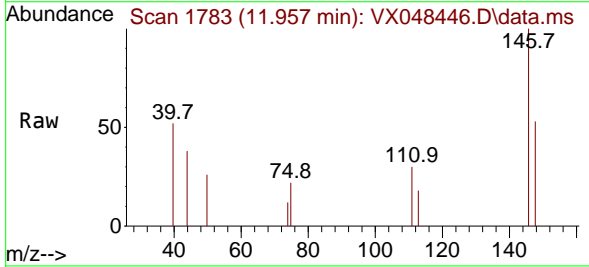
Instrument : MSVOA_X
 ClientSampleId :



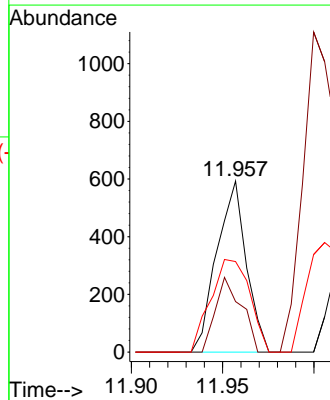
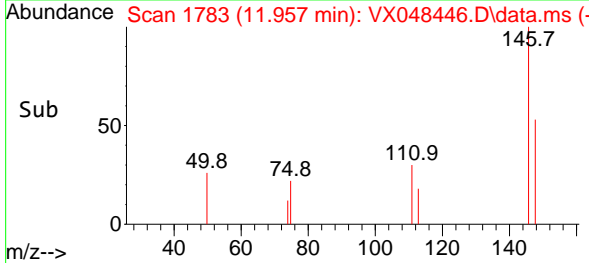
Tgt Ion:146 Resp: 667
 Ion Ratio Lower Upper
 146 100
 111 38.7 20.4 61.2
 148 71.7 31.9 95.9

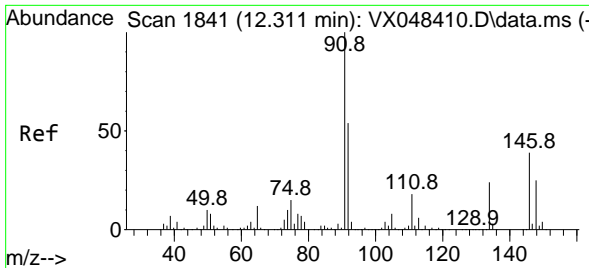


#88
 1,4-Dichlorobenzene
 Concen: 0.207 ug/l
 RT: 11.957 min Scan# 1783
 Delta R.T. -0.067 min
 Lab File: VX048446.D
 Acq: 03 Nov 2025 09:40



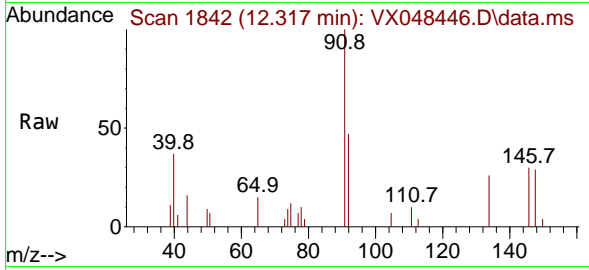
Tgt Ion:146 Resp: 667
 Ion Ratio Lower Upper
 146 100
 111 38.7 20.1 60.2
 148 71.7 31.8 95.3





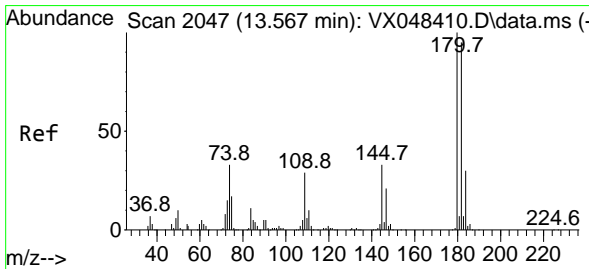
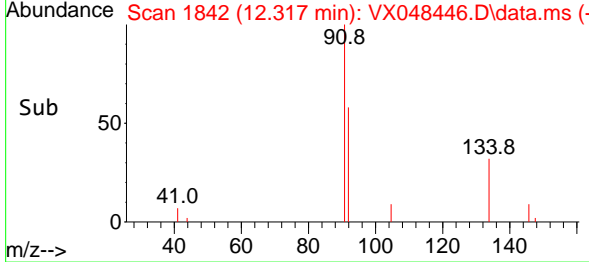
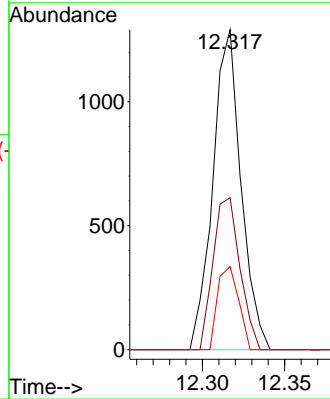
#89
 n-Butylbenzene
 Concen: 0.278 ug/l
 RT: 12.317 min Scan# 11
 Delta R.T. 0.006 min
 Lab File: VX048446.D
 Acq: 03 Nov 2025 09:40

Instrument :
 MSVOA_X
 ClientSampleId :



Tgt Ion: 91 Resp: 1537

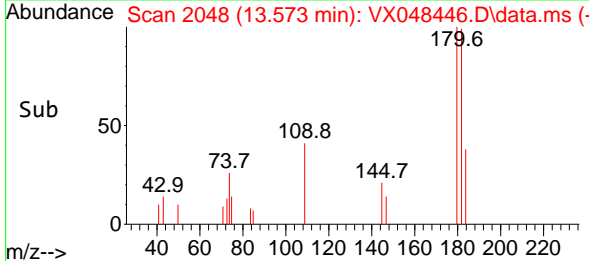
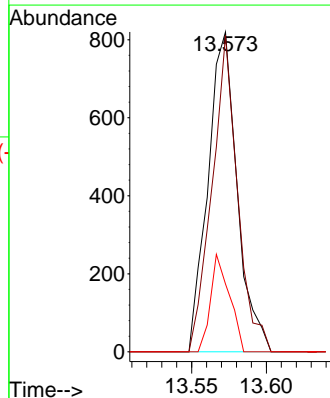
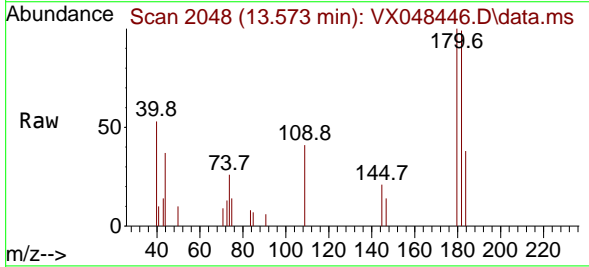
Ion	Ratio	Lower	Upper
91	100		
92	45.3	26.9	80.6
134	19.3	12.7	38.1

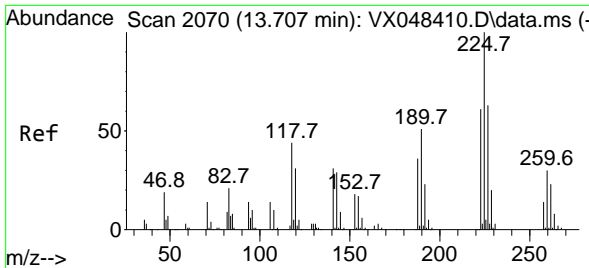


#93
 1,2,4-Trichlorobenzene
 Concen: 0.550 ug/l
 RT: 13.573 min Scan# 2048
 Delta R.T. 0.006 min
 Lab File: VX048446.D
 Acq: 03 Nov 2025 09:40

Tgt Ion: 180 Resp: 1113

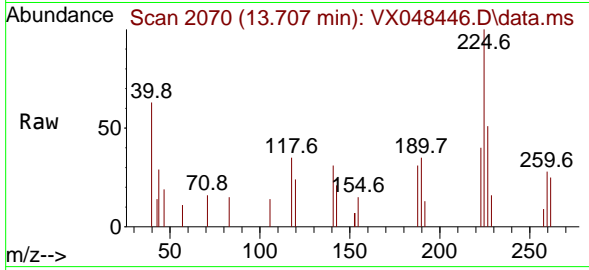
Ion	Ratio	Lower	Upper
180	100		
182	86.7	47.3	142.0
145	19.8	16.3	48.9





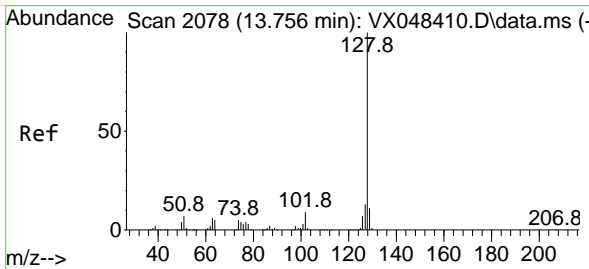
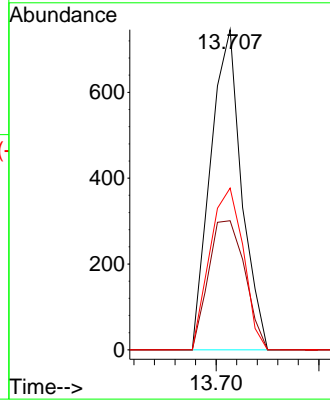
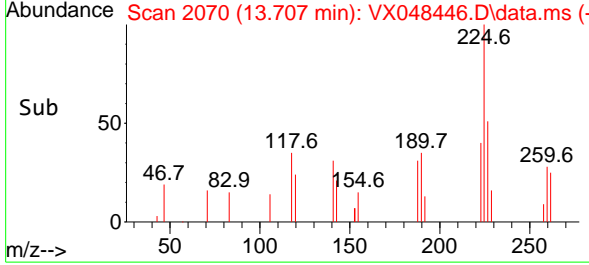
#94
 Hexachlorobutadiene
 Concen: 0.920 ug/l
 RT: 13.707 min Scan# 2070
 Delta R.T. 0.000 min
 Lab File: VX048446.D
 Acq: 03 Nov 2025 09:40

Instrument : MSVOA_X
 ClientSampleId :

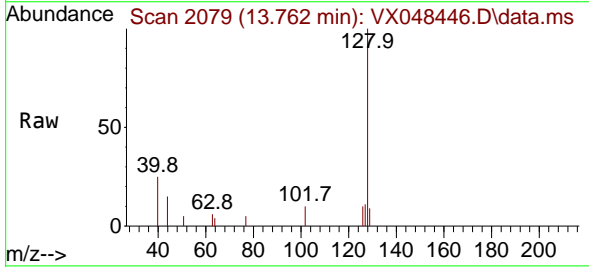


Tgt Ion: 225 Resp: 781

Ion	Ratio	Lower	Upper
225	100		
223	47.5	32.6	97.7
227	54.7	32.5	97.4

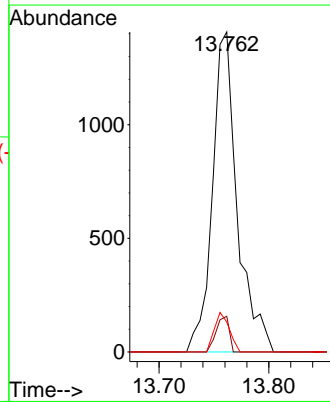
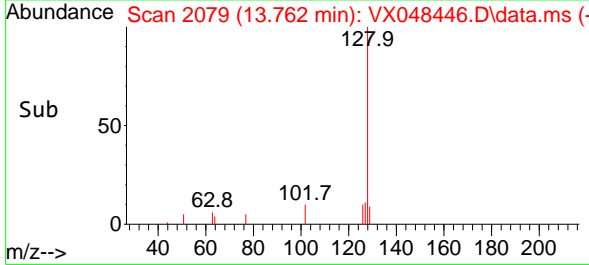


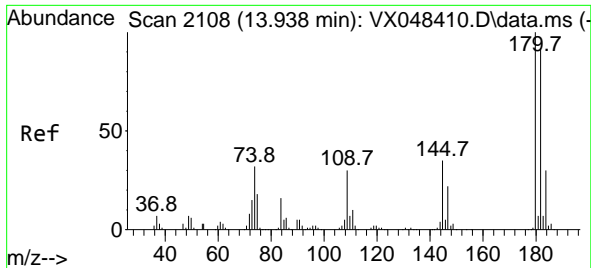
#95
 Naphthalene
 Concen: 0.434 ug/l
 RT: 13.762 min Scan# 2079
 Delta R.T. 0.006 min
 Lab File: VX048446.D
 Acq: 03 Nov 2025 09:40



Tgt Ion: 128 Resp: 2219

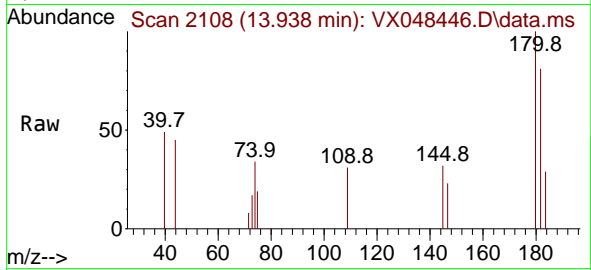
Ion	Ratio	Lower	Upper
128	100		
127	5.8	10.2	15.4#
129	7.4	8.6	12.8#





#96
 1,2,3-Trichlorobenzene
 Concen: 0.532 ug/l
 RT: 13.938 min Scan# 21
 Delta R.T. 0.000 min
 Lab File: VX048446.D
 Acq: 03 Nov 2025 09:40

Instrument :
 MSVOA_X
 ClientSampleId :



Tgt Ion:180 Resp: 977
 Ion Ratio Lower Upper
 180 100
 182 86.6 46.6 139.7
 145 28.0 16.9 50.7

