

Data Path : Z:\voasrv\HPCHEM1\MSVOA\_X\Data\VX110325\  
 Data File : VX048456.D  
 Acq On : 03 Nov 2025 14:59  
 Operator : JC/MD  
 Sample : Q3495-03RE  
 Misc : 5.0mL/MSVOA\_X/WATER  
 ALS Vial : 13 Sample Multiplier: 1

Instrument :  
 MSVOA\_X  
 ClientSampleId :  
 TW-1025-1RE

Integration Parameters: RTEINT.P

Integrator: RTE  
 Smoothing : ON Filtering: 5  
 Sampling : 1 Min Area: 3 % of largest Peak  
 Start Thrs: 0.2 Max Peaks: 100  
 Stop Thrs : 0 Peak Location: TOP

If leading or trailing edge < 100 prefer < Baseline drop else tangent >  
 Peak separation: 5

Method : Z:\voasrv\HPCHEM1\MSVOA\_X\Method\82X102925W.M  
 Title : SW846 8260

Signal : TIC: VX048456.D\data.ms

peak #	R.T. min	first scan	max scan	last scan	PK TY	peak height	corr. area	corr. % max.	% of total
1	3.111	323	332	342	rBV2	8596	22558	3.18%	0.557%
2	5.379	692	704	720	rBV2	73766	245481	34.56%	6.064%
3	5.538	720	730	757	rVB	134551	423870	59.68%	10.471%
4	5.940	786	796	820	rBV	92860	273557	38.52%	6.758%
5	6.745	919	928	949	rBV	222460	584669	82.32%	14.443%
6	8.635	1230	1238	1258	rBV	435558	710218	100.00%	17.544%
7	10.037	1462	1468	1485	rBV	455427	657076	92.52%	16.231%
8	11.067	1631	1637	1649	rBV	351249	487022	68.57%	12.031%
9	12.006	1785	1791	1803	rBV	479236	643736	90.64%	15.902%

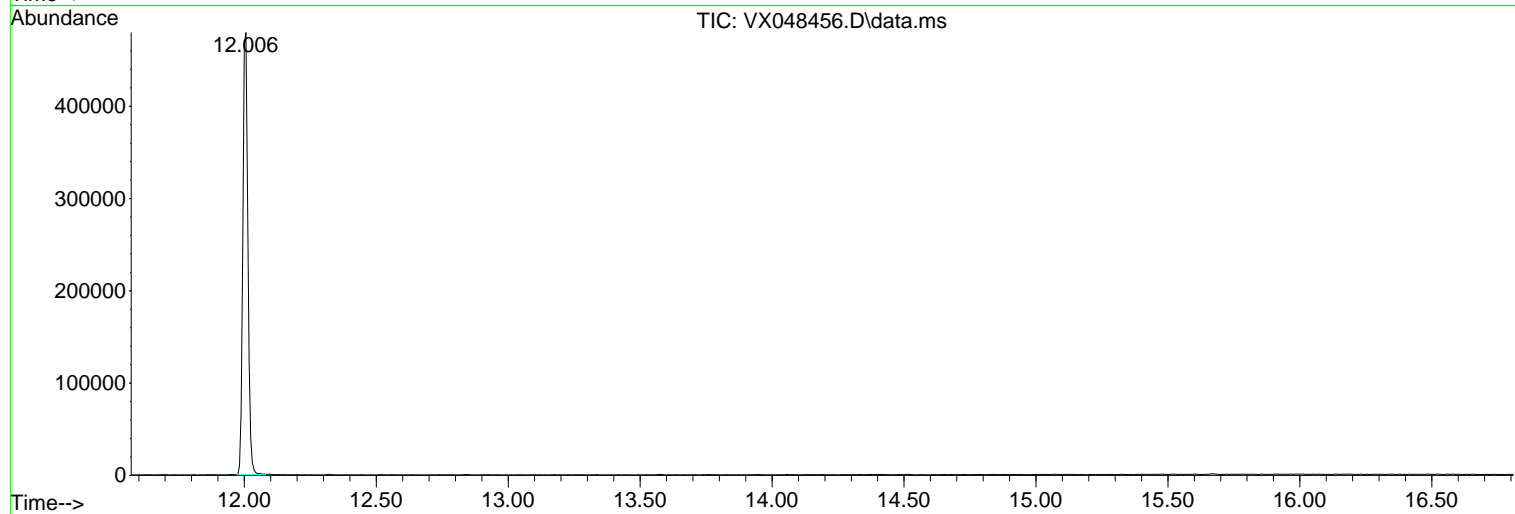
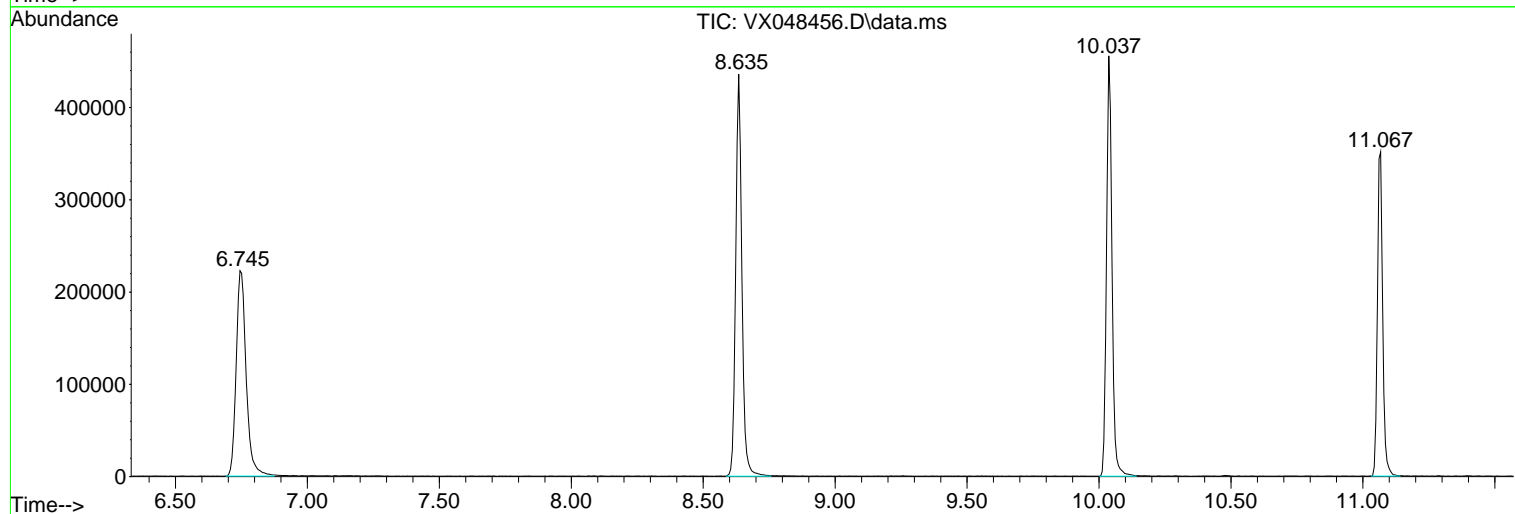
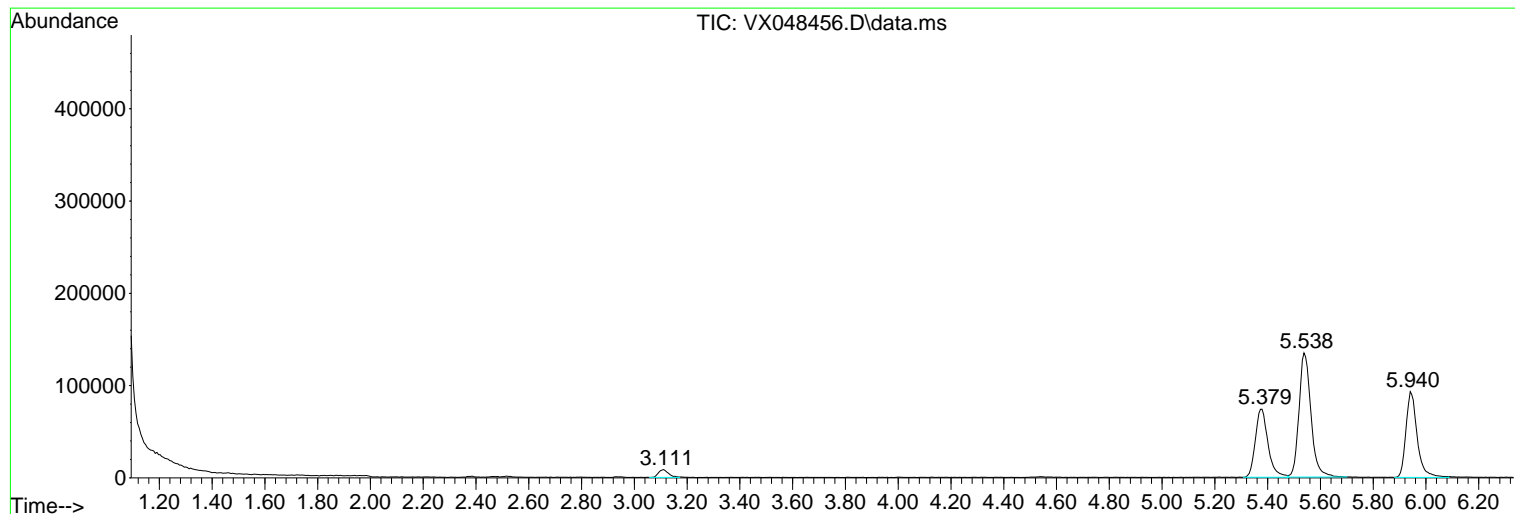
Sum of corrected areas: 4048187

Data Path : Z:\voasrv\HPCHEM1\MSVOA\_X\Data\VX110325\  
 Data File : VX048456.D  
 Acq On : 03 Nov 2025 14:59  
 Operator : JC/MD  
 Sample : Q3495-03RE  
 Misc : 5.0mL/MSVOA\_X/WATER  
 ALS Vial : 13 Sample Multiplier: 1

Instrument :  
 MSVOA\_X  
 ClientSampleId :  
 TW-1025-1RE

Quant Method : Z:\voasrv\HPCHEM1\MSVOA\_X\Method\82X102925W.M  
 Quant Title : SW846 8260

TIC Library : C:\Database\NIST20.L  
 TIC Integration Parameters: LSCINT.P



Library Search Compound Report

Data Path : Z:\voasrv\HPCHEM1\MSVOA\_X\Data\VX110325\  
Data File : VX048456.D  
Acq On : 03 Nov 2025 14:59  
Operator : JC/MD  
Sample : Q3495-03RE  
Misc : 5.0mL/MSVOA\_X/WATER  
ALS Vial : 13 Sample Multiplier: 1

Instrument :  
MSVOA\_X  
ClientSampleId :  
TW-1025-1RE

Quant Method : Z:\voasrv\HPCHEM1\MSVOA\_X\Method\82X102925W.M  
Quant Title : SW846 8260

TIC Library : C:\Database\NIST20.L  
TIC Integration Parameters: LSCINT.P

No Library Search Compounds Detected

\*\*\*\*\*

Data Path : Z:\voasrv\HPCHEM1\MSVOA\_X\Data\VX110325\  
Data File : VX048456.D  
Acq On : 03 Nov 2025 14:59  
Operator : JC/MD  
Sample : Q3495-03RE  
Misc : 5.0mL/MSVOA\_X/WATER  
ALS Vial : 13 Sample Multiplier: 1

Instrument :  
MSVOA\_X  
ClientSampleId :  
TW-1025-1RE

Quant Method : Z:\voasrv\HPCHEM1\MSVOA\_X\Method\82X102925W.M  
Quant Title : SW846 8260

TIC Library : C:\Database\NIST20.L  
TIC Integration Parameters: LSCINT.P

TIC Top Hit name	RT	EstConc	Units	Response	--Internal Standard--			
					#	RT	Resp	Conc

---