

Data Path : Z:\VOASRV\HPCHEM1\MSVOA X\DATA\VX110420\
 Data File : VX019240.D
 Acq On : 03 Nov 2020 18:10
 Operator : JC/MD
 Sample : PB132785ZHE#07
 Misc : 5.0mL/MSVOA X/WATER
 ALS Vial : 7 Sample Multiplier: 1

Instrument :
 MSVOA_X
ClientSampleId :
 PB132785ZHE#07

Quant Time: Nov 04 02:43:57 2020
 Quant Method : Z:\VOASRV\HPCHEM1\MSVOA_X\METHOD\82X102720W.M
 Quant Title : SW846 8260
 QLast Update : Tue Oct 27 13:55:07 2020
 Response via : Initial Calibration

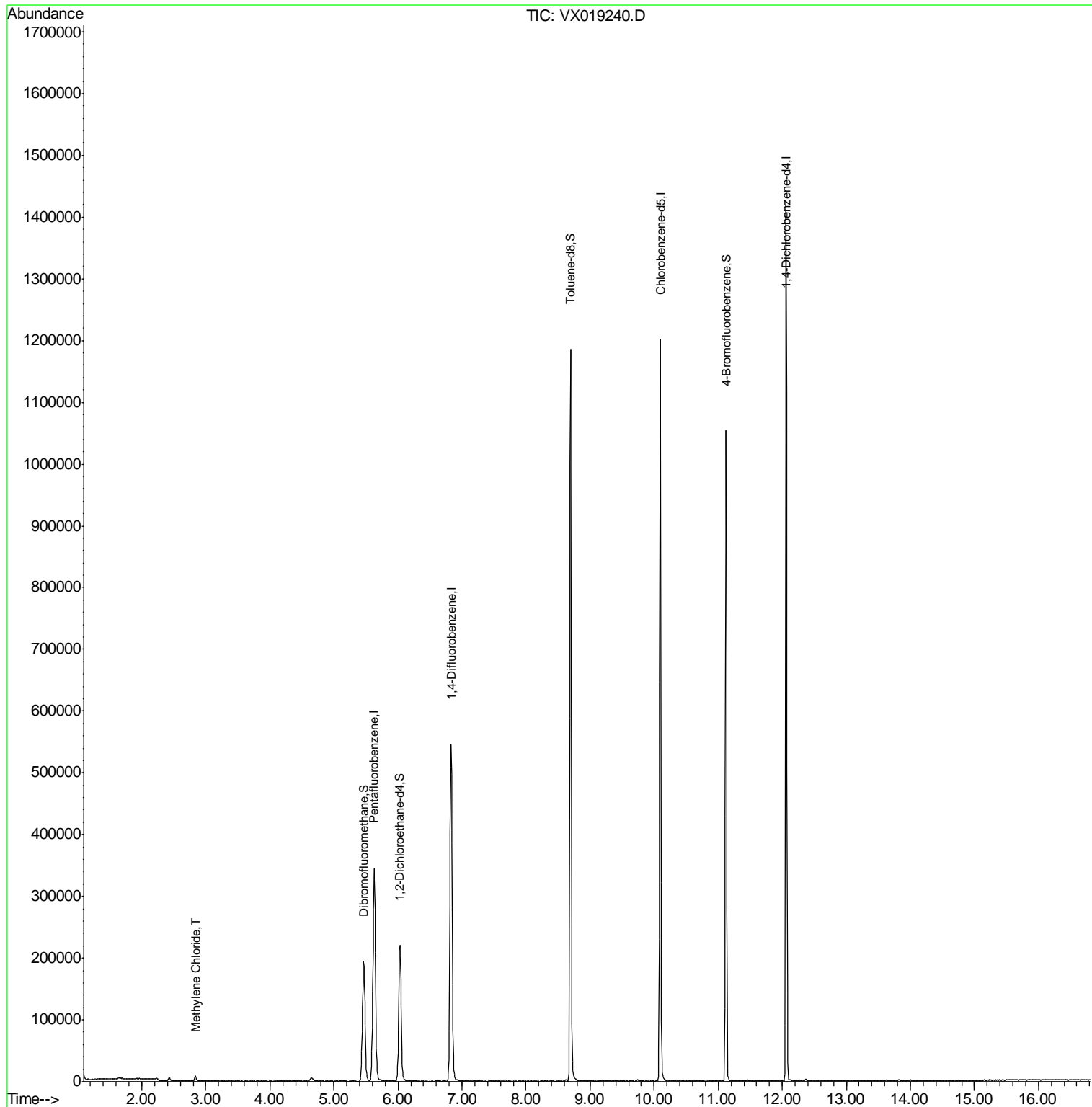
Internal Standards	R.T.	QIon	Response	Conc	Units	Dev(Min)
1) Pentafluorobenzene	5.63	168	323946	50.00	ug/l	0.00
34) 1,4-Difluorobenzene	6.83	114	556375	50.00	ug/l	0.00
63) Chlorobenzene-d5	10.10	117	548664	50.00	ug/l	0.00
72) 1,4-Dichlorobenzene-d4	12.06	152	284264	50.00	ug/l	0.00
System Monitoring Compounds						
33) 1,2-Dichloroethane-d4	6.03	65	213048	51.00	ug/l	0.00
Spiked Amount	50.000		Recovery	=	102.00%	
35) Dibromofluoromethane	5.46	113	168629	48.25	ug/l	0.00
Spiked Amount	50.000		Recovery	=	96.50%	
50) Toluene-d8	8.70	98	710884	53.96	ug/l	0.00
Spiked Amount	50.000		Recovery	=	107.92%	
62) 4-Bromofluorobenzene	11.12	95	274261	54.97	ug/l	0.00
Spiked Amount	50.000		Recovery	=	109.94%	
Target Compounds						Qvalue
20) Methylene Chloride	2.84	84	3617	1.000	ug/l	92

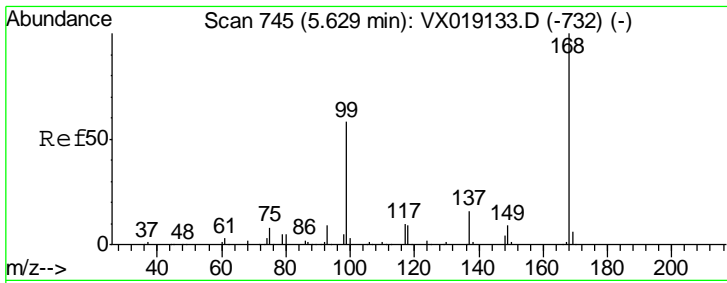
(#) = qualifier out of range (m) = manual integration (+) = signals summed

Data Path : Z:\VOASRV\HPCHEM1\MSVOA X\DATA\VX110420\
 Data File : VX019240.D
 Acq On : 03 Nov 2020 18:10
 Operator : JC/MD
 Sample : PB132785ZHE#07
 Misc : 5.0mL/MSVOA X/WATER
 ALS Vial : 7 Sample Multiplier: 1

Instrument :
 MSVOA_X
 ClientSampled :
 PB132785ZHE#07

Quant Time: Nov 04 02:43:57 2020
 Quant Method : Z:\VOASRV\HPCHEM1\MSVOA_X\METHOD\82X102720W.M
 Quant Title : SW846 8260
 QLast Update : Tue Oct 27 13:55:07 2020
 Response via : Initial Calibration

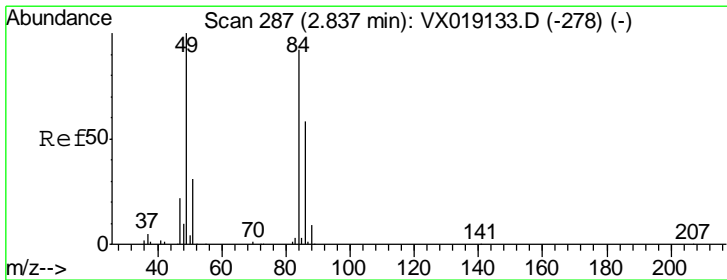
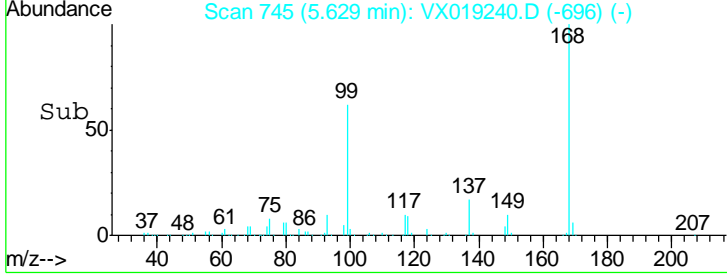
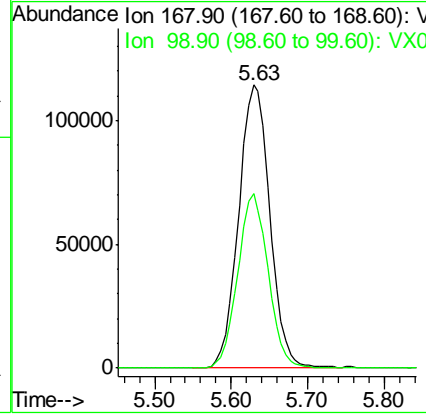
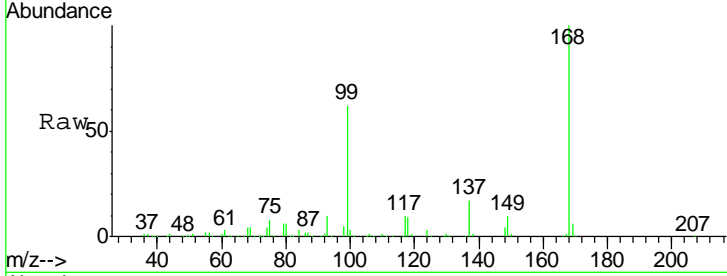




#1
 Pentafluorobenzene
 Concen: 50.000 ug/l
 RT: 5.63 min Scan# 745
 Delta R.T. -0.00 min
 Lab File: VX019240.D
 Acq: 03 Nov 2020 18:10

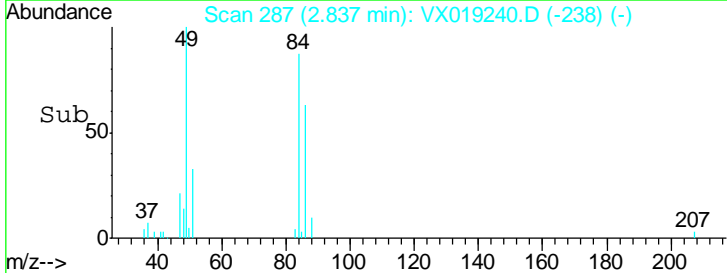
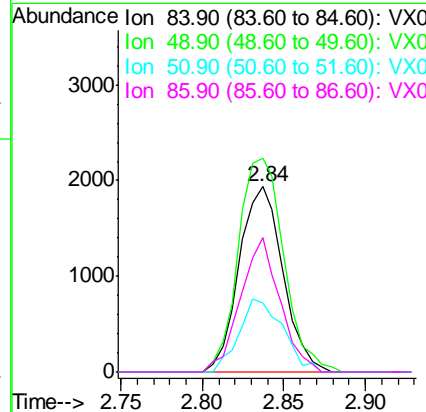
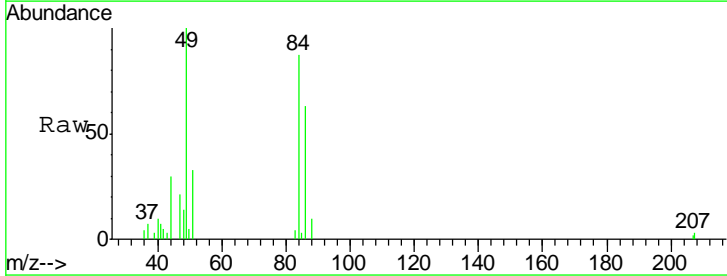
Instrument :
 MSVOA_X
 ClientSampleId :
 PB132785ZHE#07

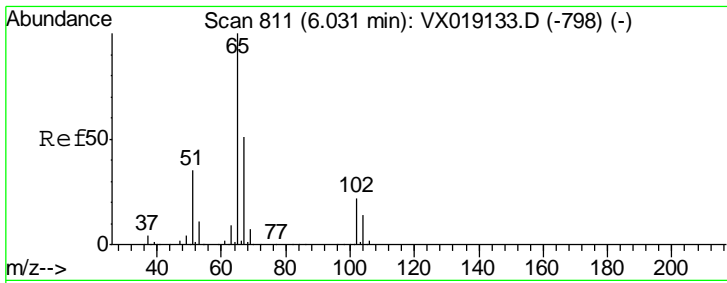
Tgt Ion	Resp	Lower	Upper
168	100		
99	61.7	46.6	69.8



#20
 Methylene Chloride
 Concen: 1.000 ug/l
 RT: 2.84 min Scan# 287
 Delta R.T. -0.00 min
 Lab File: VX019240.D
 Acq: 03 Nov 2020 18:10

Tgt Ion	Resp	Lower	Upper
84	100		
49	115.1	86.8	130.2
51	37.4	27.3	40.9
86	72.4	50.6	76.0

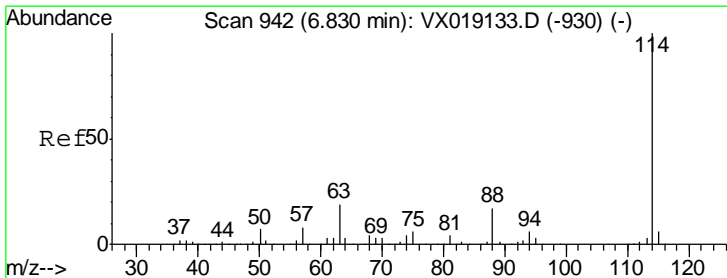
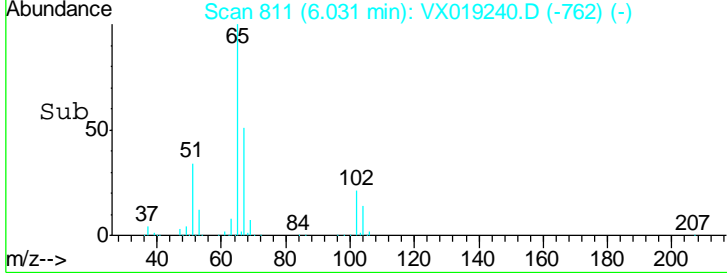
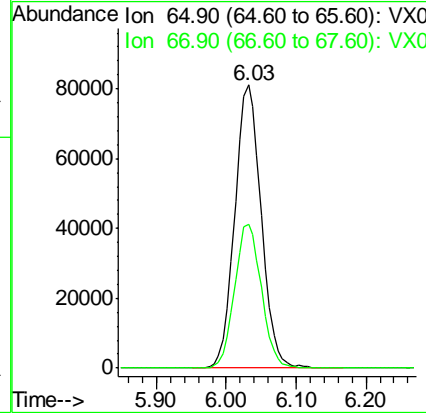
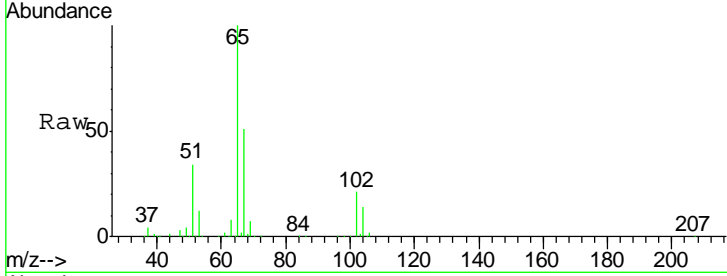




#33
 1,2-Dichloroethane-d4
 Concen: 50.997 ug/l
 RT: 6.03 min Scan# 811
 Delta R.T. -0.00 min
 Lab File: VX019240.D
 Acq: 03 Nov 2020 18:10

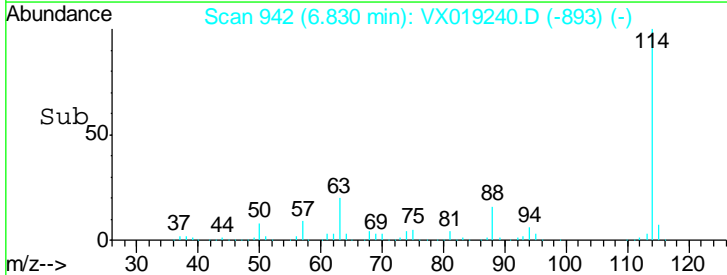
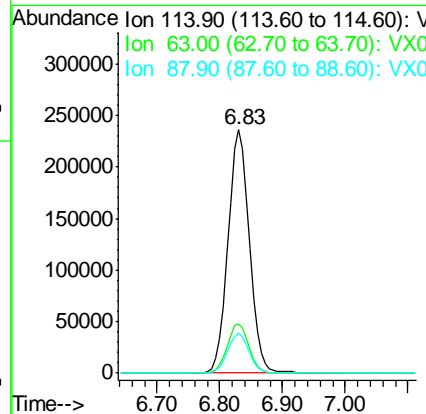
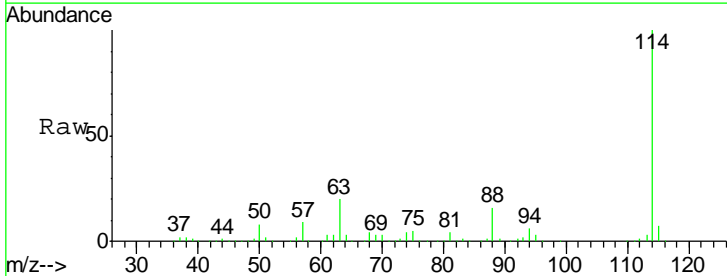
Instrument :
 MSVOA_X
 ClientSampled :
 PB132785ZHE#07

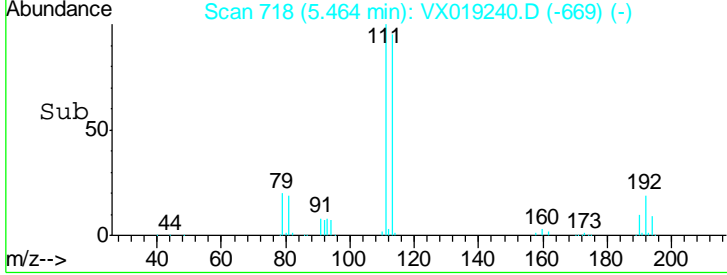
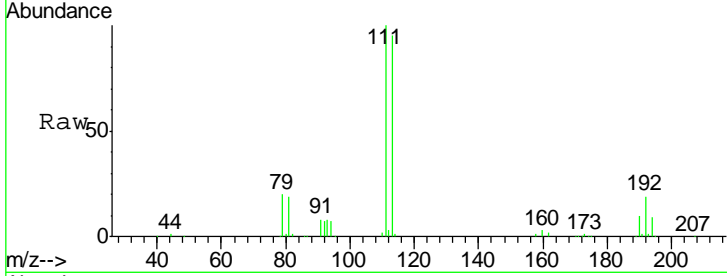
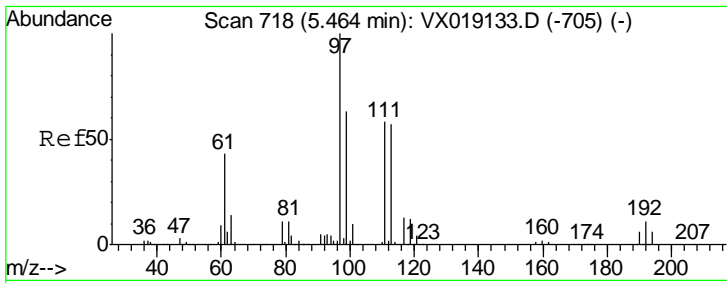
Tot Ion: 65 Resp: 213048
 Ion Ratio Lower Upper
 65 100
 67 51.5 0.0 103.0



#34
 1,4-Difluorobenzene
 Concen: 50.000 ug/l
 RT: 6.83 min Scan# 942
 Delta R.T. -0.00 min
 Lab File: VX019240.D
 Acq: 03 Nov 2020 18:10

Tgt Ion: 114 Resp: 556375
 Ion Ratio Lower Upper
 114 100
 63 20.2 0.0 38.8
 88 16.3 0.0 34.2

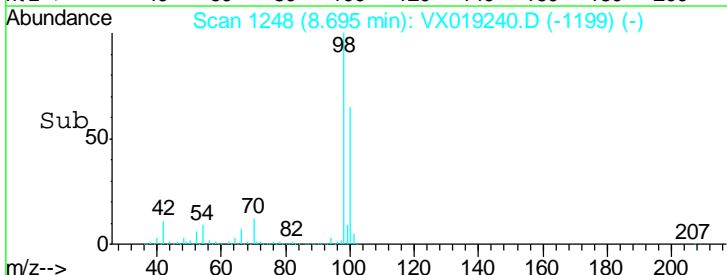
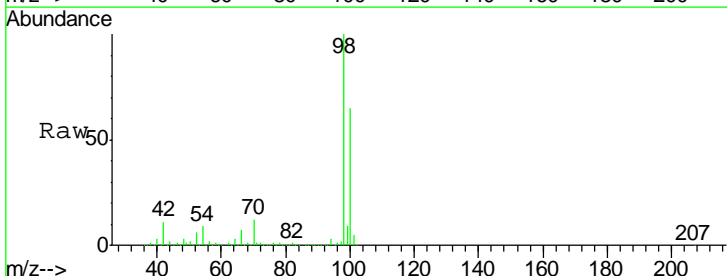
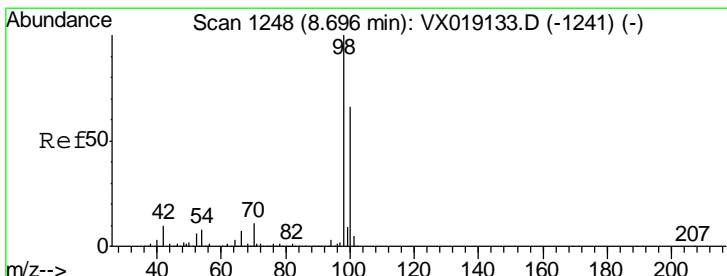
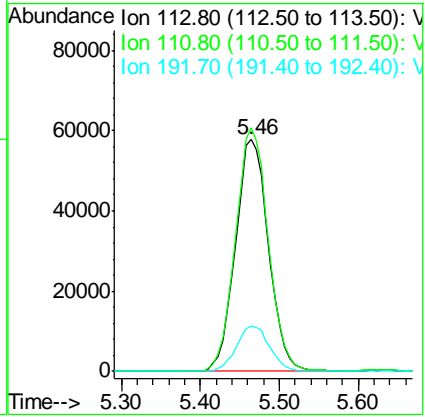




#35
 Dibromofluoromethane
 Concen: 48.252 ug/l
 RT: 5.46 min Scan# 718
 Delta R.T. -0.00 min
 Lab File: VX019240.D
 Acq: 03 Nov 2020 18:10

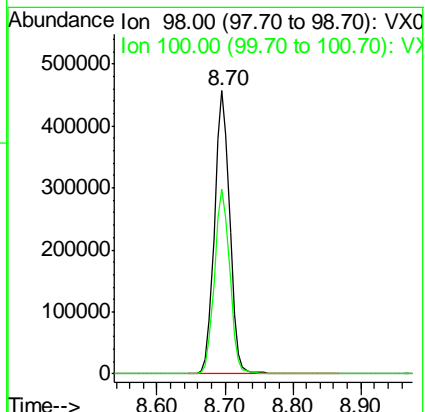
Instrument : MSVOA_X
 ClientSampleId : PB132785ZHE#07

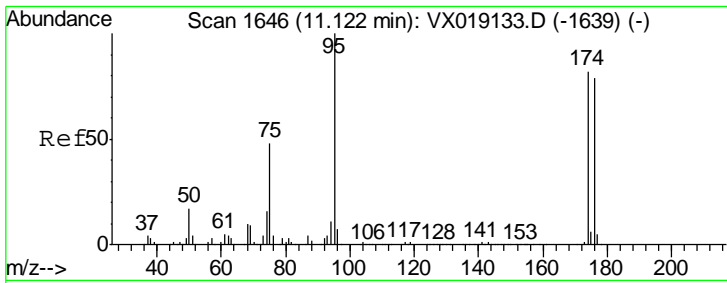
Tgt Ion	Resp	Lower	Upper
113	168629		
111	104.0	82.3	123.5
192	19.7	16.2	24.2



#50
 Toluene-d8
 Concen: 53.960 ug/l
 RT: 8.70 min Scan# 1248
 Delta R.T. -0.00 min
 Lab File: VX019240.D
 Acq: 03 Nov 2020 18:10

Tgt Ion	Resp	Lower	Upper
98	710884		
100	65.6	53.0	79.6

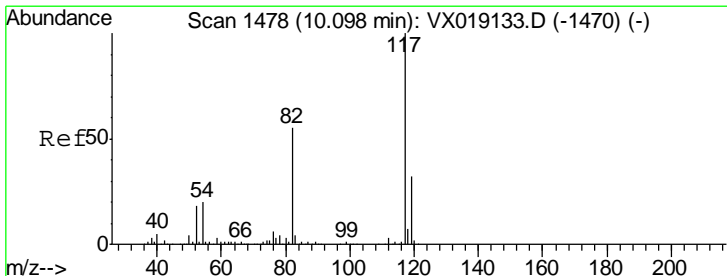
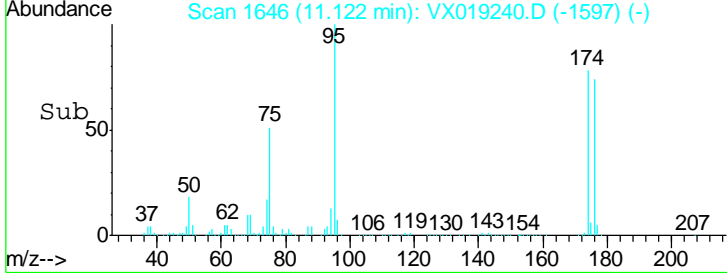
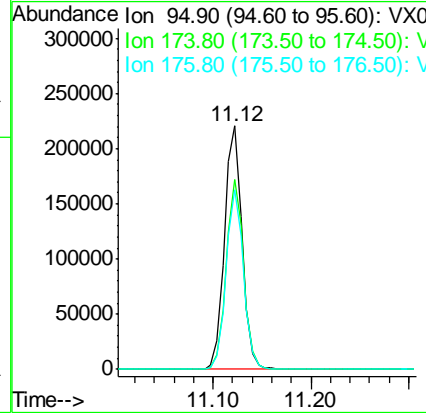
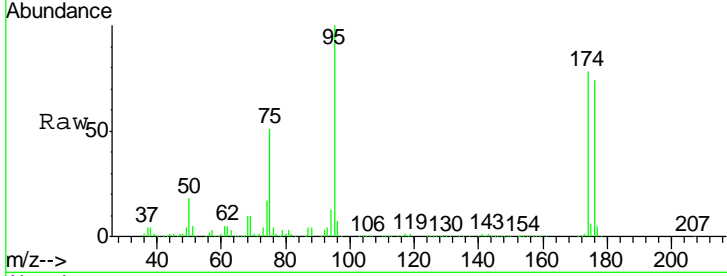




#62
 4-Bromofluorobenzene
 Concen: 54.972 ug/l
 RT: 11.12 min Scan# 1646
 Delta R.T. -0.00 min
 Lab File: VX019240.D
 Acq: 03 Nov 2020 18:10

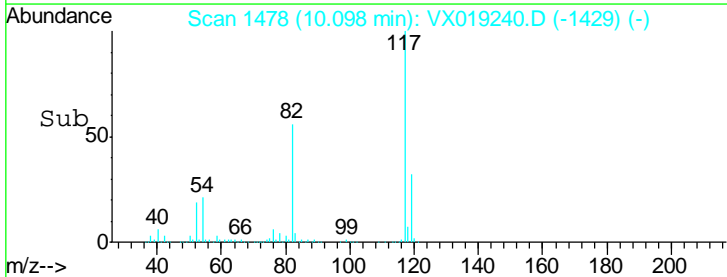
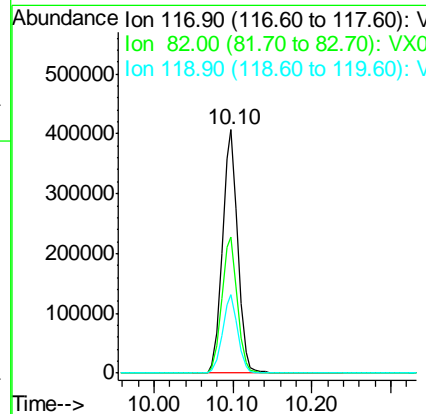
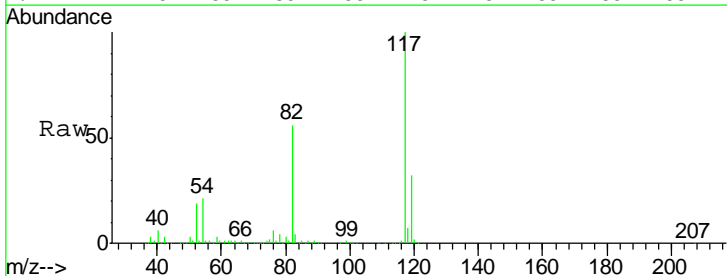
Instrument : MSVOA_X
 ClientSampleId : PB132785ZHE#07

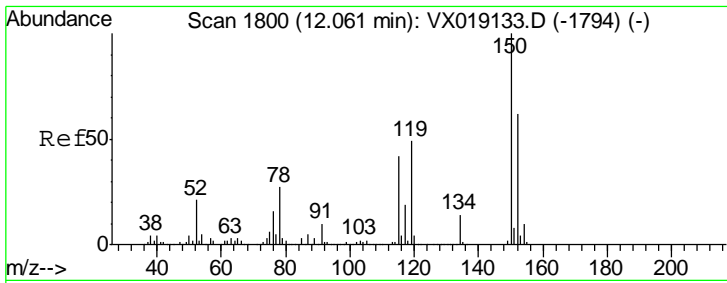
Tgt Ion	Resp	Lower	Upper
95	274261		
174	77.0	0.0	156.0
176	72.9	0.0	149.8



#63
 Chlorobenzene-d5
 Concen: 50.000 ug/l
 RT: 10.10 min Scan# 1478
 Delta R.T. -0.00 min
 Lab File: VX019240.D
 Acq: 03 Nov 2020 18:10

Tgt Ion	Resp	Lower	Upper
117	548664		
82	55.7	43.6	65.4
119	32.1	25.5	38.3





#72
 1,4-Dichlorobenzene-d4
 Concen: 50.000 ug/l
 RT: 12.06 min Scan# 1800
 Delta R.T. -0.00 min
 Lab File: VX019240.D
 Acq: 03 Nov 2020 18:10

Instrument : MSVOA_X
 ClientSampleId : PB132785ZHE#07

Tot Ion	Resp	Lower	Upper
152	100		
115	60.7	41.9	125.7
150	156.9	0.0	347.8

