

Data Path : Z:\voasrv\HPCHEM1\MSVOA\_X\Data\VX110524\  
 Data File : VX043707.D  
 Acq On : 05 Nov 2024 11:36  
 Operator : JC/MD  
 Sample : P4670-05  
 Misc : 5.0mL/MSVOA\_X/WATER  
 ALS Vial : 1 Sample Multiplier: 1

Instrument :  
 MSVOA\_X  
 ClientSampleId :  
 C0SY7

Quant Time: Nov 06 02:01:55 2024  
 Quant Method : Z:\voasrv\HPCHEM1\MSVOA\_X\Method\SFAMXLM110424WMA.M  
 Quant Title : VOC Analysis  
 QLast Update : Wed Nov 06 01:38:34 2024  
 Response via : Initial Calibration

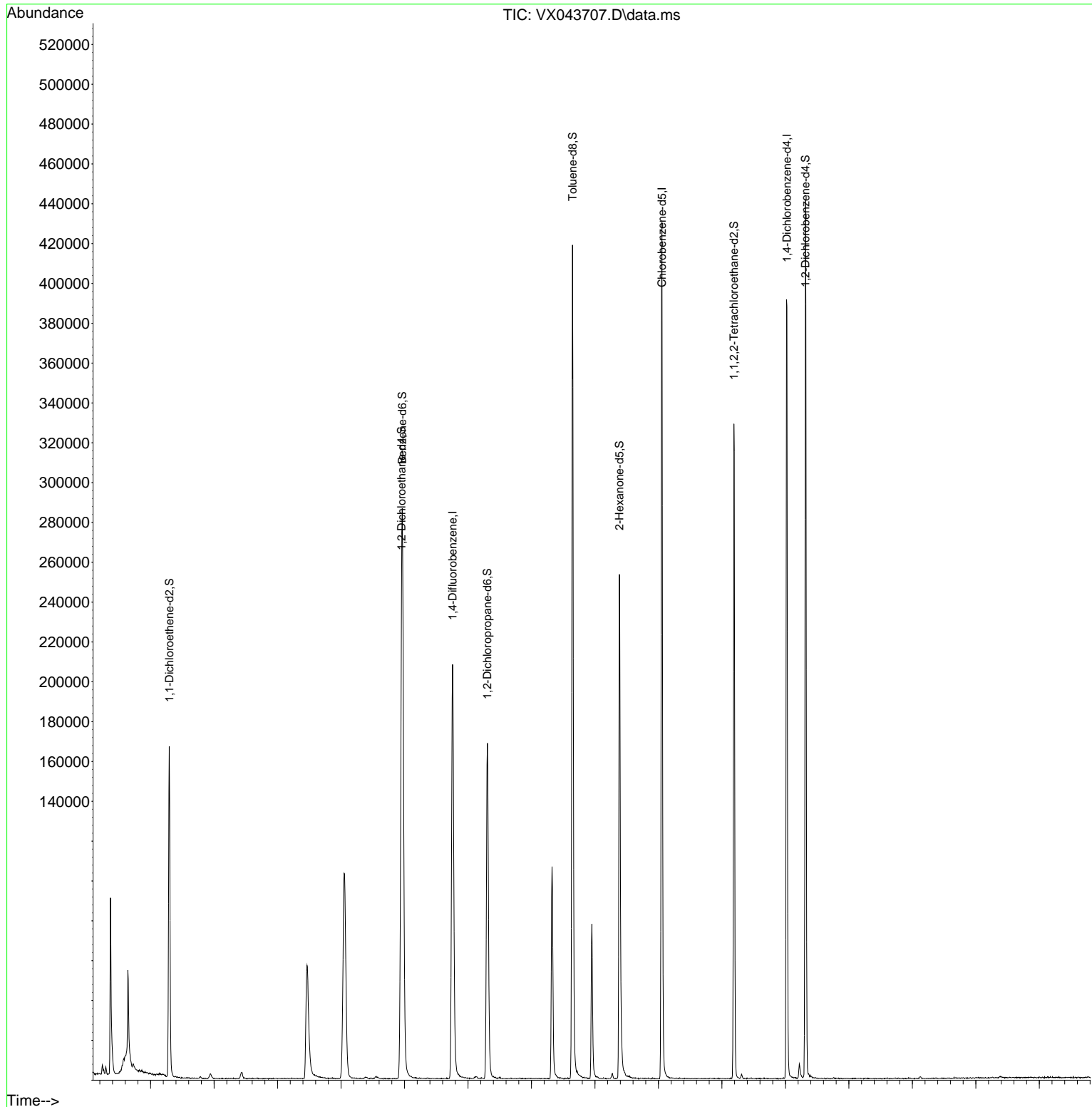
Compound	R.T.	QIon	Response	Conc	Units	Dev(Min)
-----						
Internal Standards						
1) 1,4-Difluorobenzene	6.757	114	232603	50.000	ug/L	0.00
28) Chlorobenzene-d5	10.055	117	209785	50.000	ug/L	0.00
58) 1,4-Dichlorobenzene-d4	12.024	152	89256	50.000	ug/L	0.00
System Monitoring Compounds						
4) Vinyl Chloride-d3	1.368	65	70661	57.023	ug/L	0.00
Spiked Amount	50.000	Range 60 - 135	Recovery	=	114.040%	
7) Chloroethane-d5	1.642	69	32383	60.797	ug/L	0.00
Spiked Amount	50.000	Range 70 - 130	Recovery	=	121.600%	
11) 1,1-Dichloroethene-d2	2.294	65	29665	51.858	ug/L	0.00
Spiked Amount	50.000	Range 60 - 125	Recovery	=	103.720%	
21) 2-Butanone-d5	4.465	46	107217	132.147	ug/L	0.00
Spiked Amount	100.000	Range 40 - 130	Recovery	=	132.150%#	
24) Chloroform-d	5.056	84	137663	51.533	ug/L	0.00
Spiked Amount	50.000	Range 70 - 125	Recovery	=	103.060%	
26) 1,2-Dichloroethane-d4	5.952	65	93276	54.965	ug/L	0.00
Spiked Amount	50.000	Range 70 - 125	Recovery	=	109.920%	
32) Benzene-d6	5.964	84	289943	53.458	ug/L	0.00
Spiked Amount	50.000	Range 70 - 125	Recovery	=	106.920%	
36) 1,2-Dichloropropane-d6	7.306	67	91580	55.499	ug/L	0.00
Spiked Amount	50.000	Range 70 - 120	Recovery	=	111.000%	
41) Toluene-d8	8.647	98	257906	52.345	ug/L	0.00
Spiked Amount	50.000	Range 80 - 120	Recovery	=	104.700%	
43) trans-1,3-Dichloroprop...	8.952	79	40215	50.960	ug/L	0.00
Spiked Amount	50.000	Range 60 - 125	Recovery	=	101.920%	
47) 2-Hexanone-d5	9.384	63	79454	121.668	ug/L	0.00
Spiked Amount	100.000	Range 45 - 130	Recovery	=	121.670%	
56) 1,1,2,2-Tetrachloroeth...	11.189	84	129473	61.153	ug/L	0.00
Spiked Amount	50.000	Range 65 - 120	Recovery	=	122.300%#	
66) 1,2-Dichlorobenzene-d4	12.317	152	93364	60.373	ug/L	0.00
Spiked Amount	50.000	Range 80 - 120	Recovery	=	120.740%#	
Target Compounds						
3) Chloromethane	1.295	50	2747	1.725	ug/L	90
-----						

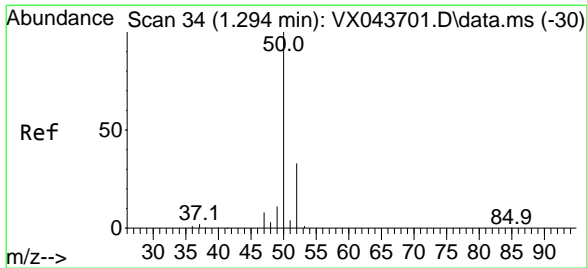
(#) = qualifier out of range (m) = manual integration (+) = signals summed

Data Path : Z:\voasrv\HPCHEM1\MSVOA\_X\Data\VX110524\  
 Data File : VX043707.D  
 Acq On : 05 Nov 2024 11:36  
 Operator : JC/MD  
 Sample : P4670-05  
 Misc : 5.0mL/MSVOA\_X/WATER  
 ALS Vial : 1 Sample Multiplier: 1

Instrument :  
 MSVOA\_X  
 ClientSampleId :  
 C0SY7

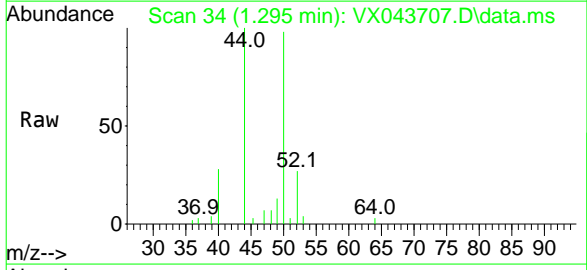
Quant Time: Nov 06 02:01:55 2024  
 Quant Method : Z:\voasrv\HPCHEM1\MSVOA\_X\Method\SFAMXLM110424WMA.M  
 Quant Title : VOC Analysis  
 QLast Update : Wed Nov 06 01:38:34 2024  
 Response via : Initial Calibration





Chloromethane  
 Concen: 1.725 ug/L  
 RT: 1.295 min Scan# 34  
 Delta R.T. 0.000 min  
 Lab File: VX043707.D  
 Acq: 05 Nov 2024 11:36

Instrument : MSVOA\_X  
 ClientSampleId : C0SY7



Tgt Ion	Resp	Ion Ratio	Lower	Upper
50	2747	100		
52		27.7	23.4	43.4

