

Data Path : Z:\voasrv\HPCHEM1\MSVOA\_X\Data\VX110524\  
 Data File : VX043708.D  
 Acq On : 05 Nov 2024 11:59  
 Operator : JC/MD  
 Sample : P4670-01  
 Misc : 5.0mL/MSVOA\_X/WATER  
 ALS Vial : 1 Sample Multiplier: 1

Instrument :  
 MSVOA\_X  
 ClientSampleId :  
 C0SY1

Quant Time: Nov 06 02:02:08 2024  
 Quant Method : Z:\voasrv\HPCHEM1\MSVOA\_X\Method\SFAMXLM110424WMA.M  
 Quant Title : VOC Analysis  
 QLast Update : Wed Nov 06 01:38:34 2024  
 Response via : Initial Calibration

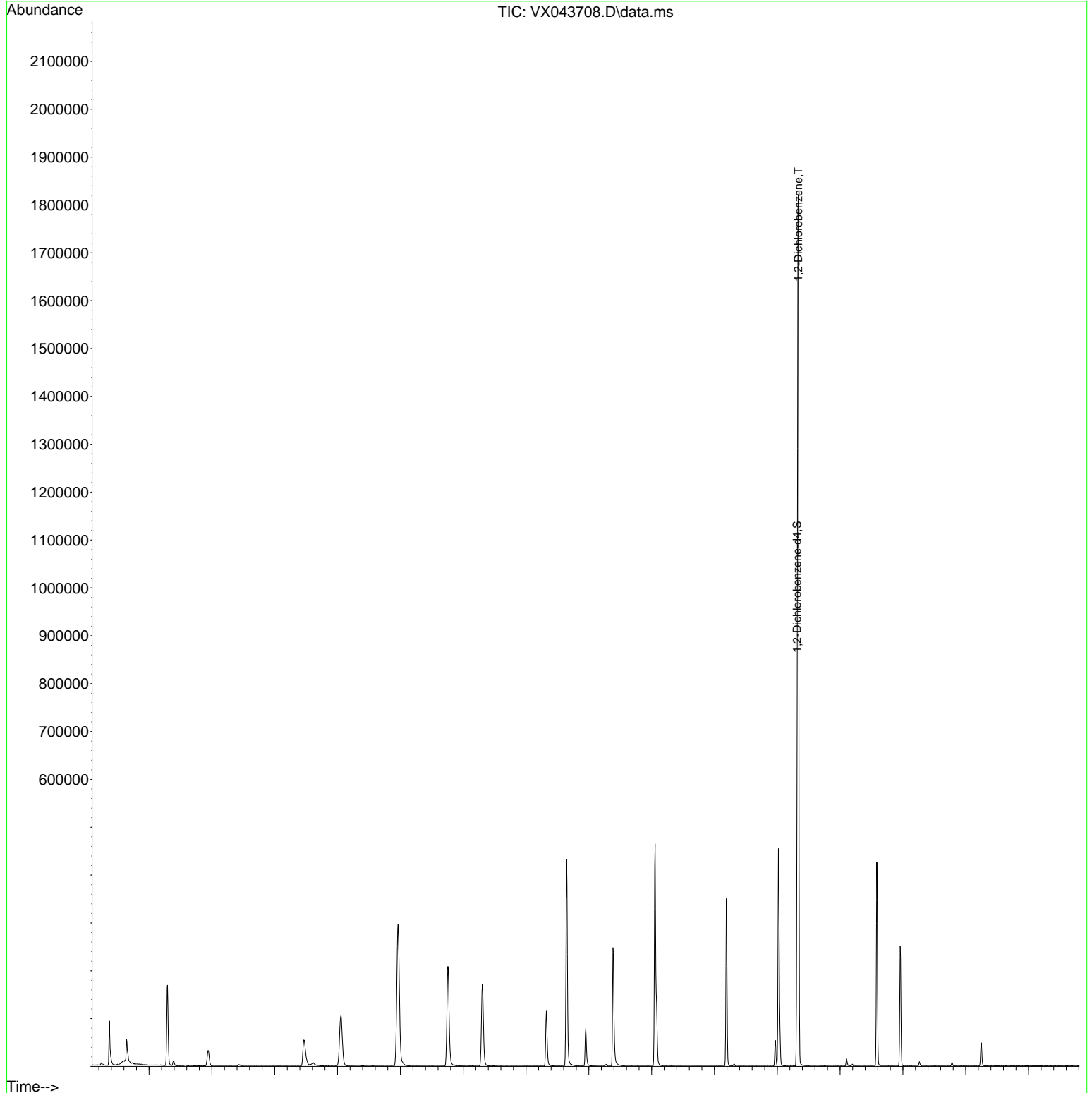
Compound	R.T.	QIon	Response	Conc	Units	Dev(Min)
-----						
Internal Standards						
1) 1,4-Difluorobenzene	6.757	114	232967	50.000	ug/L	0.00
28) Chlorobenzene-d5	10.055	117	219760	50.000	ug/L	0.00
58) 1,4-Dichlorobenzene-d4	12.024	152	100687	50.000	ug/L	0.00
System Monitoring Compounds						
4) Vinyl Chloride-d3	1.368	65	73056	58.864	ug/L	0.00
Spiked Amount	50.000	Range 60 - 135	Recovery	=	117.720%	
7) Chloroethane-d5	1.642	69	33048	61.948	ug/L	0.00
Spiked Amount	50.000	Range 70 - 130	Recovery	=	123.900%	
11) 1,1-Dichloroethene-d2	2.294	65	29604	51.671	ug/L	0.00
Spiked Amount	50.000	Range 60 - 125	Recovery	=	103.340%	
21) 2-Butanone-d5	4.465	46	101111	124.427	ug/L	0.00
Spiked Amount	100.000	Range 40 - 130	Recovery	=	124.430%	
24) Chloroform-d	5.056	84	141854	53.019	ug/L	0.00
Spiked Amount	50.000	Range 70 - 125	Recovery	=	106.040%	
26) 1,2-Dichloroethane-d4	5.952	65	93977	55.291	ug/L	0.00
Spiked Amount	50.000	Range 70 - 125	Recovery	=	110.580%	
32) Benzene-d6	5.964	84	302021	53.157	ug/L	0.00
Spiked Amount	50.000	Range 70 - 125	Recovery	=	106.320%	
36) 1,2-Dichloropropane-d6	7.306	67	92943	53.769	ug/L	0.00
Spiked Amount	50.000	Range 70 - 120	Recovery	=	107.540%	
41) Toluene-d8	8.647	98	273874	53.063	ug/L	0.00
Spiked Amount	50.000	Range 80 - 120	Recovery	=	106.120%	
43) trans-1,3-Dichloroprop...	8.952	79	40974	49.566	ug/L	0.00
Spiked Amount	50.000	Range 60 - 125	Recovery	=	99.140%	
47) 2-Hexanone-d5	9.385	63	80375	117.492	ug/L	0.00
Spiked Amount	100.000	Range 45 - 130	Recovery	=	117.490%	
56) 1,1,2,2-Tetrachloroeth...	11.189	84	129323	58.310	ug/L	0.00
Spiked Amount	50.000	Range 65 - 120	Recovery	=	116.620%	
66) 1,2-Dichlorobenzene-d4	12.317	152	107513	61.629	ug/L	0.00
Spiked Amount	50.000	Range 80 - 120	Recovery	=	123.260%#	
-----						
Target Compounds						Qvalue
13) Acetone	2.386	43	11630	15.388	ug/L	96
51) Chlorobenzene	10.080	112	57484	13.350	ug/L	98
64) 1,3-Dichlorobenzene	11.969	146	17879	5.822	ug/L	94
65) 1,4-Dichlorobenzene	12.043	146	22032	7.123	ug/L	93
67) 1,2-Dichlorobenzene	12.335	146	593586	189.146	ug/L	99
70) 1,2,4-trichlorobenzene	13.585	180	99981	53.238	ug/L	99
72) 1,2,3-Trichlorobenzene	13.957	180	59589	30.702	ug/L	99
-----						

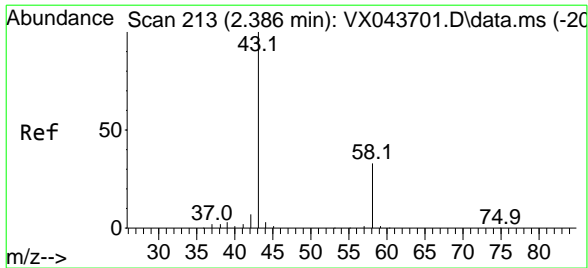
(#) = qualifier out of range (m) = manual integration (+) = signals summed

Data Path : Z:\voasrv\HPCHEM1\MSVOA\_X\Data\VX110524\  
Data File : VX043708.D  
Acq On : 05 Nov 2024 11:59  
Operator : JC/MD  
Sample : P4670-01  
Misc : 5.0mL/MSVOA\_X/WATER  
ALS Vial : 1 Sample Multiplier: 1

Instrument :  
MSVOA\_X  
ClientSampleId :  
C0SY1

Quant Time: Nov 06 02:02:08 2024  
Quant Method : Z:\voasrv\HPCHEM1\MSVOA\_X\Method\SFAMXLM110424WMA.M  
Quant Title : VOC Analysis  
QLast Update : Wed Nov 06 01:38:34 2024  
Response via : Initial Calibration

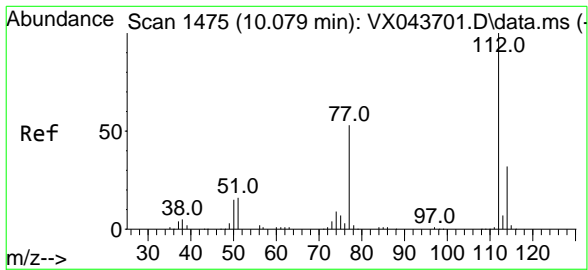
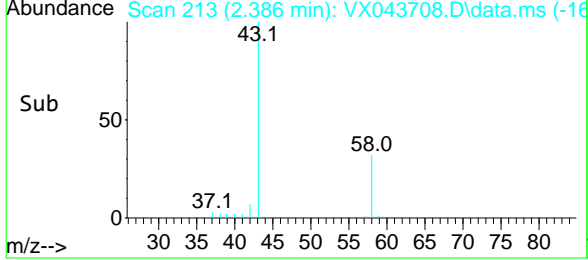
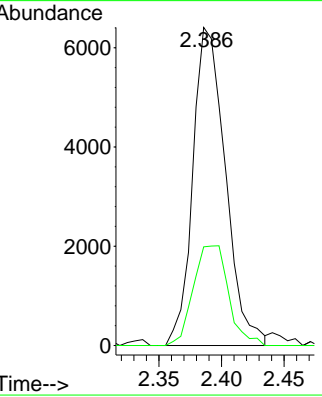
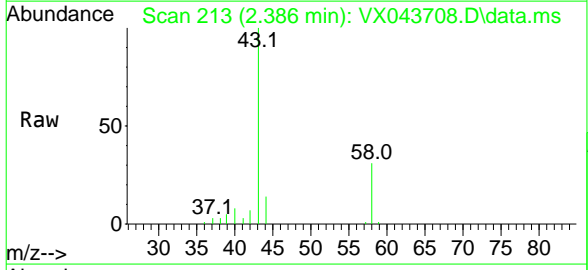




#13  
 Acetone  
 Concen: 15.388 ug/L  
 RT: 2.386 min Scan# 213  
 Delta R.T. 0.000 min  
 Lab File: VX043708.D  
 Acq: 05 Nov 2024 11:59

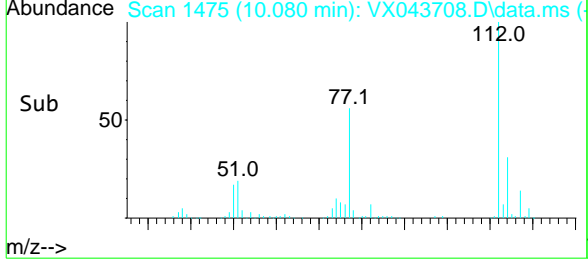
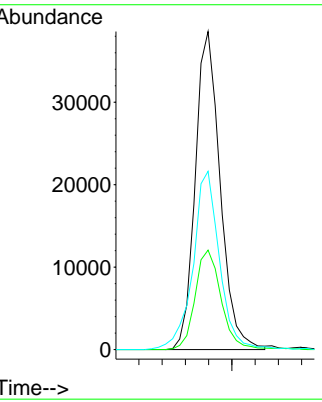
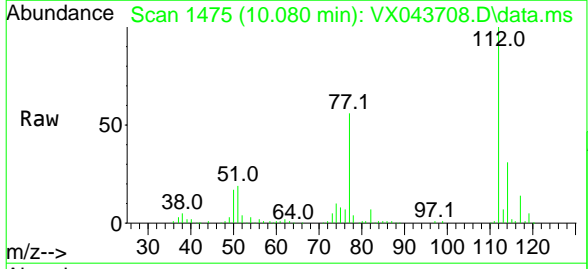
Instrument : MSVOA\_X  
 ClientSampleId : C0SY1

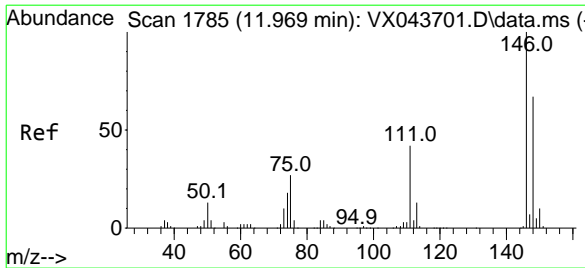
Tgt Ion	Resp	Lower	Upper
43	11630		
58	33.8	0.0	63.6



#51  
 Chlorobenzene  
 Concen: 13.350 ug/L  
 RT: 10.080 min Scan# 1475  
 Delta R.T. 0.000 min  
 Lab File: VX043708.D  
 Acq: 05 Nov 2024 11:59

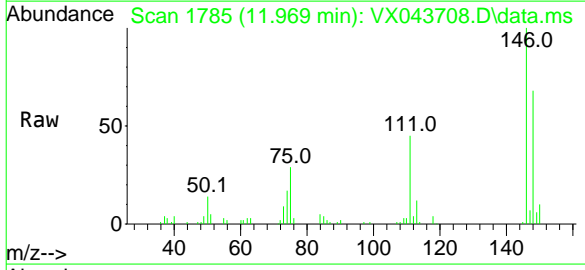
Tgt Ion	Resp	Lower	Upper
112	57484		
114	31.3	22.6	42.0
77	56.1	45.9	68.9



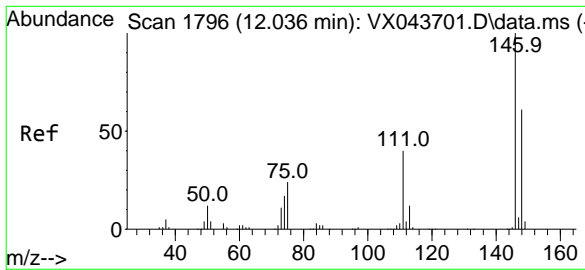
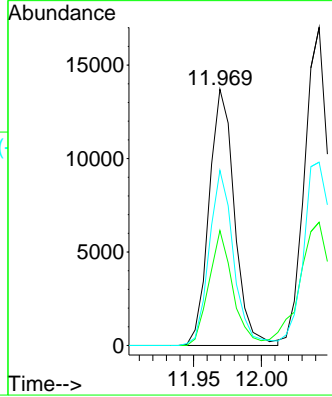
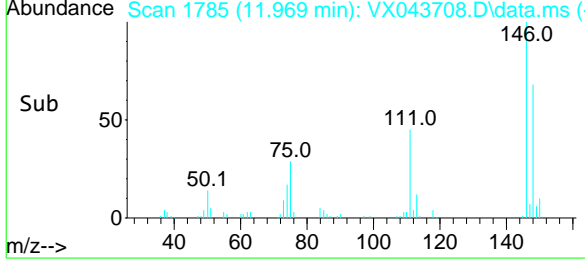


#64  
 1,3-Dichlorobenzene  
 Concen: 5.822 ug/L  
 RT: 11.969 min Scan# 1785  
 Delta R.T. 0.000 min  
 Lab File: VX043708.D  
 Acq: 05 Nov 2024 11:59

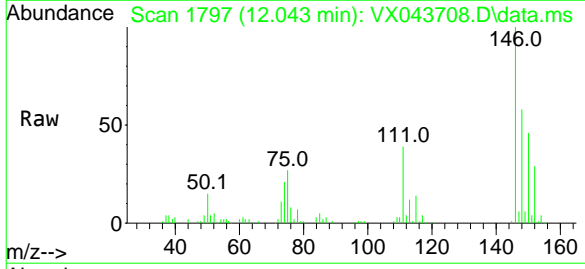
Instrument :  
 MSVOA\_X  
 ClientSampleId :  
 COSY1



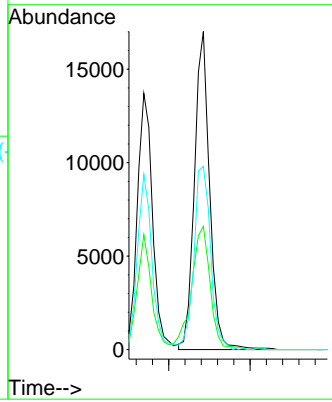
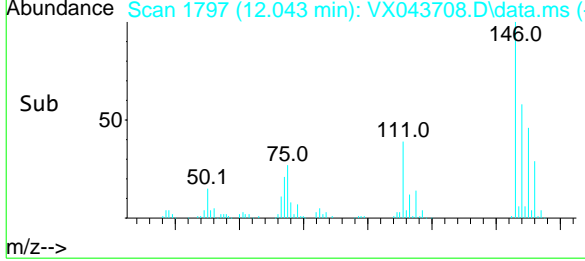
Tgt Ion:146 Resp: 17879  
 Ion Ratio Lower Upper  
 146 100  
 111 44.9 28.3 52.5  
 148 68.4 45.1 83.9

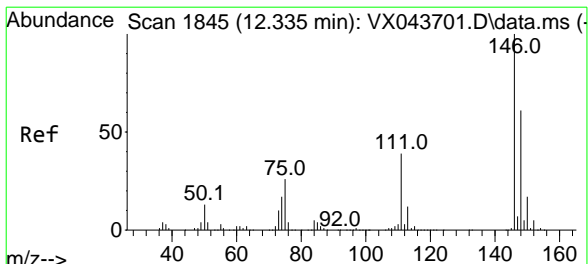


#65  
 1,4-Dichlorobenzene  
 Concen: 7.123 ug/L  
 RT: 12.043 min Scan# 1797  
 Delta R.T. 0.006 min  
 Lab File: VX043708.D  
 Acq: 05 Nov 2024 11:59



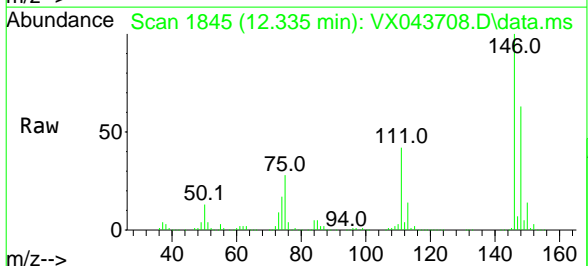
Tgt Ion:146 Resp: 22032  
 Ion Ratio Lower Upper  
 146 100  
 111 38.8 28.9 53.7  
 148 57.6 45.0 83.6





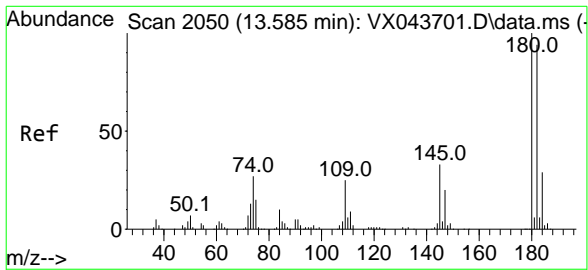
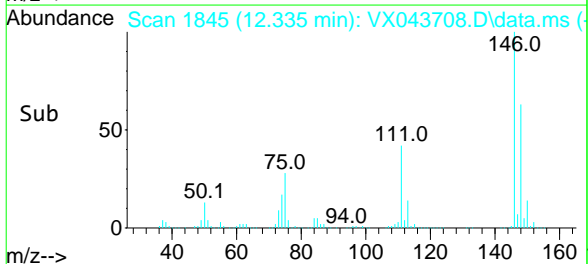
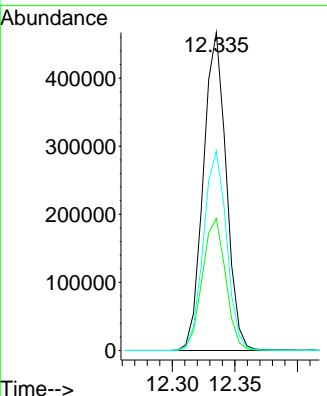
#67  
 1,2-Dichlorobenzene  
 Concen: 189.146 ug/L  
 RT: 12.335 min Scan# 1845  
 Delta R.T. 0.000 min  
 Lab File: VX043708.D  
 Acq: 05 Nov 2024 11:59

Instrument : MSVOA\_X  
 ClientSampleId : C0SY1

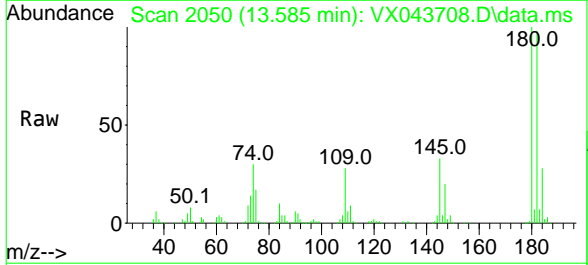


Tgt Ion:146 Resp: 593586

Ion	Ratio	Lower	Upper
146	100		
111	41.5	33.9	50.9
148	62.7	50.6	76.0

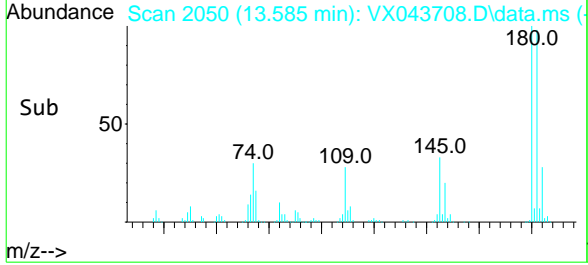
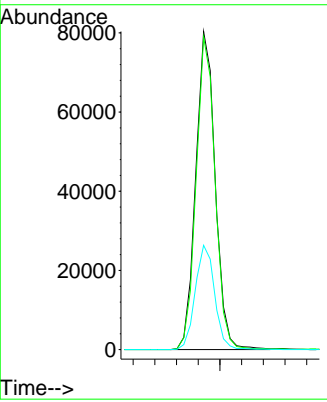


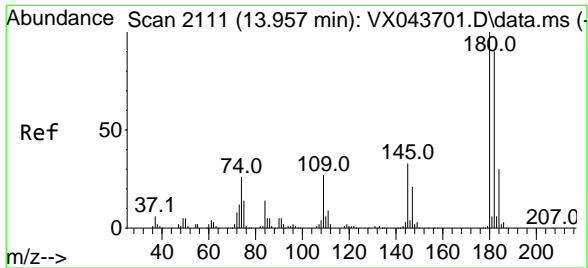
#70  
 1,2,4-trichlorobenzene  
 Concen: 53.238 ug/L  
 RT: 13.585 min Scan# 2050  
 Delta R.T. 0.000 min  
 Lab File: VX043708.D  
 Acq: 05 Nov 2024 11:59



Tgt Ion:180 Resp: 99981

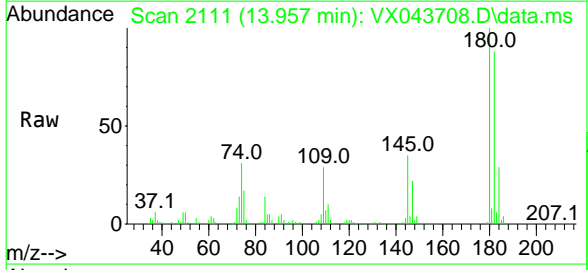
Ion	Ratio	Lower	Upper
180	100		
182	95.7	75.9	113.9
145	32.6	26.9	40.3





#72  
 1,2,3-Trichlorobenzene  
 Concen: 30.702 ug/L  
 RT: 13.957 min Scan# 2111  
 Delta R.T. 0.000 min  
 Lab File: VX043708.D  
 Acq: 05 Nov 2024 11:59

Instrument : MSVOA\_X  
 ClientSampleId : C0SY1



Tgt Ion	Resp	Lower	Upper
180	59589		
180	100		
182	95.1	75.8	113.8
145	33.4	28.4	42.6

