

Data Path : Z:\voasrv\HPCHEM1\MSVOA_X\Data\VX110524\
 Data File : VX043714.D
 Acq On : 05 Nov 2024 14:27
 Operator : JC/MD
 Sample : P4621-06RE
 Misc : 5.0mL/MSVOA_X/WATER
 ALS Vial : 1 Sample Multiplier: 1

Instrument :
 MSVOA_X
 ClientSampleId :
 BH6N2RE

Manual Integrations
 APPROVED

Reviewed By :Mahesh Dadoda 11/06/2024
 Supervised By :Semsettin Yesilyurt 11/06/2024

Quant Time: Nov 06 02:03:36 2024
 Quant Method : Z:\voasrv\HPCHEM1\MSVOA_X\Method\SFAMXLM110424WMA.M
 Quant Title : VOC Analysis
 QLast Update : Wed Nov 06 01:38:34 2024
 Response via : Initial Calibration

Compound	R.T.	QIon	Response	Conc	Units	Dev(Min)

Internal Standards						
1) 1,4-Difluorobenzene	6.763	114	158186	50.000	ug/L	0.00
28) Chlorobenzene-d5	10.055	117	148081	50.000	ug/L	0.00
58) 1,4-Dichlorobenzene-d4	12.024	152	64122	50.000	ug/L	0.00
System Monitoring Compounds						
4) Vinyl Chloride-d3	1.368	65	69797	82.824	ug/L	0.00
Spiked Amount	50.000	Range 60 - 135	Recovery	=	165.640%#	
7) Chloroethane-d5	1.648	69	34770m	95.988	ug/L	0.00
Spiked Amount	50.000	Range 70 - 130	Recovery	=	191.980%#	
11) 1,1-Dichloroethene-d2	2.294	65	28903	74.296	ug/L	0.00
Spiked Amount	50.000	Range 60 - 125	Recovery	=	148.600%#	
21) 2-Butanone-d5	4.465	46	106759	193.485	ug/L	0.00
Spiked Amount	100.000	Range 40 - 130	Recovery	=	193.480%#	
24) Chloroform-d	5.050	84	146847	80.832	ug/L	0.00
Spiked Amount	50.000	Range 70 - 125	Recovery	=	161.660%#	
26) 1,2-Dichloroethane-d4	5.952	65	93822	81.295	ug/L	0.00
Spiked Amount	50.000	Range 70 - 125	Recovery	=	162.600%#	
32) Benzene-d6	5.970	84	310248	81.037	ug/L	0.00
Spiked Amount	50.000	Range 70 - 125	Recovery	=	162.080%#	
36) 1,2-Dichloropropane-d6	7.306	67	97700	83.879	ug/L	0.00
Spiked Amount	50.000	Range 70 - 120	Recovery	=	167.760%#	
41) Toluene-d8	8.647	98	274933	79.053	ug/L	0.00
Spiked Amount	50.000	Range 80 - 120	Recovery	=	158.100%#	
43) trans-1,3-Dichloroprop...	8.952	79	40145	72.070	ug/L	0.00
Spiked Amount	50.000	Range 60 - 125	Recovery	=	144.140%#	
47) 2-Hexanone-d5	9.384	63	78721	170.776	ug/L	0.00
Spiked Amount	100.000	Range 45 - 130	Recovery	=	170.780%#	
56) 1,1,2,2-Tetrachloroeth...	11.189	84	124814	83.517	ug/L	0.00
Spiked Amount	50.000	Range 65 - 120	Recovery	=	167.040%#	
66) 1,2-Dichlorobenzene-d4	12.317	152	101211	91.100	ug/L	0.00
Spiked Amount	50.000	Range 80 - 120	Recovery	=	182.200%#	
Target Compounds						
13) Acetone	2.386	43	8974	17.487	ug/L	98

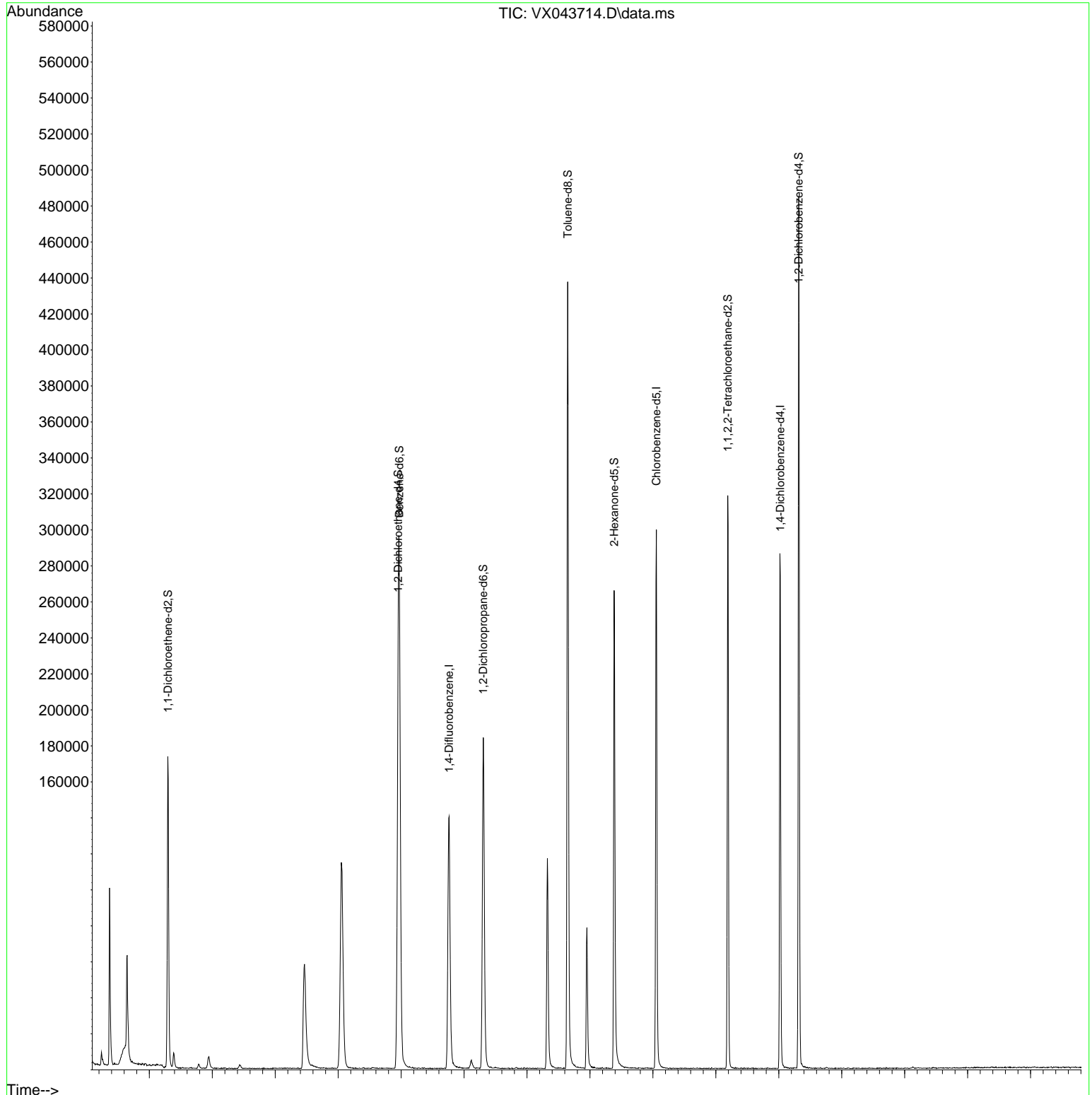
(#) = qualifier out of range (m) = manual integration (+) = signals summed

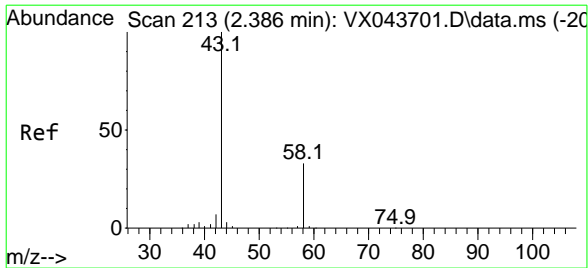
Data Path : Z:\voasrv\HPCHEM1\MSVOA_X\Data\VX110524\
 Data File : VX043714.D
 Acq On : 05 Nov 2024 14:27
 Operator : JC/MD
 Sample : P4621-06RE
 Misc : 5.0mL/MSVOA_X/WATER
 ALS Vial : 1 Sample Multiplier: 1

Instrument :
 MSVOA_X
ClientSampleId :
 BH6N2RE

Manual Integrations
APPROVED
 Reviewed By :Mahesh Dadoda 11/06/2024
 Supervised By :Semsettin Yesilyurt 11/06/2024

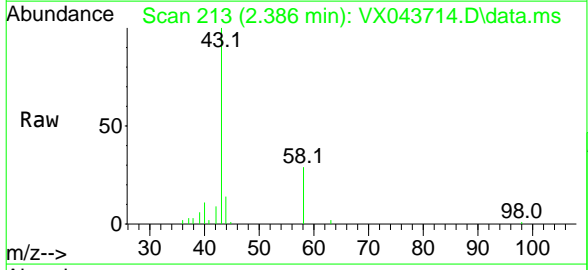
Quant Time: Nov 06 02:03:36 2024
 Quant Method : Z:\voasrv\HPCHEM1\MSVOA_X\Method\SFAMXLM110424WMA.M
 Quant Title : VOC Analysis
 QLast Update : Wed Nov 06 01:38:34 2024
 Response via : Initial Calibration





#13
 Acetone
 Concen: 17.487 ug/L
 RT: 2.386 min Scan# 21
 Delta R.T. 0.000 min
 Lab File: VX043714.D
 Acq: 05 Nov 2024 14:27

Instrument : MSVOA_X
 ClientSampleId : BH6N2RE



Tgt Ion: 43 Resp: 8974
 Ion Ratio Lower Upper
 43 100
 58 33.2 0.0 63.6

Manual Integrations
APPROVED
 Reviewed By :Mahesh Dadoda 11/06/2024
 Supervised By :Semsettin Yesilyurt 11/06/2024

