

Data Path : Z:\VOASRV\HPCHEM1\MSVOA X\DATA\VX110620\
 Data File : VX019301.D
 Acq On : 05 Nov 2020 10:15
 Operator : JC/MD
 Sample : VX1106WBL02
 Misc : 5.0mL/MSVOA X/WATER
 ALS Vial : 29 Sample Multiplier: 1

Instrument :
 MSVOA_X
 ClientSampleId :

Quant Time: Nov 06 01:06:29 2020
 Quant Method : Z:\VOASRV\HPCHEM1\MSVOA_X\METHOD\82X102720W.M
 Quant Title : SW846 8260
 QLast Update : Tue Oct 27 13:55:07 2020
 Response via : Initial Calibration

Internal Standards	R.T.	QIon	Response	Conc	Units	Dev(Min)
1) Pentafluorobenzene	5.62	168	310273	50.00	ug/l	0.00
34) 1,4-Difluorobenzene	6.82	114	543284	50.00	ug/l	0.00
63) Chlorobenzene-d5	10.09	117	499451	50.00	ug/l	0.00
72) 1,4-Dichlorobenzene-d4	12.06	152	238093	50.00	ug/l	0.00

System Monitoring Compounds

33) 1,2-Dichloroethane-d4	6.03	65	214578	53.63	ug/l	0.00
Spiked Amount	50.000		Recovery	=	107.26%	
35) Dibromofluoromethane	5.46	113	172414	50.52	ug/l	0.00
Spiked Amount	50.000		Recovery	=	101.04%	
50) Toluene-d8	8.70	98	661855	51.45	ug/l	0.00
Spiked Amount	50.000		Recovery	=	102.90%	
62) 4-Bromofluorobenzene	11.12	95	240986	49.47	ug/l	0.00
Spiked Amount	50.000		Recovery	=	98.94%	

Target Compounds

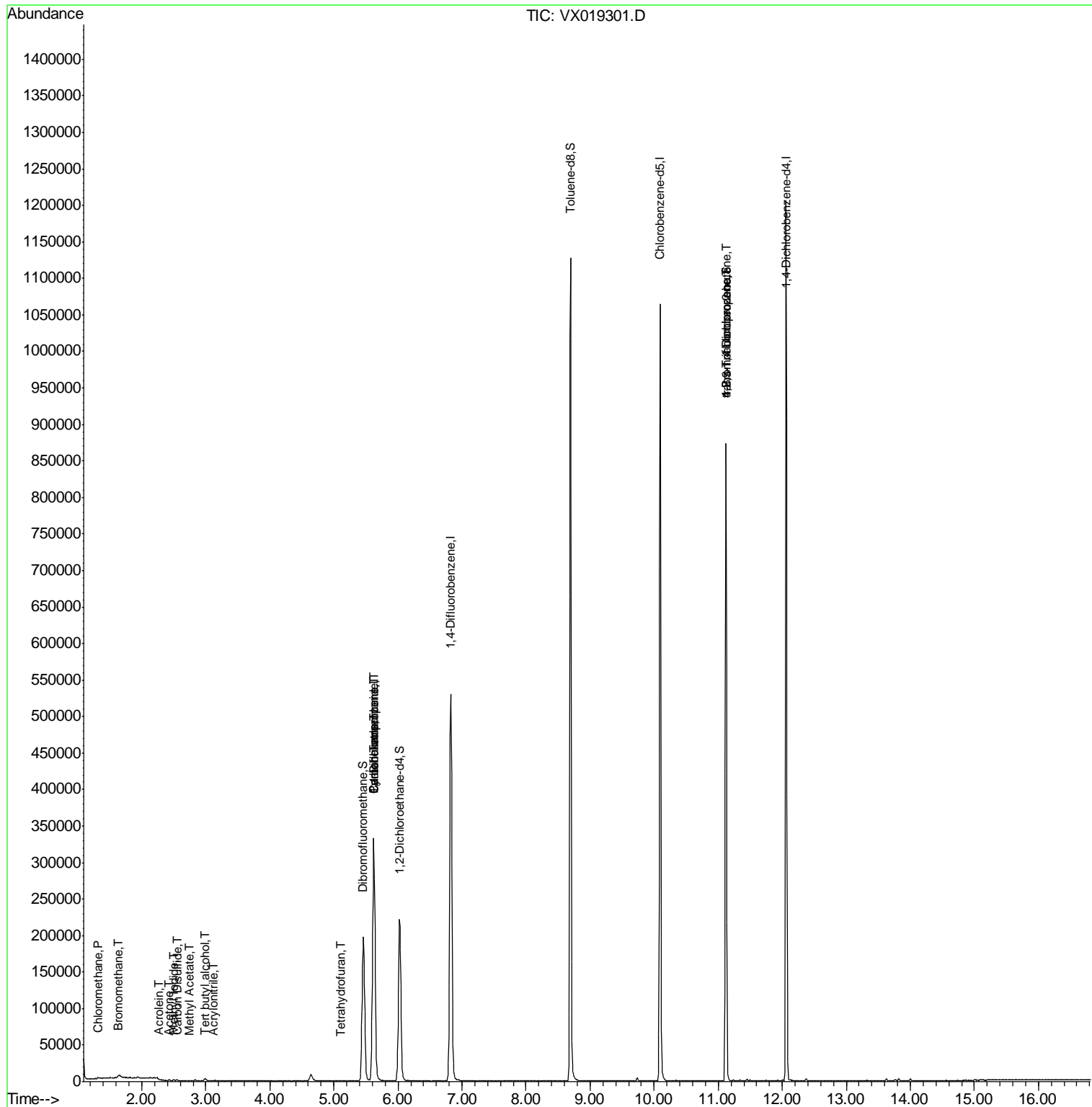
						Qvalue
3) Chloromethane	1.31	50	760	0.263	ug/l	98
5) Bromomethane	1.64	94	1275	0.557	ug/l	98
10) Methyl Iodide	2.50	142	1789	6.832	ug/l	99
11) Tert butyl alcohol	2.99	59	1961	2.481	ug/l #	72
13) Acrolein	2.27	56	261	6.370	ug/l	96
15) Acrylonitrile	3.11	53	521	0.314	ug/l	98
16) Acetone	2.43	43	916	0.664	ug/l	95
17) Carbon Disulfide	2.55	76	1706	0.956	ug/l #	84
18) Methyl Acetate	2.75	43	679	0.202	ug/l #	47
29) Tetrahydrofuran	5.10	42	340	0.248	ug/l #	26
31) Cyclohexane	5.62	56	6805	1.345	ug/l #	1
36) 1,1-Dichloropropene	5.62	75	26729	5.328	ug/l #	49
38) Carbon Tetrachloride	5.62	117	32209	6.299	ug/l #	17
76) 1,2,3-Trichloropropane	11.12	75	123892	25.201	ug/l #	37
81) trans-1,4-Dichloro-2-buten	11.12	75	123892	66.355	ug/l #	12

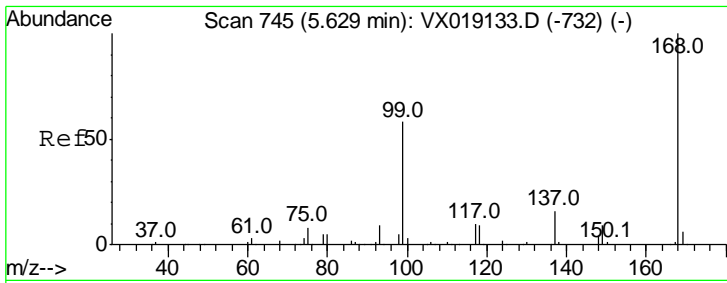
(#) = qualifier out of range (m) = manual integration (+) = signals summed

Data Path : Z:\VOASRV\HPCHEM1\MSVOA X\DATA\VX110620\
 Data File : VX019301.D
 Acq On : 05 Nov 2020 10:15
 Operator : JC/MD
 Sample : VX1106WBL02
 Misc : 5.0mL/MSVOA X/WATER
 ALS Vial : 29 Sample Multiplier: 1

Instrument :
 MSVOA_X
 ClientSampled :

Quant Time: Nov 06 01:06:29 2020
 Quant Method : Z:\VOASRV\HPCHEM1\MSVOA_X\METHOD\82X102720W.M
 Quant Title : SW846 8260
 QLast Update : Tue Oct 27 13:55:07 2020
 Response via : Initial Calibration

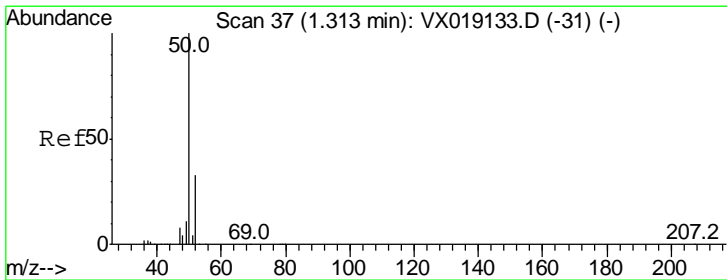
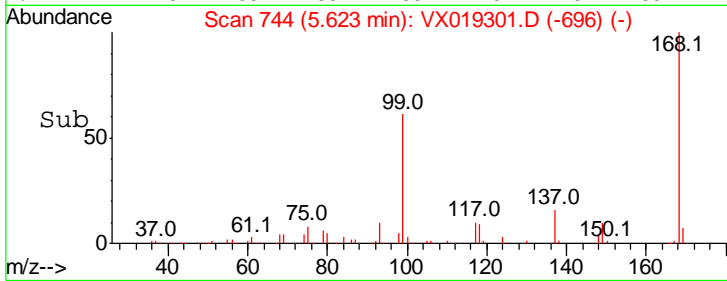
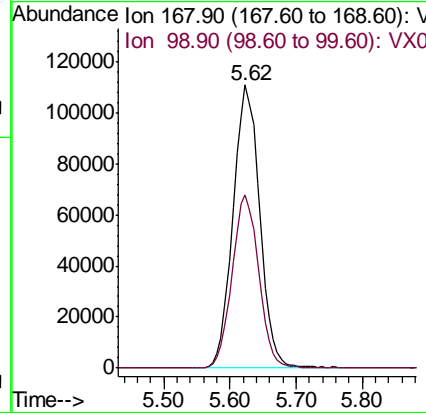
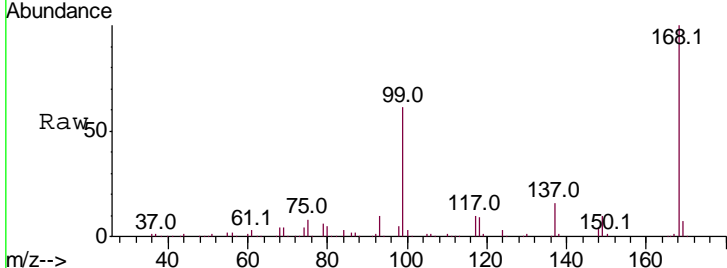




#1
 Pentafluorobenzene
 Concen: 50.000 ug/l
 RT: 5.62 min Scan# 744
 Delta R.T. -0.01 min
 Lab File: VX019301.D
 Acq: 05 Nov 2020 10:15

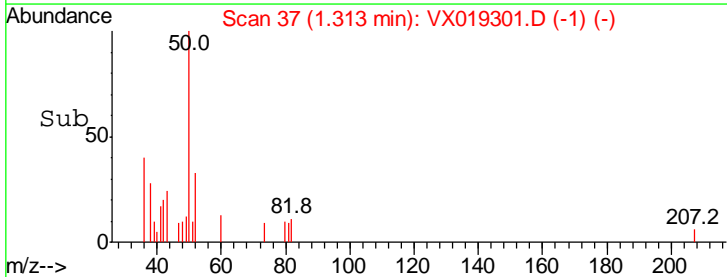
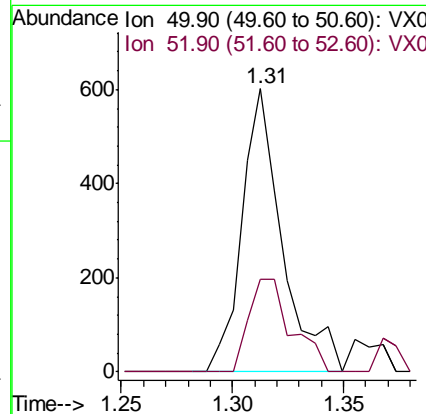
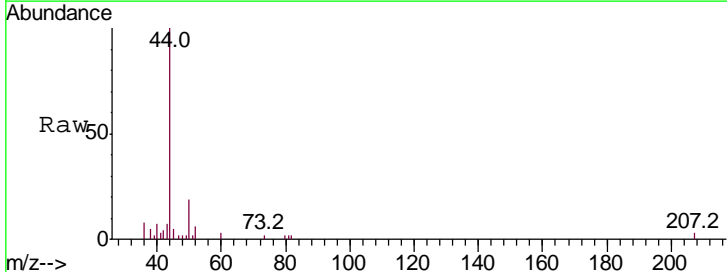
Instrument : MSVOA_X
 ClientSampled :

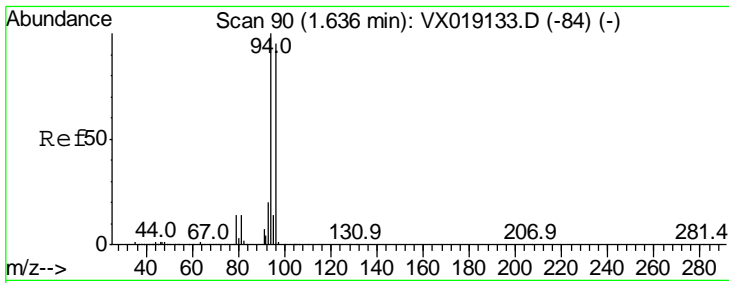
Tgt Ion: 168 Resp: 310273
 Ion Ratio Lower Upper
 168 100
 99 61.4 46.6 69.8



#3
 Chloromethane
 Concen: 0.263 ug/l
 RT: 1.31 min Scan# 37
 Delta R.T. -0.00 min
 Lab File: VX019301.D
 Acq: 05 Nov 2020 10:15

Tgt Ion: 50 Resp: 760
 Ion Ratio Lower Upper
 50 100
 52 32.6 26.8 40.2

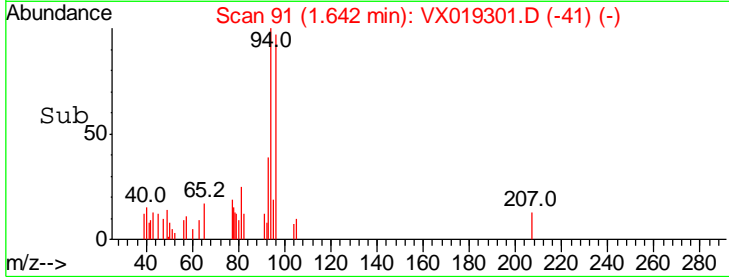
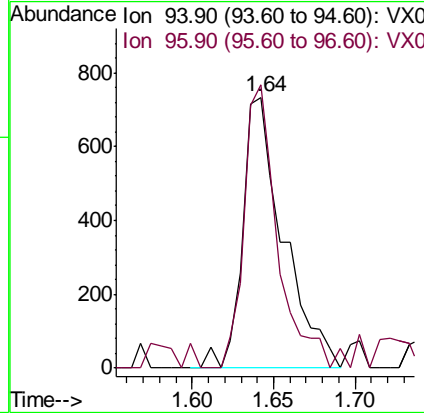
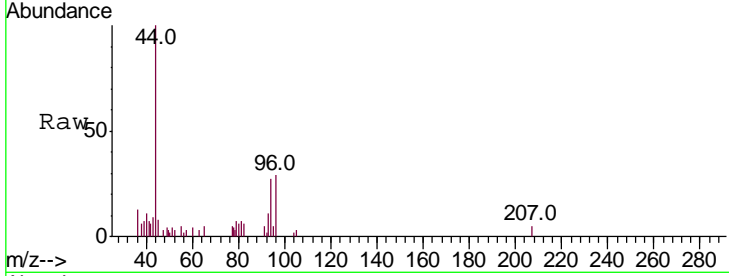




#5
 Bromomethane
 Concen: 0.557 ug/l
 RT: 1.64 min Scan# 91
 Delta R.T. 0.01 min
 Lab File: VX019301.D
 Acq: 05 Nov 2020 10:15

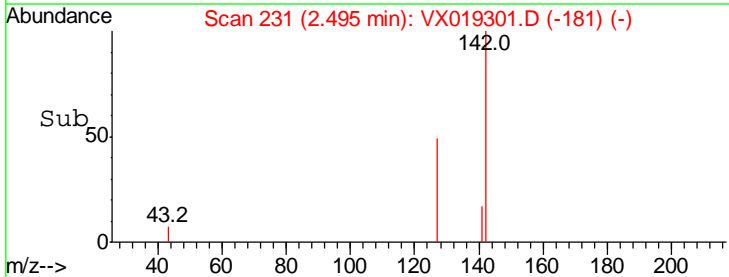
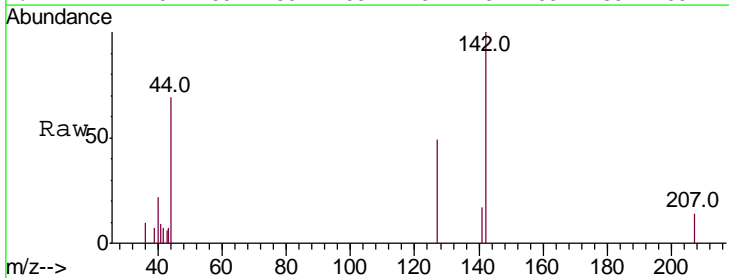
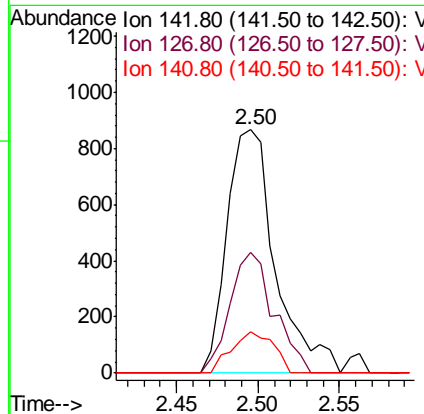
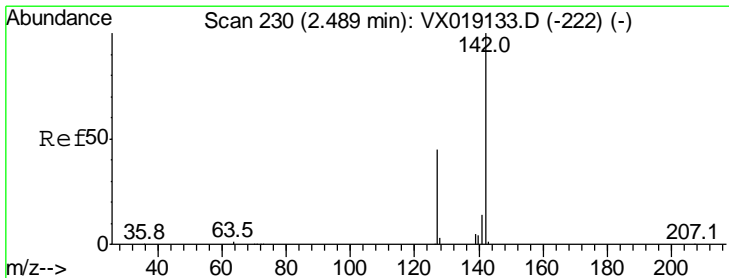
Instrument : MSVOA_X
 ClientSampled :

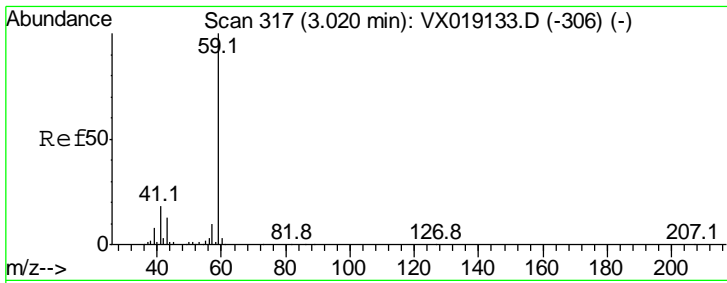
Tgt Ion	Resp	Lower	Upper
94	1275		
96	97.0	76.0	114.0



#10
 Methyl Iodide
 Concen: 6.832 ug/l
 RT: 2.50 min Scan# 231
 Delta R.T. 0.01 min
 Lab File: VX019301.D
 Acq: 05 Nov 2020 10:15

Tgt Ion	Resp	Lower	Upper
142	1789		
127	44.8	36.1	54.1
141	14.8	11.3	16.9

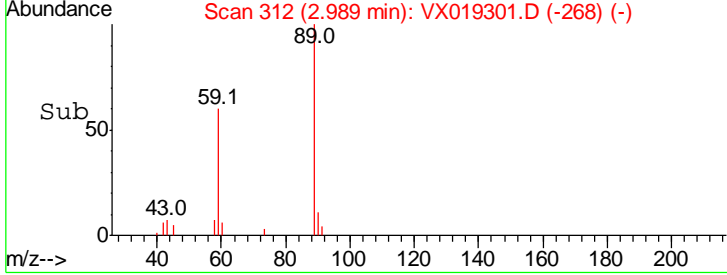
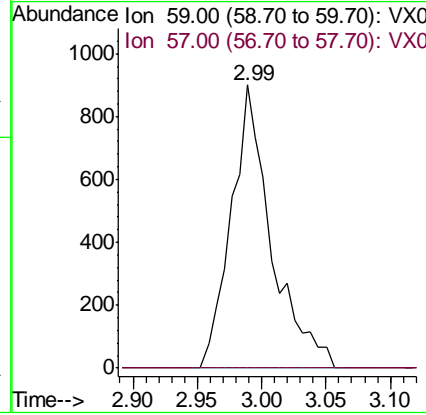
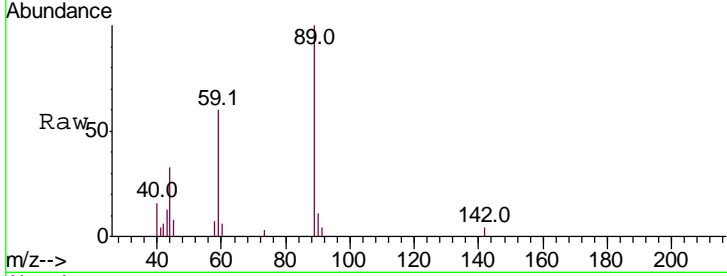




#11
 Tert butyl alcohol
 Concen: 2.481 ug/l
 RT: 2.99 min Scan# 312
 Delta R.T. -0.03 min
 Lab File: VX019301.D
 Acq: 05 Nov 2020 10:15

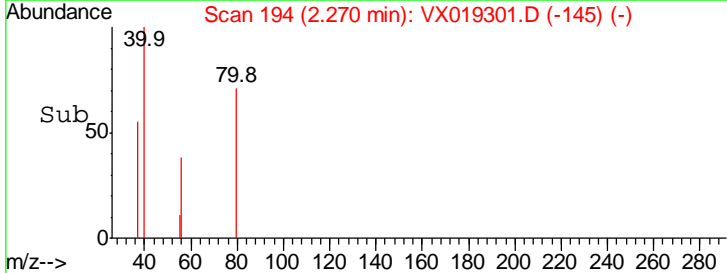
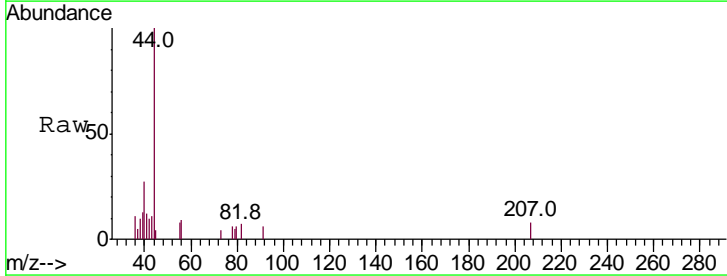
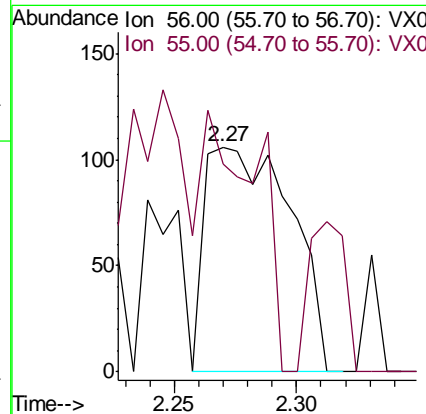
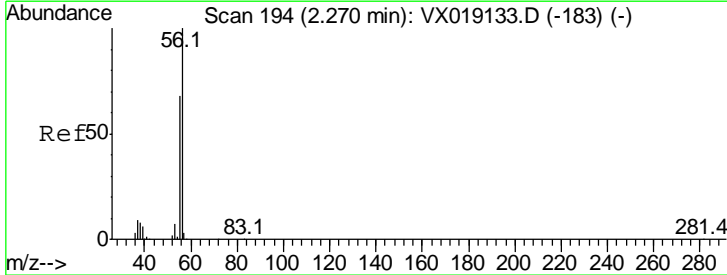
Instrument :
 MSVOA_X
 ClientSampled :

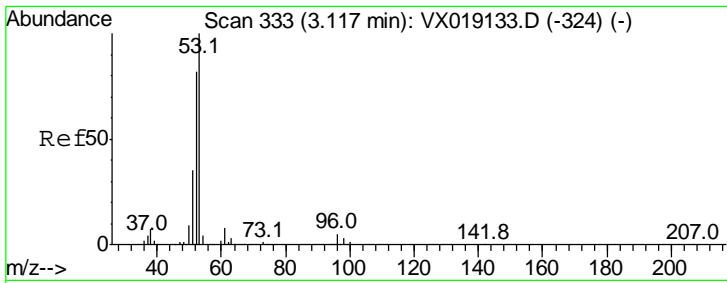
Tgt Ion	Resp	Lower	Upper
59	100		
57	0.0	8.4	12.6#



#13
 Acrolein
 Concen: 6.370 ug/l
 RT: 2.27 min Scan# 194
 Delta R.T. 0.00 min
 Lab File: VX019301.D
 Acq: 05 Nov 2020 10:15

Tgt Ion	Resp	Lower	Upper
56	100		
55	72.0	54.7	82.1

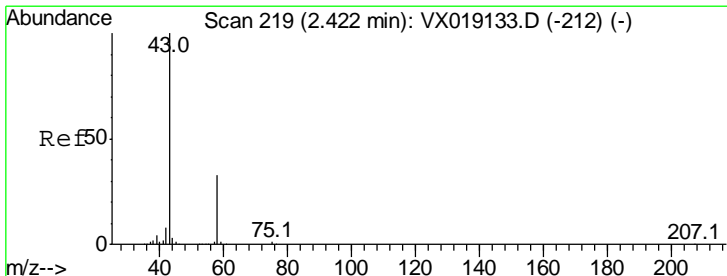
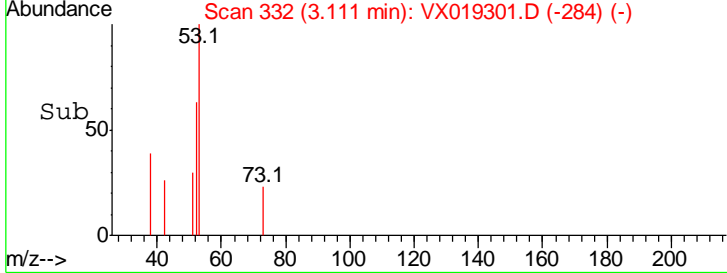
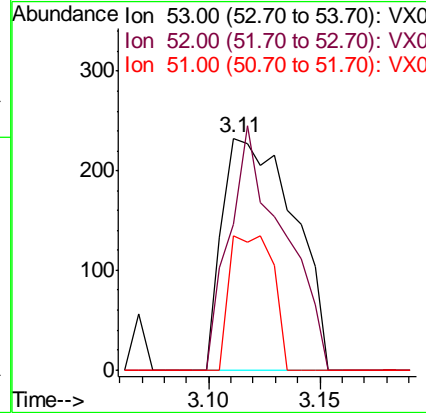
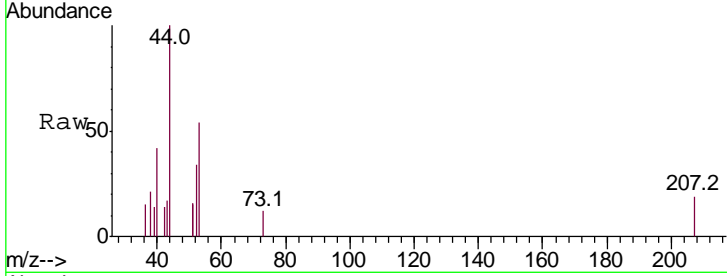




#15
 Acrylonitrile
 Concen: 0.314 ug/l
 RT: 3.11 min Scan# 332
 Delta R.T. -0.01 min
 Lab File: VX019301.D
 Acq: 05 Nov 2020 10:15

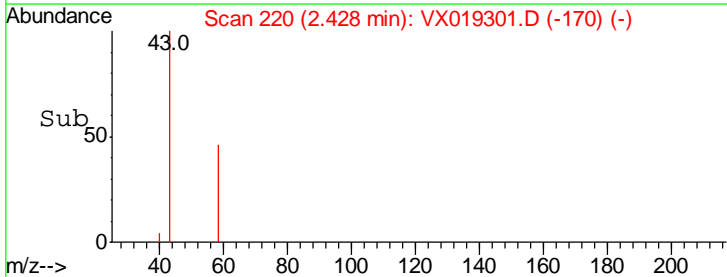
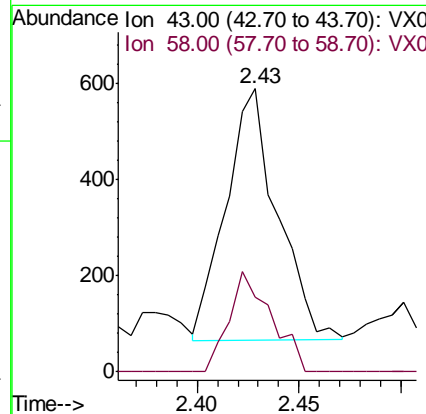
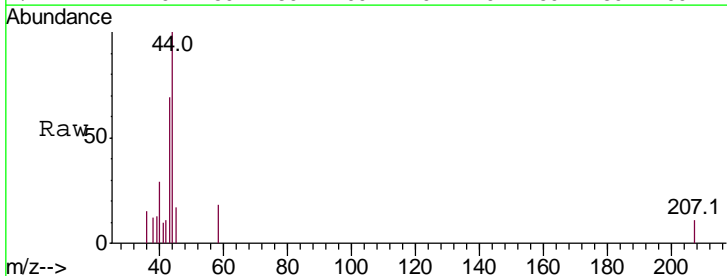
Instrument :
 MSVOA_X
 ClientSampled :

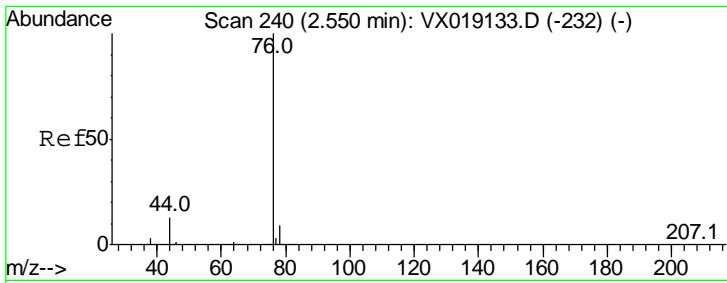
Tgt Ion	Resp	Lower	Upper
53	100		
52	79.1	65.7	98.5
51	35.3	28.4	42.6



#16
 Acetone
 Concen: 0.664 ug/l
 RT: 2.43 min Scan# 220
 Delta R.T. 0.01 min
 Lab File: VX019301.D
 Acq: 05 Nov 2020 10:15

Tgt Ion	Resp	Lower	Upper
43	100		
58	30.2	26.3	39.5

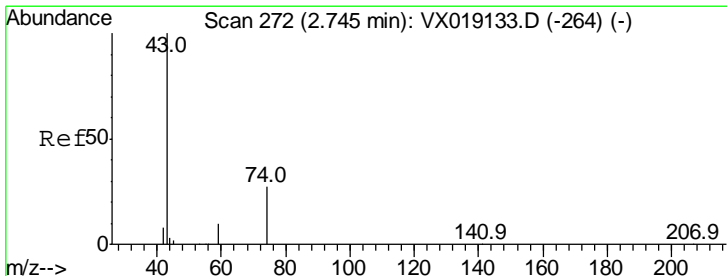
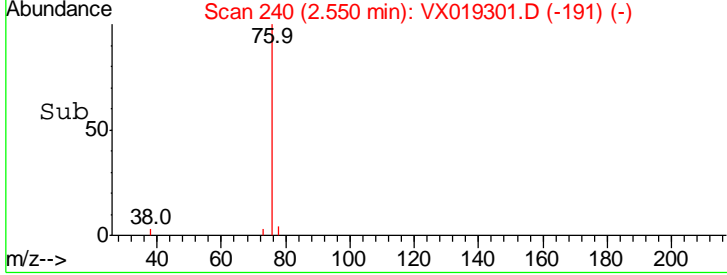
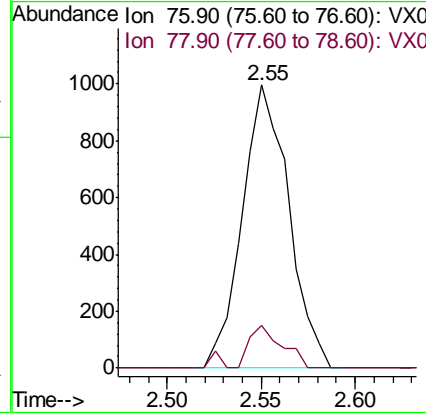
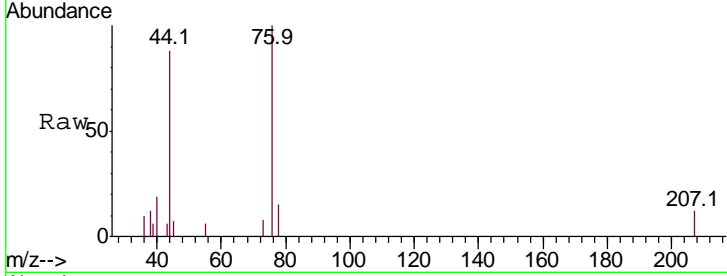




#17
 Carbon Disulfide
 Concen: 0.956 ug/l
 RT: 2.55 min Scan# 240
 Delta R.T. 0.00 min
 Lab File: VX019301.D
 Acq: 05 Nov 2020 10:15

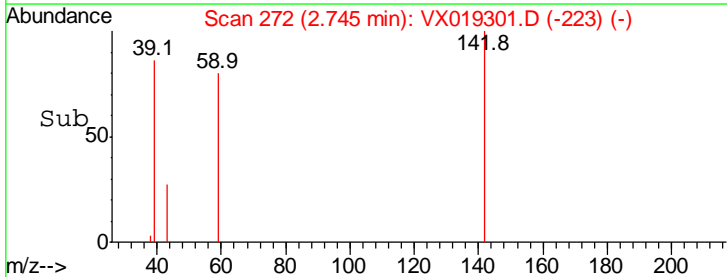
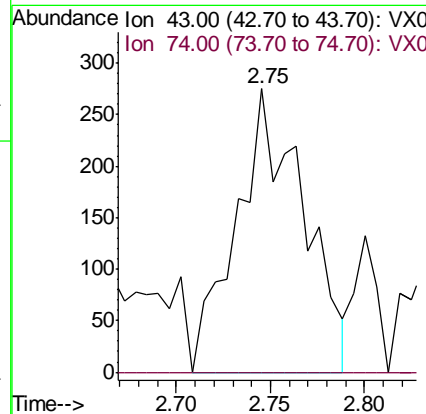
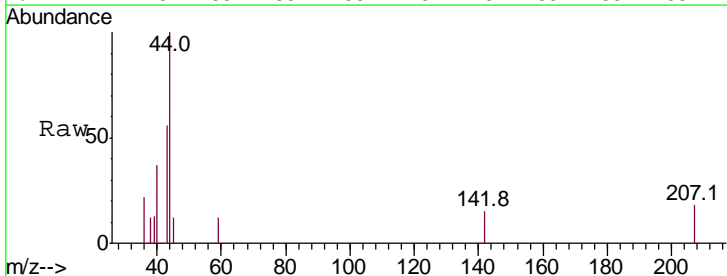
Instrument : MSVOA_X
 ClientSampled :

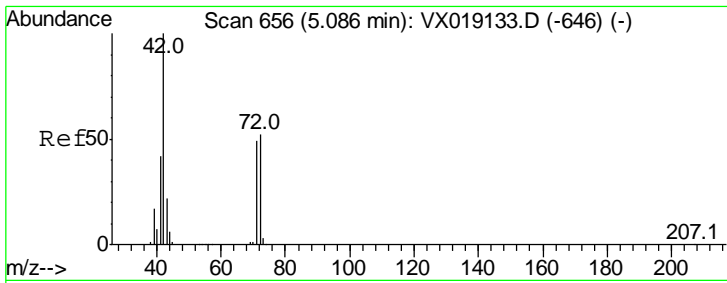
Tgt Ion	Resp	Lower	Upper
76	100		
78	15.0	7.3	10.9#



#18
 Methyl Acetate
 Concen: 0.202 ug/l
 RT: 2.75 min Scan# 272
 Delta R.T. -0.00 min
 Lab File: VX019301.D
 Acq: 05 Nov 2020 10:15

Tgt Ion	Resp	Lower	Upper
43	100		
74	0.0	22.6	33.8#

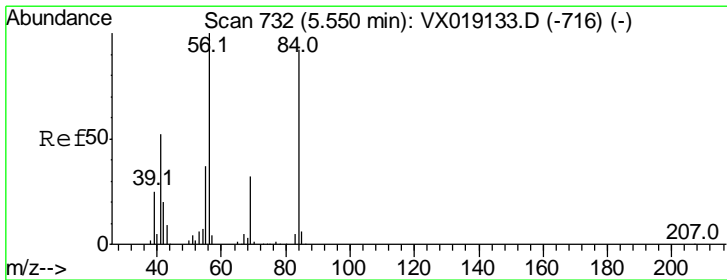
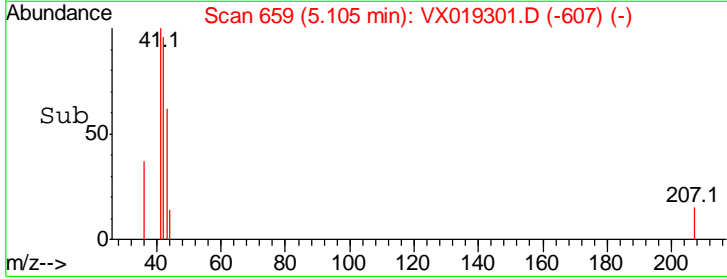
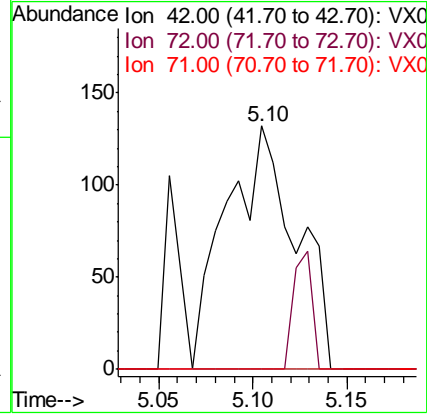
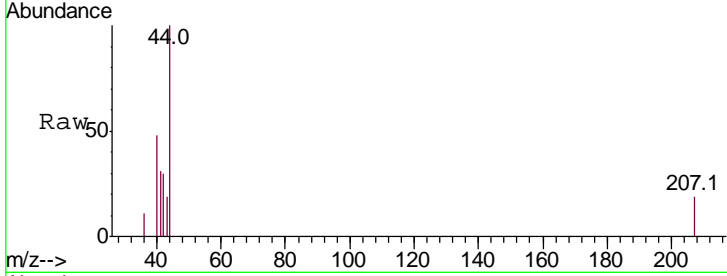




#29
 Tetrahydrofuran
 Concen: 0.248 ug/l
 RT: 5.10 min Scan# 659
 Delta R.T. 0.02 min
 Lab File: VX019301.D
 Acq: 05 Nov 2020 10:15

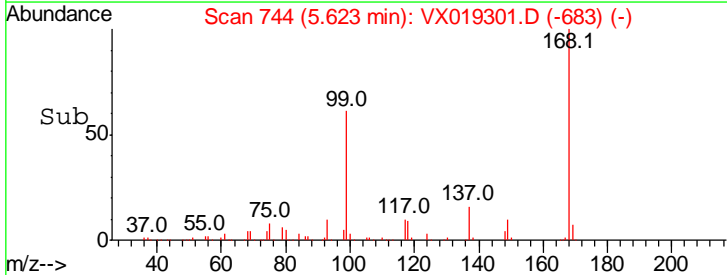
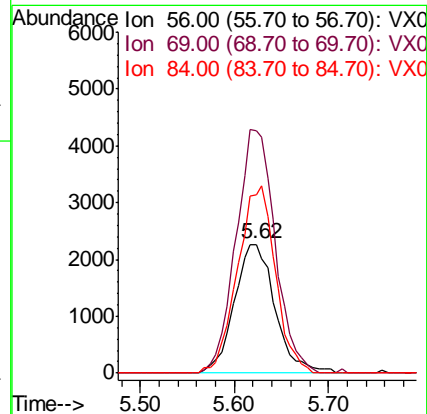
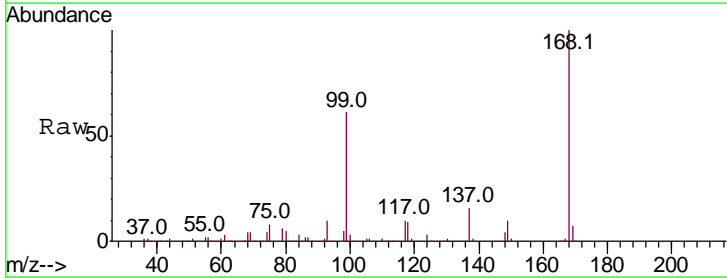
Instrument :
 MSVOA_X
 ClientSampled :

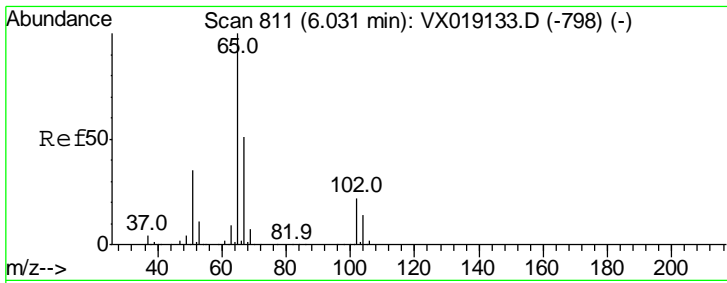
Tgt Ion	Ratio	Lower	Upper
42	100		
72	0.0	42.6	63.8#
71	0.0	39.7	59.5#



#31
 Cyclohexane
 Concen: 1.345 ug/l
 RT: 5.62 min Scan# 744
 Delta R.T. 0.07 min
 Lab File: VX019301.D
 Acq: 05 Nov 2020 10:15

Tgt Ion	Ratio	Lower	Upper
56	100		
69	187.9	25.9	38.9#
84	138.9	73.4	110.2#

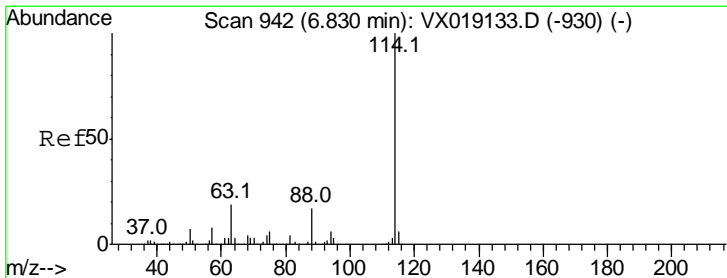
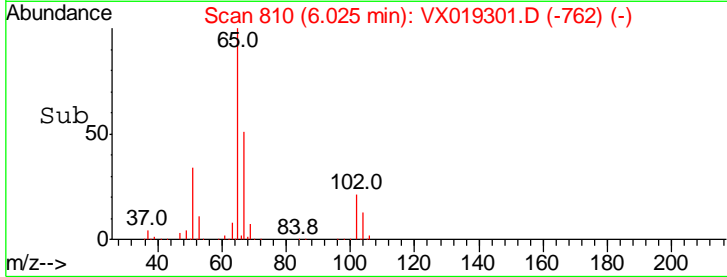
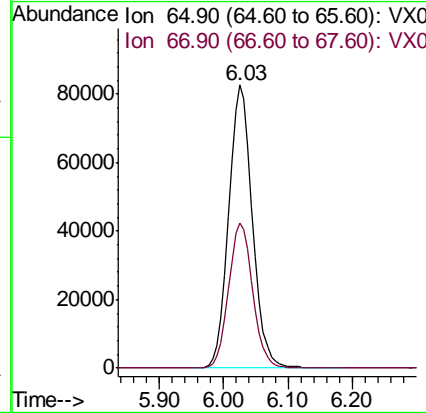
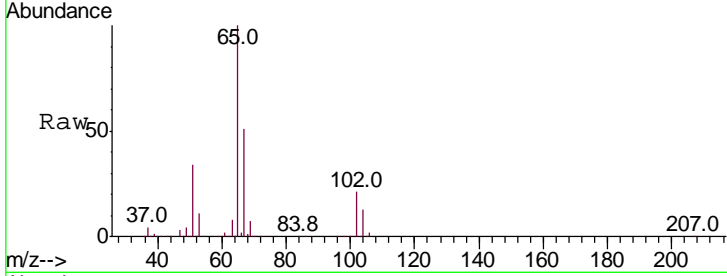




#33
 1,2-Dichloroethane-d4
 Concen: 53.626 ug/l
 RT: 6.03 min Scan# 810
 Delta R.T. -0.01 min
 Lab File: VX019301.D
 Acq: 05 Nov 2020 10:15

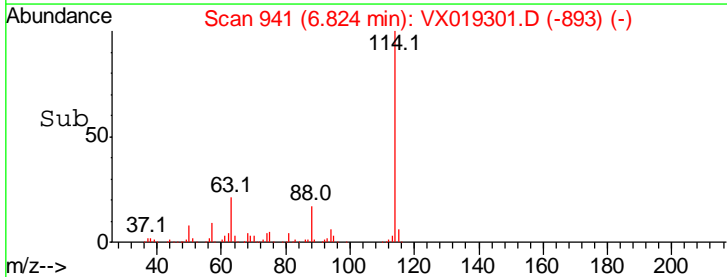
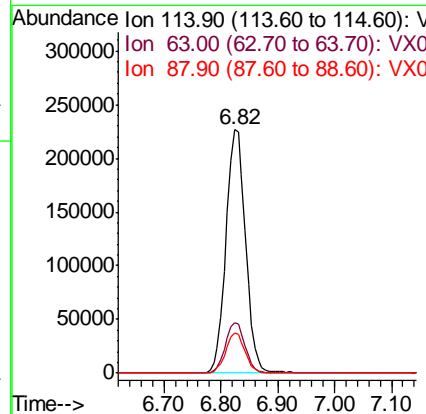
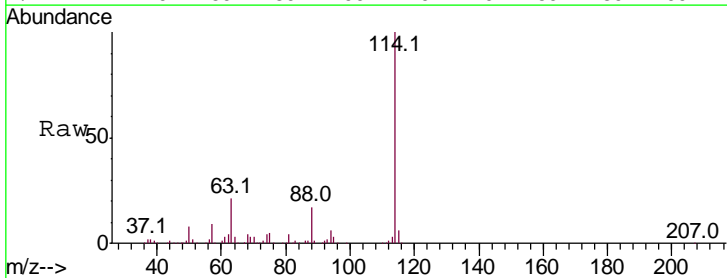
Instrument :
 MSVOA_X
 ClientSampled :

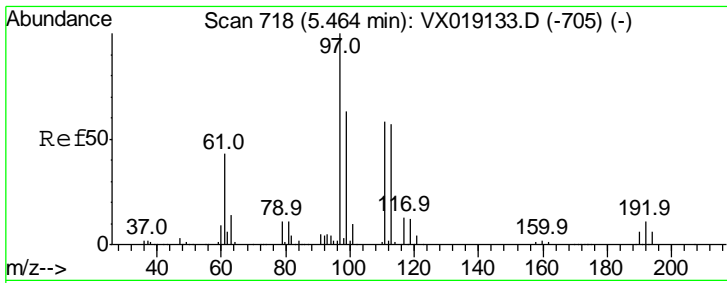
Tgt Ion	Resp	Lower	Upper
65	100		
67	52.0	0.0	103.0



#34
 1,4-Difluorobenzene
 Concen: 50.000 ug/l
 RT: 6.82 min Scan# 941
 Delta R.T. -0.01 min
 Lab File: VX019301.D
 Acq: 05 Nov 2020 10:15

Tgt Ion	Resp	Lower	Upper
114	100		
63	20.8	0.0	38.8
88	16.6	0.0	34.2

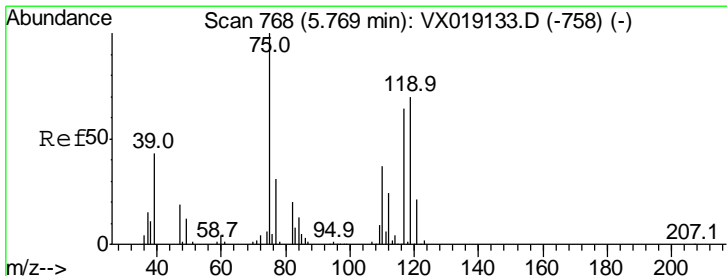
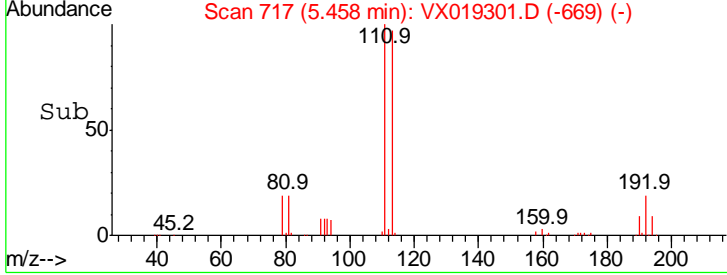
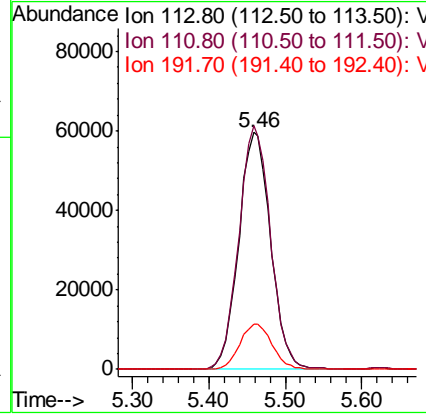
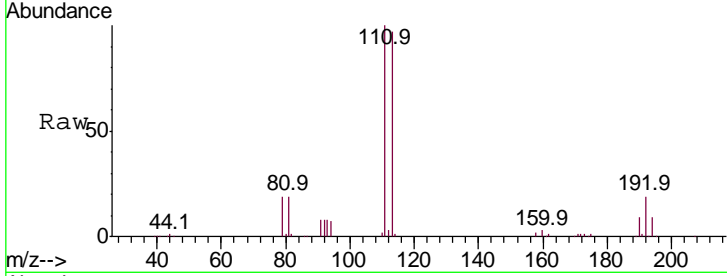




#35
 Dibromofluoromethane
 Concen: 50.523 ug/l
 RT: 5.46 min Scan# 717
 Delta R.T. -0.01 min
 Lab File: VX019301.D
 Acq: 05 Nov 2020 10:15

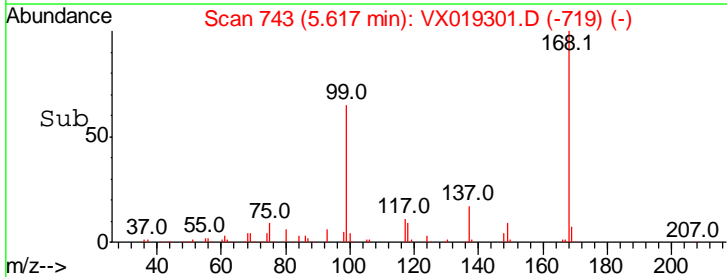
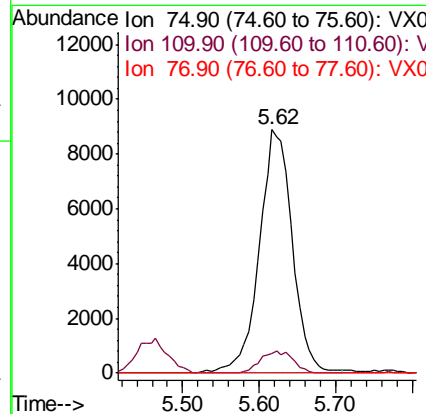
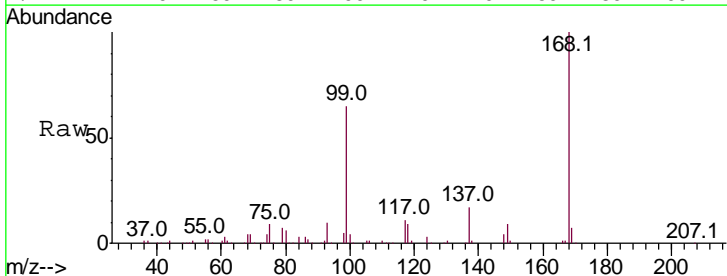
Instrument :
 MSVOA_X
 ClientSampled :

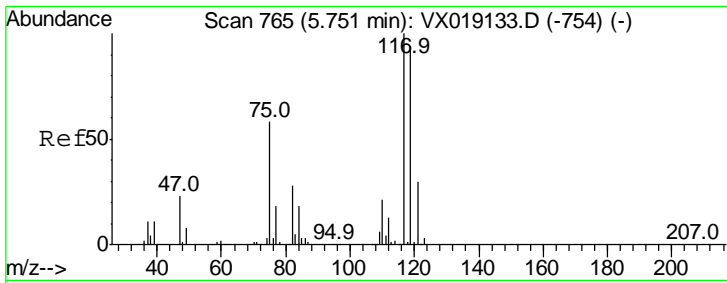
Tgt Ion	Resp	Lower	Upper
113	172414		
113	100		
111	102.4	82.3	123.5
192	19.2	16.2	24.2



#36
 1,1-Dichloropropene
 Concen: 5.328 ug/l
 RT: 5.62 min Scan# 743
 Delta R.T. -0.15 min
 Lab File: VX019301.D
 Acq: 05 Nov 2020 10:15

Tgt Ion	Resp	Lower	Upper
75	26729		
75	100		
110	8.8	18.3	54.9#
77	0.0	24.9	37.3#

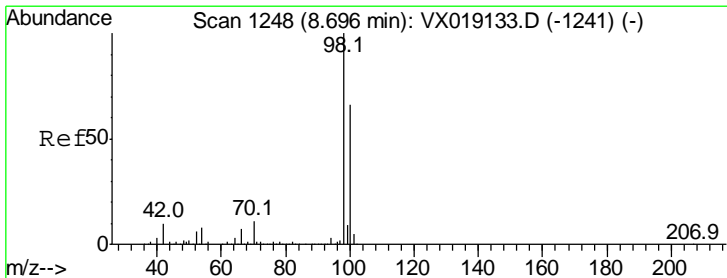
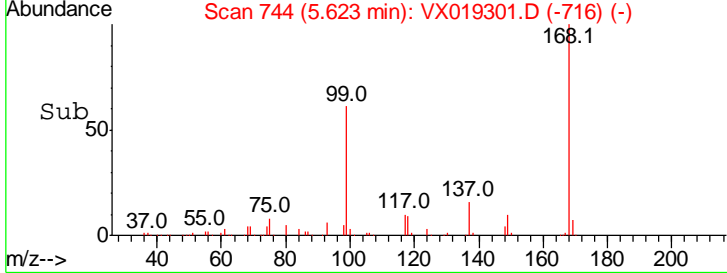
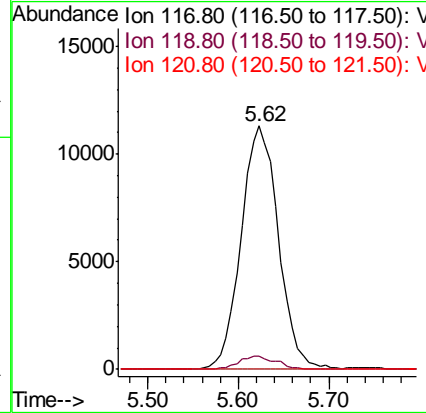
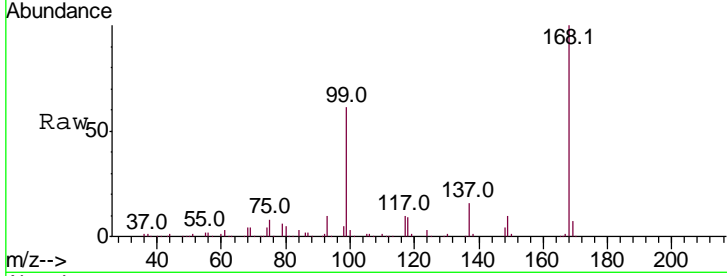




#38
 Carbon Tetrachloride
 Concen: 6.299 ug/l
 RT: 5.62 min Scan# 744
 Delta R.T. -0.13 min
 Lab File: VX019301.D
 Acq: 05 Nov 2020 10:15

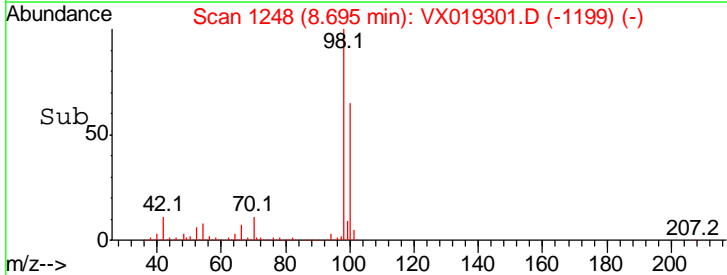
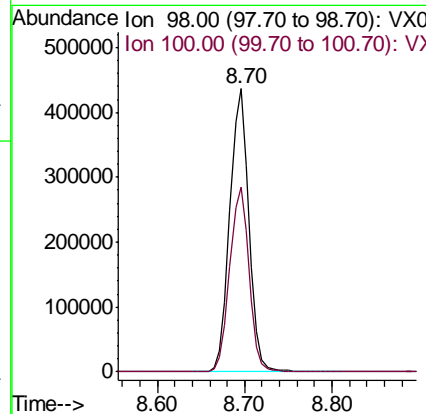
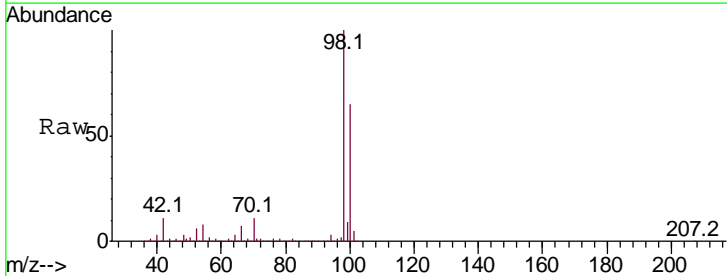
Instrument :
 MSVOA_X
 ClientSampled :

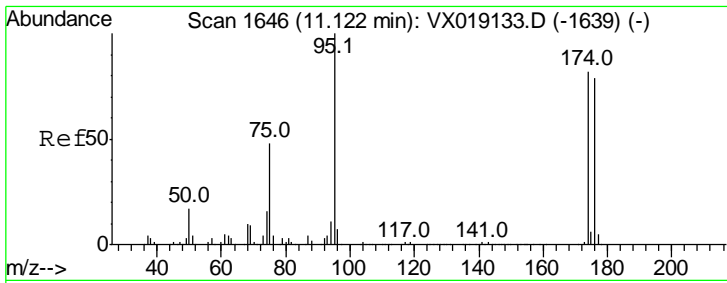
Tgt Ion	Resp	Lower	Upper
117	100		
119	5.6	75.0	112.6#
121	0.0	23.9	35.9#



#50
 Toluene-d8
 Concen: 51.449 ug/l
 RT: 8.70 min Scan# 1248
 Delta R.T. -0.00 min
 Lab File: VX019301.D
 Acq: 05 Nov 2020 10:15

Tgt Ion	Resp	Lower	Upper
98	100		
100	66.3	53.0	79.6

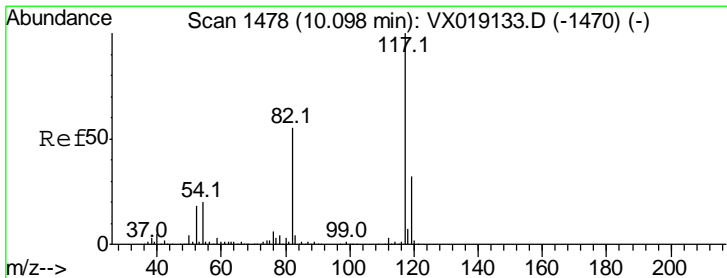
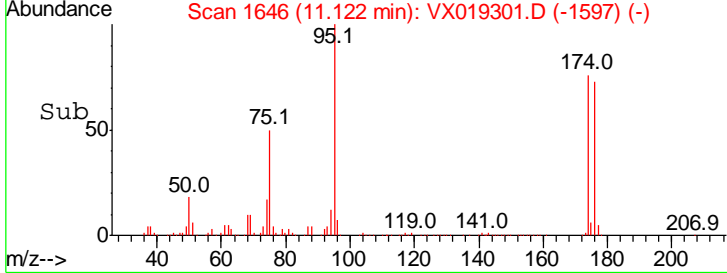
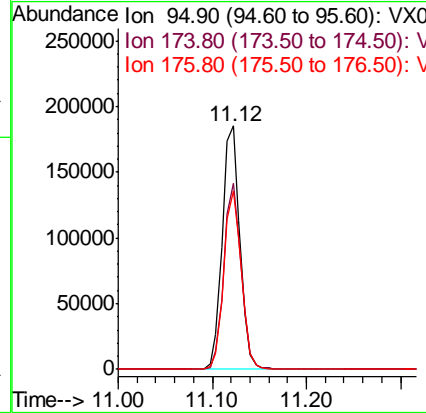
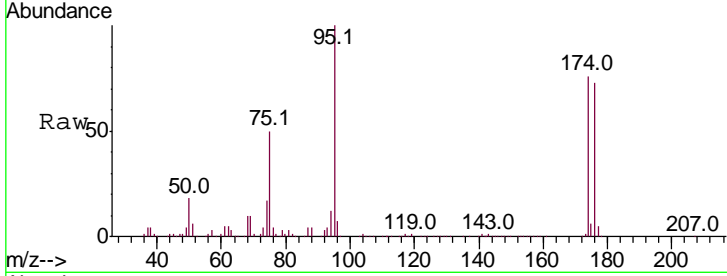




#62
 4-Bromofluorobenzene
 Concen: 49.466 ug/l
 RT: 11.12 min Scan# 1646
 Delta R.T. -0.00 min
 Lab File: VX019301.D
 Acq: 05 Nov 2020 10:15

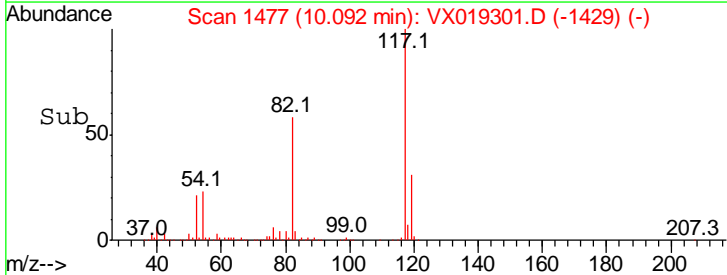
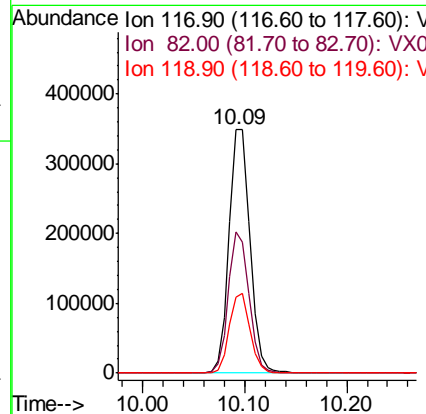
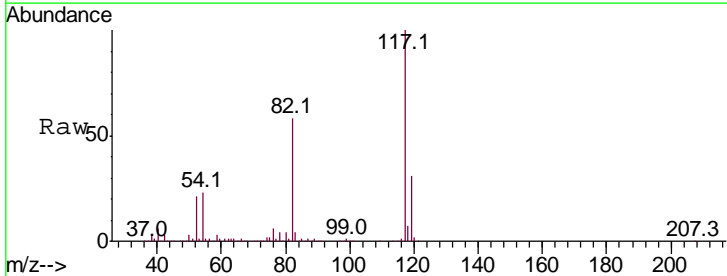
Instrument : MSVOA_X
 ClientSampled :

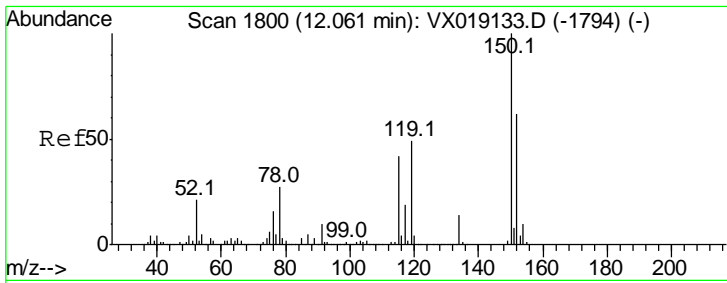
Tgt Ion	Resp	Lower	Upper
95	100		
174	74.6	0.0	156.0
176	72.7	0.0	149.8



#63
 Chlorobenzene-d5
 Concen: 50.000 ug/l
 RT: 10.09 min Scan# 1477
 Delta R.T. -0.01 min
 Lab File: VX019301.D
 Acq: 05 Nov 2020 10:15

Tgt Ion	Resp	Lower	Upper
117	100		
82	58.2	43.6	65.4
119	31.4	25.5	38.3

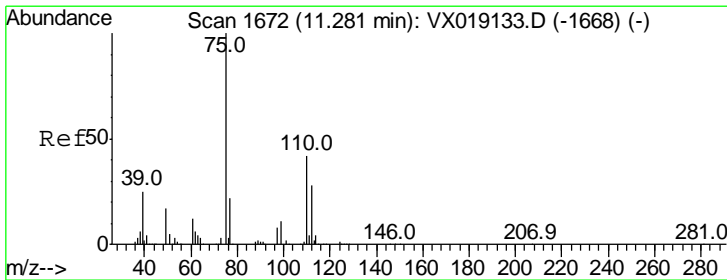
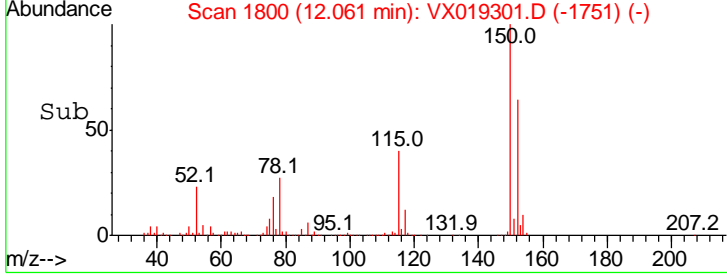
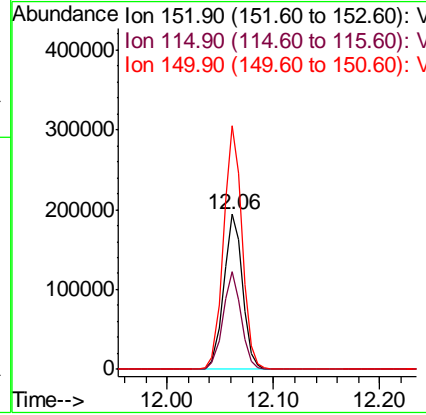
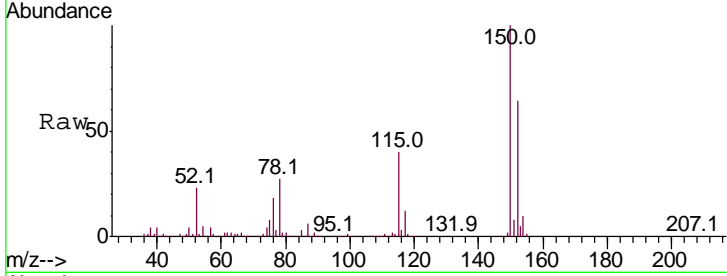




#72
 1,4-Dichlorobenzene-d4
 Concen: 50.000 ug/l
 RT: 12.06 min Scan# 1800
 Delta R.T. -0.00 min
 Lab File: VX019301.D
 Acq: 05 Nov 2020 10:15

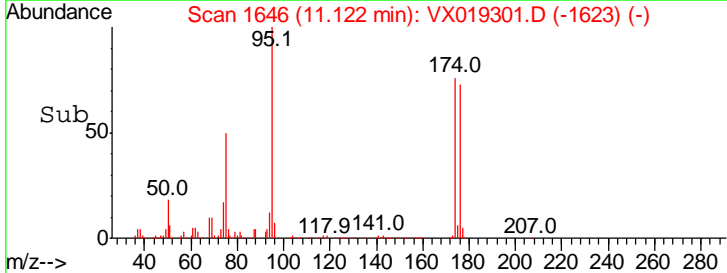
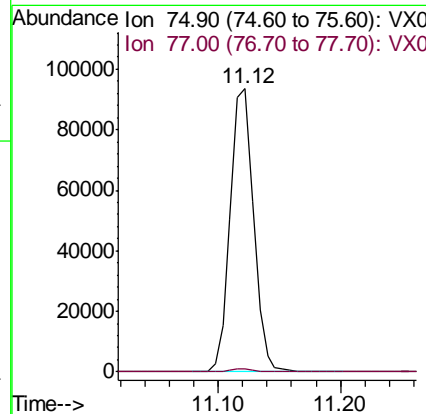
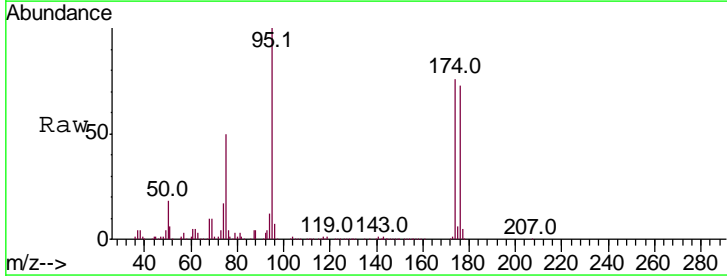
Instrument : MSVOA_X
 ClientSampled :

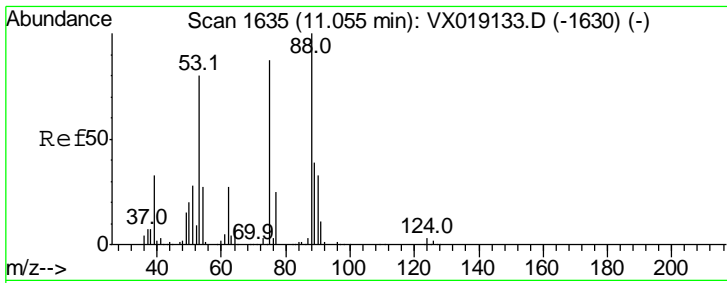
Tgt Ion	Resp	Lower	Upper
152	100		
115	60.5	41.9	125.7
150	155.2	0.0	347.8



#76
 1,2,3-Trichloropropane
 Concen: 25.201 ug/l
 RT: 11.12 min Scan# 1646
 Delta R.T. -0.16 min
 Lab File: VX019301.D
 Acq: 05 Nov 2020 10:15

Tgt Ion	Resp	Lower	Upper
75	100		
77	1.1	20.3	60.9#





#81
 trans-1,4-Dichloro-2-butene
 Concen: 66.355 ug/l
 RT: 11.12 min Scan# 1646
 Delta R.T. 0.07 min
 Lab File: VX019301.D
 Acq: 05 Nov 2020 10:15

Instrument :
 MSVOA_X
 ClientSampled :

Tot Ion	Resp	Lower	Upper
75	123892		
Ion Ratio			
75	100		
53	0.0	73.3	109.9#
89	0.0	38.2	57.2#

