

Data File : VX019293.D  
 Acq On : 05 Nov 2020 00:32  
 Operator : JC/MD  
 Sample : L4607-06  
 Misc : 5.0mL/MSVOA\_X/WATER  
 ALS Vial : 21 Sample Multiplier: 1

Instrument :  
 MSVOA\_X  
 ClientSampleId :  
 OW-04

Quant Time: Nov 05 03:28:51 2020  
 Quant Method : Z:\VOASRV\HPCHEM1\MSVOA\_X\METHOD\82X102720W.M  
 Quant Title : SW846 8260  
 QLast Update : Tue Oct 27 13:55:07 2020  
 Response via : Initial Calibration

Internal Standards	R.T.	QIon	Response	Conc	Units	Dev(Min)
1) Pentafluorobenzene	5.64	168	291166	50.00	ug/l	0.00
34) 1,4-Difluorobenzene	6.83	114	509144	50.00	ug/l	0.00
63) Chlorobenzene-d5	10.10	117	493112	50.00	ug/l	0.00
72) 1,4-Dichlorobenzene-d4	12.06	152	251308	50.00	ug/l	0.00

System Monitoring Compounds

33) 1,2-Dichloroethane-d4	6.03	65	207450	55.25	ug/l	0.00
Spiked Amount	50.000		Recovery	=	110.50%	
35) Dibromofluoromethane	5.46	113	163672	51.18	ug/l	0.00
Spiked Amount	50.000		Recovery	=	102.36%	
50) Toluene-d8	8.70	98	643393	53.37	ug/l	0.00
Spiked Amount	50.000		Recovery	=	106.74%	
62) 4-Bromofluorobenzene	11.12	95	244311	53.51	ug/l	0.00
Spiked Amount	50.000		Recovery	=	107.02%	

Target Compounds

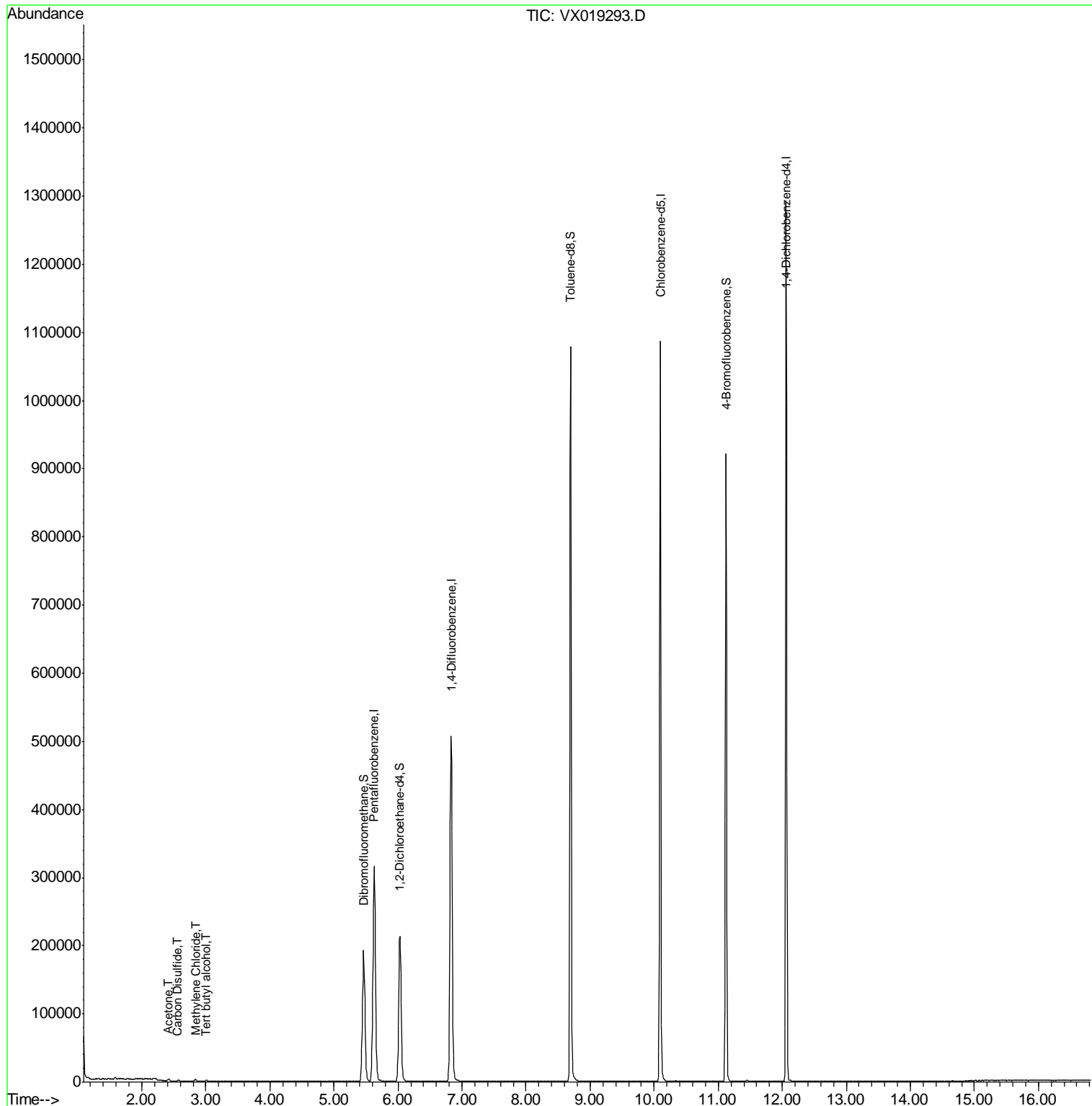
						Qvalue
11) Tert butyl alcohol	3.01	59	1750	2.360	ug/l	96
16) Acetone	2.42	43	3100	2.393	ug/l #	88
17) Carbon Disulfide	2.55	76	560	0.828	ug/l #	82
20) Methylene Chloride	2.83	84	1156	0.355	ug/l	90

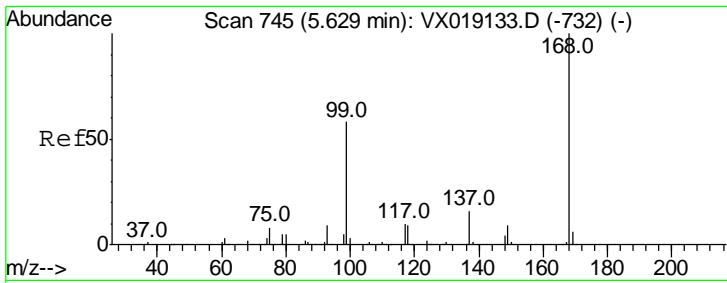
(#) = qualifier out of range (m) = manual integration (+) = signals summed

Data File : VX019293.D  
Acq On : 05 Nov 2020 00:32  
Operator : JC/MD  
Sample : L4607-06  
Misc : 5.0mL/MSVOA\_X/WATER  
ALS Vial : 21 Sample Multiplier: 1

Instrument :  
MSVOA\_X  
ClientSampleID :  
OW-04

Quant Time: Nov 05 03:28:51 2020  
Quant Method : Z:\VOASRV\HPCHEM1\MSVOA\_X\METHOD\82X102720W.M  
Quant Title : SW846 8260  
QLast Update : Tue Oct 27 13:55:07 2020  
Response via : Initial Calibration

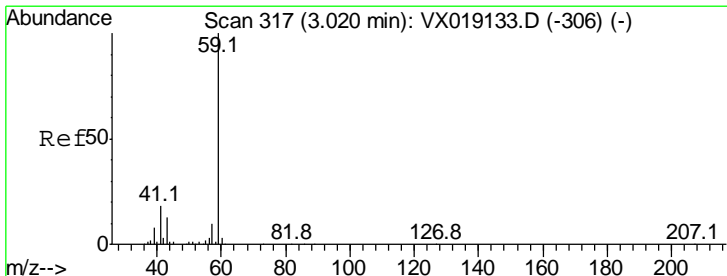
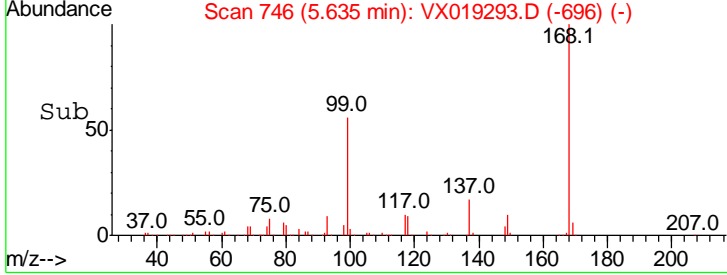
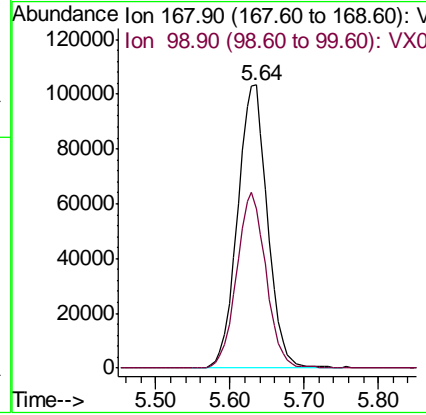
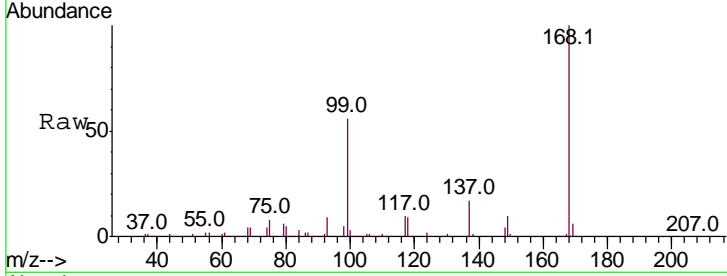




#1  
 Pentafluorobenzene  
 Concen: 50.000 ug/l  
 RT: 5.64 min Scan# 746  
 Delta R.T. 0.01 min  
 Lab File: VX019293.D  
 Acq: 05 Nov 2020 00:32

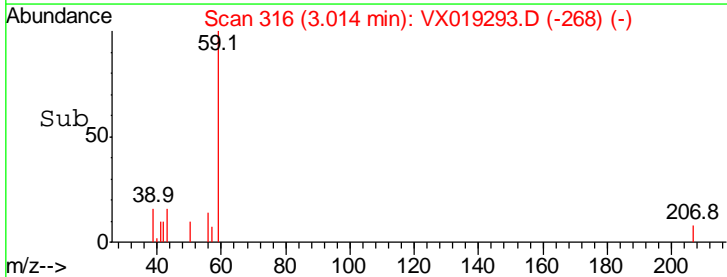
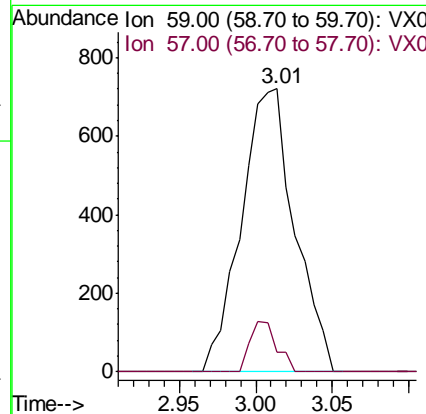
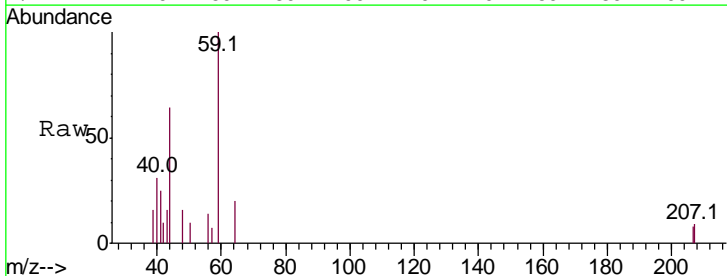
Instrument : MSVOA\_X  
 ClientSampled : OW-04

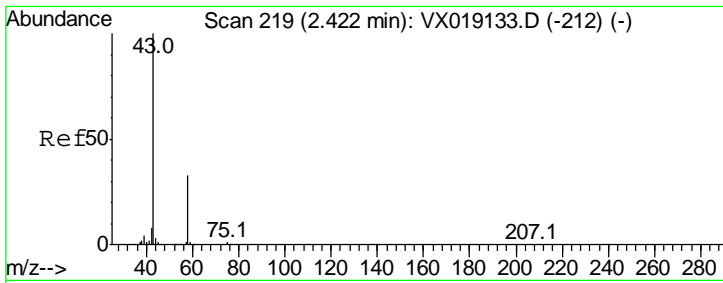
Tgt Ion	Resp	Lower	Upper
168	100		
99	56.5	46.6	69.8



#11  
 Tert butyl alcohol  
 Concen: 2.360 ug/l  
 RT: 3.01 min Scan# 316  
 Delta R.T. -0.01 min  
 Lab File: VX019293.D  
 Acq: 05 Nov 2020 00:32

Tgt Ion	Resp	Lower	Upper
59	100		
57	8.9	8.4	12.6

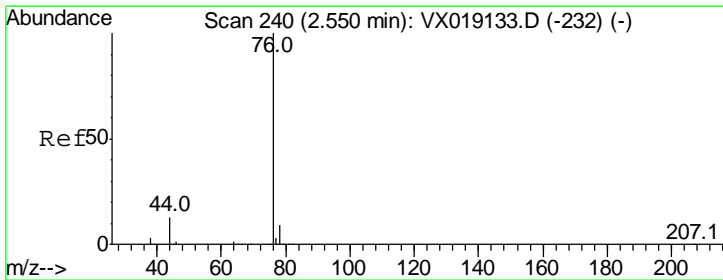
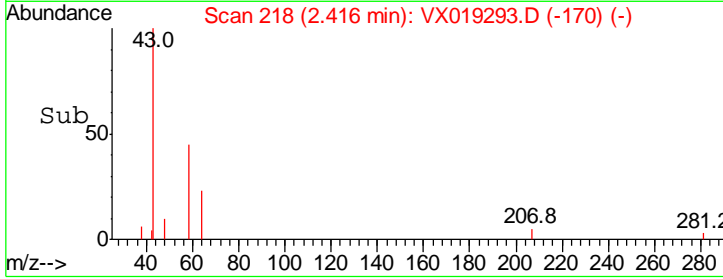
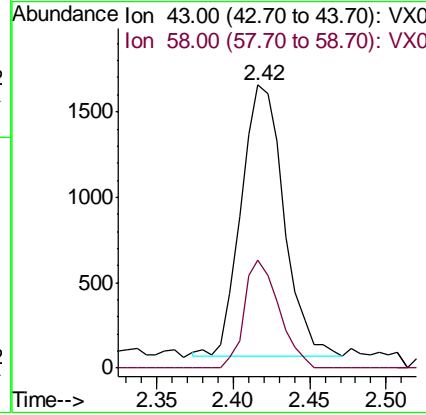
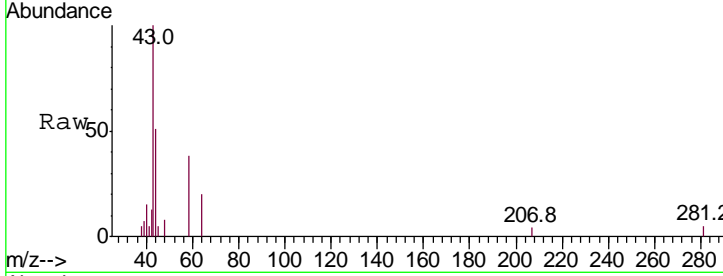




#16  
 Acetone  
 Concen: 2.393 ug/l  
 RT: 2.42 min Scan# 218  
 Delta R.T. -0.01 min  
 Lab File: VX019293.D  
 Acq: 05 Nov 2020 00:32

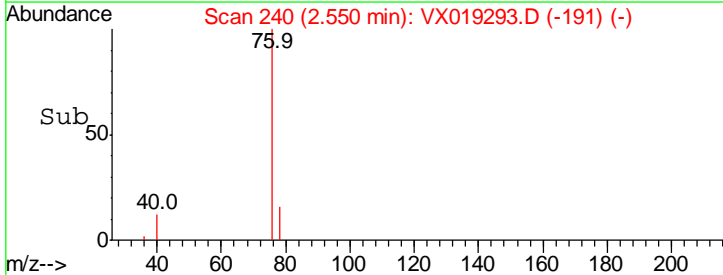
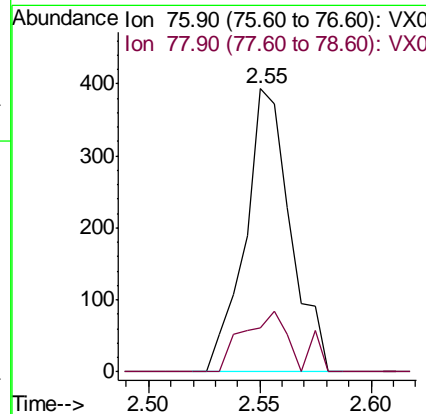
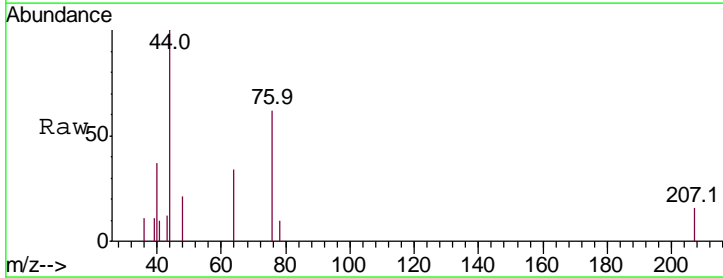
Instrument : MSVOA\_X  
 ClientSampled : OW-04

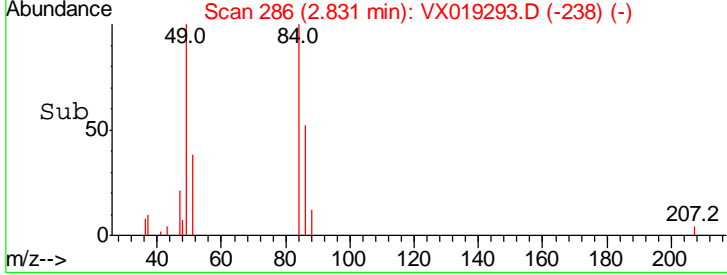
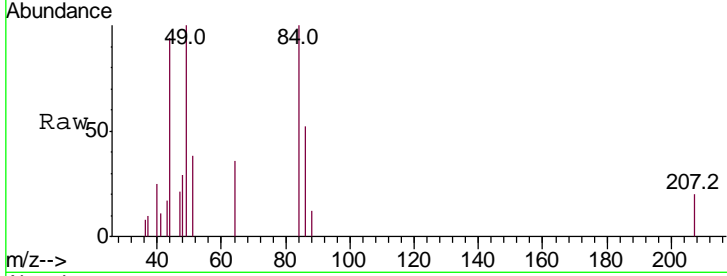
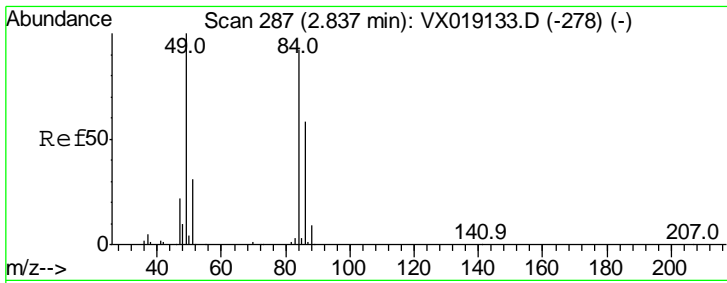
Tgt Ion	Resp	Lower	Upper
43	100		
58	39.9	26.3	39.5#



#17  
 Carbon Disulfide  
 Concen: 0.828 ug/l  
 RT: 2.55 min Scan# 240  
 Delta R.T. 0.00 min  
 Lab File: VX019293.D  
 Acq: 05 Nov 2020 00:32

Tgt Ion	Resp	Lower	Upper
76	100		
78	15.5	7.3	10.9#



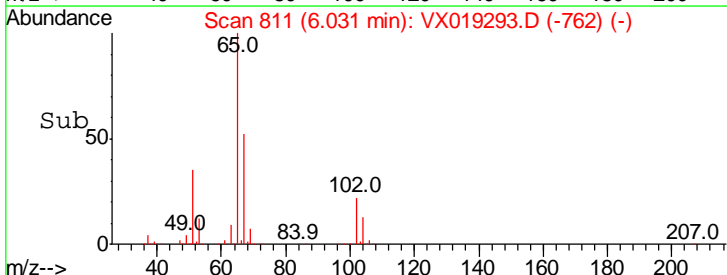
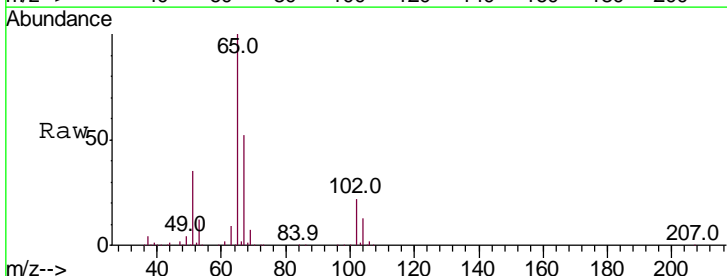
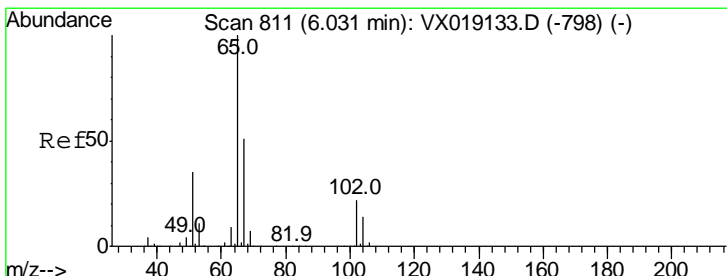
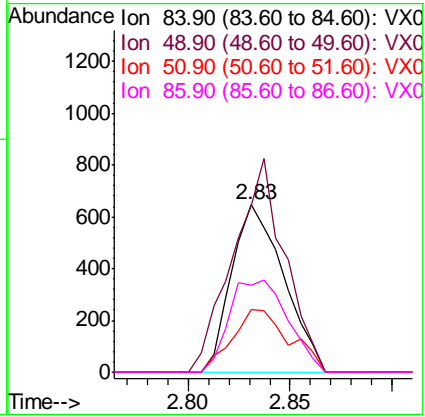


#20  
Methylene Chloride  
Concen: 0.355 ug/l  
RT: 2.83 min Scan# 286  
Delta R.T. -0.01 min  
Lab File: VX019293.D  
Acq: 05 Nov 2020 00:32

Instrument : MSVOA\_X  
ClientSampled : OW-04

Tgt Ion: 84 Resp: 1156

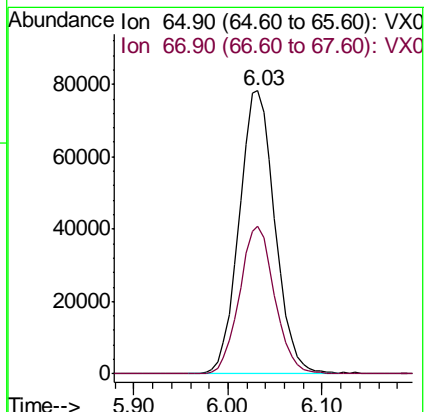
Ion	Ratio	Lower	Upper
84	100		
49	99.8	86.8	130.2
51	37.6	27.3	40.9
86	51.9	50.6	76.0

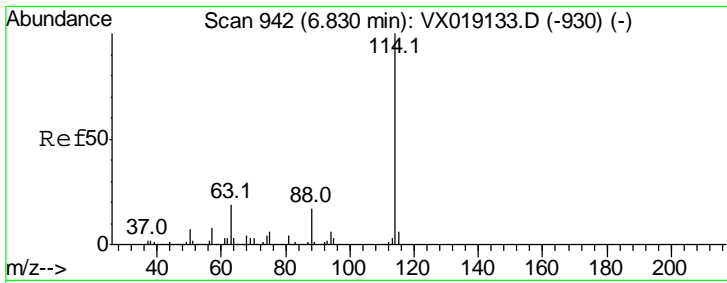


#33  
1,2-Dichloroethane-d4  
Concen: 55.247 ug/l  
RT: 6.03 min Scan# 811  
Delta R.T. -0.00 min  
Lab File: VX019293.D  
Acq: 05 Nov 2020 00:32

Tgt Ion: 65 Resp: 207450

Ion	Ratio	Lower	Upper
65	100		
67	51.5	0.0	103.0

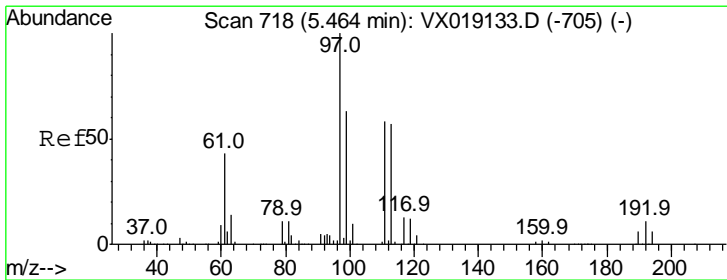
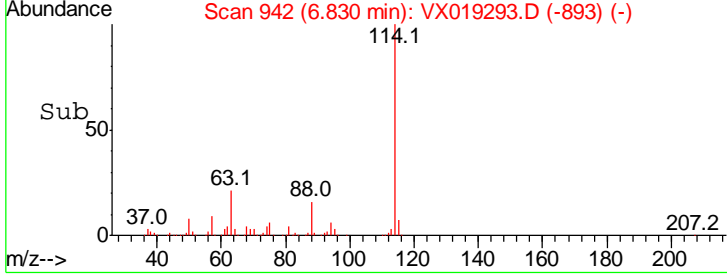
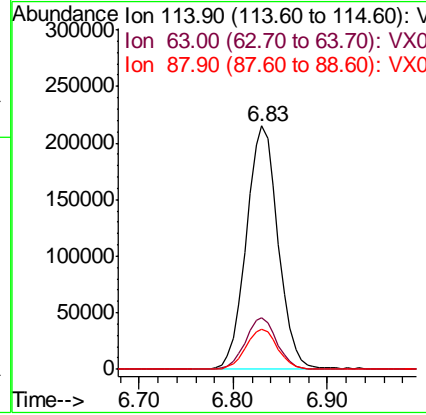
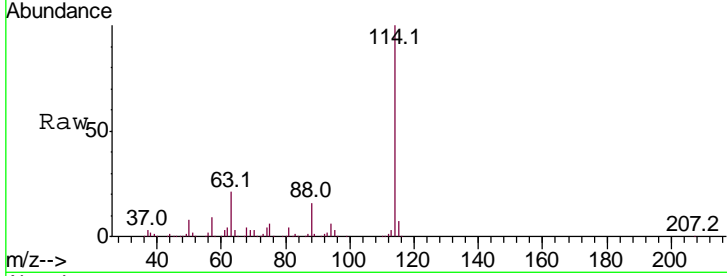




#34  
 1,4-Difluorobenzene  
 Concen: 50.000 ug/l  
 RT: 6.83 min Scan# 942  
 Delta R.T. -0.00 min  
 Lab File: VX019293.D  
 Acq: 05 Nov 2020 00:32

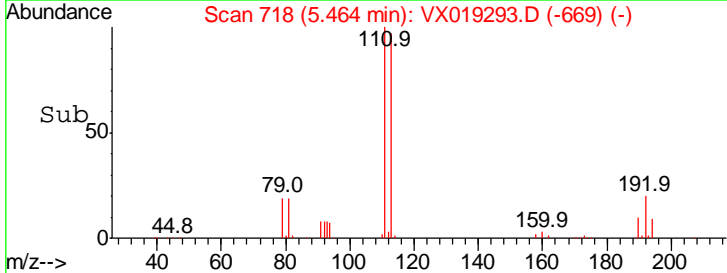
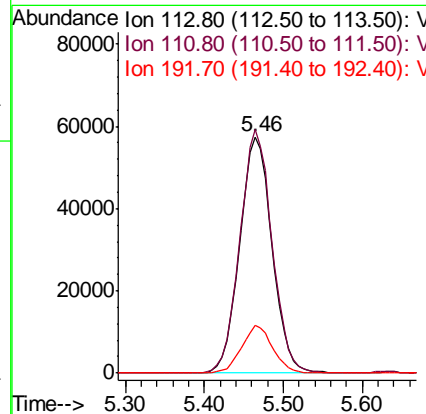
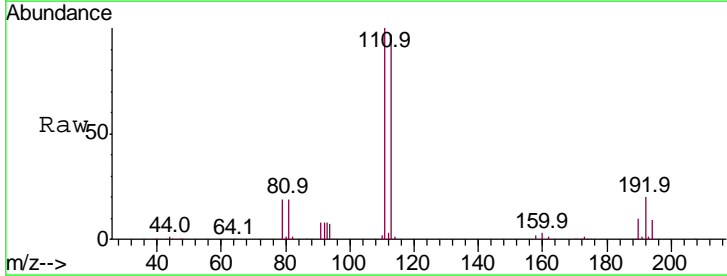
Instrument : MSVOA\_X  
 ClientSampled : OW-04

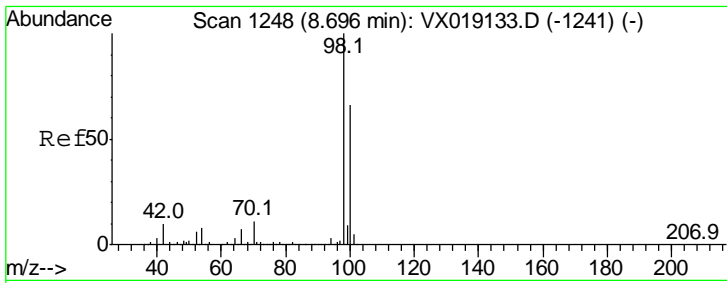
Tgt Ion	Resp	Lower	Upper
114	100		
63	21.2	0.0	38.8
88	16.3	0.0	34.2



#35  
 Dibromofluoromethane  
 Concen: 51.178 ug/l  
 RT: 5.46 min Scan# 718  
 Delta R.T. -0.00 min  
 Lab File: VX019293.D  
 Acq: 05 Nov 2020 00:32

Tgt Ion	Resp	Lower	Upper
113	100		
111	102.8	82.3	123.5
192	19.3	16.2	24.2

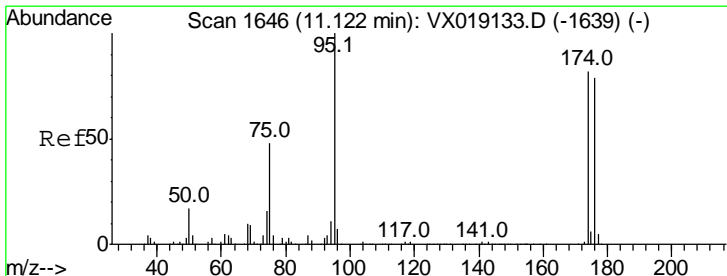
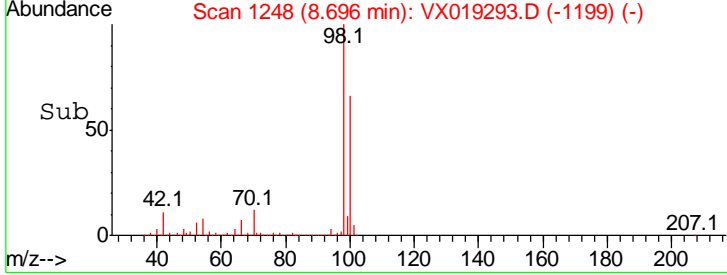
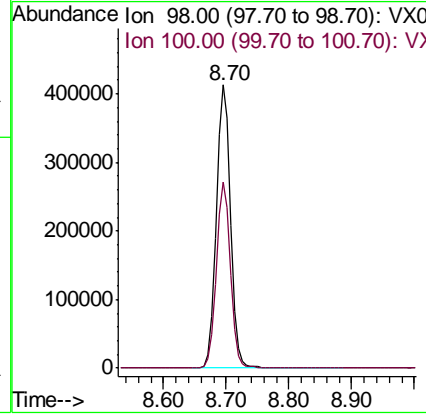
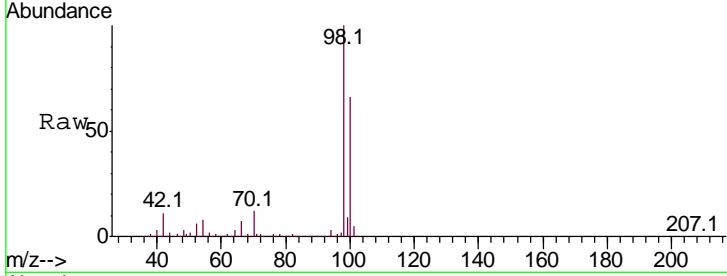




#50  
 Toluene-d8  
 Concen: 53.368 ug/l  
 RT: 8.70 min Scan# 1248  
 Delta R.T. -0.00 min  
 Lab File: VX019293.D  
 Acq: 05 Nov 2020 00:32

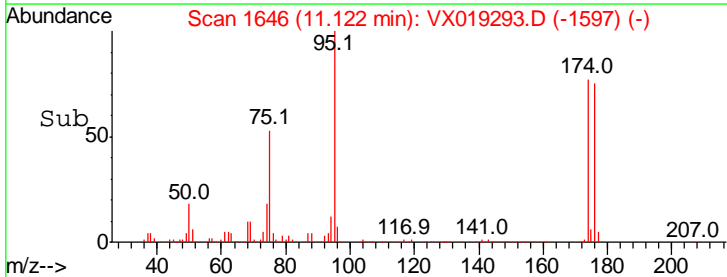
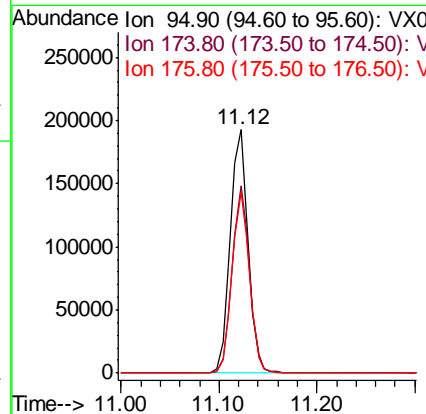
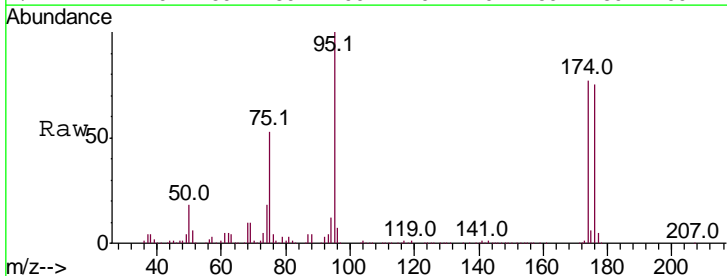
Instrument : MSVOA\_X  
 ClientSampled : OW-04

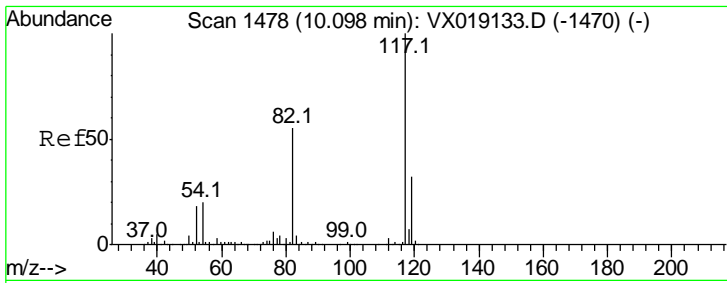
Tgt Ion	Resp	Lower	Upper
98	100		
100	65.3	53.0	79.6



#62  
 4-Bromofluorobenzene  
 Concen: 53.511 ug/l  
 RT: 11.12 min Scan# 1646  
 Delta R.T. -0.00 min  
 Lab File: VX019293.D  
 Acq: 05 Nov 2020 00:32

Tgt Ion	Resp	Lower	Upper
95	100		
174	74.8	0.0	156.0
176	73.1	0.0	149.8

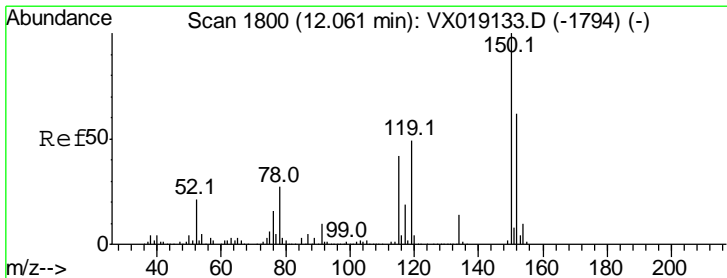
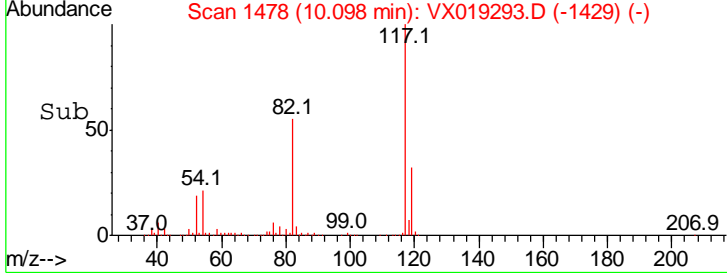
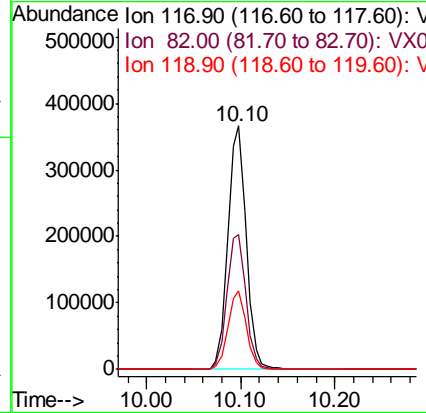
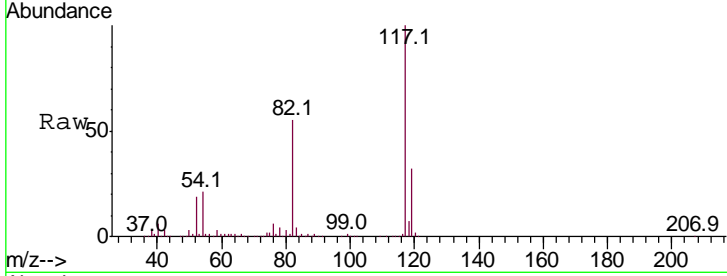




#63  
 Chlorobenzene-d5  
 Concen: 50.000 ug/l  
 RT: 10.10 min Scan# 1478  
 Delta R.T. -0.00 min  
 Lab File: VX019293.D  
 Acq: 05 Nov 2020 00:32

Instrument :  
 MSVOA\_X  
 ClientSampled :  
 OW-04

Tgt Ion	Resp	Lower	Upper
117	100		
82	55.4	43.6	65.4
119	32.3	25.5	38.3



#72  
 1,4-Dichlorobenzene-d4  
 Concen: 50.000 ug/l  
 RT: 12.06 min Scan# 1800  
 Delta R.T. -0.00 min  
 Lab File: VX019293.D  
 Acq: 05 Nov 2020 00:32

Tgt Ion	Resp	Lower	Upper
152	100		
115	61.0	41.9	125.7
150	155.3	0.0	347.8

