

Data Path : Z:\VOASRV\HPCHEM1\MSVOA X\DATA\VX110620\  
 Data File : VX019307.D  
 Acq On : 05 Nov 2020 12:41  
 Operator : JC/MD  
 Sample : L4634-02  
 Misc : 5.0mL/MSVOA X/WATER  
 ALS Vial : 35 Sample Multiplier: 1

Instrument :  
 MSVOA\_X  
 ClientSampleId :  
 MW-6

Quant Time: Nov 06 07:34:07 2020  
 Quant Method : Z:\VOASRV\HPCHEM1\MSVOA\_X\METHOD\82X102720W.M  
 Quant Title : SW846 8260  
 QLast Update : Tue Oct 27 13:55:07 2020  
 Response via : Initial Calibration

Internal Standards	R.T.	QIon	Response	Conc	Units	Dev(Min)
1) Pentafluorobenzene	5.63	168	282204	50.00	ug/l	0.00
34) 1,4-Difluorobenzene	6.83	114	499798	50.00	ug/l	0.00
63) Chlorobenzene-d5	10.10	117	466587	50.00	ug/l	0.00
72) 1,4-Dichlorobenzene-d4	12.06	152	238987	50.00	ug/l	0.00

## System Monitoring Compounds

33) 1,2-Dichloroethane-d4	6.03	65	201087	55.25	ug/l	0.00
Spiked Amount	50.000		Recovery	=	110.50%	
35) Dibromofluoromethane	5.46	113	157008	50.01	ug/l	0.00
Spiked Amount	50.000		Recovery	=	100.02%	
50) Toluene-d8	8.70	98	616169	52.07	ug/l	0.00
Spiked Amount	50.000		Recovery	=	104.14%	
62) 4-Bromofluorobenzene	11.12	95	235861	52.63	ug/l	0.00
Spiked Amount	50.000		Recovery	=	105.26%	

## Target Compounds

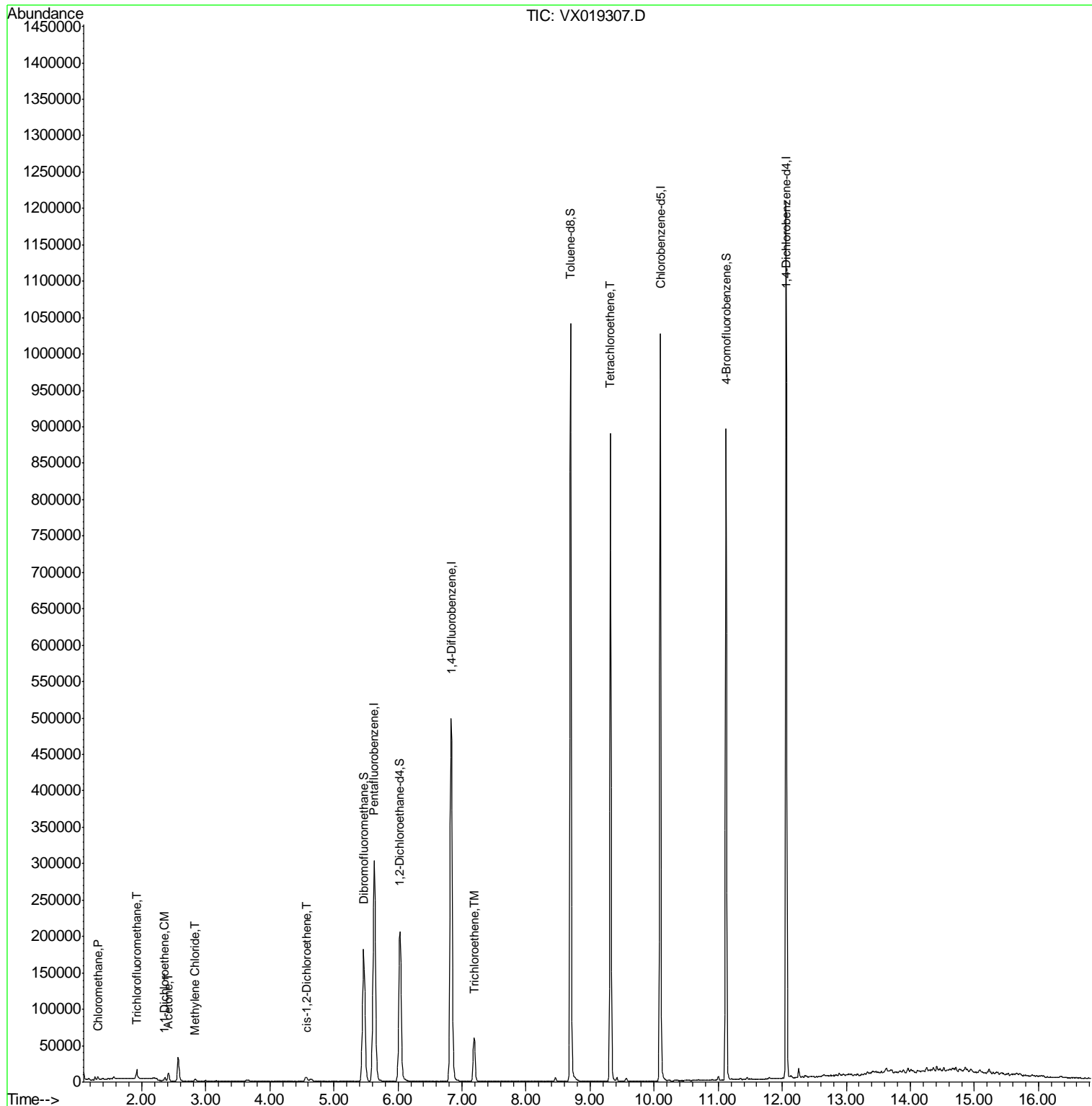
					Qvalue	
3) Chloromethane	1.31	50	2380	0.906	ug/l	96
7) Trichlorofluoromethane	1.92	101	7879	1.645	ug/l	94
12) 1,1-Dichloroethene	2.36	96	1516	0.554	ug/l #	83
16) Acetone	2.42	43	11249	8.960	ug/l	94
20) Methylene Chloride	2.83	84	1364	0.433	ug/l	90
27) cis-1,2-Dichloroethene	4.57	96	4277	1.216	ug/l	87
44) Trichloroethene	7.19	130	22906	6.112	ug/l	93
64) Tetrachloroethene	9.32	164	160829	45.242	ug/l	97

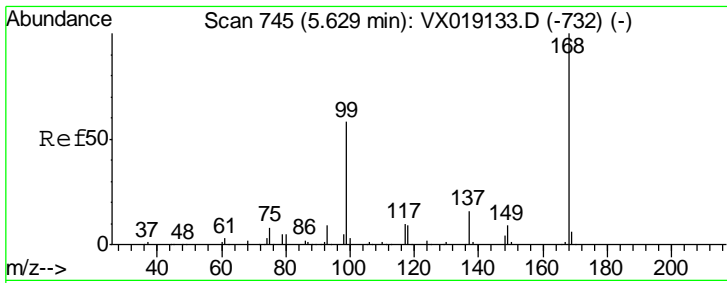
(#) = qualifier out of range (m) = manual integration (+) = signals summed

Data Path : Z:\VOASRV\HPCHEM1\MSVOA X\DATA\VX110620\  
 Data File : VX019307.D  
 Acq On : 05 Nov 2020 12:41  
 Operator : JC/MD  
 Sample : L4634-02  
 Misc : 5.0mL/MSVOA X/WATER  
 ALS Vial : 35 Sample Multiplier: 1

Instrument :  
 MSVOA\_X  
 Client Sampled :  
 MW-6

Quant Time: Nov 06 07:34:07 2020  
 Quant Method : Z:\VOASRV\HPCHEM1\MSVOA\_X\METHOD\82X102720W.M  
 Quant Title : SW846 8260  
 QLast Update : Tue Oct 27 13:55:07 2020  
 Response via : Initial Calibration

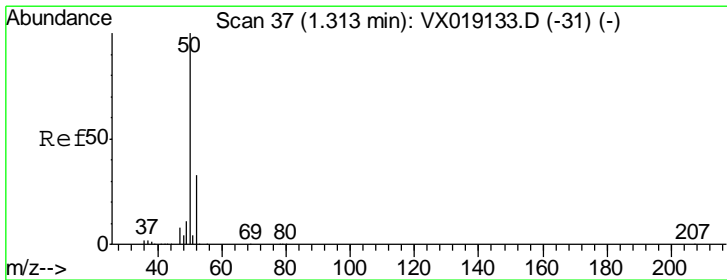
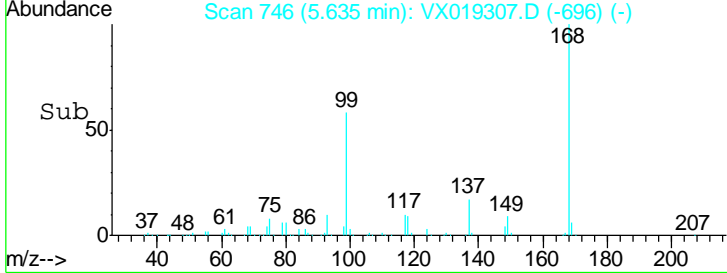
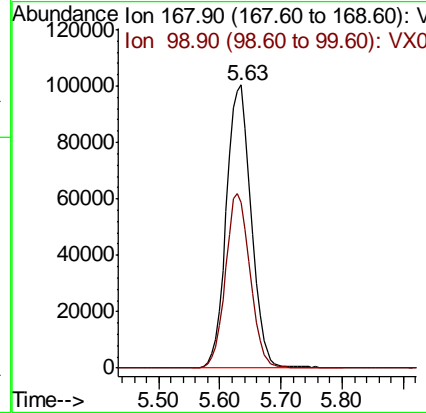
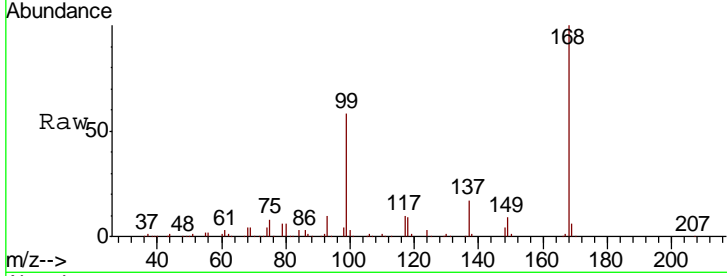




#1  
 Pentafluorobenzene  
 Concen: 50.000 ug/l  
 RT: 5.63 min Scan# 746  
 Delta R.T. 0.01 min  
 Lab File: VX019307.D  
 Acq: 05 Nov 2020 12:41

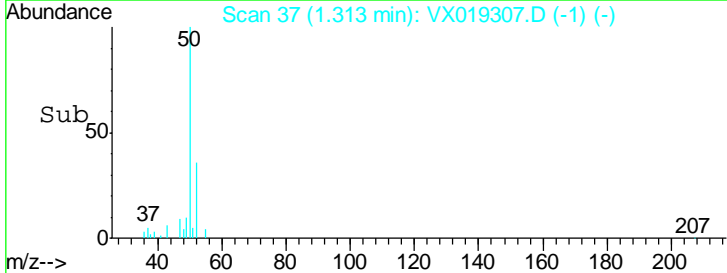
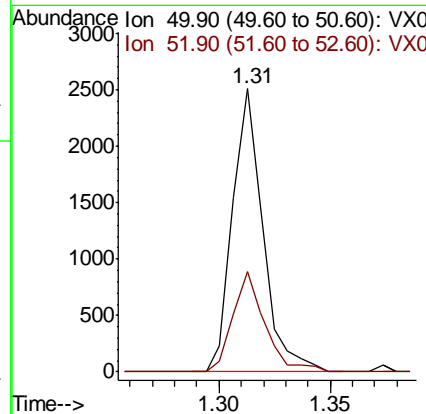
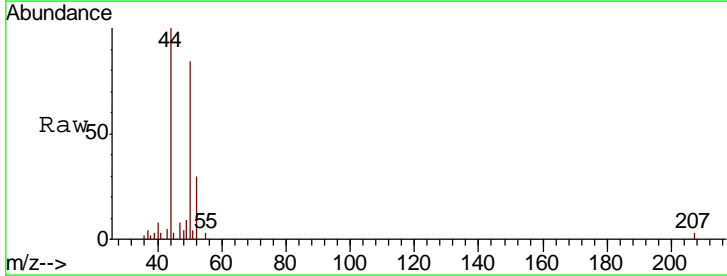
Instrument :  
 MSVOA\_X  
 ClientSampled :  
 MW-6

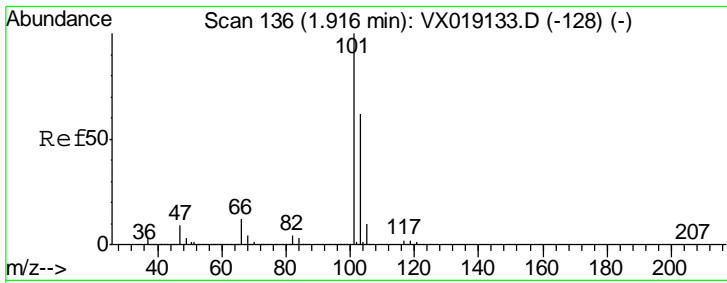
Tgt Ion	Resp	Lower	Upper
168	100		
99	58.4	46.6	69.8



#3  
 Chloromethane  
 Concen: 0.906 ug/l  
 RT: 1.31 min Scan# 37  
 Delta R.T. -0.00 min  
 Lab File: VX019307.D  
 Acq: 05 Nov 2020 12:41

Tgt Ion	Resp	Lower	Upper
50	100		
52	35.7	26.8	40.2

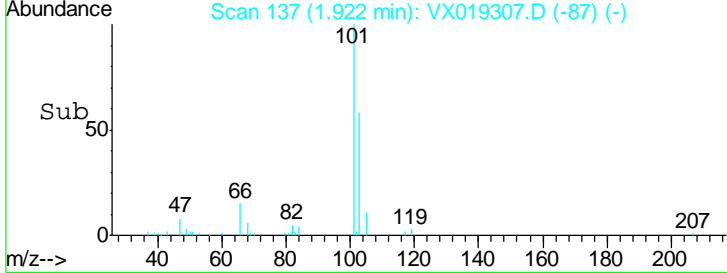
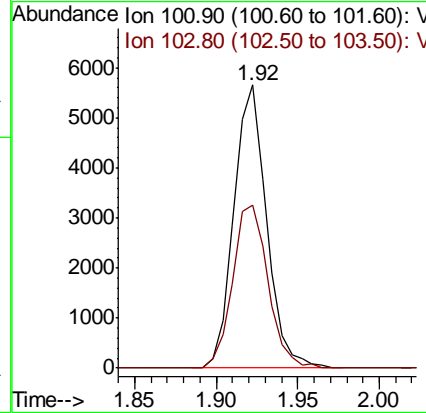
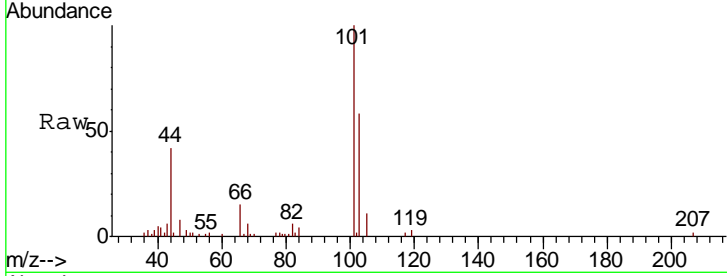




#7  
 Trichlorofluoromethane  
 Concen: 1.645 ug/l  
 RT: 1.92 min Scan# 137  
 Delta R.T. 0.01 min  
 Lab File: VX019307.D  
 Acq: 05 Nov 2020 12:41

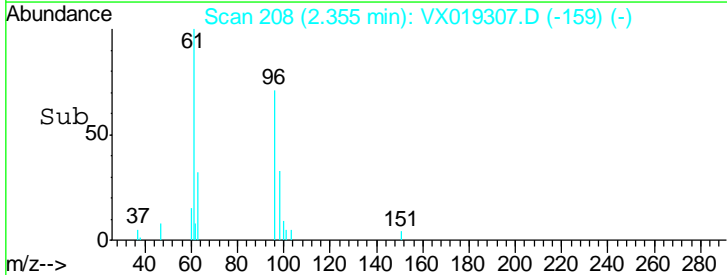
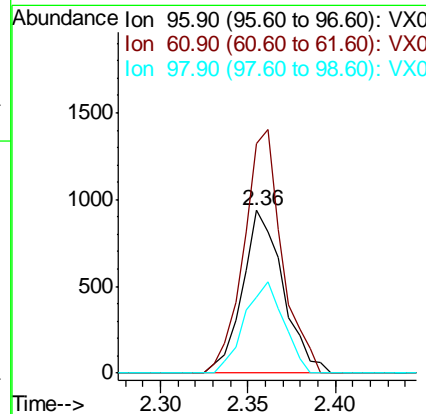
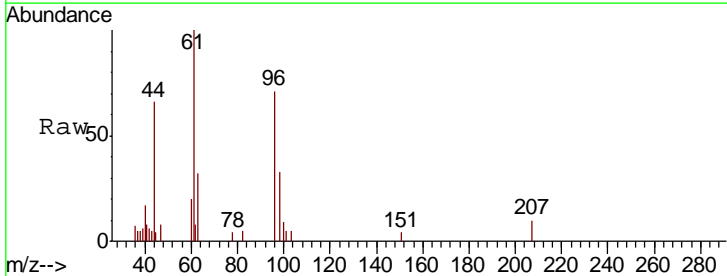
Instrument :  
 MSVOA\_X  
 ClientSampled :  
 MW-6

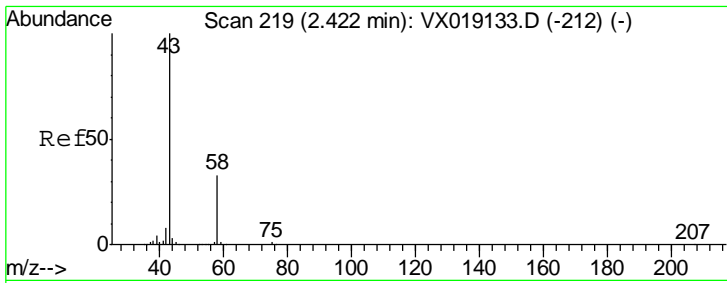
Tgt Ion	Resp	Lower	Upper
101	7879		
103	57.6	50.0	75.0



#12  
 1,1-Dichloroethene  
 Concen: 0.554 ug/l  
 RT: 2.36 min Scan# 208  
 Delta R.T. -0.00 min  
 Lab File: VX019307.D  
 Acq: 05 Nov 2020 12:41

Tgt Ion	Resp	Lower	Upper
96	1516		
61	140.6	127.7	191.5
98	46.9	52.1	78.1#

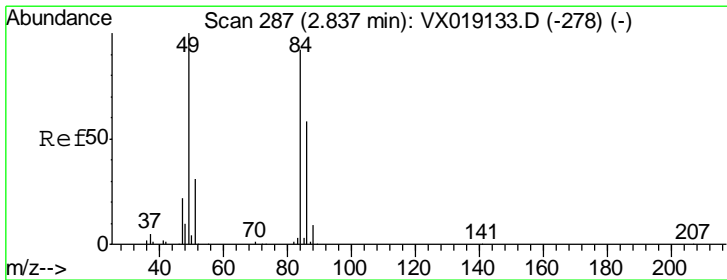
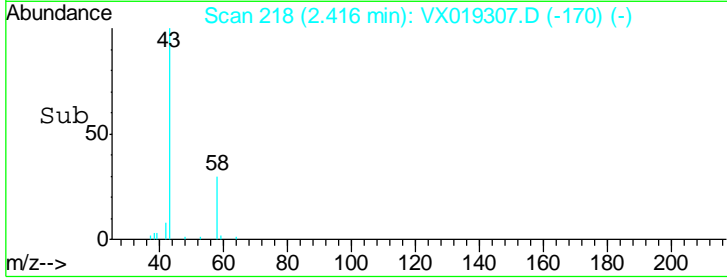
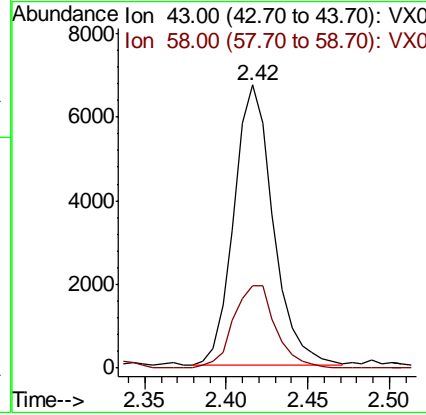
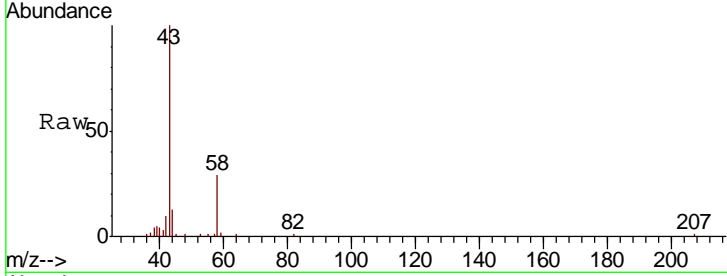




#16  
 Acetone  
 Concen: 8.960 ug/l  
 RT: 2.42 min Scan# 218  
 Delta R.T. -0.01 min  
 Lab File: VX019307.D  
 Acq: 05 Nov 2020 12:41

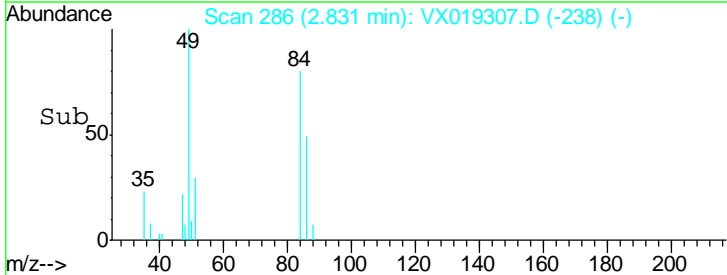
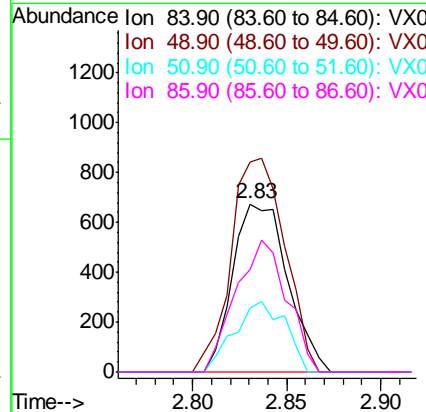
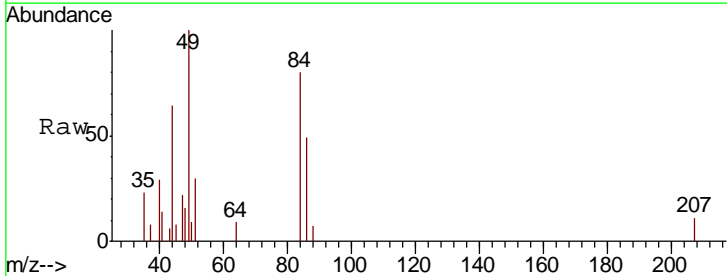
Instrument :  
 MSVOA\_X  
 ClientSampled :  
 MW-6

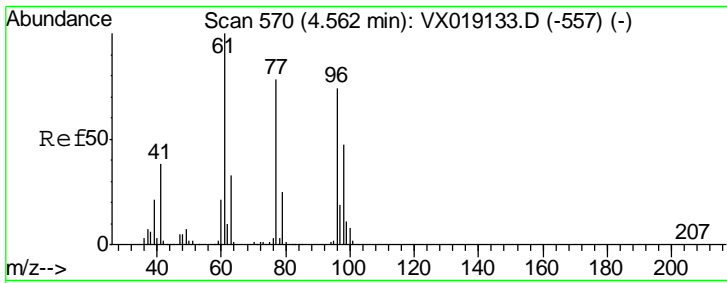
Tgt Ion	Resp	Lower	Upper
43	11249		
58	29.3	26.3	39.5



#20  
 Methylene Chloride  
 Concen: 0.433 ug/l  
 RT: 2.83 min Scan# 286  
 Delta R.T. -0.01 min  
 Lab File: VX019307.D  
 Acq: 05 Nov 2020 12:41

Tgt Ion	Resp	Lower	Upper
84	1364		
49	125.0	86.8	130.2
51	37.8	27.3	40.9
86	60.9	50.6	76.0

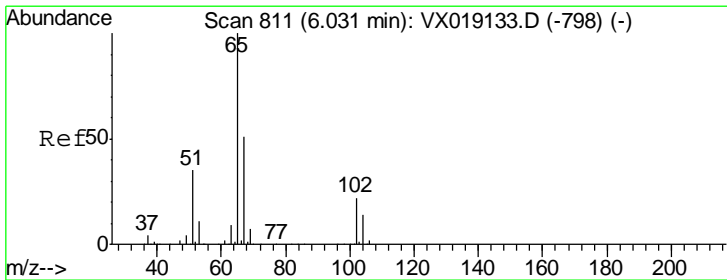
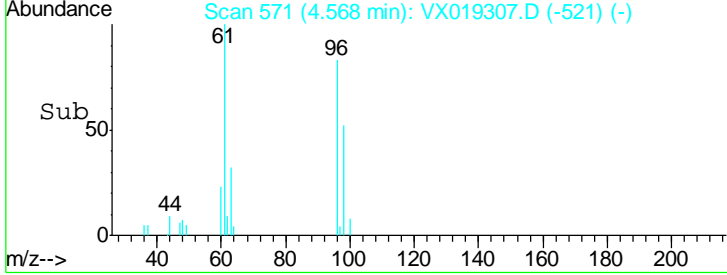
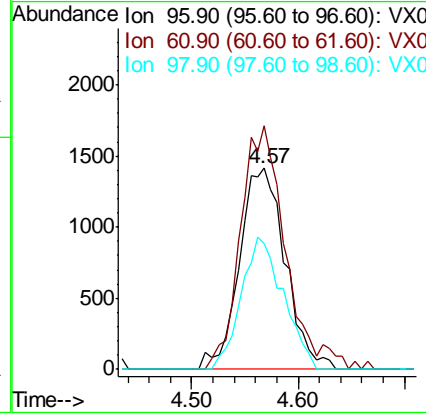
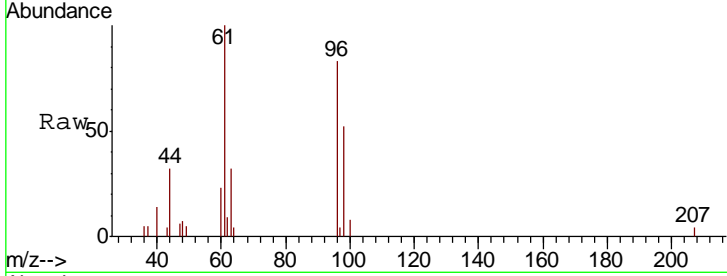




#27  
 cis-1,2-Dichloroethene  
 Concen: 1.216 ug/l  
 RT: 4.57 min Scan# 571  
 Delta R.T. 0.01 min  
 Lab File: VX019307.D  
 Acq: 05 Nov 2020 12:41

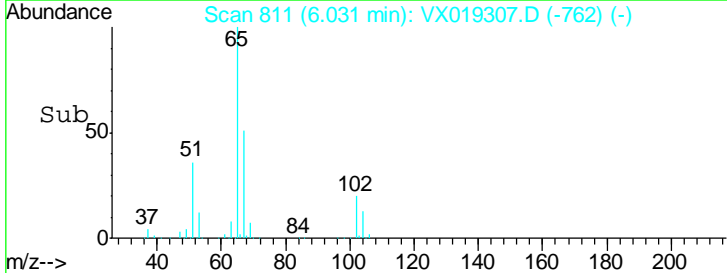
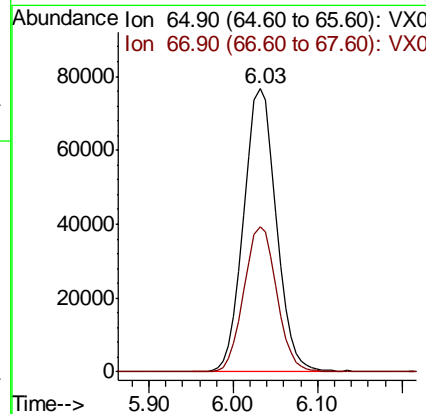
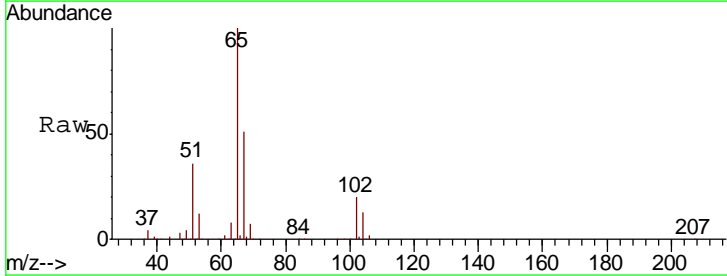
**Instrument :**  
 MSVOA\_X  
**ClientSampled :**  
 MW-6

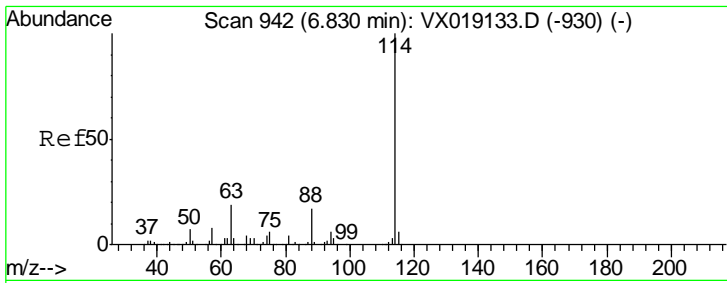
Tgt Ion	Resp	Lower	Upper
96	4277		
61	118.9	0.0	278.8
98	60.2	0.0	130.2



#33  
 1,2-Dichloroethane-d4  
 Concen: 55.253 ug/l  
 RT: 6.03 min Scan# 811  
 Delta R.T. -0.00 min  
 Lab File: VX019307.D  
 Acq: 05 Nov 2020 12:41

Tgt Ion	Resp	Lower	Upper
65	201087		
67	51.7	0.0	103.0

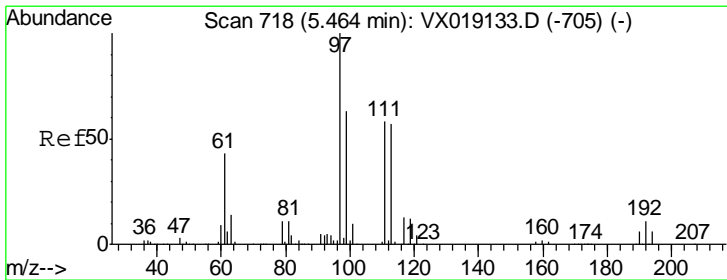
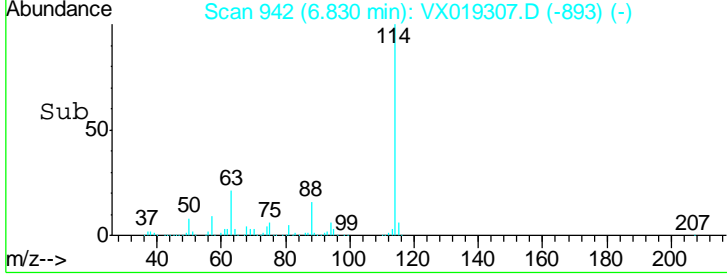
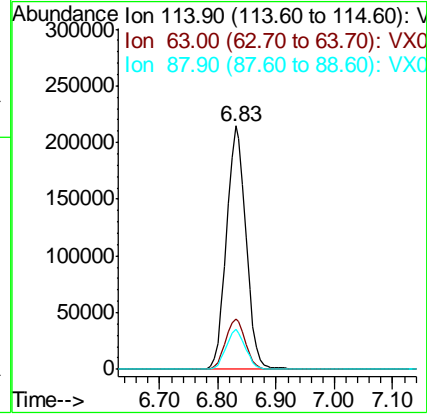
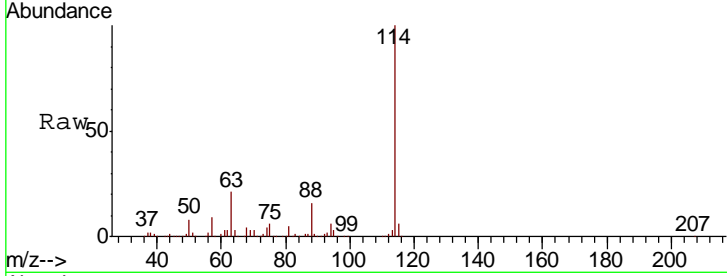




#34  
 1,4-Difluorobenzene  
 Concen: 50.000 ug/l  
 RT: 6.83 min Scan# 942  
 Delta R.T. -0.00 min  
 Lab File: VX019307.D  
 Acq: 05 Nov 2020 12:41

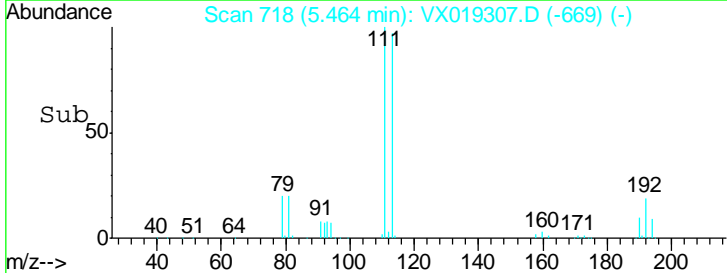
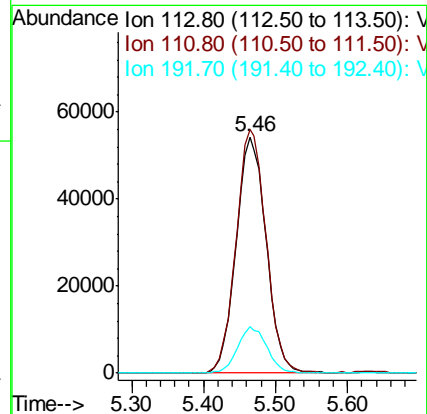
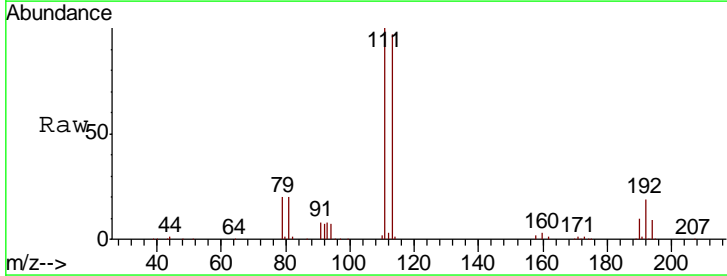
Instrument :  
 MSVOA\_X  
 ClientSampled :  
 MW-6

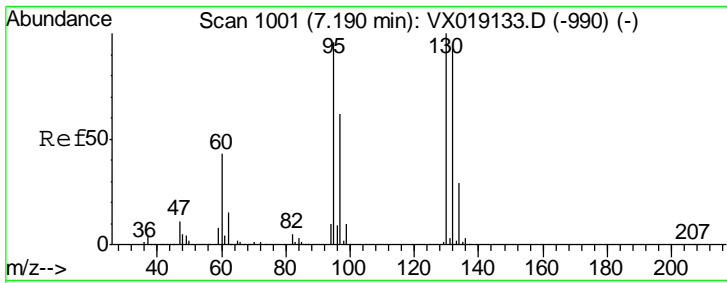
Tgt Ion	Resp	Lower	Upper
114	499798		
63	20.7	0.0	38.8
88	16.4	0.0	34.2



#35  
 Dibromofluoromethane  
 Concen: 50.012 ug/l  
 RT: 5.46 min Scan# 718  
 Delta R.T. -0.00 min  
 Lab File: VX019307.D  
 Acq: 05 Nov 2020 12:41

Tgt Ion	Resp	Lower	Upper
113	157008		
111	102.9	82.3	123.5
192	19.1	16.2	24.2

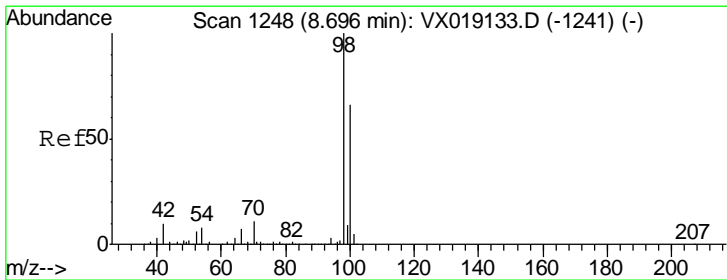
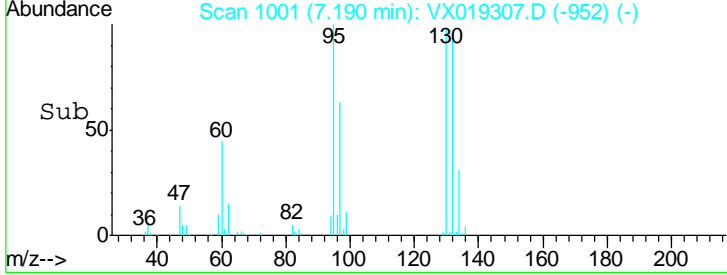
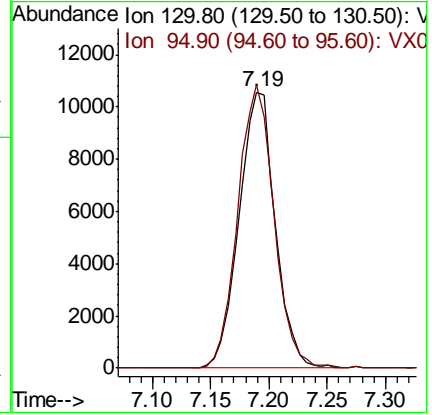
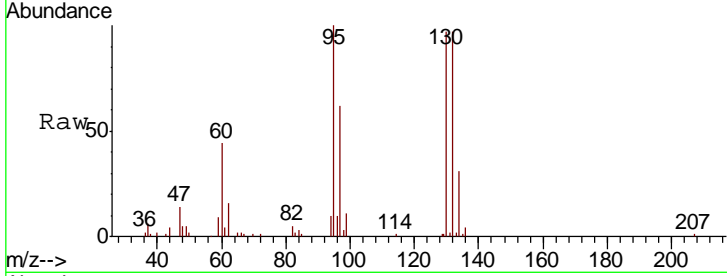




#44  
 Trichloroethene  
 Concen: 6.112 ug/l  
 RT: 7.19 min Scan# 1001  
 Delta R.T. -0.00 min  
 Lab File: VX019307.D  
 Acq: 05 Nov 2020 12:41

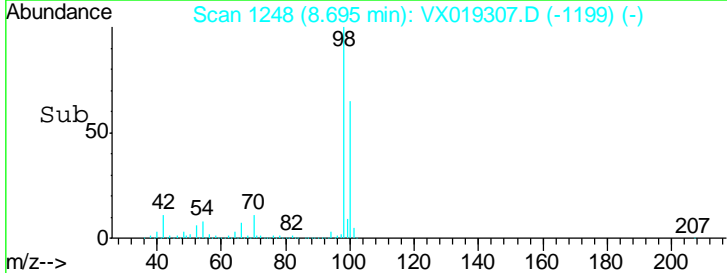
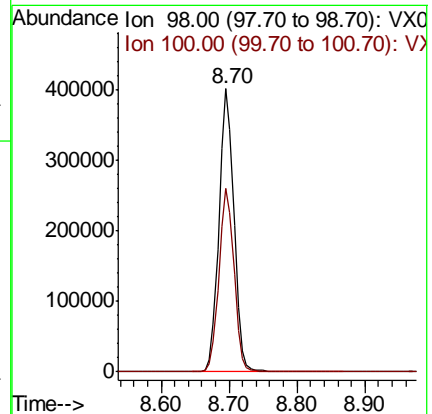
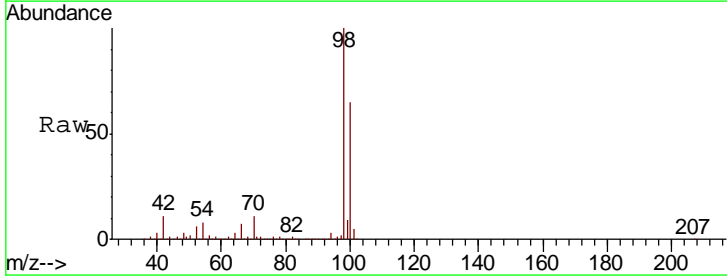
Instrument : MSVOA\_X  
 ClientSampled : MW-6

Tgt Ion	Resp	Lower	Upper
130	100		
95	102.6	0.0	192.0

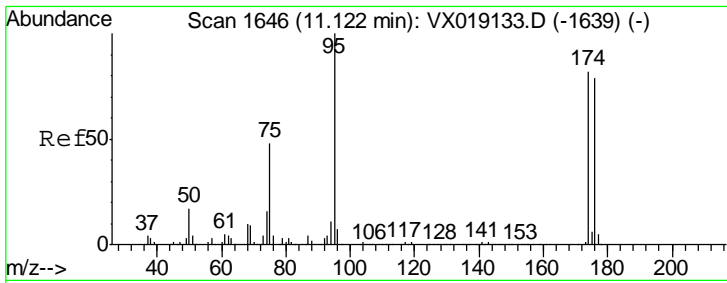


#50  
 Toluene-d8  
 Concen: 52.065 ug/l  
 RT: 8.70 min Scan# 1248  
 Delta R.T. -0.00 min  
 Lab File: VX019307.D  
 Acq: 05 Nov 2020 12:41

Tgt Ion	Resp	Lower	Upper
98	100		
100	65.4	53.0	79.6



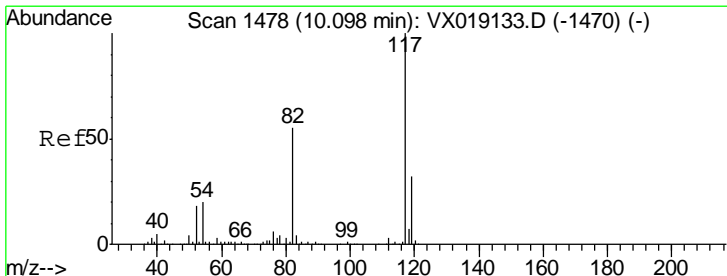
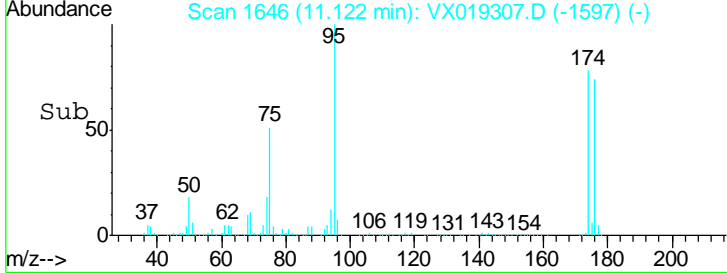
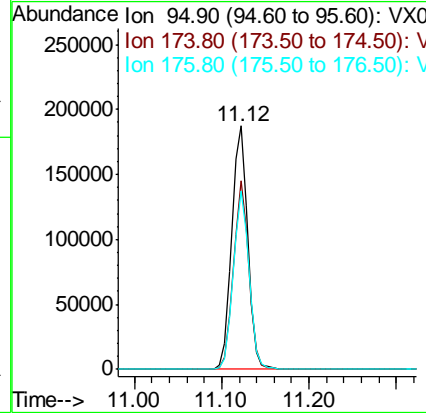
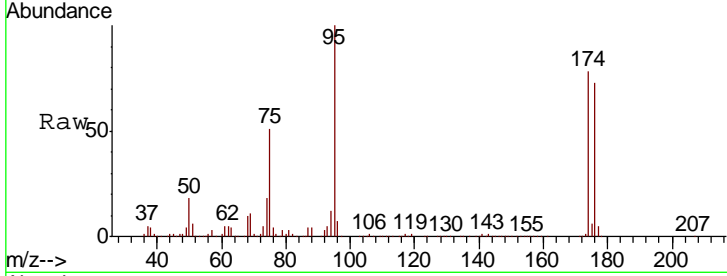




#62  
 4-Bromofluorobenzene  
 Concen: 52.626 ug/l  
 RT: 11.12 min Scan# 1646  
 Delta R.T. -0.00 min  
 Lab File: VX019307.D  
 Acq: 05 Nov 2020 12:41

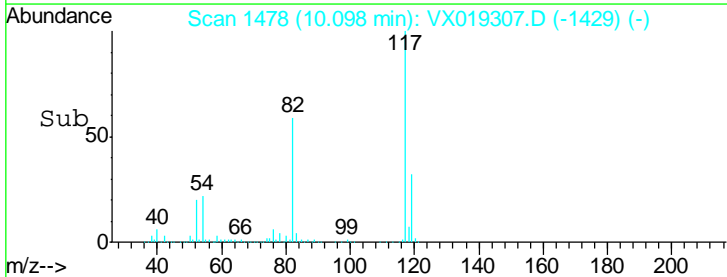
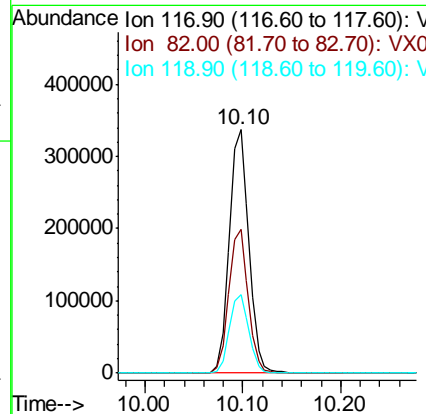
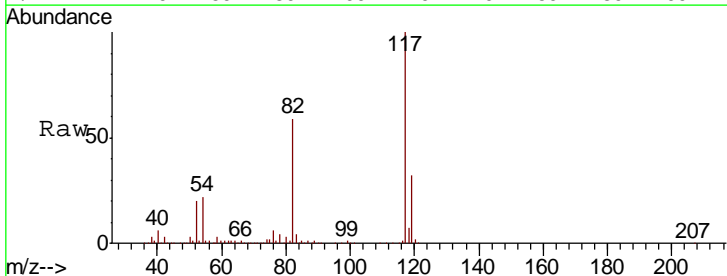
Instrument :  
 MSVOA\_X  
 ClientSampled :  
 MW-6

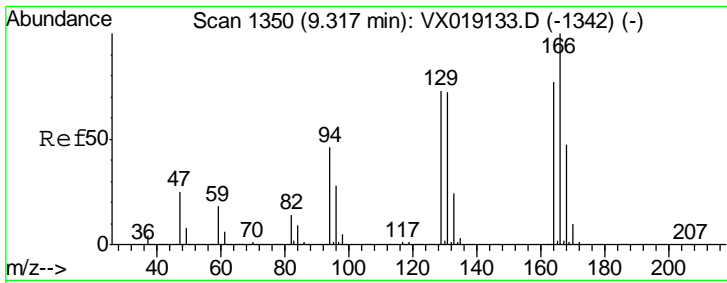
Tgt Ion	Resp	Lower	Upper
95	235861		
174	75.0	0.0	156.0
176	72.7	0.0	149.8



#63  
 Chlorobenzene-d5  
 Concen: 50.000 ug/l  
 RT: 10.10 min Scan# 1478  
 Delta R.T. -0.00 min  
 Lab File: VX019307.D  
 Acq: 05 Nov 2020 12:41

Tgt Ion	Resp	Lower	Upper
117	466587		
82	59.0	43.6	65.4
119	32.3	25.5	38.3

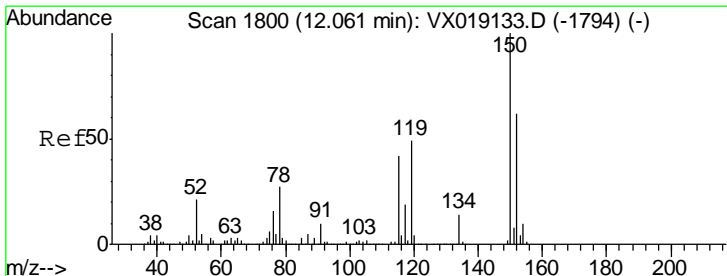
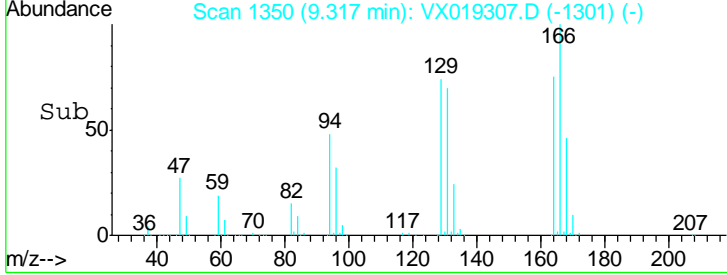
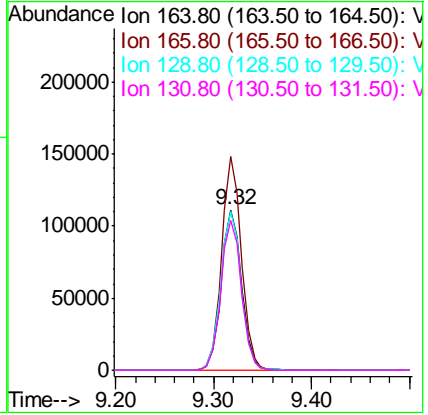
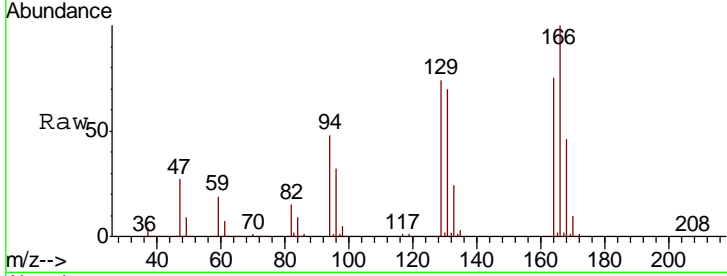




#64  
 Tetrachloroethene  
 Concen: 45.242 ug/l  
 RT: 9.32 min Scan# 1350  
 Delta R.T. -0.00 min  
 Lab File: VX019307.D  
 Acq: 05 Nov 2020 12:41

Instrument :  
 MSVOA\_X  
 ClientSampled :  
 MW-6

Tgt Ion	Resp	Lower	Upper
164	100		
166	133.5	104.1	156.1
129	99.2	76.2	114.4
131	94.0	74.6	112.0



#72  
 1,4-Dichlorobenzene-d4  
 Concen: 50.000 ug/l  
 RT: 12.06 min Scan# 1800  
 Delta R.T. -0.00 min  
 Lab File: VX019307.D  
 Acq: 05 Nov 2020 12:41

Tgt Ion	Resp	Lower	Upper
152	100		
115	61.2	41.9	125.7
150	155.6	0.0	347.8

