

Data Path : Z:\VOASRV\HPCHEM1\MSVOA X\DATA\VX110720\
 Data File : VX019343.D
 Acq On : 06 Nov 2020 15:43
 Operator : JC/MD
 Sample : L4662-08
 Misc : 5.0mL/MSVOA X/WATER
 ALS Vial : 16 Sample Multiplier: 1

Instrument :
 MSVOA_X
 ClientSampleId :
 BP-VPB178-GW-338-340

Quant Time: Nov 09 06:53:55 2020
 Quant Method : Z:\VOASRV\HPCHEM1\MSVOA_X\METHOD\82X102720W.M
 Quant Title : SW846 8260
 QLast Update : Tue Oct 27 13:55:07 2020
 Response via : Initial Calibration

Internal Standards	R.T.	QIon	Response	Conc	Units	Dev(Min)
1) Pentafluorobenzene	5.63	168	303139	50.00	ug/l	0.00
34) 1,4-Difluorobenzene	6.83	114	522783	50.00	ug/l	0.00
63) Chlorobenzene-d5	10.10	117	503747	50.00	ug/l	0.00
72) 1,4-Dichlorobenzene-d4	12.06	152	251778	50.00	ug/l	0.00

System Monitoring Compounds	R.T.	QIon	Response	Conc	Units	Dev(Min)
33) 1,2-Dichloroethane-d4	6.03	65	211485	54.10	ug/l	0.00
Spiked Amount				50.000		
Recovery						= 108.20%
35) Dibromofluoromethane	5.46	113	165653	50.45	ug/l	0.00
Spiked Amount				50.000		
Recovery						= 100.90%
50) Toluene-d8	8.70	98	645158	52.12	ug/l	0.00
Spiked Amount				50.000		
Recovery						= 104.24%
62) 4-Bromofluorobenzene	11.12	95	250888	53.52	ug/l	0.00
Spiked Amount				50.000		
Recovery						= 107.04%

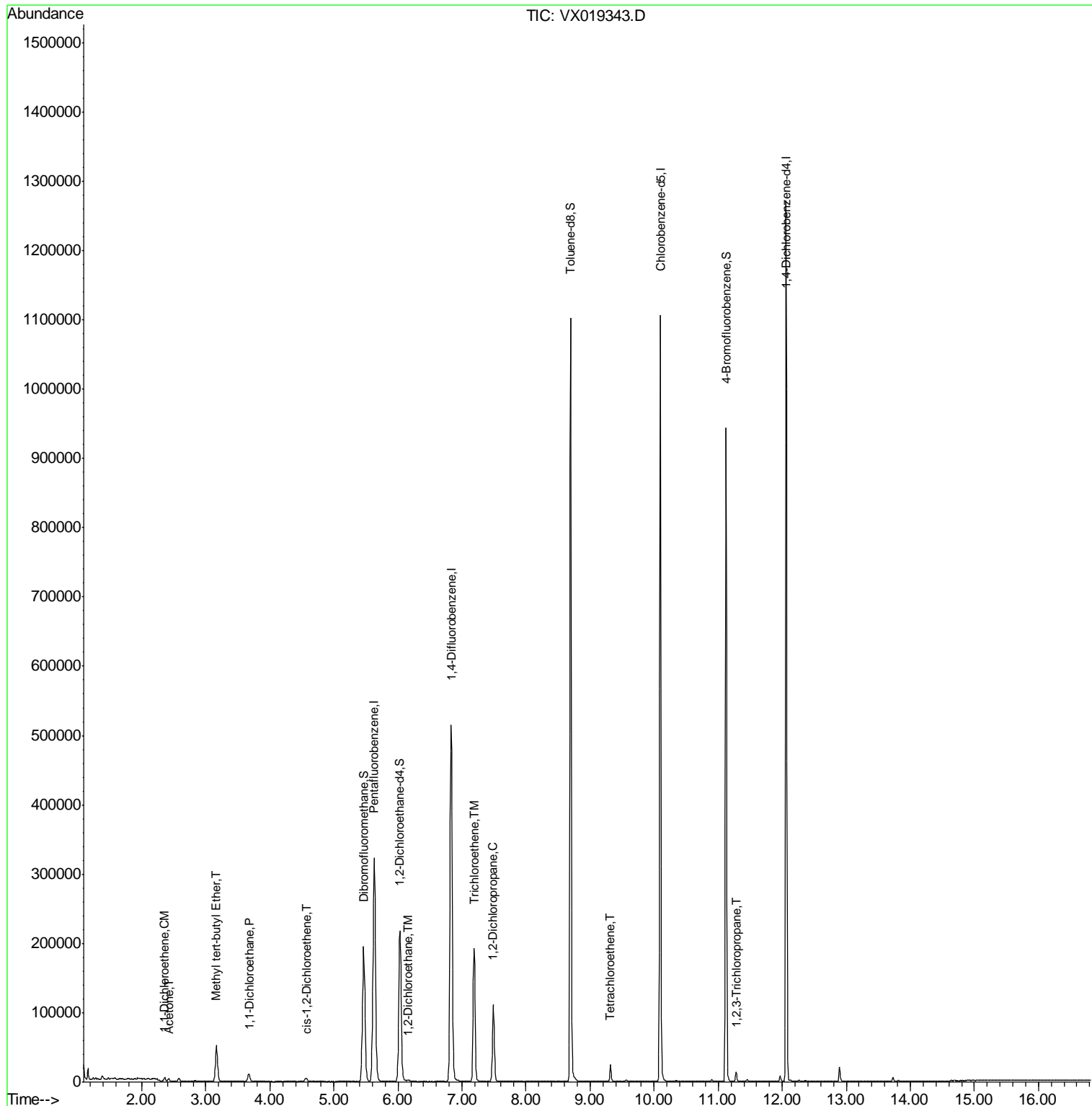
Target Compounds	R.T.	QIon	Response	Conc	Units	Qvalue
12) 1,1-Dichloroethene	2.36	96	1893	0.644	ug/l	97
16) Acetone	2.42	43	4046	3.000	ug/l	97
19) Methyl tert-butyl Ether	3.17	73	58568	5.753	ug/l	96
24) 1,1-Dichloroethane	3.67	63	12729	2.298	ug/l	100
27) cis-1,2-Dichloroethene	4.56	96	3210	0.850	ug/l	90
42) 1,2-Dichloroethane	6.16	62	2139	0.424	ug/l	95
44) Trichloroethene	7.19	130	75280	19.204	ug/l	97
45) 1,2-Dichloropropane	7.49	63	43368	12.936	ug/l	98
64) Tetrachloroethene	9.32	164	4398	1.146	ug/l	96
76) 1,2,3-Trichloropropane	11.28	75	4635	0.892	ug/l	87

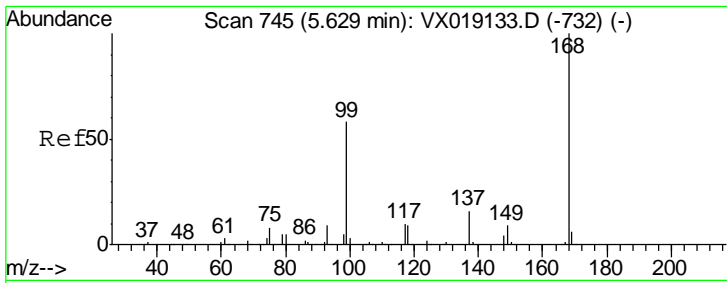
(#) = qualifier out of range (m) = manual integration (+) = signals summed

Data Path : Z:\VOASRV\HPCHEM1\MSVOA X\DATA\VX110720\
 Data File : VX019343.D
 Acq On : 06 Nov 2020 15:43
 Operator : JC/MD
 Sample : L4662-08
 Misc : 5.0mL/MSVOA X/WATER
 ALS Vial : 16 Sample Multiplier: 1

Instrument :
 MSVOA_X
 Client Sampled :
 BP-VPB178-GW-338-340

Quant Time: Nov 09 06:53:55 2020
 Quant Method : Z:\VOASRV\HPCHEM1\MSVOA_X\METHOD\82X102720W.M
 Quant Title : SW846 8260
 QLast Update : Tue Oct 27 13:55:07 2020
 Response via : Initial Calibration

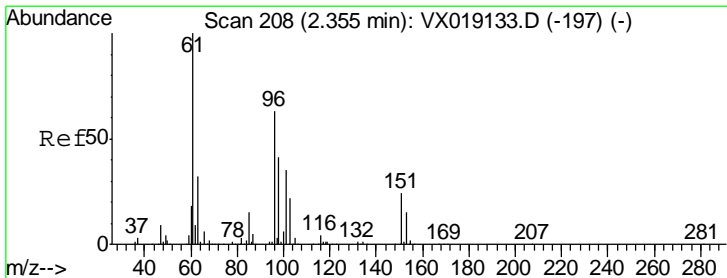
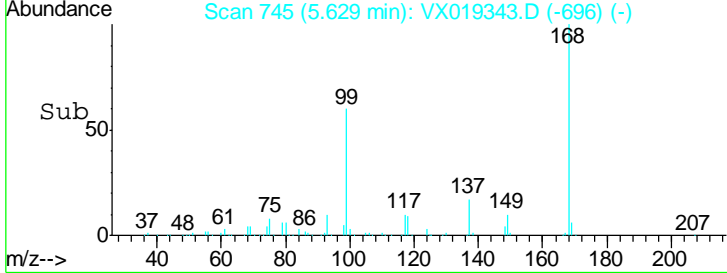
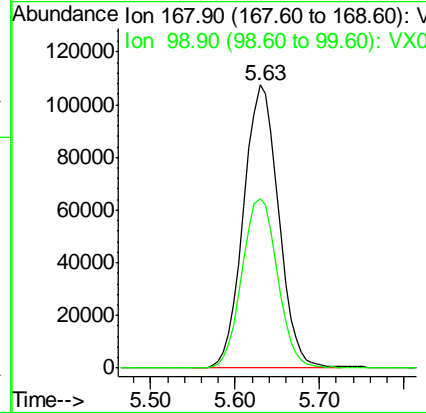
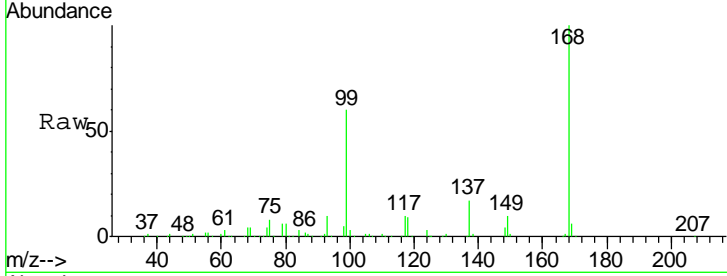




#1
 Pentafluorobenzene
 Concen: 50.000 ug/l
 RT: 5.63 min Scan# 745
 Delta R.T. 0.00 min
 Lab File: VX019343.D
 Acq: 06 Nov 2020 15:43

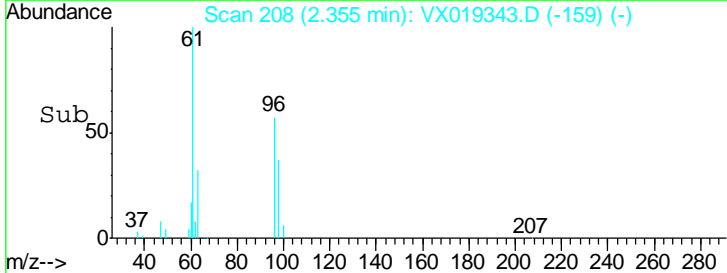
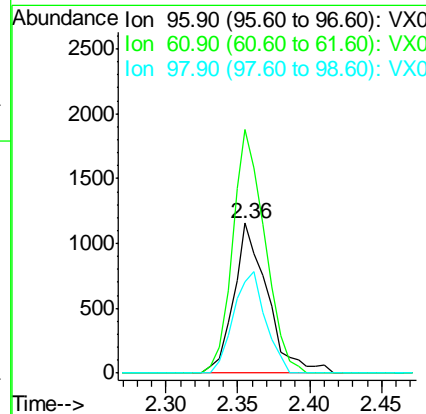
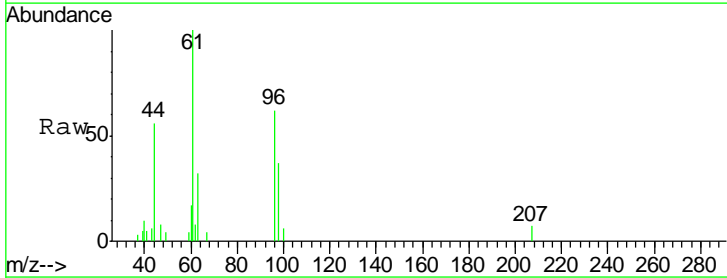
Instrument :
 MSVOA_X
 ClientSampled :
 BP-VPB178-GW-338-340

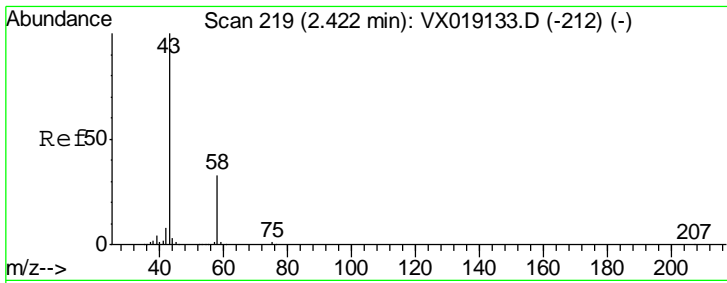
Tgt Ion	Resp	Lower	Upper
168	100		
99	60.0	46.6	69.8



#12
 1,1-Dichloroethene
 Concen: 0.644 ug/l
 RT: 2.36 min Scan# 208
 Delta R.T. -0.00 min
 Lab File: VX019343.D
 Acq: 06 Nov 2020 15:43

Tgt Ion	Resp	Lower	Upper
96	100		
61	162.2	127.7	191.5
98	60.6	52.1	78.1

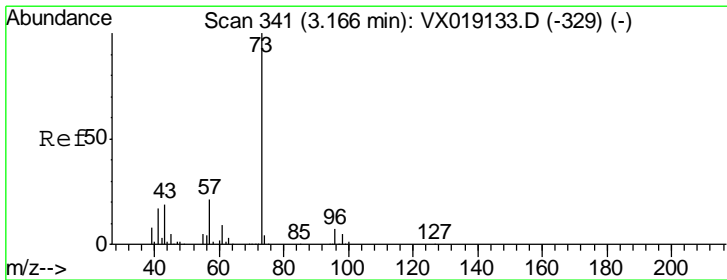
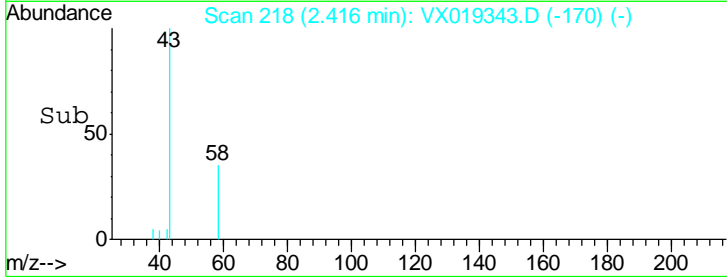
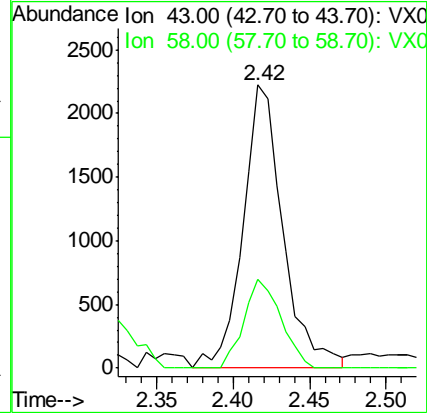
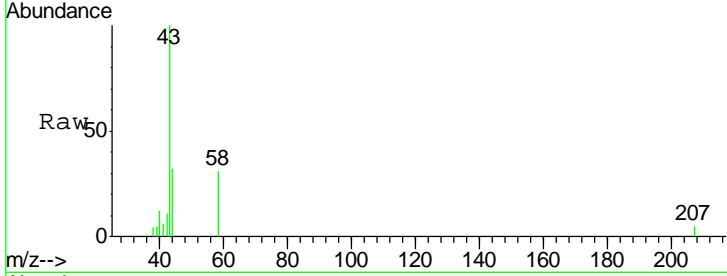




#16
 Acetone
 Concen: 3.000 ug/l
 RT: 2.42 min Scan# 218
 Delta R.T. -0.01 min
 Lab File: VX019343.D
 Acq: 06 Nov 2020 15:43

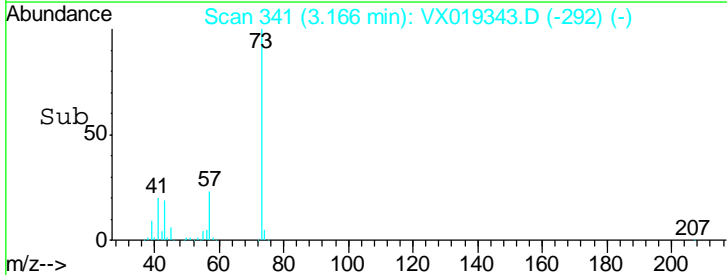
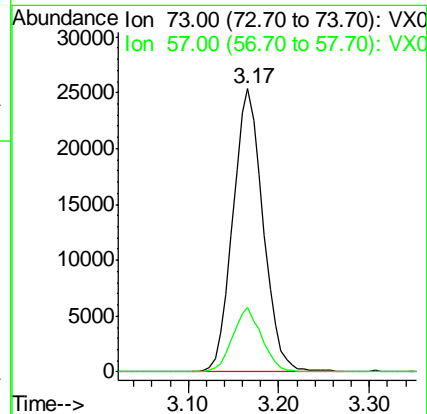
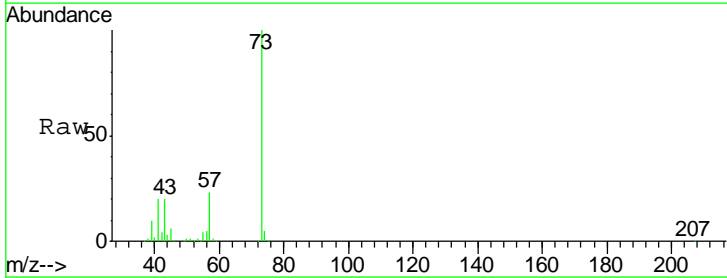
Instrument :
 MSVOA_X
 ClientSampleId :
 BP-VPB178-GW-338-340

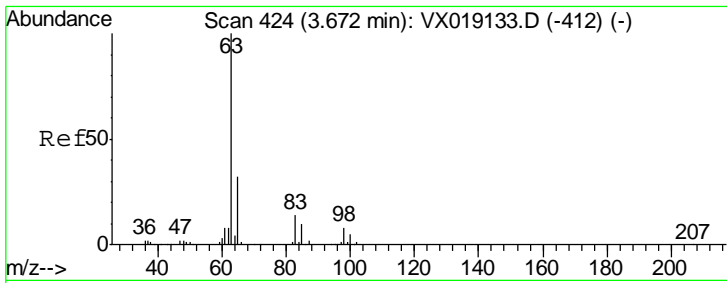
Tgt Ion: 43 Resp: 4046
 Ion Ratio Lower Upper
 43 100
 58 31.4 26.3 39.5



#19
 Methyl tert-butyl Ether
 Concen: 5.753 ug/l
 RT: 3.17 min Scan# 341
 Delta R.T. -0.00 min
 Lab File: VX019343.D
 Acq: 06 Nov 2020 15:43

Tgt Ion: 73 Resp: 58568
 Ion Ratio Lower Upper
 73 100
 57 22.8 16.6 25.0

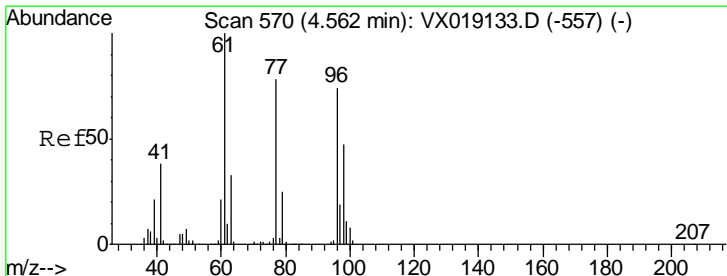
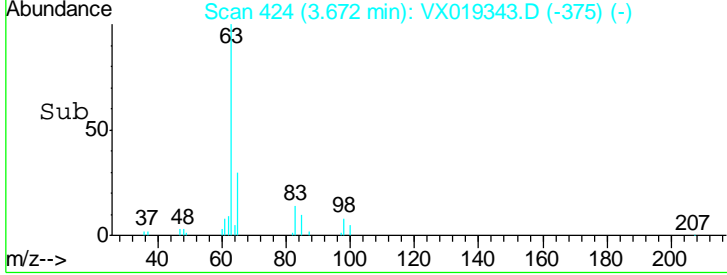
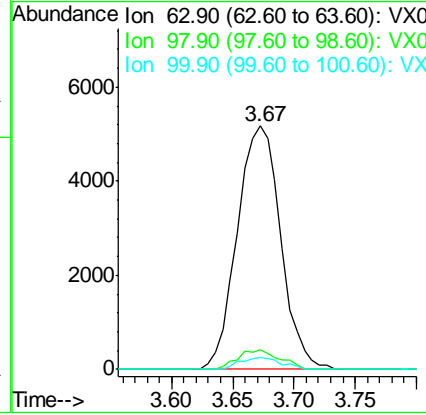
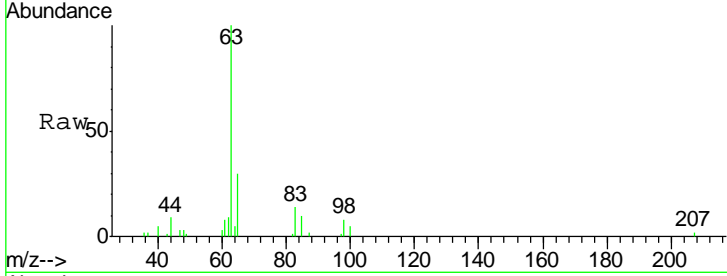




#24
 1,1-Dichloroethane
 Concen: 2.298 ug/l
 RT: 3.67 min Scan# 424
 Delta R.T. 0.00 min
 Lab File: VX019343.D
 Acq: 06 Nov 2020 15:43

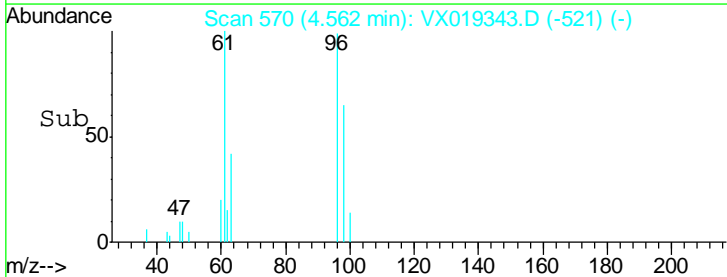
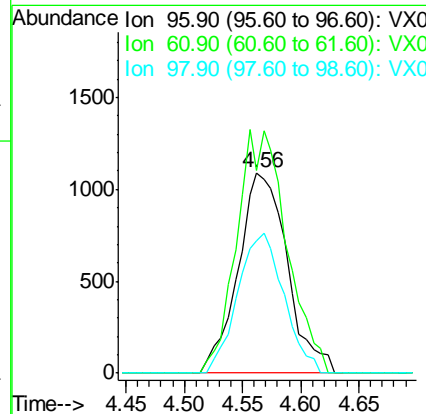
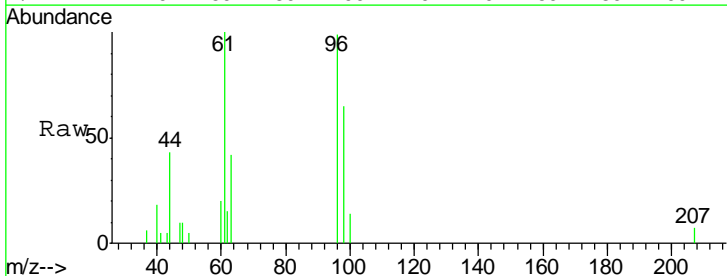
Instrument :
 MSVOA_X
ClientSampled :
 BP-VPB178-GW-338-340

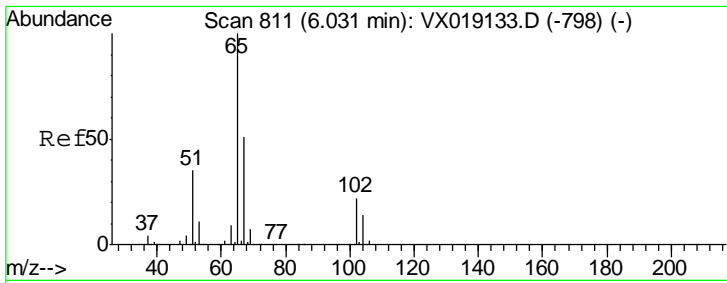
Tgt Ion	Resp	Lower	Upper
63	12729		
98	7.8	3.8	11.4
100	4.8	2.4	7.2



#27
 cis-1,2-Dichloroethene
 Concen: 0.850 ug/l
 RT: 4.56 min Scan# 570
 Delta R.T. 0.00 min
 Lab File: VX019343.D
 Acq: 06 Nov 2020 15:43

Tgt Ion	Resp	Lower	Upper
96	3210		
61	122.5	0.0	278.8
98	65.3	0.0	130.2

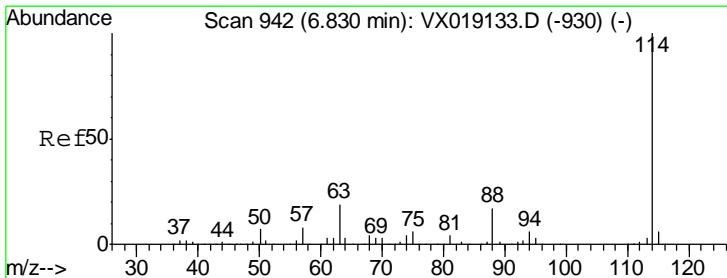
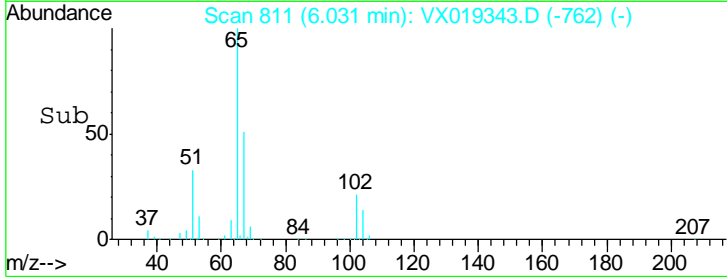
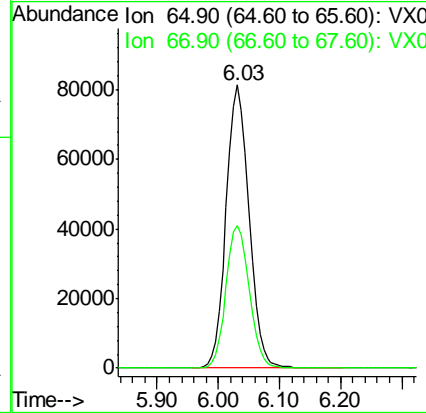
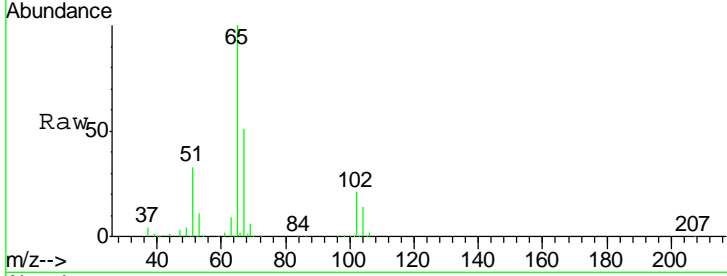




#33
 1,2-Dichloroethane-d4
 Concen: 54.097 ug/l
 RT: 6.03 min Scan# 811
 Delta R.T. 0.00 min
 Lab File: VX019343.D
 Acq: 06 Nov 2020 15:43

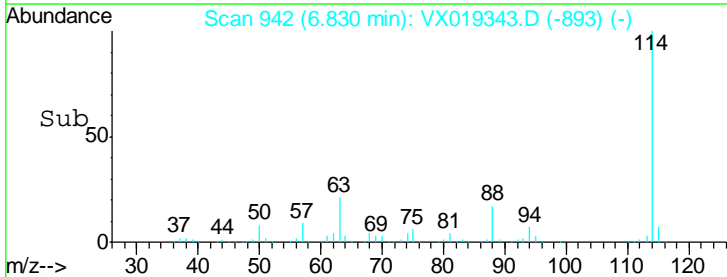
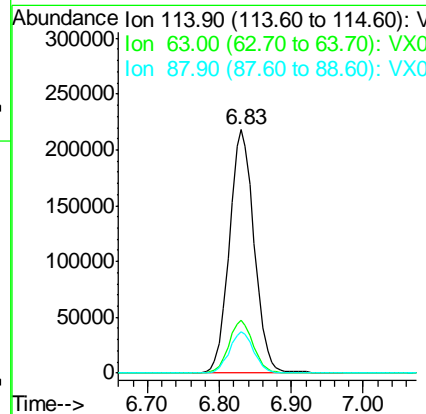
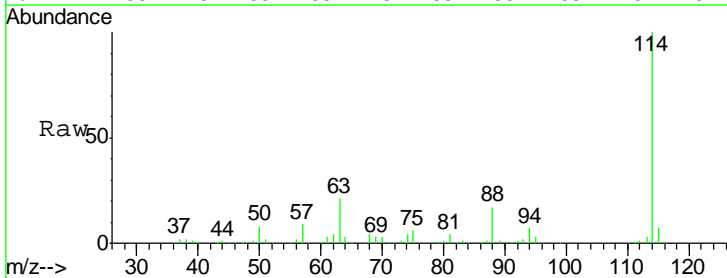
Instrument :
 MSVOA_X
ClientSampleId :
 BP-VPB178-GW-338-340

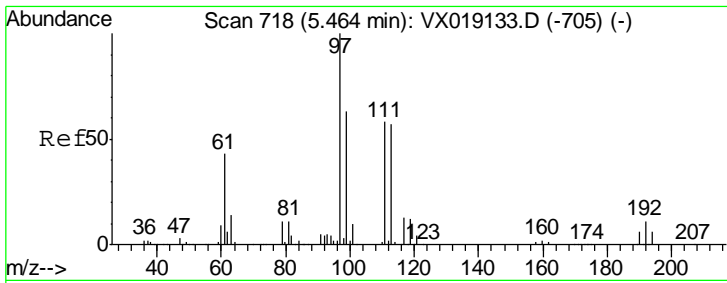
Tgt Ion: 65 Resp: 211485
 Ion Ratio Lower Upper
 65 100
 67 51.5 0.0 103.0



#34
 1,4-Difluorobenzene
 Concen: 50.000 ug/l
 RT: 6.83 min Scan# 942
 Delta R.T. 0.00 min
 Lab File: VX019343.D
 Acq: 06 Nov 2020 15:43

Tgt Ion: 114 Resp: 522783
 Ion Ratio Lower Upper
 114 100
 63 21.5 0.0 38.8
 88 16.8 0.0 34.2

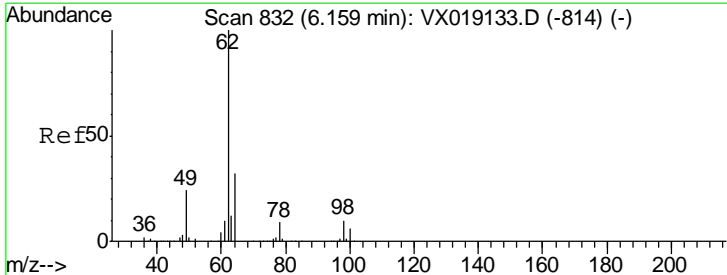
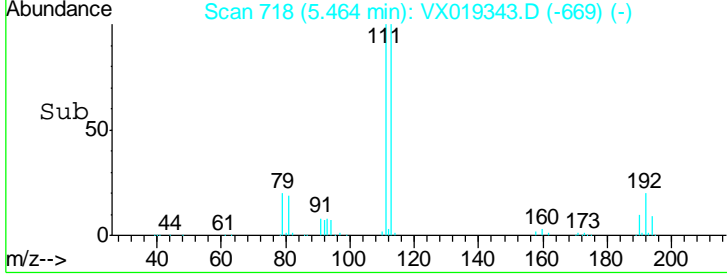
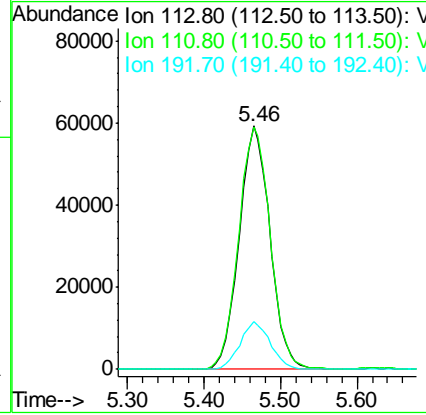
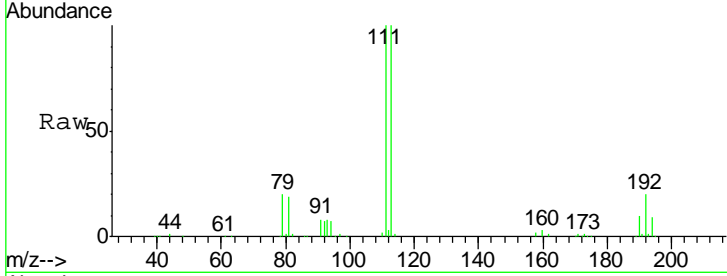




#35
 Dibromofluoromethane
 Concen: 50.446 ug/l
 RT: 5.46 min Scan# 718
 Delta R.T. -0.00 min
 Lab File: VX019343.D
 Acq: 06 Nov 2020 15:43

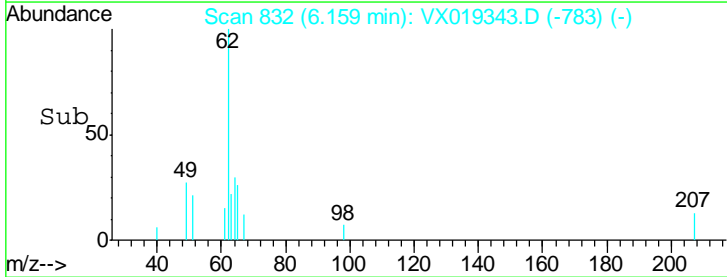
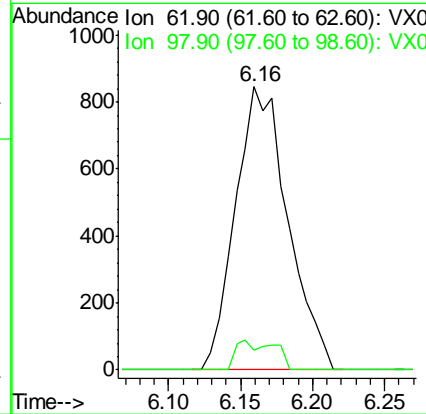
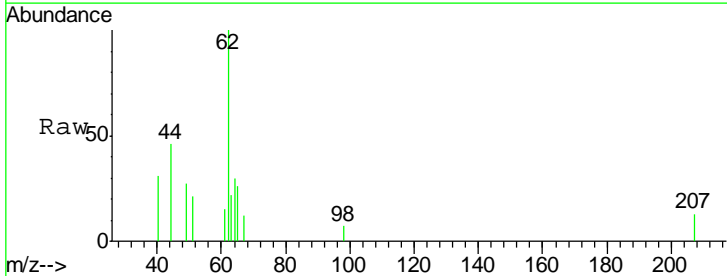
Instrument :
 MSVOA_X
ClientSampled :
 BP-VPB178-GW-338-340

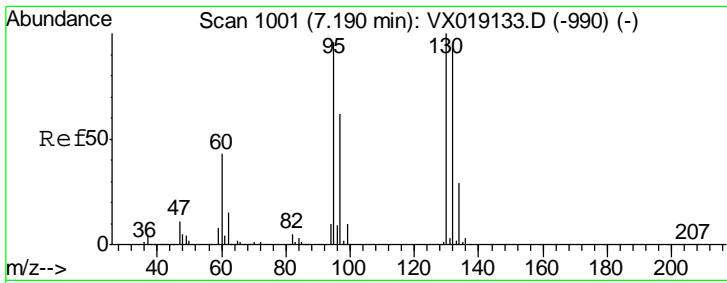
Tgt Ion	Resp	Lower	Upper
113	100		
111	102.5	82.3	123.5
192	19.5	16.2	24.2



#42
 1,2-Dichloroethane
 Concen: 0.424 ug/l
 RT: 6.16 min Scan# 832
 Delta R.T. -0.00 min
 Lab File: VX019343.D
 Acq: 06 Nov 2020 15:43

Tgt Ion	Resp	Lower	Upper
62	100		
98	7.7	0.0	19.0

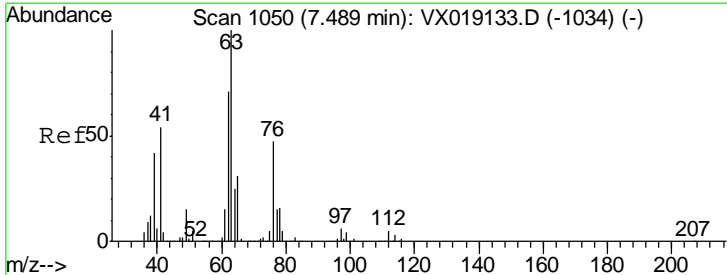
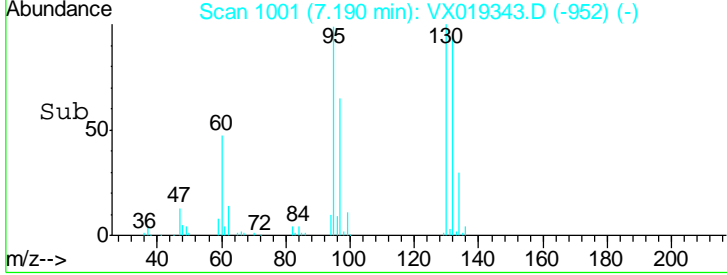
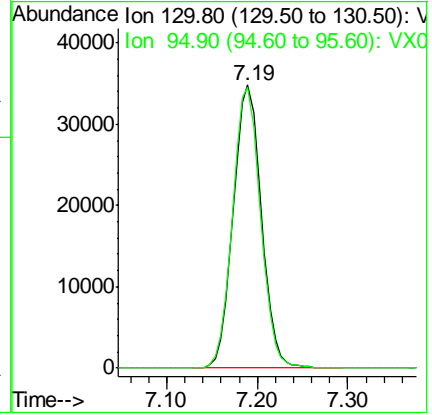
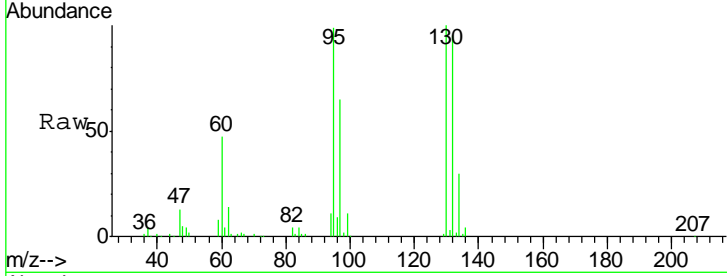




#44
 Trichloroethene
 Concen: 19.204 ug/l
 RT: 7.19 min Scan# 1001
 Delta R.T. -0.00 min
 Lab File: VX019343.D
 Acq: 06 Nov 2020 15:43

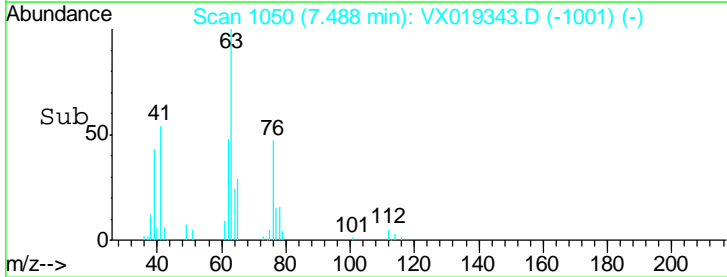
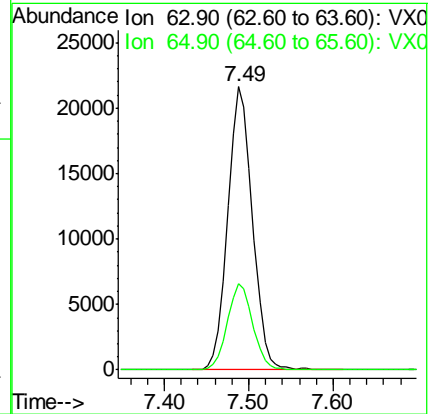
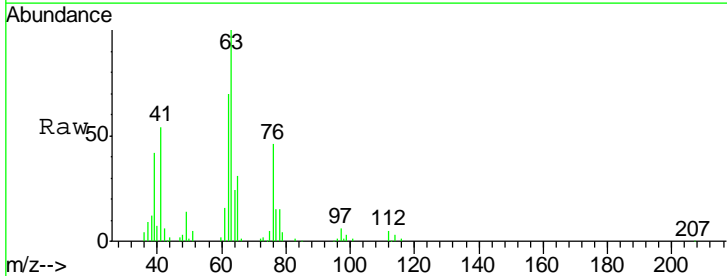
Instrument :
 MSVOA_X
ClientSampled :
 BP-VPB178-GW-338-340

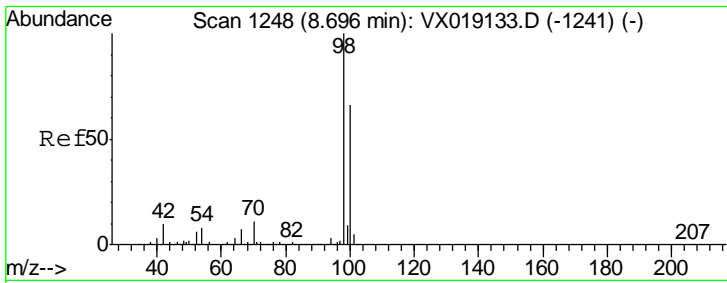
Tgt Ion	Resp	Lower	Upper
130	100		
95	99.2	0.0	192.0



#45
 1,2-Dichloropropane
 Concen: 12.936 ug/l
 RT: 7.49 min Scan# 1050
 Delta R.T. -0.00 min
 Lab File: VX019343.D
 Acq: 06 Nov 2020 15:43

Tgt Ion	Resp	Lower	Upper
63	100		
65	30.5	25.2	37.8

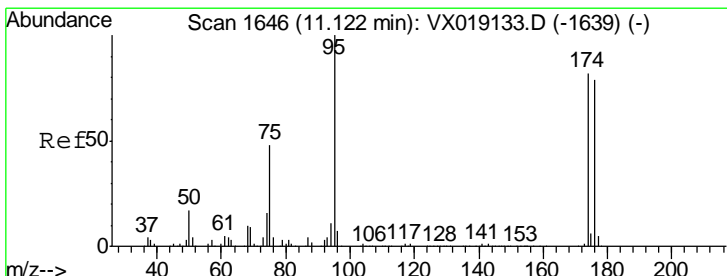
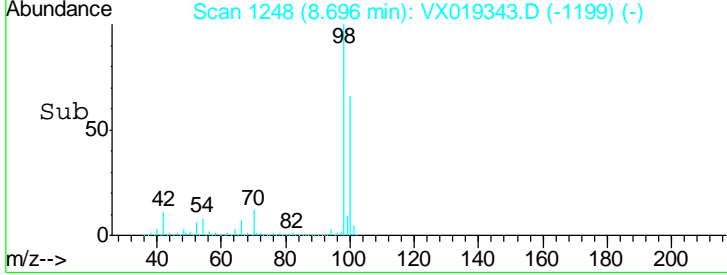
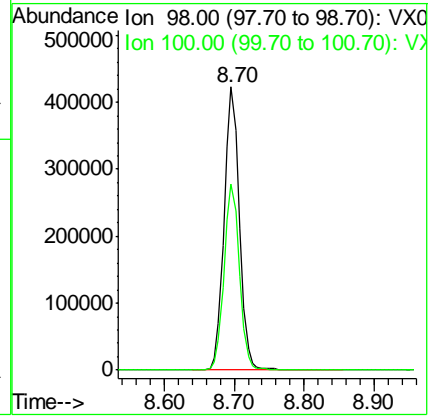
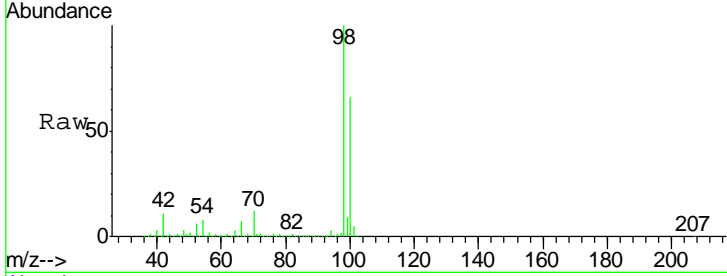




#50
 Toluene-d8
 Concen: 52.118 ug/l
 RT: 8.70 min Scan# 1248
 Delta R.T. -0.00 min
 Lab File: VX019343.D
 Acq: 06 Nov 2020 15:43

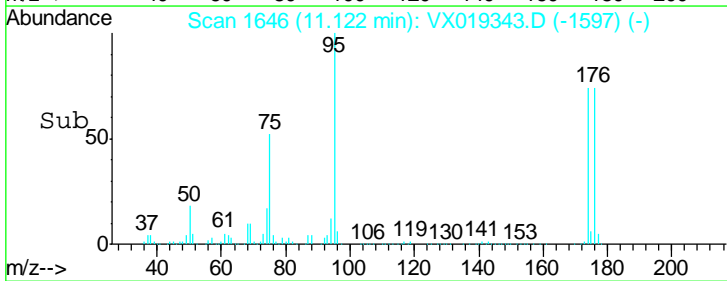
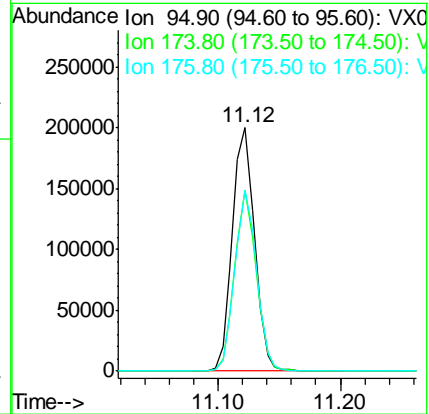
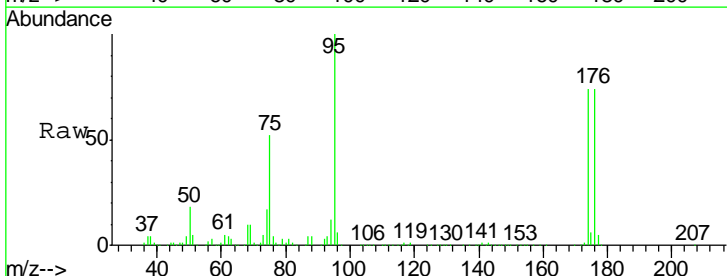
Instrument :
 MSVOA_X
ClientSampled :
 BP-VPB178-GW-338-340

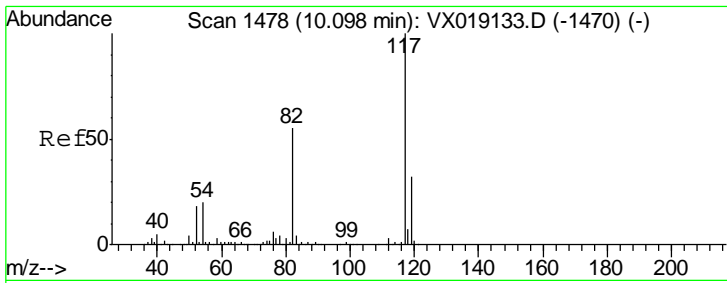
Tgt Ion	Resp	Lower	Upper
98	645158		
100	100		
100	66.3	53.0	79.6



#62
 4-Bromofluorobenzene
 Concen: 53.518 ug/l
 RT: 11.12 min Scan# 1646
 Delta R.T. -0.00 min
 Lab File: VX019343.D
 Acq: 06 Nov 2020 15:43

Tgt Ion	Resp	Lower	Upper
95	250888		
95	100		
174	72.2	0.0	156.0
176	72.7	0.0	149.8

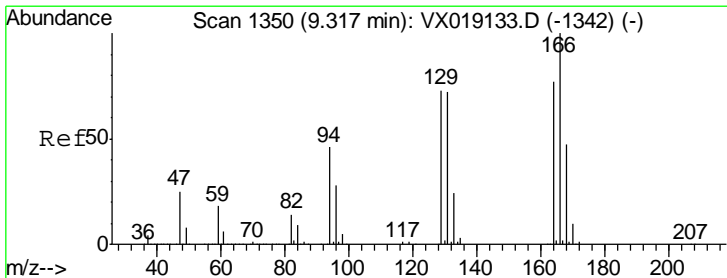
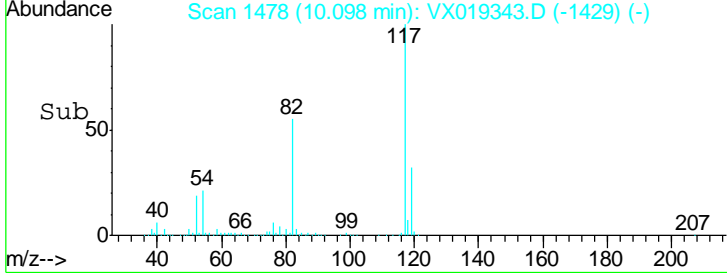
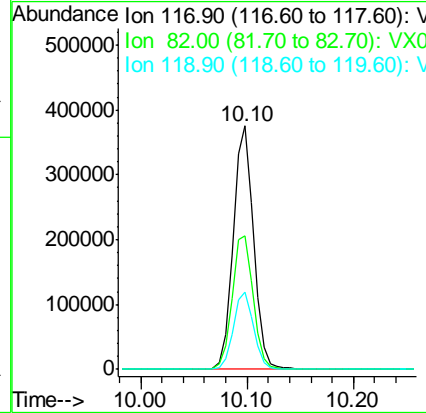
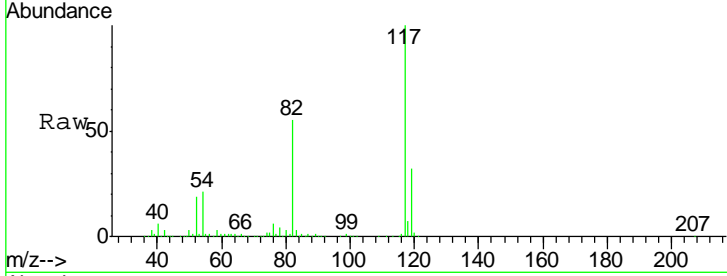




#63
 Chlorobenzene-d5
 Concen: 50.000 ug/l
 RT: 10.10 min Scan# 1478
 Delta R.T. -0.00 min
 Lab File: VX019343.D
 Acq: 06 Nov 2020 15:43

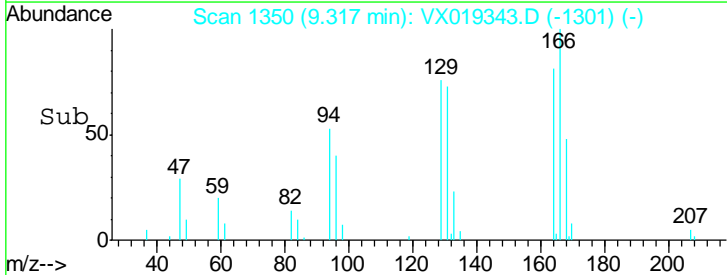
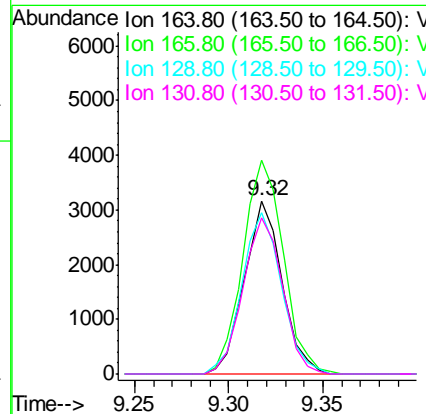
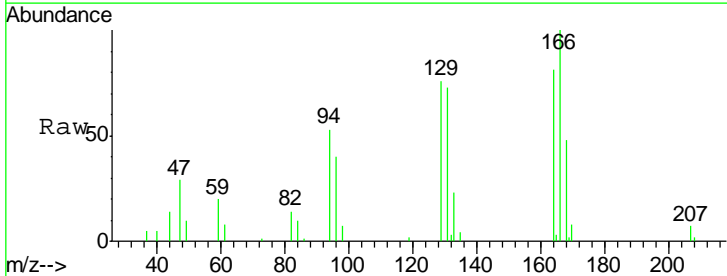
Instrument : MSVOA_X
 ClientSampled : BP-VPB178-GW-338-340

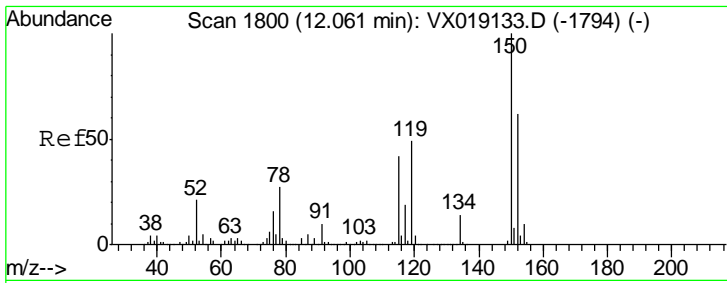
Tgt Ion	Resp	Lower	Upper
117	100		
82	54.9	43.6	65.4
119	31.8	25.5	38.3



#64
 Tetrachloroethene
 Concen: 1.146 ug/l
 RT: 9.32 min Scan# 1350
 Delta R.T. -0.00 min
 Lab File: VX019343.D
 Acq: 06 Nov 2020 15:43

Tgt Ion	Resp	Lower	Upper
164	100		
166	123.5	104.1	156.1
129	93.5	76.2	114.4
131	90.1	74.6	112.0

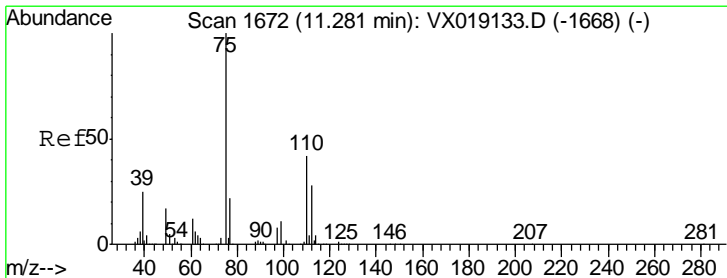
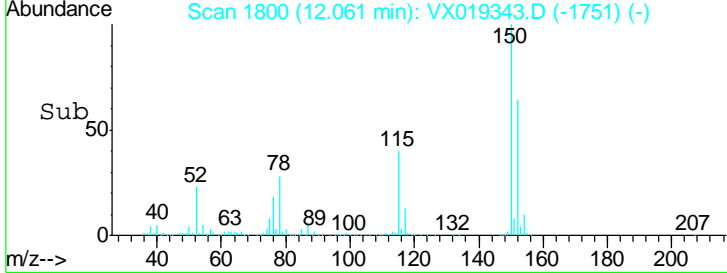
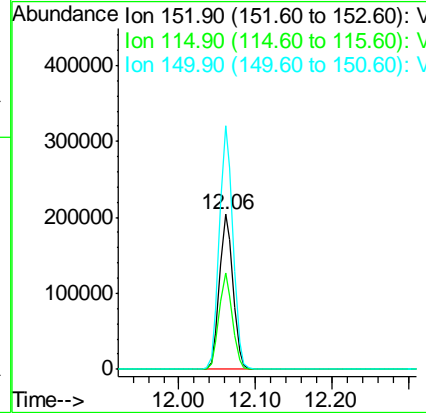
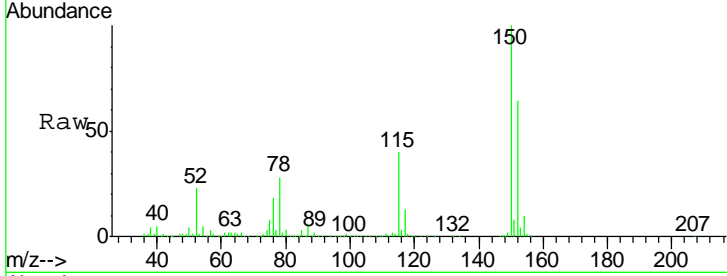




#72
 1,4-Dichlorobenzene-d4
 Concen: 50.000 ug/l
 RT: 12.06 min Scan# 1800
 Delta R.T. 0.00 min
 Lab File: VX019343.D
 Acq: 06 Nov 2020 15:43

Instrument : MSVOA_X
 ClientSampled : BP-VPB178-GW-338-340

Tgt Ion	Resp	Lower	Upper
152	100		
115	61.0	41.9	125.7
150	156.8	0.0	347.8



#76
 1,2,3-Trichloropropane
 Concen: 0.892 ug/l
 RT: 11.28 min Scan# 1672
 Delta R.T. -0.00 min
 Lab File: VX019343.D
 Acq: 06 Nov 2020 15:43

Tgt Ion	Resp	Lower	Upper
75	100		
77	32.6	20.3	60.9

