

Data Path : Z:\voasrv\HPCHEM1\MSVOA_X\Data\VX110722\
 Data File : VX032631.D
 Acq On : 07 Nov 2022 16:48
 Operator : JC/MD
 Sample : N5484-25
 Misc : 5.0mL/MSVOA_X/WATER
 ALS Vial : 18 Sample Multiplier: 1

Instrument :
 MSVOA_X
ClientSampleId :
 DUP110422

Quant Time: Nov 08 03:15:13 2022
 Quant Method : Z:\voasrv\HPCHEM1\MSVOA_X\Method\82X102622W.M
 Quant Title : SW846 8260
 QLast Update : Thu Oct 27 08:28:06 2022
 Response via : Initial Calibration

Manual Integrations
APPROVED
 Reviewed By :John Carlone 11/08/2022
 Supervised By :Mahesh Dadoda 11/08/2022

Compound	R.T.	QIon	Response	Conc	Units	Dev(Min)
Internal Standards						
1) Pentafluorobenzene	5.556	168	109993	50.000	ug/l	0.00
34) 1,4-Difluorobenzene	6.763	114	182658	50.000	ug/l	0.00
63) Chlorobenzene-d5	10.055	117	162611	50.000	ug/l	0.00
72) 1,4-Dichlorobenzene-d4	12.024	152	80803	50.000	ug/l	0.00
System Monitoring Compounds						
33) 1,2-Dichloroethane-d4	5.958	65	75943	49.690	ug/l	0.00
Spiked Amount	50.000	Range 78 - 117	Recovery =	99.380%		
35) Dibromofluoromethane	5.385	113	58662	45.024	ug/l	0.00
Spiked Amount	50.000	Range 75 - 124	Recovery =	90.040%		
50) Toluene-d8	8.653	98	222999	49.221	ug/l	0.00
Spiked Amount	50.000	Range 92 - 112	Recovery =	98.440%		
62) 4-Bromofluorobenzene	11.079	95	86871	49.087	ug/l	0.00
Spiked Amount	50.000	Range 83 - 123	Recovery =	98.180%		
Target Compounds						
						Qvalue
16) Acetone	2.380	43	2981	5.367	ug/l	98
25) 2-Butanone	4.574	43	2151	2.499	ug/l	97
31) Cyclohexane	5.470	56	42187	22.766	ug/l #	93
39) Methylcyclohexane	7.385	83	71695	33.398	ug/l	97
52) Toluene	8.726	92	917	0.274	ug/l	86
67) Ethyl Benzene	10.195	91	7996	1.228	ug/l	97
68) m/p-Xylenes	10.299	106	102243	40.423	ug/l	99
69) o-Xylene	10.640	106	78776	32.033	ug/l	99
73) Isopropylbenzene	10.963	105	23092	3.606	ug/l	98
78) n-propylbenzene	11.305	91	11621	1.575	ug/l #	52
80) 1,3,5-Trimethylbenzene	11.451	105	197582	36.105	ug/l	99
84) 1,2,4-Trimethylbenzene	11.750	105	487271	89.525	ug/l	99
85) sec-Butylbenzene	11.890	105	17059	2.595	ug/l	94
86) p-Isopropyltoluene	12.012	119	13826	2.479	ug/l	98
89) n-Butylbenzene	12.323	91	60289m	12.423	ug/l	
95) Naphthalene	13.774	128	67902	10.704	ug/l	98

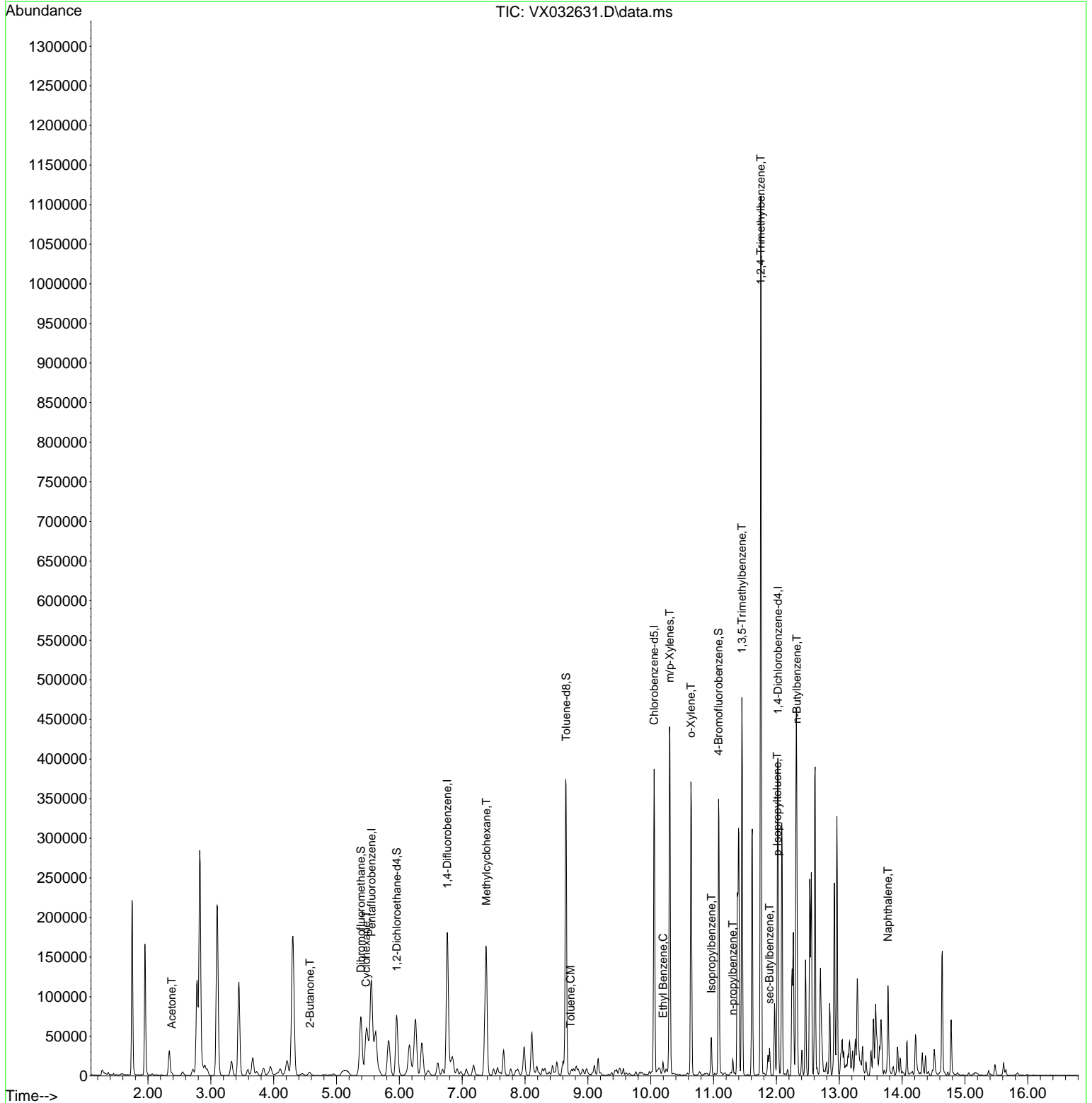
(#) = qualifier out of range (m) = manual integration (+) = signals summed

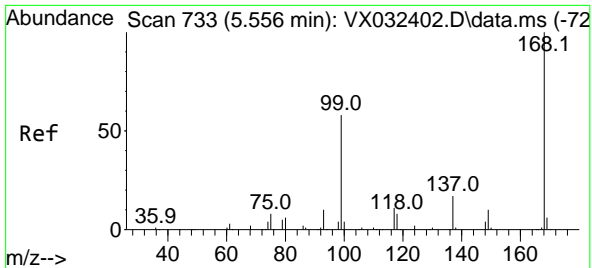
Data Path : Z:\voasrv\HPCHEM1\MSVOA_X\Data\VX110722\
 Data File : VX032631.D
 Acq On : 07 Nov 2022 16:48
 Operator : JC/MD
 Sample : N5484-25
 Misc : 5.0mL/MSVOA_X/WATER
 ALS Vial : 18 Sample Multiplier: 1

Instrument :
 MSVOA_X
ClientSampleId :
 DUP110422

Quant Time: Nov 08 03:15:13 2022
 Quant Method : Z:\voasrv\HPCHEM1\MSVOA_X\Method\82X102622W.M
 Quant Title : SW846 8260
 QLast Update : Thu Oct 27 08:28:06 2022
 Response via : Initial Calibration

Manual Integrations
APPROVED
 Reviewed By :John Carlone 11/08/2022
 Supervised By :Mahesh Dadoda 11/08/2022





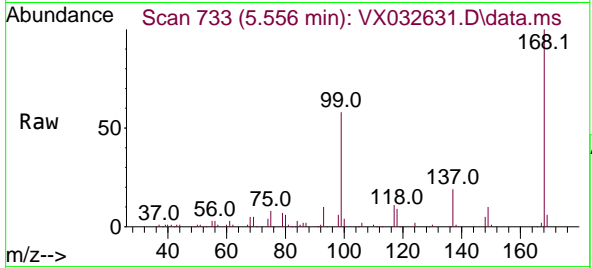
#1
 Pentafluorobenzene
 Concen: 50.000 ug/l
 RT: 5.556 min Scan# 733
 Delta R.T. -0.000 min
 Lab File: VX032631.D
 Acq: 07 Nov 2022 16:48

Instrument :

MSVOA_X

ClientSampleId :

DUP110422



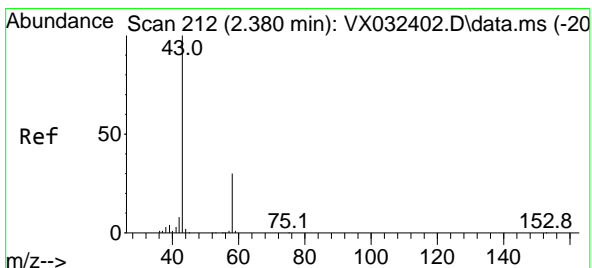
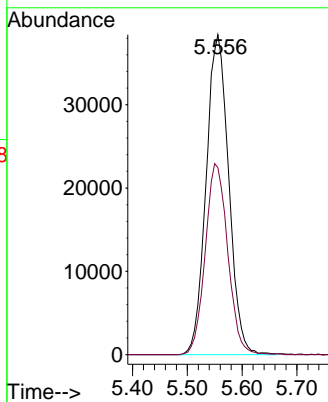
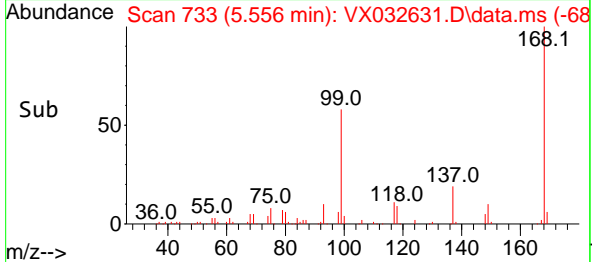
Tgt Ion: 168 Resp: 109993
 Ion Ratio Lower Upper
 168 100
 99 58.4 46.1 69.1

Manual Integrations

APPROVED

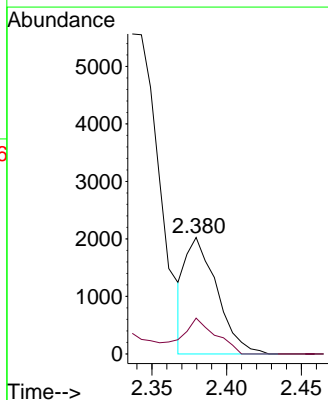
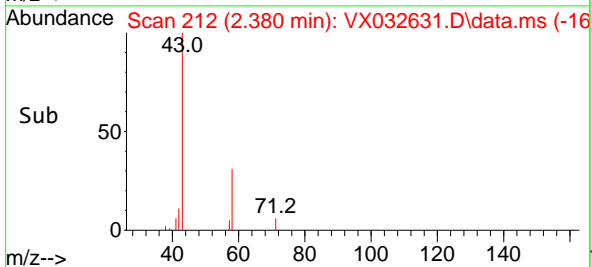
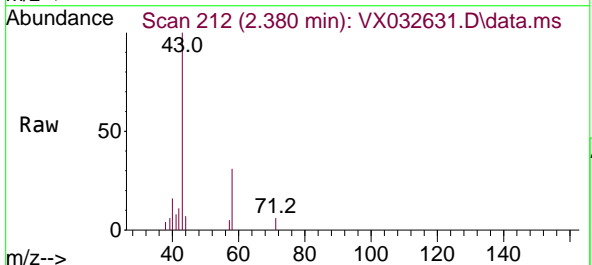
Reviewed By : John Carlone 11/08/2022

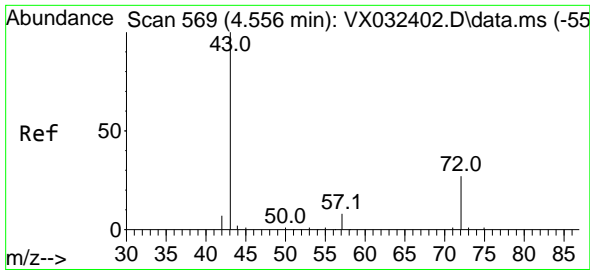
Supervised By : Mahesh Dadoda 11/08/2022



#16
 Acetone
 Concen: 5.367 ug/l
 RT: 2.380 min Scan# 212
 Delta R.T. -0.000 min
 Lab File: VX032631.D
 Acq: 07 Nov 2022 16:48

Tgt Ion: 43 Resp: 2981
 Ion Ratio Lower Upper
 43 100
 58 30.7 23.8 35.8





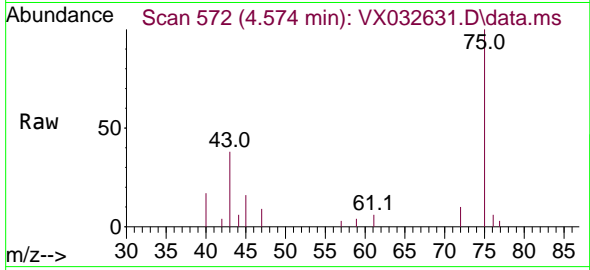
#25
 2-Butanone
 Concen: 2.499 ug/l
 RT: 4.574 min Scan# 51
 Delta R.T. 0.018 min
 Lab File: VX032631.D
 Acq: 07 Nov 2022 16:48

Instrument :

MSVOA_X

ClientSampleId :

DUP110422

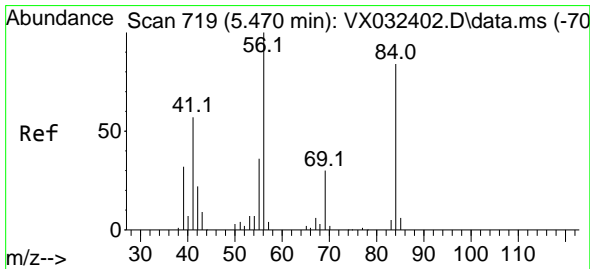
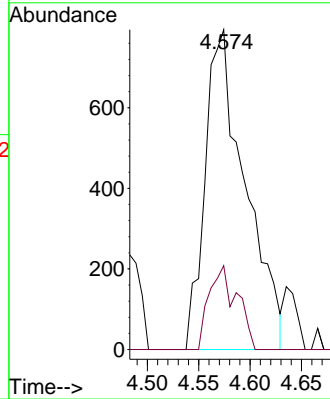
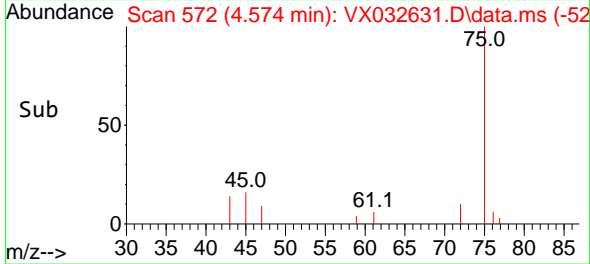


Tgt Ion: 43 Resp: 215
 Ion Ratio Lower Upper
 43 100
 72 26.2 22.2 33.2

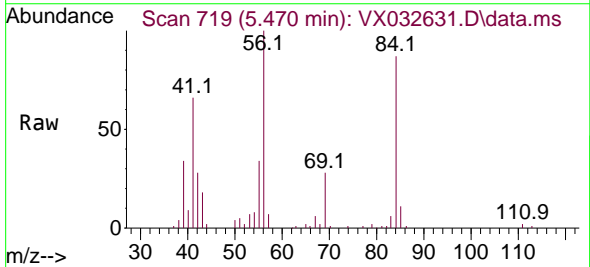
Manual Integrations

APPROVED

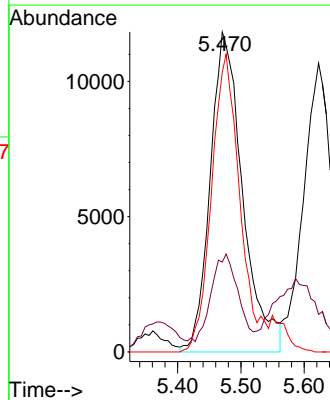
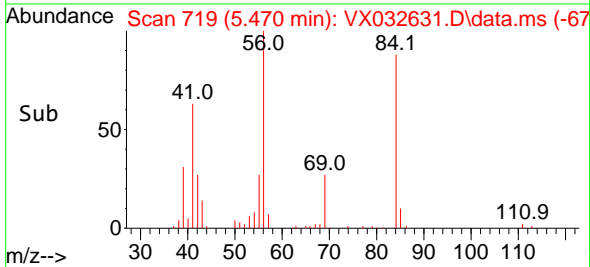
Reviewed By :John Carlone 11/08/2022
 Supervised By :Mahesh Dadoda 11/08/2022

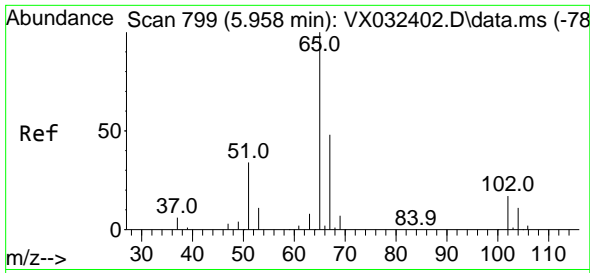


#31
 Cyclohexane
 Concen: 22.766 ug/l
 RT: 5.470 min Scan# 719
 Delta R.T. -0.000 min
 Lab File: VX032631.D
 Acq: 07 Nov 2022 16:48



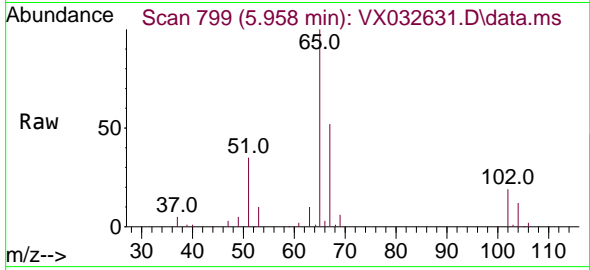
Tgt Ion: 56 Resp: 42187
 Ion Ratio Lower Upper
 56 100
 69 23.9 24.1 36.1#
 84 88.7 66.9 100.3





#33
 1,2-Dichloroethane-d4
 Concen: 49.690 ug/l
 RT: 5.958 min Scan# 799
 Delta R.T. -0.000 min
 Lab File: VX032631.D
 Acq: 07 Nov 2022 16:48

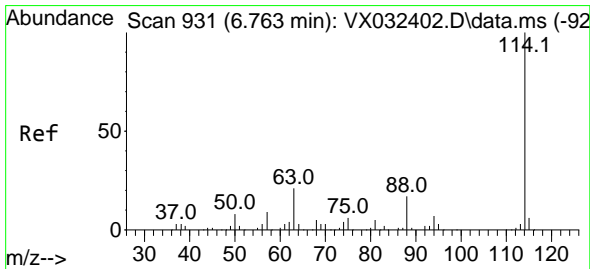
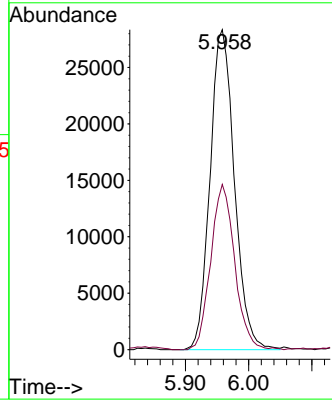
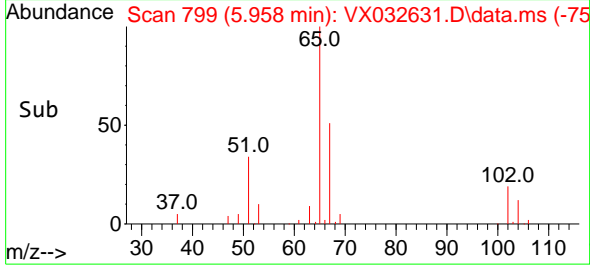
Instrument : MSVOA_X
 Client Sample Id : DUP110422



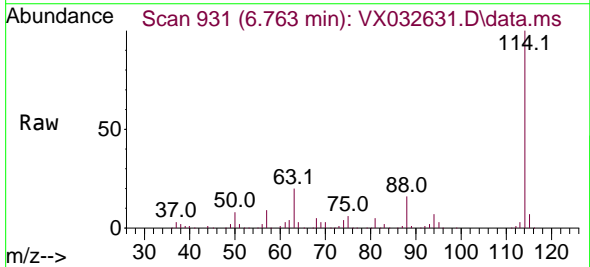
Tgt Ion: 65 Resp: 75943
 Ion Ratio Lower Upper
 65 100
 67 50.6 0.0 101.8

Manual Integrations
APPROVED

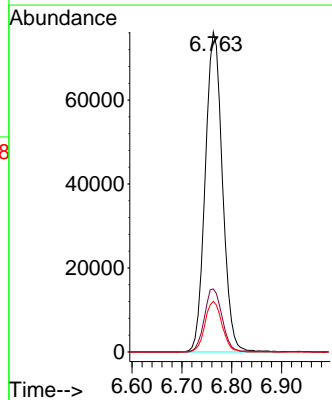
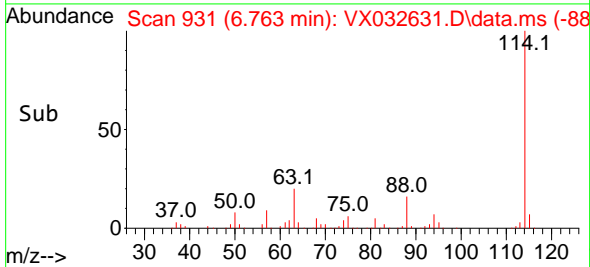
Reviewed By : John Carlone 11/08/2022
 Supervised By : Mahesh Dadoda 11/08/2022

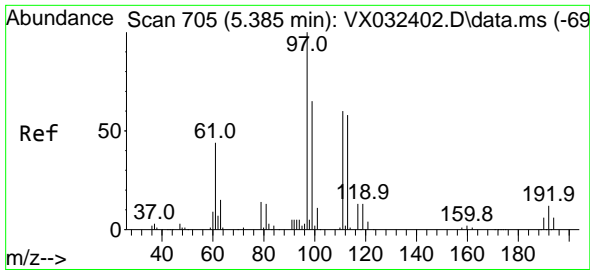


#34
 1,4-Difluorobenzene
 Concen: 50.000 ug/l
 RT: 6.763 min Scan# 931
 Delta R.T. -0.000 min
 Lab File: VX032631.D
 Acq: 07 Nov 2022 16:48



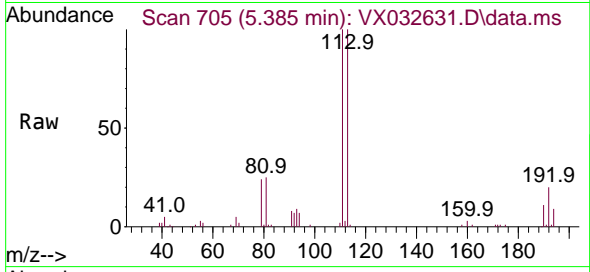
Tgt Ion: 114 Resp: 182658
 Ion Ratio Lower Upper
 114 100
 63 19.7 0.0 41.6
 88 15.8 0.0 33.4





#35
 Dibromofluoromethane
 Concen: 45.024 ug/l
 RT: 5.385 min Scan# 705
 Delta R.T. -0.000 min
 Lab File: VX032631.D
 Acq: 07 Nov 2022 16:48

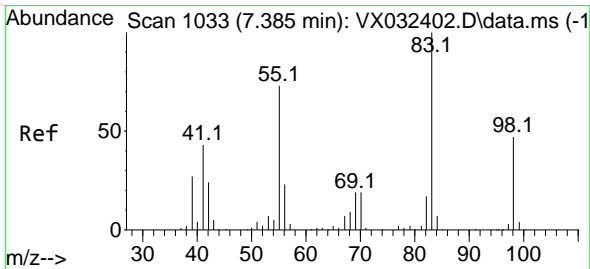
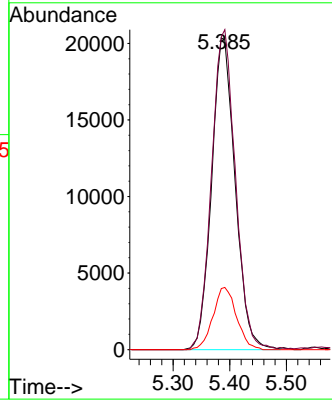
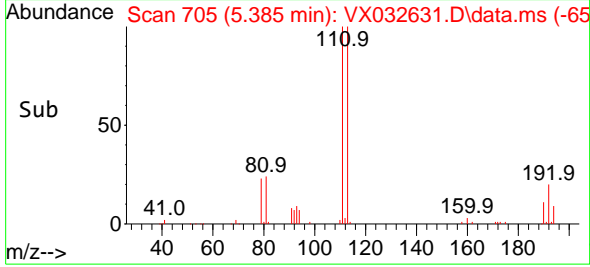
Instrument : MSVOA_X
 Client Sample Id : DUP110422



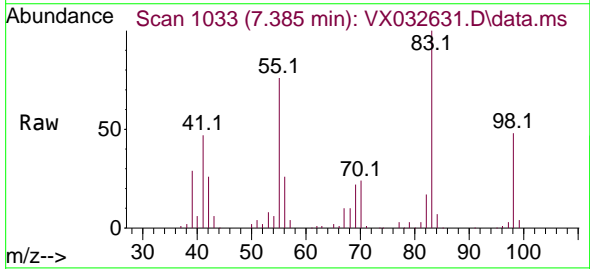
Tgt Ion: 113 Resp: 58662
 Ion Ratio Lower Upper
 113 100
 111 104.1 82.4 123.6
 192 19.9 15.4 23.2

Manual Integrations
 APPROVED

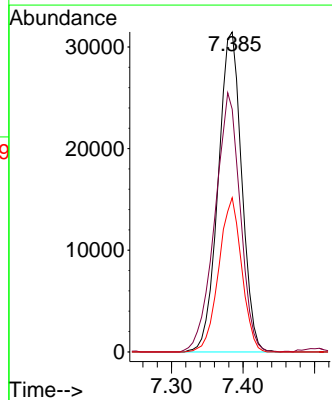
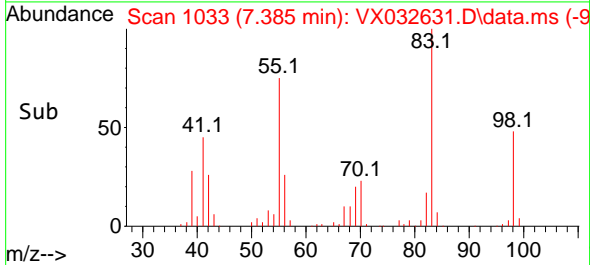
Reviewed By : John Carlone 11/08/2022
 Supervised By : Mahesh Dadoda 11/08/2022

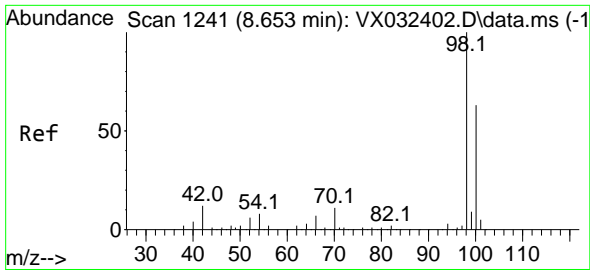


#39
 Methylcyclohexane
 Concen: 33.398 ug/l
 RT: 7.385 min Scan# 1033
 Delta R.T. -0.000 min
 Lab File: VX032631.D
 Acq: 07 Nov 2022 16:48



Tgt Ion: 83 Resp: 71695
 Ion Ratio Lower Upper
 83 100
 55 75.8 58.4 87.6
 98 48.2 37.2 55.8





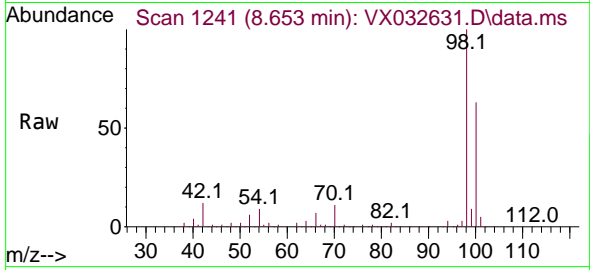
#50
 Toluene-d8
 Concen: 49.221 ug/l
 RT: 8.653 min Scan# 1241
 Delta R.T. -0.000 min
 Lab File: VX032631.D
 Acq: 07 Nov 2022 16:48

Instrument :

MSVOA_X

Client SampleId :

DUP110422



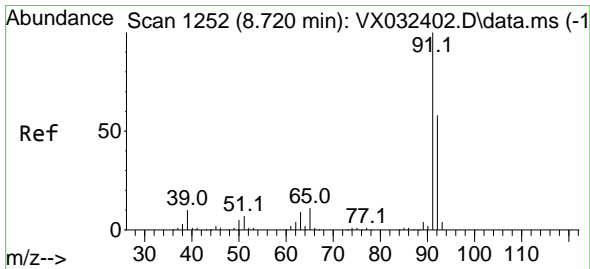
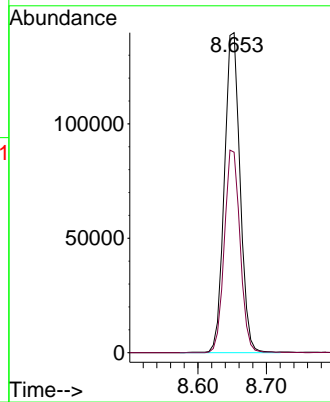
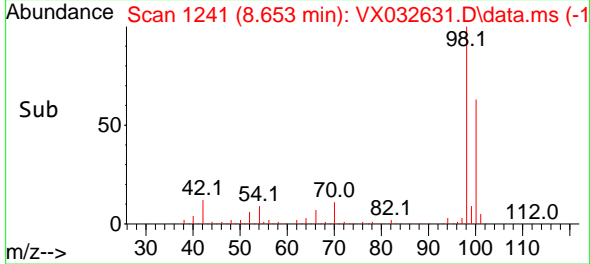
Tgt Ion: 98 Resp: 222999
 Ion Ratio Lower Upper
 98 100
 100 63.5 50.9 76.3

Manual Integrations

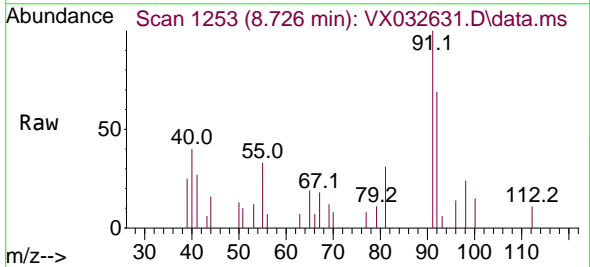
APPROVED

Reviewed By :John Carlone 11/08/2022

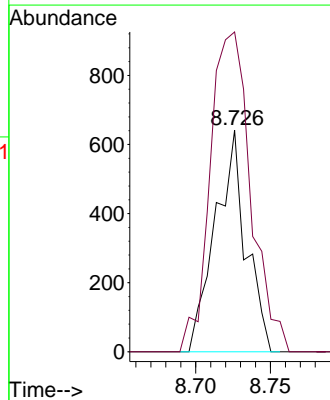
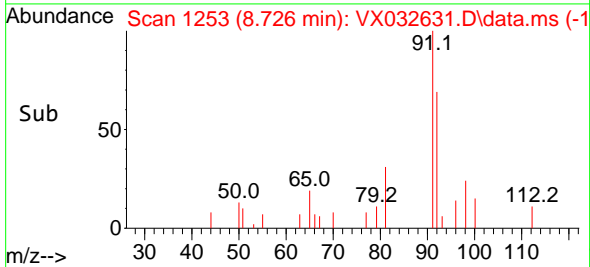
Supervised By :Mahesh Dadoda 11/08/2022

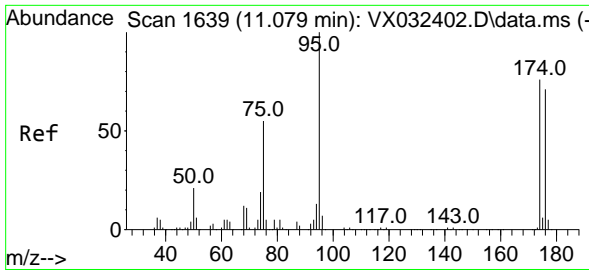


#52
 Toluene
 Concen: 0.274 ug/l
 RT: 8.726 min Scan# 1253
 Delta R.T. 0.006 min
 Lab File: VX032631.D
 Acq: 07 Nov 2022 16:48



Tgt Ion: 92 Resp: 917
 Ion Ratio Lower Upper
 92 100
 91 191.6 138.3 207.5





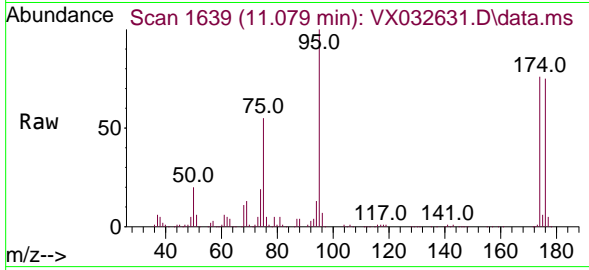
#62
 4-Bromofluorobenzene
 Concen: 49.087 ug/l
 RT: 11.079 min Scan# 1639
 Delta R.T. -0.000 min
 Lab File: VX032631.D
 Acq: 07 Nov 2022 16:48

Instrument :

MSVOA_X

Client SampleId :

DUP110422



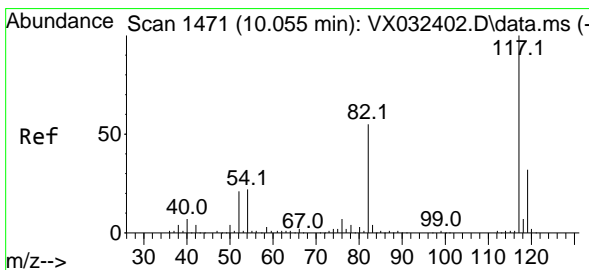
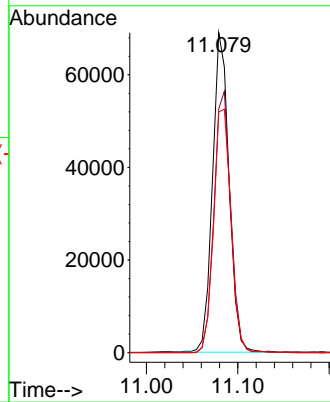
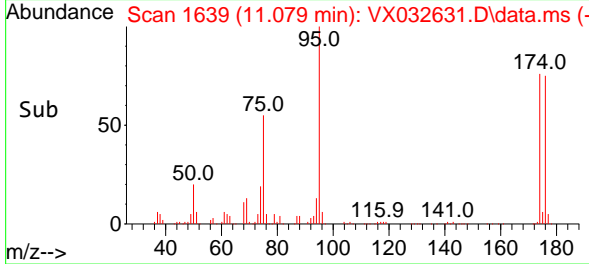
Tgt Ion: 95 Resp: 8687
 Ion Ratio Lower Upper
 95 100
 174 83.1 0.0 164.0
 176 79.9 0.0 154.4

Manual Integrations

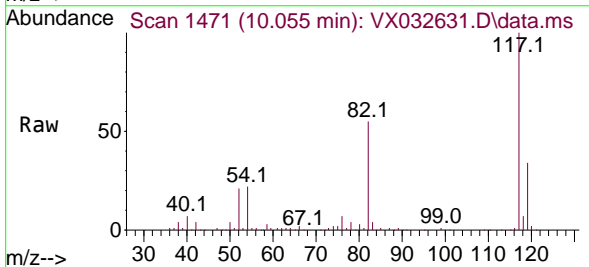
APPROVED

Reviewed By :John Carlone 11/08/2022

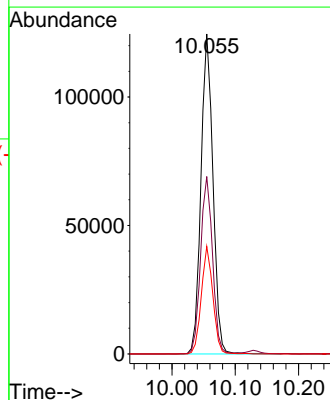
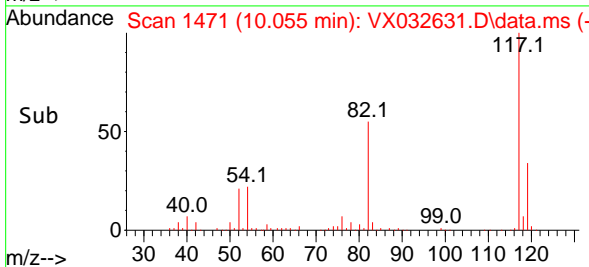
Supervised By :Mahesh Dadoda 11/08/2022

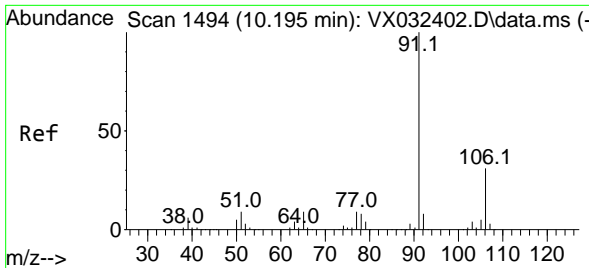


#63
 Chlorobenzene-d5
 Concen: 50.000 ug/l
 RT: 10.055 min Scan# 1471
 Delta R.T. -0.000 min
 Lab File: VX032631.D
 Acq: 07 Nov 2022 16:48



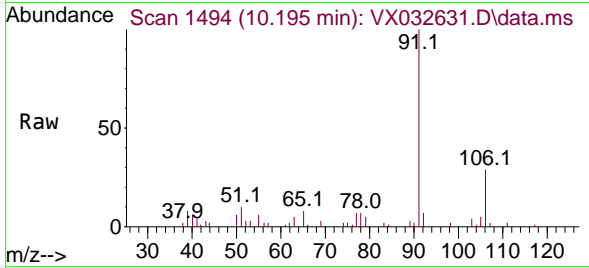
Tgt Ion:117 Resp: 162611
 Ion Ratio Lower Upper
 117 100
 82 55.3 44.3 66.5
 119 33.6 25.7 38.5





#67
 Ethyl Benzene
 Concen: 1.228 ug/l
 RT: 10.195 min Scan# 1494
 Delta R.T. -0.000 min
 Lab File: VX032631.D
 Acq: 07 Nov 2022 16:48

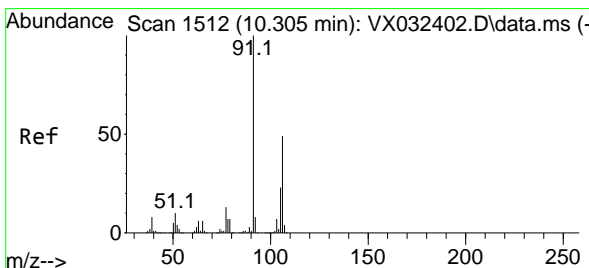
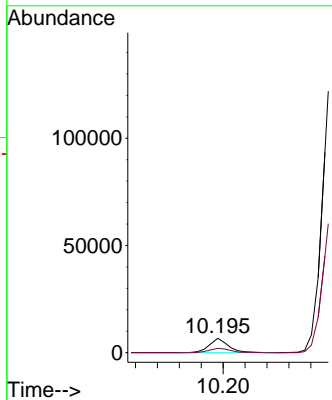
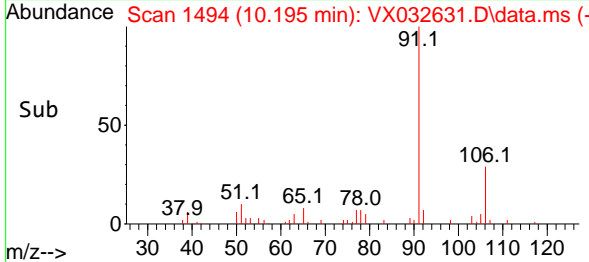
Instrument : MSVOA_X
 ClientSampleId : DUP110422



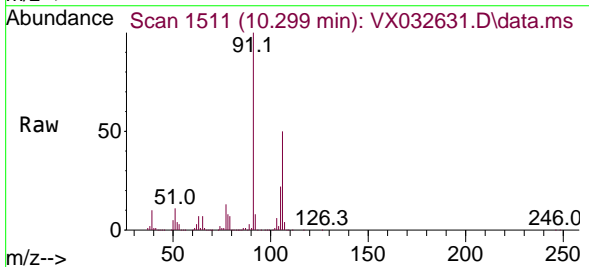
Tgt Ion: 91 Resp: 7996
 Ion Ratio Lower Upper
 91 100
 106 29.4 25.0 37.6

Manual Integrations
 APPROVED

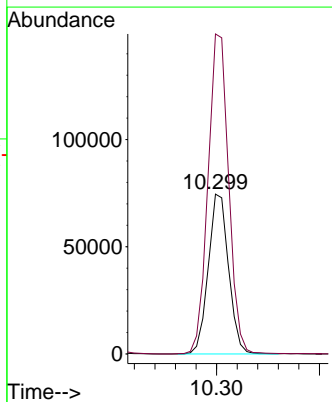
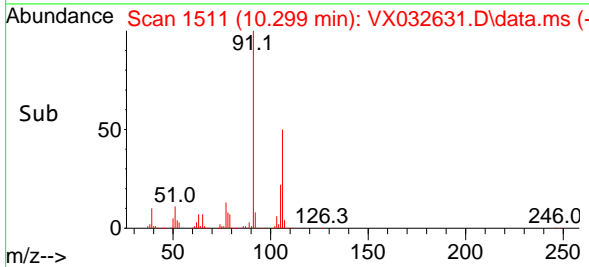
Reviewed By :John Carlone 11/08/2022
 Supervised By :Mahesh Dadoda 11/08/2022

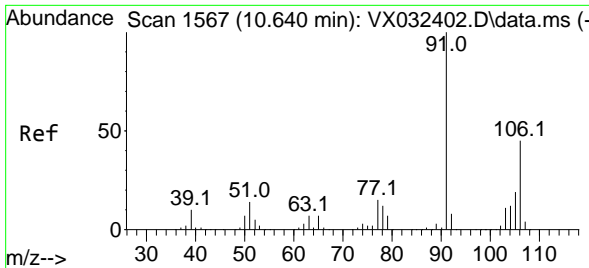


#68
 m/p-Xylenes
 Concen: 40.423 ug/l
 RT: 10.299 min Scan# 1511
 Delta R.T. -0.006 min
 Lab File: VX032631.D
 Acq: 07 Nov 2022 16:48



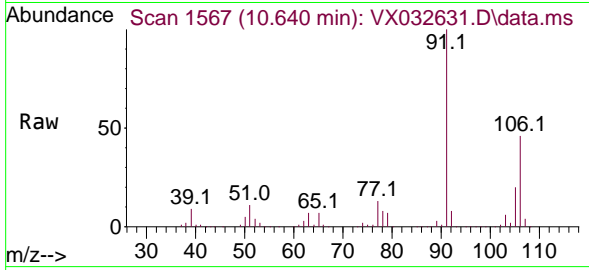
Tgt Ion:106 Resp: 102243
 Ion Ratio Lower Upper
 106 100
 91 204.1 164.5 246.7





#69
 o-Xylene
 Concen: 32.033 ug/l
 RT: 10.640 min Scan# 1567
 Delta R.T. -0.000 min
 Lab File: VX032631.D
 Acq: 07 Nov 2022 16:48

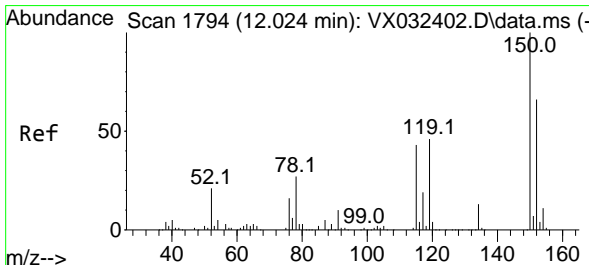
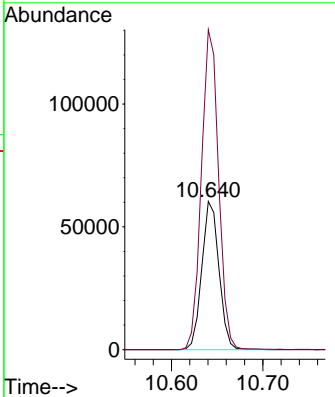
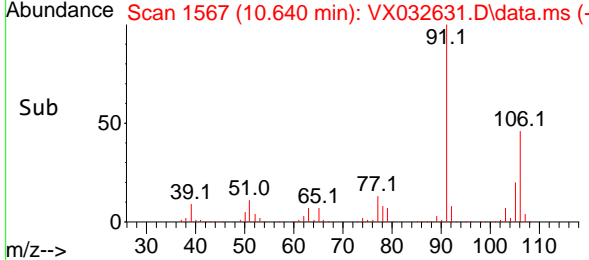
Instrument : MSVOA_X
 ClientSampleId : DUP110422



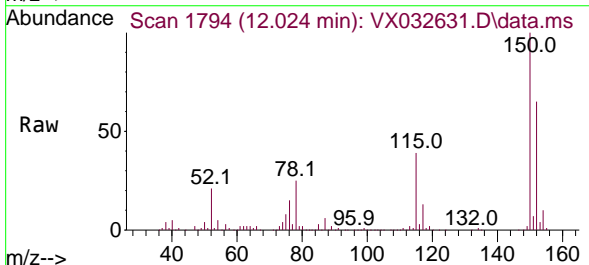
Tgt Ion:106 Resp: 78776
 Ion Ratio Lower Upper
 106 100
 91 216.6 109.2 327.6

Manual Integrations
APPROVED

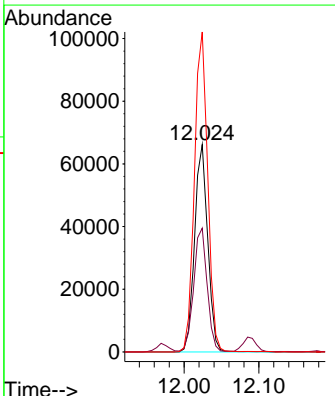
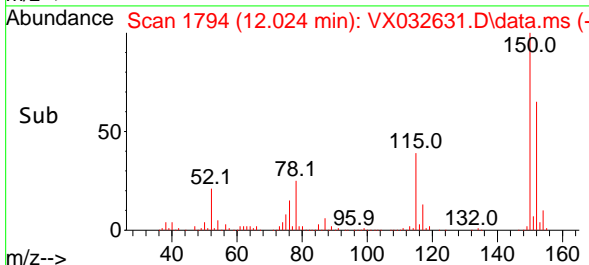
Reviewed By :John Carlone 11/08/2022
 Supervised By :Mahesh Dadoda 11/08/2022

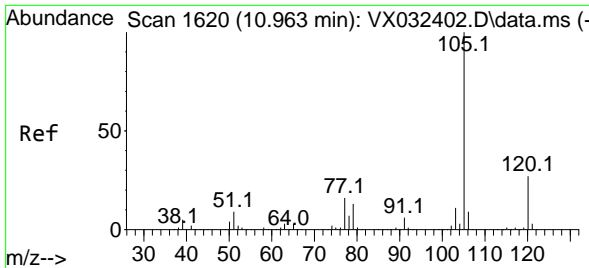


#72
 1,4-Dichlorobenzene-d4
 Concen: 50.000 ug/l
 RT: 12.024 min Scan# 1794
 Delta R.T. -0.000 min
 Lab File: VX032631.D
 Acq: 07 Nov 2022 16:48



Tgt Ion:152 Resp: 80803
 Ion Ratio Lower Upper
 152 100
 115 61.1 44.0 132.0
 150 155.4 0.0 351.8





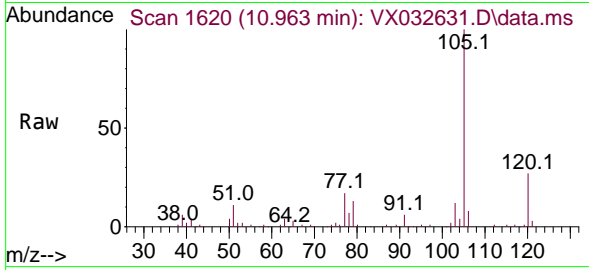
#73
 Isopropylbenzene
 Concen: 3.606 ug/l
 RT: 10.963 min Scan# 1620
 Delta R.T. -0.000 min
 Lab File: VX032631.D
 Acq: 07 Nov 2022 16:48

Instrument :

MSVOA_X

Client Sample Id :

DUP110422



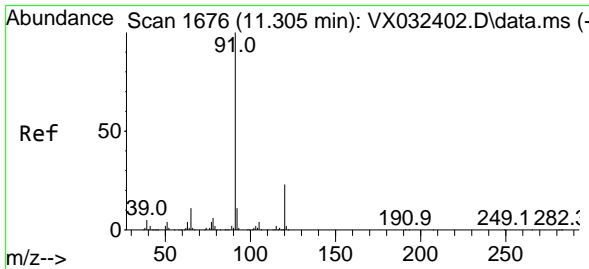
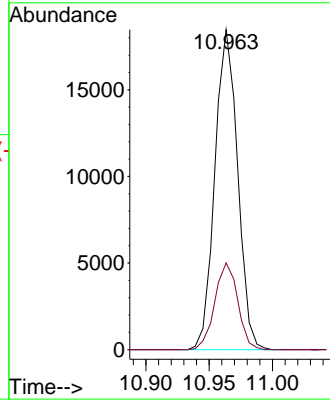
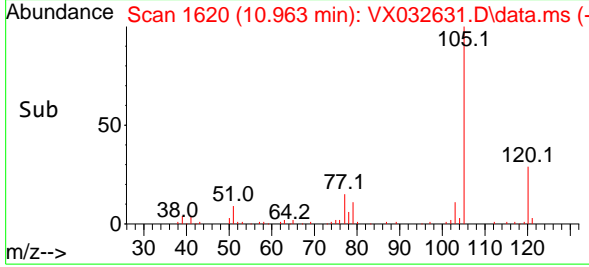
Tgt Ion: 105 Resp: 23092
 Ion Ratio Lower Upper
 105 100
 120 27.3 13.1 39.3

Manual Integrations

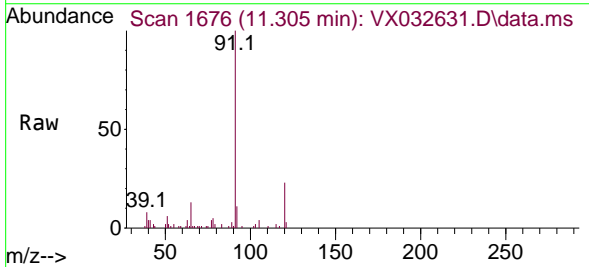
APPROVED

Reviewed By : John Carlone 11/08/2022

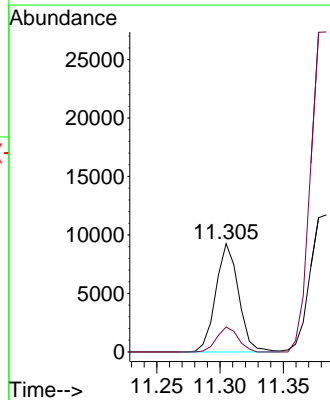
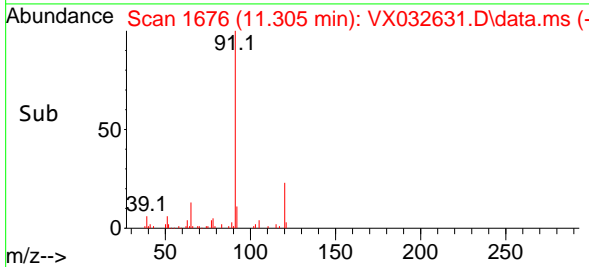
Supervised By : Mahesh Dadoda 11/08/2022

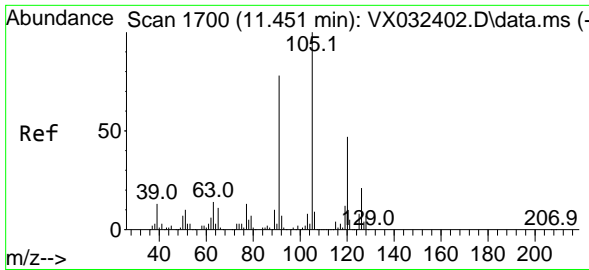


#78
 n-propylbenzene
 Concen: 1.575 ug/l
 RT: 11.305 min Scan# 1676
 Delta R.T. -0.000 min
 Lab File: VX032631.D
 Acq: 07 Nov 2022 16:48



Tgt Ion: 91 Resp: 11621
 Ion Ratio Lower Upper
 91 100
 120 0.0 11.6 34.8#





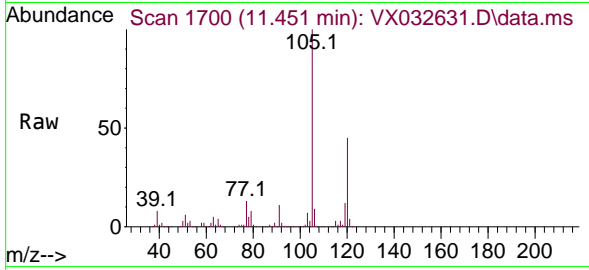
#80
 1,3,5-Trimethylbenzene
 Concen: 36.105 ug/l
 RT: 11.451 min Scan# 1700
 Delta R.T. -0.000 min
 Lab File: VX032631.D
 Acq: 07 Nov 2022 16:48

Instrument :

MSVOA_X

ClientSampleId :

DUP110422



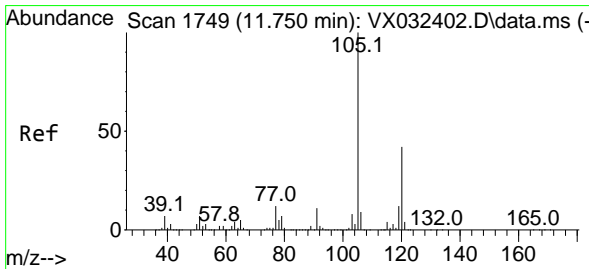
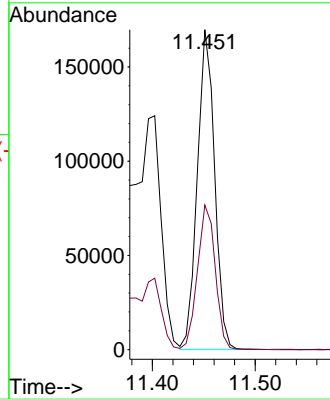
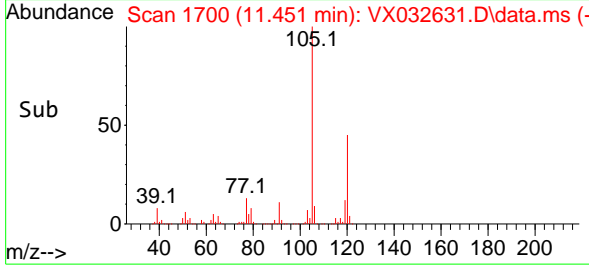
Tgt Ion:105 Resp: 197582
 Ion Ratio Lower Upper
 105 100
 120 46.6 23.6 71.0

Manual Integrations

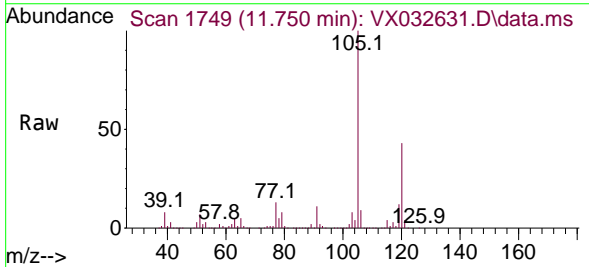
APPROVED

Reviewed By :John Carlone 11/08/2022

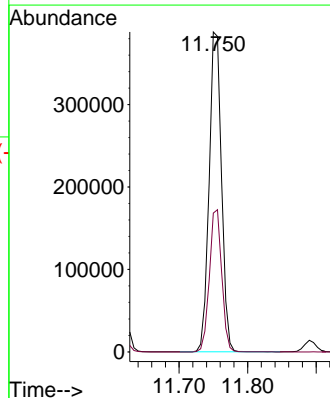
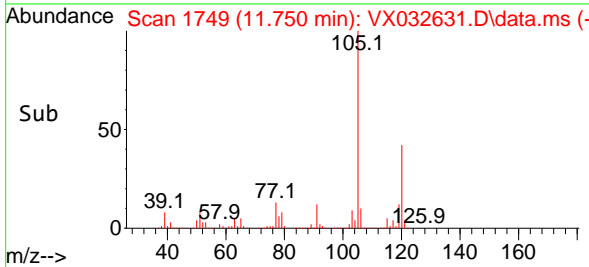
Supervised By :Mahesh Dadoda 11/08/2022

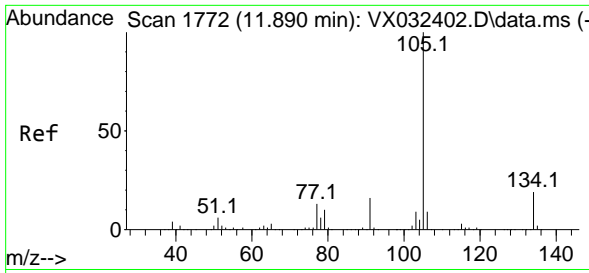


#84
 1,2,4-Trimethylbenzene
 Concen: 89.525 ug/l
 RT: 11.750 min Scan# 1749
 Delta R.T. -0.000 min
 Lab File: VX032631.D
 Acq: 07 Nov 2022 16:48



Tgt Ion:105 Resp: 487271
 Ion Ratio Lower Upper
 105 100
 120 44.2 21.9 65.5





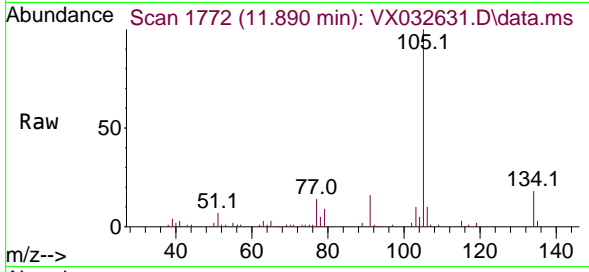
#85
 sec-Butylbenzene
 Concen: 2.595 ug/l
 RT: 11.890 min Scan# 1772
 Delta R.T. -0.000 min
 Lab File: VX032631.D
 Acq: 07 Nov 2022 16:48

Instrument :

MSVOA_X

ClientSampleId :

DUP110422



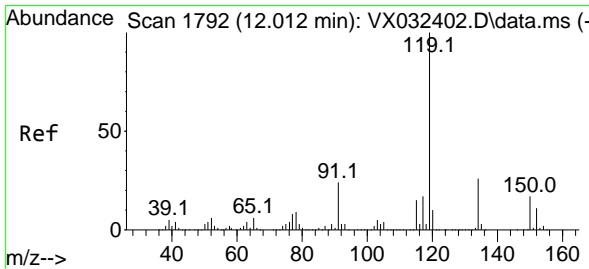
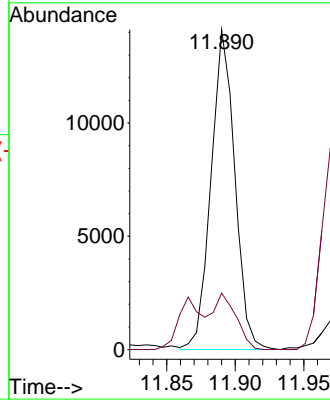
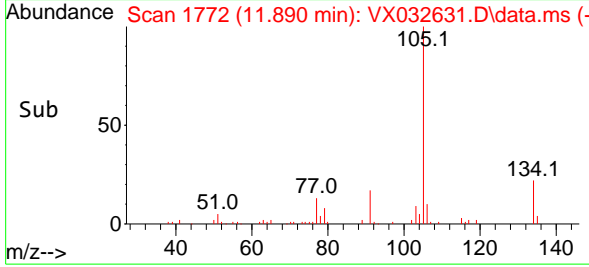
Tgt Ion:105 Resp: 17059
 Ion Ratio Lower Upper
 105 100
 134 16.9 9.9 29.7

Manual Integrations

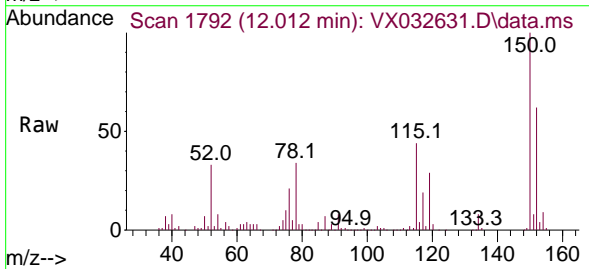
APPROVED

Reviewed By :John Carlone 11/08/2022

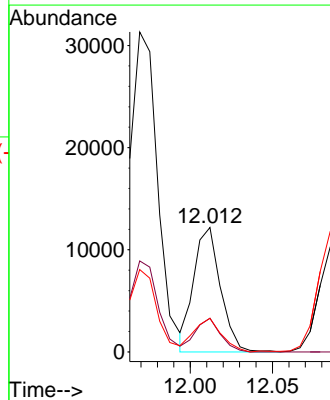
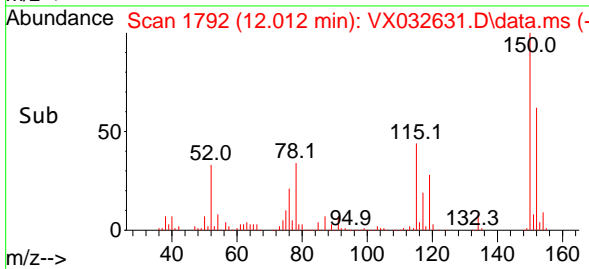
Supervised By :Mahesh Dadoda 11/08/2022

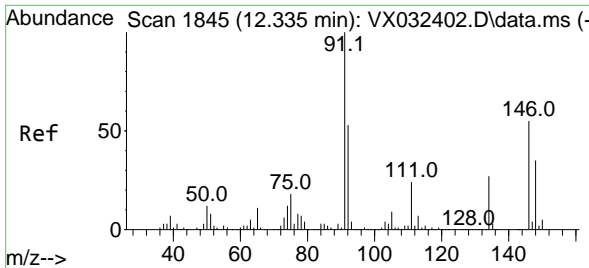


#86
 p-Isopropyltoluene
 Concen: 2.479 ug/l
 RT: 12.012 min Scan# 1792
 Delta R.T. -0.000 min
 Lab File: VX032631.D
 Acq: 07 Nov 2022 16:48



Tgt Ion:119 Resp: 13826
 Ion Ratio Lower Upper
 119 100
 134 25.6 12.9 38.7
 91 26.9 12.5 37.5





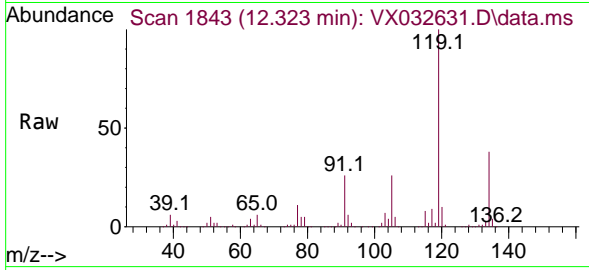
#89
 n-Butylbenzene
 Concen: 12.423 ug/l m
 RT: 12.323 min Scan# 1845
 Delta R.T. -0.012 min
 Lab File: VX032631.D
 Acq: 07 Nov 2022 16:48

Instrument :

MSVOA_X

ClientSampleId :

DUP110422



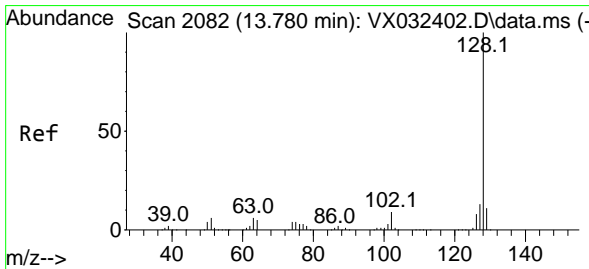
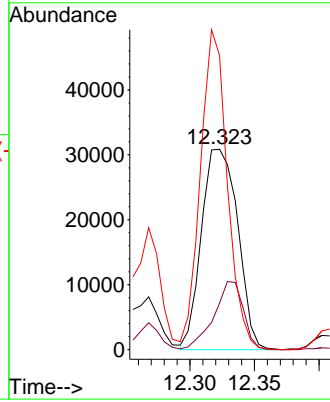
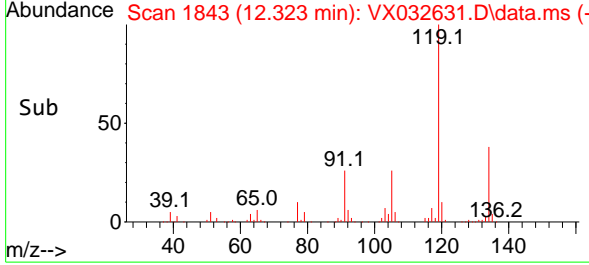
Tgt Ion: 91 Resp: 60289
 Ion Ratio Lower Upper
 91 100
 92 27.7 26.2 78.6
 134 118.5 12.9 38.6

Manual Integrations

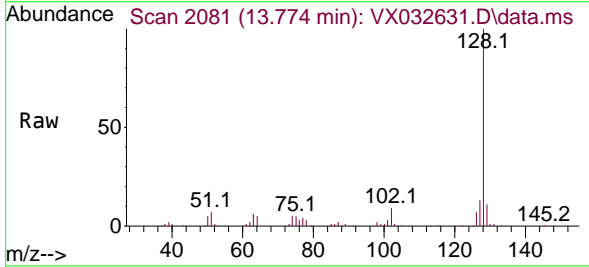
APPROVED

Reviewed By :John Carlone 11/08/2022

Supervised By :Mahesh Dadoda 11/08/2022



#95
 Naphthalene
 Concen: 10.704 ug/l
 RT: 13.774 min Scan# 2081
 Delta R.T. -0.006 min
 Lab File: VX032631.D
 Acq: 07 Nov 2022 16:48



Tgt Ion:128 Resp: 67902
 Ion Ratio Lower Upper
 128 100
 127 13.4 10.2 15.4
 129 12.3 8.9 13.3

