

Data Path : Z:\voasrv\HPCHEM1\MSVOA_X\Data\VX110821\
 Data File : VX025090.D
 Acq On : 08 Nov 2021 10:13
 Operator : JC/MD
 Sample : VSTD05026
 Misc : 5.0mL/MSVOA_X/WATER
 ALS Vial : 4 Sample Multiplier: 1

Instrument :
 MSVOA_X
 ClientSampleId :
 VSTD050626

Quant Time: Nov 09 03:36:20 2021
 Quant Method : Z:\voasrv\HPCHEM1\MSVOA_X\Method\SFAMXML110821WMA.M
 Quant Title : VOC Analysis
 QLast Update : Tue Nov 09 03:33:09 2021
 Response via : Initial Calibration

Compound	R.T.	QIon	Response	Conc	Units	Dev(Min)
Internal Standards						
1) 1,4-Difluorobenzene	6.769	114	221800	50.000	ug/L	0.00
28) Chlorobenzene-d5	10.055	117	169365	50.000	ug/L	0.00
58) 1,4-Dichlorobenzene-d4	12.024	152	76246	50.000	ug/L	0.00
System Monitoring Compounds						
4) Vinyl Chloride-d3	1.368	65	100442	66.548	ug/L	0.00
7) Chloroethane-d5	1.672	69	68686	66.408	ug/L	0.00
11) 1,1-Dichloroethene-d2	2.313	63	185458	52.984	ug/L	0.00
21) 2-Butanone-d5	4.459	46	136700	98.529	ug/L	0.00
24) Chloroform-d	5.062	84	196820	53.150	ug/L	0.00
26) 1,2-Dichloroethane-d4	5.958	65	128641	48.161	ug/L	0.00
32) Benzene-d6	5.977	84	329925	64.524	ug/L	0.00
36) 1,2-Dichloropropane-d6	7.312	67	82193	50.862	ug/L	0.00
41) Toluene-d8	8.653	98	236382	51.567	ug/L	0.00
43) trans-1,3-Dichloroprop...	8.952	79	50011	53.401	ug/L	0.00
47) 2-Hexanone-d5	9.525	63	38	0.046	ug/L	0.14
56) 1,1,2,2-Tetrachloroeth...	11.195	84	104647	48.575	ug/L	0.00
66) 1,2-Dichlorobenzene-d4	12.323	152	77491	52.639	ug/L	0.00
Target Compounds						
2) Dichlorodifluoromethane	1.166	85	107868	51.666	ug/L	100
3) Chloromethane	1.295	50	75697	52.052	ug/L	94
5) Vinyl chloride	1.374	62	94937	56.842	ug/L	97
6) Bromomethane	1.618	94	60289	56.102	ug/L	94
8) Chloroethane	1.691	64	58061	66.388	ug/L	97
9) Trichlorofluoromethane	1.892	101	176826	49.572	ug/L	99
10) 1,1,2-Trichloro-1,2,2-...	2.331	101	85339	52.047	ug/L	93
12) 1,1-Dichloroethene	2.325	96	76111	54.207	ug/L	86
13) Acetone	2.386	43	130739	98.394	ug/L	96
14) Carbon disulfide	2.514	76	194460	51.908	ug/L	99
15) Methyl Acetate	2.709	43	89557	47.111	ug/L #	79
16) Methylene chloride	2.794	84	84570	53.084	ug/L	84
17) trans-1,2-Dichloroethene	3.093	96	75848	53.309	ug/L	90
18) Methyl tert-butyl Ether	3.117	73	299078	51.418	ug/L #	92
19) 1,1-Dichloroethane	3.611	63	162482	49.862	ug/L	92
20) cis-1,2-Dichloroethene	4.495	96	88657	54.569	ug/L	88
22) 2-Butanone	4.562	43	156790	96.470	ug/L	83
23) Bromochloromethane	4.910	128	42298	53.035	ug/L #	69
25) Chloroform	5.099	83	180742	49.821	ug/L	99
27) 1,2-Dichloroethane	6.092	62	144391	45.982	ug/L	99
29) Cyclohexane	5.477	56	138761	58.767	ug/L #	81
30) 1,1,1-Trichloroethane	5.391	97	162238	54.742	ug/L #	93
31) Carbon tetrachloride	5.678	117	135545	54.172	ug/L	99
33) Benzene	6.044	78	336515	61.219	ug/L	100
34) Trichloroethene	7.129	95	77120	49.398	ug/L	99
35) Methylcyclohexane	7.385	83	110011	49.114	ug/L #	87
37) 1,2-Dichloropropane	7.440	63	74768	50.777	ug/L	98
38) Bromodichloromethane	7.824	83	120172	52.706	ug/L #	96
39) cis-1,3-Dichloropropene	8.373	75	110676	46.987	ug/L	94
40) 4-Methyl-2-pentanone	8.574	43	225302	99.622	ug/L #	78
42) Toluene	8.720	91	285356	50.383	ug/L	99
44) trans-1,3-Dichloropropene	8.982	75	130119	52.616	ug/L	98

Data Path : Z:\voasrv\HPCHEM1\MSVOA_X\Data\VX110821\
 Data File : VX025090.D
 Acq On : 08 Nov 2021 10:13
 Operator : JC/MD
 Sample : VSTD05026
 Misc : 5.0mL/MSVOA_X/WATER
 ALS Vial : 4 Sample Multiplier: 1

Instrument :
 MSVOA_X
 ClientSampleId :
 VSTD050626

Quant Time: Nov 09 03:36:20 2021
 Quant Method : Z:\voasrv\HPCHEM1\MSVOA_X\Method\SFAMXML110821WMA.M
 Quant Title : VOC Analysis
 QLast Update : Tue Nov 09 03:33:09 2021
 Response via : Initial Calibration

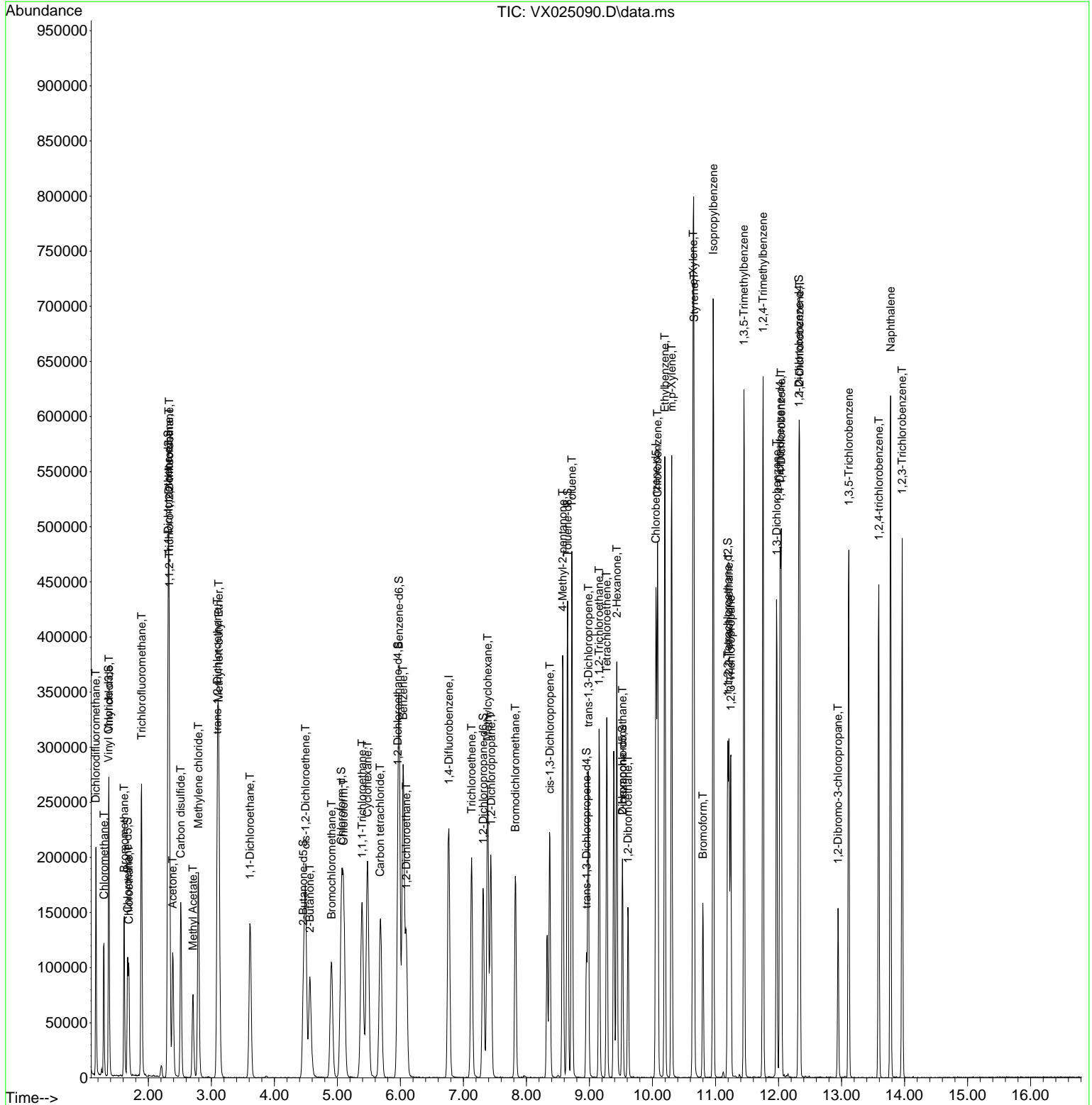
Compound	R.T.	QIon	Response	Conc	Units	Dev(Min)
45) 1,1,2-Trichloroethane	9.153	97	76232	53.963	ug/L	93
46) Tetrachloroethene	9.275	164	49994	51.117	ug/L	95
48) 2-Hexanone	9.433	43	200027	105.079	ug/L #	78
49) Dibromochloromethane	9.525	129	80674	51.929	ug/L	96
50) 1,2-Dibromoethane	9.610	107	80391	52.202	ug/L #	96
51) Chlorobenzene	10.079	112	181785	52.744	ug/L	94
52) Ethylbenzene	10.195	91	316491	48.904	ug/L	99
53) m,p-Xylene	10.305	106	114072	50.734	ug/L	99
54) o-Xylene	10.646	106	106203	48.706	ug/L	97
55) Styrene	10.659	104	186922	50.429	ug/L	98
57) 1,1,2,2-Tetrachloroethane	11.213	83	104307	47.725	ug/L	94
59) Bromoform	10.799	173	49828	53.415	ug/L #	98
60) Isopropylbenzene	10.964	105	351106	58.968	ug/L	98
61) 1,2,3-Trichloropropane	11.244	75	91388	49.772	ug/L	91
62) 1,3,5-Trimethylbenzene	11.451	105	259721	52.251	ug/L	100
63) 1,2,4-Trimethylbenzene	11.756	105	267550	53.270	ug/L	98
64) 1,3-Dichlorobenzene	11.969	146	115875	51.722	ug/L	95
65) 1,4-Dichlorobenzene	12.043	146	114957	49.827	ug/L	96
67) 1,2-Dichlorobenzene	12.335	146	121677	53.000	ug/L	95
68) 1,2-Dibromo-3-chloropr...	12.945	75	32300	53.362	ug/L #	86
69) 1,3,5-Trichlorobenzene	13.116	180	96442	58.129	ug/L	98
70) 1,2,4-trichlorobenzene	13.591	180	94339	65.108	ug/L	98
71) Naphthalene	13.780	128	365910	71.645	ug/L	98
72) 1,2,3-Trichlorobenzene	13.963	180	97197	65.300	ug/L	96

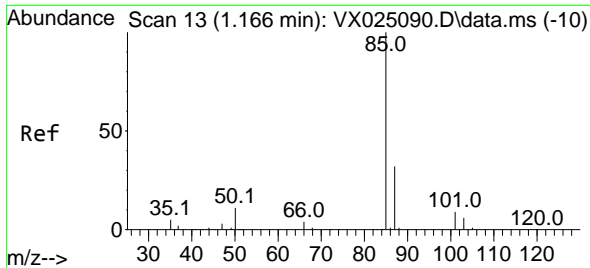
(#) = qualifier out of range (m) = manual integration (+) = signals summed

Data Path : Z:\voasrv\HPCHEM1\MSVOA_X\Data\VX110821\
 Data File : VX025090.D
 Acq On : 08 Nov 2021 10:13
 Operator : JC/MD
 Sample : VSTD05026
 Misc : 5.0mL/MSVOA_X/WATER
 ALS Vial : 4 Sample Multiplier: 1

Instrument :
 MSVOA_X
 ClientSampleId :
 VSTD050626

Quant Time: Nov 09 03:36:20 2021
 Quant Method : Z:\voasrv\HPCHEM1\MSVOA_X\Method\SFAMXLM110821WMA.M
 Quant Title : VOC Analysis
 QLast Update : Tue Nov 09 03:33:09 2021
 Response via : Initial Calibration

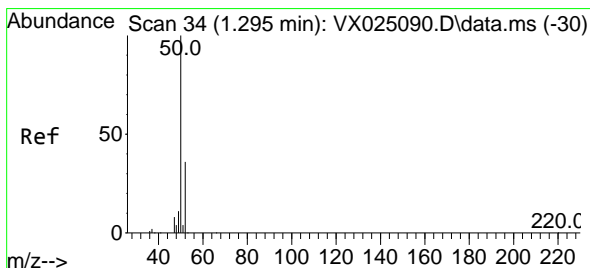
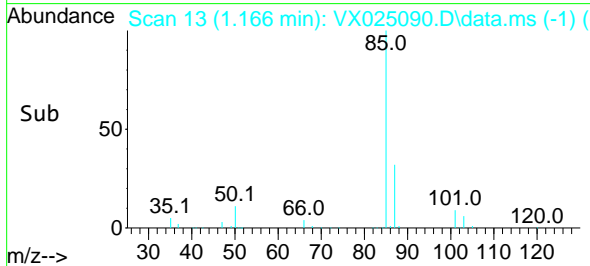
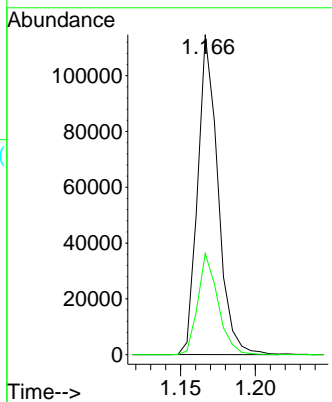
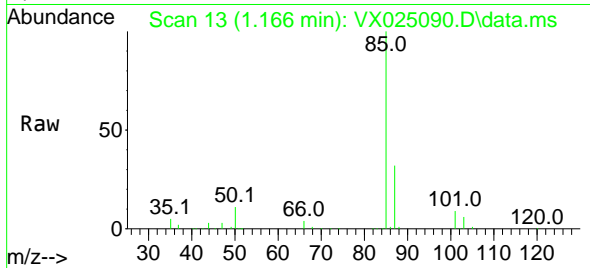




#2
 Dichlorodifluoromethane
 Concen: 51.666 ug/L
 RT: 1.166 min Scan# 11
 Delta R.T. 0.000 min
 Lab File: VX025090.D
 Acq: 08 Nov 2021 10:13

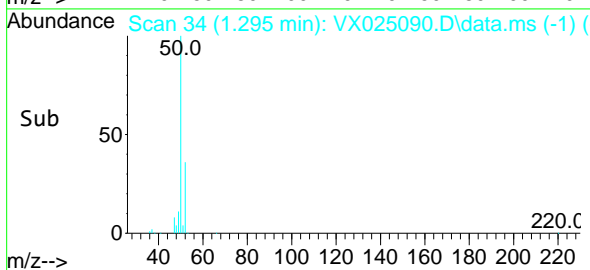
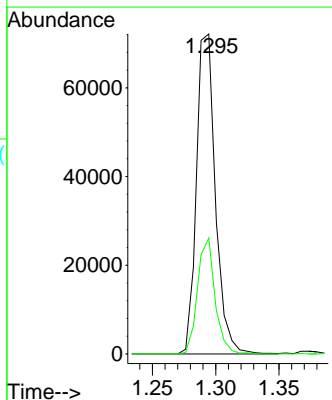
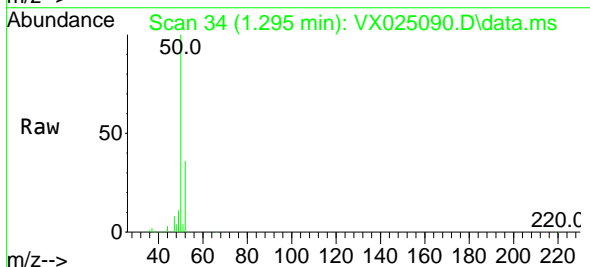
Instrument :
 MSVOA_X
 ClientSampleId :
 VSTD050626

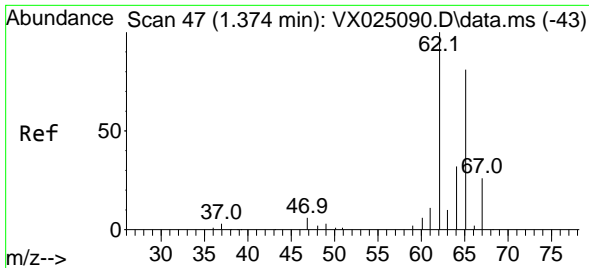
Tgt Ion: 85 Resp: 107868
 Ion Ratio Lower Upper
 85 100
 87 31.5 25.3 37.9



#3
 Chloromethane
 Concen: 52.052 ug/L
 RT: 1.295 min Scan# 34
 Delta R.T. 0.000 min
 Lab File: VX025090.D
 Acq: 08 Nov 2021 10:13

Tgt Ion: 50 Resp: 75697
 Ion Ratio Lower Upper
 50 100
 52 36.2 28.0 52.0

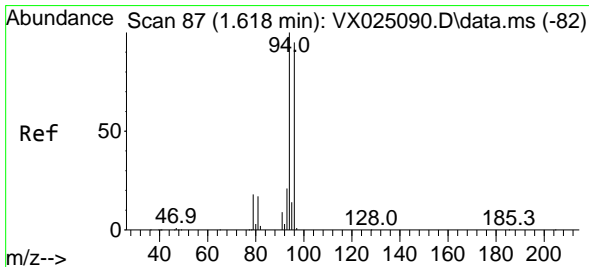
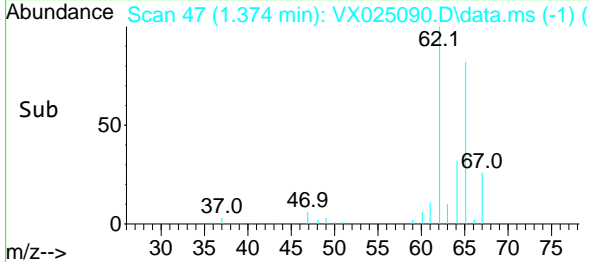
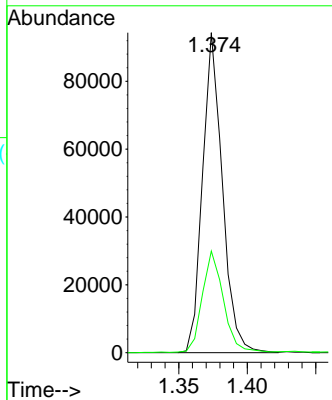
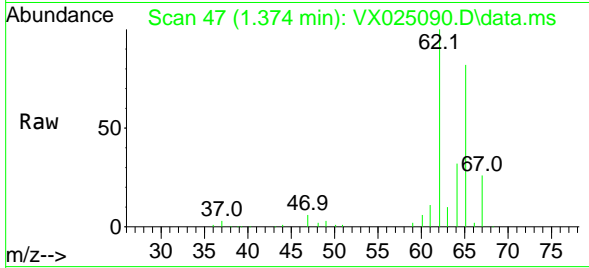




#5
 Vinyl chloride
 Concen: 56.842 ug/L
 RT: 1.374 min Scan# 41
 Delta R.T. 0.000 min
 Lab File: VX025090.D
 Acq: 08 Nov 2021 10:13

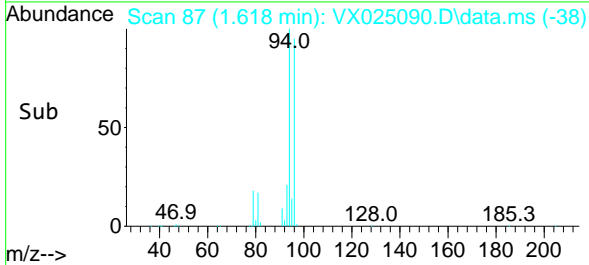
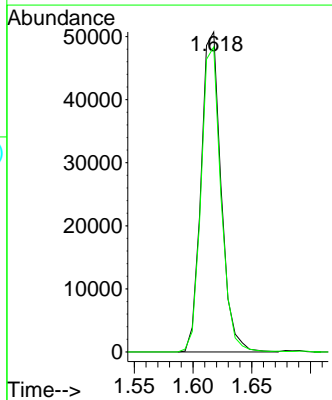
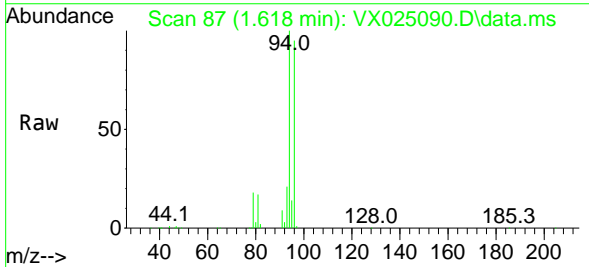
Instrument :
 MSVOA_X
 ClientSampleId :
 VSTD050626

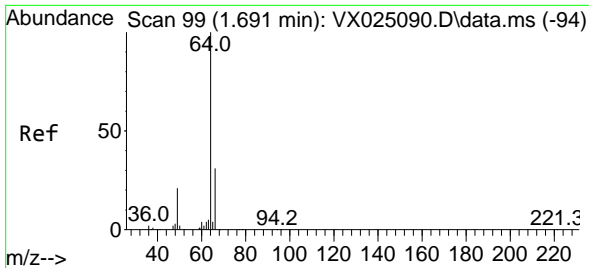
Tgt Ion: 62 Resp: 94937
 Ion Ratio Lower Upper
 62 100
 64 31.7 23.6 43.8



#6
 Bromomethane
 Concen: 56.102 ug/L
 RT: 1.618 min Scan# 87
 Delta R.T. -0.000 min
 Lab File: VX025090.D
 Acq: 08 Nov 2021 10:13

Tgt Ion: 94 Resp: 60289
 Ion Ratio Lower Upper
 94 100
 96 95.3 62.9 116.9

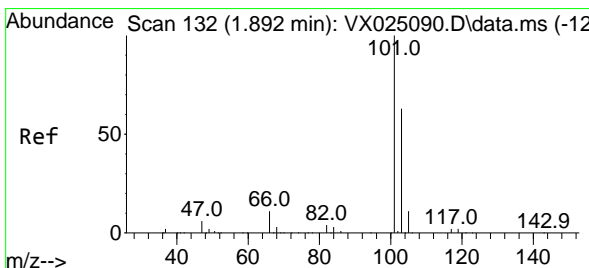
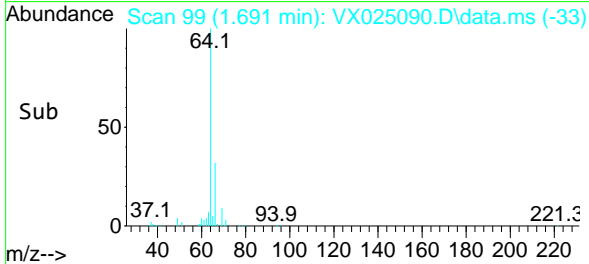
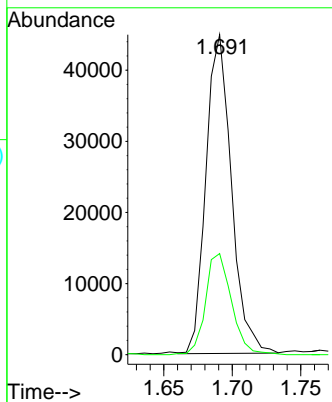
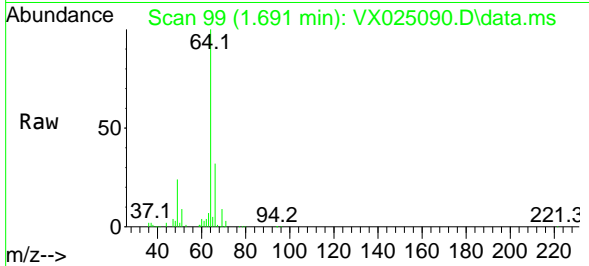




#8
 Chloroethane
 Concen: 66.388 ug/L
 RT: 1.691 min Scan# 99
 Delta R.T. 0.000 min
 Lab File: VX025090.D
 Acq: 08 Nov 2021 10:13

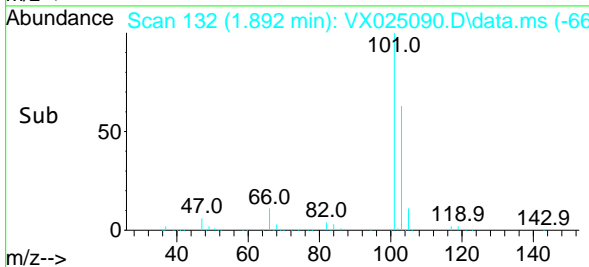
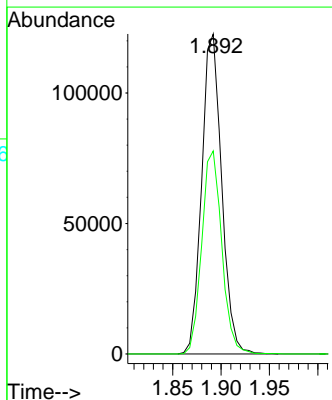
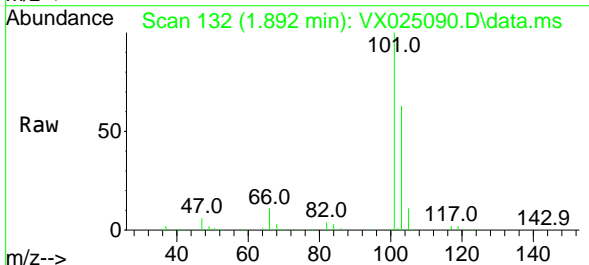
Instrument :
 MSVOA_X
 ClientSampleId :
 VSTD050626

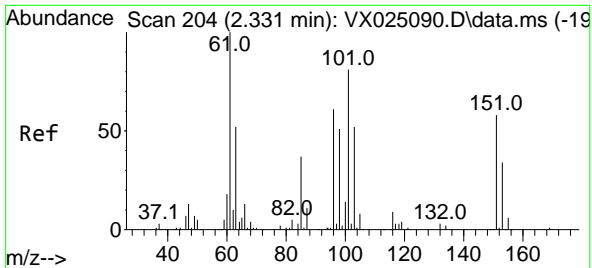
Tgt Ion: 64 Resp: 58061
 Ion Ratio Lower Upper
 64 100
 66 31.6 23.3 43.3



#9
 Trichlorofluoromethane
 Concen: 49.572 ug/L
 RT: 1.892 min Scan# 132
 Delta R.T. 0.000 min
 Lab File: VX025090.D
 Acq: 08 Nov 2021 10:13

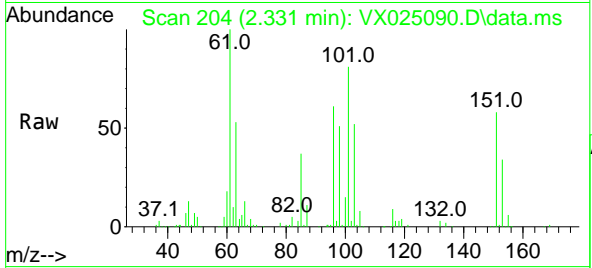
Tgt Ion: 101 Resp: 176826
 Ion Ratio Lower Upper
 101 100
 103 63.5 51.4 77.0



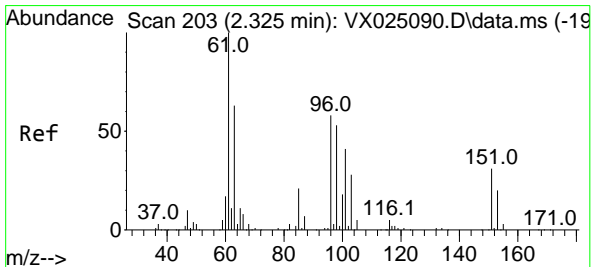
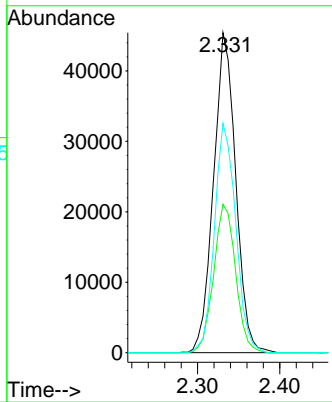
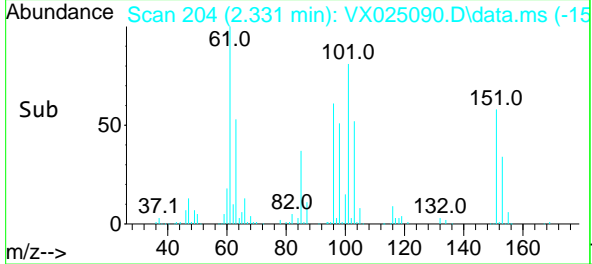


#10
 1,1,2-Trichloro-1,2,2-trifluoroethane
 Concen: 52.047 ug/L
 RT: 2.331 min Scan# 204
 Delta R.T. 0.000 min
 Lab File: VX025090.D
 Acq: 08 Nov 2021 10:13

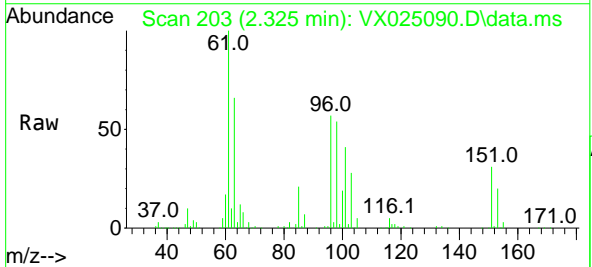
Instrument :
 MSVOA_X
 ClientSampleId :
 VSTD050626



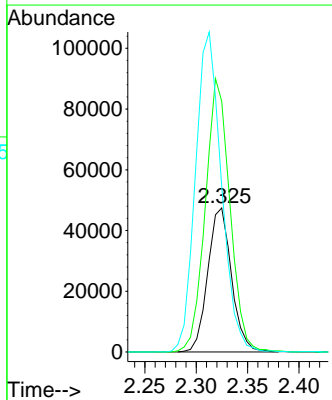
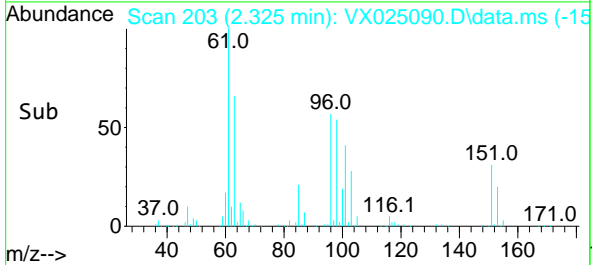
Tgt Ion:101 Resp: 85339
 Ion Ratio Lower Upper
 101 100
 85 45.8 35.3 52.9
 151 69.1 62.3 93.5

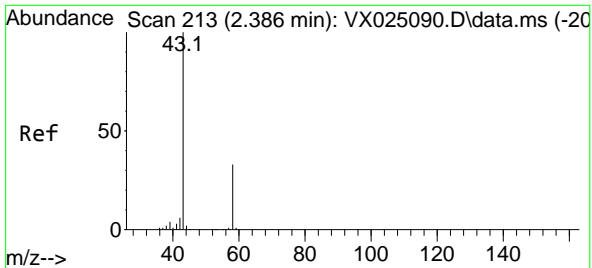


#12
 1,1-Dichloroethene
 Concen: 54.207 ug/L
 RT: 2.325 min Scan# 203
 Delta R.T. 0.000 min
 Lab File: VX025090.D
 Acq: 08 Nov 2021 10:13



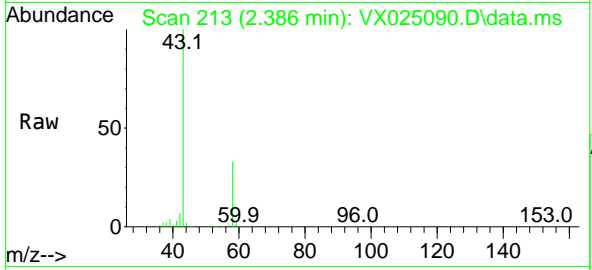
Tgt Ion: 96 Resp: 76111
 Ion Ratio Lower Upper
 96 100
 61 174.2 109.9 204.1
 63 115.0 92.4 171.6



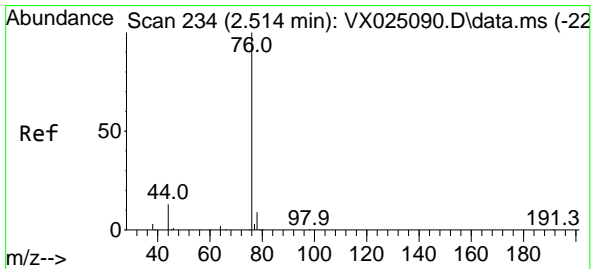
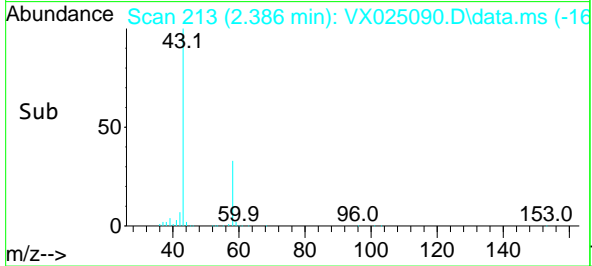
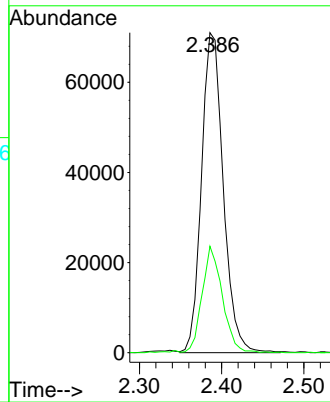


#13
 Acetone
 Concen: 98.394 ug/L
 RT: 2.386 min Scan# 213
 Delta R.T. 0.000 min
 Lab File: VX025090.D
 Acq: 08 Nov 2021 10:13

Instrument : MSVOA_X
 ClientSampleId : VSTD050626

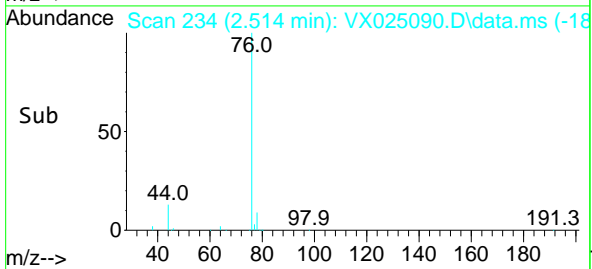
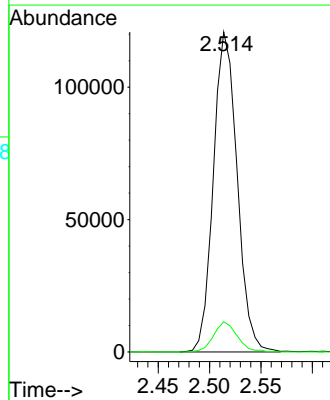
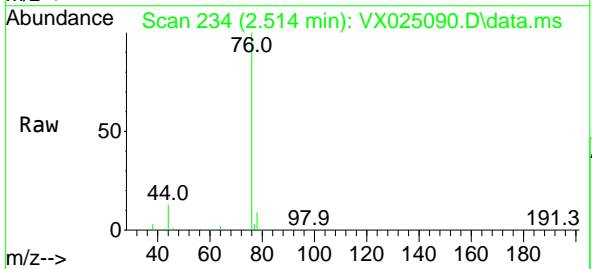


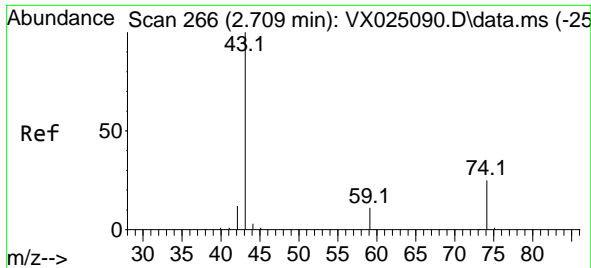
Tgt Ion: 43 Resp: 130739
 Ion Ratio Lower Upper
 43 100
 58 30.2 0.0 64.8



#14
 Carbon disulfide
 Concen: 51.908 ug/L
 RT: 2.514 min Scan# 234
 Delta R.T. 0.000 min
 Lab File: VX025090.D
 Acq: 08 Nov 2021 10:13

Tgt Ion: 76 Resp: 194460
 Ion Ratio Lower Upper
 76 100
 78 9.4 7.2 10.8

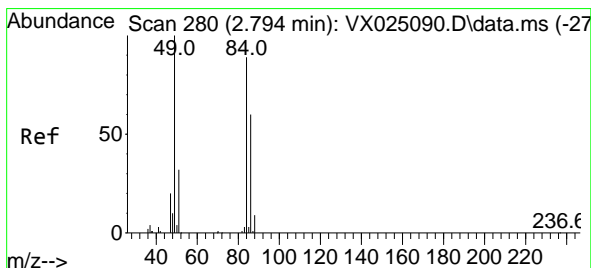
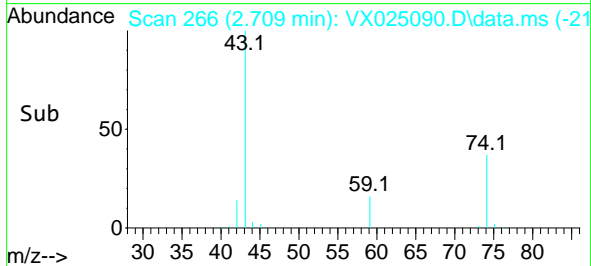
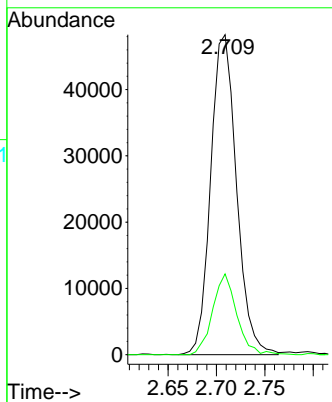
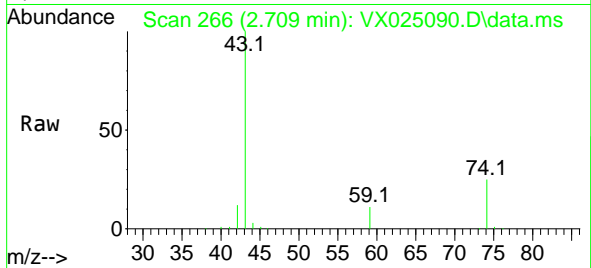




#15
 Methyl Acetate
 Concen: 47.111 ug/L
 RT: 2.709 min Scan# 20
 Delta R.T. 0.000 min
 Lab File: VX025090.D
 Acq: 08 Nov 2021 10:13

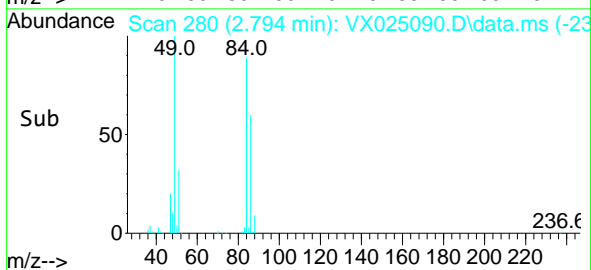
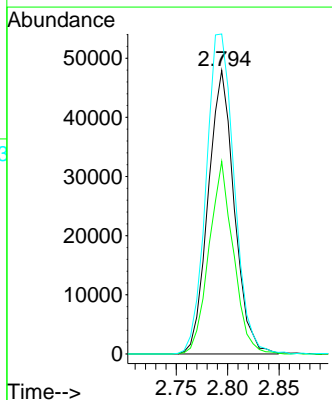
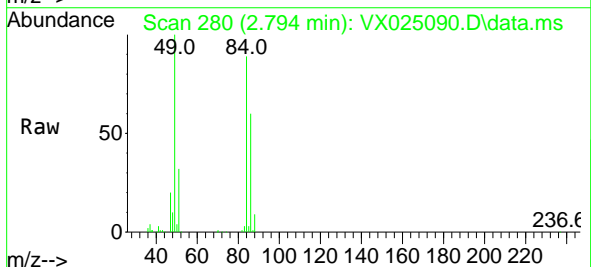
Instrument :
 MSVOA_X
 ClientSampleId :
 VSTD050626

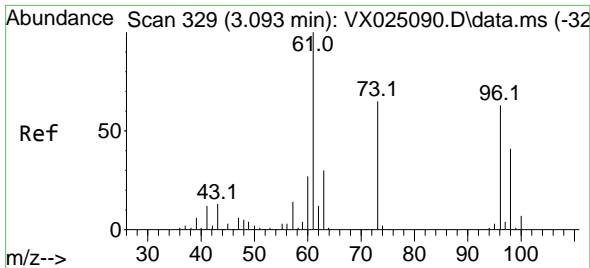
Tgt Ion: 43 Resp: 89557
 Ion Ratio Lower Upper
 43 100
 74 23.1 28.6 42.8#



#16
 Methylene chloride
 Concen: 53.084 ug/L
 RT: 2.794 min Scan# 280
 Delta R.T. 0.000 min
 Lab File: VX025090.D
 Acq: 08 Nov 2021 10:13

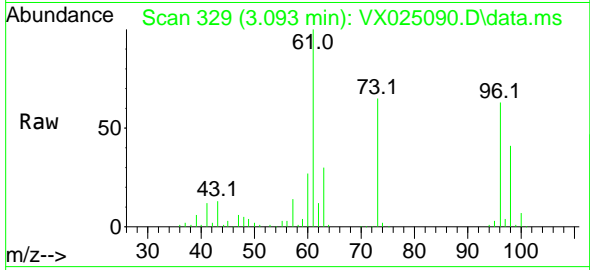
Tgt Ion: 84 Resp: 84570
 Ion Ratio Lower Upper
 84 100
 86 67.9 44.4 82.5
 49 112.9 64.0 118.8



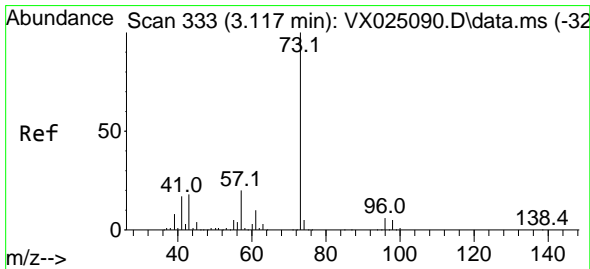
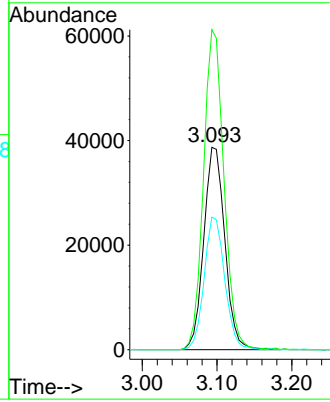
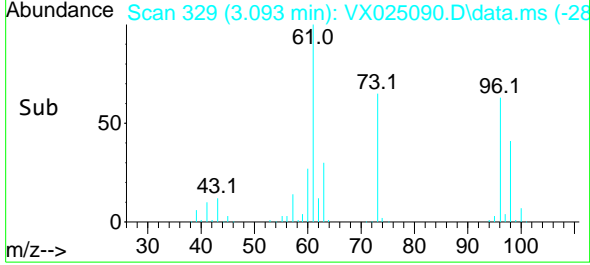


#17
 trans-1,2-Dichloroethene
 Concen: 53.309 ug/L
 RT: 3.093 min Scan# 317
 Delta R.T. 0.000 min
 Lab File: VX025090.D
 Acq: 08 Nov 2021 10:13

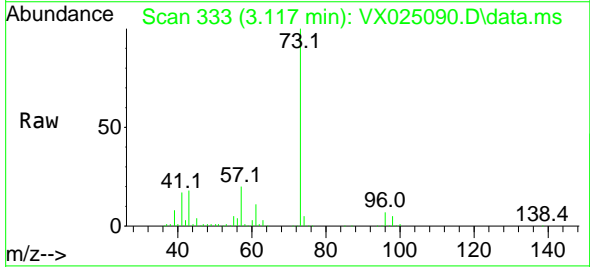
Instrument : MSVOA_X
 ClientSampleId : VSTD050626



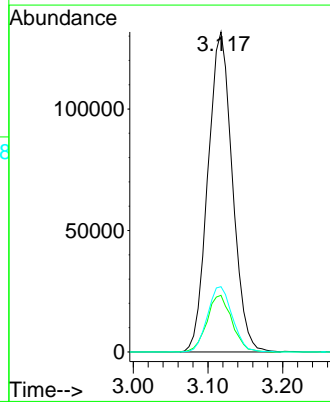
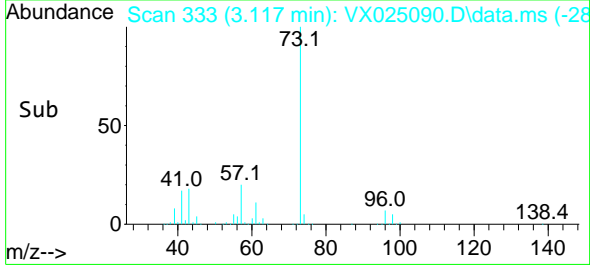
Tgt Ion: 96 Resp: 75848
 Ion Ratio Lower Upper
 96 100
 61 158.0 99.4 184.6
 98 65.5 47.0 87.2

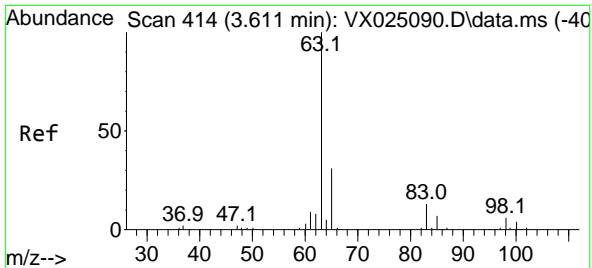


#18
 Methyl tert-butyl Ether
 Concen: 51.418 ug/L
 RT: 3.117 min Scan# 333
 Delta R.T. 0.000 min
 Lab File: VX025090.D
 Acq: 08 Nov 2021 10:13



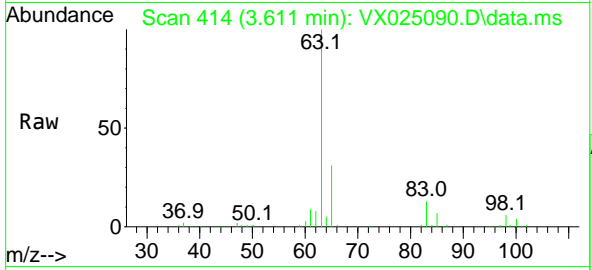
Tgt Ion: 73 Resp: 299078
 Ion Ratio Lower Upper
 73 100
 43 18.2 12.4 18.6
 57 20.7 13.2 19.8





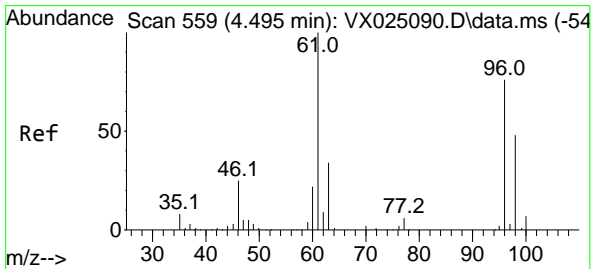
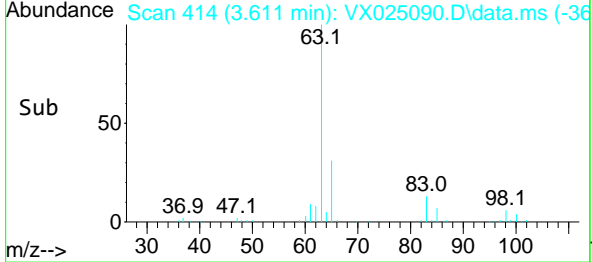
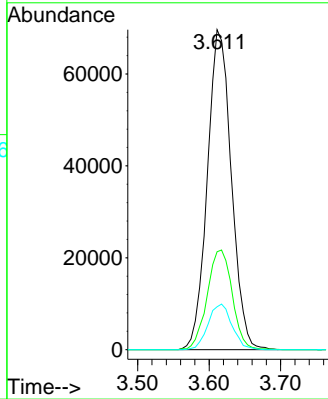
#19
 1,1-Dichloroethane
 Concen: 49.862 ug/L
 RT: 3.611 min Scan# 411
 Delta R.T. 0.000 min
 Lab File: VX025090.D
 Acq: 08 Nov 2021 10:13

Instrument : MSVOA_X
 ClientSampleId : VSTD050626



Tgt Ion: 63 Resp: 162482

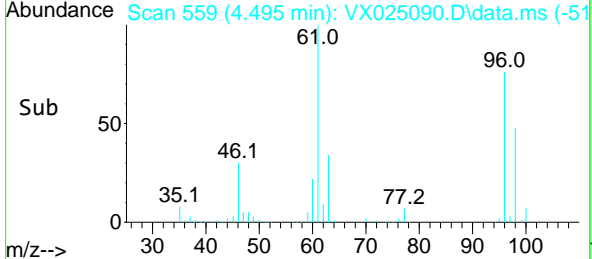
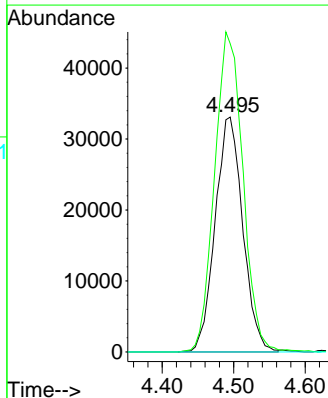
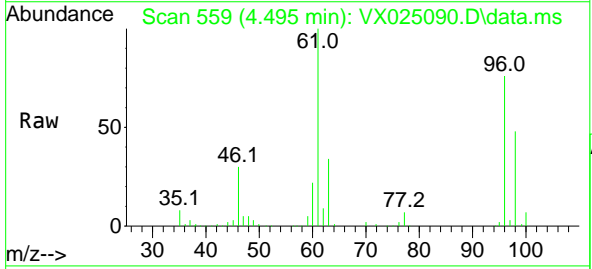
Ion	Ratio	Lower	Upper
63	100		
65	30.6	24.5	45.5
83	13.4	11.7	21.7

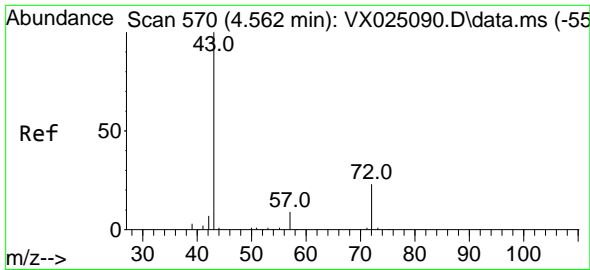


#20
 cis-1,2-Dichloroethene
 Concen: 54.569 ug/L
 RT: 4.495 min Scan# 559
 Delta R.T. 0.000 min
 Lab File: VX025090.D
 Acq: 08 Nov 2021 10:13

Tgt Ion: 96 Resp: 88657

Ion	Ratio	Lower	Upper
96	100		
61	131.3	82.6	153.4
68	0.0	0.0	0.0

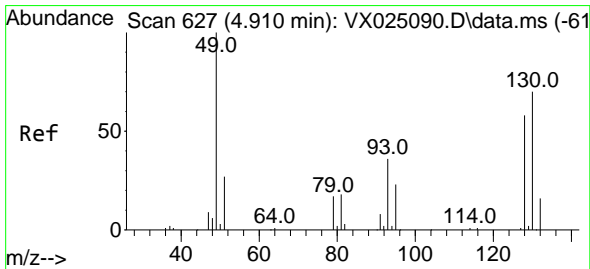
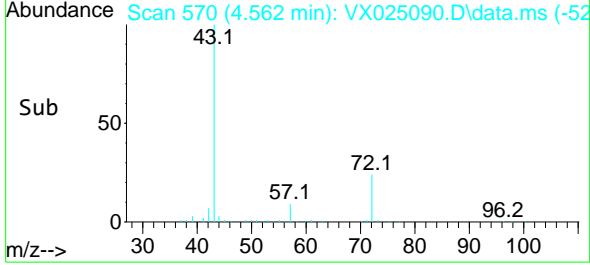
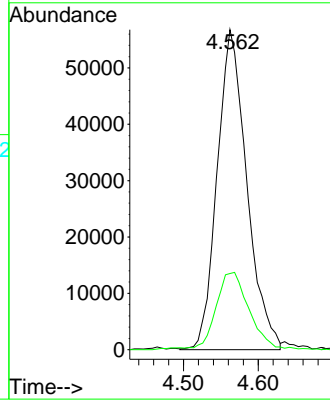
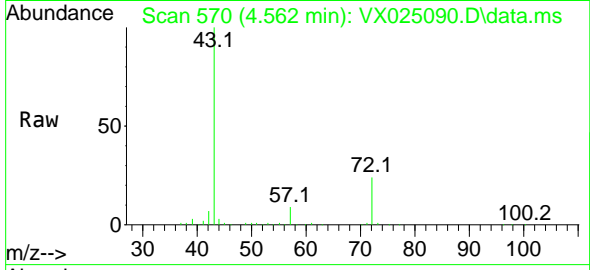




#22
 2-Butanone
 Concen: 96.470 ug/L
 RT: 4.562 min Scan# 570
 Delta R.T. 0.000 min
 Lab File: VX025090.D
 Acq: 08 Nov 2021 10:13

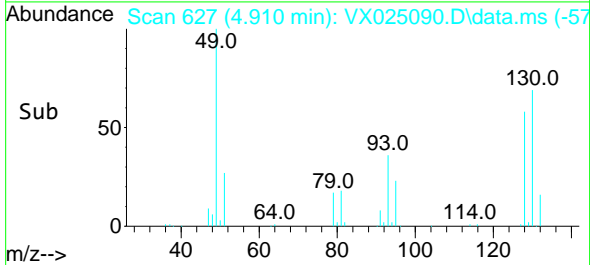
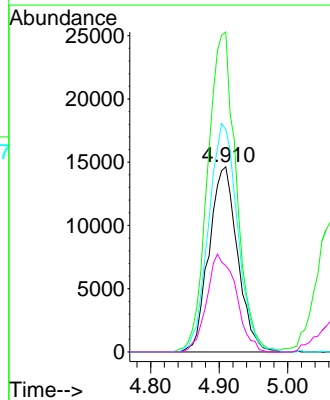
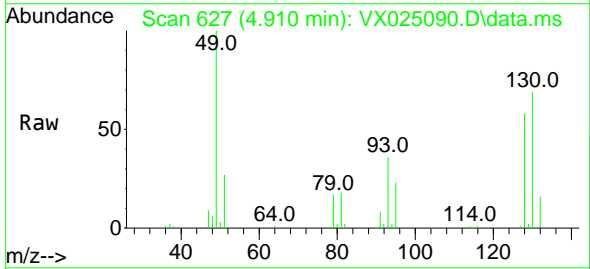
Instrument : MSVOA_X
 ClientSampleId : VSTD050626

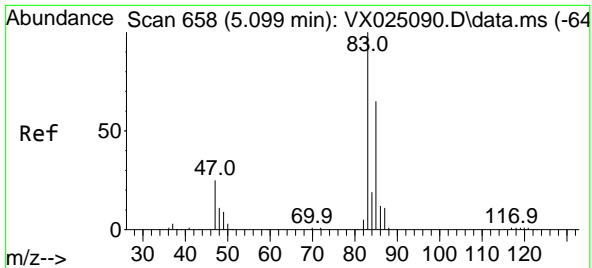
Tgt Ion: 43 Resp: 156790
 Ion Ratio Lower Upper
 43 100
 72 26.5 18.4 55.0



#23
 Bromochloromethane
 Concen: 53.035 ug/L
 RT: 4.910 min Scan# 627
 Delta R.T. 0.000 min
 Lab File: VX025090.D
 Acq: 08 Nov 2021 10:13

Tgt Ion: 128 Resp: 42298
 Ion Ratio Lower Upper
 128 100
 49 172.8 71.5 132.7#
 130 120.1 84.3 156.5
 51 46.5 27.9 41.9#

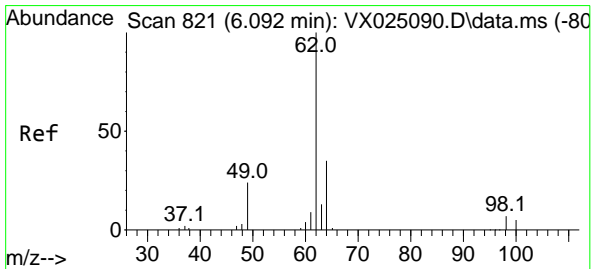
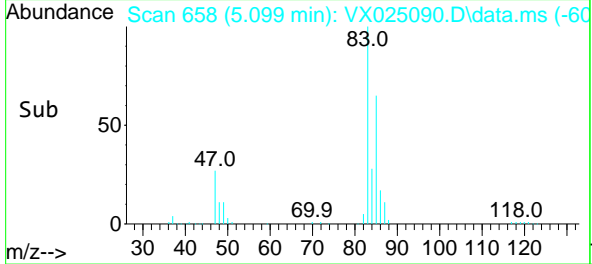
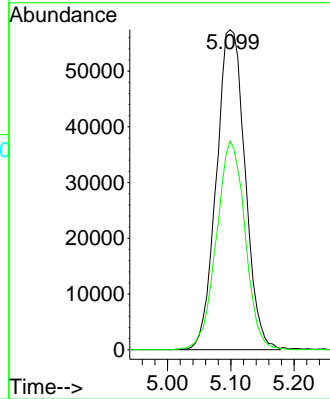
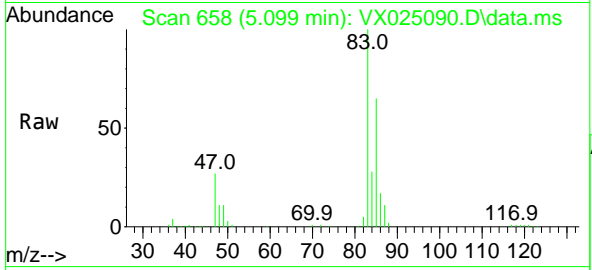




#25
 Chloroform
 Concen: 49.821 ug/L
 RT: 5.099 min Scan# 61
 Delta R.T. 0.000 min
 Lab File: VX025090.D
 Acq: 08 Nov 2021 10:13

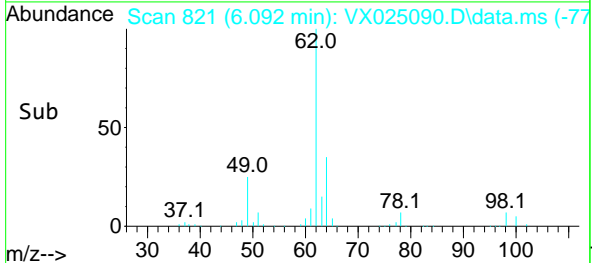
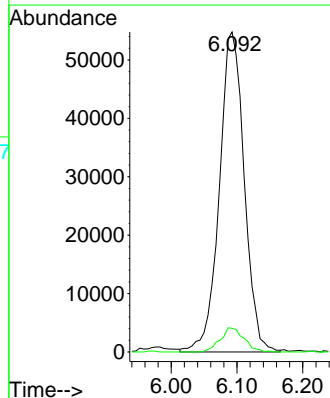
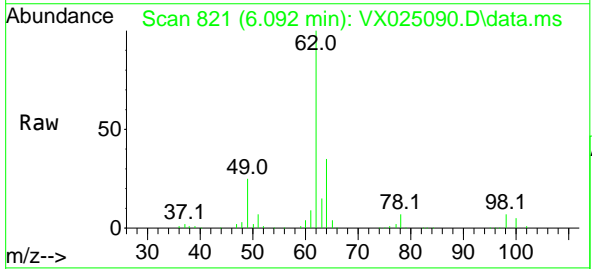
Instrument :
 MSVOA_X
 ClientSampleId :
 VSTD050626

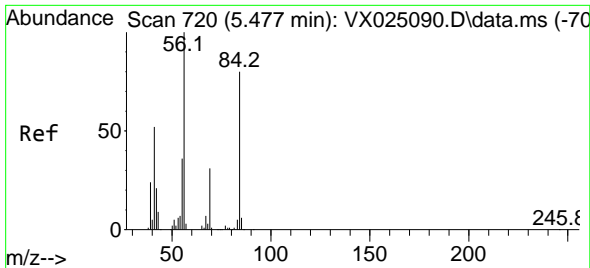
Tgt Ion: 83 Resp: 180742
 Ion Ratio Lower Upper
 83 100
 85 65.2 46.3 86.1



#27
 1,2-Dichloroethane
 Concen: 45.982 ug/L
 RT: 6.092 min Scan# 821
 Delta R.T. 0.000 min
 Lab File: VX025090.D
 Acq: 08 Nov 2021 10:13

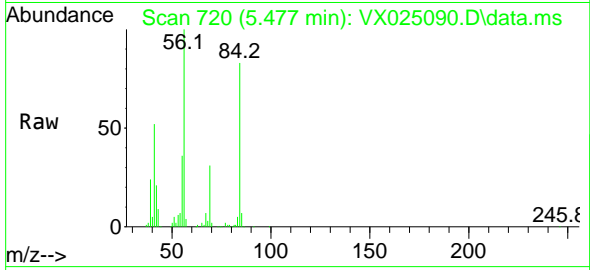
Tgt Ion: 62 Resp: 144391
 Ion Ratio Lower Upper
 62 100
 98 7.4 5.5 8.3



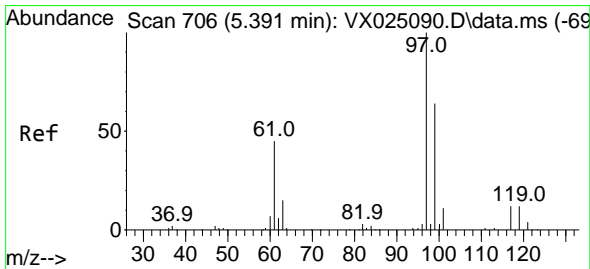
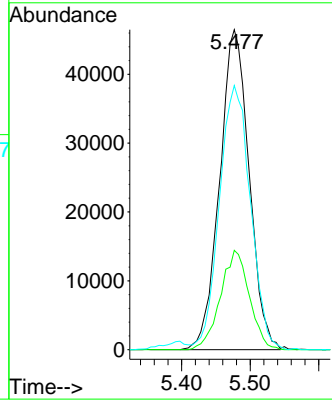
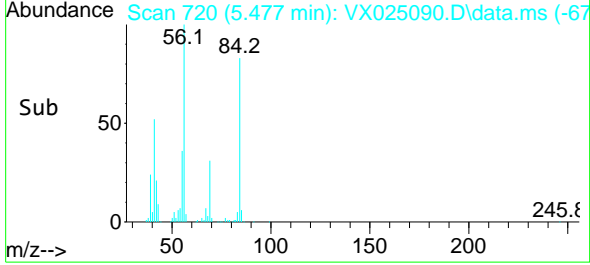


#29
 Cyclohexane
 Concen: 58.767 ug/L
 RT: 5.477 min Scan# 712
 Delta R.T. 0.000 min
 Lab File: VX025090.D
 Acq: 08 Nov 2021 10:13

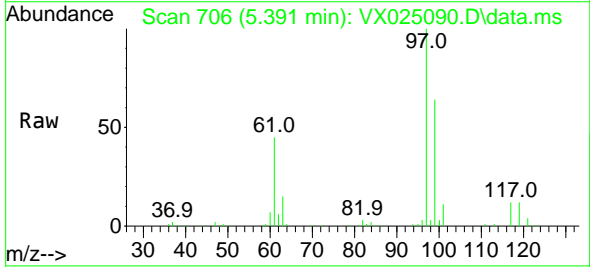
Instrument : MSVOA_X
 ClientSampleId : VSTD050626



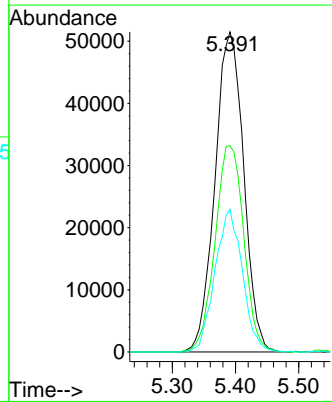
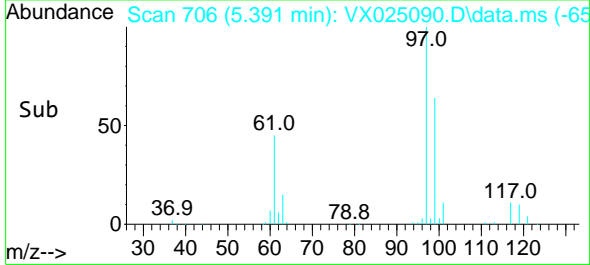
Tgt Ion: 56 Resp: 138761
 Ion Ratio Lower Upper
 56 100
 69 30.4 30.8 46.2#
 84 87.0 86.8 130.2

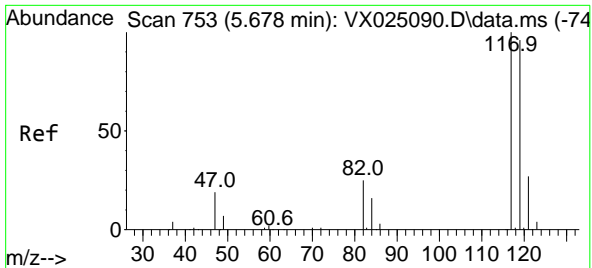


#30
 1,1,1-Trichloroethane
 Concen: 54.742 ug/L
 RT: 5.391 min Scan# 706
 Delta R.T. 0.000 min
 Lab File: VX025090.D
 Acq: 08 Nov 2021 10:13



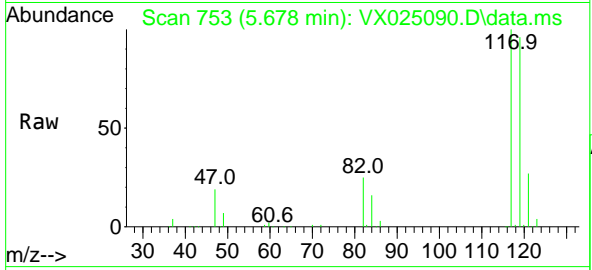
Tgt Ion: 97 Resp: 162238
 Ion Ratio Lower Upper
 97 100
 99 64.6 53.1 79.7
 61 42.5 26.3 39.5#



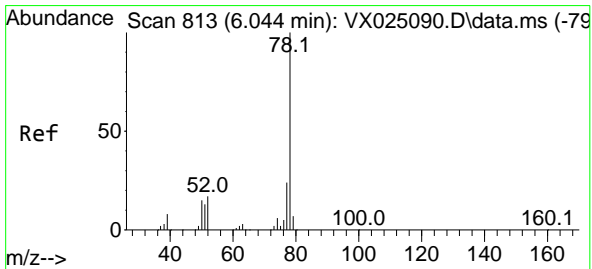
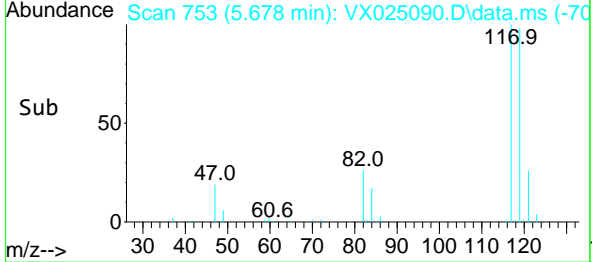
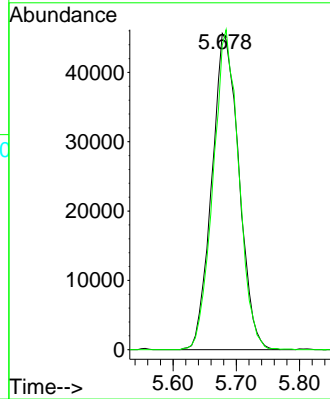


#31
 Carbon tetrachloride
 Concen: 54.172 ug/L
 RT: 5.678 min Scan# 711
 Delta R.T. 0.000 min
 Lab File: VX025090.D
 Acq: 08 Nov 2021 10:13

Instrument :
 MSVOA_X
 ClientSampleId :
 VSTD050626

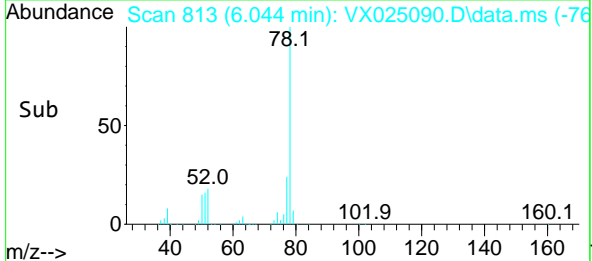
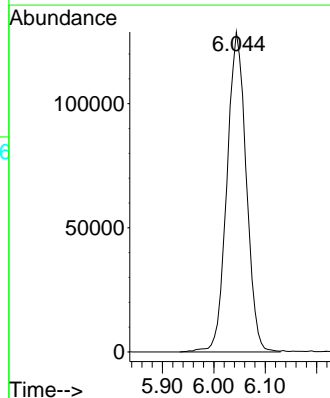
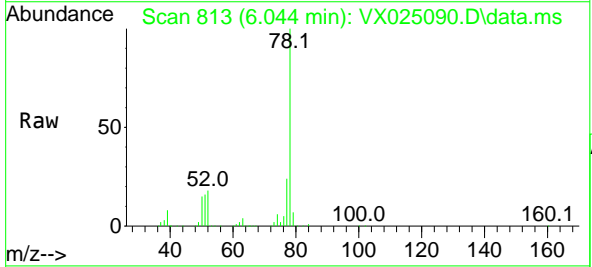


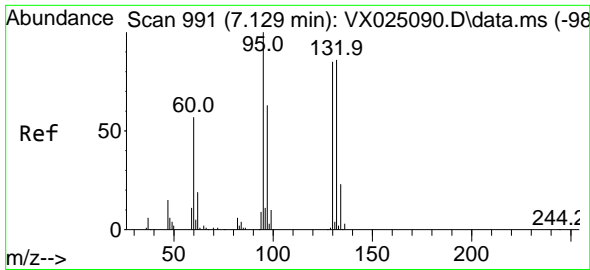
Tgt Ion:117 Resp: 135545
 Ion Ratio Lower Upper
 117 100
 119 95.8 76.0 114.0



#33
 Benzene
 Concen: 61.219 ug/L
 RT: 6.044 min Scan# 813
 Delta R.T. 0.000 min
 Lab File: VX025090.D
 Acq: 08 Nov 2021 10:13

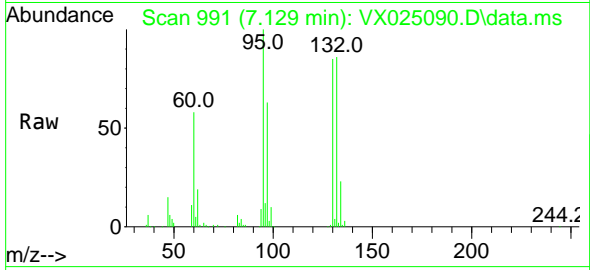
Tgt Ion: 78 Resp: 336515





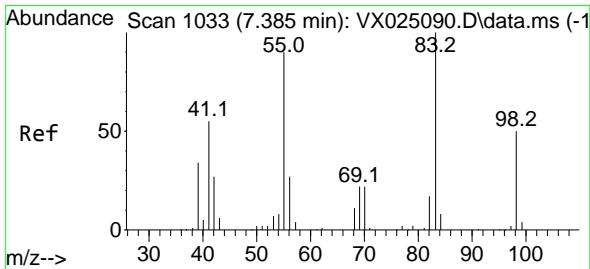
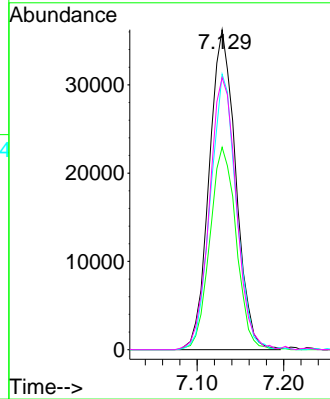
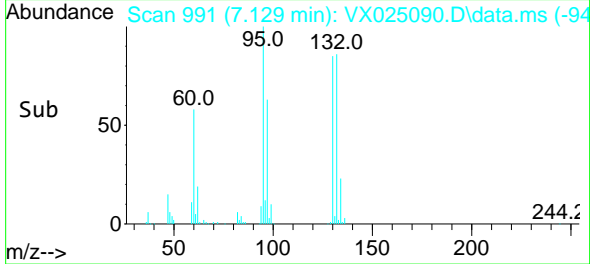
#34
 Trichloroethene
 Concen: 49.398 ug/L
 RT: 7.129 min Scan# 991
 Delta R.T. 0.000 min
 Lab File: VX025090.D
 Acq: 08 Nov 2021 10:13

Instrument : MSVOA_X
 ClientSampleId : VSTD050626

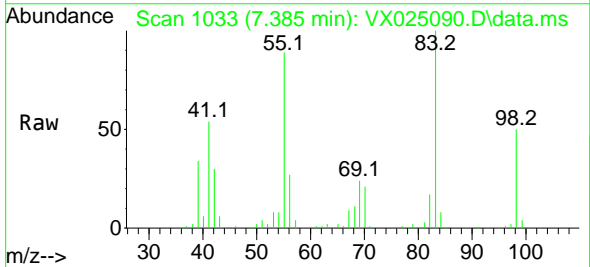


Tgt Ion: 95 Resp: 77120

Ion	Ratio	Lower	Upper
95	100		
97	63.2	44.2	82.2
132	86.1	60.1	111.5
130	85.0	60.8	112.8

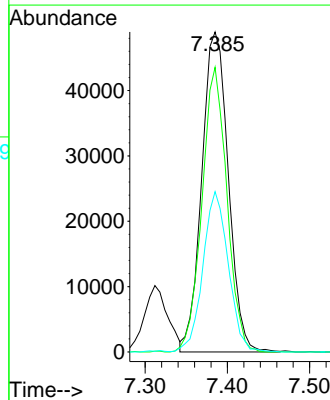
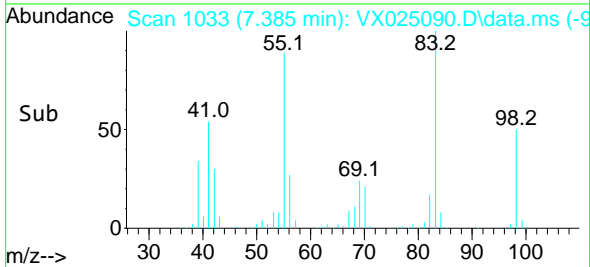


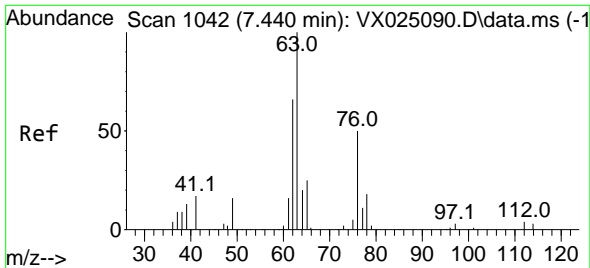
#35
 Methylcyclohexane
 Concen: 49.114 ug/L
 RT: 7.385 min Scan# 1033
 Delta R.T. 0.000 min
 Lab File: VX025090.D
 Acq: 08 Nov 2021 10:13



Tgt Ion: 83 Resp: 110011

Ion	Ratio	Lower	Upper
83	100		
55	83.5	52.6	79.0
98	47.3	37.9	56.9

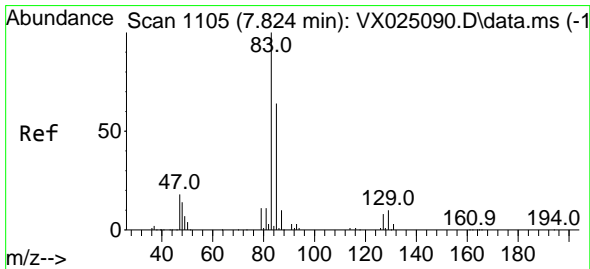
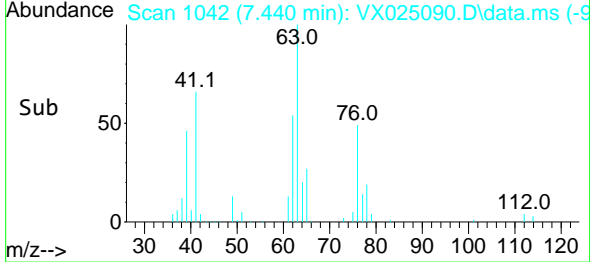
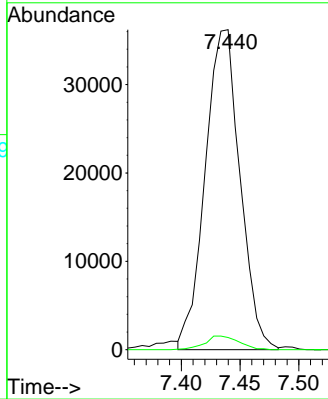
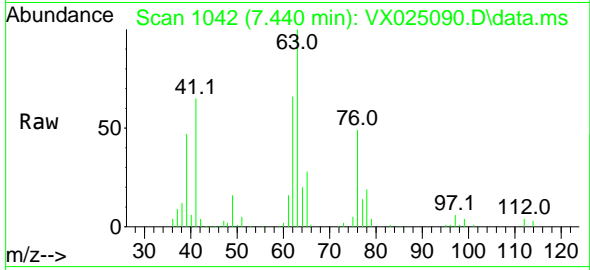




#37
 1,2-Dichloropropane
 Concen: 50.777 ug/L
 RT: 7.440 min Scan# 1042
 Delta R.T. 0.000 min
 Lab File: VX025090.D
 Acq: 08 Nov 2021 10:13

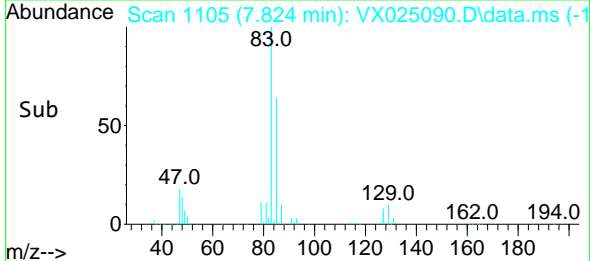
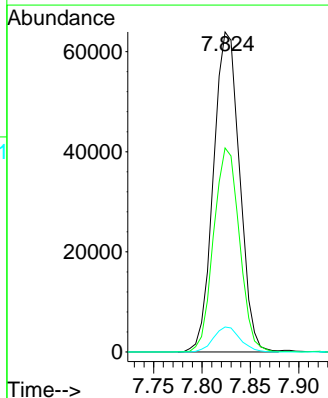
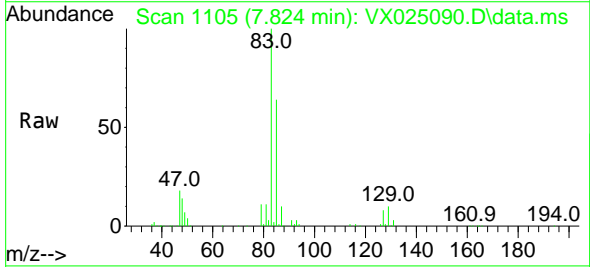
Instrument : MSVOA_X
 ClientSampleId : VSTD050626

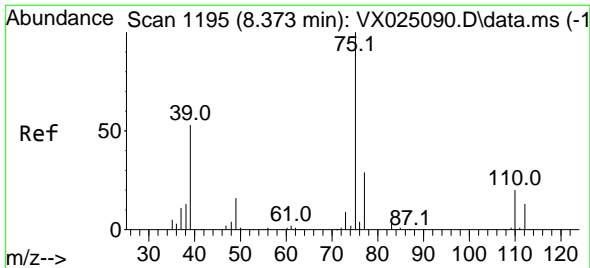
Tgt Ion: 63 Resp: 74768
 Ion Ratio Lower Upper
 63 100
 112 4.2 4.0 6.0



#38
 Bromodichloromethane
 Concen: 52.706 ug/L
 RT: 7.824 min Scan# 1105
 Delta R.T. 0.000 min
 Lab File: VX025090.D
 Acq: 08 Nov 2021 10:13

Tgt Ion: 83 Resp: 120172
 Ion Ratio Lower Upper
 83 100
 85 63.8 46.8 87.0
 127 7.8 8.2 12.2#





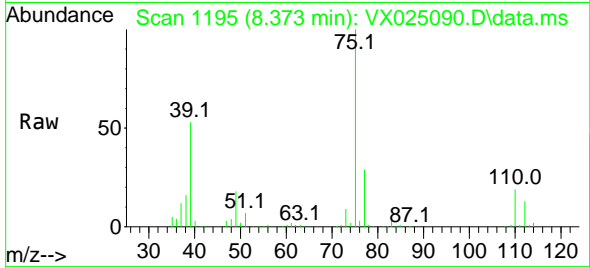
#39
 cis-1,3-Dichloropropene
 Concen: 46.987 ug/L
 RT: 8.373 min Scan# 1195
 Delta R.T. 0.000 min
 Lab File: VX025090.D
 Acq: 08 Nov 2021 10:13

Instrument :

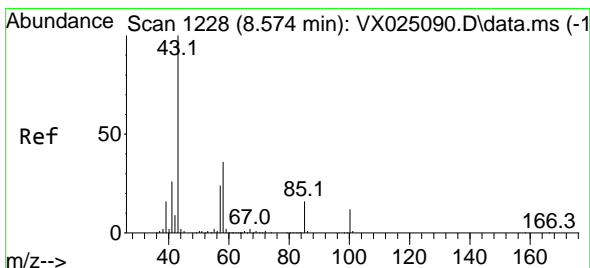
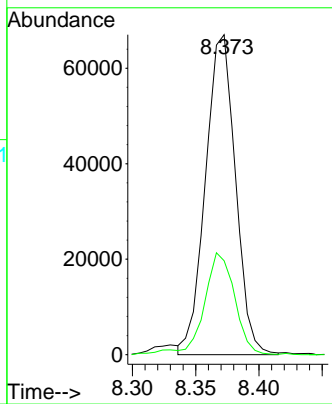
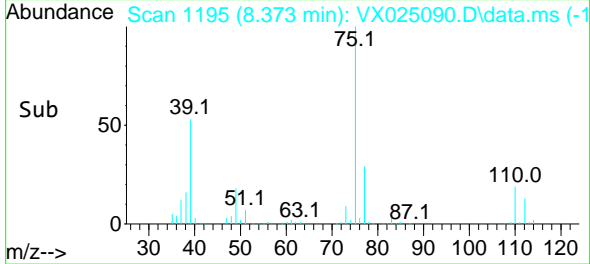
MSVOA_X

ClientSampleId :

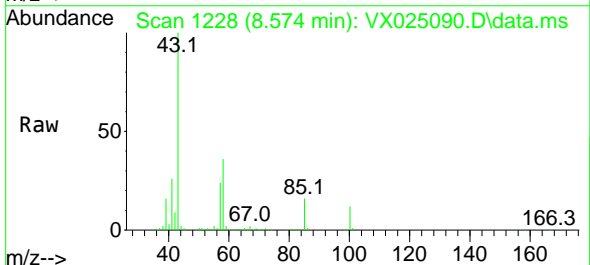
VSTD050626



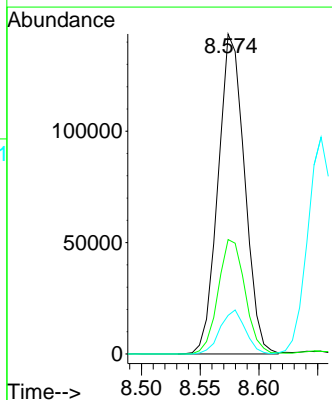
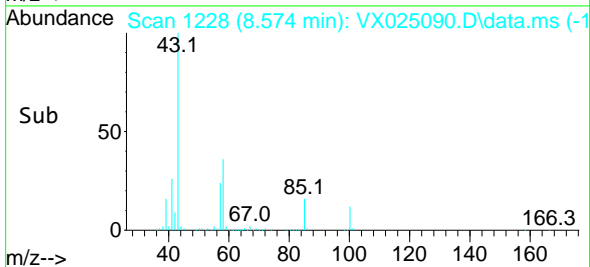
Tgt Ion: 75 Resp: 110676
 Ion Ratio Lower Upper
 75 100
 77 29.4 23.1 42.9

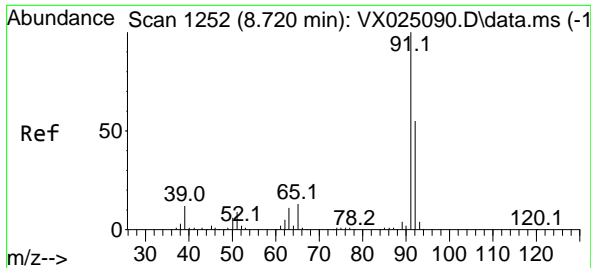


#40
 4-Methyl-2-pentanone
 Concen: 99.622 ug/L
 RT: 8.574 min Scan# 1228
 Delta R.T. 0.000 min
 Lab File: VX025090.D
 Acq: 08 Nov 2021 10:13



Tgt Ion: 43 Resp: 225302
 Ion Ratio Lower Upper
 43 100
 58 36.2 41.3 61.9#
 100 13.1 19.6 29.4#

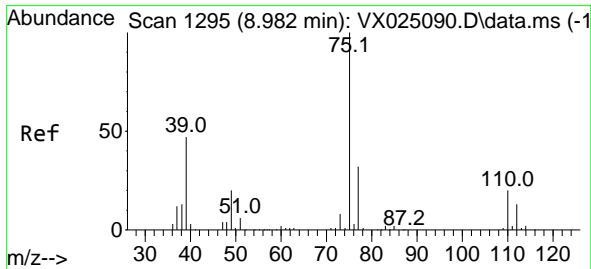
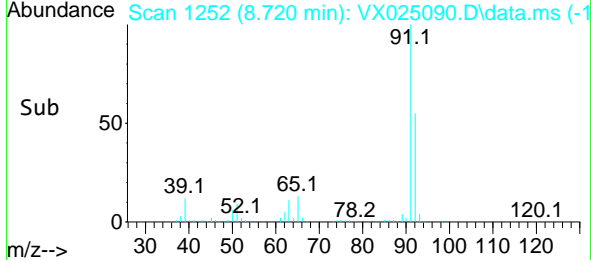
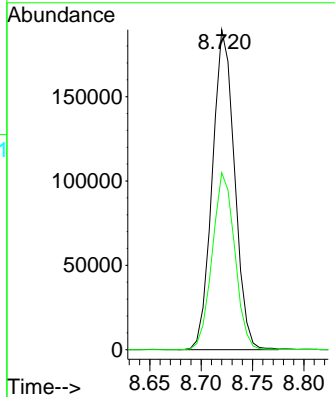
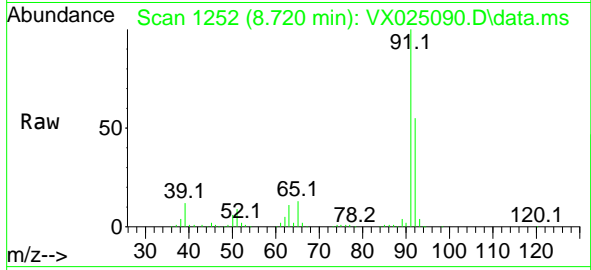




#42
 Toluene
 Concen: 50.383 ug/L
 RT: 8.720 min Scan# 1252
 Delta R.T. 0.000 min
 Lab File: VX025090.D
 Acq: 08 Nov 2021 10:13

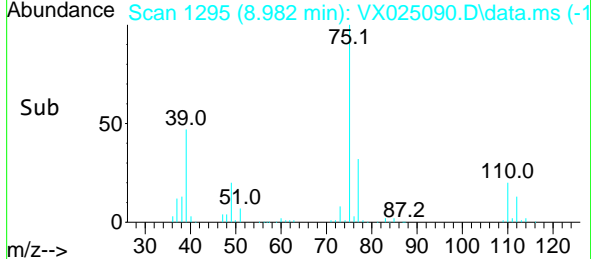
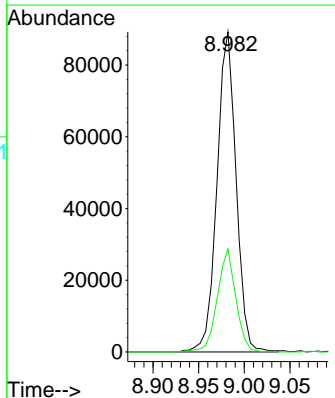
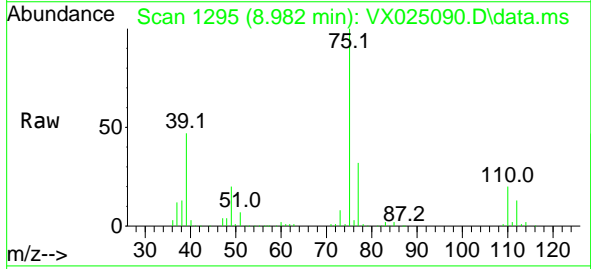
Instrument : MSVOA_X
 ClientSampleId : VSTD050626

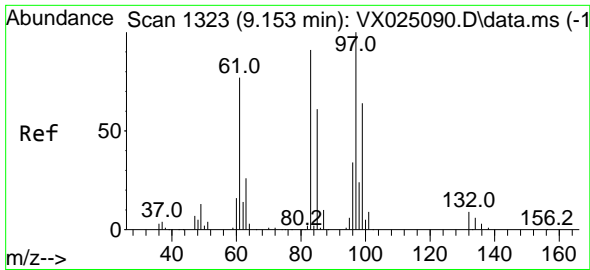
Tgt Ion: 91 Resp: 285356
 Ion Ratio Lower Upper
 91 100
 92 55.3 39.3 72.9



#44
 trans-1,3-Dichloropropene
 Concen: 52.616 ug/L
 RT: 8.982 min Scan# 1295
 Delta R.T. 0.000 min
 Lab File: VX025090.D
 Acq: 08 Nov 2021 10:13

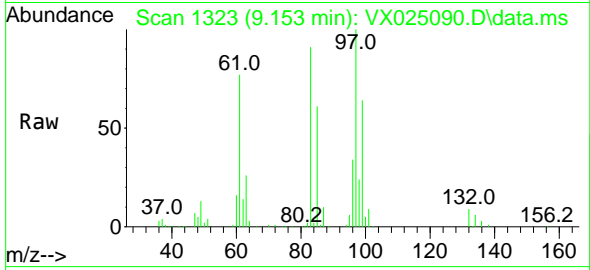
Tgt Ion: 75 Resp: 130119
 Ion Ratio Lower Upper
 75 100
 77 32.2 23.4 43.6





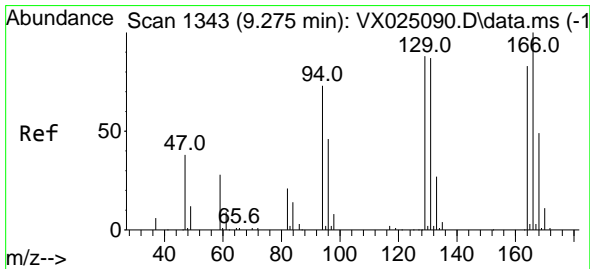
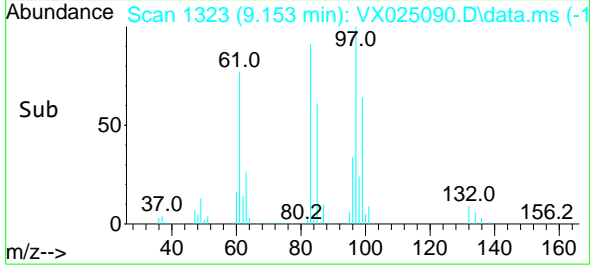
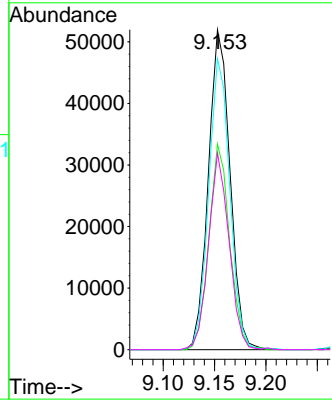
#45
 1,1,2-Trichloroethane
 Concen: 53.963 ug/L
 RT: 9.153 min Scan# 1323
 Delta R.T. 0.000 min
 Lab File: VX025090.D
 Acq: 08 Nov 2021 10:13

Instrument : MSVOA_X
 ClientSampleId : VSTD050626

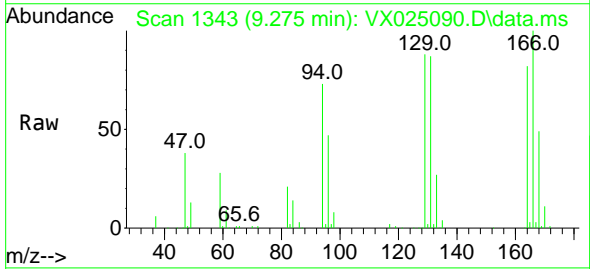


Tgt Ion: 97 Resp: 76232

Ion	Ratio	Lower	Upper
97	100		
99	64.3	43.5	80.7
83	90.9	58.2	108.0
85	61.5	37.6	69.8

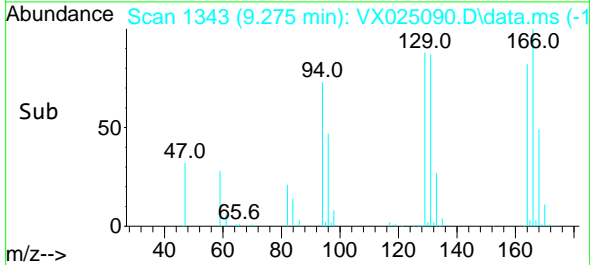
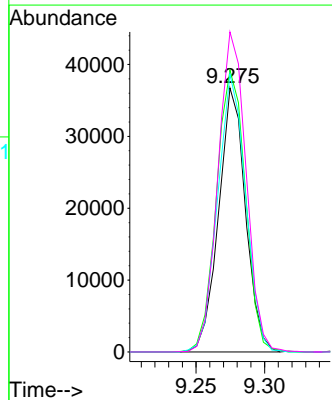


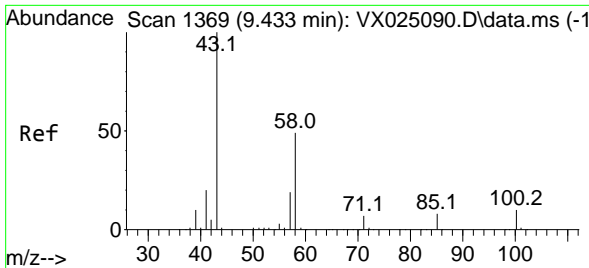
#46
 Tetrachloroethene
 Concen: 51.117 ug/L
 RT: 9.275 min Scan# 1343
 Delta R.T. 0.000 min
 Lab File: VX025090.D
 Acq: 08 Nov 2021 10:13



Tgt Ion: 164 Resp: 49994

Ion	Ratio	Lower	Upper
164	100		
129	106.7	78.5	145.7
131	105.2	70.5	130.9
166	121.2	88.3	164.1



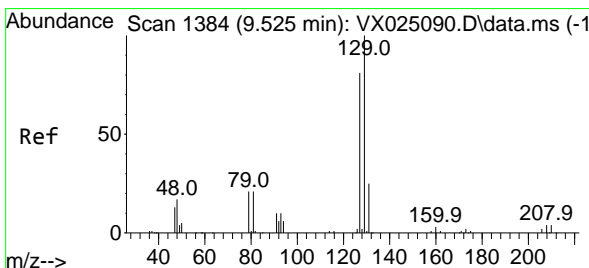
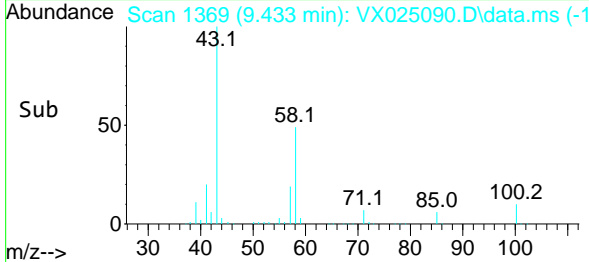
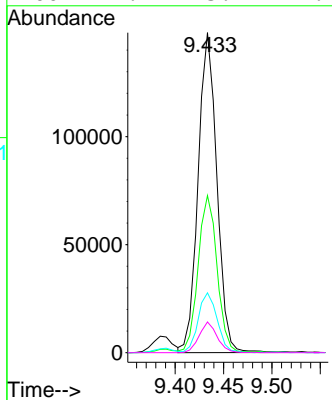
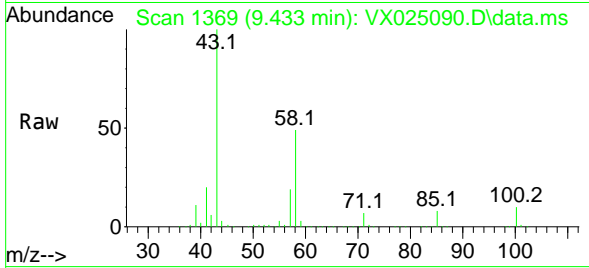


#48
 2-Hexanone
 Concen: 105.079 ug/L
 RT: 9.433 min Scan# 1369
 Delta R.T. 0.000 min
 Lab File: VX025090.D
 Acq: 08 Nov 2021 10:13

Instrument : MSVOA_X
 ClientSampleId : VSTD050626

Tgt Ion: 43 Resp: 200027

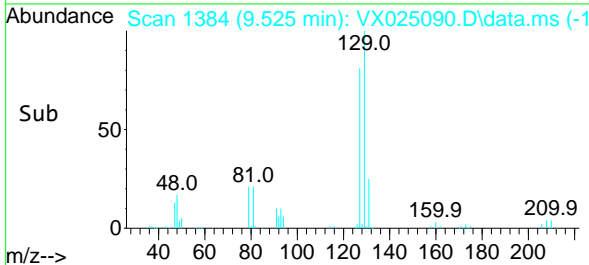
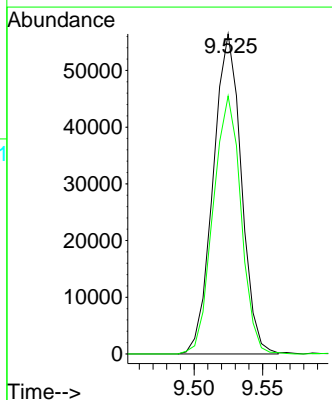
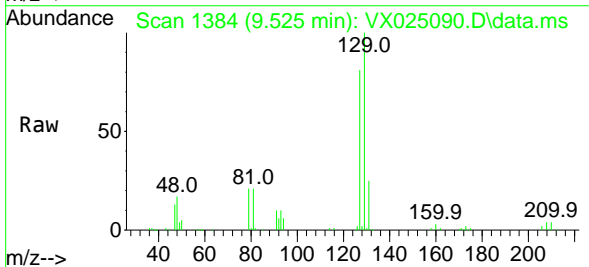
Ion	Ratio	Lower	Upper
43	100		
58	49.0	56.0	84.0#
57	19.1	20.4	30.6#
100	9.2	15.1	22.7#

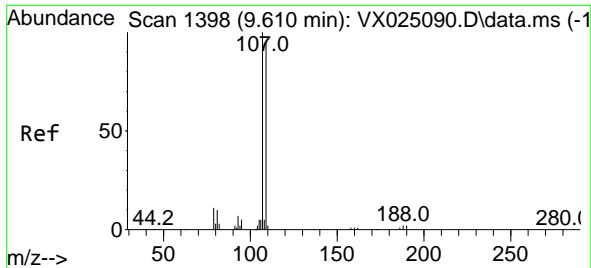


#49
 Dibromochloromethane
 Concen: 51.929 ug/L
 RT: 9.525 min Scan# 1384
 Delta R.T. 0.000 min
 Lab File: VX025090.D
 Acq: 08 Nov 2021 10:13

Tgt Ion: 129 Resp: 80674

Ion	Ratio	Lower	Upper
129	100		
127	80.6	54.1	100.5



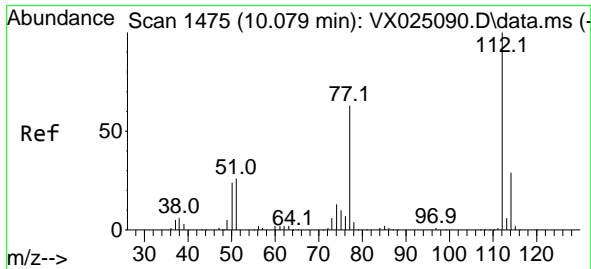
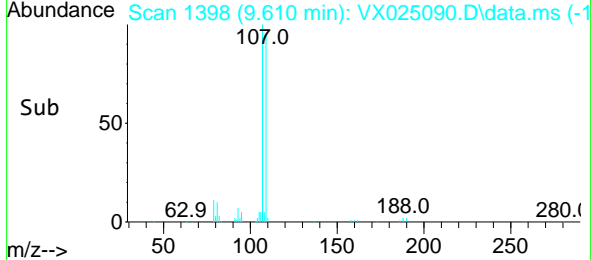
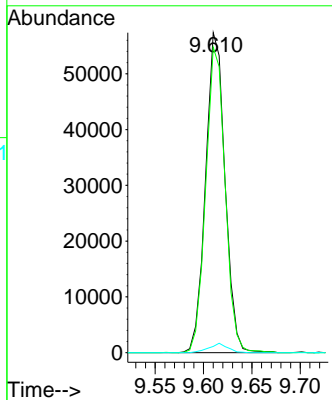
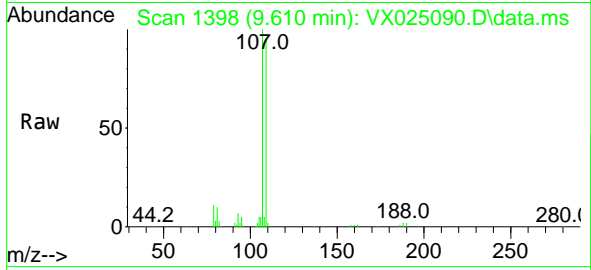


#50
 1,2-Dibromoethane
 Concen: 52.202 ug/L
 RT: 9.610 min Scan# 1398
 Delta R.T. 0.000 min
 Lab File: VX025090.D
 Acq: 08 Nov 2021 10:13

Instrument : MSVOA_X
 ClientSampleId : VSTD050626

Tgt Ion:107 Resp: 80391

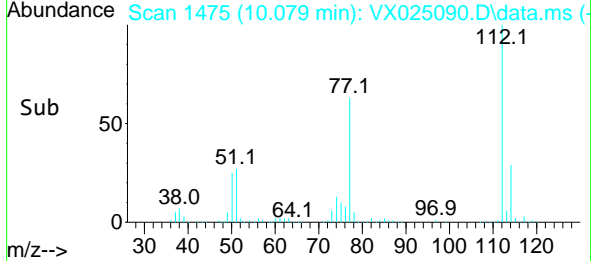
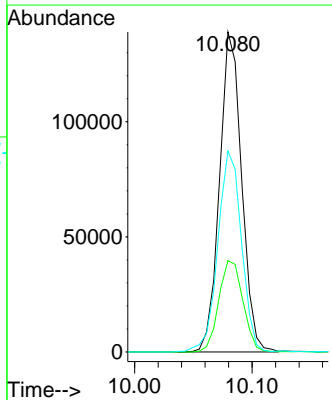
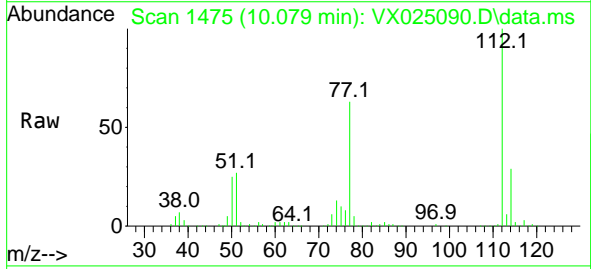
Ion	Ratio	Lower	Upper
107	100		
109	95.5	63.8	118.6
188	1.9	2.2	3.2

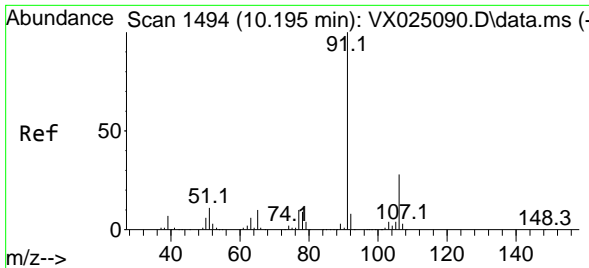


#51
 Chlorobenzene
 Concen: 52.744 ug/L
 RT: 10.079 min Scan# 1475
 Delta R.T. 0.000 min
 Lab File: VX025090.D
 Acq: 08 Nov 2021 10:13

Tgt Ion:112 Resp: 181785

Ion	Ratio	Lower	Upper
112	100		
114	28.6	22.7	42.3
77	62.8	46.8	70.2

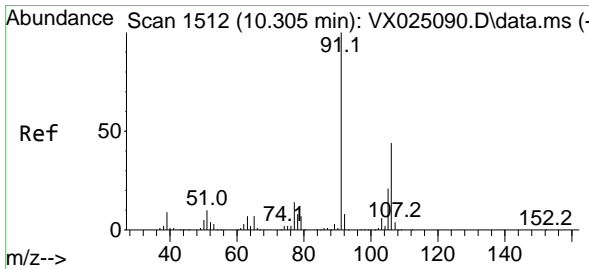
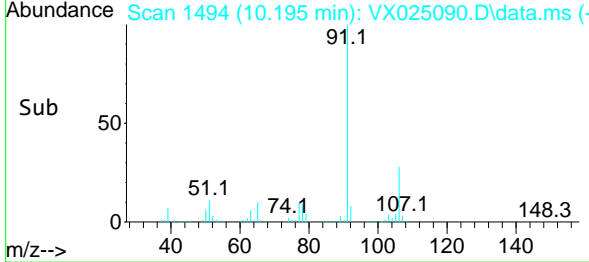
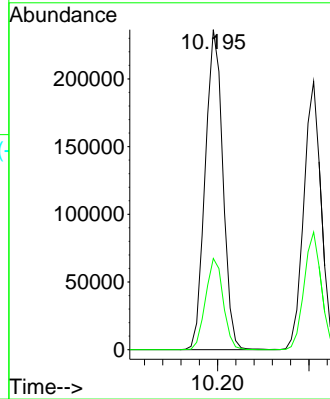
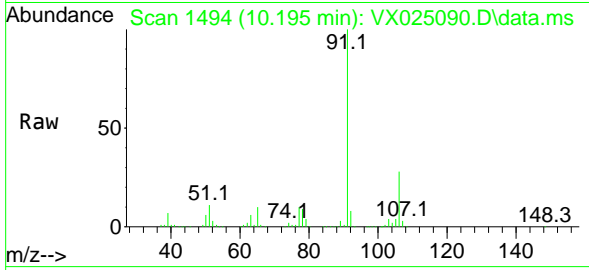




#52
 Ethylbenzene
 Concen: 48.904 ug/L
 RT: 10.195 min Scan# 1494
 Delta R.T. 0.000 min
 Lab File: VX025090.D
 Acq: 08 Nov 2021 10:13

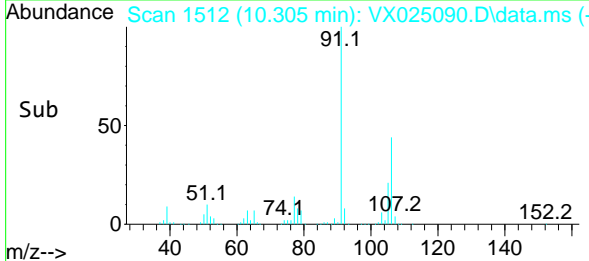
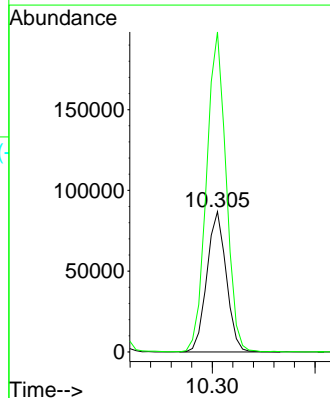
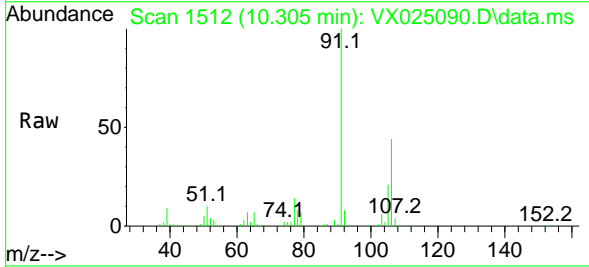
Instrument : MSVOA_X
 ClientSampleId : VSTD050626

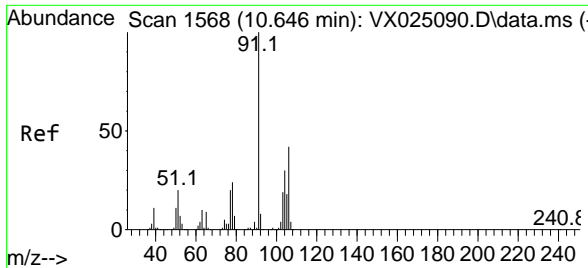
Tgt Ion: 91 Resp: 316491
 Ion Ratio Lower Upper
 91 100
 106 28.5 20.2 37.6



#53
 m,p-Xylene
 Concen: 50.734 ug/L
 RT: 10.305 min Scan# 1512
 Delta R.T. 0.000 min
 Lab File: VX025090.D
 Acq: 08 Nov 2021 10:13

Tgt Ion: 106 Resp: 114072
 Ion Ratio Lower Upper
 106 100
 91 228.0 160.2 297.6

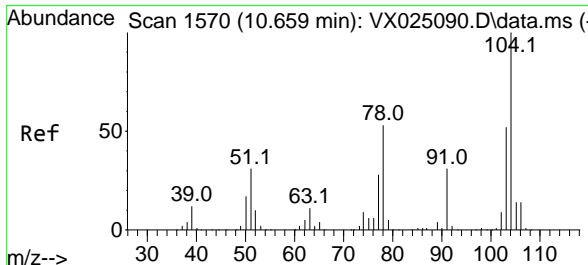
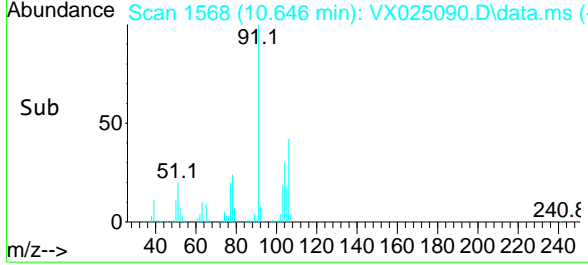
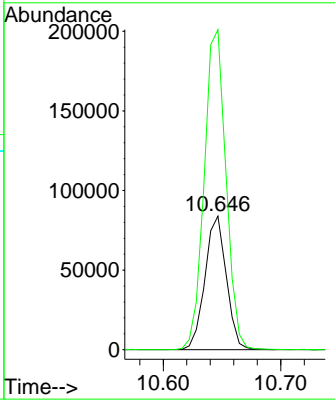
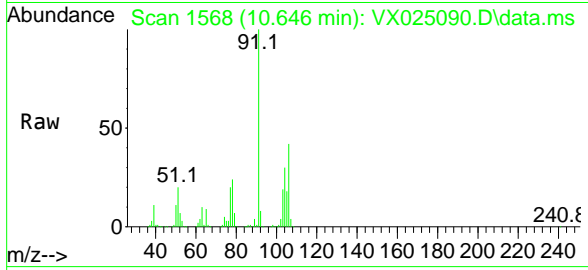




#54
 o-Xylene
 Concen: 48.706 ug/L
 RT: 10.646 min Scan# 1568
 Delta R.T. 0.000 min
 Lab File: VX025090.D
 Acq: 08 Nov 2021 10:13

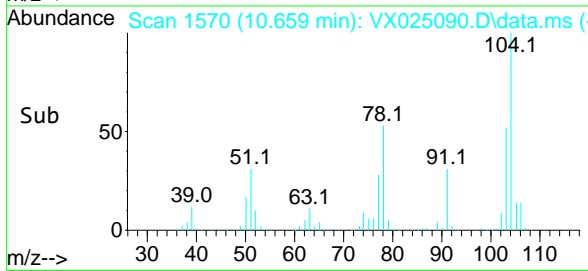
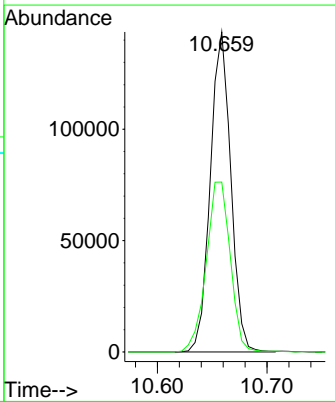
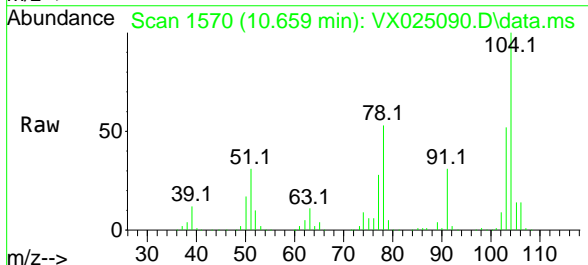
Instrument : MSVOA_X
ClientSampleId : VSTD050626

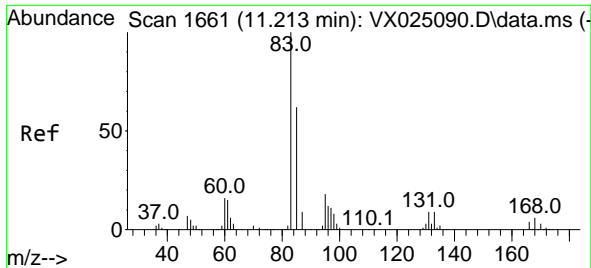
Tgt Ion:106 Resp: 106203
 Ion Ratio Lower Upper
 106 100
 91 239.6 164.4 305.4



#55
 Styrene
 Concen: 50.429 ug/L
 RT: 10.659 min Scan# 1570
 Delta R.T. 0.000 min
 Lab File: VX025090.D
 Acq: 08 Nov 2021 10:13

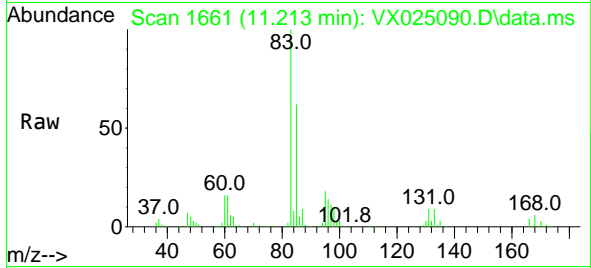
Tgt Ion:104 Resp: 186922
 Ion Ratio Lower Upper
 104 100
 78 53.1 38.2 71.0



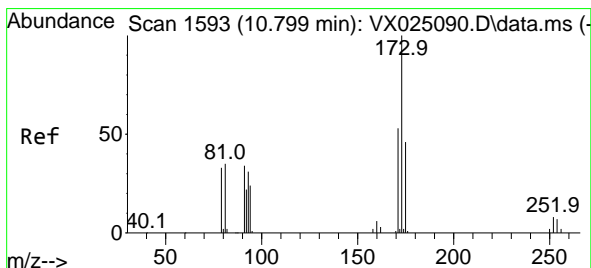
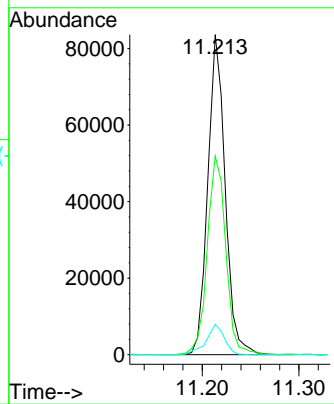
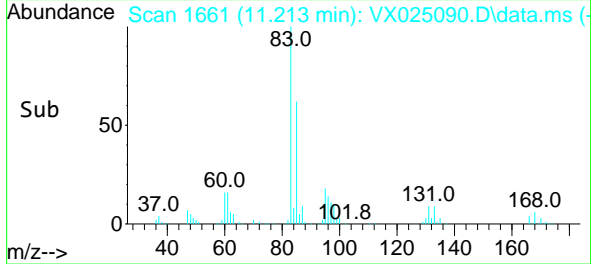


#57
 1,1,2,2-Tetrachloroethane
 Concen: 47.725 ug/L
 RT: 11.213 min Scan# 1661
 Delta R.T. 0.000 min
 Lab File: VX025090.D
 Acq: 08 Nov 2021 10:13

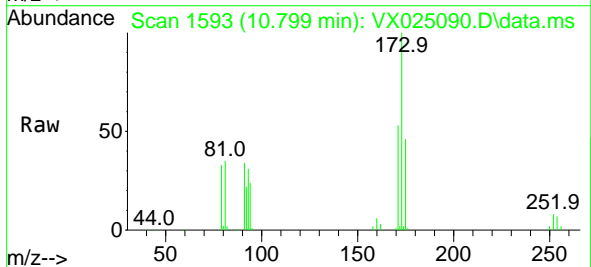
Instrument : MSVOA_X
 ClientSampleId : VSTD050626



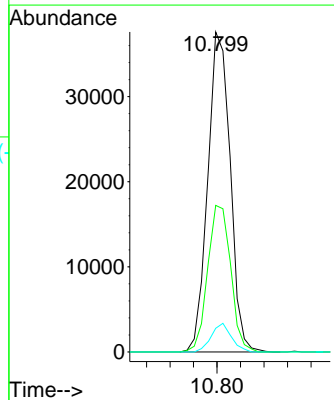
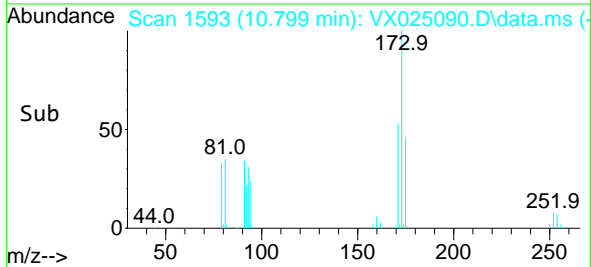
Tgt Ion: 83 Resp: 104307
 Ion Ratio Lower Upper
 83 100
 85 62.1 46.9 87.1
 131 9.5 8.7 13.1

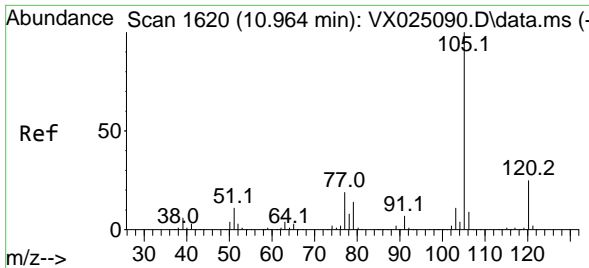


#59
 Bromoform
 Concen: 53.415 ug/L
 RT: 10.799 min Scan# 1593
 Delta R.T. 0.000 min
 Lab File: VX025090.D
 Acq: 08 Nov 2021 10:13



Tgt Ion: 173 Resp: 49828
 Ion Ratio Lower Upper
 173 100
 175 47.0 36.6 55.0
 254 8.0 4.9 7.3#



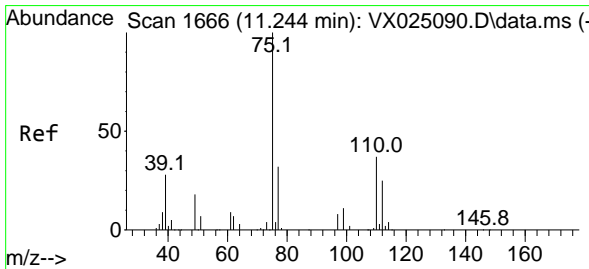
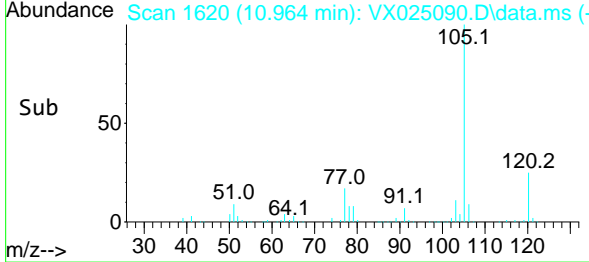
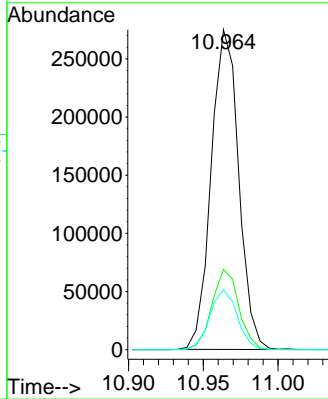
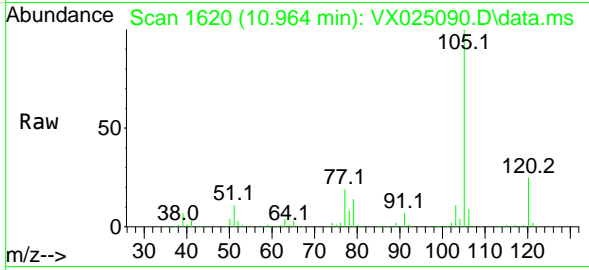


#60
 Isopropylbenzene
 Concen: 58.968 ug/L
 RT: 10.964 min Scan# 1620
 Delta R.T. 0.000 min
 Lab File: VX025090.D
 Acq: 08 Nov 2021 10:13

Instrument : MSVOA_X
 ClientSampleId : VSTD050626

Tgt Ion: 105 Resp: 351106

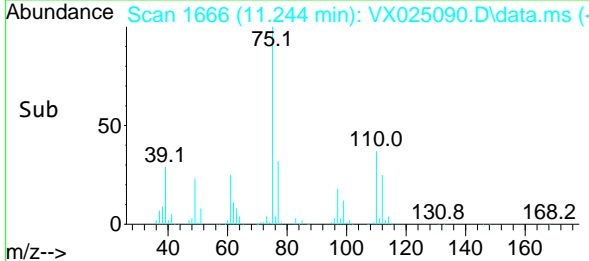
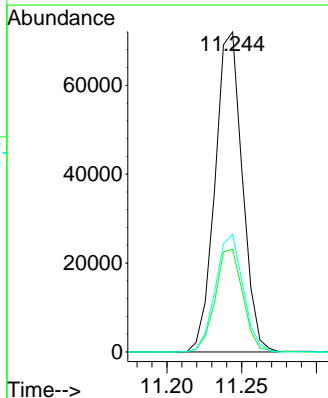
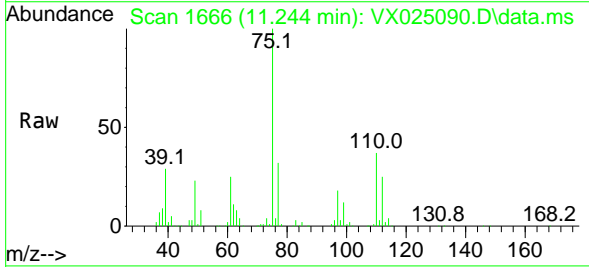
Ion	Ratio	Lower	Upper
105	100		
120	24.5	19.8	29.6
77	18.7	13.2	19.8

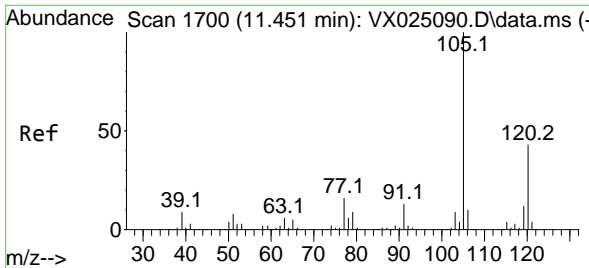


#61
 1,2,3-Trichloropropane
 Concen: 49.772 ug/L
 RT: 11.244 min Scan# 1666
 Delta R.T. 0.000 min
 Lab File: VX025090.D
 Acq: 08 Nov 2021 10:13

Tgt Ion: 75 Resp: 91388

Ion	Ratio	Lower	Upper
75	100		
77	32.5	26.6	39.8
110	37.3	37.2	55.8





#62
 1,3,5-Trimethylbenzene
 Concen: 52.251 ug/L
 RT: 11.451 min Scan# 1700
 Delta R.T. 0.000 min
 Lab File: VX025090.D
 Acq: 08 Nov 2021 10:13

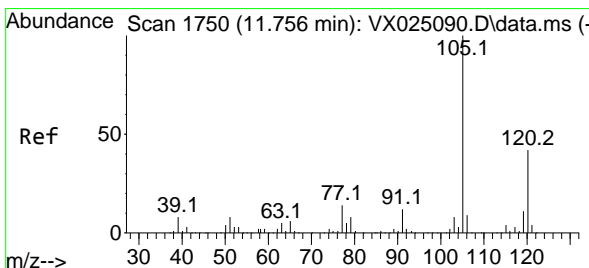
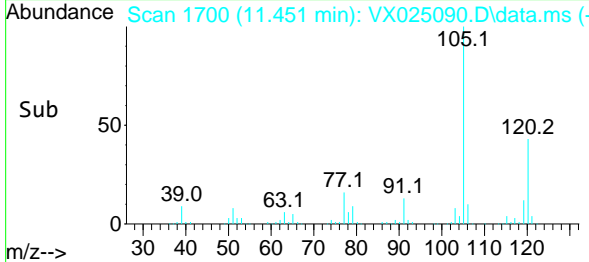
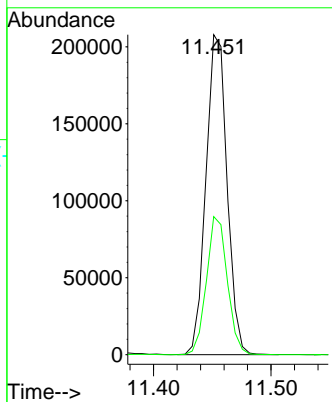
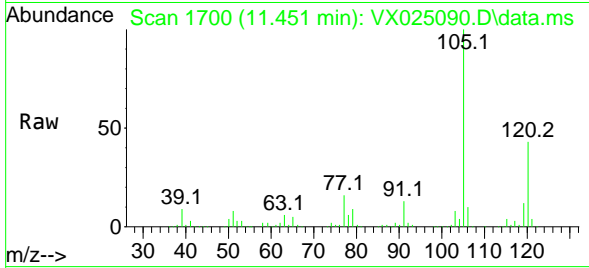
Instrument :

MSVOA_X

ClientSampleId :

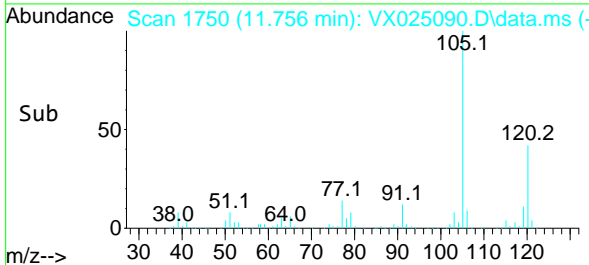
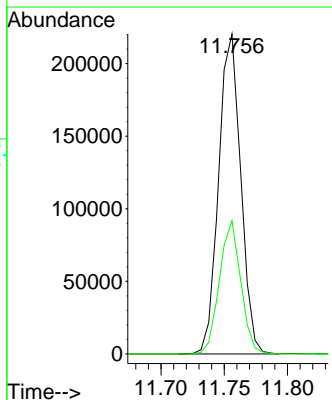
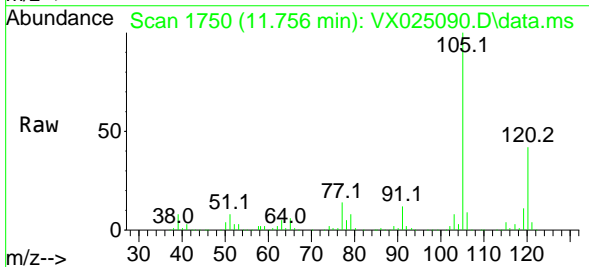
VSTD050626

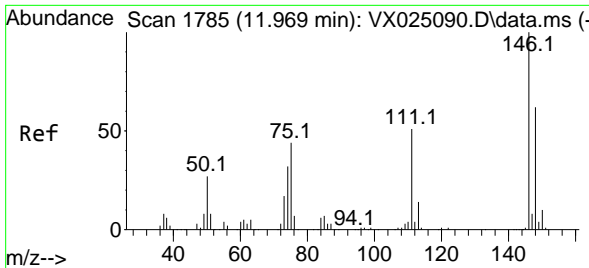
Tgt Ion:105 Resp: 259721
 Ion Ratio Lower Upper
 105 100
 120 42.7 34.4 51.6



#63
 1,2,4-Trimethylbenzene
 Concen: 53.270 ug/L
 RT: 11.756 min Scan# 1750
 Delta R.T. 0.000 min
 Lab File: VX025090.D
 Acq: 08 Nov 2021 10:13

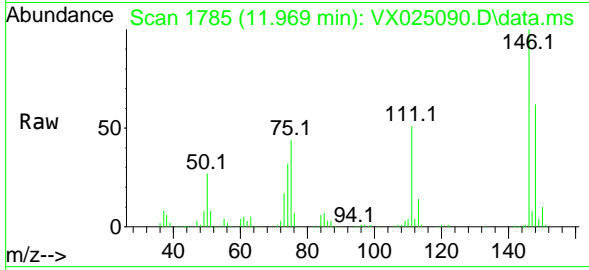
Tgt Ion:105 Resp: 267550
 Ion Ratio Lower Upper
 105 100
 120 40.2 31.0 46.6



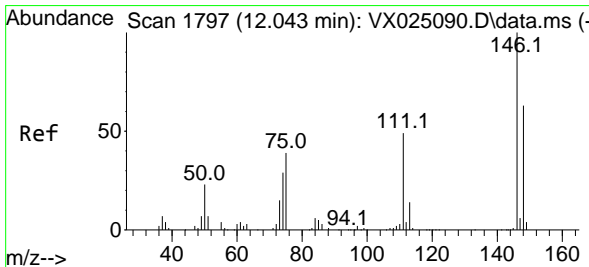
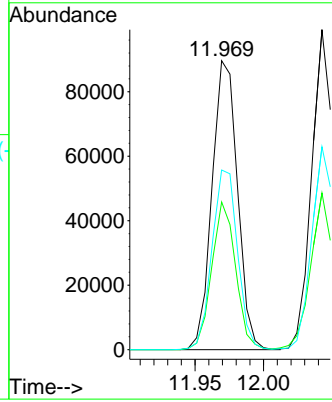
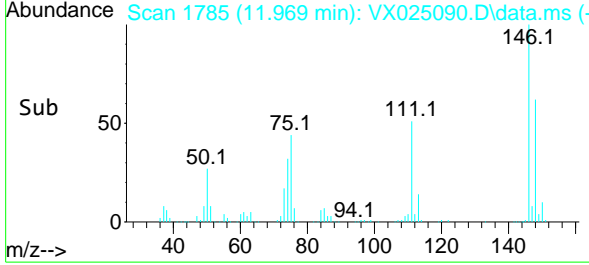


#64
 1,3-Dichlorobenzene
 Concen: 51.722 ug/L
 RT: 11.969 min Scan# 1785
 Delta R.T. 0.000 min
 Lab File: VX025090.D
 Acq: 08 Nov 2021 10:13

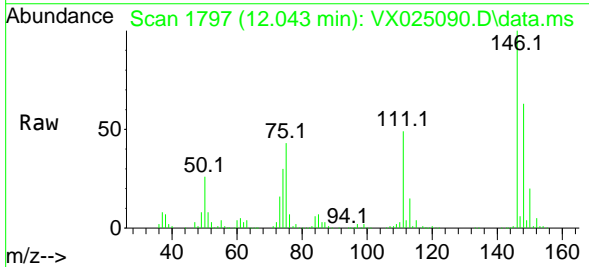
Instrument : MSVOA_X
 ClientSampleId : VSTD050626



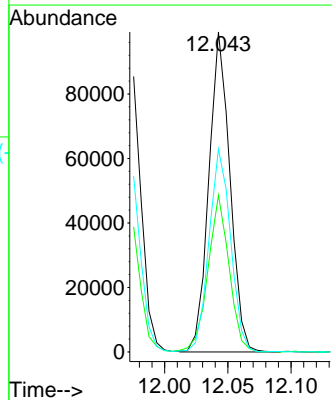
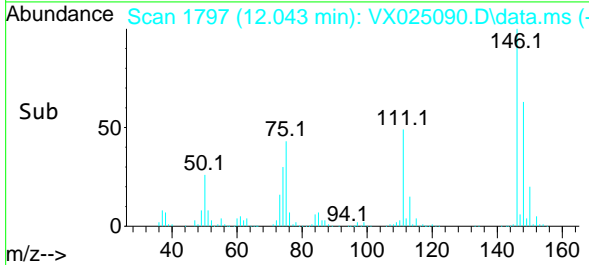
Tgt Ion:146 Resp: 115875
 Ion Ratio Lower Upper
 146 100
 111 51.1 31.1 57.9
 148 62.2 43.2 80.2

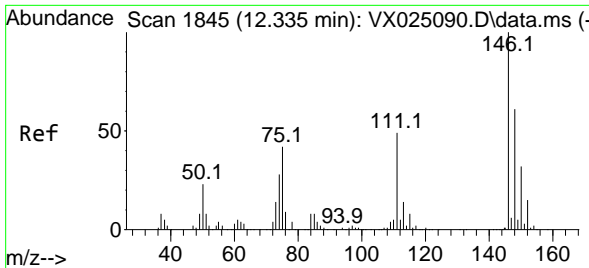


#65
 1,4-Dichlorobenzene
 Concen: 49.827 ug/L
 RT: 12.043 min Scan# 1797
 Delta R.T. 0.000 min
 Lab File: VX025090.D
 Acq: 08 Nov 2021 10:13



Tgt Ion:146 Resp: 114957
 Ion Ratio Lower Upper
 146 100
 111 49.0 31.8 59.0
 148 63.4 46.1 85.5



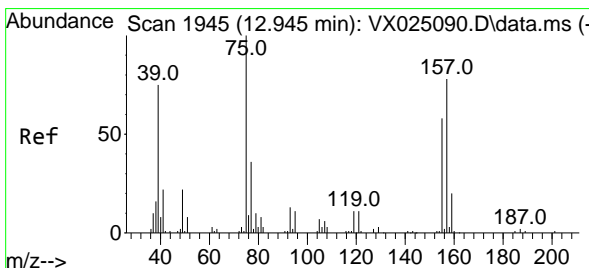
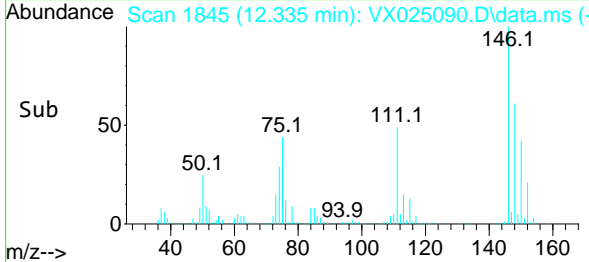
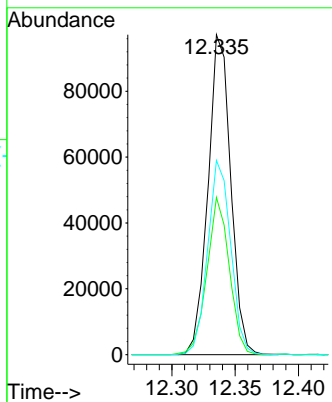
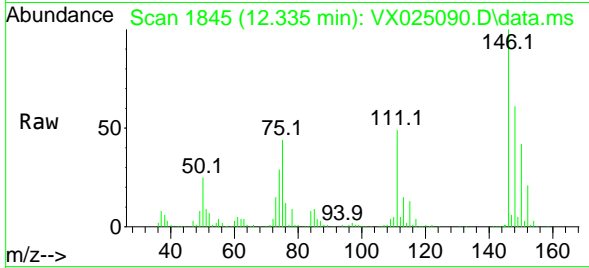


#67
 1,2-Dichlorobenzene
 Concen: 53.000 ug/L
 RT: 12.335 min Scan# 1845
 Delta R.T. 0.000 min
 Lab File: VX025090.D
 Acq: 08 Nov 2021 10:13

Instrument : MSVOA_X
 ClientSampleId : VSTD050626

Tgt Ion:146 Resp: 121677

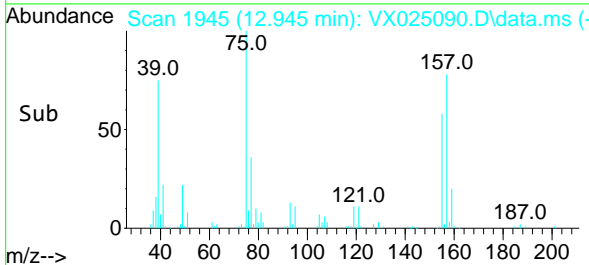
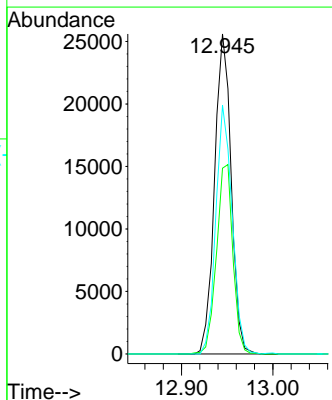
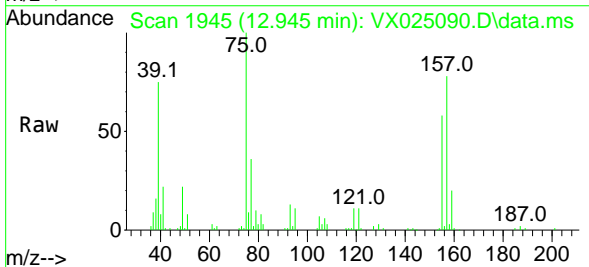
Ion	Ratio	Lower	Upper
146	100		
111	49.2	38.5	57.7
148	60.7	53.2	79.8

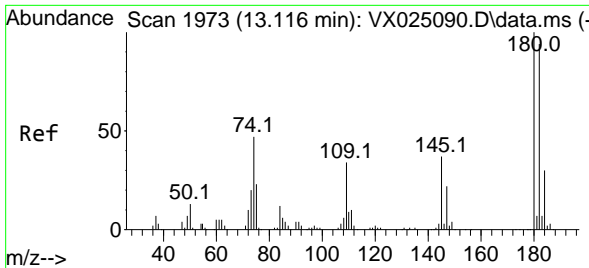


#68
 1,2-Dibromo-3-chloropropane
 Concen: 53.362 ug/L
 RT: 12.945 min Scan# 1945
 Delta R.T. 0.000 min
 Lab File: VX025090.D
 Acq: 08 Nov 2021 10:13

Tgt Ion: 75 Resp: 32300

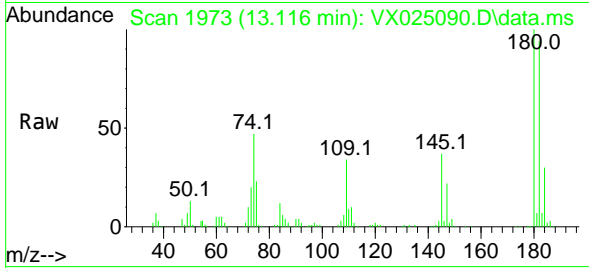
Ion	Ratio	Lower	Upper
75	100		
155	58.0	59.3	88.9#
157	77.7	68.7	103.1



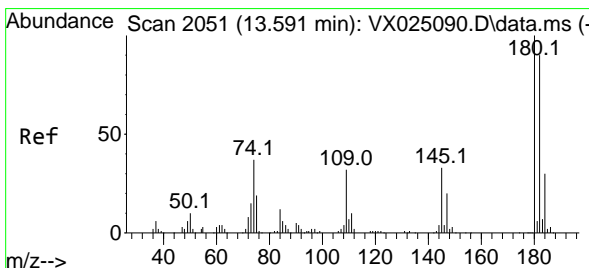
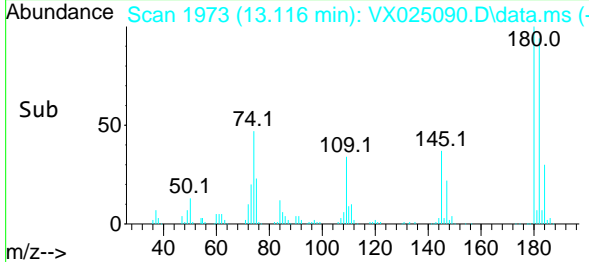
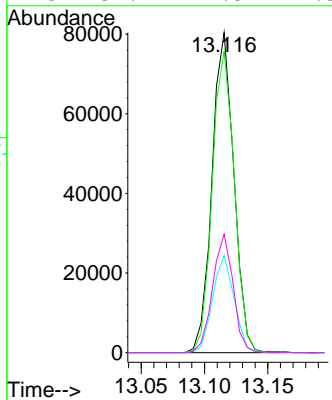


#69
 1,3,5-Trichlorobenzene
 Concen: 58.129 ug/L
 RT: 13.116 min Scan# 1973
 Delta R.T. 0.000 min
 Lab File: VX025090.D
 Acq: 08 Nov 2021 10:13

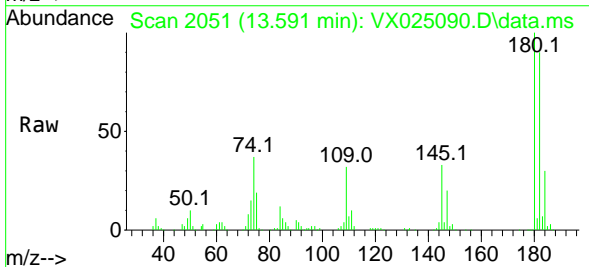
Instrument : MSVOA_X
 ClientSampleId : VSTD050626



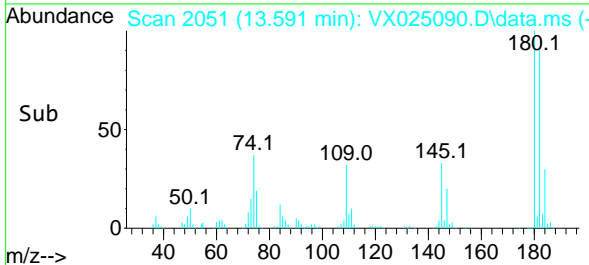
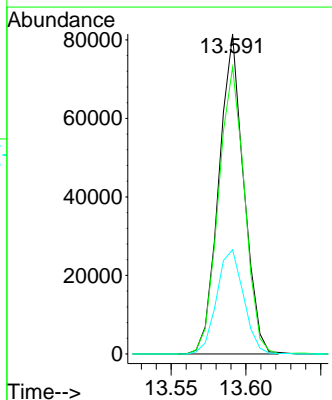
Tgt Ion:180 Resp: 96442
 Ion Ratio Lower Upper
 180 100
 182 94.9 74.2 111.4
 184 29.9 23.7 35.5
 145 34.9 27.5 41.3

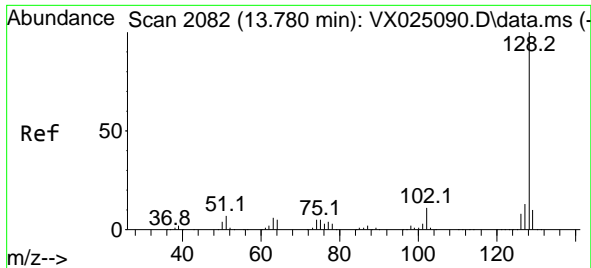


#70
 1,2,4-trichlorobenzene
 Concen: 65.108 ug/L
 RT: 13.591 min Scan# 2051
 Delta R.T. 0.000 min
 Lab File: VX025090.D
 Acq: 08 Nov 2021 10:13



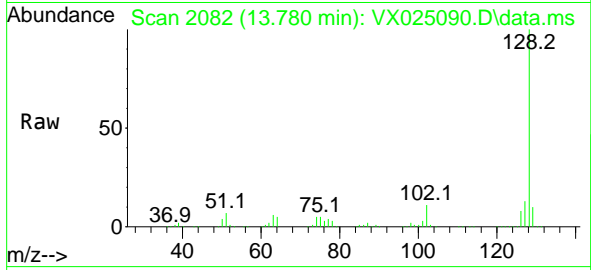
Tgt Ion:180 Resp: 94339
 Ion Ratio Lower Upper
 180 100
 182 93.5 76.4 114.6
 145 35.0 28.8 43.2



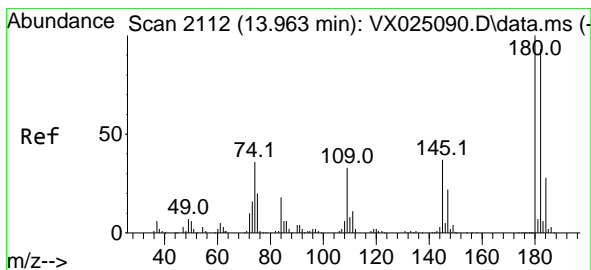
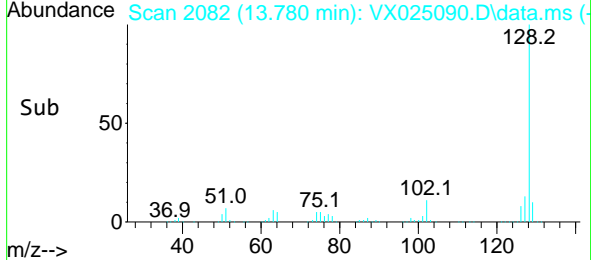
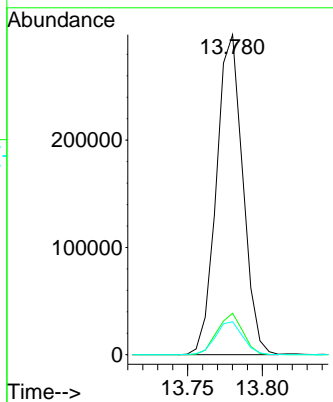


#71
 Naphthalene
 Concen: 71.645 ug/L
 RT: 13.780 min Scan# 2082
 Delta R.T. 0.000 min
 Lab File: VX025090.D
 Acq: 08 Nov 2021 10:13

Instrument :
 MSVOA_X
 ClientSampleId :
 VSTD050626



Tgt Ion:128 Resp: 365910
 Ion Ratio Lower Upper
 128 100
 127 12.6 10.6 15.8
 129 10.7 9.1 13.7



#72
 1,2,3-Trichlorobenzene
 Concen: 65.300 ug/L
 RT: 13.963 min Scan# 2112
 Delta R.T. 0.000 min
 Lab File: VX025090.D
 Acq: 08 Nov 2021 10:13

Tgt Ion:180 Resp: 97197
 Ion Ratio Lower Upper
 180 100
 182 95.8 73.3 109.9
 145 38.3 29.0 43.4

