

Data Path : Z:\voasrv\HPCHEM1\MSVOA\_X\Data\VX110823\  
 Data File : VX038654.D  
 Acq On : 08 Nov 2023 14:31  
 Operator : JC/MD  
 Sample : 05222-02  
 Misc : 5.0mL/MSVOA\_X/WATER  
 ALS Vial : 14 Sample Multiplier: 1

Instrument :  
 MSVOA\_X  
 ClientSampleId :  
 FSND-RB-2-20231031

Quant Time: Nov 09 01:20:11 2023  
 Quant Method : Z:\voasrv\HPCHEM1\MSVOA\_X\Method\82X110723W.M  
 Quant Title : SW846 8260  
 QLast Update : Wed Nov 08 03:19:07 2023  
 Response via : Initial Calibration

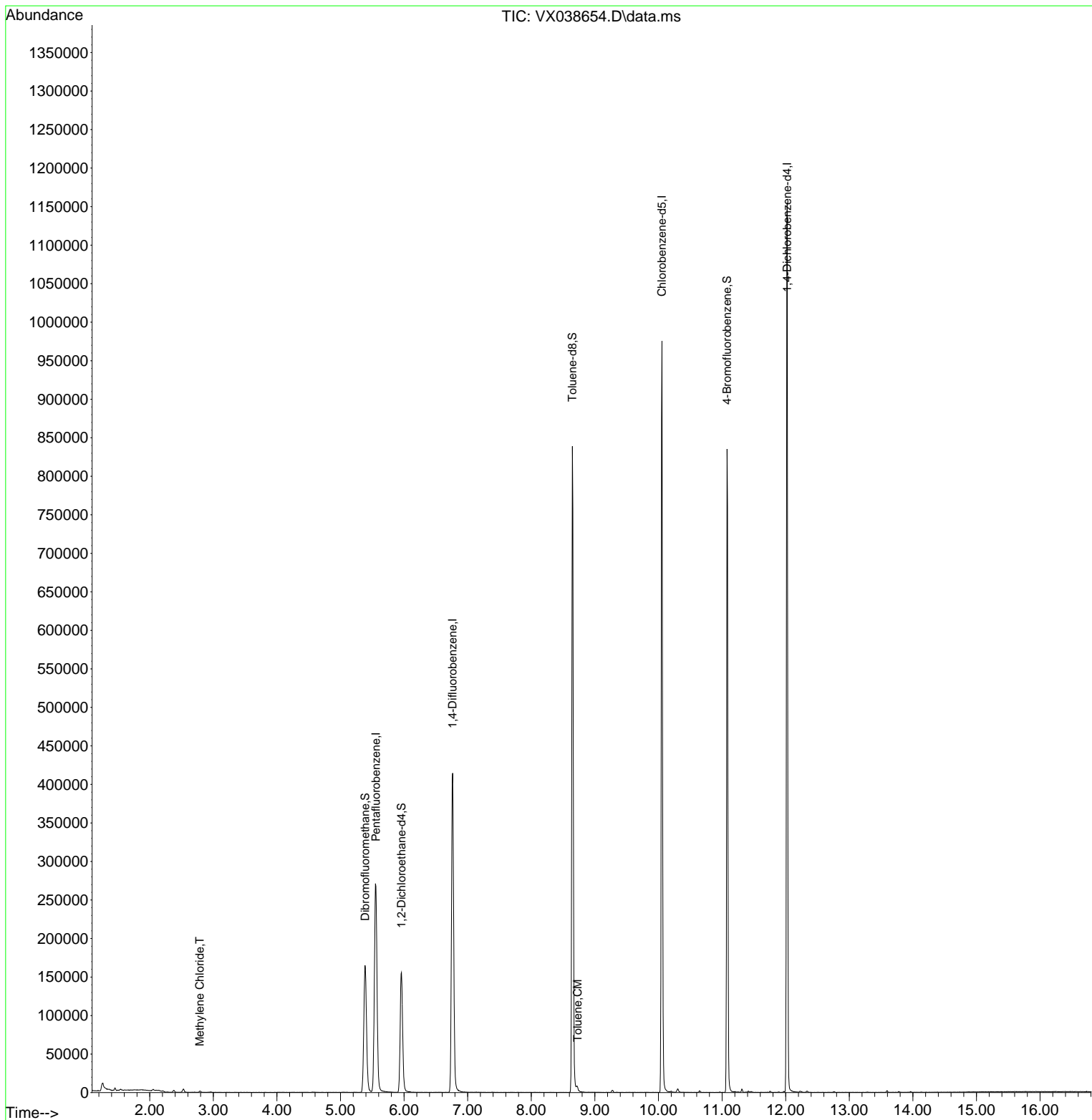
Compound	R.T.	QIon	Response	Conc	Units	Dev(Min)
-----						
Internal Standards						
1) Pentafluorobenzene	5.556	168	282268	50.000	ug/l	# 0.00
34) 1,4-Difluorobenzene	6.763	114	465893	50.000	ug/l	0.00
63) Chlorobenzene-d5	10.055	117	468990	50.000	ug/l	0.00
72) 1,4-Dichlorobenzene-d4	12.024	152	268210	50.000	ug/l	0.00
System Monitoring Compounds						
33) 1,2-Dichloroethane-d4	5.958	65	158643	45.144	ug/l	0.00
Spiked Amount	50.000	Range	78 - 117	Recovery	=	90.280%
35) Dibromofluoromethane	5.385	113	147524	43.965	ug/l	0.00
Spiked Amount	50.000	Range	75 - 124	Recovery	=	87.920%
50) Toluene-d8	8.647	98	531606	44.274	ug/l	0.00
Spiked Amount	50.000	Range	92 - 112	Recovery	=	88.540%#
62) 4-Bromofluorobenzene	11.079	95	226420	48.636	ug/l	0.00
Spiked Amount	50.000	Range	83 - 123	Recovery	=	97.280%
Target Compounds						
						Qvalue
20) Methylene Chloride	2.788	84	897	0.301	ug/l	# 75
52) Toluene	8.726	92	2189	0.278	ug/l	96
-----						

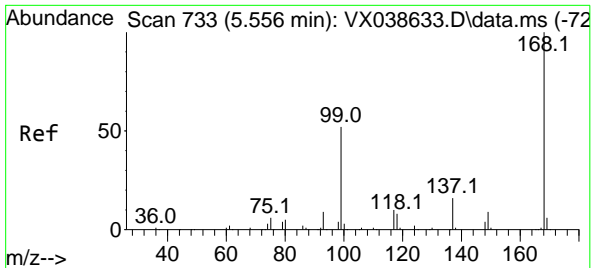
(#) = qualifier out of range (m) = manual integration (+) = signals summed

Data Path : Z:\voasrv\HPCHEM1\MSVOA\_X\Data\VX110823\  
 Data File : VX038654.D  
 Acq On : 08 Nov 2023 14:31  
 Operator : JC/MD  
 Sample : 05222-02  
 Misc : 5.0mL/MSVOA\_X/WATER  
 ALS Vial : 14 Sample Multiplier: 1

Instrument :  
 MSVOA\_X  
 ClientSampleId :  
 FSND-RB-2-20231031

Quant Time: Nov 09 01:20:11 2023  
 Quant Method : Z:\voasrv\HPCHEM1\MSVOA\_X\Method\82X110723W.M  
 Quant Title : SW846 8260  
 QLast Update : Wed Nov 08 03:19:07 2023  
 Response via : Initial Calibration

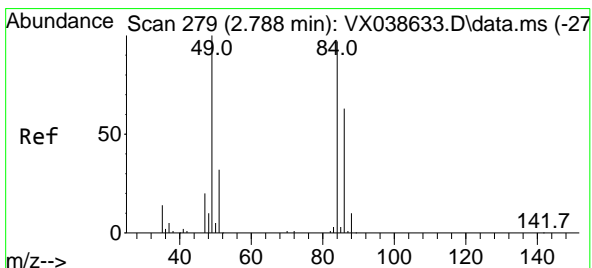
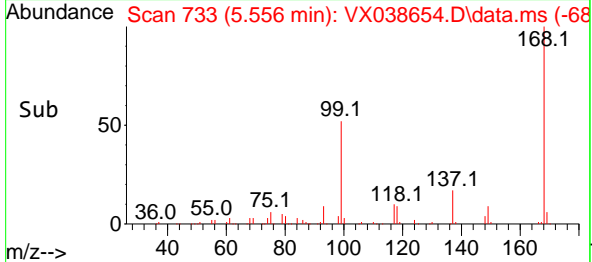
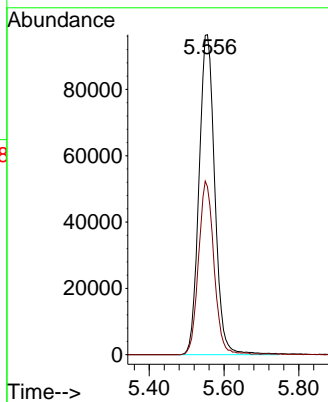
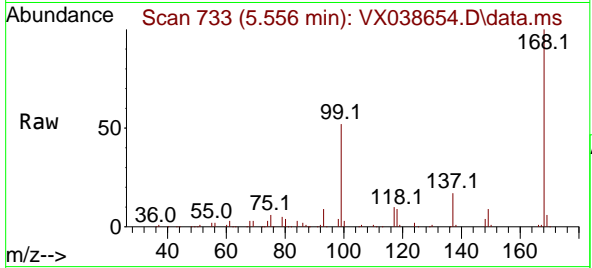




#1  
 Pentafluorobenzene  
 Concen: 50.000 ug/l  
 RT: 5.556 min Scan# 71  
 Delta R.T. -0.000 min  
 Lab File: VX038654.D  
 Acq: 08 Nov 2023 14:31

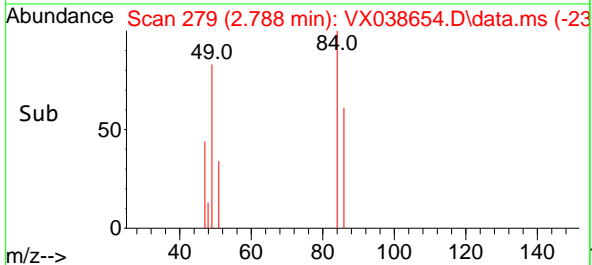
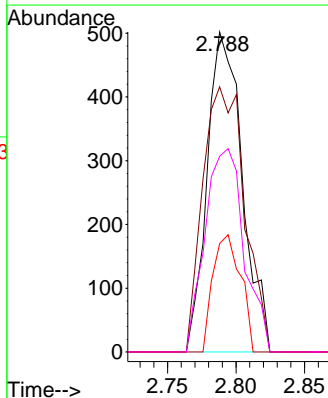
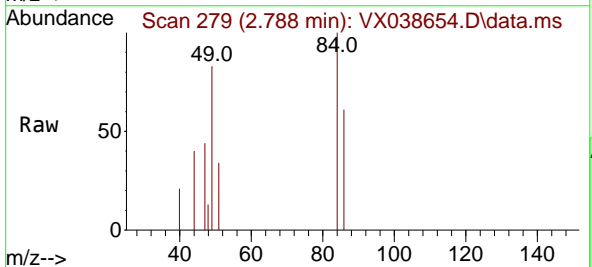
Instrument : MSVOA\_X  
 ClientSampleId : FSND-RB-2-20231031

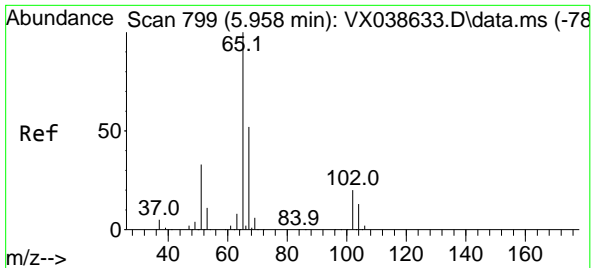
Tgt Ion:168 Resp: 282268  
 Ion Ratio Lower Upper  
 168 100  
 99 52.4 56.6 85.0#



#20  
 Methylene Chloride  
 Concen: 0.301 ug/l  
 RT: 2.788 min Scan# 279  
 Delta R.T. 0.000 min  
 Lab File: VX038654.D  
 Acq: 08 Nov 2023 14:31

Tgt Ion: 84 Resp: 897  
 Ion Ratio Lower Upper  
 84 100  
 49 82.9 103.6 155.4#  
 51 33.9 33.8 50.6  
 86 61.2 49.4 74.0

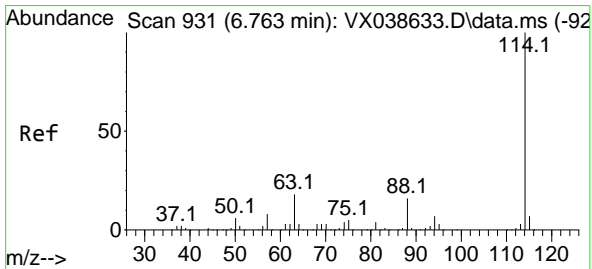
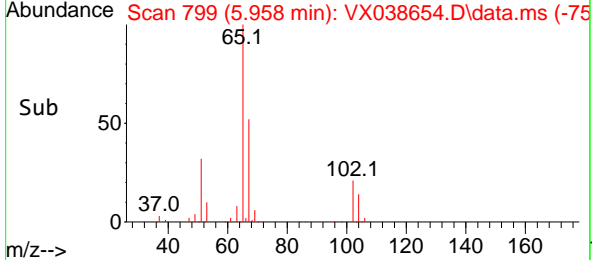
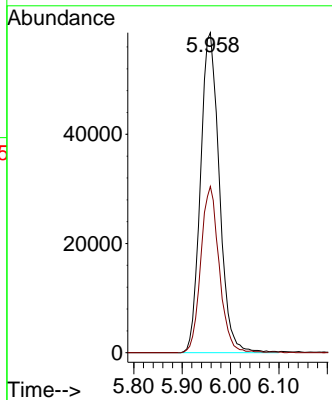
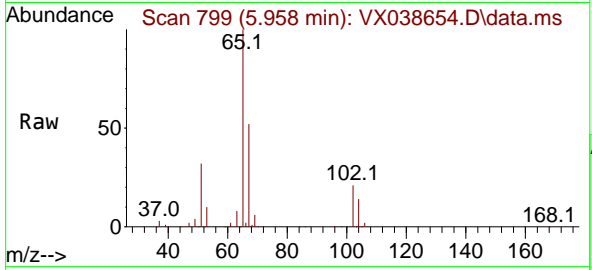




#33  
 1,2-Dichloroethane-d4  
 Concen: 45.144 ug/l  
 RT: 5.958 min Scan# 799  
 Delta R.T. 0.000 min  
 Lab File: VX038654.D  
 Acq: 08 Nov 2023 14:31

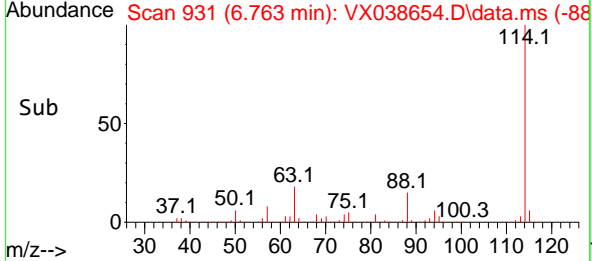
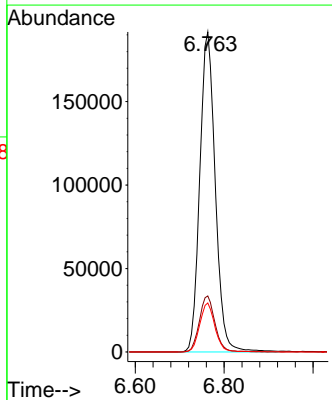
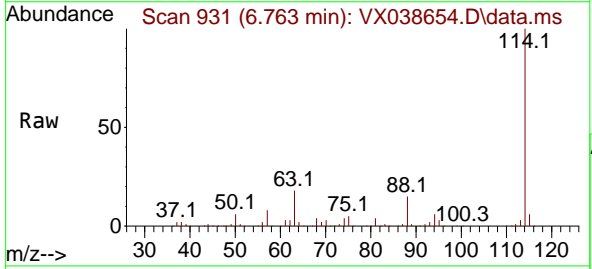
Instrument : MSVOA\_X  
 ClientSampleId : FSND-RB-2-20231031

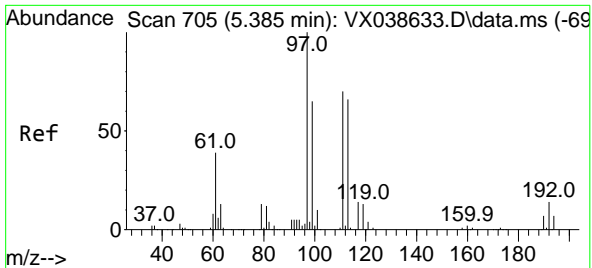
Tgt Ion: 65 Resp: 158643  
 Ion Ratio Lower Upper  
 65 100  
 67 50.7 0.0 100.2



#34  
 1,4-Difluorobenzene  
 Concen: 50.000 ug/l  
 RT: 6.763 min Scan# 931  
 Delta R.T. 0.000 min  
 Lab File: VX038654.D  
 Acq: 08 Nov 2023 14:31

Tgt Ion:114 Resp: 465893  
 Ion Ratio Lower Upper  
 114 100  
 63 17.5 0.0 45.0  
 88 15.3 0.0 36.6

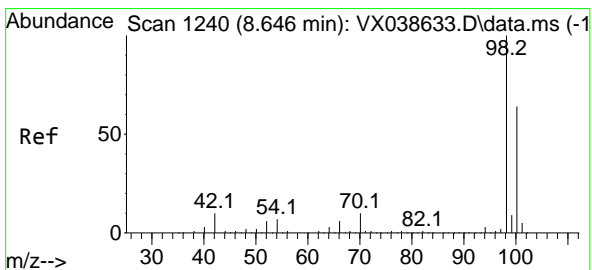
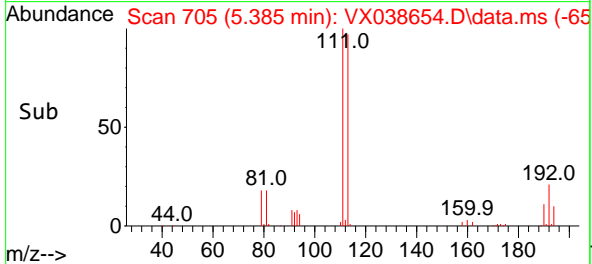
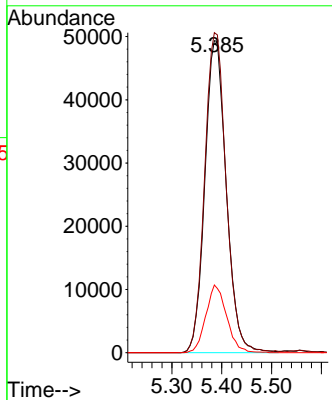
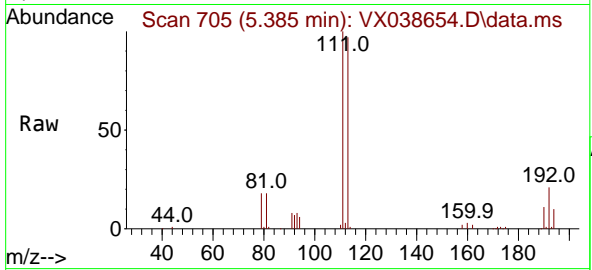




#35  
 Dibromofluoromethane  
 Concen: 43.965 ug/l  
 RT: 5.385 min Scan# 705  
 Delta R.T. 0.000 min  
 Lab File: VX038654.D  
 Acq: 08 Nov 2023 14:31

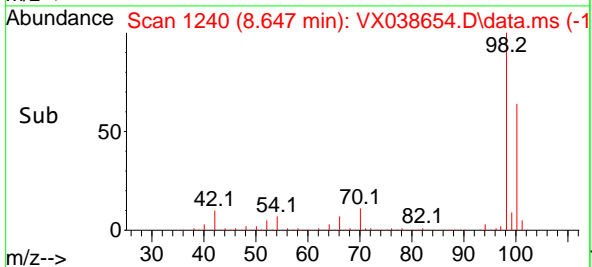
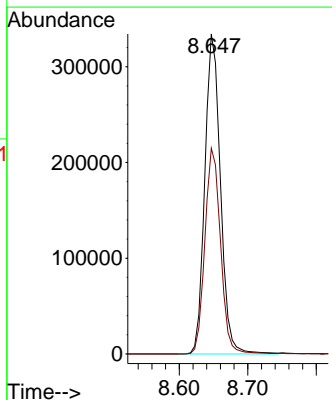
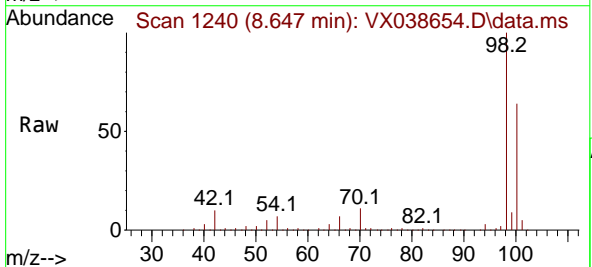
Instrument : MSVOA\_X  
 ClientSampleId : FSND-RB-2-20231031

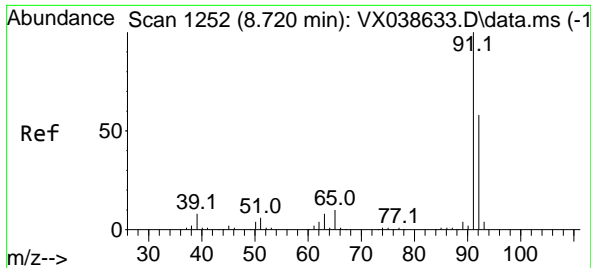
Tgt Ion: 113 Resp: 147524  
 Ion Ratio Lower Upper  
 113 100  
 111 102.8 82.9 124.3  
 192 21.0 13.3 19.9#



#50  
 Toluene-d8  
 Concen: 44.274 ug/l  
 RT: 8.647 min Scan# 1240  
 Delta R.T. 0.000 min  
 Lab File: VX038654.D  
 Acq: 08 Nov 2023 14:31

Tgt Ion: 98 Resp: 531606  
 Ion Ratio Lower Upper  
 98 100  
 100 64.4 53.1 79.7

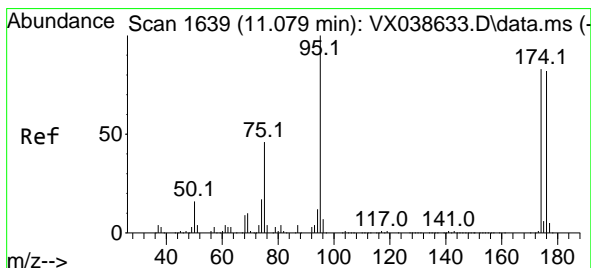
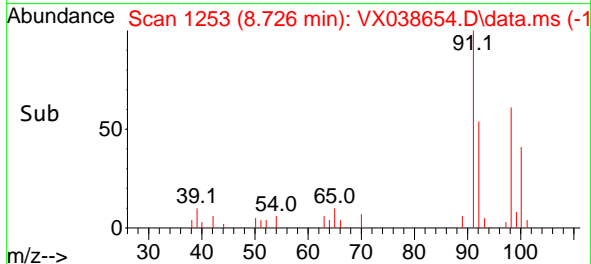
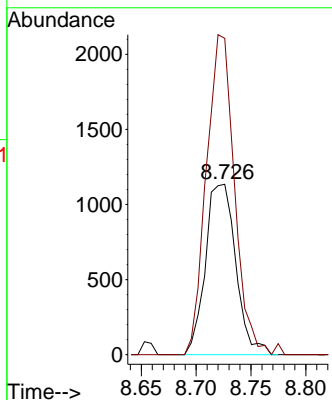
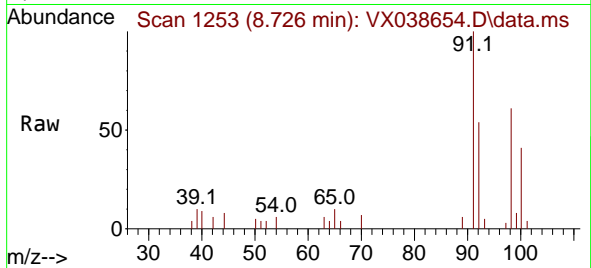




#52  
 Toluene  
 Concen: 0.278 ug/l  
 RT: 8.726 min Scan# 11  
 Delta R.T. 0.006 min  
 Lab File: VX038654.D  
 Acq: 08 Nov 2023 14:31

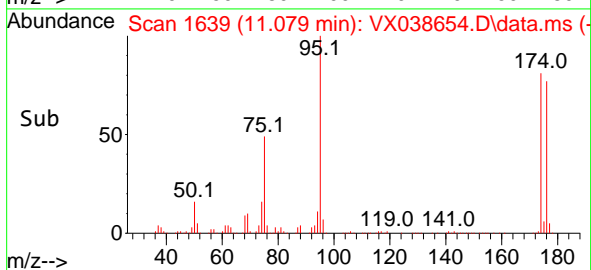
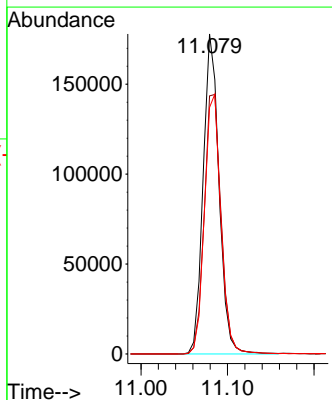
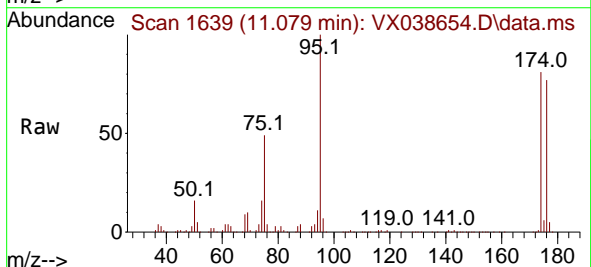
Instrument : MSVOA\_X  
 ClientSampleId : FSND-RB-2-20231031

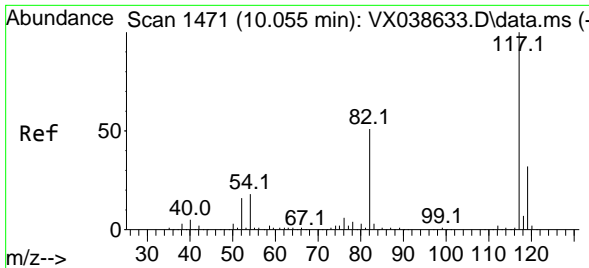
Tgt Ion: 92 Resp: 2189  
 Ion Ratio Lower Upper  
 92 100  
 91 173.2 134.2 201.2



#62  
 4-Bromofluorobenzene  
 Concen: 48.636 ug/l  
 RT: 11.079 min Scan# 1639  
 Delta R.T. 0.000 min  
 Lab File: VX038654.D  
 Acq: 08 Nov 2023 14:31

Tgt Ion: 95 Resp: 226420  
 Ion Ratio Lower Upper  
 95 100  
 174 86.7 0.0 135.6  
 176 84.4 0.0 131.0



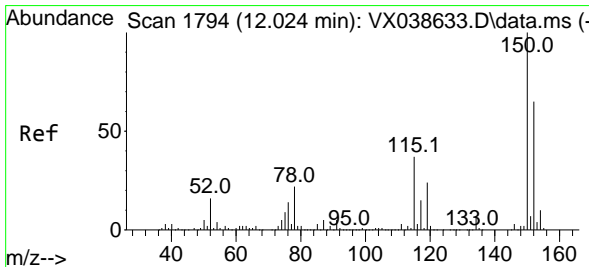
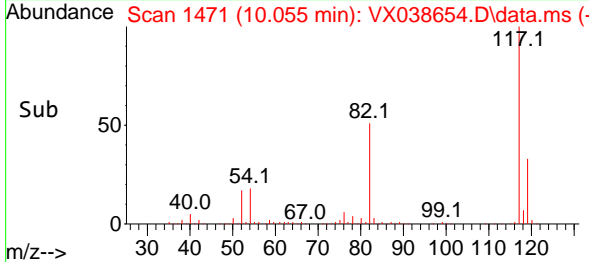
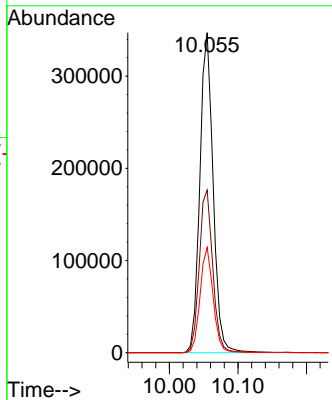
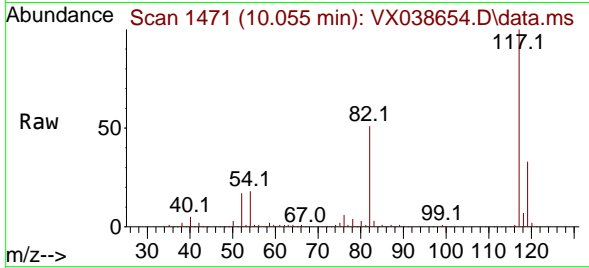


#63  
 Chlorobenzene-d5  
 Concen: 50.000 ug/l  
 RT: 10.055 min Scan# 1471  
 Delta R.T. 0.000 min  
 Lab File: VX038654.D  
 Acq: 08 Nov 2023 14:31

Instrument : MSVOA\_X  
 ClientSampleId : FSND-RB-2-20231031

Tgt Ion:117 Resp: 468990

Ion	Ratio	Lower	Upper
117	100		
82	50.8	46.2	69.4
119	32.9	25.5	38.3



#72  
 1,4-Dichlorobenzene-d4  
 Concen: 50.000 ug/l  
 RT: 12.024 min Scan# 1794  
 Delta R.T. 0.000 min  
 Lab File: VX038654.D  
 Acq: 08 Nov 2023 14:31

Tgt Ion:152 Resp: 268210

Ion	Ratio	Lower	Upper
152	100		
115	58.1	43.3	129.9
150	156.3	0.0	345.0

