

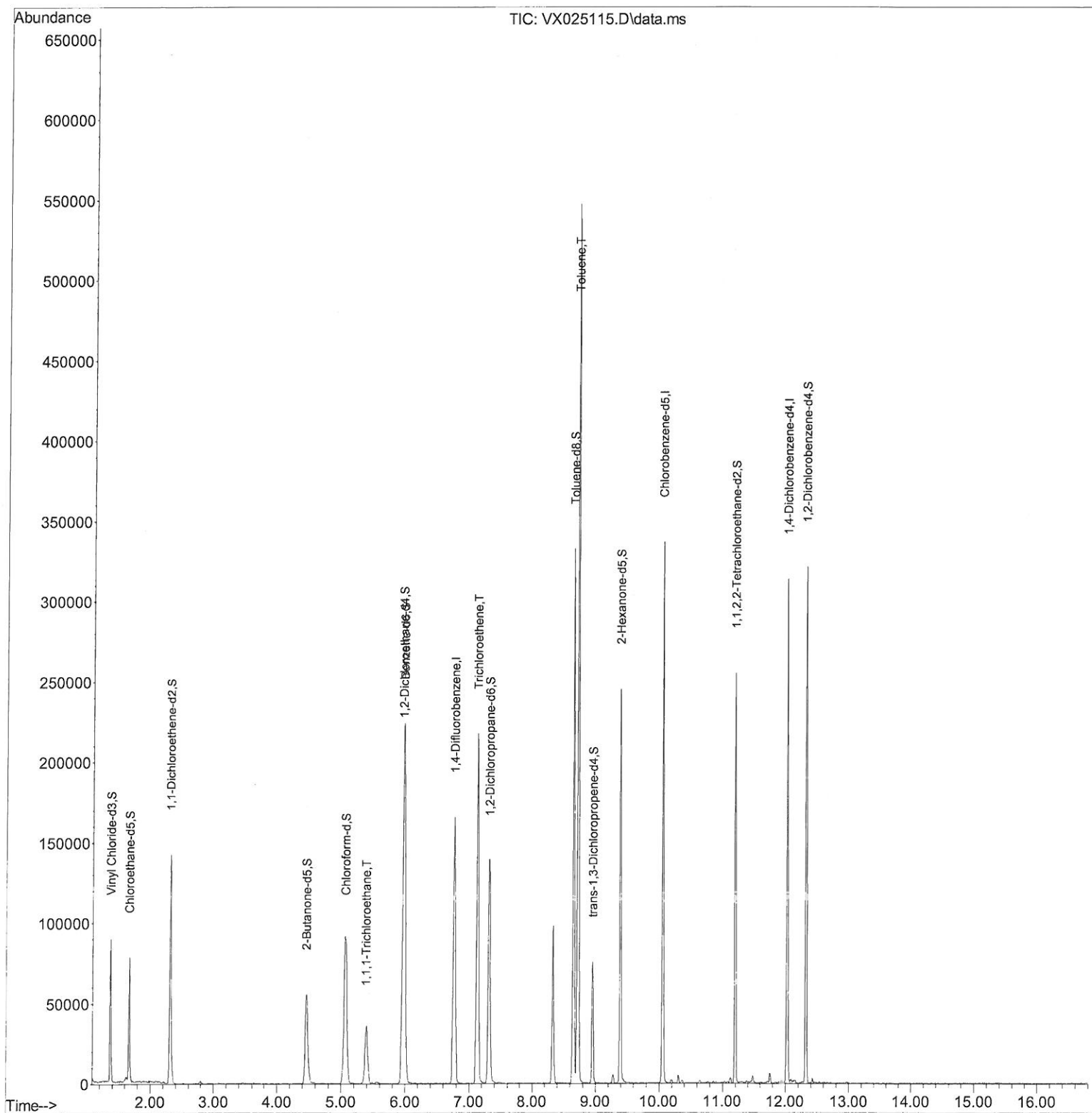
Data Path : Z:\voasrv\HPCHEM1\MSVOA_X\Data\VX110921\
Data File : VX025115.D
Acq On : 09 Nov 2021 12:31
Operator : JC/MD
Sample : M4464-07DL 1000X
Misc : 7.45g/5.0mL/100uL/5.0mL/MSVOA_X/MEOH
ALS Vial : 8 Sample Multiplier: 1

Instrument :
MSVOA_X
ClientSampleId :
GB7K5DL

Manual IntegrationsAPPROVED

Quant Time: Nov 10 02:52:04 2021
Quant Method : Z:\voasrv\HPCHEM1\MSVOA_X\Method\SFAMXML110821WMA.M
Quant Title : VOC Analysis
QLast Update : Wed Nov 10 02:50:07 2021
Response via : Initial Calibration

Reviewed By :John Carlone 11/10/2021
Supervised By :Mahesh Dadoda 11/10/2021



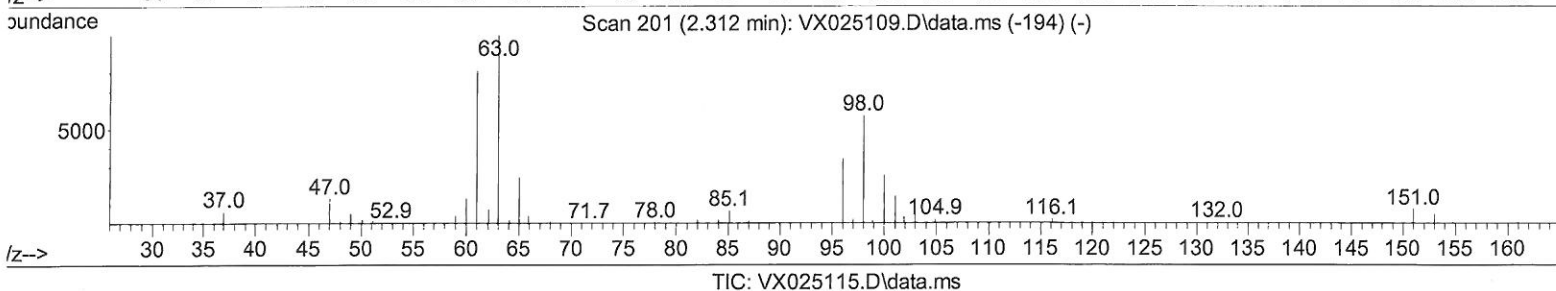
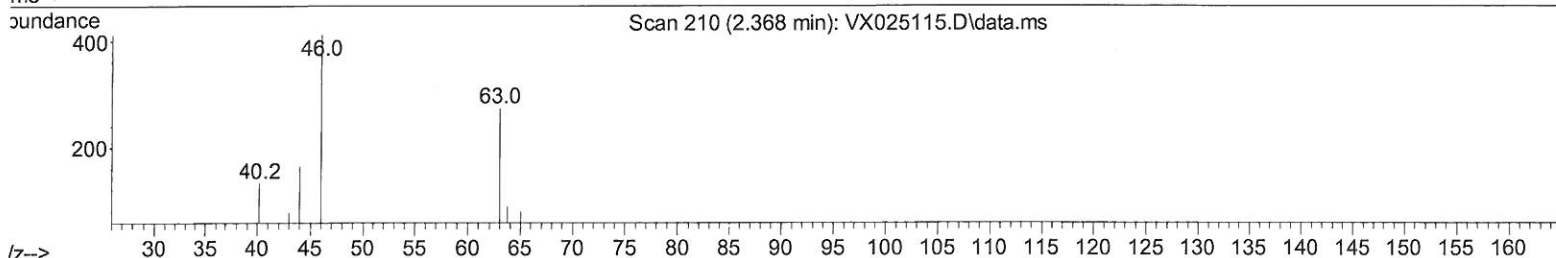
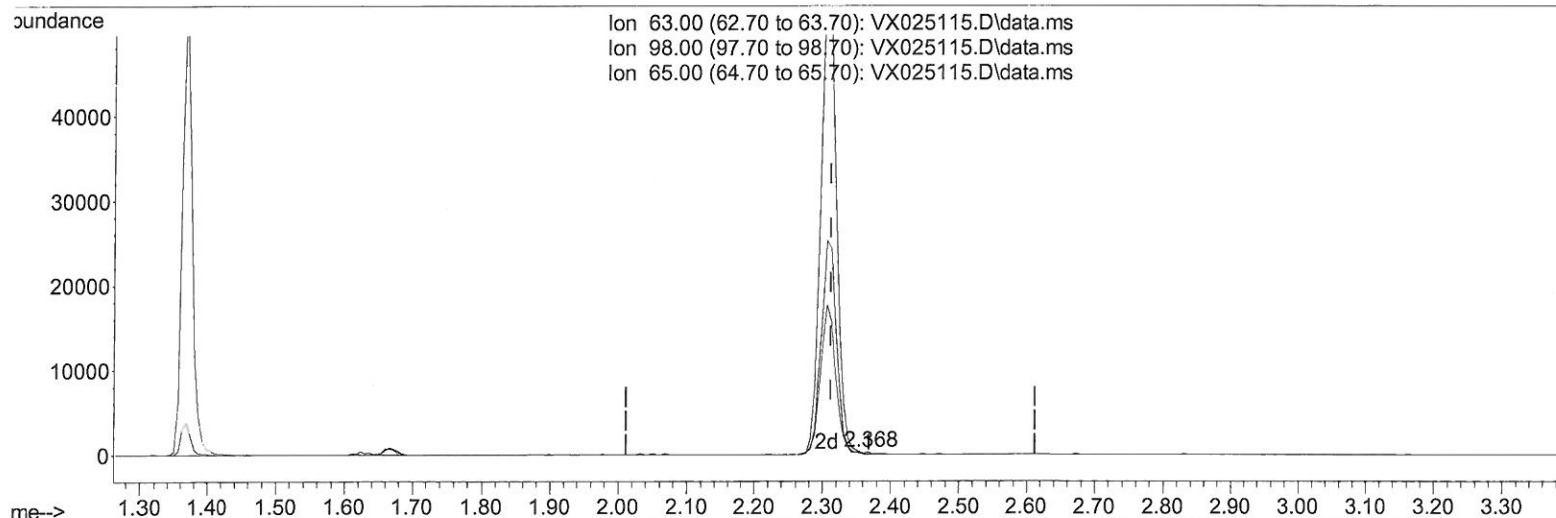
Data Path : Z:\voasrv\HPCHEM1\MSVOA_X\Data\VX110921\
 Data File : VX025115.D
 Acq On : 09 Nov 2021 12:31
 Operator : JC/MD
 Sample : M4464-07DL 1000X
 Misc : 7.45g/5.0mL/100uL/5.0mL/MSVOA_X/MEOH
 ALS Vial : 8 Sample Multiplier: 1

Instrument :
 MSVOA_X
 ClientSampleId :
 GB7K5DL

Manual IntegrationsAPPROVED

Quant Time: Nov 10 02:52:04 2021
 Quant Method : Z:\voasrv\HPCHEM1\MSVOA_X\Method\SFAMXML110821WMA.M
 Quant Title : VOC Analysis
 QLast Update : Wed Nov 10 02:50:07 2021
 Response via : Initial Calibration

Reviewed By :John Carlone 11/10/2021
 Supervised By :Mahesh Dadoda 11/10/2021



(11) 1,1-Dichloroethene-d2 (S)

2.368min (+ 0.055) 0.06 ug/L

response 141

Ion	Exp%	Act%
63.00	100.00	100.00
98.00	75.90	97.16
65.00	24.50	20.57
0.00	0.00	0.00

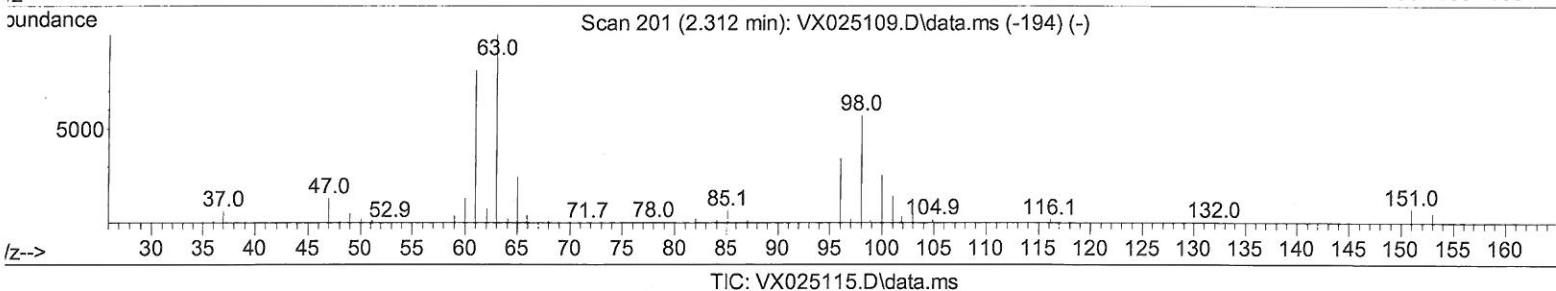
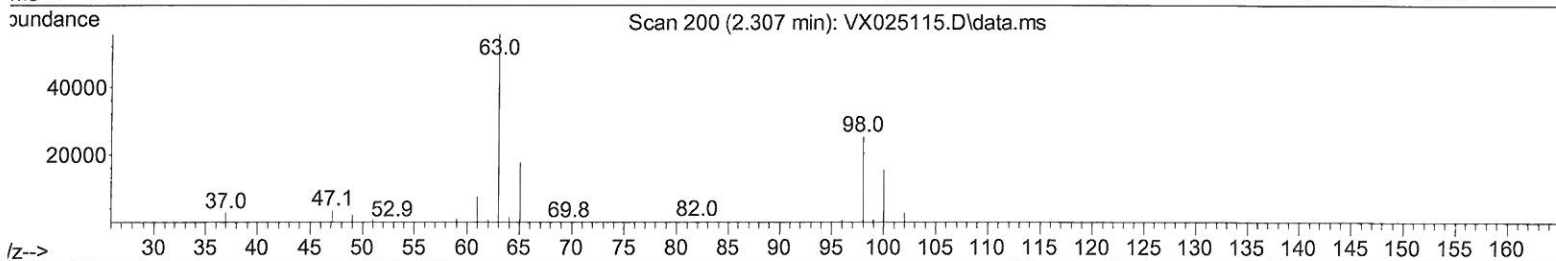
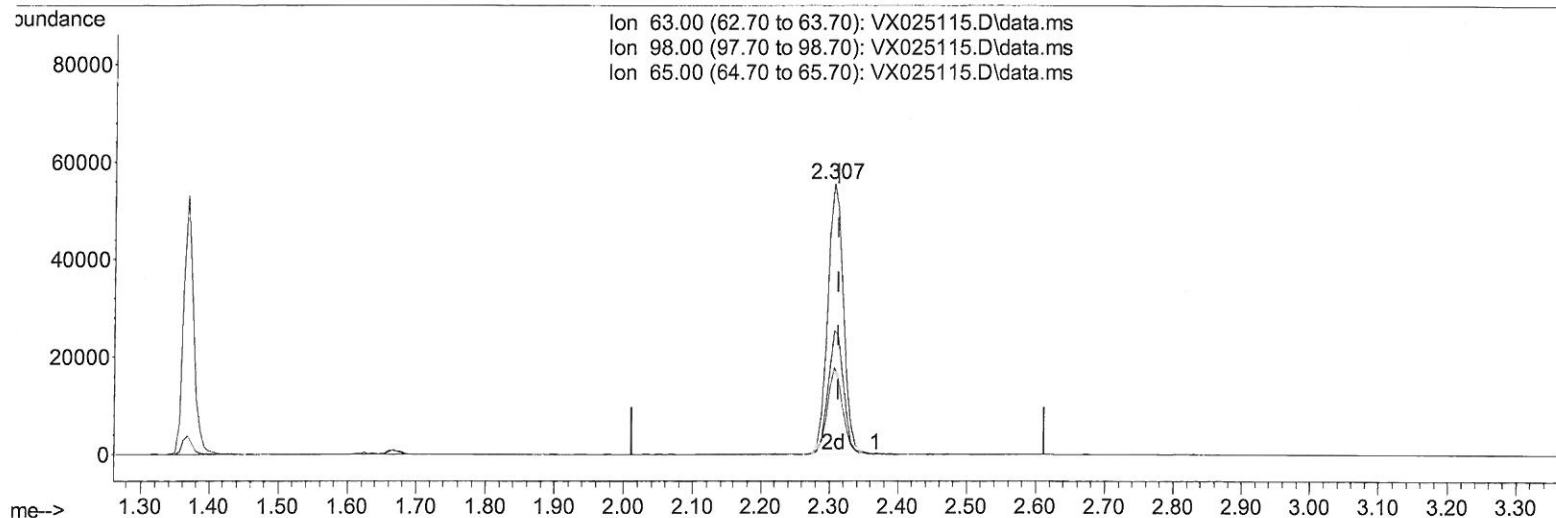
Data Path : Z:\voasrv\HPCHEM1\MSVOA_X\Data\VX110921\
 Data File : VX025115.D
 Acq On : 09 Nov 2021 12:31
 Operator : JC/MD
 Sample : M4464-07DL 1000X
 Misc : 7.45g/5.0mL/100uL/5.0mL/MSVOA_X/MEOH
 ALS Vial : 8 Sample Multiplier: 1

Instrument :
 MSVOA_X
 ClientSampleId :
 GB7K5DL

Manual IntegrationsAPPROVED

Quant Time: Nov 10 02:52:04 2021
 Quant Method : Z:\voasrv\HPCHEM1\MSVOA_X\Method\SFAMXML110821WMA.M
 Quant Title : VOC Analysis
 QLast Update : Wed Nov 10 02:50:07 2021
 Response via : Initial Calibration

Reviewed By :John Carlone 11/10/2021
 Supervised By :Mahesh Dadoda 11/10/2021



(11) 1,1-Dichloroethene-d2 (S)

2.307min (-0.006) 36.09 ug/L m

response 88053

Ion	Exp%	Act%
63.00	100.00	100.00
98.00	75.90	0.16#
65.00	24.50	0.03#
0.00	0.00	0.00

MD
 11/10/21

Data Path : Z:\voasrv\HPCHEM1\MSVOA_X\Data\VX110921\
 Data File : VX025115.D
 Acq On : 09 Nov 2021 12:31
 Operator : JC/MD
 Sample : M4464-07DL 1000X
 Misc : 7.45g/5.0mL/100uL/5.0mL/MSVOA_X/MEOH
 ALS Vial : 8 Sample Multiplier: 1

Instrument :
 MSVOA_X
 ClientSampleId :
 GB7K5DL

Manual IntegrationsAPPROVED

Reviewed By :John Carlone 11/10/2021
 Supervised By :Mahesh Dadoda 11/10/2021

Quant Time: Nov 10 02:52:04 2021
 Quant Method : Z:\voasrv\HPCHEM1\MSVOA_X\Method\SFAMXLM110821WMA.M
 Quant Title : VOC Analysis
 Last Update : Wed Nov 10 02:50:07 2021
 Response via : Initial Calibration

Compound	R.T.	QIon	Response	Conc	Units	Dev(Min)
Internal Standards						
1) 1,4-Difluorobenzene	6.769	114	140080	50.000	ug/L	# 0.00
28) Chlorobenzene-d5	10.055	117	127105	50.000	ug/L	0.00
58) 1,4-Dichlorobenzene-d4	12.024	152	52884	50.000	ug/L	0.00
System Monitoring Compounds						
4) Vinyl Chloride-d3	1.368	65	54815	43.276	ug/L	0.00
Spiked Amount 50.000	Range 60 - 135		Recovery =	86.560%		
7) Chloroethane-d5	1.666	69	46949	59.124	ug/L	0.00
Spiked Amount 50.000	Range 70 - 130		Recovery =	118.240%		
11) 1,1-Dichloroethene-d2	2.307	63	88053m	36.091	ug/L	0.00
Spiked Amount 50.000	Range 60 - 125		Recovery =	72.180%		
21) 2-Butanone-d5	4.465	46	96378	110.714	ug/L	0.00
Spiked Amount 100.000	Range 40 - 130		Recovery =	110.710%		
24) Chloroform-d	5.068	84	112272	45.086	ug/L	0.00
Spiked Amount 50.000	Range 70 - 125		Recovery =	90.180%		
26) 1,2-Dichloroethane-d4	5.964	65	85547	52.514	ug/L	0.00
Spiked Amount 50.000	Range 70 - 125		Recovery =	105.020%		
32) Benzene-d6	5.977	84	189295	41.828	ug/L	0.00
Spiked Amount 50.000	Range 70 - 125		Recovery =	83.660%		
36) 1,2-Dichloropropane-d6	7.318	67	63831	47.866	ug/L	0.00
Spiked Amount 50.000	Range 70 - 120		Recovery =	95.740%		
41) Toluene-d8	8.653	98	178300	46.868	ug/L	0.00
Spiked Amount 50.000	Range 80 - 120		Recovery =	93.740%		
43) trans-1,3-Dichloroprop...	8.952	79	33488	47.051	ug/L	0.00
Spiked Amount 50.000	Range 60 - 125		Recovery =	94.100%		
47) 2-Hexanone-d5	9.385	63	66848	117.355	ug/L	0.00
Spiked Amount 100.000	Range 45 - 130		Recovery =	117.360%		
56) 1,1,2,2-Tetrachloroeth...	11.195	84	87681	47.501	ug/L	0.00
Spiked Amount 50.000	Range 65 - 120		Recovery =	95.000%		
66) 1,2-Dichlorobenzene-d4	12.323	152	50662	48.875	ug/L	0.00
Spiked Amount 50.000	Range 80 - 120		Recovery =	97.740%		
Target Compounds						
30) 1,1,1-Trichloroethane	5.385	97	32399	14.071	ug/L #	86
34) Trichloroethene	7.129	95	82654	67.846	ug/L	93
42) Toluene	8.720	91	329639	72.398	ug/L	100

(#) = qualifier out of range (m) = manual integration (+) = signals summed