

Data Path : Z:\voasrv\HPCHEM1\MSVOA\_X\Data\VX110921\  
 Data File : VX025121.D  
 Acq On : 09 Nov 2021 14:57  
 Operator : JC/MD  
 Sample : M4543-01 10X  
 Misc : 5.0mL/MSVOA\_X/WATER  
 ALS Vial : 14 Sample Multiplier: 1

Instrument :  
 MSVOA\_X  
 ClientSampleId :  
 COU17

Integration Parameters: LSCINT.P

Integrator: RTE  
 Smoothing : OFF Filtering: 5  
 Sampling : 1 Min Area: 0 % of largest Peak  
 Start Thrs: 0.2 Max Peaks: 100  
 Stop Thrs : 0 Peak Location: TOP

If leading or trailing edge < 100 prefer < Baseline drop else tangent >  
 Peak separation: 5

Method : Z:\voasrv\HPCHEM1\MSVOA\_X\Method\SFAMXLM110821WMA.M  
 Title : VOC Analysis

Signal : TIC: VX025121.D\data.ms

peak #	R.T. min	first scan	max scan	last scan	PK TY	peak height	corr. area	corr. % max.	% of total
1	1.368	42	46	52	rBV	92920	91138	14.19%	1.769%
2	1.666	92	95	103	rVB	76944	94854	14.77%	1.842%
3	2.306	194	200	215	rBV	133647	223667	34.82%	4.342%
4	2.483	227	229	230	rBV	772	527	0.08%	0.010%
5	2.794	275	280	285	rVB3	2745	4703	0.73%	0.091%
6	2.965	307	308	310	rBV	435	310	0.05%	0.006%
7	3.081	323	327	328	rBV	454	567	0.09%	0.011%
8	3.331	364	368	370	rBV	540	453	0.07%	0.009%
9	3.379	375	376	379	rVB	457	386	0.06%	0.007%
10	3.428	380	384	386	rBV	280	419	0.07%	0.008%
11	3.733	432	434	436	rBV2	319	249	0.04%	0.005%
12	3.824	448	449	452	rBV	322	370	0.06%	0.007%
13	3.971	472	473	476	rBV	400	281	0.04%	0.005%
14	4.087	489	492	495	rBV	313	454	0.07%	0.009%
15	4.196	509	510	512	rBV	270	276	0.04%	0.005%
16	4.245	516	518	523	rVB	348	428	0.07%	0.008%
17	4.318	527	530	531	rBV2	463	341	0.05%	0.007%
18	4.465	546	554	573	rVB2	53598	167735	26.11%	3.256%
19	4.696	590	592	595	rBV2	429	481	0.07%	0.009%
20	4.733	595	598	601	rVV	396	535	0.08%	0.010%
21	4.818	610	612	614	rVB	658	443	0.07%	0.009%
22	4.836	614	615	617	rBV	492	470	0.07%	0.009%
23	4.885	620	623	624	rBV	476	366	0.06%	0.007%
24	4.916	626	628	630	rVB	384	328	0.05%	0.006%
25	5.068	640	653	666	rBV	88160	274487	42.73%	5.329%
26	5.184	670	672	674	rVB	474	292	0.05%	0.006%
27	5.489	721	722	725	rBV2	432	443	0.07%	0.009%
28	5.592	736	739	741	rBV	493	358	0.06%	0.007%
29	5.666	747	751	752	rVB	239	270	0.04%	0.005%
30	5.684	752	754	755	rBV	457	298	0.05%	0.006%
31	5.751	763	765	768	rBV	543	503	0.08%	0.010%
32	5.970	790	801	818	rVB3	209533	642390	100.00%	12.472%
33	6.159	830	832	833	rVB3	440	246	0.04%	0.005%
34	6.281	844	852	855	rVB2	462	938	0.15%	0.018%
35	6.446	877	879	881	rBV	437	418	0.07%	0.008%
36	6.653	910	913	916	rVB	388	467	0.07%	0.009%

Data Path : Z:\voasrv\HPCHEM1\MSVOA\_X\Data\VX110921\  
 Data File : VX025121.D  
 Acq On : 09 Nov 2021 14:57  
 Operator : JC/MD  
 Sample : M4543-01 10X  
 Misc : 5.0mL/MSVOA\_X/WATER  
 ALS Vial : 14 Sample Multiplier: 1

Instrument :  
 MSVOA\_X  
 ClientSampleId :  
 COU17

Integration Parameters: LSCINT.P

Integrator: RTE  
 Smoothing : OFF  
 Sampling : 1  
 Start Thrs: 0.2  
 Stop Thrs : 0

Filtering: 5  
 Min Area: 0 % of largest Peak  
 Max Peaks: 100  
 Peak Location: TOP

If leading or trailing edge < 100 prefer < Baseline drop else tangent >  
 Peak separation: 5

Method : Z:\voasrv\HPCHEM1\MSVOA\_X\Method\SFAMXML110821WMA.M  
 Title : VOC Analysis

37	6.763	922	931	943	rVV	163948	387734	60.36%	7.528%
38	6.879	948	950	953	rVB	601	518	0.08%	0.010%
39	6.915	953	956	957	rBV	394	294	0.05%	0.006%
40	7.129	983	991	1003	rVB5	31390	71208	11.08%	1.382%
41	7.312	1013	1021	1041	rVB	138710	299345	46.60%	5.812%
42	7.744	1089	1092	1096	rBV	688	812	0.13%	0.016%
43	7.927	1120	1122	1126	rVB3	751	859	0.13%	0.017%
44	8.000	1130	1134	1137	rBV3	358	614	0.10%	0.012%
45	8.189	1163	1165	1168	rBV2	279	309	0.05%	0.006%
46	8.275	1177	1179	1181	rVV	378	345	0.05%	0.007%
47	8.330	1181	1188	1197	rVV	92577	153808	23.94%	2.986%
48	8.476	1210	1212	1215	rBV2	698	621	0.10%	0.012%
49	8.574	1226	1228	1230	rBV	481	280	0.04%	0.005%
50	8.653	1234	1241	1249	rBV	312043	479476	74.64%	9.309%
51	8.952	1285	1290	1298	rVB	69874	105433	16.41%	2.047%
52	9.128	1317	1319	1322	rBV2	462	444	0.07%	0.009%
53	9.153	1322	1323	1326	rVB	397	305	0.05%	0.006%
54	9.177	1326	1327	1331	rBV	313	426	0.07%	0.008%
55	9.275	1337	1343	1354	rVB	188142	275067	42.82%	5.340%
56	9.384	1356	1361	1371	rBV	218650	314939	49.03%	6.114%
57	10.055	1466	1471	1484	rVB	345445	462832	72.05%	8.986%
58	10.244	1499	1502	1505	rBV	309	364	0.06%	0.007%
59	10.299	1508	1511	1515	rBV3	1285	1781	0.28%	0.035%
60	10.738	1579	1583	1584	rBV2	293	298	0.05%	0.006%
61	10.945	1616	1617	1619	rBV2	334	274	0.04%	0.005%
62	11.122	1642	1646	1650	rBV2	2575	3469	0.54%	0.067%
63	11.195	1653	1658	1666	rVV	230565	286027	44.53%	5.553%
64	11.280	1670	1672	1673	rBV	740	576	0.09%	0.011%
65	11.683	1735	1738	1739	rBV	351	349	0.05%	0.007%
66	11.750	1745	1749	1753	rBV4	1724	2193	0.34%	0.043%
67	11.841	1759	1764	1766	rBV	391	501	0.08%	0.010%
68	11.896	1772	1773	1776	rBV	262	289	0.04%	0.006%
69	11.939	1777	1780	1785	rVB2	1104	1227	0.19%	0.024%
70	12.024	1789	1794	1803	rBV	306740	386674	60.19%	7.507%
71	12.122	1808	1810	1813	rBV3	1299	1521	0.24%	0.030%
72	12.244	1826	1830	1836	rBV3	2012	2866	0.45%	0.056%
73	12.323	1838	1843	1853	rVB	302129	381619	59.41%	7.409%
74	12.597	1887	1888	1892	rVB	714	703	0.11%	0.014%
75	12.640	1892	1895	1897	rBV	757	891	0.14%	0.017%
76	13.024	1955	1958	1959	rBV	431	466	0.07%	0.009%

Data Path : Z:\voasrv\HPCHEM1\MSVOA\_X\Data\VX110921\  
 Data File : VX025121.D  
 Acq On : 09 Nov 2021 14:57  
 Operator : JC/MD  
 Sample : M4543-01 10X  
 Misc : 5.0mL/MSVOA\_X/WATER  
 ALS Vial : 14 Sample Multiplier: 1

Instrument :  
 MSVOA\_X  
 ClientSampleId :  
 COU17

Integration Parameters: LSCINT.P  
 Integrator: RTE  
 Smoothing : OFF  
 Sampling : 1  
 Start Thrs: 0.2  
 Stop Thrs : 0  
 Filtering: 5  
 Min Area: 0 % of largest Peak  
 Max Peaks: 100  
 Peak Location: TOP

If leading or trailing edge < 100 prefer < Baseline drop else tangent >  
 Peak separation: 5

Method : Z:\voasrv\HPCHEM1\MSVOA\_X\Method\SFAMXML110821WMA.M  
 Title : VOC Analysis

77	13.115	1971	1973	1975	rBV2	417	381	0.06%	0.007%
78	13.152	1978	1979	1981	rVB	550	340	0.05%	0.007%
79	13.298	1999	2003	2007	rBV2	818	1387	0.22%	0.027%
80	13.493	2032	2035	2036	rVB2	408	300	0.05%	0.006%
81	13.585	2048	2050	2053	rBV2	567	498	0.08%	0.010%
82	14.219	2153	2154	2159	rBV2	424	570	0.09%	0.011%
83	14.268	2159	2162	2165	rVV	255	365	0.06%	0.007%
84	14.292	2165	2166	2170	rVB2	405	430	0.07%	0.008%
85	14.335	2170	2173	2175	rBV	439	404	0.06%	0.008%
86	14.377	2178	2180	2181	rVB	445	283	0.04%	0.005%
87	14.792	2245	2248	2252	rBV	588	802	0.12%	0.016%
88	14.993	2279	2281	2283	rBV	406	391	0.06%	0.008%
89	15.078	2291	2295	2296	rBV2	489	542	0.08%	0.011%
90	15.146	2304	2306	2308	rBV2	316	331	0.05%	0.006%
91	15.231	2318	2320	2322	rBV	433	439	0.07%	0.009%
92	15.456	2354	2357	2358	rBV	532	390	0.06%	0.008%
93	15.584	2376	2378	2379	rBV	340	256	0.04%	0.005%
94	15.603	2379	2381	2384	rVV	645	619	0.10%	0.012%
95	15.639	2384	2387	2389	rVV2	598	474	0.07%	0.009%
96	15.670	2391	2392	2395	rBV2	636	697	0.11%	0.014%
97	15.786	2409	2411	2414	rBV2	606	690	0.11%	0.013%
98	16.170	2472	2474	2475	rBV	584	403	0.06%	0.008%
99	16.255	2487	2488	2493	rBV	445	660	0.10%	0.013%
100	16.353	2503	2504	2508	rBV2	614	476	0.07%	0.009%

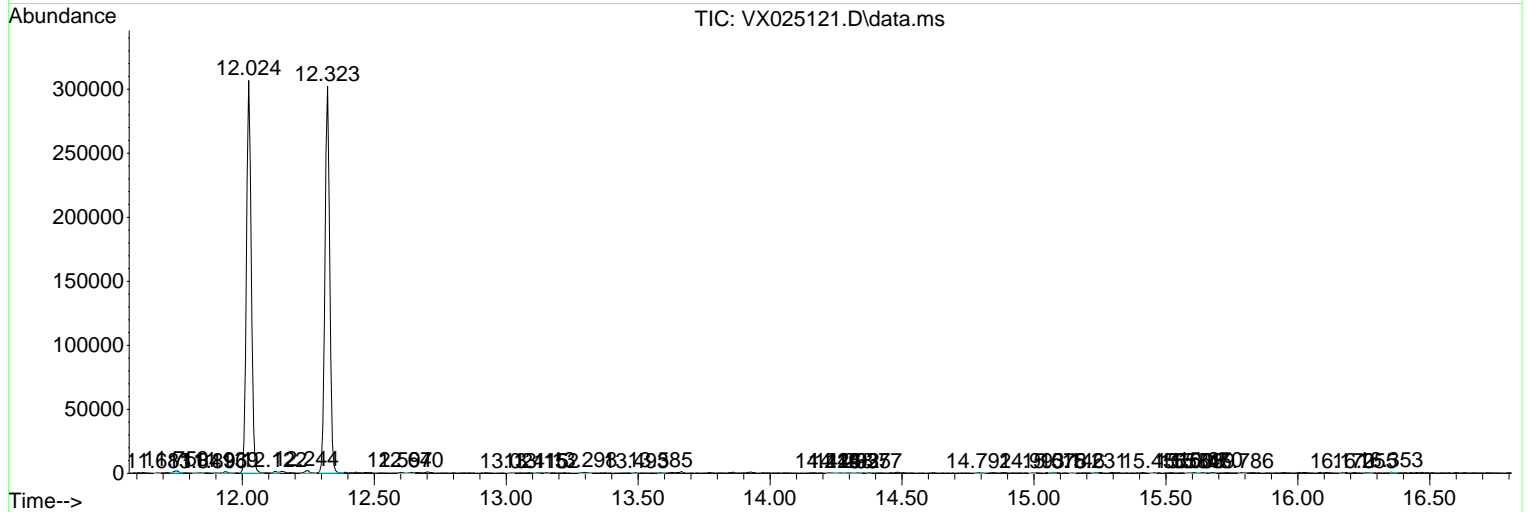
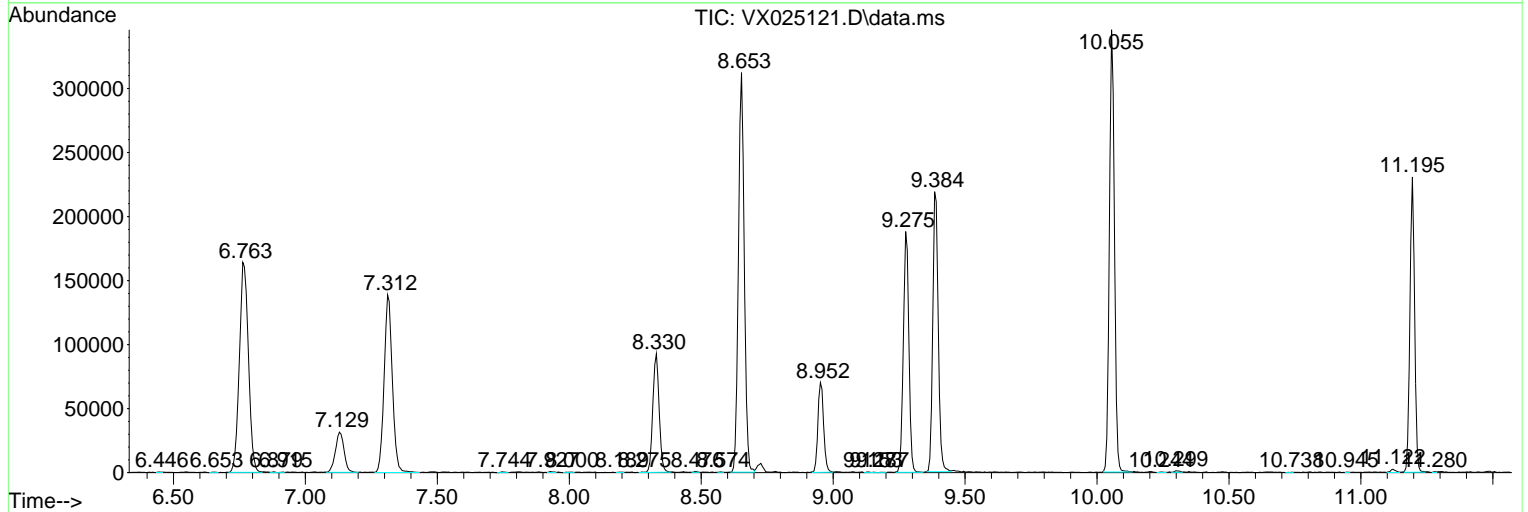
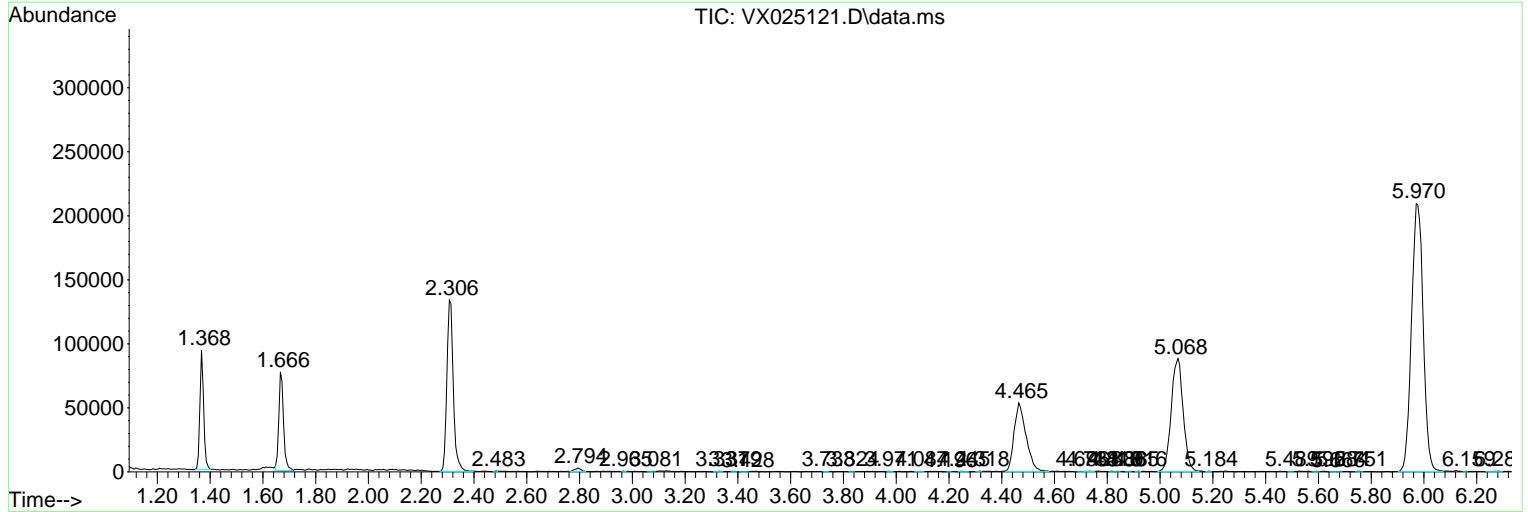
Sum of corrected areas: 5150776

Data Path : Z:\voasrv\HPCHEM1\MSVOA\_X\Data\VX110921\  
 Data File : VX025121.D  
 Acq On : 09 Nov 2021 14:57  
 Operator : JC/MD  
 Sample : M4543-01 10X  
 Misc : 5.0mL/MSVOA\_X/WATER  
 ALS Vial : 14 Sample Multiplier: 1

Instrument :  
 MSVOA\_X  
 ClientSampleId :  
 C0U17

Quant Method : Z:\voasrv\HPCHEM1\MSVOA\_X\Method\SFAMXLM110821WMA.M  
 Quant Title : VOC Analysis

TIC Library : C:\Database\NIST0.L  
 TIC Integration Parameters: LSCINT.P



Data Path : Z:\voasrv\HPCHEM1\MSVOA\_X\Data\VX110921\  
Data File : VX025121.D  
Acq On : 09 Nov 2021 14:57  
Operator : JC/MD  
Sample : M4543-01 10X  
Misc : 5.0mL/MSVOA\_X/WATER  
ALS Vial : 14 Sample Multiplier: 1

Instrument :  
MSVOA\_X  
ClientSampleId :  
C0U17

Quant Method : Z:\voasrv\HPCHEM1\MSVOA\_X\Method\SFAMXLM110821WMA.M  
Quant Title : VOC Analysis

TIC Library : C:\Database\NIST0.L  
TIC Integration Parameters: LSCINT.P

No Library Search Compounds Detected

\*\*\*\*\*

Data Path : Z:\voasrv\HPCHEM1\MSVOA\_X\Data\VX110921\  
Data File : VX025121.D  
Acq On : 09 Nov 2021 14:57  
Operator : JC/MD  
Sample : M4543-01 10X  
Misc : 5.0mL/MSVOA\_X/WATER  
ALS Vial : 14 Sample Multiplier: 1

Instrument :  
MSVOA\_X  
ClientSampleId :  
C0U17

Quant Method : Z:\voasrv\HPCHEM1\MSVOA\_X\Method\SFAMXLM110821WMA.M  
Quant Title : VOC Analysis

TIC Library : C:\Database\NIST0.L  
TIC Integration Parameters: LSCINT.P

TIC Top Hit name	RT	EstConc	Units	Response	--Internal Standard--			
					#	RT	Resp	Conc

---