

Data Path : Z:\voasrv\HPCHEM1\MSVOA_X\Data\VX110922\
 Data File : VX032692.D
 Acq On : 09 Nov 2022 20:07
 Operator : JC/MD
 Sample : N5551-18
 Misc : 5.0mL/MSVOA_X/WATER
 ALS Vial : 25 Sample Multiplier: 1

Instrument :
 MSVOA_X
 ClientSampleId :
 TB-2022-11-08

Quant Time: Nov 10 03:07:18 2022
 Quant Method : Z:\voasrv\HPCHEM1\MSVOA_X\Method\82X102622W.M
 Quant Title : SW846 8260
 QLast Update : Thu Oct 27 08:28:06 2022
 Response via : Initial Calibration

Compound	R.T.	QIon	Response	Conc	Units	Dev(Min)

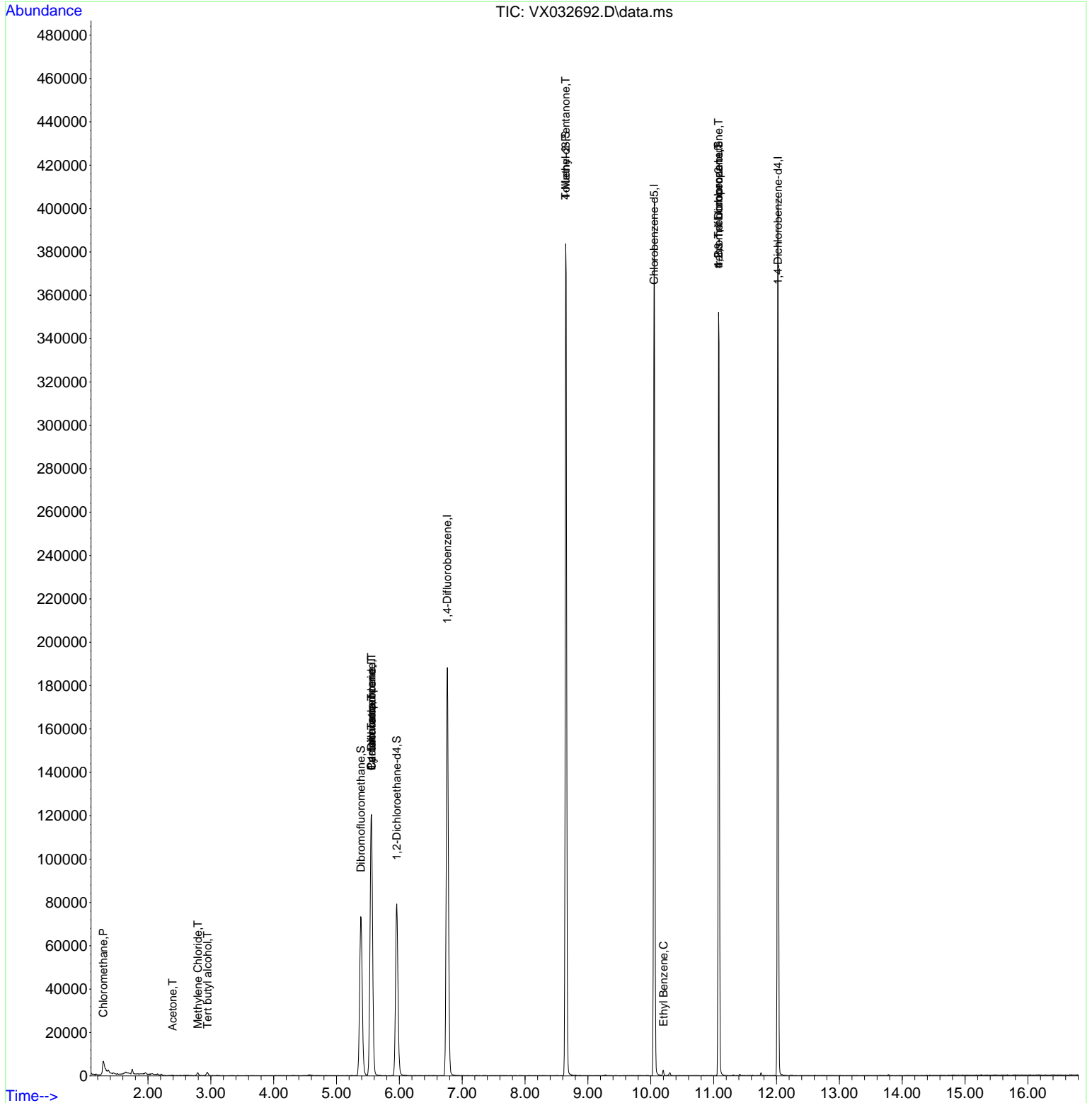
Internal Standards						
1) Pentafluorobenzene	5.556	168	113231	50.000	ug/l	0.00
34) 1,4-Difluorobenzene	6.763	114	191936	50.000	ug/l	0.00
63) Chlorobenzene-d5	10.055	117	171787	50.000	ug/l	0.00
72) 1,4-Dichlorobenzene-d4	12.024	152	81252	50.000	ug/l	0.00
System Monitoring Compounds						
33) 1,2-Dichloroethane-d4	5.958	65	79518	50.542	ug/l	0.00
Spiked Amount	50.000	Range 78 - 117	Recovery	=	101.080%	
35) Dibromofluoromethane	5.385	113	62631	45.746	ug/l	0.00
Spiked Amount	50.000	Range 75 - 124	Recovery	=	91.500%	
50) Toluene-d8	8.647	98	231210	48.567	ug/l	0.00
Spiked Amount	50.000	Range 92 - 112	Recovery	=	97.140%	
62) 4-Bromofluorobenzene	11.079	95	91254	49.071	ug/l	0.00
Spiked Amount	50.000	Range 83 - 123	Recovery	=	98.140%	
Target Compounds						
						Qvalue
3) Chloromethane	1.288	50	258	0.234	ug/l #	43
11) Tert butyl alcohol	2.947	59	967	4.223	ug/l #	72
16) Acetone	2.392	43	334	0.584	ug/l #	45
20) Methylene Chloride	2.794	84	585	0.446	ug/l #	86
31) Cyclohexane	5.556	56	2524	1.323	ug/l #	28
36) 1,1-Dichloropropene	5.556	75	8998	4.720	ug/l #	50
38) Carbon Tetrachloride	5.556	117	12146	5.744	ug/l #	16
51) 4-Methyl-2-Pentanone	8.647	43	1104	0.575	ug/l #	1
67) Ethyl Benzene	10.201	91	1677	0.244	ug/l	96
76) 1,2,3-Trichloropropane	11.079	75	49102	27.163	ug/l #	37
81) trans-1,4-Dichloro-2-b...	11.079	75	49102	86.434	ug/l #	6

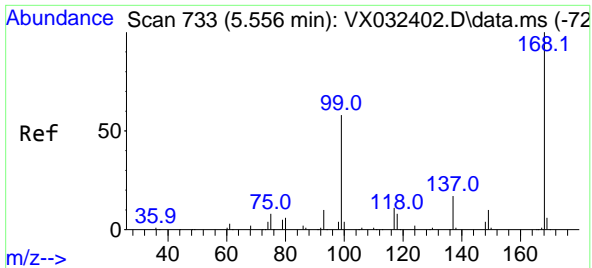
(#) = qualifier out of range (m) = manual integration (+) = signals summed

Data Path : Z:\voasrv\HPCHEM1\MSVOA_X\Data\VX110922\
 Data File : VX032692.D
 Acq On : 09 Nov 2022 20:07
 Operator : JC/MD
 Sample : N5551-18
 Misc : 5.0mL/MSVOA_X/WATER
 ALS Vial : 25 Sample Multiplier: 1

Instrument :
 MSVOA_X
 ClientSampleId :
 TB-2022-11-08

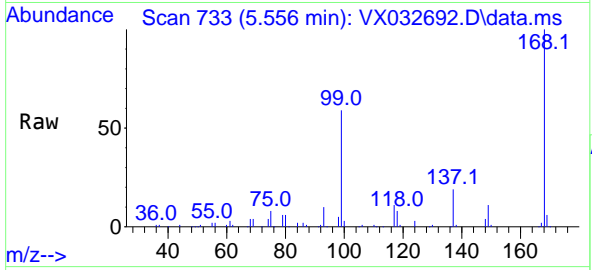
Quant Time: Nov 10 03:07:18 2022
 Quant Method : Z:\voasrv\HPCHEM1\MSVOA_X\Method\82X102622W.M
 Quant Title : SW846 8260
 QLast Update : Thu Oct 27 08:28:06 2022
 Response via : Initial Calibration



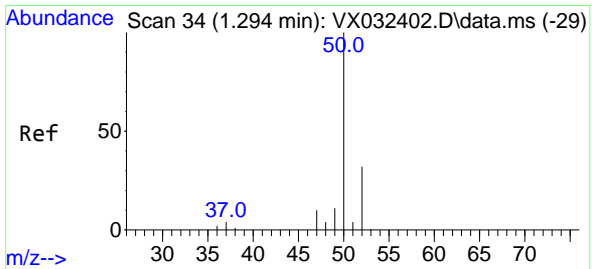
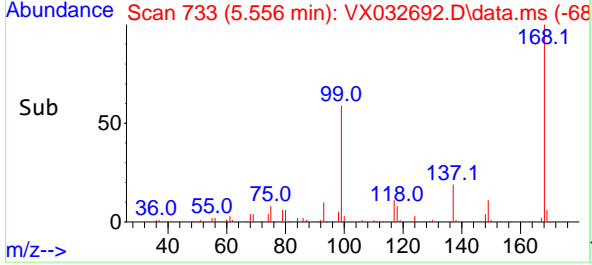
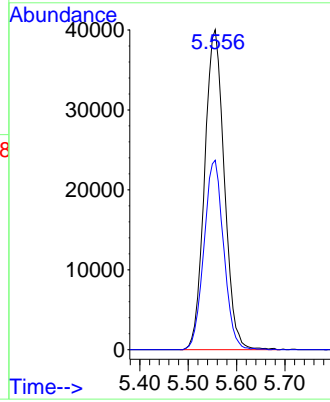


#1
 Pentafluorobenzene
 Concen: 50.000 ug/l
 RT: 5.556 min Scan# 71
 Delta R.T. -0.000 min
 Lab File: VX032692.D
 Acq: 09 Nov 2022 20:07

Instrument : MSVOA_X
 ClientSampleId : TB-2022-11-08

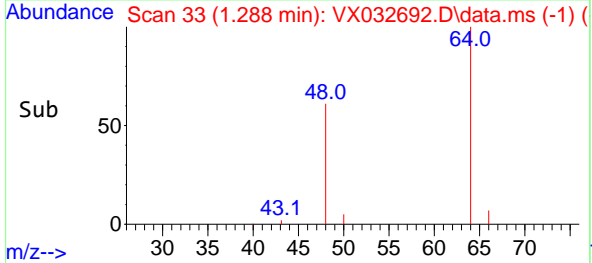
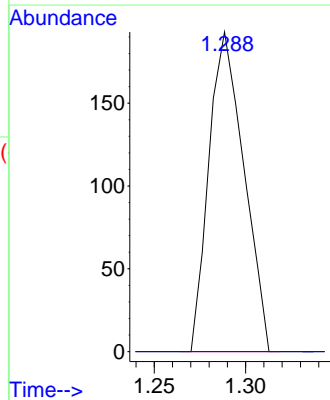
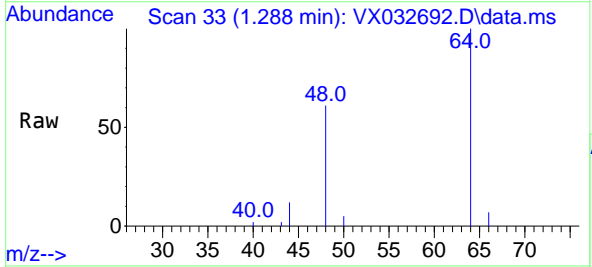


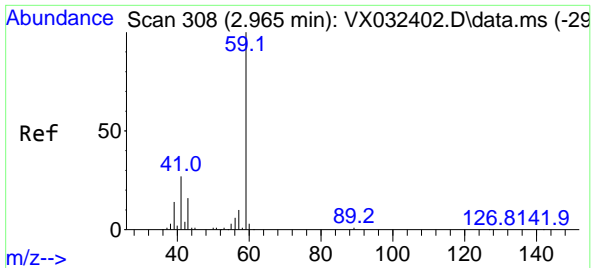
Tgt Ion:168 Resp: 113231
 Ion Ratio Lower Upper
 168 100
 99 59.2 46.1 69.1



#3
 Chloromethane
 Concen: 0.234 ug/l
 RT: 1.288 min Scan# 33
 Delta R.T. -0.006 min
 Lab File: VX032692.D
 Acq: 09 Nov 2022 20:07

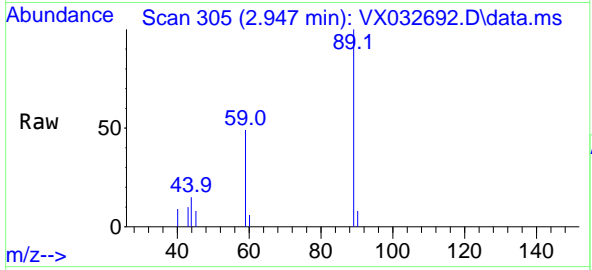
Tgt Ion: 50 Resp: 258
 Ion Ratio Lower Upper
 50 100
 52 0.0 25.4 38.2#



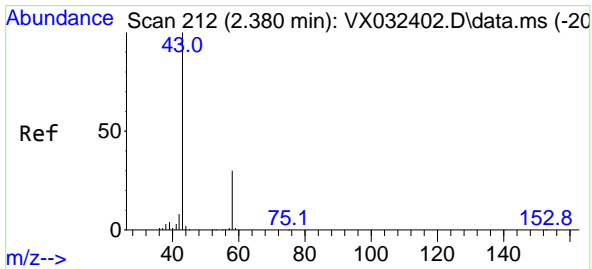
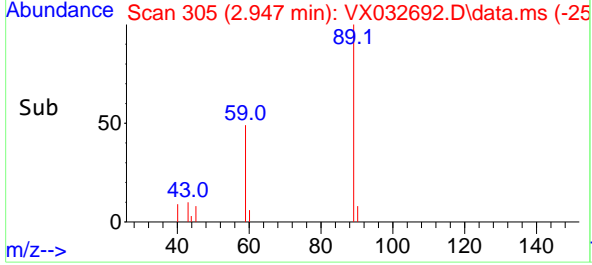
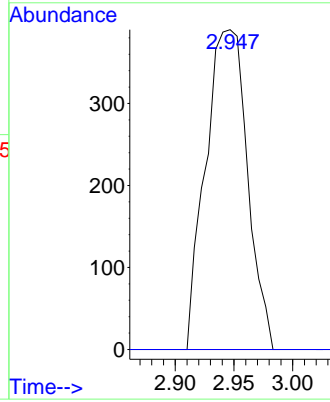


#11
 Tert butyl alcohol
 Concen: 4.223 ug/l
 RT: 2.947 min Scan# 30
 Delta R.T. -0.018 min
 Lab File: VX032692.D
 Acq: 09 Nov 2022 20:07

Instrument : MSVOA_X
 ClientSampleId : TB-2022-11-08

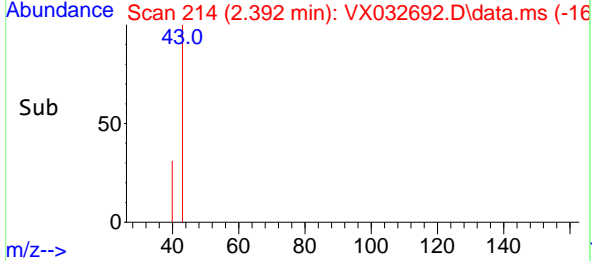
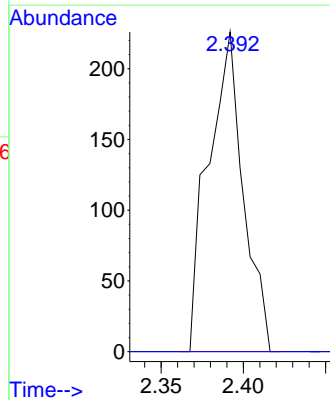
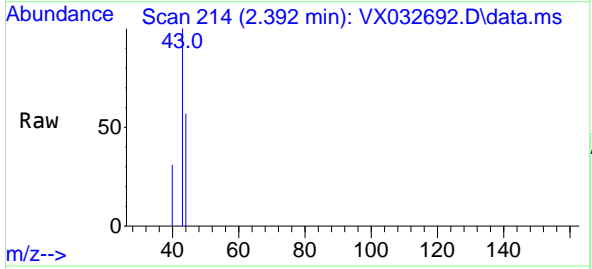


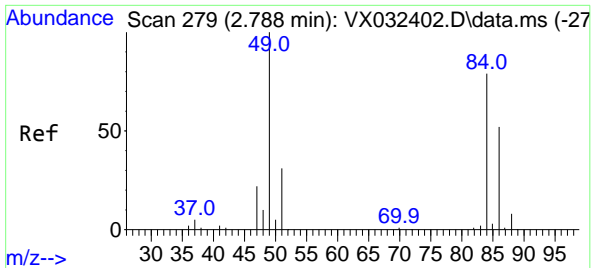
Tgt Ion: 59 Resp: 967
 Ion Ratio Lower Upper
 59 100
 57 0.0 8.2 12.4#



#16
 Acetone
 Concen: 0.584 ug/l
 RT: 2.392 min Scan# 214
 Delta R.T. 0.012 min
 Lab File: VX032692.D
 Acq: 09 Nov 2022 20:07

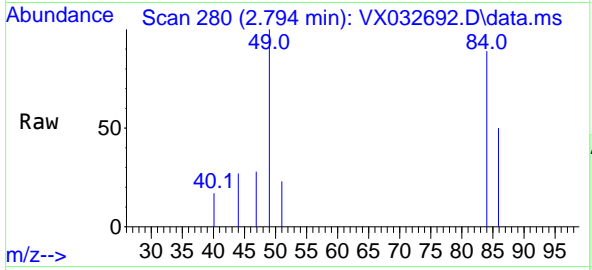
Tgt Ion: 43 Resp: 334
 Ion Ratio Lower Upper
 43 100
 58 0.0 23.8 35.8#





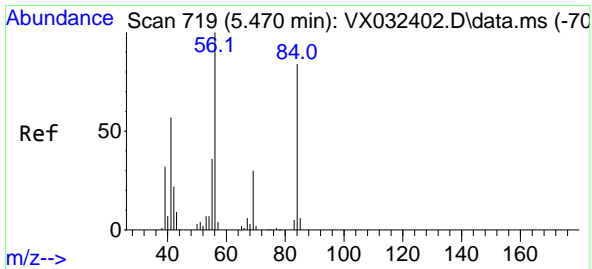
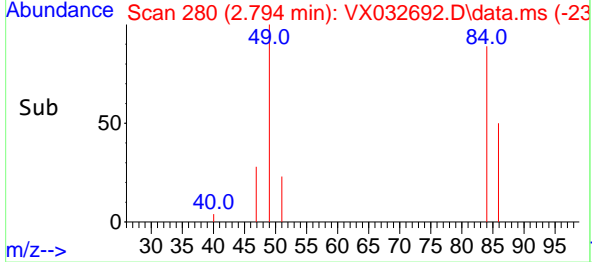
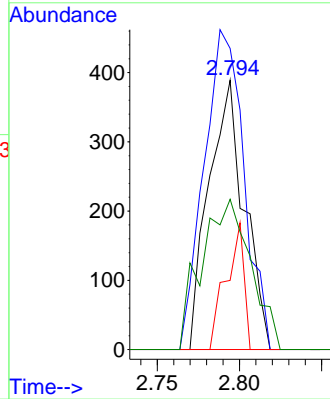
#20
 Methylene Chloride
 Concen: 0.446 ug/l
 RT: 2.794 min Scan# 21
 Delta R.T. 0.006 min
 Lab File: VX032692.D
 Acq: 09 Nov 2022 20:07

Instrument : MSVOA_X
 ClientSampleId : TB-2022-11-08

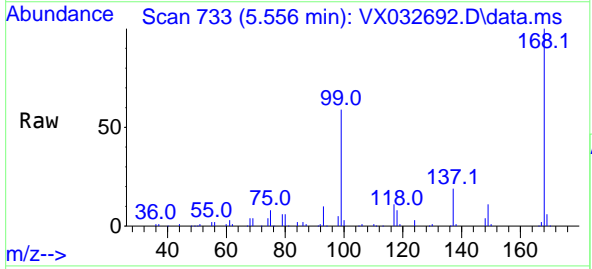


Tgt Ion: 84 Resp: 585

Ion	Ratio	Lower	Upper
84	100		
49	111.8	101.0	151.6
51	25.7	31.1	46.7#
86	55.8	52.3	78.5

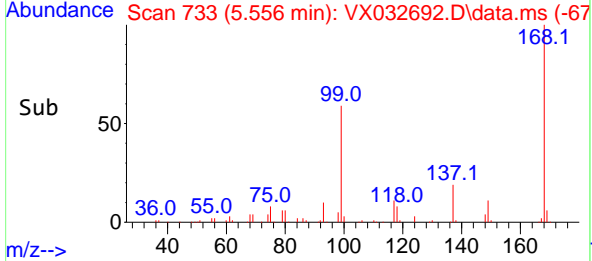
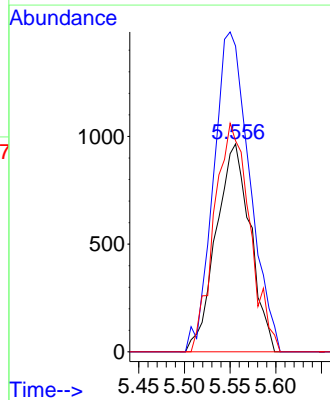


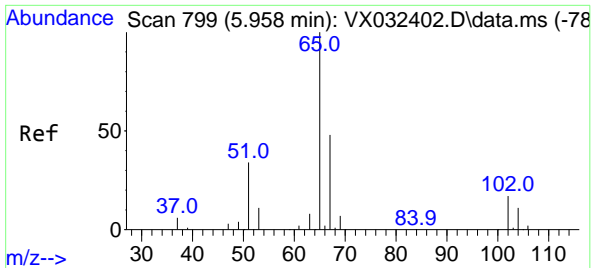
#31
 Cyclohexane
 Concen: 1.323 ug/l
 RT: 5.556 min Scan# 733
 Delta R.T. 0.085 min
 Lab File: VX032692.D
 Acq: 09 Nov 2022 20:07



Tgt Ion: 56 Resp: 2524

Ion	Ratio	Lower	Upper
56	100		
69	147.2	24.1	36.1#
84	101.6	66.9	100.3#





#33
 1,2-Dichloroethane-d4
 Concen: 50.542 ug/l
 RT: 5.958 min Scan# 799
 Delta R.T. 0.000 min
 Lab File: VX032692.D
 Acq: 09 Nov 2022 20:07

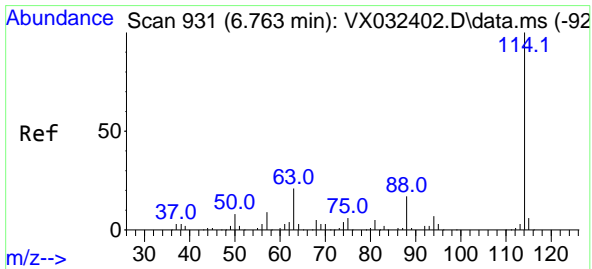
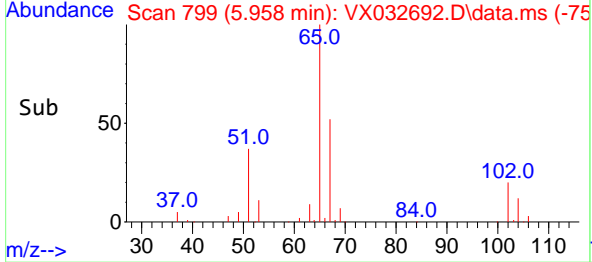
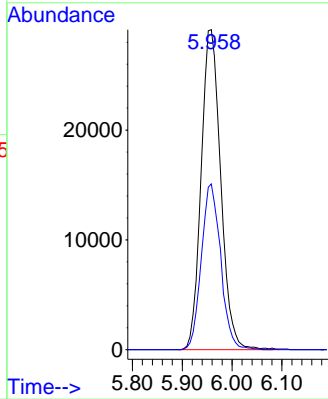
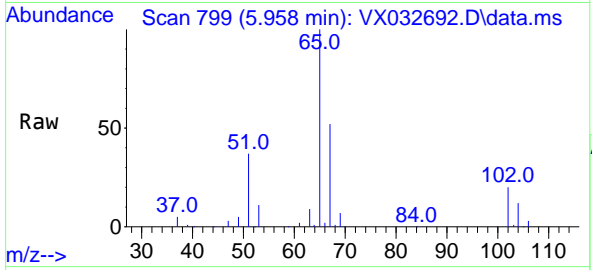
Instrument :

MSVOA_X

ClientSampleId :

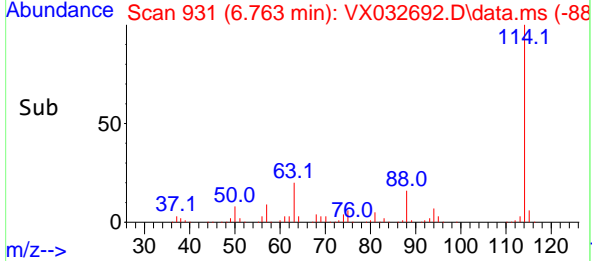
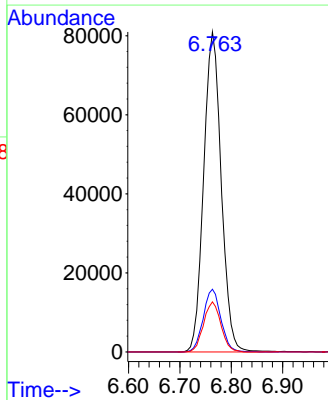
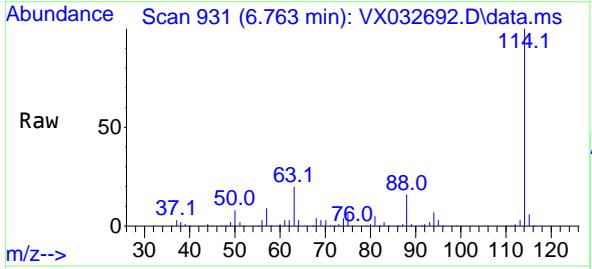
TB-2022-11-08

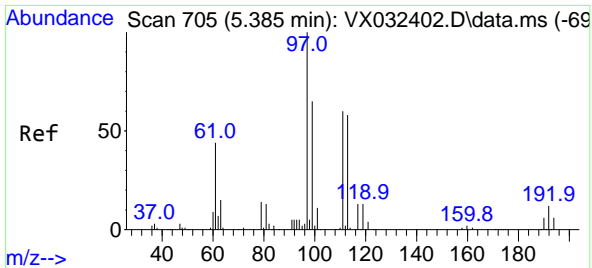
Tgt Ion: 65 Resp: 79518
 Ion Ratio Lower Upper
 65 100
 67 51.1 0.0 101.8



#34
 1,4-Difluorobenzene
 Concen: 50.000 ug/l
 RT: 6.763 min Scan# 931
 Delta R.T. 0.000 min
 Lab File: VX032692.D
 Acq: 09 Nov 2022 20:07

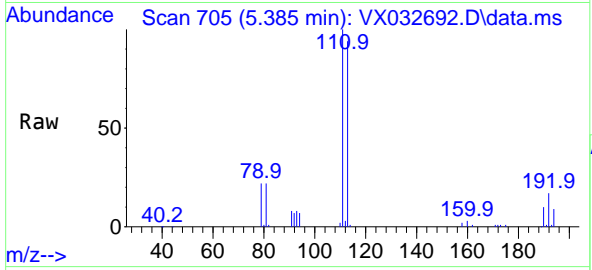
Tgt Ion: 114 Resp: 191936
 Ion Ratio Lower Upper
 114 100
 63 19.6 0.0 41.6
 88 15.7 0.0 33.4





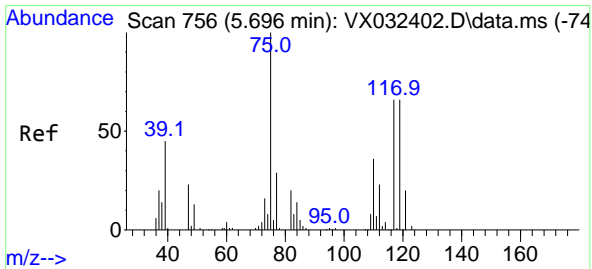
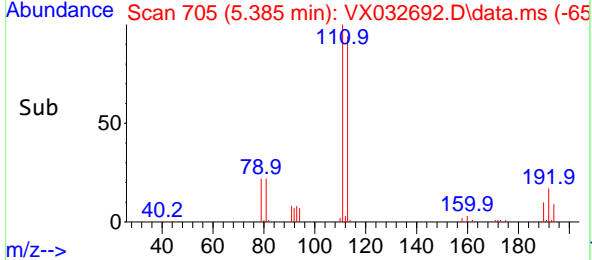
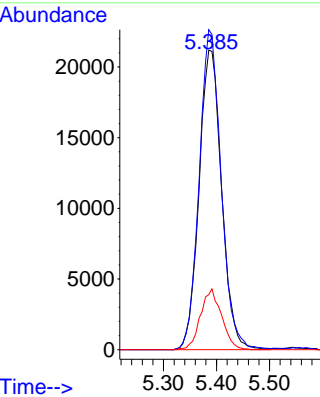
#35
 Dibromofluoromethane
 Concen: 45.746 ug/l
 RT: 5.385 min Scan# 705
 Delta R.T. 0.000 min
 Lab File: VX032692.D
 Acq: 09 Nov 2022 20:07

Instrument : MSVOA_X
 ClientSampleId : TB-2022-11-08



Tgt Ion: 113 Resp: 62631

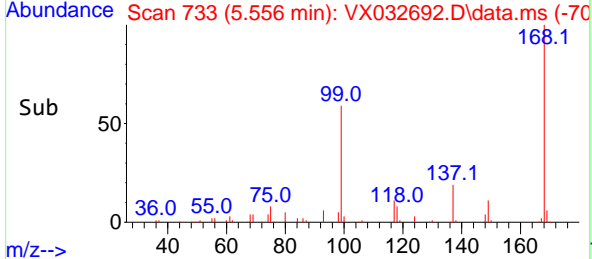
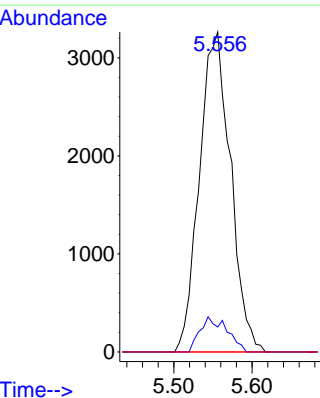
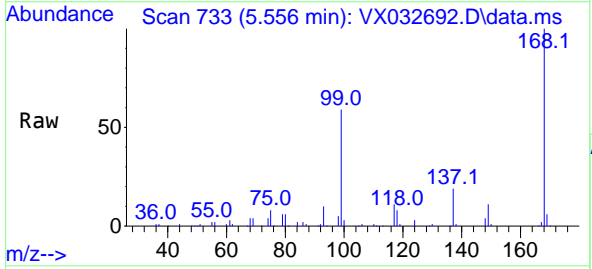
Ion	Ratio	Lower	Upper
113	100		
111	103.9	82.4	123.6
192	18.9	15.4	23.2

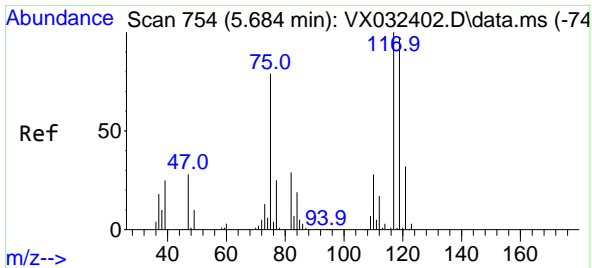


#36
 1,1-Dichloropropene
 Concen: 4.720 ug/l
 RT: 5.556 min Scan# 733
 Delta R.T. -0.140 min
 Lab File: VX032692.D
 Acq: 09 Nov 2022 20:07

Tgt Ion: 75 Resp: 8998

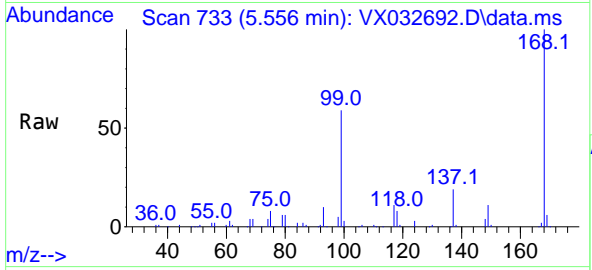
Ion	Ratio	Lower	Upper
75	100		
110	9.5	18.4	55.2#
77	0.0	24.5	36.7#



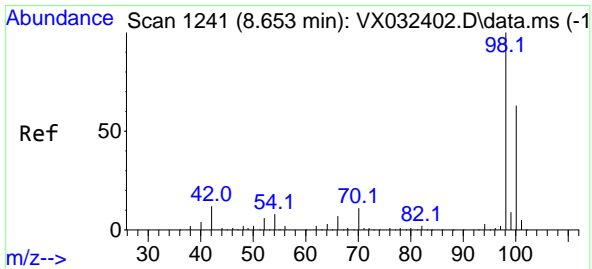
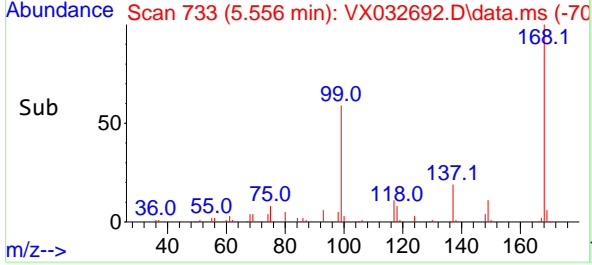
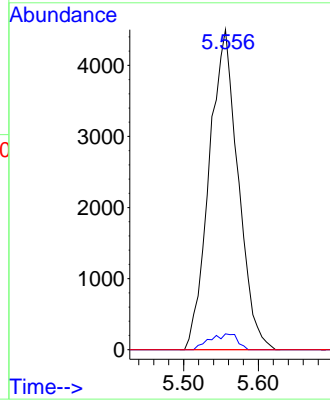


#38
 Carbon Tetrachloride
 Concen: 5.744 ug/l
 RT: 5.556 min Scan# 71
 Delta R.T. -0.128 min
 Lab File: VX032692.D
 Acq: 09 Nov 2022 20:07

Instrument : MSVOA_X
 ClientSampleId : TB-2022-11-08

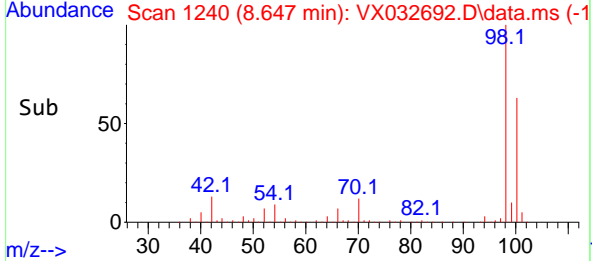
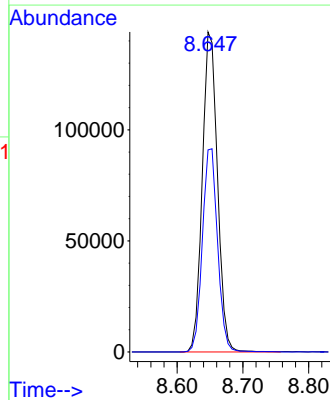
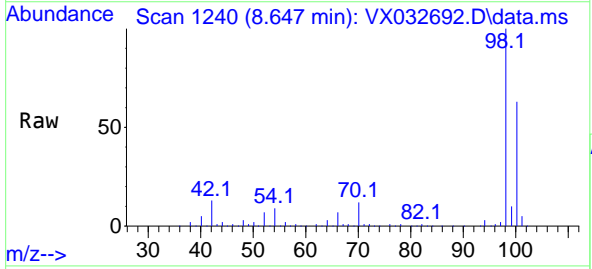


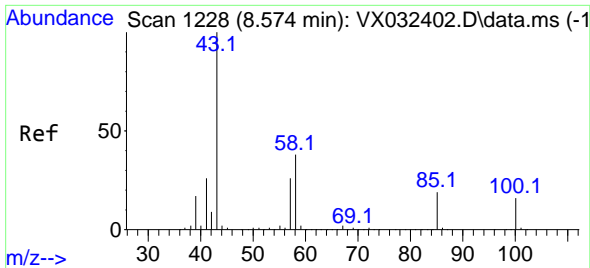
Tgt Ion:117 Resp: 12146
 Ion Ratio Lower Upper
 117 100
 119 5.0 77.2 115.8#
 121 0.0 25.8 38.6#



#50
 Toluene-d8
 Concen: 48.567 ug/l
 RT: 8.647 min Scan# 1240
 Delta R.T. -0.006 min
 Lab File: VX032692.D
 Acq: 09 Nov 2022 20:07

Tgt Ion: 98 Resp: 231210
 Ion Ratio Lower Upper
 98 100
 100 63.6 50.9 76.3

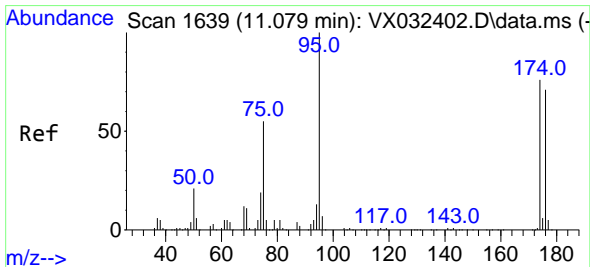
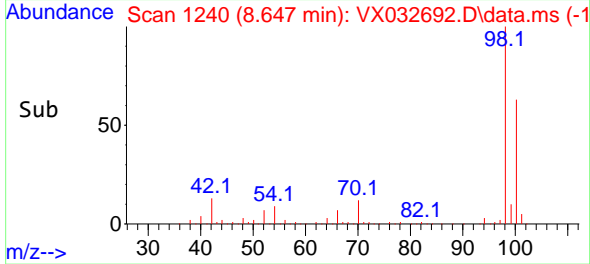
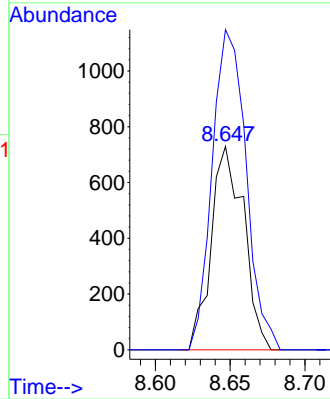
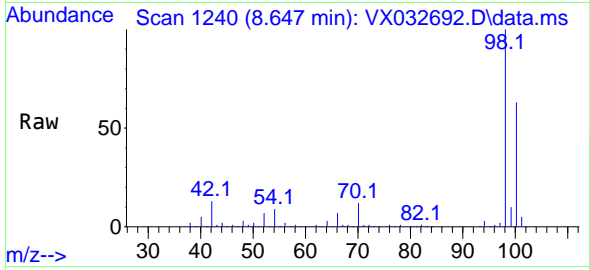




#51
 4-Methyl-2-Pentanone
 Concen: 0.575 ug/l
 RT: 8.647 min Scan# 11
 Delta R.T. 0.073 min
 Lab File: VX032692.D
 Acq: 09 Nov 2022 20:07

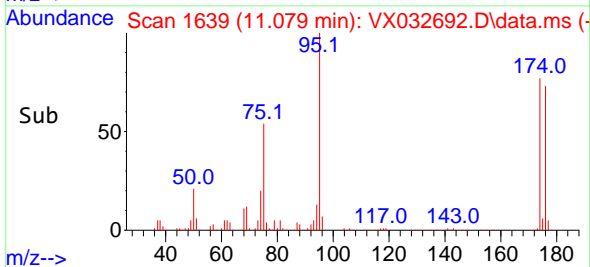
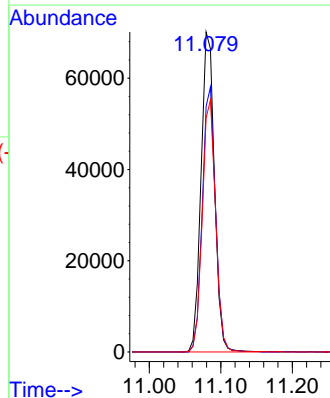
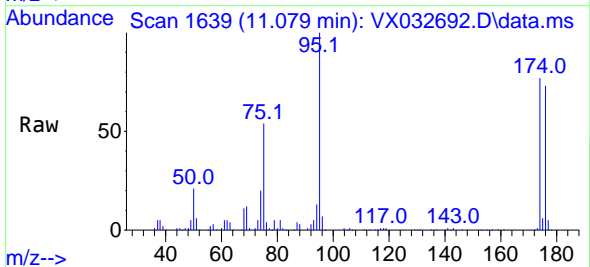
Instrument : MSVOA_X
 ClientSampleId : TB-2022-11-08

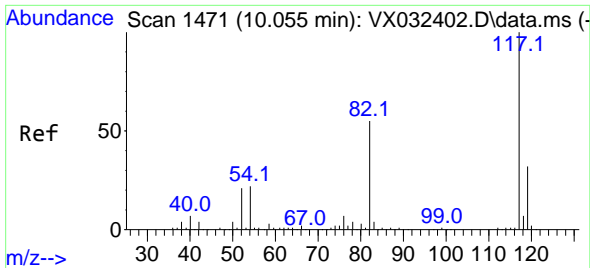
Tgt Ion: 43 Resp: 1104
 Ion Ratio Lower Upper
 43 100
 58 164.1 30.9 46.3#



#62
 4-Bromofluorobenzene
 Concen: 49.071 ug/l
 RT: 11.079 min Scan# 1639
 Delta R.T. 0.000 min
 Lab File: VX032692.D
 Acq: 09 Nov 2022 20:07

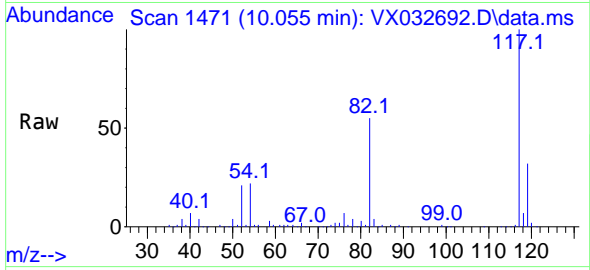
Tgt Ion: 95 Resp: 91254
 Ion Ratio Lower Upper
 95 100
 174 81.4 0.0 164.0
 176 78.2 0.0 154.4



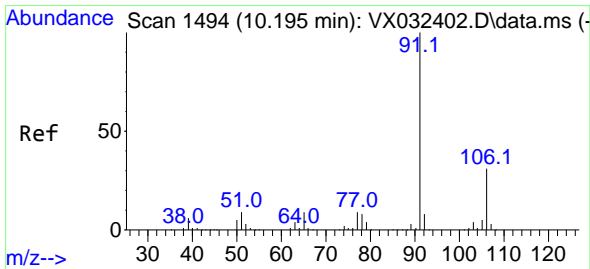
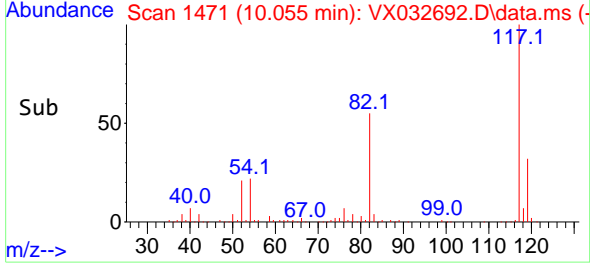
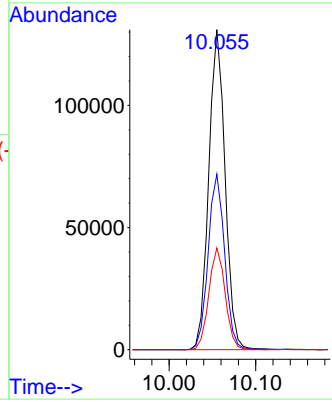


#63
 Chlorobenzene-d5
 Concen: 50.000 ug/l
 RT: 10.055 min Scan# 1471
 Delta R.T. 0.000 min
 Lab File: VX032692.D
 Acq: 09 Nov 2022 20:07

Instrument : MSVOA_X
 ClientSampleId : TB-2022-11-08

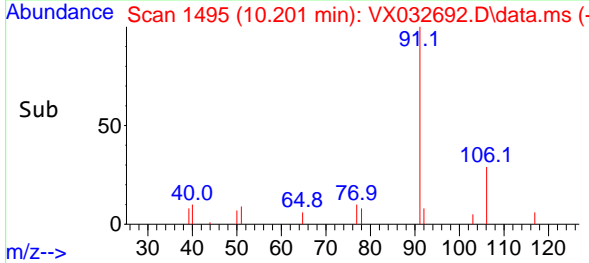
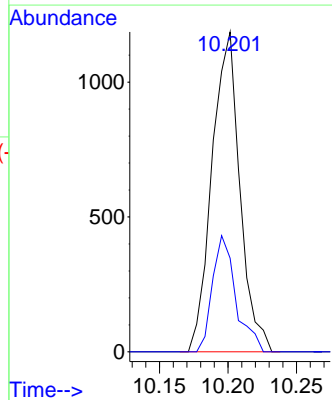
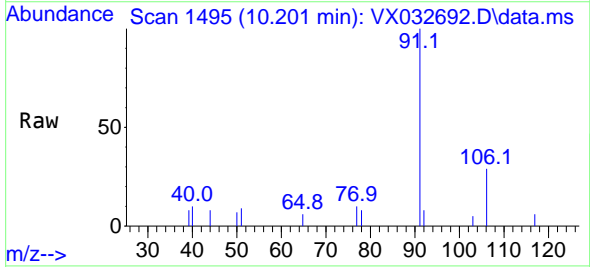


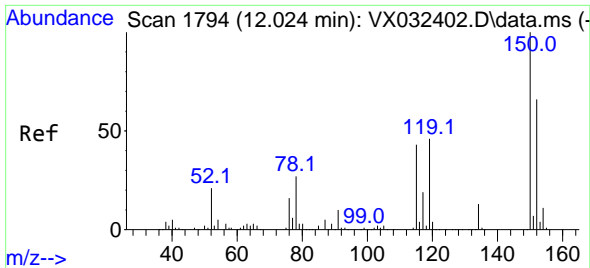
Tgt Ion:117 Resp: 171787
 Ion Ratio Lower Upper
 117 100
 82 54.9 44.3 66.5
 119 31.8 25.7 38.5



#67
 Ethyl Benzene
 Concen: 0.244 ug/l
 RT: 10.201 min Scan# 1495
 Delta R.T. 0.006 min
 Lab File: VX032692.D
 Acq: 09 Nov 2022 20:07

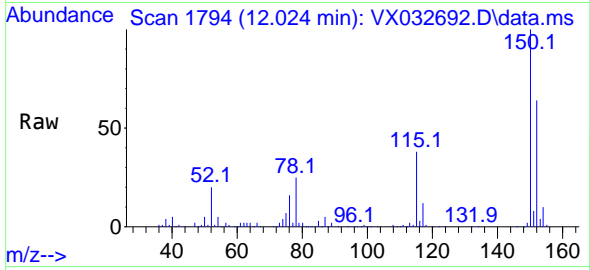
Tgt Ion: 91 Resp: 1677
 Ion Ratio Lower Upper
 91 100
 106 29.3 25.0 37.6



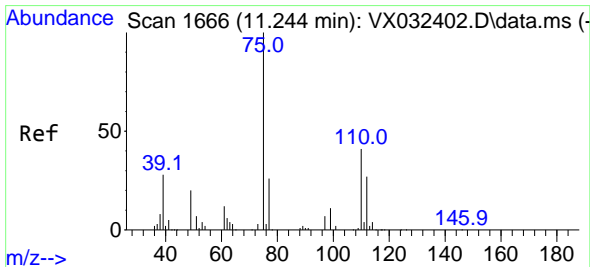
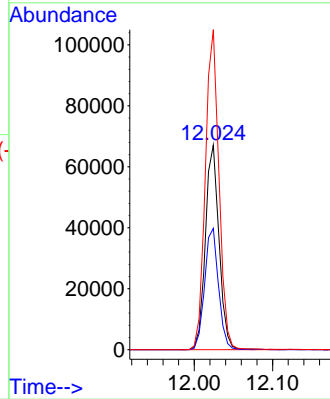
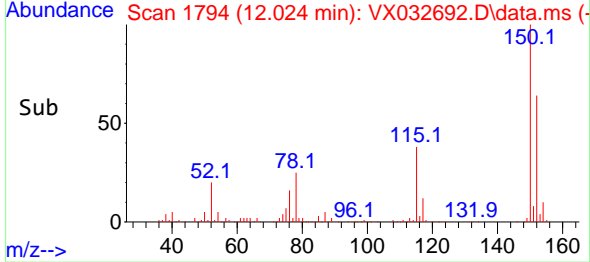


#72
 1,4-Dichlorobenzene-d4
 Concen: 50.000 ug/l
 RT: 12.024 min Scan# 11
 Delta R.T. 0.000 min
 Lab File: VX032692.D
 Acq: 09 Nov 2022 20:07

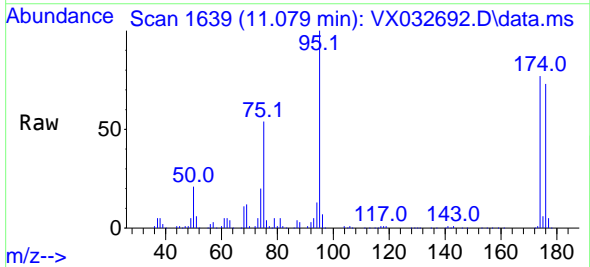
Instrument :
 MSVOA_X
 ClientSampleId :
 TB-2022-11-08



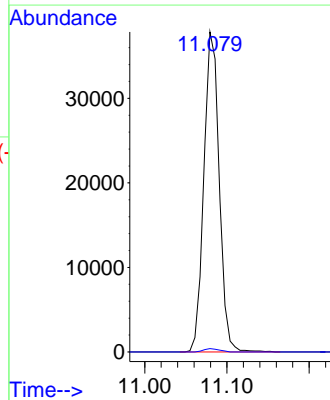
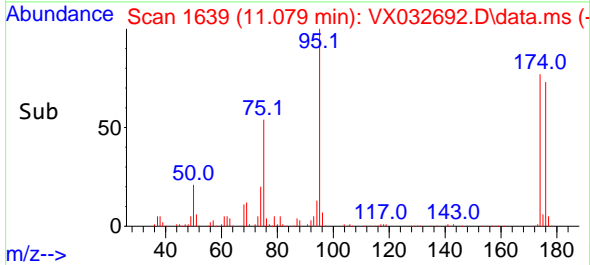
Tgt Ion:152 Resp: 81252
 Ion Ratio Lower Upper
 152 100
 115 60.1 44.0 132.0
 150 156.0 0.0 351.8

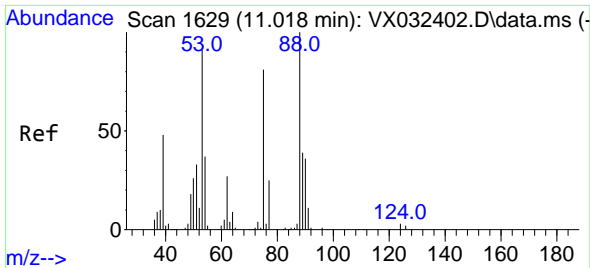


#76
 1,2,3-Trichloropropane
 Concen: 27.163 ug/l
 RT: 11.079 min Scan# 1639
 Delta R.T. -0.164 min
 Lab File: VX032692.D
 Acq: 09 Nov 2022 20:07



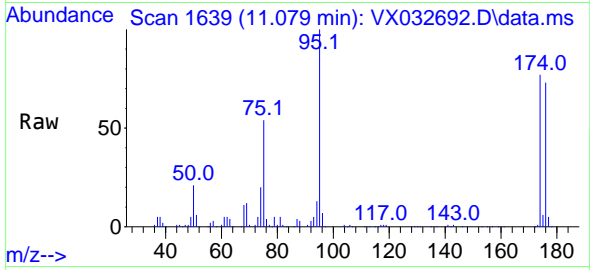
Tgt Ion: 75 Resp: 49102
 Ion Ratio Lower Upper
 75 100
 77 1.1 20.0 60.0#





#81
 trans-1,4-Dichloro-2-butene
 Concen: 86.434 ug/l
 RT: 11.079 min Scan# 10
 Delta R.T. 0.061 min
 Lab File: VX032692.D
 Acq: 09 Nov 2022 20:07

Instrument :
 MSVOA_X
 ClientSampleId :
 TB-2022-11-08



Tgt Ion: 75 Resp: 49102

Ion	Ratio	Lower	Upper
75	100		
53	0.0	86.9	130.3#
89	0.1	38.3	57.5#

