

Data Path : Z:\voasrv\HPCHEM1\MSVOA_X\Data\VX110923\
 Data File : VX038708.D
 Acq On : 10 Nov 2023 06:35
 Operator : JC/MD
 Sample : 05241-21
 Misc : 5.0mL/MSVOA_X/WATER
 ALS Vial : 46 Sample Multiplier: 1

Instrument :
 MSVOA_X
 ClientSampleId :
 FSND-MW-22R-20231102

Quant Time: Nov 10 16:43:12 2023
 Quant Method : Z:\voasrv\HPCHEM1\MSVOA_X\Method\82X110723W.M
 Quant Title : SW846 8260
 QLast Update : Wed Nov 08 03:19:07 2023
 Response via : Initial Calibration

Compound	R.T.	QIon	Response	Conc	Units	Dev(Min)

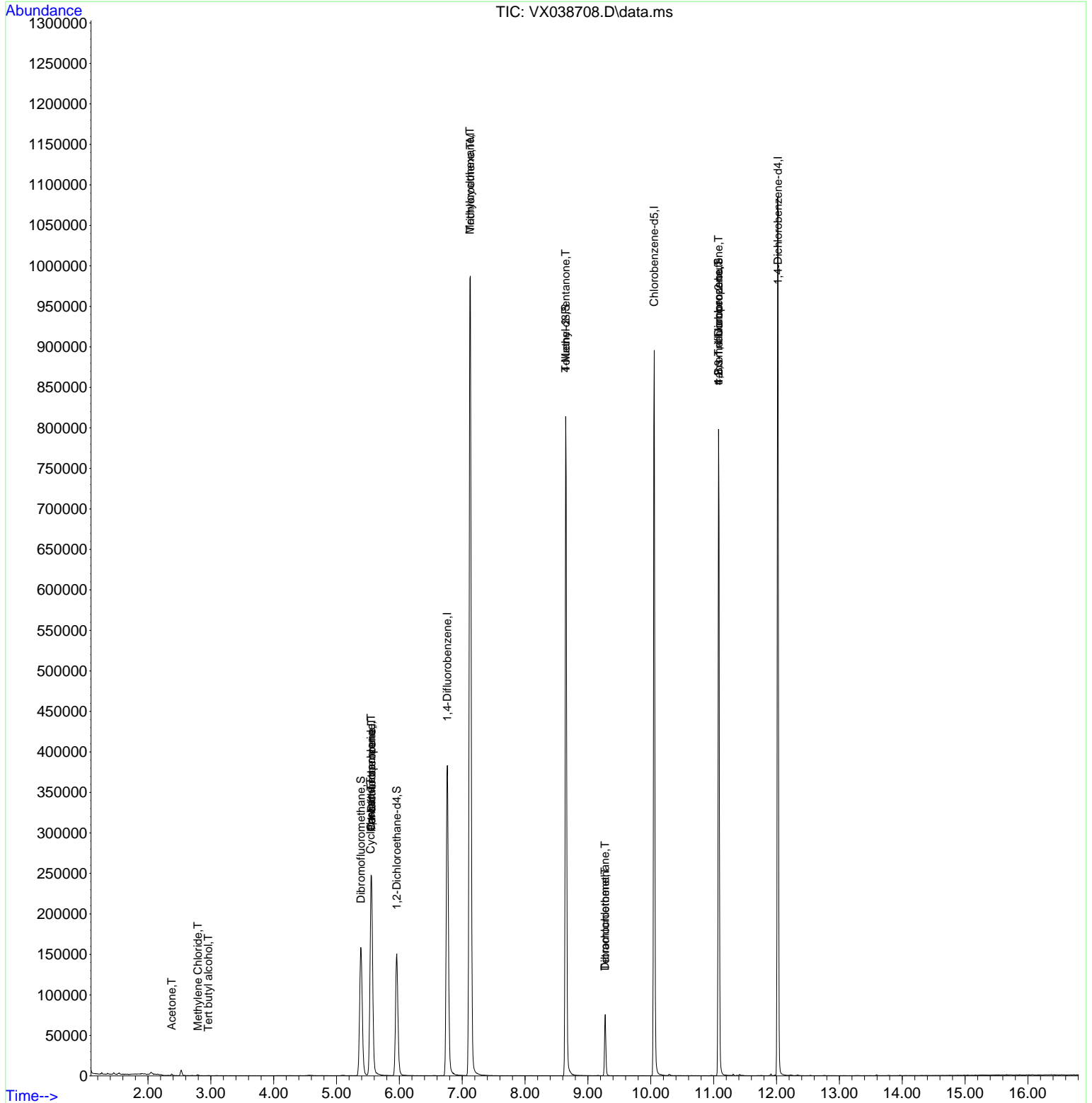
Internal Standards						
1) Pentafluorobenzene	5.556	168	262859	50.000	ug/l	# 0.00
34) 1,4-Difluorobenzene	6.763	114	435219	50.000	ug/l	0.00
63) Chlorobenzene-d5	10.055	117	449507	50.000	ug/l	0.00
72) 1,4-Dichlorobenzene-d4	12.024	152	257532	50.000	ug/l	0.00
System Monitoring Compounds						
33) 1,2-Dichloroethane-d4	5.958	65	150084	45.862	ug/l	0.00
Spiked Amount	50.000	Range	78 - 117	Recovery	=	91.720%
35) Dibromofluoromethane	5.385	113	140926	44.959	ug/l	0.00
Spiked Amount	50.000	Range	75 - 124	Recovery	=	89.920%
50) Toluene-d8	8.647	98	516054	46.007	ug/l	0.00
Spiked Amount	50.000	Range	92 - 112	Recovery	=	92.020%
62) 4-Bromofluorobenzene	11.079	95	217013	49.901	ug/l	0.00
Spiked Amount	50.000	Range	83 - 123	Recovery	=	99.800%
Target Compounds						
						Qvalue
11) Tert butyl alcohol	2.959	59	199	0.297	ug/l	# 78
16) Acetone	2.380	43	2246	1.630	ug/l	# 83
20) Methylene Chloride	2.794	84	702	0.253	ug/l	# 58
31) Cyclohexane	5.544	56	4037	1.115	ug/l	# 1
36) 1,1-Dichloropropene	5.556	75	16636	4.272	ug/l	# 52
38) Carbon Tetrachloride	5.550	117	24908	5.722	ug/l	# 16
39) Methylcyclohexane	7.123	83	4194	0.862	ug/l	# 1
44) Trichloroethene	7.129	130	427520	122.517	ug/l	88
51) 4-Methyl-2-Pentanone	8.647	43	1720	0.432	ug/l	# 1
60) Dibromochloromethane	9.275	129	14171	4.050	ug/l	# 11
64) Tetrachloroethene	9.275	164	14675	4.361	ug/l	96
76) 1,2,3-Trichloropropane	11.079	75	104353	20.460	ug/l	# 38
81) trans-1,4-Dichloro-2-b...	11.079	75	104353	62.373	ug/l	# 5

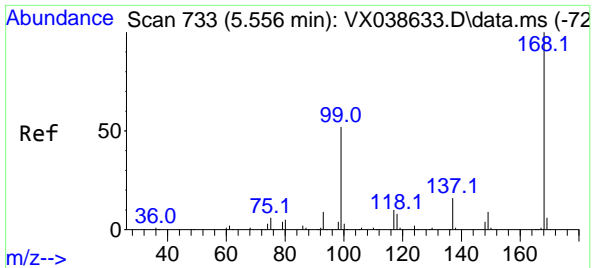
(#) = qualifier out of range (m) = manual integration (+) = signals summed

Data Path : Z:\voasrv\HPCHEM1\MSVOA_X\Data\VX110923\
 Data File : VX038708.D
 Acq On : 10 Nov 2023 06:35
 Operator : JC/MD
 Sample : 05241-21
 Misc : 5.0mL/MSVOA_X/WATER
 ALS Vial : 46 Sample Multiplier: 1

Instrument :
 MSVOA_X
ClientSampleId :
 FSND-MW-22R-20231102

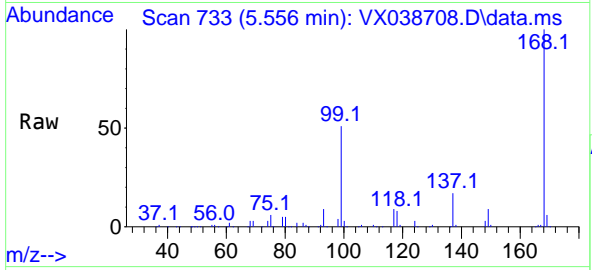
Quant Time: Nov 10 16:43:12 2023
 Quant Method : Z:\voasrv\HPCHEM1\MSVOA_X\Method\82X110723W.M
 Quant Title : SW846 8260
 QLast Update : Wed Nov 08 03:19:07 2023
 Response via : Initial Calibration



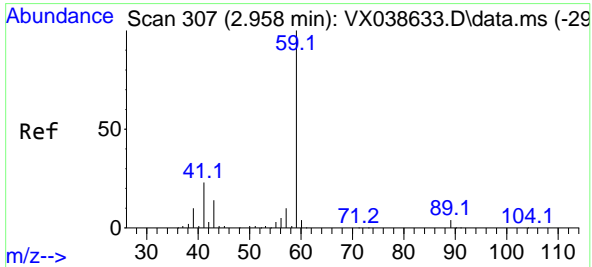
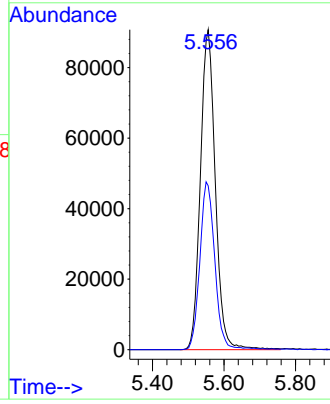
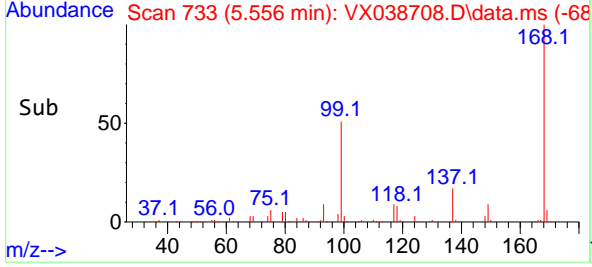


#1
 Pentafluorobenzene
 Concen: 50.000 ug/l
 RT: 5.556 min Scan# 71
 Delta R.T. -0.000 min
 Lab File: VX038708.D
 Acq: 10 Nov 2023 06:35

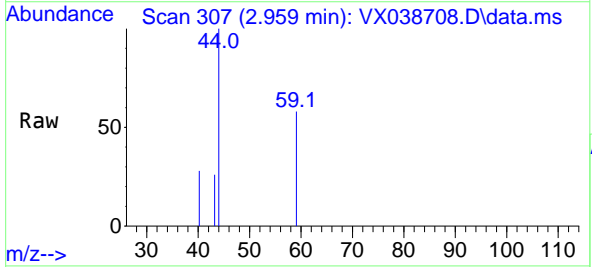
Instrument : MSVOA_X
 ClientSampleId : FSND-MW-22R-20231102



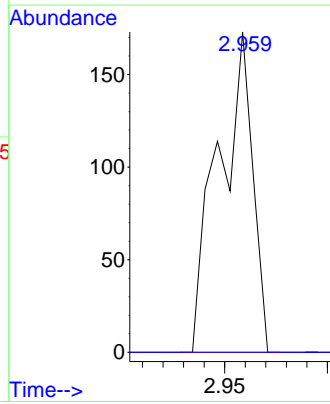
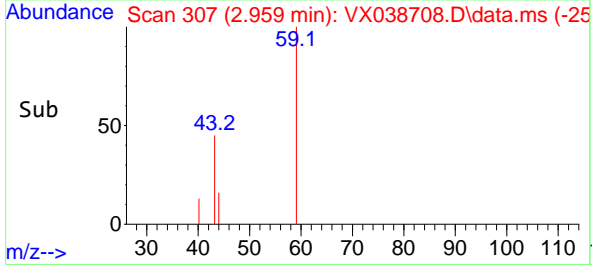
Tgt Ion:168 Resp: 262859
 Ion Ratio Lower Upper
 168 100
 99 51.2 56.6 85.0#

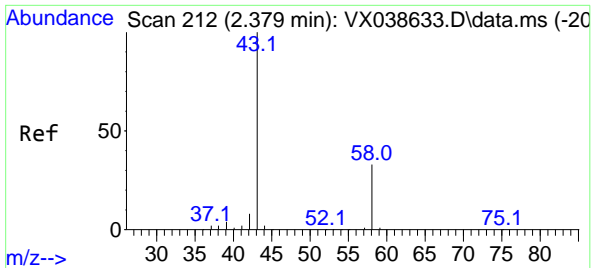


#11
 Tert butyl alcohol
 Concen: 0.297 ug/l
 RT: 2.959 min Scan# 307
 Delta R.T. 0.000 min
 Lab File: VX038708.D
 Acq: 10 Nov 2023 06:35



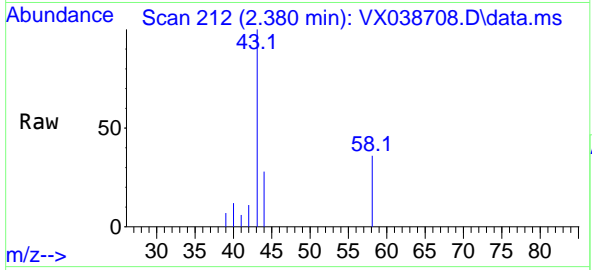
Tgt Ion: 59 Resp: 199
 Ion Ratio Lower Upper
 59 100
 57 0.0 6.0 9.0#



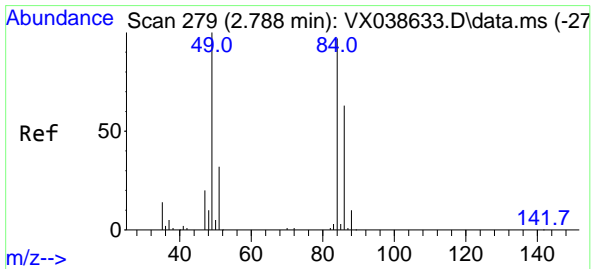
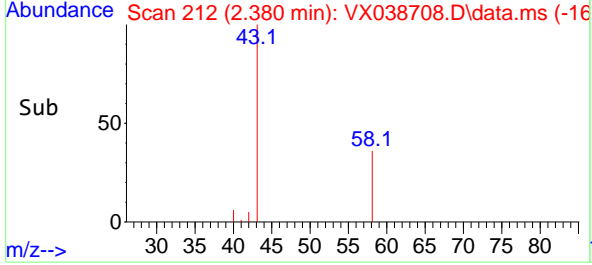
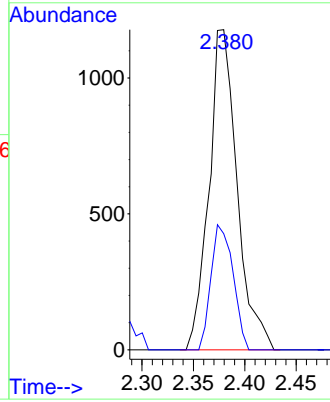


#16
 Acetone
 Concen: 1.630 ug/l
 RT: 2.380 min Scan# 212
 Delta R.T. 0.000 min
 Lab File: VX038708.D
 Acq: 10 Nov 2023 06:35

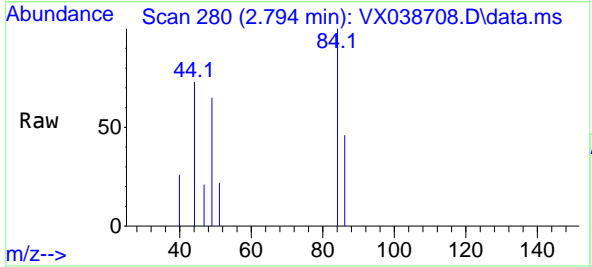
Instrument : MSVOA_X
 ClientSampleId : FSND-MW-22R-20231102



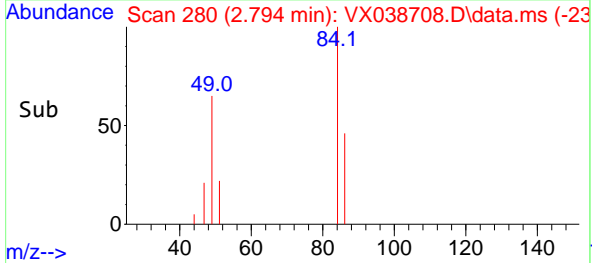
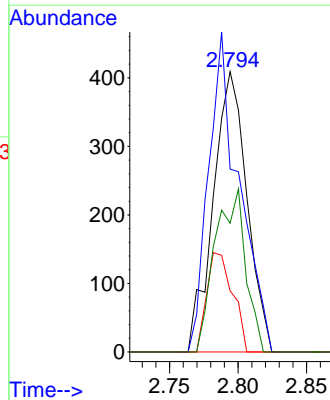
Tgt Ion: 43 Resp: 2246
 Ion Ratio Lower Upper
 43 100
 58 36.2 21.9 32.9#

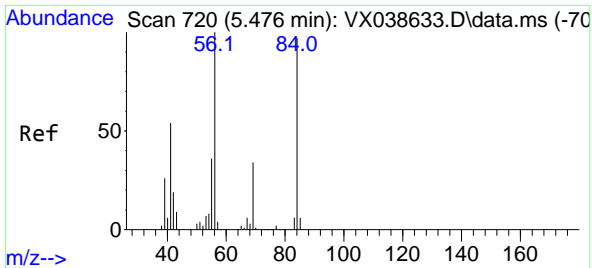


#20
 Methylene Chloride
 Concen: 0.253 ug/l
 RT: 2.794 min Scan# 280
 Delta R.T. 0.006 min
 Lab File: VX038708.D
 Acq: 10 Nov 2023 06:35



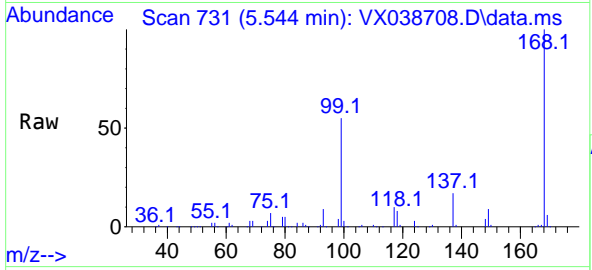
Tgt Ion: 84 Resp: 702
 Ion Ratio Lower Upper
 84 100
 49 65.3 103.6 155.4#
 51 21.8 33.8 50.6#
 86 46.0 49.4 74.0#



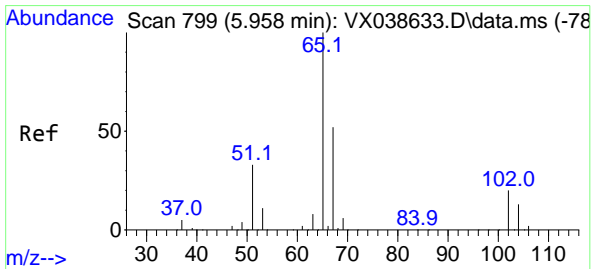
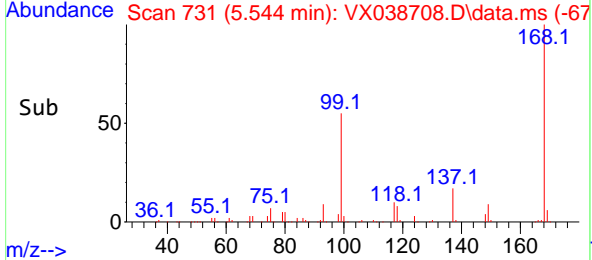
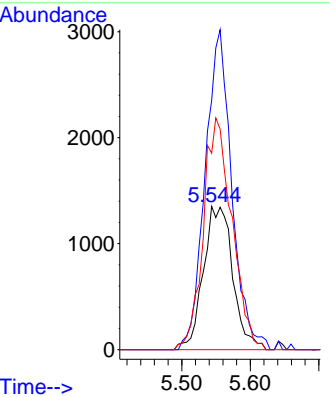


#31
 Cyclohexane
 Concen: 1.115 ug/l
 RT: 5.544 min Scan# 711
 Delta R.T. 0.067 min
 Lab File: VX038708.D
 Acq: 10 Nov 2023 06:35

Instrument : MSVOA_X
 ClientSampleId : FSND-MW-22R-20231102

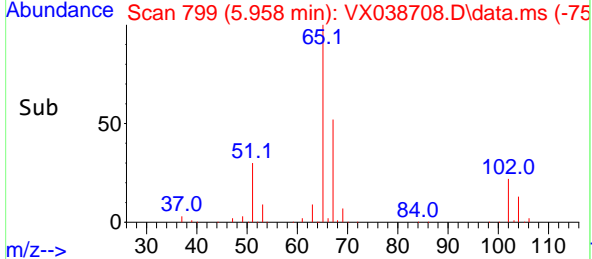
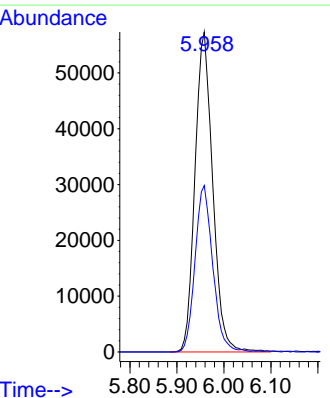
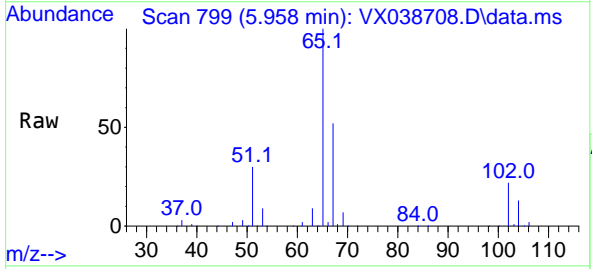


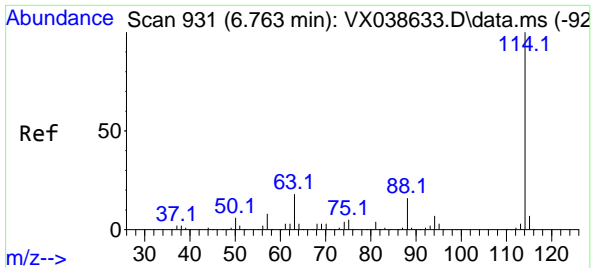
Tgt Ion: 56 Resp: 4037
 Ion Ratio Lower Upper
 56 100
 69 173.7 23.4 35.2#
 84 137.1 65.9 98.9#



#33
 1,2-Dichloroethane-d4
 Concen: 45.862 ug/l
 RT: 5.958 min Scan# 799
 Delta R.T. 0.000 min
 Lab File: VX038708.D
 Acq: 10 Nov 2023 06:35

Tgt Ion: 65 Resp: 150084
 Ion Ratio Lower Upper
 65 100
 67 51.9 0.0 100.2



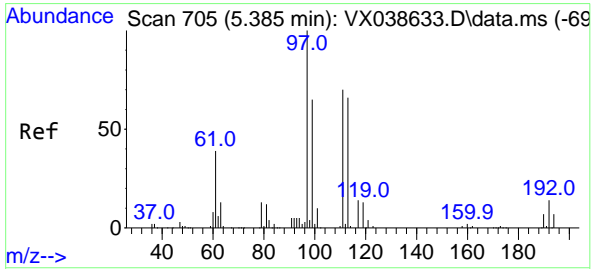
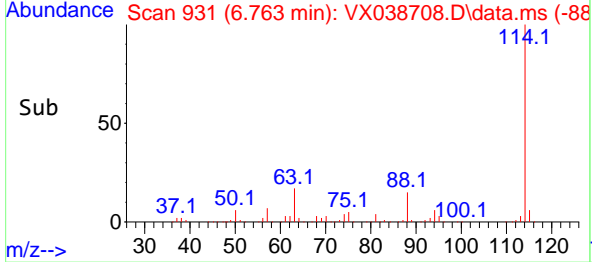
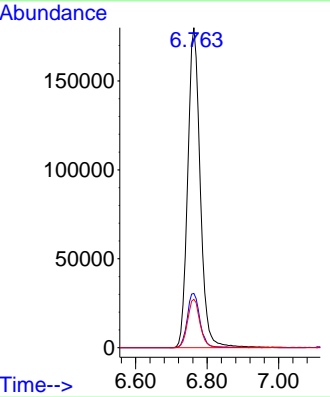
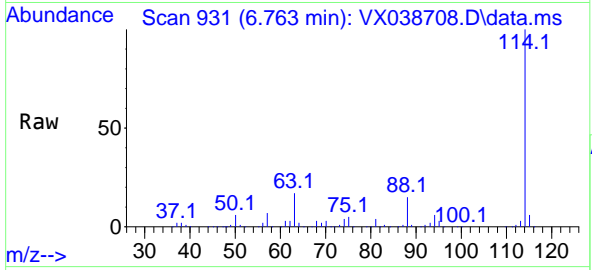


#34
 1,4-Difluorobenzene
 Concen: 50.000 ug/l
 RT: 6.763 min Scan# 911
 Delta R.T. 0.000 min
 Lab File: VX038708.D
 Acq: 10 Nov 2023 06:35

Instrument : MSVOA_X
 ClientSampleId : FSND-MW-22R-20231102

Tgt Ion:114 Resp: 435219

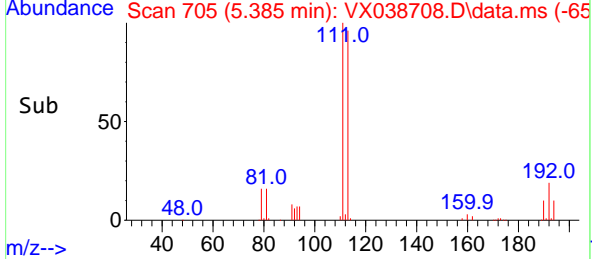
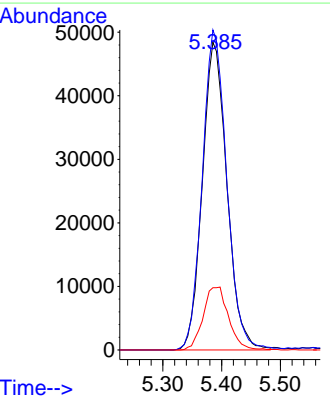
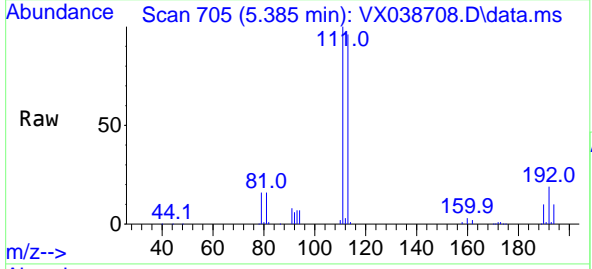
Ion	Ratio	Lower	Upper
114	100		
63	17.0	0.0	45.0
88	15.1	0.0	36.6

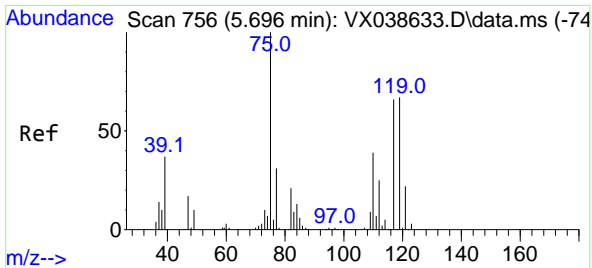


#35
 Dibromofluoromethane
 Concen: 44.959 ug/l
 RT: 5.385 min Scan# 705
 Delta R.T. 0.000 min
 Lab File: VX038708.D
 Acq: 10 Nov 2023 06:35

Tgt Ion:113 Resp: 140926

Ion	Ratio	Lower	Upper
113	100		
111	103.6	82.9	124.3
192	21.0	13.3	19.9



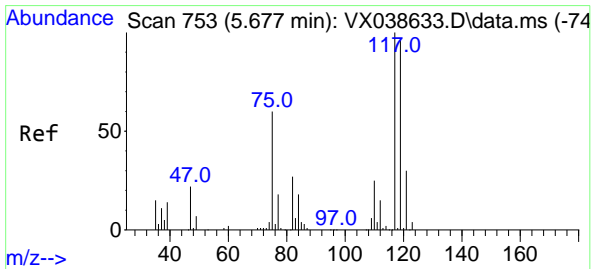
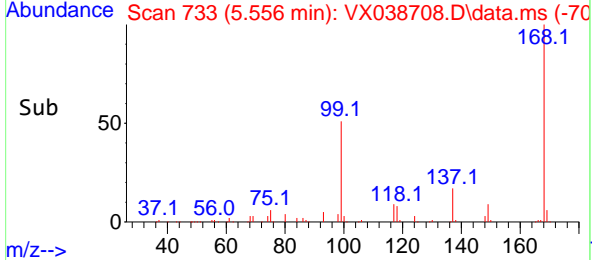
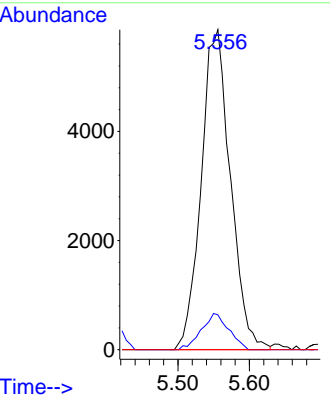
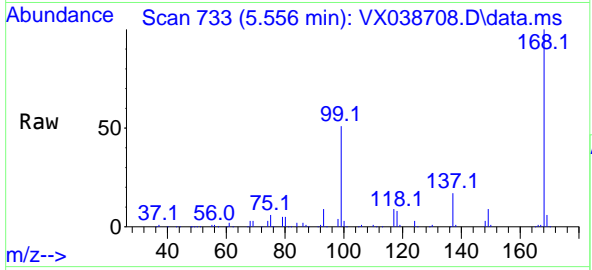


#36
 1,1-Dichloropropene
 Concen: 4.272 ug/l
 RT: 5.556 min Scan# 711
 Delta R.T. -0.140 min
 Lab File: VX038708.D
 Acq: 10 Nov 2023 06:35

Instrument : MSVOA_X
 ClientSampleId : FSND-MW-22R-20231102

Tgt Ion: 75 Resp: 16636

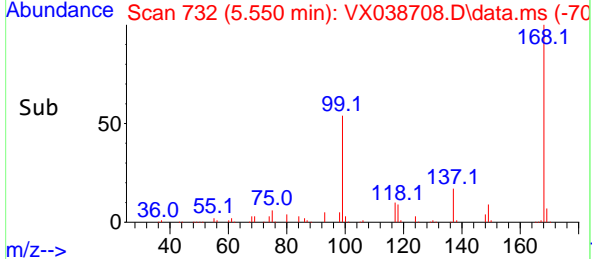
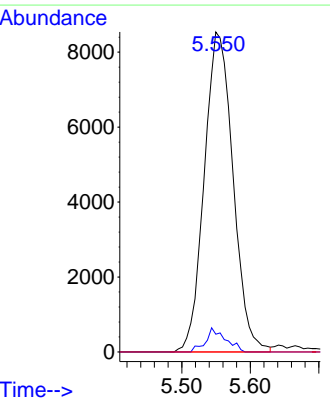
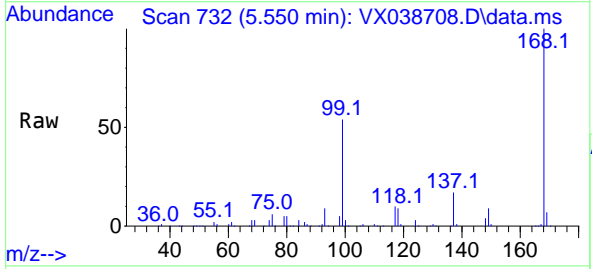
Ion	Ratio	Lower	Upper
75	100		
110	10.6	17.0	50.9#
77	0.0	24.7	37.1#

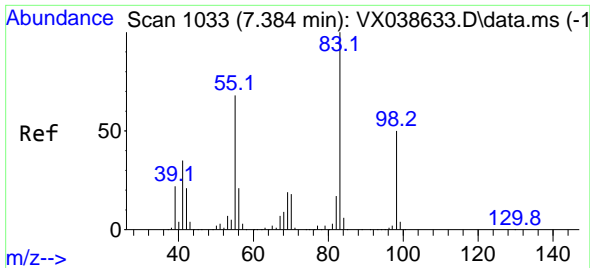


#38
 Carbon Tetrachloride
 Concen: 5.722 ug/l
 RT: 5.550 min Scan# 732
 Delta R.T. -0.128 min
 Lab File: VX038708.D
 Acq: 10 Nov 2023 06:35

Tgt Ion: 117 Resp: 24908

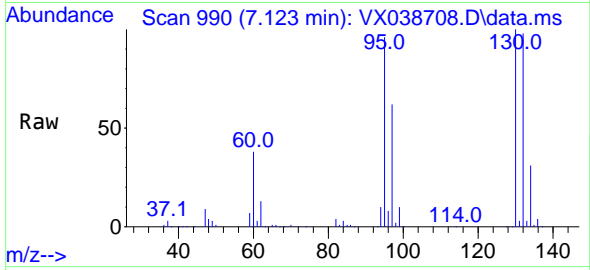
Ion	Ratio	Lower	Upper
117	100		
119	5.6	78.2	117.2#
121	0.0	24.4	36.6#



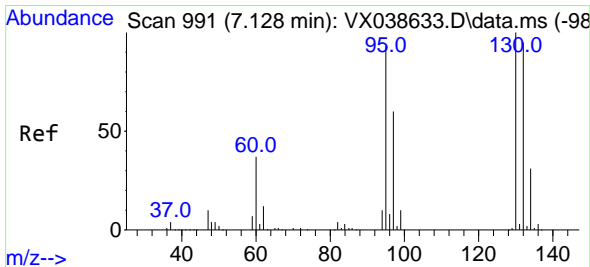
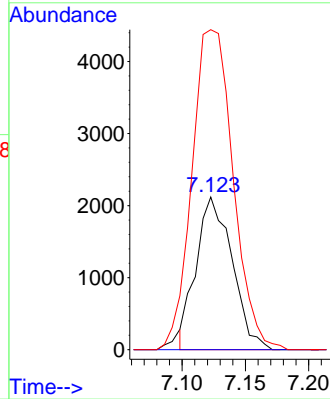
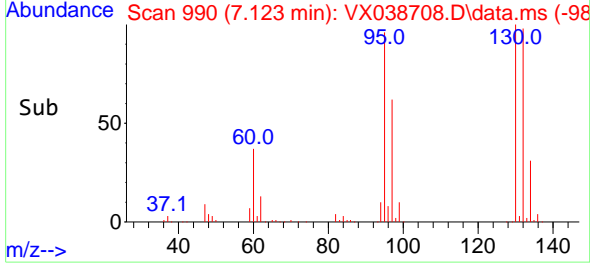


#39
 Methylcyclohexane
 Concen: 0.862 ug/l
 RT: 7.123 min Scan# 991
 Delta R.T. -0.262 min
 Lab File: VX038708.D
 Acq: 10 Nov 2023 06:35

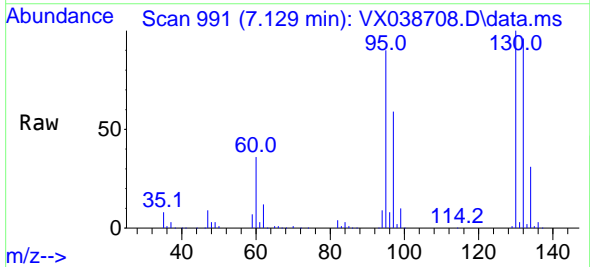
Instrument : MSVOA_X
 ClientSampleId : FSND-MW-22R-20231102



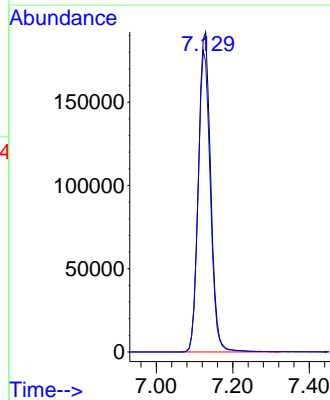
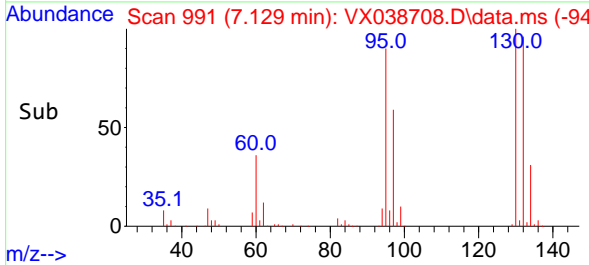
Tgt Ion: 83 Resp: 4194
 Ion Ratio Lower Upper
 83 100
 55 0.0 64.6 97.0#
 98 206.8 36.7 55.1#

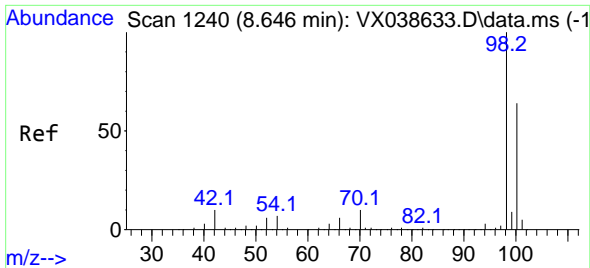


#44
 Trichloroethene
 Concen: 122.517 ug/l
 RT: 7.129 min Scan# 991
 Delta R.T. 0.000 min
 Lab File: VX038708.D
 Acq: 10 Nov 2023 06:35



Tgt Ion:130 Resp: 427520
 Ion Ratio Lower Upper
 130 100
 95 90.5 0.0 204.4

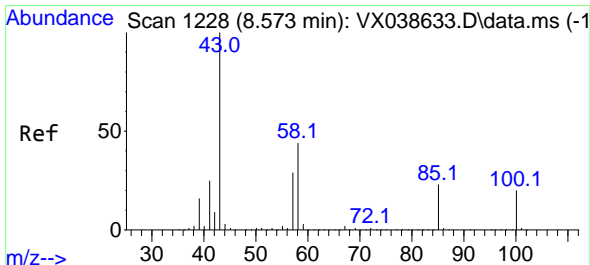
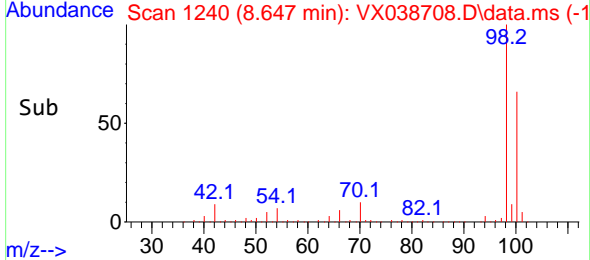
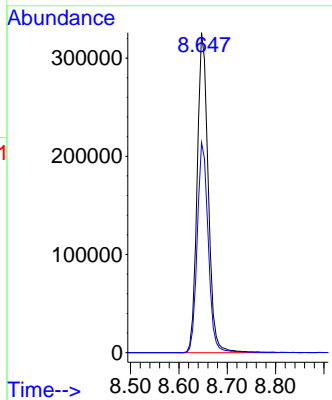
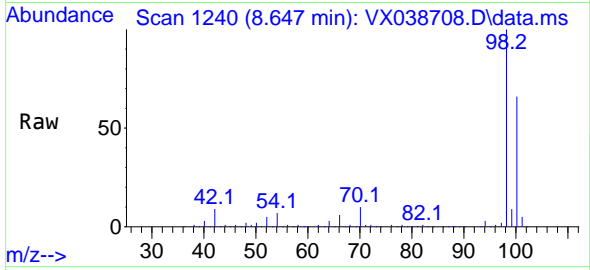




#50
 Toluene-d8
 Concen: 46.007 ug/l
 RT: 8.647 min Scan# 1240
 Delta R.T. 0.000 min
 Lab File: VX038708.D
 Acq: 10 Nov 2023 06:35

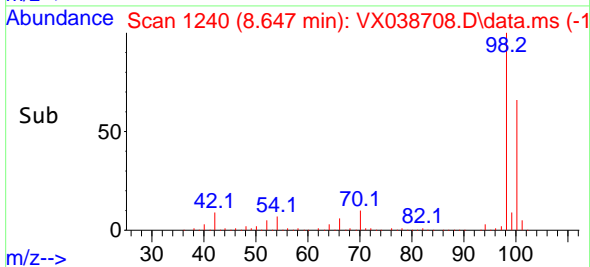
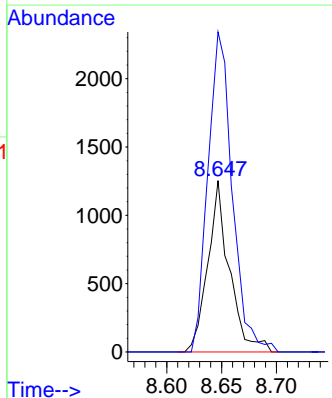
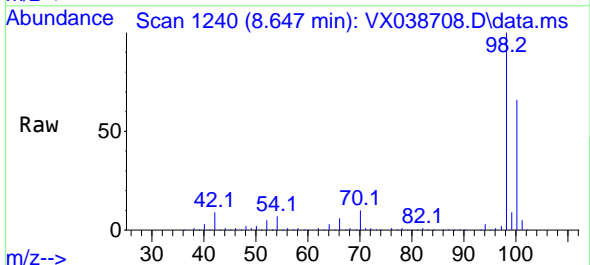
Instrument : MSVOA_X
 ClientSampleId : FSND-MW-22R-20231102

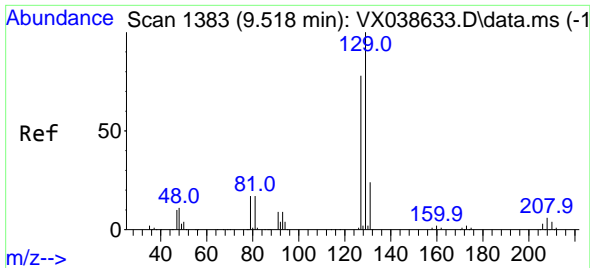
Tgt Ion: 98 Resp: 516054
 Ion Ratio Lower Upper
 98 100
 100 65.5 53.1 79.7



#51
 4-Methyl-2-Pentanone
 Concen: 0.432 ug/l
 RT: 8.647 min Scan# 1240
 Delta R.T. 0.073 min
 Lab File: VX038708.D
 Acq: 10 Nov 2023 06:35

Tgt Ion: 43 Resp: 1720
 Ion Ratio Lower Upper
 43 100
 58 210.5 30.4 45.6#

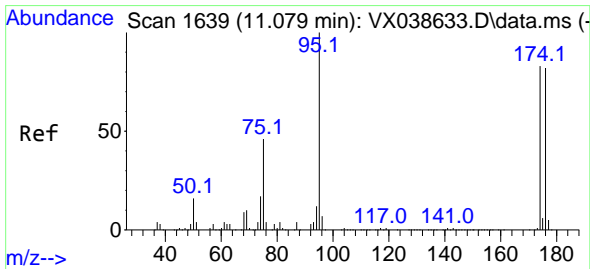
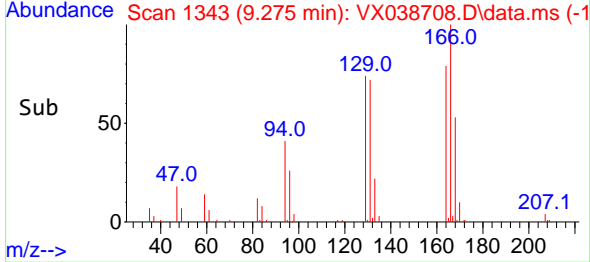
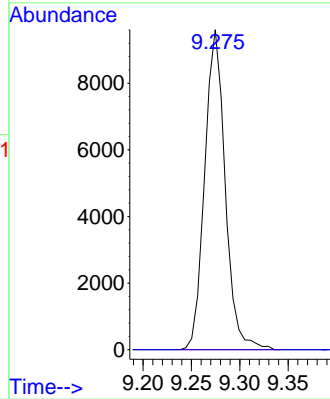
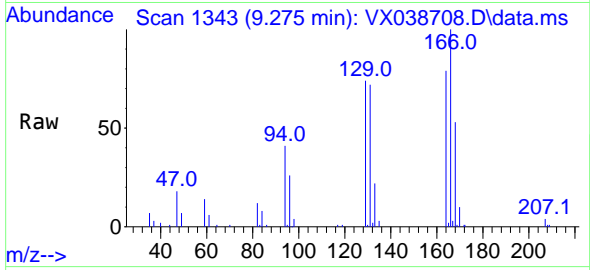




#60
 Dibromochloromethane
 Concen: 4.050 ug/l
 RT: 9.275 min Scan# 11
 Delta R.T. -0.244 min
 Lab File: VX038708.D
 Acq: 10 Nov 2023 06:35

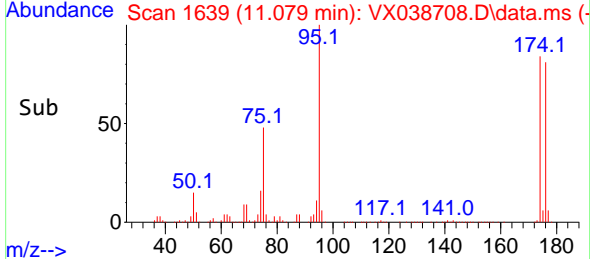
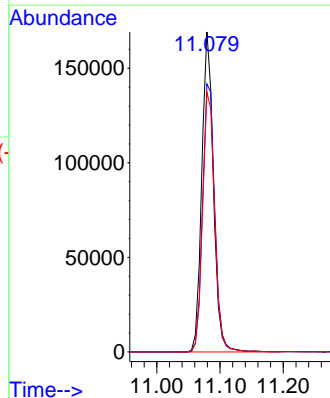
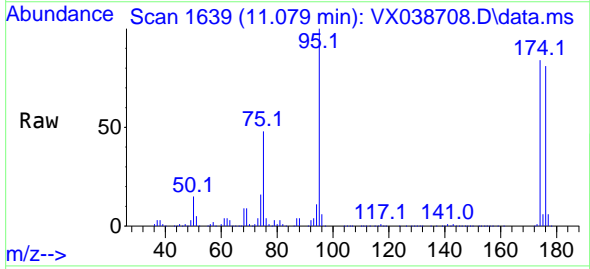
Instrument : MSVOA_X
 ClientSampleId : FSND-MW-22R-20231102

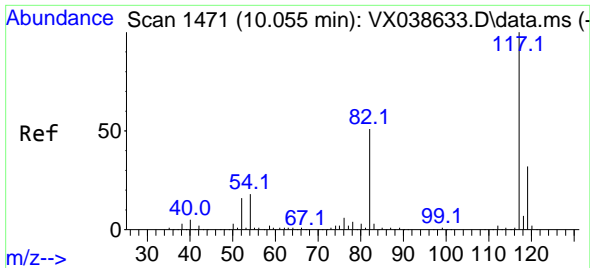
Tgt Ion:129 Resp: 14171
 Ion Ratio Lower Upper
 129 100
 127 0.0 38.8 116.4#



#62
 4-Bromofluorobenzene
 Concen: 49.901 ug/l
 RT: 11.079 min Scan# 1639
 Delta R.T. 0.000 min
 Lab File: VX038708.D
 Acq: 10 Nov 2023 06:35

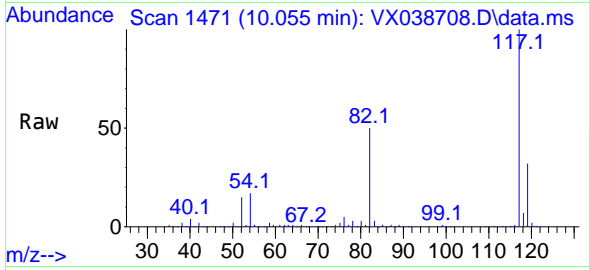
Tgt Ion: 95 Resp: 217013
 Ion Ratio Lower Upper
 95 100
 174 88.7 0.0 135.6
 176 84.3 0.0 131.0



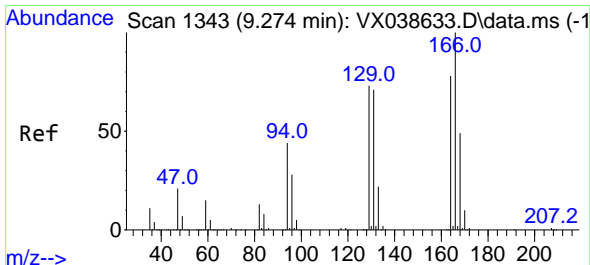
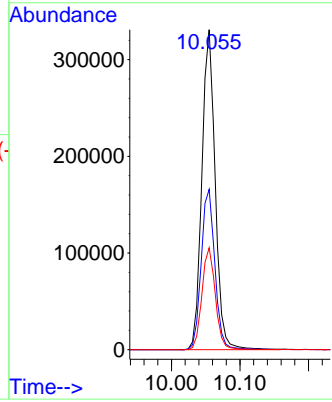
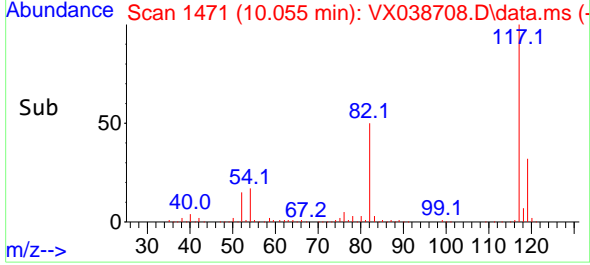


#63
 Chlorobenzene-d5
 Concen: 50.000 ug/l
 RT: 10.055 min Scan# 1471
 Delta R.T. 0.000 min
 Lab File: VX038708.D
 Acq: 10 Nov 2023 06:35

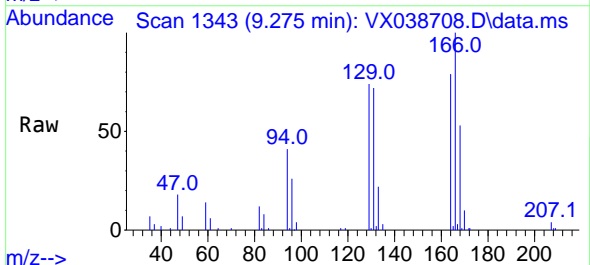
Instrument : MSVOA_X
 ClientSampleId : FSND-MW-22R-20231102



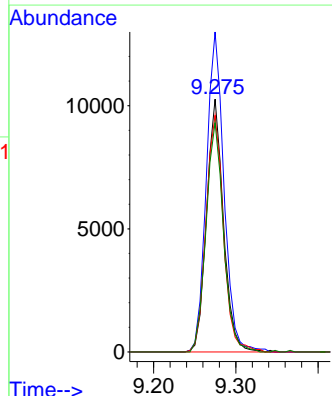
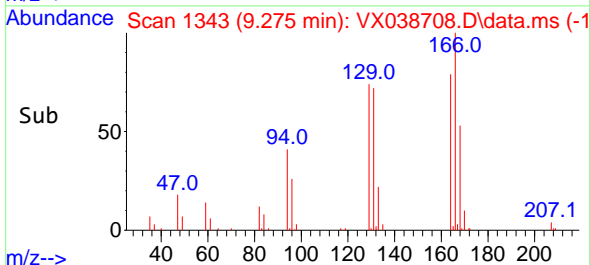
Tgt Ion:117 Resp: 449507
 Ion Ratio Lower Upper
 117 100
 82 50.1 46.2 69.4
 119 31.8 25.5 38.3

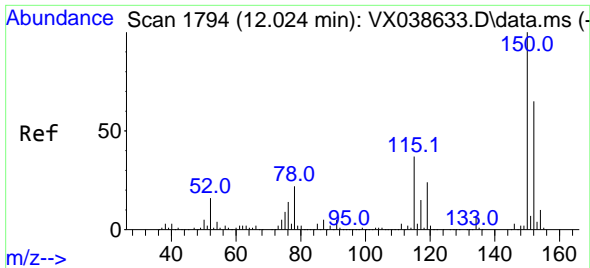


#64
 Tetrachloroethene
 Concen: 4.361 ug/l
 RT: 9.275 min Scan# 1343
 Delta R.T. 0.000 min
 Lab File: VX038708.D
 Acq: 10 Nov 2023 06:35



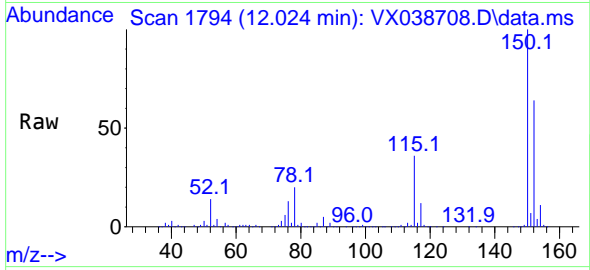
Tgt Ion:164 Resp: 14675
 Ion Ratio Lower Upper
 164 100
 166 126.6 102.7 154.1
 129 93.6 80.4 120.6
 131 90.7 76.5 114.7



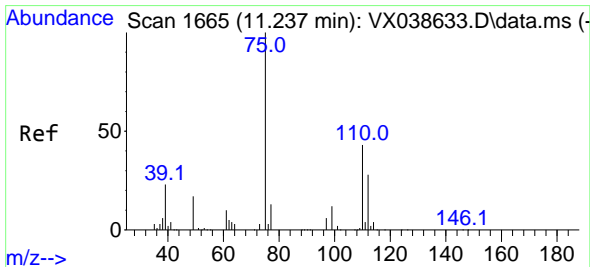
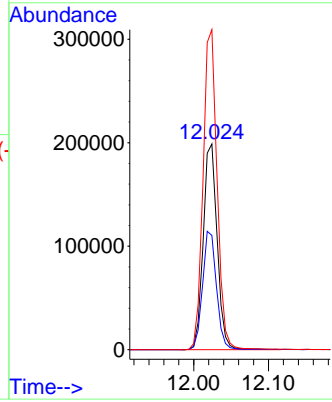
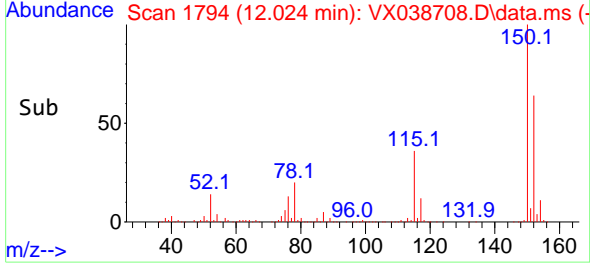


#72
 1,4-Dichlorobenzene-d4
 Concen: 50.000 ug/l
 RT: 12.024 min Scan# 11
 Delta R.T. 0.000 min
 Lab File: VX038708.D
 Acq: 10 Nov 2023 06:35

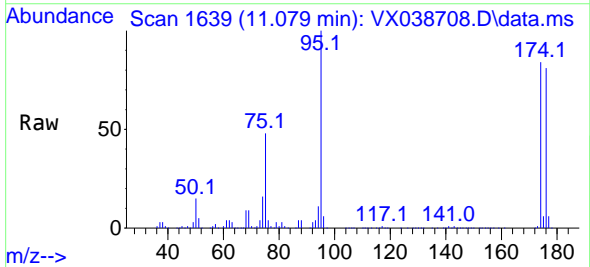
Instrument :
 MSVOA_X
 ClientSampleId :
 FSND-MW-22R-20231102



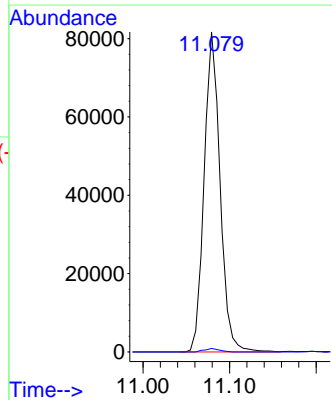
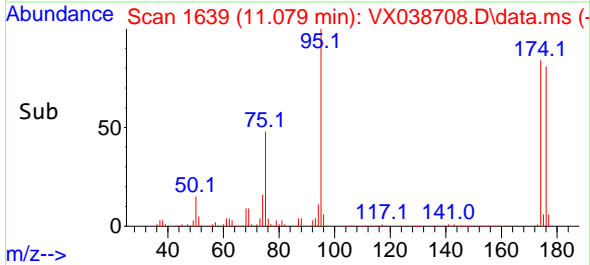
Tgt Ion:152 Resp: 257532
 Ion Ratio Lower Upper
 152 100
 115 57.6 43.3 129.9
 150 156.6 0.0 345.0

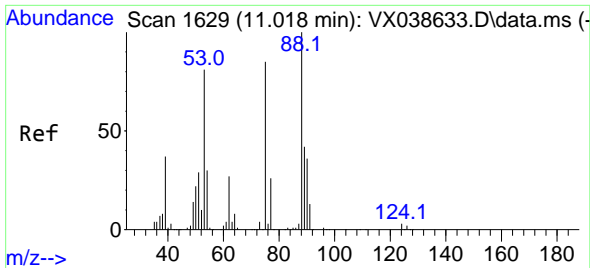


#76
 1,2,3-Trichloropropane
 Concen: 20.460 ug/l
 RT: 11.079 min Scan# 1639
 Delta R.T. -0.158 min
 Lab File: VX038708.D
 Acq: 10 Nov 2023 06:35



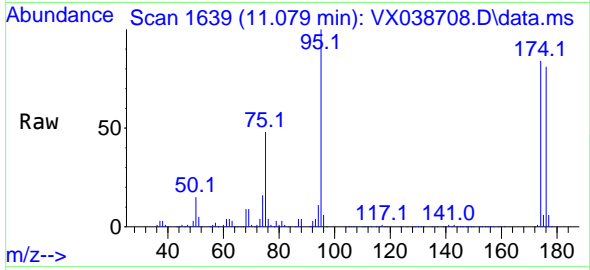
Tgt Ion: 75 Resp: 104353
 Ion Ratio Lower Upper
 75 100
 77 1.0 19.1 57.5#





#81
 trans-1,4-Dichloro-2-butene
 Concen: 62.373 ug/l
 RT: 11.079 min Scan# 10
 Delta R.T. 0.061 min
 Lab File: VX038708.D
 Acq: 10 Nov 2023 06:35

Instrument : MSVOA_X
 ClientSampleId : FSND-MW-22R-20231102



Tgt Ion: 75 Resp: 104353

Ion	Ratio	Lower	Upper
75	100		
53	0.0	90.5	135.7#
89	0.0	36.9	55.3#

