

Data Path : Z:\voasrv\HPCHEM1\MSVOA\_X\Data\VX110923\  
 Data File : VX038691.D  
 Acq On : 09 Nov 2023 19:20  
 Operator : JC/MD  
 Sample : 05241-13  
 Misc : 5.0mL/MSVOA\_X/WATER  
 ALS Vial : 24 Sample Multiplier: 1

Instrument :  
 MSVOA\_X  
 ClientSampleId :  
 FSND-MW-24-20231102

Quant Time: Nov 10 03:44:44 2023  
 Quant Method : Z:\voasrv\HPCHEM1\MSVOA\_X\Method\82X110723W.M  
 Quant Title : SW846 8260  
 QLast Update : Wed Nov 08 03:19:07 2023  
 Response via : Initial Calibration

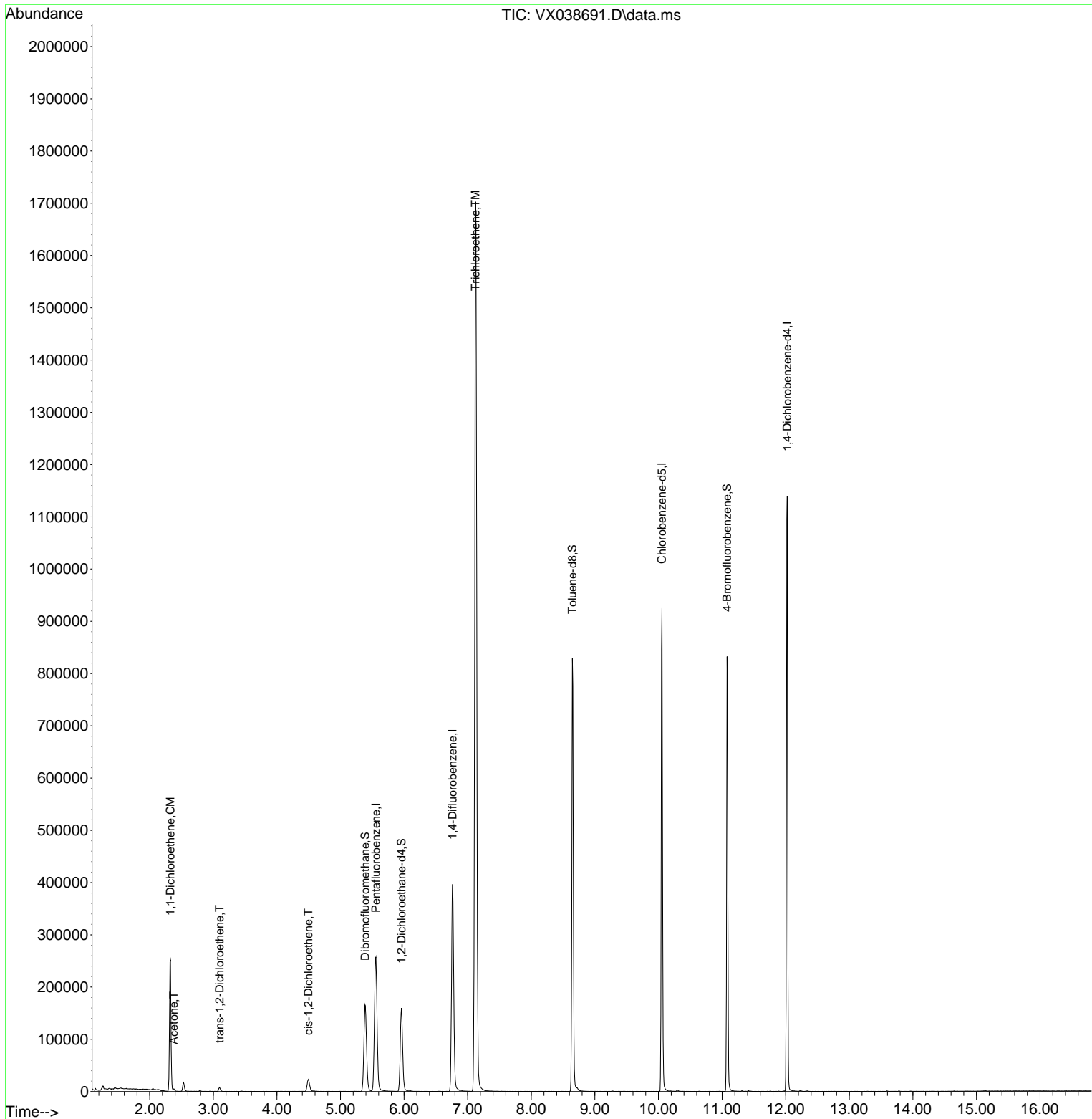
Compound	R.T.	QIon	Response	Conc	Units	Dev(Min)
-----						
Internal Standards						
1) Pentafluorobenzene	5.556	168	270665	50.000	ug/l	# 0.00
34) 1,4-Difluorobenzene	6.763	114	447244	50.000	ug/l	0.00
63) Chlorobenzene-d5	10.055	117	467106	50.000	ug/l	0.00
72) 1,4-Dichlorobenzene-d4	12.024	152	264399	50.000	ug/l	0.00
System Monitoring Compounds						
33) 1,2-Dichloroethane-d4	5.958	65	156759	46.520	ug/l	0.00
Spiked Amount	50.000	Range 78 - 117	Recovery	=	93.040%	
35) Dibromofluoromethane	5.385	113	145070	45.036	ug/l	0.00
Spiked Amount	50.000	Range 75 - 124	Recovery	=	90.080%	
50) Toluene-d8	8.647	98	534614	46.381	ug/l	0.00
Spiked Amount	50.000	Range 92 - 112	Recovery	=	92.760%	
62) 4-Bromofluorobenzene	11.079	95	226087	50.590	ug/l	0.00
Spiked Amount	50.000	Range 83 - 123	Recovery	=	101.180%	
Target Compounds						
						Qvalue
12) 1,1-Dichloroethene	2.325	96	90978	36.017	ug/l	# 76
16) Acetone	2.380	43	4341	3.059	ug/l	99
21) trans-1,2-Dichloroethene	3.099	96	3274	1.191	ug/l	# 86
27) cis-1,2-Dichloroethene	4.495	96	16291	5.130	ug/l	77
44) Trichloroethene	7.123	130	712811	198.782	ug/l	93
-----						

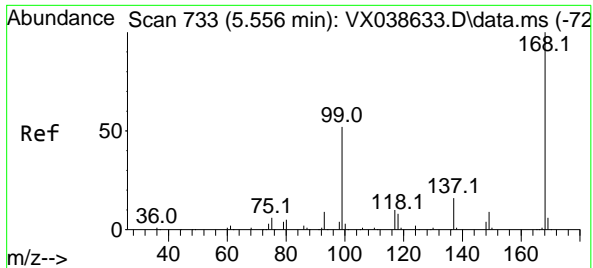
(#) = qualifier out of range (m) = manual integration (+) = signals summed

Data Path : Z:\voasrv\HPCHEM1\MSVOA\_X\Data\VX110923\  
 Data File : VX038691.D  
 Acq On : 09 Nov 2023 19:20  
 Operator : JC/MD  
 Sample : 05241-13  
 Misc : 5.0mL/MSVOA\_X/WATER  
 ALS Vial : 24 Sample Multiplier: 1

Instrument :  
 MSVOA\_X  
 ClientSampleId :  
 FSND-MW-24-20231102

Quant Time: Nov 10 03:44:44 2023  
 Quant Method : Z:\voasrv\HPCHEM1\MSVOA\_X\Method\82X110723W.M  
 Quant Title : SW846 8260  
 QLast Update : Wed Nov 08 03:19:07 2023  
 Response via : Initial Calibration

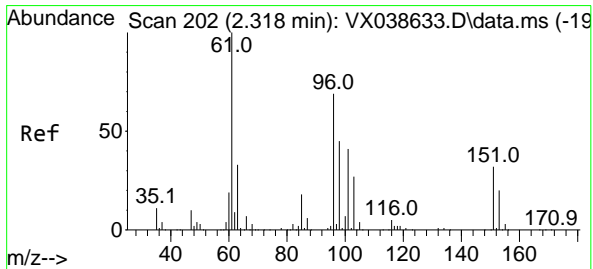
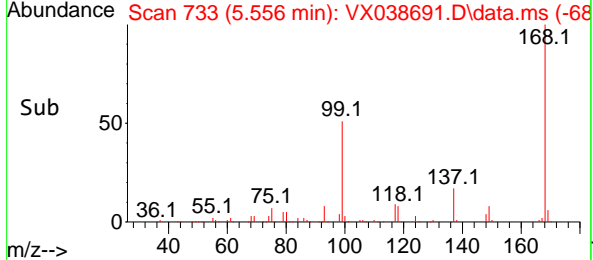
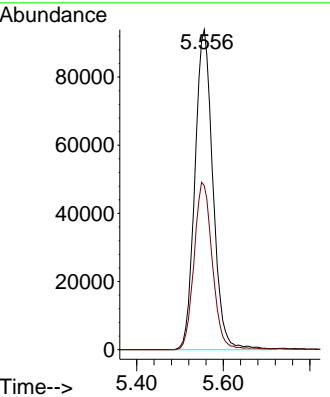
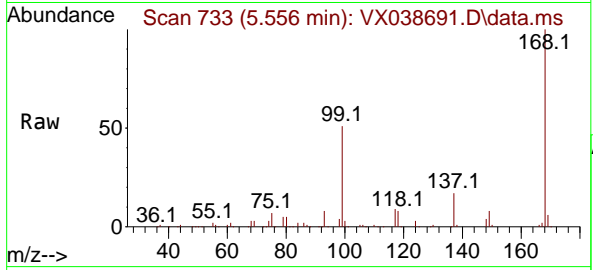




#1  
 Pentafluorobenzene  
 Concen: 50.000 ug/l  
 RT: 5.556 min Scan# 71  
 Delta R.T. -0.000 min  
 Lab File: VX038691.D  
 Acq: 09 Nov 2023 19:20

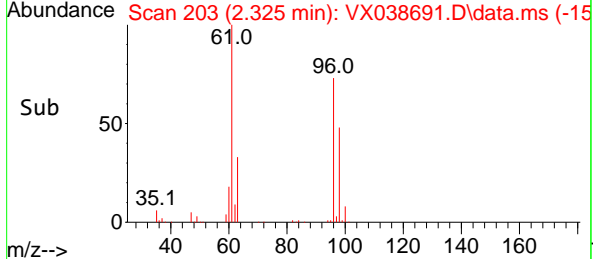
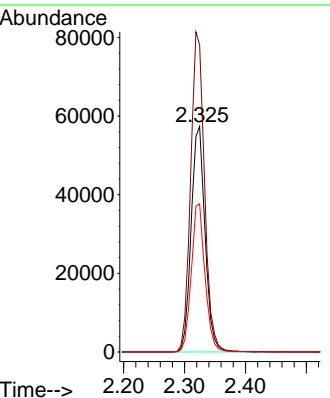
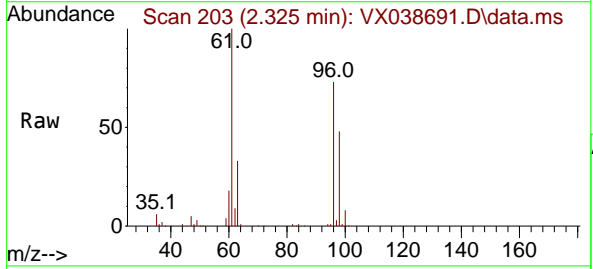
Instrument : MSVOA\_X  
 ClientSampleId : FSND-MW-24-20231102

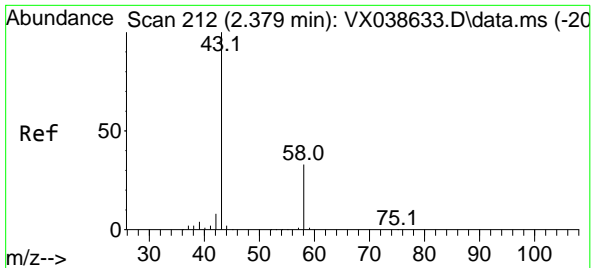
Tgt Ion:168 Resp: 270665  
 Ion Ratio Lower Upper  
 168 100  
 99 51.3 56.6 85.0#



#12  
 1,1-Dichloroethene  
 Concen: 36.017 ug/l  
 RT: 2.325 min Scan# 203  
 Delta R.T. 0.006 min  
 Lab File: VX038691.D  
 Acq: 09 Nov 2023 19:20

Tgt Ion: 96 Resp: 90978  
 Ion Ratio Lower Upper  
 96 100  
 61 136.2 144.6 216.8#  
 98 65.7 50.4 75.6

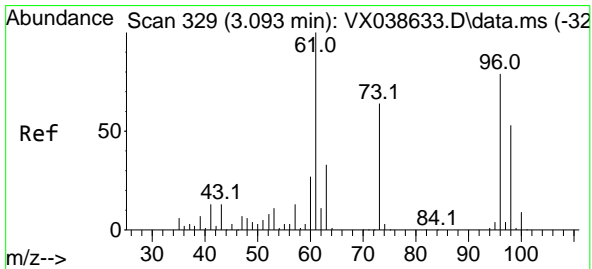
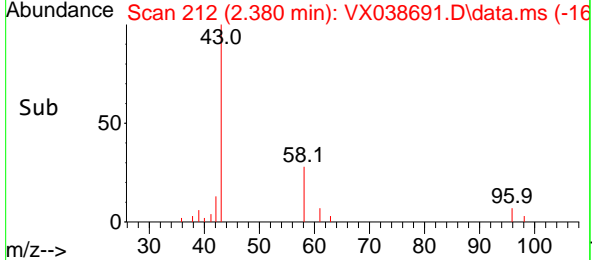
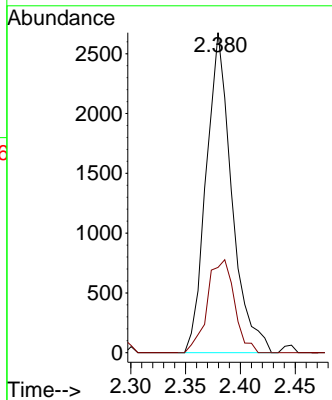
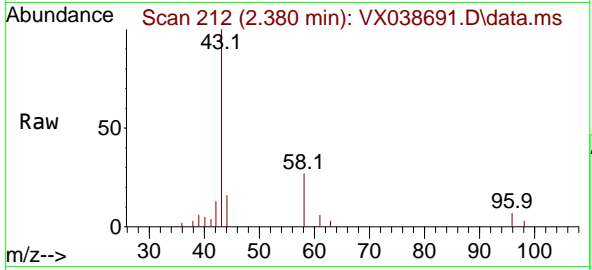




#16  
 Acetone  
 Concen: 3.059 ug/l  
 RT: 2.380 min Scan# 211  
 Delta R.T. 0.000 min  
 Lab File: VX038691.D  
 Acq: 09 Nov 2023 19:20

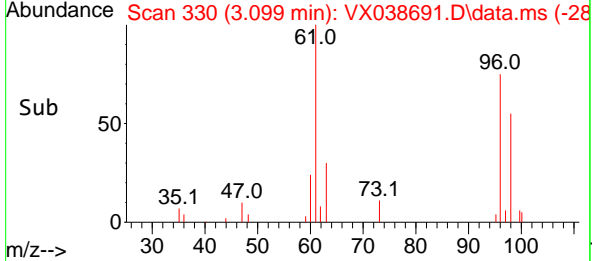
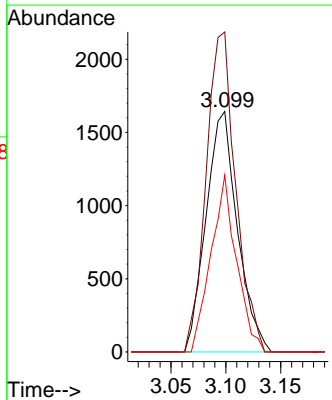
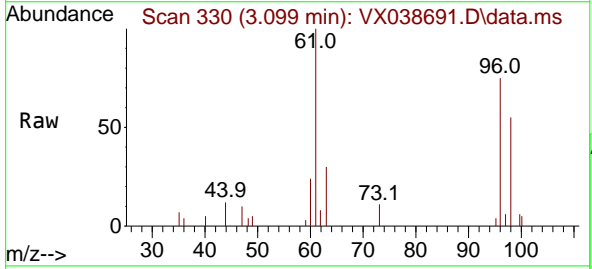
Instrument : MSVOA\_X  
 ClientSampleId : FSND-MW-24-20231102

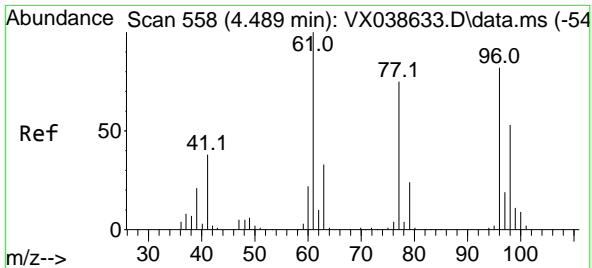
Tgt Ion	Resp	Lower	Upper
43	100		
58	26.6	21.9	32.9



#21  
 trans-1,2-Dichloroethene  
 Concen: 1.191 ug/l  
 RT: 3.099 min Scan# 330  
 Delta R.T. 0.006 min  
 Lab File: VX038691.D  
 Acq: 09 Nov 2023 19:20

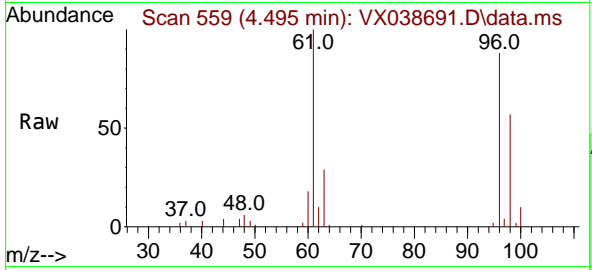
Tgt Ion	Resp	Lower	Upper
96	100		
61	133.0	119.2	178.8
98	73.5	48.7	73.1#





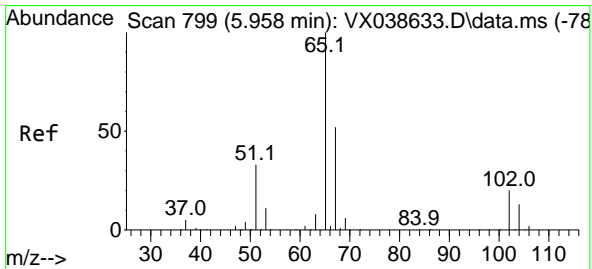
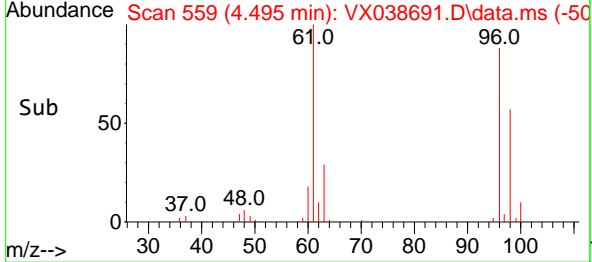
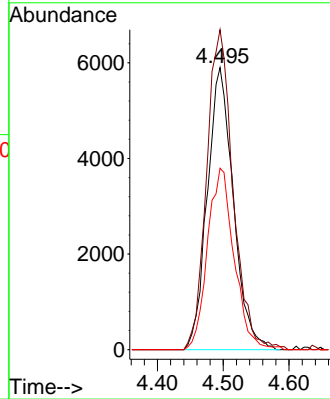
#27  
 cis-1,2-Dichloroethene  
 Concen: 5.130 ug/l  
 RT: 4.495 min Scan# 511  
 Delta R.T. 0.006 min  
 Lab File: VX038691.D  
 Acq: 09 Nov 2023 19:20

Instrument : MSVOA\_X  
 ClientSampleId : FSND-MW-24-20231102



Tgt Ion: 96 Resp: 16291

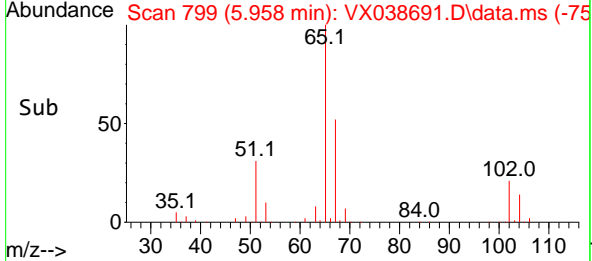
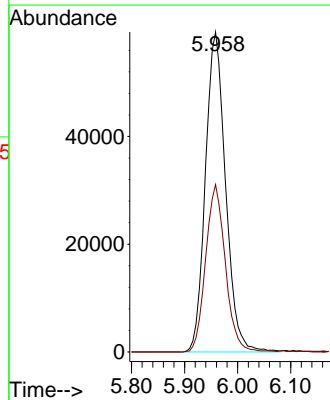
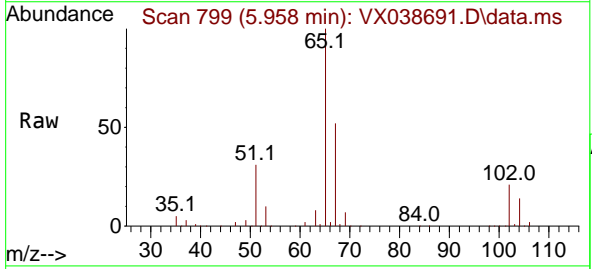
Ion	Ratio	Lower	Upper
96	100		
61	114.7	0.0	312.2
98	65.6	0.0	129.0

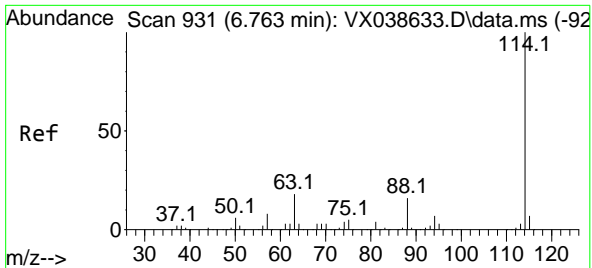


#33  
 1,2-Dichloroethane-d4  
 Concen: 46.520 ug/l  
 RT: 5.958 min Scan# 799  
 Delta R.T. 0.000 min  
 Lab File: VX038691.D  
 Acq: 09 Nov 2023 19:20

Tgt Ion: 65 Resp: 156759

Ion	Ratio	Lower	Upper
65	100		
67	51.2	0.0	100.2

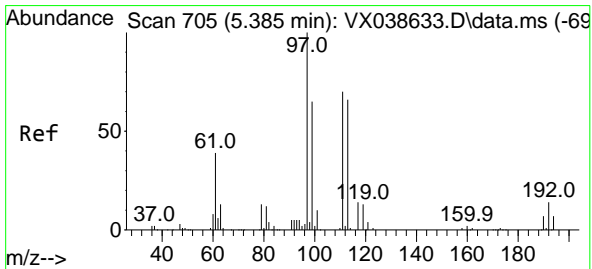
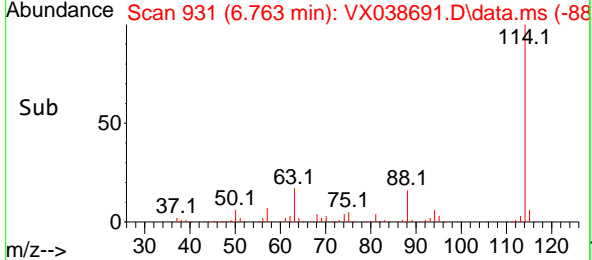
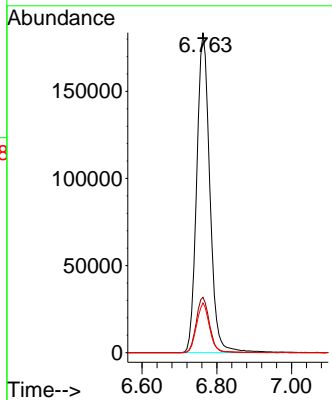
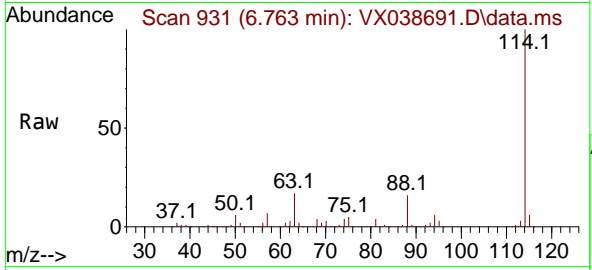




#34  
 1,4-Difluorobenzene  
 Concen: 50.000 ug/l  
 RT: 6.763 min Scan# 911  
 Delta R.T. 0.000 min  
 Lab File: VX038691.D  
 Acq: 09 Nov 2023 19:20

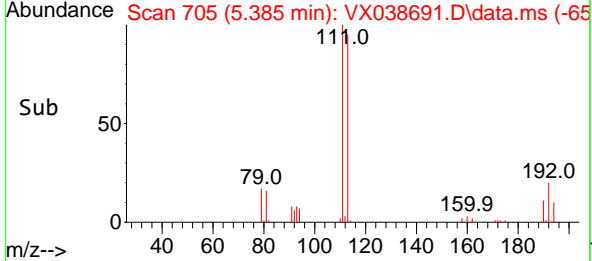
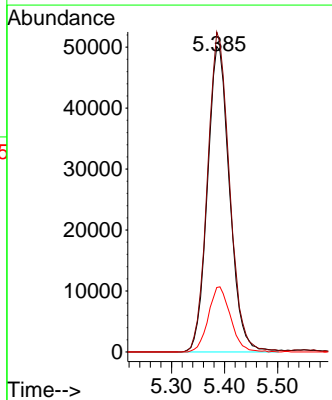
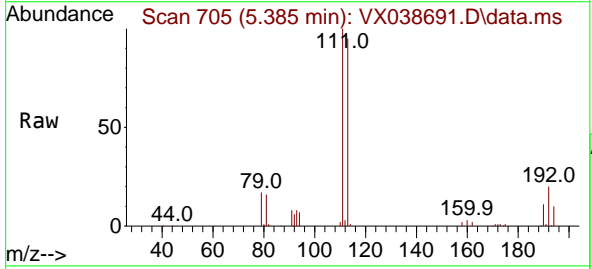
Instrument : MSVOA\_X  
 ClientSampleId : FSND-MW-24-20231102

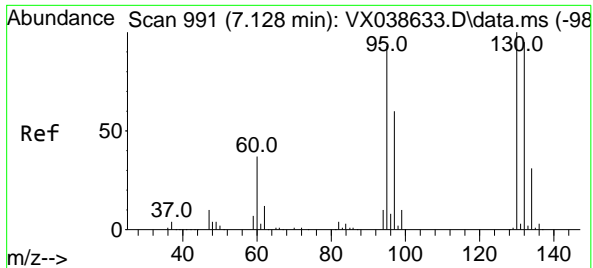
Tgt Ion	Resp	Ion Ratio	Lower	Upper
114	447244	100		
63		17.3	0.0	45.0
88		15.5	0.0	36.6



#35  
 Dibromofluoromethane  
 Concen: 45.036 ug/l  
 RT: 5.385 min Scan# 705  
 Delta R.T. 0.000 min  
 Lab File: VX038691.D  
 Acq: 09 Nov 2023 19:20

Tgt Ion	Resp	Ion Ratio	Lower	Upper
113	145070	100		
111		104.7	82.9	124.3
192		21.4	13.3	19.9

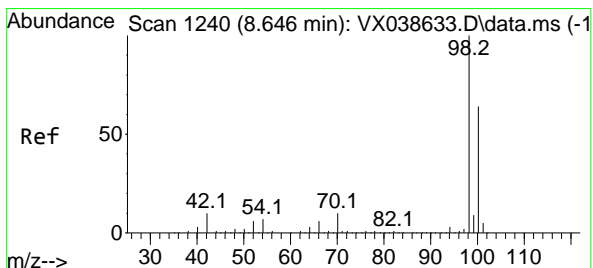
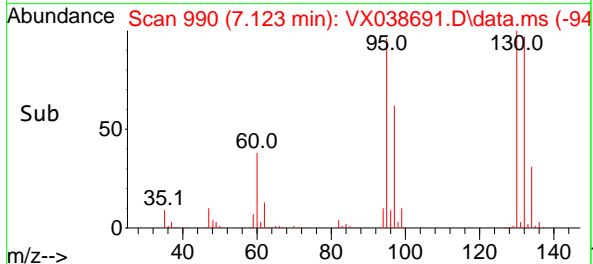
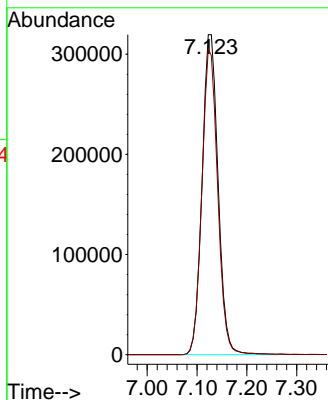
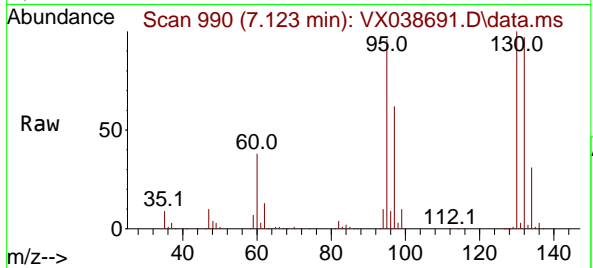




#44  
 Trichloroethene  
 Concen: 198.782 ug/l  
 RT: 7.123 min Scan# 94  
 Delta R.T. -0.006 min  
 Lab File: VX038691.D  
 Acq: 09 Nov 2023 19:20

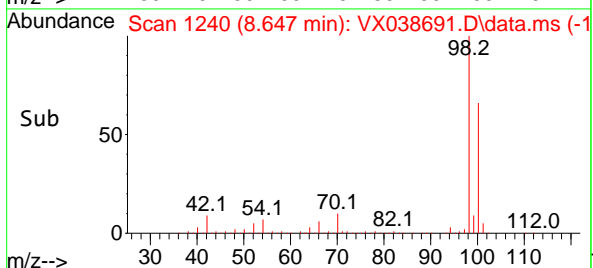
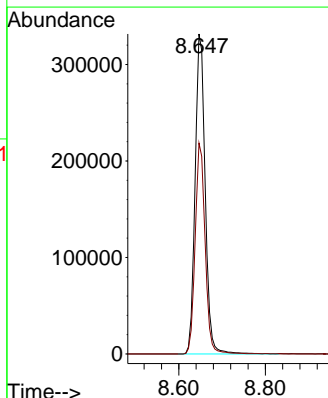
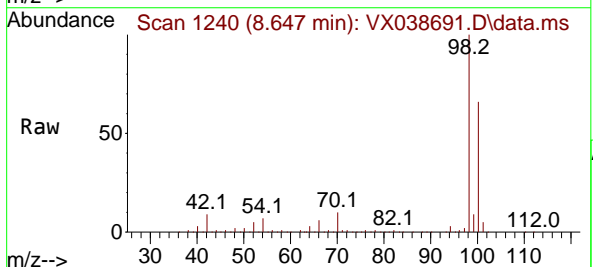
Instrument : MSVOA\_X  
 ClientSampleId : FSND-MW-24-20231102

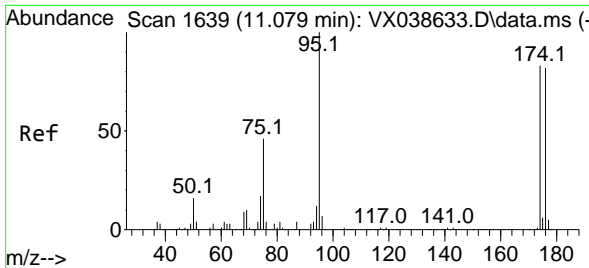
Tgt Ion:130 Resp: 712811  
 Ion Ratio Lower Upper  
 130 100  
 95 95.6 0.0 204.4



#50  
 Toluene-d8  
 Concen: 46.381 ug/l  
 RT: 8.647 min Scan# 1240  
 Delta R.T. 0.000 min  
 Lab File: VX038691.D  
 Acq: 09 Nov 2023 19:20

Tgt Ion: 98 Resp: 534614  
 Ion Ratio Lower Upper  
 98 100  
 100 65.2 53.1 79.7



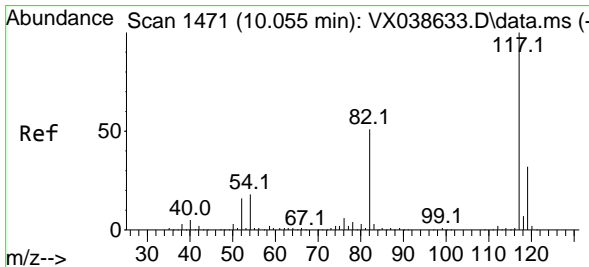
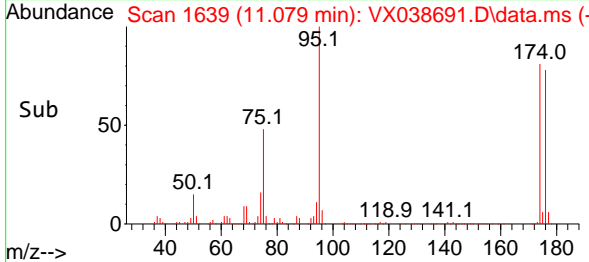
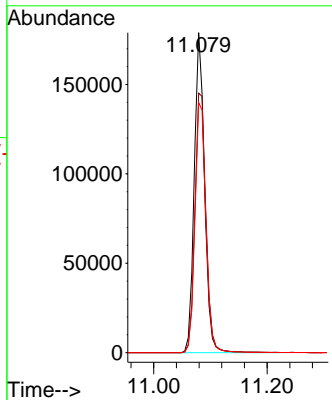
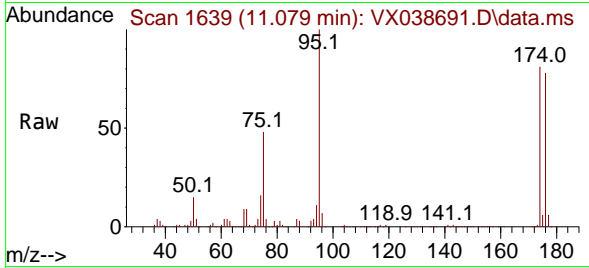


#62  
 4-Bromofluorobenzene  
 Concen: 50.590 ug/l  
 RT: 11.079 min Scan# 1639  
 Delta R.T. 0.000 min  
 Lab File: VX038691.D  
 Acq: 09 Nov 2023 19:20

Instrument : MSVOA\_X  
 ClientSampleId : FSND-MW-24-20231102

Tgt Ion: 95 Resp: 226087

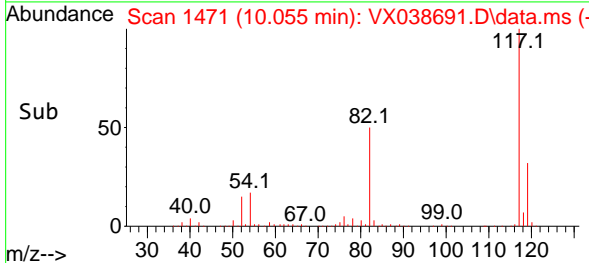
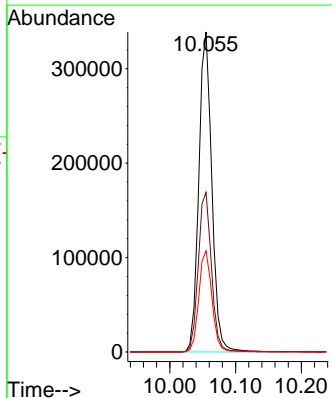
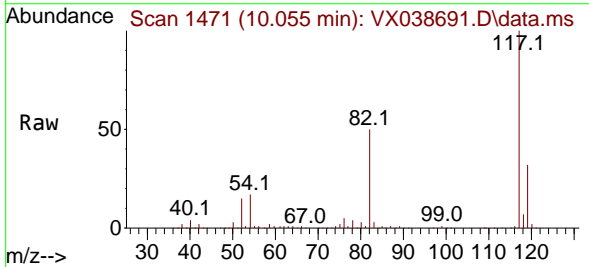
Ion	Ratio	Lower	Upper
95	100		
174	87.2	0.0	135.6
176	82.8	0.0	131.0



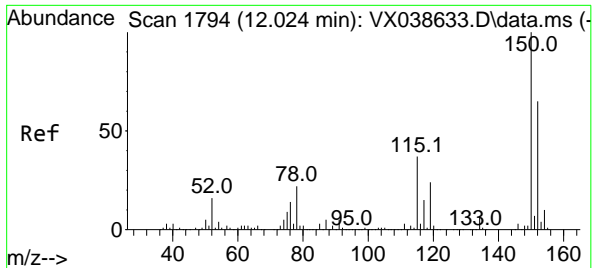
#63  
 Chlorobenzene-d5  
 Concen: 50.000 ug/l  
 RT: 10.055 min Scan# 1471  
 Delta R.T. 0.000 min  
 Lab File: VX038691.D  
 Acq: 09 Nov 2023 19:20

Tgt Ion: 117 Resp: 467106

Ion	Ratio	Lower	Upper
117	100		
82	49.8	46.2	69.4
119	31.6	25.5	38.3

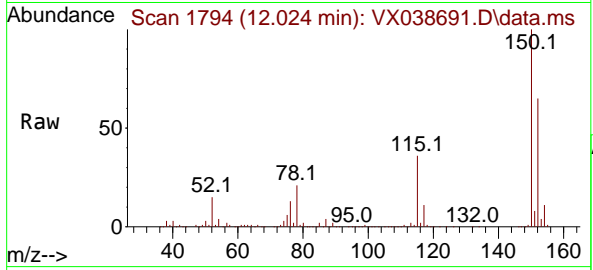






#72  
 1,4-Dichlorobenzene-d4  
 Concen: 50.000 ug/l  
 RT: 12.024 min Scan# 11  
 Delta R.T. 0.000 min  
 Lab File: VX038691.D  
 Acq: 09 Nov 2023 19:20

Instrument : MSVOA\_X  
 ClientSampleId : FSND-MW-24-20231102



Tgt Ion:152 Resp: 264399

Ion	Ratio	Lower	Upper
152	100		
115	57.3	43.3	129.9
150	155.6	0.0	345.0

