

Data Path : Z:\voasrv\HPCHEM1\MSVOA\_X\Data\VX111023\  
 Data File : VX038742.D  
 Acq On : 10 Nov 2023 20:24  
 Operator : JC/MD  
 Sample : 05316-01  
 Misc : 5.0mL/MSVOA\_X/WATER  
 ALS Vial : 26 Sample Multiplier: 1

Instrument :  
 MSVOA\_X  
 ClientSampleId :

Quant Time: Nov 11 02:00:20 2023  
 Quant Method : Z:\voasrv\HPCHEM1\MSVOA\_X\Method\82X110723W.M  
 Quant Title : SW846 8260  
 QLast Update : Wed Nov 08 03:19:07 2023  
 Response via : Initial Calibration

Compound	R.T.	QIon	Response	Conc	Units	Dev(Min)
Internal Standards						
1) Pentafluorobenzene	5.556	168	258586	50.000	ug/l	# 0.00
34) 1,4-Difluorobenzene	6.763	114	435489	50.000	ug/l	0.00
63) Chlorobenzene-d5	10.055	117	459549	50.000	ug/l	0.00
72) 1,4-Dichlorobenzene-d4	12.024	152	270801	50.000	ug/l	0.00
System Monitoring Compounds						
33) 1,2-Dichloroethane-d4	5.958	65	151387	47.025	ug/l	0.00
Spiked Amount	50.000	Range	78 - 117	Recovery	=	94.040%
35) Dibromofluoromethane	5.385	113	142609	45.467	ug/l	0.00
Spiked Amount	50.000	Range	75 - 124	Recovery	=	90.940%
50) Toluene-d8	8.647	98	520854	46.407	ug/l	0.00
Spiked Amount	50.000	Range	92 - 112	Recovery	=	92.820%
62) 4-Bromofluorobenzene	11.079	95	228046	52.405	ug/l	0.00
Spiked Amount	50.000	Range	83 - 123	Recovery	=	104.820%
Target Compounds						
						Qvalue
11) Tert butyl alcohol	2.953	59	27747	42.162	ug/l	# 92
13) Acrolein	2.233	56	538	1.079	ug/l	# 46
14) Allyl chloride	2.636	41	1310	0.379	ug/l	# 44
15) Acrylonitrile	2.959	53	354	0.255	ug/l	# 7
16) Acetone	2.374	43	269219	198.567	ug/l	# 89
20) Methylene Chloride	2.794	84	2219	0.812	ug/l	# 76
25) 2-Butanone	4.556	43	53490	27.234	ug/l	# 89
29) Tetrahydrofuran	5.026	42	431	0.353	ug/l	# 67
36) 1,1-Dichloropropene	5.550	75	16868	4.329	ug/l	# 51
37) Ethyl Acetate	4.556	43	53490	13.447	ug/l	# 69
38) Carbon Tetrachloride	5.556	117	24486	5.622	ug/l	# 15
40) Benzene	6.038	78	91168	8.124	ug/l	100
42) 1,2-Dichloroethane	6.038	62	874	0.216	ug/l	# 77
43) Isopropyl Acetate	6.330	43	2941	0.481	ug/l	# 74
44) Trichloroethene	7.129	130	3660	1.048	ug/l	91
48) Methyl methacrylate	7.690	41	1998	0.678	ug/l	# 44
49) 1,4-Dioxane	7.671	88	1169	17.423	ug/l	# 62
51) 4-Methyl-2-Pentanone	8.574	43	2895	0.727	ug/l	# 85
52) Toluene	8.720	92	90751	12.345	ug/l	96
55) 1,1,2-Trichloroethane	9.019	97	2578	0.826	ug/l	# 21
58) 2-Chloroethyl Vinyl ether	8.226	63	772	0.360	ug/l	# 47
59) 2-Hexanone	9.439	43	2755	0.855	ug/l	95
67) Ethyl Benzene	10.195	91	32200	2.035	ug/l	96
68) m/p-Xylenes	10.299	106	51872	8.259	ug/l	94
69) o-Xylene	10.640	106	31475	5.154	ug/l	94
70) Styrene	10.653	104	298430	29.607	ug/l	# 89
76) 1,2,3-Trichloropropane	11.079	75	109475	20.412	ug/l	# 39
78) n-propylbenzene	11.311	91	6259	0.324	ug/l	# 74
79) 2-Chlorotoluene	11.378	91	3310	0.286	ug/l	# 54
80) 1,3,5-Trimethylbenzene	11.451	105	14251	0.997	ug/l	100
81) trans-1,4-Dichloro-2-b...	11.079	75	109475	62.245	ug/l	# 5
84) 1,2,4-Trimethylbenzene	11.750	105	65738	4.635	ug/l	81
85) sec-Butylbenzene	11.750	105	65738	3.636	ug/l	# 57
90) Hexachloroethane	12.555	117	1058	0.406	ug/l	# 17
95) Naphthalene	13.774	128	344036	18.730	ug/l	100

Data Path : Z:\voasrv\HPCHEM1\MSVOA\_X\Data\VX111023\  
Data File : VX038742.D  
Acq On : 10 Nov 2023 20:24  
Operator : JC/MD  
Sample : 05316-01  
Misc : 5.0mL/MSVOA\_X/WATER  
ALS Vial : 26 Sample Multiplier: 1

Instrument :  
MSVOA\_X  
ClientSampleId :

Quant Time: Nov 11 02:00:20 2023  
Quant Method : Z:\voasrv\HPCHEM1\MSVOA\_X\Method\82X110723W.M  
Quant Title : SW846 8260  
QLast Update : Wed Nov 08 03:19:07 2023  
Response via : Initial Calibration

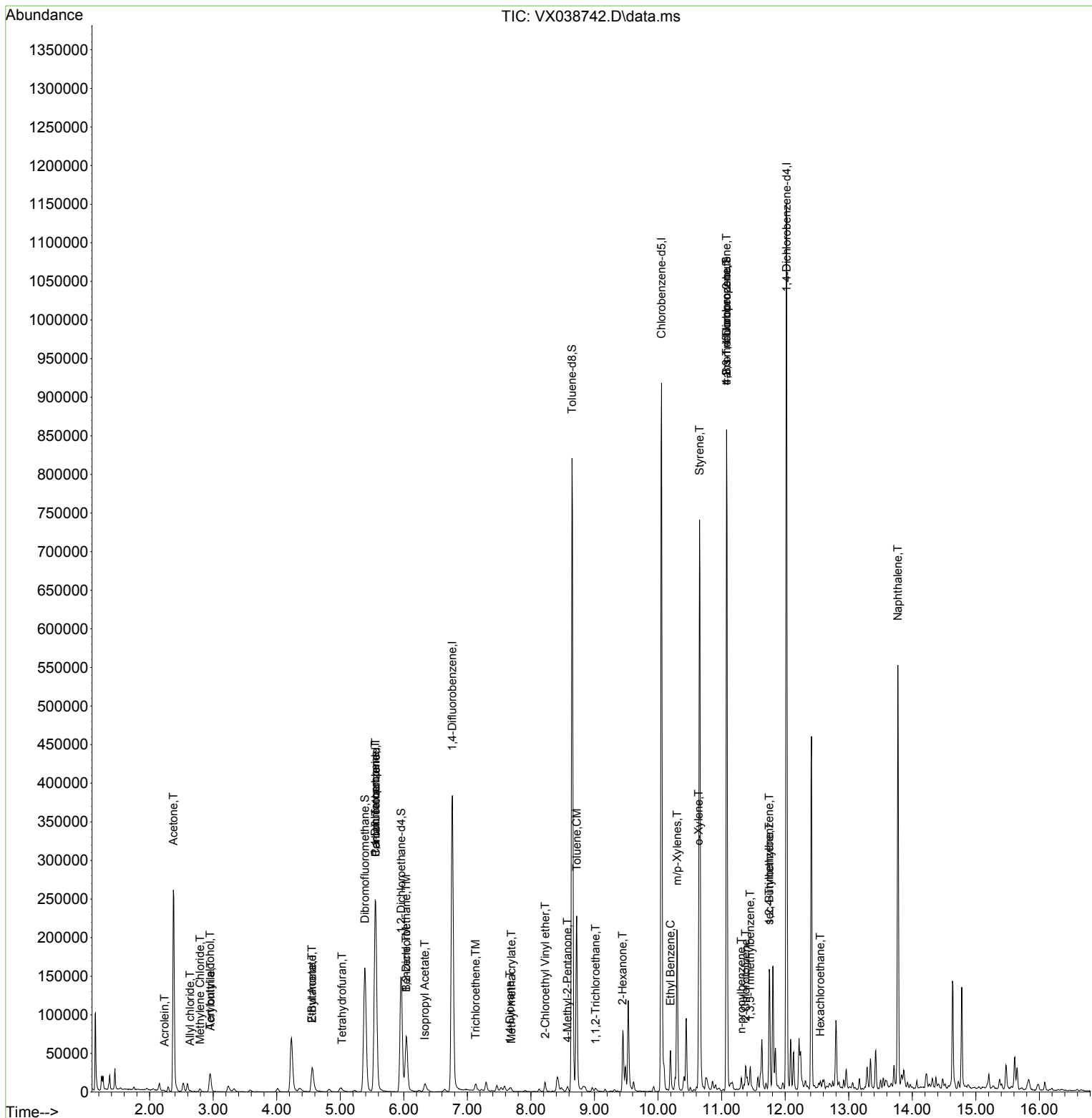
Compound	R.T.	QIon	Response	Conc	Units	Dev(Min)
----------	------	------	----------	------	-------	----------

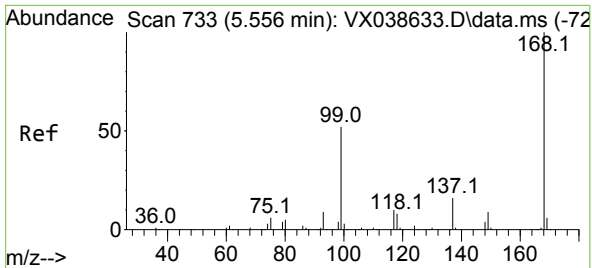
-----  
(#) = qualifier out of range (m) = manual integration (+) = signals summed

Data Path : Z:\voasrv\HPCHEM1\MSVOA\_X\Data\VX111023\  
 Data File : VX038742.D  
 Acq On : 10 Nov 2023 20:24  
 Operator : JC/MD  
 Sample : 05316-01  
 Misc : 5.0mL/MSVOA\_X/WATER  
 ALS Vial : 26 Sample Multiplier: 1

Instrument :  
 MSVOA\_X  
 ClientSampleId :

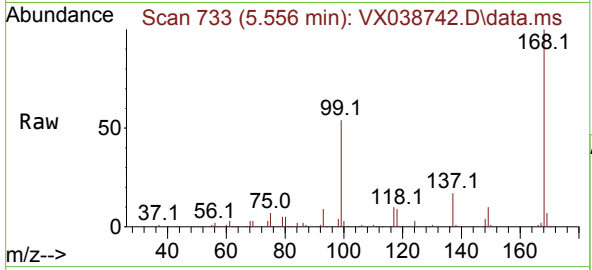
Quant Time: Nov 11 02:00:20 2023  
 Quant Method : Z:\voasrv\HPCHEM1\MSVOA\_X\Method\82X110723W.M  
 Quant Title : SW846 8260  
 QLast Update : Wed Nov 08 03:19:07 2023  
 Response via : Initial Calibration



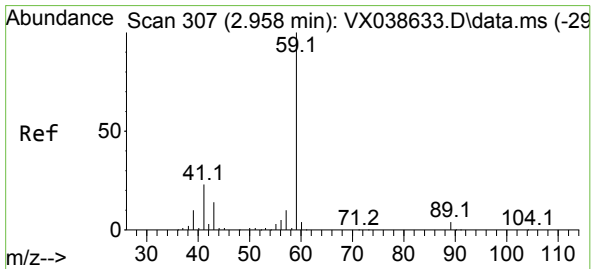
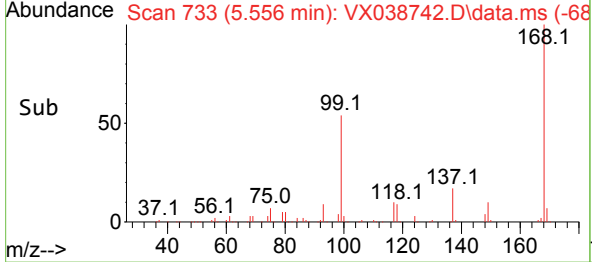
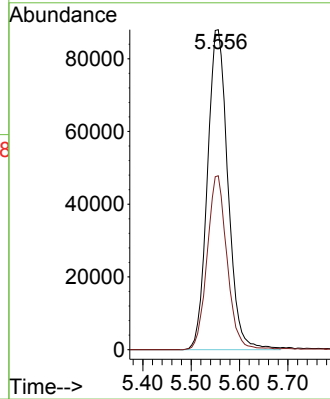


#1  
 Pentafluorobenzene  
 Concen: 50.000 ug/l  
 RT: 5.556 min Scan# 71  
 Delta R.T. -0.000 min  
 Lab File: VX038742.D  
 Acq: 10 Nov 2023 20:24

Instrument :  
 MSVOA\_X  
 ClientSampleId :

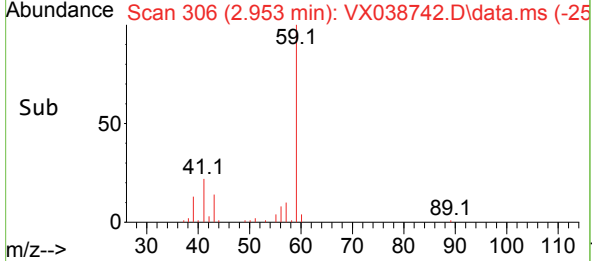
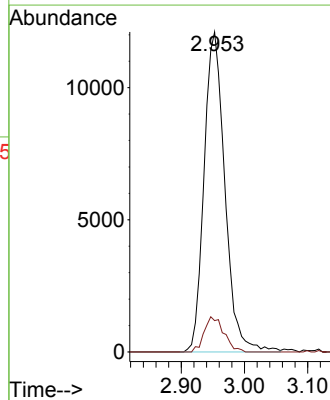
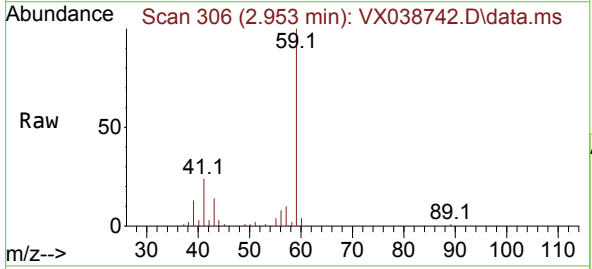


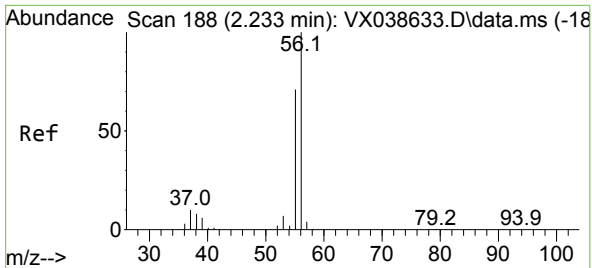
Tgt Ion:168 Resp: 258586  
 Ion Ratio Lower Upper  
 168 100  
 99 54.4 56.6 85.0#



#11  
 Tert butyl alcohol  
 Concen: 42.162 ug/l  
 RT: 2.953 min Scan# 306  
 Delta R.T. -0.006 min  
 Lab File: VX038742.D  
 Acq: 10 Nov 2023 20:24

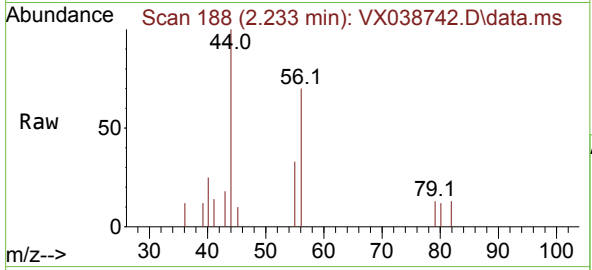
Tgt Ion: 59 Resp: 27747  
 Ion Ratio Lower Upper  
 59 100  
 57 10.4 6.0 9.0#



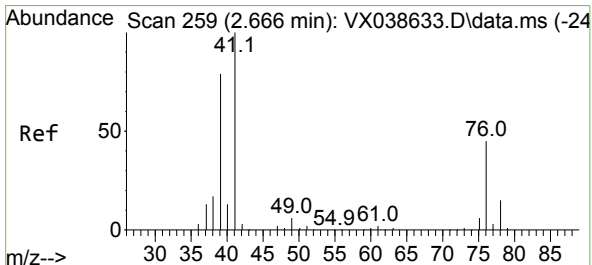
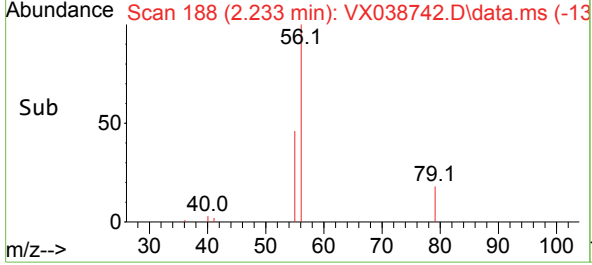
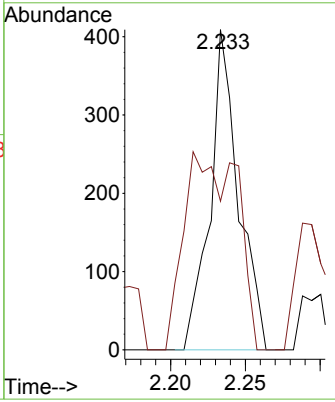


#13  
 Acrolein  
 Concen: 1.079 ug/l  
 RT: 2.233 min Scan# 11  
 Delta R.T. 0.000 min  
 Lab File: VX038742.D  
 Acq: 10 Nov 2023 20:24

Instrument : MSVOA\_X  
 ClientSampleId :

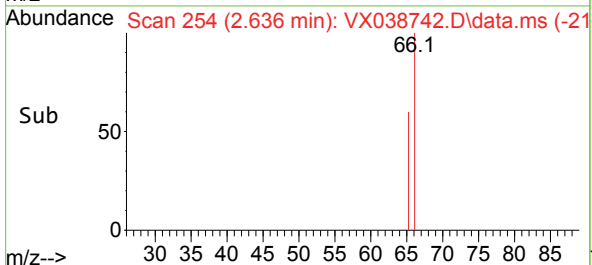
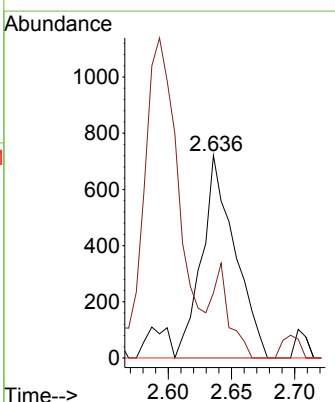
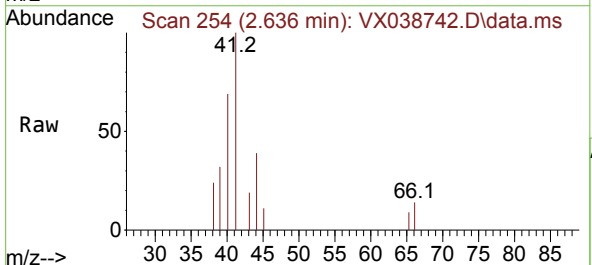


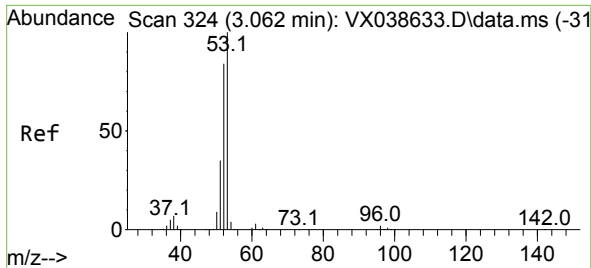
Tgt Ion: 56 Resp: 538  
 Ion Ratio Lower Upper  
 56 100  
 55 116.4 57.1 85.7#



#14  
 Allyl chloride  
 Concen: 0.379 ug/l  
 RT: 2.636 min Scan# 254  
 Delta R.T. -0.030 min  
 Lab File: VX038742.D  
 Acq: 10 Nov 2023 20:24

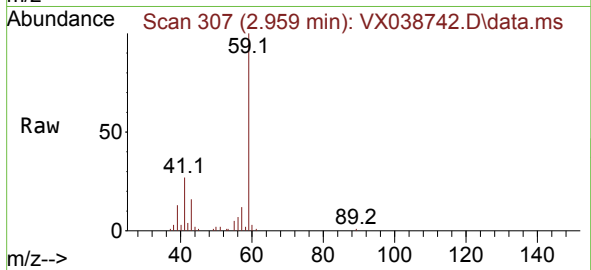
Tgt Ion: 41 Resp: 1310  
 Ion Ratio Lower Upper  
 41 100  
 39 23.3 55.8 83.6#  
 76 0.0 24.3 36.5#



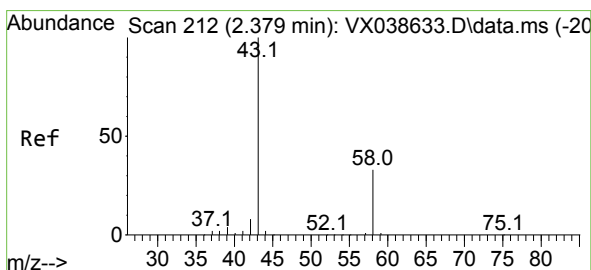
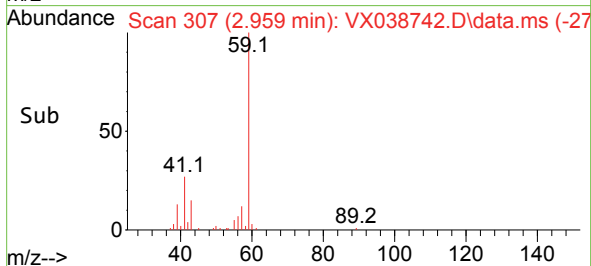
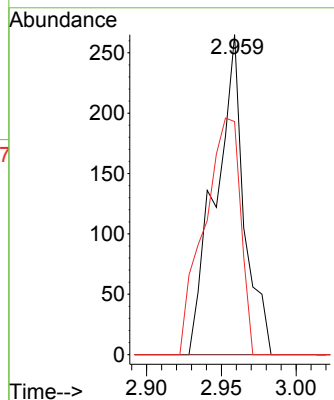


#15  
 Acrylonitrile  
 Concen: 0.255 ug/l  
 RT: 2.959 min Scan# 307  
 Delta R.T. -0.103 min  
 Lab File: VX038742.D  
 Acq: 10 Nov 2023 20:24

Instrument : MSVOA\_X  
 ClientSampleId :

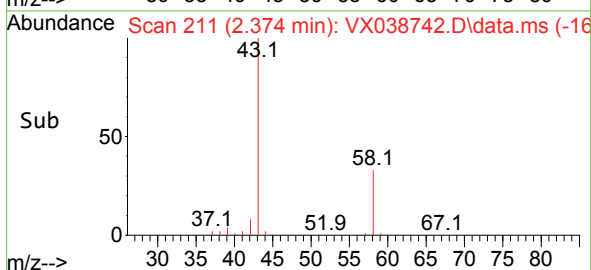
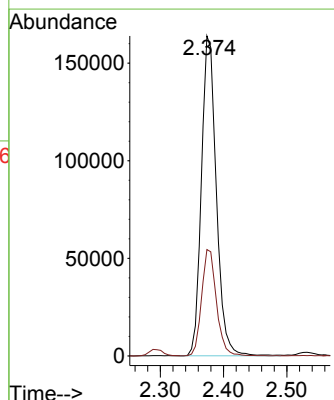
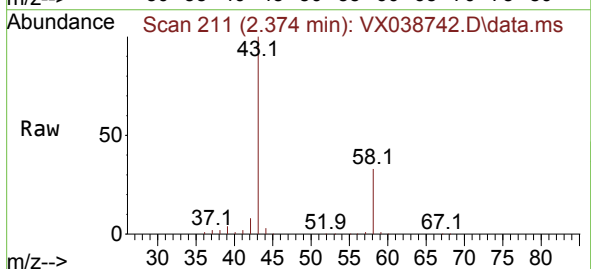


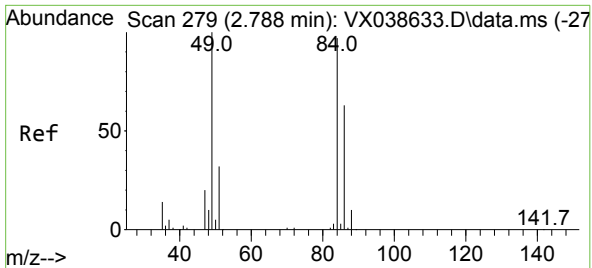
Tgt Ion	Resp	Lower	Upper
53	100		
52	0.0	66.0	99.0#
51	93.5	29.8	44.6#



#16  
 Acetone  
 Concen: 198.567 ug/l  
 RT: 2.374 min Scan# 211  
 Delta R.T. -0.006 min  
 Lab File: VX038742.D  
 Acq: 10 Nov 2023 20:24

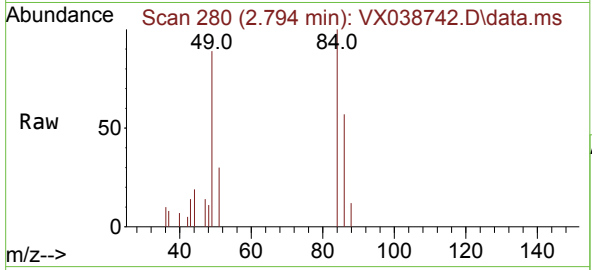
Tgt Ion	Resp	Lower	Upper
43	100		
58	33.2	21.9	32.9#



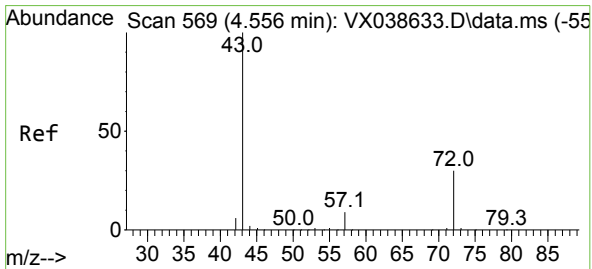
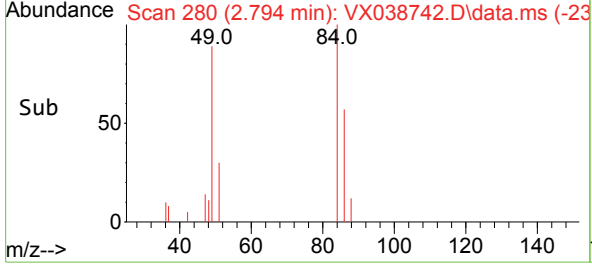
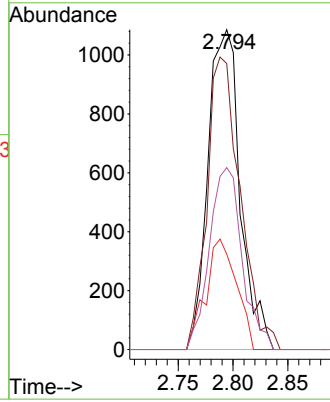


#20  
 Methylene Chloride  
 Concen: 0.812 ug/l  
 RT: 2.794 min Scan# 21  
 Delta R.T. 0.006 min  
 Lab File: VX038742.D  
 Acq: 10 Nov 2023 20:24

Instrument : MSVOA\_X  
 ClientSampleId :

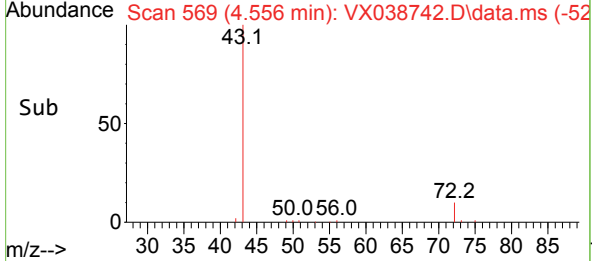
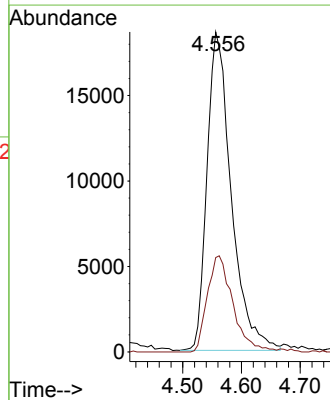
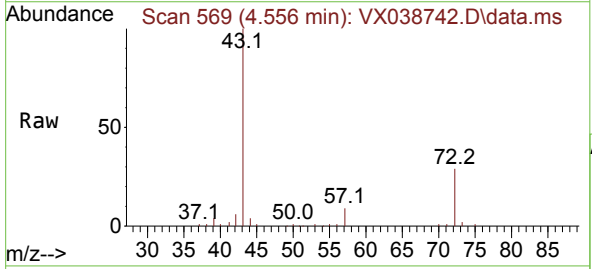


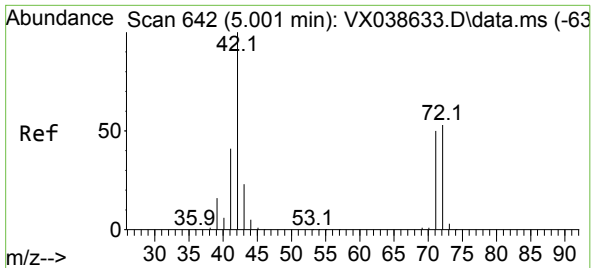
Tgt Ion: 84 Resp: 2219  
 Ion Ratio Lower Upper  
 84 100  
 49 89.4 103.6 155.4#  
 51 29.8 33.8 50.6#  
 86 56.9 49.4 74.0



#25  
 2-Butanone  
 Concen: 27.234 ug/l  
 RT: 4.556 min Scan# 569  
 Delta R.T. 0.000 min  
 Lab File: VX038742.D  
 Acq: 10 Nov 2023 20:24

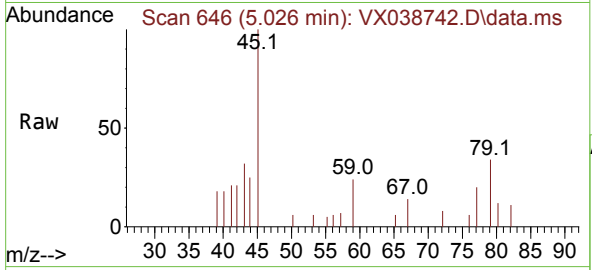
Tgt Ion: 43 Resp: 53490  
 Ion Ratio Lower Upper  
 43 100  
 72 29.6 19.4 29.2#





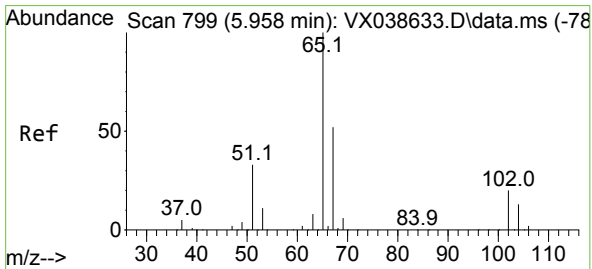
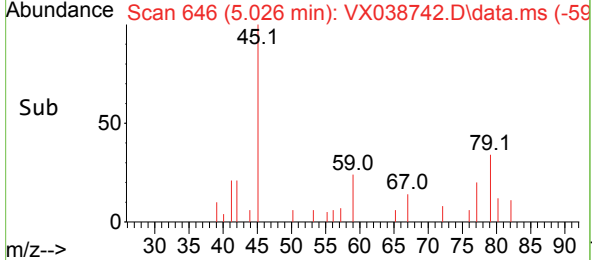
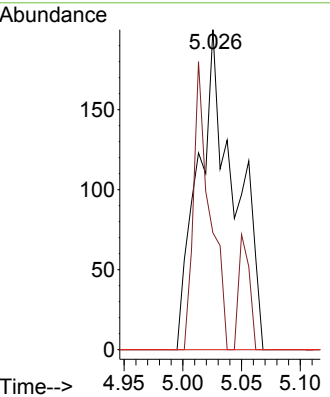
#29  
 Tetrahydrofuran  
 Concen: 0.353 ug/l  
 RT: 5.026 min Scan# 646  
 Delta R.T. 0.025 min  
 Lab File: VX038742.D  
 Acq: 10 Nov 2023 20:24

Instrument : MSVOA\_X  
 ClientSampleId :



Tgt Ion: 42 Resp: 431

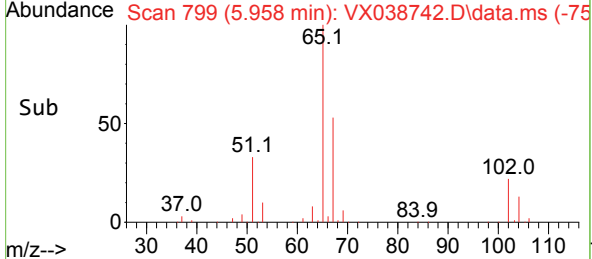
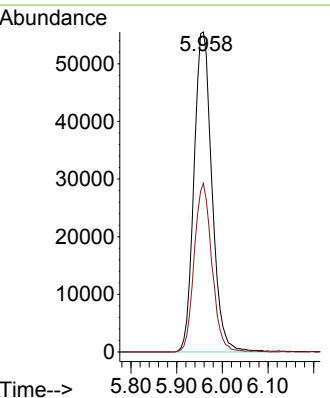
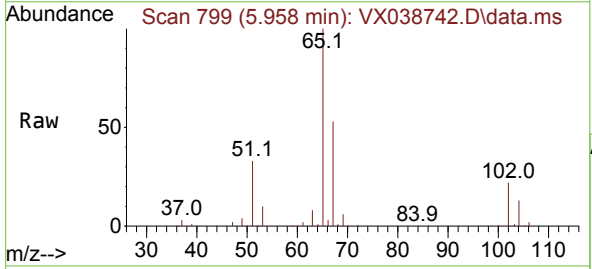
Ion	Ratio	Lower	Upper
42	100		
72	40.6	34.2	51.4
71	0.0	32.2	48.2#



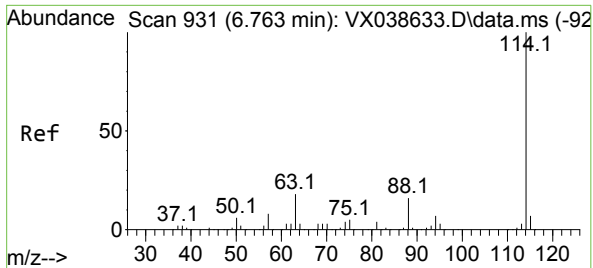
#33  
 1,2-Dichloroethane-d4  
 Concen: 47.025 ug/l  
 RT: 5.958 min Scan# 799  
 Delta R.T. 0.000 min  
 Lab File: VX038742.D  
 Acq: 10 Nov 2023 20:24

Tgt Ion: 65 Resp: 151387

Ion	Ratio	Lower	Upper
65	100		
67	51.9	0.0	100.2





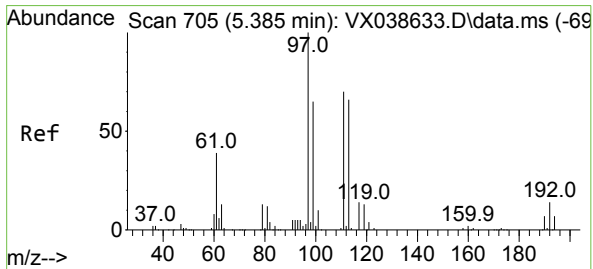
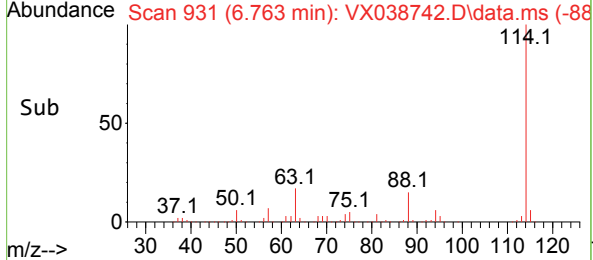
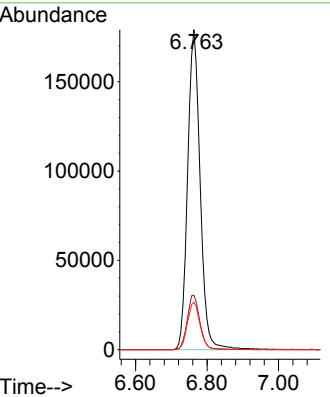
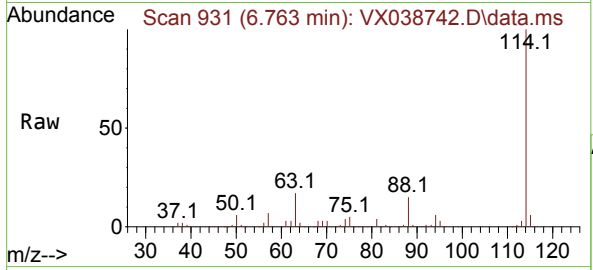


#34  
 1,4-Difluorobenzene  
 Concen: 50.000 ug/l  
 RT: 6.763 min Scan# 911  
 Delta R.T. 0.000 min  
 Lab File: VX038742.D  
 Acq: 10 Nov 2023 20:24

Instrument : MSVOA\_X  
 ClientSampleId :

Tgt Ion:114 Resp: 435489

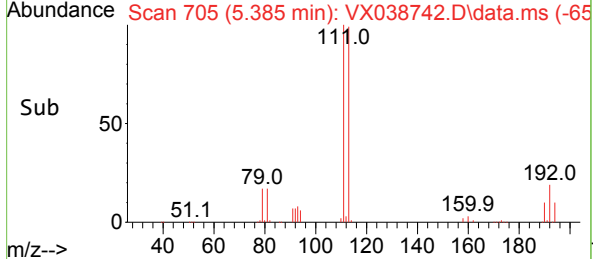
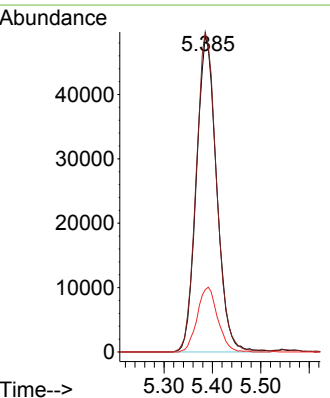
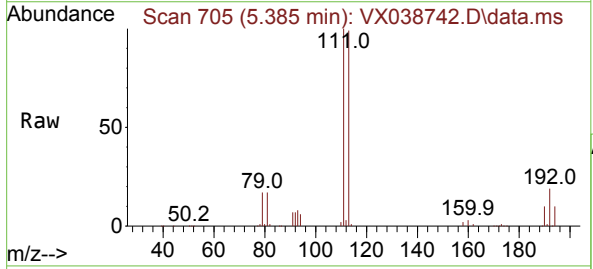
Ion	Ratio	Lower	Upper
114	100		
63	17.0	0.0	45.0
88	14.9	0.0	36.6

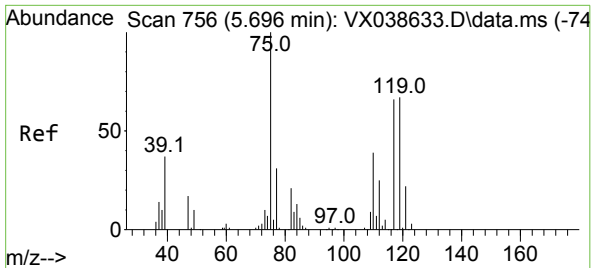


#35  
 Dibromofluoromethane  
 Concen: 45.467 ug/l  
 RT: 5.385 min Scan# 705  
 Delta R.T. 0.000 min  
 Lab File: VX038742.D  
 Acq: 10 Nov 2023 20:24

Tgt Ion:113 Resp: 142609

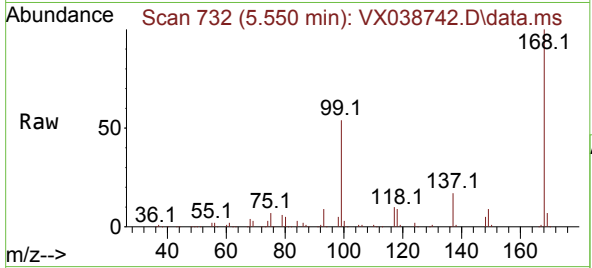
Ion	Ratio	Lower	Upper
113	100		
111	101.8	82.9	124.3
192	20.8	13.3	19.9



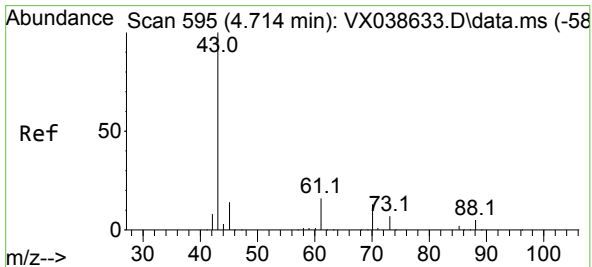
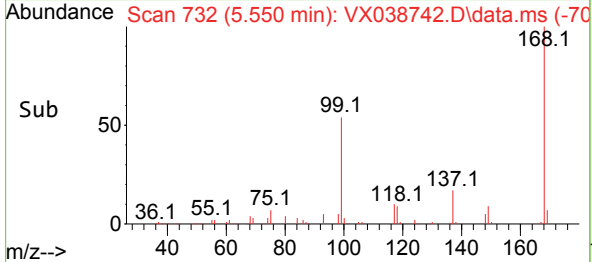
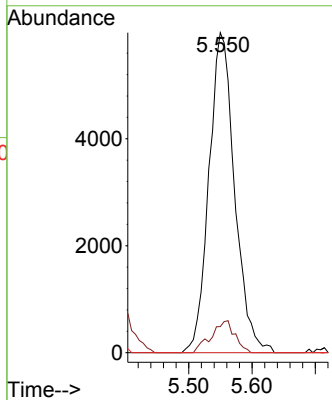


#36  
 1,1-Dichloropropene  
 Concen: 4.329 ug/l  
 RT: 5.550 min Scan# 71  
 Delta R.T. -0.146 min  
 Lab File: VX038742.D  
 Acq: 10 Nov 2023 20:24

Instrument :  
 MSVOA\_X  
 ClientSampleId :

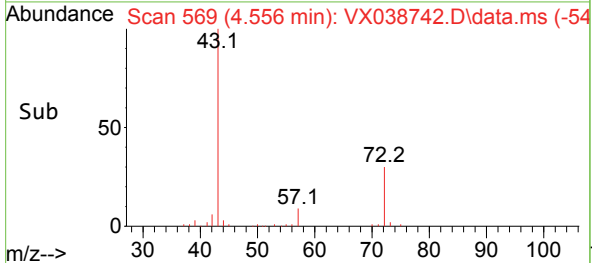
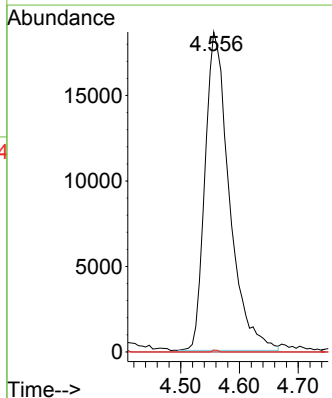
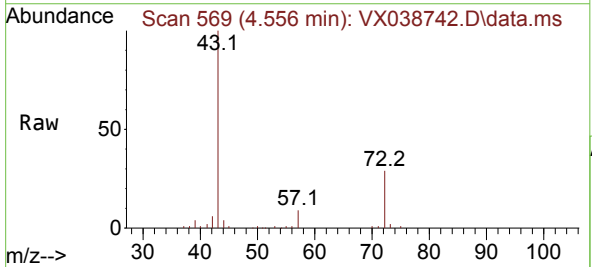


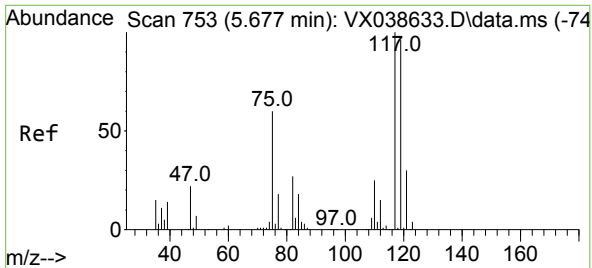
Tgt Ion: 75 Resp: 16868  
 Ion Ratio Lower Upper  
 75 100  
 110 9.2 17.0 50.9#  
 77 0.0 24.7 37.1#



#37  
 Ethyl Acetate  
 Concen: 13.447 ug/l  
 RT: 4.556 min Scan# 569  
 Delta R.T. -0.158 min  
 Lab File: VX038742.D  
 Acq: 10 Nov 2023 20:24

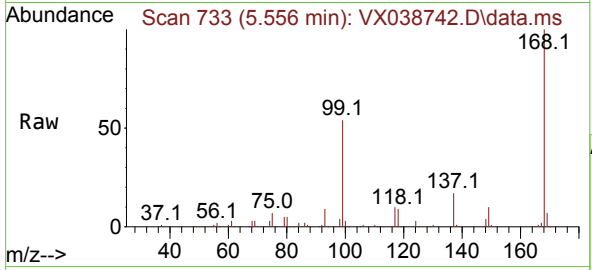
Tgt Ion: 43 Resp: 53490  
 Ion Ratio Lower Upper  
 43 100  
 61 0.0 10.6 16.0#  
 70 0.1 8.3 12.5#



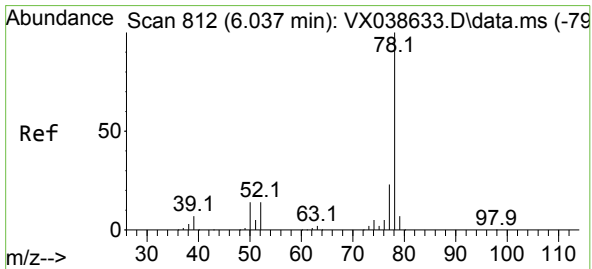
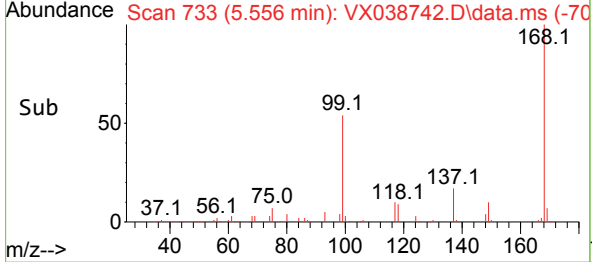
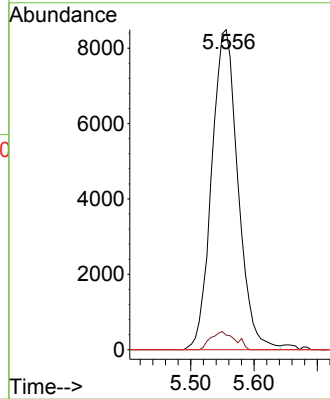


#38  
 Carbon Tetrachloride  
 Concen: 5.622 ug/l  
 RT: 5.556 min Scan# 711  
 Delta R.T. -0.122 min  
 Lab File: VX038742.D  
 Acq: 10 Nov 2023 20:24

Instrument : MSVOA\_X  
 ClientSampleId :

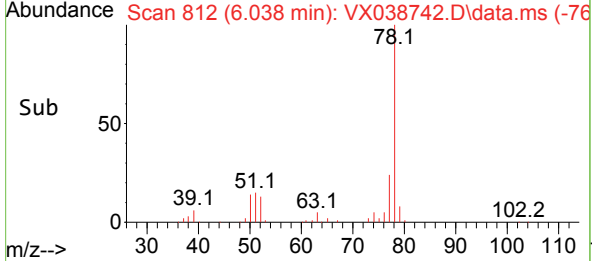
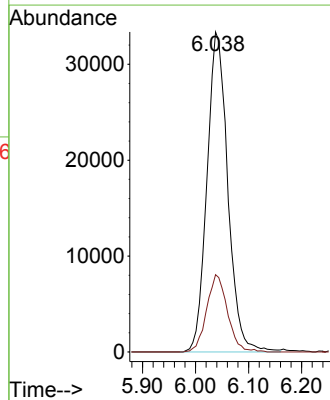
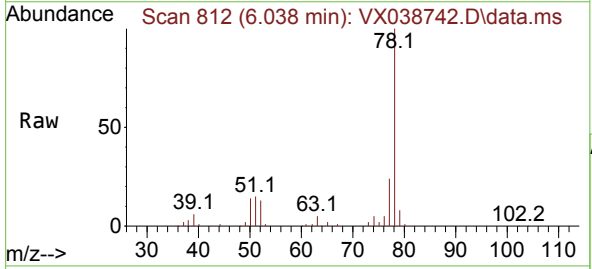


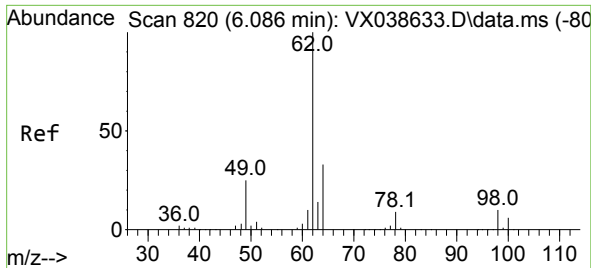
Tgt Ion:117 Resp: 24486  
 Ion Ratio Lower Upper  
 117 100  
 119 4.6 78.2 117.2#  
 121 0.0 24.4 36.6#



#40  
 Benzene  
 Concen: 8.124 ug/l  
 RT: 6.038 min Scan# 812  
 Delta R.T. 0.000 min  
 Lab File: VX038742.D  
 Acq: 10 Nov 2023 20:24

Tgt Ion: 78 Resp: 91168  
 Ion Ratio Lower Upper  
 78 100  
 77 24.1 19.3 28.9

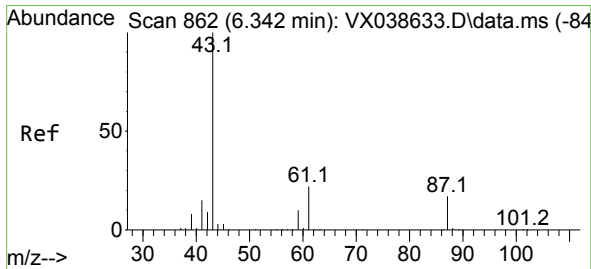
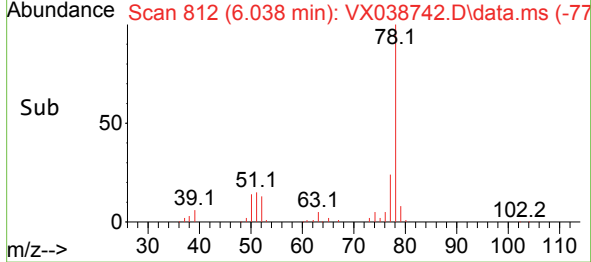
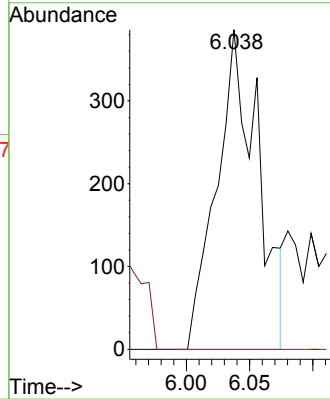
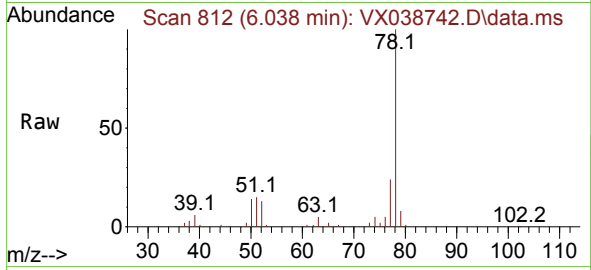




#42  
 1,2-Dichloroethane  
 Concen: 0.216 ug/l  
 RT: 6.038 min Scan# 81  
 Delta R.T. -0.048 min  
 Lab File: VX038742.D  
 Acq: 10 Nov 2023 20:24

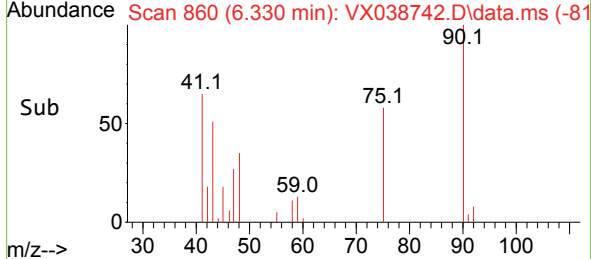
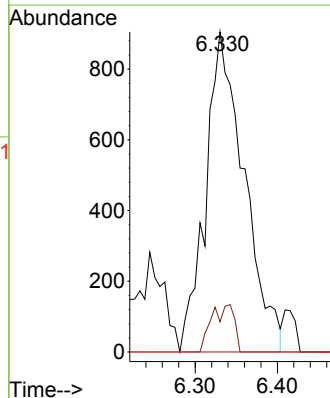
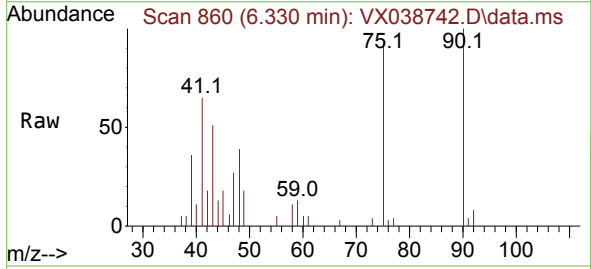
Instrument : MSVOA\_X  
 ClientSampleId :

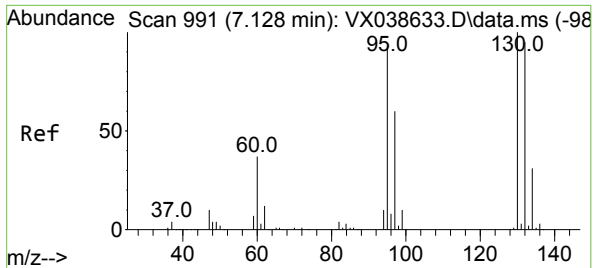
Tgt Ion: 62 Resp: 874  
 Ion Ratio Lower Upper  
 62 100  
 98 0.0 0.0 16.0



#43  
 Isopropyl Acetate  
 Concen: 0.481 ug/l  
 RT: 6.330 min Scan# 860  
 Delta R.T. -0.012 min  
 Lab File: VX038742.D  
 Acq: 10 Nov 2023 20:24

Tgt Ion: 43 Resp: 2941  
 Ion Ratio Lower Upper  
 43 100  
 61 8.7 15.2 22.8#  
 87 0.0 9.8 14.6#

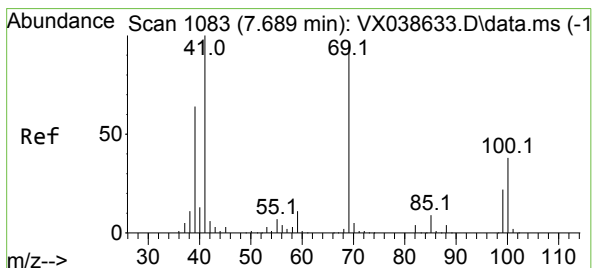
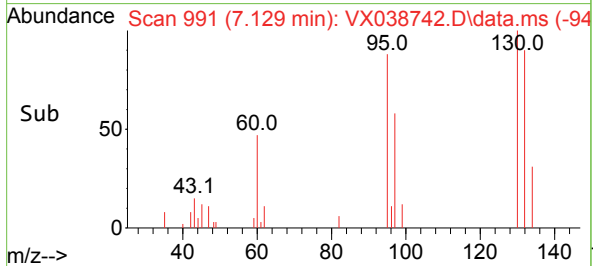
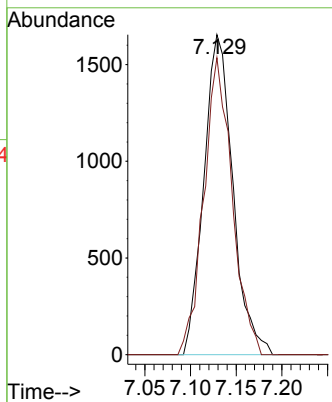
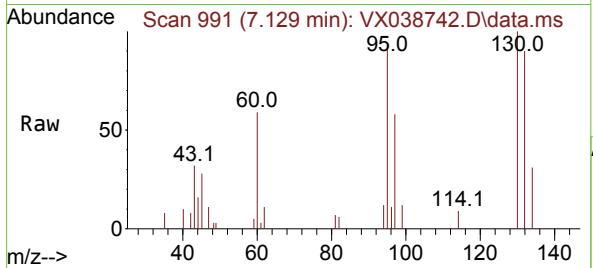




#44  
 Trichloroethene  
 Concen: 1.048 ug/l  
 RT: 7.129 min Scan# 991  
 Delta R.T. 0.000 min  
 Lab File: VX038742.D  
 Acq: 10 Nov 2023 20:24

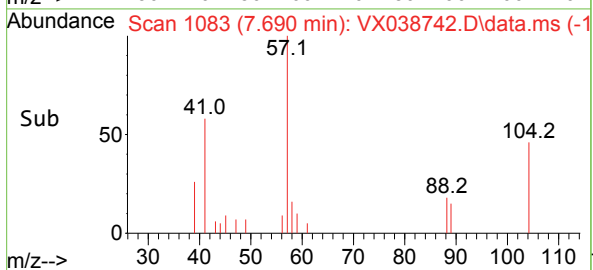
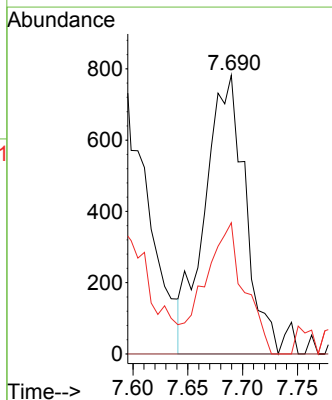
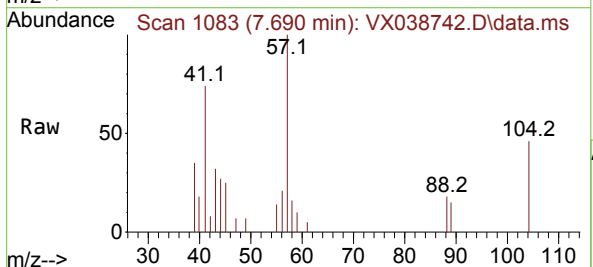
Instrument : MSVOA\_X  
 ClientSampleId :

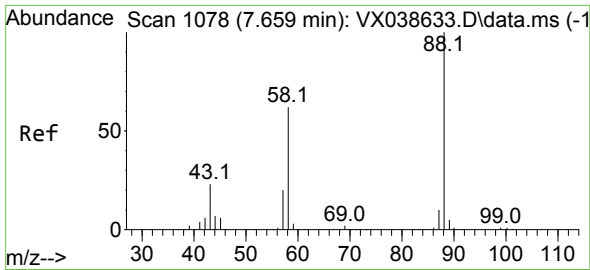
Tgt Ion:130 Resp: 3660  
 Ion Ratio Lower Upper  
 130 100  
 95 92.8 0.0 204.4



#48  
 Methyl methacrylate  
 Concen: 0.678 ug/l  
 RT: 7.690 min Scan# 1083  
 Delta R.T. 0.000 min  
 Lab File: VX038742.D  
 Acq: 10 Nov 2023 20:24

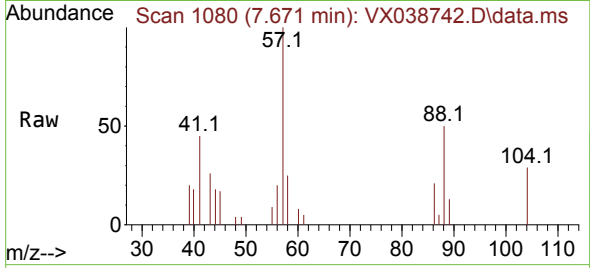
Tgt Ion: 41 Resp: 1998  
 Ion Ratio Lower Upper  
 41 100  
 69 0.0 59.2 88.8#  
 39 46.5 47.7 71.5#



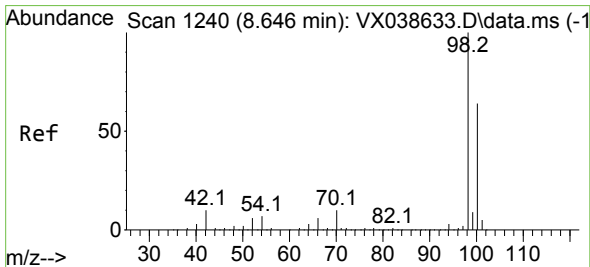
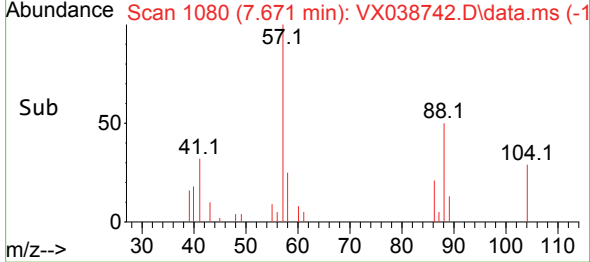
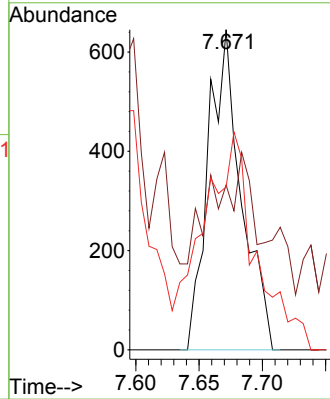


#49  
 1,4-Dioxane  
 Concen: 17.423 ug/l  
 RT: 7.671 min Scan# 1078  
 Delta R.T. 0.013 min  
 Lab File: VX038742.D  
 Acq: 10 Nov 2023 20:24

Instrument : MSVOA\_X  
 ClientSampleId :

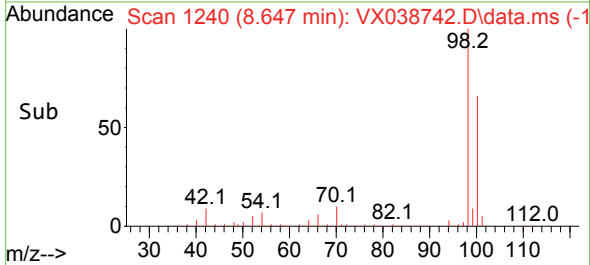
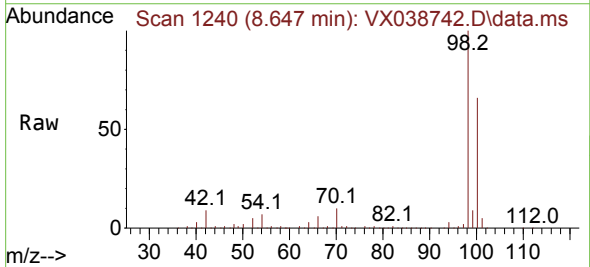
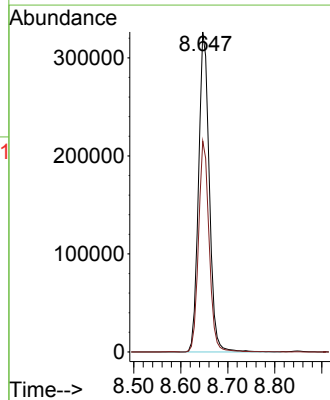


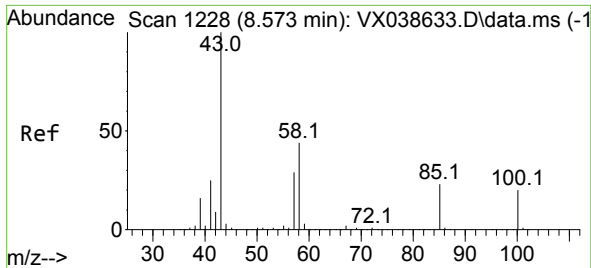
Tgt Ion: 88 Resp: 1169  
 Ion Ratio Lower Upper  
 88 100  
 43 37.6 0.0 0.0#  
 58 107.8 60.1 90.1#



#50  
 Toluene-d8  
 Concen: 46.407 ug/l  
 RT: 8.647 min Scan# 1240  
 Delta R.T. 0.000 min  
 Lab File: VX038742.D  
 Acq: 10 Nov 2023 20:24

Tgt Ion: 98 Resp: 520854  
 Ion Ratio Lower Upper  
 98 100  
 100 65.0 53.1 79.7

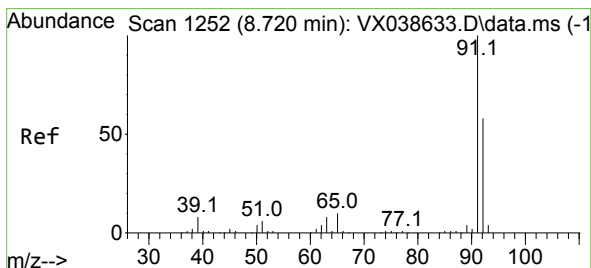
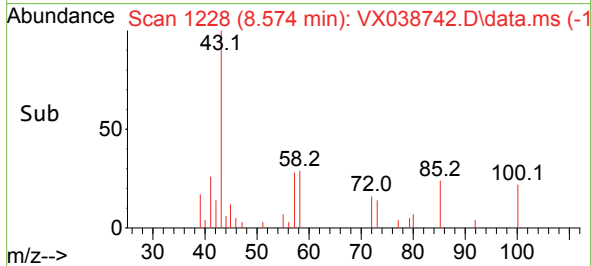
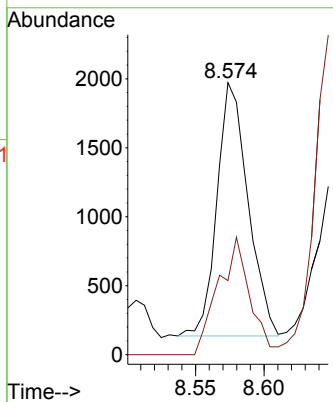
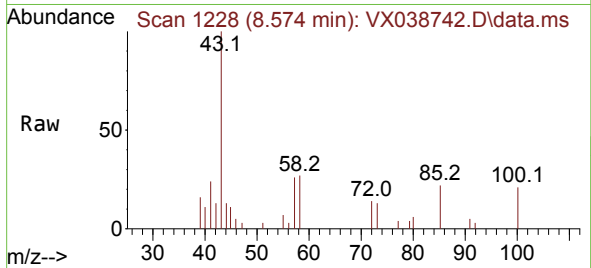




#51  
 4-Methyl-2-Pentanone  
 Concen: 0.727 ug/l  
 RT: 8.574 min Scan# 11  
 Delta R.T. 0.000 min  
 Lab File: VX038742.D  
 Acq: 10 Nov 2023 20:24

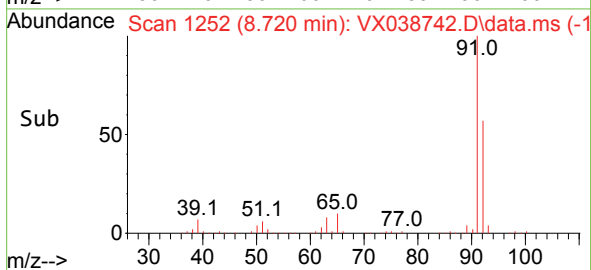
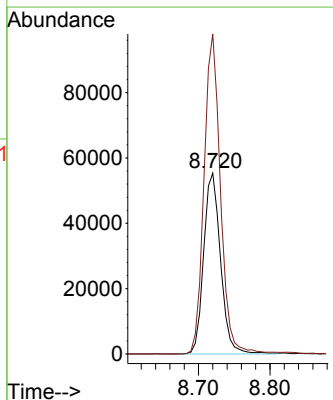
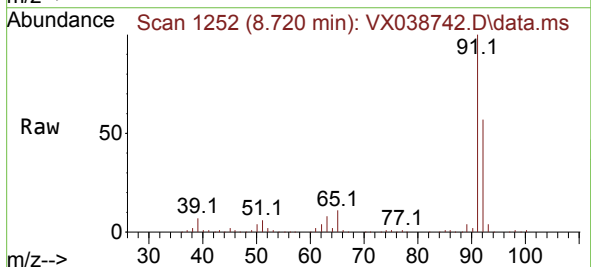
Instrument :  
 MSVOA\_X  
 ClientSampleId :

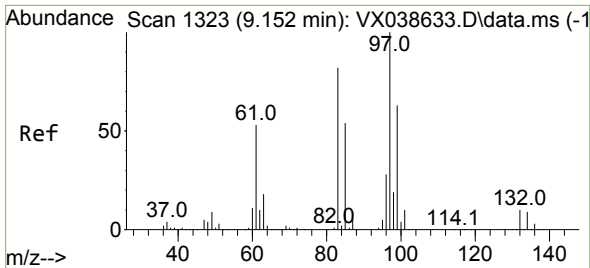
Tgt Ion: 43 Resp: 2895  
 Ion Ratio Lower Upper  
 43 100  
 58 47.3 30.4 45.6#



#52  
 Toluene  
 Concen: 12.345 ug/l  
 RT: 8.720 min Scan# 1252  
 Delta R.T. 0.000 min  
 Lab File: VX038742.D  
 Acq: 10 Nov 2023 20:24

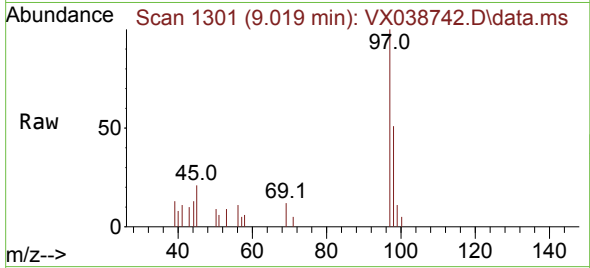
Tgt Ion: 92 Resp: 90751  
 Ion Ratio Lower Upper  
 92 100  
 91 172.7 134.2 201.2





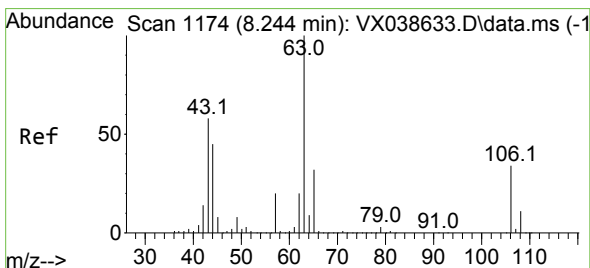
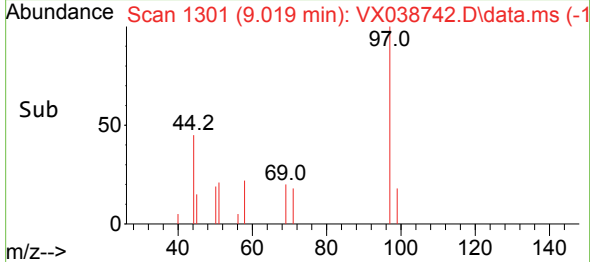
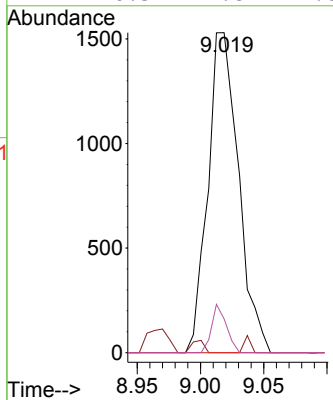
#55  
 1,1,2-Trichloroethane  
 Concen: 0.826 ug/l  
 RT: 9.019 min Scan# 111  
 Delta R.T. -0.134 min  
 Lab File: VX038742.D  
 Acq: 10 Nov 2023 20:24

Instrument : MSVOA\_X  
 ClientSampleId :



Tgt Ion: 97 Resp: 2578

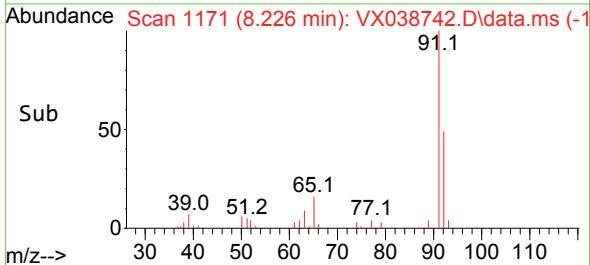
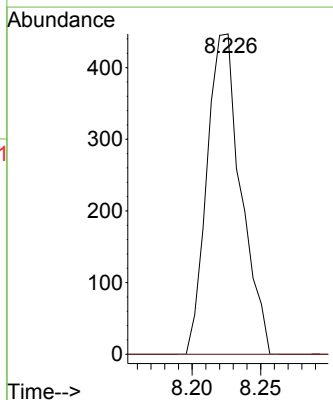
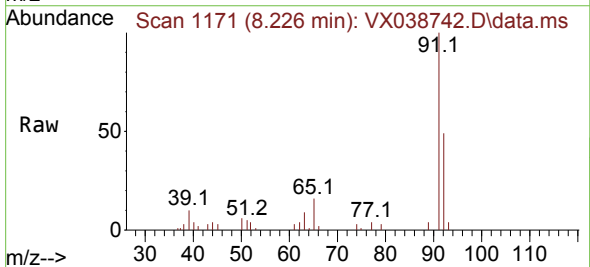
Ion	Ratio	Lower	Upper
97	100		
83	0.0	65.8	98.8#
85	0.0	41.6	62.4#
99	10.5	47.8	71.8#



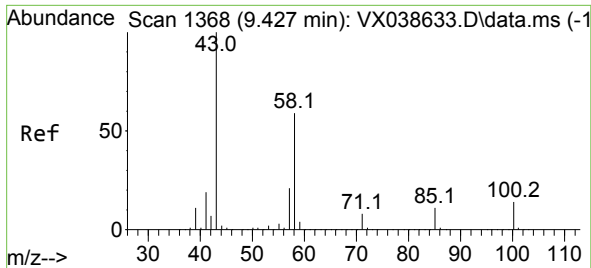
#58  
 2-Chloroethyl Vinyl ether  
 Concen: 0.360 ug/l  
 RT: 8.226 min Scan# 1171  
 Delta R.T. -0.018 min  
 Lab File: VX038742.D  
 Acq: 10 Nov 2023 20:24

Tgt Ion: 63 Resp: 772

Ion	Ratio	Lower	Upper
63	100		
106	0.0	22.5	33.7#

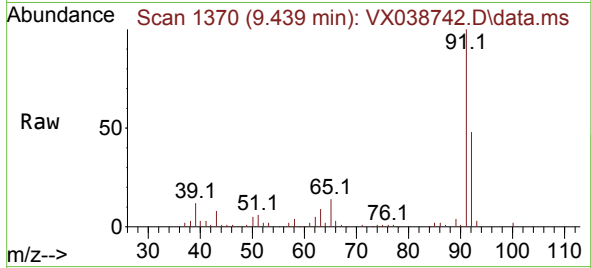




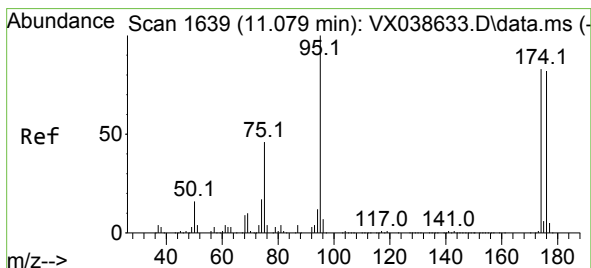
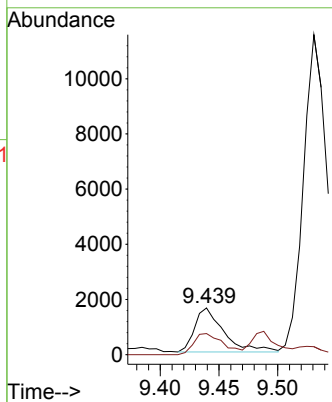
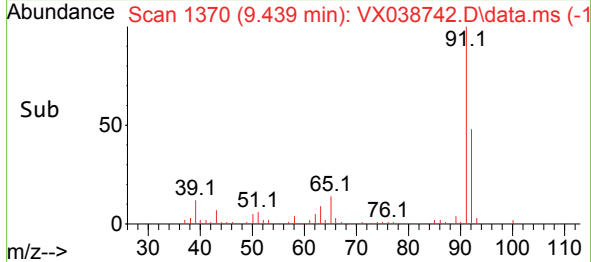


#59  
 2-Hexanone  
 Concen: 0.855 ug/l  
 RT: 9.439 min Scan# 11  
 Delta R.T. 0.013 min  
 Lab File: VX038742.D  
 Acq: 10 Nov 2023 20:24

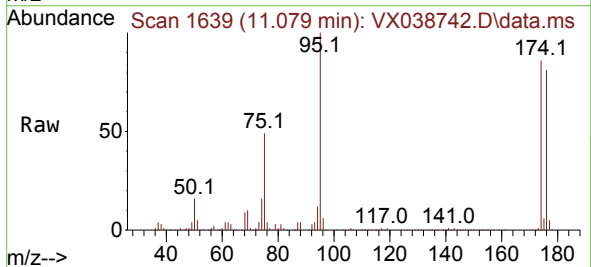
Instrument :  
 MSVOA\_X  
 ClientSampleId :



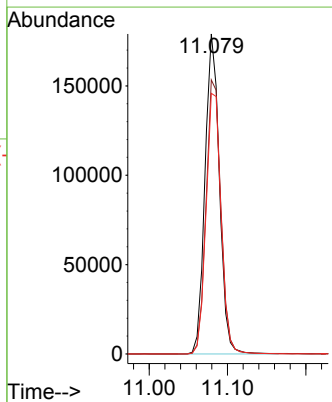
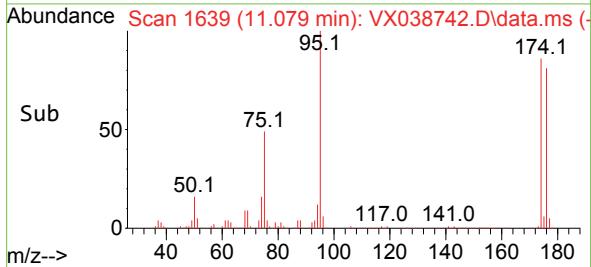
Tgt Ion: 43 Resp: 2755  
 Ion Ratio Lower Upper  
 43 100  
 58 49.1 26.2 78.5

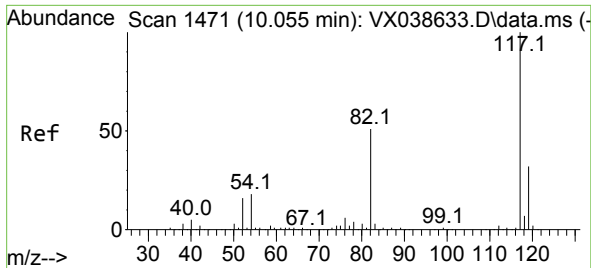


#62  
 4-Bromofluorobenzene  
 Concen: 52.405 ug/l  
 RT: 11.079 min Scan# 1639  
 Delta R.T. 0.000 min  
 Lab File: VX038742.D  
 Acq: 10 Nov 2023 20:24



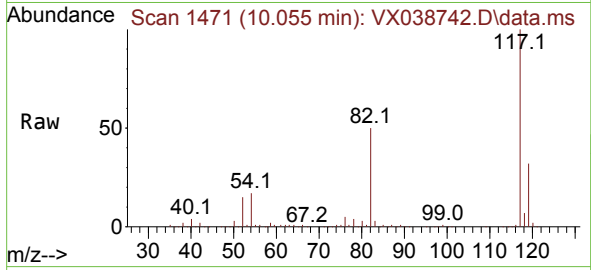
Tgt Ion: 95 Resp: 228046  
 Ion Ratio Lower Upper  
 95 100  
 174 88.6 0.0 135.6  
 176 85.2 0.0 131.0





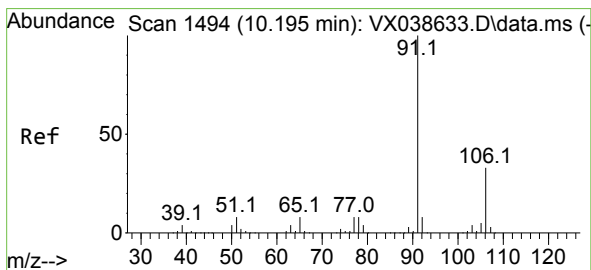
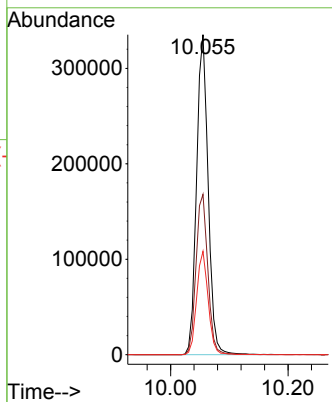
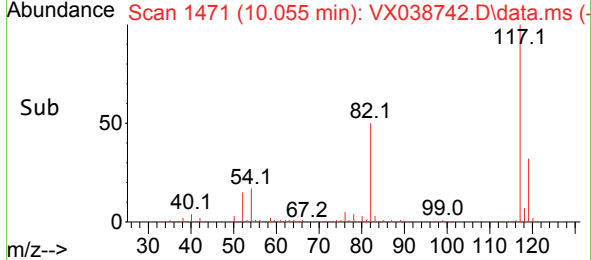
#63  
 Chlorobenzene-d5  
 Concen: 50.000 ug/l  
 RT: 10.055 min Scan# 14  
 Delta R.T. 0.000 min  
 Lab File: VX038742.D  
 Acq: 10 Nov 2023 20:24

Instrument :  
 MSVOA\_X  
 ClientSampleId :



Tgt Ion:117 Resp: 459549

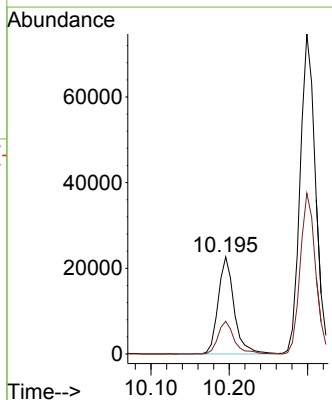
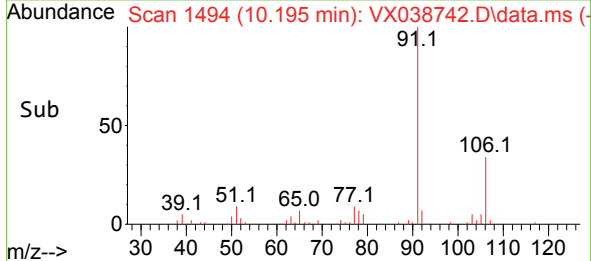
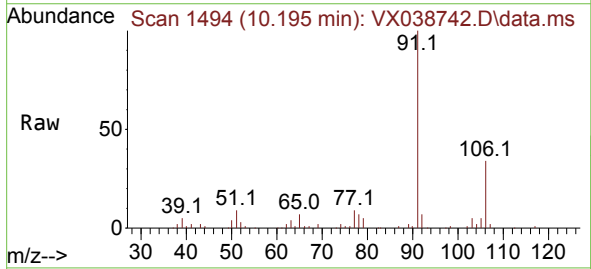
Ion	Ratio	Lower	Upper
117	100		
82	50.1	46.2	69.4
119	32.3	25.5	38.3

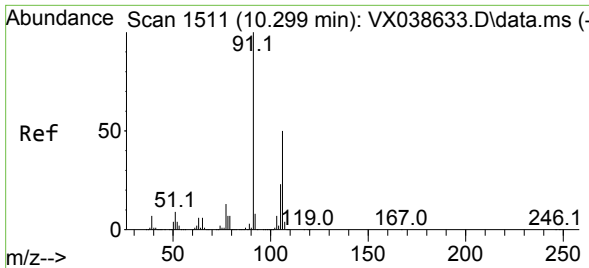


#67  
 Ethyl Benzene  
 Concen: 2.035 ug/l  
 RT: 10.195 min Scan# 1494  
 Delta R.T. 0.000 min  
 Lab File: VX038742.D  
 Acq: 10 Nov 2023 20:24

Tgt Ion: 91 Resp: 32200

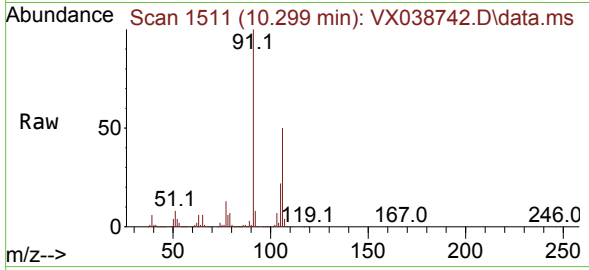
Ion	Ratio	Lower	Upper
91	100		
106	33.6	24.9	37.3



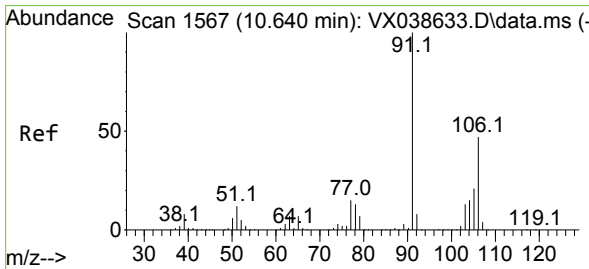
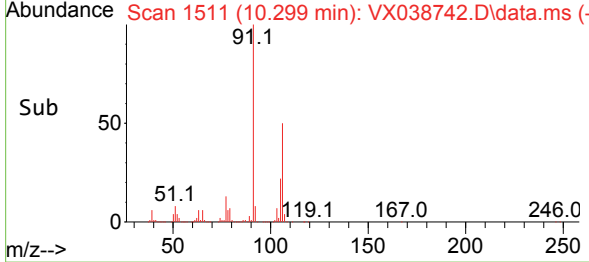
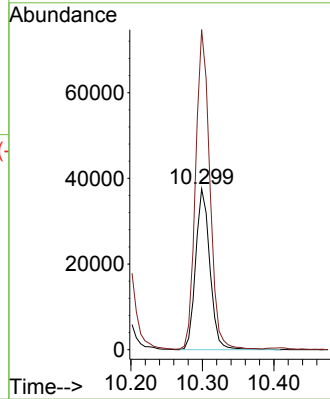


#68  
 m/p-Xylenes  
 Concen: 8.259 ug/l  
 RT: 10.299 min Scan# 1511  
 Delta R.T. 0.000 min  
 Lab File: VX038742.D  
 Acq: 10 Nov 2023 20:24

Instrument :  
 MSVOA\_X  
 ClientSampleId :

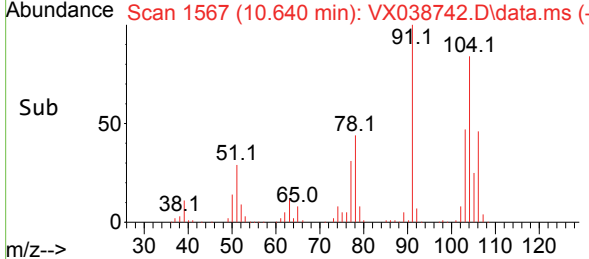
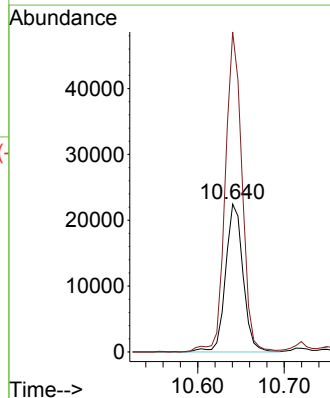
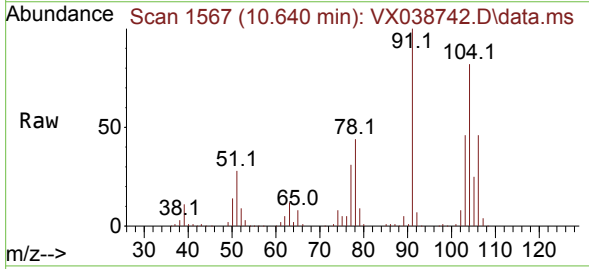


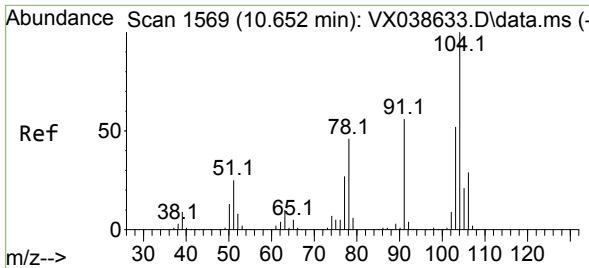
Tgt Ion:106 Resp: 51872  
 Ion Ratio Lower Upper  
 106 100  
 91 197.9 165.5 248.3



#69  
 o-Xylene  
 Concen: 5.154 ug/l  
 RT: 10.640 min Scan# 1567  
 Delta R.T. 0.000 min  
 Lab File: VX038742.D  
 Acq: 10 Nov 2023 20:24

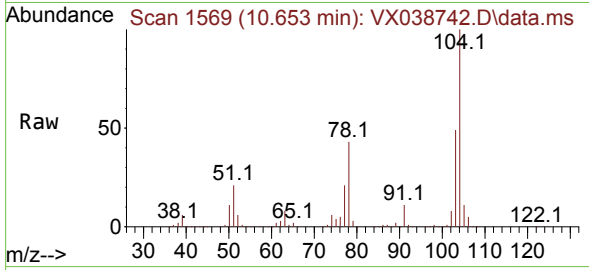
Tgt Ion:106 Resp: 31475  
 Ion Ratio Lower Upper  
 106 100  
 91 207.6 108.9 326.8



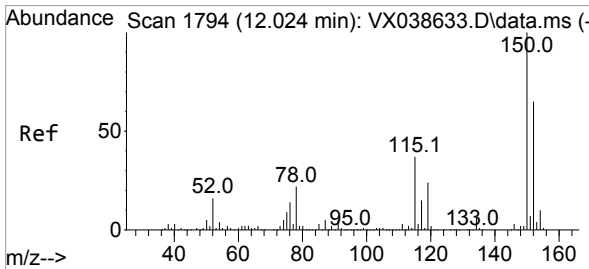
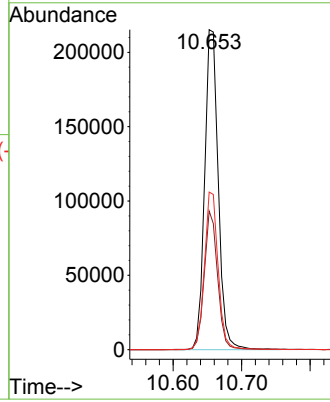
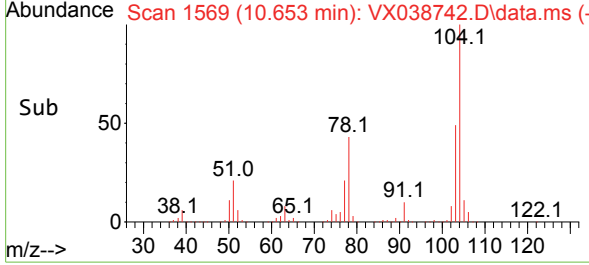


#70  
 Styrene  
 Concen: 29.607 ug/l  
 RT: 10.653 min Scan# 11  
 Delta R.T. 0.000 min  
 Lab File: VX038742.D  
 Acq: 10 Nov 2023 20:24

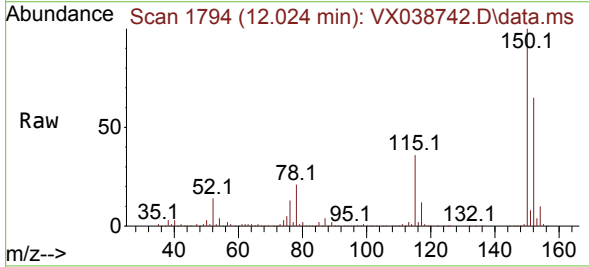
Instrument :  
 MSVOA\_X  
 ClientSampleId :



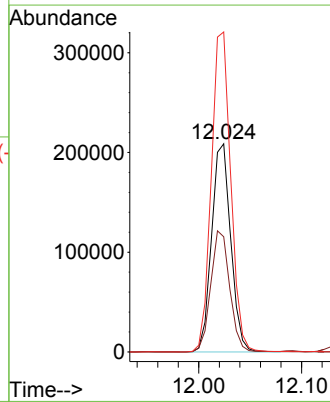
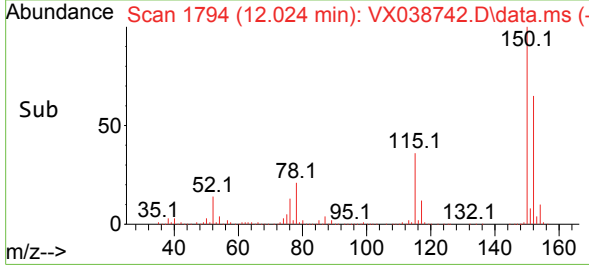
Tgt Ion:104 Resp: 298430  
 Ion Ratio Lower Upper  
 104 100  
 78 42.8 43.6 65.4#  
 103 49.8 43.6 65.4

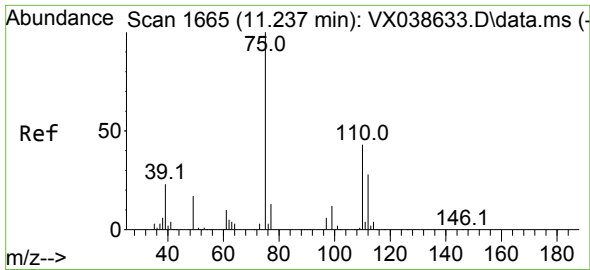


#72  
 1,4-Dichlorobenzene-d4  
 Concen: 50.000 ug/l  
 RT: 12.024 min Scan# 1794  
 Delta R.T. 0.000 min  
 Lab File: VX038742.D  
 Acq: 10 Nov 2023 20:24



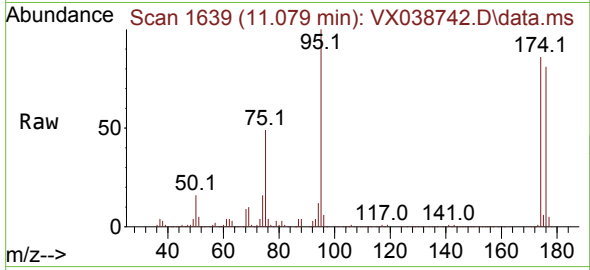
Tgt Ion:152 Resp: 270801  
 Ion Ratio Lower Upper  
 152 100  
 115 57.7 43.3 129.9  
 150 155.9 0.0 345.0



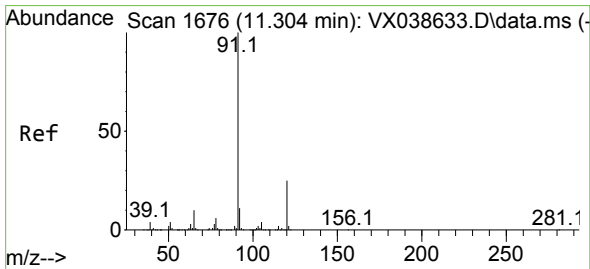
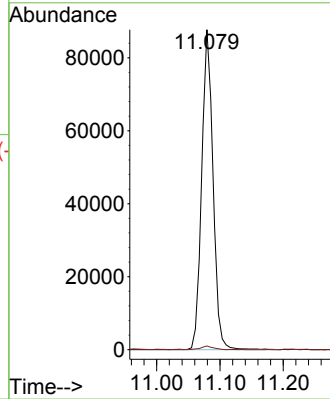
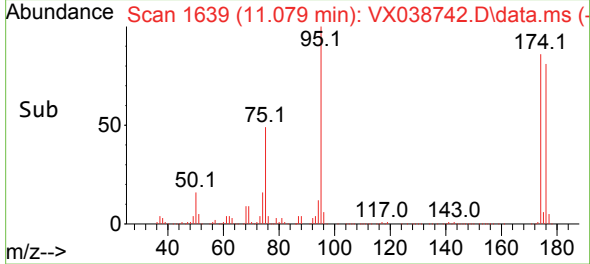


#76  
 1,2,3-Trichloropropane  
 Concen: 20.412 ug/l  
 RT: 11.079 min Scan# 1639  
 Delta R.T. -0.158 min  
 Lab File: VX038742.D  
 Acq: 10 Nov 2023 20:24

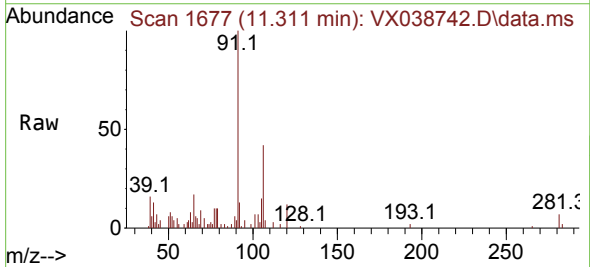
Instrument : MSVOA\_X  
 ClientSampleId :



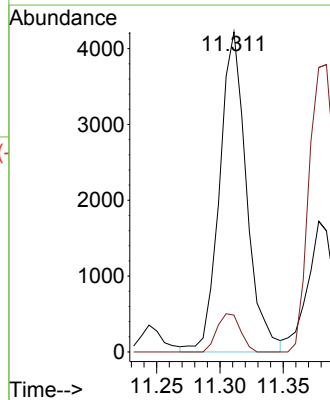
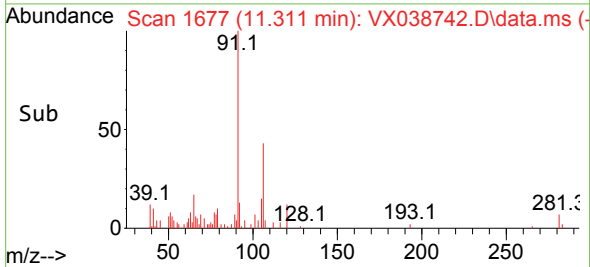
Tgt Ion: 75 Resp: 109475  
 Ion Ratio Lower Upper  
 75 100  
 77 1.3 19.1 57.5#

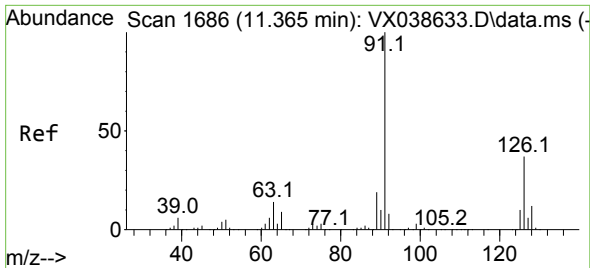


#78  
 n-propylbenzene  
 Concen: 0.324 ug/l  
 RT: 11.311 min Scan# 1677  
 Delta R.T. 0.006 min  
 Lab File: VX038742.D  
 Acq: 10 Nov 2023 20:24



Tgt Ion: 91 Resp: 6259  
 Ion Ratio Lower Upper  
 91 100  
 120 10.3 11.5 34.4#

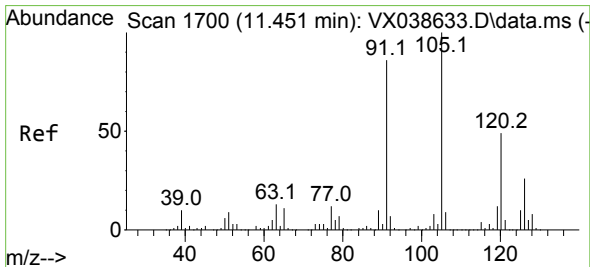
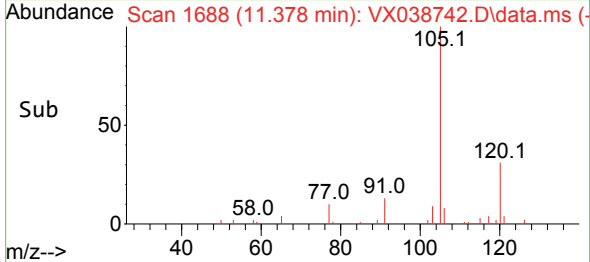
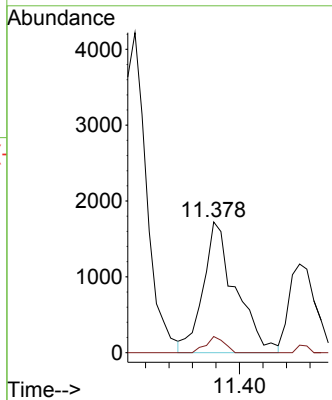
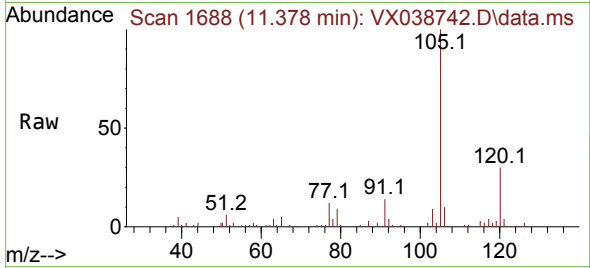




#79  
 2-Chlorotoluene  
 Concen: 0.286 ug/l  
 RT: 11.378 min Scan# 11  
 Delta R.T. 0.013 min  
 Lab File: VX038742.D  
 Acq: 10 Nov 2023 20:24

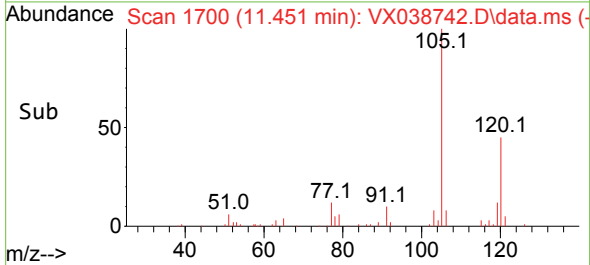
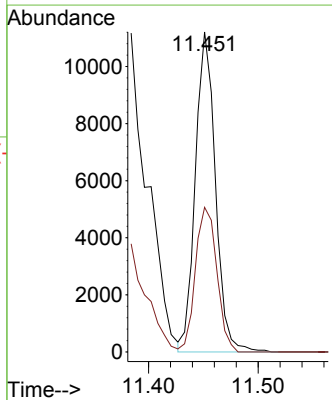
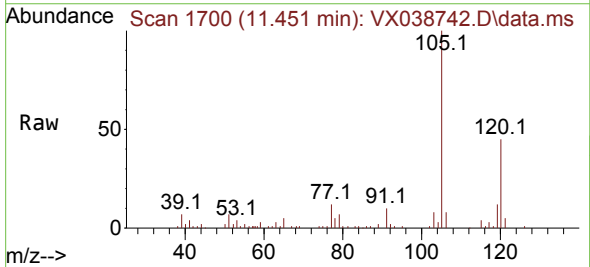
Instrument :  
 MSVOA\_X  
 ClientSampleId :

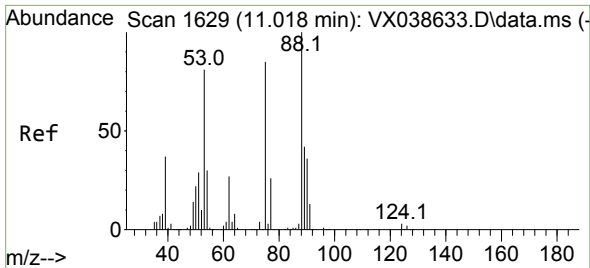
Tgt Ion: 91 Resp: 3310  
 Ion Ratio Lower Upper  
 91 100  
 126 6.9 16.3 48.8#



#80  
 1,3,5-Trimethylbenzene  
 Concen: 0.997 ug/l  
 RT: 11.451 min Scan# 1700  
 Delta R.T. 0.000 min  
 Lab File: VX038742.D  
 Acq: 10 Nov 2023 20:24

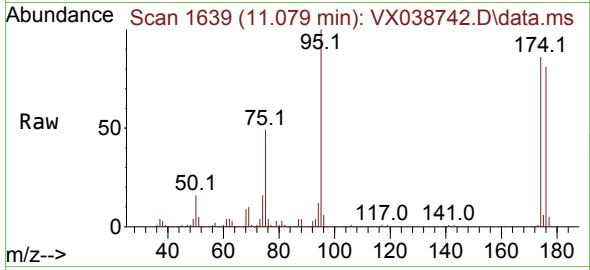
Tgt Ion: 105 Resp: 14251  
 Ion Ratio Lower Upper  
 105 100  
 120 48.3 24.1 72.3



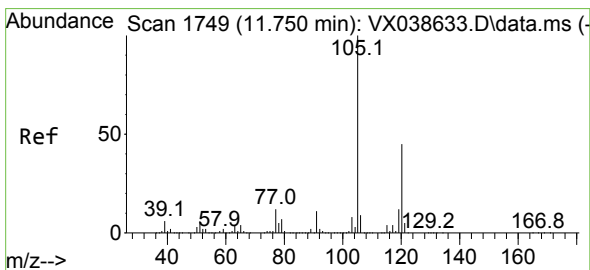
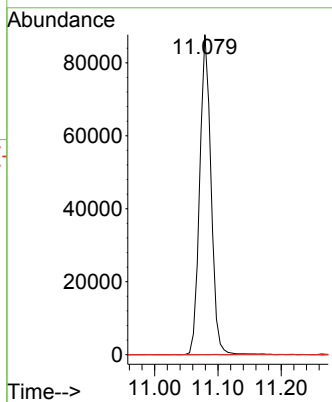
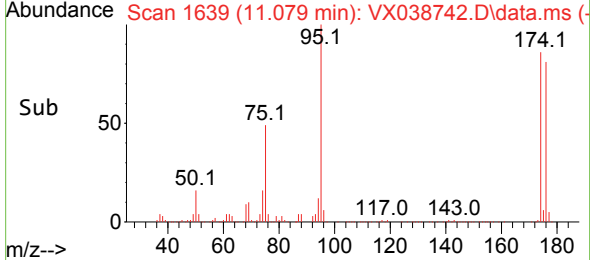


#81  
 trans-1,4-Dichloro-2-butene  
 Concen: 62.245 ug/l  
 RT: 11.079 min Scan# 1  
 Delta R.T. 0.061 min  
 Lab File: VX038742.D  
 Acq: 10 Nov 2023 20:24

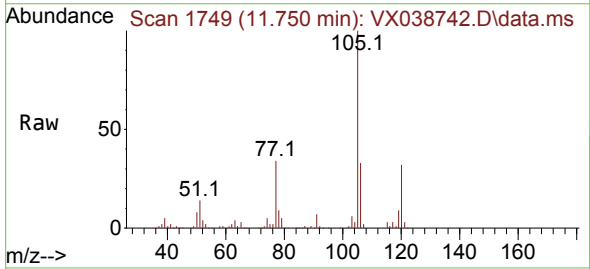
Instrument :  
 MSVOA\_X  
 ClientSampleId :



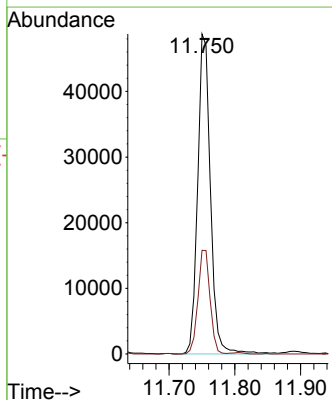
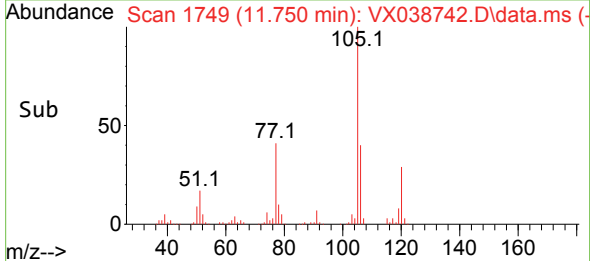
Tgt Ion: 75 Resp: 109475  
 Ion Ratio Lower Upper  
 75 100  
 53 0.0 90.5 135.7#  
 89 0.0 36.9 55.3#

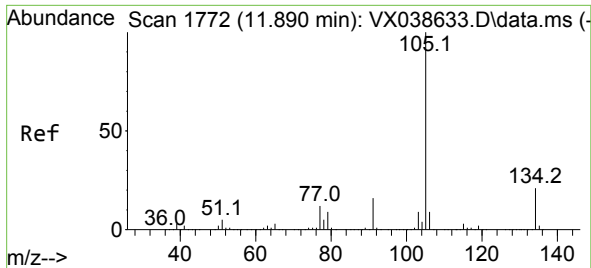


#84  
 1,2,4-Trimethylbenzene  
 Concen: 4.635 ug/l  
 RT: 11.750 min Scan# 1749  
 Delta R.T. 0.000 min  
 Lab File: VX038742.D  
 Acq: 10 Nov 2023 20:24



Tgt Ion: 105 Resp: 65738  
 Ion Ratio Lower Upper  
 105 100  
 120 30.6 21.2 63.6

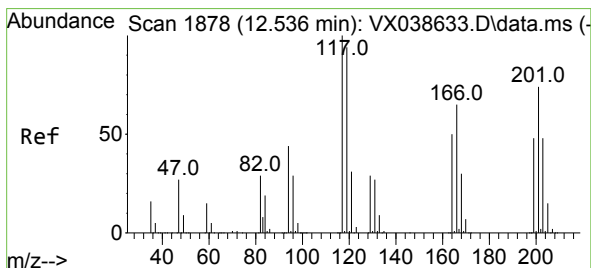
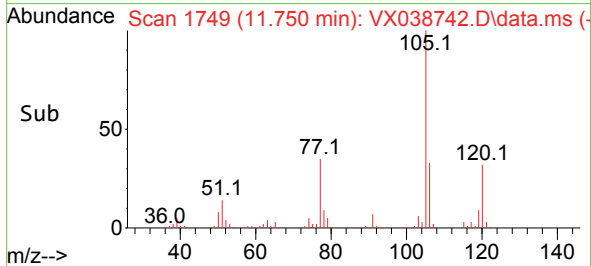
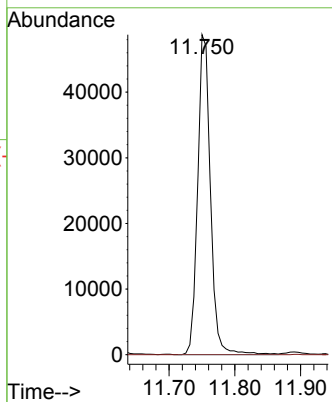
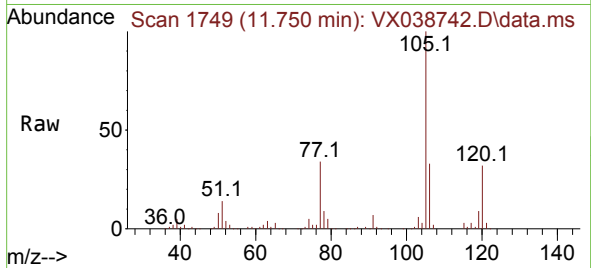




#85  
 sec-Butylbenzene  
 Concen: 3.636 ug/l  
 RT: 11.750 min Scan# 11749  
 Delta R.T. -0.140 min  
 Lab File: VX038742.D  
 Acq: 10 Nov 2023 20:24

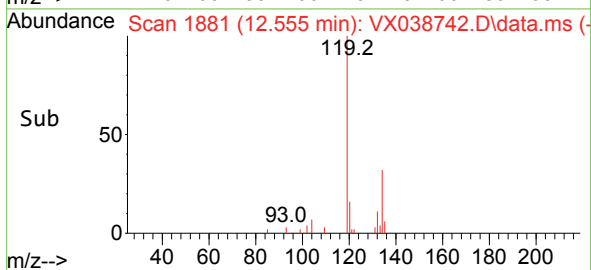
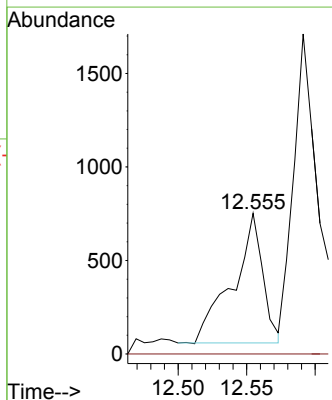
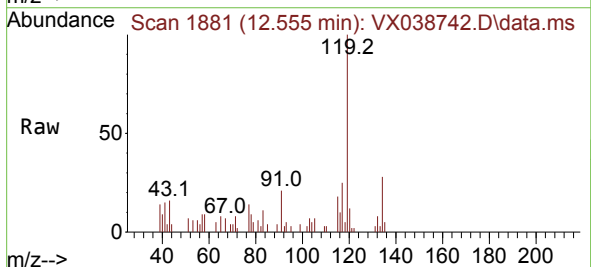
Instrument : MSVOA\_X  
 ClientSampleId :

Tgt Ion:105 Resp: 65738  
 Ion Ratio Lower Upper  
 105 100  
 134 0.0 9.8 29.4#

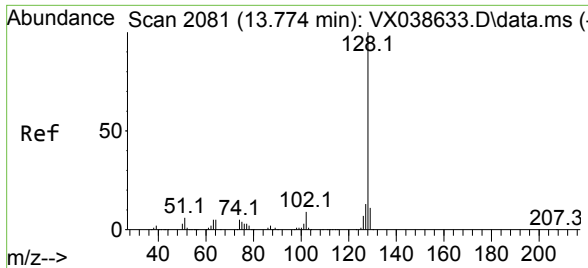


#90  
 Hexachloroethane  
 Concen: 0.406 ug/l  
 RT: 12.555 min Scan# 1881  
 Delta R.T. 0.019 min  
 Lab File: VX038742.D  
 Acq: 10 Nov 2023 20:24

Tgt Ion:117 Resp: 1058  
 Ion Ratio Lower Upper  
 117 100  
 201 0.0 32.9 98.6#

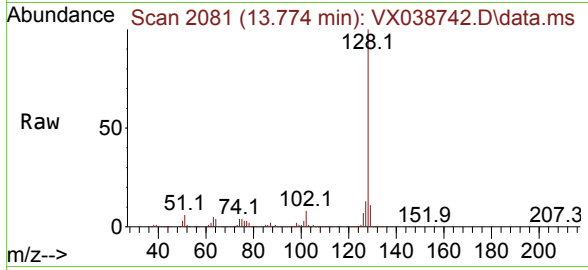






#95  
 Naphthalene  
 Concen: 18.730 ug/l  
 RT: 13.774 min Scan# 20  
 Delta R.T. 0.000 min  
 Lab File: VX038742.D  
 Acq: 10 Nov 2023 20:24

Instrument :  
 MSVOA\_X  
 ClientSampleId :



Tgt Ion:128 Resp: 344036

Ion	Ratio	Lower	Upper
128	100		
127	12.8	10.3	15.5
129	10.9	8.8	13.2

