

Data Path : Z:\voasrv\HPCHEM1\MSVOA_X\Data\VX111023\
 Data File : VX038761.D
 Acq On : 11 Nov 2023 05:55
 Operator : JC/MD
 Sample : 05357-02
 Misc : 5.0mL/MSVOA_X/WATER
 ALS Vial : 50 Sample Multiplier: 1

Instrument :
 MSVOA_X
 ClientSampleId :
 TB01-20231107

Quant Time: Nov 13 01:06:26 2023
 Quant Method : Z:\voasrv\HPCHEM1\MSVOA_X\Method\82X110723W.M
 Quant Title : SW846 8260
 QLast Update : Wed Nov 08 03:19:07 2023
 Response via : Initial Calibration

Compound	R.T.	QIon	Response	Conc	Units	Dev(Min)

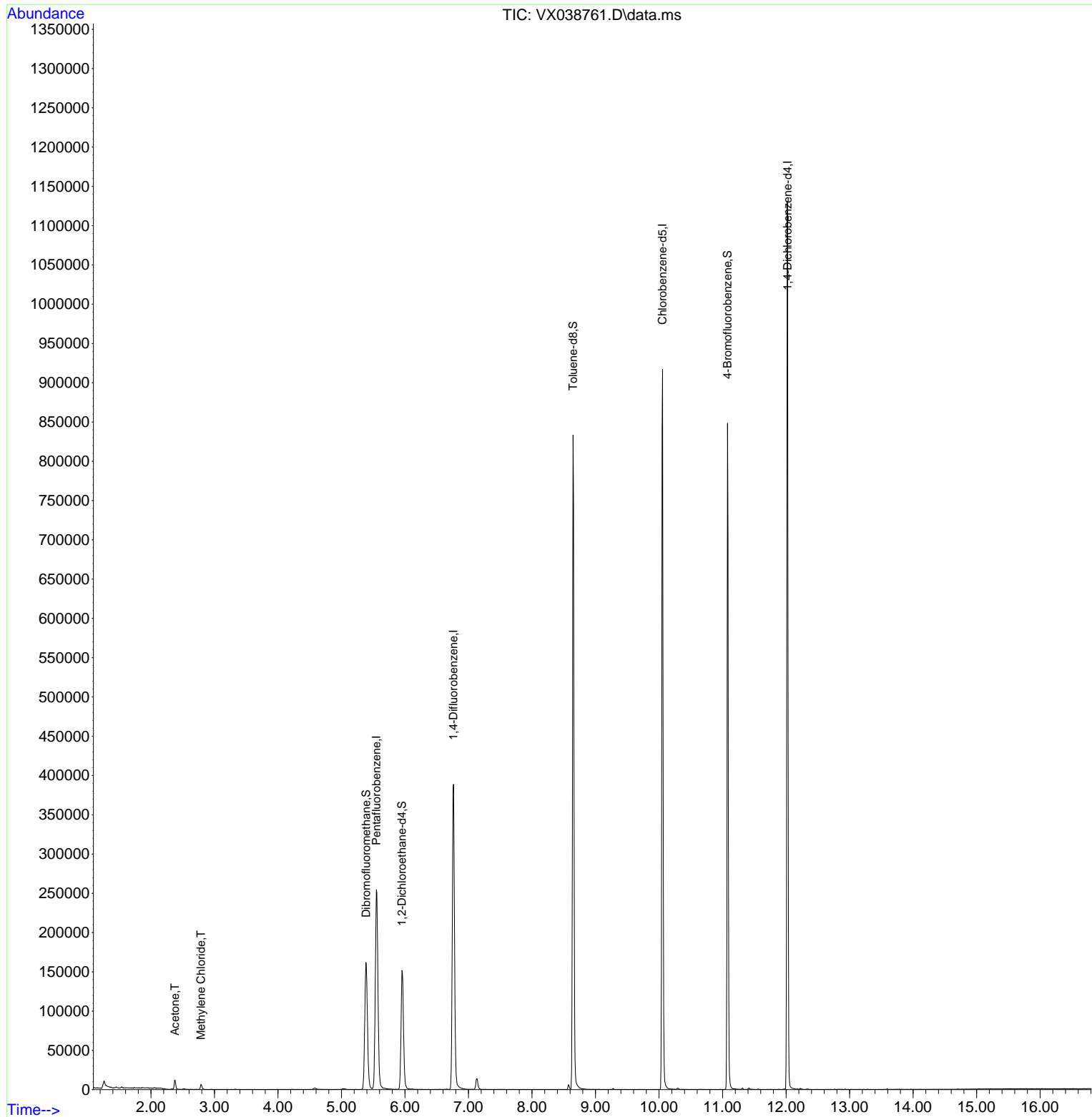
Internal Standards						
1) Pentafluorobenzene	5.550	168	264118	50.000	ug/l	# 0.00
34) 1,4-Difluorobenzene	6.763	114	437715	50.000	ug/l	0.00
63) Chlorobenzene-d5	10.055	117	461320	50.000	ug/l	0.00
72) 1,4-Dichlorobenzene-d4	12.024	152	264832	50.000	ug/l	0.00
System Monitoring Compounds						
33) 1,2-Dichloroethane-d4	5.952	65	154804	47.079	ug/l	0.00
Spiked Amount	50.000	Range	78 - 117	Recovery	=	94.160%
35) Dibromofluoromethane	5.385	113	144226	45.749	ug/l	0.00
Spiked Amount	50.000	Range	75 - 124	Recovery	=	91.500%
50) Toluene-d8	8.647	98	523685	46.422	ug/l	0.00
Spiked Amount	50.000	Range	92 - 112	Recovery	=	92.840%
62) 4-Bromofluorobenzene	11.079	95	224772	51.390	ug/l	0.00
Spiked Amount	50.000	Range	83 - 123	Recovery	=	102.780%
Target Compounds						
						Qvalue
16) Acetone	2.380	43	12668	9.148	ug/l	# 89
20) Methylene Chloride	2.788	84	3220	1.153	ug/l	# 76

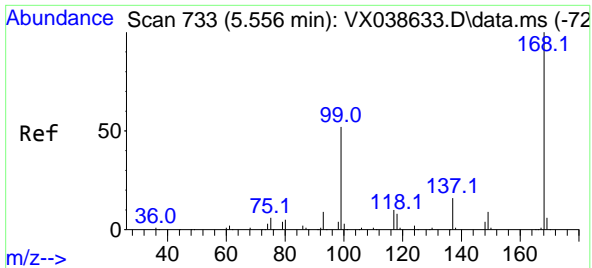
(#) = qualifier out of range (m) = manual integration (+) = signals summed

Data Path : Z:\voasrv\HPCHEM1\MSVOA_X\Data\VX111023\
 Data File : VX038761.D
 Acq On : 11 Nov 2023 05:55
 Operator : JC/MD
 Sample : 05357-02
 Misc : 5.0mL/MSVOA_X/WATER
 ALS Vial : 50 Sample Multiplier: 1

Instrument :
 MSVOA_X
 ClientSampleId :
 TB01-20231107

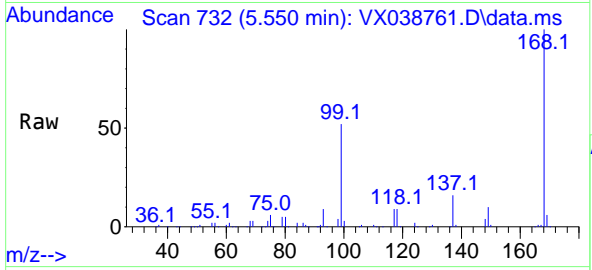
Quant Time: Nov 13 01:06:26 2023
 Quant Method : Z:\voasrv\HPCHEM1\MSVOA_X\Method\82X110723W.M
 Quant Title : SW846 8260
 QLast Update : Wed Nov 08 03:19:07 2023
 Response via : Initial Calibration



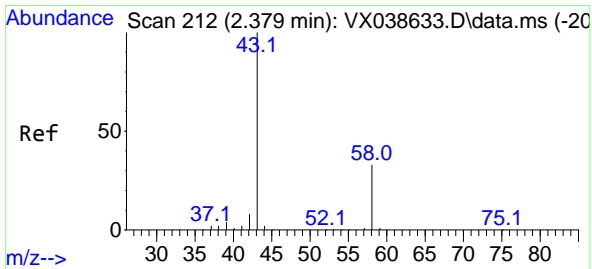
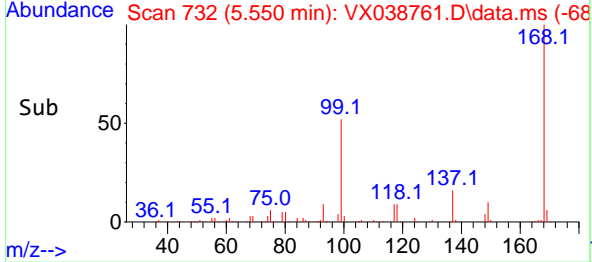
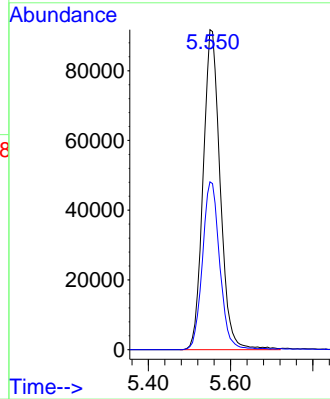


#1
 Pentafluorobenzene
 Concen: 50.000 ug/l
 RT: 5.550 min Scan# 71
 Delta R.T. -0.006 min
 Lab File: VX038761.D
 Acq: 11 Nov 2023 05:55

Instrument : MSVOA_X
 ClientSampleId : TB01-20231107

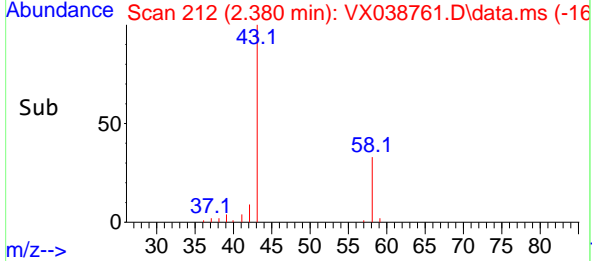
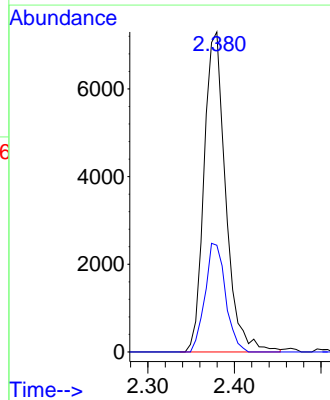
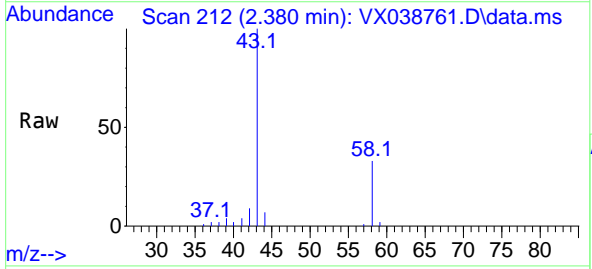


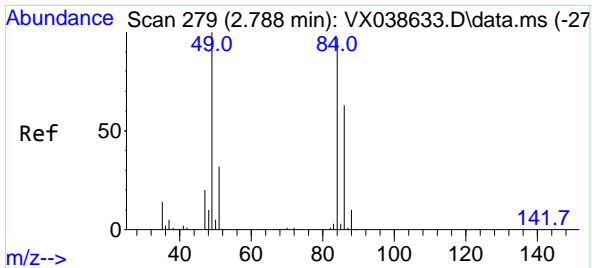
Tgt Ion:168 Resp: 264118
 Ion Ratio Lower Upper
 168 100
 99 52.4 56.6 85.0#



#16
 Acetone
 Concen: 9.148 ug/l
 RT: 2.380 min Scan# 212
 Delta R.T. 0.000 min
 Lab File: VX038761.D
 Acq: 11 Nov 2023 05:55

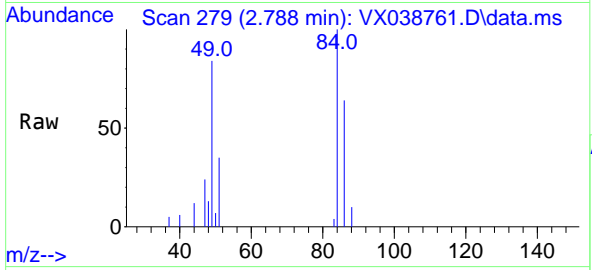
Tgt Ion: 43 Resp: 12668
 Ion Ratio Lower Upper
 43 100
 58 33.3 21.9 32.9#





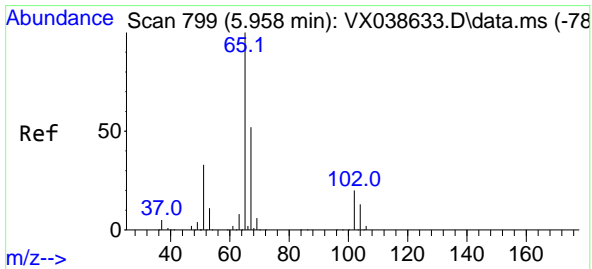
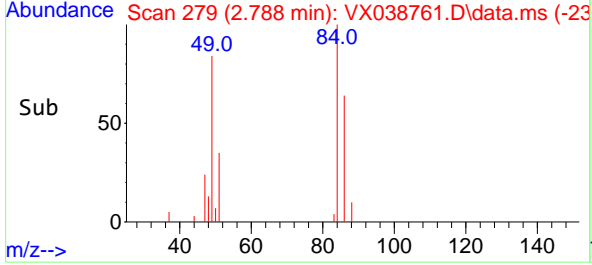
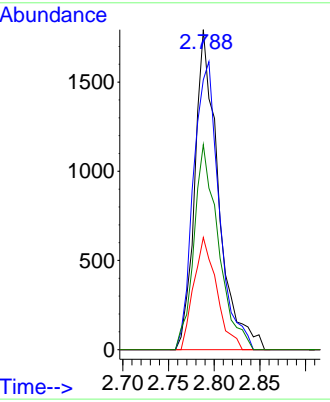
#20
 Methylene Chloride
 Concen: 1.153 ug/l
 RT: 2.788 min Scan# 21
 Delta R.T. 0.000 min
 Lab File: VX038761.D
 Acq: 11 Nov 2023 05:55

Instrument : MSVOA_X
 ClientSampleId : TB01-20231107

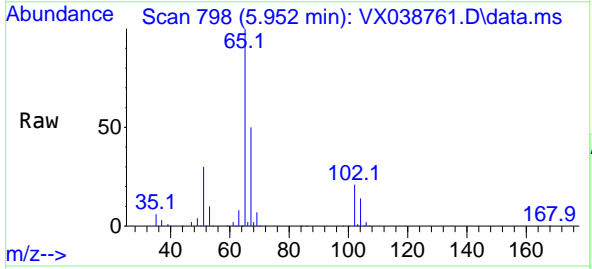


Tgt Ion: 84 Resp: 3220

Ion	Ratio	Lower	Upper
84	100		
49	84.3	103.6	155.4#
51	35.1	33.8	50.6
86	64.0	49.4	74.0

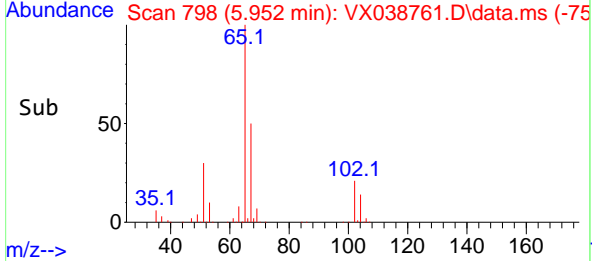
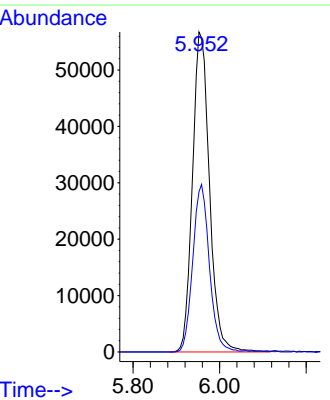


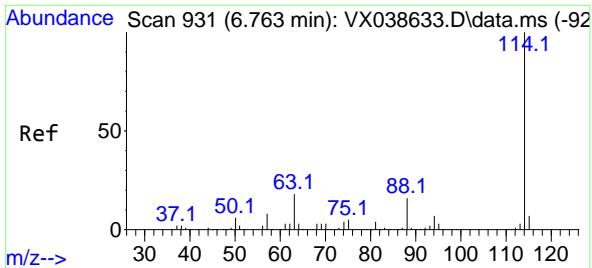
#33
 1,2-Dichloroethane-d4
 Concen: 47.079 ug/l
 RT: 5.952 min Scan# 798
 Delta R.T. -0.006 min
 Lab File: VX038761.D
 Acq: 11 Nov 2023 05:55



Tgt Ion: 65 Resp: 154804

Ion	Ratio	Lower	Upper
65	100		
67	51.1	0.0	100.2



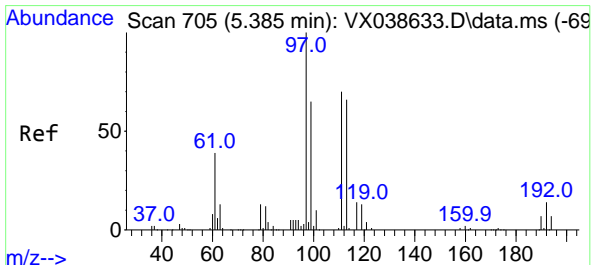
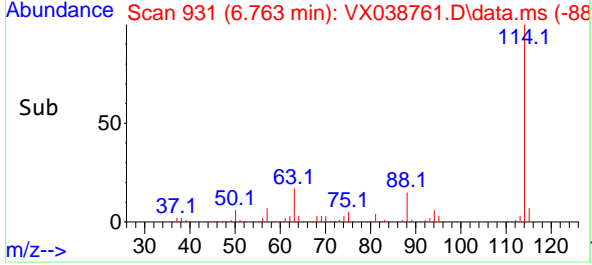
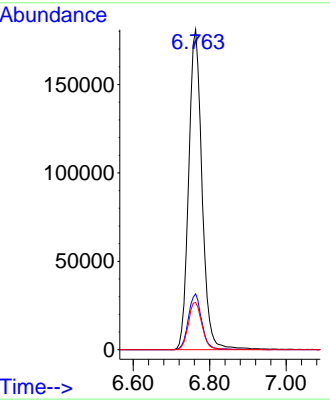
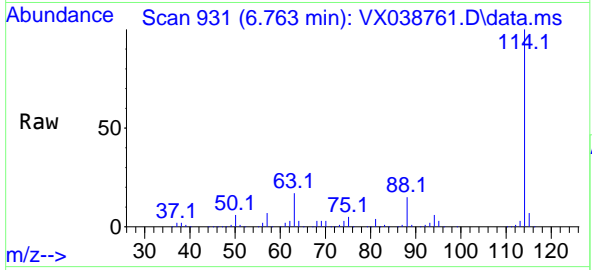


#34
 1,4-Difluorobenzene
 Concen: 50.000 ug/l
 RT: 6.763 min Scan# 911
 Delta R.T. 0.000 min
 Lab File: VX038761.D
 Acq: 11 Nov 2023 05:55

Instrument : MSVOA_X
 ClientSampleId : TB01-20231107

Tgt Ion:114 Resp: 437715

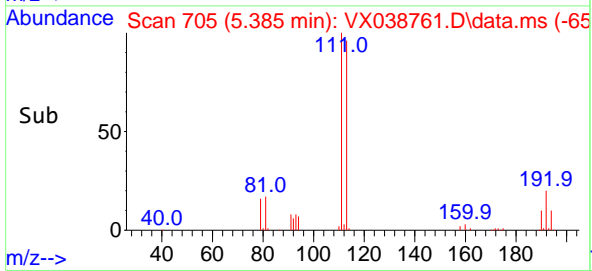
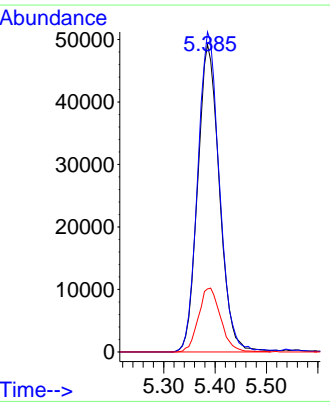
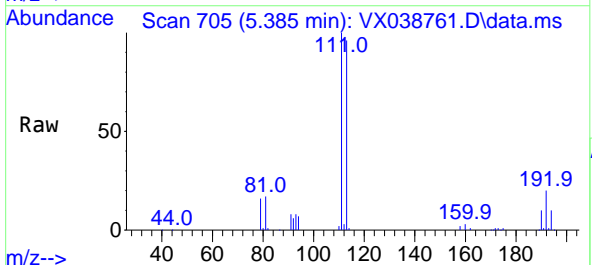
Ion	Ratio	Lower	Upper
114	100		
63	17.5	0.0	45.0
88	14.8	0.0	36.6

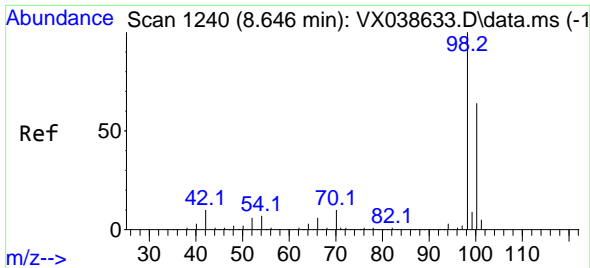


#35
 Dibromofluoromethane
 Concen: 45.749 ug/l
 RT: 5.385 min Scan# 705
 Delta R.T. 0.000 min
 Lab File: VX038761.D
 Acq: 11 Nov 2023 05:55

Tgt Ion:113 Resp: 144226

Ion	Ratio	Lower	Upper
113	100		
111	104.1	82.9	124.3
192	21.2	13.3	19.9

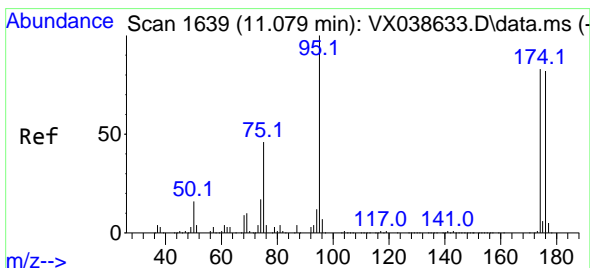
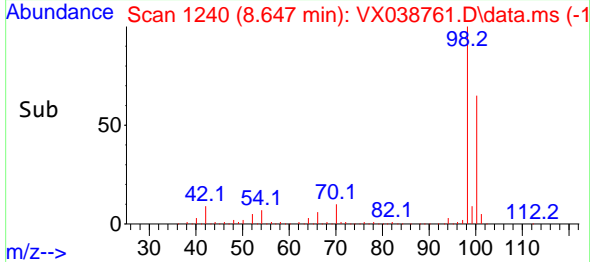
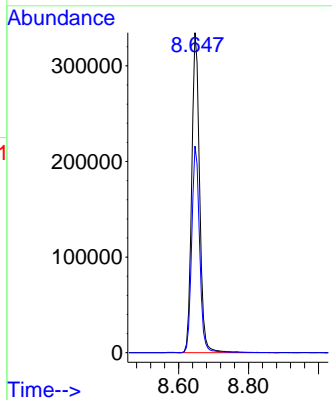
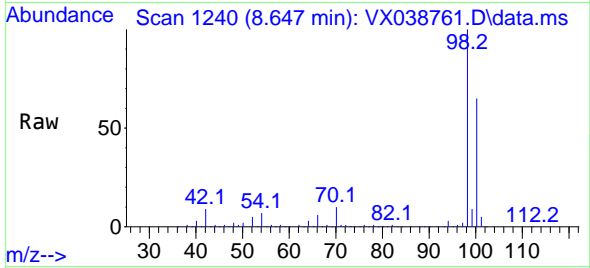




#50
 Toluene-d8
 Concen: 46.422 ug/l
 RT: 8.647 min Scan# 111
 Delta R.T. 0.000 min
 Lab File: VX038761.D
 Acq: 11 Nov 2023 05:55

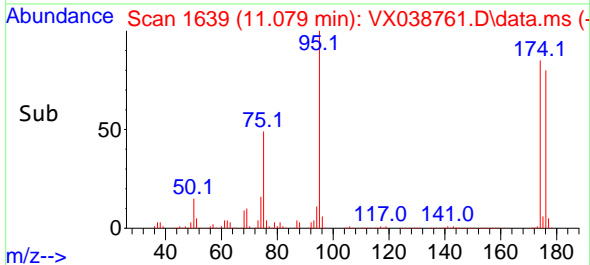
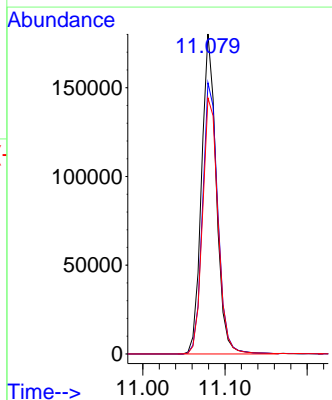
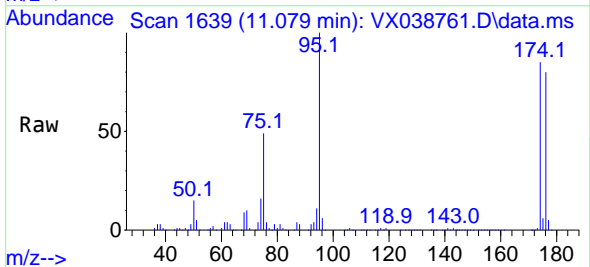
Instrument :
 MSVOA_X
 ClientSampleId :
 TB01-20231107

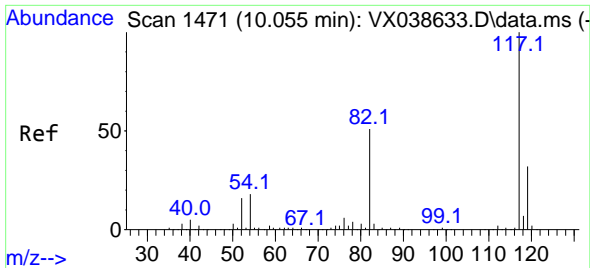
Tgt Ion: 98 Resp: 523685
 Ion Ratio Lower Upper
 98 100
 100 64.7 53.1 79.7



#62
 4-Bromofluorobenzene
 Concen: 51.390 ug/l
 RT: 11.079 min Scan# 1639
 Delta R.T. 0.000 min
 Lab File: VX038761.D
 Acq: 11 Nov 2023 05:55

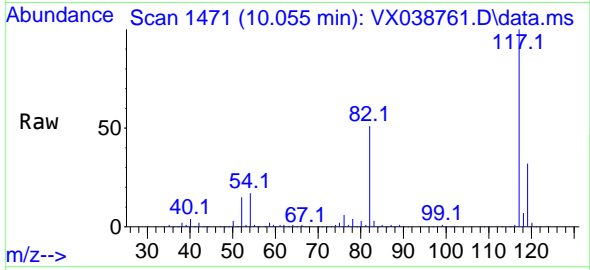
Tgt Ion: 95 Resp: 224772
 Ion Ratio Lower Upper
 95 100
 174 88.0 0.0 135.6
 176 84.0 0.0 131.0



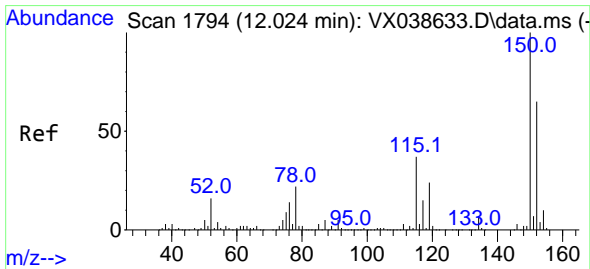
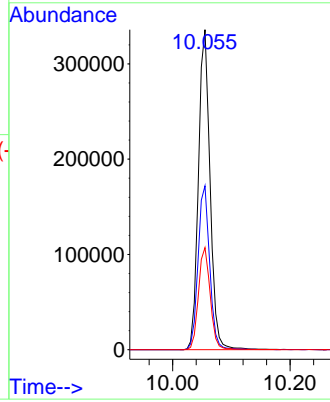
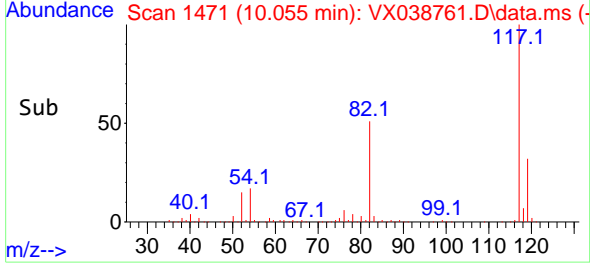


#63
 Chlorobenzene-d5
 Concen: 50.000 ug/l
 RT: 10.055 min Scan# 1471
 Delta R.T. 0.000 min
 Lab File: VX038761.D
 Acq: 11 Nov 2023 05:55

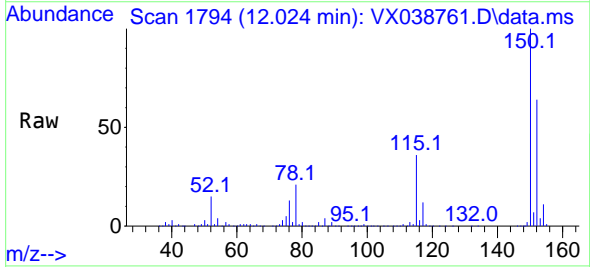
Instrument : MSVOA_X
 ClientSampleId : TB01-20231107



Tgt Ion:117 Resp: 461320
 Ion Ratio Lower Upper
 117 100
 82 51.2 46.2 69.4
 119 31.9 25.5 38.3



#72
 1,4-Dichlorobenzene-d4
 Concen: 50.000 ug/l
 RT: 12.024 min Scan# 1794
 Delta R.T. 0.000 min
 Lab File: VX038761.D
 Acq: 11 Nov 2023 05:55



Tgt Ion:152 Resp: 264832
 Ion Ratio Lower Upper
 152 100
 115 58.0 43.3 129.9
 150 156.7 0.0 345.0

