

Data Path : Z:\voasrv\HPCHEM1\MSVOA_X\Data\VX111121\
 Data File : VX025137.D
 Acq On : 11 Nov 2021 18:41
 Operator : JC/MD
 Sample : M4645-02
 Misc : 5.0mL/MSVOA_X/WATER
 ALS Vial : 15 Sample Multiplier: 1

Instrument :
 MSVOA_X
 ClientSampleId :

Quant Time: Nov 12 05:08:52 2021
 Quant Method : Z:\voasrv\HPCHEM1\MSVOA_X\Method\SFAMXLM111121WMA.M
 Quant Title : VOC Analysis
 QLast Update : Fri Nov 12 05:08:01 2021
 Response via : Initial Calibration

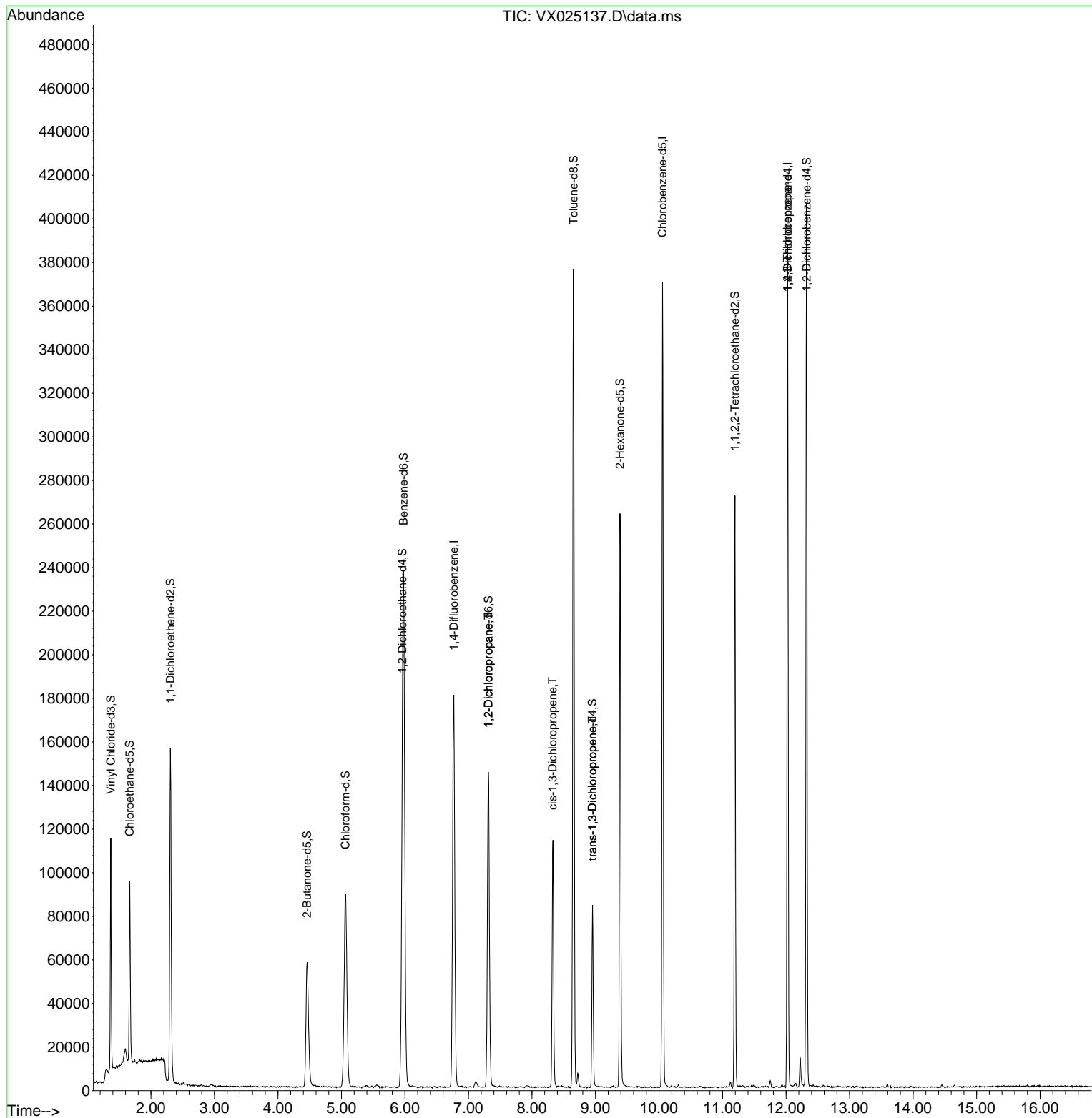
| Compound | R.T. | QIon | Response | Conc | Units | Dev(Min) |
|-------------------------------|---------|----------------|------------|-----------|--------|----------|
| Internal Standards | | | | | | |
| 1) 1,4-Difluorobenzene | 6.769 | 114 | 195759 | 50.000 | ug/L | 0.00 |
| 28) Chlorobenzene-d5 | 10.055 | 117 | 173522 | 50.000 | ug/L | 0.00 |
| 58) 1,4-Dichlorobenzene-d4 | 12.024 | 152 | 81550 | 50.000 | ug/L | 0.00 |
| System Monitoring Compounds | | | | | | |
| 4) Vinyl Chloride-d3 | 1.368 | 65 | 65697 | 49.676 | ug/L | 0.00 |
| Spiked Amount | 50.000 | Range 60 - 135 | Recovery = | 99.360% | | |
| 7) Chloroethane-d5 | 1.666 | 69 | 51855 | 68.797 | ug/L | 0.00 |
| Spiked Amount | 50.000 | Range 70 - 130 | Recovery = | 137.600%# | | |
| 11) 1,1-Dichloroethene-d2 | 2.306 | 63 | 81652 | 35.897 | ug/L | 0.00 |
| Spiked Amount | 50.000 | Range 60 - 125 | Recovery = | 71.800% | | |
| 21) 2-Butanone-d5 | 4.458 | 46 | 101591 | 101.651 | ug/L | 0.00 |
| Spiked Amount | 100.000 | Range 40 - 130 | Recovery = | 101.650% | | |
| 24) Chloroform-d | 5.062 | 84 | 113506 | 48.787 | ug/L | 0.00 |
| Spiked Amount | 50.000 | Range 70 - 125 | Recovery = | 97.580% | | |
| 26) 1,2-Dichloroethane-d4 | 5.958 | 65 | 70114 | 49.718 | ug/L | 0.00 |
| Spiked Amount | 50.000 | Range 70 - 125 | Recovery = | 99.440% | | |
| 32) Benzene-d6 | 5.976 | 84 | 242313 | 51.165 | ug/L | 0.00 |
| Spiked Amount | 50.000 | Range 70 - 125 | Recovery = | 102.320% | | |
| 36) 1,2-Dichloropropane-d6 | 7.312 | 67 | 75561 | 52.252 | ug/L | 0.00 |
| Spiked Amount | 50.000 | Range 70 - 120 | Recovery = | 104.500% | | |
| 41) Toluene-d8 | 8.653 | 98 | 225436 | 49.846 | ug/L | 0.00 |
| Spiked Amount | 50.000 | Range 80 - 120 | Recovery = | 99.700% | | |
| 43) trans-1,3-Dichloroprop... | 8.952 | 79 | 39002 | 49.684 | ug/L | 0.00 |
| Spiked Amount | 50.000 | Range 60 - 125 | Recovery = | 99.360% | | |
| 47) 2-Hexanone-d5 | 9.384 | 63 | 78978 | 101.707 | ug/L | 0.00 |
| Spiked Amount | 100.000 | Range 45 - 130 | Recovery = | 101.710% | | |
| 56) 1,1,2,2-Tetrachloroeth... | 11.195 | 84 | 103029 | 49.467 | ug/L | 0.00 |
| Spiked Amount | 50.000 | Range 65 - 120 | Recovery = | 98.940% | | |
| 66) 1,2-Dichlorobenzene-d4 | 12.323 | 152 | 83821 | 51.850 | ug/L | 0.00 |
| Spiked Amount | 50.000 | Range 80 - 120 | Recovery = | 103.700% | | |
| Target Compounds | | | | | | |
| 37) 1,2-Dichloropropane | 7.312 | 63 | 8017 | 6.003 | ug/L # | 85 |
| 39) cis-1,3-Dichloropropene | 8.324 | 75 | 2559 | 1.167 | ug/L # | 60 |
| 44) trans-1,3-Dichloropropene | 8.952 | 75 | 1724 | 0.808 | ug/L # | 79 |
| 61) 1,2,3-Trichloropropane | 12.024 | 75 | 9326 | 6.073 | ug/L # | 62 |

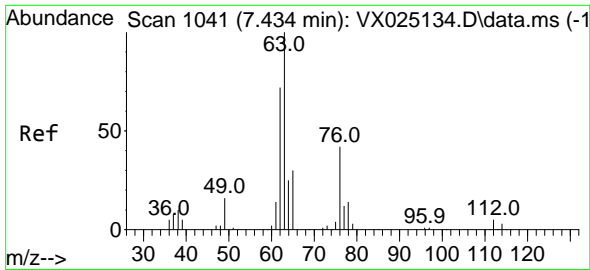
(#) = qualifier out of range (m) = manual integration (+) = signals summed

Data Path : Z:\voasrv\HPCHEM1\MSVOA_X\Data\VX111121\
 Data File : VX025137.D
 Acq On : 11 Nov 2021 18:41
 Operator : JC/MD
 Sample : M4645-02
 Misc : 5.0mL/MSVOA_X/WATER
 ALS Vial : 15 Sample Multiplier: 1

Instrument :
 MSVOA_X
 ClientSampleId :

Quant Time: Nov 12 05:08:52 2021
 Quant Method : Z:\voasrv\HPCHEM1\MSVOA_X\Method\SFAMXLM111121WMA.M
 Quant Title : VOC Analysis
 QLast Update : Fri Nov 12 05:08:01 2021
 Response via : Initial Calibration

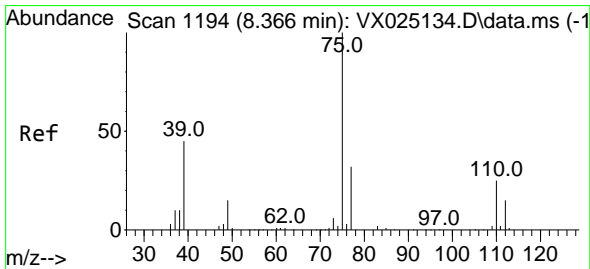
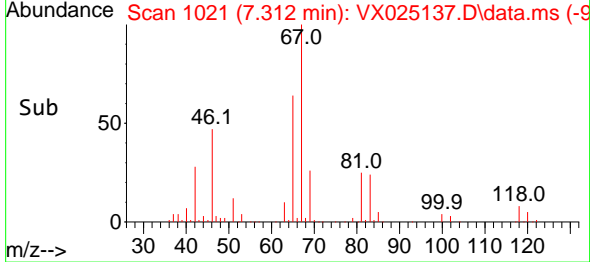
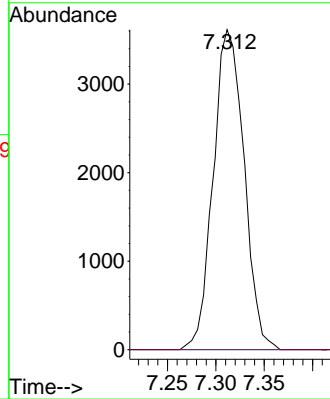
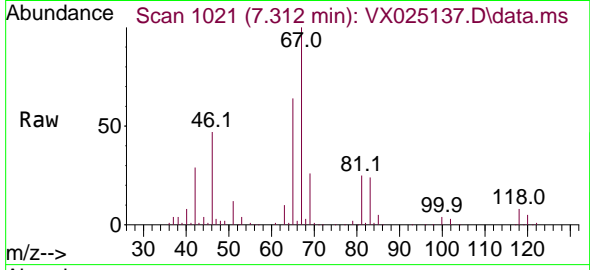




#37
 1,2-Dichloropropane
 Concen: 6.003 ug/L
 RT: 7.312 min Scan# 1041
 Delta R.T. -0.122 min
 Lab File: VX025137.D
 Acq: 11 Nov 2021 18:41

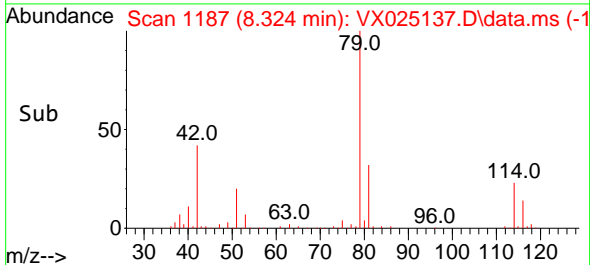
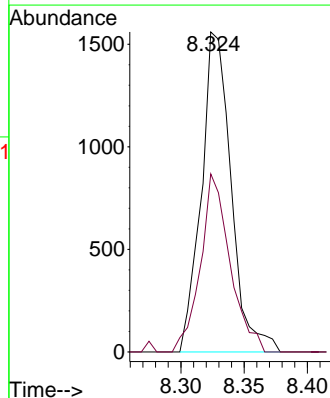
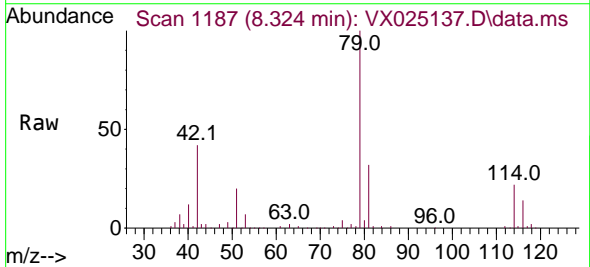
Instrument : MSVOA_X
 ClientSampleId :

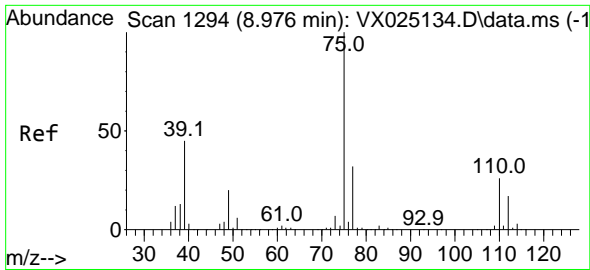
Tgt Ion: 63 Resp: 8017
 Ion Ratio Lower Upper
 63 100
 112 0.0 4.0 6.0#



#39
 cis-1,3-Dichloropropene
 Concen: 1.167 ug/L
 RT: 8.324 min Scan# 1187
 Delta R.T. -0.043 min
 Lab File: VX025137.D
 Acq: 11 Nov 2021 18:41

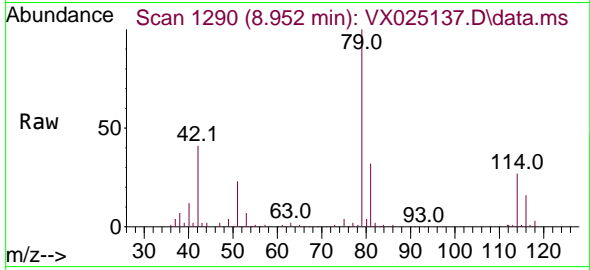
Tgt Ion: 75 Resp: 2559
 Ion Ratio Lower Upper
 75 100
 77 55.6 23.1 42.9#



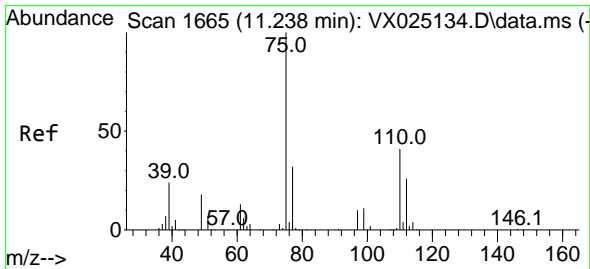
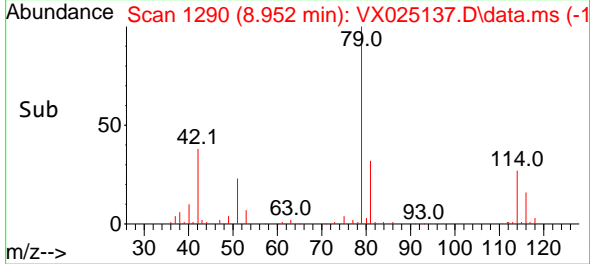
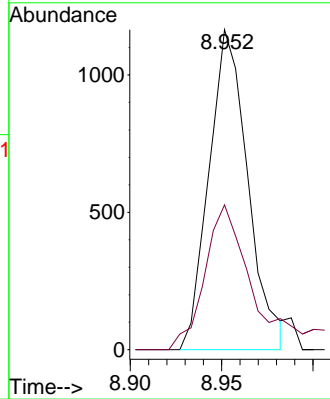


#44
 trans-1,3-Dichloropropene
 Concen: 0.808 ug/L
 RT: 8.952 min Scan# 1179
 Delta R.T. -0.025 min
 Lab File: VX025137.D
 Acq: 11 Nov 2021 18:41

Instrument : MSVOA_X
 ClientSampleId :



Tgt Ion: 75 Resp: 1724
 Ion Ratio Lower Upper
 75 100
 77 45.2 23.4 43.6#



#61
 1,2,3-Trichloropropane
 Concen: 6.073 ug/L
 RT: 12.024 min Scan# 1794
 Delta R.T. 0.786 min
 Lab File: VX025137.D
 Acq: 11 Nov 2021 18:41

Tgt Ion: 75 Resp: 9326
 Ion Ratio Lower Upper
 75 100
 77 33.7 26.6 39.8
 110 3.4 37.2 55.8#

