

Data Path : Z:\voasrv\HPCHEM1\MSVOA_X\Data\VX111122\
 Data File : VX032764.D
 Acq On : 11 Nov 2022 11:09
 Operator : JC/MD
 Sample : N5565-02
 Misc : 5.0mL/MSVOA_X/WATER
 ALS Vial : 6 Sample Multiplier: 1

Instrument :
 MSVOA_X
ClientSampleId :
 221109040-01-TRIP-BLANK

Quant Time: Nov 14 05:10:23 2022
 Quant Method : Z:\voasrv\HPCHEM1\MSVOA_X\Method\624X111022W.M
 Quant Title : METHOD 624 VOLATILE ORGANIC ANALYSIS
 QLast Update : Fri Nov 11 05:24:06 2022
 Response via : Initial Calibration

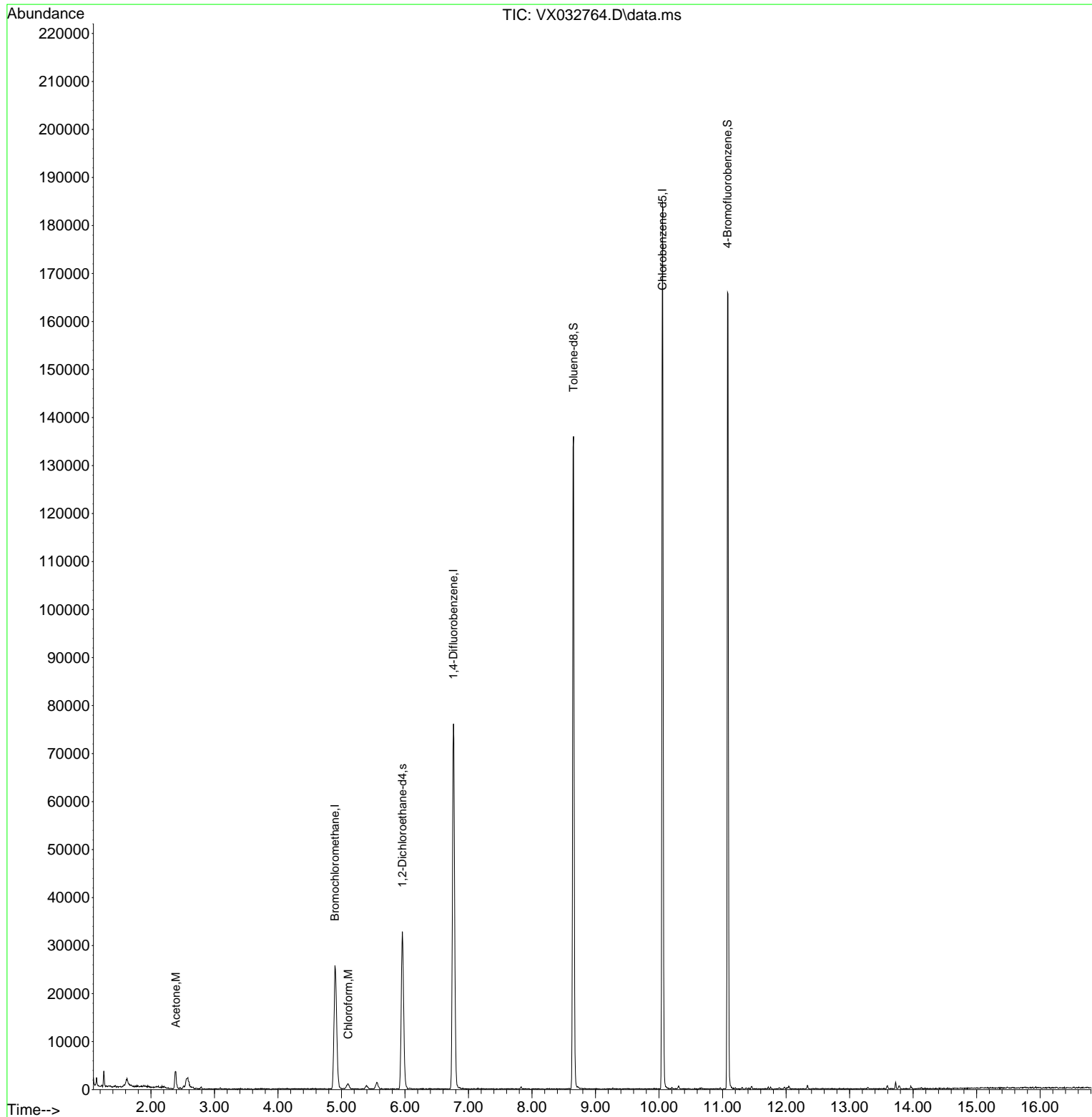
| Compound | R.T. | QIon | Response | Conc | Units | Dev(Min) |
|-----------------------------|--------|-------|----------|----------|--------|----------|
| ----- | | | | | | |
| Internal Standards | | | | | | |
| 1) Bromochloromethane | 4.897 | 128 | 10891 | 30.000 | ug/l | 0.00 |
| 28) 1,4-Difluorobenzene | 6.763 | 114 | 78733 | 30.000 | ug/l | 0.00 |
| 57) Chlorobenzene-d5 | 10.055 | 117 | 80513 | 30.000 | ug/l | 0.00 |
| System Monitoring Compounds | | | | | | |
| 27) 1,2-Dichloroethane-d4 | 5.958 | 65 | 33411 | 31.799 | ug/l | 0.00 |
| Spiked Amount | 30.000 | Range | 91 - 110 | Recovery | = | 106.000% |
| 60) 4-Bromofluorobenzene | 11.079 | 95 | 42897 | 27.853 | ug/l | 0.00 |
| Spiked Amount | 30.000 | Range | 63 - 112 | Recovery | = | 92.833% |
| 63) Toluene-d8 | 8.653 | 98 | 82896 | 30.509 | ug/l | 0.00 |
| Spiked Amount | 30.000 | Range | 91 - 112 | Recovery | = | 101.700% |
| Target Compounds | | | | | | |
| | | | | | | Qvalue |
| 15) Acetone | 2.392 | 58 | 1323 | 9.043 | ug/l # | 54 |
| 25) Chloroform | 5.105 | 83 | 1458 | 0.617 | ug/l | 88 |
| ----- | | | | | | |

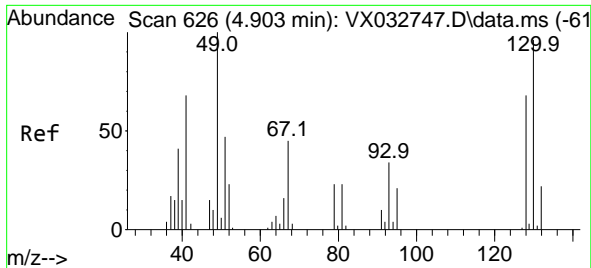
(#) = qualifier out of range (m) = manual integration (+) = signals summed

Data Path : Z:\voasrv\HPCHEM1\MSVOA_X\Data\VX111122\
 Data File : VX032764.D
 Acq On : 11 Nov 2022 11:09
 Operator : JC/MD
 Sample : N5565-02
 Misc : 5.0mL/MSVOA_X/WATER
 ALS Vial : 6 Sample Multiplier: 1

Instrument :
 MSVOA_X
 ClientSampleId :
 221109040-01-TRIP-BLANK

Quant Time: Nov 14 05:10:23 2022
 Quant Method : Z:\voasrv\HPCHEM1\MSVOA_X\Method\624X111022W.M
 Quant Title : METHOD 624 VOLATILE ORGANIC ANALYSIS
 QLast Update : Fri Nov 11 05:24:06 2022
 Response via : Initial Calibration



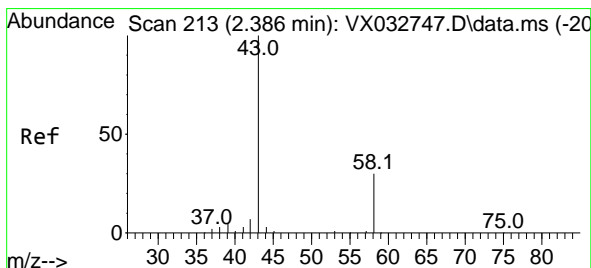
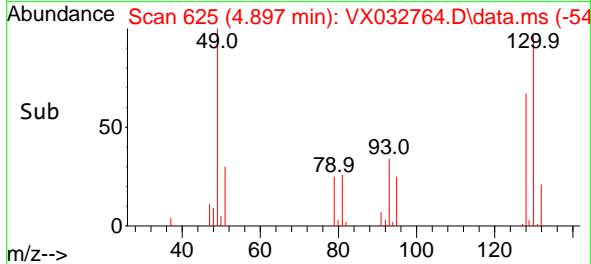
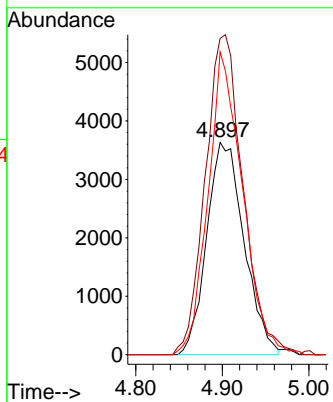
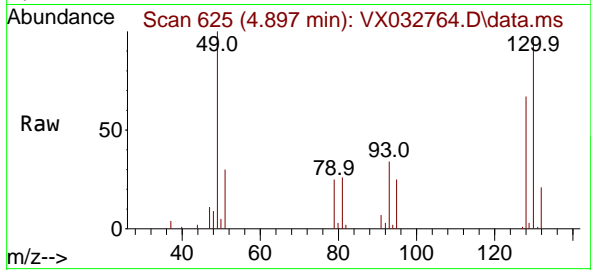


#1
 Bromochloromethane
 Concen: 30.000 ug/l
 RT: 4.897 min Scan# 61
 Delta R.T. -0.006 min
 Lab File: VX032764.D
 Acq: 11 Nov 2022 11:09

Instrument : MSVOA_X
 ClientSampleId : 221109040-01-TRIP-BLANK

Tgt Ion:128 Resp: 10891

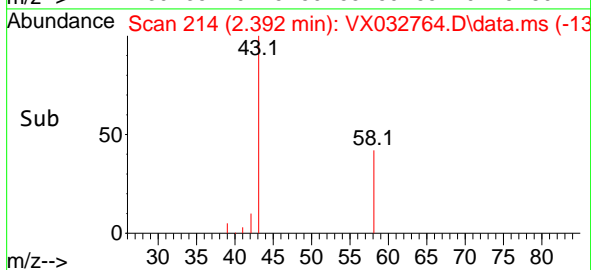
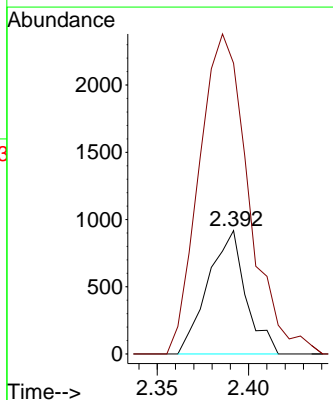
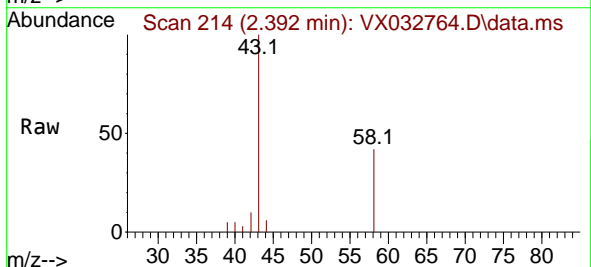
| Ion | Ratio | Lower | Upper |
|-----|-------|-------|-------|
| 128 | 100 | | |
| 49 | 152.3 | 0.0 | 293.0 |
| 130 | 131.4 | 0.0 | 321.5 |

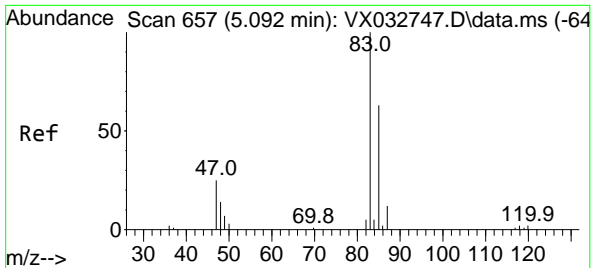


#15
 Acetone
 Concen: 9.043 ug/l
 RT: 2.392 min Scan# 214
 Delta R.T. 0.006 min
 Lab File: VX032764.D
 Acq: 11 Nov 2022 11:09

Tgt Ion: 58 Resp: 1323

| Ion | Ratio | Lower | Upper |
|-----|-------|-------|--------|
| 58 | 100 | | |
| 43 | 213.2 | 242.6 | 364.0# |

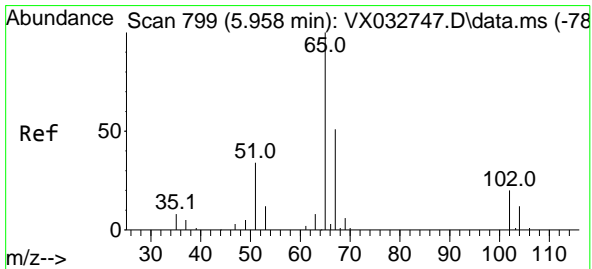
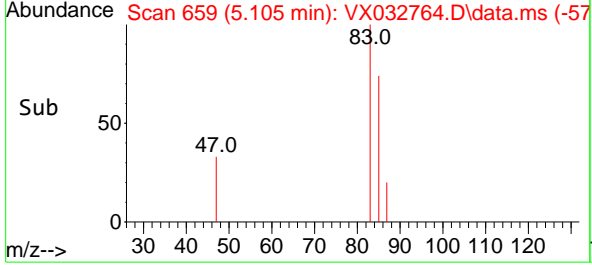
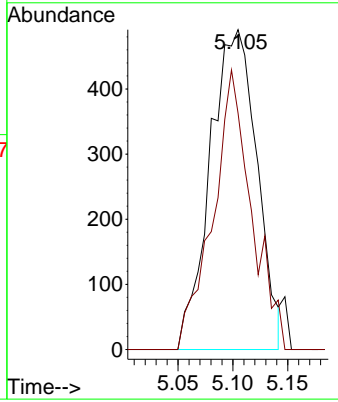
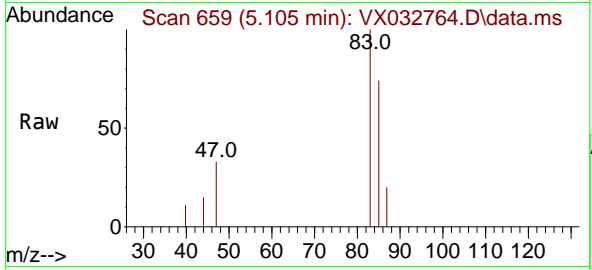




#25
 Chloroform
 Concen: 0.617 ug/l
 RT: 5.105 min Scan# 61
 Delta R.T. 0.012 min
 Lab File: VX032764.D
 Acq: 11 Nov 2022 11:09

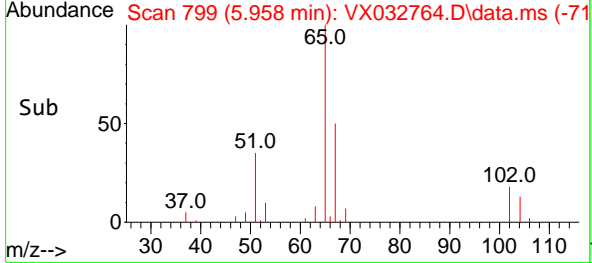
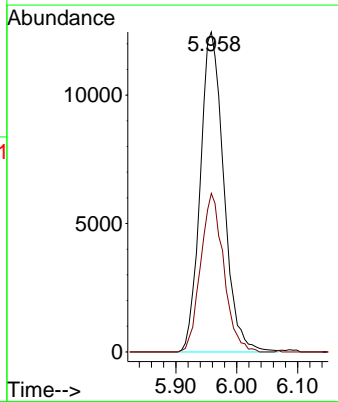
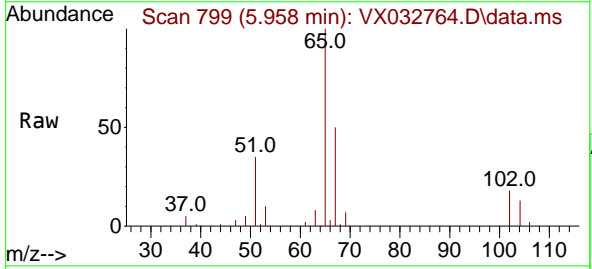
Instrument : MSVOA_X
 ClientSampleId : 221109040-01-TRIP-BLANK

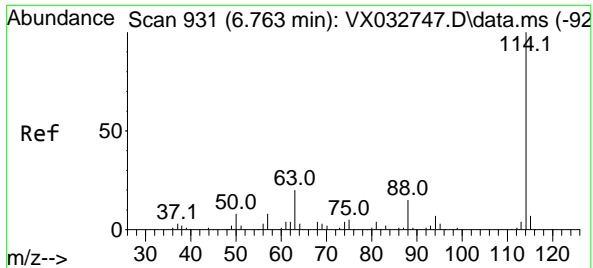
Tgt Ion: 83 Resp: 1458
 Ion Ratio Lower Upper
 83 100
 85 73.9 51.4 77.0



#27
 1,2-Dichloroethane-d4
 Concen: 31.799 ug/l
 RT: 5.958 min Scan# 799
 Delta R.T. 0.000 min
 Lab File: VX032764.D
 Acq: 11 Nov 2022 11:09

Tgt Ion: 65 Resp: 33411
 Ion Ratio Lower Upper
 65 100
 67 48.4 41.8 62.6

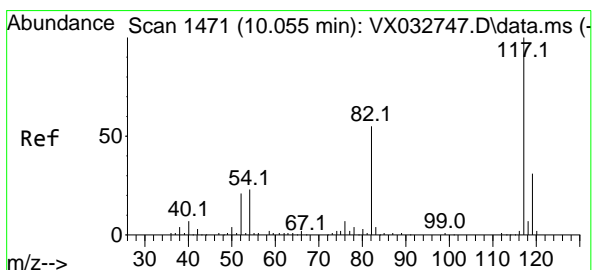
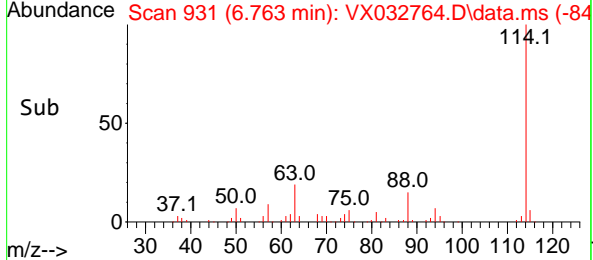
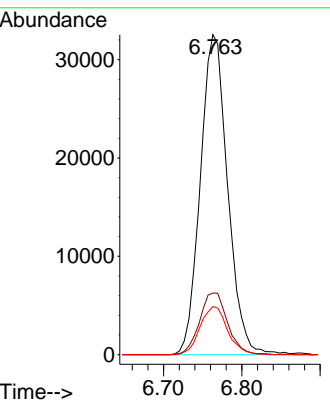
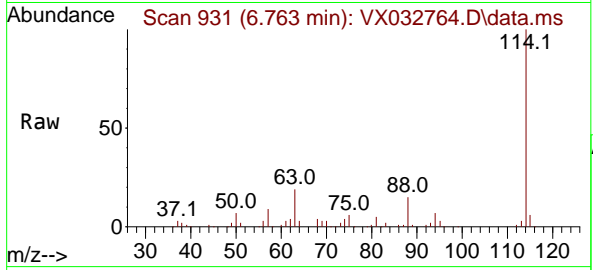




#28
 1,4-Difluorobenzene
 Concen: 30.000 ug/l
 RT: 6.763 min Scan# 91
 Delta R.T. 0.000 min
 Lab File: VX032764.D
 Acq: 11 Nov 2022 11:09

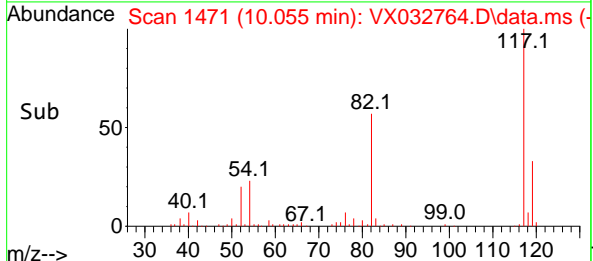
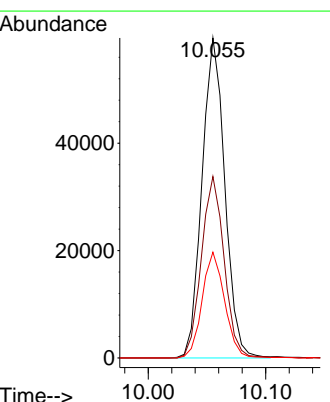
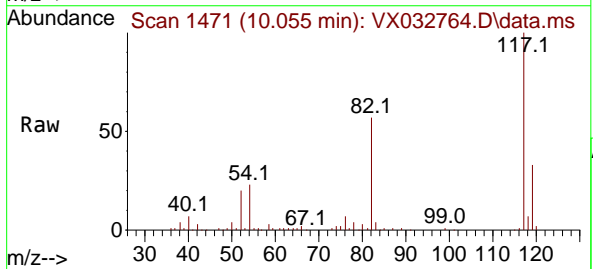
Instrument : MSVOA_X
 ClientSampleId : 221109040-01-TRIP-BLANK

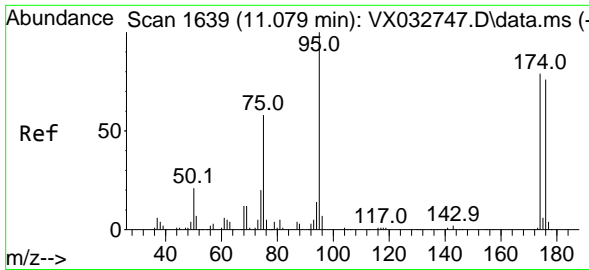
| Tgt Ion | Resp | Lower | Upper |
|---------|-------|-------|-------|
| 114 | 78733 | | |
| 63 | 19.8 | 13.6 | 20.4 |
| 88 | 15.1 | 11.8 | 17.6 |



#57
 Chlorobenzene-d5
 Concen: 30.000 ug/l
 RT: 10.055 min Scan# 1471
 Delta R.T. 0.000 min
 Lab File: VX032764.D
 Acq: 11 Nov 2022 11:09

| Tgt Ion | Resp | Lower | Upper |
|---------|-------|-------|-------|
| 117 | 80513 | | |
| 82 | 56.7 | 40.0 | 60.0 |
| 119 | 32.6 | 26.0 | 39.0 |



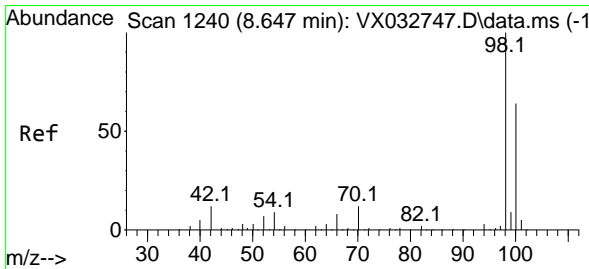
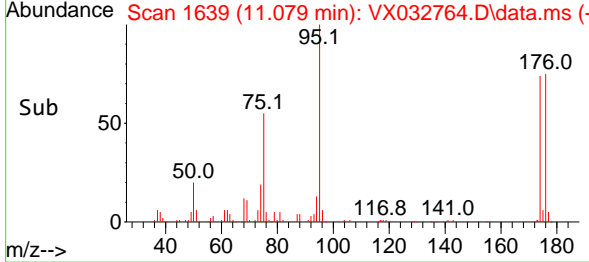
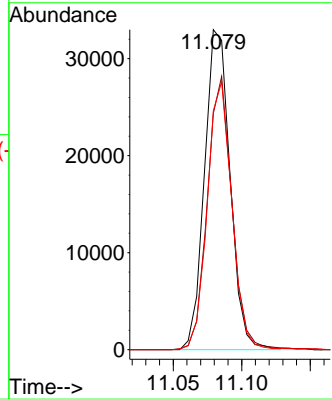
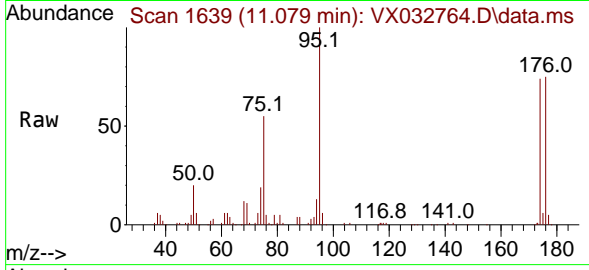


#60
 4-Bromofluorobenzene
 Concen: 27.853 ug/l
 RT: 11.079 min Scan# 11
 Delta R.T. 0.000 min
 Lab File: VX032764.D
 Acq: 11 Nov 2022 11:09

Instrument : MSVOA_X
 ClientSampleId : 221109040-01-TRIP-BLANK

Tgt Ion: 95 Resp: 42897

| Ion | Ratio | Lower | Upper |
|-----|-------|-------|-------|
| 95 | 100 | | |
| 174 | 82.2 | 68.2 | 102.2 |
| 176 | 80.4 | 68.1 | 102.1 |



#63
 Toluene-d8
 Concen: 30.509 ug/l
 RT: 8.653 min Scan# 1241
 Delta R.T. 0.006 min
 Lab File: VX032764.D
 Acq: 11 Nov 2022 11:09

Tgt Ion: 98 Resp: 82896

| Ion | Ratio | Lower | Upper |
|-----|-------|-------|-------|
| 98 | 100 | | |
| 100 | 62.7 | 53.8 | 80.8 |

