

Data Path : Z:\voasrv\HPCHEM1\MSVOA_X\Data\VX111124\
 Data File : VX043797.D
 Acq On : 11 Nov 2024 17:13
 Operator : JC/MD
 Sample : P4786-10
 Misc : 5.0mL/MSVOA_X/WATER
 ALS Vial : 22 Sample Multiplier: 1

Instrument :
 MSVOA_X
 ClientSampleId :
 E27N2

Integration Parameters: LSCINT.P

Integrator: RTE
 Smoothing : OFF
 Sampling : 1
 Start Thrs: 0.2
 Stop Thrs : 0

Filtering: 5
 Min Area: 0 % of largest Peak
 Max Peaks: 100
 Peak Location: TOP

If leading or trailing edge < 100 prefer < Baseline drop else tangent >
 Peak separation: 5

Method : Z:\voasrv\HPCHEM1\MSVOA_X\Method\SFAMXLM110424WMA.M
 Title : VOC Analysis

Signal : TIC: VX043797.D\data.ms

peak #	R.T. min	first scan	max scan	last scan	PK TY	peak height	corr. area	corr. % max.	% of total
1	1.240	22	25	34	rBV	26698	32992	5.94%	0.770%
2	1.368	43	46	53	rBV	50019	57604	10.37%	1.344%
3	1.648	89	92	103	rVB	47218	69191	12.45%	1.614%
4	2.294	192	198	208	rBV	99531	157138	28.28%	3.665%
5	2.508	232	233	236	rVB2	355	344	0.06%	0.008%
6	2.623	250	252	256	rBV2	415	389	0.07%	0.009%
7	2.654	256	257	260	rVB2	374	325	0.06%	0.008%
8	2.782	276	278	280	rBV2	638	473	0.09%	0.011%
9	2.941	299	304	308	rBV4	1933	3320	0.60%	0.077%
10	3.111	330	332	334	rBV2	291	372	0.07%	0.009%
11	3.319	365	366	370	rBV3	269	307	0.06%	0.007%
12	3.392	376	378	379	rBV	293	285	0.05%	0.007%
13	3.434	379	385	395	rVB4	2738	6105	1.10%	0.142%
14	3.684	425	426	429	rBV	339	342	0.06%	0.008%
15	3.739	432	435	436	rBV2	392	301	0.05%	0.007%
16	3.898	459	461	466	rBV2	302	366	0.07%	0.009%
17	4.044	483	485	486	rBV	427	274	0.05%	0.006%
18	4.221	512	514	517	rBV2	295	279	0.05%	0.007%
19	4.324	528	531	535	rVB2	318	421	0.08%	0.010%
20	4.385	540	541	544	rBV2	285	280	0.05%	0.007%
21	4.465	546	554	569	rBV2	34181	109576	19.72%	2.556%
22	4.757	598	602	603	rBV3	565	684	0.12%	0.016%
23	4.824	611	613	616	rBV2	303	296	0.05%	0.007%
24	4.916	625	628	632	rBV2	489	837	0.15%	0.020%
25	4.952	632	634	637	rVB3	394	383	0.07%	0.009%
26	5.050	638	650	666	rVV	72742	221920	39.94%	5.177%
27	5.208	675	676	678	rBV	314	251	0.05%	0.006%
28	5.379	701	704	705	rBV2	281	281	0.05%	0.007%
29	5.544	729	731	732	rBV2	369	279	0.05%	0.007%
30	5.818	775	776	778	rBV	302	259	0.05%	0.006%
31	5.964	788	800	816	rBV2	185231	555631	100.00%	12.961%
32	6.257	847	848	850	rBV2	483	313	0.06%	0.007%
33	6.507	887	889	892	rBV2	227	270	0.05%	0.006%
34	6.531	892	893	898	rVB2	352	438	0.08%	0.010%
35	6.568	898	899	902	rBV	270	285	0.05%	0.007%
36	6.611	904	906	909	rVB	454	375	0.07%	0.009%

Data Path : Z:\voasrv\HPCHEM1\MSVOA_X\Data\VX111124\
 Data File : VX043797.D
 Acq On : 11 Nov 2024 17:13
 Operator : JC/MD
 Sample : P4786-10
 Misc : 5.0mL/MSVOA_X/WATER
 ALS Vial : 22 Sample Multiplier: 1

Instrument :
 MSVOA_X
 ClientSampleId :
 E27N2

Integration Parameters: LSCINT.P

Integrator: RTE
 Smoothing : OFF
 Sampling : 1
 Start Thrs: 0.2
 Stop Thrs : 0

Filtering: 5
 Min Area: 0 % of largest Peak
 Max Peaks: 100
 Peak Location: TOP

If leading or trailing edge < 100 prefer < Baseline drop else tangent >
 Peak separation: 5

Method : Z:\voasrv\HPCHEM1\MSVOA_X\Method\SFAMXLM110424WMA.M
 Title : VOC Analysis

37	6.757	922	930	946	rBV	142713	352549	63.45%	8.224%
38	7.129	984	991	1002	rBV6	9394	21489	3.87%	0.501%
39	7.220	1005	1006	1009	rBV2	430	395	0.07%	0.009%
40	7.306	1012	1020	1033	rBV	114504	255976	46.07%	5.971%
41	7.470	1045	1047	1049	rBV	670	501	0.09%	0.012%
42	7.635	1071	1074	1077	rVV2	251	341	0.06%	0.008%
43	7.781	1096	1098	1101	rVV2	287	312	0.06%	0.007%
44	7.818	1101	1104	1107	rVB2	383	500	0.09%	0.012%
45	7.854	1107	1110	1112	rBV2	334	326	0.06%	0.008%
46	7.897	1114	1117	1119	rBV	481	368	0.07%	0.009%
47	8.001	1132	1134	1136	rVB3	465	363	0.07%	0.008%
48	8.123	1151	1154	1155	rBV	224	291	0.05%	0.007%
49	8.196	1164	1166	1168	rBV2	546	440	0.08%	0.010%
50	8.324	1180	1187	1199	rBV	68203	119164	21.45%	2.780%
51	8.476	1210	1212	1214	rVB	420	272	0.05%	0.006%
52	8.561	1224	1226	1228	rVB2	346	298	0.05%	0.007%
53	8.586	1228	1230	1233	rBV3	335	442	0.08%	0.010%
54	8.647	1234	1240	1255	rBV	268684	441140	79.39%	10.290%
55	8.824	1268	1269	1274	rVB3	377	452	0.08%	0.011%
56	8.952	1284	1290	1301	rBV	46130	74631	13.43%	1.741%
57	9.281	1338	1344	1350	rBV3	1871	3926	0.71%	0.092%
58	9.330	1350	1352	1354	rBV2	337	295	0.05%	0.007%
59	9.384	1356	1361	1377	rBV	164616	260155	46.82%	6.068%
60	9.537	1384	1386	1388	rBV3	673	370	0.07%	0.009%
61	9.647	1402	1404	1405	rVB	571	353	0.06%	0.008%
62	9.884	1440	1443	1446	rBV	280	347	0.06%	0.008%
63	10.055	1465	1471	1479	rBV	309071	438189	78.86%	10.221%
64	10.500	1543	1544	1547	rBV	346	339	0.06%	0.008%
65	10.567	1551	1555	1557	rBV2	271	395	0.07%	0.009%
66	10.622	1560	1564	1568	rBV2	418	658	0.12%	0.015%
67	10.878	1603	1606	1607	rBV2	253	282	0.05%	0.007%
68	10.963	1618	1620	1621	rBV	350	249	0.04%	0.006%
69	11.128	1644	1647	1649	rBV2	198	266	0.05%	0.006%
70	11.189	1652	1657	1667	rBV	221586	292540	52.65%	6.824%
71	11.317	1674	1678	1682	rVB3	2345	3178	0.57%	0.074%
72	11.354	1682	1684	1687	rVV2	382	365	0.07%	0.009%
73	11.476	1701	1704	1705	rBV2	364	350	0.06%	0.008%
74	11.506	1708	1709	1711	rBV	398	295	0.05%	0.007%
75	11.530	1711	1713	1716	rBV2	307	357	0.06%	0.008%
76	11.573	1716	1720	1722	rVV2	522	482	0.09%	0.011%

Data Path : Z:\voasrv\HPCHEM1\MSVOA_X\Data\VX111124\
 Data File : VX043797.D
 Acq On : 11 Nov 2024 17:13
 Operator : JC/MD
 Sample : P4786-10
 Misc : 5.0mL/MSVOA_X/WATER
 ALS Vial : 22 Sample Multiplier: 1

Instrument :
 MSVOA_X
 ClientSampleId :
 E27N2

Integration Parameters: LSCINT.P

Integrator: RTE
 Smoothing : OFF
 Sampling : 1
 Start Thrs: 0.2
 Stop Thrs : 0

Filtering: 5
 Min Area: 0 % of largest Peak
 Max Peaks: 100
 Peak Location: TOP

If leading or trailing edge < 100 prefer < Baseline drop else tangent >
 Peak separation: 5

Method : Z:\voasrv\HPCHEM1\MSVOA_X\Method\SFAMXLM110424WMA.M
 Title : VOC Analysis

77	11.683	1736	1738	1740	rVB	323	278	0.05%	0.006%
78	11.780	1753	1754	1756	rBV	329	251	0.05%	0.006%
79	11.835	1760	1763	1765	rBV2	350	444	0.08%	0.010%
80	12.018	1788	1793	1803	rBV	285185	382783	68.89%	8.929%
81	12.317	1837	1842	1858	rBV	312167	397818	71.60%	9.280%
82	12.488	1868	1870	1876	rBV2	328	360	0.06%	0.008%
83	12.762	1908	1915	1919	rBV3	700	1439	0.26%	0.034%
84	12.805	1919	1922	1928	rBV3	373	702	0.13%	0.016%
85	13.219	1988	1990	1993	rVB	351	362	0.07%	0.008%
86	13.359	2010	2013	2014	rBV	328	266	0.05%	0.006%
87	13.469	2029	2031	2035	rVB3	383	431	0.08%	0.010%
88	13.536	2040	2042	2045	rBV2	564	511	0.09%	0.012%
89	13.756	2076	2078	2080	rVB	337	279	0.05%	0.007%
90	13.804	2083	2086	2087	rBV	324	352	0.06%	0.008%
91	13.896	2098	2101	2102	rBV	405	321	0.06%	0.007%
92	14.359	2175	2177	2184	rVB2	508	644	0.12%	0.015%
93	14.518	2201	2203	2205	rBV	310	302	0.05%	0.007%
94	14.597	2213	2216	2217	rBV2	313	303	0.05%	0.007%
95	14.859	2257	2259	2260	rVB	693	356	0.06%	0.008%
96	15.109	2298	2300	2301	rBV	452	313	0.06%	0.007%
97	15.316	2333	2334	2335	rBV	634	261	0.05%	0.006%
98	15.463	2357	2358	2360	rBV2	456	271	0.05%	0.006%
99	16.145	2468	2470	2472	rBV2	571	399	0.07%	0.009%
100	16.469	2521	2523	2529	rBV2	837	739	0.13%	0.017%

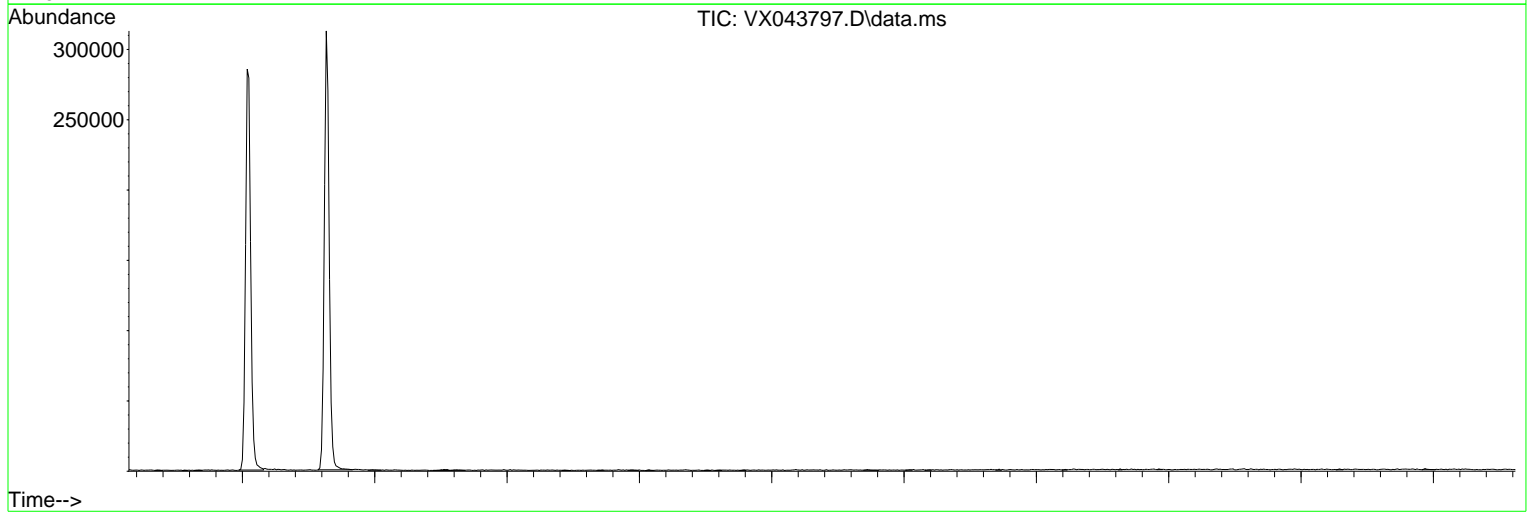
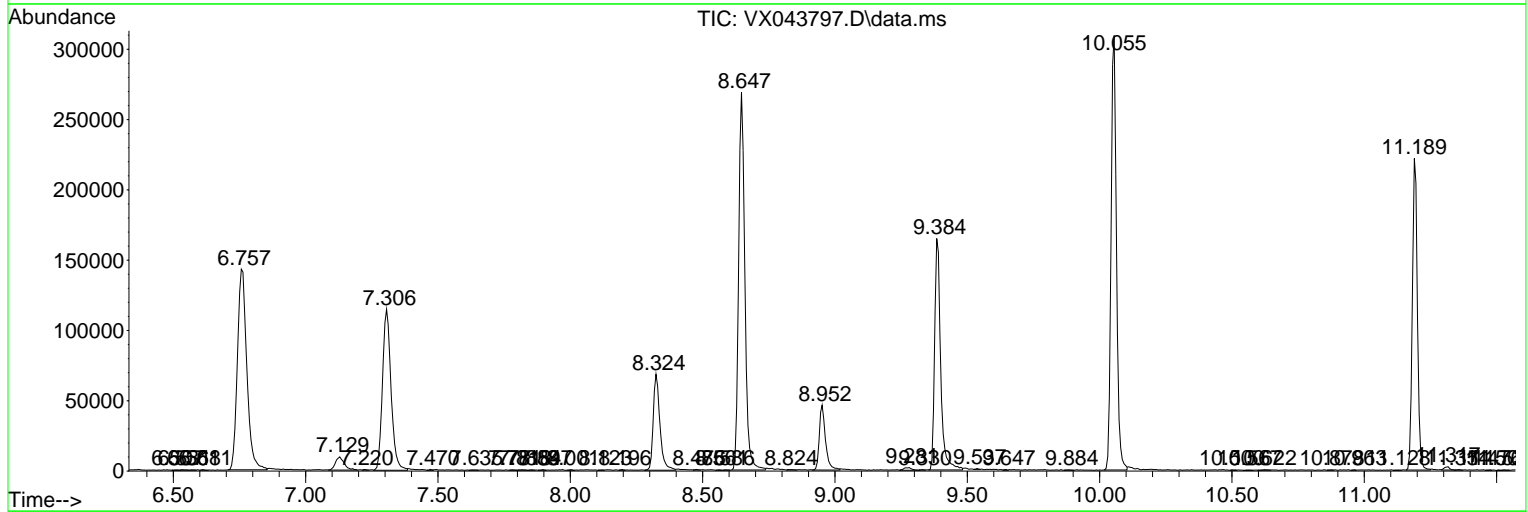
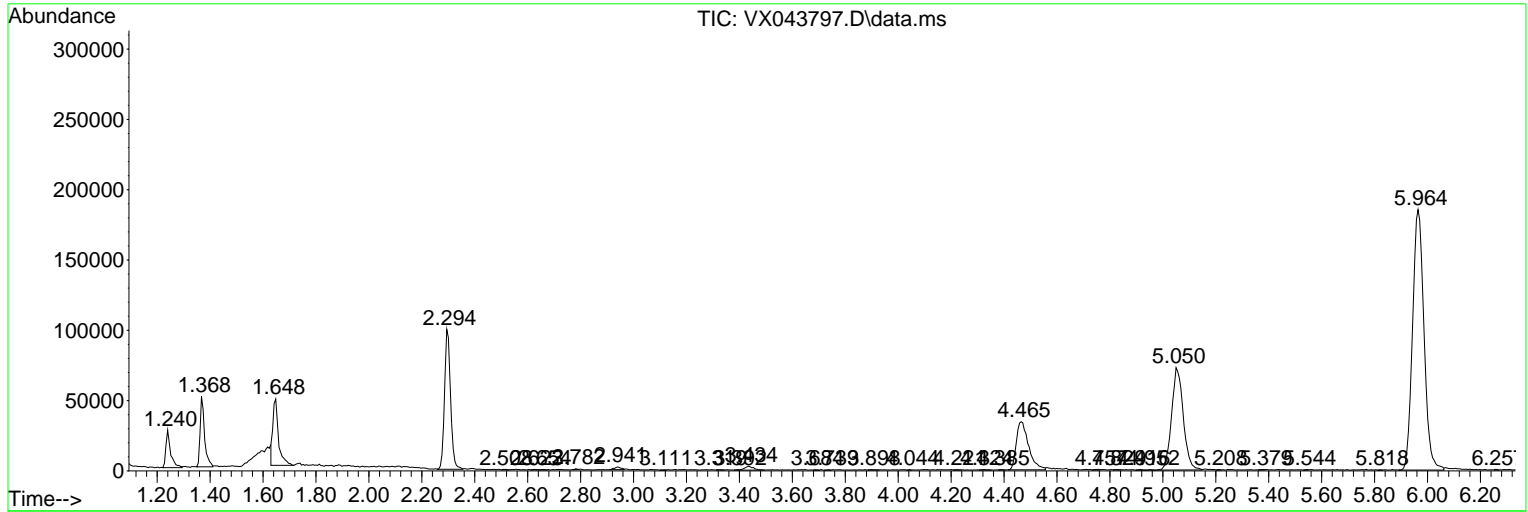
Sum of corrected areas: 4287012

Data Path : Z:\voasrv\HPCHEM1\MSVOA_X\Data\VX111124\
 Data File : VX043797.D
 Acq On : 11 Nov 2024 17:13
 Operator : JC/MD
 Sample : P4786-10
 Misc : 5.0mL/MSVOA_X/WATER
 ALS Vial : 22 Sample Multiplier: 1

Instrument :
 MSVOA_X
 ClientSampleId :
 E27N2

Quant Method : Z:\voasrv\HPCHEM1\MSVOA_X\Method\SFAMXLM110424WMA.M
 Quant Title : VOC Analysis

TIC Library : C:\Database\NIST20.L
 TIC Integration Parameters: LSCINT.P



Library Search Compound Report

Data Path : Z:\voasrv\HPCHEM1\MSVOA_X\Data\VX111124\
Data File : VX043797.D
Acq On : 11 Nov 2024 17:13
Operator : JC/MD
Sample : P4786-10
Misc : 5.0mL/MSVOA_X/WATER
ALS Vial : 22 Sample Multiplier: 1

Instrument :
MSVOA_X
ClientSampleId :
E27N2

Quant Method : Z:\voasrv\HPCHEM1\MSVOA_X\Method\SFAMXLM110424WMA.M
Quant Title : VOC Analysis

TIC Library : C:\Database\NIST20.L
TIC Integration Parameters: LSCINT.P

No Library Search Compounds Detected

Data Path : Z:\voasrv\HPCHEM1\MSVOA_X\Data\VX111124\
Data File : VX043797.D
Acq On : 11 Nov 2024 17:13
Operator : JC/MD
Sample : P4786-10
Misc : 5.0mL/MSVOA_X/WATER
ALS Vial : 22 Sample Multiplier: 1

Instrument :
MSVOA_X
ClientSampleId :
E27N2

Quant Method : Z:\voasrv\HPCHEM1\MSVOA_X\Method\SFAMXLM110424WMA.M
Quant Title : VOC Analysis

TIC Library : C:\Database\NIST20.L
TIC Integration Parameters: LSCINT.P

TIC Top Hit name	RT	EstConc	Units	Response	#	RT	Resp	Conc
------------------	----	---------	-------	----------	---	----	------	------

-----|