

Data Path : Z:\voasrv\HPCHEM1\MSVOA_X\Data\VX111125\
 Data File : VX048554.D
 Acq On : 11 Nov 2025 11:23
 Operator : JC/MD
 Sample : IBLK
 Misc : 5.0mL/MSVOA_X/WATER
 ALS Vial : 7 Sample Multiplier: 1

Instrument :
 MSVOA_X
 ClientSampleId :
 IBLK

Quant Time: Nov 12 04:43:40 2025
 Quant Method : Z:\voasrv\HPCHEM1\MSVOA_X\Method\82X110725W.M
 Quant Title : SW846 8260
 QLast Update : Sat Nov 08 05:08:11 2025
 Response via : Initial Calibration

Compound	R.T.	QIon	Response	Conc	Units	Dev(Min)

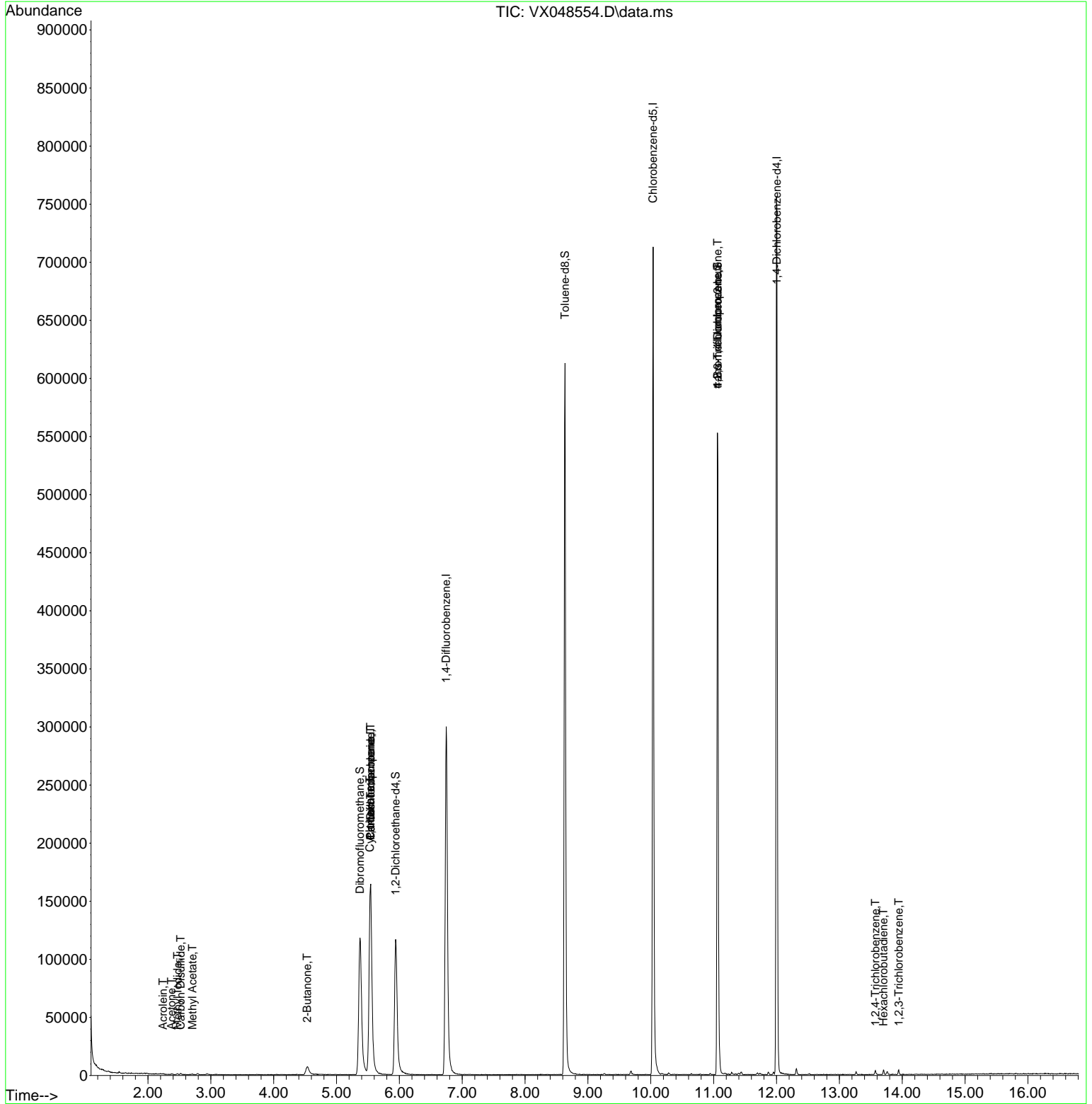
Internal Standards						
1) Pentafluorobenzene	5.544	168	179891	50.000	ug/l	0.00
34) 1,4-Difluorobenzene	6.745	114	346715	50.000	ug/l	0.00
63) Chlorobenzene-d5	10.037	117	347881	50.000	ug/l	0.00
72) 1,4-Dichlorobenzene-d4	12.006	152	179998	50.000	ug/l	0.00
System Monitoring Compounds						
33) 1,2-Dichloroethane-d4	5.940	65	127433	50.838	ug/l	0.00
Spiked Amount	50.000	Range 78 - 117	Recovery	=	101.680%	
35) Dibromofluoromethane	5.373	113	120163	45.791	ug/l	0.00
Spiked Amount	50.000	Range 75 - 124	Recovery	=	91.580%	
50) Toluene-d8	8.635	98	394091	48.152	ug/l	0.00
Spiked Amount	50.000	Range 92 - 112	Recovery	=	96.300%	
62) 4-Bromofluorobenzene	11.061	95	163772	53.695	ug/l	0.00
Spiked Amount	50.000	Range 83 - 123	Recovery	=	107.400%	
Target Compounds						
						Qvalue
10) Methyl Iodide	2.471	142	774	0.261	ug/l #	80
13) Acrolein	2.239	56	158	2.299	ug/l #	72
16) Acetone	2.373	43	363	0.306	ug/l	97
17) Carbon Disulfide	2.520	76	1427	0.242	ug/l #	86
18) Methyl Acetate	2.709	43	879	0.270	ug/l #	58
25) 2-Butanone	4.532	43	450	0.256	ug/l #	48
31) Cyclohexane	5.531	56	3444	1.023	ug/l #	1
36) 1,1-Dichloropropene	5.544	75	13568	3.861	ug/l #	49
38) Carbon Tetrachloride	5.544	117	17326	4.332	ug/l #	19
76) 1,2,3-Trichloropropane	11.061	75	81454	18.784	ug/l #	30
81) trans-1,4-Dichloro-2-b...	11.061	75	81454	53.727	ug/l #	12
93) 1,2,4-Trichlorobenzene	13.573	180	1147	0.284	ug/l	99
94) Hexachlorobutadiene	13.701	225	782	0.464	ug/l	88
96) 1,2,3-Trichlorobenzene	13.945	180	1107	0.295	ug/l	91

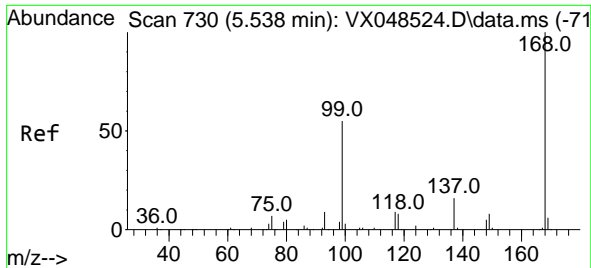
(#) = qualifier out of range (m) = manual integration (+) = signals summed

Data Path : Z:\voasrv\HPCHEM1\MSVOA_X\Data\VX111125\
 Data File : VX048554.D
 Acq On : 11 Nov 2025 11:23
 Operator : JC/MD
 Sample : IBLK
 Misc : 5.0mL/MSVOA_X/WATER
 ALS Vial : 7 Sample Multiplier: 1

Instrument :
 MSVOA_X
ClientSampleId :
 IBLK

Quant Time: Nov 12 04:43:40 2025
 Quant Method : Z:\voasrv\HPCHEM1\MSVOA_X\Method\82X110725W.M
 Quant Title : SW846 8260
 QLast Update : Sat Nov 08 05:08:11 2025
 Response via : Initial Calibration

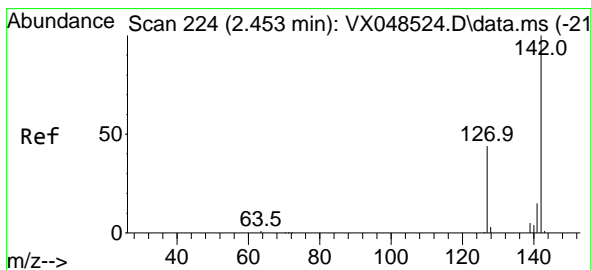
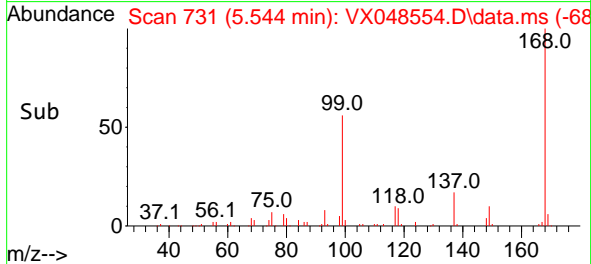
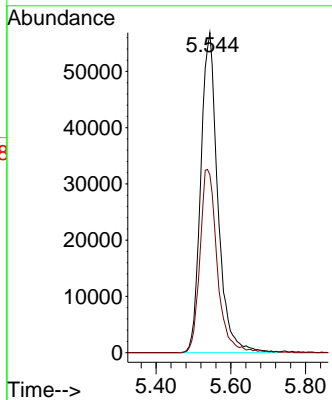
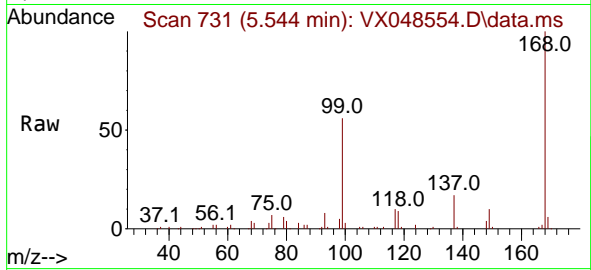




#1
 Pentafluorobenzene
 Concen: 50.000 ug/l
 RT: 5.544 min Scan# 71
 Delta R.T. 0.006 min
 Lab File: VX048554.D
 Acq: 11 Nov 2025 11:23

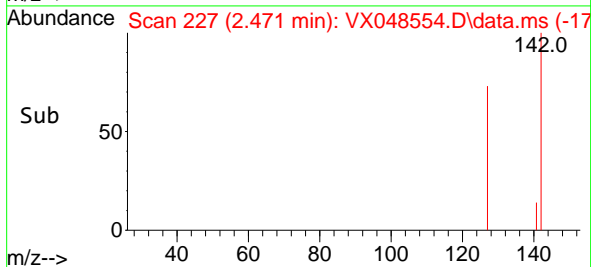
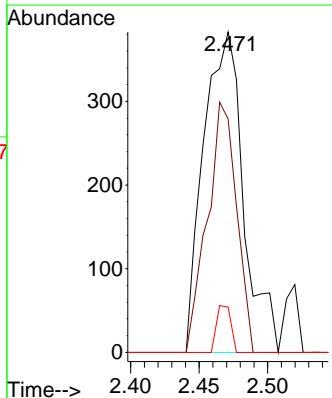
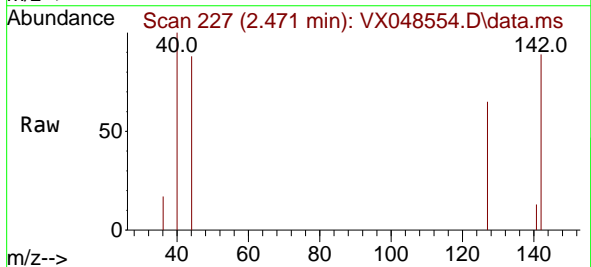
Instrument :
 MSVOA_X
 ClientSampleId :
 IBLK

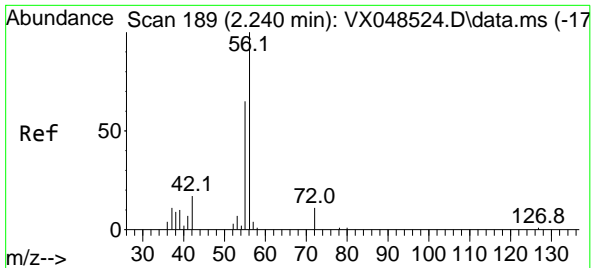
Tgt Ion:168 Resp: 179891
 Ion Ratio Lower Upper
 168 100
 99 55.6 45.2 67.8



#10
 Methyl Iodide
 Concen: 0.261 ug/l
 RT: 2.471 min Scan# 227
 Delta R.T. 0.018 min
 Lab File: VX048554.D
 Acq: 11 Nov 2025 11:23

Tgt Ion:142 Resp: 774
 Ion Ratio Lower Upper
 142 100
 127 57.5 35.8 53.6#
 141 5.2 11.4 17.0#

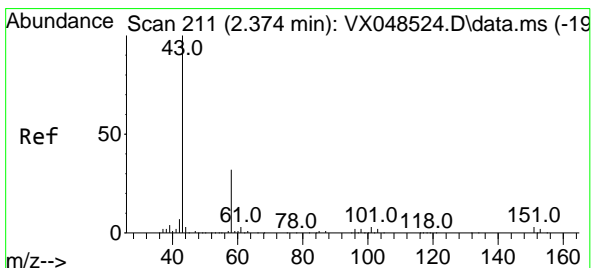
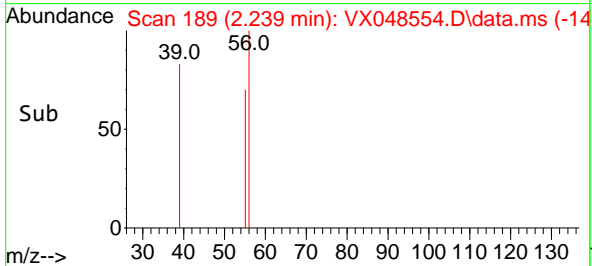
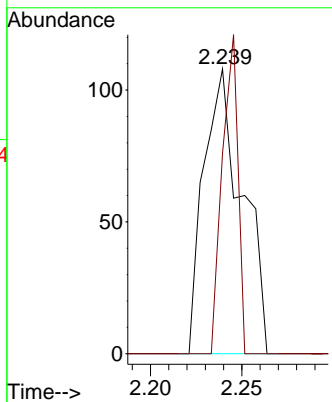
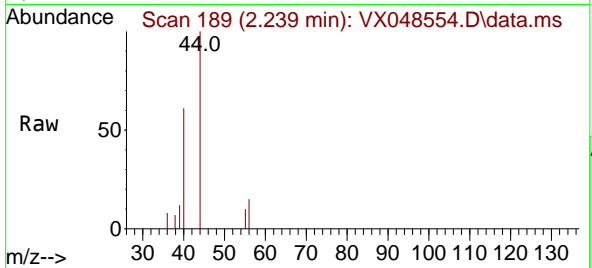




#13
 Acrolein
 Concen: 2.299 ug/l
 RT: 2.239 min Scan# 118
 Delta R.T. -0.000 min
 Lab File: VX048554.D
 Acq: 11 Nov 2025 11:23

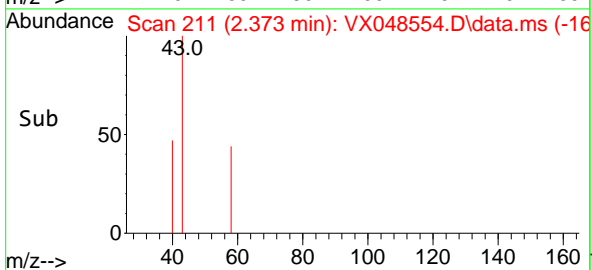
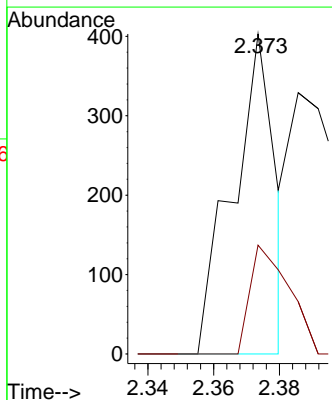
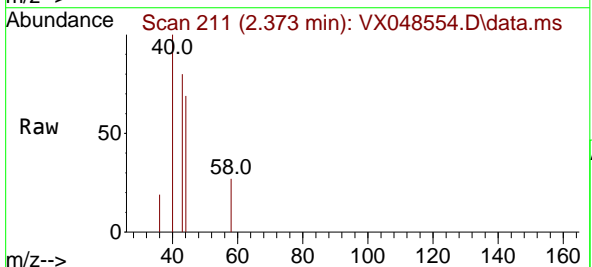
Instrument : MSVOA_X
 ClientSampleId : IBLK

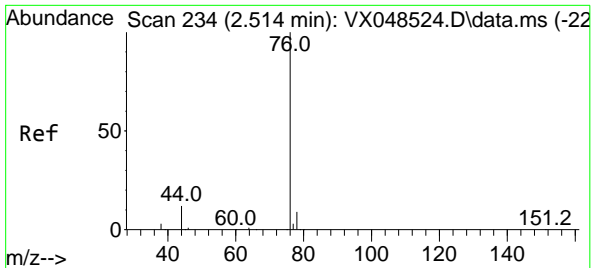
Tgt Ion: 56 Resp: 158
 Ion Ratio Lower Upper
 56 100
 55 45.6 54.9 82.3#



#16
 Acetone
 Concen: 0.306 ug/l
 RT: 2.373 min Scan# 211
 Delta R.T. -0.000 min
 Lab File: VX048554.D
 Acq: 11 Nov 2025 11:23

Tgt Ion: 43 Resp: 363
 Ion Ratio Lower Upper
 43 100
 58 34.0 25.8 38.6

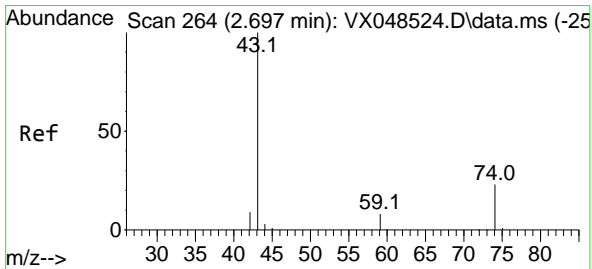
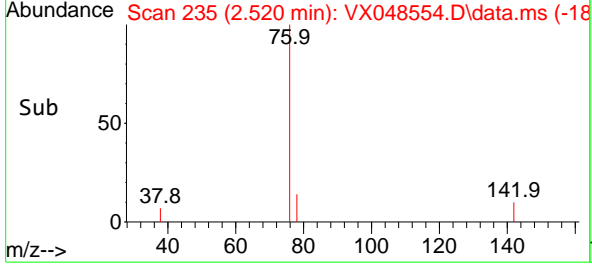
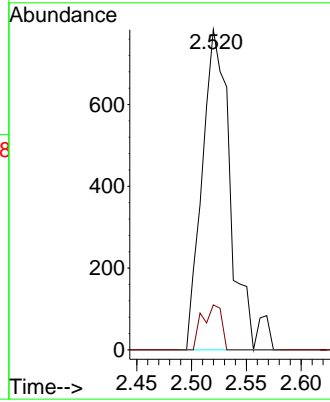
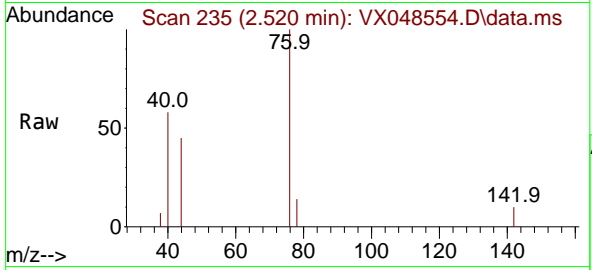




#17
 Carbon Disulfide
 Concen: 0.242 ug/l
 RT: 2.520 min Scan# 21
 Delta R.T. 0.006 min
 Lab File: VX048554.D
 Acq: 11 Nov 2025 11:23

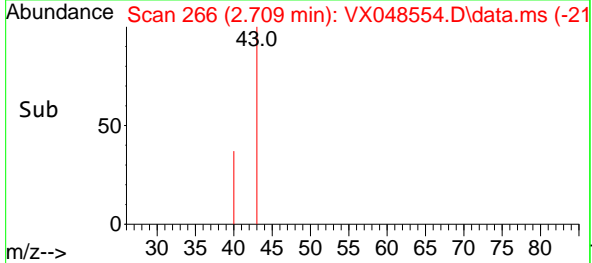
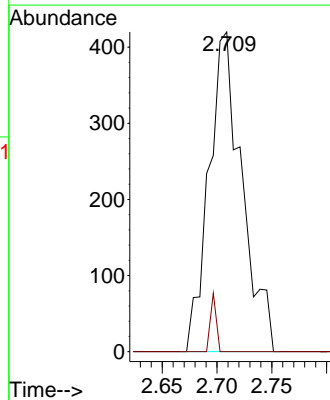
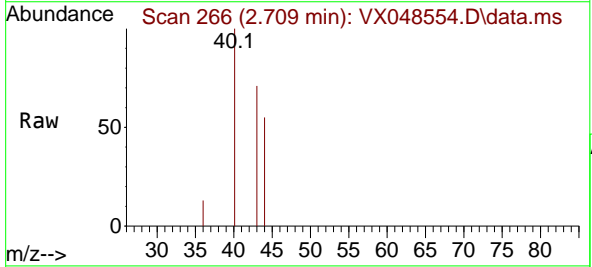
Instrument :
 MSVOA_X
 ClientSampleId :
 IBLK

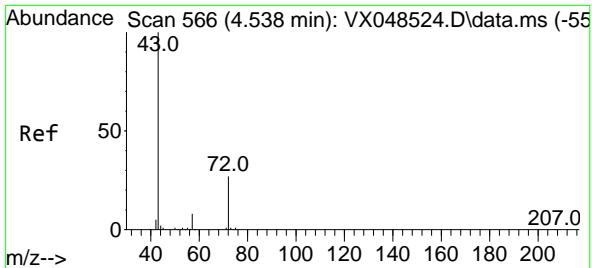
Tgt Ion: 76 Resp: 1427
 Ion Ratio Lower Upper
 76 100
 78 14.0 7.1 10.7#



#18
 Methyl Acetate
 Concen: 0.270 ug/l
 RT: 2.709 min Scan# 266
 Delta R.T. 0.012 min
 Lab File: VX048554.D
 Acq: 11 Nov 2025 11:23

Tgt Ion: 43 Resp: 879
 Ion Ratio Lower Upper
 43 100
 74 3.2 19.1 28.7#

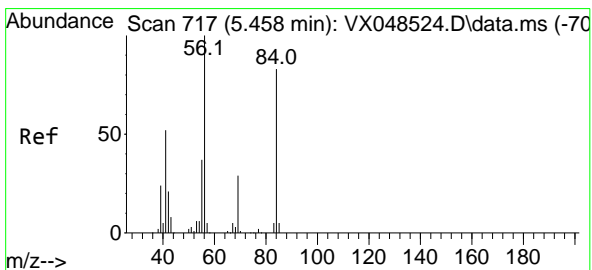
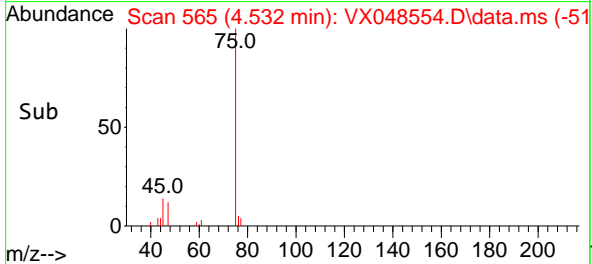
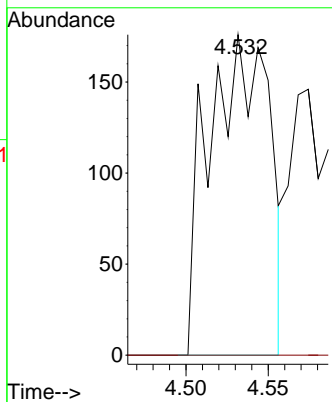
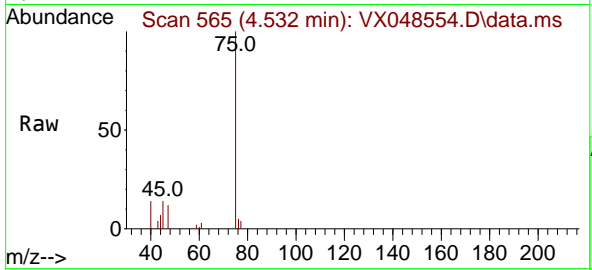




#25
 2-Butanone
 Concen: 0.256 ug/l
 RT: 4.532 min Scan# 50
 Delta R.T. -0.006 min
 Lab File: VX048554.D
 Acq: 11 Nov 2025 11:23

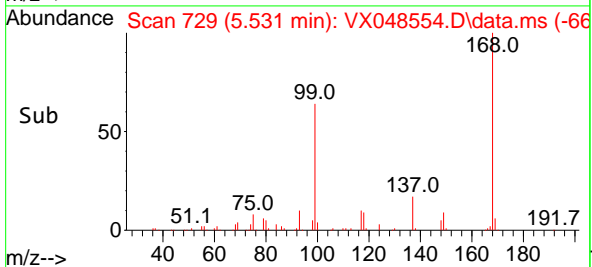
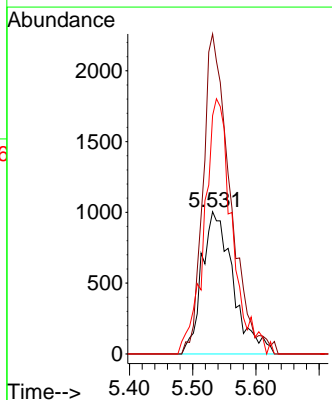
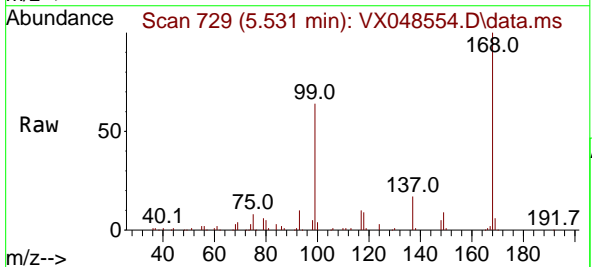
Instrument : MSVOA_X
 ClientSampleId : IBLK

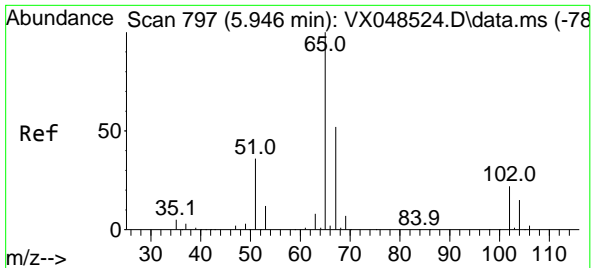
Tgt Ion: 43 Resp: 450
 Ion Ratio Lower Upper
 43 100
 72 0.0 21.5 32.3#



#31
 Cyclohexane
 Concen: 1.023 ug/l
 RT: 5.531 min Scan# 729
 Delta R.T. 0.073 min
 Lab File: VX048554.D
 Acq: 11 Nov 2025 11:23

Tgt Ion: 56 Resp: 3444
 Ion Ratio Lower Upper
 56 100
 69 224.9 23.4 35.2#
 84 167.6 66.3 99.5#

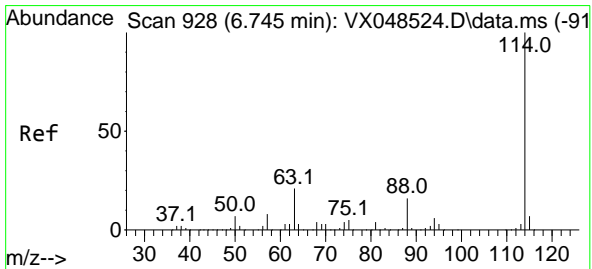
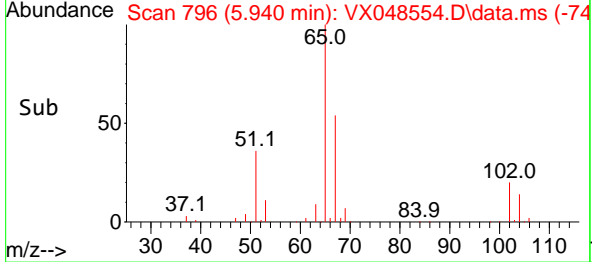
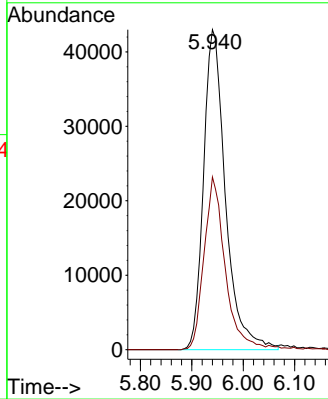
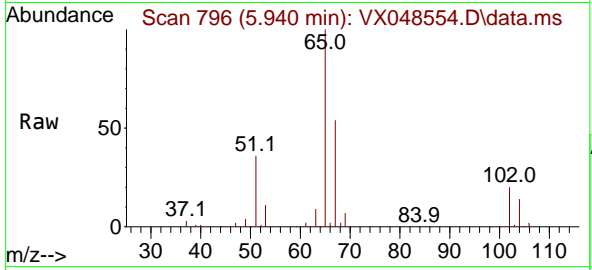




#33
 1,2-Dichloroethane-d4
 Concen: 50.838 ug/l
 RT: 5.940 min Scan# 797
 Delta R.T. -0.006 min
 Lab File: VX048554.D
 Acq: 11 Nov 2025 11:23

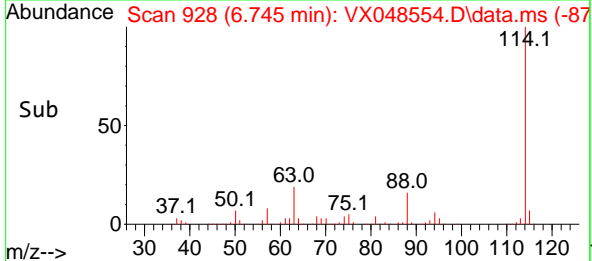
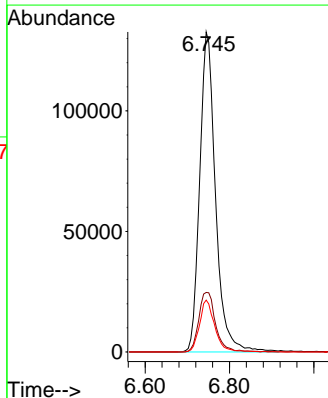
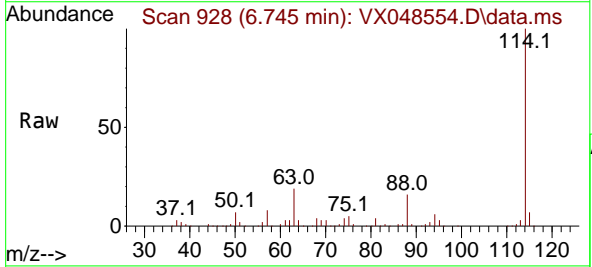
Instrument : MSVOA_X
 ClientSampleId : IBLK

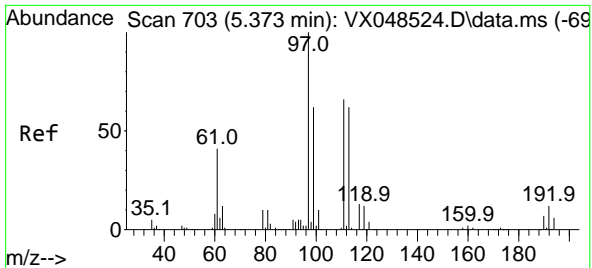
Tgt Ion: 65 Resp: 127433
 Ion Ratio Lower Upper
 65 100
 67 51.5 0.0 106.2



#34
 1,4-Difluorobenzene
 Concen: 50.000 ug/l
 RT: 6.745 min Scan# 928
 Delta R.T. -0.000 min
 Lab File: VX048554.D
 Acq: 11 Nov 2025 11:23

Tgt Ion: 114 Resp: 346715
 Ion Ratio Lower Upper
 114 100
 63 18.6 0.0 41.2
 88 16.2 0.0 32.2

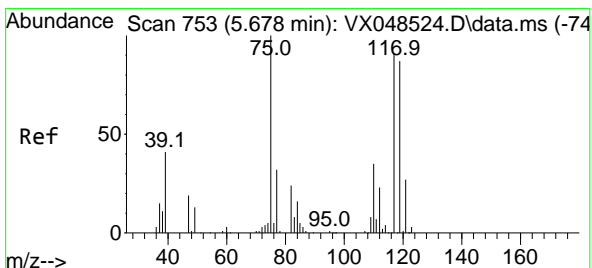
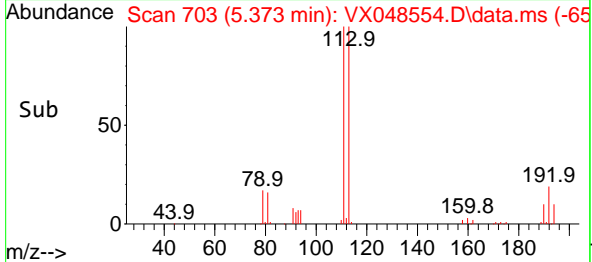
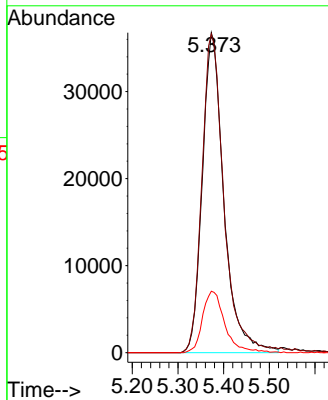
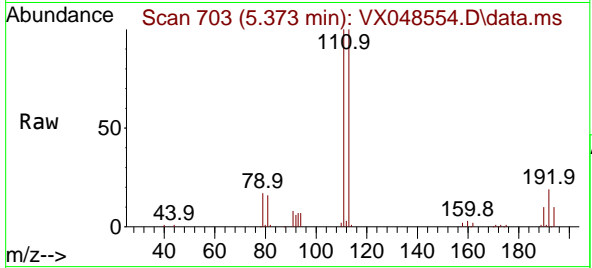




#35
 Dibromofluoromethane
 Concen: 45.791 ug/l
 RT: 5.373 min Scan# 703
 Delta R.T. -0.000 min
 Lab File: VX048554.D
 Acq: 11 Nov 2025 11:23

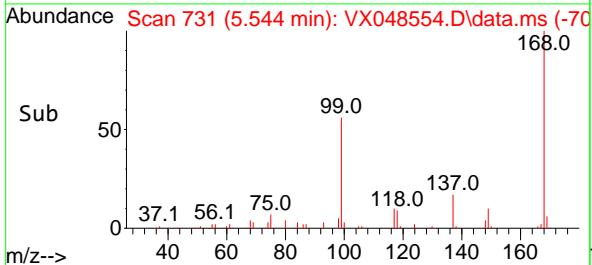
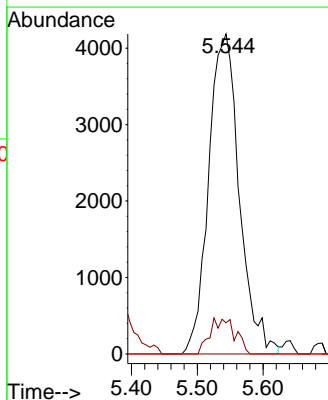
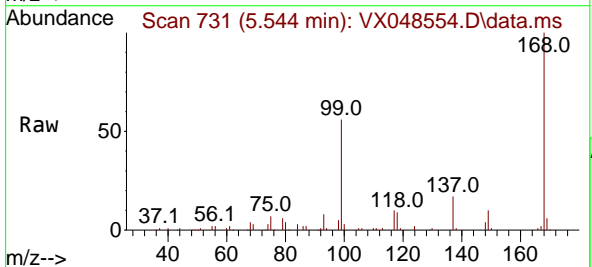
Instrument : MSVOA_X
 ClientSampleId : IBLK

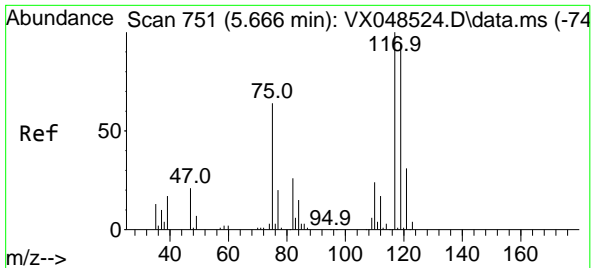
Tgt Ion	Resp	Lower	Upper
113	120163		
113	100		
111	102.3	81.9	122.9
192	19.9	15.8	23.6



#36
 1,1-Dichloropropene
 Concen: 3.861 ug/l
 RT: 5.544 min Scan# 731
 Delta R.T. -0.134 min
 Lab File: VX048554.D
 Acq: 11 Nov 2025 11:23

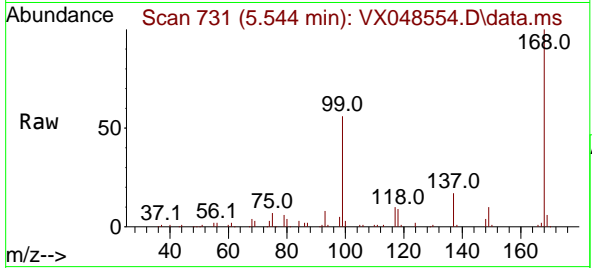
Tgt Ion	Resp	Lower	Upper
75	13568		
75	100		
110	9.2	18.4	55.4#
77	0.0	24.6	37.0#



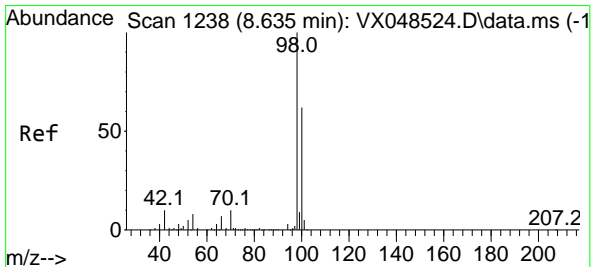
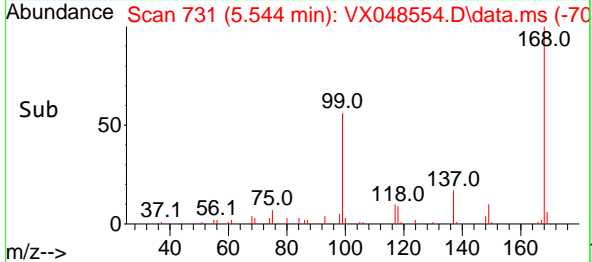
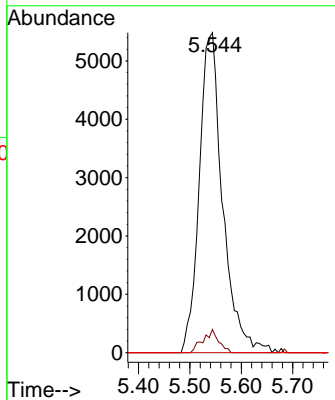


#38
 Carbon Tetrachloride
 Concen: 4.332 ug/l
 RT: 5.544 min Scan# 71
 Delta R.T. -0.122 min
 Lab File: VX048554.D
 Acq: 11 Nov 2025 11:23

Instrument :
 MSVOA_X
 ClientSampleId :
 IBLK

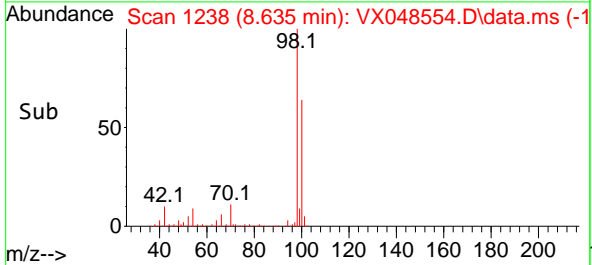
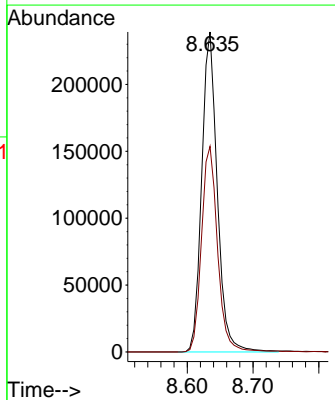
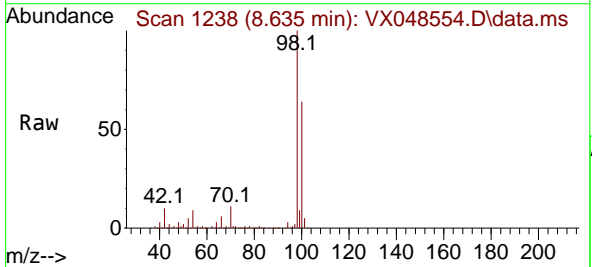


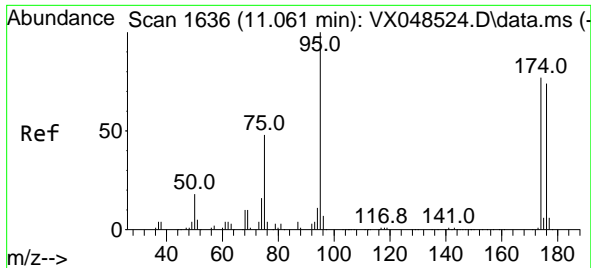
Tgt Ion:117 Resp: 17326
 Ion Ratio Lower Upper
 117 100
 119 7.2 74.5 111.7#
 121 0.0 24.8 37.2#



#50
 Toluene-d8
 Concen: 48.152 ug/l
 RT: 8.635 min Scan# 1238
 Delta R.T. -0.000 min
 Lab File: VX048554.D
 Acq: 11 Nov 2025 11:23

Tgt Ion: 98 Resp: 394091
 Ion Ratio Lower Upper
 98 100
 100 66.4 53.6 80.4



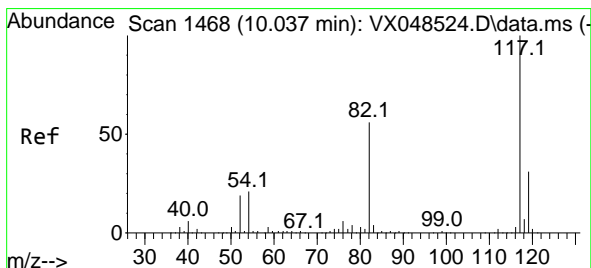
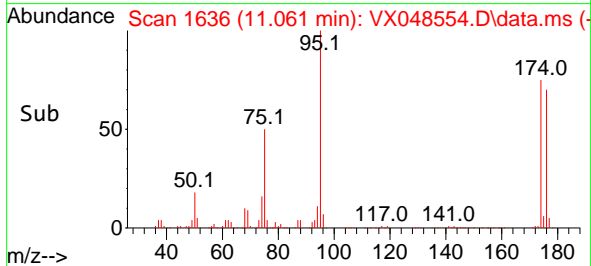
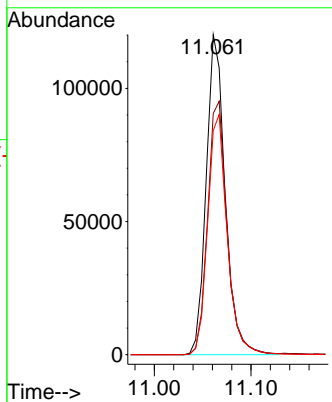
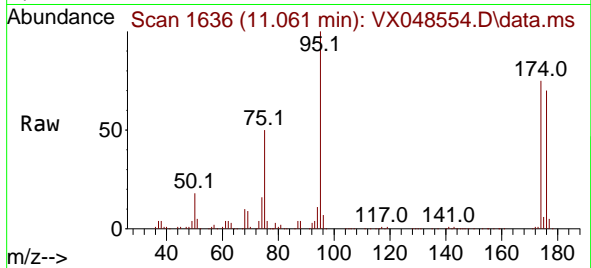


#62
 4-Bromofluorobenzene
 Concen: 53.695 ug/l
 RT: 11.061 min Scan# 1
 Delta R.T. -0.000 min
 Lab File: VX048554.D
 Acq: 11 Nov 2025 11:23

Instrument :
 MSVOA_X
 ClientSampleId :
 IBLK

Tgt Ion: 95 Resp: 163772

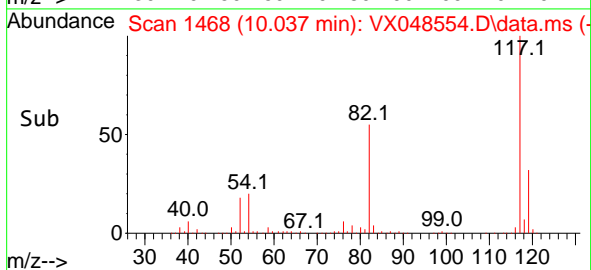
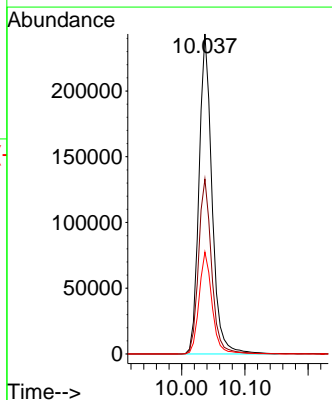
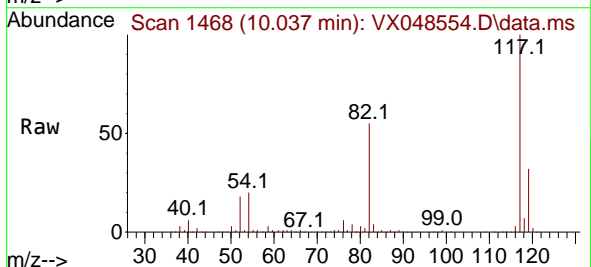
Ion	Ratio	Lower	Upper
95	100		
174	82.2	0.0	161.8
176	77.5	0.0	153.6

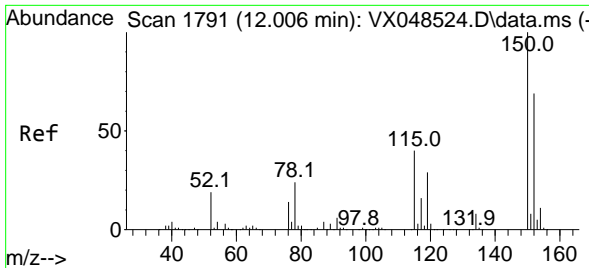


#63
 Chlorobenzene-d5
 Concen: 50.000 ug/l
 RT: 10.037 min Scan# 1468
 Delta R.T. -0.000 min
 Lab File: VX048554.D
 Acq: 11 Nov 2025 11:23

Tgt Ion: 117 Resp: 347881

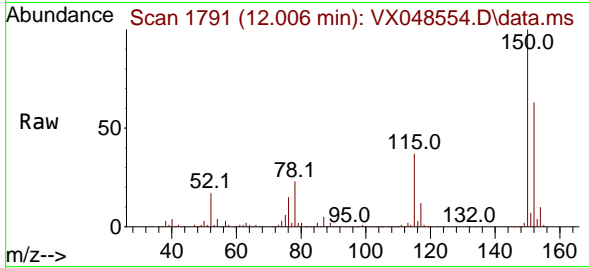
Ion	Ratio	Lower	Upper
117	100		
82	54.6	44.4	66.6
119	31.9	25.1	37.7



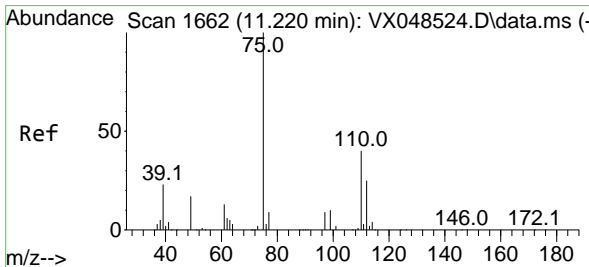
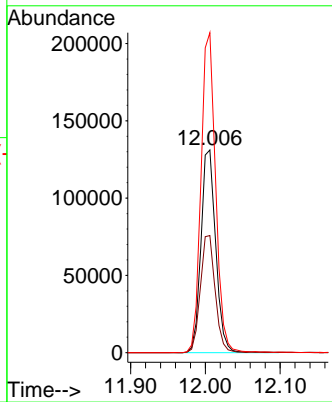
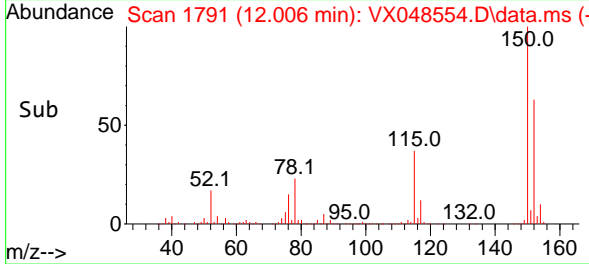


#72
 1,4-Dichlorobenzene-d4
 Concen: 50.000 ug/l
 RT: 12.006 min Scan# 1791
 Delta R.T. -0.000 min
 Lab File: VX048554.D
 Acq: 11 Nov 2025 11:23

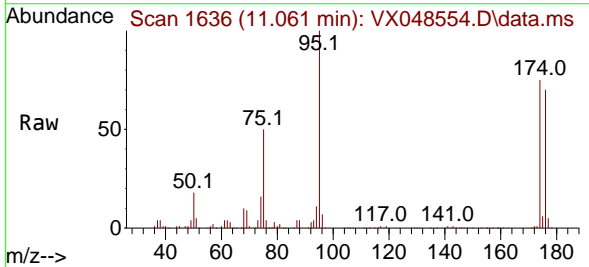
Instrument : MSVOA_X
 ClientSampleId : IBLK



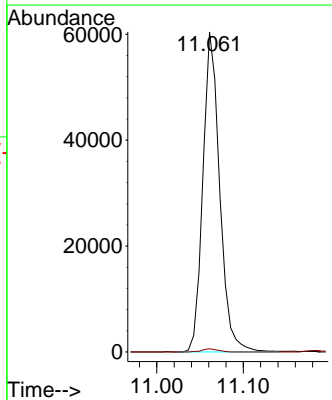
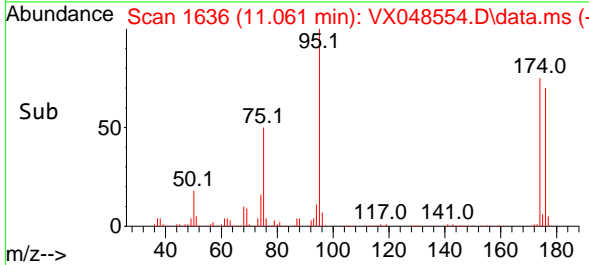
Tgt Ion:152 Resp: 179998
 Ion Ratio Lower Upper
 152 100
 115 57.9 39.2 117.6
 150 156.2 0.0 347.0

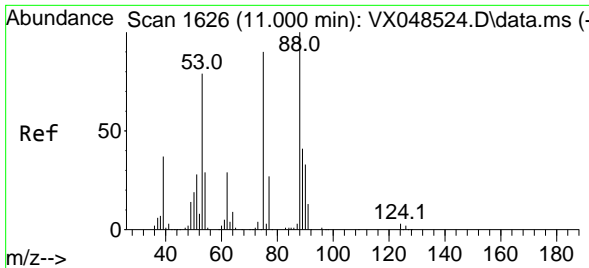


#76
 1,2,3-Trichloropropane
 Concen: 18.784 ug/l
 RT: 11.061 min Scan# 1636
 Delta R.T. -0.159 min
 Lab File: VX048554.D
 Acq: 11 Nov 2025 11:23



Tgt Ion: 75 Resp: 81454
 Ion Ratio Lower Upper
 75 100
 77 0.9 24.3 72.8#

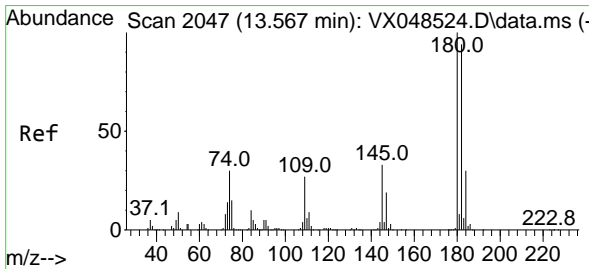
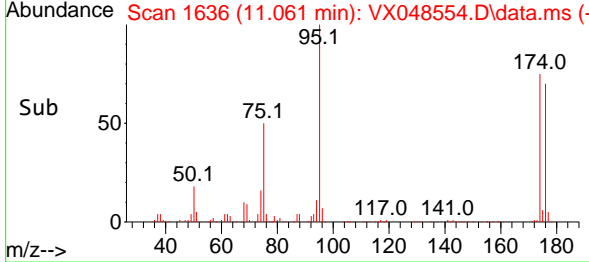
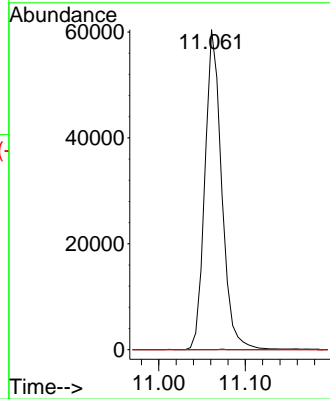
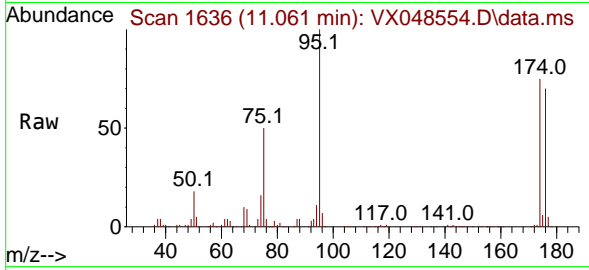




#81
 trans-1,4-Dichloro-2-butene
 Concen: 53.727 ug/l
 RT: 11.061 min Scan# 1
 Delta R.T. 0.061 min
 Lab File: VX048554.D
 Acq: 11 Nov 2025 11:23

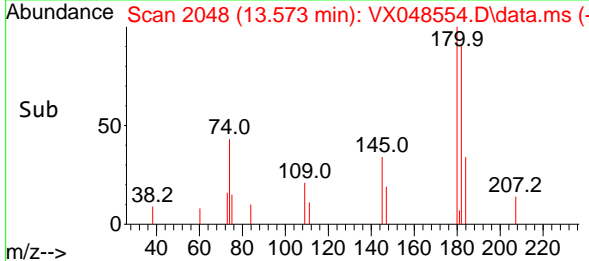
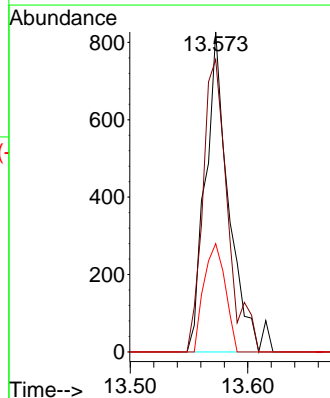
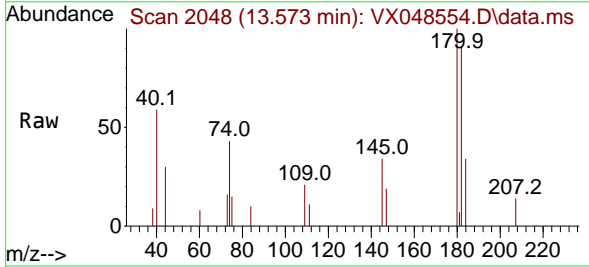
Instrument :
 MSVOA_X
 ClientSampleId :
 IBLK

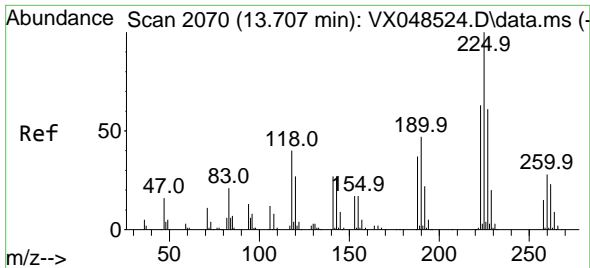
Tgt Ion: 75 Resp: 81454
 Ion Ratio Lower Upper
 75 100
 53 0.0 72.4 108.6#
 89 0.0 43.6 65.4#



#93
 1,2,4-Trichlorobenzene
 Concen: 0.284 ug/l
 RT: 13.573 min Scan# 2048
 Delta R.T. 0.006 min
 Lab File: VX048554.D
 Acq: 11 Nov 2025 11:23

Tgt Ion:180 Resp: 1147
 Ion Ratio Lower Upper
 180 100
 182 96.4 47.5 142.6
 145 30.9 15.9 47.7



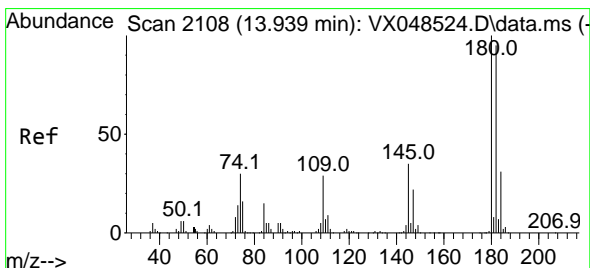
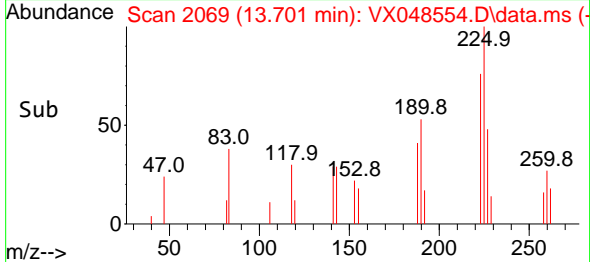
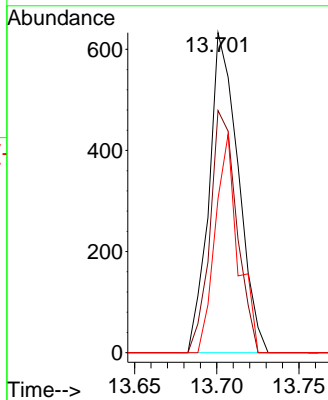
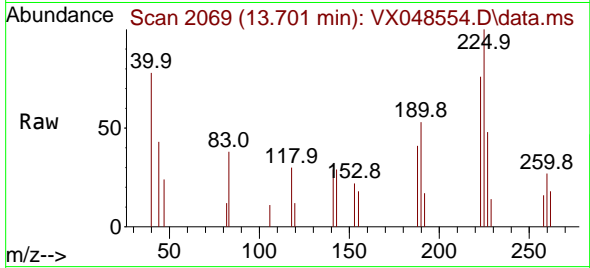


#94
 Hexachlorobutadiene
 Concen: 0.464 ug/l
 RT: 13.701 min Scan# 2070
 Delta R.T. -0.006 min
 Lab File: VX048554.D
 Acq: 11 Nov 2025 11:23

Instrument :
 MSVOA_X
 ClientSampleId :
 IBLK

Tgt Ion:225 Resp: 782

Ion	Ratio	Lower	Upper
225	100		
223	68.8	30.6	92.0
227	53.3	32.5	97.4



#96
 1,2,3-Trichlorobenzene
 Concen: 0.295 ug/l
 RT: 13.945 min Scan# 2109
 Delta R.T. 0.006 min
 Lab File: VX048554.D
 Acq: 11 Nov 2025 11:23

Tgt Ion:180 Resp: 1107

Ion	Ratio	Lower	Upper
180	100		
182	83.7	47.3	142.0
145	34.5	16.7	50.0

