

Data Path : Z:\voasrv\HPCHEM1\MSVOA_X\Data\VX111125\
 Data File : VX048556.D
 Acq On : 11 Nov 2025 12:04
 Operator : JC/MD
 Sample : Q3584-07 10X
 Misc : 5.0mL/MSVOA_X/WATER
 ALS Vial : 9 Sample Multiplier: 1

Instrument :
 MSVOA_X
 ClientSampleId :
 SEEP-1

Quant Time: Nov 12 04:44:24 2025
 Quant Method : Z:\voasrv\HPCHEM1\MSVOA_X\Method\82X110725W.M
 Quant Title : SW846 8260
 QLast Update : Sat Nov 08 05:08:11 2025
 Response via : Initial Calibration

Compound	R.T.	QIon	Response	Conc	Units	Dev(Min)

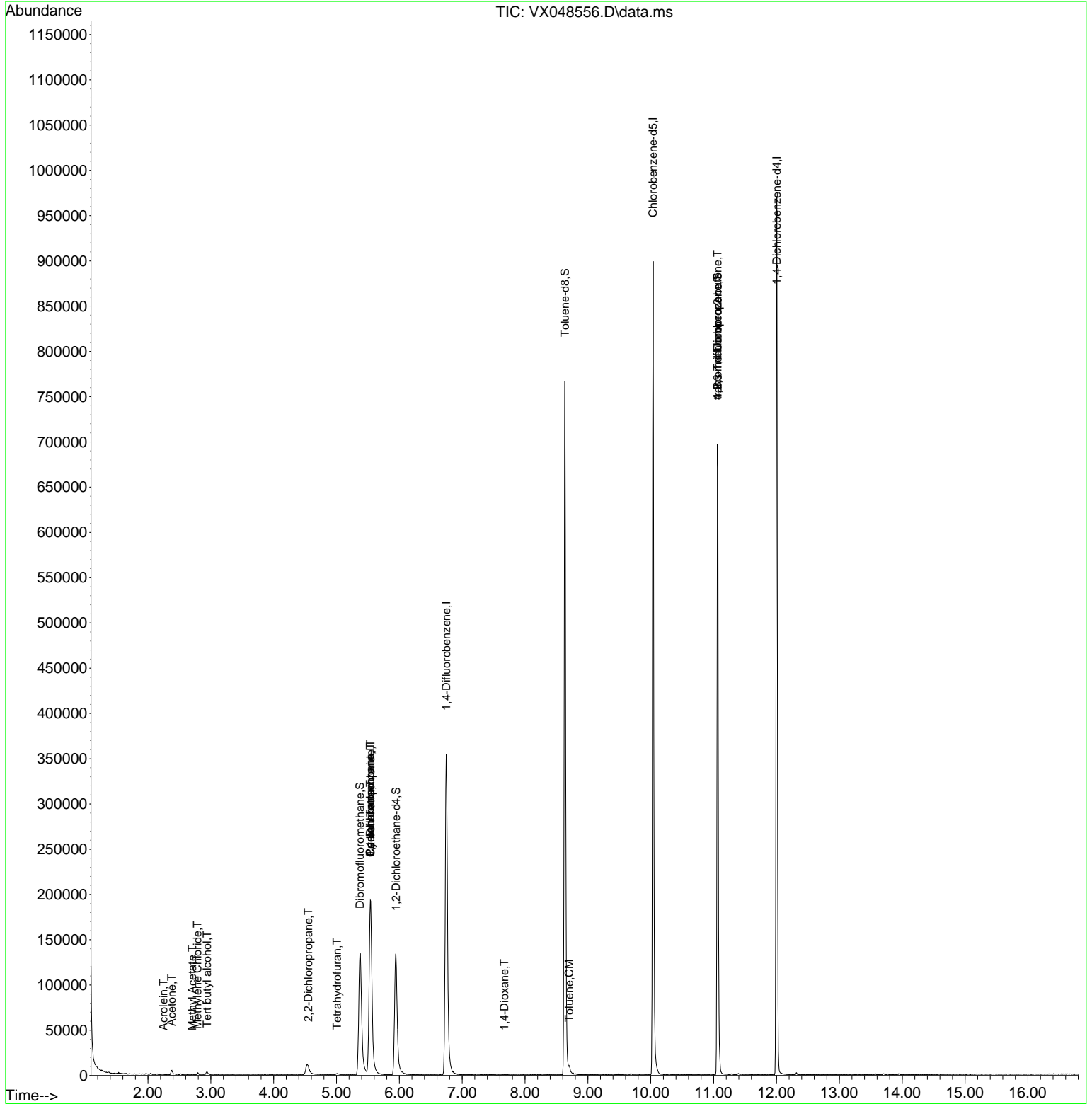
Internal Standards						
1) Pentafluorobenzene	5.538	168	213710	50.000	ug/l	0.00
34) 1,4-Difluorobenzene	6.745	114	420027	50.000	ug/l	0.00
63) Chlorobenzene-d5	10.037	117	432332	50.000	ug/l	0.00
72) 1,4-Dichlorobenzene-d4	12.006	152	225901	50.000	ug/l	0.00
System Monitoring Compounds						
33) 1,2-Dichloroethane-d4	5.946	65	146403	49.163	ug/l	0.00
Spiked Amount	50.000	Range 78 - 117	Recovery =	98.320%		
35) Dibromofluoromethane	5.373	113	138352	43.520	ug/l	0.00
Spiked Amount	50.000	Range 75 - 124	Recovery =	87.040%		
50) Toluene-d8	8.635	98	495865	50.012	ug/l	0.00
Spiked Amount	50.000	Range 92 - 112	Recovery =	100.020%		
62) 4-Bromofluorobenzene	11.061	95	207015	56.027	ug/l	0.00
Spiked Amount	50.000	Range 83 - 123	Recovery =	112.060%		
Target Compounds						
						Qvalue
11) Tert butyl alcohol	2.940	59	4576	8.110	ug/l #	91
13) Acrolein	2.245	56	91	1.115	ug/l #	15
16) Acetone	2.380	43	7007	4.971	ug/l	93
18) Methyl Acetate	2.703	43	1029	0.266	ug/l #	66
20) Methylene Chloride	2.788	84	1086	0.375	ug/l #	80
26) 2,2-Dichloropropane	4.550	77	1167	0.280	ug/l #	52
29) Tetrahydrofuran	5.007	42	1178	0.792	ug/l	93
31) Cyclohexane	5.538	56	3711	0.928	ug/l #	1
36) 1,1-Dichloropropene	5.538	75	15344	3.605	ug/l #	50
38) Carbon Tetrachloride	5.544	117	21033	4.340	ug/l #	16
49) 1,4-Dioxane	7.671	88	45	0.789	ug/l #	1
52) Toluene	8.702	92	1981	0.285	ug/l	89
76) 1,2,3-Trichloropropane	11.061	75	101153	18.586	ug/l #	30
81) trans-1,4-Dichloro-2-b...	11.061	75	101153	53.163	ug/l #	12

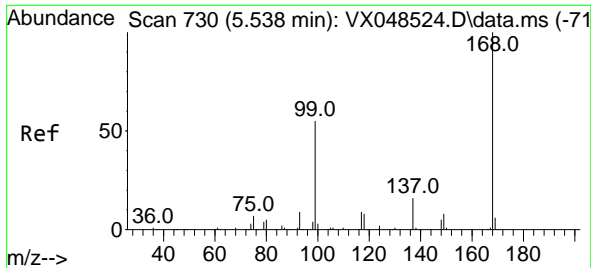
(#) = qualifier out of range (m) = manual integration (+) = signals summed

Data Path : Z:\voasrv\HPCHEM1\MSVOA_X\Data\VX111125\
 Data File : VX048556.D
 Acq On : 11 Nov 2025 12:04
 Operator : JC/MD
 Sample : Q3584-07 10X
 Misc : 5.0mL/MSVOA_X/WATER
 ALS Vial : 9 Sample Multiplier: 1

Instrument :
 MSVOA_X
 ClientSampleId :
 SEEP-1

Quant Time: Nov 12 04:44:24 2025
 Quant Method : Z:\voasrv\HPCHEM1\MSVOA_X\Method\82X110725W.M
 Quant Title : SW846 8260
 QLast Update : Sat Nov 08 05:08:11 2025
 Response via : Initial Calibration

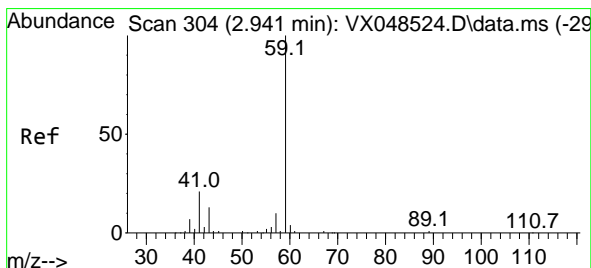
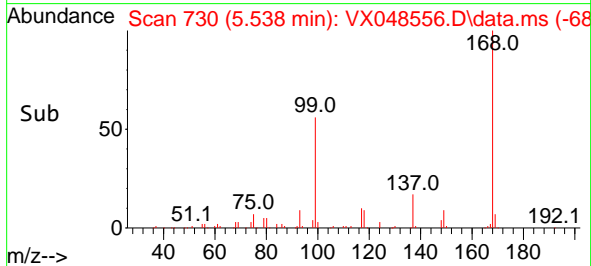
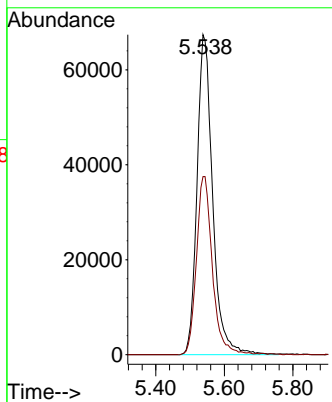
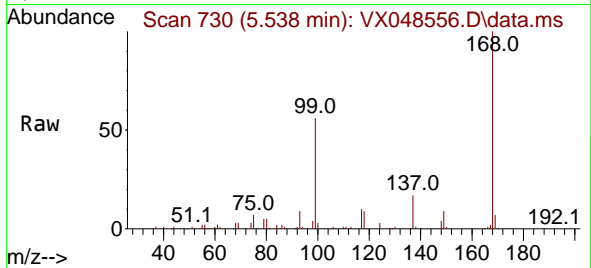




#1
 Pentafluorobenzene
 Concen: 50.000 ug/l
 RT: 5.538 min Scan# 71
 Delta R.T. -0.000 min
 Lab File: VX048556.D
 Acq: 11 Nov 2025 12:04

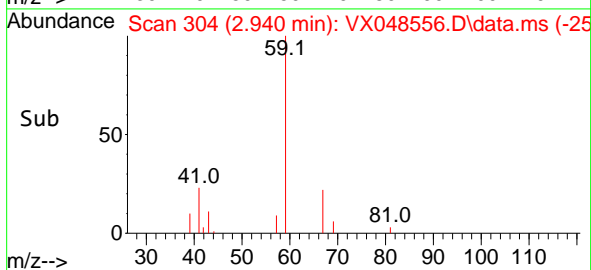
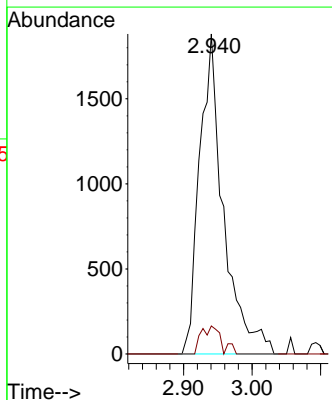
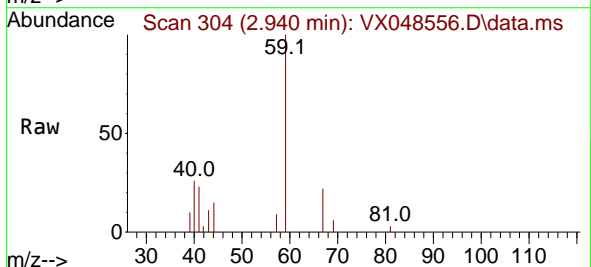
Instrument : MSVOA_X
 ClientSampleId : SEEP-1

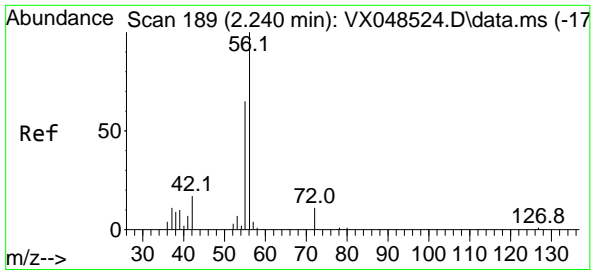
Tgt Ion:168 Resp: 213710
 Ion Ratio Lower Upper
 168 100
 99 55.6 45.2 67.8



#11
 Tert butyl alcohol
 Concen: 8.110 ug/l
 RT: 2.940 min Scan# 304
 Delta R.T. -0.000 min
 Lab File: VX048556.D
 Acq: 11 Nov 2025 12:04

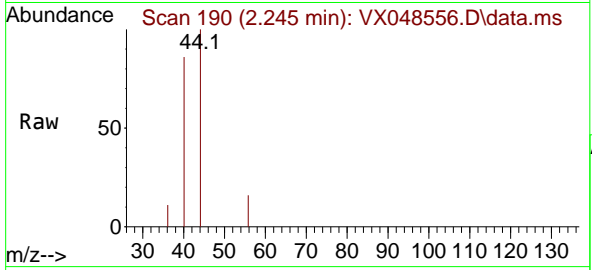
Tgt Ion: 59 Resp: 4576
 Ion Ratio Lower Upper
 59 100
 57 7.4 8.6 13.0#



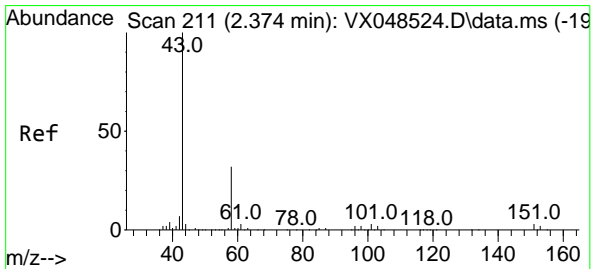
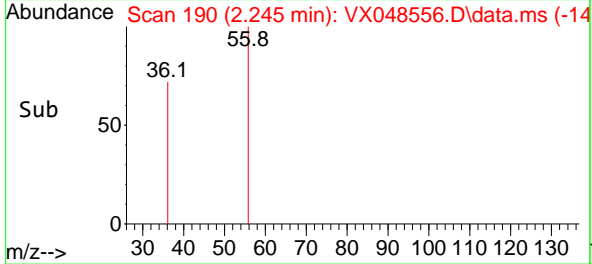
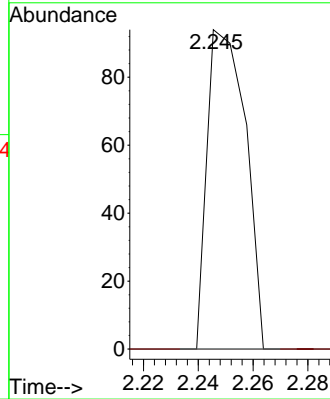


#13
 Acrolein
 Concen: 1.115 ug/l
 RT: 2.245 min Scan# 11
 Delta R.T. 0.006 min
 Lab File: VX048556.D
 Acq: 11 Nov 2025 12:04

Instrument :
 MSVOA_X
 ClientSampleId :
 SEEP-1

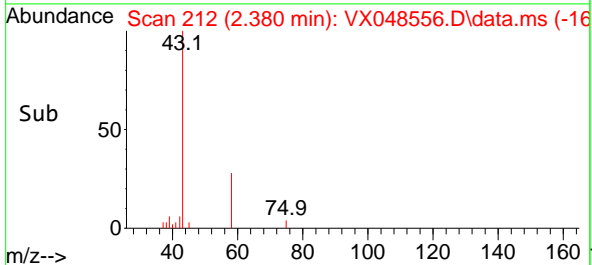
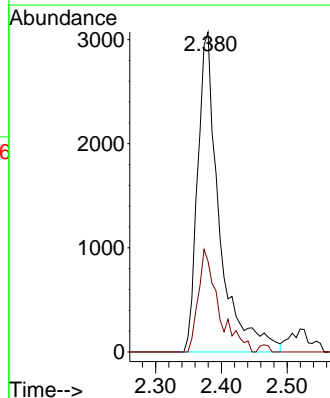
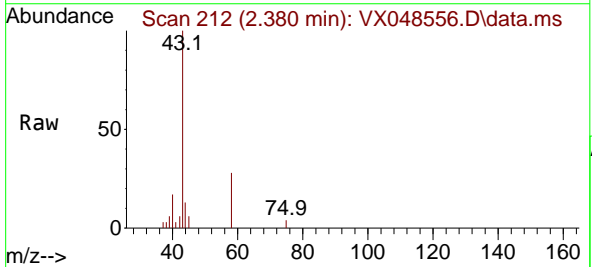


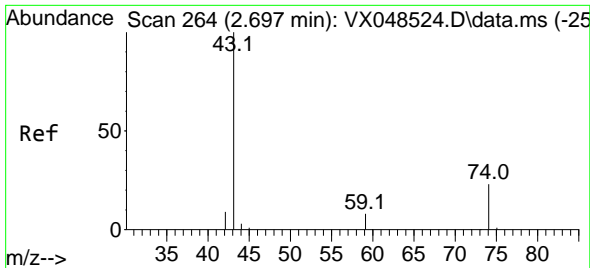
Tgt Ion: 56 Resp: 91
 Ion Ratio Lower Upper
 56 100
 55 0.0 54.9 82.3#



#16
 Acetone
 Concen: 4.971 ug/l
 RT: 2.380 min Scan# 212
 Delta R.T. 0.006 min
 Lab File: VX048556.D
 Acq: 11 Nov 2025 12:04

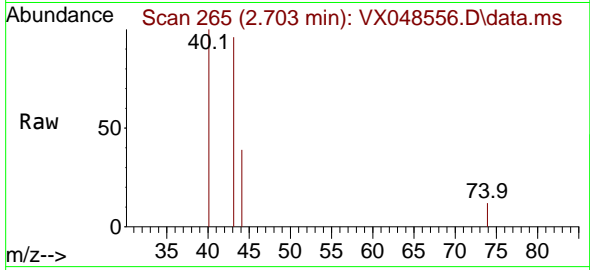
Tgt Ion: 43 Resp: 7007
 Ion Ratio Lower Upper
 43 100
 58 28.4 25.8 38.6



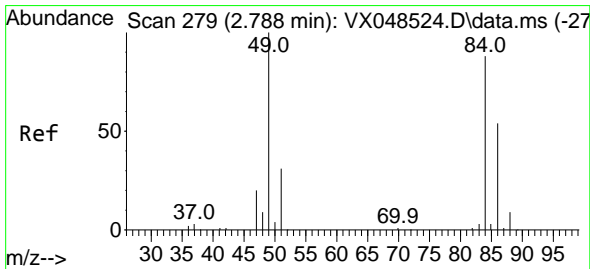
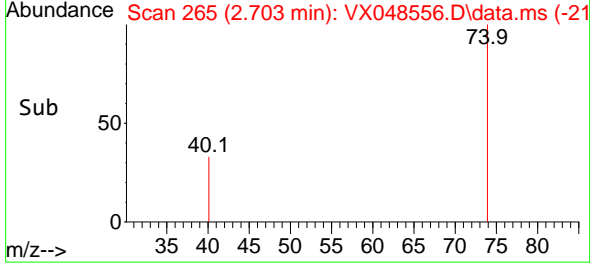
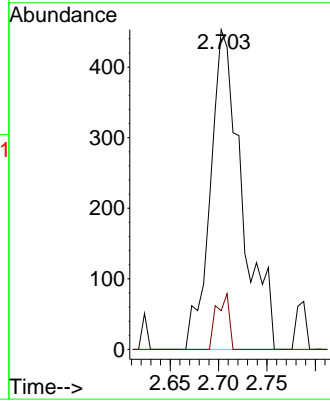


#18
 Methyl Acetate
 Concen: 0.266 ug/l
 RT: 2.703 min Scan# 20
 Delta R.T. 0.006 min
 Lab File: VX048556.D
 Acq: 11 Nov 2025 12:04

Instrument :
 MSVOA_X
 ClientSampleId :
 SEEP-1

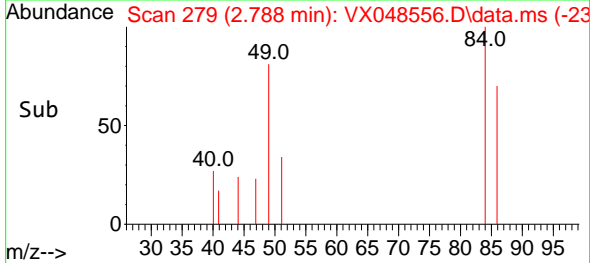
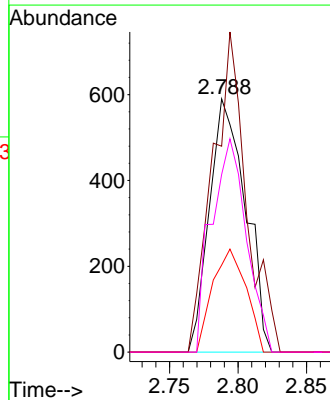
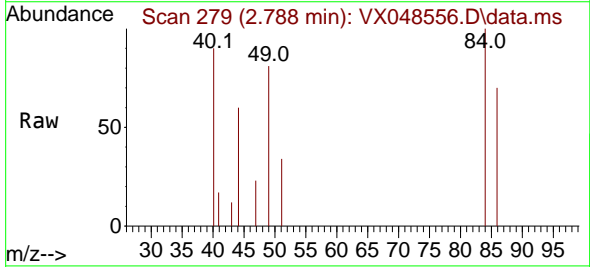


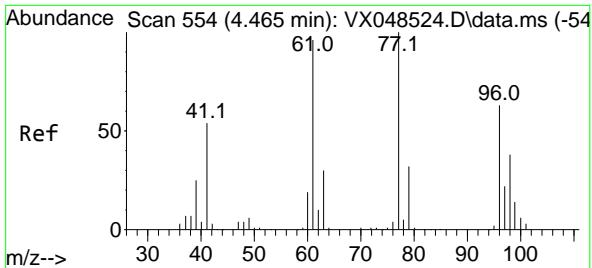
Tgt Ion: 43 Resp: 1029
 Ion Ratio Lower Upper
 43 100
 74 7.0 19.1 28.7#



#20
 Methylene Chloride
 Concen: 0.375 ug/l
 RT: 2.788 min Scan# 279
 Delta R.T. -0.000 min
 Lab File: VX048556.D
 Acq: 11 Nov 2025 12:04

Tgt Ion: 84 Resp: 1086
 Ion Ratio Lower Upper
 84 100
 49 81.4 91.2 136.8#
 51 34.4 28.3 42.5
 86 70.2 49.4 74.2

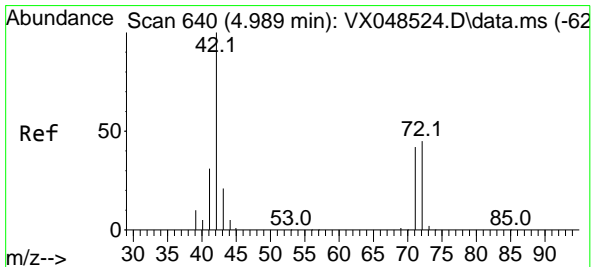
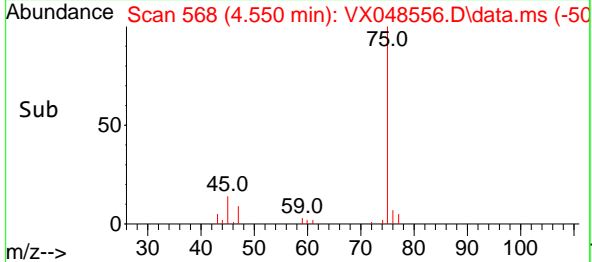
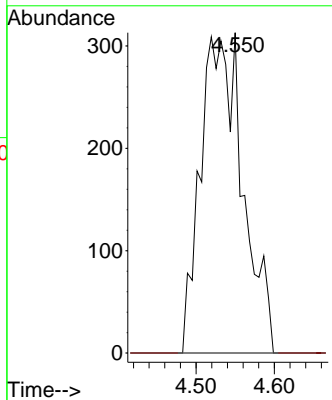
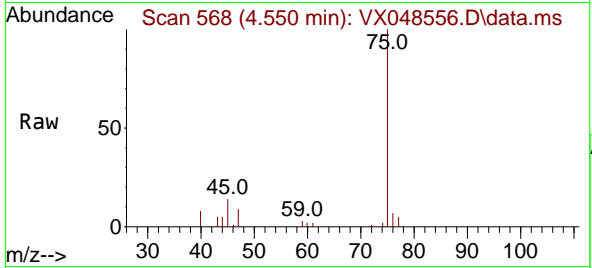




#26
 2,2-Dichloropropane
 Concen: 0.280 ug/l
 RT: 4.550 min Scan# 50
 Delta R.T. 0.085 min
 Lab File: VX048556.D
 Acq: 11 Nov 2025 12:04

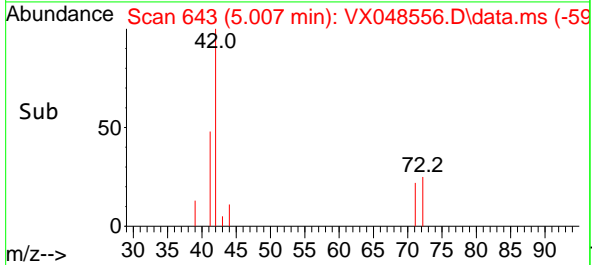
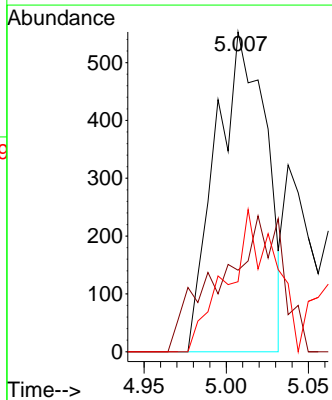
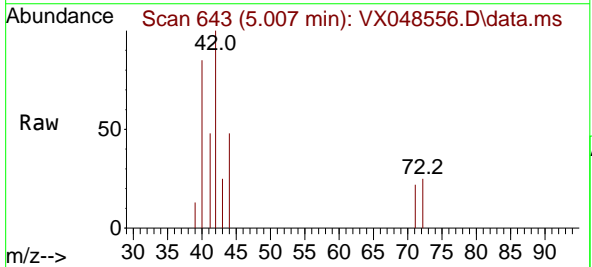
Instrument :
 MSVOA_X
 ClientSampleId :
 SEEP-1

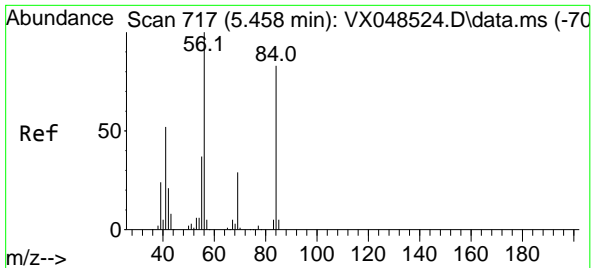
Tgt Ion: 77 Resp: 1167
 Ion Ratio Lower Upper
 77 100
 97 0.0 11.7 35.1#



#29
 Tetrahydrofuran
 Concen: 0.792 ug/l
 RT: 5.007 min Scan# 643
 Delta R.T. 0.018 min
 Lab File: VX048556.D
 Acq: 11 Nov 2025 12:04

Tgt Ion: 42 Resp: 1178
 Ion Ratio Lower Upper
 42 100
 72 53.0 36.3 54.5
 71 41.7 34.1 51.1

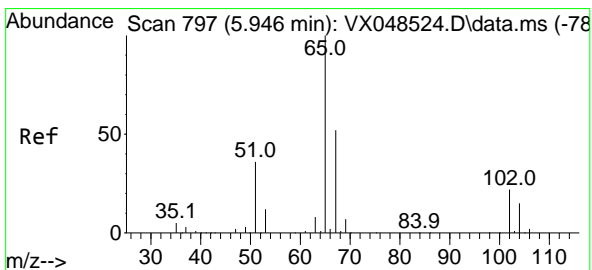
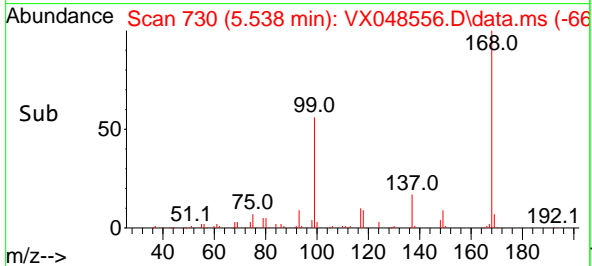
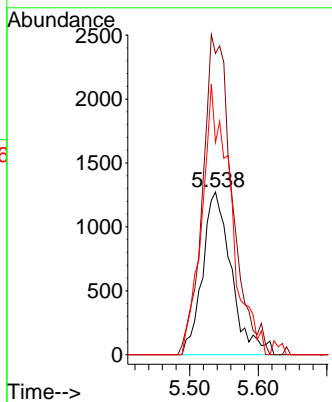
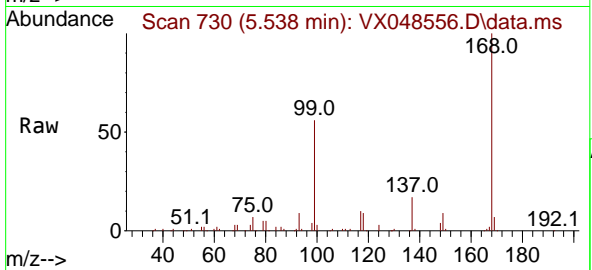




#31
 Cyclohexane
 Concen: 0.928 ug/l
 RT: 5.538 min Scan# 717
 Delta R.T. 0.079 min
 Lab File: VX048556.D
 Acq: 11 Nov 2025 12:04

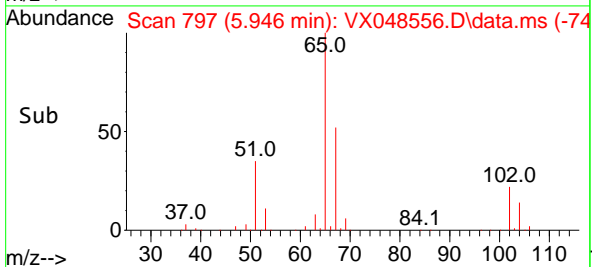
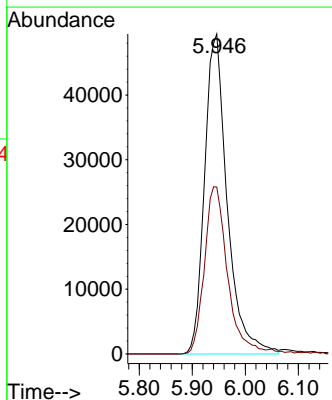
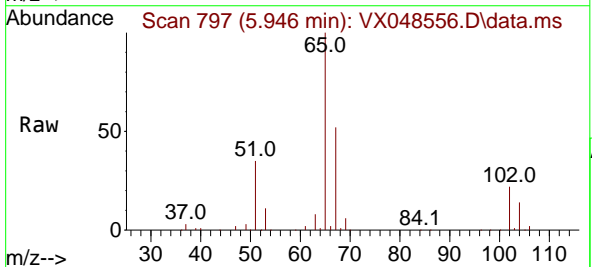
Instrument : MSVOA_X
 ClientSampleId : SEEP-1

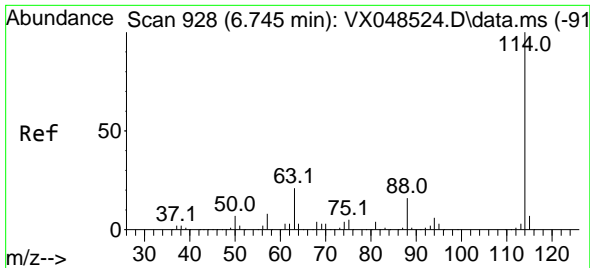
Tgt Ion	Resp	Lower	Upper
56	3711		
69	185.1	23.4	35.2#
84	130.4	66.3	99.5#



#33
 1,2-Dichloroethane-d4
 Concen: 49.163 ug/l
 RT: 5.946 min Scan# 797
 Delta R.T. -0.000 min
 Lab File: VX048556.D
 Acq: 11 Nov 2025 12:04

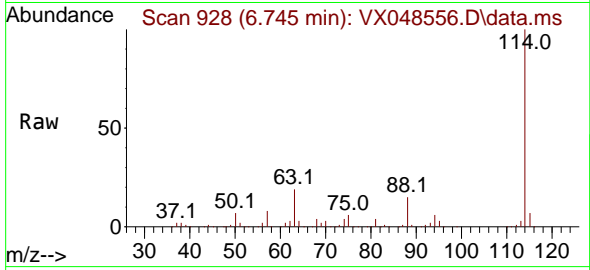
Tgt Ion	Resp	Lower	Upper
65	146403		
67	54.0	0.0	106.2



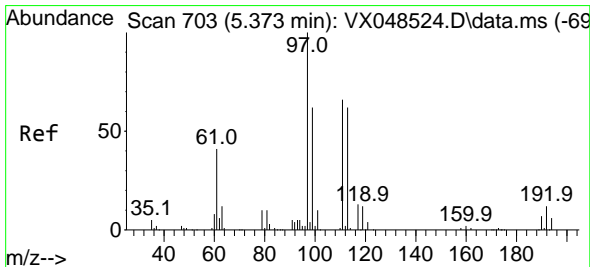
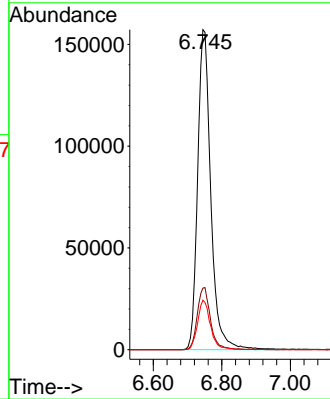
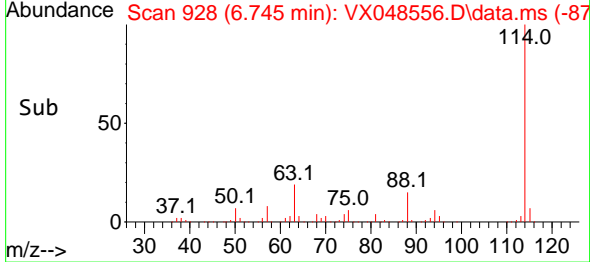


#34
 1,4-Difluorobenzene
 Concen: 50.000 ug/l
 RT: 6.745 min Scan# 91
 Delta R.T. -0.000 min
 Lab File: VX048556.D
 Acq: 11 Nov 2025 12:04

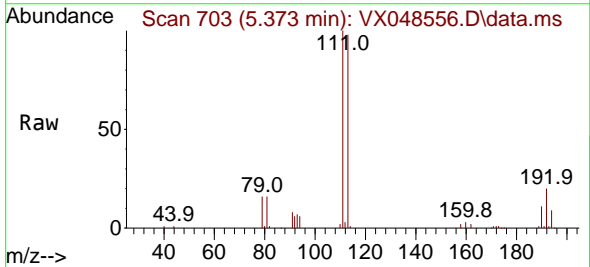
Instrument :
 MSVOA_X
 ClientSampleId :
 SEEP-1



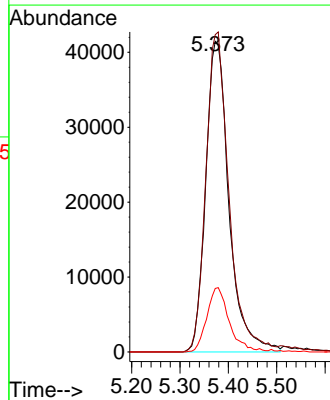
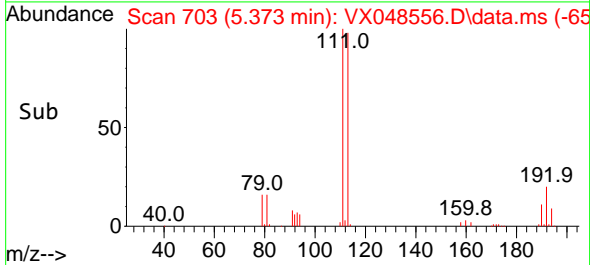
Tgt Ion:114 Resp: 420027
 Ion Ratio Lower Upper
 114 100
 63 19.3 0.0 41.2
 88 15.4 0.0 32.2

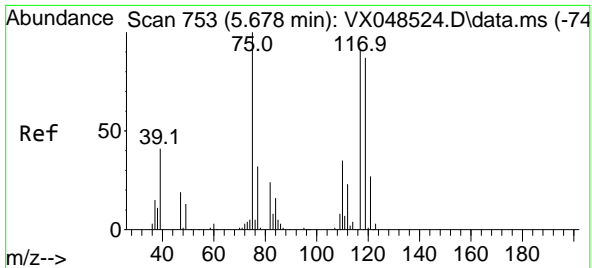


#35
 Dibromofluoromethane
 Concen: 43.520 ug/l
 RT: 5.373 min Scan# 703
 Delta R.T. -0.000 min
 Lab File: VX048556.D
 Acq: 11 Nov 2025 12:04



Tgt Ion:113 Resp: 138352
 Ion Ratio Lower Upper
 113 100
 111 102.4 81.9 122.9
 192 20.0 15.8 23.6



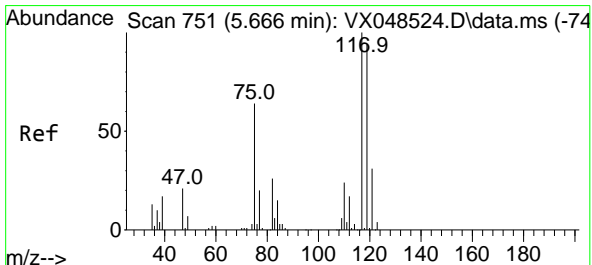
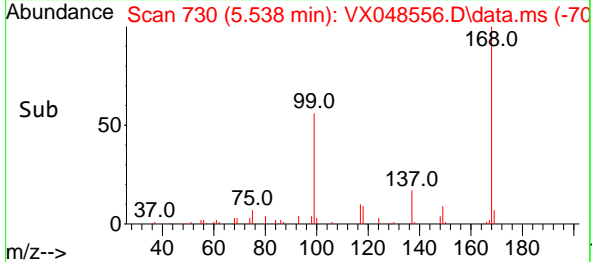
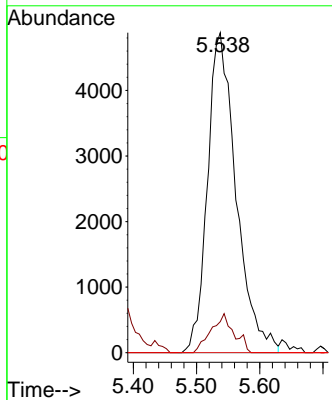
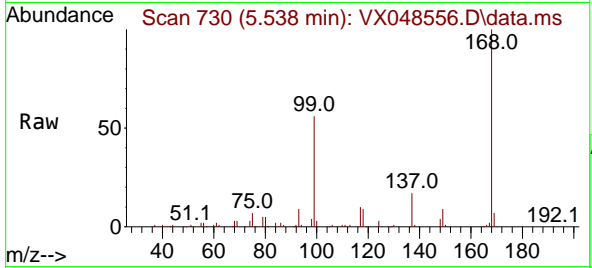


#36
 1,1-Dichloropropene
 Concen: 3.605 ug/l
 RT: 5.538 min Scan# 710
 Delta R.T. -0.140 min
 Lab File: VX048556.D
 Acq: 11 Nov 2025 12:04

Instrument : MSVOA_X
 ClientSampleId : SEEP-1

Tgt Ion: 75 Resp: 15344

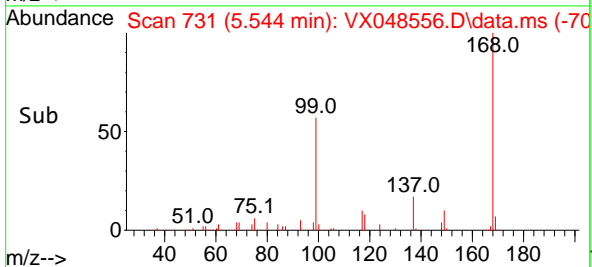
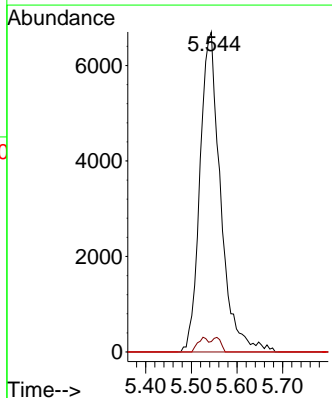
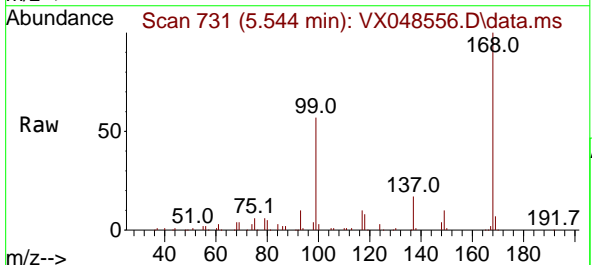
Ion	Ratio	Lower	Upper
75	100		
110	9.8	18.4	55.4#
77	0.0	24.6	37.0#

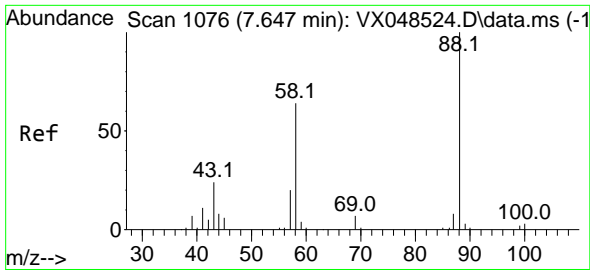


#38
 Carbon Tetrachloride
 Concen: 4.340 ug/l
 RT: 5.544 min Scan# 731
 Delta R.T. -0.122 min
 Lab File: VX048556.D
 Acq: 11 Nov 2025 12:04

Tgt Ion: 117 Resp: 21033

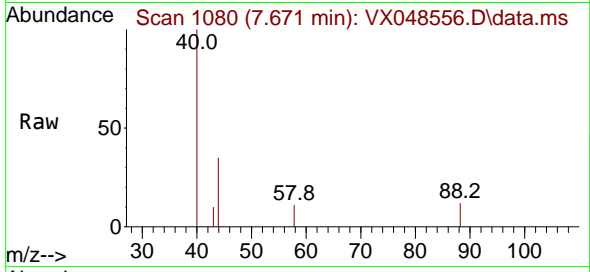
Ion	Ratio	Lower	Upper
117	100		
119	3.3	74.5	111.7#
121	0.0	24.8	37.2#



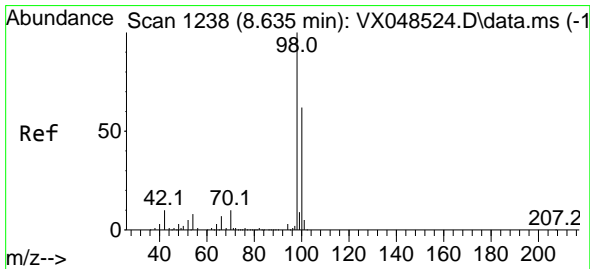
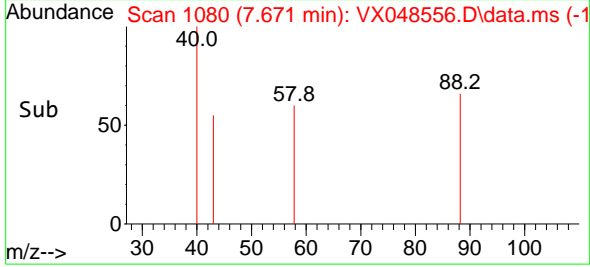
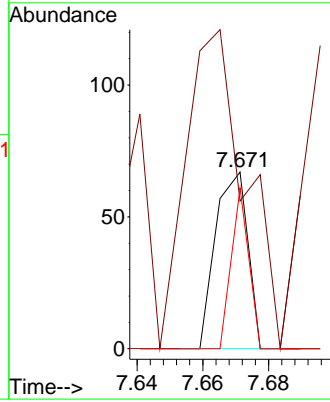


#49
 1,4-Dioxane
 Concen: 0.789 ug/l
 RT: 7.671 min Scan# 1076
 Delta R.T. 0.024 min
 Lab File: VX048556.D
 Acq: 11 Nov 2025 12:04

Instrument :
 MSVOA_X
 ClientSampleId :
 SEEP-1

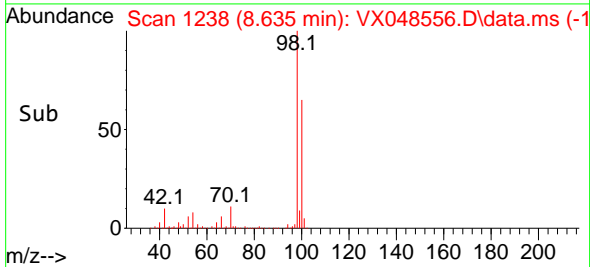
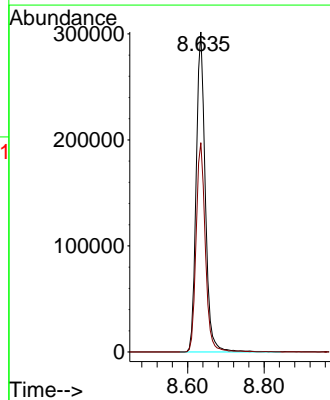
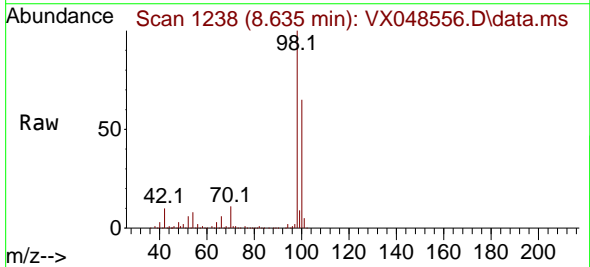


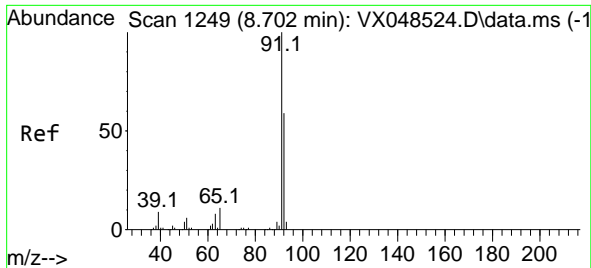
Tgt Ion	Resp	Lower	Upper
88	100		
43	335.6	25.1	37.7#
58	48.9	56.7	85.1#



#50
 Toluene-d8
 Concen: 50.012 ug/l
 RT: 8.635 min Scan# 1238
 Delta R.T. -0.000 min
 Lab File: VX048556.D
 Acq: 11 Nov 2025 12:04

Tgt Ion	Resp	Lower	Upper
98	100		
100	66.5	53.6	80.4

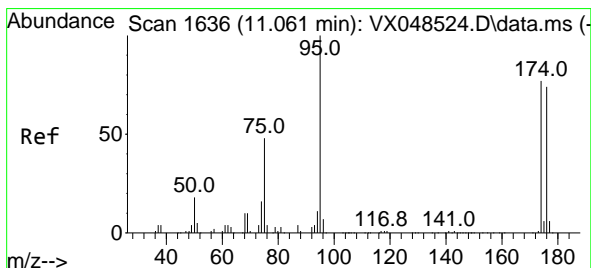
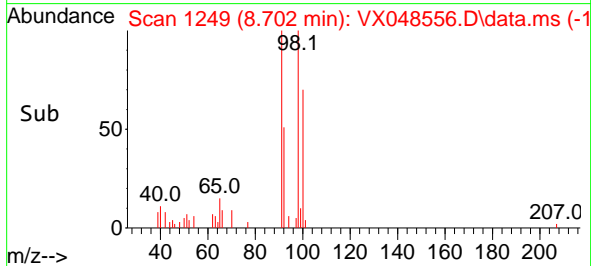
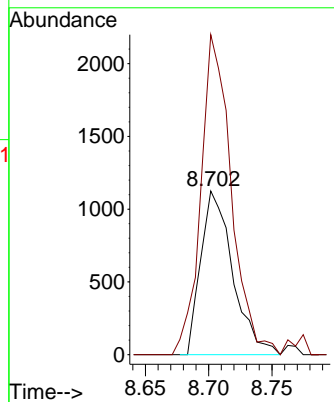
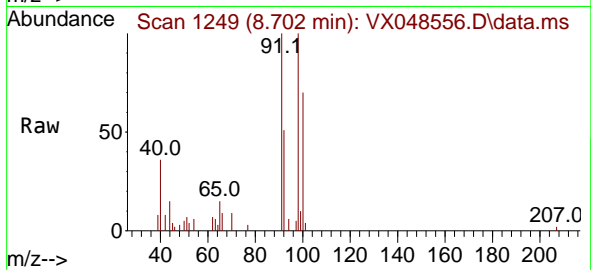




#52
 Toluene
 Concen: 0.285 ug/l
 RT: 8.702 min Scan# 11
 Delta R.T. -0.000 min
 Lab File: VX048556.D
 Acq: 11 Nov 2025 12:04

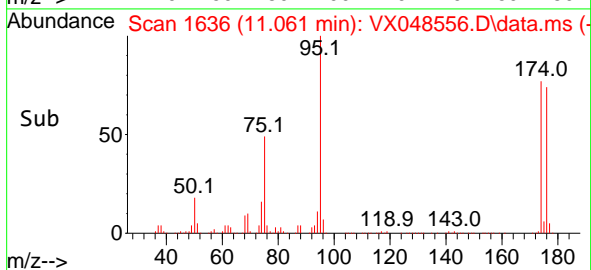
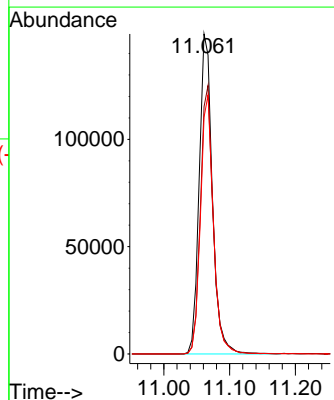
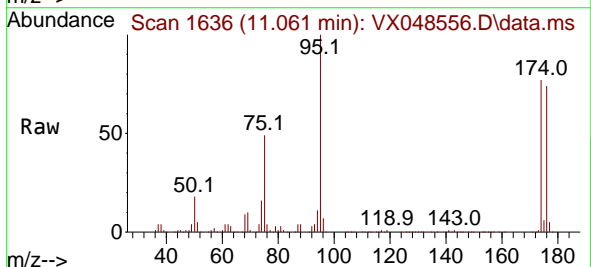
Instrument : MSVOA_X
 ClientSampleId : SEEP-1

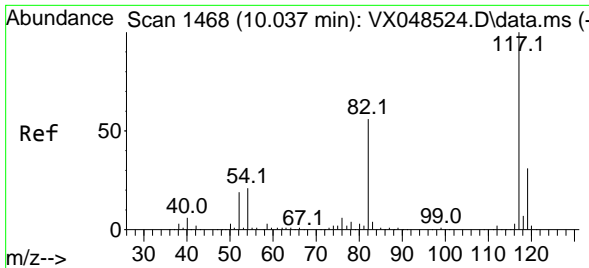
Tgt Ion: 92 Resp: 1981
 Ion Ratio Lower Upper
 92 100
 91 186.2 137.0 205.6



#62
 4-Bromofluorobenzene
 Concen: 56.027 ug/l
 RT: 11.061 min Scan# 1636
 Delta R.T. -0.000 min
 Lab File: VX048556.D
 Acq: 11 Nov 2025 12:04

Tgt Ion: 95 Resp: 207015
 Ion Ratio Lower Upper
 95 100
 174 81.9 0.0 161.8
 176 79.4 0.0 153.6



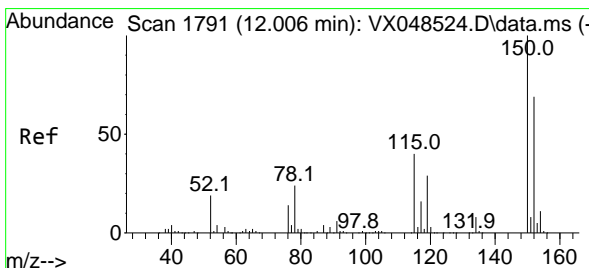
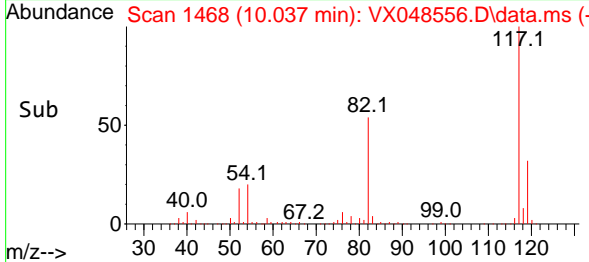
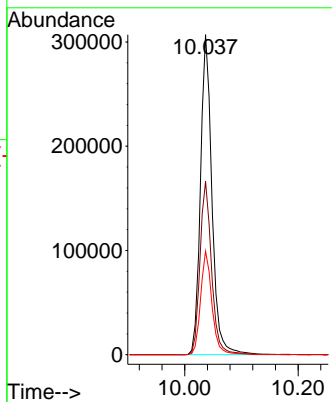
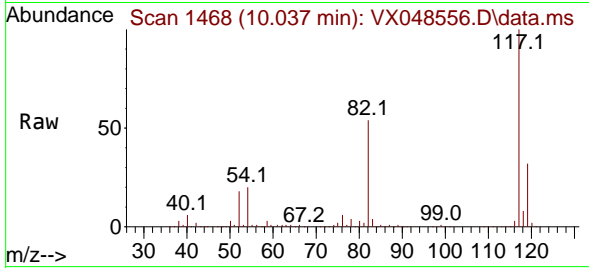


#63
 Chlorobenzene-d5
 Concen: 50.000 ug/l
 RT: 10.037 min Scan# 1468
 Delta R.T. -0.000 min
 Lab File: VX048556.D
 Acq: 11 Nov 2025 12:04

Instrument : MSVOA_X
 ClientSampleId : SEEP-1

Tgt Ion:117 Resp: 432332

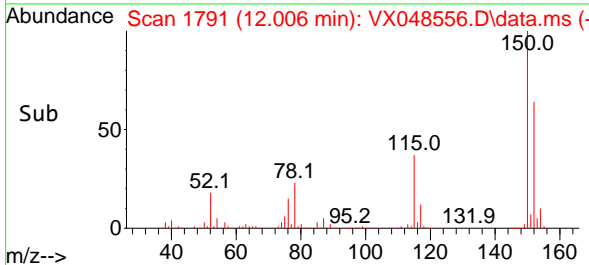
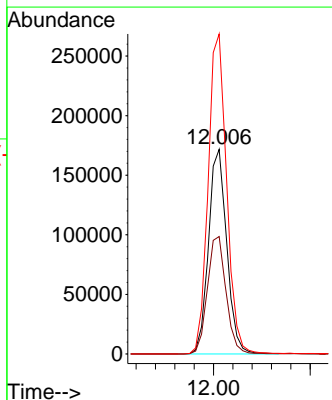
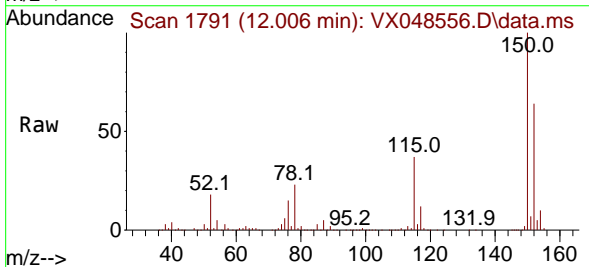
Ion	Ratio	Lower	Upper
117	100		
82	54.2	44.4	66.6
119	32.4	25.1	37.7

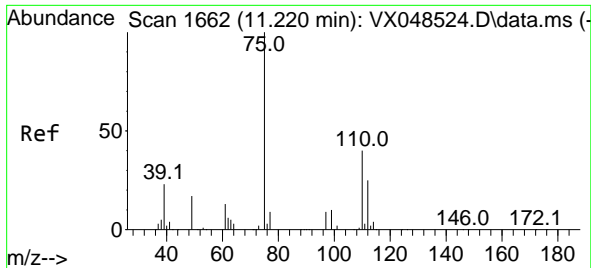


#72
 1,4-Dichlorobenzene-d4
 Concen: 50.000 ug/l
 RT: 12.006 min Scan# 1791
 Delta R.T. -0.000 min
 Lab File: VX048556.D
 Acq: 11 Nov 2025 12:04

Tgt Ion:152 Resp: 225901

Ion	Ratio	Lower	Upper
152	100		
115	58.7	39.2	117.6
150	158.2	0.0	347.0

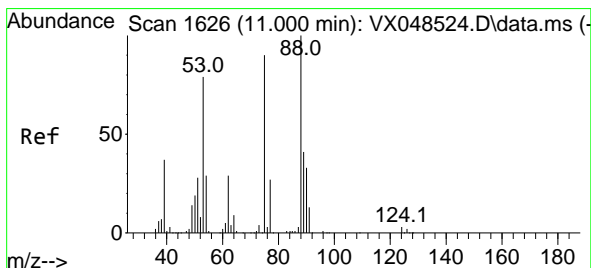
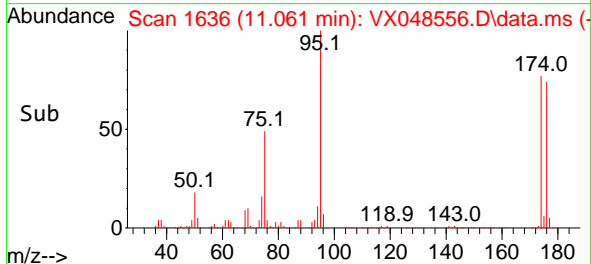
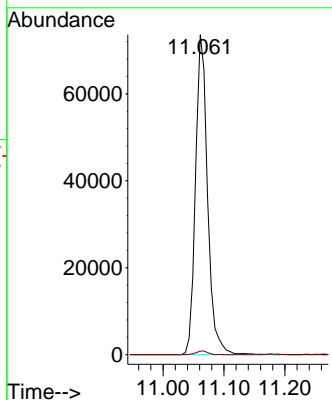
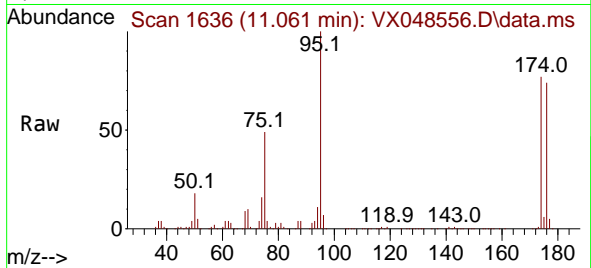




#76
 1,2,3-Trichloropropane
 Concen: 18.586 ug/l
 RT: 11.061 min Scan# 1636
 Delta R.T. -0.159 min
 Lab File: VX048556.D
 Acq: 11 Nov 2025 12:04

Instrument : MSVOA_X
 ClientSampleId : SEEP-1

Tgt Ion: 75 Resp: 101153
 Ion Ratio Lower Upper
 75 100
 77 1.1 24.3 72.8#



#81
 trans-1,4-Dichloro-2-butene
 Concen: 53.163 ug/l
 RT: 11.061 min Scan# 1636
 Delta R.T. 0.061 min
 Lab File: VX048556.D
 Acq: 11 Nov 2025 12:04

Tgt Ion: 75 Resp: 101153
 Ion Ratio Lower Upper
 75 100
 53 0.0 72.4 108.6#
 89 0.0 43.6 65.4#

