

Data Path : Z:\voasrv\HPCHEM1\MSVOA_X\Data\VX111125\
 Data File : VX048557.D
 Acq On : 11 Nov 2025 12:24
 Operator : JC/MD
 Sample : Q3569-02DL 5X
 Misc : 5.0mL/MSVOA_X/WATER
 ALS Vial : 10 Sample Multiplier: 1

Instrument :
 MSVOA_X
 ClientSampleId :
 MW-12DL

Quant Time: Nov 12 04:44:45 2025
 Quant Method : Z:\voasrv\HPCHEM1\MSVOA_X\Method\82X110725W.M
 Quant Title : SW846 8260
 QLast Update : Sat Nov 08 05:08:11 2025
 Response via : Initial Calibration

Compound	R.T.	QIon	Response	Conc	Units	Dev(Min)

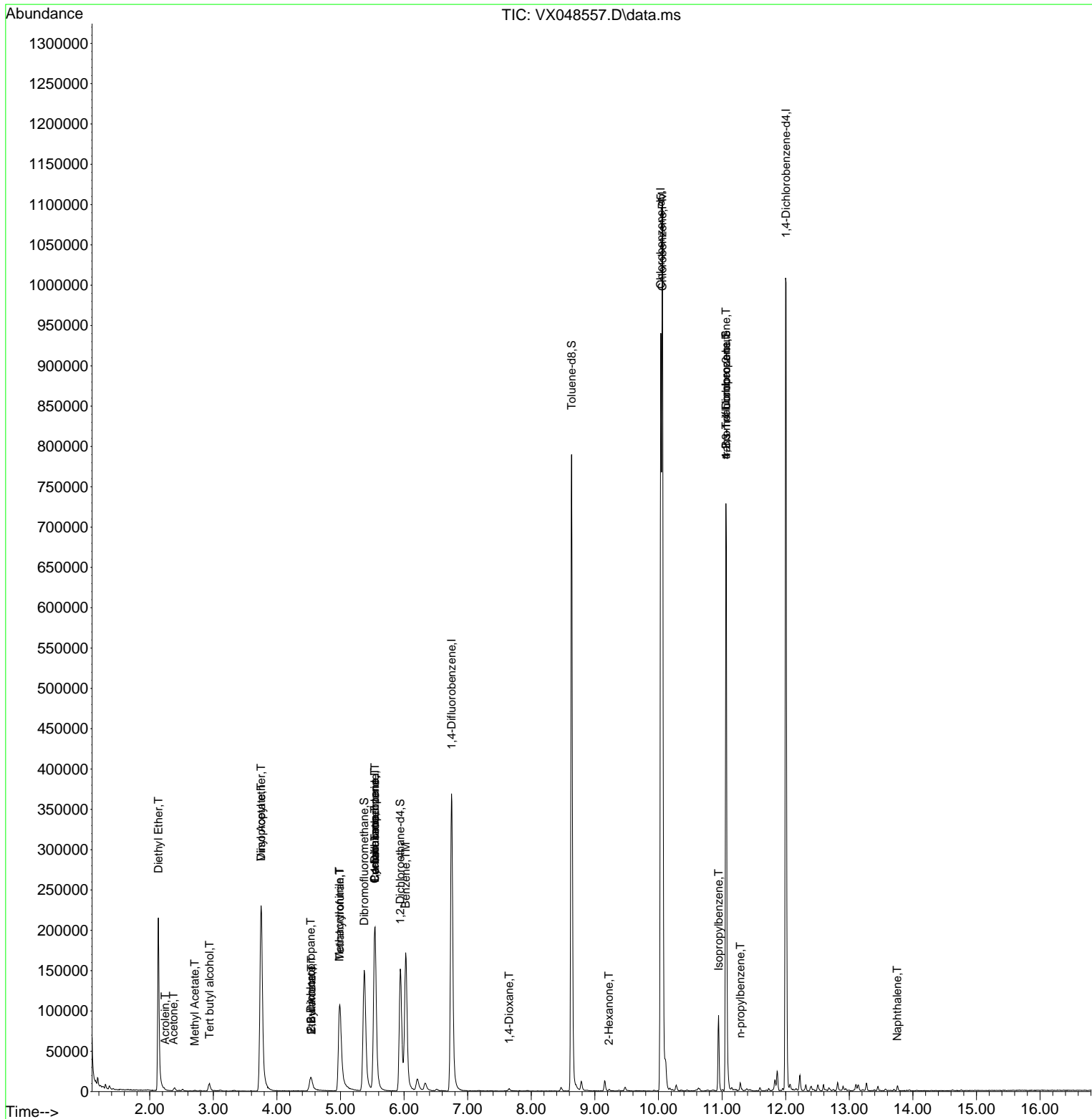
Internal Standards						
1) Pentafluorobenzene	5.544	168	220460	50.000	ug/l	0.00
34) 1,4-Difluorobenzene	6.745	114	428617	50.000	ug/l	0.00
63) Chlorobenzene-d5	10.037	117	439851	50.000	ug/l	0.00
72) 1,4-Dichlorobenzene-d4	12.006	152	230176	50.000	ug/l	0.00
System Monitoring Compounds						
33) 1,2-Dichloroethane-d4	5.940	65	163400	53.191	ug/l	0.00
Spiked Amount	50.000	Range 78 - 117	Recovery	=	106.380%	
35) Dibromofluoromethane	5.373	113	148320	45.721	ug/l	0.00
Spiked Amount	50.000	Range 75 - 124	Recovery	=	91.440%	
50) Toluene-d8	8.635	98	520240	51.419	ug/l	0.00
Spiked Amount	50.000	Range 92 - 112	Recovery	=	102.840%	
62) 4-Bromofluorobenzene	11.061	95	213570	56.642	ug/l	0.00
Spiked Amount	50.000	Range 83 - 123	Recovery	=	113.280%	
Target Compounds						
						Qvalue
8) Diethyl Ether	2.136	74	86412	50.723	ug/l	95
11) Tert butyl alcohol	2.940	59	11699	20.098	ug/l	95
13) Acrolein	2.239	56	73	0.867	ug/l #	1
16) Acetone	2.373	43	2048	1.408	ug/l #	74
18) Methyl Acetate	2.709	43	1073	0.269	ug/l	92
22) Diisopropyl ether	3.751	45	295279	32.183	ug/l #	50
23) Vinyl Acetate	3.751	43	142178	17.693	ug/l #	71
25) 2-Butanone	4.544	43	1560	0.725	ug/l #	48
26) 2,2-Dichloropropane	4.532	77	1726	0.402	ug/l #	52
29) Tetrahydrofuran	4.989	42	128276	83.610	ug/l	96
31) Cyclohexane	5.538	56	4306	1.044	ug/l #	1
36) 1,1-Dichloropropene	5.538	75	17167	3.952	ug/l #	49
37) Ethyl Acetate	4.544	43	1560	0.255	ug/l #	71
38) Carbon Tetrachloride	5.544	117	21646	4.377	ug/l #	17
40) Benzene	6.025	78	226911	16.852	ug/l	99
41) Methacrylonitrile	4.983	41	68208	25.365	ug/l #	40
49) 1,4-Dioxane	7.653	88	2444	41.977	ug/l #	89
59) 2-Hexanone	9.220	43	1392	0.382	ug/l	65
65) Chlorobenzene	10.061	112	487031	46.650	ug/l	99
73) Isopropylbenzene	10.945	105	50007	2.993	ug/l	99
76) 1,2,3-Trichloropropane	11.061	75	104138	18.780	ug/l #	31
78) n-propylbenzene	11.287	91	5386	0.274	ug/l	96
81) trans-1,4-Dichloro-2-b...	11.061	75	104138	53.716	ug/l #	12
95) Naphthalene	13.756	128	4600	0.277	ug/l	98

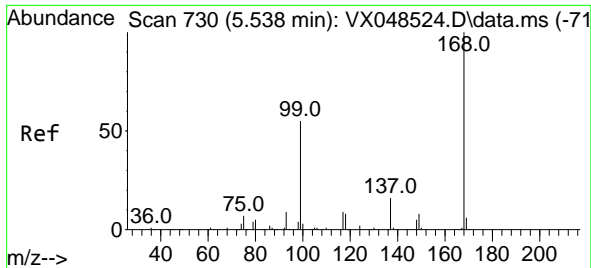
(#) = qualifier out of range (m) = manual integration (+) = signals summed

Data Path : Z:\voasrv\HPCHEM1\MSVOA_X\Data\VX111125\
 Data File : VX048557.D
 Acq On : 11 Nov 2025 12:24
 Operator : JC/MD
 Sample : Q3569-02DL 5X
 Misc : 5.0mL/MSVOA_X/WATER
 ALS Vial : 10 Sample Multiplier: 1

Instrument :
 MSVOA_X
 ClientSampleId :
 MW-12DL

Quant Time: Nov 12 04:44:45 2025
 Quant Method : Z:\voasrv\HPCHEM1\MSVOA_X\Method\82X110725W.M
 Quant Title : SW846 8260
 QLast Update : Sat Nov 08 05:08:11 2025
 Response via : Initial Calibration

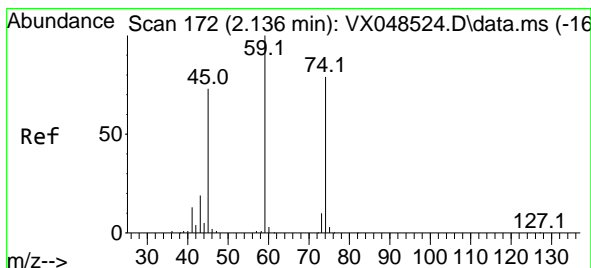
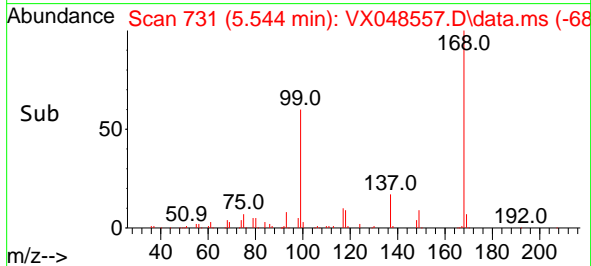
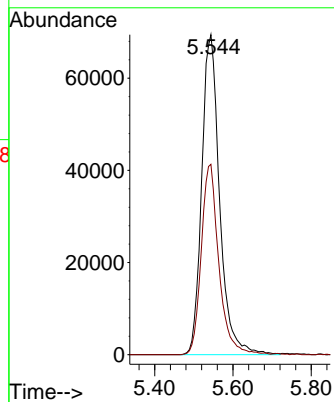
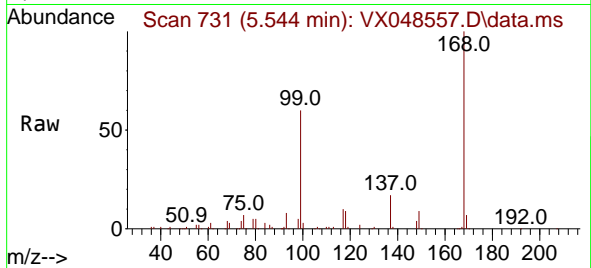




#1
 Pentafluorobenzene
 Concen: 50.000 ug/l
 RT: 5.544 min Scan# 731
 Delta R.T. 0.006 min
 Lab File: VX048557.D
 Acq: 11 Nov 2025 12:24

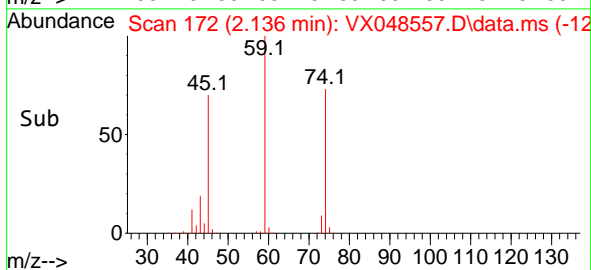
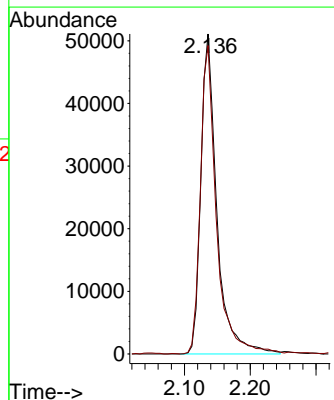
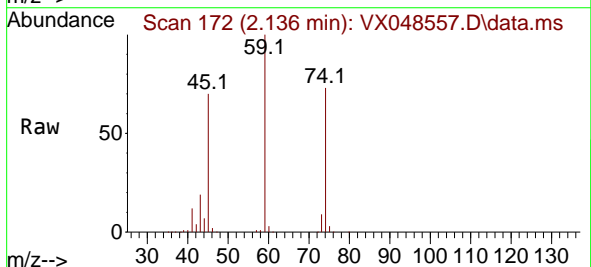
Instrument :
 MSVOA_X
 ClientSampleId :
 MW-12DL

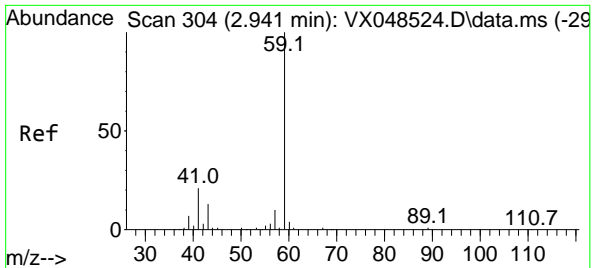
Tgt Ion:168 Resp: 220460
 Ion Ratio Lower Upper
 168 100
 99 59.5 45.2 67.8



#8
 Diethyl Ether
 Concen: 50.723 ug/l
 RT: 2.136 min Scan# 172
 Delta R.T. -0.000 min
 Lab File: VX048557.D
 Acq: 11 Nov 2025 12:24

Tgt Ion: 74 Resp: 86412
 Ion Ratio Lower Upper
 74 100
 45 96.8 45.9 137.6

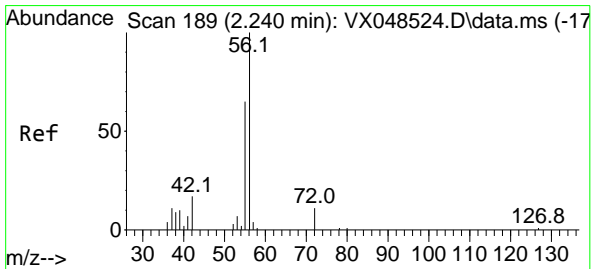
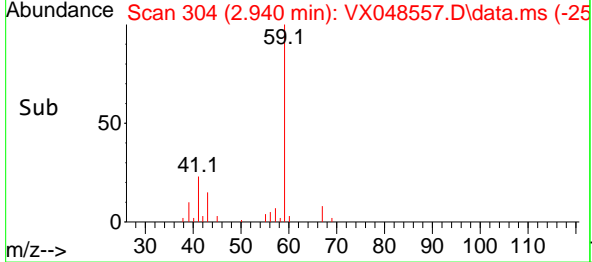
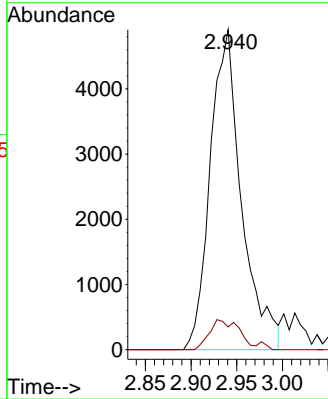
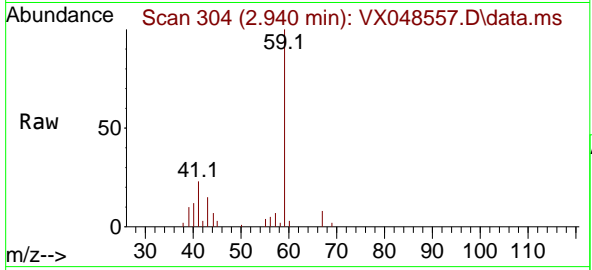




#11
 Tert butyl alcohol
 Concen: 20.098 ug/l
 RT: 2.940 min Scan# 304
 Delta R.T. -0.000 min
 Lab File: VX048557.D
 Acq: 11 Nov 2025 12:24

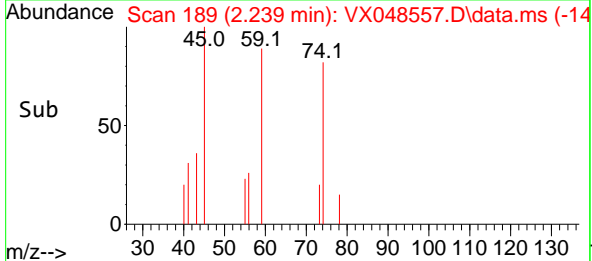
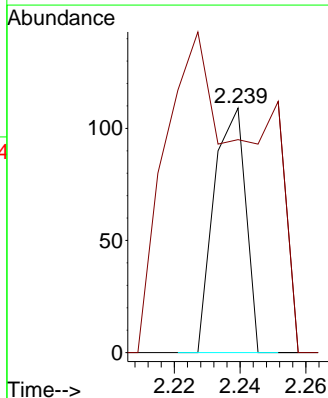
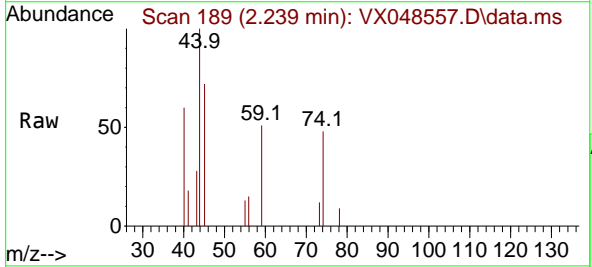
Instrument : MSVOA_X
 ClientSampleId : MW-12DL

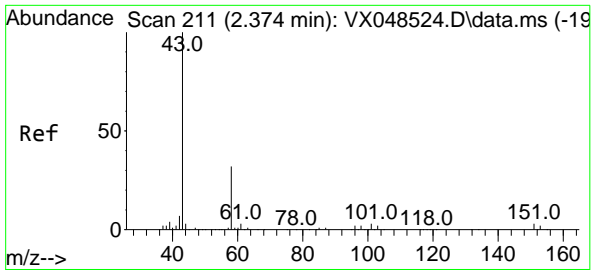
Tgt Ion: 59 Resp: 11699
 Ion Ratio Lower Upper
 59 100
 57 8.9 8.6 13.0



#13
 Acrolein
 Concen: 0.867 ug/l
 RT: 2.239 min Scan# 189
 Delta R.T. -0.000 min
 Lab File: VX048557.D
 Acq: 11 Nov 2025 12:24

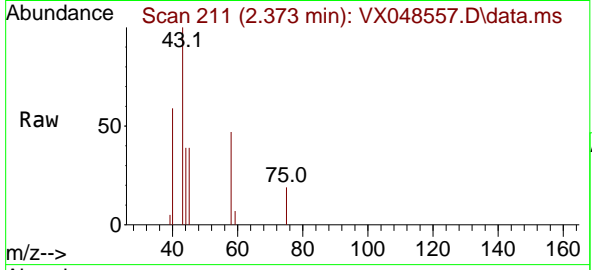
Tgt Ion: 56 Resp: 73
 Ion Ratio Lower Upper
 56 100
 55 367.1 54.9 82.3#



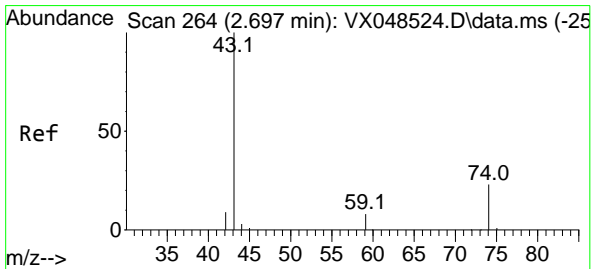
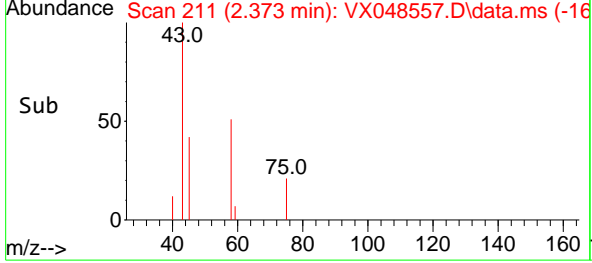
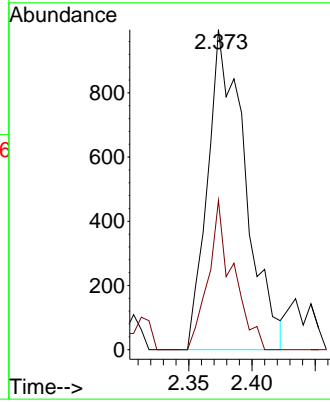


#16
 Acetone
 Concen: 1.408 ug/l
 RT: 2.373 min Scan# 211
 Delta R.T. -0.000 min
 Lab File: VX048557.D
 Acq: 11 Nov 2025 12:24

Instrument : MSVOA_X
 Client SampleID : MW-12DL

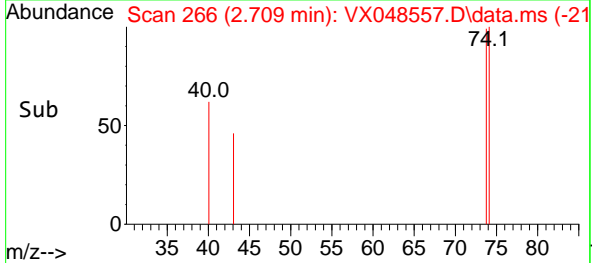
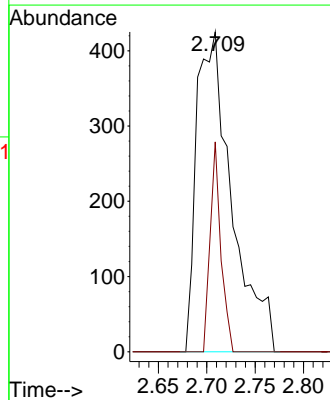
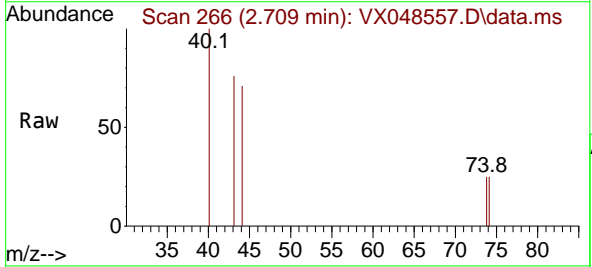


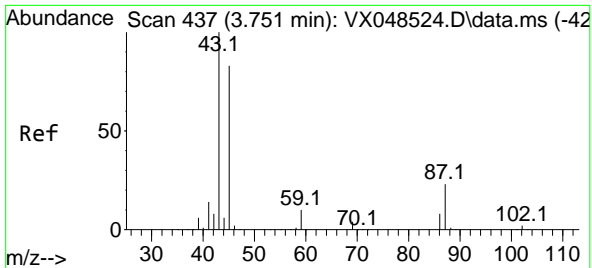
Tgt Ion: 43 Resp: 2048
 Ion Ratio Lower Upper
 43 100
 58 46.6 25.8 38.6#



#18
 Methyl Acetate
 Concen: 0.269 ug/l
 RT: 2.709 min Scan# 266
 Delta R.T. 0.012 min
 Lab File: VX048557.D
 Acq: 11 Nov 2025 12:24

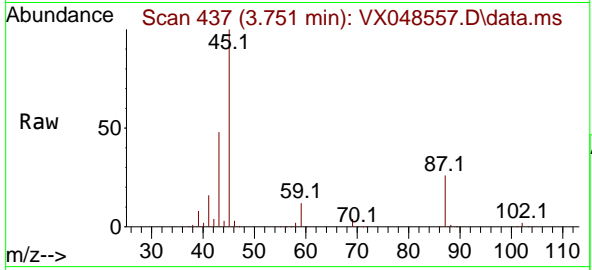
Tgt Ion: 43 Resp: 1073
 Ion Ratio Lower Upper
 43 100
 74 20.1 19.1 28.7





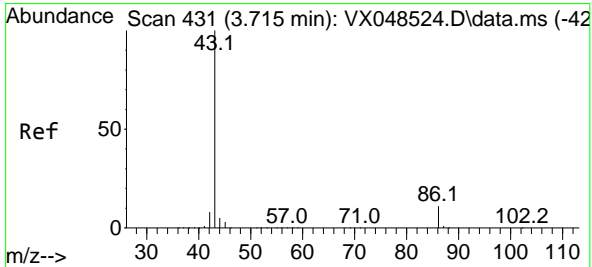
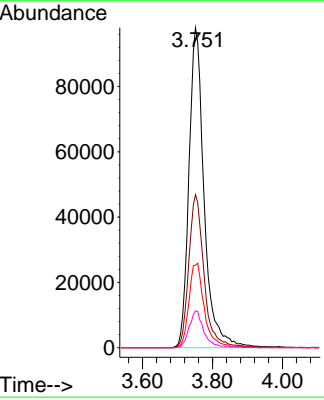
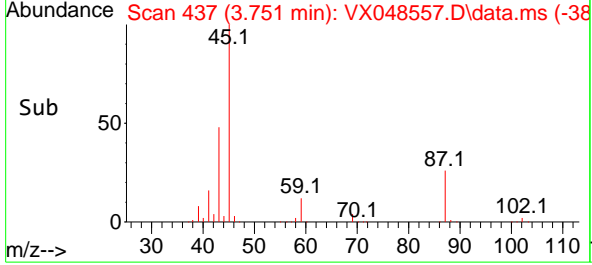
#22
 Diisopropyl ether
 Concen: 32.183 ug/l
 RT: 3.751 min Scan# 41
 Delta R.T. -0.000 min
 Lab File: VX048557.D
 Acq: 11 Nov 2025 12:24

Instrument :
 MSVOA_X
 ClientSampleId :
 MW-12DL

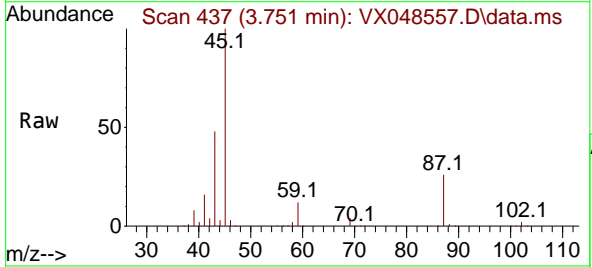


Tgt Ion: 45 Resp: 295279

Ion	Ratio	Lower	Upper
45	100		
43	47.8	96.4	144.6#
87	25.8	21.8	32.6
59	11.5	9.6	14.4

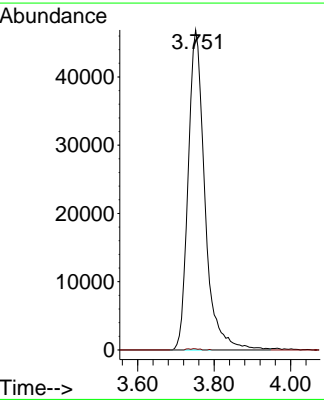
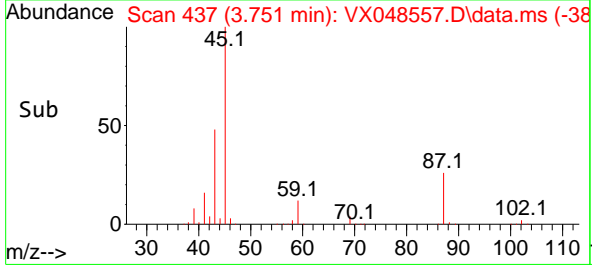


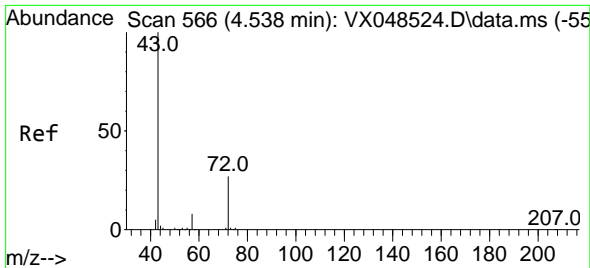
#23
 Vinyl Acetate
 Concen: 17.693 ug/l
 RT: 3.751 min Scan# 437
 Delta R.T. 0.036 min
 Lab File: VX048557.D
 Acq: 11 Nov 2025 12:24



Tgt Ion: 43 Resp: 142178

Ion	Ratio	Lower	Upper
43	100		
86	0.3	9.0	13.6#

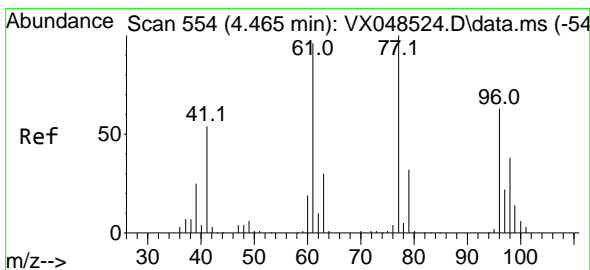
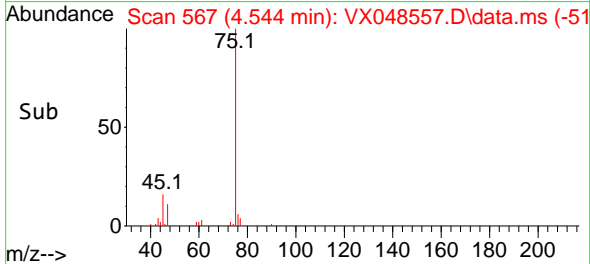
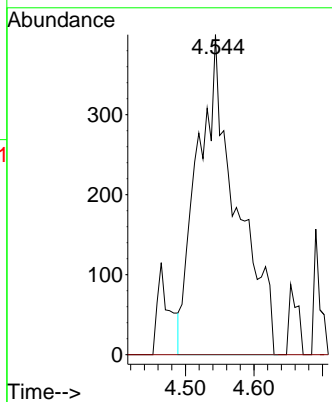
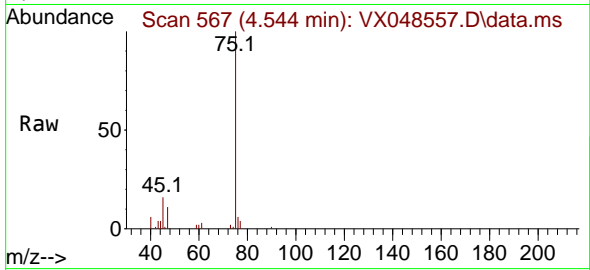




#25
 2-Butanone
 Concen: 0.725 ug/l
 RT: 4.544 min Scan# 50
 Delta R.T. 0.006 min
 Lab File: VX048557.D
 Acq: 11 Nov 2025 12:24

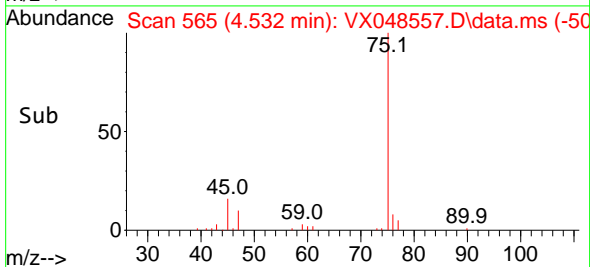
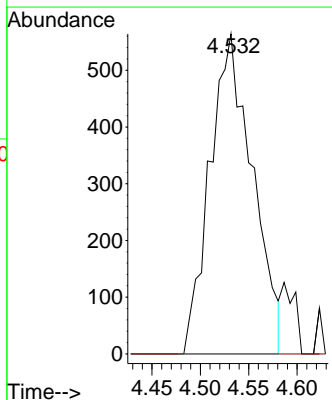
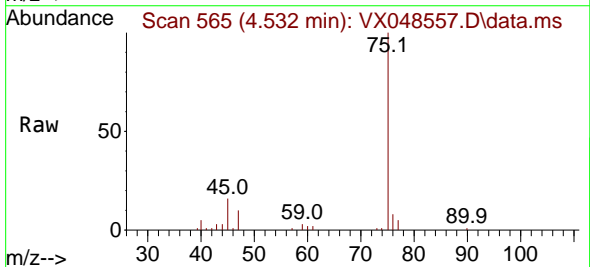
Instrument :
 MSVOA_X
 ClientSampleId :
 MW-12DL

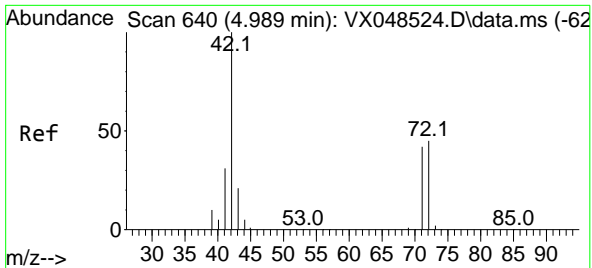
Tgt Ion: 43 Resp: 1560
 Ion Ratio Lower Upper
 43 100
 72 0.0 21.5 32.3#



#26
 2,2-Dichloropropane
 Concen: 0.402 ug/l
 RT: 4.532 min Scan# 565
 Delta R.T. 0.067 min
 Lab File: VX048557.D
 Acq: 11 Nov 2025 12:24

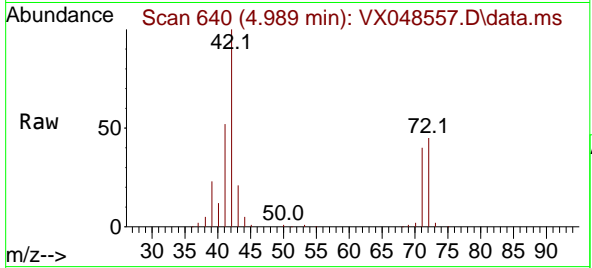
Tgt Ion: 77 Resp: 1726
 Ion Ratio Lower Upper
 77 100
 97 0.0 11.7 35.1#





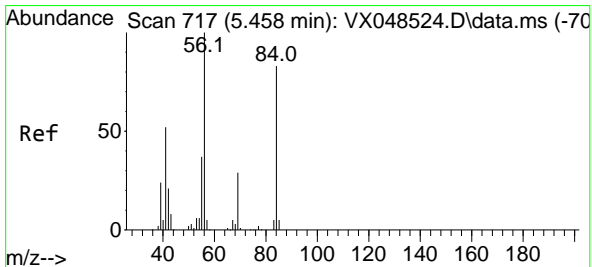
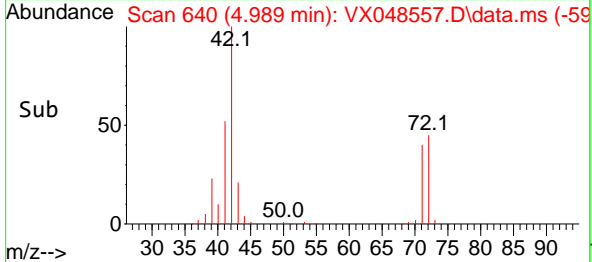
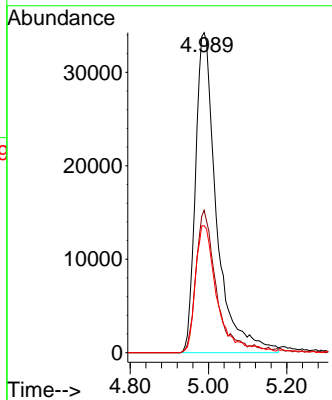
#29
 Tetrahydrofuran
 Concen: 83.610 ug/l
 RT: 4.989 min Scan# 64
 Delta R.T. -0.000 min
 Lab File: VX048557.D
 Acq: 11 Nov 2025 12:24

Instrument :
 MSVOA_X
 ClientSampleId :
 MW-12DL



Tgt Ion: 42 Resp: 128276

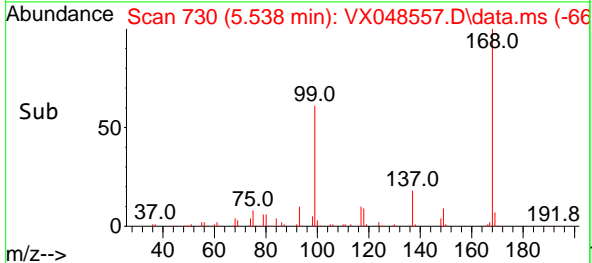
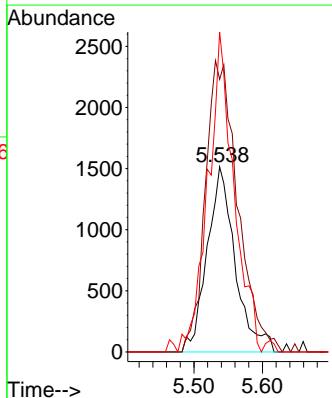
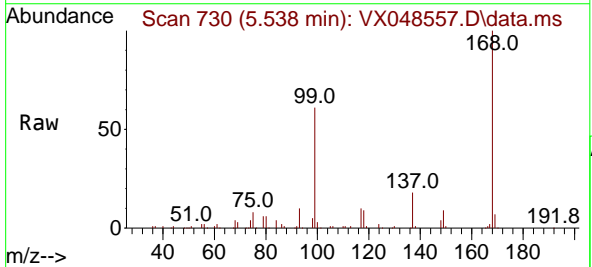
Ion	Ratio	Lower	Upper
42	100		
72	42.5	36.3	54.5
71	39.7	34.1	51.1

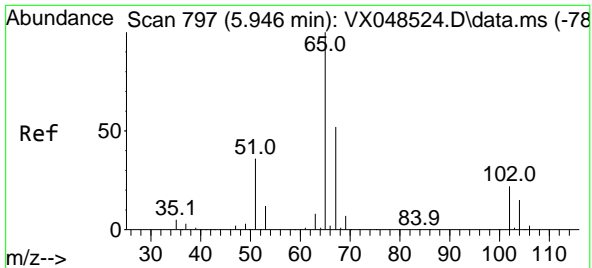


#31
 Cyclohexane
 Concen: 1.044 ug/l
 RT: 5.538 min Scan# 730
 Delta R.T. 0.079 min
 Lab File: VX048557.D
 Acq: 11 Nov 2025 12:24

Tgt Ion: 56 Resp: 4306

Ion	Ratio	Lower	Upper
56	100		
69	147.3	23.4	35.2#
84	172.9	66.3	99.5#

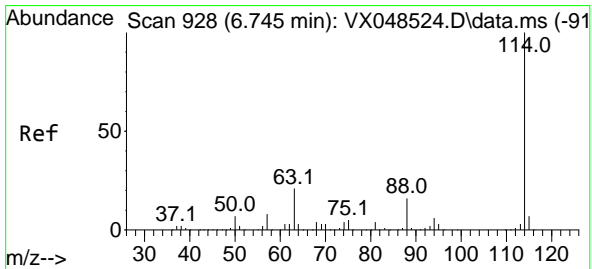
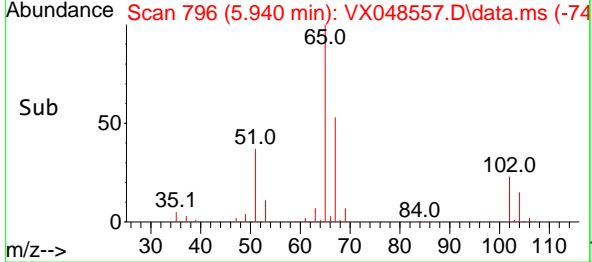
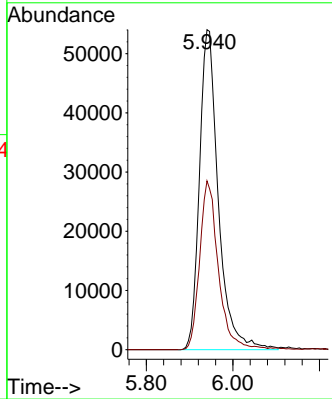
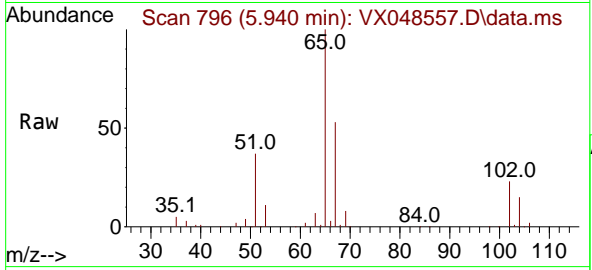




#33
 1,2-Dichloroethane-d4
 Concen: 53.191 ug/l
 RT: 5.940 min Scan# 797
 Delta R.T. -0.006 min
 Lab File: VX048557.D
 Acq: 11 Nov 2025 12:24

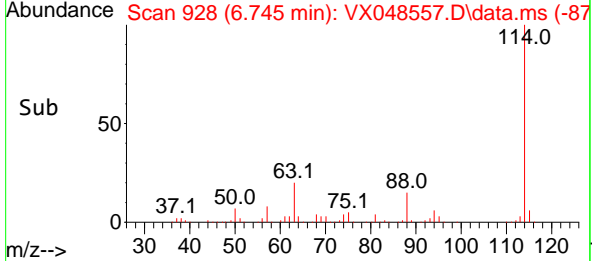
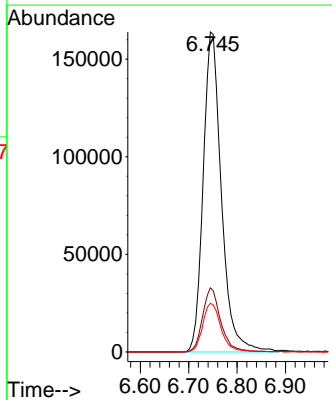
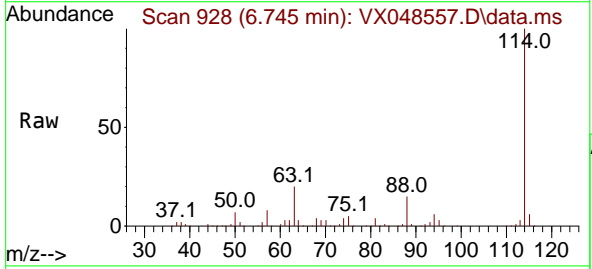
Instrument : MSVOA_X
 ClientSampleId : MW-12DL

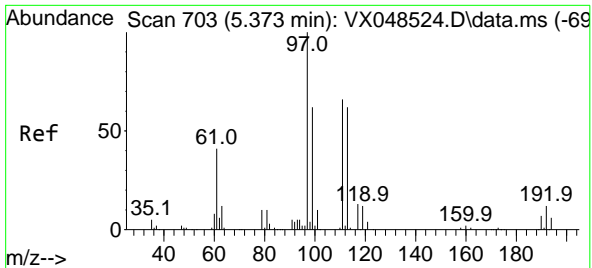
Tgt Ion: 65 Resp: 163400
 Ion Ratio Lower Upper
 65 100
 67 52.3 0.0 106.2



#34
 1,4-Difluorobenzene
 Concen: 50.000 ug/l
 RT: 6.745 min Scan# 928
 Delta R.T. -0.000 min
 Lab File: VX048557.D
 Acq: 11 Nov 2025 12:24

Tgt Ion:114 Resp: 428617
 Ion Ratio Lower Upper
 114 100
 63 20.1 0.0 41.2
 88 15.2 0.0 32.2



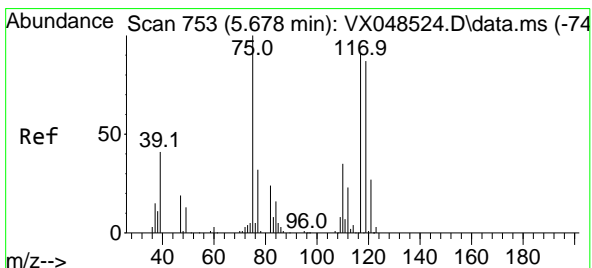
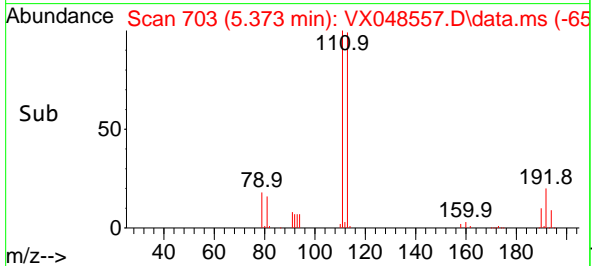
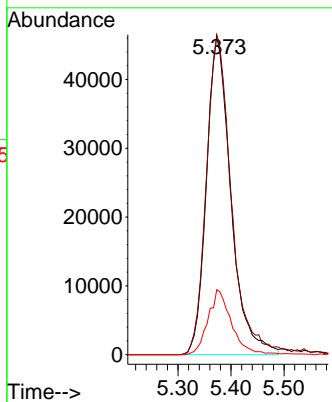
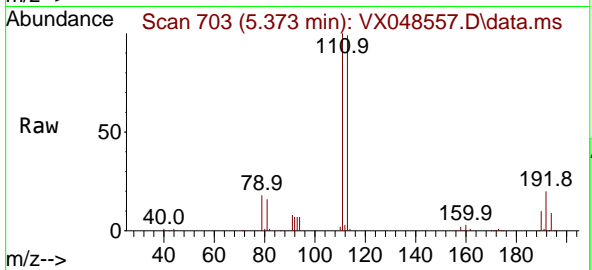


#35
 Dibromofluoromethane
 Concen: 45.721 ug/l
 RT: 5.373 min Scan# 703
 Delta R.T. -0.000 min
 Lab File: VX048557.D
 Acq: 11 Nov 2025 12:24

Instrument : MSVOA_X
 ClientSampleId : MW-12DL

Tgt Ion:113 Resp: 148320

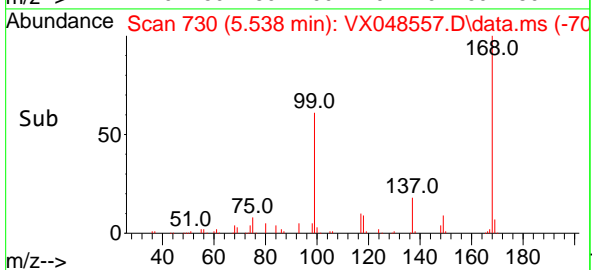
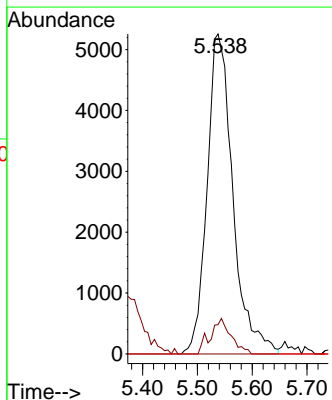
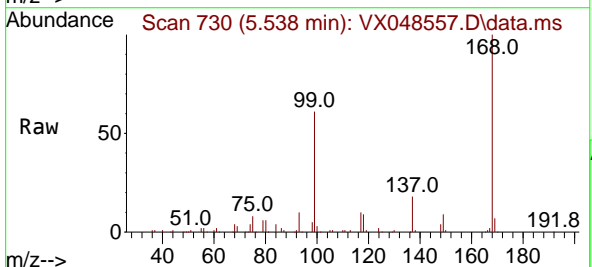
Ion	Ratio	Lower	Upper
113	100		
111	103.3	81.9	122.9
192	19.6	15.8	23.6

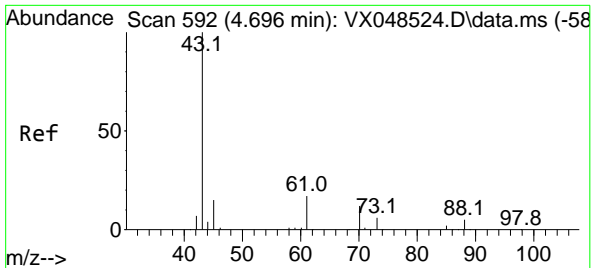


#36
 1,1-Dichloropropene
 Concen: 3.952 ug/l
 RT: 5.538 min Scan# 730
 Delta R.T. -0.140 min
 Lab File: VX048557.D
 Acq: 11 Nov 2025 12:24

Tgt Ion: 75 Resp: 17167

Ion	Ratio	Lower	Upper
75	100		
110	8.9	18.4	55.4#
77	0.0	24.6	37.0#

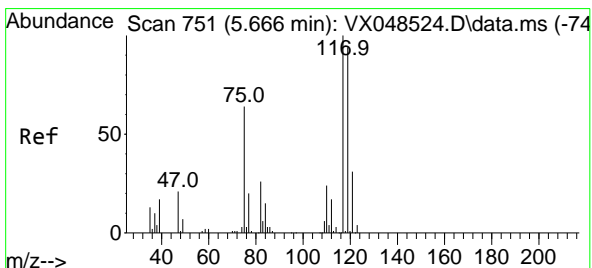
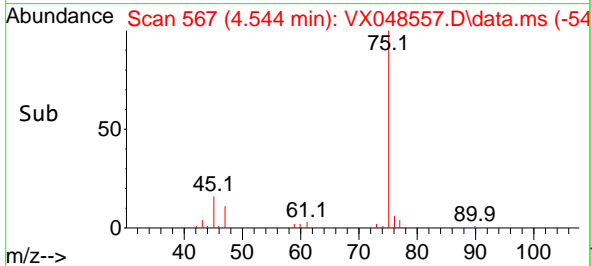
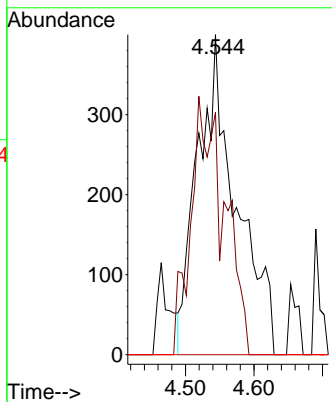
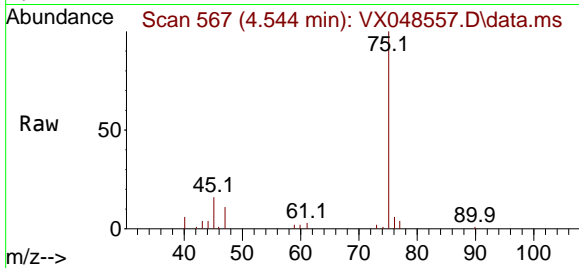




#37
 Ethyl Acetate
 Concen: 0.255 ug/l
 RT: 4.544 min Scan# 509
 Delta R.T. -0.153 min
 Lab File: VX048557.D
 Acq: 11 Nov 2025 12:24

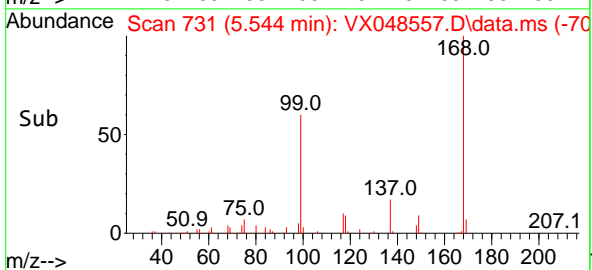
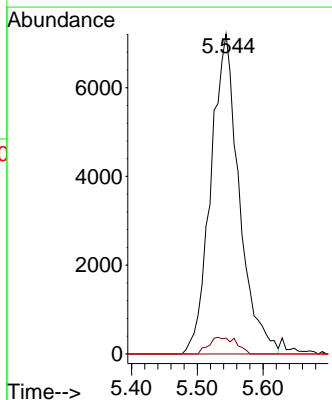
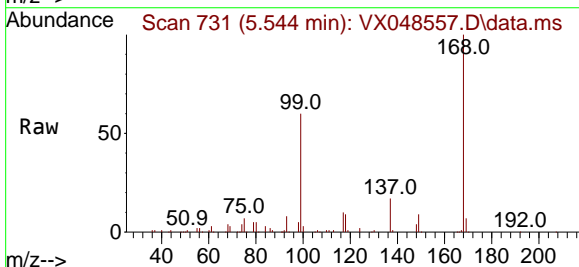
Instrument : MSVOA_X
 ClientSampleId : MW-12DL

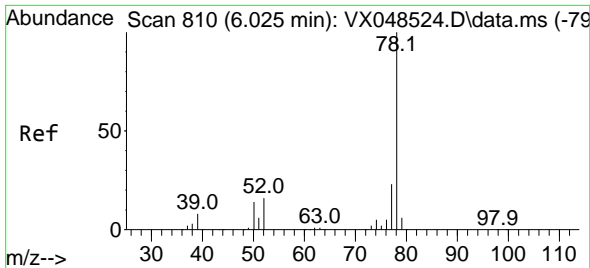
Tgt Ion	Resp	Ion Ratio	Lower	Upper
43	1560	100		
61	0.0	9.7	14.5#	
70	0.0	7.7	11.5#	



#38
 Carbon Tetrachloride
 Concen: 4.377 ug/l
 RT: 5.544 min Scan# 731
 Delta R.T. -0.122 min
 Lab File: VX048557.D
 Acq: 11 Nov 2025 12:24

Tgt Ion	Resp	Ion Ratio	Lower	Upper
117	21646	100		
119	5.0	74.5	111.7#	
121	0.0	24.8	37.2#	

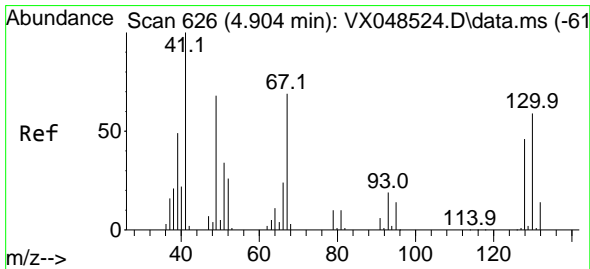
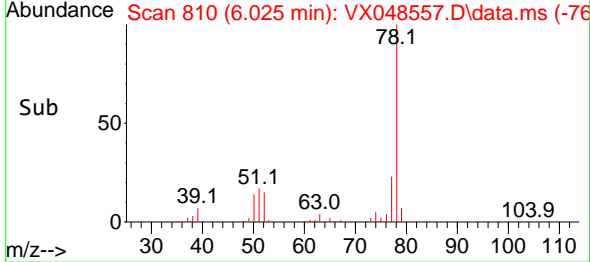
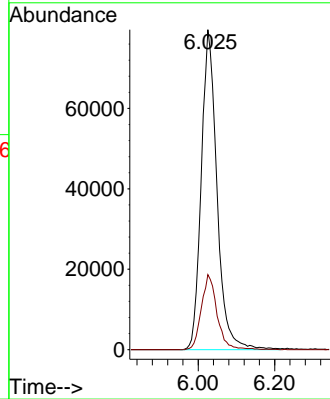
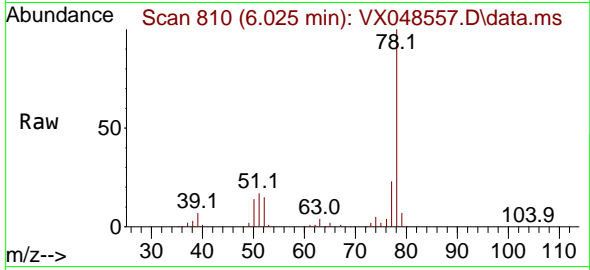




#40
Benzene
Concen: 16.852 ug/l
RT: 6.025 min Scan# 810
Delta R.T. -0.000 min
Lab File: VX048557.D
Acq: 11 Nov 2025 12:24

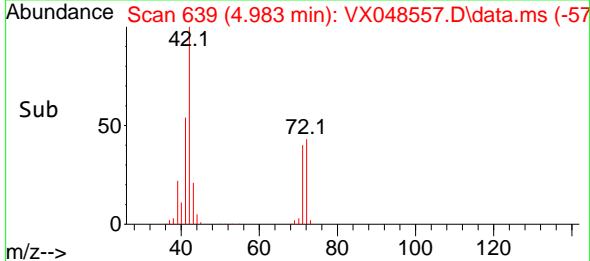
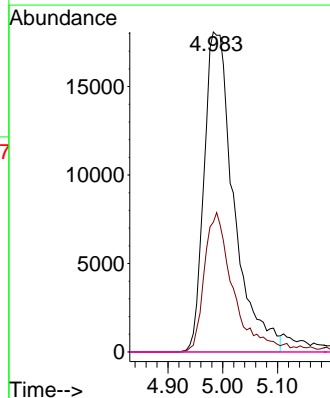
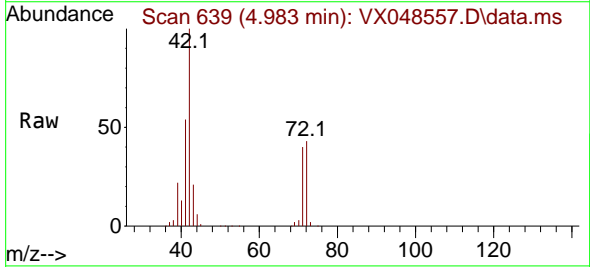
Instrument : MSVOA_X
ClientSampleId : MW-12DL

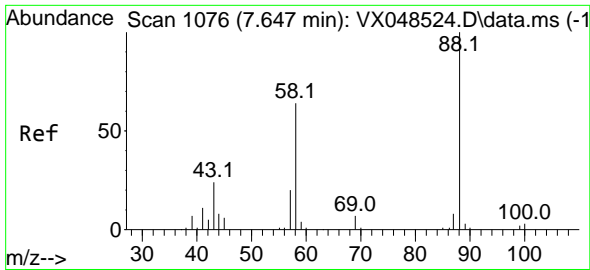
Tgt Ion: 78 Resp: 226911
Ion Ratio Lower Upper
78 100
77 23.4 18.3 27.5



#41
Methacrylonitrile
Concen: 25.365 ug/l
RT: 4.983 min Scan# 639
Delta R.T. 0.079 min
Lab File: VX048557.D
Acq: 11 Nov 2025 12:24

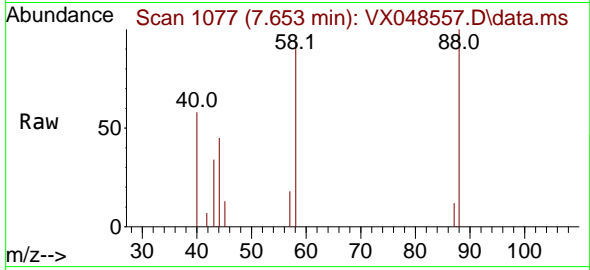
Tgt Ion: 41 Resp: 68208
Ion Ratio Lower Upper
41 100
39 41.7 41.1 61.7
67 0.0 64.2 96.2#
52 0.0 25.6 38.4#





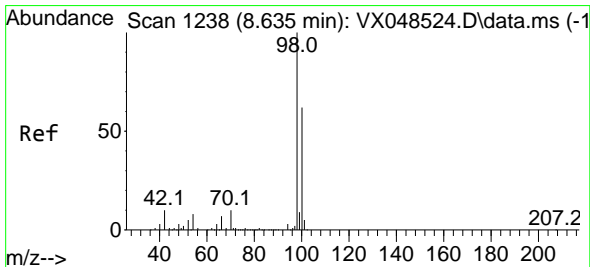
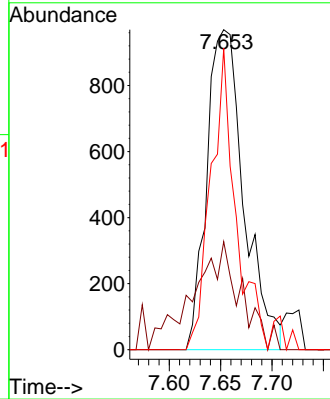
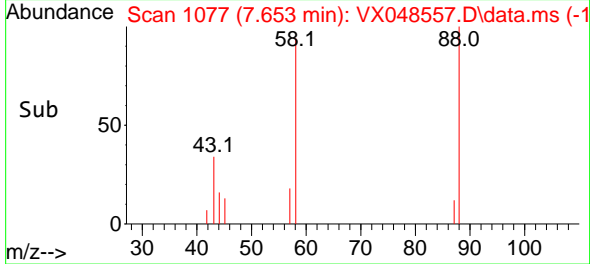
#49
 1,4-Dioxane
 Concen: 41.977 ug/l
 RT: 7.653 min Scan# 1077
 Delta R.T. 0.006 min
 Lab File: VX048557.D
 Acq: 11 Nov 2025 12:24

Instrument : MSVOA_X
 ClientSampleId : MW-12DL

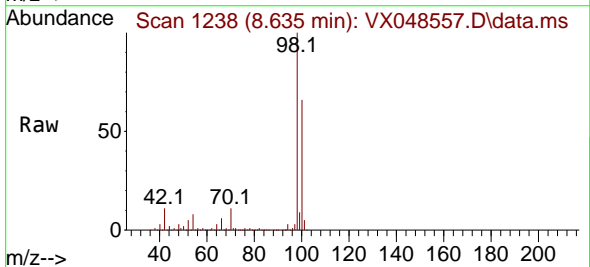


Tgt Ion: 88 Resp: 2444

Ion	Ratio	Lower	Upper
88	100		
43	24.6	25.1	37.7#
58	62.8	56.7	85.1

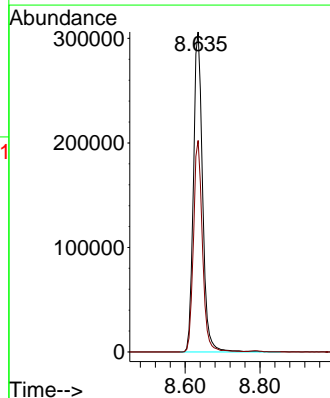
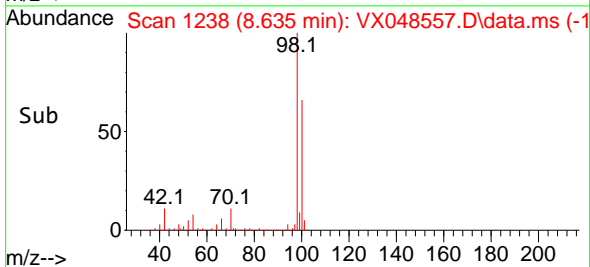


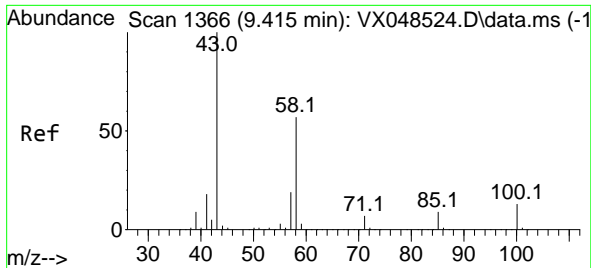
#50
 Toluene-d8
 Concen: 51.419 ug/l
 RT: 8.635 min Scan# 1238
 Delta R.T. -0.000 min
 Lab File: VX048557.D
 Acq: 11 Nov 2025 12:24



Tgt Ion: 98 Resp: 520240

Ion	Ratio	Lower	Upper
98	100		
100	64.9	53.6	80.4

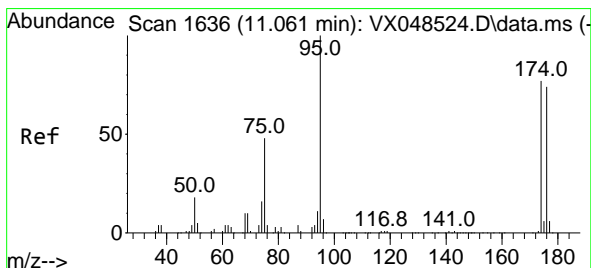
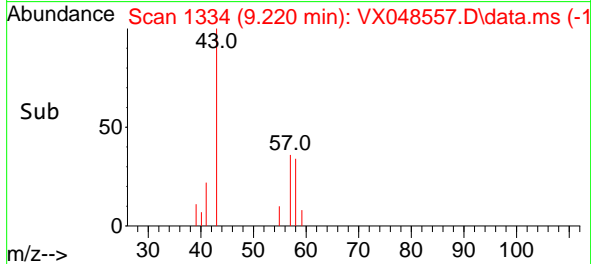
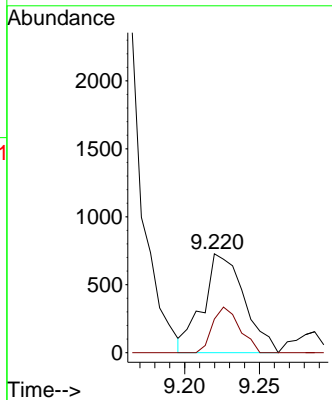
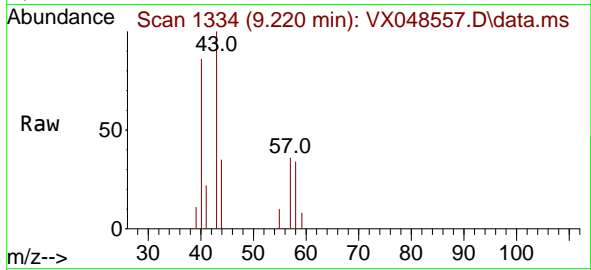




#59
 2-Hexanone
 Concen: 0.382 ug/l
 RT: 9.220 min Scan# 11
 Delta R.T. -0.195 min
 Lab File: VX048557.D
 Acq: 11 Nov 2025 12:24

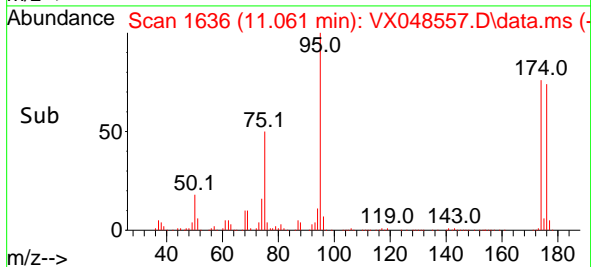
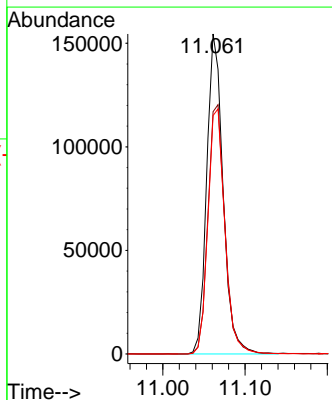
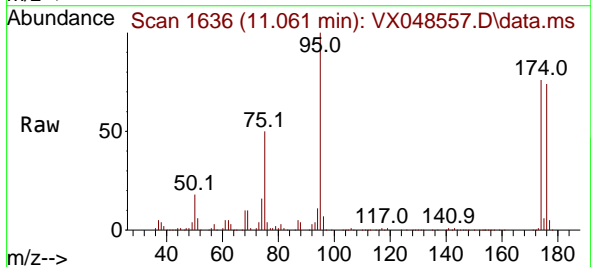
Instrument : MSVOA_X
 ClientSampleId : MW-12DL

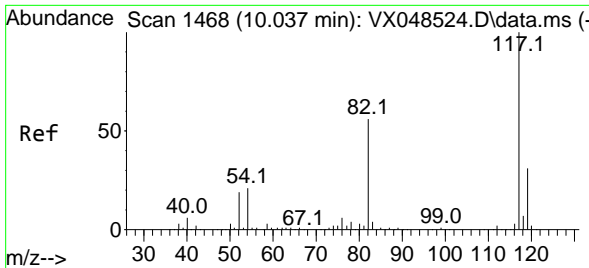
Tgt Ion: 43 Resp: 1392
 Ion Ratio Lower Upper
 43 100
 58 30.5 28.1 84.2



#62
 4-Bromofluorobenzene
 Concen: 56.642 ug/l
 RT: 11.061 min Scan# 1636
 Delta R.T. -0.000 min
 Lab File: VX048557.D
 Acq: 11 Nov 2025 12:24

Tgt Ion: 95 Resp: 213570
 Ion Ratio Lower Upper
 95 100
 174 80.9 0.0 161.8
 176 79.2 0.0 153.6



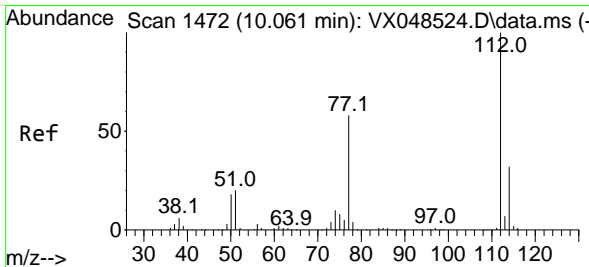
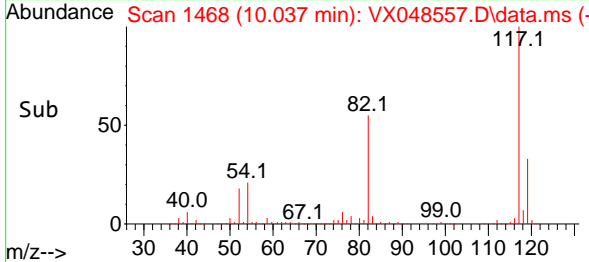
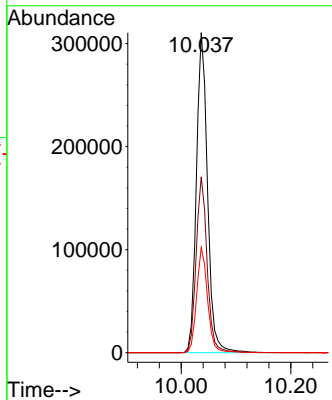
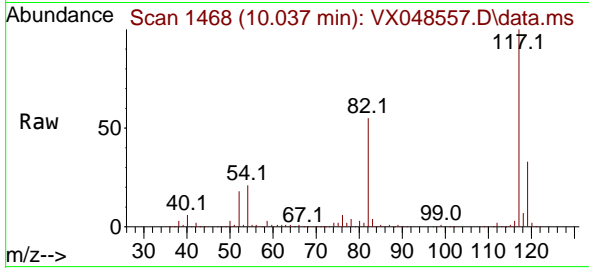


#63
 Chlorobenzene-d5
 Concen: 50.000 ug/l
 RT: 10.037 min Scan# 1468
 Delta R.T. -0.000 min
 Lab File: VX048557.D
 Acq: 11 Nov 2025 12:24

Instrument : MSVOA_X
 ClientSampleId : MW-12DL

Tgt Ion:117 Resp: 439851

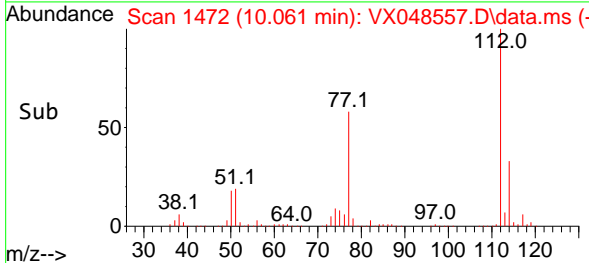
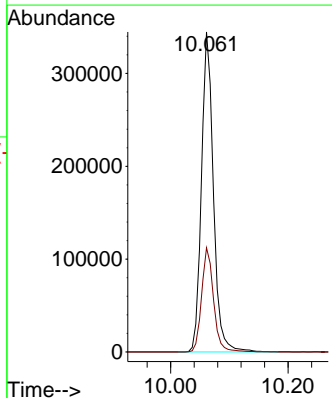
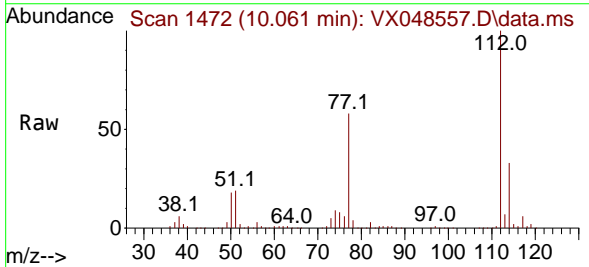
Ion	Ratio	Lower	Upper
117	100		
82	55.0	44.4	66.6
119	32.9	25.1	37.7

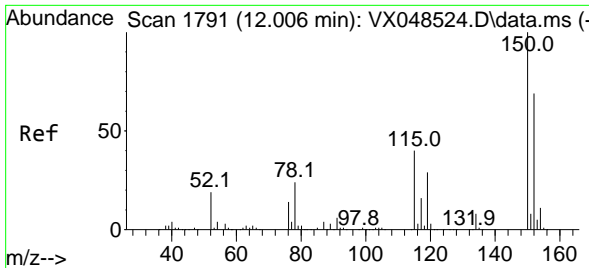


#65
 Chlorobenzene
 Concen: 46.650 ug/l
 RT: 10.061 min Scan# 1472
 Delta R.T. -0.000 min
 Lab File: VX048557.D
 Acq: 11 Nov 2025 12:24

Tgt Ion:112 Resp: 487031

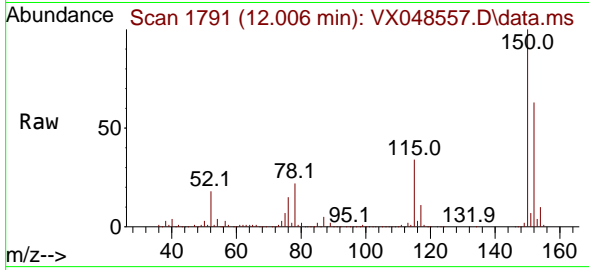
Ion	Ratio	Lower	Upper
112	100		
114	32.6	25.5	38.3



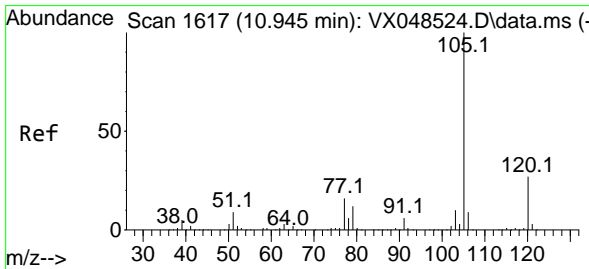
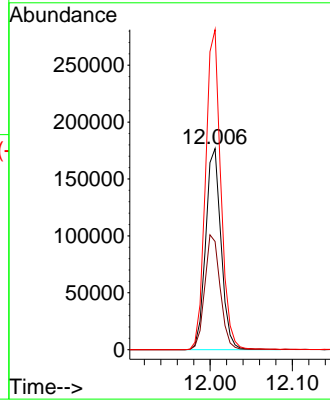
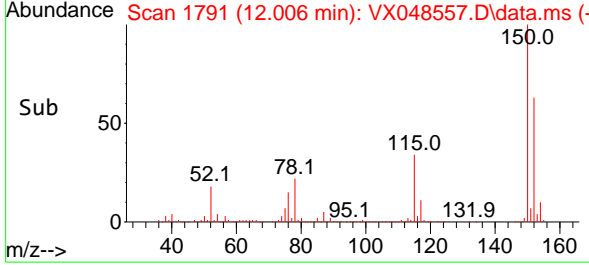


#72
 1,4-Dichlorobenzene-d4
 Concen: 50.000 ug/l
 RT: 12.006 min Scan# 1791
 Delta R.T. -0.000 min
 Lab File: VX048557.D
 Acq: 11 Nov 2025 12:24

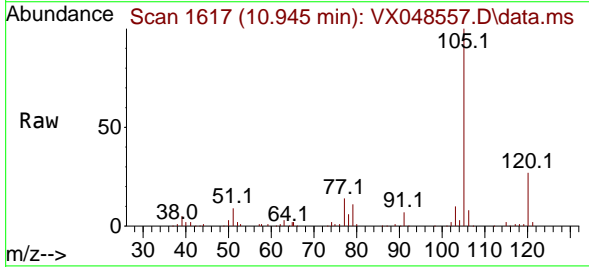
Instrument : MSVOA_X
 ClientSampleId : MW-12DL



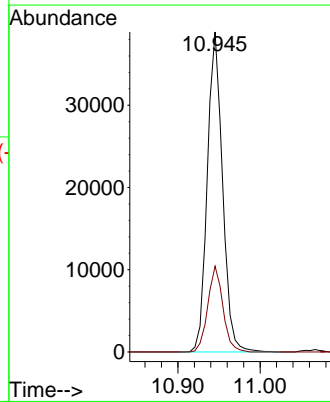
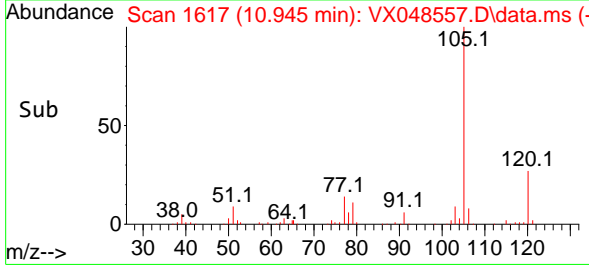
Tgt Ion:152 Resp: 230176
 Ion Ratio Lower Upper
 152 100
 115 57.2 39.2 117.6
 150 157.4 0.0 347.0

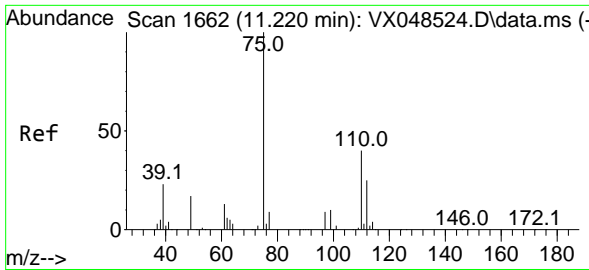


#73
 Isopropylbenzene
 Concen: 2.993 ug/l
 RT: 10.945 min Scan# 1617
 Delta R.T. -0.000 min
 Lab File: VX048557.D
 Acq: 11 Nov 2025 12:24



Tgt Ion:105 Resp: 50007
 Ion Ratio Lower Upper
 105 100
 120 26.7 13.6 40.7

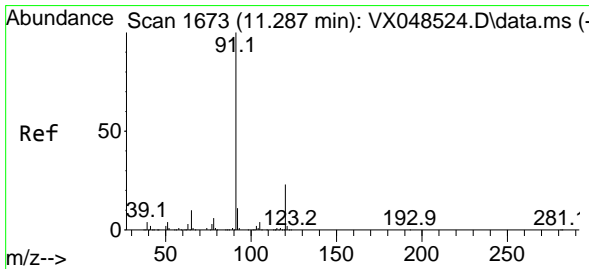
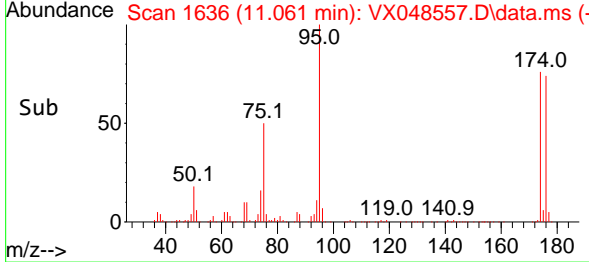
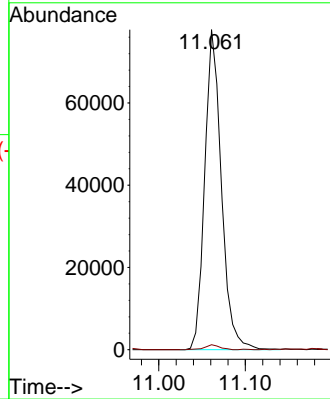
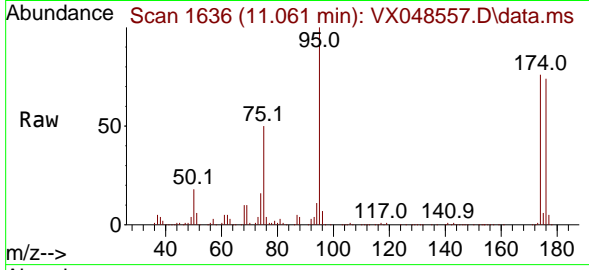




#76
 1,2,3-Trichloropropane
 Concen: 18.780 ug/l
 RT: 11.061 min Scan# 1636
 Delta R.T. -0.159 min
 Lab File: VX048557.D
 Acq: 11 Nov 2025 12:24

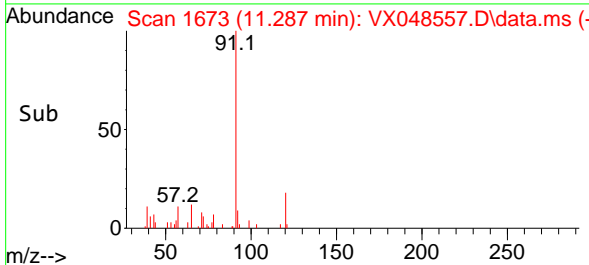
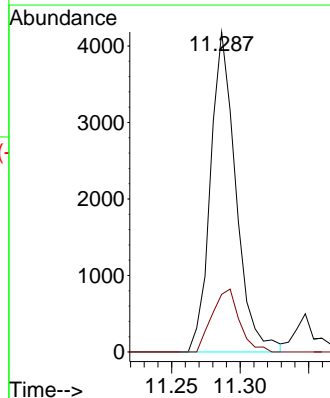
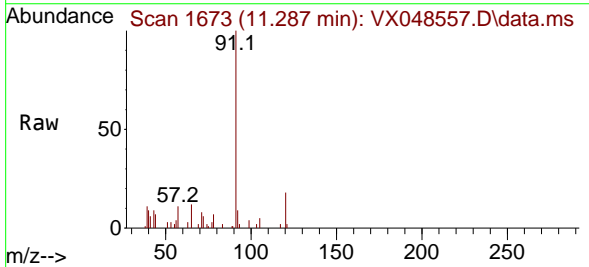
Instrument : MSVOA_X
 ClientSampleId : MW-12DL

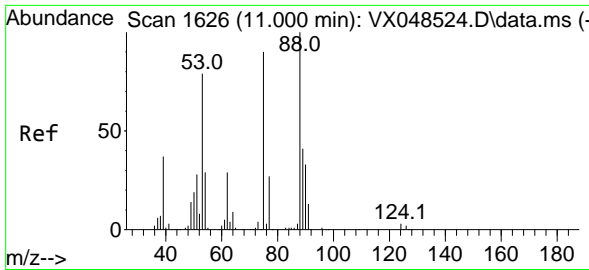
Tgt Ion: 75 Resp: 104138
 Ion Ratio Lower Upper
 75 100
 77 1.4 24.3 72.8#



#78
 n-propylbenzene
 Concen: 0.274 ug/l
 RT: 11.287 min Scan# 1673
 Delta R.T. -0.000 min
 Lab File: VX048557.D
 Acq: 11 Nov 2025 12:24

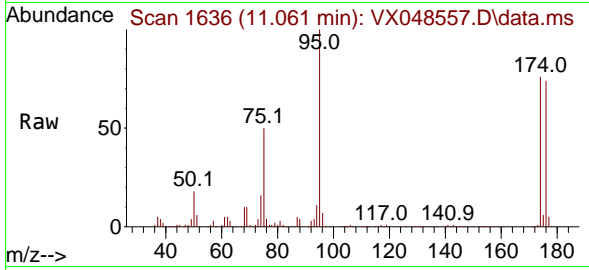
Tgt Ion: 91 Resp: 5386
 Ion Ratio Lower Upper
 91 100
 120 21.1 11.6 34.8



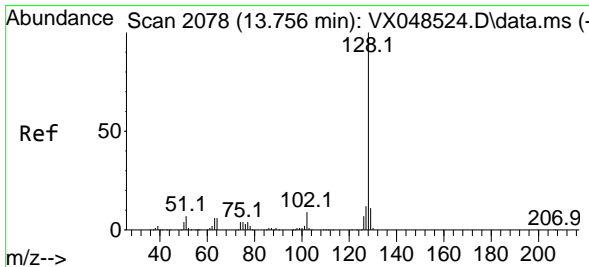
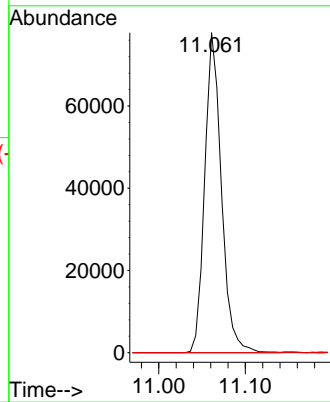
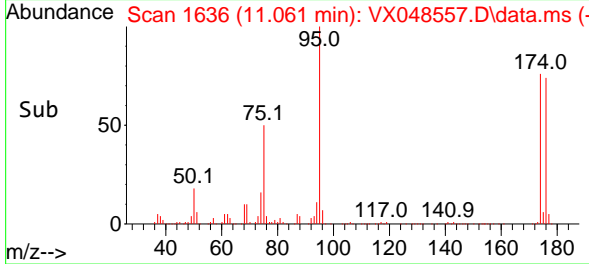


#81
 trans-1,4-Dichloro-2-butene
 Concen: 53.716 ug/l
 RT: 11.061 min Scan# 10
 Delta R.T. 0.061 min
 Lab File: VX048557.D
 Acq: 11 Nov 2025 12:24

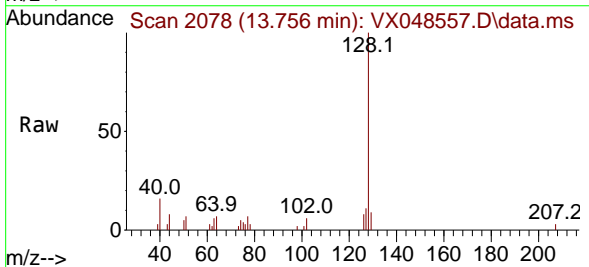
Instrument :
 MSVOA_X
 ClientSampleId :
 MW-12DL



Tgt Ion: 75 Resp: 104138
 Ion Ratio Lower Upper
 75 100
 53 0.0 72.4 108.6#
 89 0.0 43.6 65.4#



#95
 Naphthalene
 Concen: 0.277 ug/l
 RT: 13.756 min Scan# 2078
 Delta R.T. -0.000 min
 Lab File: VX048557.D
 Acq: 11 Nov 2025 12:24



Tgt Ion: 128 Resp: 4600
 Ion Ratio Lower Upper
 128 100
 127 12.1 10.1 15.1
 129 10.0 8.7 13.1

