

Data Path : Z:\voasrv\HPCHEM1\MSVOA_X\Data\VX111125\
 Data File : VX048558.D
 Acq On : 11 Nov 2025 12:45
 Operator : JC/MD
 Sample : Q3574-01 200X
 Misc : 5.0mL/MSVOA_X/WATER
 ALS Vial : 11 Sample Multiplier: 1

Instrument :
 MSVOA_X
 ClientSampleId :
 304641-01 Liquid

Quant Time: Nov 12 04:45:11 2025
 Quant Method : Z:\voasrv\HPCHEM1\MSVOA_X\Method\82X110725W.M
 Quant Title : SW846 8260
 QLast Update : Sat Nov 08 05:08:11 2025
 Response via : Initial Calibration

Compound	R.T.	QIon	Response	Conc	Units	Dev(Min)

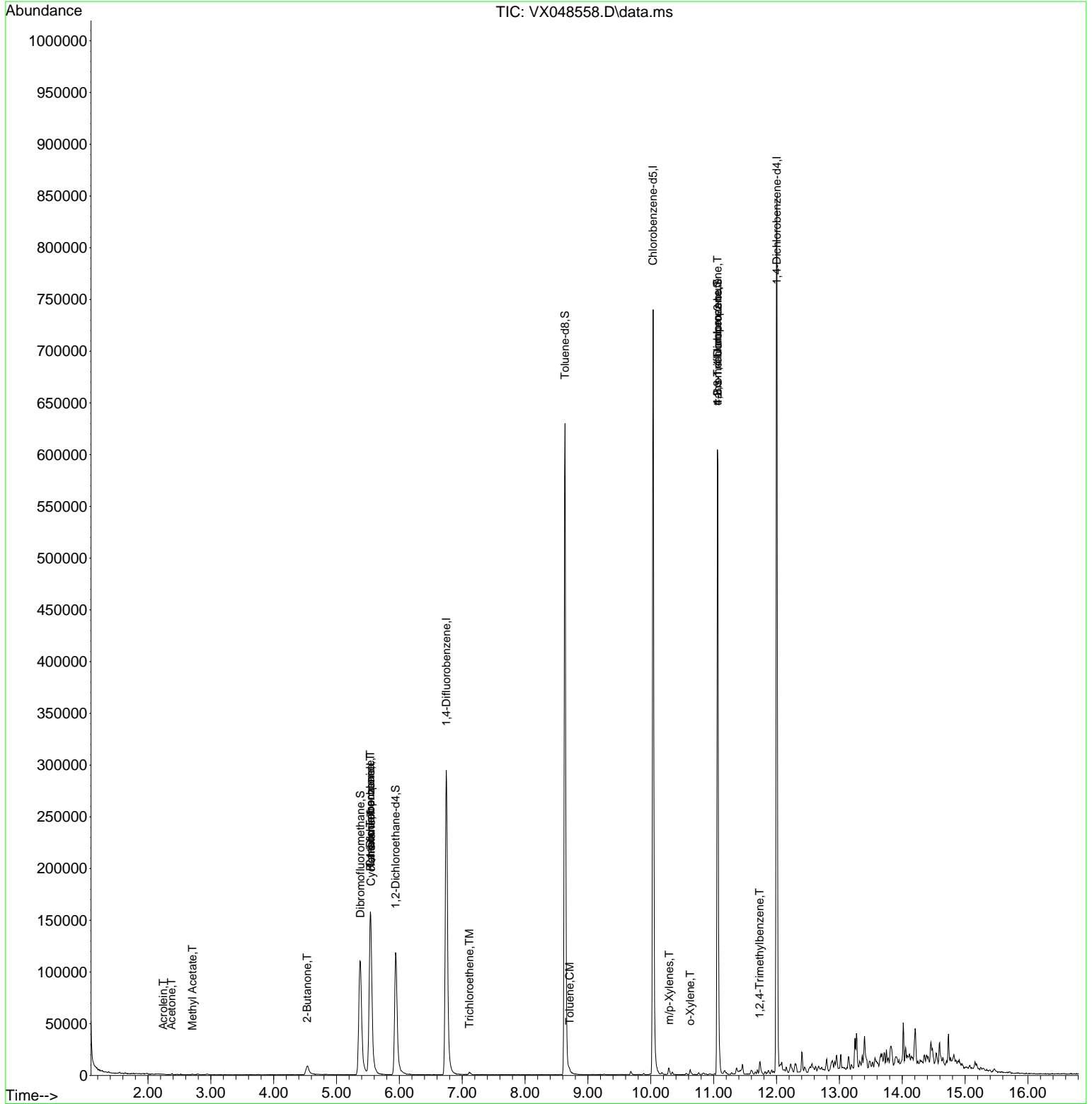
Internal Standards						
1) Pentafluorobenzene	5.544	168	167862	50.000	ug/l	0.00
34) 1,4-Difluorobenzene	6.745	114	340201	50.000	ug/l	0.00
63) Chlorobenzene-d5	10.037	117	363054	50.000	ug/l	0.00
72) 1,4-Dichlorobenzene-d4	12.006	152	194663	50.000	ug/l	0.00
System Monitoring Compounds						
33) 1,2-Dichloroethane-d4	5.940	65	127438	54.483	ug/l	0.00
Spiked Amount	50.000	Range 78 - 117	Recovery	=	108.960%	
35) Dibromofluoromethane	5.379	113	115536	44.871	ug/l	0.00
Spiked Amount	50.000	Range 75 - 124	Recovery	=	89.740%	
50) Toluene-d8	8.635	98	413001	51.429	ug/l	0.00
Spiked Amount	50.000	Range 92 - 112	Recovery	=	102.860%	
62) 4-Bromofluorobenzene	11.061	95	176457	58.962	ug/l	0.00
Spiked Amount	50.000	Range 83 - 123	Recovery	=	117.920%	
Target Compounds						
						Qvalue
13) Acrolein	2.239	56	19	0.296	ug/l #	1
16) Acetone	2.374	43	973	0.879	ug/l #	75
18) Methyl Acetate	2.709	43	773	0.254	ug/l #	80
25) 2-Butanone	4.532	43	466	0.285	ug/l #	48
31) Cyclohexane	5.550	56	3345	1.065	ug/l #	1
36) 1,1-Dichloropropene	5.538	75	12669	3.674	ug/l #	48
38) Carbon Tetrachloride	5.538	117	17096	4.356	ug/l #	16
44) Trichloroethene	7.117	130	985	0.386	ug/l	98
52) Toluene	8.708	92	1290	0.229	ug/l	98
68) m/p-Xylenes	10.293	106	1757	0.322	ug/l	98
69) o-Xylene	10.628	106	1179	0.221	ug/l	98
76) 1,2,3-Trichloropropane	11.061	75	86638	18.474	ug/l #	30
81) trans-1,4-Dichloro-2-b...	11.061	75	86638	52.842	ug/l #	12
84) 1,2,4-Trimethylbenzene	11.732	105	5565	0.479	ug/l	91

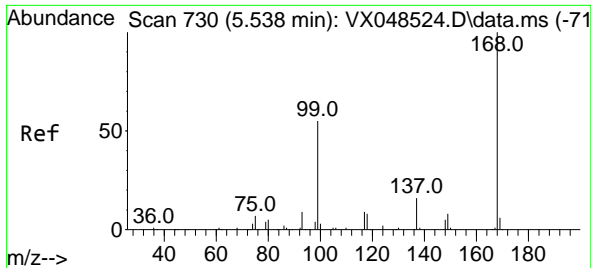
(#) = qualifier out of range (m) = manual integration (+) = signals summed

Data Path : Z:\voasrv\HPCHEM1\MSVOA_X\Data\VX111125\
 Data File : VX048558.D
 Acq On : 11 Nov 2025 12:45
 Operator : JC/MD
 Sample : Q3574-01 200X
 Misc : 5.0mL/MSVOA_X/WATER
 ALS Vial : 11 Sample Multiplier: 1

Instrument :
 MSVOA_X
 ClientSampleId :
 304641-01 Liquid

Quant Time: Nov 12 04:45:11 2025
 Quant Method : Z:\voasrv\HPCHEM1\MSVOA_X\Method\82X110725W.M
 Quant Title : SW846 8260
 QLast Update : Sat Nov 08 05:08:11 2025
 Response via : Initial Calibration

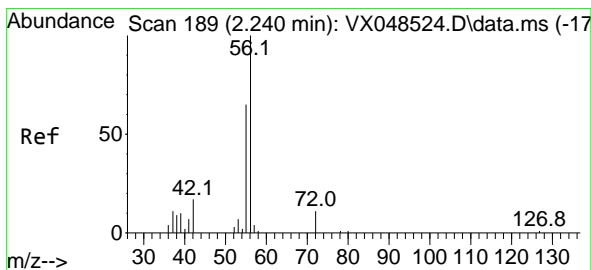
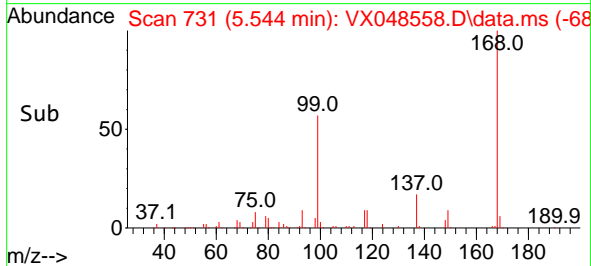
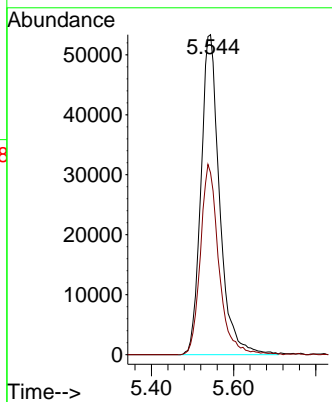
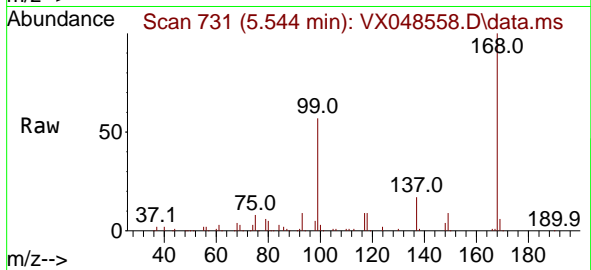




#1
 Pentafluorobenzene
 Concen: 50.000 ug/l
 RT: 5.544 min Scan# 71
 Delta R.T. 0.006 min
 Lab File: VX048558.D
 Acq: 11 Nov 2025 12:45

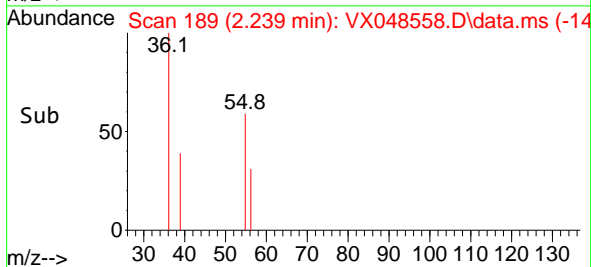
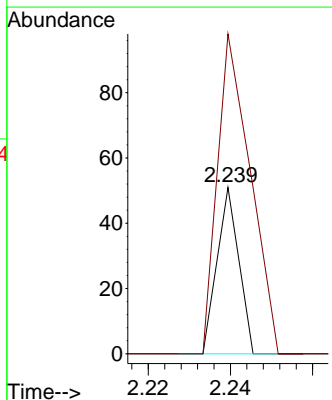
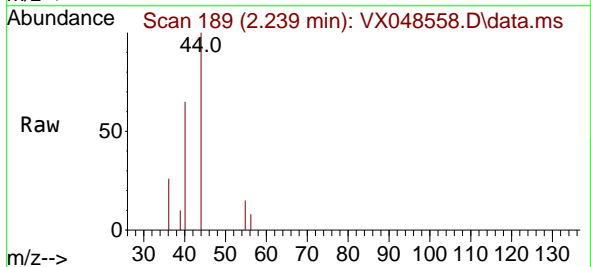
Instrument :
 MSVOA_X
 ClientSampleId :
 304641-01 Liquid

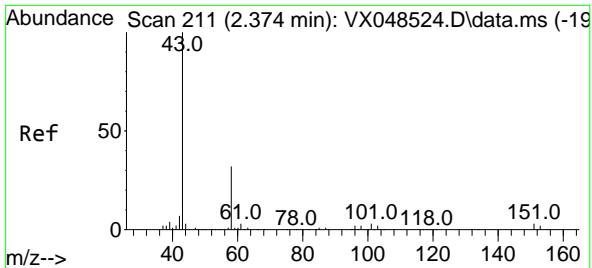
Tgt Ion:168 Resp: 167862
 Ion Ratio Lower Upper
 168 100
 99 56.9 45.2 67.8



#13
 Acrolein
 Concen: 0.296 ug/l
 RT: 2.239 min Scan# 189
 Delta R.T. -0.000 min
 Lab File: VX048558.D
 Acq: 11 Nov 2025 12:45

Tgt Ion: 56 Resp: 19
 Ion Ratio Lower Upper
 56 100
 55 284.2 54.9 82.3#

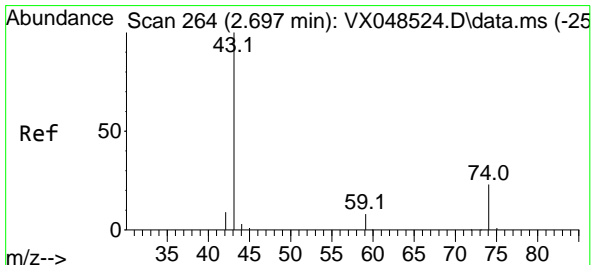
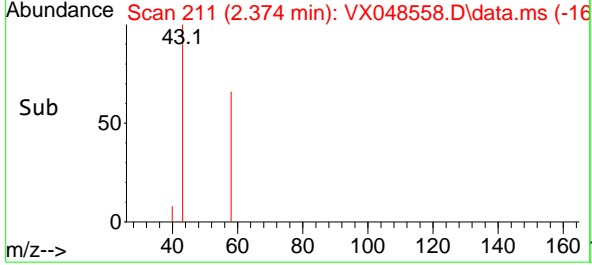
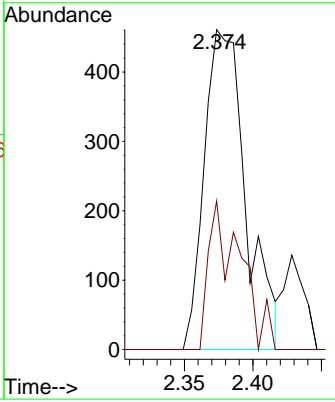
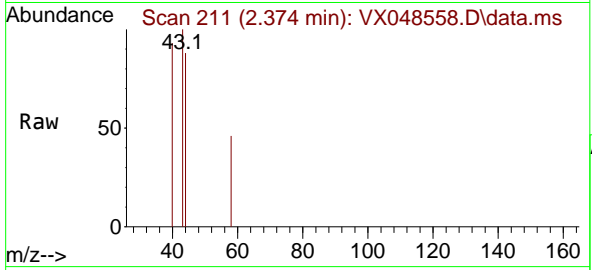




#16
 Acetone
 Concen: 0.879 ug/l
 RT: 2.374 min Scan# 211
 Delta R.T. -0.000 min
 Lab File: VX048558.D
 Acq: 11 Nov 2025 12:45

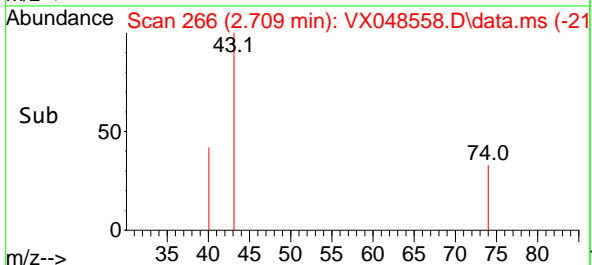
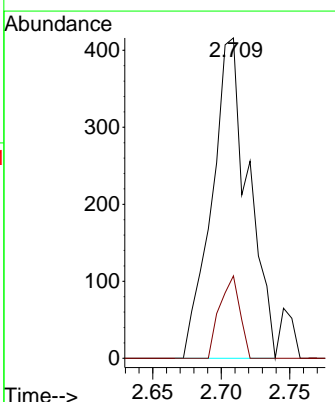
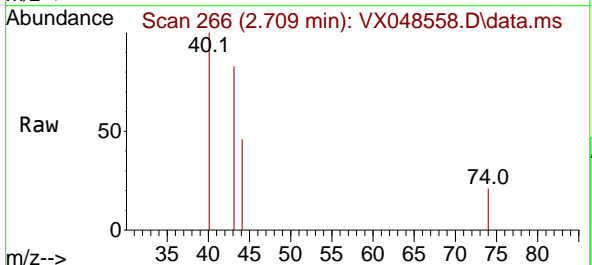
Instrument : MSVOA_X
 ClientSampleId : 304641-01 Liquid

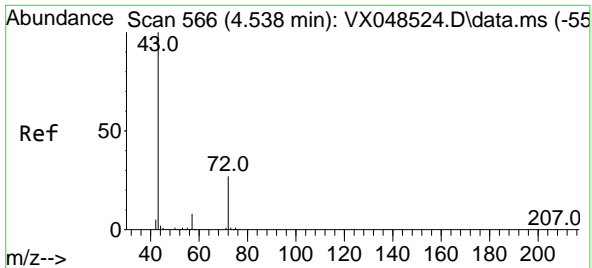
Tgt Ion: 43 Resp: 973
 Ion Ratio Lower Upper
 43 100
 58 46.4 25.8 38.6#



#18
 Methyl Acetate
 Concen: 0.254 ug/l
 RT: 2.709 min Scan# 266
 Delta R.T. 0.012 min
 Lab File: VX048558.D
 Acq: 11 Nov 2025 12:45

Tgt Ion: 43 Resp: 773
 Ion Ratio Lower Upper
 43 100
 74 14.2 19.1 28.7#

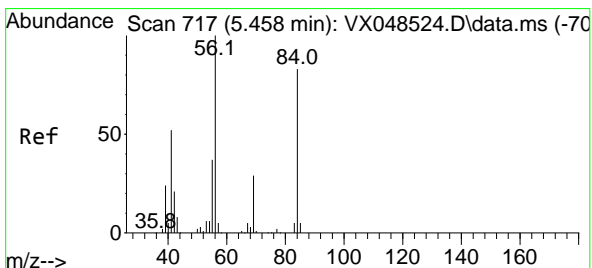
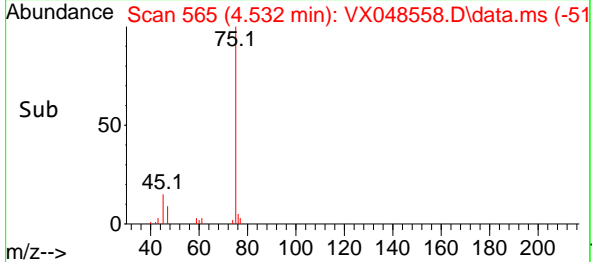
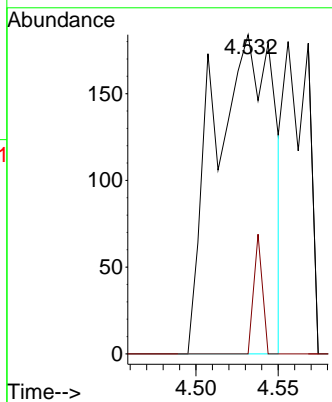
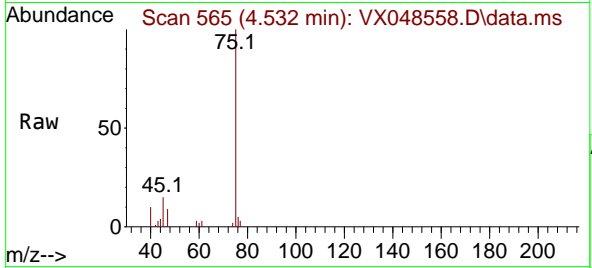




#25
 2-Butanone
 Concen: 0.285 ug/l
 RT: 4.532 min Scan# 50
 Delta R.T. -0.006 min
 Lab File: VX048558.D
 Acq: 11 Nov 2025 12:45

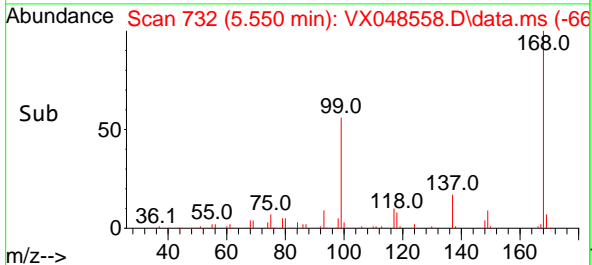
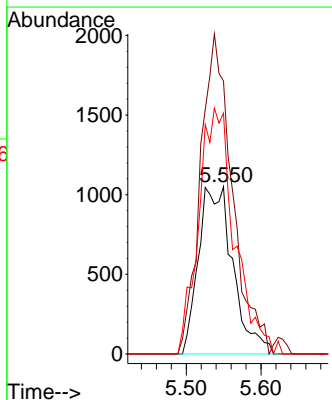
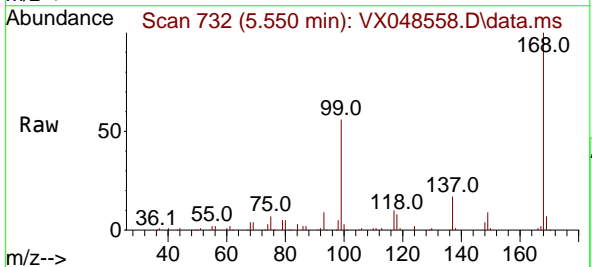
Instrument : MSVOA_X
 ClientSampleId : 304641-01 Liquid

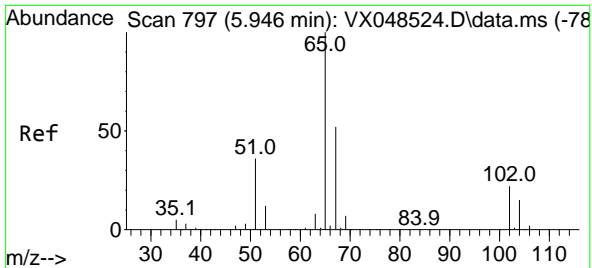
Tgt Ion: 43 Resp: 466
 Ion Ratio Lower Upper
 43 100
 72 0.0 21.5 32.3#



#31
 Cyclohexane
 Concen: 1.065 ug/l
 RT: 5.550 min Scan# 732
 Delta R.T. 0.091 min
 Lab File: VX048558.D
 Acq: 11 Nov 2025 12:45

Tgt Ion: 56 Resp: 3345
 Ion Ratio Lower Upper
 56 100
 69 163.2 23.4 35.2#
 84 144.0 66.3 99.5#

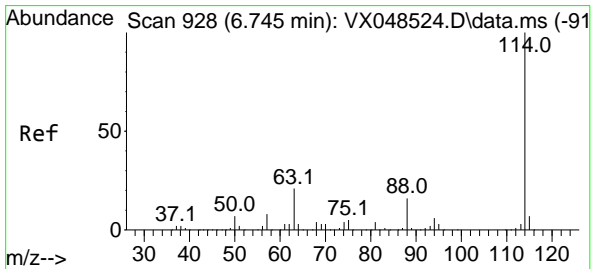
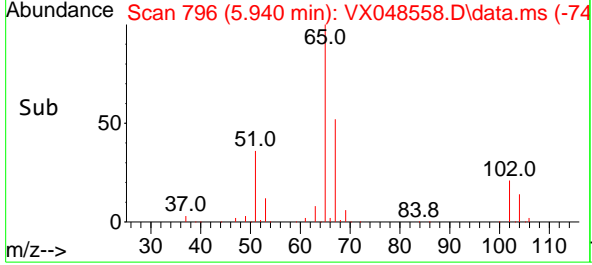
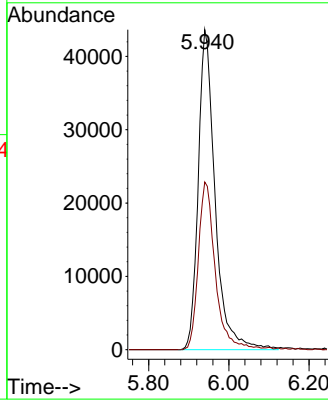
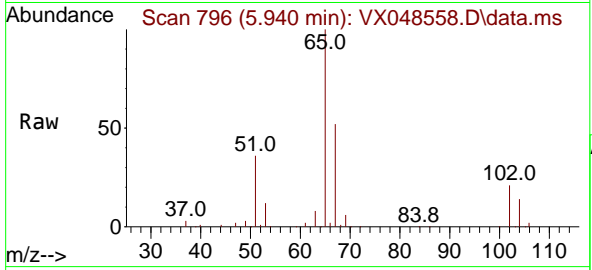




#33
 1,2-Dichloroethane-d4
 Concen: 54.483 ug/l
 RT: 5.940 min Scan# 797
 Delta R.T. -0.006 min
 Lab File: VX048558.D
 Acq: 11 Nov 2025 12:45

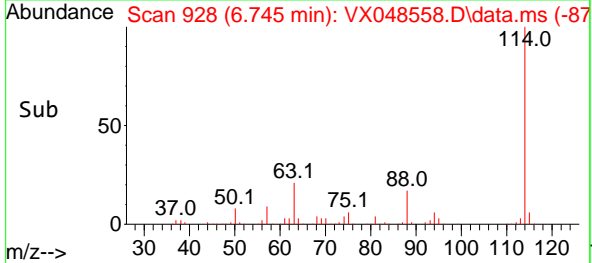
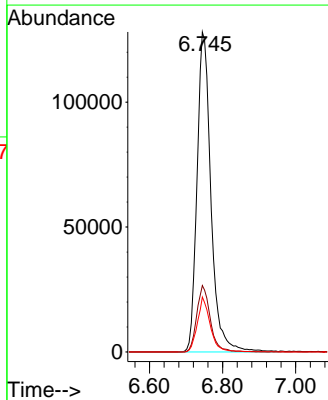
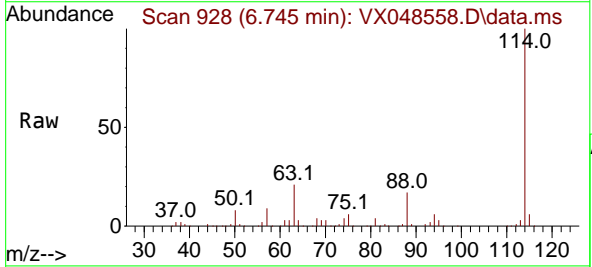
Instrument : MSVOA_X
 ClientSampleId : 304641-01 Liquid

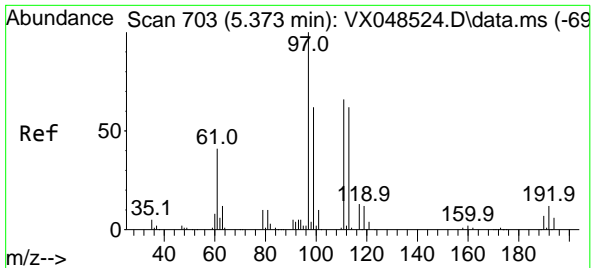
Tgt Ion: 65 Resp: 127438
 Ion Ratio Lower Upper
 65 100
 67 52.7 0.0 106.2



#34
 1,4-Difluorobenzene
 Concen: 50.000 ug/l
 RT: 6.745 min Scan# 928
 Delta R.T. -0.000 min
 Lab File: VX048558.D
 Acq: 11 Nov 2025 12:45

Tgt Ion: 114 Resp: 340201
 Ion Ratio Lower Upper
 114 100
 63 20.8 0.0 41.2
 88 17.2 0.0 32.2

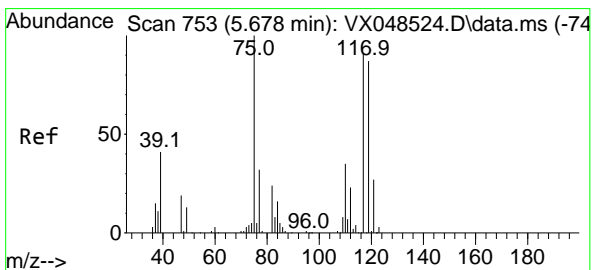
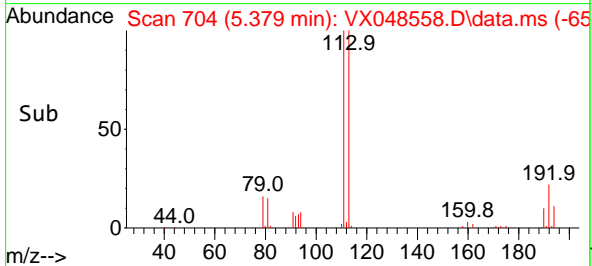
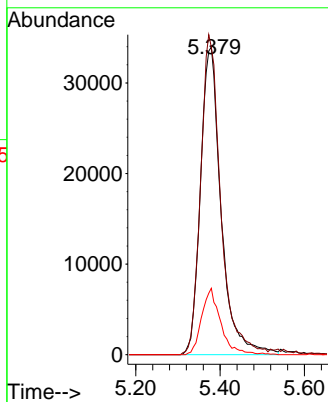
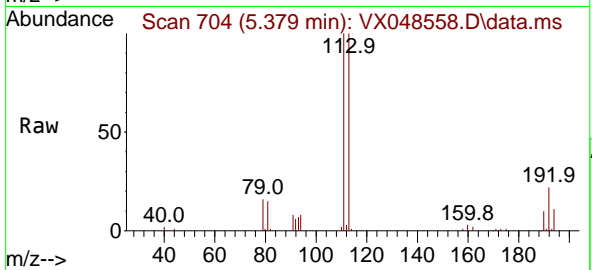




#35
 Dibromofluoromethane
 Concen: 44.871 ug/l
 RT: 5.379 min Scan# 703
 Delta R.T. 0.006 min
 Lab File: VX048558.D
 Acq: 11 Nov 2025 12:45

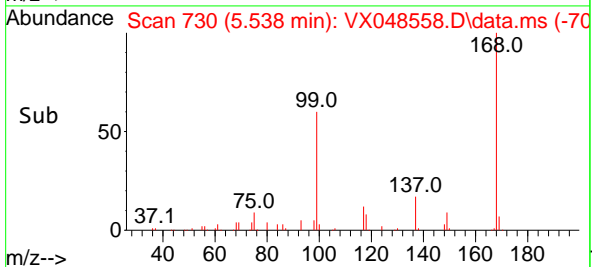
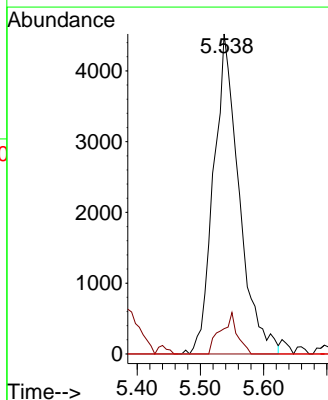
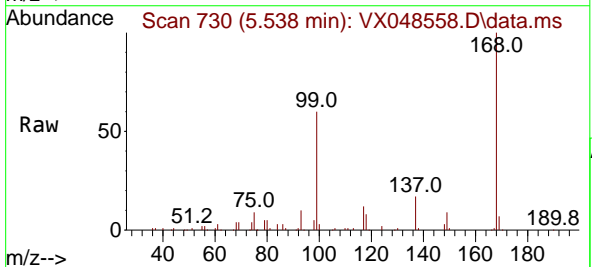
Instrument : MSVOA_X
 ClientSampleId : 304641-01 Liquid

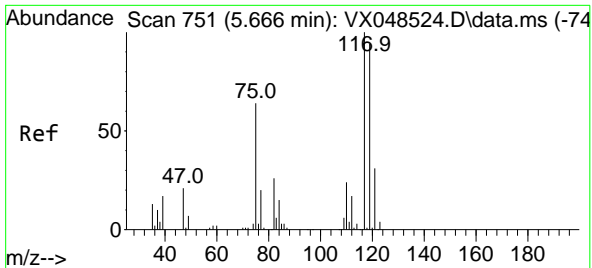
Tgt Ion:113 Resp: 115536
 Ion Ratio Lower Upper
 113 100
 111 101.3 81.9 122.9
 192 19.8 15.8 23.6



#36
 1,1-Dichloropropene
 Concen: 3.674 ug/l
 RT: 5.538 min Scan# 730
 Delta R.T. -0.140 min
 Lab File: VX048558.D
 Acq: 11 Nov 2025 12:45

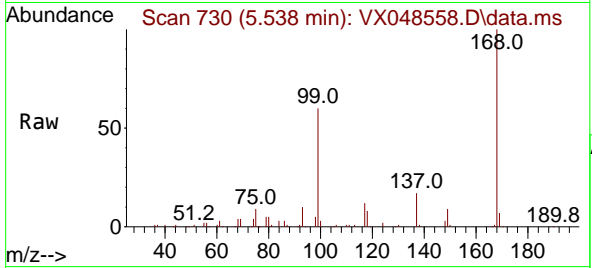
Tgt Ion: 75 Resp: 12669
 Ion Ratio Lower Upper
 75 100
 110 8.4 18.4 55.4#
 77 0.0 24.6 37.0#



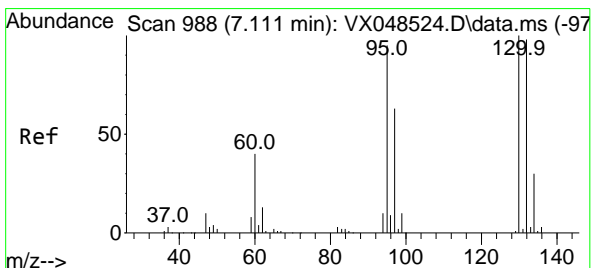
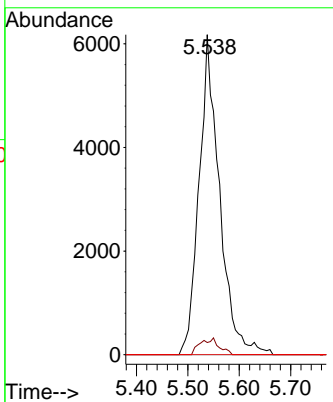
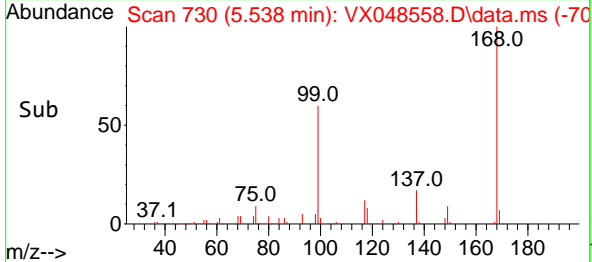


#38
 Carbon Tetrachloride
 Concen: 4.356 ug/l
 RT: 5.538 min Scan# 71
 Delta R.T. -0.128 min
 Lab File: VX048558.D
 Acq: 11 Nov 2025 12:45

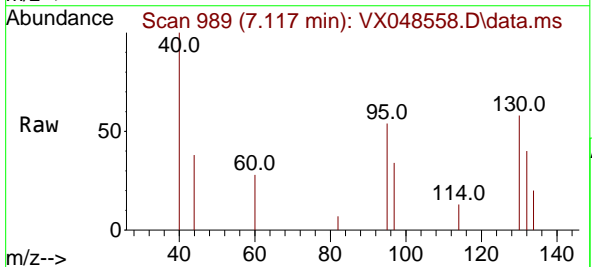
Instrument : MSVOA_X
 ClientSampleId : 304641-01 Liquid



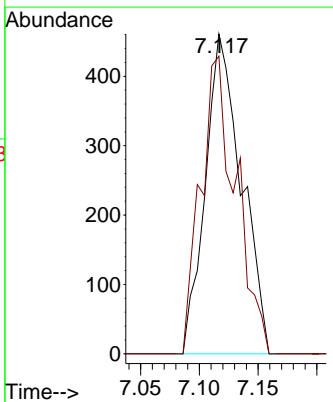
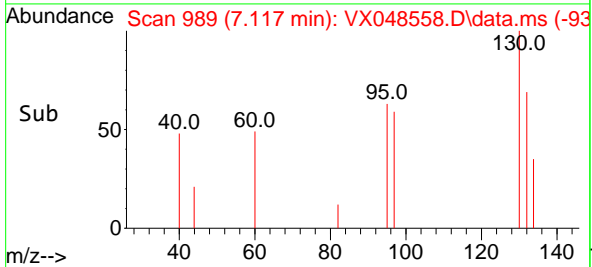
Tgt Ion:117 Resp: 17096
 Ion Ratio Lower Upper
 117 100
 119 3.8 74.5 111.7#
 121 0.0 24.8 37.2#

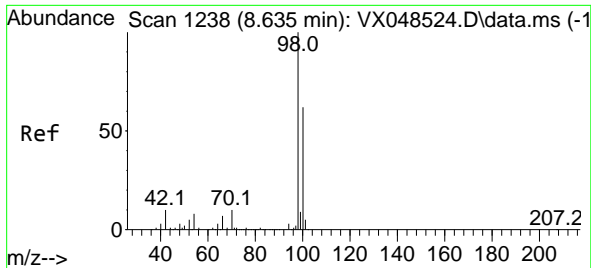


#44
 Trichloroethene
 Concen: 0.386 ug/l
 RT: 7.117 min Scan# 989
 Delta R.T. 0.006 min
 Lab File: VX048558.D
 Acq: 11 Nov 2025 12:45



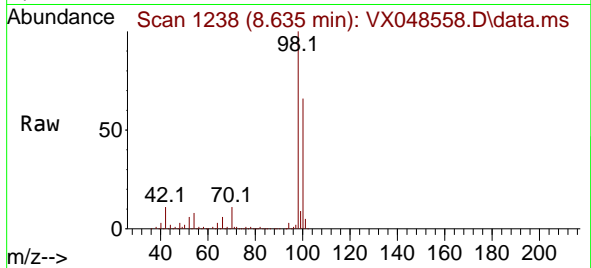
Tgt Ion:130 Resp: 985
 Ion Ratio Lower Upper
 130 100
 95 93.1 0.0 190.2



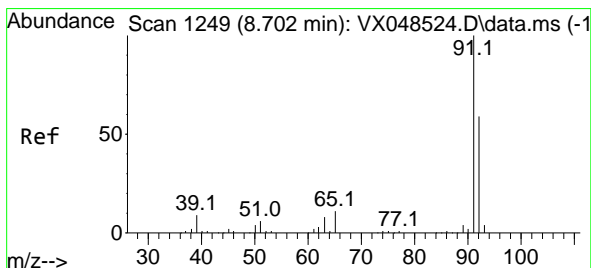
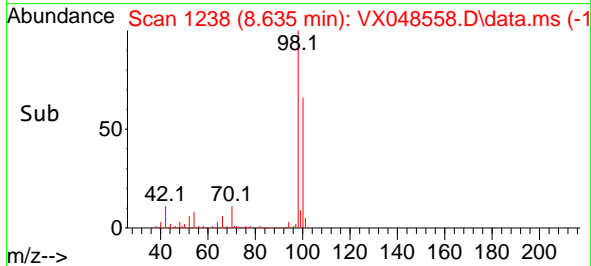
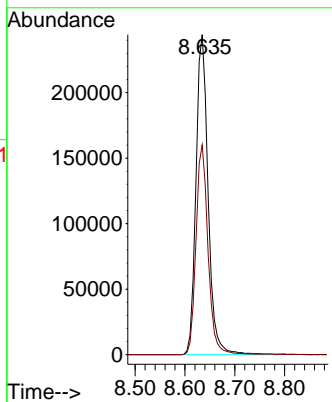


#50
 Toluene-d8
 Concen: 51.429 ug/l
 RT: 8.635 min Scan# 11
 Delta R.T. -0.000 min
 Lab File: VX048558.D
 Acq: 11 Nov 2025 12:45

Instrument :
 MSVOA_X
 ClientSampleId :
 304641-01 Liquid

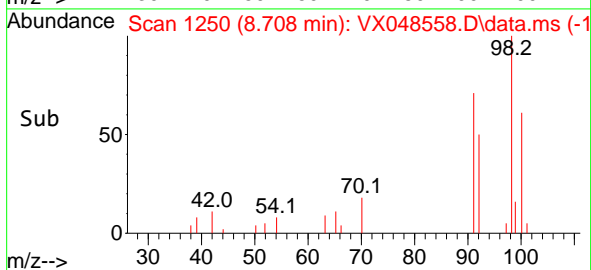
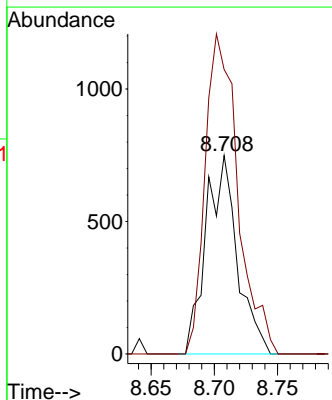
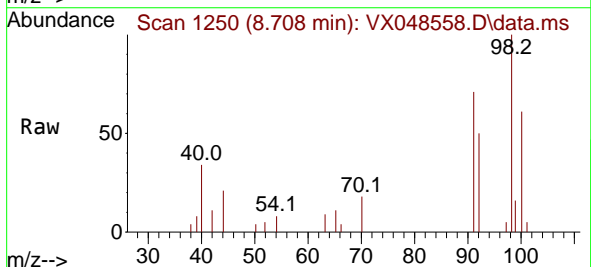


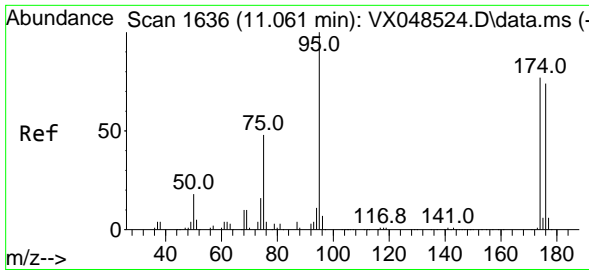
Tgt Ion: 98 Resp: 413001
 Ion Ratio Lower Upper
 98 100
 100 65.0 53.6 80.4



#52
 Toluene
 Concen: 0.229 ug/l
 RT: 8.708 min Scan# 1250
 Delta R.T. 0.006 min
 Lab File: VX048558.D
 Acq: 11 Nov 2025 12:45

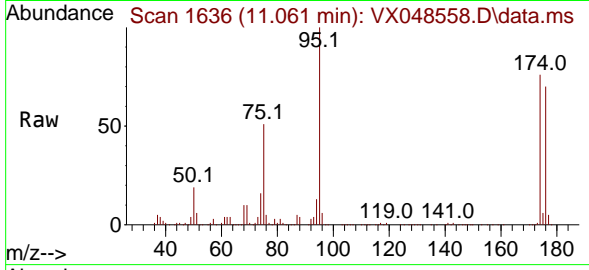
Tgt Ion: 92 Resp: 1290
 Ion Ratio Lower Upper
 92 100
 91 168.6 137.0 205.6



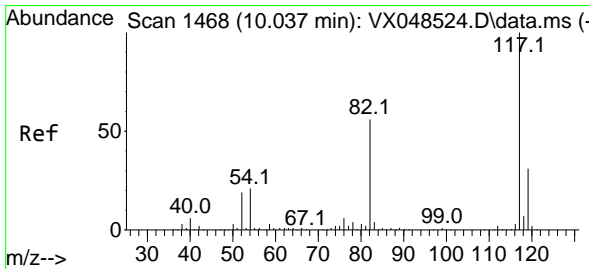
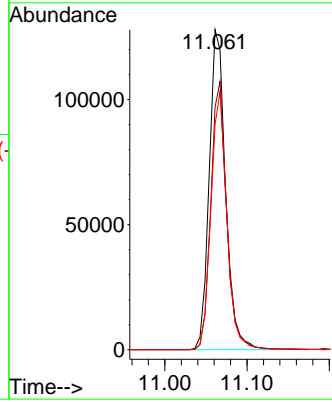
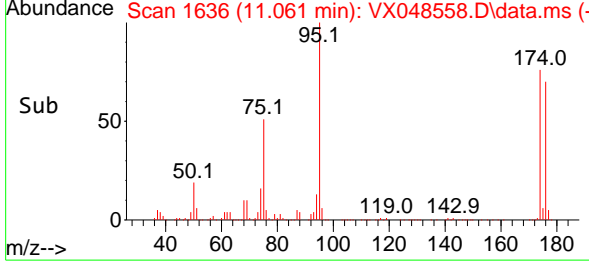


#62
 4-Bromofluorobenzene
 Concen: 58.962 ug/l
 RT: 11.061 min Scan# 11
 Delta R.T. -0.000 min
 Lab File: VX048558.D
 Acq: 11 Nov 2025 12:45

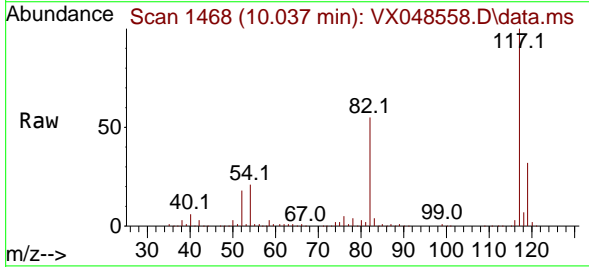
Instrument : MSVOA_X
 ClientSampleId : 304641-01 Liquid



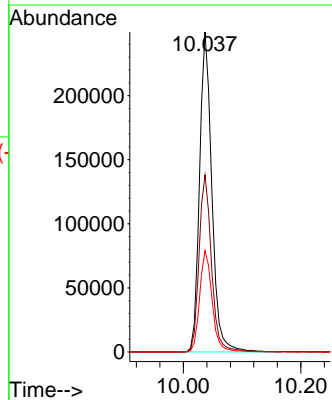
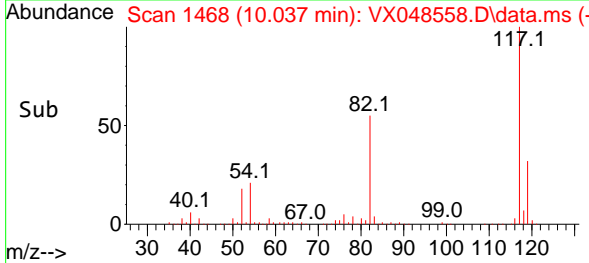
Tgt Ion: 95 Resp: 176457
 Ion Ratio Lower Upper
 95 100
 174 81.8 0.0 161.8
 176 78.6 0.0 153.6

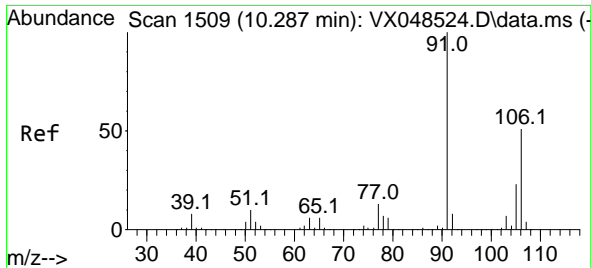


#63
 Chlorobenzene-d5
 Concen: 50.000 ug/l
 RT: 10.037 min Scan# 1468
 Delta R.T. -0.000 min
 Lab File: VX048558.D
 Acq: 11 Nov 2025 12:45



Tgt Ion: 117 Resp: 363054
 Ion Ratio Lower Upper
 117 100
 82 55.3 44.4 66.6
 119 31.6 25.1 37.7

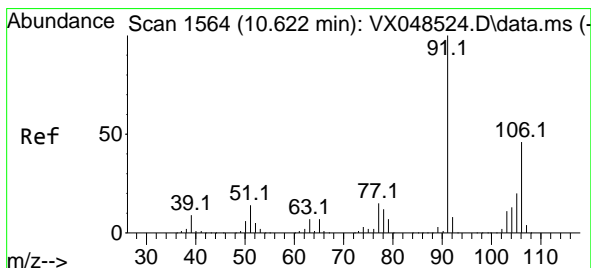
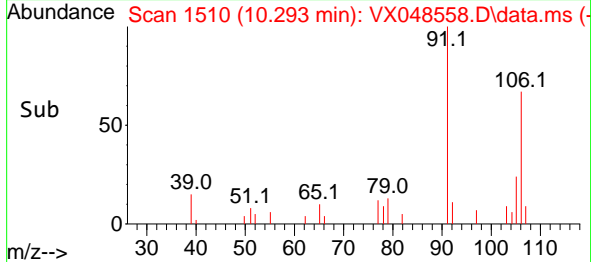
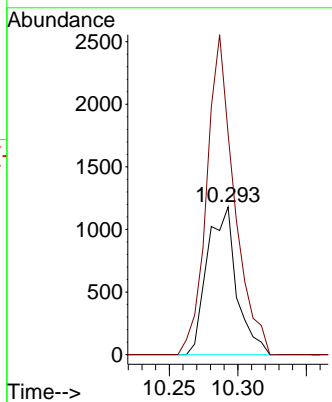
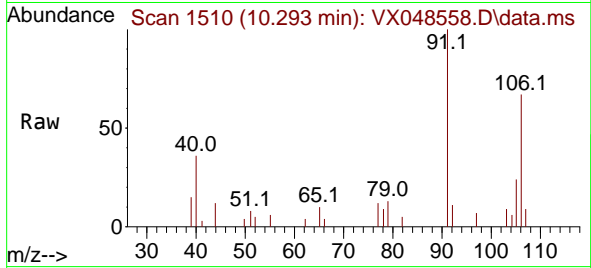




#68
 m/p-Xylenes
 Concen: 0.322 ug/l
 RT: 10.293 min Scan# 1510
 Delta R.T. 0.006 min
 Lab File: VX048558.D
 Acq: 11 Nov 2025 12:45

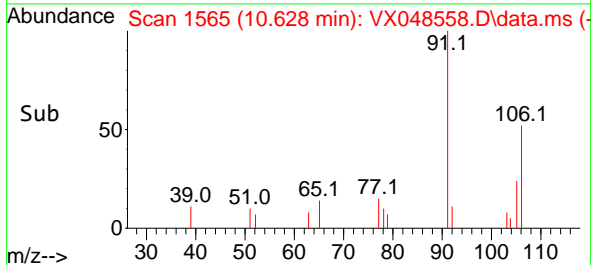
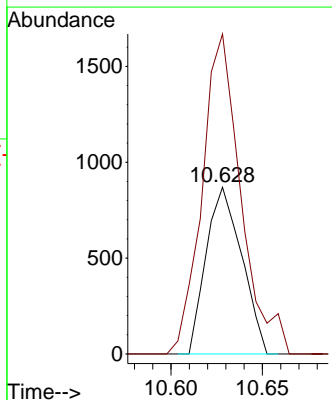
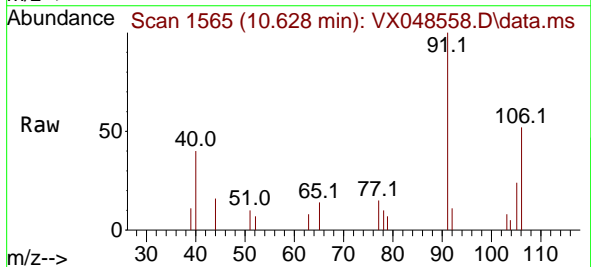
Instrument :
 MSVOA_X
 ClientSampleId :
 304641-01 Liquid

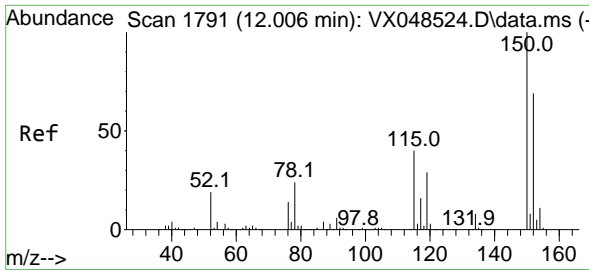
Tgt Ion:106 Resp: 1757
 Ion Ratio Lower Upper
 106 100
 91 203.2 159.6 239.4



#69
 o-Xylene
 Concen: 0.221 ug/l
 RT: 10.628 min Scan# 1565
 Delta R.T. 0.006 min
 Lab File: VX048558.D
 Acq: 11 Nov 2025 12:45

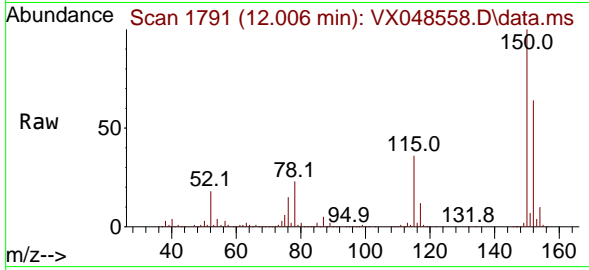
Tgt Ion:106 Resp: 1179
 Ion Ratio Lower Upper
 106 100
 91 209.1 106.4 319.2



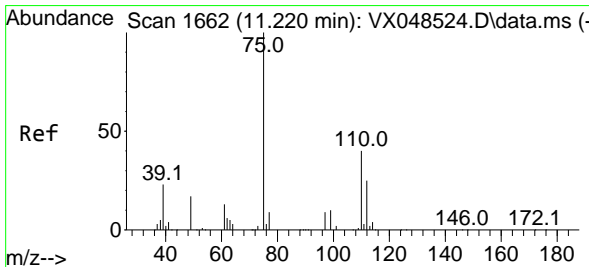
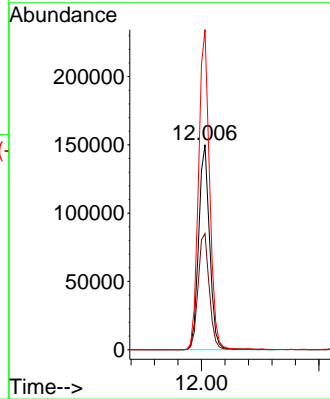
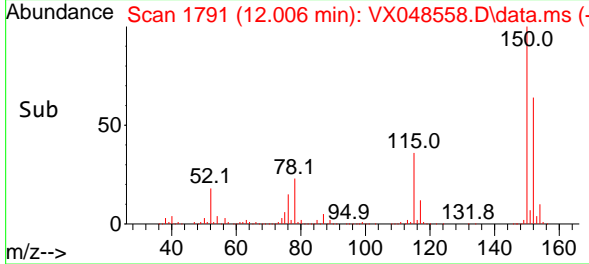


#72
 1,4-Dichlorobenzene-d4
 Concen: 50.000 ug/l
 RT: 12.006 min Scan# 11
 Delta R.T. -0.000 min
 Lab File: VX048558.D
 Acq: 11 Nov 2025 12:45

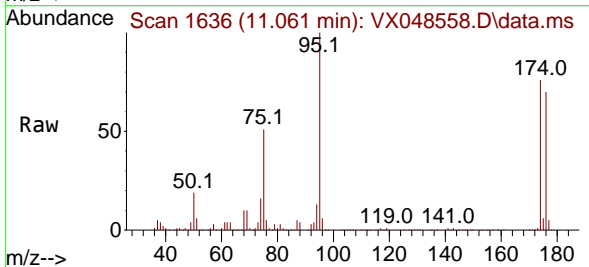
Instrument : MSVOA_X
 ClientSampleId : 304641-01 Liquid



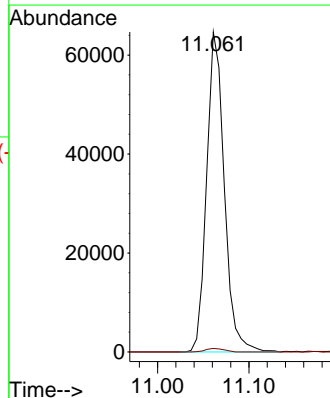
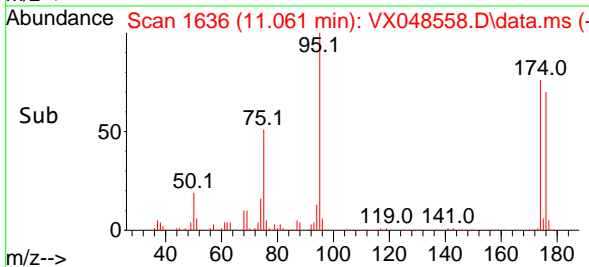
Tgt Ion:152 Resp: 194663
 Ion Ratio Lower Upper
 152 100
 115 57.8 39.2 117.6
 150 156.7 0.0 347.0

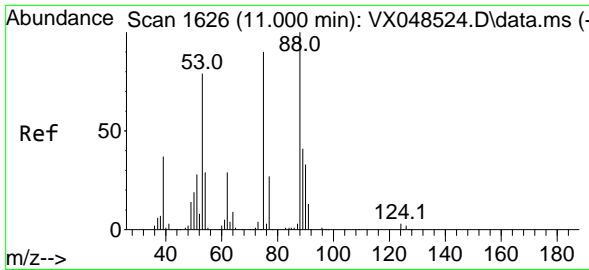


#76
 1,2,3-Trichloropropane
 Concen: 18.474 ug/l
 RT: 11.061 min Scan# 1636
 Delta R.T. -0.159 min
 Lab File: VX048558.D
 Acq: 11 Nov 2025 12:45



Tgt Ion: 75 Resp: 86638
 Ion Ratio Lower Upper
 75 100
 77 1.2 24.3 72.8#

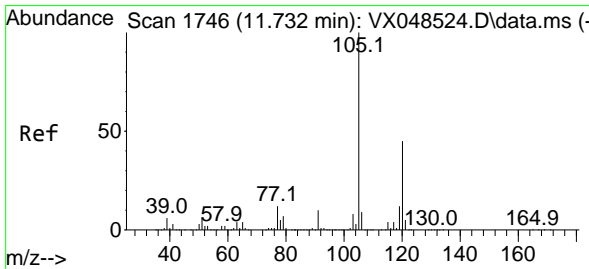
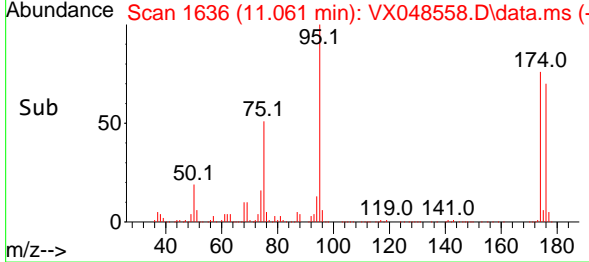
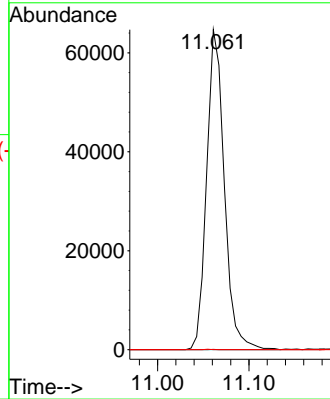
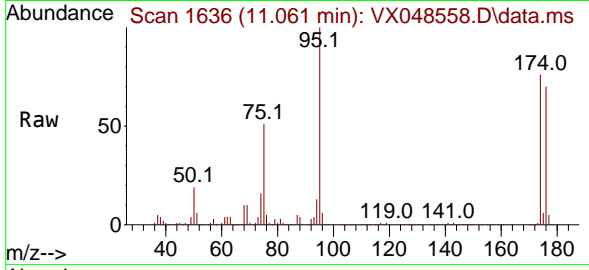




#81
 trans-1,4-Dichloro-2-butene
 Concen: 52.842 ug/l
 RT: 11.061 min Scan# 1
 Delta R.T. 0.061 min
 Lab File: VX048558.D
 Acq: 11 Nov 2025 12:45

Instrument :
 MSVOA_X
 ClientSampleId :
 304641-01 Liquid

Tgt Ion: 75 Resp: 86638
 Ion Ratio Lower Upper
 75 100
 53 0.0 72.4 108.6#
 89 0.0 43.6 65.4#



#84
 1,2,4-Trimethylbenzene
 Concen: 0.479 ug/l
 RT: 11.732 min Scan# 1746
 Delta R.T. -0.000 min
 Lab File: VX048558.D
 Acq: 11 Nov 2025 12:45

Tgt Ion: 105 Resp: 5565
 Ion Ratio Lower Upper
 105 100
 120 50.2 22.4 67.0

