

Data Path : Z:\voasrv\HPCHEM1\MSVOA_X\Data\VX111125\
 Data File : VX048560.D
 Acq On : 11 Nov 2025 13:45
 Operator : JC/MD
 Sample : IBLK
 Misc : 5.0mL/MSVOA_X/WATER
 ALS Vial : 13 Sample Multiplier: 1

Instrument :
 MSVOA_X
 ClientSampleId :
 IBLK

Quant Time: Nov 12 04:46:00 2025
 Quant Method : Z:\voasrv\HPCHEM1\MSVOA_X\Method\82X110725W.M
 Quant Title : SW846 8260
 QLast Update : Sat Nov 08 05:08:11 2025
 Response via : Initial Calibration

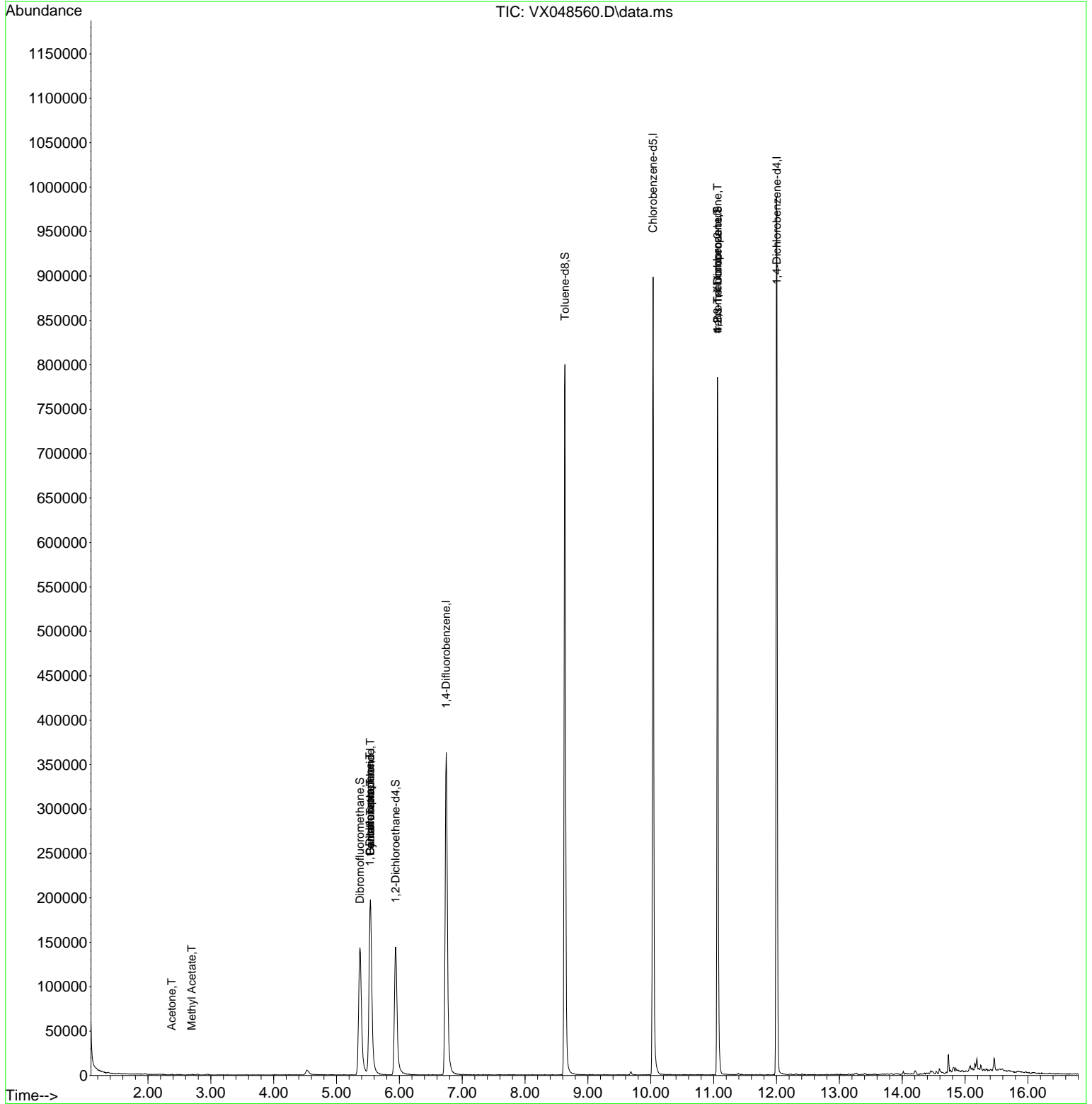
Compound	R.T.	QIon	Response	Conc	Units	Dev(Min)
Internal Standards						
1) Pentafluorobenzene	5.538	168	213189	50.000	ug/l	0.00
34) 1,4-Difluorobenzene	6.745	114	420786	50.000	ug/l	0.00
63) Chlorobenzene-d5	10.037	117	440620	50.000	ug/l	0.00
72) 1,4-Dichlorobenzene-d4	12.006	152	228400	50.000	ug/l	0.00
System Monitoring Compounds						
33) 1,2-Dichloroethane-d4	5.940	65	160569	54.052	ug/l	0.00
Spiked Amount	50.000	Range 78 - 117	Recovery	=	108.100%	
35) Dibromofluoromethane	5.373	113	145434	45.665	ug/l	0.00
Spiked Amount	50.000	Range 75 - 124	Recovery	=	91.340%	
50) Toluene-d8	8.635	98	523500	52.704	ug/l	0.00
Spiked Amount	50.000	Range 92 - 112	Recovery	=	105.400%	
62) 4-Bromofluorobenzene	11.061	95	220778	59.644	ug/l	0.00
Spiked Amount	50.000	Range 83 - 123	Recovery	=	119.280%	
Target Compounds						
						Qvalue
16) Acetone	2.380	43	564	0.401	ug/l	89
18) Methyl Acetate	2.697	43	910	0.235	ug/l #	77
31) Cyclohexane	5.538	56	4220	1.058	ug/l #	1
36) 1,1-Dichloropropene	5.532	75	15786	3.702	ug/l #	49
38) Carbon Tetrachloride	5.538	117	21146	4.356	ug/l #	19
76) 1,2,3-Trichloropropane	11.061	75	108248	19.672	ug/l #	30
81) trans-1,4-Dichloro-2-b...	11.061	75	108248	56.270	ug/l #	12

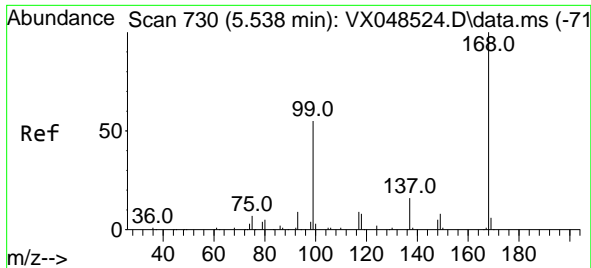
(#) = qualifier out of range (m) = manual integration (+) = signals summed

Data Path : Z:\voasrv\HPCHEM1\MSVOA_X\Data\VX111125\
 Data File : VX048560.D
 Acq On : 11 Nov 2025 13:45
 Operator : JC/MD
 Sample : IBLK
 Misc : 5.0mL/MSVOA_X/WATER
 ALS Vial : 13 Sample Multiplier: 1

Instrument :
 MSVOA_X
 ClientSampleId :
 IBLK

Quant Time: Nov 12 04:46:00 2025
 Quant Method : Z:\voasrv\HPCHEM1\MSVOA_X\Method\82X110725W.M
 Quant Title : SW846 8260
 QLast Update : Sat Nov 08 05:08:11 2025
 Response via : Initial Calibration

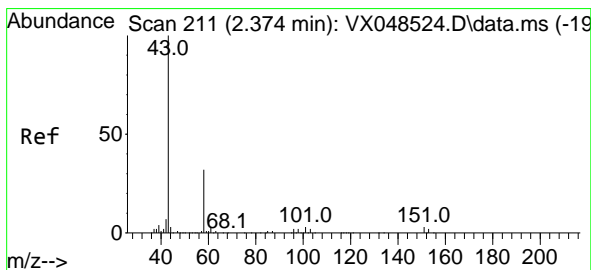
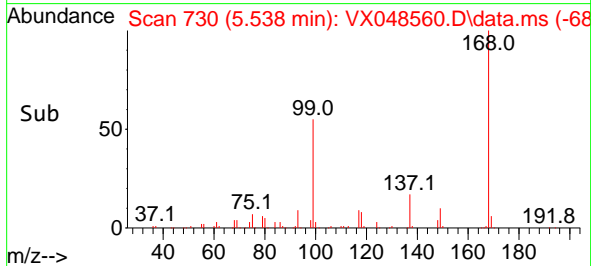
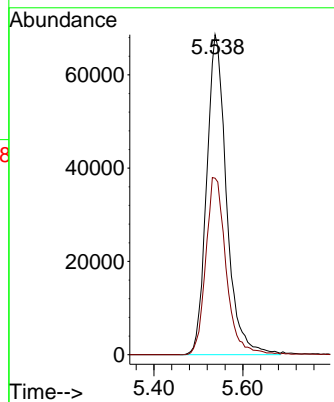
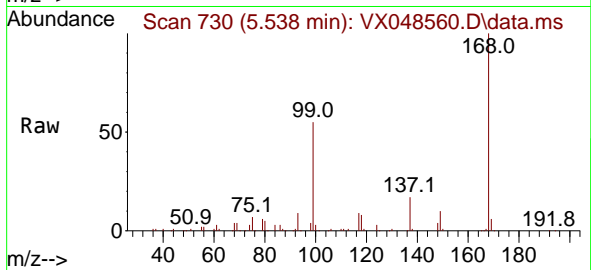




#1
 Pentafluorobenzene
 Concen: 50.000 ug/l
 RT: 5.538 min Scan# 71
 Delta R.T. -0.000 min
 Lab File: VX048560.D
 Acq: 11 Nov 2025 13:45

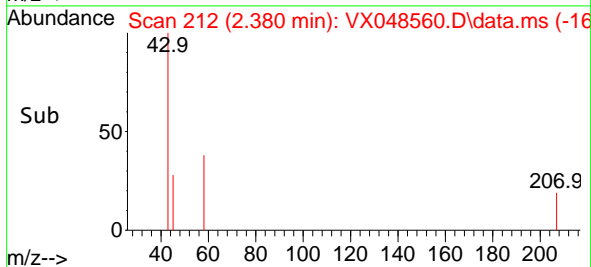
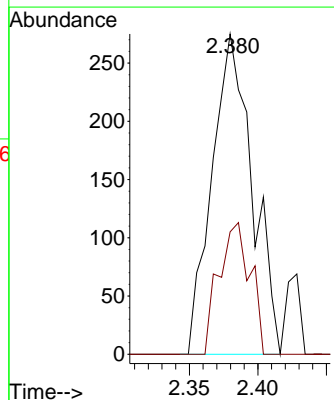
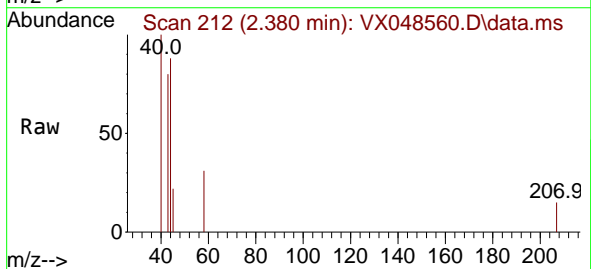
Instrument :
 MSVOA_X
 ClientSampleId :
 IBLK

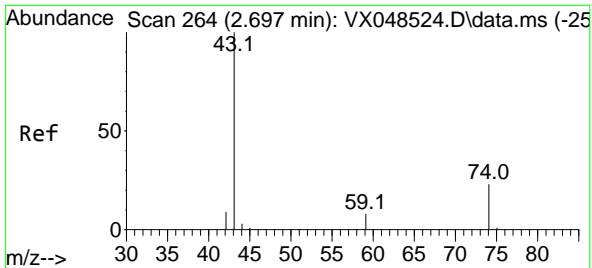
Tgt Ion:168 Resp: 213189
 Ion Ratio Lower Upper
 168 100
 99 55.2 45.2 67.8



#16
 Acetone
 Concen: 0.401 ug/l
 RT: 2.380 min Scan# 212
 Delta R.T. 0.006 min
 Lab File: VX048560.D
 Acq: 11 Nov 2025 13:45

Tgt Ion: 43 Resp: 564
 Ion Ratio Lower Upper
 43 100
 58 38.2 25.8 38.6



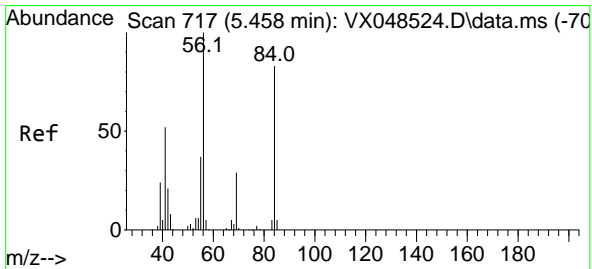
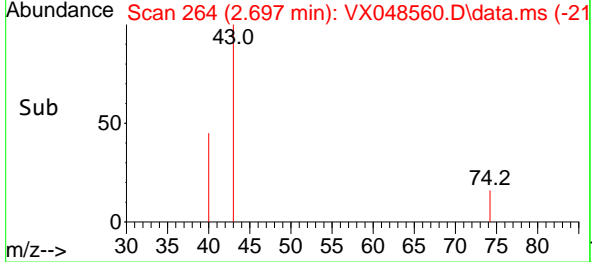
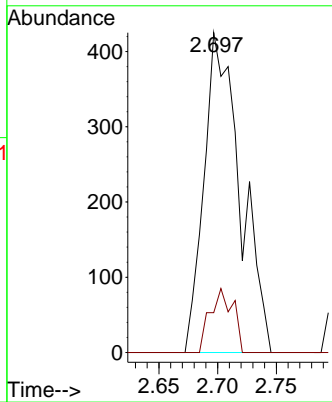
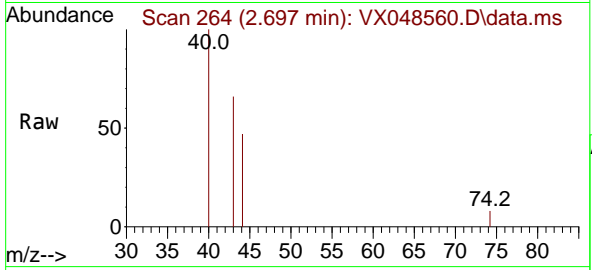


#18
 Methyl Acetate
 Concen: 0.235 ug/l
 RT: 2.697 min Scan# 20
 Delta R.T. -0.000 min
 Lab File: VX048560.D
 Acq: 11 Nov 2025 13:45

Instrument : MSVOA_X
 ClientSampleId : IBLK

Tgt Ion: 43 Resp: 910

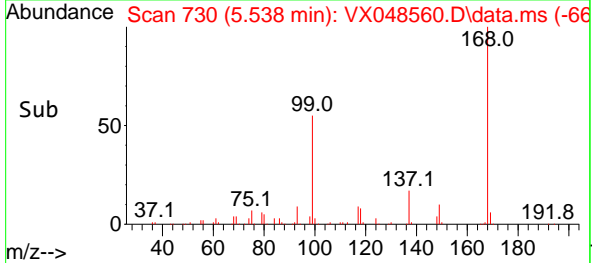
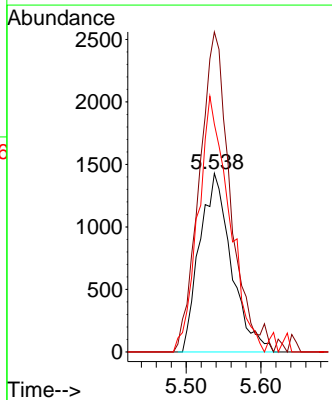
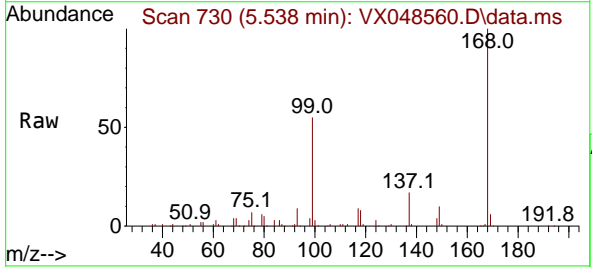
Ion	Ratio	Lower	Upper
43	100		
74	12.6	19.1	28.7#

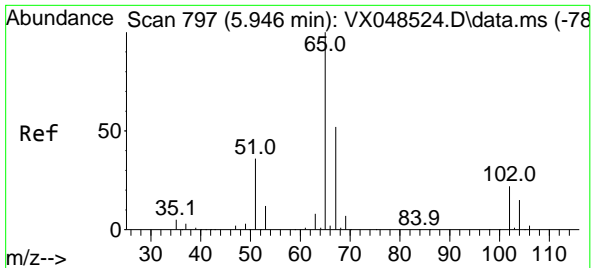


#31
 Cyclohexane
 Concen: 1.058 ug/l
 RT: 5.538 min Scan# 730
 Delta R.T. 0.079 min
 Lab File: VX048560.D
 Acq: 11 Nov 2025 13:45

Tgt Ion: 56 Resp: 4220

Ion	Ratio	Lower	Upper
56	100		
69	174.9	23.4	35.2#
84	127.7	66.3	99.5#

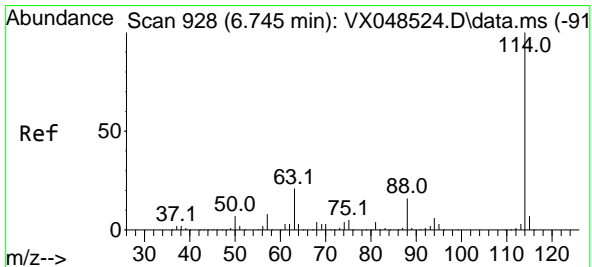
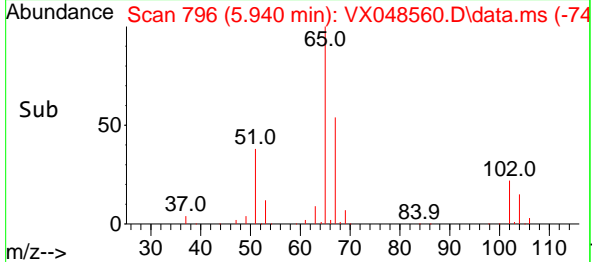
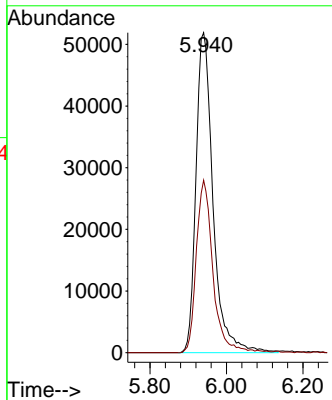
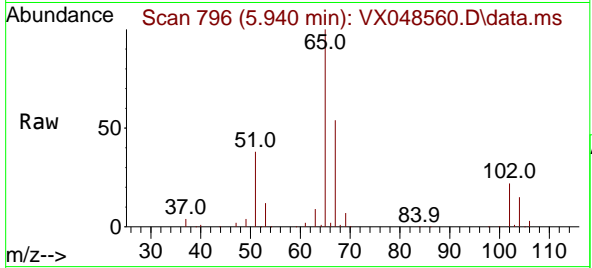




#33
 1,2-Dichloroethane-d4
 Concen: 54.052 ug/l
 RT: 5.940 min Scan# 797
 Delta R.T. -0.006 min
 Lab File: VX048560.D
 Acq: 11 Nov 2025 13:45

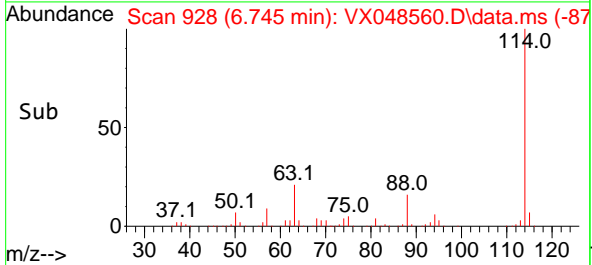
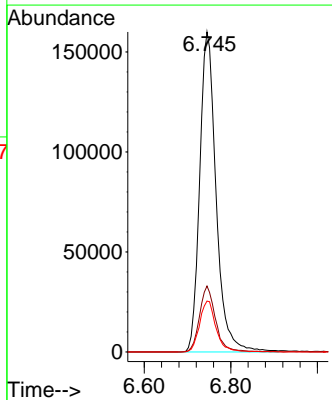
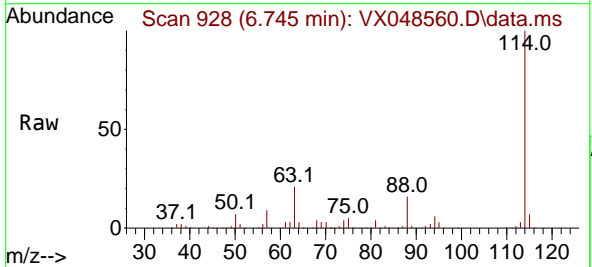
Instrument : MSVOA_X
 ClientSampleId : IBLK

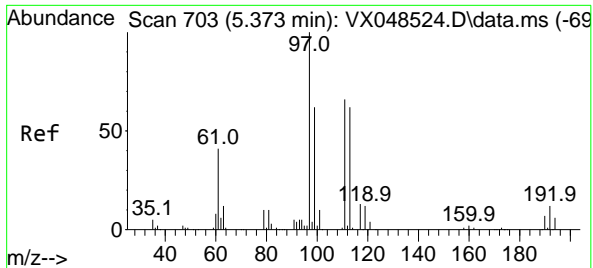
Tgt Ion: 65 Resp: 160569
 Ion Ratio Lower Upper
 65 100
 67 52.7 0.0 106.2



#34
 1,4-Difluorobenzene
 Concen: 50.000 ug/l
 RT: 6.745 min Scan# 928
 Delta R.T. -0.000 min
 Lab File: VX048560.D
 Acq: 11 Nov 2025 13:45

Tgt Ion: 114 Resp: 420786
 Ion Ratio Lower Upper
 114 100
 63 20.6 0.0 41.2
 88 15.9 0.0 32.2



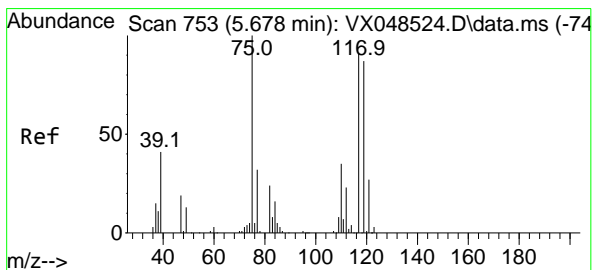
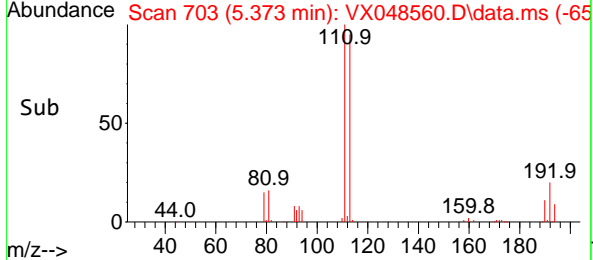
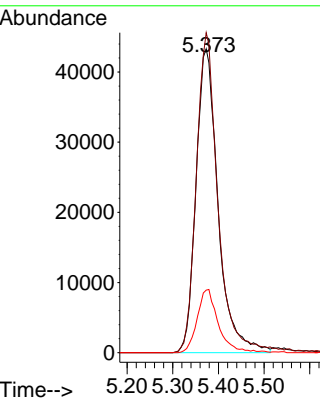
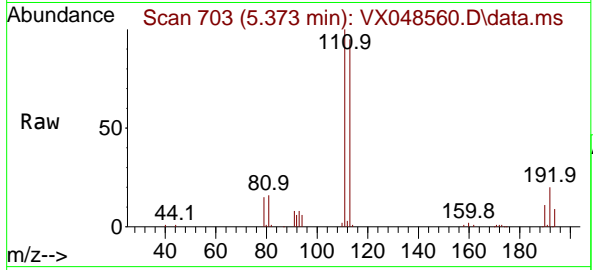


#35
 Dibromofluoromethane
 Concen: 45.665 ug/l
 RT: 5.373 min Scan# 703
 Delta R.T. -0.000 min
 Lab File: VX048560.D
 Acq: 11 Nov 2025 13:45

Instrument : MSVOA_X
 ClientSampleId : IBLK

Tgt Ion: 113 Resp: 145434

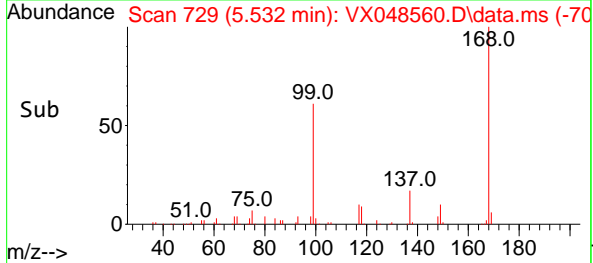
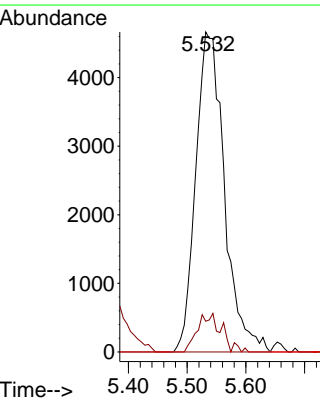
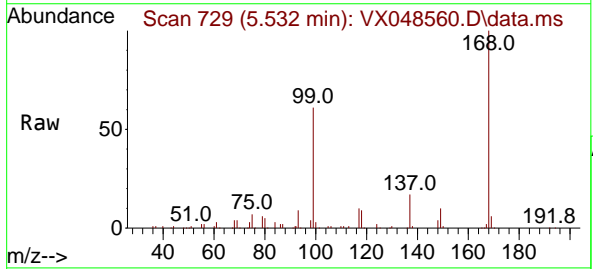
Ion	Ratio	Lower	Upper
113	100		
111	102.9	81.9	122.9
192	19.8	15.8	23.6

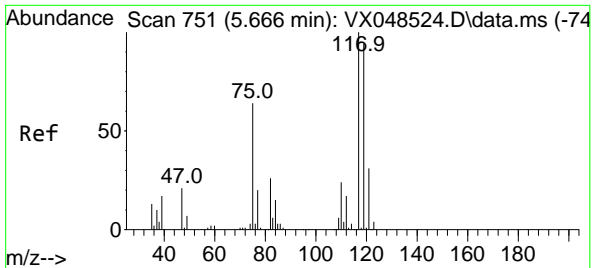


#36
 1,1-Dichloropropene
 Concen: 3.702 ug/l
 RT: 5.532 min Scan# 729
 Delta R.T. -0.146 min
 Lab File: VX048560.D
 Acq: 11 Nov 2025 13:45

Tgt Ion: 75 Resp: 15786

Ion	Ratio	Lower	Upper
75	100		
110	9.4	18.4	55.4#
77	0.0	24.6	37.0#

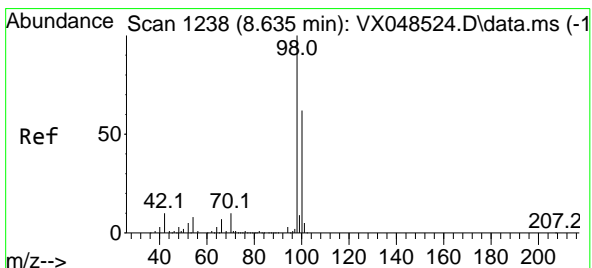
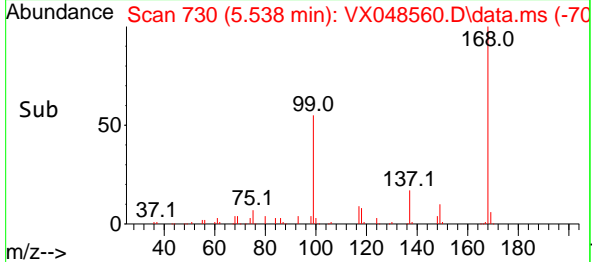
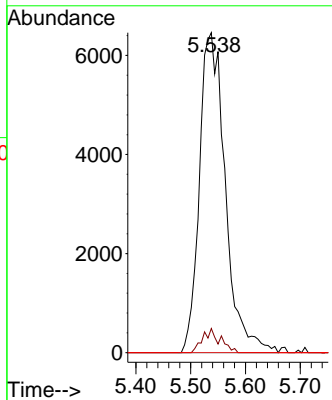
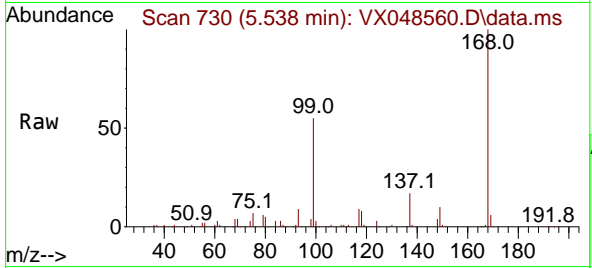




#38
 Carbon Tetrachloride
 Concen: 4.356 ug/l
 RT: 5.538 min Scan# 71
 Delta R.T. -0.128 min
 Lab File: VX048560.D
 Acq: 11 Nov 2025 13:45

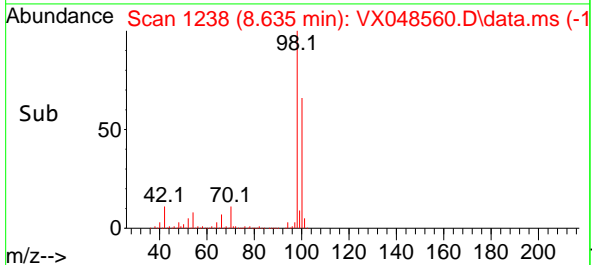
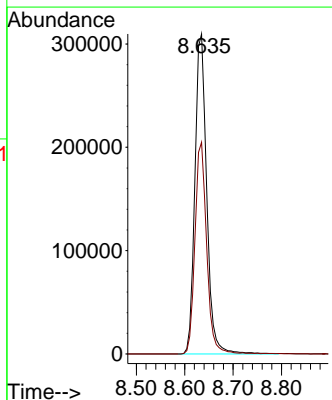
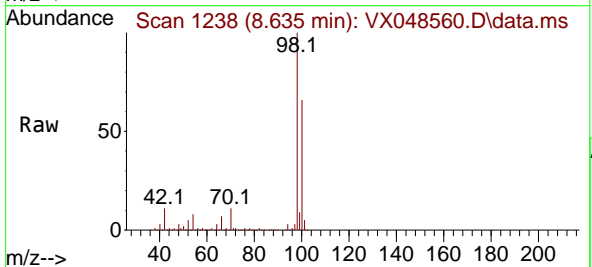
Instrument : MSVOA_X
 ClientSampleId : IBLK

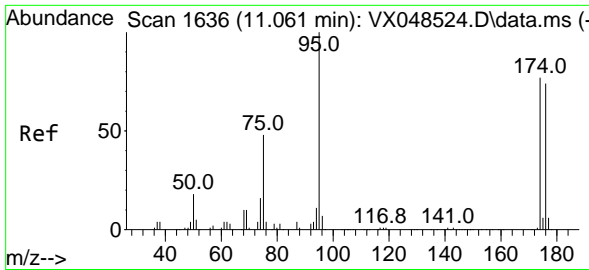
Tgt Ion	Resp	Lower	Upper
117	21146		
117	100		
119	7.6	74.5	111.7#
121	0.0	24.8	37.2#



#50
 Toluene-d8
 Concen: 52.704 ug/l
 RT: 8.635 min Scan# 1238
 Delta R.T. -0.000 min
 Lab File: VX048560.D
 Acq: 11 Nov 2025 13:45

Tgt Ion	Resp	Lower	Upper
98	523500		
98	100		
100	65.8	53.6	80.4



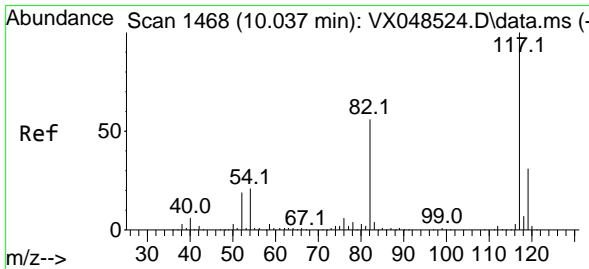
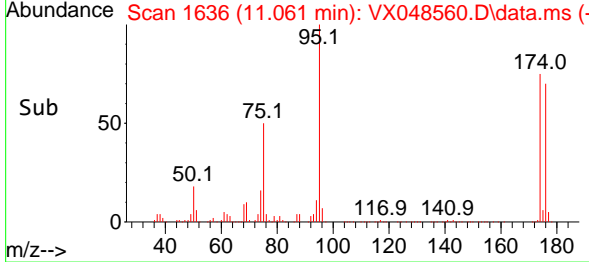
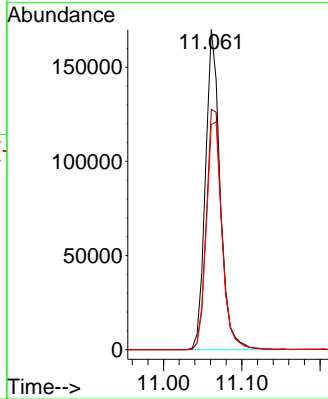
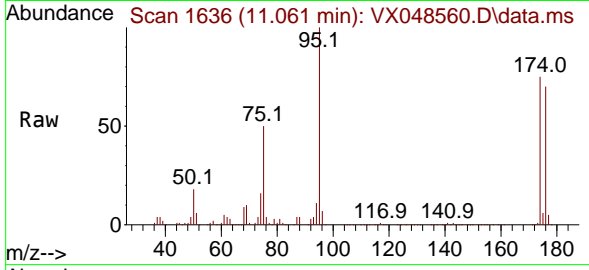


#62
 4-Bromofluorobenzene
 Concen: 59.644 ug/l
 RT: 11.061 min Scan# 1
 Delta R.T. -0.000 min
 Lab File: VX048560.D
 Acq: 11 Nov 2025 13:45

Instrument :
 MSVOA_X
 ClientSampleId :
 IBLK

Tgt Ion: 95 Resp: 220778

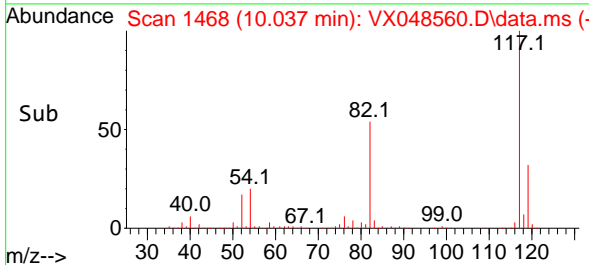
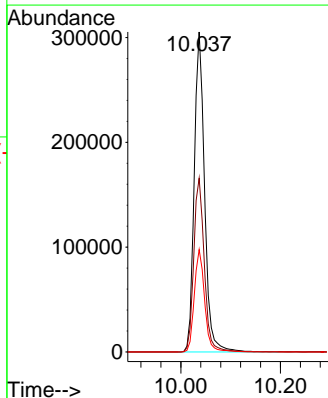
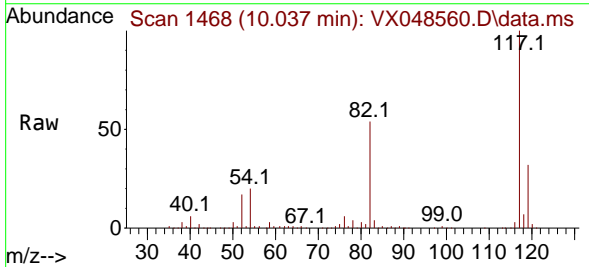
Ion	Ratio	Lower	Upper
95	100		
174	80.3	0.0	161.8
176	76.3	0.0	153.6

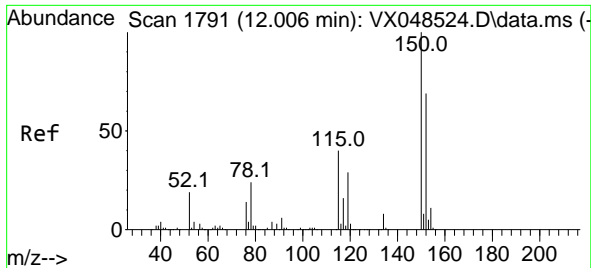


#63
 Chlorobenzene-d5
 Concen: 50.000 ug/l
 RT: 10.037 min Scan# 1468
 Delta R.T. -0.000 min
 Lab File: VX048560.D
 Acq: 11 Nov 2025 13:45

Tgt Ion: 117 Resp: 440620

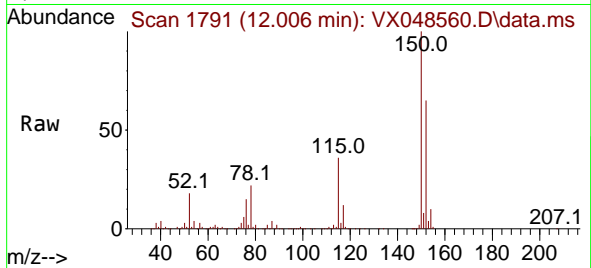
Ion	Ratio	Lower	Upper
117	100		
82	54.3	44.4	66.6
119	32.0	25.1	37.7



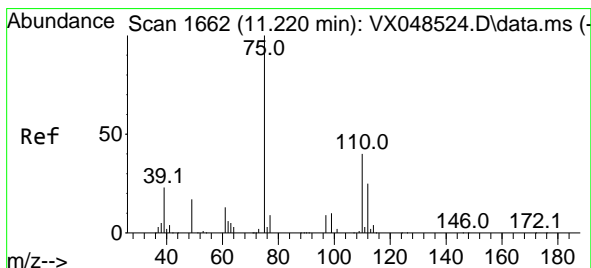
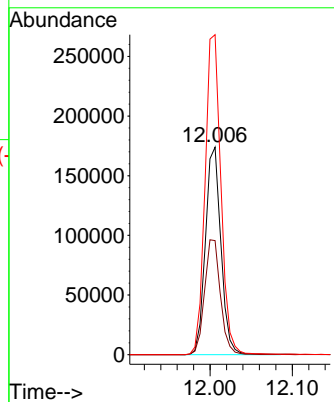
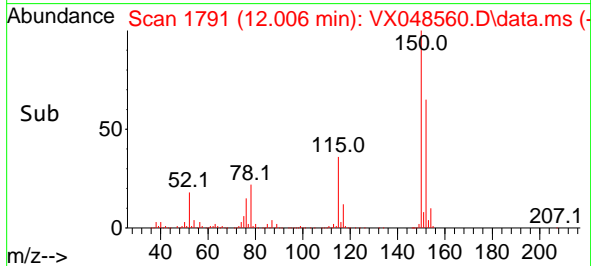


#72
 1,4-Dichlorobenzene-d4
 Concen: 50.000 ug/l
 RT: 12.006 min Scan# 11
 Delta R.T. -0.000 min
 Lab File: VX048560.D
 Acq: 11 Nov 2025 13:45

Instrument :
 MSVOA_X
 ClientSampleId :
 IBLK

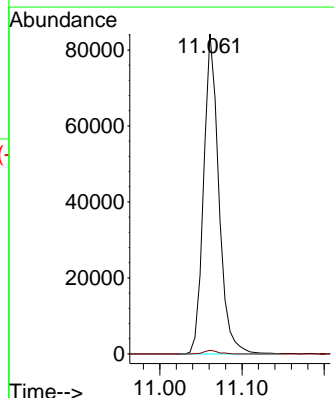
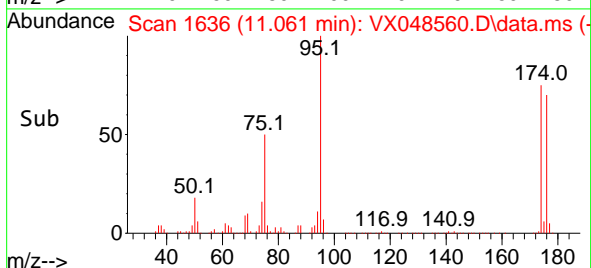
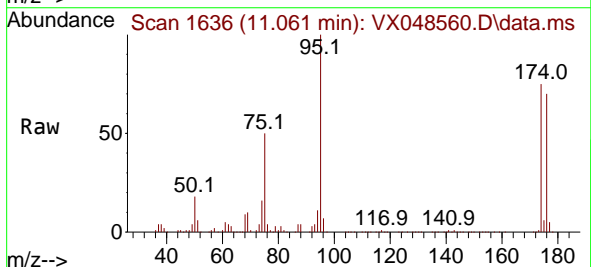


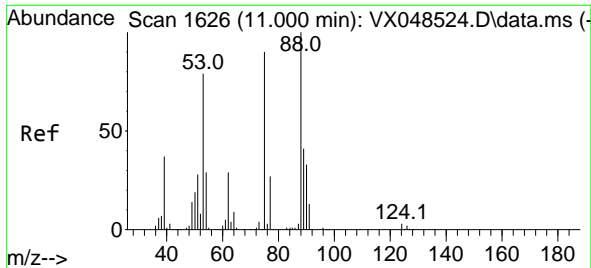
Tgt Ion:152 Resp: 228400
 Ion Ratio Lower Upper
 152 100
 115 56.6 39.2 117.6
 150 157.4 0.0 347.0



#76
 1,2,3-Trichloropropane
 Concen: 19.672 ug/l
 RT: 11.061 min Scan# 1636
 Delta R.T. -0.159 min
 Lab File: VX048560.D
 Acq: 11 Nov 2025 13:45

Tgt Ion: 75 Resp: 108248
 Ion Ratio Lower Upper
 75 100
 77 1.1 24.3 72.8#





#81
 trans-1,4-Dichloro-2-butene
 Concen: 56.270 ug/l
 RT: 11.061 min Scan# 1
 Delta R.T. 0.061 min
 Lab File: VX048560.D
 Acq: 11 Nov 2025 13:45

Instrument :
 MSVOA_X
 ClientSampleId :
 IBLK

Tgt Ion: 75 Resp: 108248
 Ion Ratio Lower Upper
 75 100
 53 0.0 72.4 108.6#
 89 0.0 43.6 65.4#

