

Data Path : Z:\VOASRV\HPCHEM1\MSVOA X\DATA\ VX111218\  
 Data File : VX005906.D  
 Acq On : 12 Nov 2018 17:47  
 Operator : JC/MD  
 Sample : J5899-01  
 Misc : 5.0mL/MSVOA X/WATER  
 ALS Vial : 16 Sample Multiplier: 1

Instrument :  
 MSVOA\_X  
 ClientSampled :  
 S36-0146

Quant Time: Nov 13 04:42:50 2018  
 Quant Method : Z:\VOASRV\HPCHEM1\MSVOA\_X\METHOD\82X110718W.M  
 Quant Title : SW846 8260  
 QLast Update : Wed Nov 07 14:40:53 2018  
 Response via : Initial Calibration

Internal Standards	R.T.	QIon	Response	Conc	Units	Dev(Min)
1) Pentafluorobenzene	5.67	168	115723	50.00	ug/l	0.01
34) 1,4-Difluorobenzene	6.86	114	165971	50.00	ug/l	0.00
63) Chlorobenzene-d5	10.12	117	150470	50.00	ug/l	0.00
72) 1,4-Dichlorobenzene-d4	12.08	152	74135	50.00	ug/l	0.00

## System Monitoring Compounds

33) 1,2-Dichloroethane-d4	6.07	65	68003	51.12	ug/l	0.00
Spiked Amount	50.000		Recovery	=	102.24%	
35) Dibromofluoromethane	5.51	113	55497	49.16	ug/l	0.00
Spiked Amount	50.000		Recovery	=	98.32%	
50) Toluene-d8	8.71	98	199047	53.04	ug/l	0.00
Spiked Amount	50.000		Recovery	=	106.08%	
62) 4-Bromofluorobenzene	11.14	95	68278	50.60	ug/l	0.00
Spiked Amount	50.000		Recovery	=	101.20%	

## Target Compounds

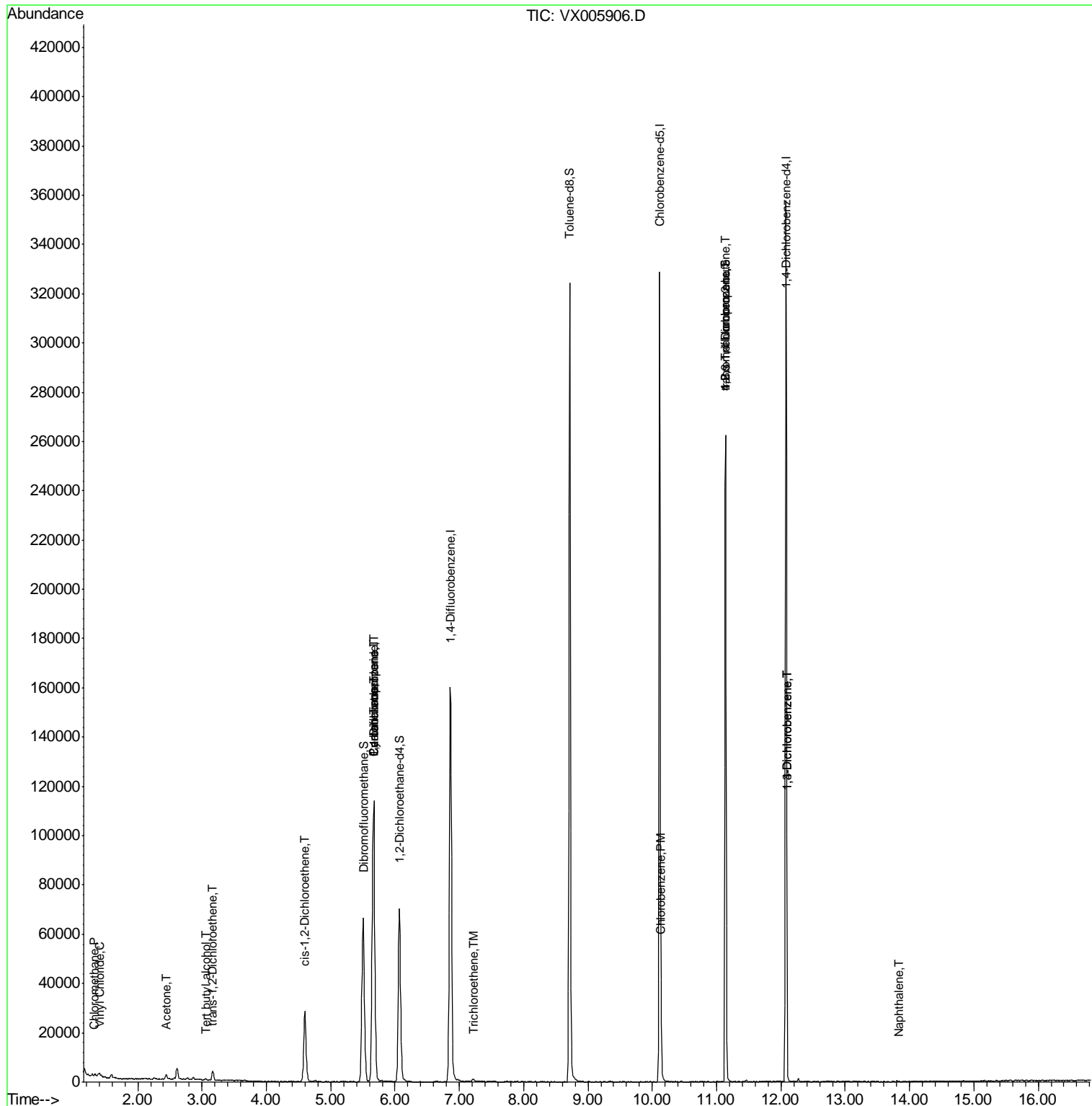
						Qvalue
3) Chloromethane	1.32	50	540	0.394	ug/l	95
4) Vinyl Chloride	1.41	62	710	0.517	ug/l #	77
11) Tert butyl alcohol	3.06	59	355	0.931	ug/l #	72
16) Acetone	2.44	43	2419	3.377	ug/l	95
18) Methyl Acetate	2.78	43	766	Below Cal	#	66
21) trans-1,2-Dichloroethene	3.17	96	1504	1.394	ug/l #	79
27) cis-1,2-Dichloroethene	4.60	96	18439	15.478	ug/l	84
31) Cyclohexane	5.67	56	2112	1.140	ug/l #	1
36) 1,1-Dichloropropene	5.67	75	8042	5.026	ug/l #	49
38) Carbon Tetrachloride	5.67	117	10349	6.461	ug/l #	16
44) Trichloroethene	7.21	130	420	0.355	ug/l	91
65) Chlorobenzene	10.14	112	6762	2.243	ug/l	99
76) 1,2,3-Trichloropropane	11.14	75	33397	22.124	ug/l #	36
81) trans-1,4-Dichloro-2-buten	11.14	75	33397	70.512	ug/l #	9
84) 1,2,4-Trimethylbenzene	11.94	105	44	Below Cal	#	31
87) 1,3-Dichlorobenzene	12.10	146	535	0.231	ug/l #	1
88) 1,4-Dichlorobenzene	12.10	146	535	0.225	ug/l #	1
95) Naphthalene	13.83	128	147	1.204	ug/l #	69

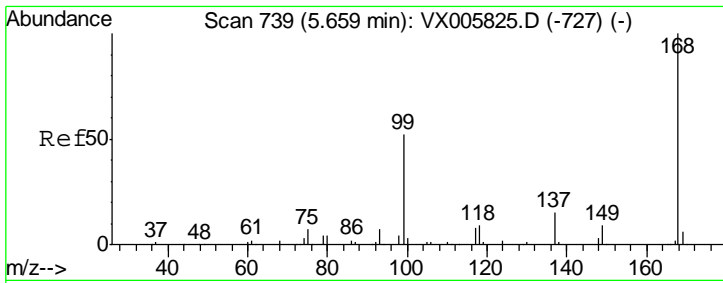
(#) = qualifier out of range (m) = manual integration (+) = signals summed

Data Path : Z:\VOASRV\HPCHEM1\MSVOA X\DATA\VX111218\  
 Data File : VX005906.D  
 Acq On : 12 Nov 2018 17:47  
 Operator : JC/MD  
 Sample : J5899-01  
 Misc : 5.0mL/MSVOA X/WATER  
 ALS Vial : 16 Sample Multiplier: 1

Instrument :  
 MSVOA\_X  
 Client Sampled :  
 S36-0146

Quant Time: Nov 13 04:42:50 2018  
 Quant Method : Z:\VOASRV\HPCHEM1\MSVOA\_X\METHOD\82X110718W.M  
 Quant Title : SW846 8260  
 QLast Update : Wed Nov 07 14:40:53 2018  
 Response via : Initial Calibration

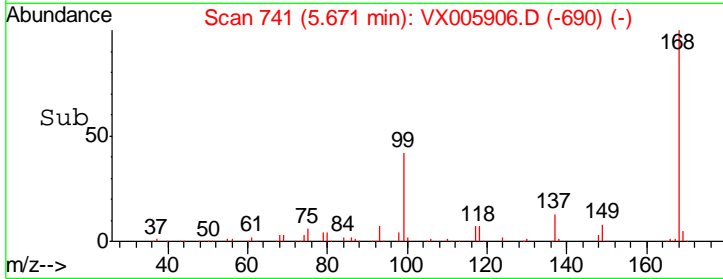
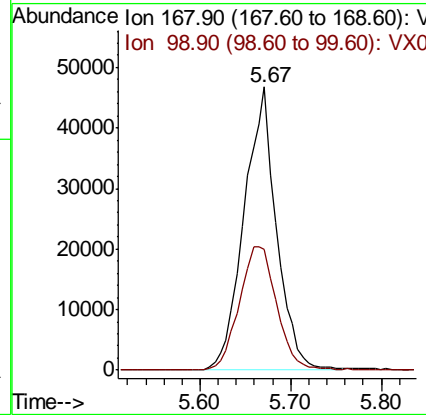
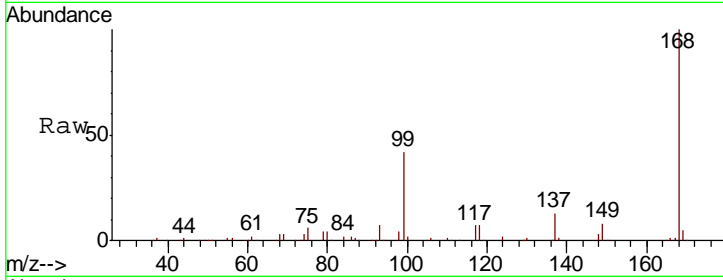




#1  
 Pentafluorobenzene  
 Concen: 50.000 ug/l  
 RT: 5.67 min Scan# 741  
 Delta R.T. 0.01 min  
 Lab File: VX005906.D  
 Acq: 12 Nov 2018 17:47

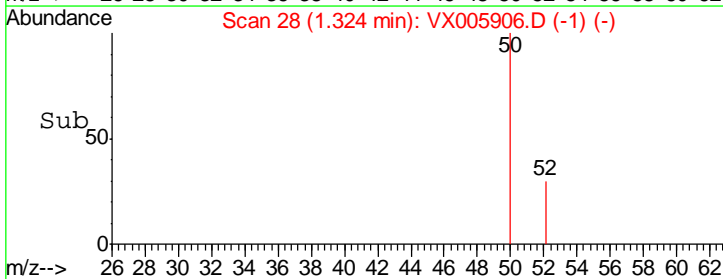
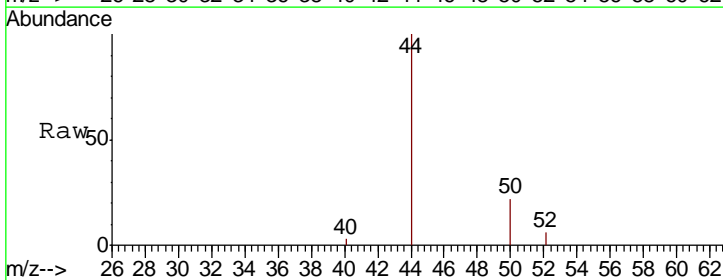
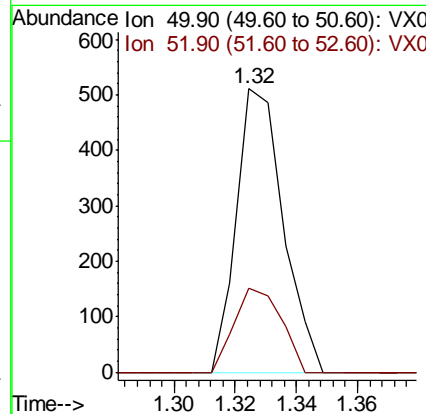
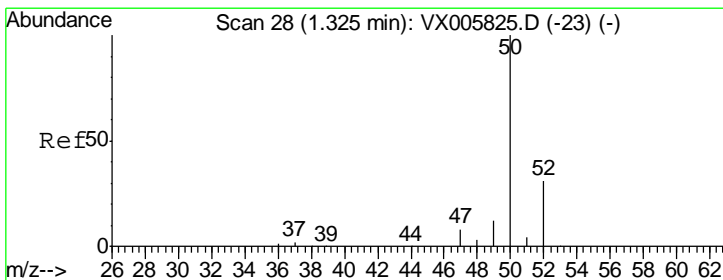
Instrument :  
 MSVOA\_X  
 ClientSampleID :  
 S36-0146

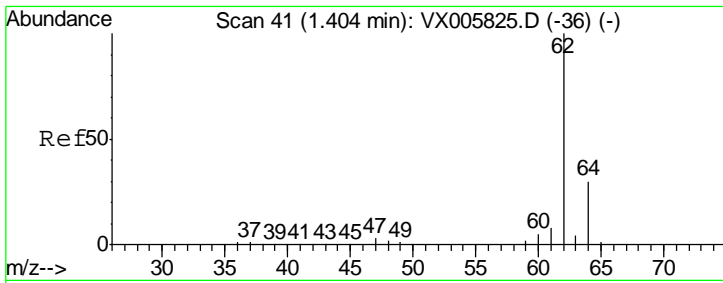
Tot Ion:168 Resp: 115723  
 Ion Ratio Lower Upper  
 168 100  
 99 42.5 40.7 61.1



#3  
 Chloromethane  
 Concen: 0.394 ug/l  
 RT: 1.32 min Scan# 28  
 Delta R.T. -0.00 min  
 Lab File: VX005906.D  
 Acq: 12 Nov 2018 17:47

Tgt Ion: 50 Resp: 540  
 Ion Ratio Lower Upper  
 50 100  
 52 29.7 26.2 39.2

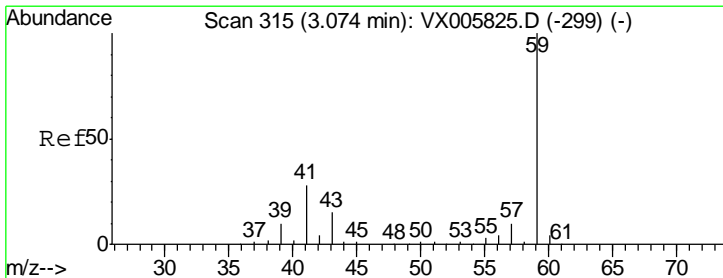
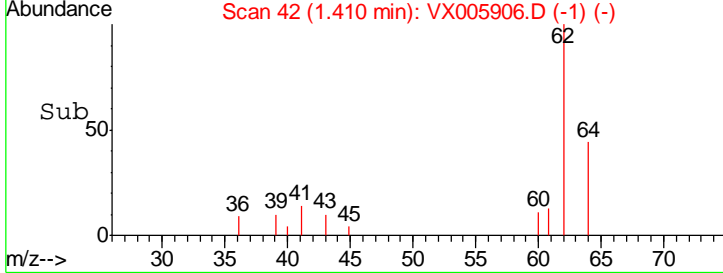
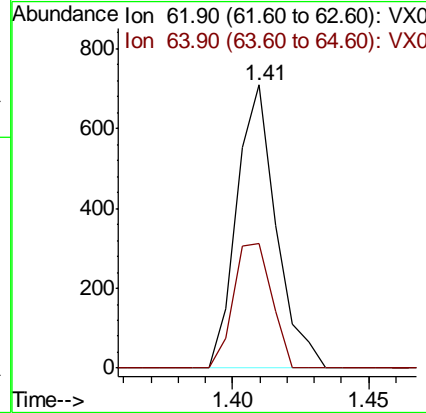
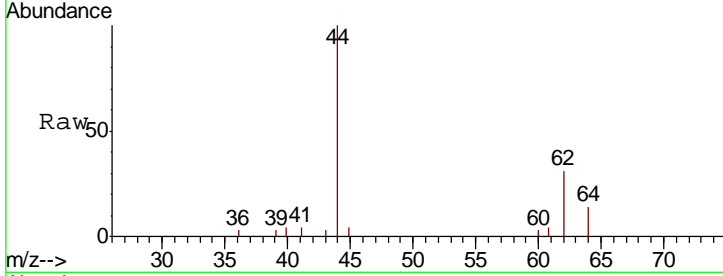




#4  
 Vinyl Chloride  
 Concen: 0.517 ug/l  
 RT: 1.41 min Scan# 42  
 Delta R.T. 0.01 min  
 Lab File: VX005906.D  
 Acq: 12 Nov 2018 17:47

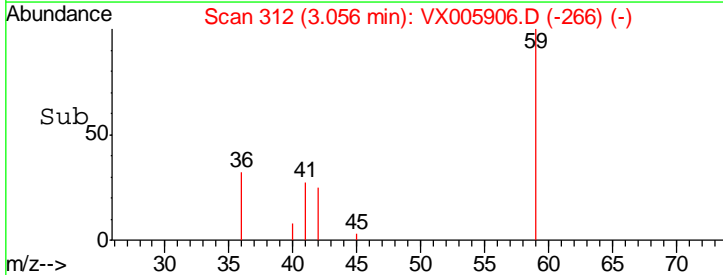
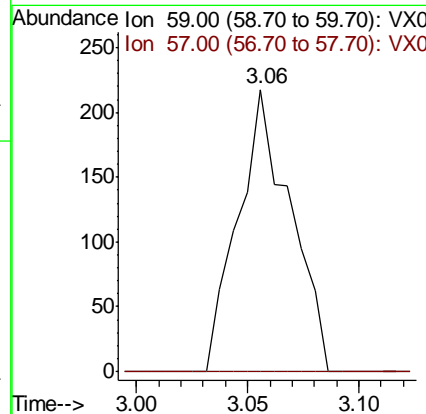
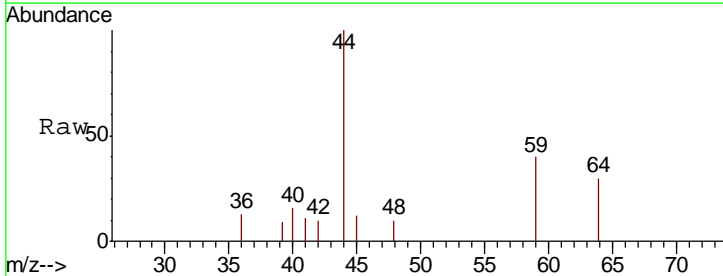
Instrument :  
 MSVOA\_X  
 ClientSampled :  
 S36-0146

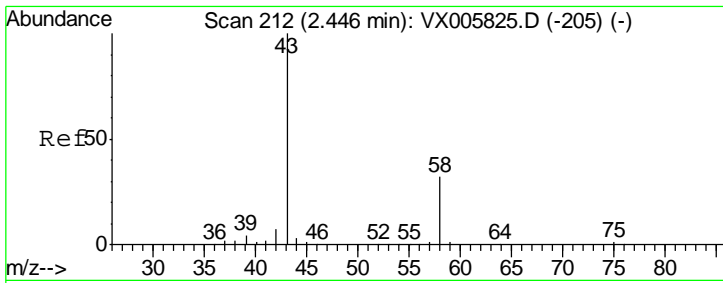
Tgt Ion: 62 Resp: 710  
 Ion Ratio Lower Upper  
 62 100  
 64 44.2 25.3 37.9#



#11  
 Tert butyl alcohol  
 Concen: 0.931 ug/l  
 RT: 3.06 min Scan# 312  
 Delta R.T. -0.02 min  
 Lab File: VX005906.D  
 Acq: 12 Nov 2018 17:47

Tgt Ion: 59 Resp: 355  
 Ion Ratio Lower Upper  
 59 100  
 57 0.0 8.5 12.7#

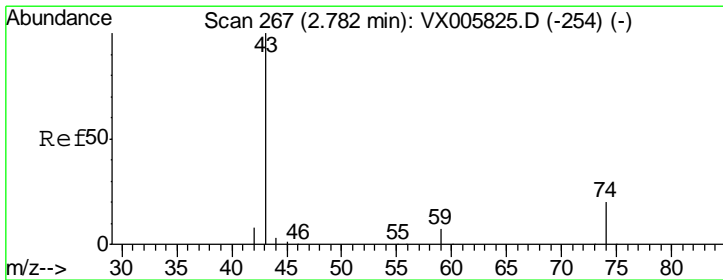
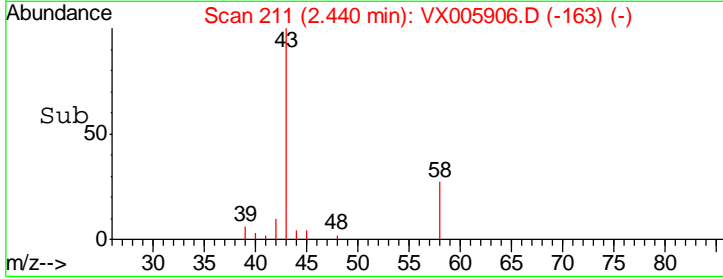
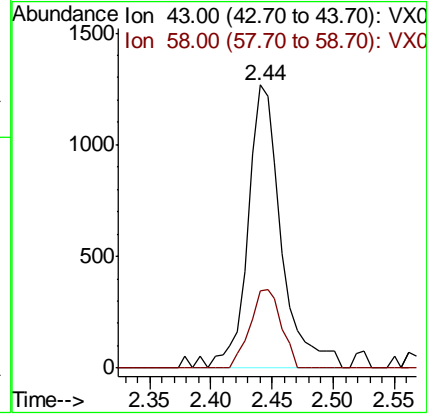
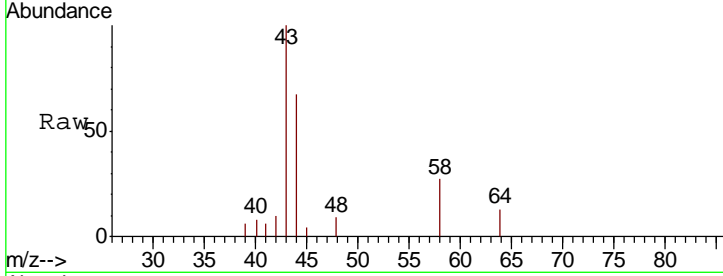




#16  
 Acetone  
 Concen: 3.377 ug/l  
 RT: 2.44 min Scan# 211  
 Delta R.T. -0.01 min  
 Lab File: VX005906.D  
 Acq: 12 Nov 2018 17:47

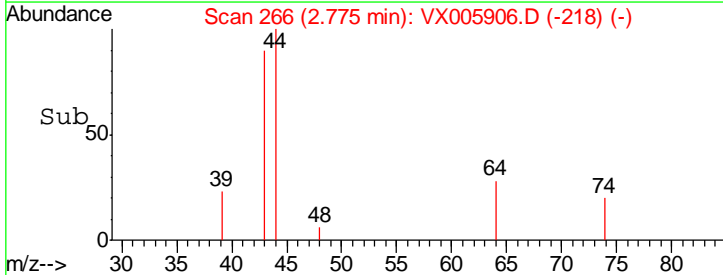
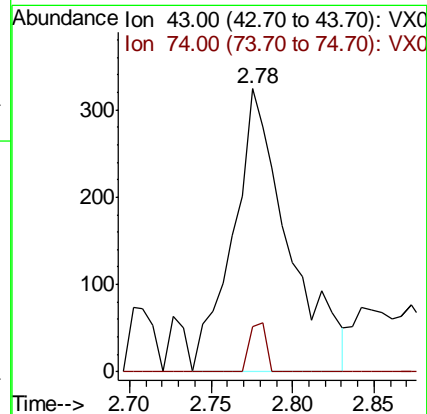
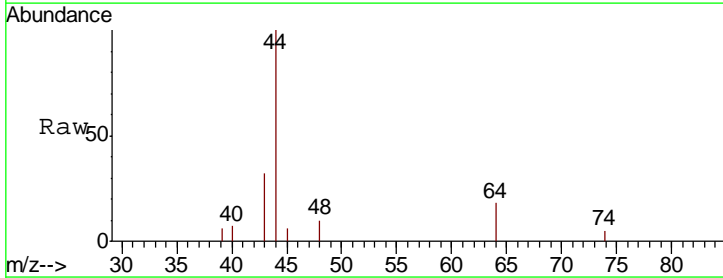
Instrument :  
 MSVOA\_X  
 ClientSampleID :  
 S36-0146

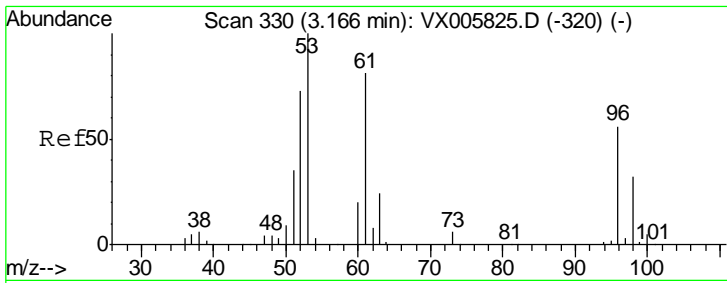
Tgt Ion: 43 Resp: 2419  
 Ion Ratio Lower Upper  
 43 100  
 58 27.2 23.8 35.6



#18  
 Methyl Acetate  
 Concen: Below Cal  
 RT: 2.78 min Scan# 266  
 Delta R.T. -0.01 min  
 Lab File: VX005906.D  
 Acq: 12 Nov 2018 17:47

Tgt Ion: 43 Resp: 766  
 Ion Ratio Lower Upper  
 43 100  
 74 5.1 16.8 25.2#

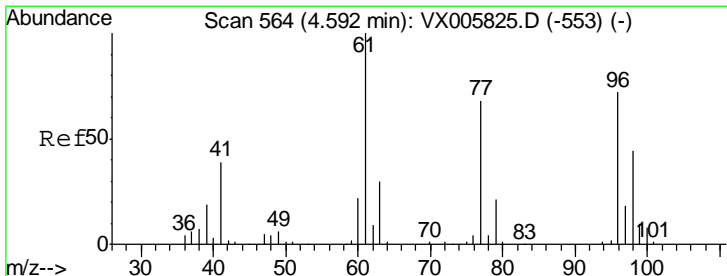
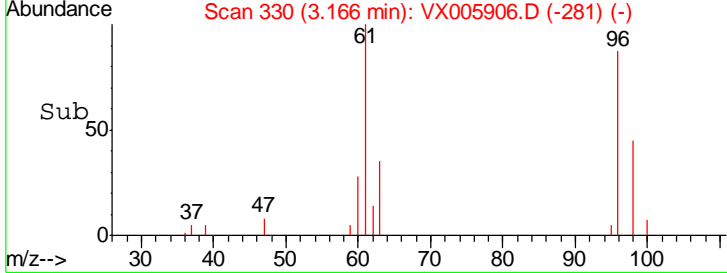
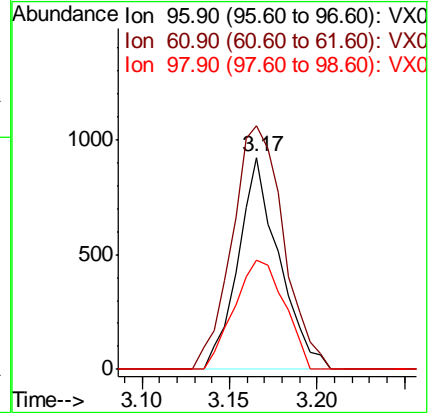
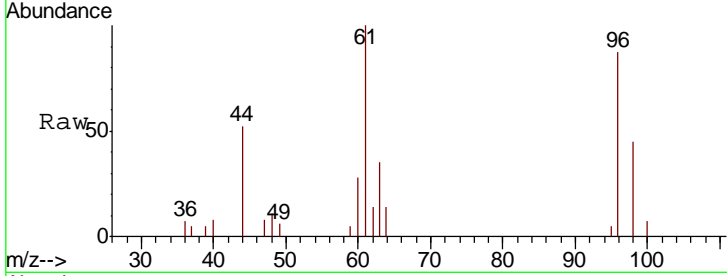




#21  
 trans-1,2-Dichloroethene  
 Concen: 1.394 ug/l  
 RT: 3.17 min Scan# 330  
 Delta R.T. -0.00 min  
 Lab File: VX005906.D  
 Acq: 12 Nov 2018 17:47

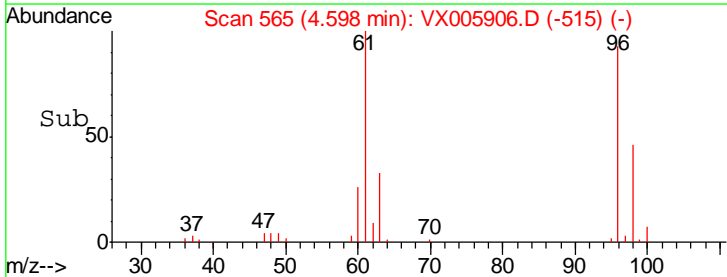
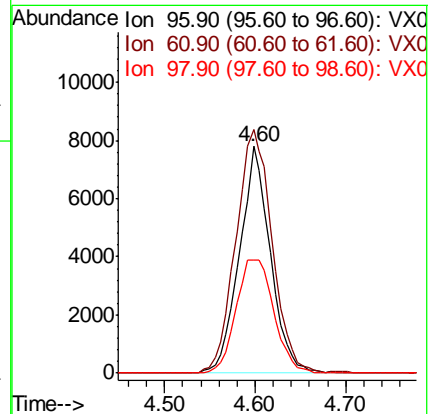
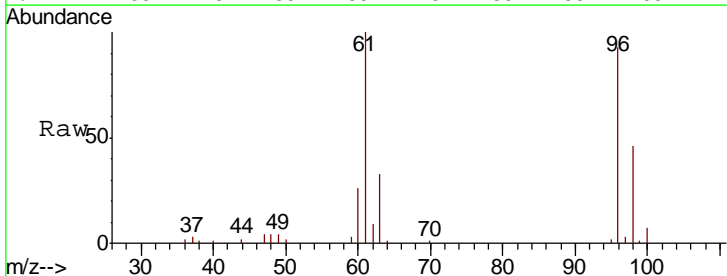
**Instrument :**  
 MSVOA\_X  
**ClientSampleID :**  
 S36-0146

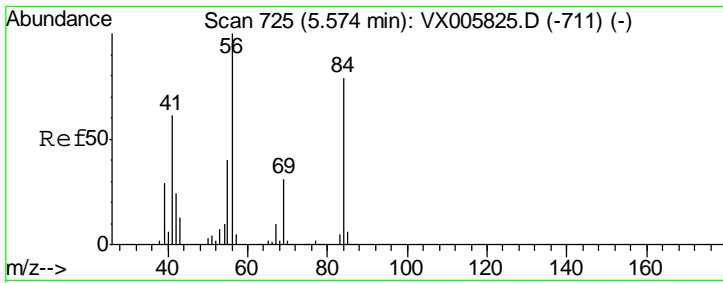
Tgt Ion	Resp	Lower	Upper
96	1504		
61	115.0	115.6	173.4#
98	51.7	50.2	75.2



#27  
 cis-1,2-Dichloroethene  
 Concen: 15.478 ug/l  
 RT: 4.60 min Scan# 565  
 Delta R.T. 0.01 min  
 Lab File: VX005906.D  
 Acq: 12 Nov 2018 17:47

Tgt Ion	Resp	Lower	Upper
96	18439		
61	125.7	0.0	304.6
98	61.0	0.0	127.4

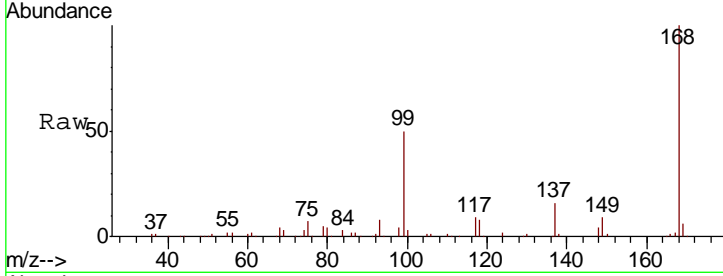




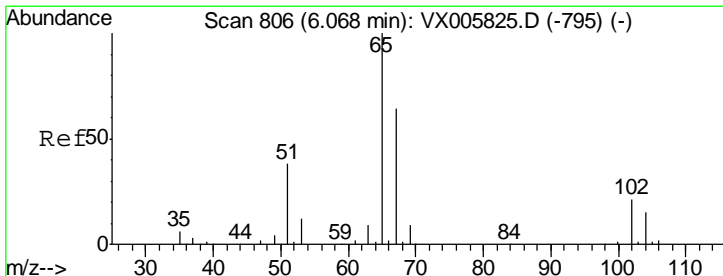
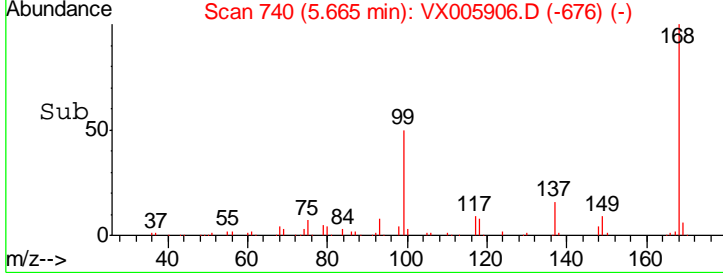
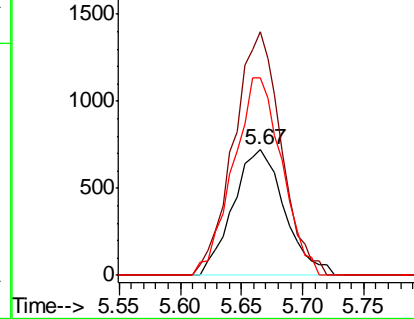
#31  
 Cyclohexane  
 Concen: 1.140 ug/l  
 RT: 5.67 min Scan# 740  
 Delta R.T. 0.09 min  
 Lab File: VX005906.D  
 Acq: 12 Nov 2018 17:47

Instrument :  
 MSVOA\_X  
 ClientSampled :  
 S36-0146

Tgt Ion	Resp	Lower	Upper
56	100		
69	194.3	22.6	34.0#
84	158.1	62.7	94.1#

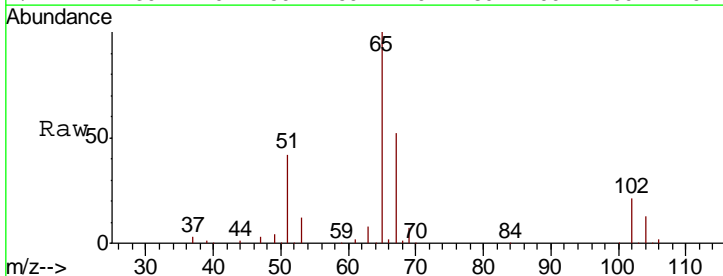


Abundance Ion 56.00 (55.70 to 56.70): VX0  
 Ion 69.00 (68.70 to 69.70): VX0  
 Ion 84.00 (83.70 to 84.70): VX0

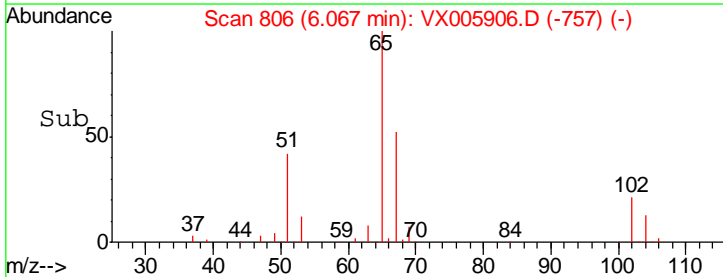
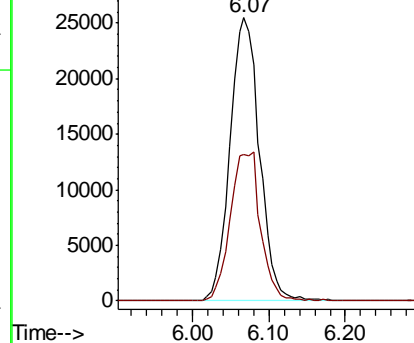


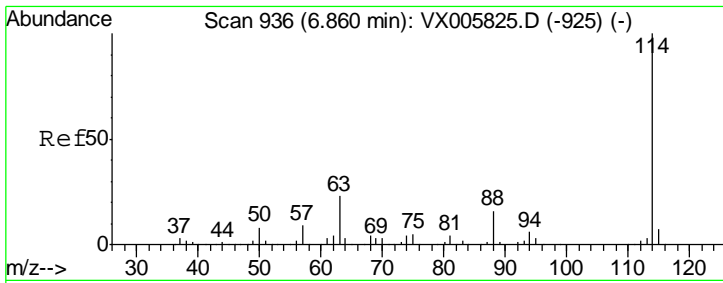
#33  
 1,2-Dichloroethane-d4  
 Concen: 51.115 ug/l  
 RT: 6.07 min Scan# 806  
 Delta R.T. -0.00 min  
 Lab File: VX005906.D  
 Acq: 12 Nov 2018 17:47

Tgt Ion	Resp	Lower	Upper
65	100		
67	53.8	0.0	105.0



Abundance Ion 64.90 (64.60 to 65.60): VX0  
 Ion 66.90 (66.60 to 67.60): VX0

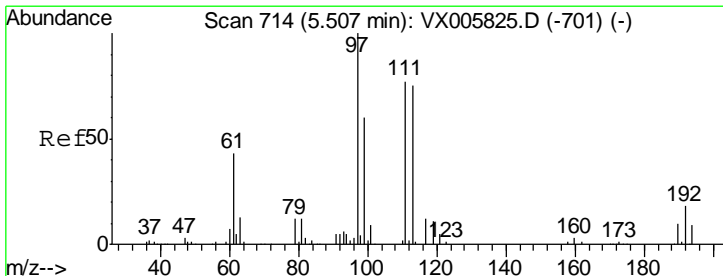
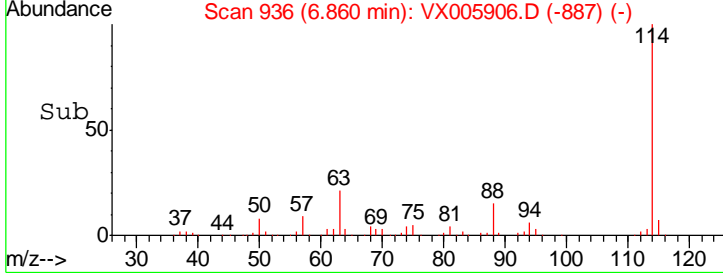
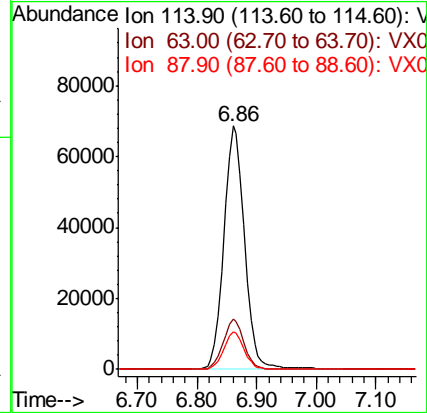
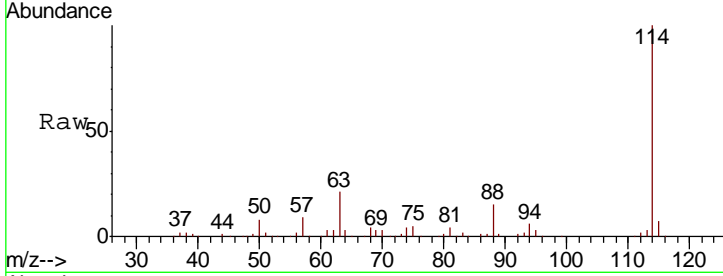




#34  
 1,4-Difluorobenzene  
 Concen: 50.000 ug/l  
 RT: 6.86 min Scan# 936  
 Delta R.T. -0.00 min  
 Lab File: VX005906.D  
 Acq: 12 Nov 2018 17:47

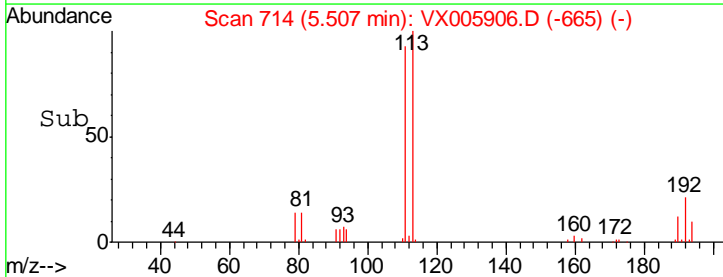
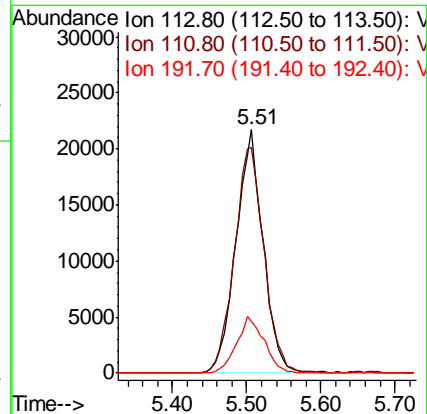
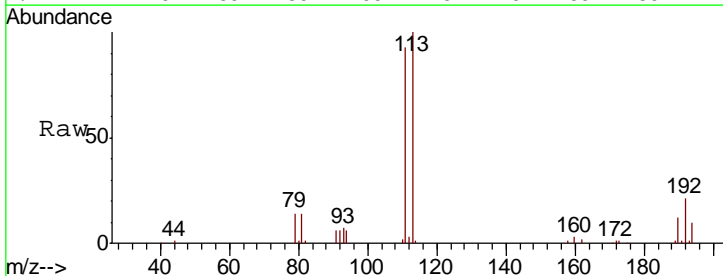
Instrument :  
 MSVOA\_X  
 ClientSampled :  
 S36-0146

Tgt Ion	Resp	Lower	Upper
114	165971		
63	20.7	0.0	42.8
88	15.5	0.0	31.2

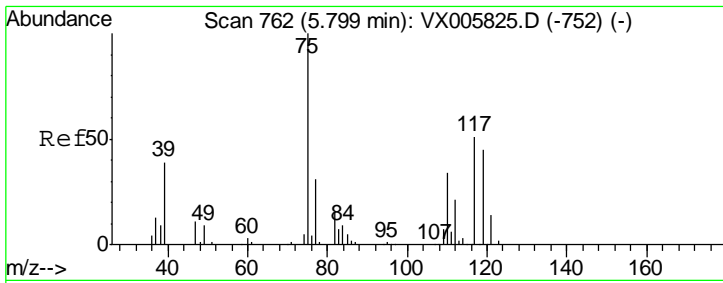


#35  
 Dibromofluoromethane  
 Concen: 49.162 ug/l  
 RT: 5.51 min Scan# 714  
 Delta R.T. -0.00 min  
 Lab File: VX005906.D  
 Acq: 12 Nov 2018 17:47

Tgt Ion	Resp	Lower	Upper
113	55497		
111	101.4	82.3	123.5
192	23.4	17.9	26.9



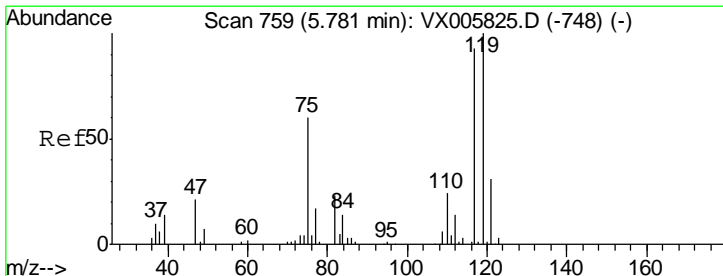
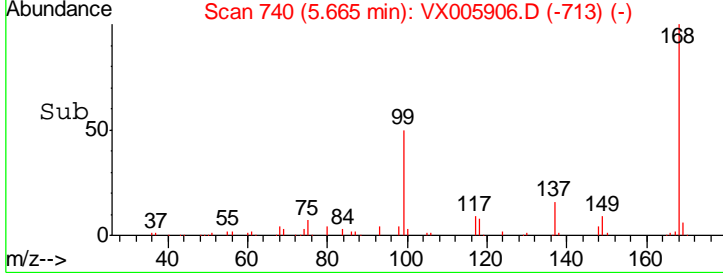
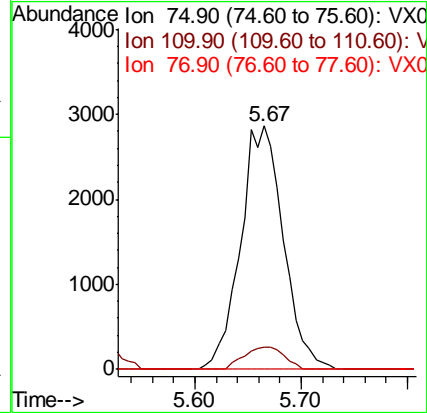
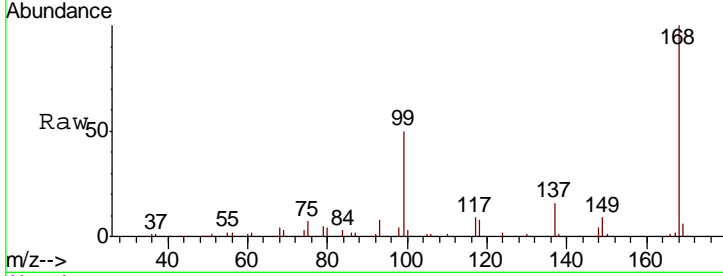




#36  
 1,1-Dichloropropene  
 Concen: 5.026 ug/l  
 RT: 5.67 min Scan# 740  
 Delta R.T. -0.13 min  
 Lab File: VX005906.D  
 Acq: 12 Nov 2018 17:47

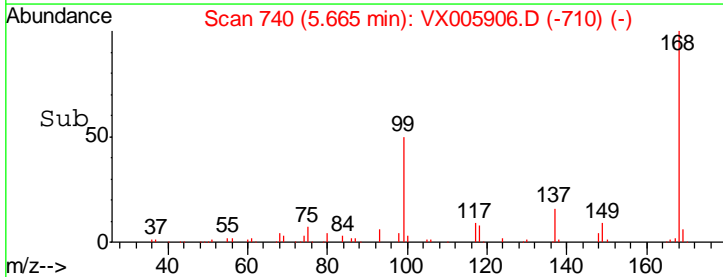
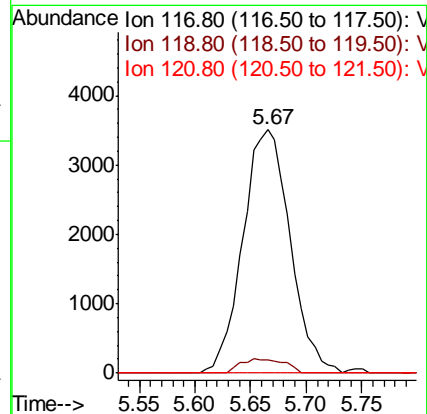
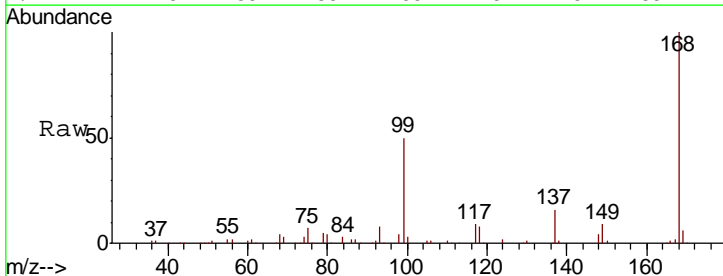
Instrument :  
 MSVOA\_X  
 ClientSampled :  
 S36-0146

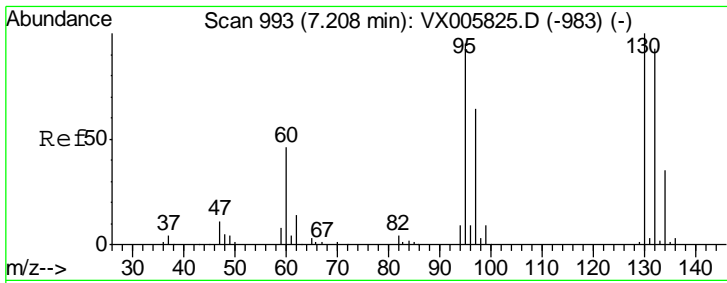
Tgt Ion	Resp	Lower	Upper
75	100		
110	8.6	17.4	52.2#
77	0.0	25.8	38.6#



#38  
 Carbon Tetrachloride  
 Concen: 6.461 ug/l  
 RT: 5.67 min Scan# 740  
 Delta R.T. -0.12 min  
 Lab File: VX005906.D  
 Acq: 12 Nov 2018 17:47

Tgt Ion	Resp	Lower	Upper
117	100		
119	5.6	78.1	117.1#
121	0.0	24.6	36.8#





#44

Trichloroethene

Concen: 0.355 ug/l

RT: 7.21 min Scan# 994

Delta R.T. 0.01 min

Lab File: VX005906.D

Acq: 12 Nov 2018 17:47

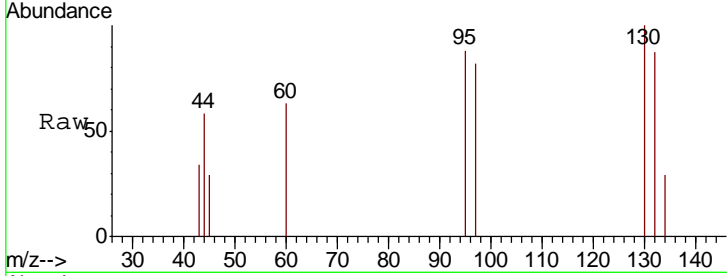
Instrument :  
MSVOA\_X  
ClientSampled :  
S36-0146

Tgt Ion: 130 Resp: 420

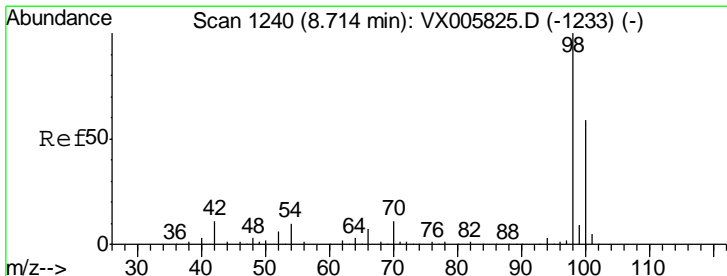
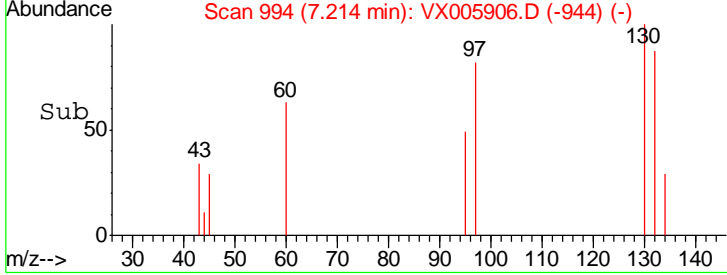
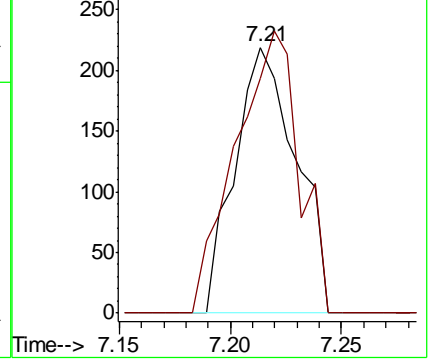
Ion Ratio Lower Upper

130 100

95 88.1 0.0 194.2



Abundance Ion 129.80 (129.50 to 130.50): V  
Ion 94.90 (94.60 to 95.60): VX0



#50

Toluene-d8

Concen: 53.037 ug/l

RT: 8.71 min Scan# 1240

Delta R.T. -0.00 min

Lab File: VX005906.D

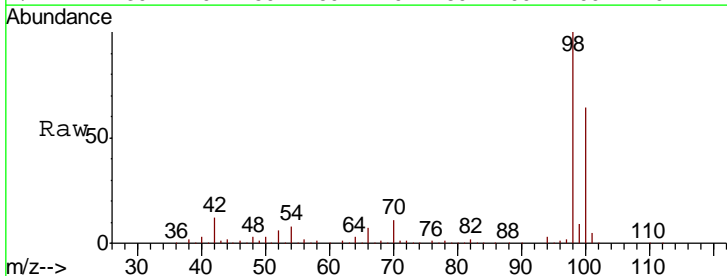
Acq: 12 Nov 2018 17:47

Tgt Ion: 98 Resp: 199047

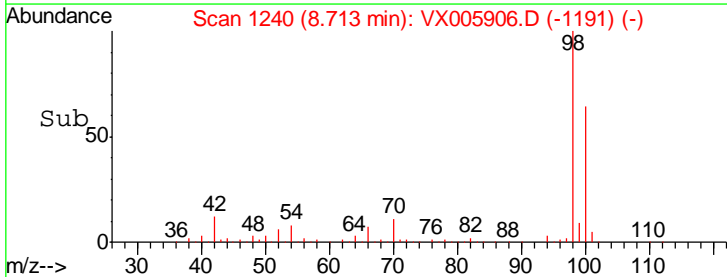
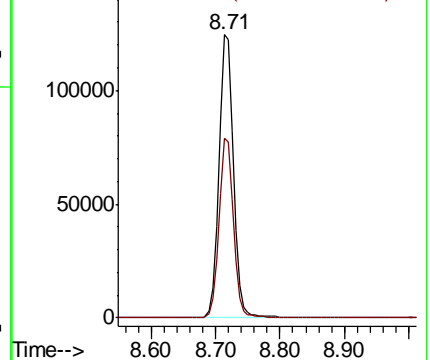
Ion Ratio Lower Upper

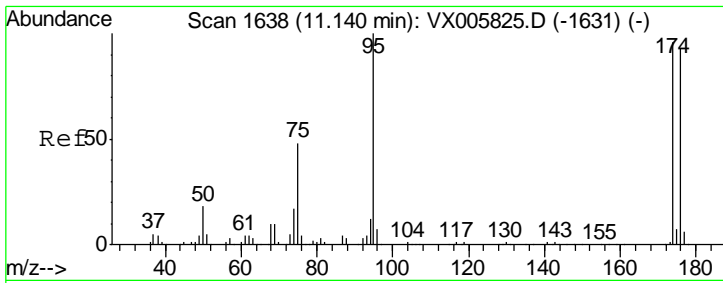
98 100

100 63.0 51.3 76.9



Abundance Ion 98.00 (97.70 to 98.70): VX0  
Ion 100.00 (99.70 to 100.70): V



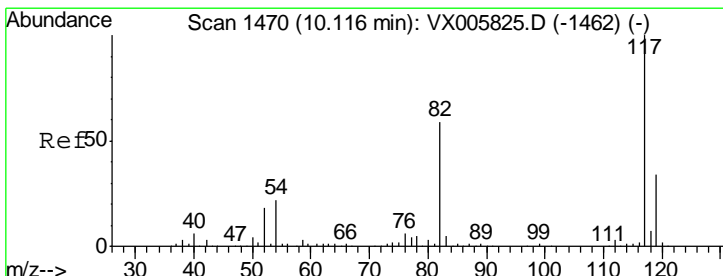
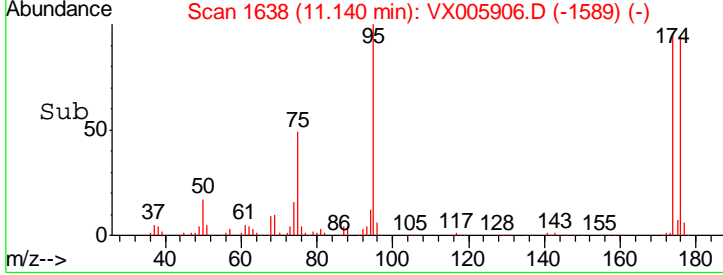
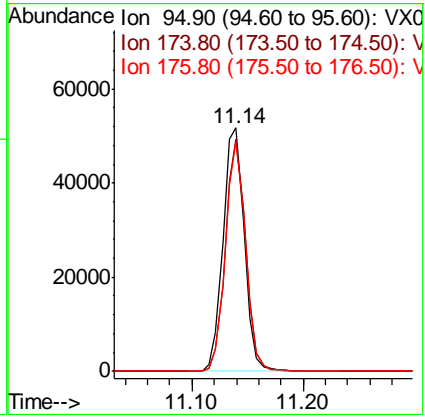
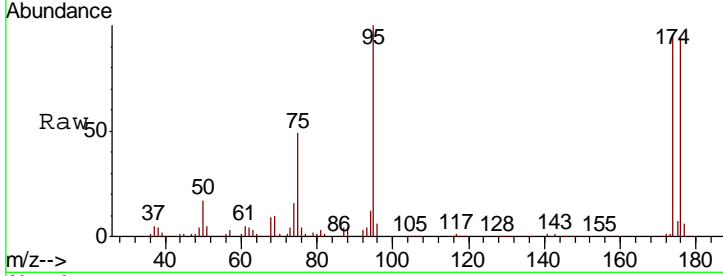


#62  
 4-Bromofluorobenzene  
 Concen: 50.602 ug/l  
 RT: 11.14 min Scan# 1638  
 Delta R.T. -0.00 min  
 Lab File: VX005906.D  
 Acq: 12 Nov 2018 17:47

Instrument : MSVOA\_X  
 ClientSampled : S36-0146

Tot Ion: 95 Resp: 68278

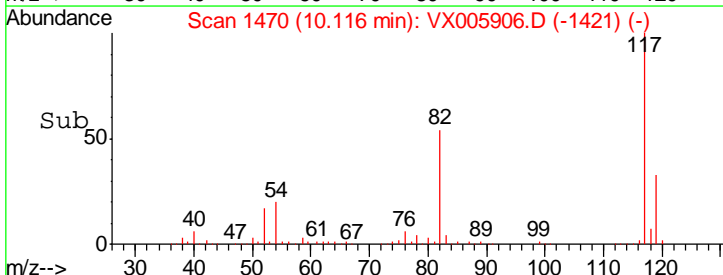
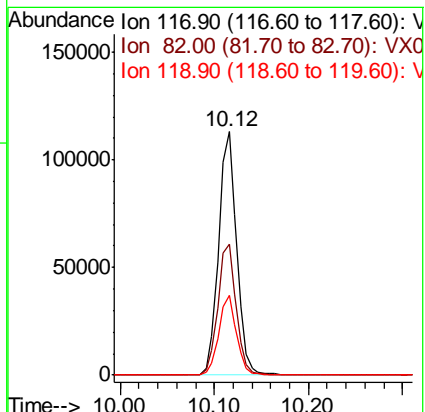
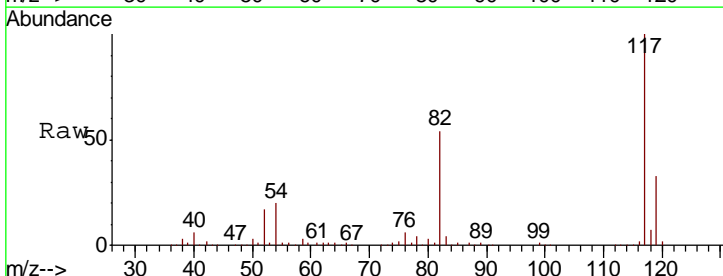
Ion	Ratio	Lower	Upper
95	100		
174	90.8	0.0	184.4
176	89.3	0.0	177.4

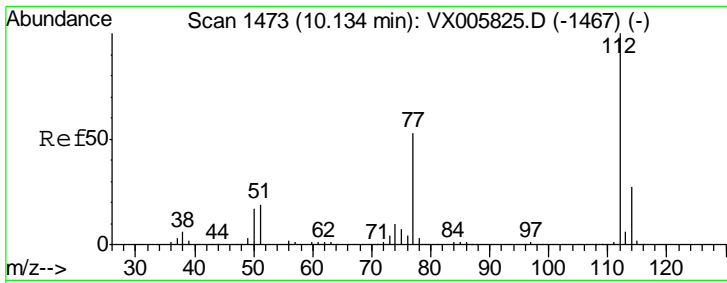


#63  
 Chlorobenzene-d5  
 Concen: 50.000 ug/l  
 RT: 10.12 min Scan# 1470  
 Delta R.T. -0.00 min  
 Lab File: VX005906.D  
 Acq: 12 Nov 2018 17:47

Tgt Ion: 117 Resp: 150470

Ion	Ratio	Lower	Upper
117	100		
82	53.6	44.1	66.1
119	32.7	26.2	39.2

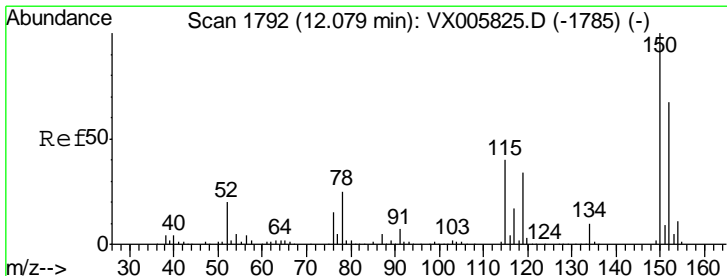
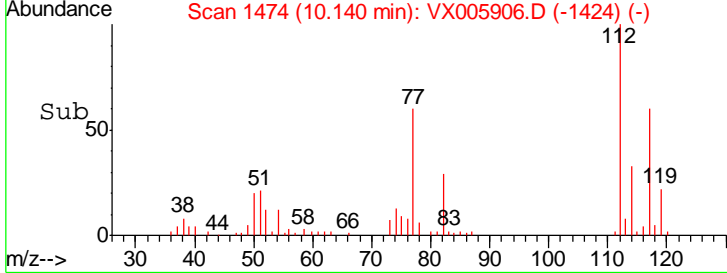
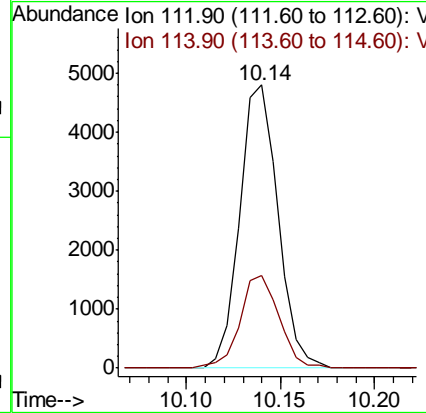
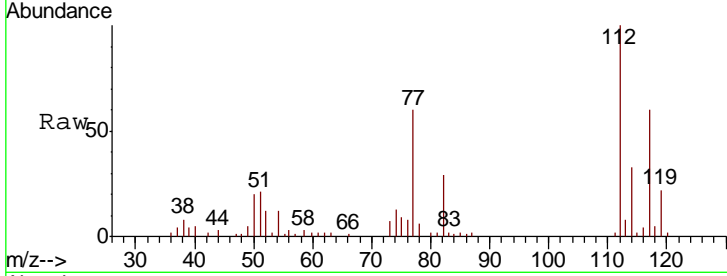




#65  
 Chlorobenzene  
 Concen: 2.243 ug/l  
 RT: 10.14 min Scan# 1474  
 Delta R.T. 0.01 min  
 Lab File: VX005906.D  
 Acq: 12 Nov 2018 17:47

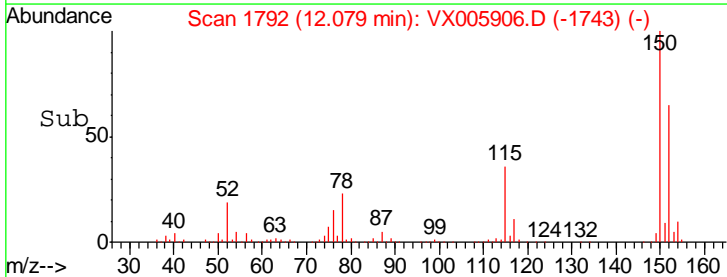
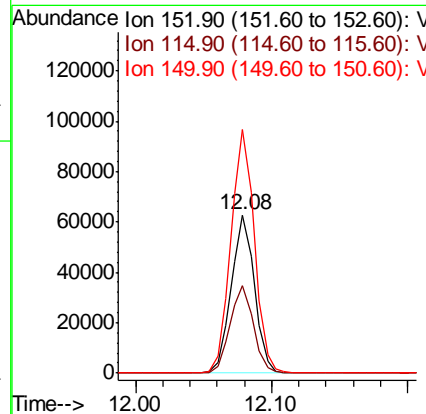
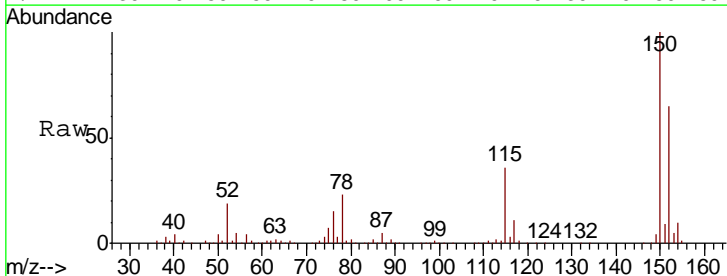
Instrument : MSVOA\_X  
 ClientSampled : S36-0146

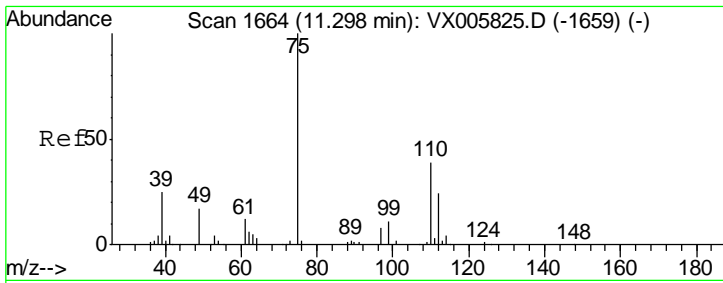
Tgt Ion	Resp	Lower	Upper
112	6762		
114	32.9	25.8	38.6



#72  
 1,4-Dichlorobenzene-d4  
 Concen: 50.000 ug/l  
 RT: 12.08 min Scan# 1792  
 Delta R.T. -0.00 min  
 Lab File: VX005906.D  
 Acq: 12 Nov 2018 17:47

Tgt Ion	Resp	Lower	Upper
152	74135		
115	55.5	39.4	118.1
150	155.8	0.0	346.4

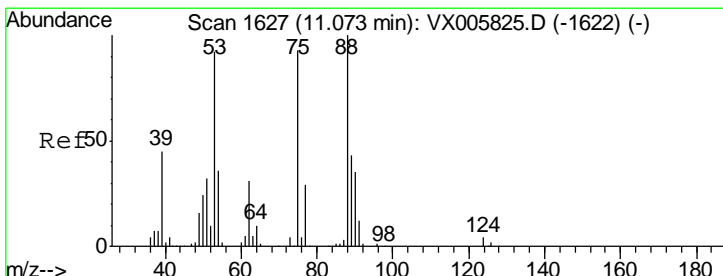
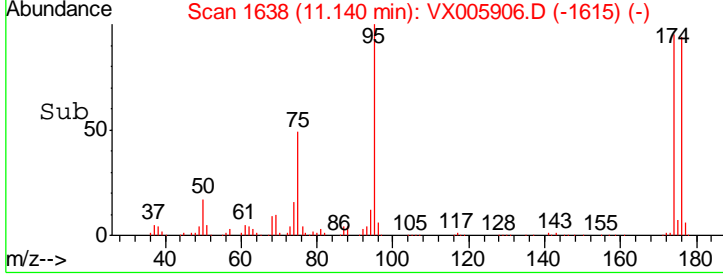
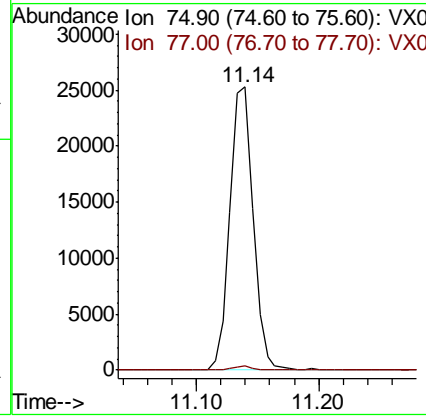
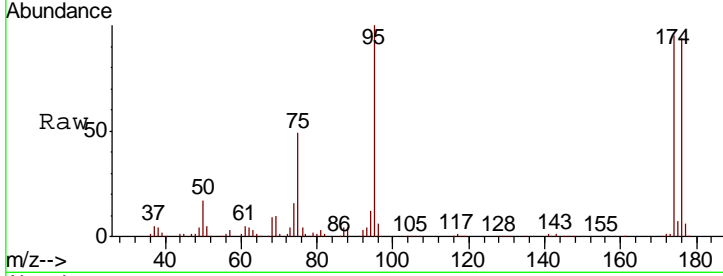




#76  
 1,2,3-Trichloropropane  
 Concen: 22.124 ug/l  
 RT: 11.14 min Scan# 1638  
 Delta R.T. -0.16 min  
 Lab File: VX005906.D  
 Acq: 12 Nov 2018 17:47

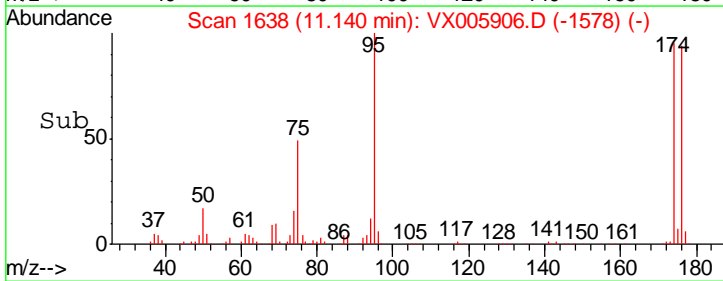
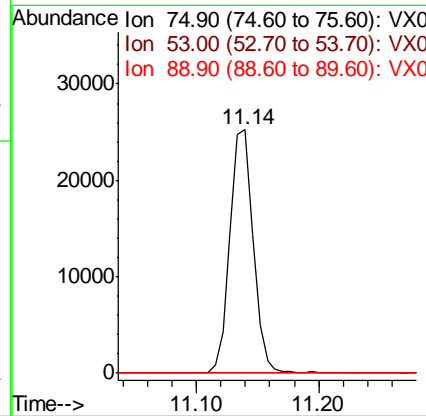
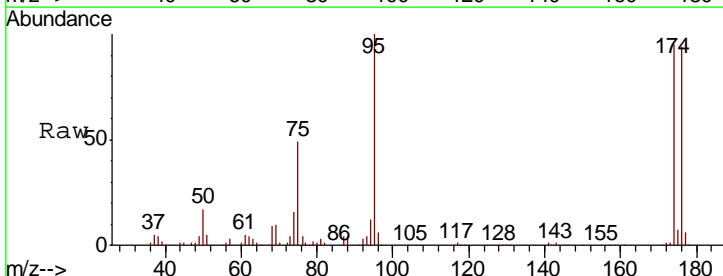
Instrument :  
 MSVOA\_X  
 Client Sampled :  
 S36-0146

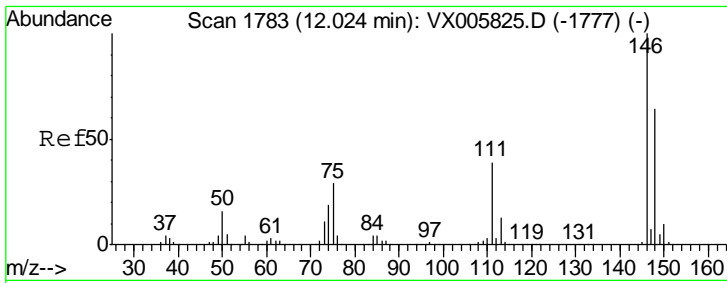
Tgt Ion: 75 Resp: 33397  
 Ion Ratio Lower Upper  
 75 100  
 77 1.1 20.5 61.6#



#81  
 trans-1,4-Dichloro-2-butene  
 Concen: 70.512 ug/l  
 RT: 11.14 min Scan# 1638  
 Delta R.T. 0.07 min  
 Lab File: VX005906.D  
 Acq: 12 Nov 2018 17:47

Tgt Ion: 75 Resp: 33397  
 Ion Ratio Lower Upper  
 75 100  
 53 0.0 80.2 120.2#  
 89 0.0 39.8 59.8#

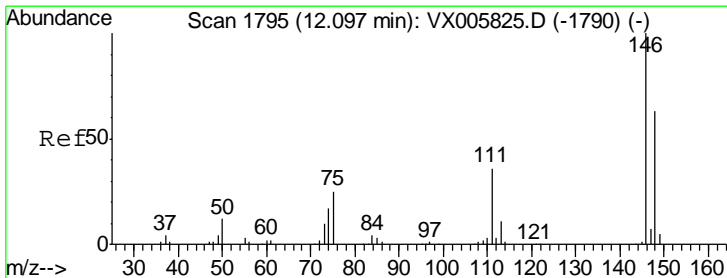
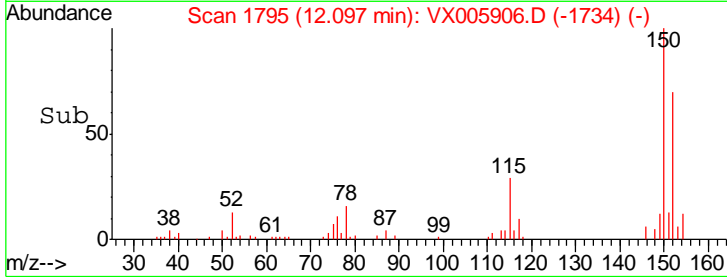
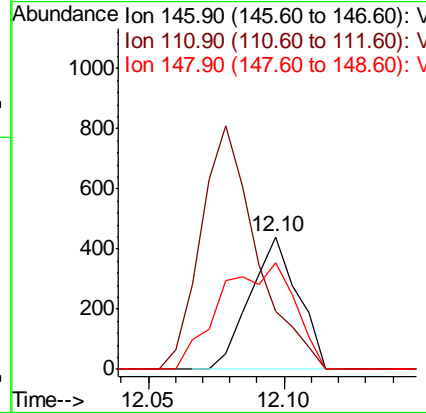
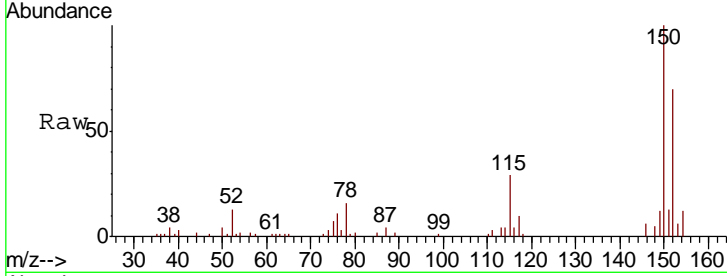




#87  
 1,3-Dichlorobenzene  
 Concen: 0.231 ug/l  
 RT: 12.10 min Scan# 1795  
 Delta R.T. 0.07 min  
 Lab File: VX005906.D  
 Acq: 12 Nov 2018 17:47

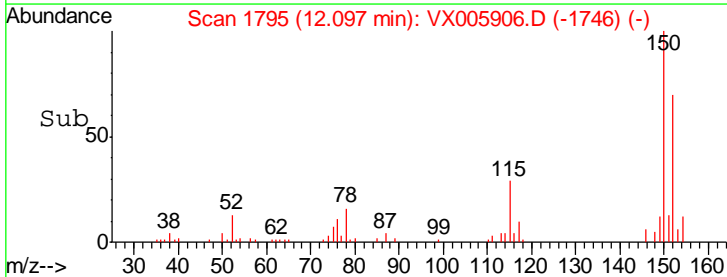
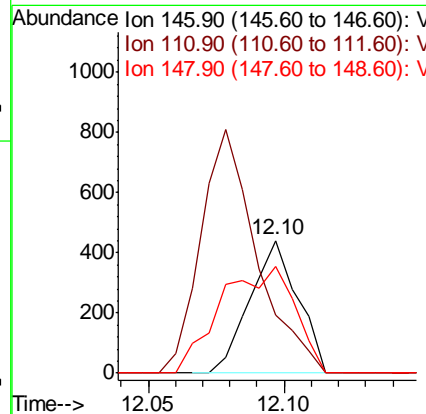
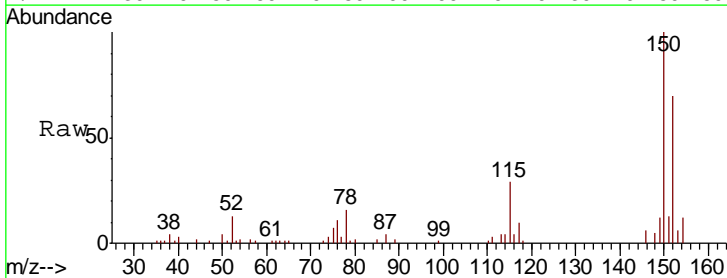
Instrument : MSVOA\_X  
 ClientSampled : S36-0146

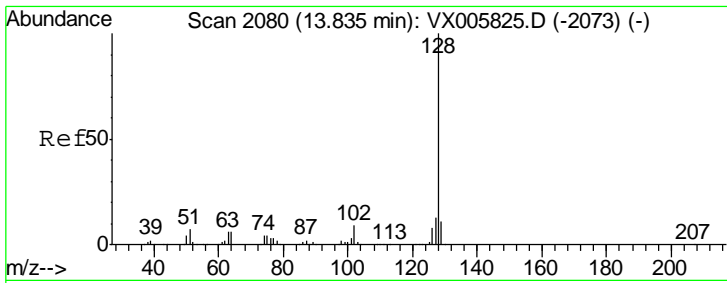
Tgt Ion	Resp	Lower	Upper
146	100		
111	215.7	19.0	57.0#
148	124.9	31.9	95.9#



#88  
 1,4-Dichlorobenzene  
 Concen: 0.225 ug/l  
 RT: 12.10 min Scan# 1795  
 Delta R.T. -0.00 min  
 Lab File: VX005906.D  
 Acq: 12 Nov 2018 17:47

Tgt Ion	Resp	Lower	Upper
146	100		
111	215.7	18.6	55.8#
148	124.9	32.1	96.3#





#95  
 Naphthalene  
 Concen: 1.204 ug/l  
 RT: 13.83 min Scan# 2080  
 Delta R.T. 0.00 min  
 Lab File: VX005906.D  
 Acq: 12 Nov 2018 17:47

Instrument : MSVOA\_X  
 ClientSampled : S36-0146

Tot Ion	Ratio	Lower	Upper
128	100		
127	0.0	10.4	15.6#
129	0.0	8.7	13.1#

