

Data Path : Z:\VOASRV\HPCHEM1\MSVOA X\DATA\VX111218\
 Data File : VX005913.D
 Acq On : 12 Nov 2018 20:54
 Operator : JC/MD
 Sample : J5912-09
 Misc : 5.0mL/MSVOA X/WATER
 ALS Vial : 23 Sample Multiplier: 1

Instrument :
 MSVOA_X
 ClientSampleId :
 SS003EW296-181109

Quant Time: Nov 13 04:44:20 2018
 Quant Method : Z:\VOASRV\HPCHEM1\MSVOA_X\METHOD\82X110718W.M
 Quant Title : SW846 8260
 QLast Update : Wed Nov 07 14:40:53 2018
 Response via : Initial Calibration

Internal Standards	R.T.	QIon	Response	Conc	Units	Dev(Min)
1) Pentafluorobenzene	5.67	168	108110	50.00	ug/l	0.00
34) 1,4-Difluorobenzene	6.86	114	157747	50.00	ug/l	0.00
63) Chlorobenzene-d5	10.12	117	142483	50.00	ug/l	0.00
72) 1,4-Dichlorobenzene-d4	12.08	152	70830	50.00	ug/l	0.00

System Monitoring Compounds

33) 1,2-Dichloroethane-d4	6.07	65	65692	52.86	ug/l	0.00
Spiked Amount	50.000		Recovery	=	105.72%	
35) Dibromofluoromethane	5.50	113	53239	49.62	ug/l	0.00
Spiked Amount	50.000		Recovery	=	99.24%	
50) Toluene-d8	8.71	98	190403	53.38	ug/l	0.00
Spiked Amount	50.000		Recovery	=	106.76%	
62) 4-Bromofluorobenzene	11.14	95	64727	50.47	ug/l	0.00
Spiked Amount	50.000		Recovery	=	100.94%	

Target Compounds

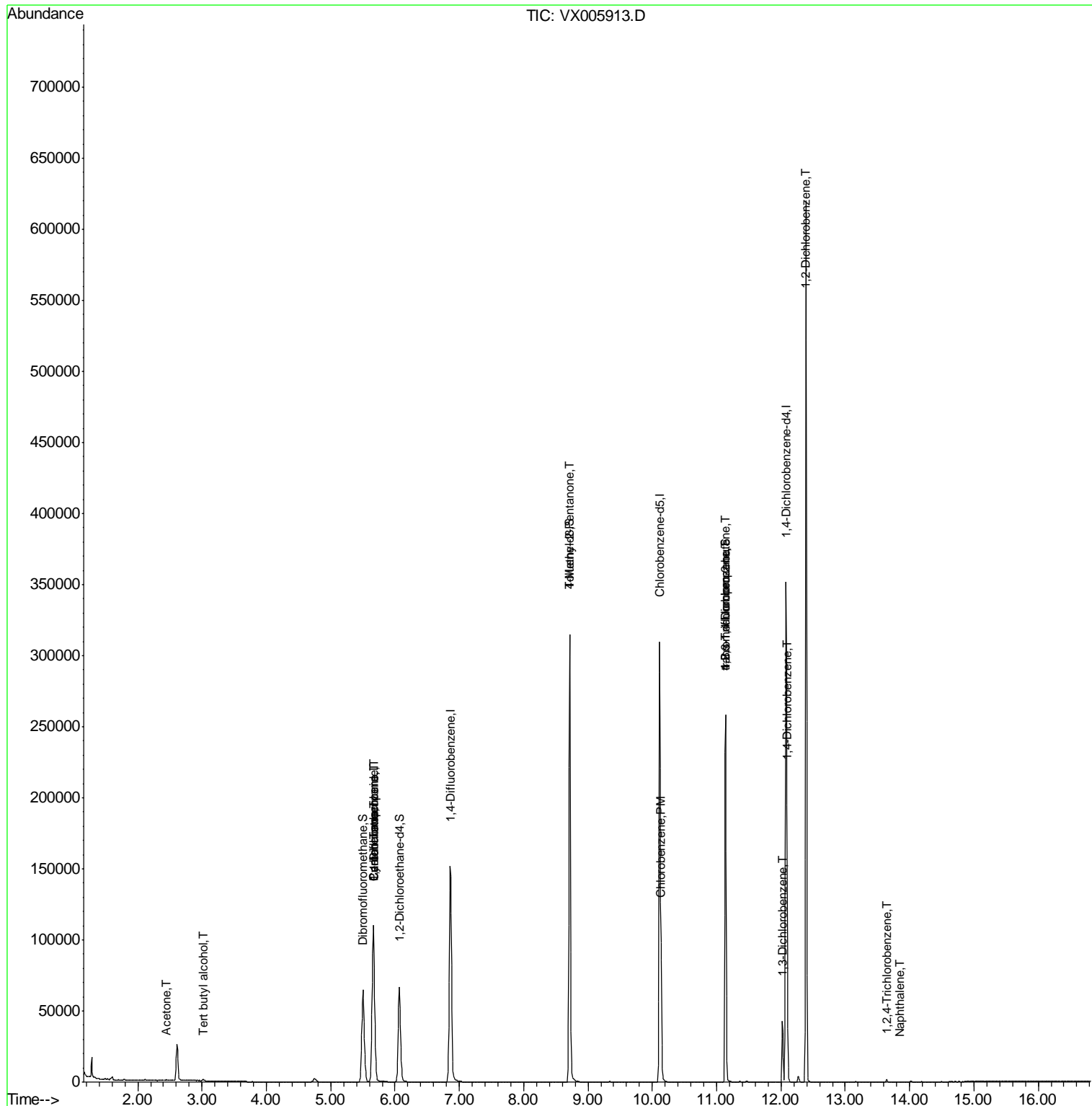
						Qvalue
11) Tert butyl alcohol	3.03	59	687	1.930	ug/l #	72
16) Acetone	2.44	43	743	1.110	ug/l	94
18) Methyl Acetate	2.78	43	655	Below Cal	#	55
31) Cyclohexane	5.66	56	1963	1.134	ug/l #	1
36) 1,1-Dichloropropene	5.67	75	7468	4.911	ug/l #	49
38) Carbon Tetrachloride	5.67	117	9663	6.347	ug/l #	15
51) 4-Methyl-2-Pentanone	8.71	43	848	0.464	ug/l #	1
65) Chlorobenzene	10.14	112	35278	12.359	ug/l	99
76) 1,2,3-Trichloropropane	11.14	75	32873	22.793	ug/l #	36
81) trans-1,4-Dichloro-2-buten	11.14	75	32873	72.644	ug/l #	9
84) 1,2,4-Trimethylbenzene	11.81	105	81	Below Cal	#	31
87) 1,3-Dichlorobenzene	12.02	146	14434	6.515	ug/l	99
88) 1,4-Dichlorobenzene	12.10	146	39294	17.324	ug/l	98
91) 1,2-Dichlorobenzene	12.39	146	201185	90.640	ug/l	100
93) 1,2,4-Trichlorobenzene	13.65	180	563	0.360	ug/l	94
95) Naphthalene	13.83	128	186	1.213	ug/l #	69

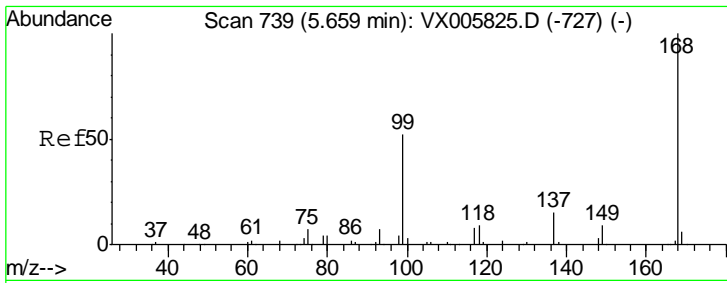
(#) = qualifier out of range (m) = manual integration (+) = signals summed

Data Path : Z:\VOASRV\HPCHEM1\MSVOA X\DATA\VX111218\
 Data File : VX005913.D
 Acq On : 12 Nov 2018 20:54
 Operator : JC/MD
 Sample : J5912-09
 Misc : 5.0mL/MSVOA X/WATER
 ALS Vial : 23 Sample Multiplier: 1

Instrument :
 MSVOA_X
 ClientSampleId :
 SS003EW296-181109

Quant Time: Nov 13 04:44:20 2018
 Quant Method : Z:\VOASRV\HPCHEM1\MSVOA_X\METHOD\82X110718W.M
 Quant Title : SW846 8260
 QLast Update : Wed Nov 07 14:40:53 2018
 Response via : Initial Calibration

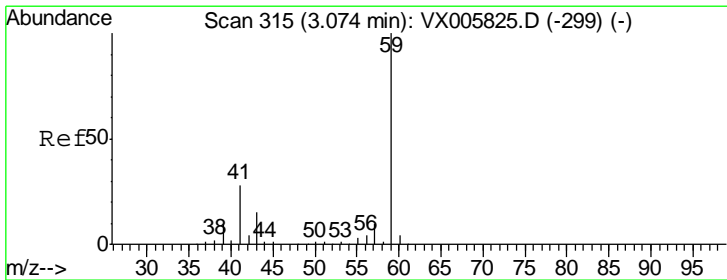
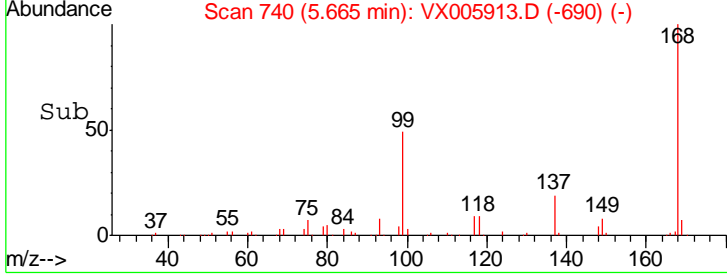
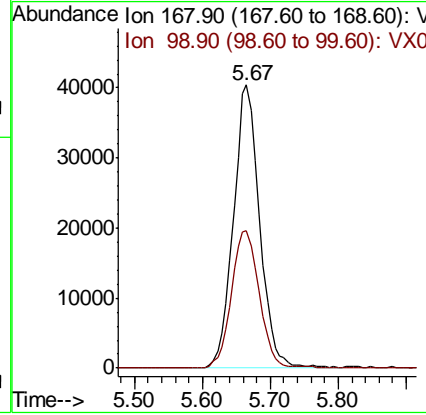
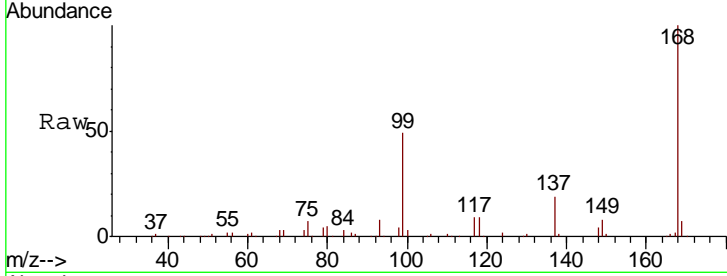




#1
 Pentafluorobenzene
 Concen: 50.000 ug/l
 RT: 5.67 min Scan# 740
 Delta R.T. 0.01 min
 Lab File: VX005913.D
 Acq: 12 Nov 2018 20:54

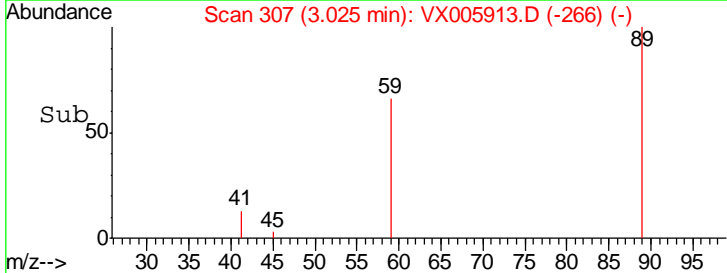
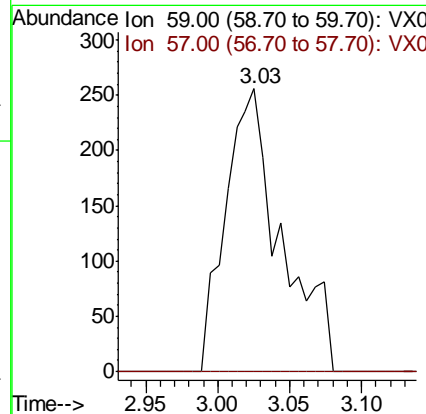
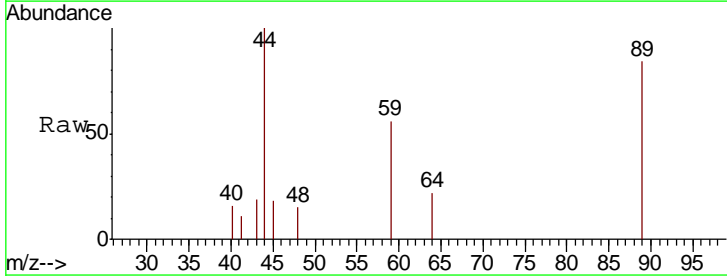
Instrument : MSVOA_X
 ClientSampleId : SS003EW296-181109

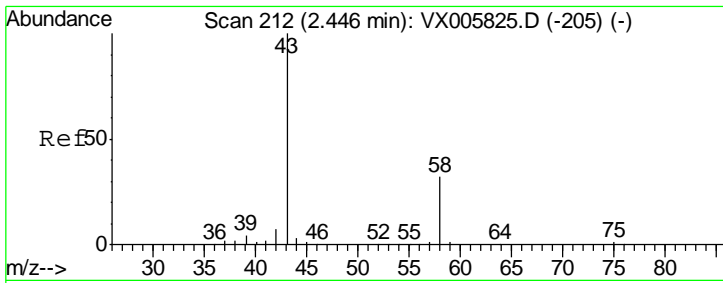
Tgt Ion	Resp	Lower	Upper
168	108110		
99	48.8	40.7	61.1



#11
 Tert butyl alcohol
 Concen: 1.930 ug/l
 RT: 3.03 min Scan# 307
 Delta R.T. -0.05 min
 Lab File: VX005913.D
 Acq: 12 Nov 2018 20:54

Tgt Ion	Resp	Lower	Upper
59	687		
57	0.0	8.5	12.7#

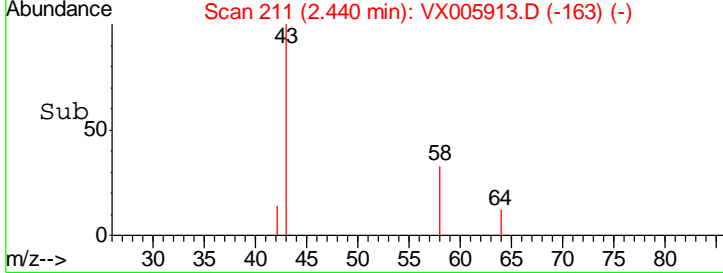
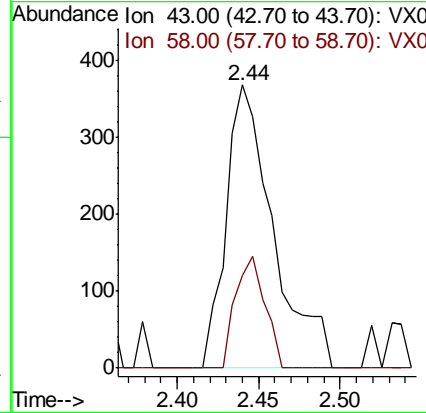
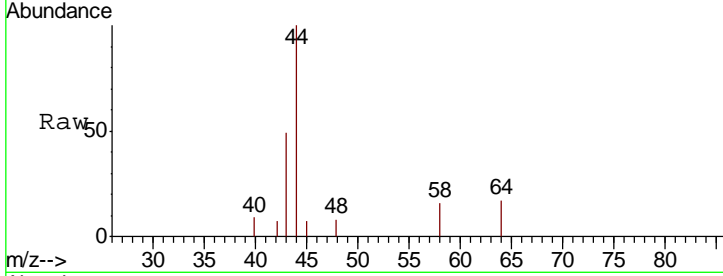




#16
 Acetone
 Concen: 1.110 ug/l
 RT: 2.44 min Scan# 211
 Delta R.T. -0.01 min
 Lab File: VX005913.D
 Acq: 12 Nov 2018 20:54

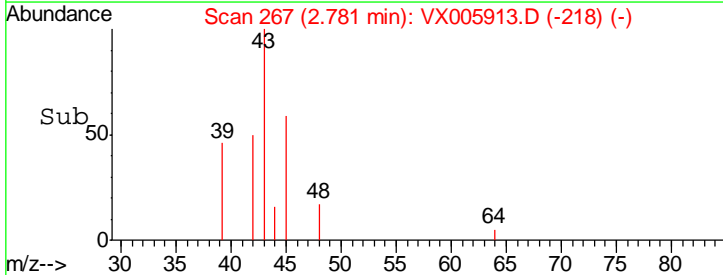
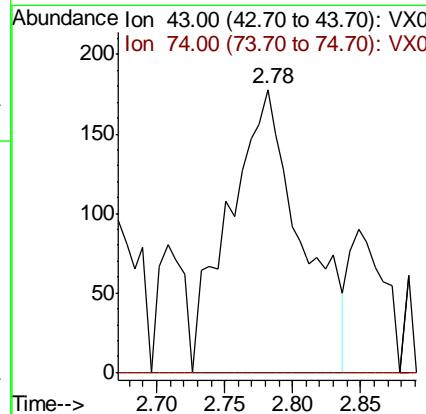
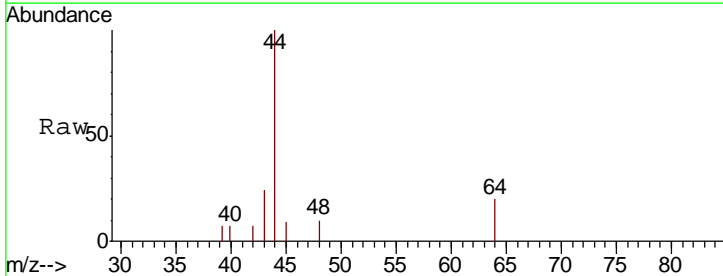
Instrument :
 MSVOA_X
ClientSampled :
 SS003EW296-181109

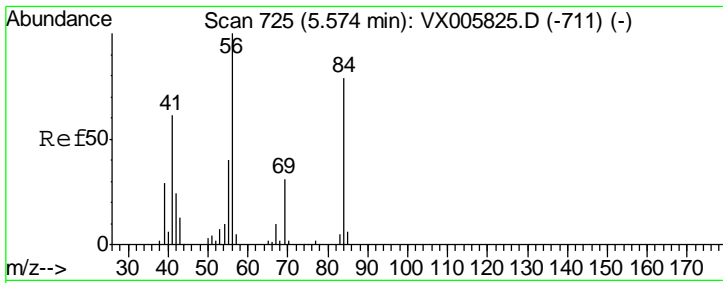
Tgt Ion	Resp	Lower	Upper
43	100		
58	32.9	23.8	35.6



#18
 Methyl Acetate
 Concen: Below Cal
 RT: 2.78 min Scan# 267
 Delta R.T. 0.00 min
 Lab File: VX005913.D
 Acq: 12 Nov 2018 20:54

Tgt Ion	Resp	Lower	Upper
43	100		
74	0.0	16.8	25.2#

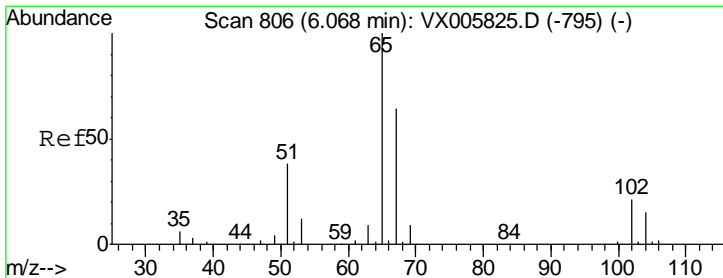
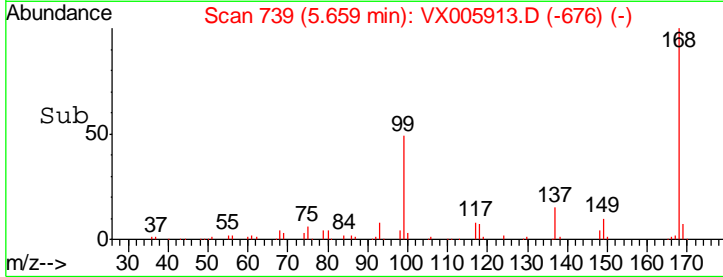
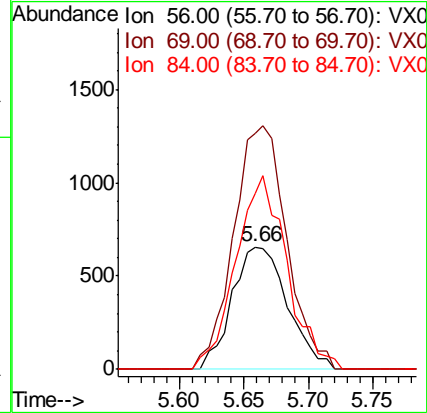
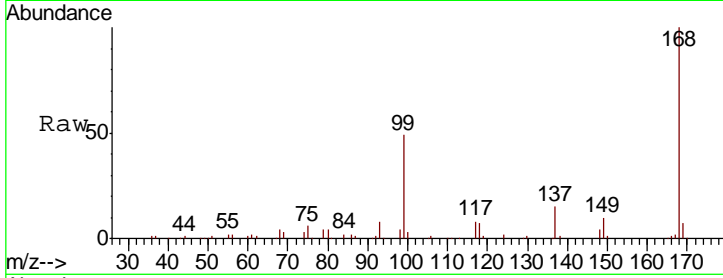




#31
 Cyclohexane
 Concen: 1.134 ug/l
 RT: 5.66 min Scan# 739
 Delta R.T. 0.09 min
 Lab File: VX005913.D
 Acq: 12 Nov 2018 20:54

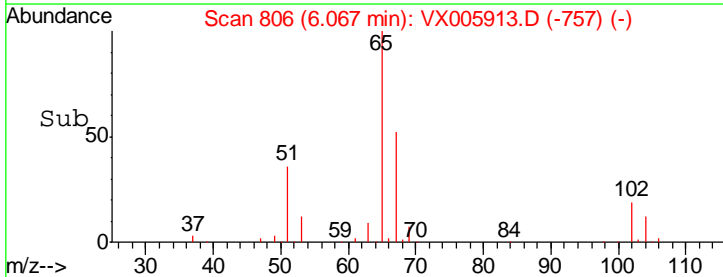
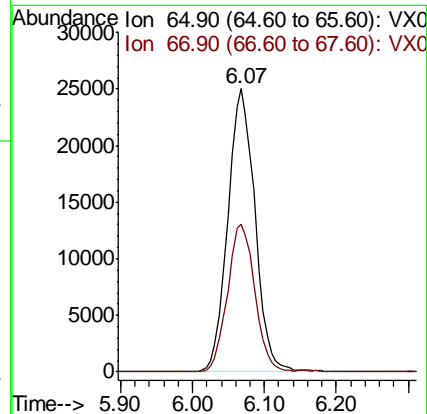
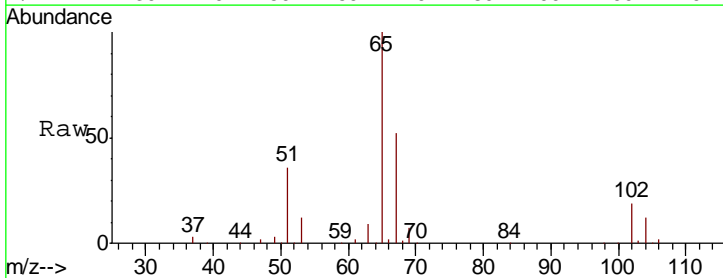
Instrument :
 MSVOA_X
 ClientSampleID :
 SS003EW296-181109

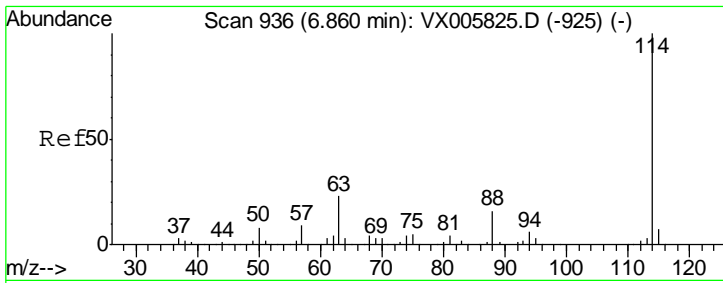
Tgt Ion	Resp	Lower	Upper
56	1963		
69	193.1	22.6	34.0#
84	143.8	62.7	94.1#



#33
 1,2-Dichloroethane-d4
 Concen: 52.855 ug/l
 RT: 6.07 min Scan# 806
 Delta R.T. -0.00 min
 Lab File: VX005913.D
 Acq: 12 Nov 2018 20:54

Tgt Ion	Resp	Lower	Upper
65	65692		
67	52.9	0.0	105.0

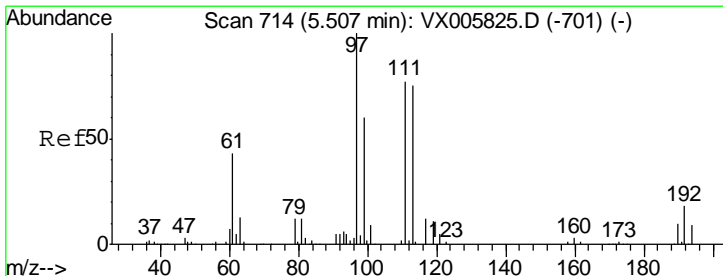
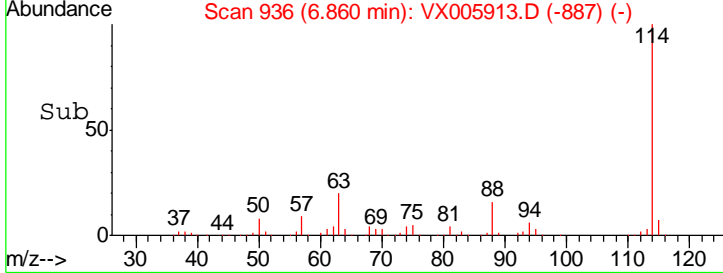
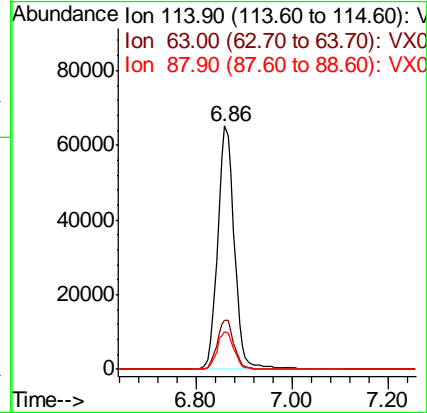
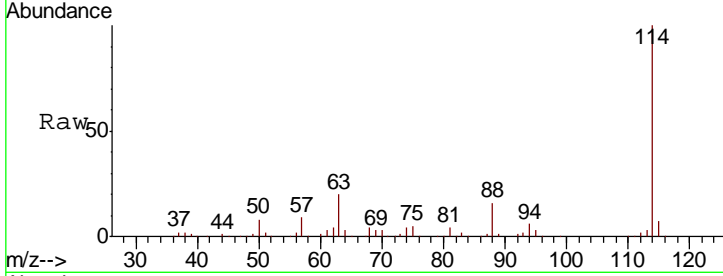




#34
 1,4-Difluorobenzene
 Concen: 50.000 ug/l
 RT: 6.86 min Scan# 936
 Delta R.T. -0.00 min
 Lab File: VX005913.D
 Acq: 12 Nov 2018 20:54

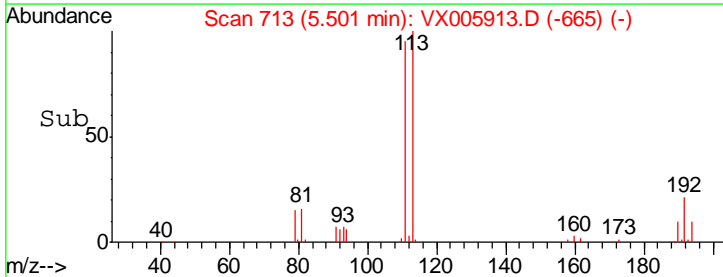
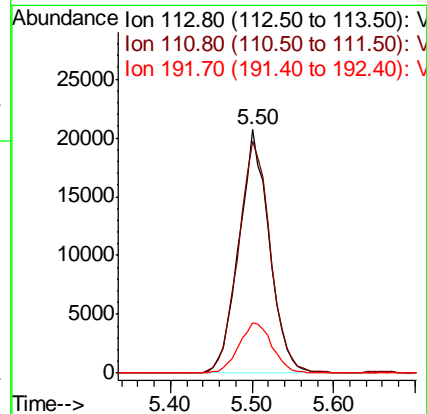
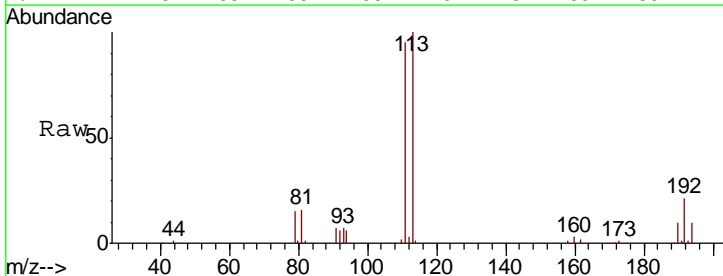
Instrument :
 MSVOA_X
 ClientSampleId :
 SS003EW296-181109

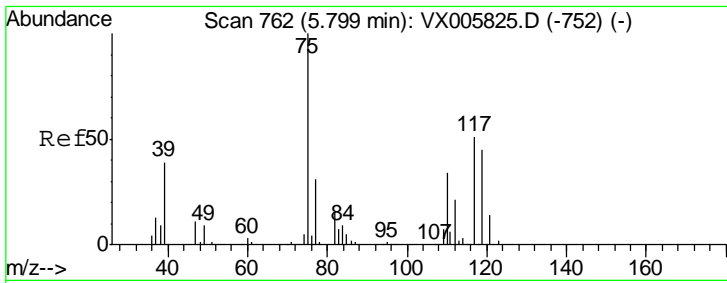
Tgt Ion	Resp	Lower	Upper
114	157747		
63	20.4	0.0	42.8
88	15.5	0.0	31.2



#35
 Dibromofluoromethane
 Concen: 49.621 ug/l
 RT: 5.50 min Scan# 713
 Delta R.T. -0.01 min
 Lab File: VX005913.D
 Acq: 12 Nov 2018 20:54

Tgt Ion	Resp	Lower	Upper
113	53239		
111	100.7	82.3	123.5
192	22.6	17.9	26.9

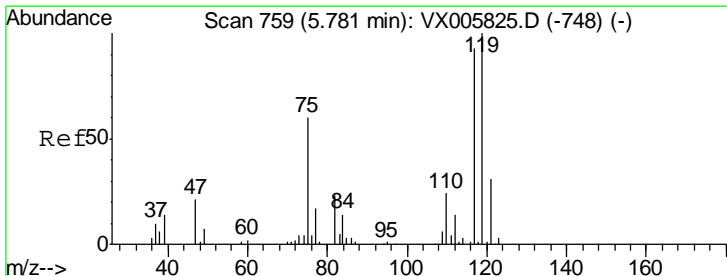
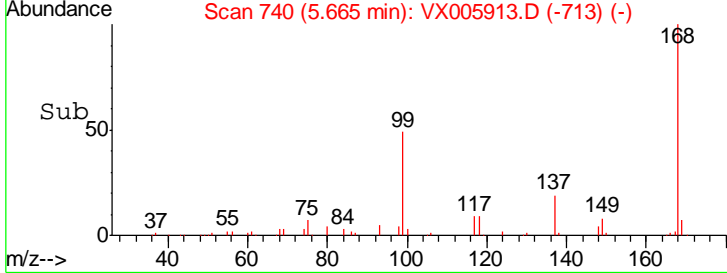
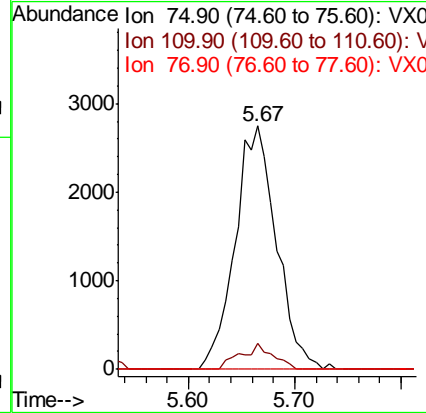
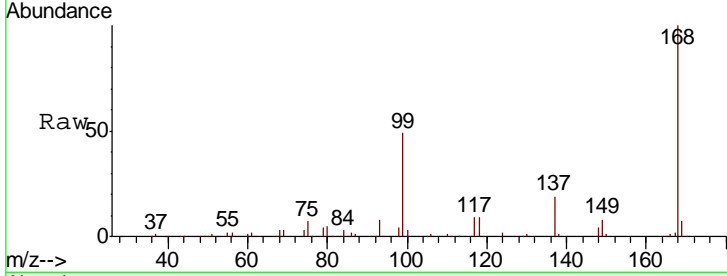




#36
 1,1-Dichloropropene
 Concen: 4.911 ug/l
 RT: 5.67 min Scan# 740
 Delta R.T. -0.13 min
 Lab File: VX005913.D
 Acq: 12 Nov 2018 20:54

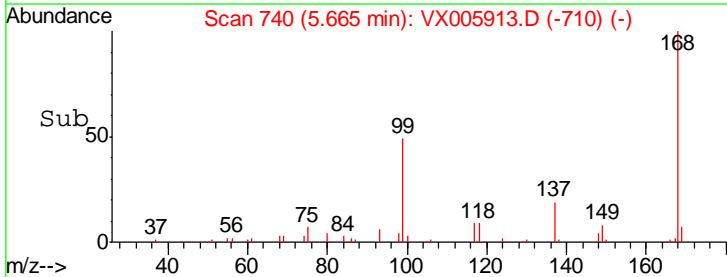
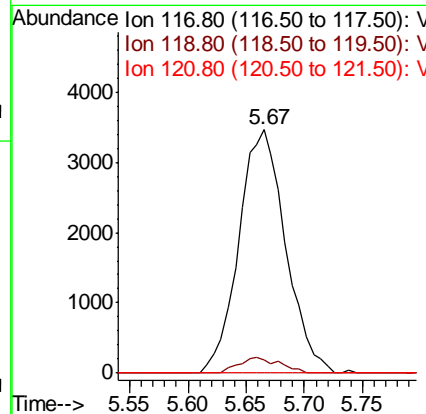
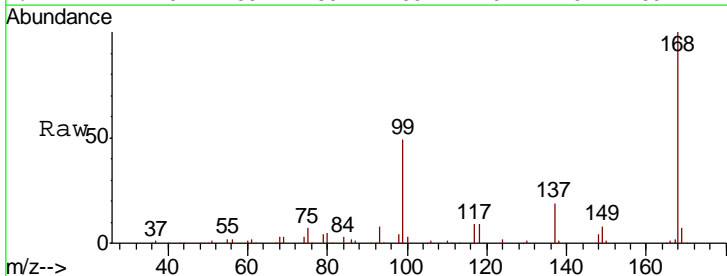
Instrument :
 MSVOA_X
ClientSampled :
 SS003EW296-181109

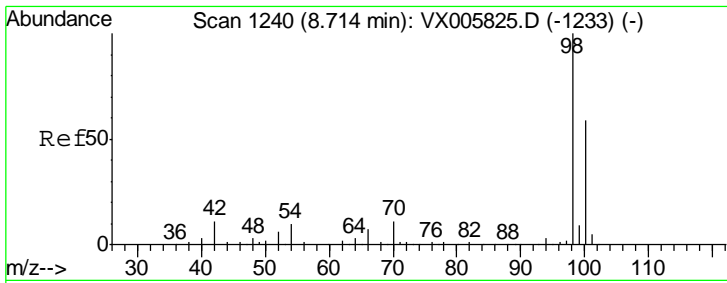
Tgt Ion	Resp	Lower	Upper
75	100		
110	8.3	17.4	52.2#
77	0.0	25.8	38.6#



#38
 Carbon Tetrachloride
 Concen: 6.347 ug/l
 RT: 5.67 min Scan# 740
 Delta R.T. -0.12 min
 Lab File: VX005913.D
 Acq: 12 Nov 2018 20:54

Tgt Ion	Resp	Lower	Upper
117	100		
119	5.2	78.1	117.1#
121	0.0	24.6	36.8#

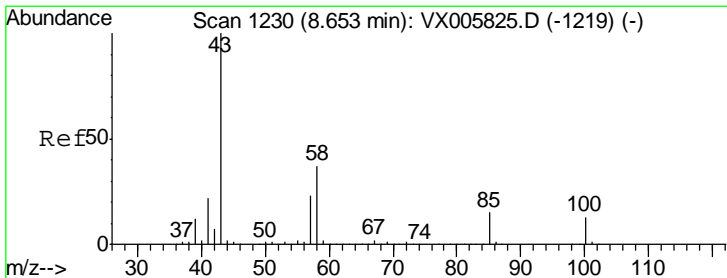
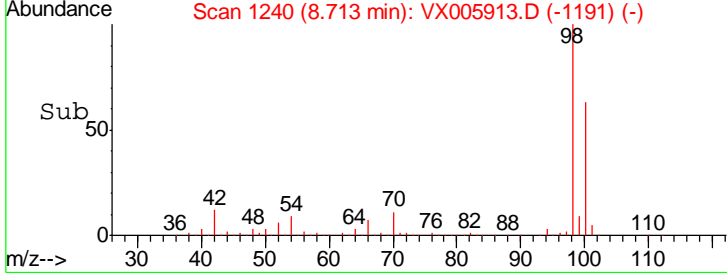
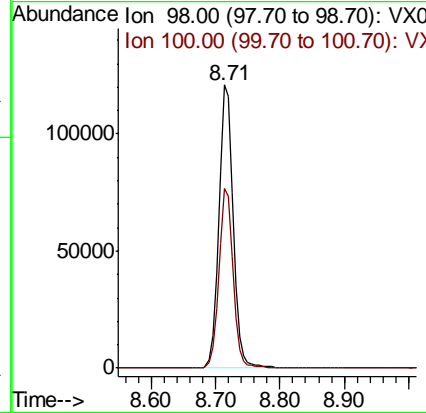
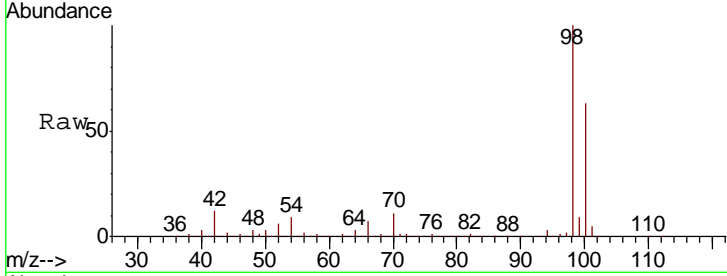




#50
 Toluene-d8
 Concen: 53.379 ug/l
 RT: 8.71 min Scan# 1240
 Delta R.T. -0.00 min
 Lab File: VX005913.D
 Acq: 12 Nov 2018 20:54

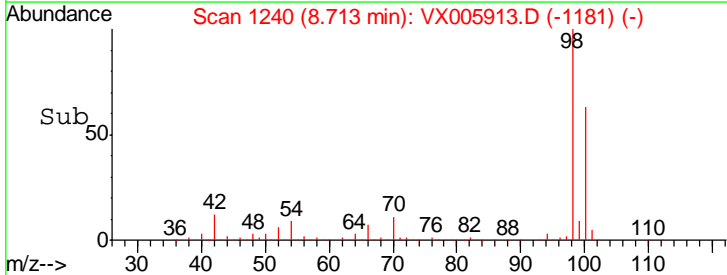
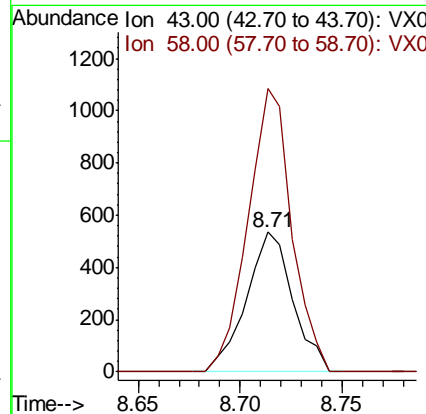
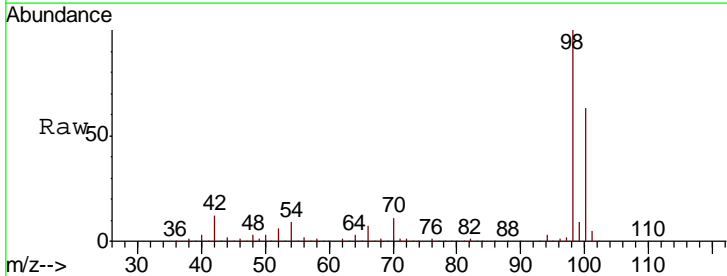
Instrument : MSVOA_X
 ClientSampled : SS003EW296-181109

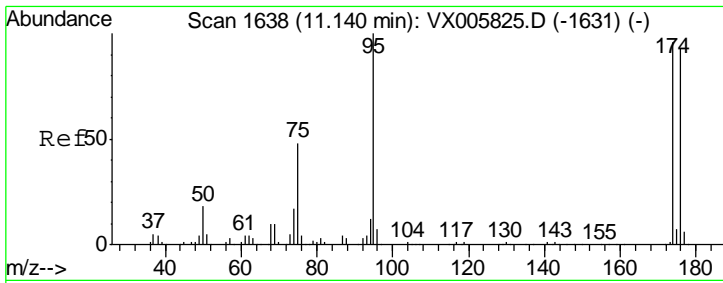
Tgt Ion: 98 Resp: 190403
 Ion Ratio Lower Upper
 98 100
 100 62.9 51.3 76.9



#51
 4-Methyl-2-Pentanone
 Concen: 0.464 ug/l
 RT: 8.71 min Scan# 1240
 Delta R.T. 0.06 min
 Lab File: VX005913.D
 Acq: 12 Nov 2018 20:54

Tgt Ion: 43 Resp: 848
 Ion Ratio Lower Upper
 43 100
 58 190.6 29.7 44.5#



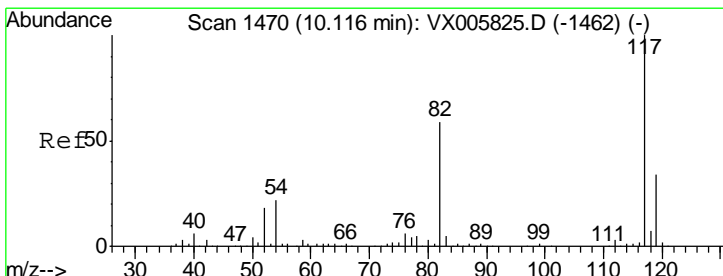
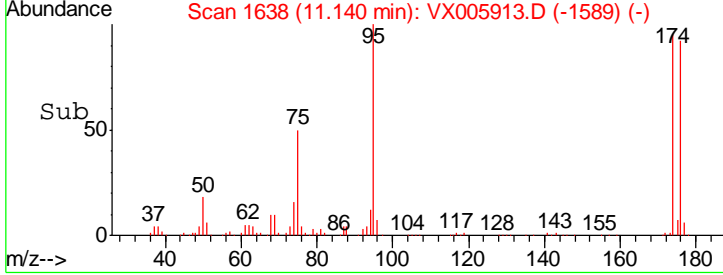
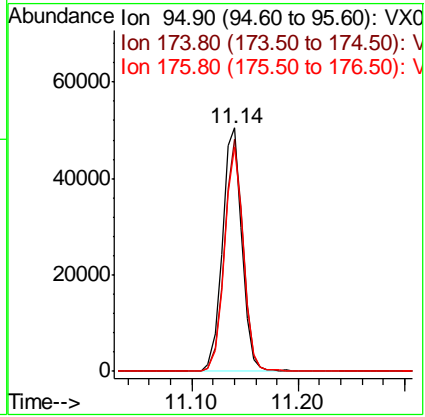
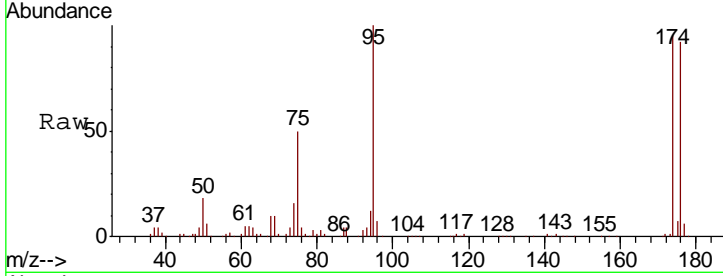


#62
 4-Bromofluorobenzene
 Concen: 50.471 ug/l
 RT: 11.14 min Scan# 1638
 Delta R.T. -0.00 min
 Lab File: VX005913.D
 Acq: 12 Nov 2018 20:54

Instrument : MSVOA_X
 ClientSampled : SS003EW296-181109

Tot Ion: 95 Resp: 64727

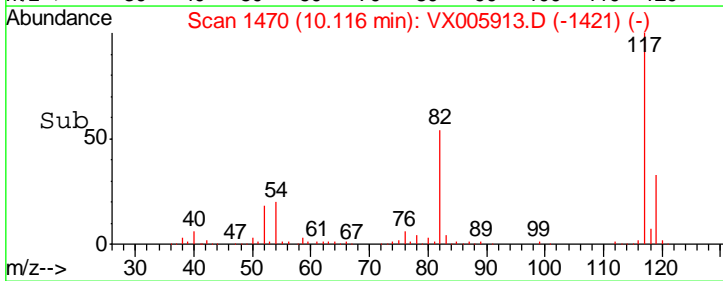
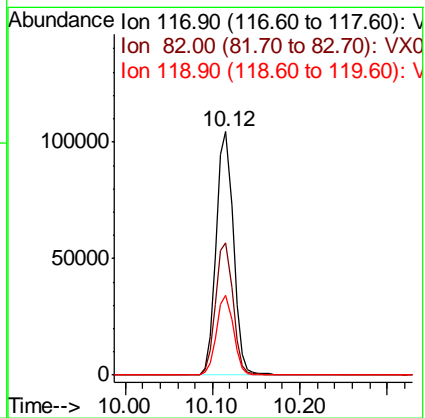
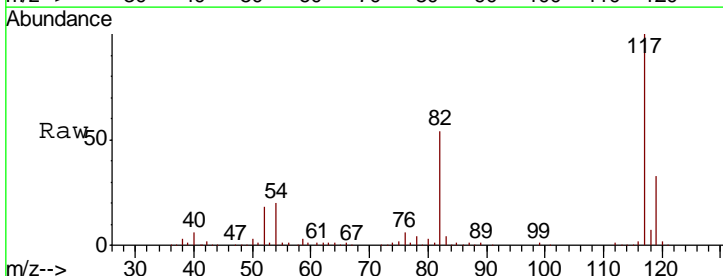
Ion	Ratio	Lower	Upper
95	100		
174	92.1	0.0	184.4
176	89.6	0.0	177.4

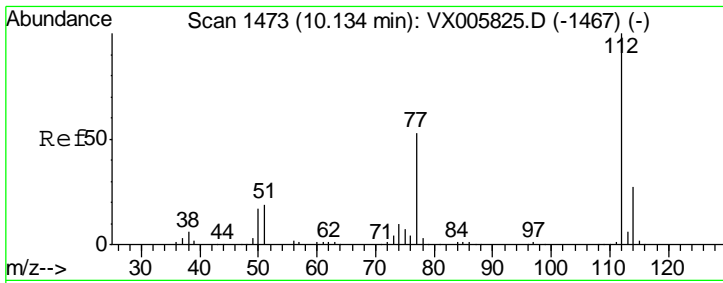


#63
 Chlorobenzene-d5
 Concen: 50.000 ug/l
 RT: 10.12 min Scan# 1470
 Delta R.T. -0.00 min
 Lab File: VX005913.D
 Acq: 12 Nov 2018 20:54

Tgt Ion: 117 Resp: 142483

Ion	Ratio	Lower	Upper
117	100		
82	54.4	44.1	66.1
119	32.9	26.2	39.2

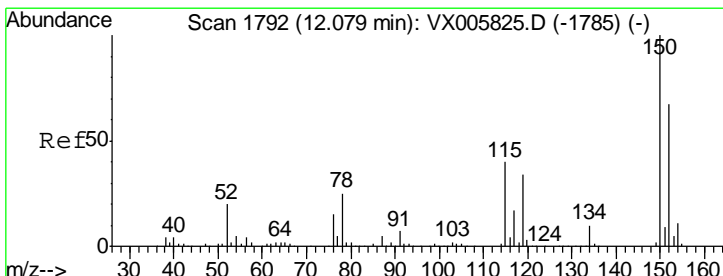
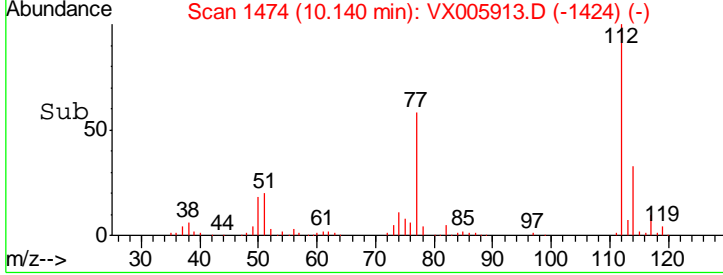
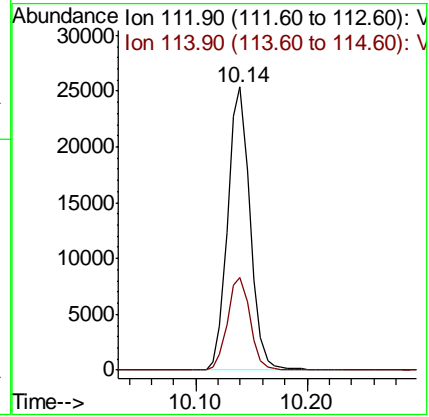
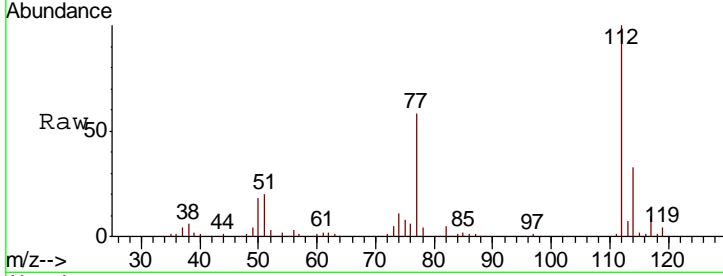




#65
 Chlorobenzene
 Concen: 12.359 ug/l
 RT: 10.14 min Scan# 1474
 Delta R.T. 0.01 min
 Lab File: VX005913.D
 Acq: 12 Nov 2018 20:54

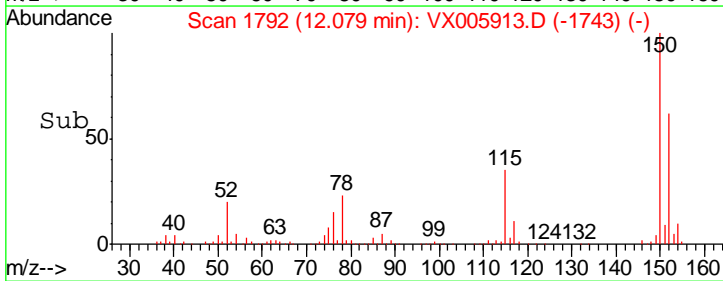
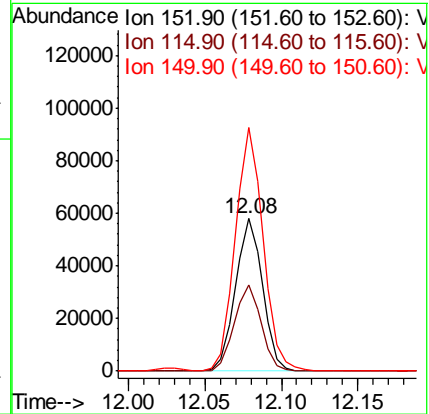
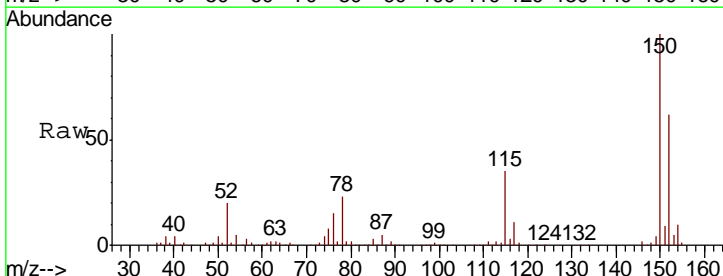
Instrument : MSVOA_X
 ClientSampleId : SS003EW296-181109

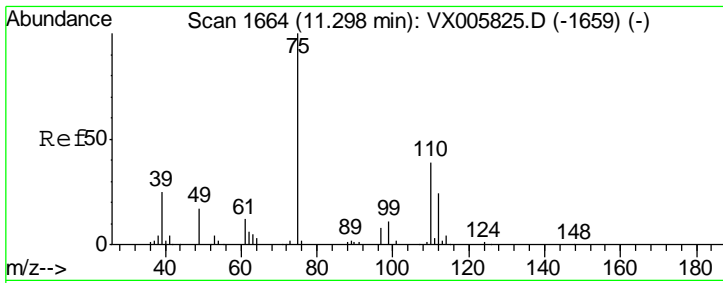
Tgt Ion	Resp	Lower	Upper
112	35278		
114	32.8	25.8	38.6



#72
 1,4-Dichlorobenzene-d4
 Concen: 50.000 ug/l
 RT: 12.08 min Scan# 1792
 Delta R.T. -0.00 min
 Lab File: VX005913.D
 Acq: 12 Nov 2018 20:54

Tgt Ion	Resp	Lower	Upper
152	70830		
115	56.3	39.4	118.1
150	164.4	0.0	346.4

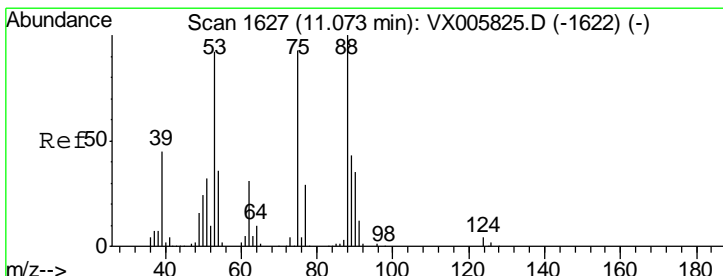
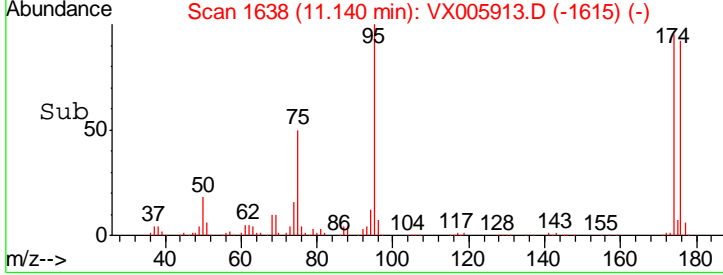
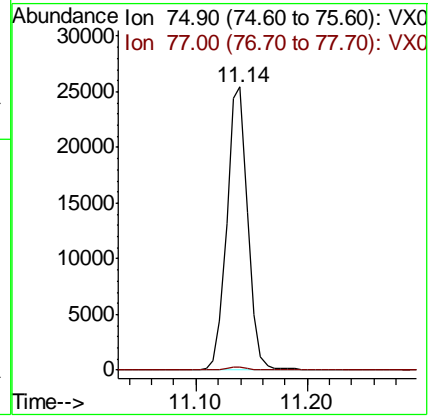
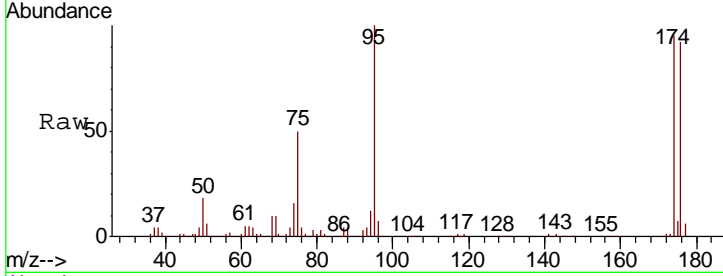




#76
 1,2,3-Trichloropropane
 Concen: 22.793 ug/l
 RT: 11.14 min Scan# 1638
 Delta R.T. -0.16 min
 Lab File: VX005913.D
 Acq: 12 Nov 2018 20:54

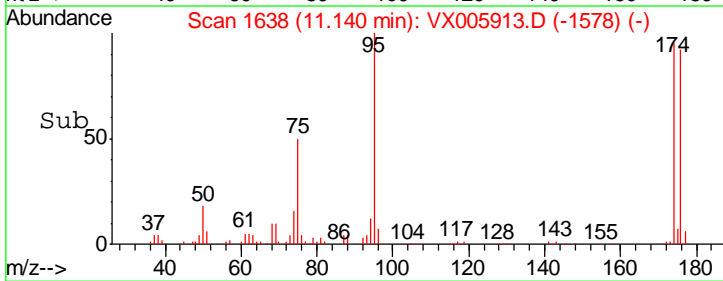
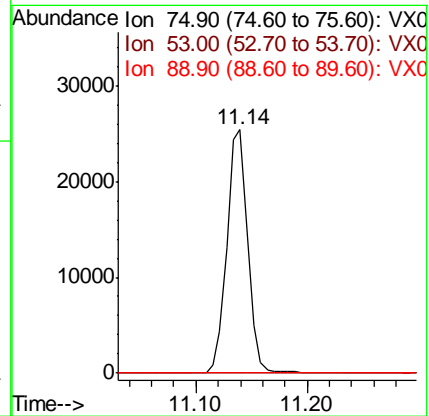
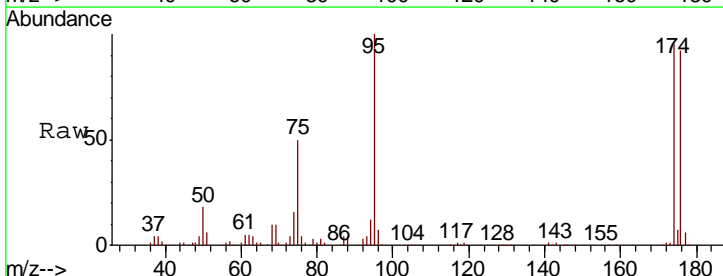
Instrument : MSVOA_X
 ClientSampleId : SS003EW296-181109

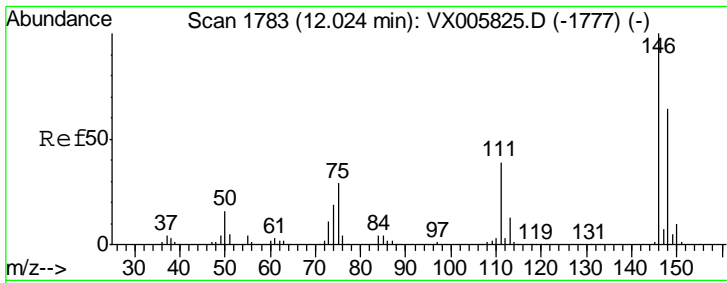
Tgt Ion: 75 Resp: 32873
 Ion Ratio Lower Upper
 75 100
 77 1.2 20.5 61.6#



#81
 trans-1,4-Dichloro-2-butene
 Concen: 72.644 ug/l
 RT: 11.14 min Scan# 1638
 Delta R.T. 0.07 min
 Lab File: VX005913.D
 Acq: 12 Nov 2018 20:54

Tgt Ion: 75 Resp: 32873
 Ion Ratio Lower Upper
 75 100
 53 0.0 80.2 120.2#
 89 0.0 39.8 59.8#

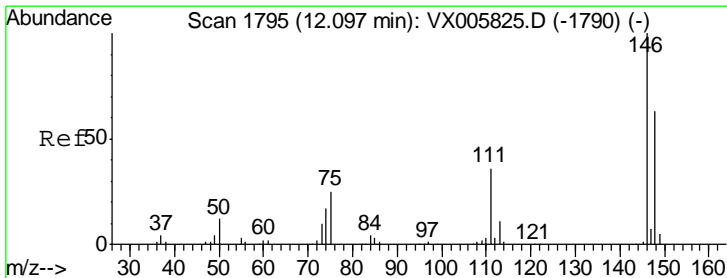
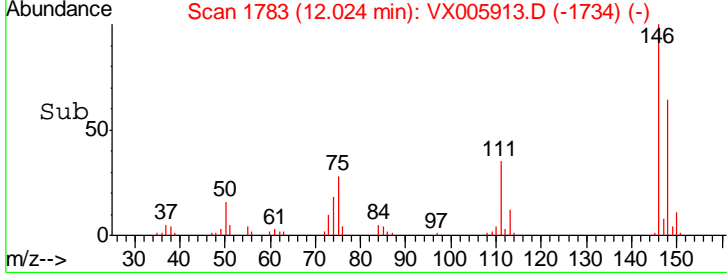
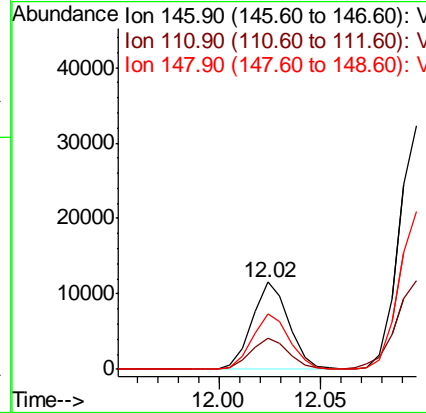
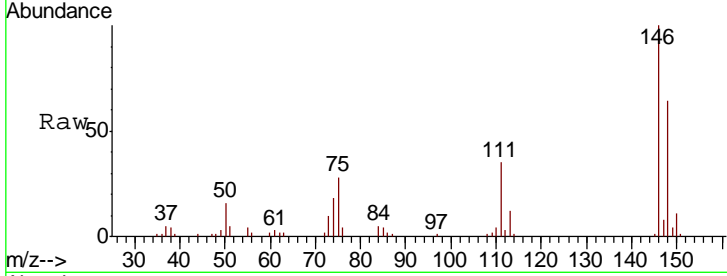




#87
 1,3-Dichlorobenzene
 Concen: 6.515 ug/l
 RT: 12.02 min Scan# 1783
 Delta R.T. -0.00 min
 Lab File: VX005913.D
 Acq: 12 Nov 2018 20:54

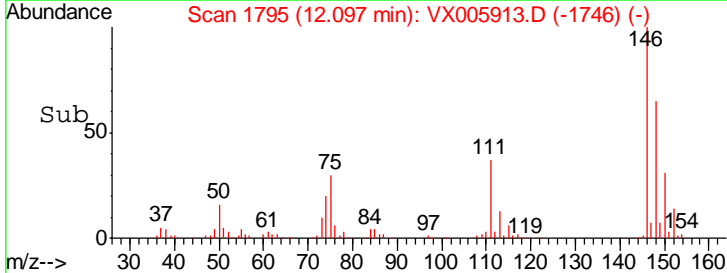
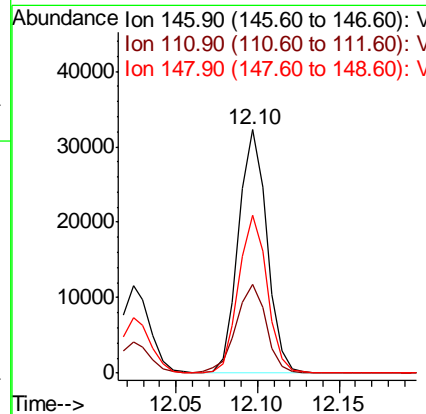
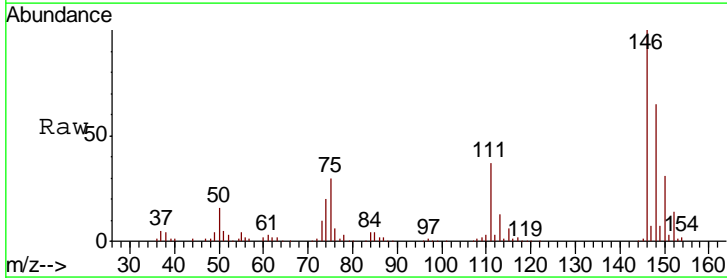
Instrument : MSVOA_X
 ClientSampleId : SS003EW296-181109

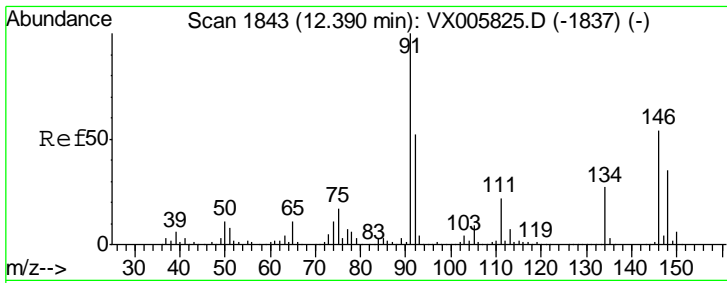
Tgt Ion	Resp	Lower	Upper
146	14434		
111	37.1	19.0	57.0
148	63.8	31.9	95.9



#88
 1,4-Dichlorobenzene
 Concen: 17.324 ug/l
 RT: 12.10 min Scan# 1795
 Delta R.T. -0.00 min
 Lab File: VX005913.D
 Acq: 12 Nov 2018 20:54

Tgt Ion	Resp	Lower	Upper
146	39294		
111	38.6	18.6	55.8
148	65.1	32.1	96.3

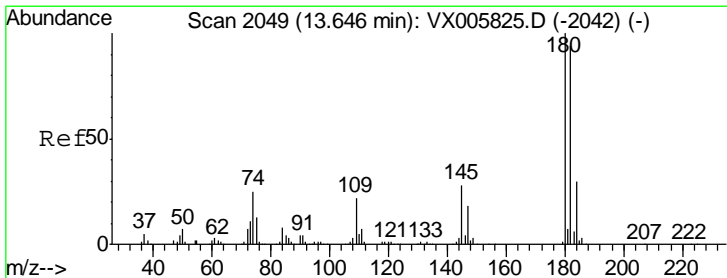
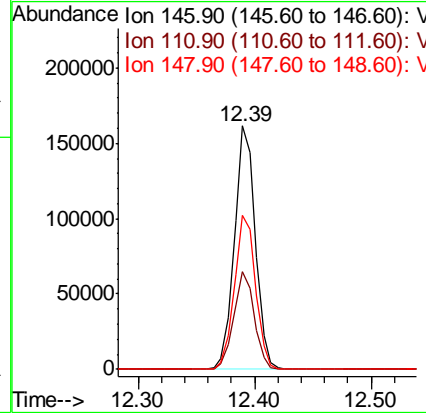
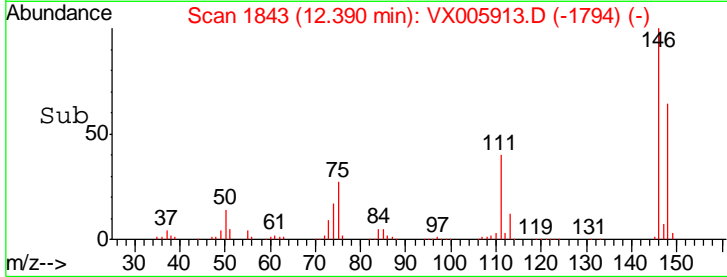
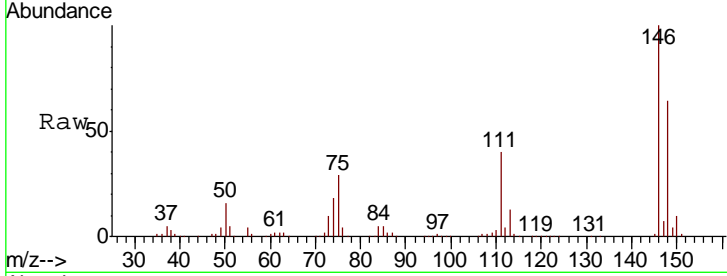




#91
 1,2-Dichlorobenzene
 Concen: 90.640 ug/l
 RT: 12.39 min Scan# 1843
 Delta R.T. -0.00 min
 Lab File: VX005913.D
 Acq: 12 Nov 2018 20:54

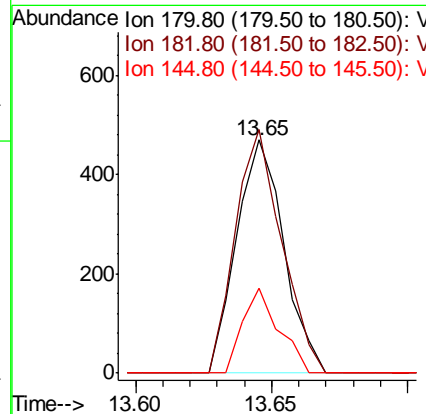
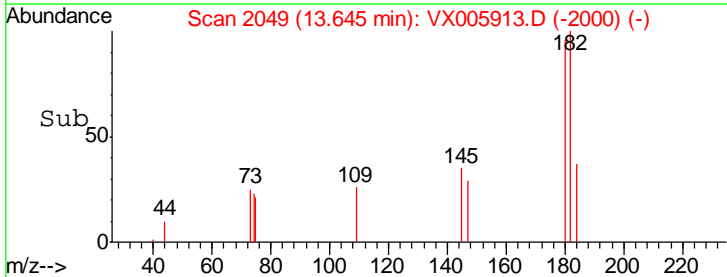
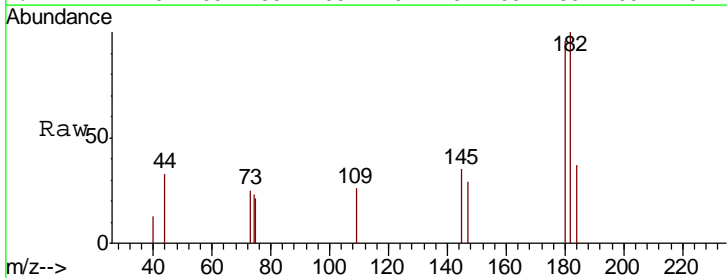
Instrument :
 MSVOA_X
 ClientSampled :
 SS003EW296-181109

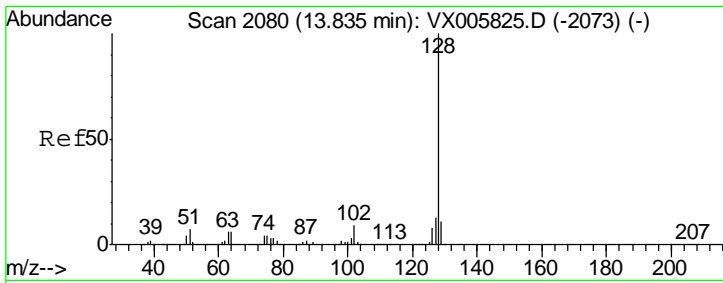
Tgt Ion	Resp	Lower	Upper
146	201185		
111	39.4	20.0	59.9
148	64.3	32.2	96.6



#93
 1,2,4-Trichlorobenzene
 Concen: 0.360 ug/l
 RT: 13.65 min Scan# 2049
 Delta R.T. -0.00 min
 Lab File: VX005913.D
 Acq: 12 Nov 2018 20:54

Tgt Ion	Resp	Lower	Upper
180	563		
182	102.7	47.6	142.8
145	27.9	14.1	42.2





#95
 Naphthalene
 Concen: 1.213 ug/l
 RT: 13.83 min Scan# 2080
 Delta R.T. 0.00 min
 Lab File: VX005913.D
 Acq: 12 Nov 2018 20:54

Instrument :
 MSVOA_X
ClientSampled :
 SS003EW296-181109

Tot Ion	Ratio	Lower	Upper
128	100		
127	0.0	10.4	15.6#
129	0.0	8.7	13.1#

