

Data Path : Z:\VOASRV\HPCHEM1\MSVOA X\DATA\VX111219\
 Data File : VX013389.D
 Acq On : 12 Nov 2019 16:51
 Operator : JC/SP
 Sample : K5803-04
 Misc : 5.0mL/MSVOA X/WATER
 ALS Vial : 17 Sample Multiplier: 1

Instrument :
 MSVOA_X
 ClientSampleId :
 KY038PS038-191111

Quant Time: Nov 13 02:42:23 2019
 Quant Method : Z:\VOASRV\HPCHEM1\MSVOA_X\METHOD\82X103119W.M
 Quant Title : SW846 8260
 QLast Update : Sat Nov 02 07:06:38 2019
 Response via : Initial Calibration

Internal Standards	R.T.	QIon	Response	Conc	Units	Dev(Min)
1) Pentafluorobenzene	5.65	168	781601	50.00	ug/l	0.00
34) 1,4-Difluorobenzene	6.85	114	1233329	50.00	ug/l	0.00
63) Chlorobenzene-d5	10.11	117	1084530	50.00	ug/l	0.00
72) 1,4-Dichlorobenzene-d4	12.07	152	495576	50.00	ug/l	0.00

System Monitoring Compounds

33) 1,2-Dichloroethane-d4	6.05	65	447921	48.37	ug/l	0.00
Spiked Amount	50.000		Recovery	=	96.74%	
35) Dibromofluoromethane	5.48	113	369342	47.75	ug/l	0.00
Spiked Amount	50.000		Recovery	=	95.50%	
50) Toluene-d8	8.71	98	1458776	50.02	ug/l	0.00
Spiked Amount	50.000		Recovery	=	100.04%	
62) 4-Bromofluorobenzene	11.14	95	490782	46.63	ug/l	0.00
Spiked Amount	50.000		Recovery	=	93.26%	

Target Compounds

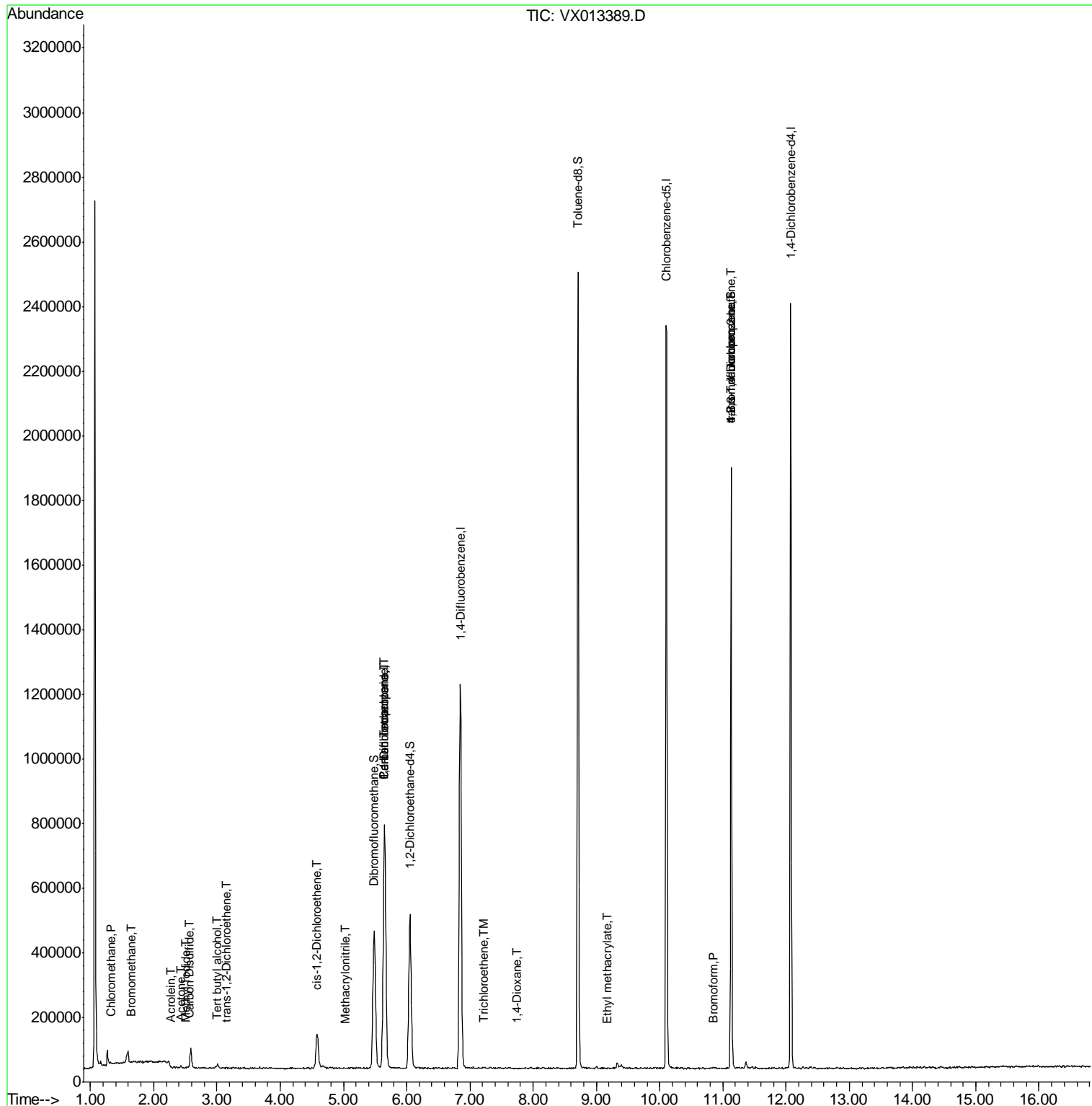
					Qvalue	
3) Chloromethane	1.32	50	4550	0.466	ug/l #	74
5) Bromomethane	1.65	94	1615	0.208	ug/l	81
6) Chloroethane	1.75	64	496	Below Cal	#	56
10) Methyl Iodide	2.50	142	1820	0.201	ug/l #	86
11) Tert butyl alcohol	3.00	59	10344	4.238	ug/l #	93
13) Acrolein	2.28	56	595	0.450	ug/l #	45
16) Acetone	2.43	43	9820	2.126	ug/l #	87
17) Carbon Disulfide	2.56	76	3840	0.200	ug/l	99
21) trans-1,2-Dichloroethene	3.15	96	1713	0.219	ug/l #	55
27) cis-1,2-Dichloroethene	4.58	96	72231	8.260	ug/l	87
36) 1,1-Dichloropropene	5.65	75	52857	4.996	ug/l #	51
38) Carbon Tetrachloride	5.65	117	67959	6.568	ug/l #	15
41) Methacrylonitrile	5.03	41	1503	0.205	ug/l #	53
44) Trichloroethene	7.22	130	3388	0.373	ug/l	74
49) 1,4-Dioxane	7.75	88	214	0.920	ug/l #	16
56) Ethyl methacrylate	9.17	69	958	1.627	ug/l #	71
71) Bromoform	10.84	173	176	3.225	ug/l #	28
76) 1,2,3-Trichloropropane	11.13	75	240111	23.854	ug/l #	34
81) trans-1,4-Dichloro-2-buten	11.13	75	240111	61.400	ug/l #	10

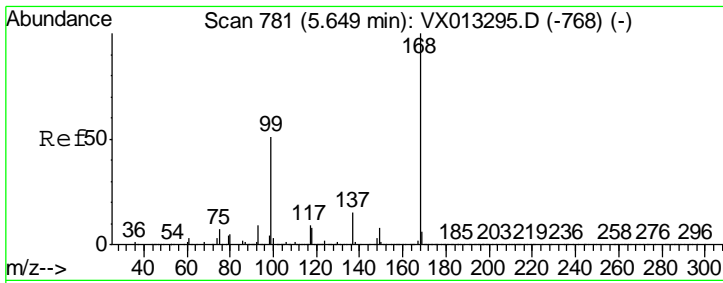
(#) = qualifier out of range (m) = manual integration (+) = signals summed

Data Path : Z:\VOASRV\HPCHEM1\MSVOA X\DATA\VX111219\
 Data File : VX013389.D
 Acq On : 12 Nov 2019 16:51
 Operator : JC/SP
 Sample : K5803-04
 Misc : 5.0mL/MSVOA X/WATER
 ALS Vial : 17 Sample Multiplier: 1

Instrument :
 MSVOA_X
 Client Sampled :
 KY038PS038-191111

Quant Time: Nov 13 02:42:23 2019
 Quant Method : Z:\VOASRV\HPCHEM1\MSVOA_X\METHOD\82X103119W.M
 Quant Title : SW846 8260
 QLast Update : Sat Nov 02 07:06:38 2019
 Response via : Initial Calibration

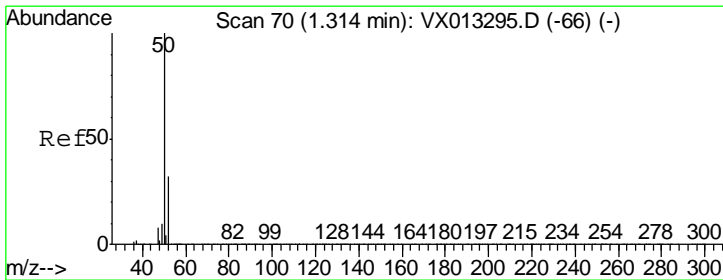
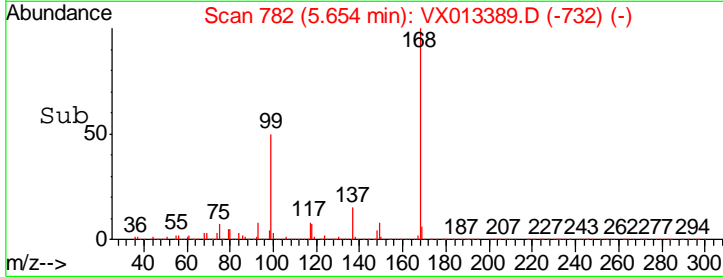
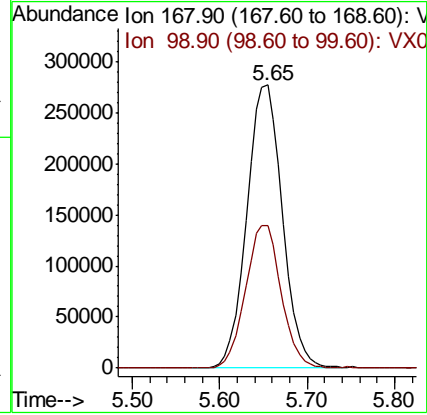
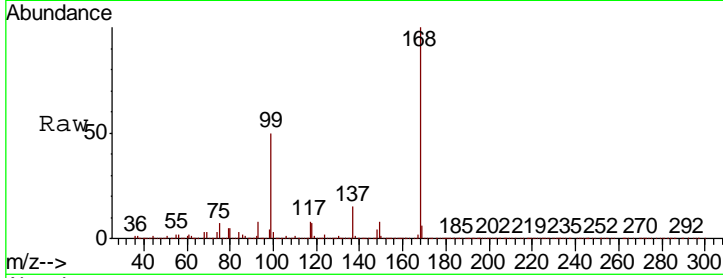




#1
 Pentafluorobenzene
 Concen: 50.000 ug/l
 RT: 5.65 min Scan# 782
 Delta R.T. 0.01 min
 Lab File: VX013389.D
 Acq: 12 Nov 2019 16:51

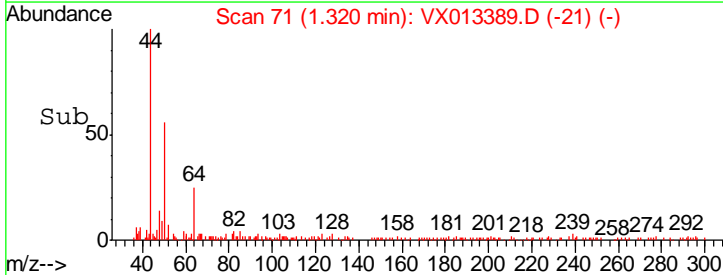
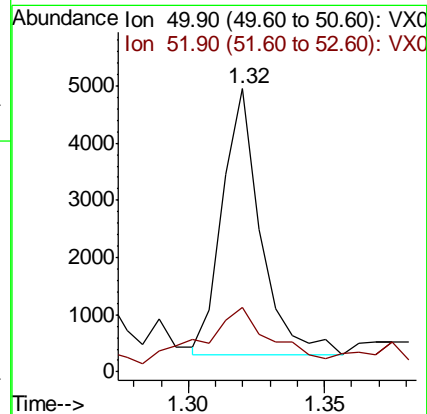
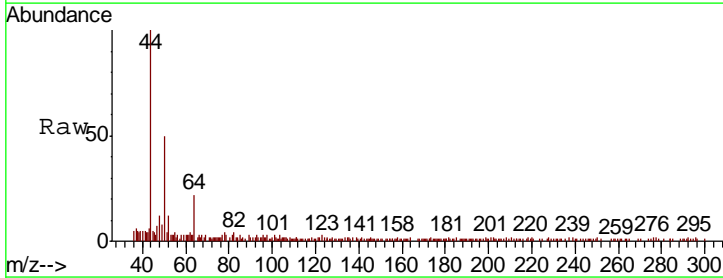
Instrument :
 MSVOA_X
 ClientSampleId :
 KY038PS038-191111

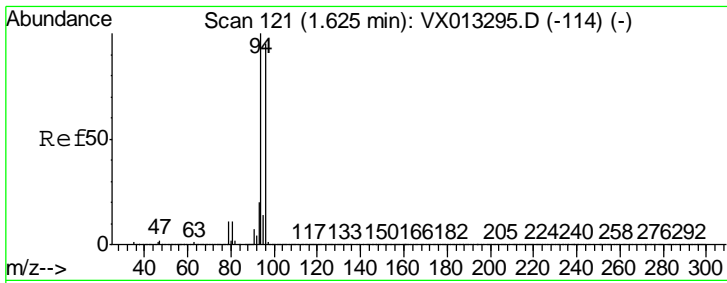
Tgt Ion	Resp	Lower	Upper
168	100		
99	50.1	40.8	61.2



#3
 Chloromethane
 Concen: 0.466 ug/l
 RT: 1.32 min Scan# 71
 Delta R.T. 0.01 min
 Lab File: VX013389.D
 Acq: 12 Nov 2019 16:51

Tgt Ion	Resp	Lower	Upper
50	100		
52	17.5	25.5	38.3#

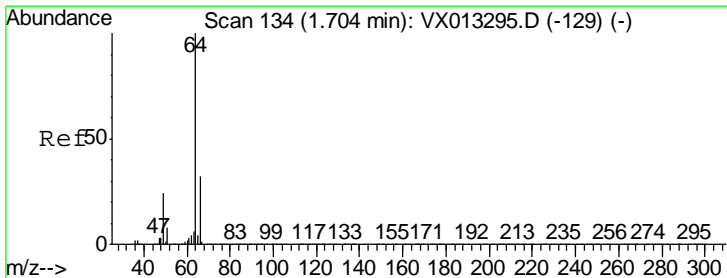
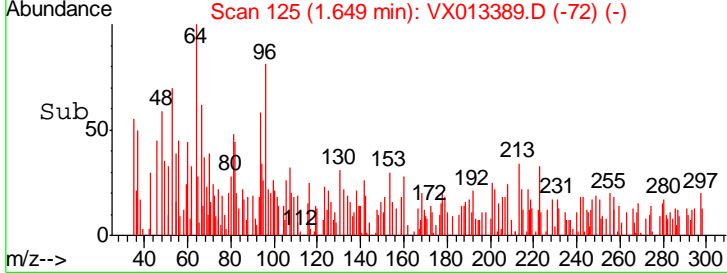
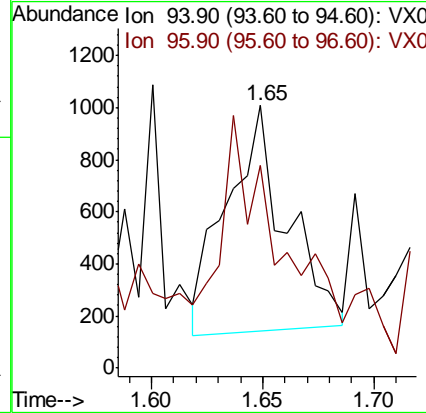
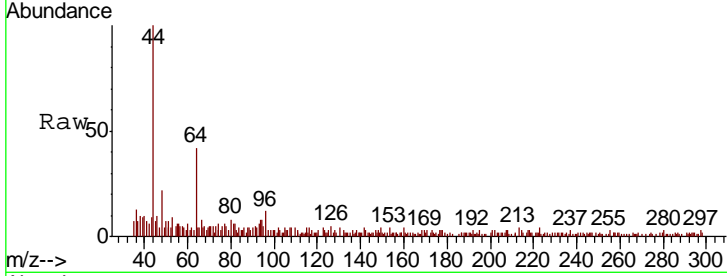




#5
 Bromomethane
 Concen: 0.208 ug/l
 RT: 1.65 min Scan# 125
 Delta R.T. 0.02 min
 Lab File: VX013389.D
 Acq: 12 Nov 2019 16:51

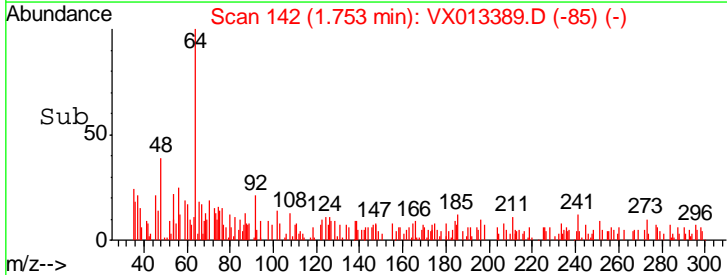
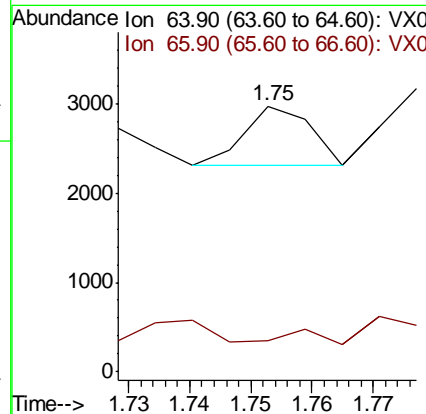
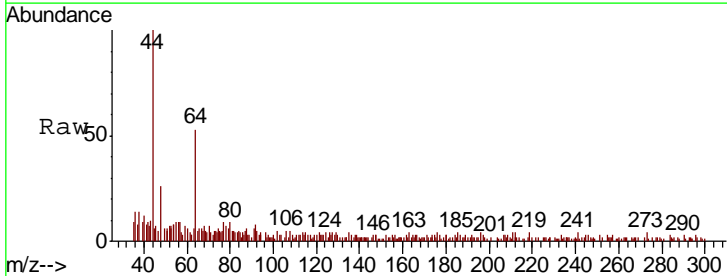
Instrument :
 MSVOA_X
 ClientSampled :
 KY038PS038-191111

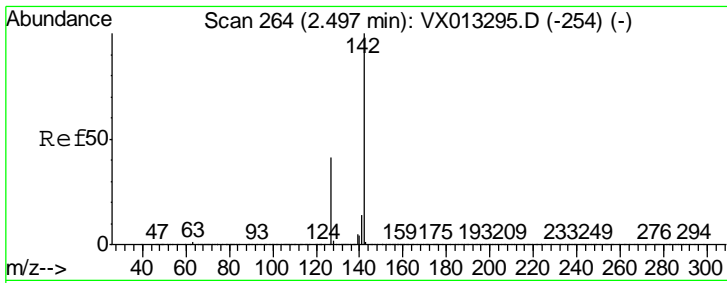
Tgt Ion: 94 Resp: 1615
 Ion Ratio Lower Upper
 94 100
 96 76.4 75.8 113.8



#6
 Chloroethane
 Concen: Below Cal
 RT: 1.75 min Scan# 142
 Delta R.T. 0.05 min
 Lab File: VX013389.D
 Acq: 12 Nov 2019 16:51

Tgt Ion: 64 Resp: 496
 Ion Ratio Lower Upper
 64 100
 66 7.4 25.6 38.4#

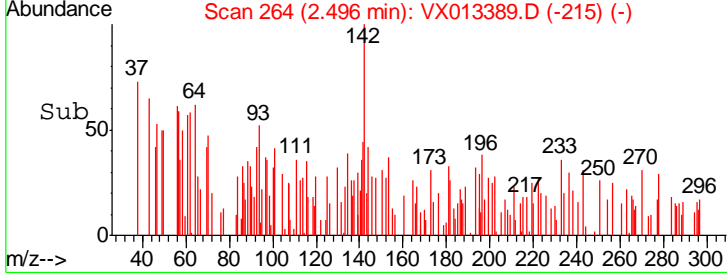
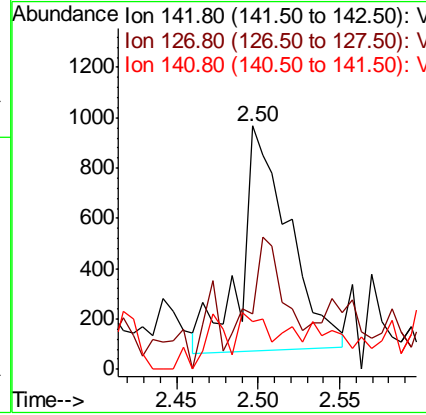
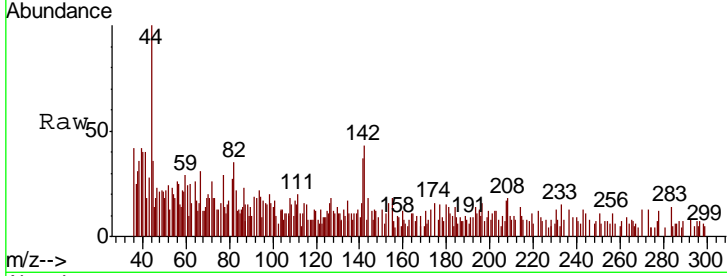




#10
 Methyl Iodide
 Concen: 0.201 ug/l
 RT: 2.50 min Scan# 264
 Delta R.T. -0.00 min
 Lab File: VX013389.D
 Acq: 12 Nov 2019 16:51

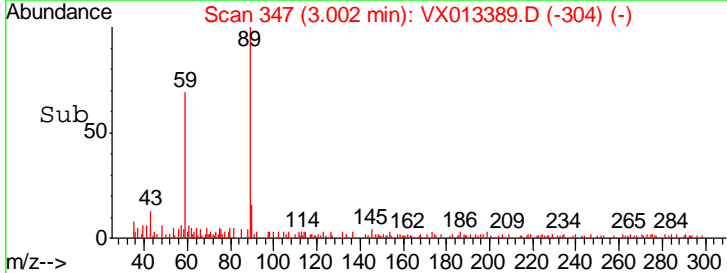
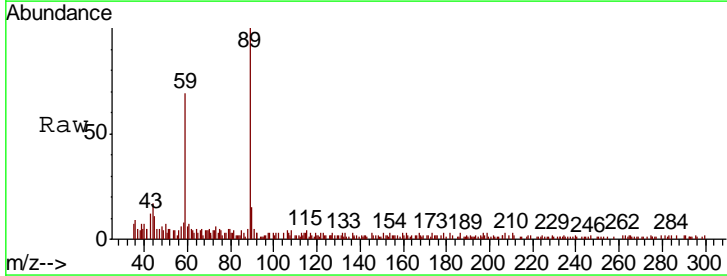
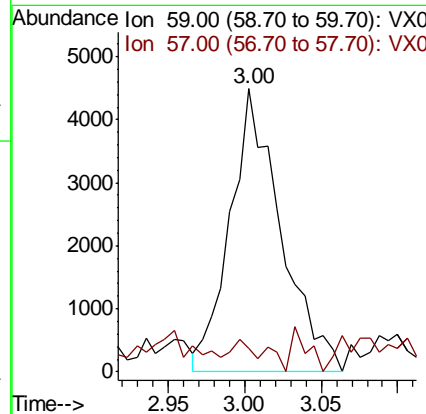
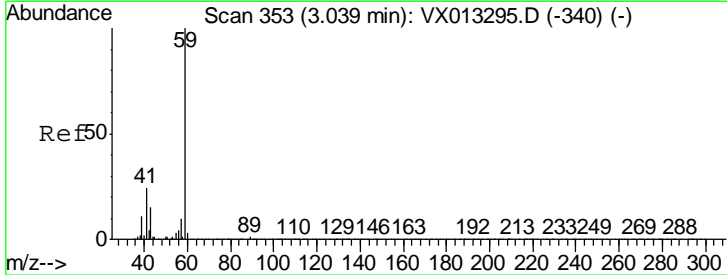
Instrument : MSVOA_X
 ClientSampled : KY038PS038-191111

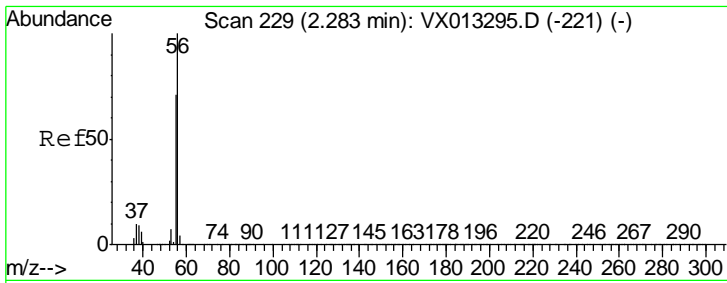
Tgt Ion	Resp	Lower	Upper
142	1820		
127	30.7	32.6	49.0#
141	11.7	11.6	17.4



#11
 Tert butyl alcohol
 Concen: 4.238 ug/l
 RT: 3.00 min Scan# 347
 Delta R.T. -0.04 min
 Lab File: VX013389.D
 Acq: 12 Nov 2019 16:51

Tgt Ion	Resp	Lower	Upper
59	10344		
57	7.5	8.0	12.0#

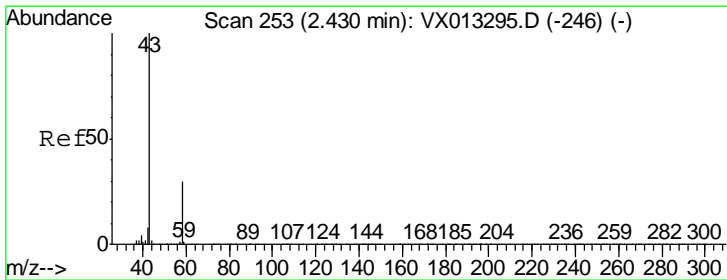
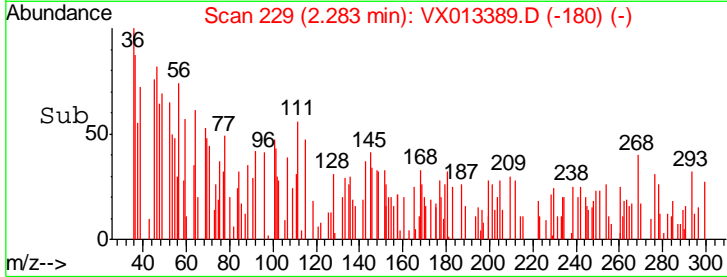
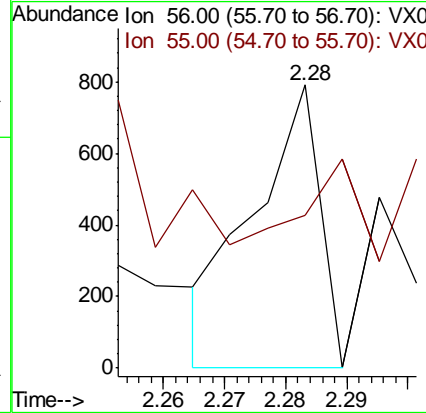
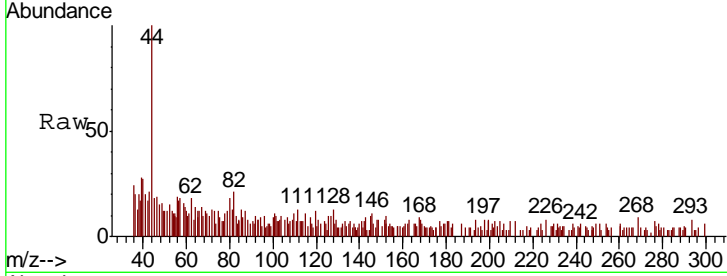




#13
 Acrolein
 Concen: 0.450 ug/l
 RT: 2.28 min Scan# 229
 Delta R.T. -0.00 min
 Lab File: VX013389.D
 Acq: 12 Nov 2019 16:51

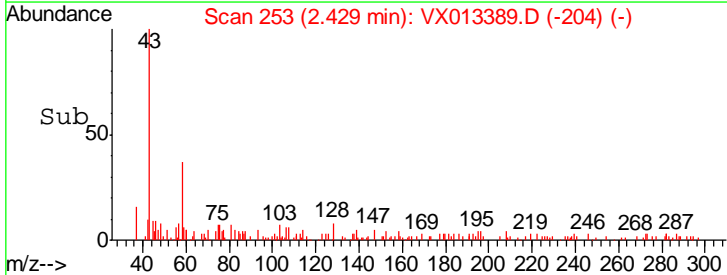
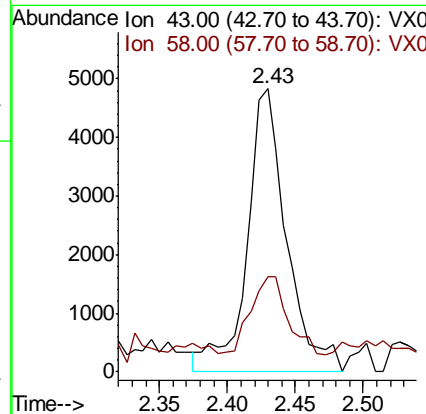
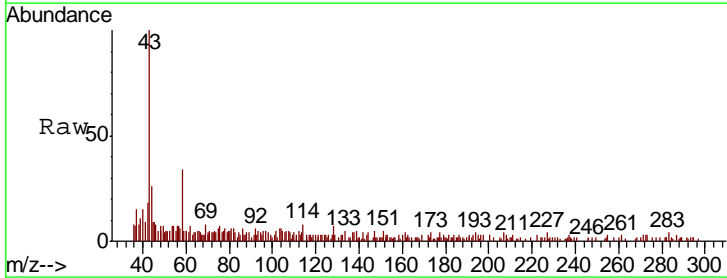
Instrument :
 MSVOA_X
 ClientSampleId :
 KY038PS038-191111

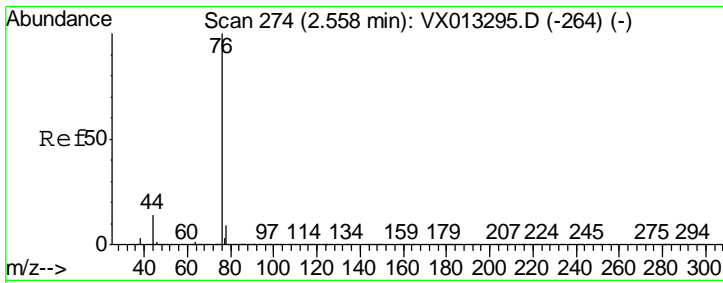
Tgt Ion: 56 Resp: 595
 Ion Ratio Lower Upper
 56 100
 55 25.7 57.4 86.0#



#16
 Acetone
 Concen: 2.126 ug/l
 RT: 2.43 min Scan# 253
 Delta R.T. -0.00 min
 Lab File: VX013389.D
 Acq: 12 Nov 2019 16:51

Tgt Ion: 43 Resp: 9820
 Ion Ratio Lower Upper
 43 100
 58 23.4 24.3 36.5#

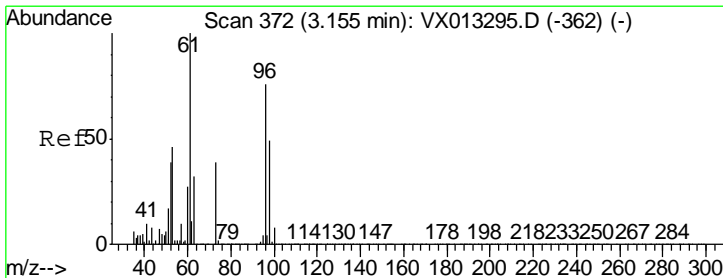
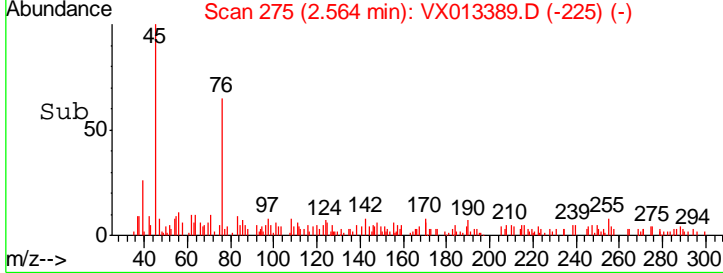
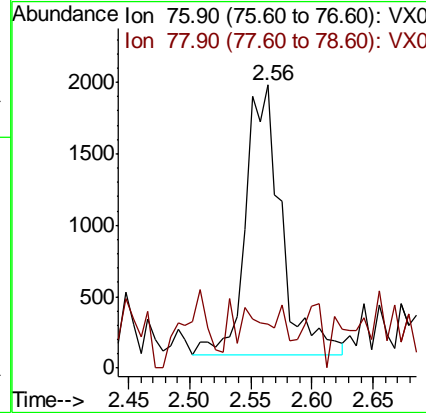
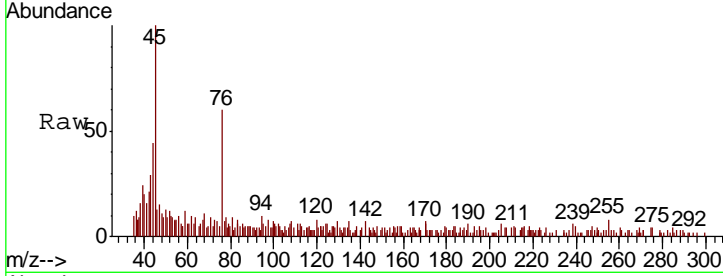




#17
 Carbon Disulfide
 Concen: 0.200 ug/l
 RT: 2.56 min Scan# 275
 Delta R.T. 0.01 min
 Lab File: VX013389.D
 Acq: 12 Nov 2019 16:51

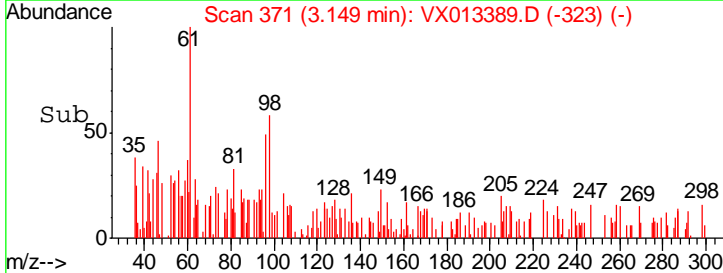
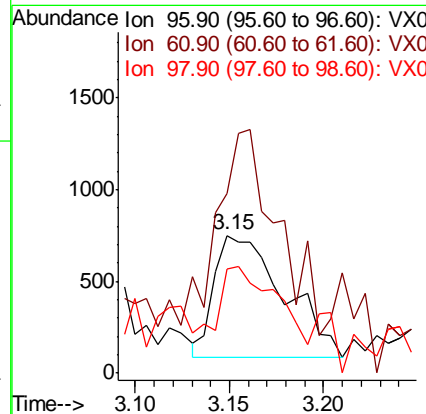
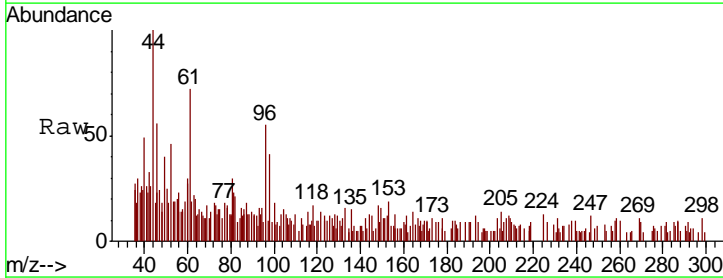
Instrument :
 MSVOA_X
 ClientSampleId :
 KY038PS038-191111

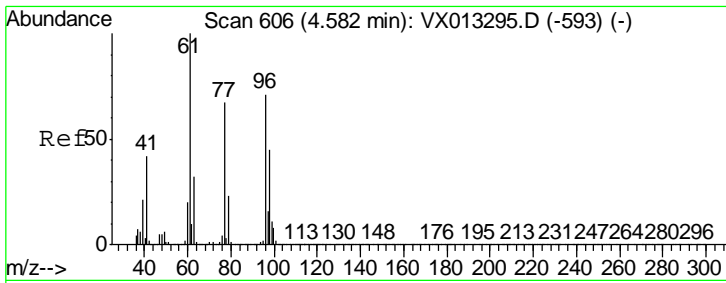
Tgt Ion	Resp	Lower	Upper
76	3840		
76	100		
78	9.1	7.0	10.6



#21
 trans-1,2-Dichloroethene
 Concen: 0.219 ug/l
 RT: 3.15 min Scan# 371
 Delta R.T. -0.01 min
 Lab File: VX013389.D
 Acq: 12 Nov 2019 16:51

Tgt Ion	Resp	Lower	Upper
96	1713		
96	100		
61	68.3	105.8	158.6#
98	84.9	51.8	77.6#

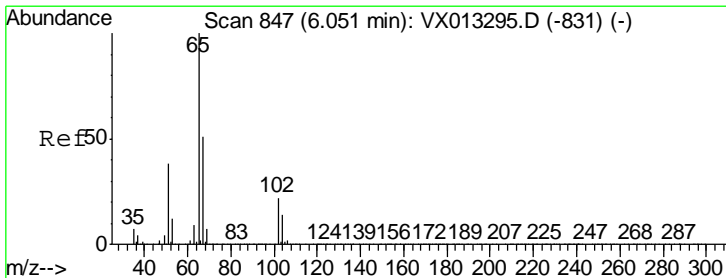
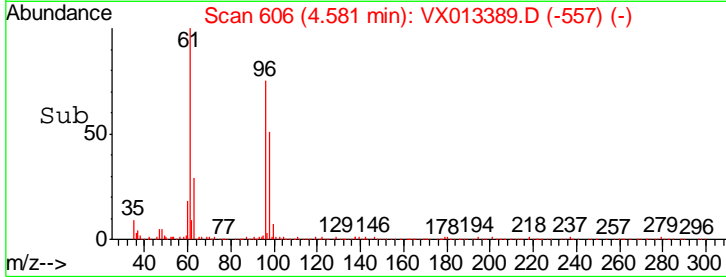
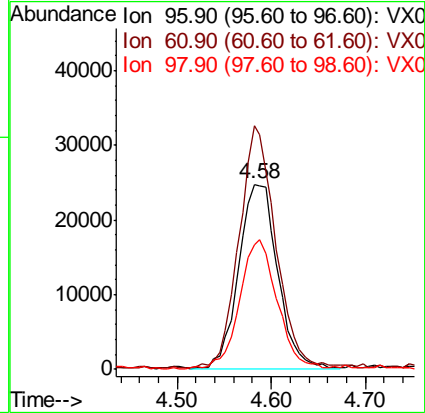
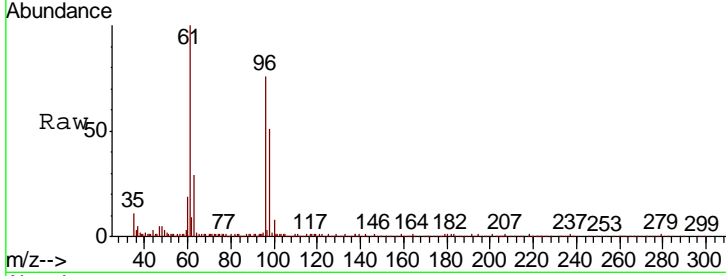




#27
 cis-1,2-Dichloroethene
 Concen: 8.260 ug/l
 RT: 4.58 min Scan# 606
 Delta R.T. -0.00 min
 Lab File: VX013389.D
 Acq: 12 Nov 2019 16:51

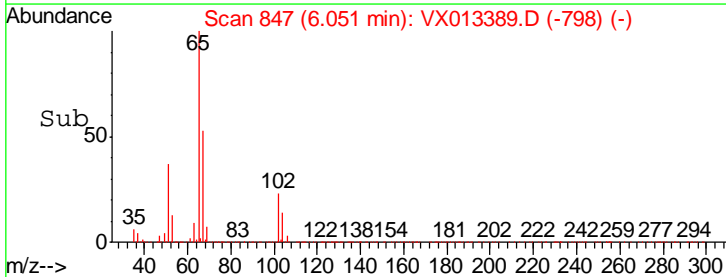
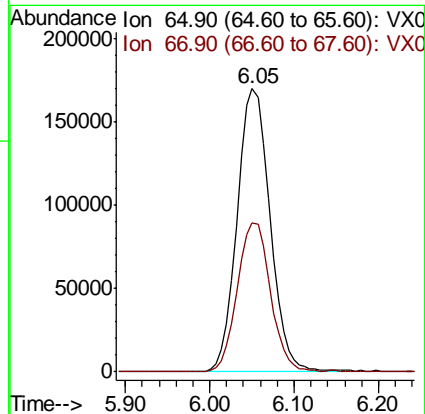
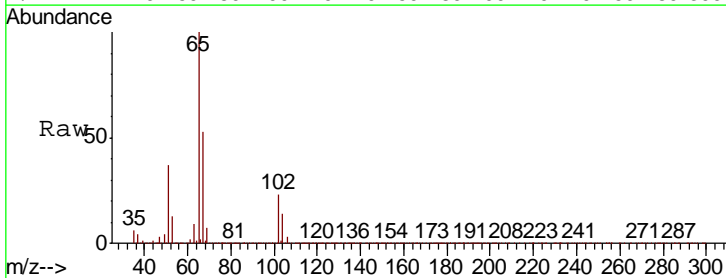
Instrument :
 MSVOA_X
 ClientSampled :
 KY038PS038-191111

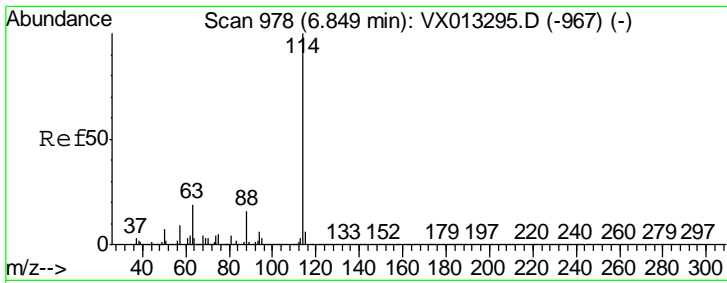
Tgt Ion	Resp	Lower	Upper
96	72231		
61	121.8	0.0	288.0
98	67.6	0.0	129.6



#33
 1,2-Dichloroethane-d4
 Concen: 48.373 ug/l
 RT: 6.05 min Scan# 847
 Delta R.T. -0.00 min
 Lab File: VX013389.D
 Acq: 12 Nov 2019 16:51

Tgt Ion	Resp	Lower	Upper
65	447921		
67	52.6	0.0	104.2

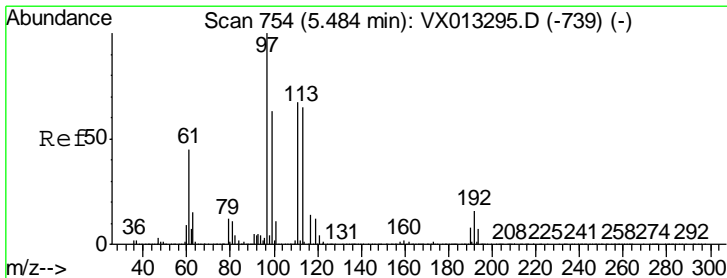
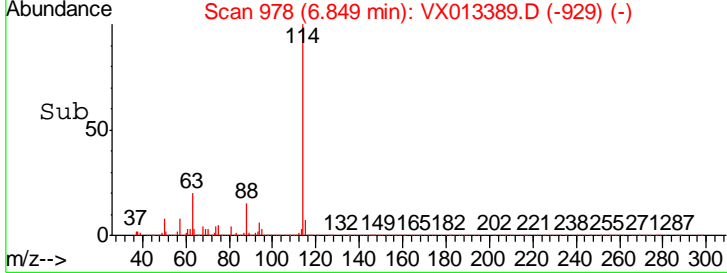
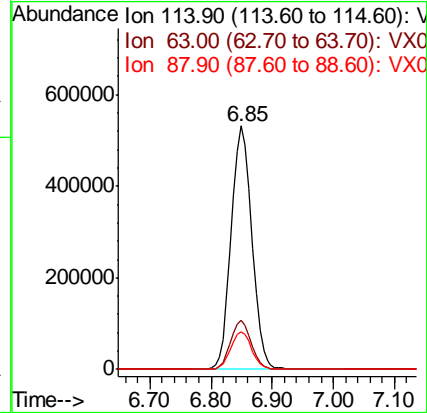
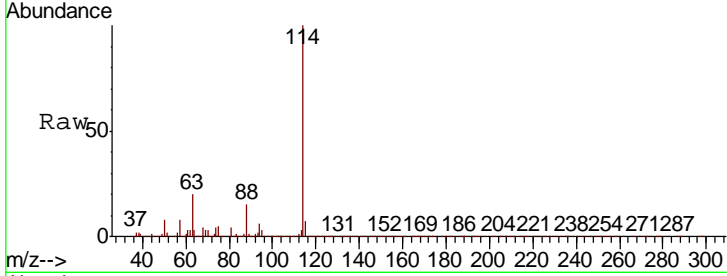




#34
 1,4-Difluorobenzene
 Concen: 50.000 ug/l
 RT: 6.85 min Scan# 978
 Delta R.T. -0.00 min
 Lab File: VX013389.D
 Acq: 12 Nov 2019 16:51

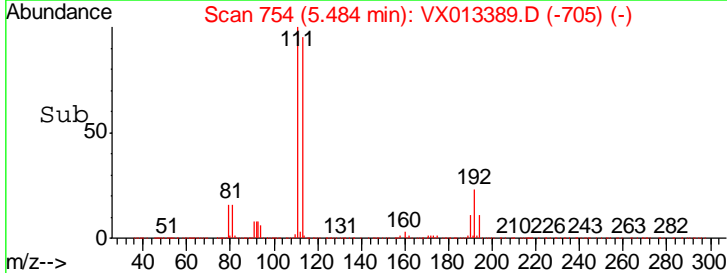
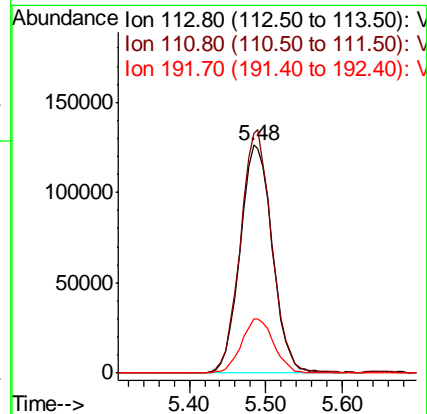
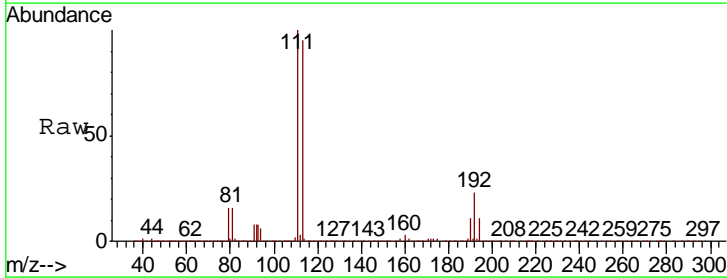
Instrument :
 MSVOA_X
 ClientSampleId :
 KY038PS038-191111

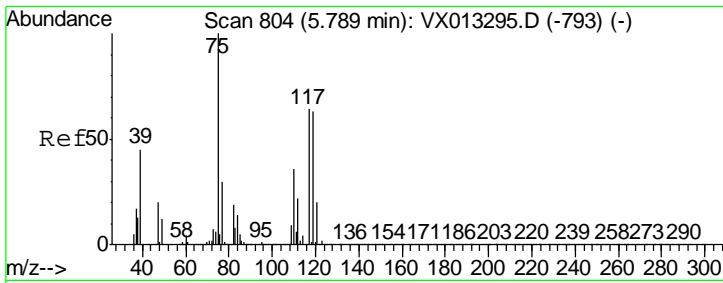
Tgt Ion	Resp	Lower	Upper
114	1233329		
63	20.1	0.0	38.4
88	15.4	0.0	32.2



#35
 Dibromofluoromethane
 Concen: 47.746 ug/l
 RT: 5.48 min Scan# 754
 Delta R.T. -0.00 min
 Lab File: VX013389.D
 Acq: 12 Nov 2019 16:51

Tgt Ion	Resp	Lower	Upper
113	369342		
111	103.8	81.9	122.9
192	23.7	19.1	28.7

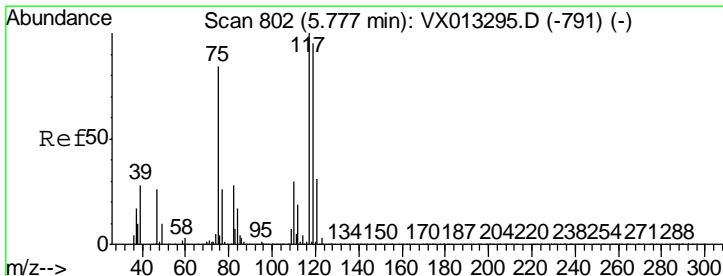
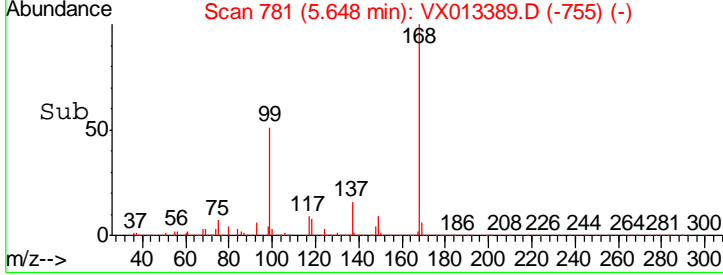
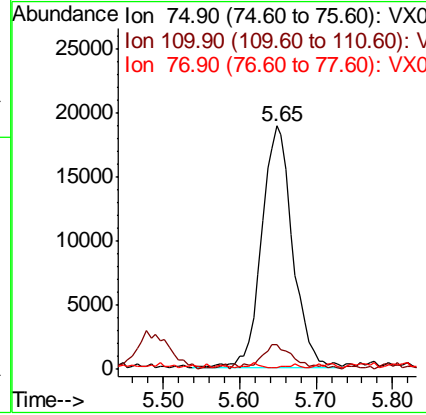
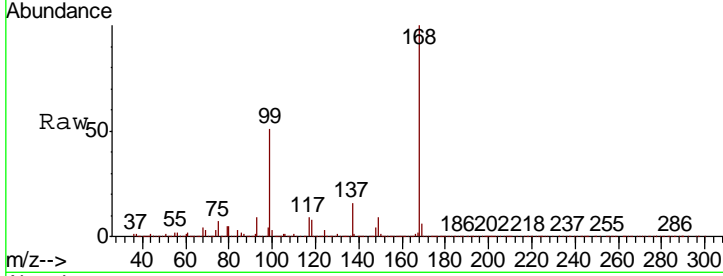




#36
 1,1-Dichloropropene
 Concen: 4.996 ug/l
 RT: 5.65 min Scan# 781
 Delta R.T. -0.14 min
 Lab File: VX013389.D
 Acq: 12 Nov 2019 16:51

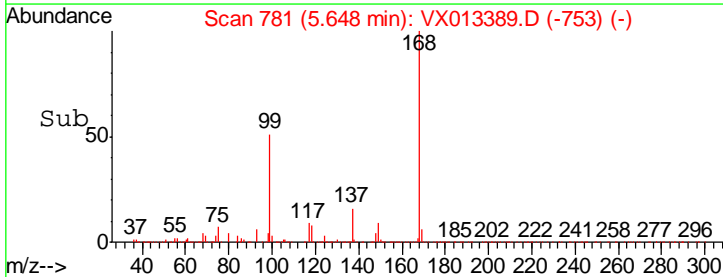
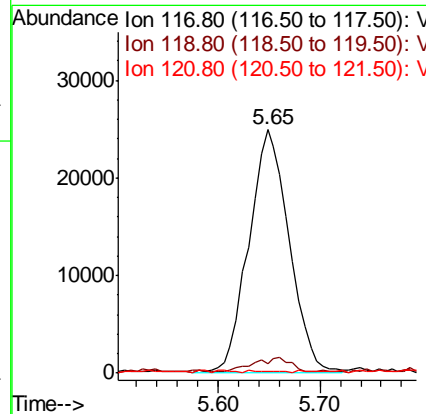
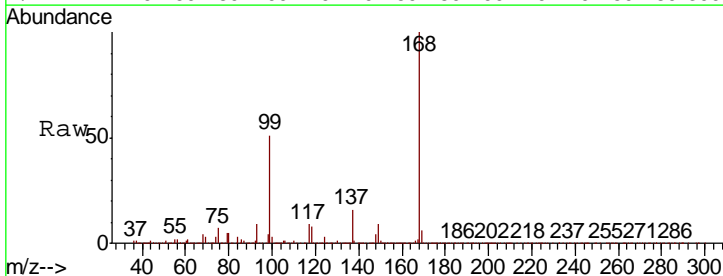
Instrument : MSVOA_X
 ClientSampled : KY038PS038-191111

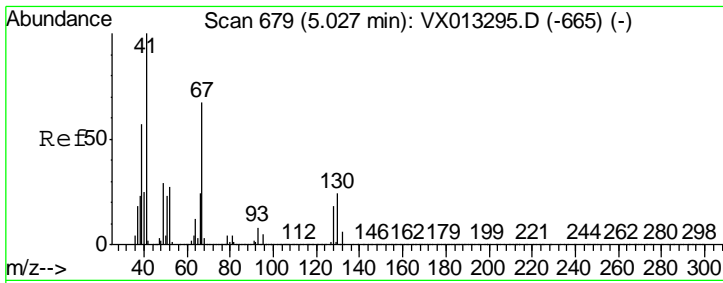
Tgt Ion	Resp	Lower	Upper
75	100		
110	11.4	18.1	54.1#
77	0.0	25.0	37.4#



#38
 Carbon Tetrachloride
 Concen: 6.568 ug/l
 RT: 5.65 min Scan# 781
 Delta R.T. -0.13 min
 Lab File: VX013389.D
 Acq: 12 Nov 2019 16:51

Tgt Ion	Resp	Lower	Upper
117	100		
119	3.1	76.1	114.1#
121	0.9	24.6	37.0#

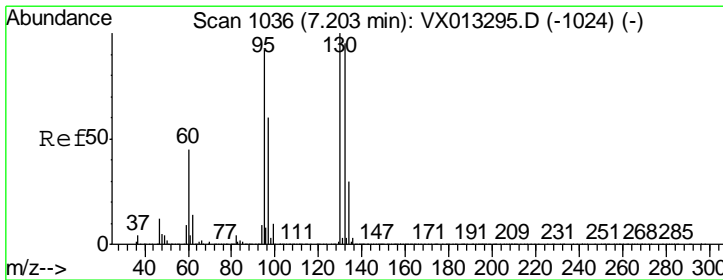
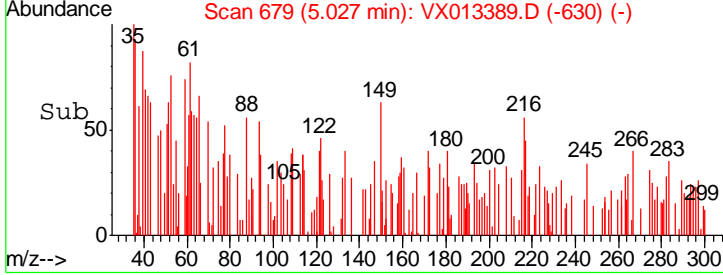
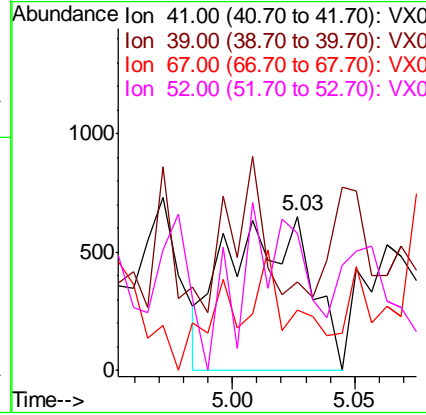
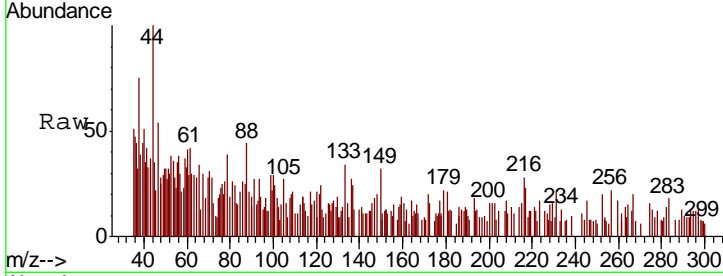




#41
 Methacrylonitrile
 Concen: 0.205 ug/l
 RT: 5.03 min Scan# 679
 Delta R.T. -0.00 min
 Lab File: VX013389.D
 Acq: 12 Nov 2019 16:51

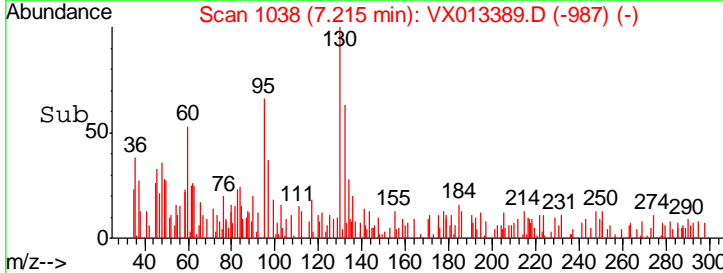
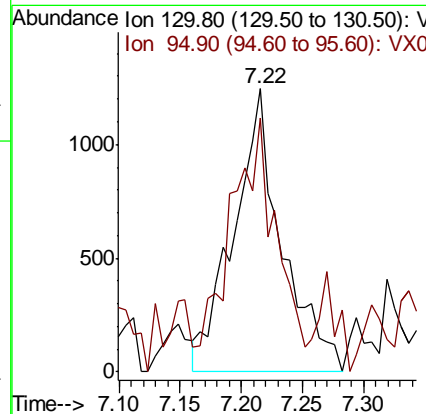
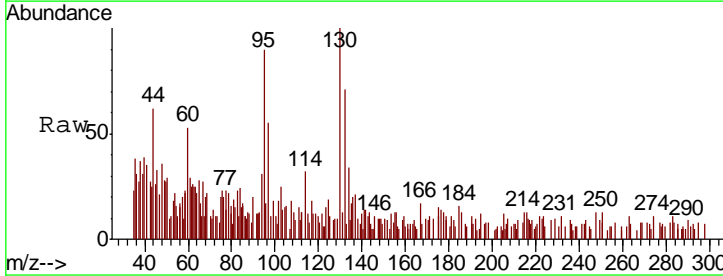
Instrument : MSVOA_X
 ClientSampled : KY038PS038-191111

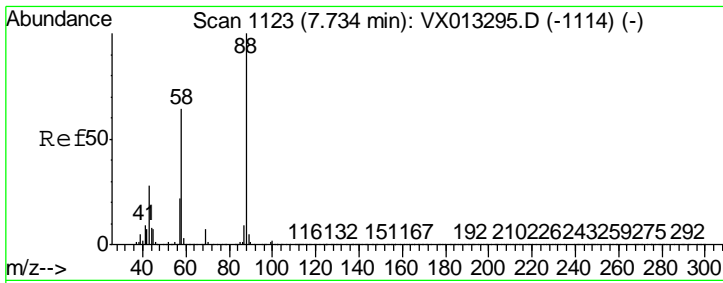
Tgt Ion	Resp	Lower	Upper
41	1503		
39	40.0	45.0	67.6#
67	33.9	55.4	83.2#
52	83.0	23.1	34.7#



#44
 Trichloroethene
 Concen: 0.373 ug/l
 RT: 7.22 min Scan# 1038
 Delta R.T. 0.01 min
 Lab File: VX013389.D
 Acq: 12 Nov 2019 16:51

Tgt Ion	Resp	Lower	Upper
130	3388		
95	67.6	0.0	184.8

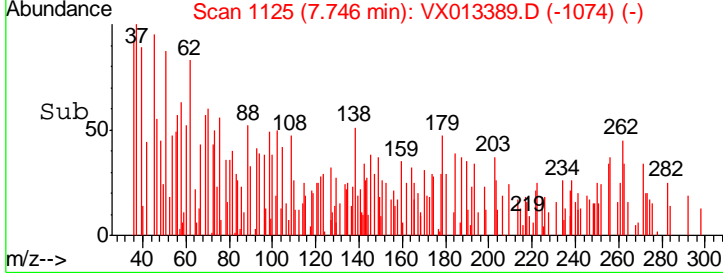
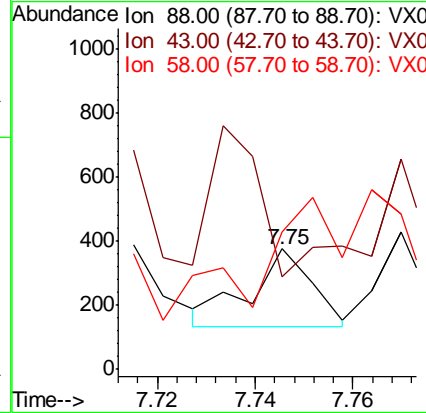
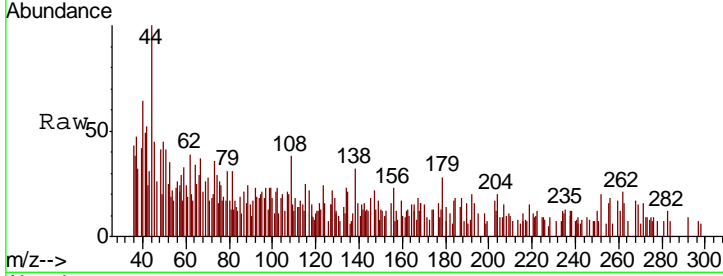




#49
 1,4-Dioxane
 Concen: 0.920 ug/l
 RT: 7.75 min Scan# 1125
 Delta R.T. 0.01 min
 Lab File: VX013389.D
 Acq: 12 Nov 2019 16:51

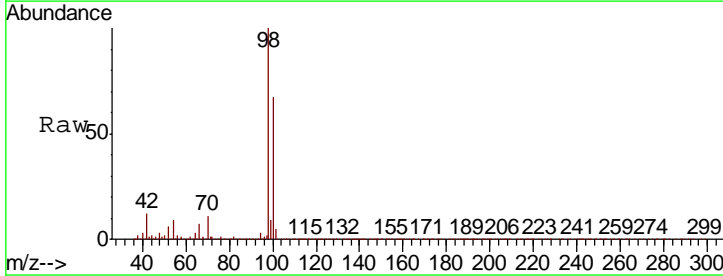
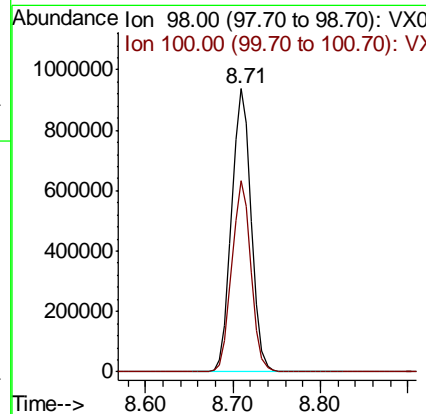
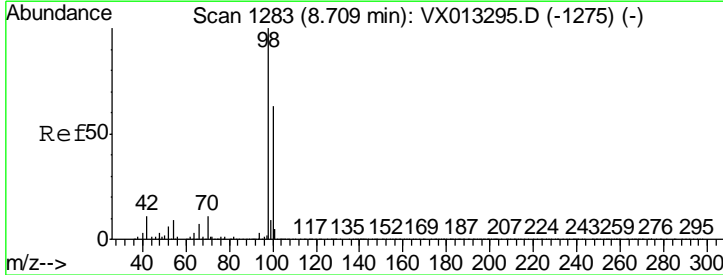
Instrument : MSVOA_X
 ClientSampleId : KY038PS038-191111

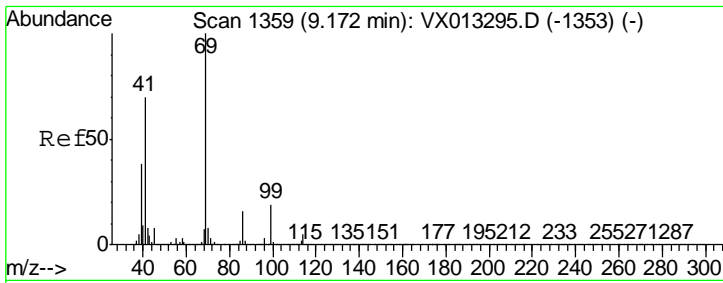
Tgt Ion	Resp	Lower	Upper
88	214		
43	172.0	26.6	39.8#
58	63.1	55.0	82.6



#50
 Toluene-d8
 Concen: 50.023 ug/l
 RT: 8.71 min Scan# 1283
 Delta R.T. -0.00 min
 Lab File: VX013389.D
 Acq: 12 Nov 2019 16:51

Tgt Ion	Resp	Lower	Upper
98	1458776		
100	65.9	52.2	78.2

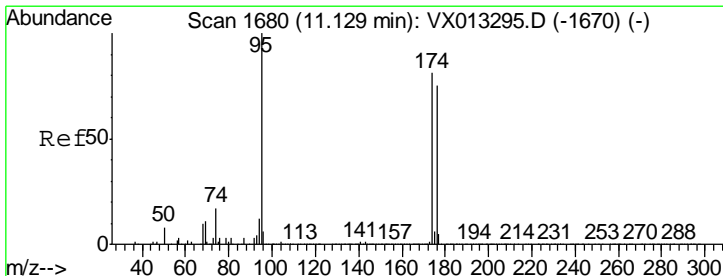
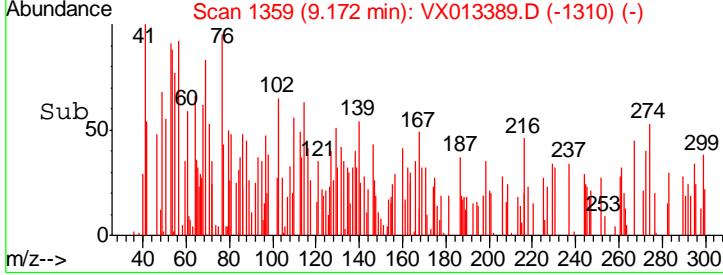
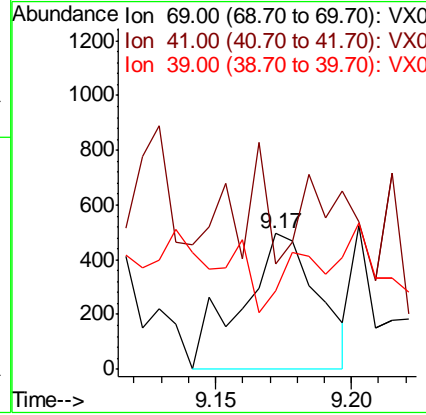
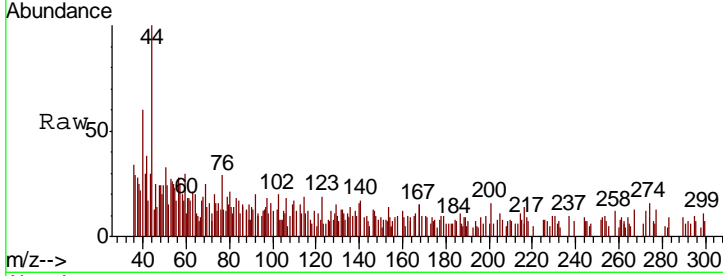




#56
 Ethyl methacrylate
 Concen: 1.627 ug/l
 RT: 9.17 min Scan# 1359
 Delta R.T. 0.00 min
 Lab File: VX013389.D
 Acq: 12 Nov 2019 16:51

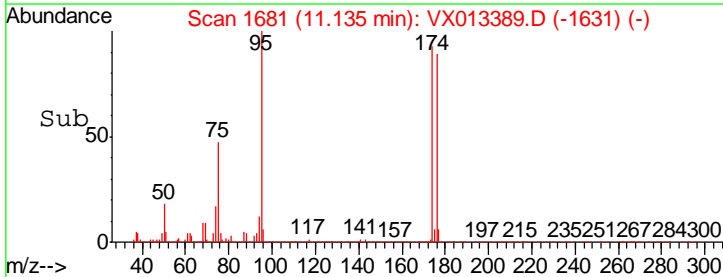
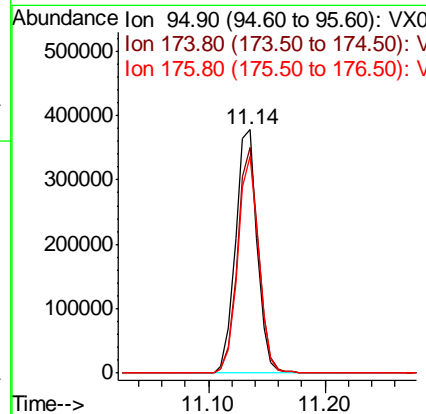
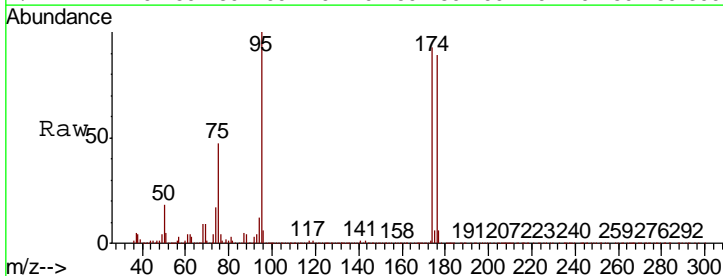
Instrument :
 MSVOA_X
 ClientSampleId :
 KY038PS038-191111

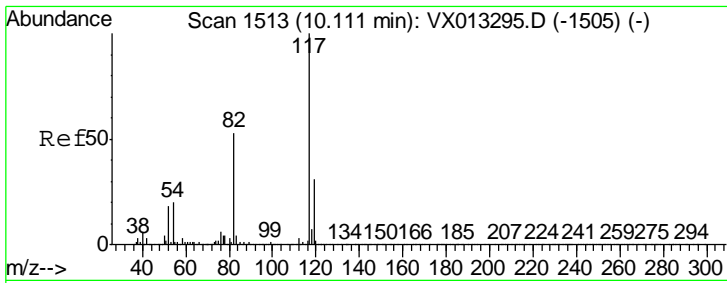
Tgt Ion	Resp	Lower	Upper
69	958		
41	53.1	56.2	84.2#
39	12.5	31.1	46.7#



#62
 4-Bromofluorobenzene
 Concen: 46.631 ug/l
 RT: 11.14 min Scan# 1681
 Delta R.T. 0.01 min
 Lab File: VX013389.D
 Acq: 12 Nov 2019 16:51

Tgt Ion	Resp	Lower	Upper
95	490782		
174	90.8	0.0	179.8
176	87.0	0.0	173.0



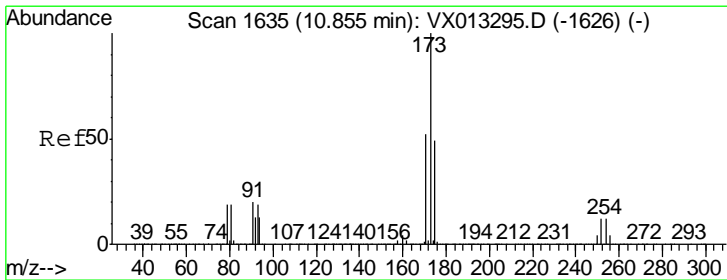
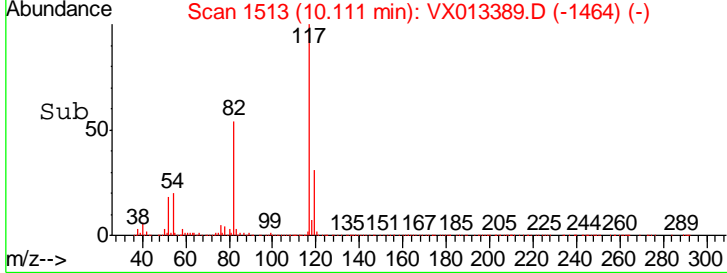
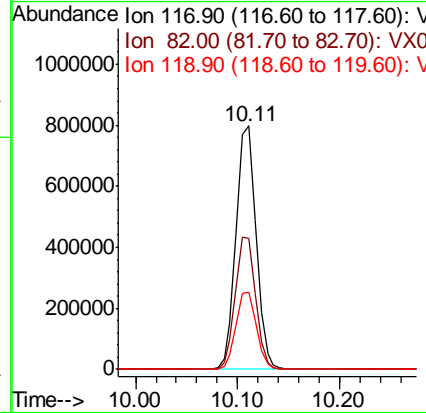
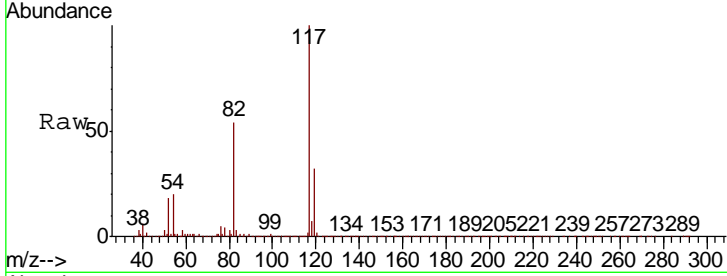


#63
 Chlorobenzene-d5
 Concen: 50.000 ug/l
 RT: 10.11 min Scan# 1513
 Delta R.T. -0.00 min
 Lab File: VX013389.D
 Acq: 12 Nov 2019 16:51

Instrument : MSVOA_X
 ClientSampled : KY038PS038-191111

Tgt Ion: 117 Resp: 1084530

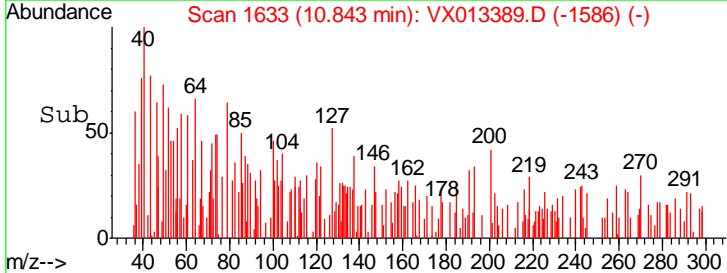
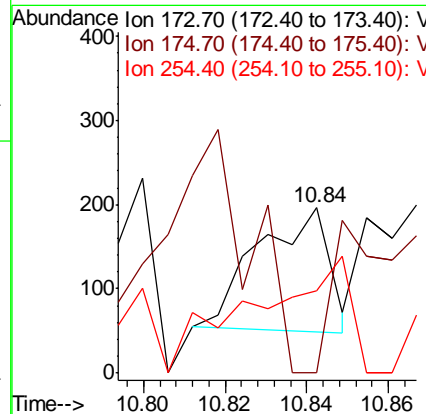
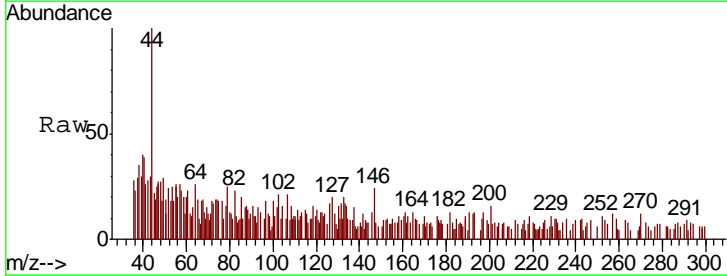
Ion	Ratio	Lower	Upper
117	100		
82	53.6	42.6	64.0
119	31.5	24.8	37.2

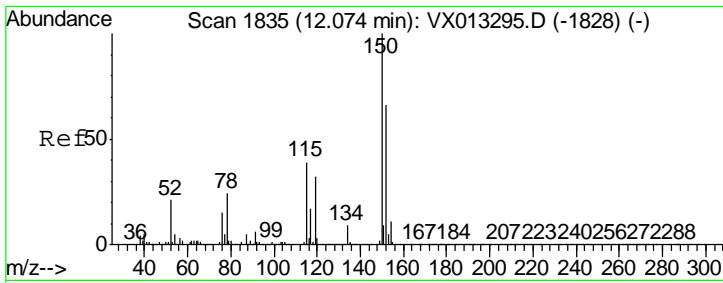


#71
 Bromoform
 Concen: 3.225 ug/l
 RT: 10.84 min Scan# 1633
 Delta R.T. -0.01 min
 Lab File: VX013389.D
 Acq: 12 Nov 2019 16:51

Tgt Ion: 173 Resp: 176

Ion	Ratio	Lower	Upper
173	100		
175	0.0	24.8	74.4#
254	127.8	0.2	0.2#

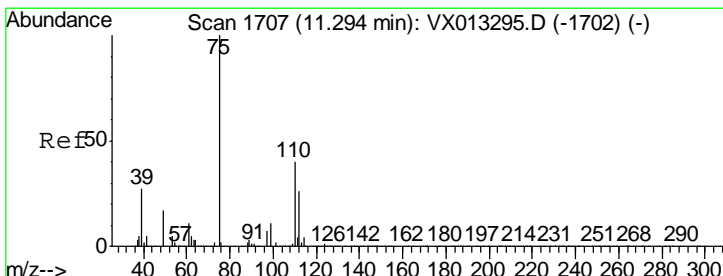
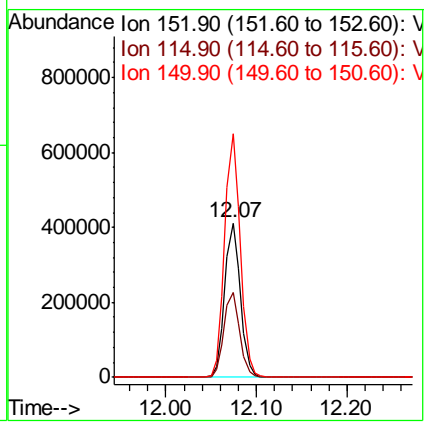
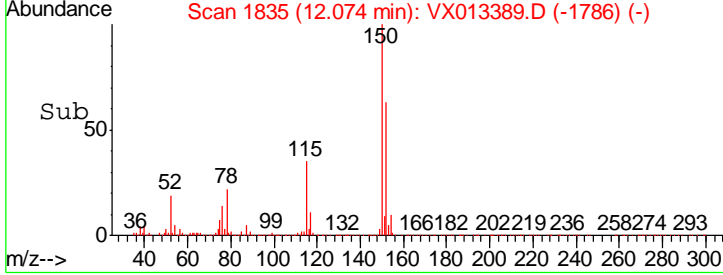
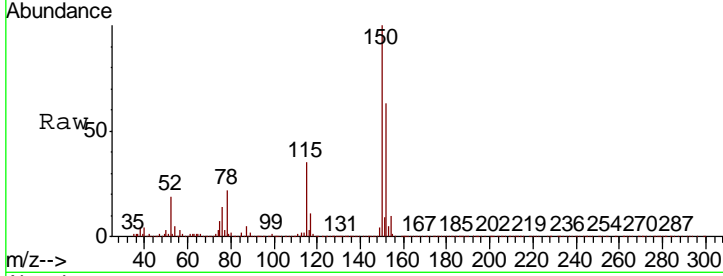




#72
 1,4-Dichlorobenzene-d4
 Concen: 50.000 ug/l
 RT: 12.07 min Scan# 1835
 Delta R.T. -0.00 min
 Lab File: VX013389.D
 Acq: 12 Nov 2019 16:51

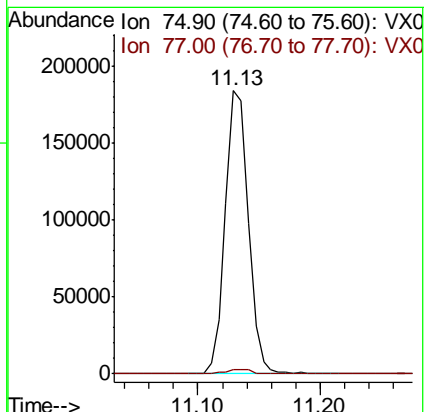
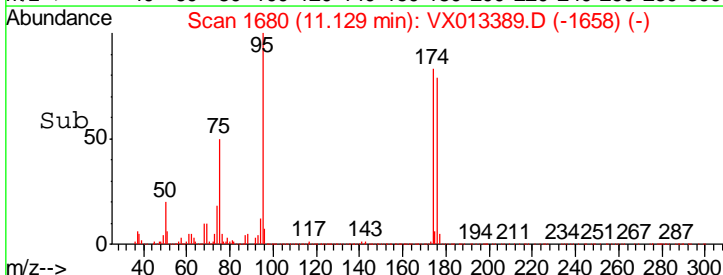
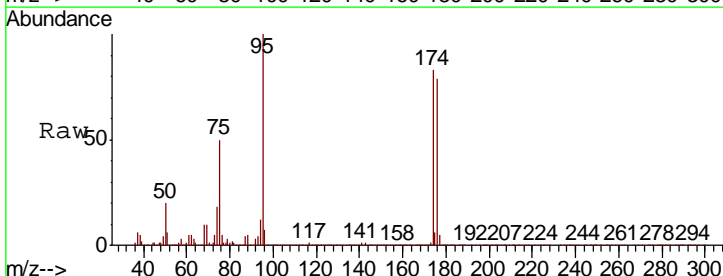
Instrument : MSVOA_X
 ClientSampled : KY038PS038-191111

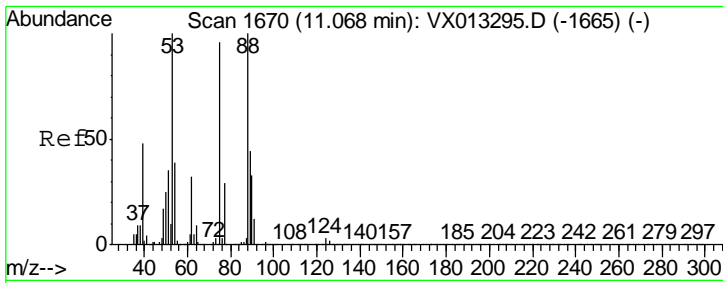
Tgt Ion	Resp	Lower	Upper
152	100		
115	55.2	39.5	118.3
150	157.6	0.0	344.4



#76
 1,2,3-Trichloropropane
 Concen: 23.854 ug/l
 RT: 11.13 min Scan# 1680
 Delta R.T. -0.16 min
 Lab File: VX013389.D
 Acq: 12 Nov 2019 16:51

Tgt Ion	Resp	Lower	Upper
75	100		
77	1.9	22.3	66.8#





#81
 trans-1,4-Dichloro-2-butene
 Concen: 61.400 ug/l
 RT: 11.13 min Scan# 1680
 Delta R.T. 0.06 min
 Lab File: VX013389.D
 Acq: 12 Nov 2019 16:51

Instrument :
 MSVOA_X
 ClientSampleId :
 KY038PS038-191111

Tot Ion: 75 Resp: 240111

Ion	Ratio	Lower	Upper
75	100		
53	0.4	81.0	121.6#
89	0.2	36.0	54.0#

