

Data Path : Z:\VOASRV\HPCHEM1\MSVOA X\DATA\VX111219\  
 Data File : VX013378.D  
 Acq On : 12 Nov 2019 11:59  
 Operator : JC/SP  
 Sample : K5765-02  
 Misc : 5.0mL/MSVOA X/WATER  
 ALS Vial : 6 Sample Multiplier: 1

Instrument :  
 MSVOA\_X  
 ClientSampleId :  
 TT-009-IDW/GW-20191107

Integration Parameters: RTEINT3.P  
 Integrator: RTE  
 Smoothing : OFF Filtering: 5  
 Sampling : 1 Min Area: 0 % of largest Peak  
 Start Thrs: 0.2 Max Peaks: 100  
 Stop Thrs : 0 Peak Location: TOP

If leading or trailing edge < 100 prefer < Baseline drop else tangent >  
 Peak separation: 5

Method : Z:\VOASRV\HPCHEM1\MSVOA X\METHOD\624X111119W.M  
 Title : METHOD 624 VOLATILE ORGANIC ANALYSIS

Signal : TIC

peak #	R.T. min	first scan	max scan	last scan	PK TY	peak height	corr. area	corr. % max.	% of total
1	1.600	109	117	121	rBV10	39861	84593	3.52%	0.875%
2	3.002	340	347	355	rBV	23485	49629	2.06%	0.513%
3	5.002	661	675	688	rBV2	308929	922774	38.38%	9.544%
4	6.051	839	847	864	rBV	333340	851777	35.43%	8.810%
5	6.849	970	978	990	rBV	733932	1721355	71.60%	17.803%
6	7.209	1029	1037	1043	rBV2	58203	119467	4.97%	1.236%
7	8.709	1276	1283	1291	rBV	1609766	2404004	100.00%	24.864%
8	9.331	1379	1385	1390	rBV3	30332	59227	2.46%	0.613%
9	10.105	1507	1512	1520	rBV	1432098	1949370	81.09%	20.162%
10	11.135	1674	1681	1688	rBV	1127582	1468771	61.10%	15.191%
11	11.361	1712	1718	1725	rVB4	18902	37758	1.57%	0.391%

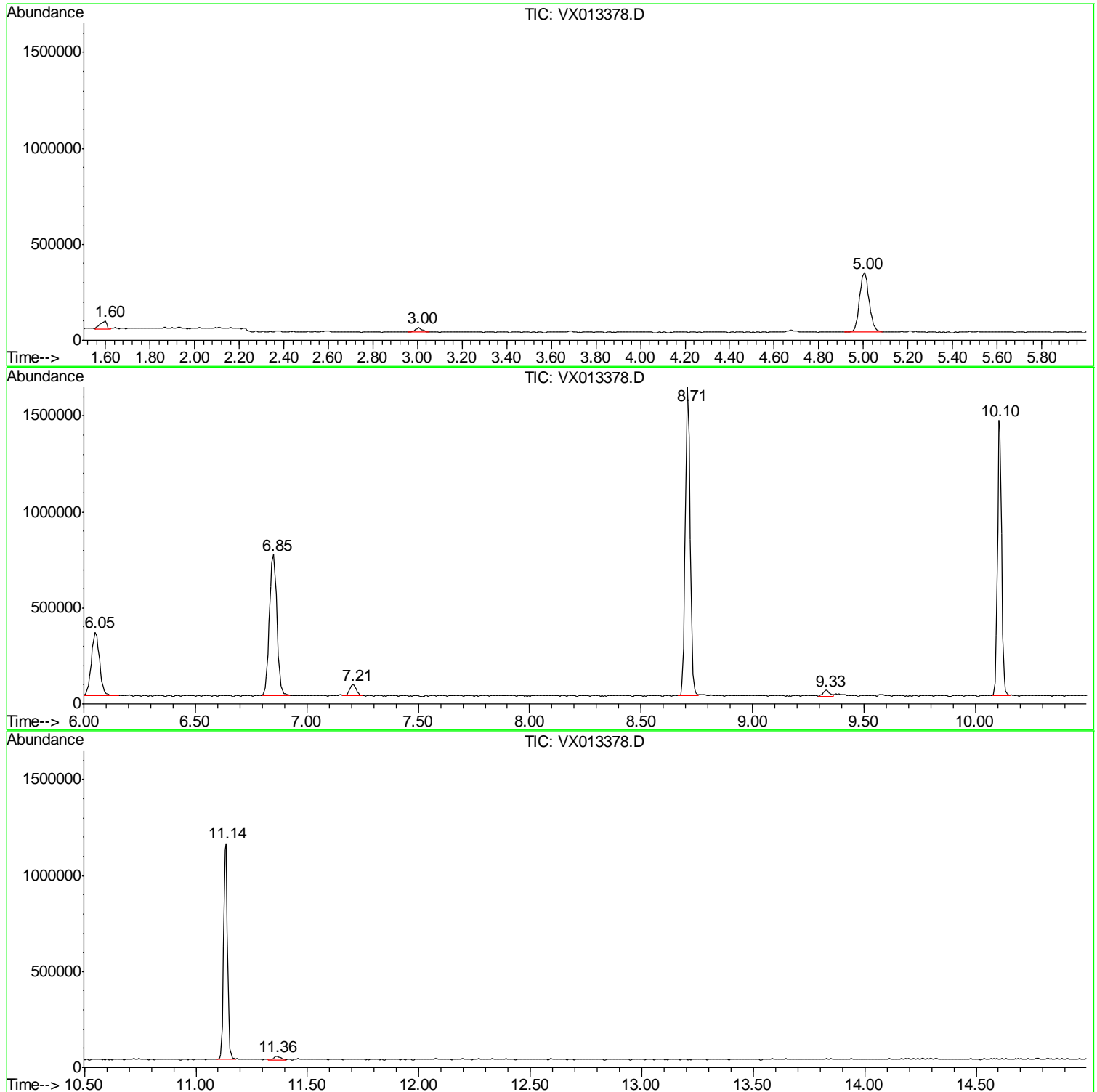
Sum of corrected areas: 9668725

Data Path : Z:\VOASRV\HPCHEM1\MSVOA X\DATA\VX111219\  
Data File : VX013378.D  
Acq On : 12 Nov 2019 11:59  
Operator : JC/SP  
Sample : K5765-02  
Misc : 5.0mL/MSVOA X/WATER  
ALS Vial : 6 Sample Multiplier: 1

Instrument :  
MSVOA\_X  
ClientSampled :  
TT-009-IDW/GW-20191107

Quant Method : Z:\VOASRV\HPCHEM1\MSVOA X\METHOD\624X111119W.M  
Quant Title : METHOD 624 VOLATILE ORGANIC ANALYSIS

TIC Library : C:\DATABASE\NIST02.L  
TIC Integration Parameters: LSCINT.P



Data Path : Z:\VOASRV\HPCHEM1\MSVOA\_X\DATA\VX111219\  
Data File : VX013378.D  
Acq On : 12 Nov 2019 11:59  
Operator : JC/SP  
Sample : K5765-02  
Misc : 5.0mL/MSVOA\_X/WATER  
ALS Vial : 6 Sample Multiplier: 1

Instrument :  
MSVOA\_X  
ClientSampleId :  
TT-009-IDW/GW-20191107

Quant Method : Z:\VOASRV\HPCHEM1\MSVOA\_X\METHOD\624X111119W.M  
Quant Title : METHOD 624 VOLATILE ORGANIC ANALYSIS

TIC Library : C:\DATABASE\NIST02.L  
TIC Integration Parameters: LSCINT.P

No Library Search Compounds Detected

\*\*\*\*\*

Data Path : Z:\VOASRV\HPCHEM1\MSVOA\_X\DATA\VX111219\  
Data File : VX013378.D  
Acq On : 12 Nov 2019 11:59  
Operator : JC/SP  
Sample : K5765-02  
Misc : 5.0mL/MSVOA\_X/WATER  
ALS Vial : 6 Sample Multiplier: 1

Instrument :  
MSVOA\_X  
ClientSampleId :  
TT-009-IDW/GW-20191107

Quant Method : Z:\VOASRV\HPCHEM1\MSVOA\_X\METHOD\624X111119W.M  
Quant Title : METHOD 624 VOLATILE ORGANIC ANALYSIS

TIC Library : C:\DATABASE\NIST02.L  
TIC Integration Parameters: LSCINT.P

TIC Top Hit name	RT	EstConc	Units	Response	--Internal Standard--			
					#	RT	Resp	Conc

---