

Data Path : Z:\VOASRV\HPCHEM1\MSVOA X\DATA\VX111219\
 Data File : VX013384.D
 Acq On : 12 Nov 2019 14:55
 Operator : JC/SP
 Sample : K5803-01
 Misc : 5.0mL/MSVOA X/WATER
 ALS Vial : 12 Sample Multiplier: 1

Instrument :
 MSVOA_X
 ClientSampleId :
 TB-01-191111

Integration Parameters: RTEINT.P
 Integrator: RTE
 Smoothing : ON Filtering: 5
 Sampling : 1 Min Area: 3 % of largest Peak
 Start Thrs: 0.2 Max Peaks: 100
 Stop Thrs : 0 Peak Location: TOP

If leading or trailing edge < 100 prefer < Baseline drop else tangent >
 Peak separation: 5

Method : Z:\VOASRV\HPCHEM1\MSVOA_X\METHOD\82X103119W.M
 Title : SW846 8260

Signal : TIC

peak #	R.T. min	first scan	max scan	last scan	PK TY	peak height	corr. area	corr. % max.	% of total
1	1.070	26	30	38	rBV	1781929	2292103	60.60%	10.474%
2	1.265	59	62	67	rBV	26967	39523	1.04%	0.181%
3	1.601	109	117	120	rVB10	42181	84707	2.24%	0.387%
4	5.484	744	754	766	rBV	421869	1216753	32.17%	5.560%
5	5.643	770	780	793	rVB	740674	2077741	54.93%	9.495%
6	6.045	836	846	859	rBV	480871	1243800	32.89%	5.684%
7	6.843	966	977	987	rBV	1178297	2731651	72.22%	12.483%
8	8.709	1276	1283	1291	rBV	2450584	3782207	100.00%	17.284%
9	10.105	1506	1512	1521	rBV	2400999	3161645	83.59%	14.448%
10	11.129	1675	1680	1694	rBV	1871225	2418750	63.95%	11.053%
11	12.074	1829	1835	1842	rBV	2324704	2833990	74.93%	12.951%

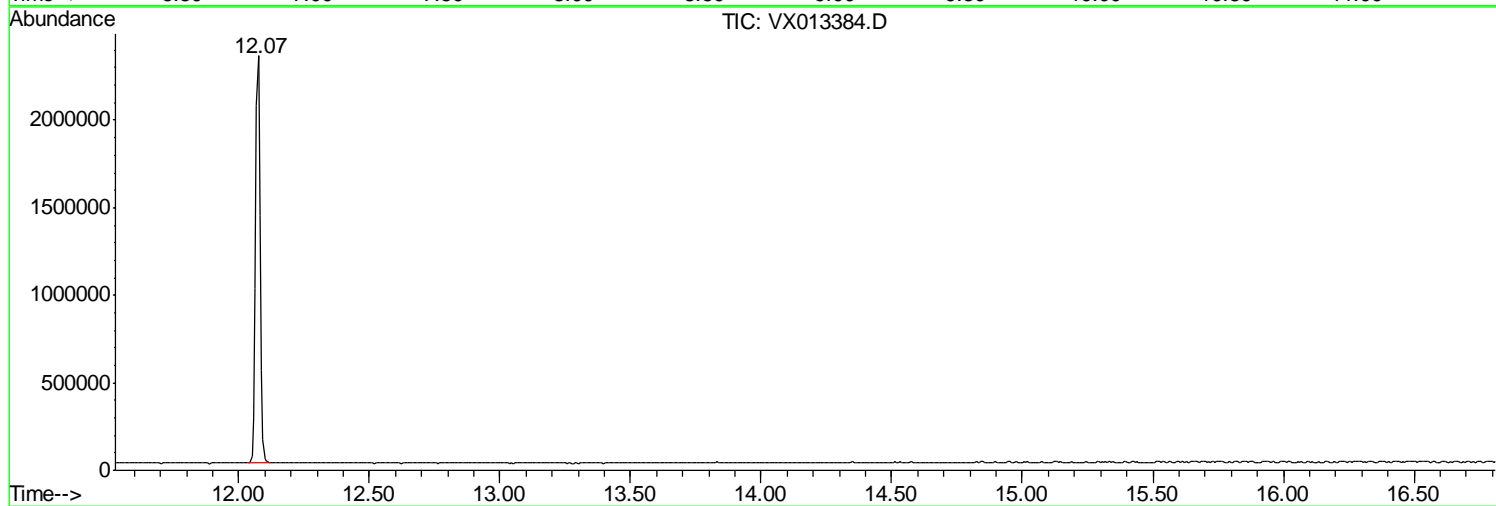
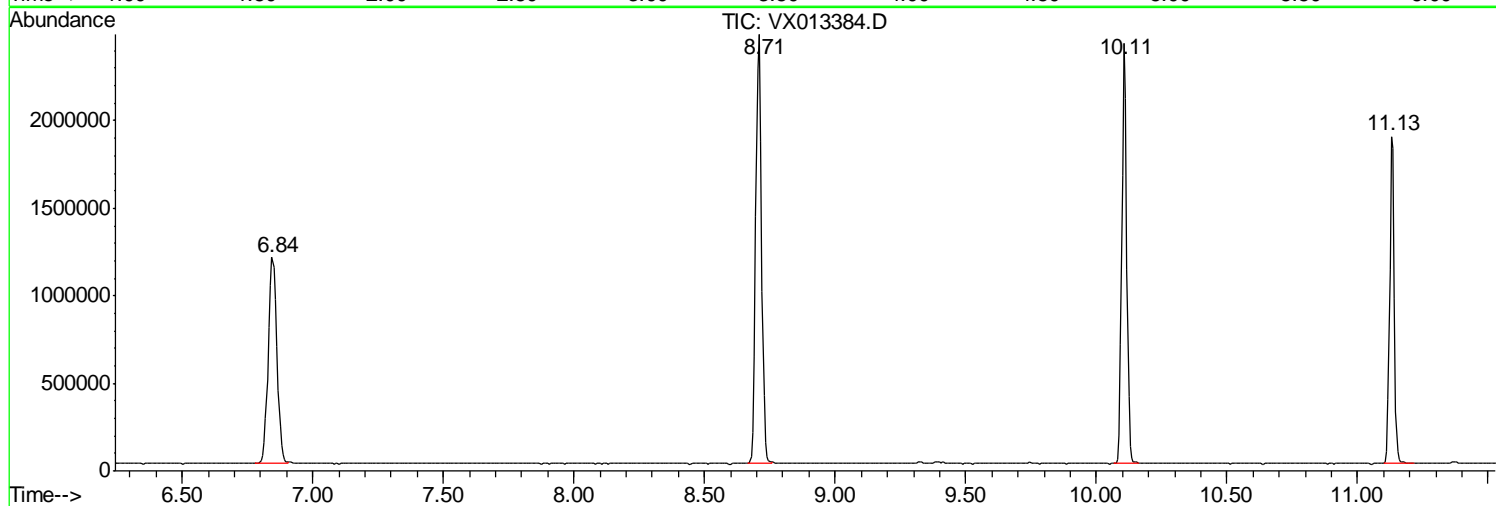
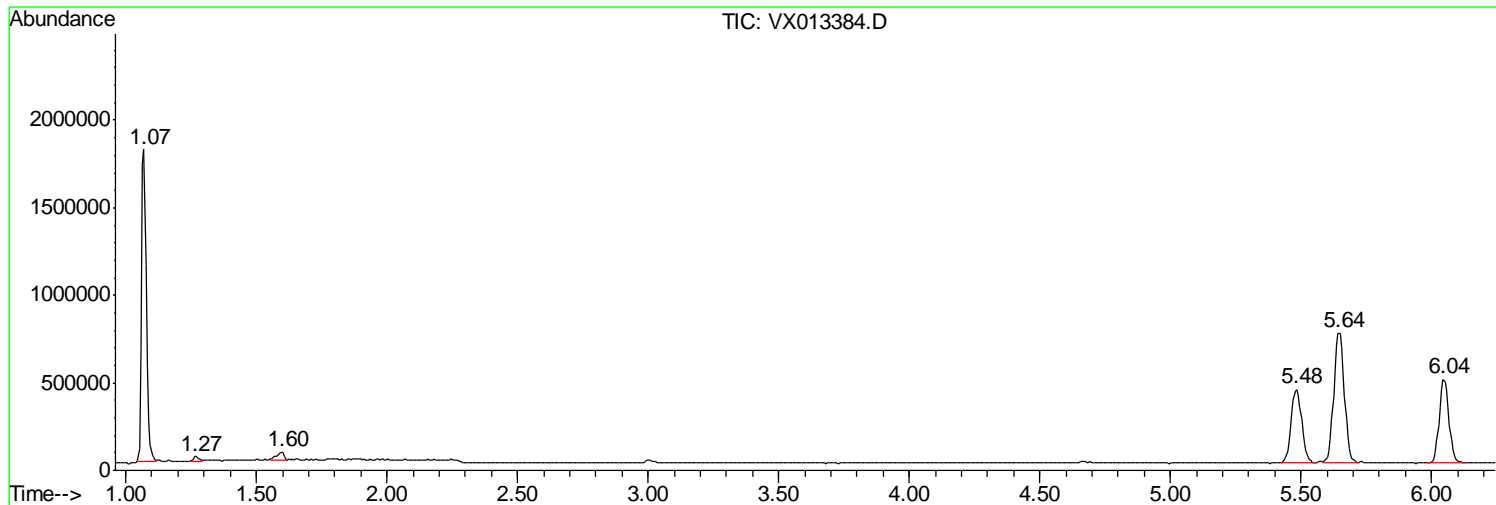
Sum of corrected areas: 21882870

Data Path : Z:\VOASRV\HPCHEM1\MSVOA X\DATA\VX111219\
Data File : VX013384.D
Acq On : 12 Nov 2019 14:55
Operator : JC/SP
Sample : K5803-01
Misc : 5.0mL/MSVOA X/WATER
ALS Vial : 12 Sample Multiplier: 1

Instrument :
MSVOA_X
ClientSampled :
TB-01-191111

Quant Method : Z:\VOASRV\HPCHEM1\MSVOA_X\METHOD\82X103119W.M
Quant Title : SW846 8260

TIC Library : C:\DATABASE\NIST11.L
TIC Integration Parameters: LSCINT.P



Data Path : Z:\VOASRV\HPCHEM1\MSVOA_X\DATA\VX111219\
Data File : VX013384.D
Acq On : 12 Nov 2019 14:55
Operator : JC/SP
Sample : K5803-01
Misc : 5.0mL/MSVOA_X/WATER
ALS Vial : 12 Sample Multiplier: 1

Instrument :
MSVOA_X
ClientSampleId :
TB-01-191111

Quant Method : Z:\VOASRV\HPCHEM1\MSVOA_X\METHOD\82X103119W.M
Quant Title : SW846 8260

TIC Library : C:\DATABASE\NIST11.L
TIC Integration Parameters: LSCINT.P

No Library Search Compounds Detected

Data Path : Z:\VOASRV\HPCHEM1\MSVOA_X\DATA\VX111219\
Data File : VX013384.D
Acq On : 12 Nov 2019 14:55
Operator : JC/SP
Sample : K5803-01
Misc : 5.0mL/MSVOA_X/WATER
ALS Vial : 12 Sample Multiplier: 1

Instrument :
MSVOA_X
ClientSampleId :
TB-01-191111

Quant Method : Z:\VOASRV\HPCHEM1\MSVOA_X\METHOD\82X103119W.M
Quant Title : SW846 8260

TIC Library : C:\DATABASE\NIST11.L
TIC Integration Parameters: LSCINT.P

TIC Top Hit name	RT	EstConc	Units	Response	--Internal Standard--			
					#	RT	Resp	Conc
