

Data Path : Z:\voasrv\HPCHEM1\MSVOA_X\Data\VX111424\
 Data File : VX043856.D
 Acq On : 14 Nov 2024 16:30
 Operator : JC/MD
 Sample : VSTD20040
 Misc : 5.0mL/MSVOA_X/WATER
 ALS Vial : 9 Sample Multiplier: 1

Instrument :
 MSVOA_X
ClientSampleId :

Quant Time: Nov 15 02:08:21 2024
 Quant Method : Z:\voasrv\HPCHEM1\MSVOA_X\Method\SFAMXLM111424WMA.M
 Quant Title : VOC Analysis
 QLast Update : Fri Nov 15 02:05:35 2024
 Response via : Initial Calibration

Compound	R.T.	QI on	Response	Conc	Units	Dev(Min)	
Internal Standards							
1) 1,4-Difluorobenzene	6.757	114	230649	50.000	ug/L	0.00	
28) Chlorobenzene-d5	10.055	117	205825	50.000	ug/L	0.00	
58) 1,4-Dichlorobenzene-d4	12.024	152	106593	50.000	ug/L	0.00	
System Monitoring Compounds							
4) Vinyl chloride-d3	1.367	65	293440	204.892	ug/L	0.00	
7) Chloroethane-d5	1.648	69	196261	207.155	ug/L	0.00	
11) 1,1-Dichloroethene-d2	2.294	65	141373	218.783	ug/L	0.00	
21) 2-Butanone-d5	4.464	46	318106	417.673	ug/L	0.00	
24) Chloroform-d	5.050	84	643790	211.277	ug/L	0.00	
26) 1,2-Dichloroethane-d4	5.952	65	396048	203.530	ug/L	0.00	
32) Benzene-d6	5.970	84	1180306	206.115	ug/L	0.00	
36) 1,2-Dichloropropane-d6	7.305	67	339990	208.467	ug/L	0.00	
41) Toluene-d8	8.646	98	1103079	203.719	ug/L	0.00	
43) trans-1,3-Dichloroprop...	8.945	79	185470	225.653	ug/L	0.00	
47) 2-Hexanone-d5	9.384	63	256883	426.348	ug/L	0.00	
56) 1,1,2,2-Tetrachloroeth...	11.189	84	461273	205.547	ug/L	0.00	
66) 1,2-Dichlorobenzene-d4	12.317	152	440458	198.074	ug/L	0.00	
Target Compounds							
2) Dichlorodifluoromethane	1.166	85	339674	197.827	ug/L	98	
3) Chloromethane	1.294	50	276733	199.787	ug/L	99	
5) Vinyl chloride	1.373	62	298658	199.594	ug/L	97	
6) Bromomethane	1.599	94	193508	197.022	ug/L	95	
8) Chloroethane	1.666	64	158965	196.744	ug/L	96	
9) Trichlorofluoromethane	1.867	101	526648	196.411	ug/L	100	
10) 1,1,2-Trichloro-1,2,2-...	2.318	101	304090	201.059	ug/L	99	
12) 1,1-Dichloroethene	2.306	96	280269	201.629	ug/L #	77	
13) Acetone	2.385	43	327669	358.568	ug/L	99	
14) Carbon disulfide	2.501	76	698356	238.187	ug/L	99	
15) Methyl Acetate	2.702	43	254266	201.976	ug/L	98	
16) Methylene chloride	2.782	84	301324	198.460	ug/L	100	
17) trans-1,2-Dichloroethene	3.086	96	295144	210.648	ug/L	99	
18) Methyl tert-butyl Ether	3.111	73	999881	204.723	ug/L	99	
19) 1,1-Dichloroethane	3.599	63	505125	204.465	ug/L	99	
20) cis-1,2-Dichloroethene	4.483	96	344781	205.056	ug/L	96	
22) 2-Butanone	4.562	43	383037	379.766	ug/L	99	
23) Bromochloromethane	4.897	128	185212	204.972	ug/L	96	
25) Chloroform	5.086	83	582237	203.406	ug/L	96	
27) 1,2-Dichloroethane	6.080	62	440033	196.066	ug/L	99	
29) Cyclohexane	5.464	56	430571	201.313	ug/L	98	
30) 1,1,1-Trichloroethane	5.379	97	532513	207.603	ug/L	99	
31) Carbon tetrachloride	5.671	117	477297	215.641	ug/L	99	
33) Benzene	6.031	78	1117970	199.097	ug/L	100	
34) Trichloroethene	7.116	95	326786	175.322	ug/L	97	
35) Methyl cyclohexane	7.378	83	470530	197.514	ug/L	98	
37) 1,2-Dichloropropane	7.427	63	273079	199.324	ug/L	100	
38) Bromochloromethane	7.817	83	410274	215.884	ug/L	98	
39) cis-1,3-Dichloropropene	8.366	75	507913	219.000	ug/L	97	
40) 4-Methyl-2-pentanone	8.573	43	656920	401.990	ug/L	100	
42) Toluene	8.713	91	1221939	199.411	ug/L	100	
44) trans-1,3-Dichloropropene	8.976	75	474682	220.660	ug/L	99	

Data Path : Z:\voasrv\HPCHEM1\MSVOA_X\Data\VX111424\
 Data File : VX043856.D
 Acq On : 14 Nov 2024 16:30
 Operator : JC/MD
 Sample : VSTD20040
 Misc : 5.0mL/MSVOA_X/WATER
 ALS Vial : 9 Sample Multiplier: 1

Instrument :
 MSVOA_X
ClientSampleId :

Quant Time: Nov 15 02:08:21 2024
 Quant Method : Z:\voasrv\HPCHEM1\MSVOA_X\Method\SFAMXML111424WMA.M
 Quant Title : VOC Analysis
 QLast Update : Fri Nov 15 02:05:35 2024
 Response via : Initial Calibration

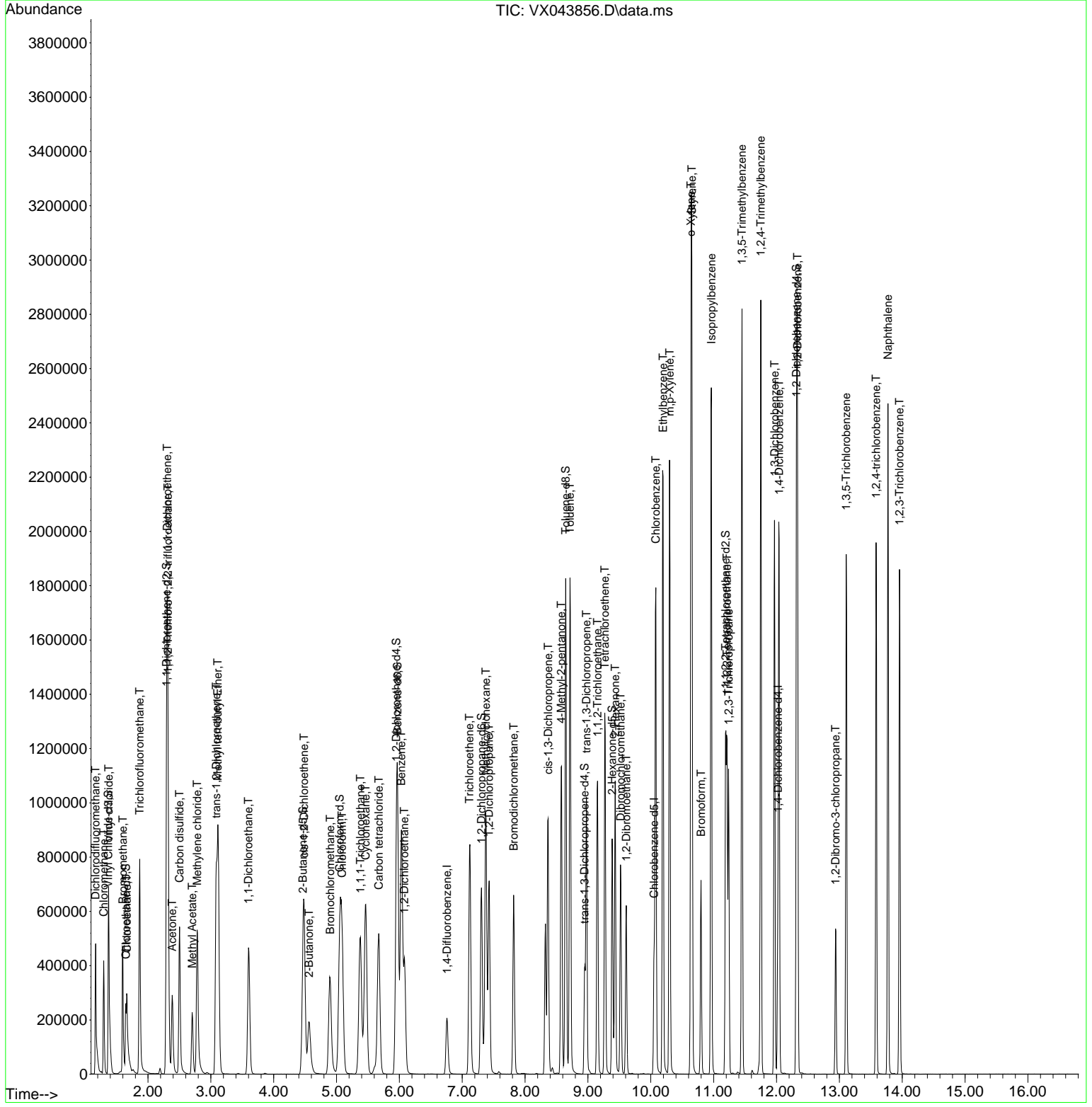
Compound	R. T.	QI on	Response	Conc	Units	Dev(Min)
45) 1, 1, 2-Tri chloroethane	9.152	97	305983	193.819	ug/L	98
46) Tetrachloroethene	9.268	164	255587	190.629	ug/L	98
48) 2-Hexanone	9.433	43	524874	394.959	ug/L	99
49) Dibromochloromethane	9.518	129	346537	223.194	ug/L	97
50) 1, 2-Dibromoethane	9.610	107	337230	198.684	ug/L	97
51) Chlorobenzene	10.079	112	825234	197.120	ug/L	98
52) Ethyl benzene	10.195	91	1360431	202.940	ug/L	100
53) m, p-Xylene	10.299	106	544304	201.976	ug/L	94
54) o-Xylene	10.640	106	530484	197.714	ug/L	100
55) Styrene	10.652	104	905326	207.308	ug/L	96
57) 1, 1, 2, 2-Tetrachloroethane	11.213	83	442603	194.387	ug/L	99
59) Bromoform	10.798	173	254385	230.451	ug/L	97
60) Isopropyl benzene	10.963	105	1392700	194.241	ug/L	99
61) 1, 2, 3-Tri chloropropane	11.237	75	338765	186.314	ug/L	99
62) 1, 3, 5-Tri methyl benzene	11.451	105	1200490	198.826	ug/L	99
63) 1, 2, 4-Tri methyl benzene	11.750	105	1207170	200.836	ug/L	99
64) 1, 3-Di chlorobenzene	11.969	146	678506	199.194	ug/L	97
65) 1, 4-Di chlorobenzene	12.042	146	675228	198.476	ug/L	97
67) 1, 2-Di chlorobenzene	12.335	146	667799	192.269	ug/L	100
68) 1, 2-Di bromo-3-chloropropane	12.938	75	102846	234.053	ug/L	99
69) 1, 3, 5-Tri chlorobenzene	13.109	180	476104	208.561	ug/L	99
70) 1, 2, 4-tri chlorobenzene	13.585	180	445520	218.106	ug/L	100
71) Naphthalene	13.774	128	1502376	209.355	ug/L	98
72) 1, 2, 3-Tri chlorobenzene	13.956	180	443835	211.629	ug/L	98

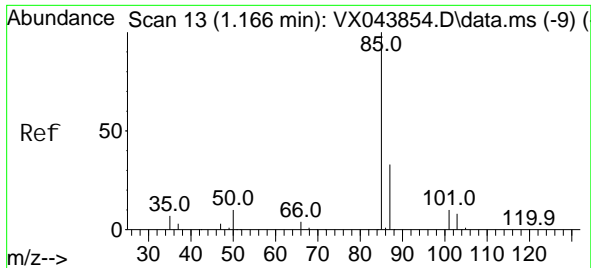
(#) = qualifier out of range (m) = manual integration (+) = signals summed

Data Path : Z:\voasrv\HPCHEM1\MSVOA_X\Data\VX111424\
 Data File : VX043856.D
 Acq On : 14 Nov 2024 16:30
 Operator : JC/MD
 Sample : VSTD20040
 Misc : 5.0mL/MSVOA_X/WATER
 ALS Vial : 9 Sample Multiplier: 1

Instrument :
 MSVOA_X
 ClientSampleId :

Quant Time: Nov 15 02:08:21 2024
 Quant Method : Z:\voasrv\HPCHEM1\MSVOA_X\Method\SFAMXLM111424WMA.M
 Quant Title : VOC Analysis
 QLast Update : Fri Nov 15 02:05:35 2024
 Response via : Initial Calibration

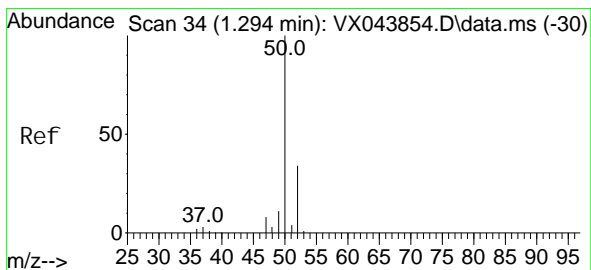
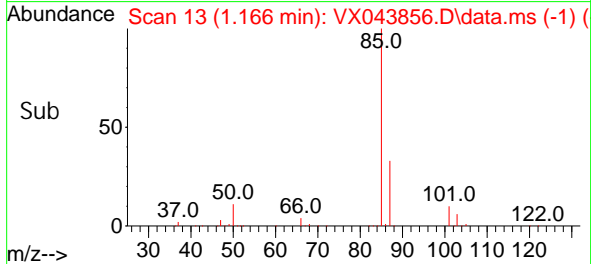
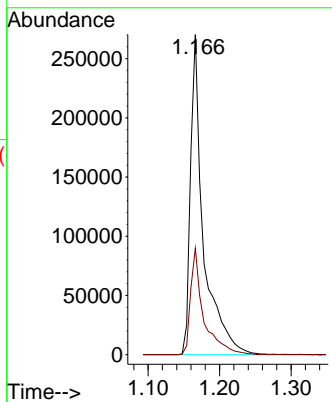
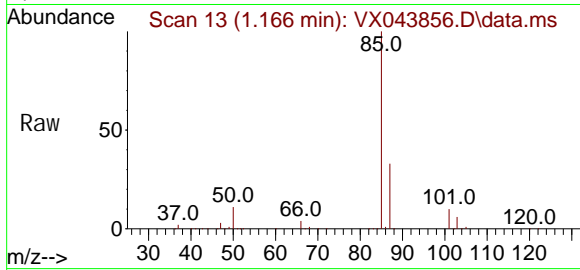




#2
 Di chl orodi fluoromethane
 Concen: 197.827 ug/L
 RT: 1.166 min Scan# 11
 Delta R.T. -0.000 min
 Lab File: VX043856.D
 Acq: 14 Nov 2024 16:30

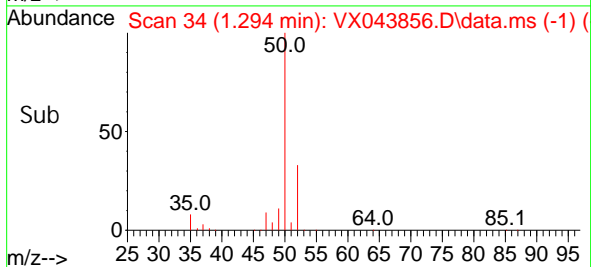
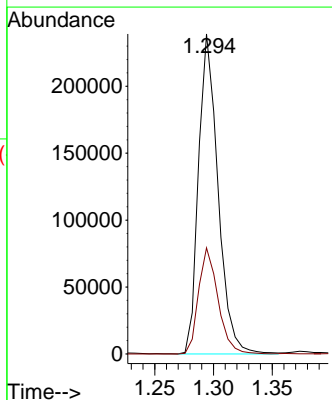
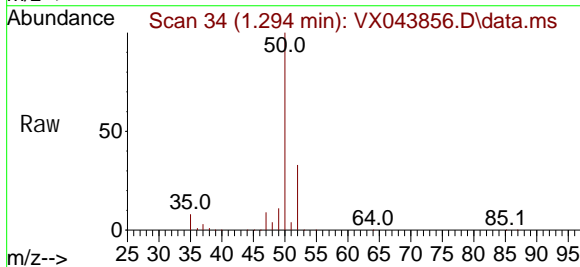
Instrument :
 MSVOA_X
 ClientSampleId :

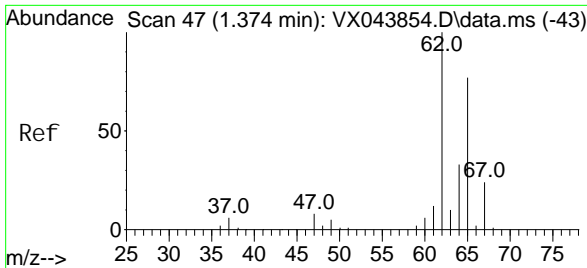
Tgt Ion: 85 Resp: 339674
 Ion Ratio Lower Upper
 85 100
 87 33.5 26.0 39.0



#3
 Chloromethane
 Concen: 199.787 ug/L
 RT: 1.294 min Scan# 34
 Delta R.T. -0.000 min
 Lab File: VX043856.D
 Acq: 14 Nov 2024 16:30

Tgt Ion: 50 Resp: 276733
 Ion Ratio Lower Upper
 50 100
 52 33.2 23.8 44.2

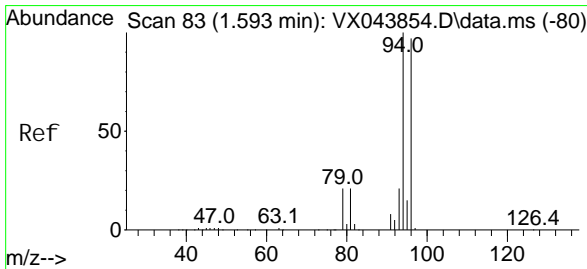
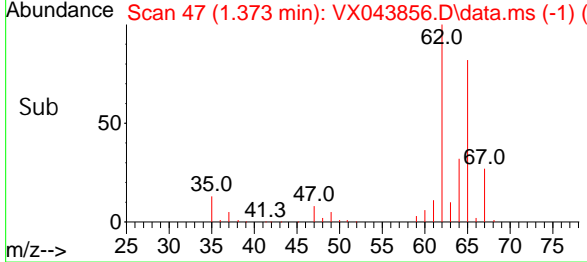
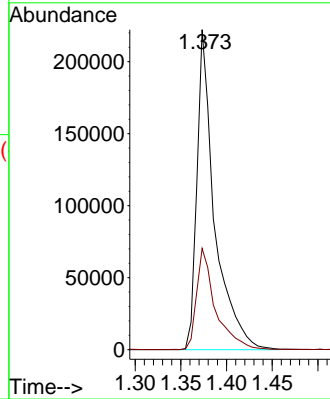
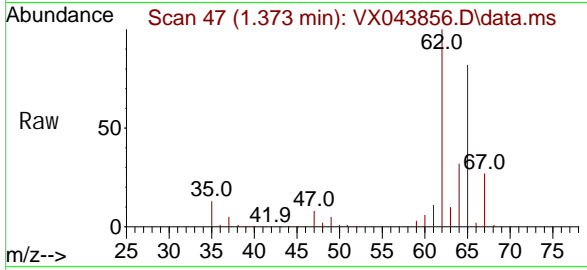




#5
 Vinyl chloride
 Concen: 199.594 ug/L
 RT: 1.373 min Scan# 41
 Delta R.T. -0.000 min
 Lab File: VX043856.D
 Acq: 14 Nov 2024 16:30

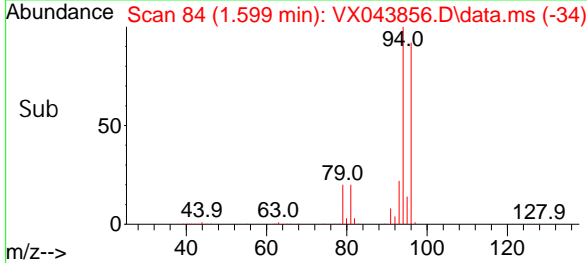
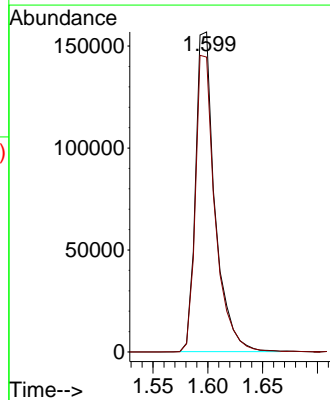
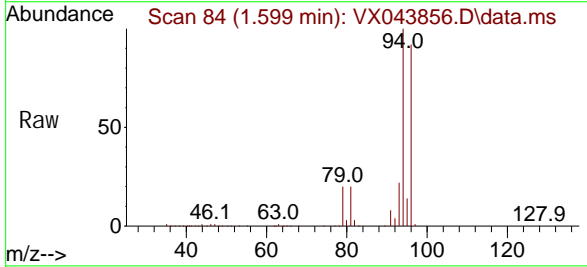
Instrument :
 MSVOA_X
 ClientSampleId :

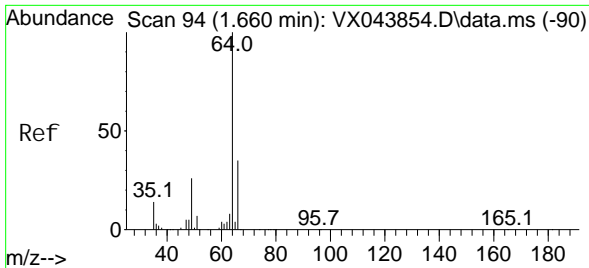
Tgt Ion: 62 Resp: 298658
 Ion Ratio Lower Upper
 62 100
 64 31.7 23.5 43.7



#6
 Bromomethane
 Concen: 197.022 ug/L
 RT: 1.599 min Scan# 84
 Delta R.T. 0.006 min
 Lab File: VX043856.D
 Acq: 14 Nov 2024 16:30

Tgt Ion: 94 Resp: 193508
 Ion Ratio Lower Upper
 94 100
 96 92.1 68.3 126.8

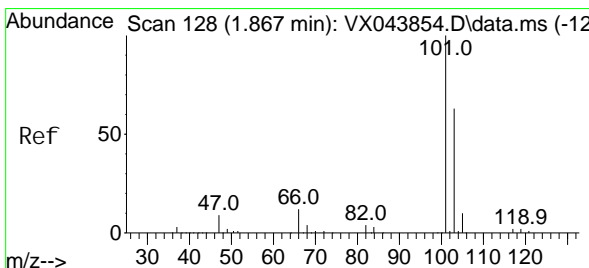
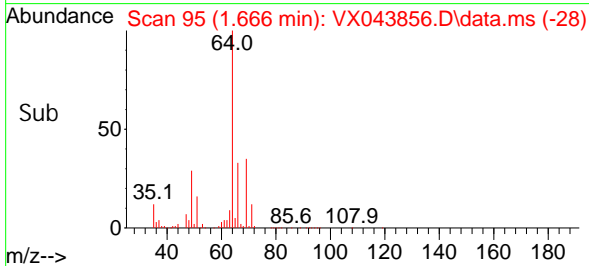
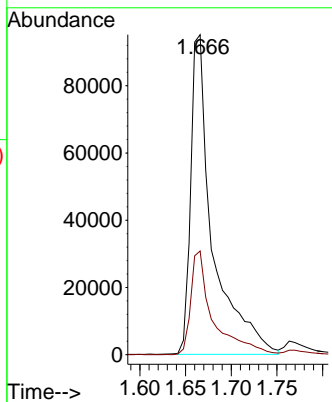
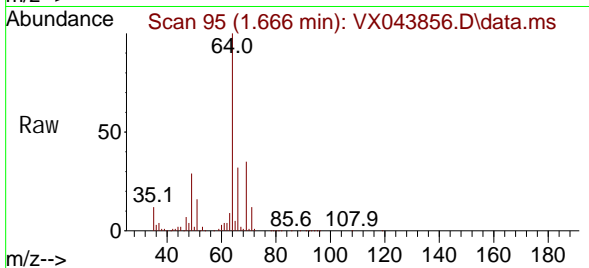




#8
 Chloroethane
 Concen: 196.744 ug/L
 RT: 1.666 min Scan# 90
 Delta R.T. 0.006 min
 Lab File: VX043856.D
 Acq: 14 Nov 2024 16:30

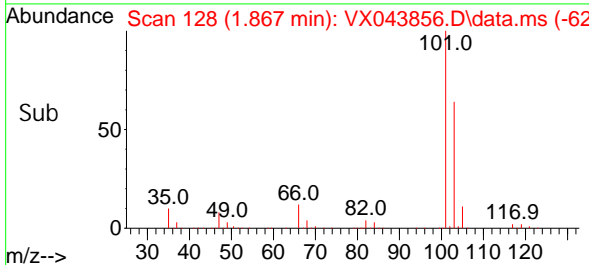
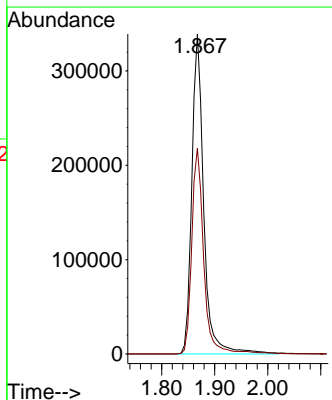
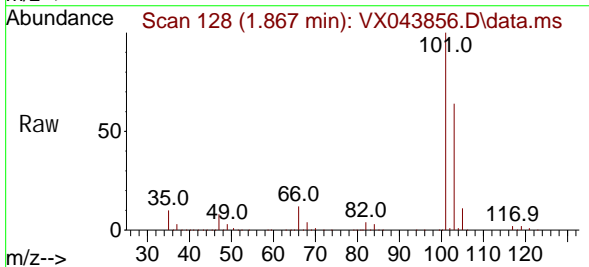
Instrument :
 MSVOA_X
 ClientSampleId :

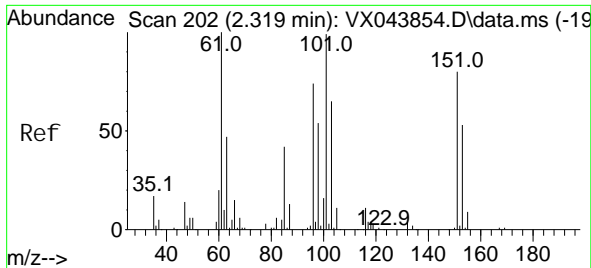
Tgt Ion: 64 Resp: 158965
 Ion Ratio Lower Upper
 64 100
 66 32.4 24.2 45.0



#9
 Trichlorofluoromethane
 Concen: 196.411 ug/L
 RT: 1.867 min Scan# 128
 Delta R.T. -0.000 min
 Lab File: VX043856.D
 Acq: 14 Nov 2024 16:30

Tgt Ion: 101 Resp: 526648
 Ion Ratio Lower Upper
 101 100
 103 63.8 51.3 76.9

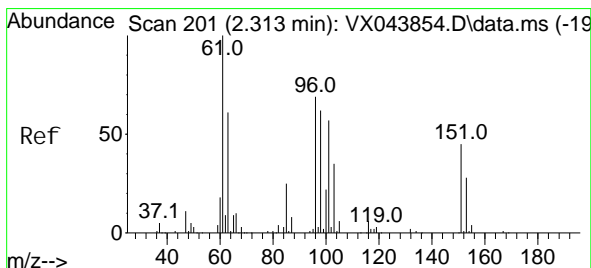
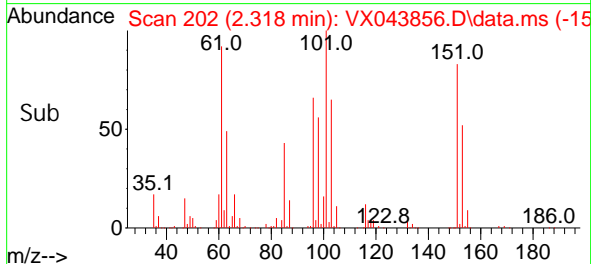
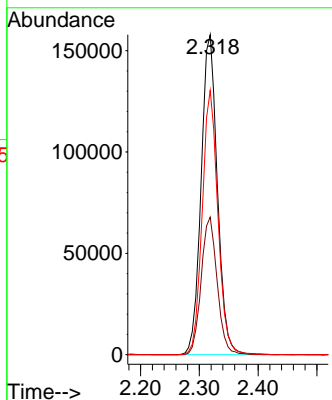
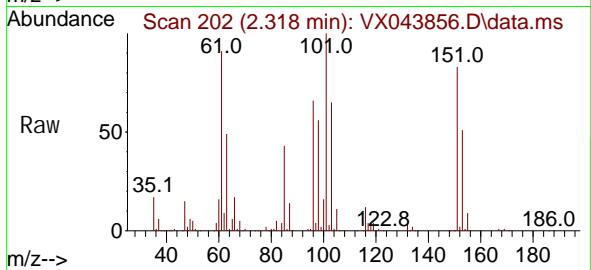




#10
 1, 1, 2-Tri chl oro-1, 2, 2- tri fl uoroethane
 Concen: 201.059 ug/L
 RT: 2.318 min Scan# 200
 Delta R.T. -0.000 min
 Lab File: VX043856.D
 Acq: 14 Nov 2024 16:30

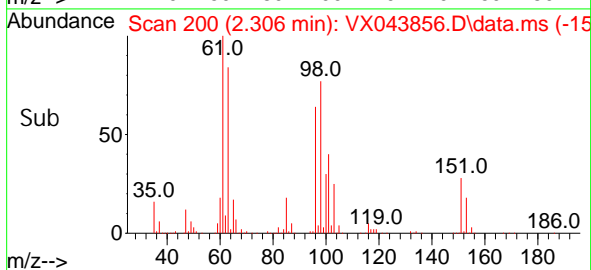
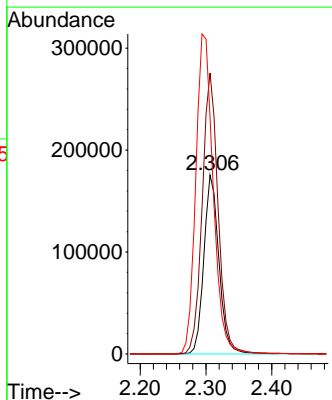
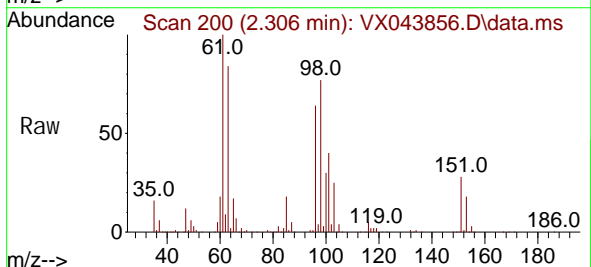
Instrument : MSVOA_X
 ClientSampleId :

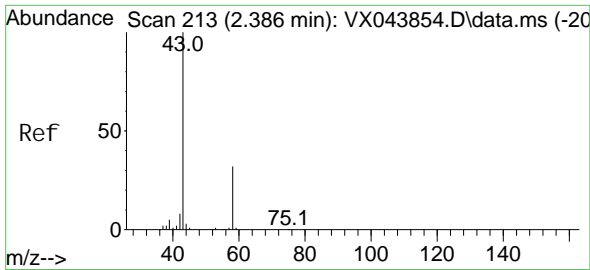
Tgt Ion	Resp	Lower	Upper
101	304090		
101	100		
85	42.2	33.8	50.6
151	79.8	64.9	97.3



#12
 1, 1-Di chl oroethene
 Concen: 201.629 ug/L
 RT: 2.306 min Scan# 200
 Delta R.T. -0.006 min
 Lab File: VX043856.D
 Acq: 14 Nov 2024 16:30

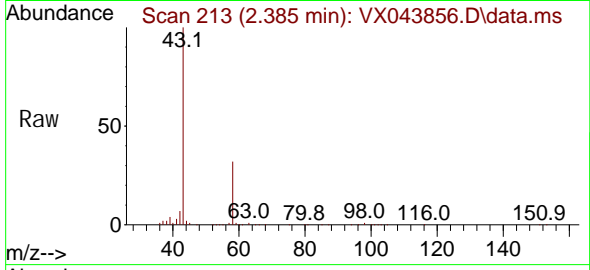
Tgt Ion	Resp	Lower	Upper
96	280269		
96	100		
61	157.1	102.2	189.8
63	132.4	62.6	116.2#



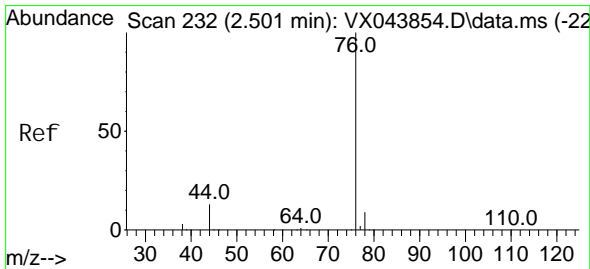
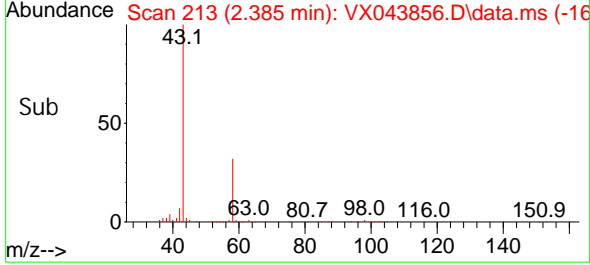
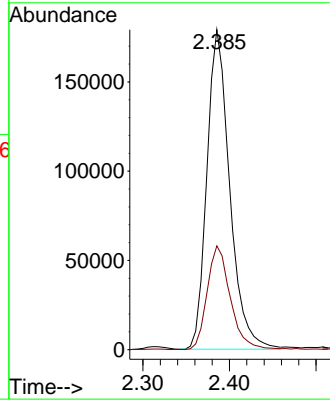


#13
 Acetone
 Concen: 358.568 ug/L
 RT: 2.385 min Scan# 213
 Delta R.T. -0.000 min
 Lab File: VX043856.D
 Acq: 14 Nov 2024 16:30

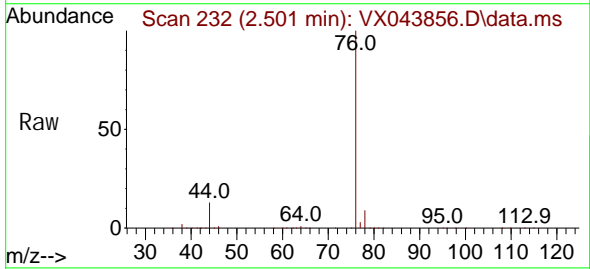
Instrument : MSVOA_X
 ClientSampleId :



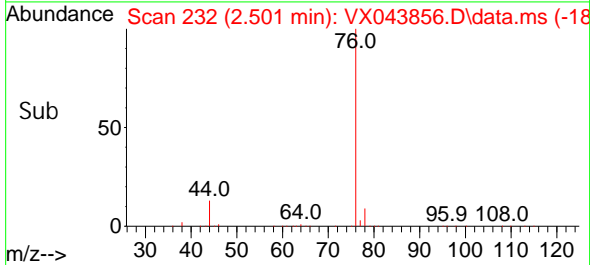
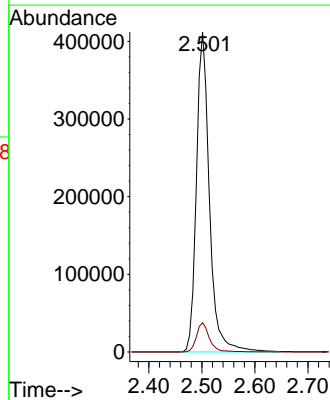
Tgt Ion: 43 Resp: 327669
 Ion Ratio Lower Upper
 43 100
 58 32.8 0.0 66.2

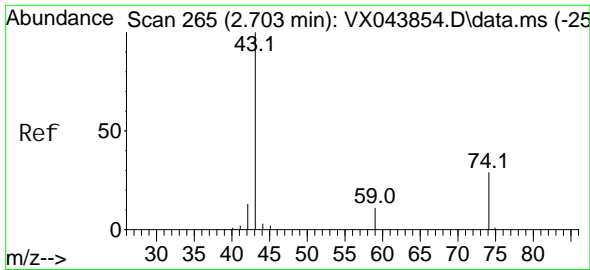


#14
 Carbon di sul fi de
 Concen: 238.187 ug/L
 RT: 2.501 min Scan# 232
 Delta R.T. -0.000 min
 Lab File: VX043856.D
 Acq: 14 Nov 2024 16:30



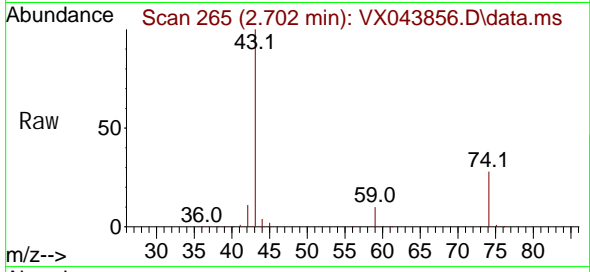
Tgt Ion: 76 Resp: 698356
 Ion Ratio Lower Upper
 76 100
 78 9.2 7.0 10.6



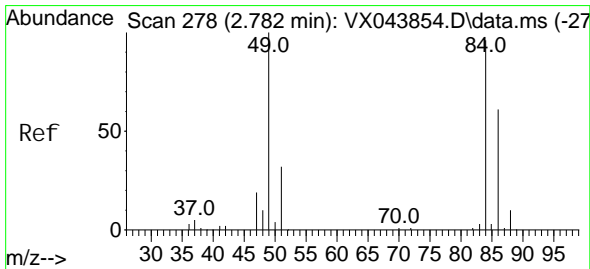
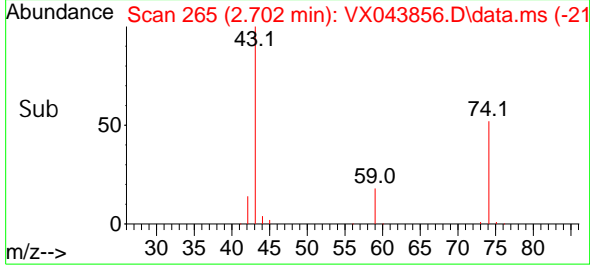
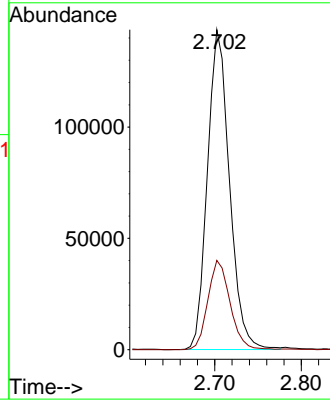


#15
Methyl Acetate
Concen: 201.976 ug/L
RT: 2.702 min Scan# 265
Delta R.T. -0.000 min
Lab File: VX043856.D
Acq: 14 Nov 2024 16:30

Instrument : MSVOA_X
ClientSampleId :

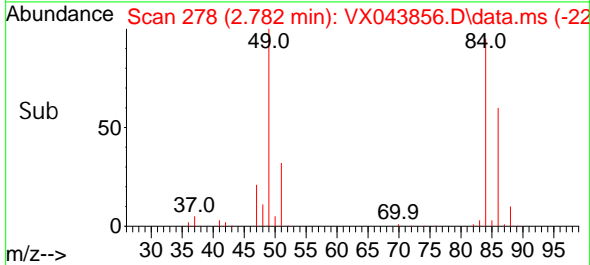
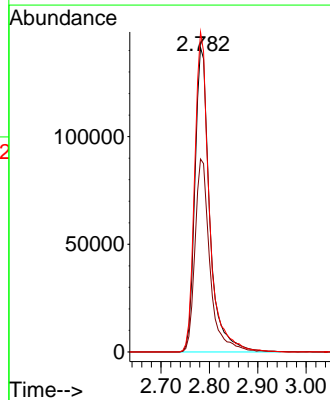
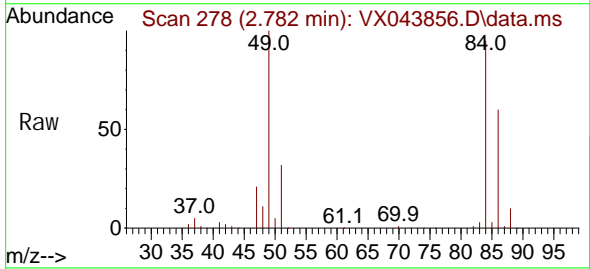


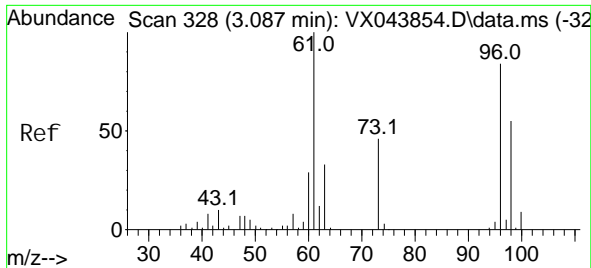
Tgt Ion: 43 Resp: 254266
Ion Ratio Lower Upper
43 100
74 28.0 23.4 35.2



#16
Methylene chloride
Concen: 198.460 ug/L
RT: 2.782 min Scan# 278
Delta R.T. -0.000 min
Lab File: VX043856.D
Acq: 14 Nov 2024 16:30

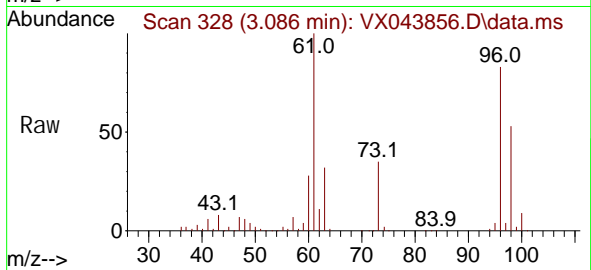
Tgt Ion: 84 Resp: 301324
Ion Ratio Lower Upper
84 100
86 63.4 44.4 82.5
49 105.1 73.4 136.2



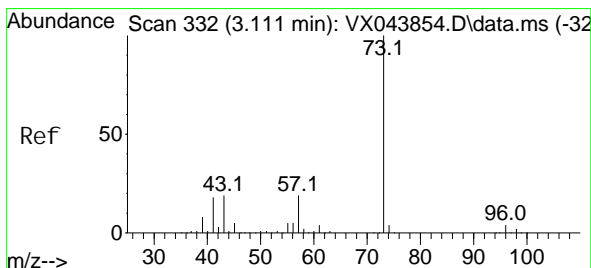
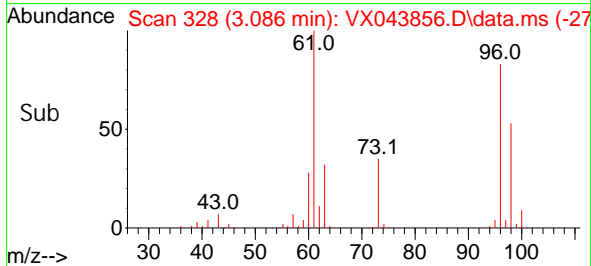
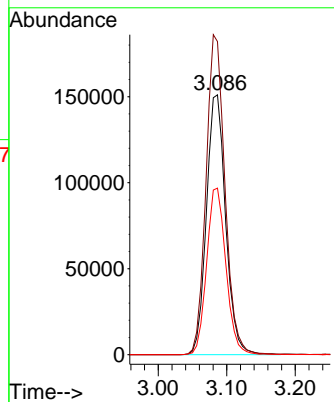


#17
 trans-1, 2-Di chloroethene
 Concen: 210.648 ug/L
 RT: 3.086 min Scan# 311
 Delta R.T. -0.000 min
 Lab File: VX043856.D
 Acq: 14 Nov 2024 16:30

Instrument : MSVOA_X
 ClientSampleId :

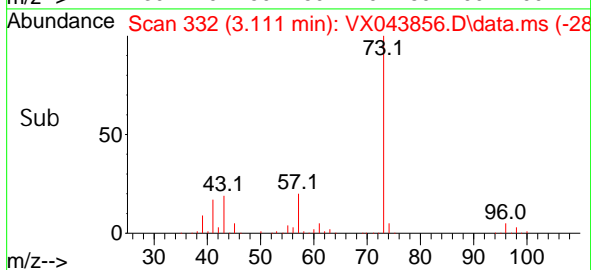
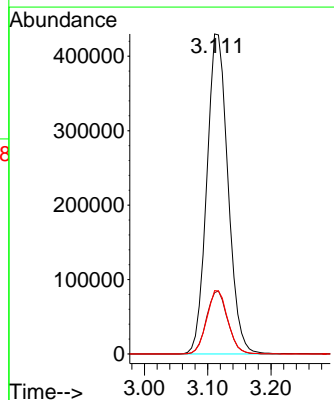
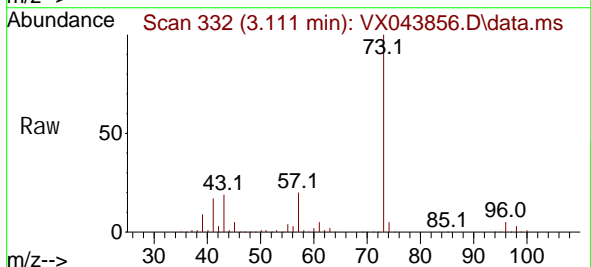


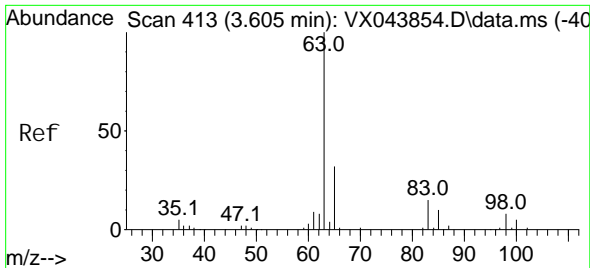
Tgt Ion: 96 Resp: 295144
 Ion Ratio Lower Upper
 96 100
 61 120.5 83.2 154.6
 98 64.1 45.4 84.4



#18
 Methyl tert-butyl Ether
 Concen: 204.723 ug/L
 RT: 3.111 min Scan# 332
 Delta R.T. -0.000 min
 Lab File: VX043856.D
 Acq: 14 Nov 2024 16:30

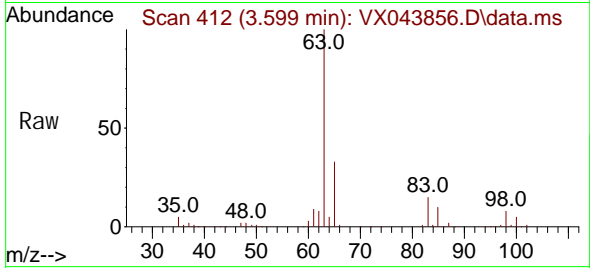
Tgt Ion: 73 Resp: 999881
 Ion Ratio Lower Upper
 73 100
 43 19.7 15.5 23.3
 57 19.7 15.1 22.7



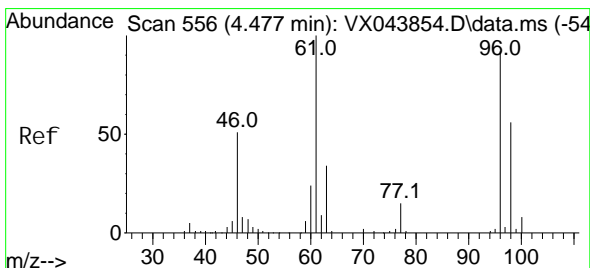
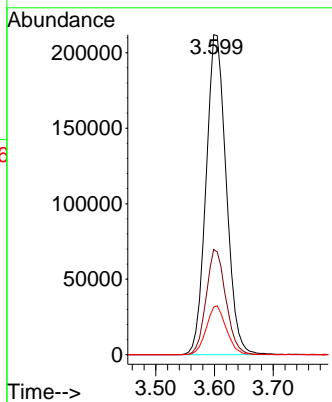
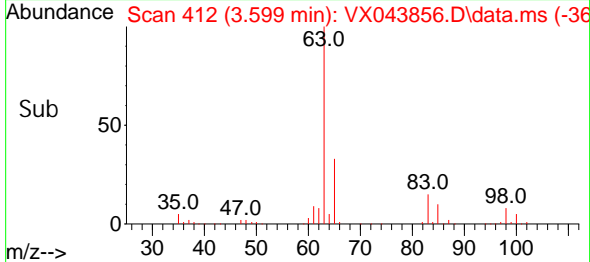


#19
 1,1-Dichloroethane
 Concen: 204.465 ug/L
 RT: 3.599 min Scan# 412
 Delta R.T. -0.006 min
 Lab File: VX043856.D
 Acq: 14 Nov 2024 16:30

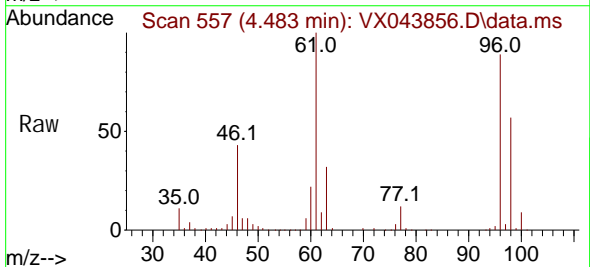
Instrument : MSVOA_X
 ClientSampleId :



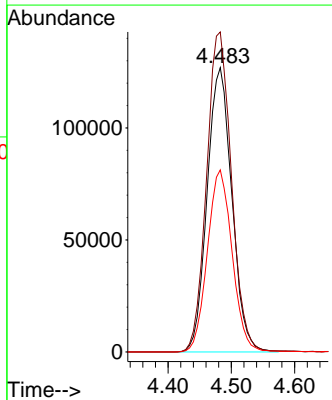
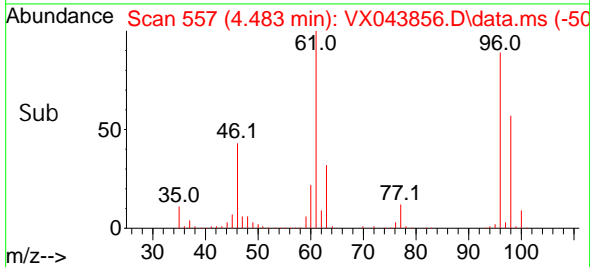
Tgt Ion: 63 Resp: 505125
 Ion Ratio Lower Upper
 63 100
 65 32.9 22.4 41.6
 83 14.9 10.4 19.2

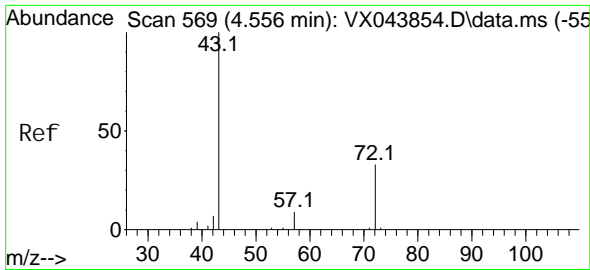


#20
 cis-1,2-Dichloroethene
 Concen: 205.056 ug/L
 RT: 4.483 min Scan# 557
 Delta R.T. 0.006 min
 Lab File: VX043856.D
 Acq: 14 Nov 2024 16:30



Tgt Ion: 96 Resp: 344781
 Ion Ratio Lower Upper
 96 100
 61 112.6 76.4 141.8
 98 64.1 42.6 79.0

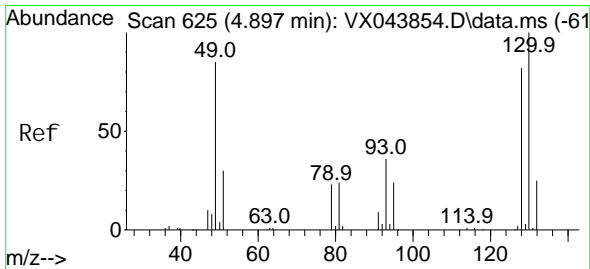
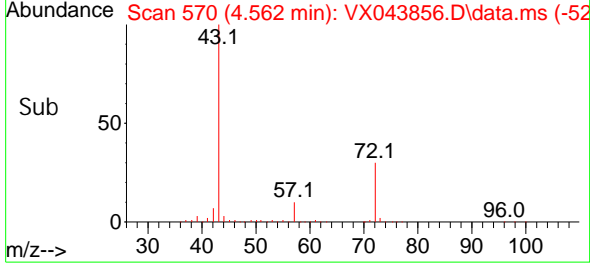
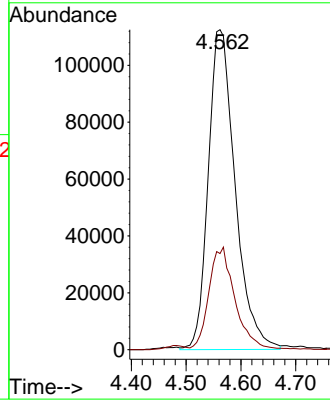
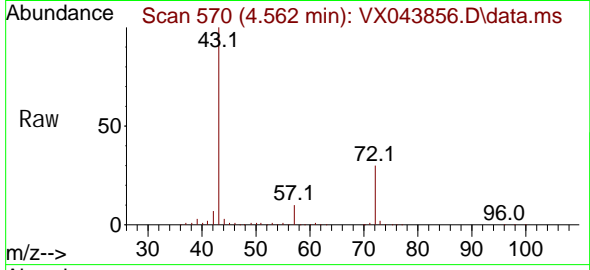




#22
 2-Butanone
 Concen: 379.766 ug/L
 RT: 4.562 min Scan# 51
 Delta R.T. 0.006 min
 Lab File: VX043856.D
 Acq: 14 Nov 2024 16:30

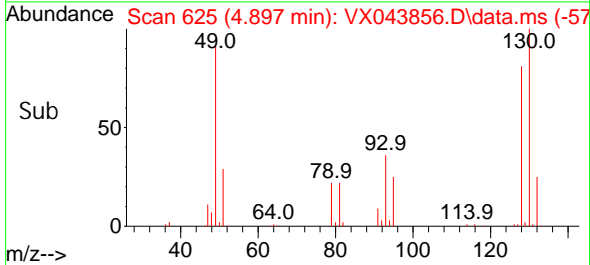
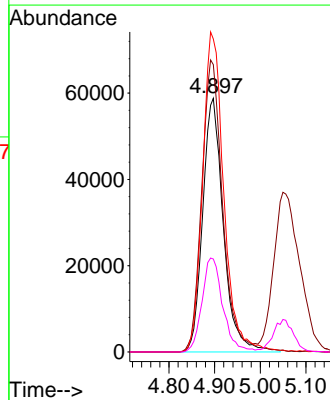
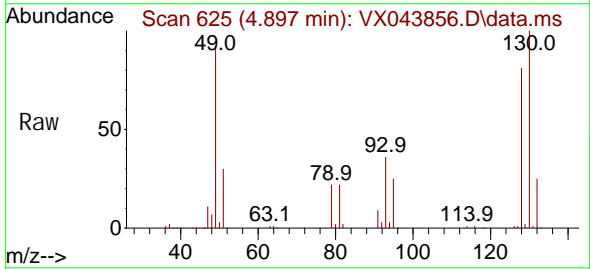
Instrument :
 MSVOA_X
 ClientSampleId :

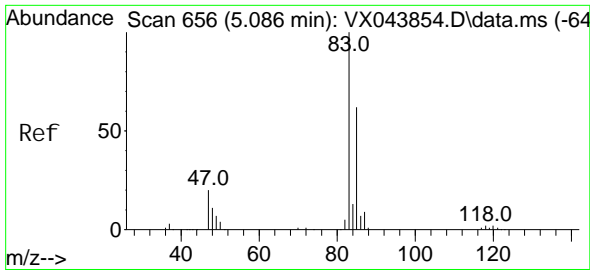
Tgt Ion: 43 Resp: 383037
 Ion Ratio Lower Upper
 43 100
 72 31.1 16.0 47.9



#23
 Bromochloromethane
 Concen: 204.972 ug/L
 RT: 4.897 min Scan# 625
 Delta R.T. -0.000 min
 Lab File: VX043856.D
 Acq: 14 Nov 2024 16:30

Tgt Ion: 128 Resp: 185212
 Ion Ratio Lower Upper
 128 100
 49 113.3 73.6 136.8
 130 123.4 85.7 159.1
 51 36.7 29.1 43.7

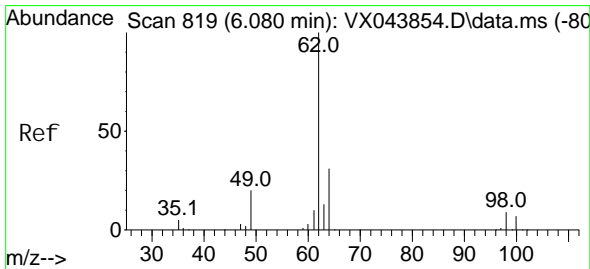
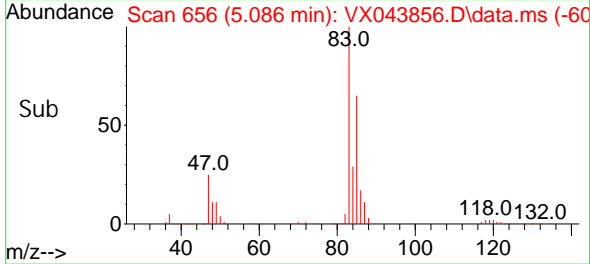
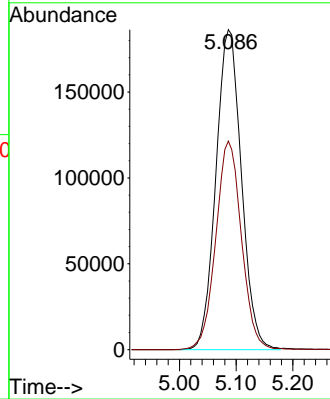
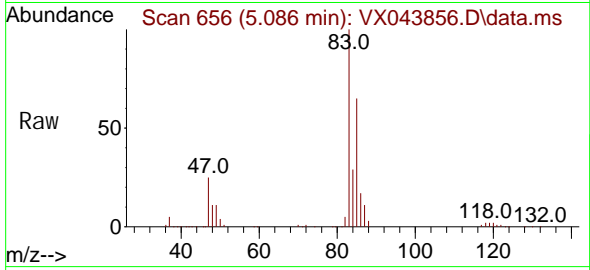




#25
 Chloroform
 Concen: 203.406 ug/L
 RT: 5.086 min Scan# 60
 Delta R.T. -0.000 min
 Lab File: VX043856.D
 Acq: 14 Nov 2024 16:30

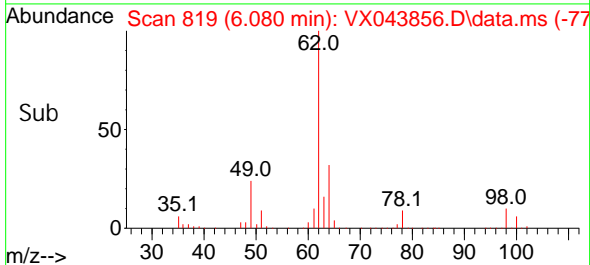
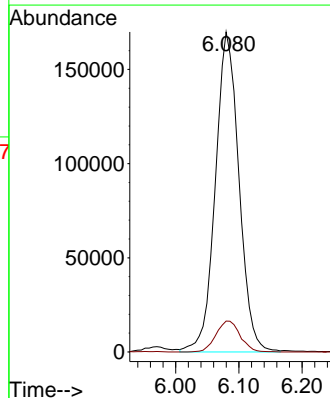
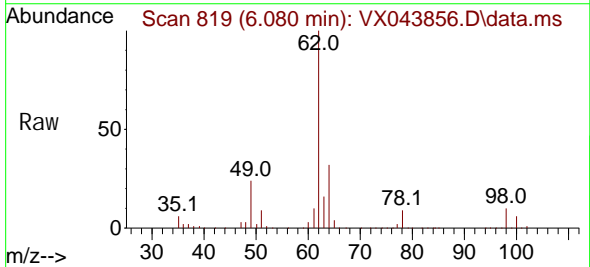
Instrument :
 MSVOA_X
 ClientSampleId :

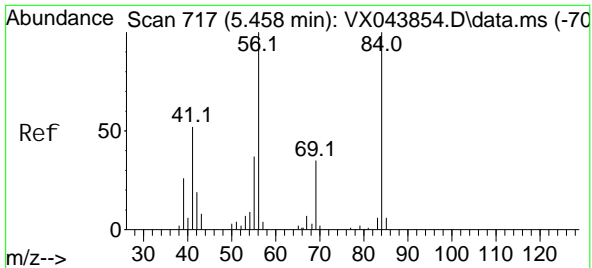
Tgt Ion: 83 Resp: 582237
 Ion Ratio Lower Upper
 83 100
 85 65.2 43.8 81.3



#27
 1,2-Dichloroethane
 Concen: 196.066 ug/L
 RT: 6.080 min Scan# 819
 Delta R.T. -0.000 min
 Lab File: VX043856.D
 Acq: 14 Nov 2024 16:30

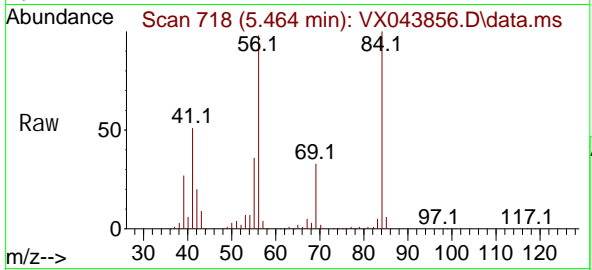
Tgt Ion: 62 Resp: 440033
 Ion Ratio Lower Upper
 62 100
 98 9.7 7.5 11.3





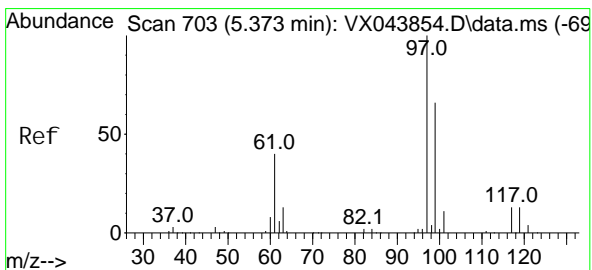
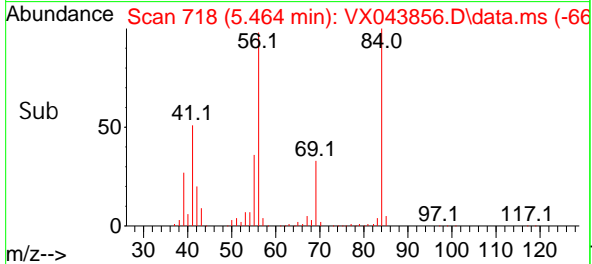
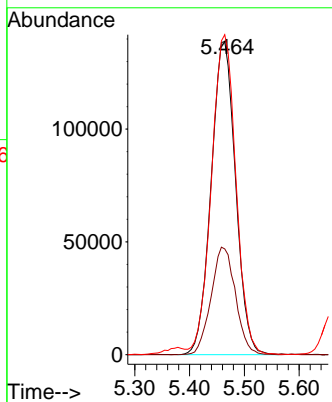
#29
 Cycl ohexane
 Concen: 201.313 ug/L
 RT: 5.464 min Scan# 718
 Delta R.T. 0.006 min
 Lab File: VX043856.D
 Acq: 14 Nov 2024 16:30

Instrument : MSVOA_X
 ClientSampleId :



Tgt Ion: 56 Resp: 430571

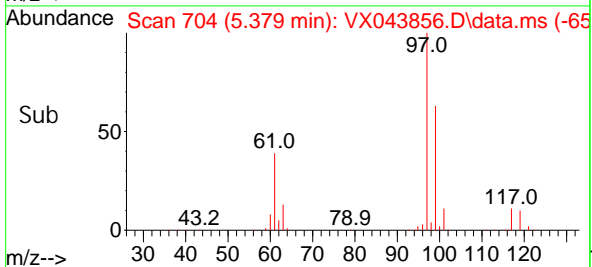
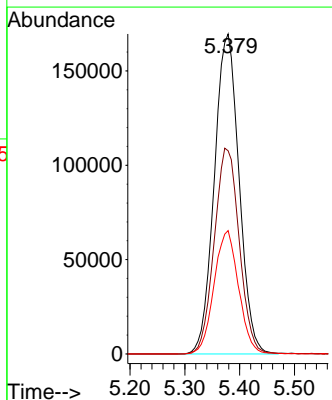
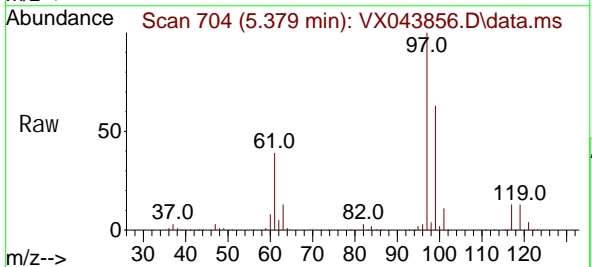
Ion	Ratio	Lower	Upper
56	100		
69	34.2	28.2	42.2
84	101.7	83.4	125.0

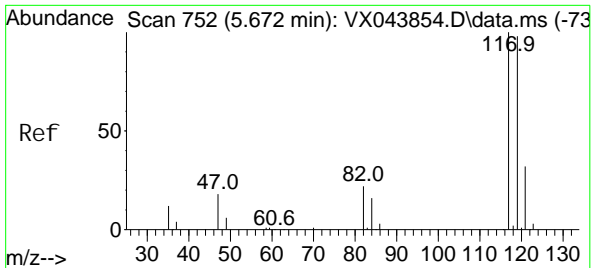


#30
 1,1,1-Trichloroethane
 Concen: 207.603 ug/L
 RT: 5.379 min Scan# 704
 Delta R.T. 0.006 min
 Lab File: VX043856.D
 Acq: 14 Nov 2024 16:30

Tgt Ion: 97 Resp: 532513

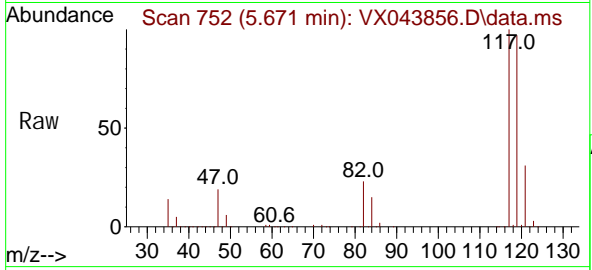
Ion	Ratio	Lower	Upper
97	100		
99	64.9	50.8	76.2
61	38.3	30.6	45.8



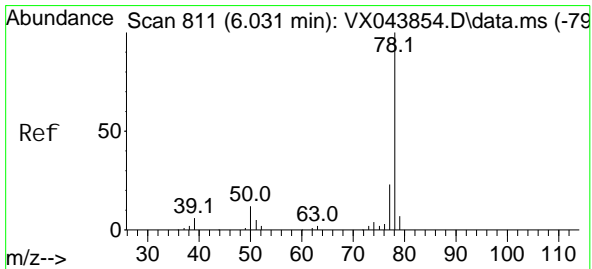
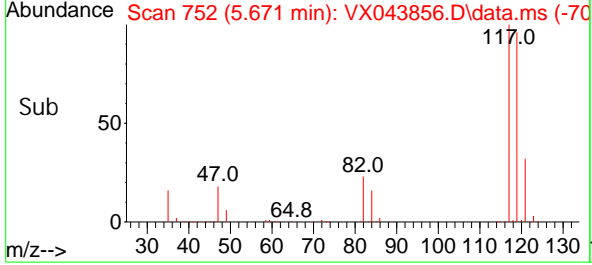
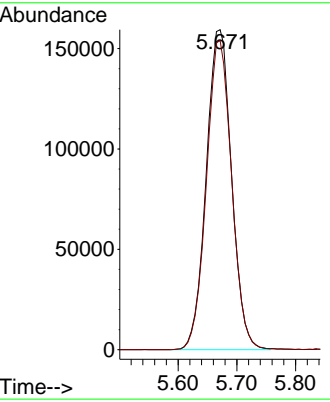


#31
 Carbon tetrachloride
 Concen: 215.641 ug/L
 RT: 5.671 min Scan# 752
 Delta R.T. -0.000 min
 Lab File: VX043856.D
 Acq: 14 Nov 2024 16:30

Instrument : MSVOA_X
 ClientSampleId :

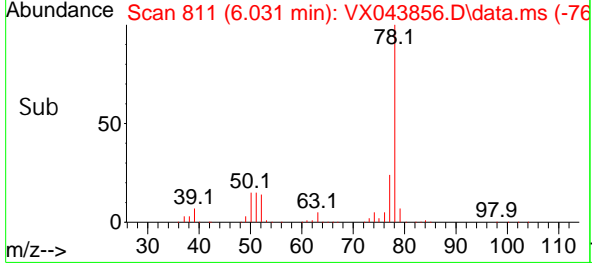
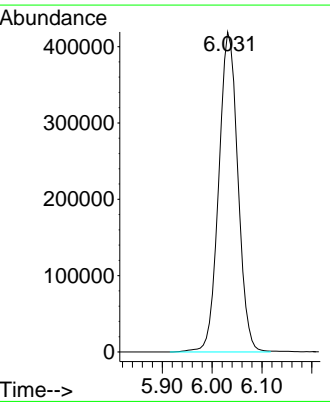
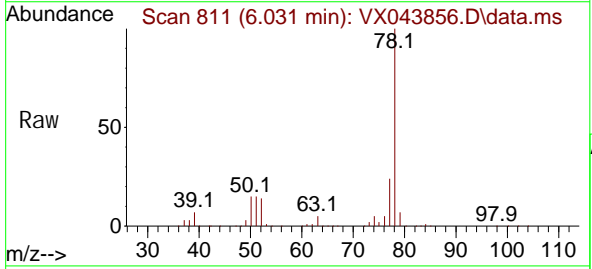


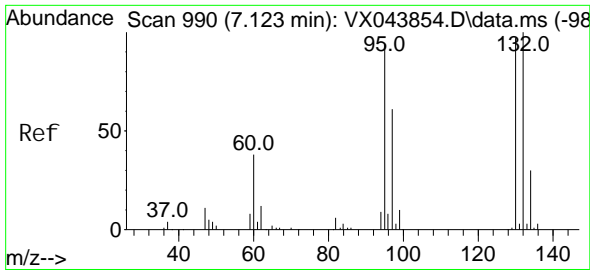
Tgt Ion: 117 Resp: 477297
 Ion Ratio Lower Upper
 117 100
 119 96.2 78.0 117.0



#33
 Benzene
 Concen: 199.097 ug/L
 RT: 6.031 min Scan# 811
 Delta R.T. -0.000 min
 Lab File: VX043856.D
 Acq: 14 Nov 2024 16:30

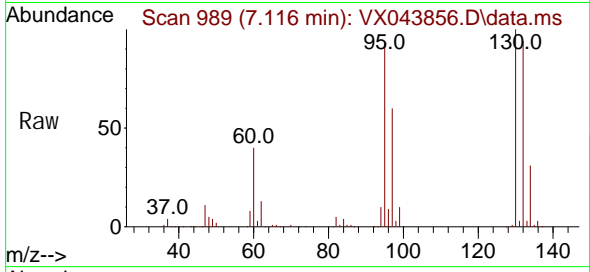
Tgt Ion: 78 Resp: 1117970



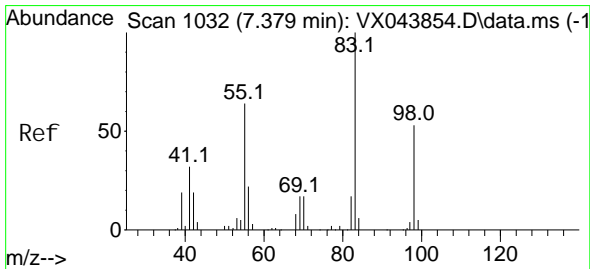
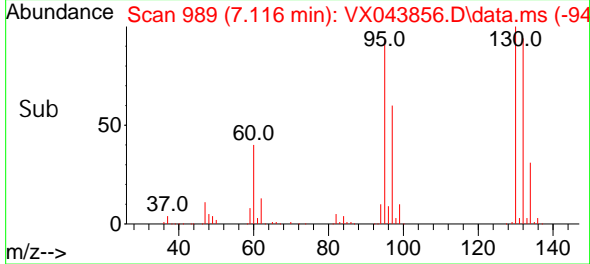
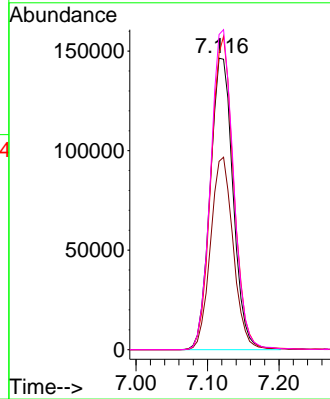


#34
 Trichloroethene
 Concen: 175.322 ug/L
 RT: 7.116 min Scan# 989
 Delta R.T. -0.006 min
 Lab File: VX043856.D
 Acq: 14 Nov 2024 16:30

Instrument : MSVOA_X
 ClientSampleId :

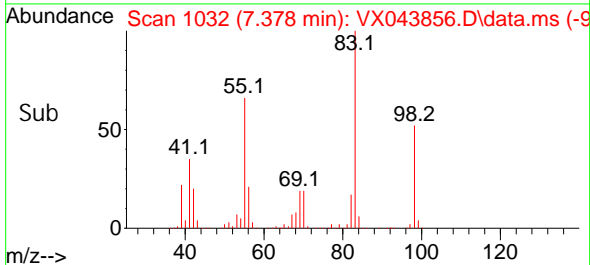
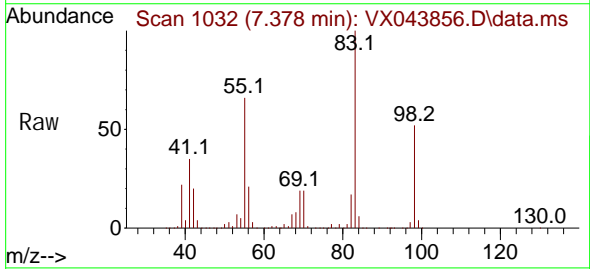
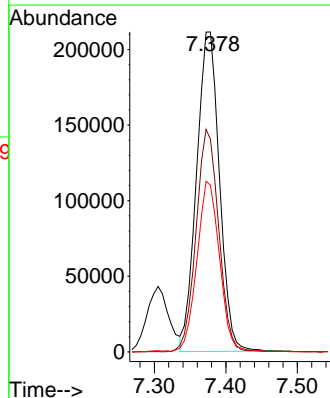


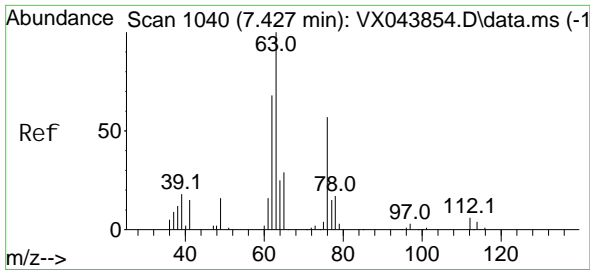
Tgt Ion: 95 Resp: 326786
 Ion Ratio Lower Upper
 95 100
 97 64.6 45.6 84.6
 132 101.7 74.4 138.2
 130 108.1 72.6 134.8



#35
 Methyl cycl ohexane
 Concen: 197.514 ug/L
 RT: 7.378 min Scan# 1032
 Delta R.T. -0.000 min
 Lab File: VX043856.D
 Acq: 14 Nov 2024 16:30

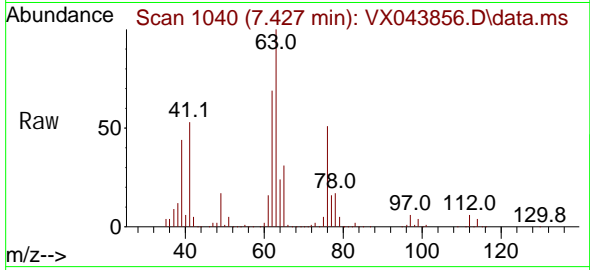
Tgt Ion: 83 Resp: 470530
 Ion Ratio Lower Upper
 83 100
 55 68.7 53.5 80.3
 98 52.5 43.0 64.6



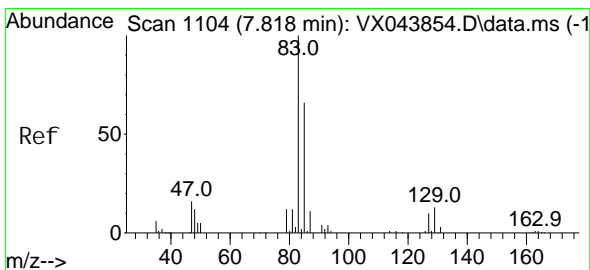
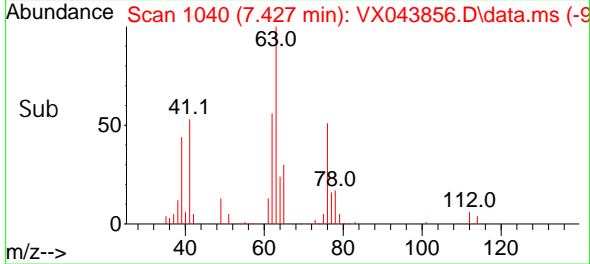
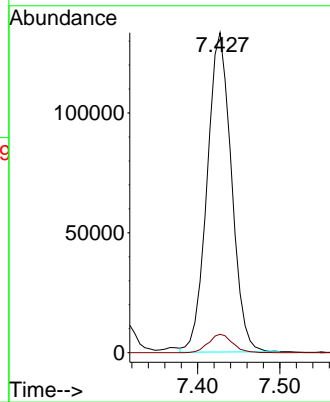


#37
 1, 2-Di chl oropropane
 Concen: 199.324 ug/L
 RT: 7.427 min Scan# 1040
 Delta R.T. -0.000 min
 Lab File: VX043856.D
 Acq: 14 Nov 2024 16: 30

Instrument : MSVOA_X
 ClientSampleId :

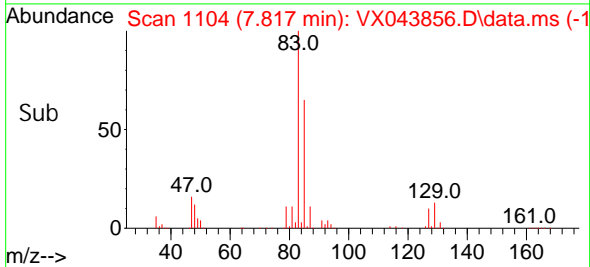
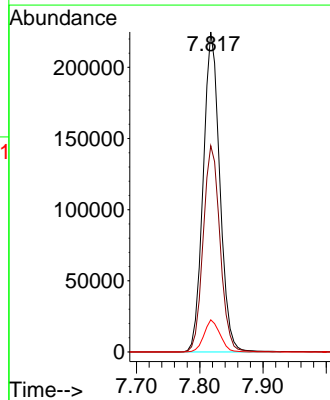
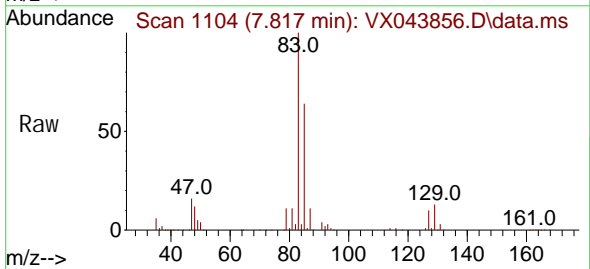


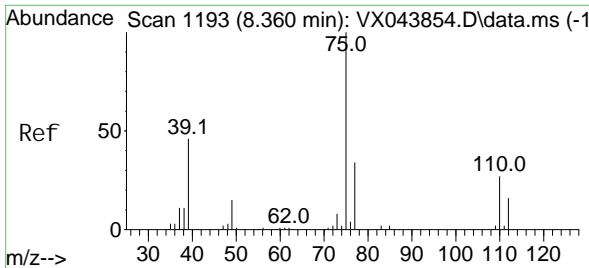
Tgt Ion: 63 Resp: 273079
 Ion Ratio Lower Upper
 63 100
 112 5.7 4.6 7.0



#38
 Bromodi chl oromethane
 Concen: 215.884 ug/L
 RT: 7.817 min Scan# 1104
 Delta R.T. -0.000 min
 Lab File: VX043856.D
 Acq: 14 Nov 2024 16: 30

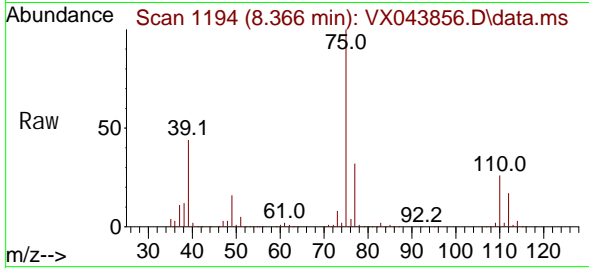
Tgt Ion: 83 Resp: 410274
 Ion Ratio Lower Upper
 83 100
 85 64.4 46.5 86.3
 127 10.0 8.1 12.1



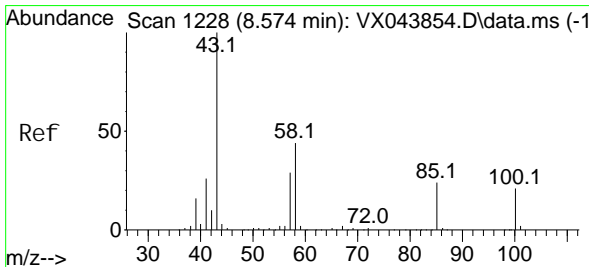
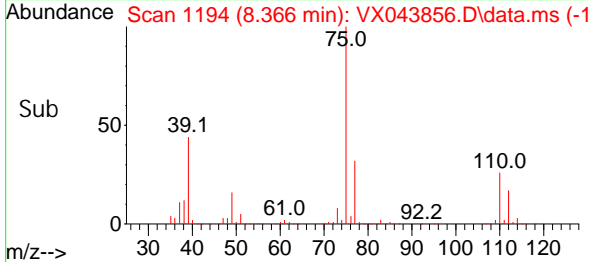
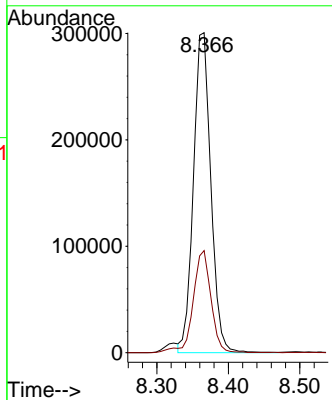


#39
 cis-1,3-Dichloropropene
 Concen: 219.000 ug/L
 RT: 8.366 min Scan# 1194
 Delta R.T. 0.006 min
 Lab File: VX043856.D
 Acq: 14 Nov 2024 16:30

Instrument : MSVOA_X
 ClientSampleId :

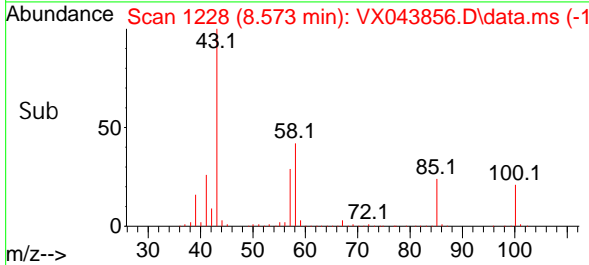
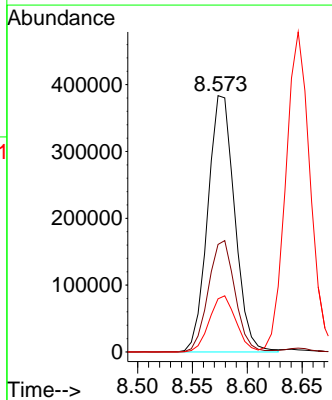
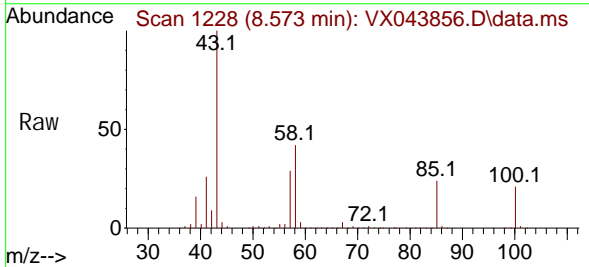


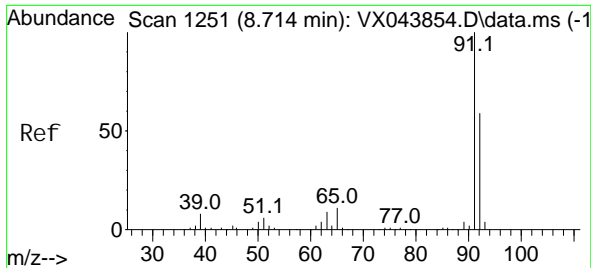
Tgt Ion: 75 Resp: 507913
 Ion Ratio Lower Upper
 75 100
 77 31.9 23.7 44.1



#40
 4-Methyl-2-pentanone
 Concen: 401.990 ug/L
 RT: 8.573 min Scan# 1228
 Delta R.T. -0.000 min
 Lab File: VX043856.D
 Acq: 14 Nov 2024 16:30

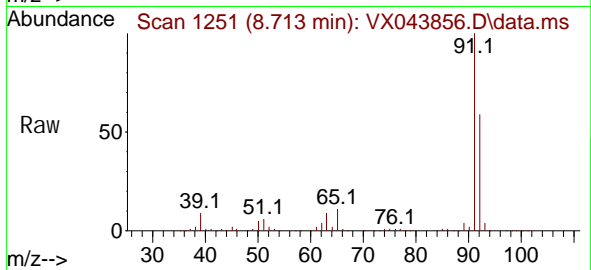
Tgt Ion: 43 Resp: 656920
 Ion Ratio Lower Upper
 43 100
 58 42.9 34.0 51.0
 100 21.5 17.2 25.8



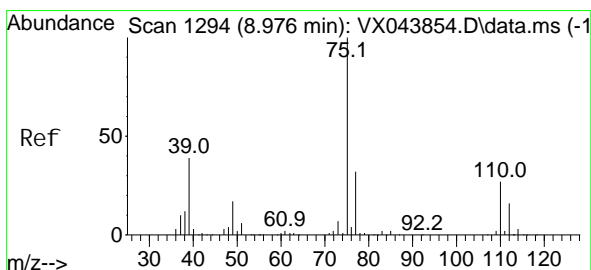
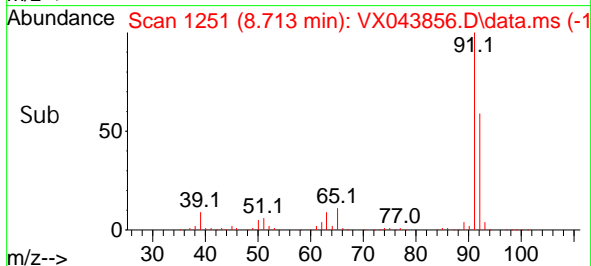
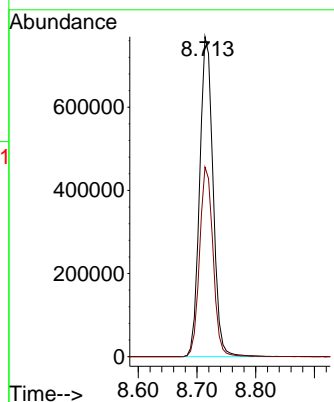


#42
 Tol uene
 Concen: 199.411 ug/L
 RT: 8.713 min Scan# 1251
 Delta R.T. -0.000 min
 Lab File: VX043856.D
 Acq: 14 Nov 2024 16:30

Instrument : MSVOA_X
 ClientSampleId :

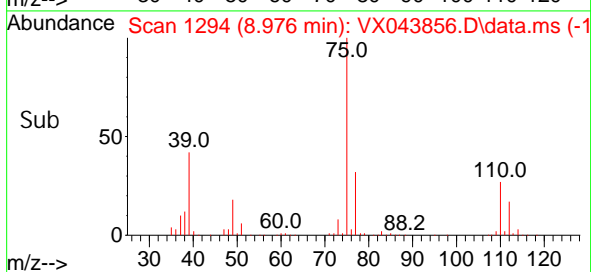
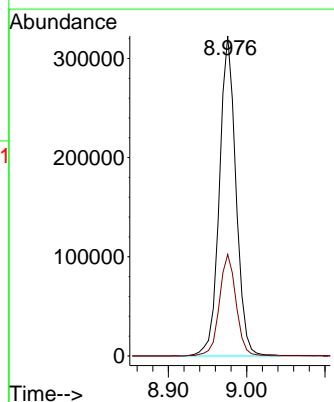
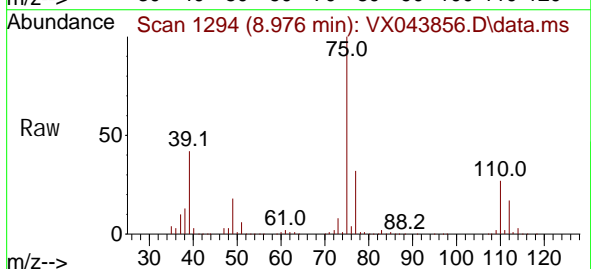


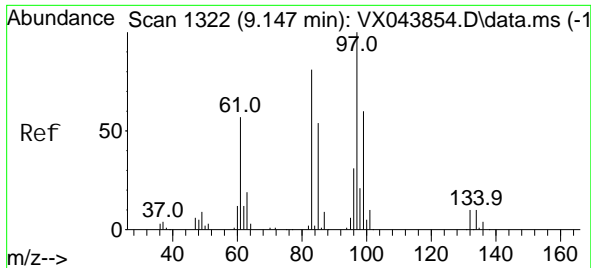
Tgt Ion: 91 Resp: 1221939
 Ion Ratio Lower Upper
 91 100
 92 59.3 41.3 76.7



#44
 trans-1, 3-Di chl oroprene
 Concen: 220.660 ug/L
 RT: 8.976 min Scan# 1294
 Delta R.T. -0.000 min
 Lab File: VX043856.D
 Acq: 14 Nov 2024 16:30

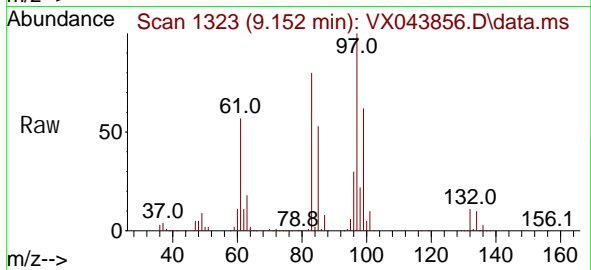
Tgt Ion: 75 Resp: 474682
 Ion Ratio Lower Upper
 75 100
 77 31.7 22.5 41.7





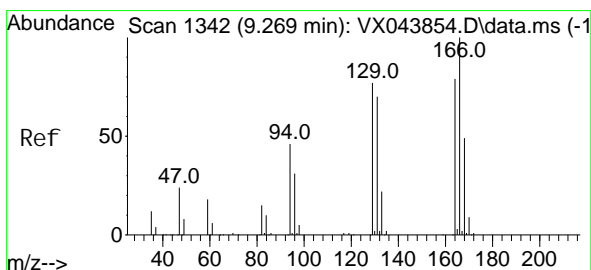
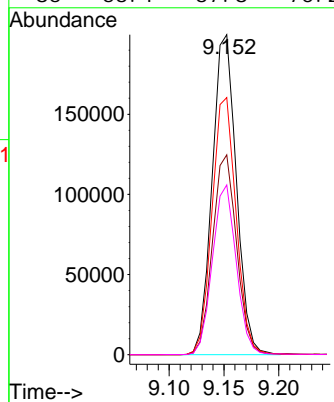
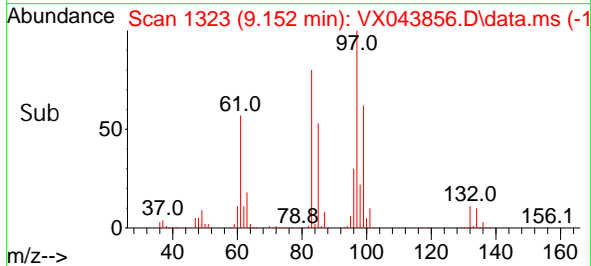
#45
 1,1,2-Tri chloroethane
 Concen: 193.819 ug/L
 RT: 9.152 min Scan# 1323
 Delta R.T. 0.006 min
 Lab File: VX043856.D
 Acq: 14 Nov 2024 16:30

Instrument : MSVOA_X
 ClientSampleId :

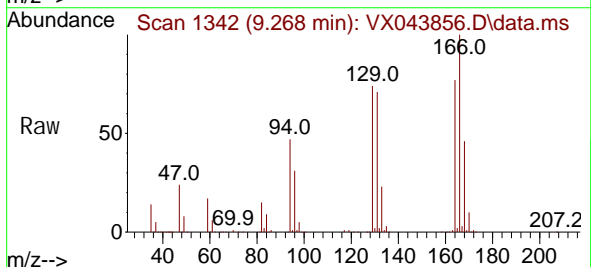


Tgt Ion: 97 Resp: 305983

Ion	Ratio	Lower	Upper
97	100		
99	62.4	42.1	78.1
83	80.4	56.9	105.7
85	53.1	37.8	70.2

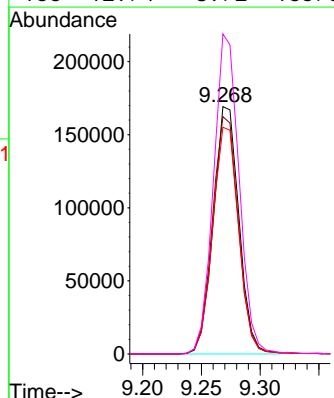
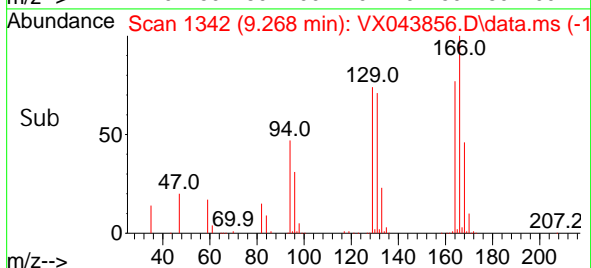


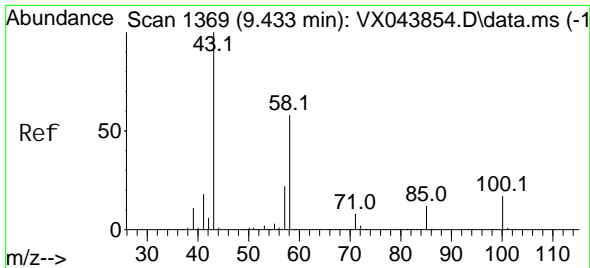
#46
 Tetrachloroethene
 Concen: 190.629 ug/L
 RT: 9.268 min Scan# 1342
 Delta R.T. -0.000 min
 Lab File: VX043856.D
 Acq: 14 Nov 2024 16:30



Tgt Ion: 164 Resp: 255587

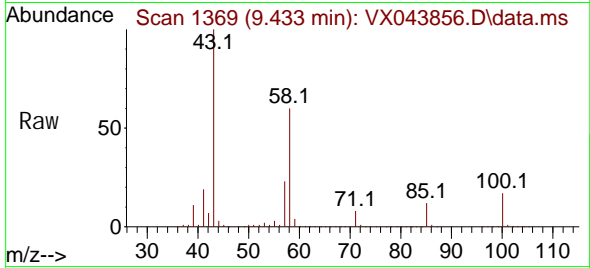
Ion	Ratio	Lower	Upper
164	100		
129	96.0	68.9	127.9
131	91.7	62.6	116.2
166	129.4	89.2	165.6



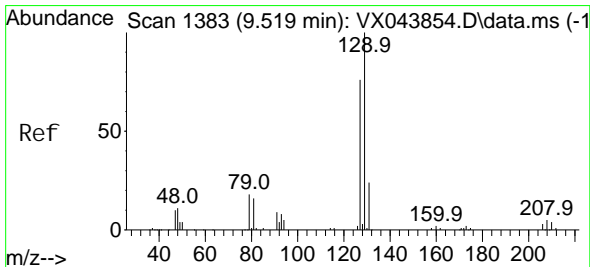
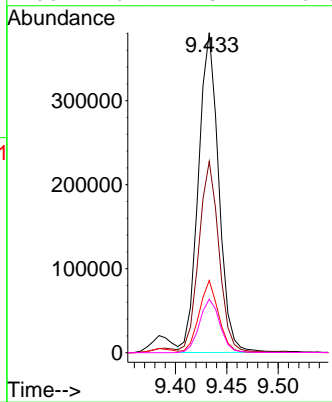
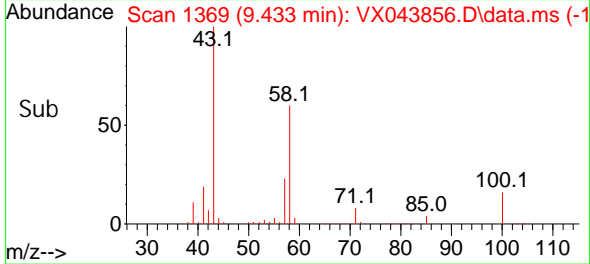


#48
 2-Hexanone
 Concen: 394.959 ug/L
 RT: 9.433 min Scan# 1369
 Delta R.T. -0.000 min
 Lab File: VX043856.D
 Acq: 14 Nov 2024 16:30

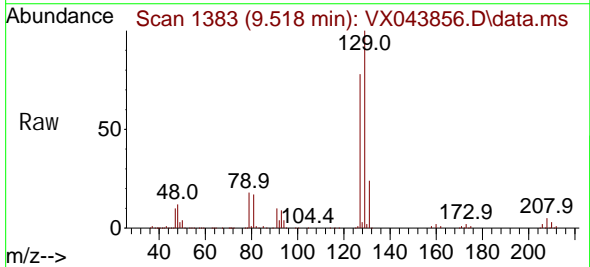
Instrument : MSVOA_X
 ClientSampleId :



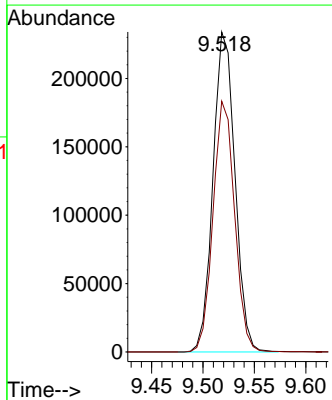
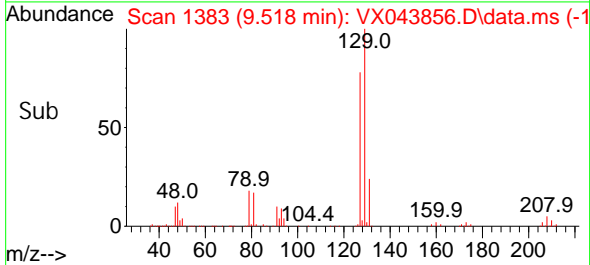
Tgt Ion: 43 Resp: 524874
 Ion Ratio Lower Upper
 43 100
 58 59.1 47.8 71.6
 57 21.8 16.6 24.8
 100 16.9 13.7 20.5

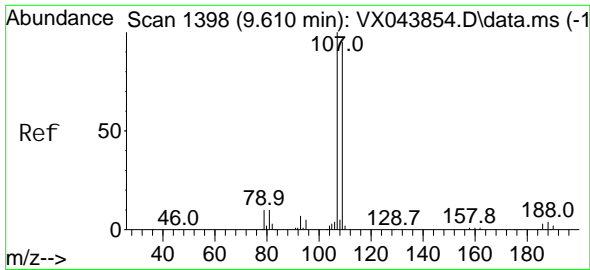


#49
 Di bromochloromethane
 Concen: 223.194 ug/L
 RT: 9.518 min Scan# 1383
 Delta R.T. -0.000 min
 Lab File: VX043856.D
 Acq: 14 Nov 2024 16:30



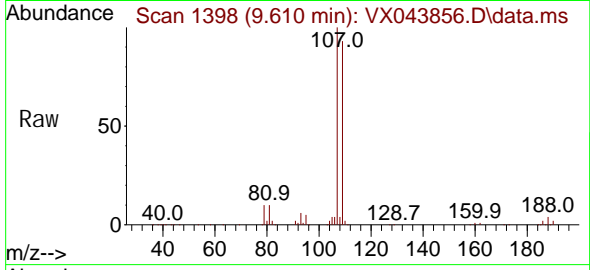
Tgt Ion: 129 Resp: 346537
 Ion Ratio Lower Upper
 129 100
 127 78.4 53.3 99.1



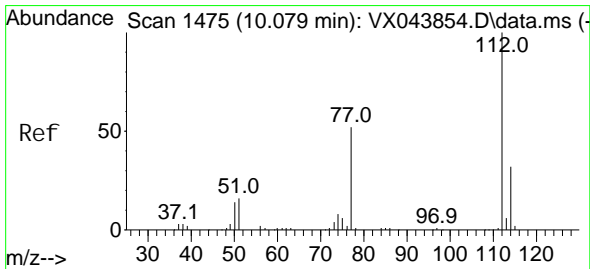
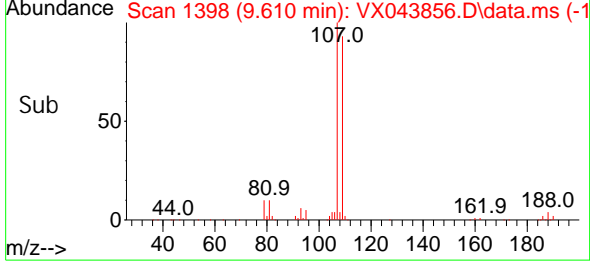
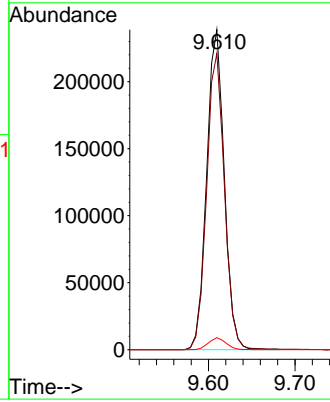


#50
 1, 2-Di bromoethane
 Concen: 198.684 ug/L
 RT: 9.610 min Scan# 1398
 Delta R.T. -0.000 min
 Lab File: VX043856.D
 Acq: 14 Nov 2024 16:30

Instrument : MSVOA_X
 ClientSampleId :

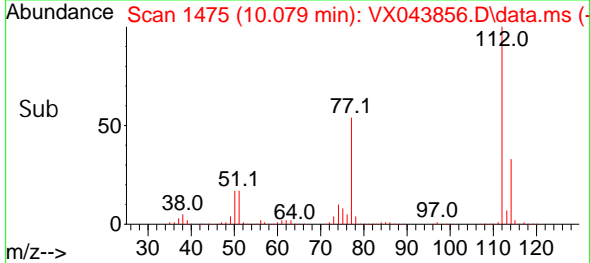
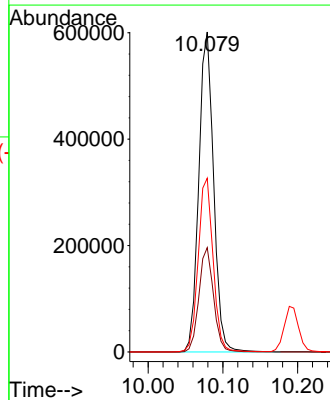
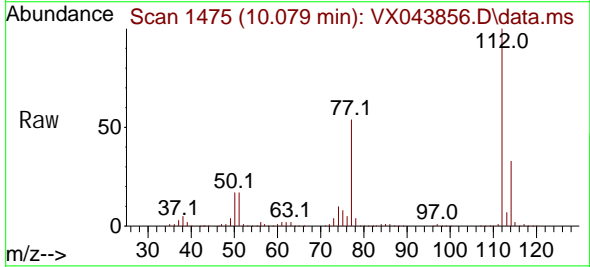


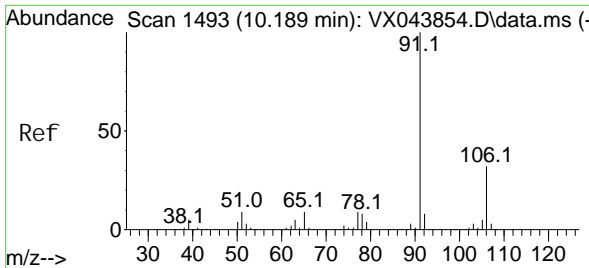
Tgt Ion: 107 Resp: 337230
 Ion Ratio Lower Upper
 107 100
 109 92.6 66.6 123.8
 188 3.8 3.4 5.0



#51
 Chlorobenzene
 Concen: 197.120 ug/L
 RT: 10.079 min Scan# 1475
 Delta R.T. -0.000 min
 Lab File: VX043856.D
 Acq: 14 Nov 2024 16:30

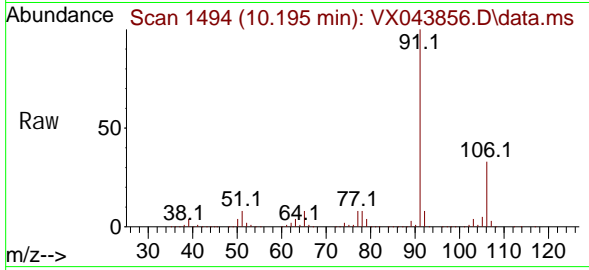
Tgt Ion: 112 Resp: 825234
 Ion Ratio Lower Upper
 112 100
 114 32.6 22.2 41.2
 77 54.3 42.4 63.6



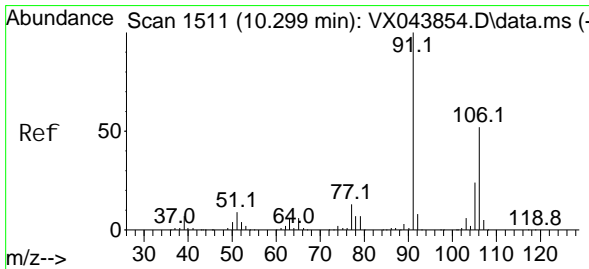
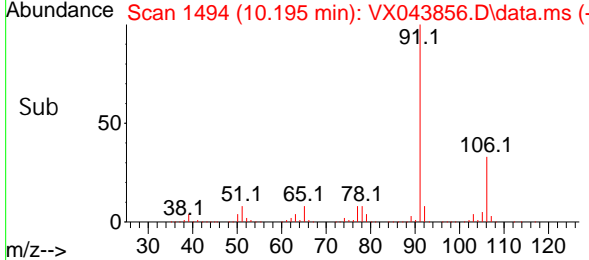
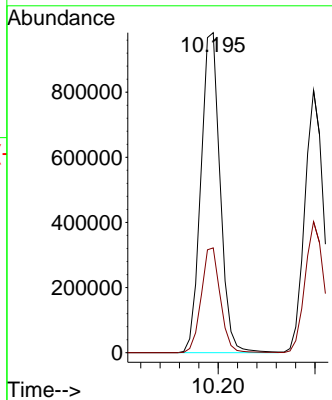


#52
 Ethyl benzene
 Concen: 202.940 ug/L
 RT: 10.195 min Scan# 1494
 Delta R.T. 0.006 min
 Lab File: VX043856.D
 Acq: 14 Nov 2024 16:30

Instrument : MSVOA_X
 ClientSampleId :

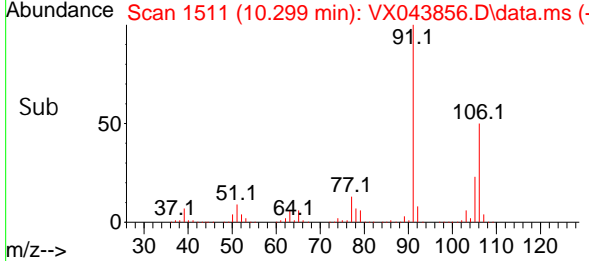
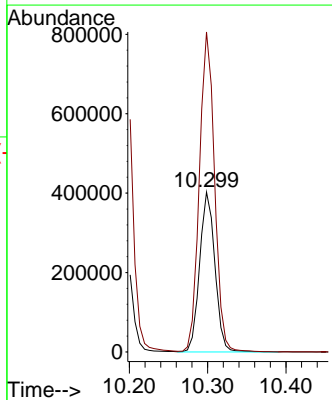
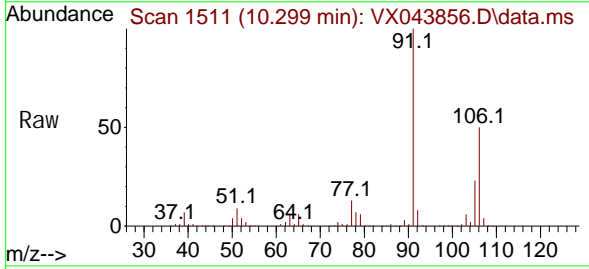


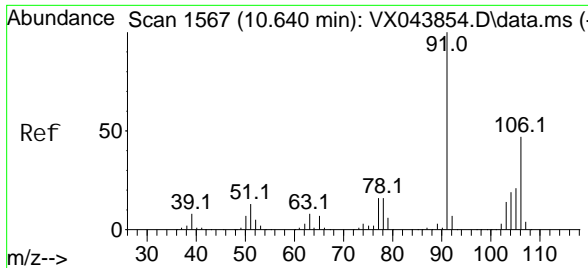
Tgt Ion: 91 Resp: 1360431
 Ion Ratio Lower Upper
 91 100
 106 32.8 22.7 42.3



#53
 m, p-Xylene
 Concen: 201.976 ug/L
 RT: 10.299 min Scan# 1511
 Delta R.T. -0.000 min
 Lab File: VX043856.D
 Acq: 14 Nov 2024 16:30

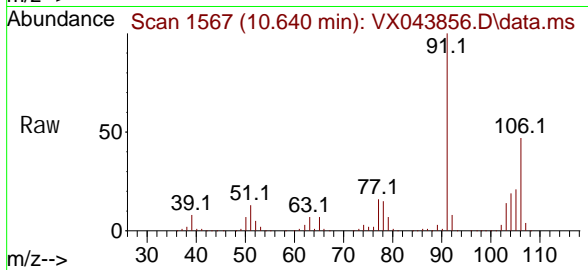
Tgt Ion: 106 Resp: 544304
 Ion Ratio Lower Upper
 106 100
 91 200.2 134.3 249.5



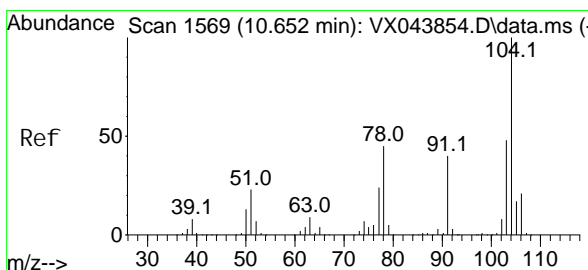
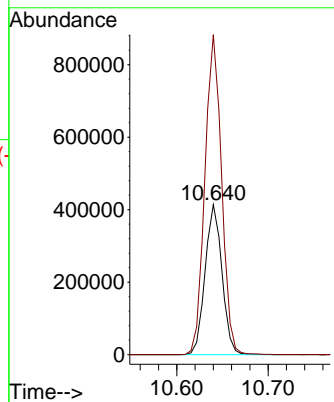
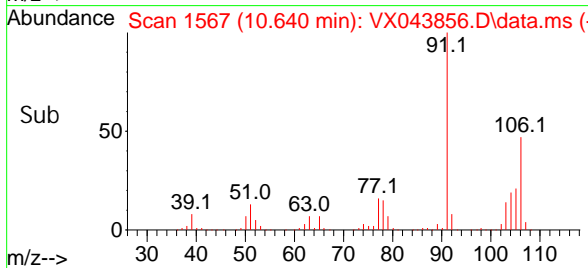


#54
 o-Xyl ene
 Concen: 197.714 ug/L
 RT: 10.640 min Scan# 1567
 Delta R.T. -0.000 min
 Lab File: VX043856.D
 Acq: 14 Nov 2024 16:30

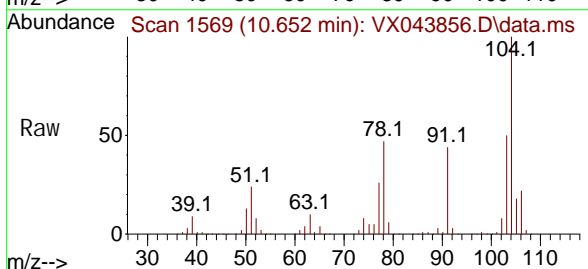
Instrument : MSVOA_X
 ClientSampleId :



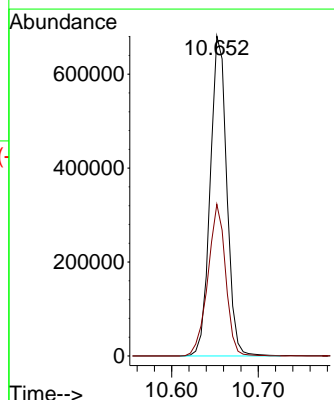
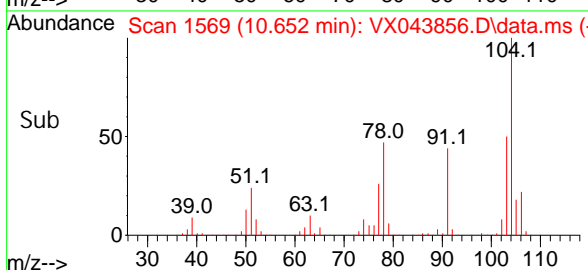
Tgt Ion: 106 Resp: 530484
 Ion Ratio Lower Upper
 106 100
 91 213.1 149.7 277.9

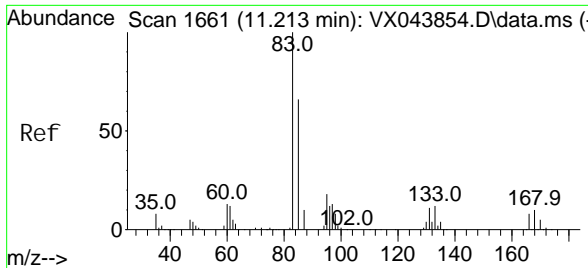


#55
 Styrene
 Concen: 207.308 ug/L
 RT: 10.652 min Scan# 1569
 Delta R.T. -0.000 min
 Lab File: VX043856.D
 Acq: 14 Nov 2024 16:30



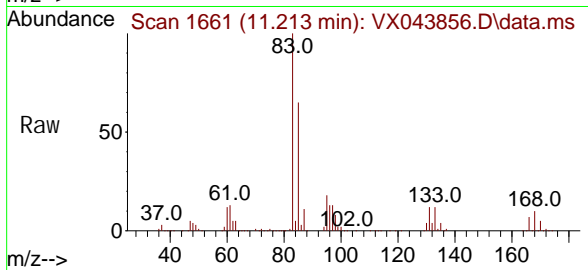
Tgt Ion: 104 Resp: 905326
 Ion Ratio Lower Upper
 104 100
 78 47.4 31.6 58.6



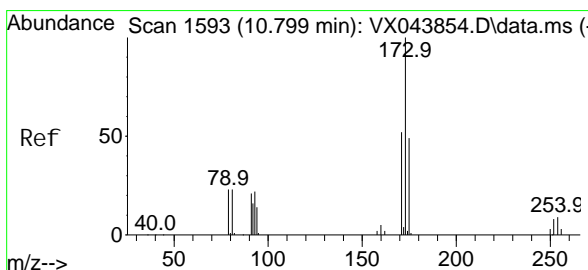
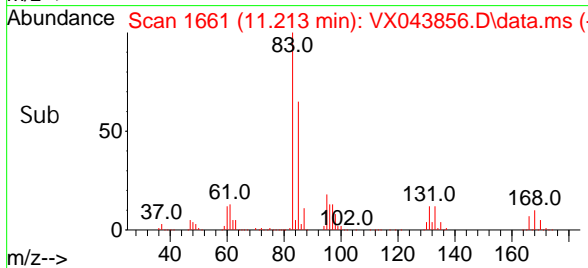
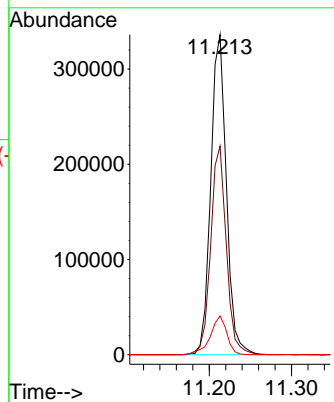


#57
 1, 1, 2-Tetrachloroethane
 Concen: 194.387 ug/L
 RT: 11.213 min Scan# 1661
 Delta R.T. -0.000 min
 Lab File: VX043856.D
 Acq: 14 Nov 2024 16:30

Instrument : MSVOA_X
 ClientSampleId :

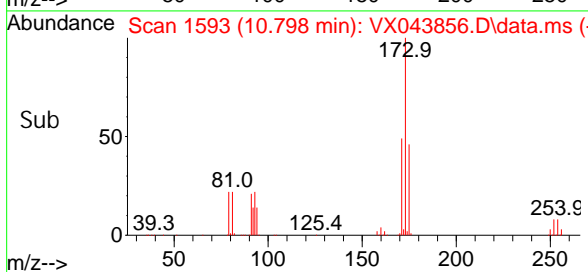
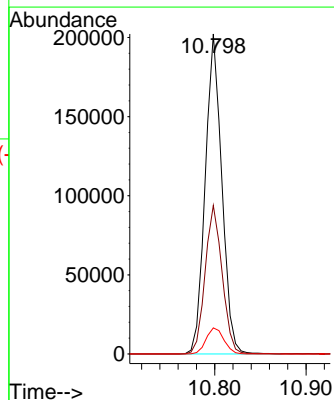
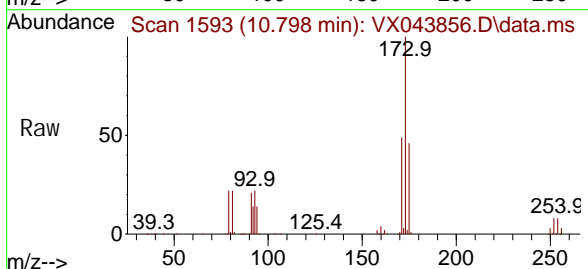


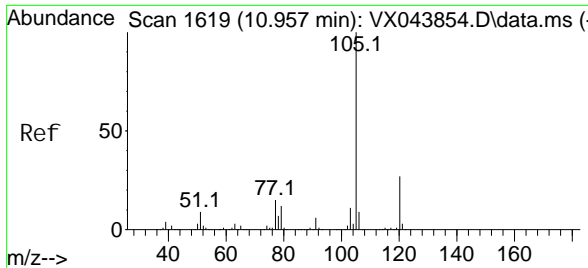
Tgt Ion: 83 Resp: 442603
 Ion Ratio Lower Upper
 83 100
 85 65.2 46.2 85.8
 131 12.1 9.2 13.8



#59
 Bromoform
 Concen: 230.451 ug/L
 RT: 10.798 min Scan# 1593
 Delta R.T. -0.000 min
 Lab File: VX043856.D
 Acq: 14 Nov 2024 16:30

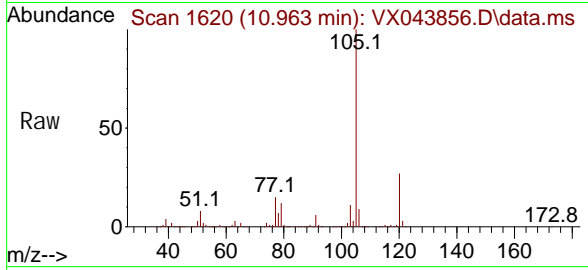
Tgt Ion: 173 Resp: 254385
 Ion Ratio Lower Upper
 173 100
 175 47.6 40.0 60.0
 254 8.7 7.0 10.4





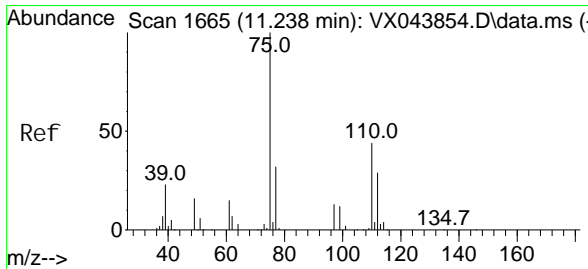
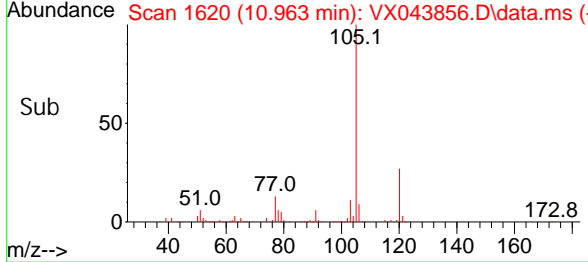
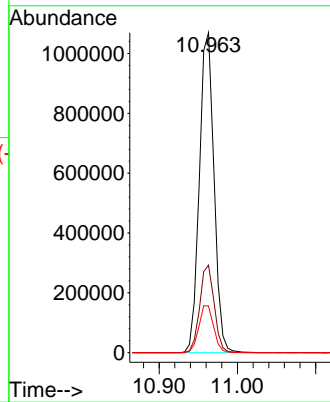
#60
 Isopropyl benzene
 Concen: 194.241 ug/L
 RT: 10.963 min Scan# 1619
 Delta R.T. 0.006 min
 Lab File: VX043856.D
 Acq: 14 Nov 2024 16:30

Instrument : MSVOA_X
 ClientSampleId :



Tgt Ion: 105 Resp: 1392700

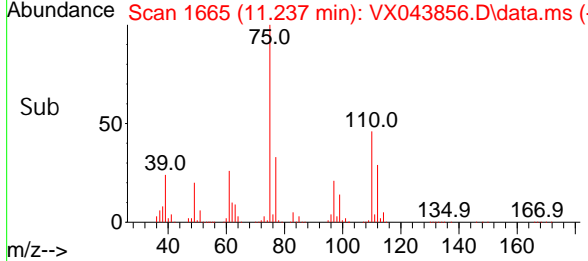
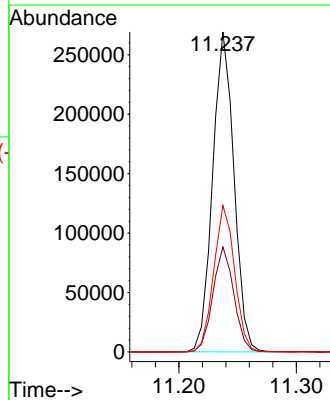
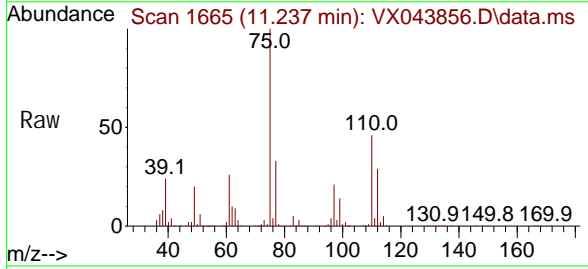
Ion	Ratio	Lower	Upper
105	100		
120	27.1	22.4	33.6
77	14.9	11.7	17.5

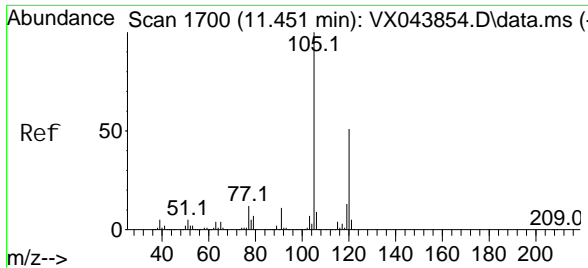


#61
 1,2,3-Trichloropropane
 Concen: 186.314 ug/L
 RT: 11.237 min Scan# 1665
 Delta R.T. -0.000 min
 Lab File: VX043856.D
 Acq: 14 Nov 2024 16:30

Tgt Ion: 75 Resp: 338765

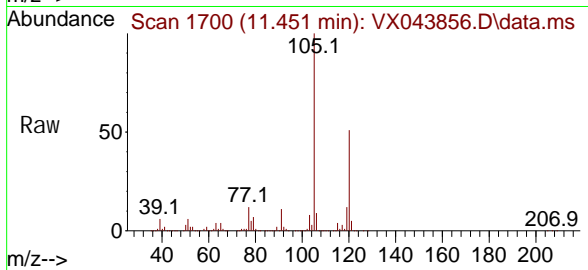
Ion	Ratio	Lower	Upper
75	100		
77	32.2	25.7	38.5
110	45.1	37.0	55.6



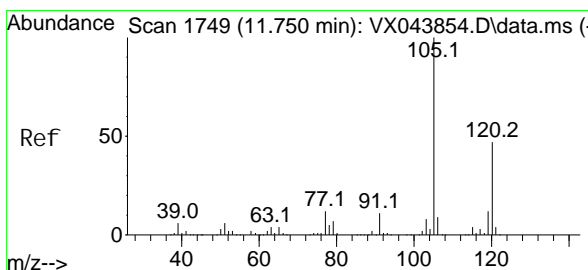
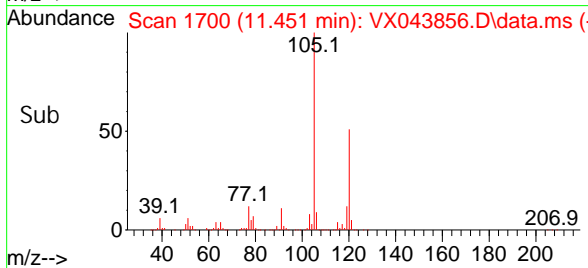
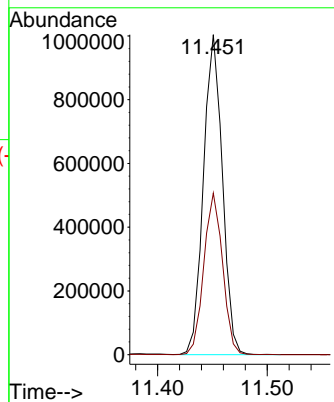


#62
 1, 3, 5-Tri methyl benzene
 Concen: 198.826 ug/L
 RT: 11.451 min Scan# 1700
 Delta R.T. -0.000 min
 Lab File: VX043856.D
 Acq: 14 Nov 2024 16:30

Instrument : MSVOA_X
 ClientSampleId :

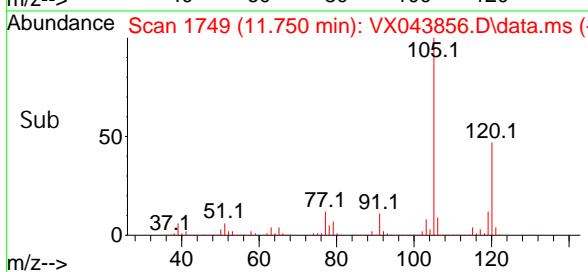
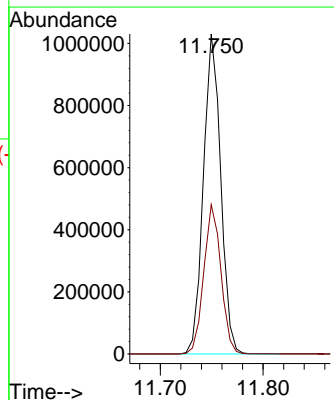
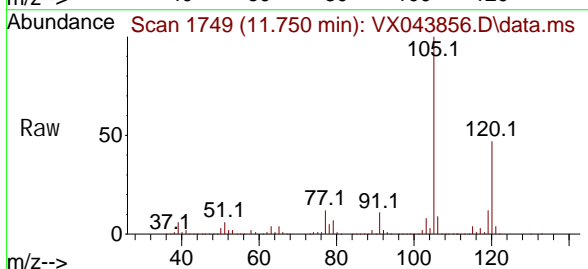


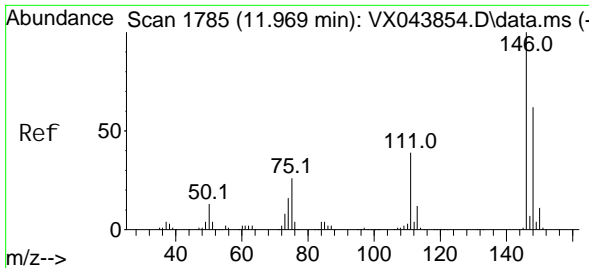
Tgt Ion: 105 Resp: 1200490
 Ion Ratio Lower Upper
 105 100
 120 50.1 39.6 59.4



#63
 1, 2, 4-Tri methyl benzene
 Concen: 200.836 ug/L
 RT: 11.750 min Scan# 1749
 Delta R.T. -0.000 min
 Lab File: VX043856.D
 Acq: 14 Nov 2024 16:30

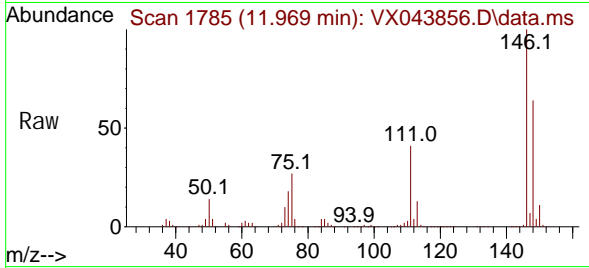
Tgt Ion: 105 Resp: 1207170
 Ion Ratio Lower Upper
 105 100
 120 46.3 37.6 56.4



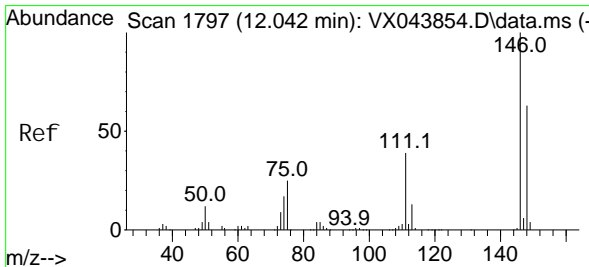
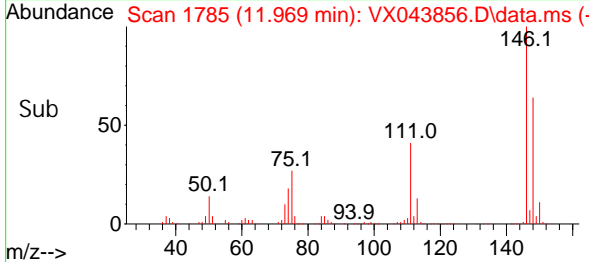
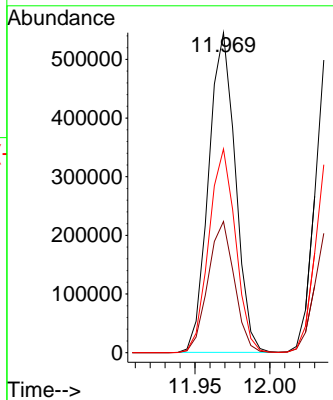


#64
 1,3-Di chl orobenzene
 Concen: 199.194 ug/L
 RT: 11.969 min Scan# 1785
 Delta R.T. -0.000 min
 Lab File: VX043856.D
 Acq: 14 Nov 2024 16:30

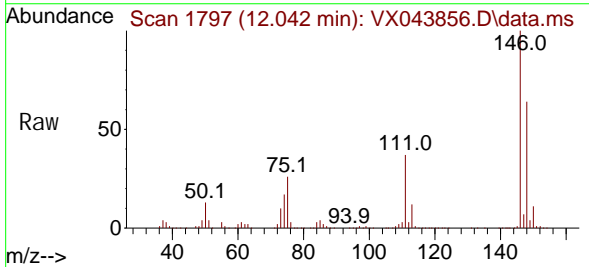
Instrument : MSVOA_X
 ClientSampleId :



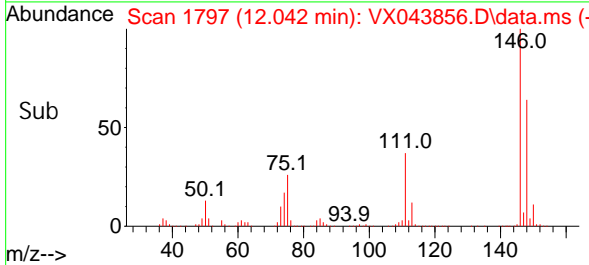
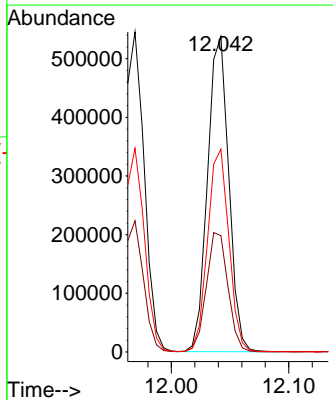
Tgt Ion: 146 Resp: 678506
 Ion Ratio Lower Upper
 146 100
 111 41.0 27.2 50.4
 148 63.6 43.5 80.7

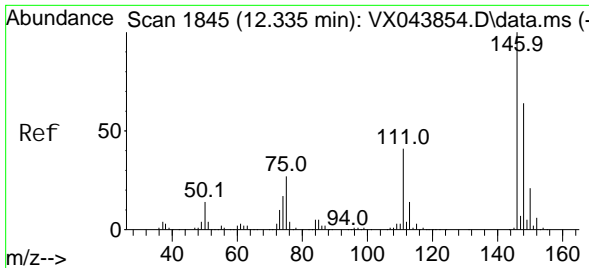


#65
 1,4-Di chl orobenzene
 Concen: 198.476 ug/L
 RT: 12.042 min Scan# 1797
 Delta R.T. -0.000 min
 Lab File: VX043856.D
 Acq: 14 Nov 2024 16:30



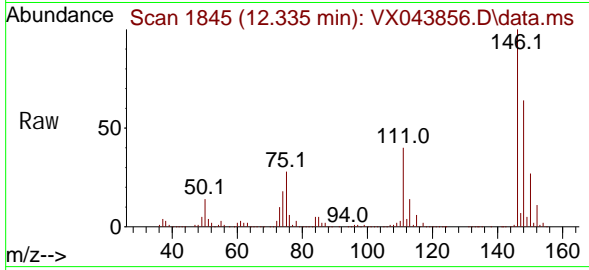
Tgt Ion: 146 Resp: 675228
 Ion Ratio Lower Upper
 146 100
 111 36.9 27.5 51.1
 148 64.3 44.0 81.8





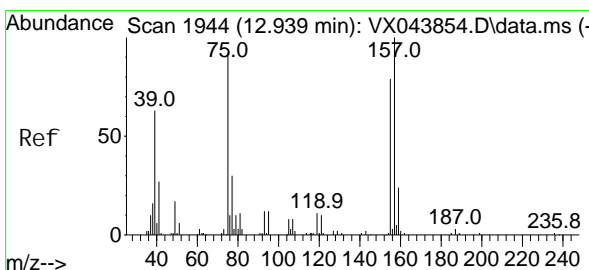
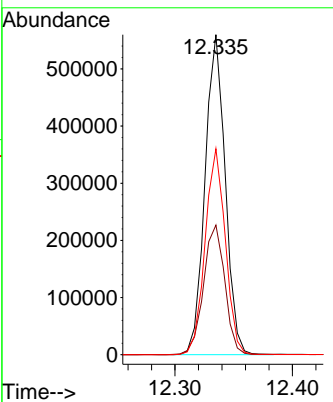
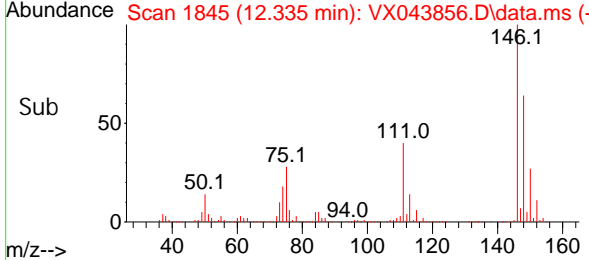
#67
 1, 2-Di chl orobenzene
 Concen: 192.269 ug/L
 RT: 12.335 min Scan# 1845
 Delta R.T. -0.000 min
 Lab File: VX043856.D
 Acq: 14 Nov 2024 16:30

Instrument : MSVOA_X
 ClientSampleId :

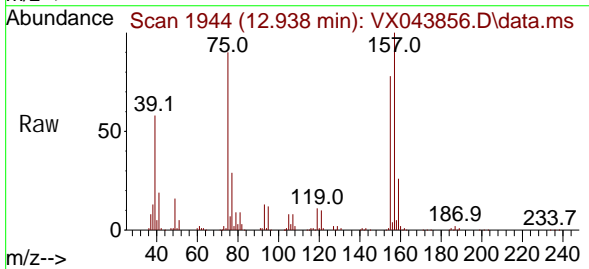


Tgt Ion: 146 Resp: 667799

Ion	Ratio	Lower	Upper
146	100		
111	40.5	33.0	49.4
148	64.4	51.5	77.3

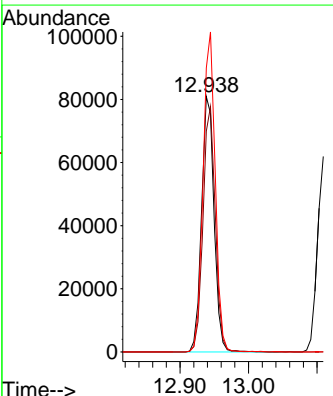
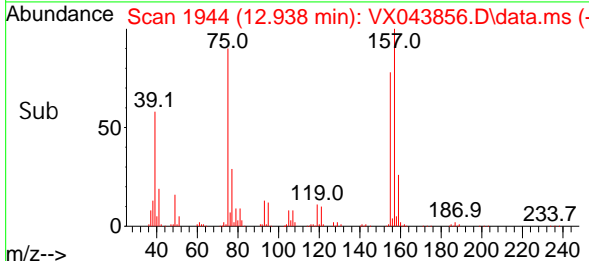


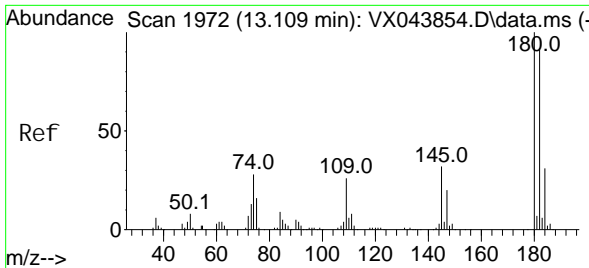
#68
 1, 2-Di bromo-3- chl oropropane
 Concen: 234.053 ug/L
 RT: 12.938 min Scan# 1944
 Delta R.T. -0.000 min
 Lab File: VX043856.D
 Acq: 14 Nov 2024 16:30



Tgt Ion: 75 Resp: 102846

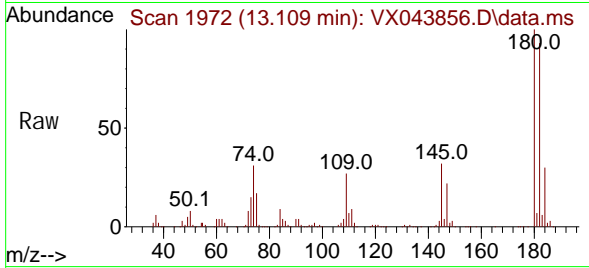
Ion	Ratio	Lower	Upper
75	100		
155	86.5	68.7	103.1
157	111.2	87.2	130.8



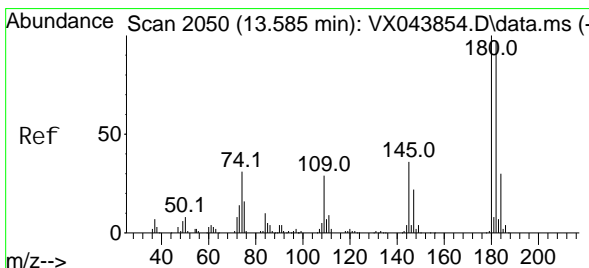
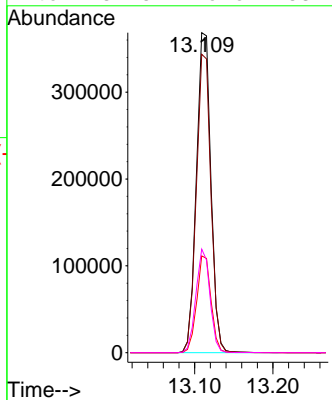
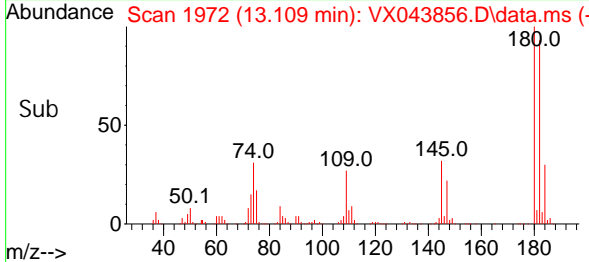


#69
 1, 3, 5-Tri chlorobenzene
 Concen: 208.561 ug/L
 RT: 13.109 min Scan# 1972
 Delta R.T. -0.000 min
 Lab File: VX043856.D
 Acq: 14 Nov 2024 16: 30

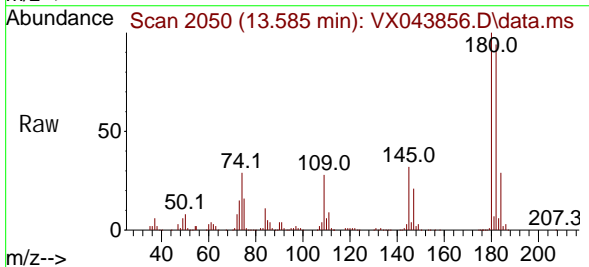
Instrument : MSVOA_X
 ClientSampleId :



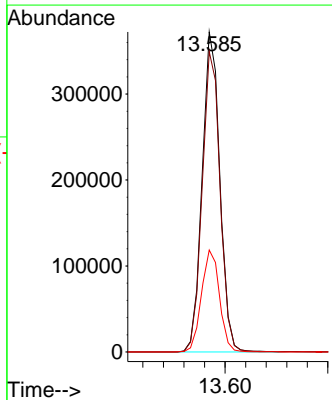
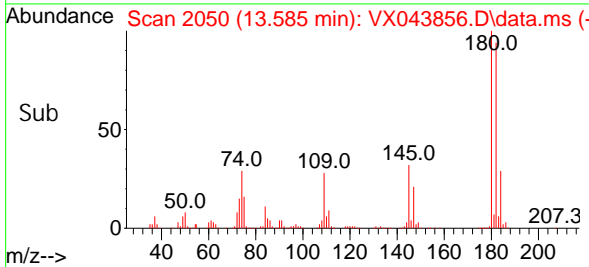
Tgt Ion: 180 Resp: 476104
 Ion Ratio Lower Upper
 180 100
 182 93.5 74.5 111.7
 184 29.8 23.9 35.9
 145 31.3 25.6 38.4

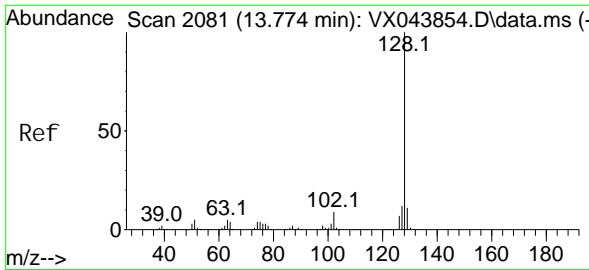


#70
 1, 2, 4-tri chlorobenzene
 Concen: 218.106 ug/L
 RT: 13.585 min Scan# 2050
 Delta R.T. -0.000 min
 Lab File: VX043856.D
 Acq: 14 Nov 2024 16: 30



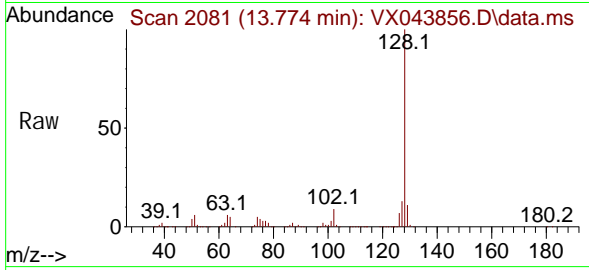
Tgt Ion: 180 Resp: 445520
 Ion Ratio Lower Upper
 180 100
 182 94.7 75.7 113.5
 145 32.5 26.5 39.7



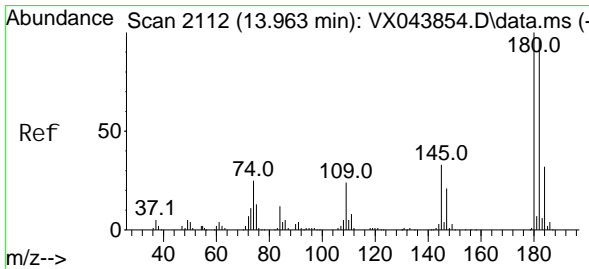
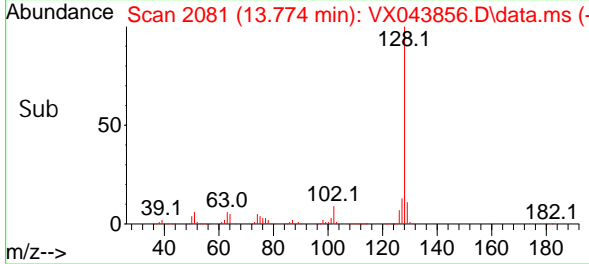
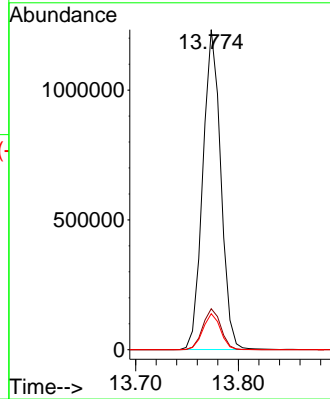


#71
 Naphthalene
 Concen: 209.355 ug/L
 RT: 13.774 min Scan# 2081
 Delta R.T. -0.000 min
 Lab File: VX043856.D
 Acq: 14 Nov 2024 16:30

Instrument : MSVOA_X
 ClientSampleId :



Tgt Ion: 128 Resp: 1502376
 Ion Ratio Lower Upper
 128 100
 127 12.9 9.8 14.6
 129 11.1 8.5 12.7



#72
 1,2,3-Trichlorobenzene
 Concen: 211.629 ug/L
 RT: 13.956 min Scan# 2111
 Delta R.T. -0.006 min
 Lab File: VX043856.D
 Acq: 14 Nov 2024 16:30

Tgt Ion: 180 Resp: 443835
 Ion Ratio Lower Upper
 180 100
 182 96.9 75.7 113.5
 145 34.4 27.6 41.4

