

Data Path : Z:\VOASRV\HPCHEM1\MSVOA X\DATA\VX111518\
 Data File : VX006031.D
 Acq On : 15 Nov 2018 20:13
 Operator : JC/MD
 Sample : J5911-09
 Misc : 5.06µ/10mL/100uL/5.00mL/MSVOA_X/MEOH
 ALS Vial : 16 Sample Multiplier: 1

Instrument :
 MSVOA_X
 ClientSampled :

Quant Time: Nov 16 00:20:12 2018
 Quant Method : Z:\VOASRV\HPCHEM1\MSVOA_X\METHOD\82X110718W.M
 Quant Title : SW846 8260
 QLast Update : Wed Nov 07 14:40:53 2018
 Response via : Initial Calibration

Internal Standards	R.T.	QIon	Response	Conc	Units	Dev(Min)
1) Pentafluorobenzene	5.65	168	147105	50.00	µg/l	0.00
34) 1,4-Difluorobenzene	6.86	114	215025	50.00	µg/l	0.00
63) Chlorobenzene-d5	10.12	117	180652	50.00	µg/l	0.00
72) 1,4-Dichlorobenzene-d4	12.08	152	120488	50.00	µg/l	0.00

System Monitoring Compounds

33) 1,2-Dichloroethane-d4	6.07	65	82013	48.50	µg/l	0.00
Spiked Amount	50.000		Recovery	= 97.00%		
35) Dibromofluoromethane	5.50	113	64938	44.40	µg/l	0.00
Spiked Amount	50.000		Recovery	= 88.80%		
50) Toluene-d8	8.71	98	241947	49.76	µg/l	0.00
Spiked Amount	50.000		Recovery	= 99.52%		
62) 4-Bromofluorobenzene	11.14	95	93727	53.62	µg/l	0.00
Spiked Amount	50.000		Recovery	= 107.24%		

Target Compounds

	R.T.	QIon	Response	Conc	Units	Qvalue
5) Bromomethane	1.64	94	386	0.361	µg/l	95
6) Chloroethane	1.73	64	308	0.295	µg/l #	42
13) Acrolein	2.34	56	45	19.343	µg/l #	14
16) Acetone	2.50	43	979	1.075	µg/l	96
18) Methyl Acetate	2.84	43	7437	1.612	µg/l #	55
20) Methylene Chloride	2.84	84	931	0.622	µg/l #	90
29) Tetrahydrofuran	5.20	42	997	1.085	µg/l #	44
30) Chloroform	5.21	83	3236	1.236	µg/l	100
31) Cyclohexane	5.56	56	13696	5.813	µg/l	95
36) 1,1-Dichloropropene	5.65	75	9945	4.798	µg/l #	49
38) Carbon Tetrachloride	5.66	117	12816	6.176	µg/l #	15
39) Methylcyclohexane	7.46	83	66015	31.422	µg/l	94
43) Isopropyl Acetate	6.49	43	941	0.238	µg/l #	63
45) 1,2-Dichloropropane	7.45	63	657	0.448	µg/l #	1
47) Bromodichloromethane	7.90	83	435	0.250	µg/l #	91
48) Methyl methacrylate	7.73	41	3200	1.804	µg/l #	48
51) 4-Methyl-2-Pentanone	8.66	43	6780	2.724	µg/l #	38
52) Toluene	8.78	92	945	0.280	µg/l	95
55) 1,1,2-Trichloroethane	9.16	97	15790	10.490	µg/l #	18
56) Ethyl methacrylate	9.16	69	3732	1.657	µg/l #	1
58) 2-Chloroethyl Vinyl ether	8.38	63	44	8.313	µg/l #	48
59) 2-Hexanone	9.55	43	13044	5.945	µg/l #	46
67) Ethyl Benzene	10.25	91	1478	0.255	µg/l	98
68) m/p-Xylenes	10.36	106	2025	0.915	µg/l	74
69) o-Xylene	10.70	106	568	0.286	µg/l	52
73) Isopropylbenzene	11.02	105	1707	0.245	µg/l	92
74) N-amyl acetate	10.91	43	32377	9.325	µg/l #	1
75) 1,1,2,2-Tetrachloroethane	11.27	83	17912	7.004	µg/l #	26
76) 1,2,3-Trichloropropane	11.14	75	42868	17.473	µg/l #	38
78) n-propylbenzene	11.37	91	4767	0.581	µg/l	90
79) 2-Chlorotoluene	11.44	91	1162	0.234	µg/l	95
80) 1,3,5-Trimethylbenzene	11.51	105	1308	0.221	µg/l	93
81) trans-1,4-Dichloro-2-buten	11.14	75	42868	55.689	µg/l #	13
83) tert-Butylbenzene	11.77	119	2692	0.449	µg/l	74

Data Path : Z:\VOASRV\HPCHEM1\MSVOA X\DATA\VX111518\
 Data File : VX006031.D
 Acq On : 15 Nov 2018 20:13
 Operator : JC/MD
 Sample : J5911-09
 Misc : 5.06µ/10mL/100uL/5.00mL/MSVOA_X/MEOH
 ALS Vial : 16 Sample Multiplier: 1

Instrument :
 MSVOA_X
 ClientSampleId :

Quant Time: Nov 16 00:20:12 2018
 Quant Method : Z:\VOASRV\HPCHEM1\MSVOA_X\METHOD\82X110718W.M
 Quant Title : SW846 8260
 QLast Update : Wed Nov 07 14:40:53 2018
 Response via : Initial Calibration

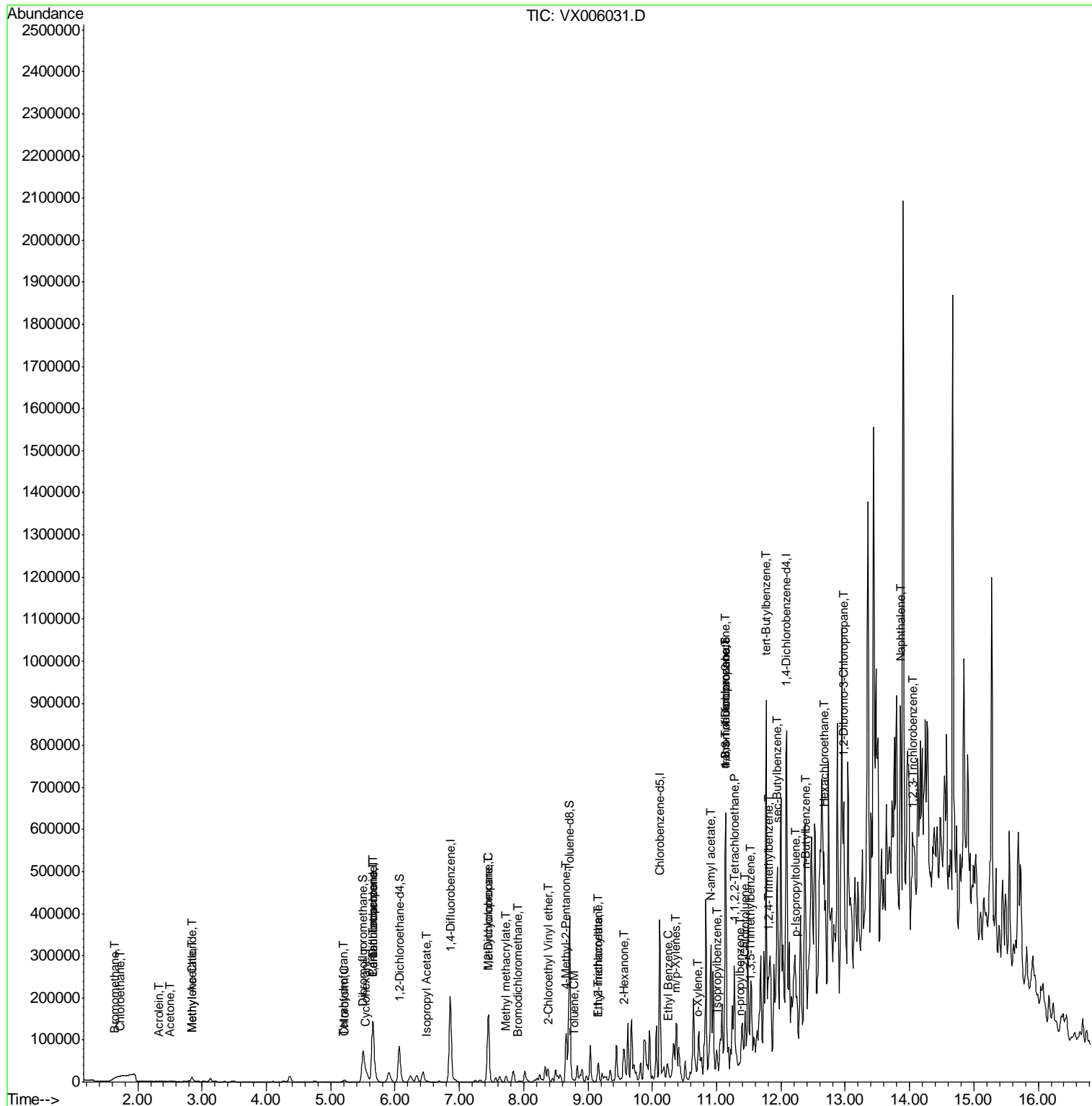
Internal Standards	R.T.	QIon	Response	Conc	Units	Dev(Min)
84) 1,2,4-Trimethylbenzene	11.81	105	4721	0.604	µg/l	98
85) sec-Butylbenzene	11.95	105	11098	1.515	µg/l #	77
86) p-Isopropyltoluene	12.24	119	11739	1.809	µg/l #	87
89) n-Butylbenzene	12.39	91	18575	3.089	µg/l #	65
90) Hexachloroethane	12.67	117	15057	13.899	µg/l #	2
92) 1,2-Dibromo-3-Chloropropan	12.97	75	1074	1.721	µg/l #	1
95) Naphthalene	13.85	128	4075	1.636	µg/l #	1
96) 1,2,3-Trichlorobenzene	14.04	180	3807	1.406	µg/l #	1

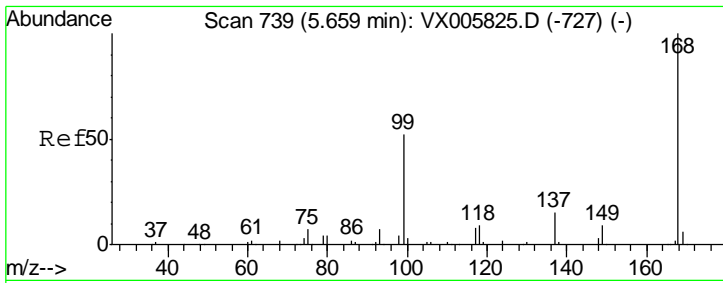
(#) = qualifier out of range (m) = manual integration (+) = signals summed

Data Path : Z:\VOASRV\HPCHEM1\MSVOA X\DATA\VX111518\
 Data File : VX006031.D
 Acq On : 15 Nov 2018 20:13
 Operator : JC/MD
 Sample : J5911-09
 Misc : 5.06µ/10mL/100uL/5.00mL/MSVOA_X/MEOH
 ALS Vial : 16 Sample Multiplier: 1

Instrument :
 MSVOA_X
 Client Sampled :

Quant Time: Nov 16 00:20:12 2018
 Quant Method : Z:\VOASRV\HPCHEM1\MSVOA_X\METHOD\82X110718W.M
 Quant Title : SW846 8260
 QLast Update : Wed Nov 07 14:40:53 2018
 Response via : Initial Calibration

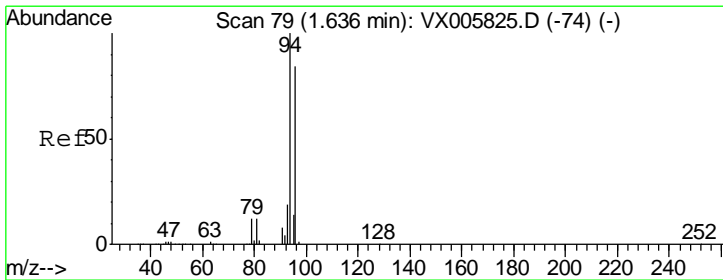
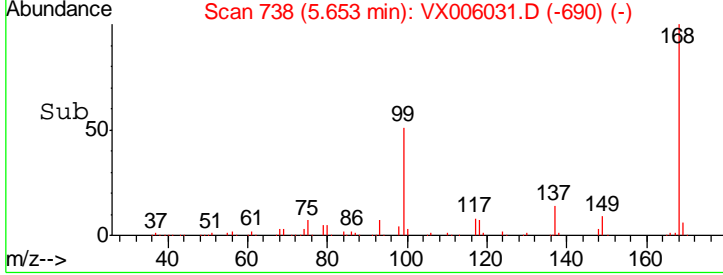
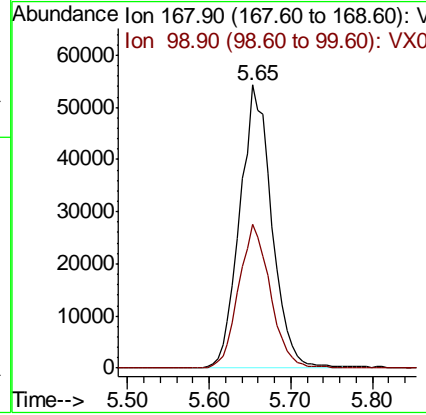
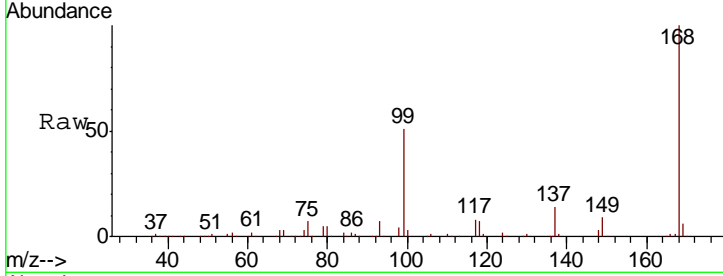




#1
 Pentafluorobenzene
 Concen: 50.000 ug/l
 RT: 5.65 min Scan# 738
 Delta R.T. -0.01 min
 Lab File: VX006031.D
 Acq: 15 Nov 2018 20:13

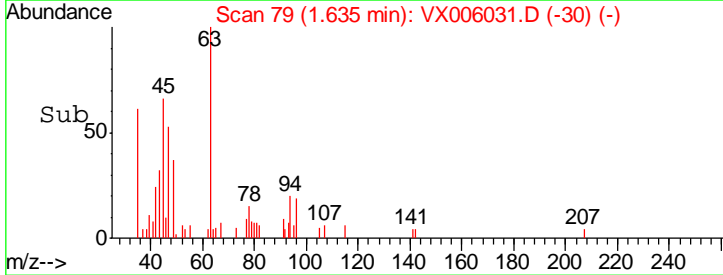
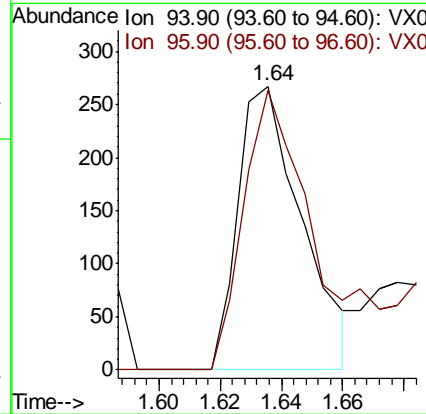
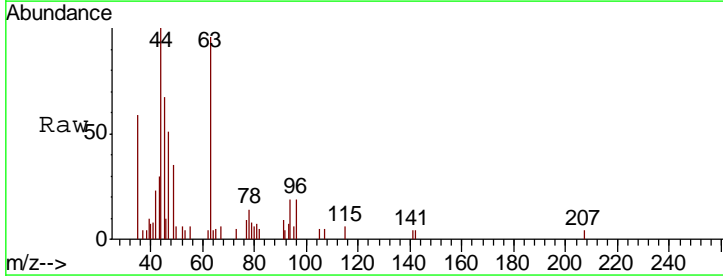
Instrument :
 MSVOA_X
 ClientSampled :

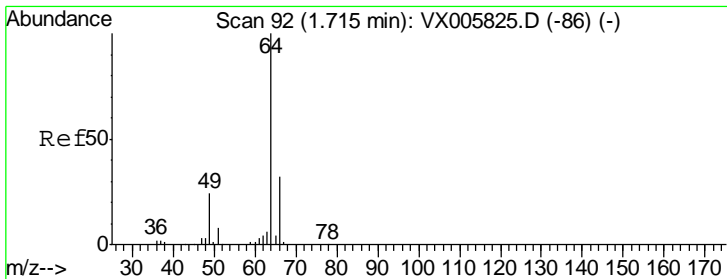
Tgt Ion: 168 Resp: 147105
 Ion Ratio Lower Upper
 168 100
 99 50.7 40.7 61.1



#5
 Bromomethane
 Concen: 0.361 ug/l
 RT: 1.64 min Scan# 79
 Delta R.T. -0.00 min
 Lab File: VX006031.D
 Acq: 15 Nov 2018 20:13

Tgt Ion: 94 Resp: 386
 Ion Ratio Lower Upper
 94 100
 96 98.5 75.2 112.8

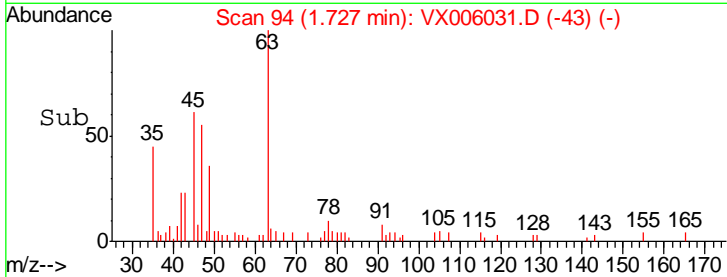
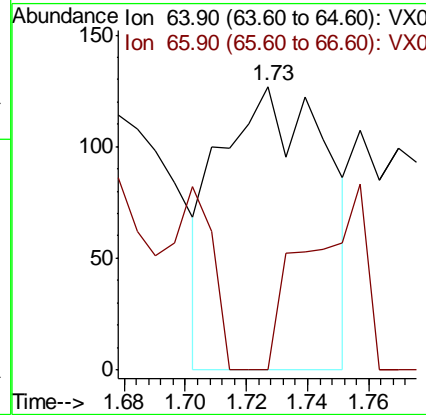
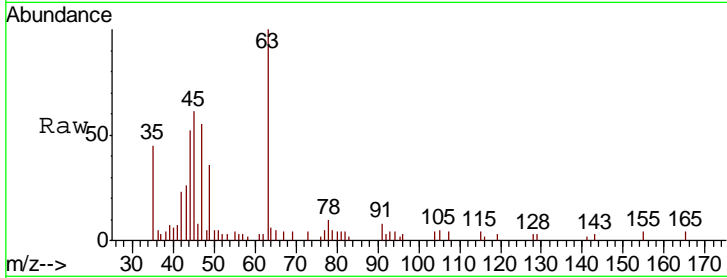




#6
 Chloroethane
 Concen: 0.295 ug/l
 RT: 1.73 min Scan# 94
 Delta R.T. 0.01 min
 Lab File: VX006031.D
 Acq: 15 Nov 2018 20:13

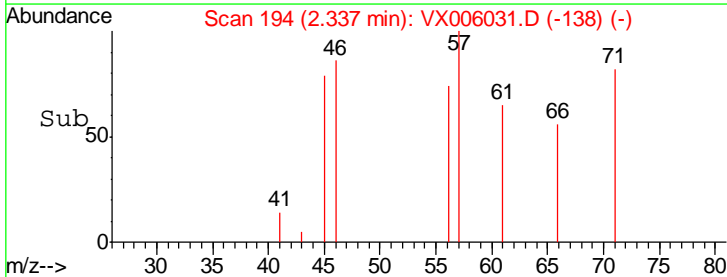
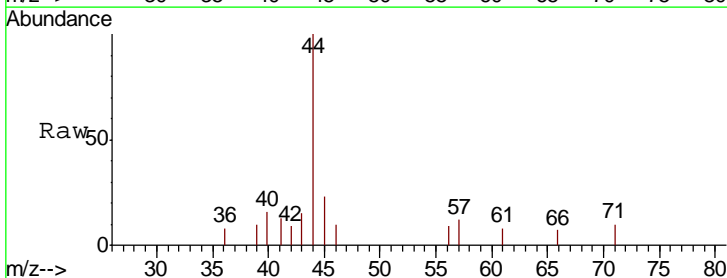
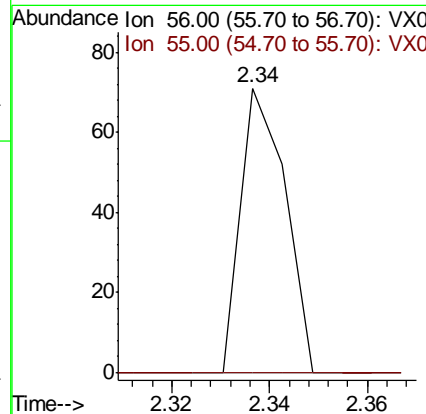
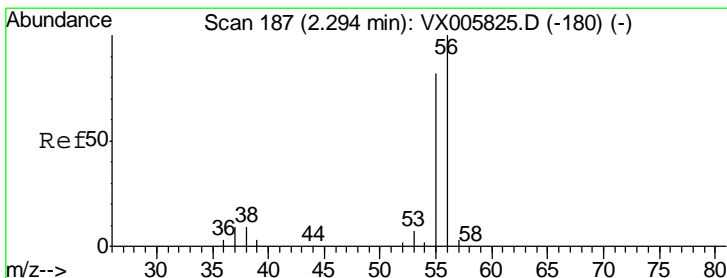
Instrument : MSVOA_X
 ClientSampled :

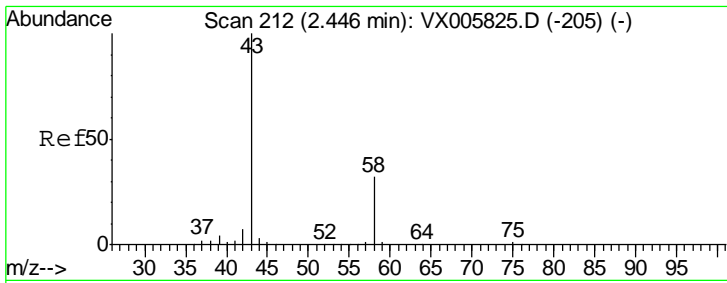
Tgt Ion	Resp	Lower	Upper
64	100		
66	0.0	25.8	38.6#



#13
 Acrolein
 Concen: 19.343 ug/l
 RT: 2.34 min Scan# 194
 Delta R.T. 0.04 min
 Lab File: VX006031.D
 Acq: 15 Nov 2018 20:13

Tgt Ion	Resp	Lower	Upper
56	100		
55	0.0	57.3	85.9#

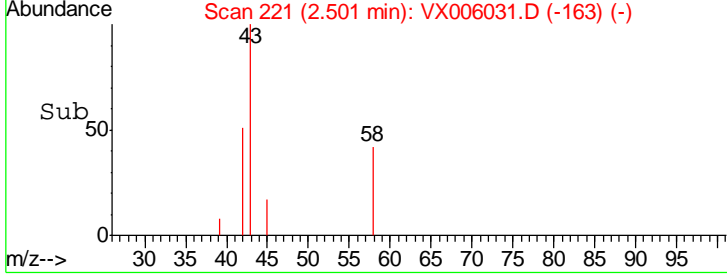
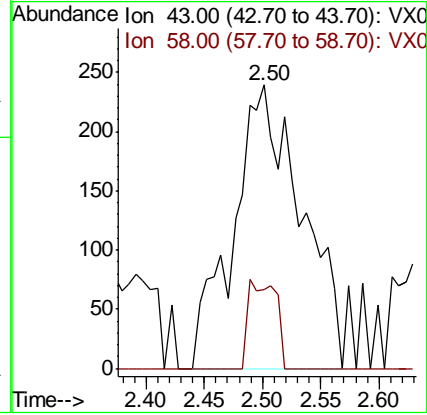
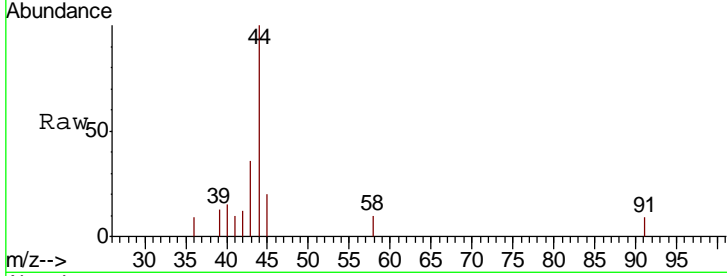




#16
 Acetone
 Concen: 1.075 ug/l
 RT: 2.50 min Scan# 221
 Delta R.T. 0.05 min
 Lab File: VX006031.D
 Acq: 15 Nov 2018 20:13

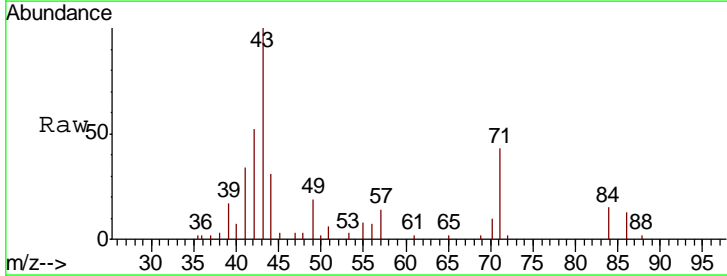
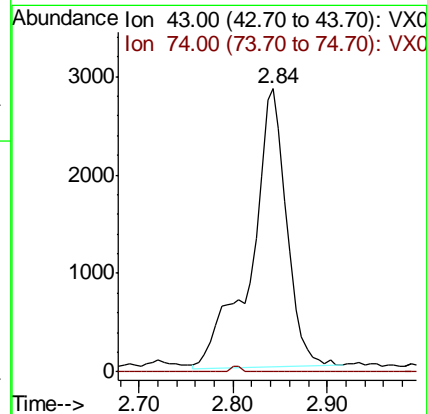
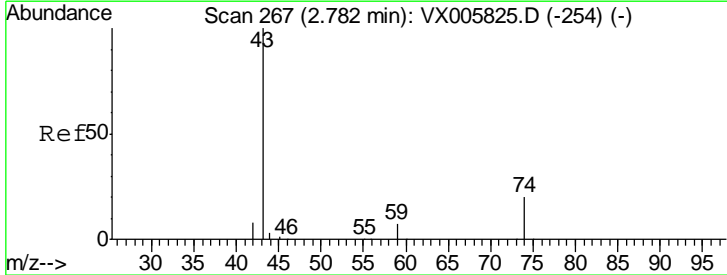
Instrument :
 MSVOA_X
 ClientSampled :

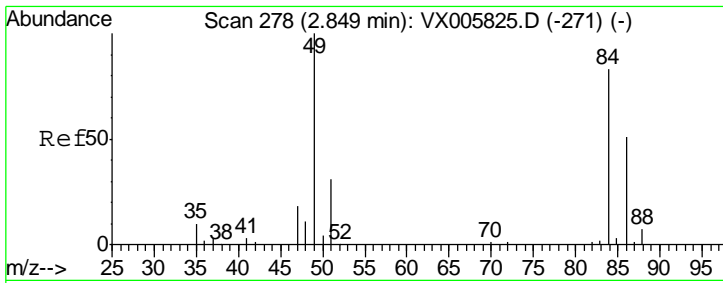
Tgt Ion	Resp	Lower	Upper
43	100		
58	27.6	23.8	35.6



#18
 Methyl Acetate
 Concen: 1.612 ug/l
 RT: 2.84 min Scan# 277
 Delta R.T. 0.06 min
 Lab File: VX006031.D
 Acq: 15 Nov 2018 20:13

Tgt Ion	Resp	Lower	Upper
43	100		
74	0.0	16.8	25.2#

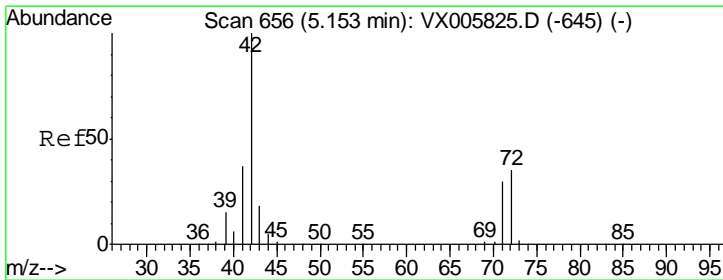
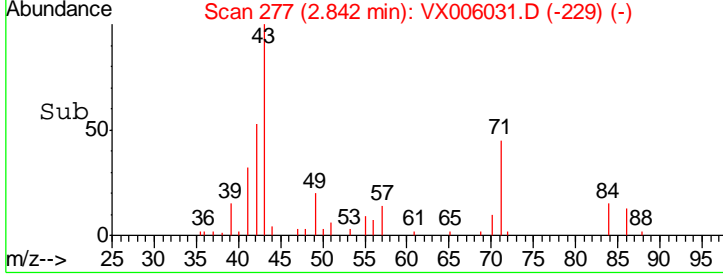
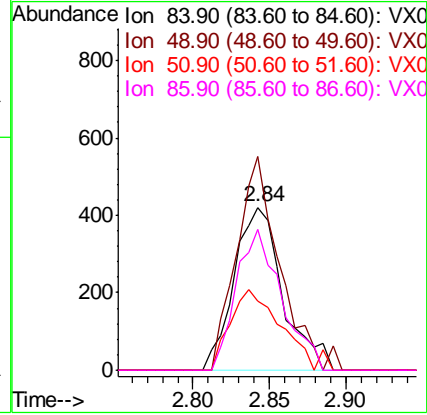
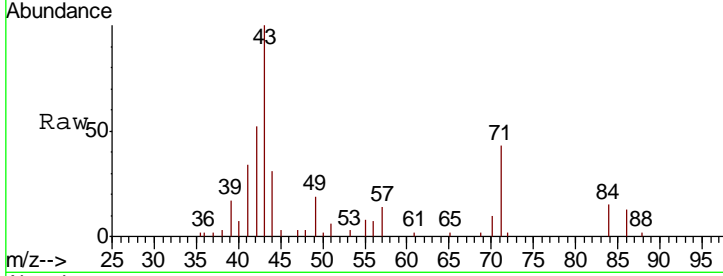




#20
 Methylene Chloride
 Concen: 0.622 ug/l
 RT: 2.84 min Scan# 277
 Delta R.T. -0.01 min
 Lab File: VX006031.D
 Acq: 15 Nov 2018 20:13

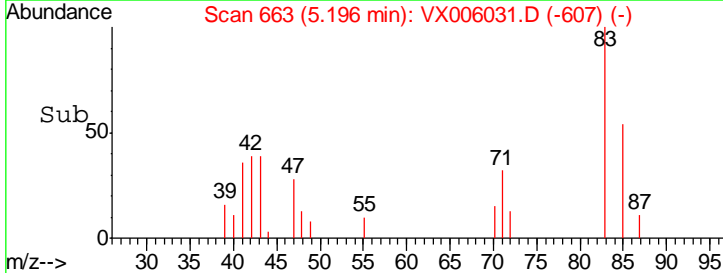
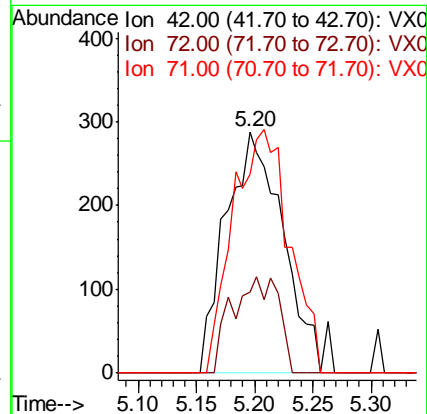
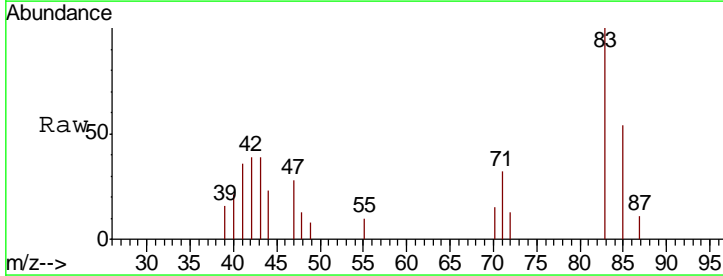
Instrument :
 MSVOA_X
 ClientSampled :

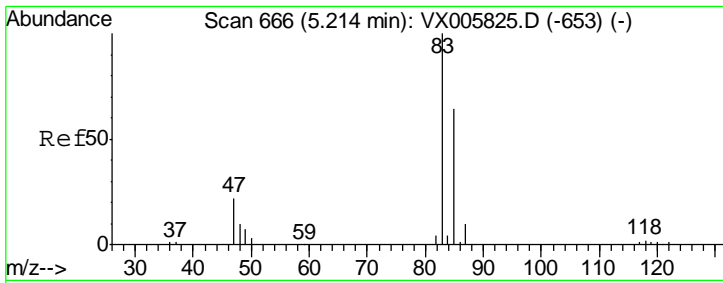
Tgt Ion	Resp	Lower	Upper
84	100		
49	131.4	109.5	164.3
51	42.6	33.3	49.9
86	86.2	52.7	79.1#



#29
 Tetrahydrofuran
 Concen: 1.085 ug/l
 RT: 5.20 min Scan# 663
 Delta R.T. 0.04 min
 Lab File: VX006031.D
 Acq: 15 Nov 2018 20:13

Tgt Ion	Resp	Lower	Upper
42	100		
72	31.7	32.0	48.0#
71	98.2	29.8	44.8#

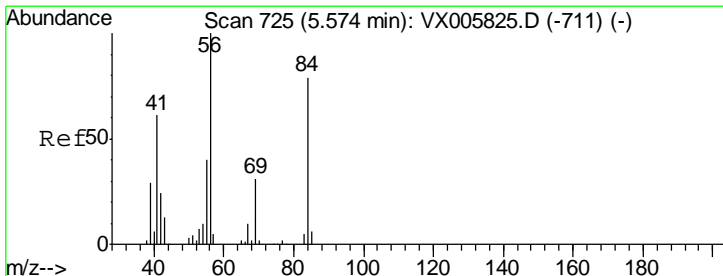
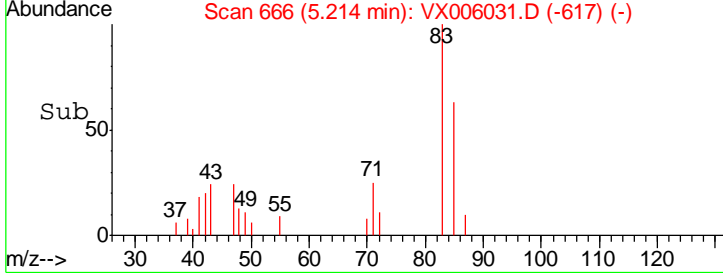
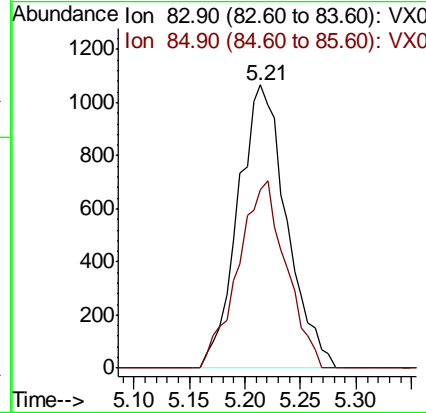
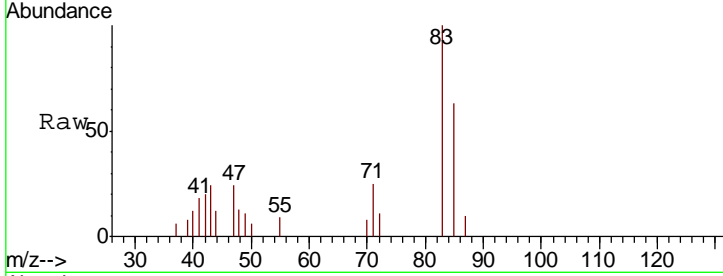




#30
 Chloroform
 Concen: 1.236 ug/l
 RT: 5.21 min Scan# 666
 Delta R.T. -0.00 min
 Lab File: VX006031.D
 Acq: 15 Nov 2018 20:13

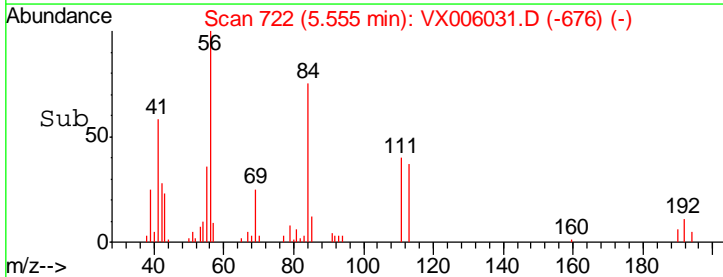
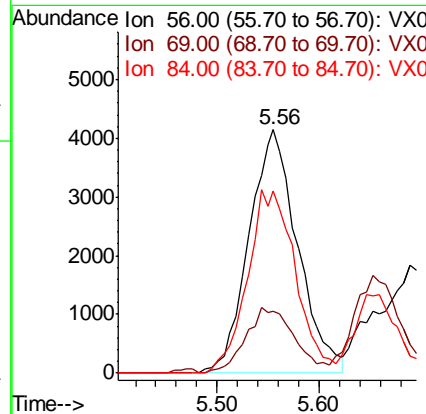
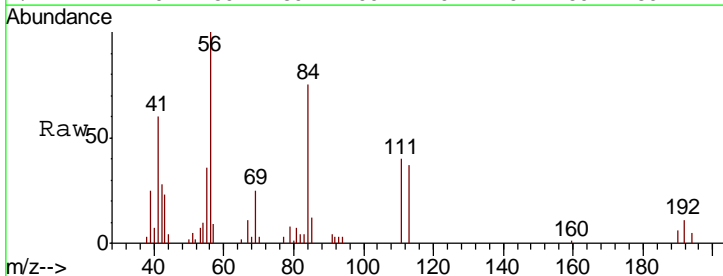
Instrument :
 MSVOA_X
 ClientSampled :

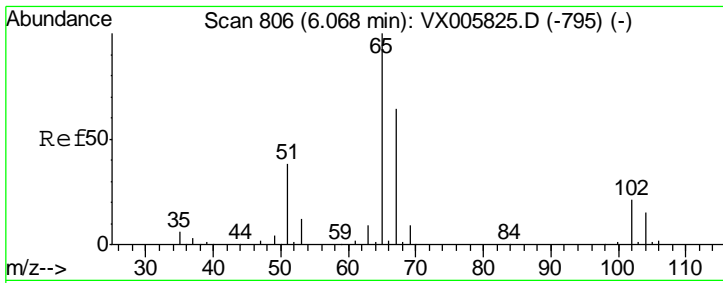
Tgt Ion	Resp	Lower	Upper
83	100		
85	63.1	50.6	76.0



#31
 Cyclohexane
 Concen: 5.813 ug/l
 RT: 5.56 min Scan# 722
 Delta R.T. -0.02 min
 Lab File: VX006031.D
 Acq: 15 Nov 2018 20:13

Tgt Ion	Resp	Lower	Upper
56	100		
69	23.7	22.6	34.0
84	74.8	62.7	94.1

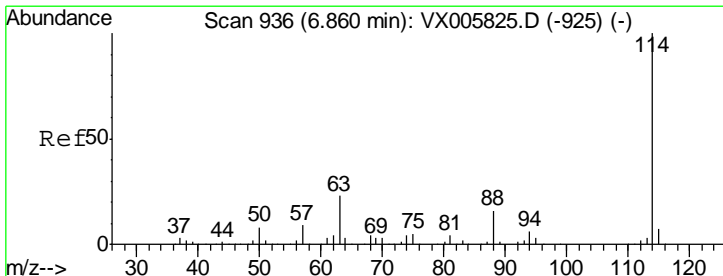
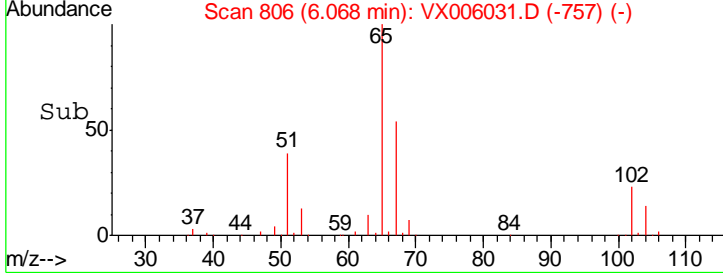
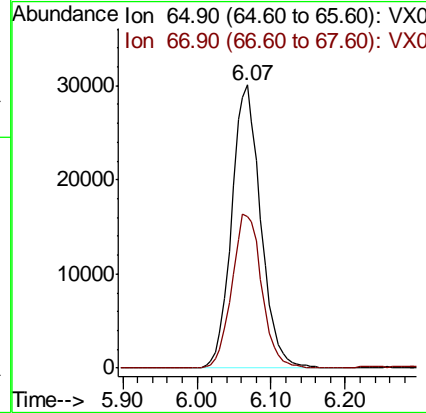
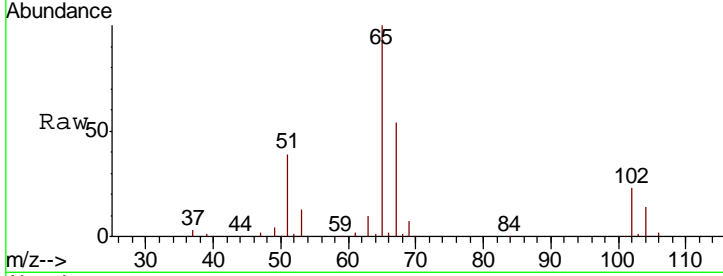




#33
 1,2-Dichloroethane-d4
 Concen: 48.495 ug/l
 RT: 6.07 min Scan# 806
 Delta R.T. -0.00 min
 Lab File: VX006031.D
 Acq: 15 Nov 2018 20:13

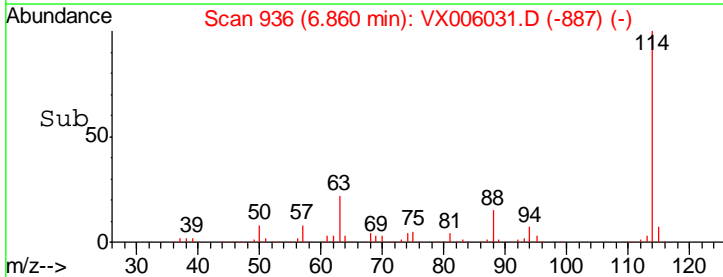
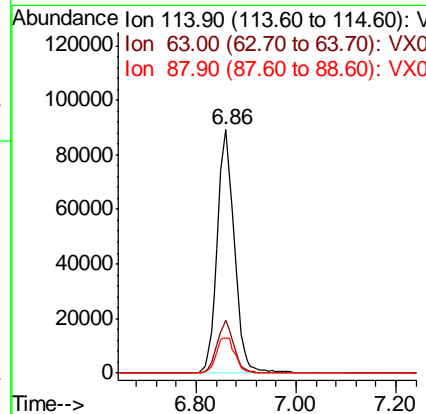
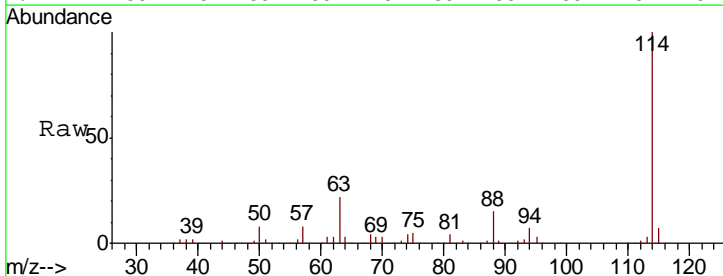
Instrument :
 MSVOA_X
 ClientSampled :

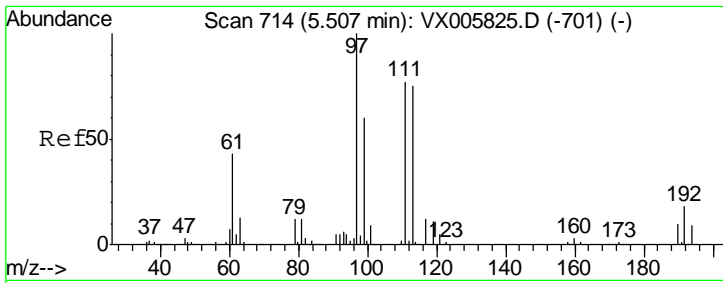
Tgt Ion	Resp	Lower	Upper
65	100		
67	56.0	0.0	105.0



#34
 1,4-Difluorobenzene
 Concen: 50.000 ug/l
 RT: 6.86 min Scan# 936
 Delta R.T. -0.00 min
 Lab File: VX006031.D
 Acq: 15 Nov 2018 20:13

Tgt Ion	Resp	Lower	Upper
114	100		
63	21.6	0.0	42.8
88	14.6	0.0	31.2

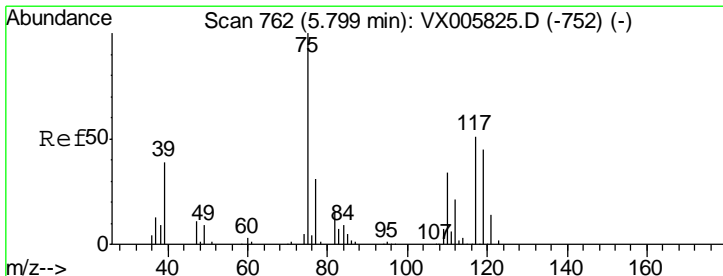
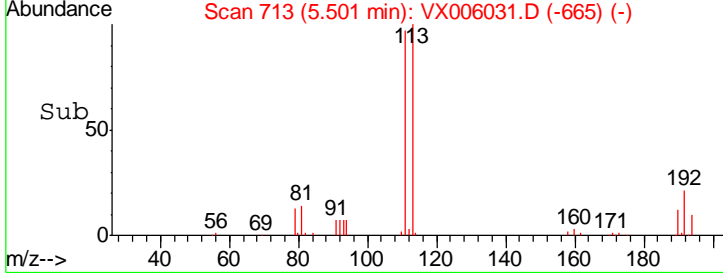
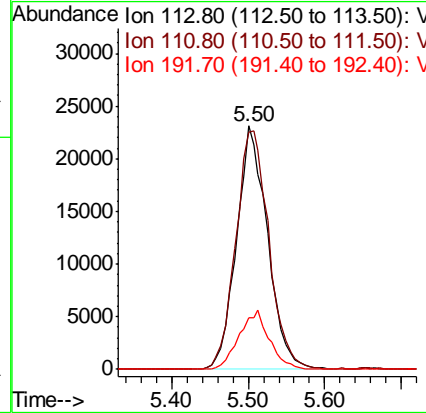
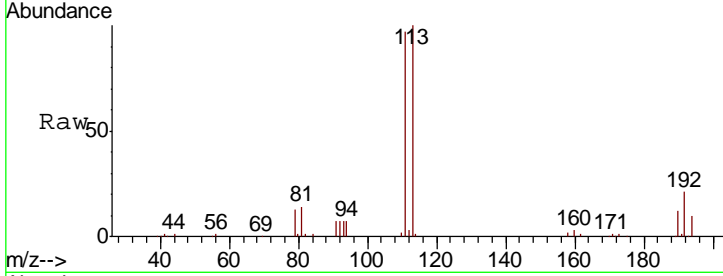




#35
 Dibromofluoromethane
 Concen: 44.402 ug/l
 RT: 5.50 min Scan# 713
 Delta R.T. -0.01 min
 Lab File: VX006031.D
 Acq: 15 Nov 2018 20:13

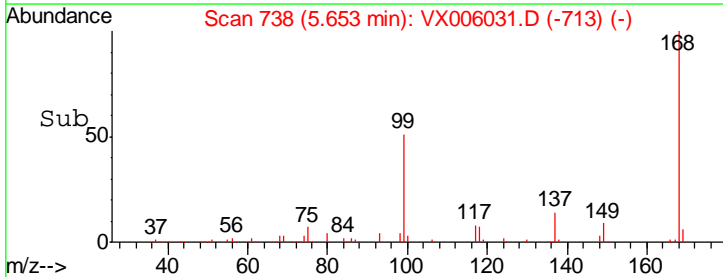
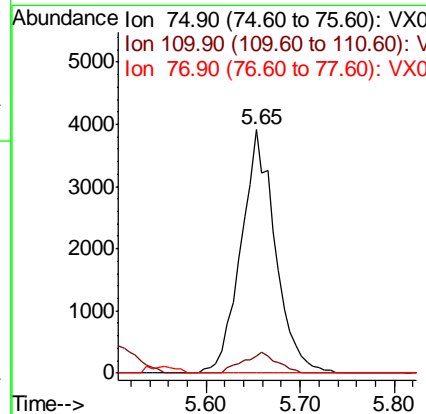
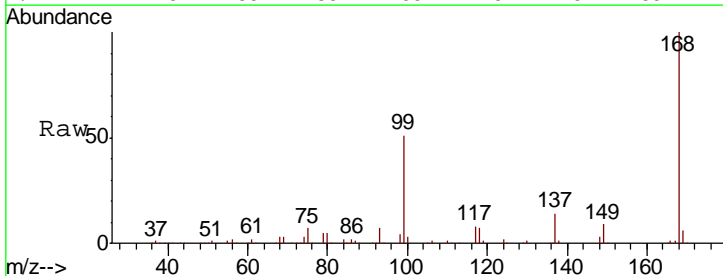
Instrument :
 MSVOA_X
 ClientSampled :

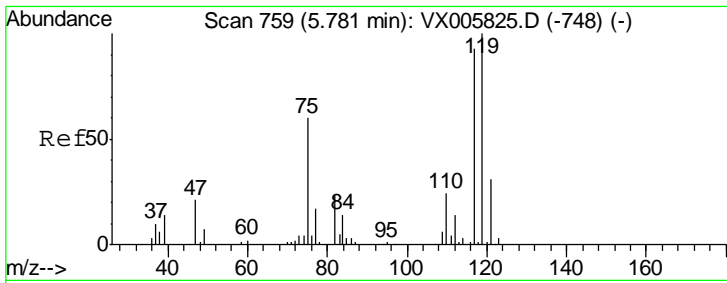
Tgt Ion	Resp	Lower	Upper
113	64938		
111	104.7	82.3	123.5
192	23.7	17.9	26.9



#36
 1,1-Dichloropropene
 Concen: 4.798 ug/l
 RT: 5.65 min Scan# 738
 Delta R.T. -0.15 min
 Lab File: VX006031.D
 Acq: 15 Nov 2018 20:13

Tgt Ion	Resp	Lower	Upper
75	9945		
110	8.5	17.4	52.2#
77	0.0	25.8	38.6#

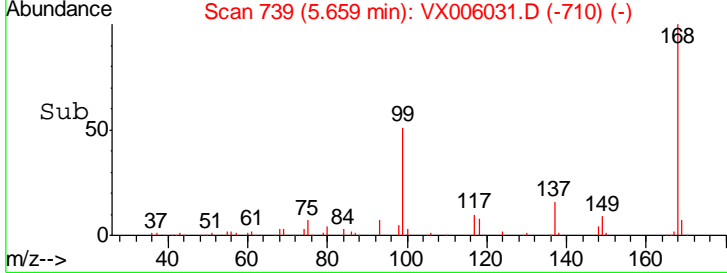
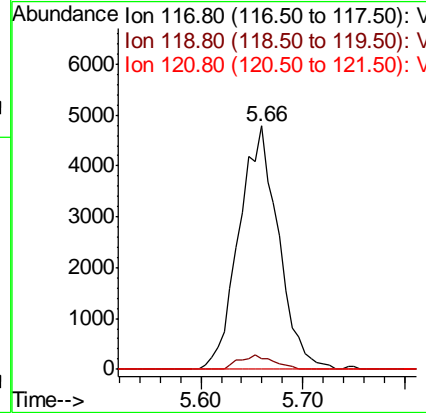
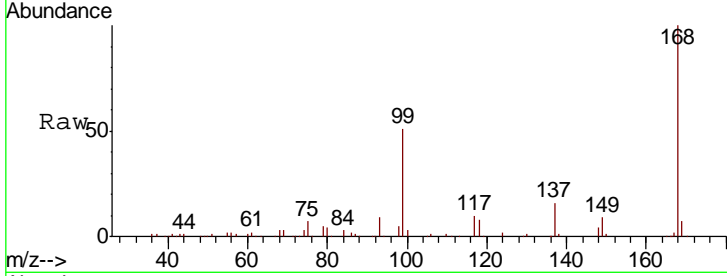




#38
 Carbon Tetrachloride
 Concen: 6.176 ug/l
 RT: 5.66 min Scan# 739
 Delta R.T. -0.12 min
 Lab File: VX006031.D
 Acq: 15 Nov 2018 20:13

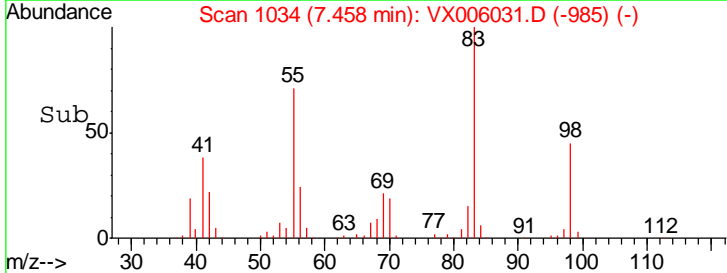
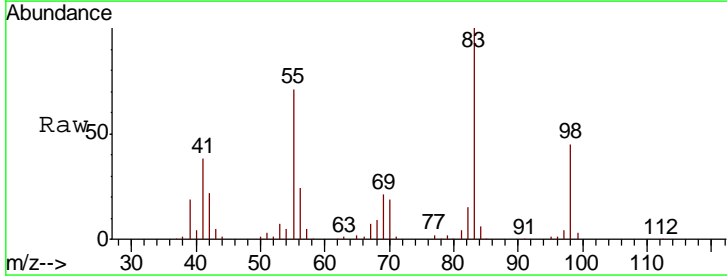
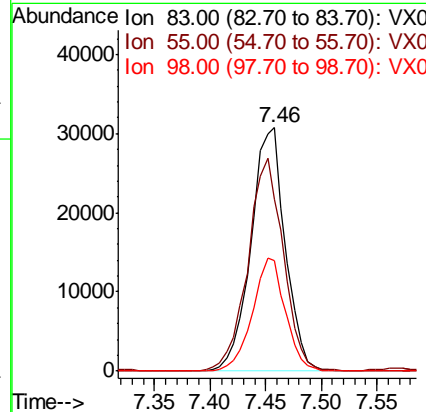
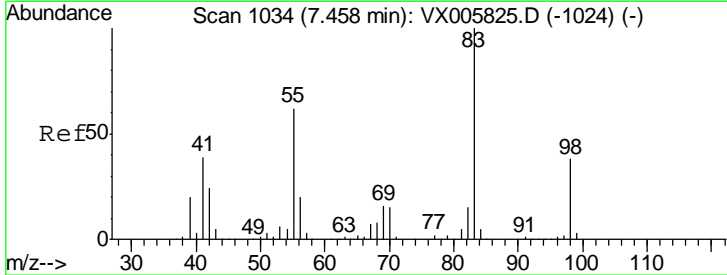
Instrument :
 MSVOA_X
 ClientSampled :

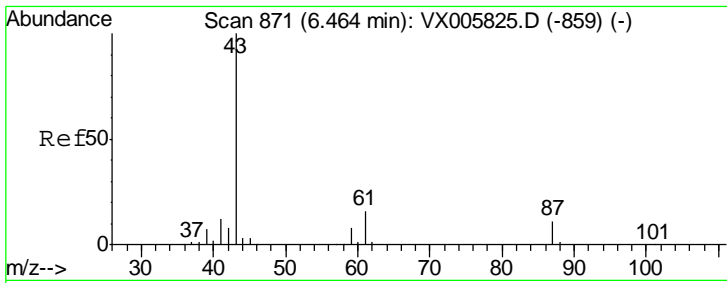
Tgt Ion	Resp	Lower	Upper
117	12816		
117	100		
119	4.3	78.1	117.1#
121	0.0	24.6	36.8#



#39
 Methylcyclohexane
 Concen: 31.422 ug/l
 RT: 7.46 min Scan# 1034
 Delta R.T. -0.00 min
 Lab File: VX006031.D
 Acq: 15 Nov 2018 20:13

Tgt Ion	Resp	Lower	Upper
83	66015		
83	100		
55	70.7	63.7	95.5
98	45.3	36.2	54.2

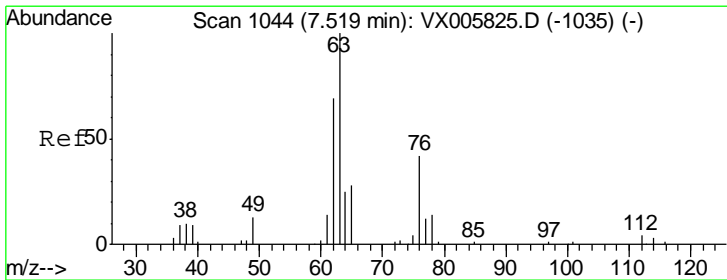
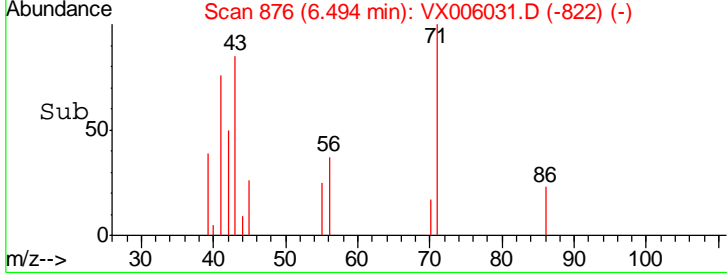
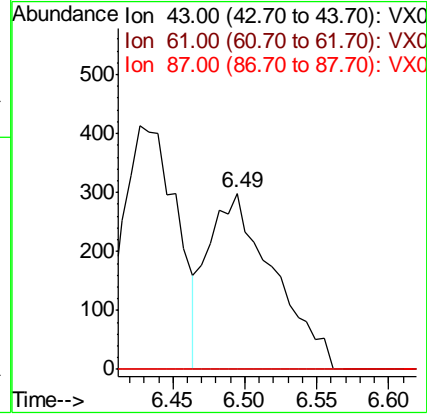
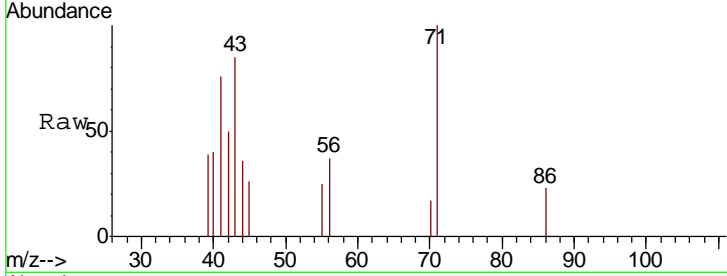




#43
 Isopropyl Acetate
 Concen: 0.238 ug/l
 RT: 6.49 min Scan# 876
 Delta R.T. 0.03 min
 Lab File: VX006031.D
 Acq: 15 Nov 2018 20:13

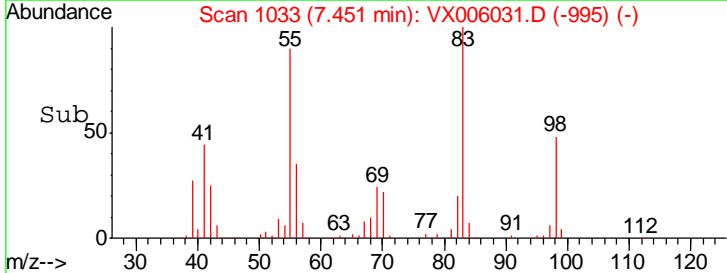
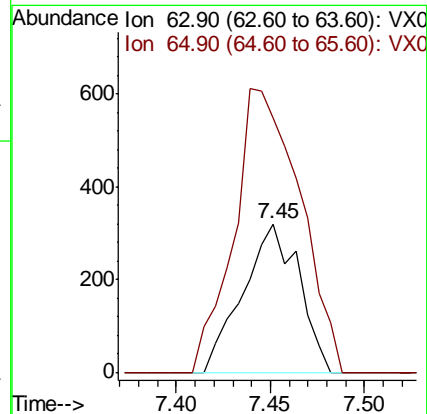
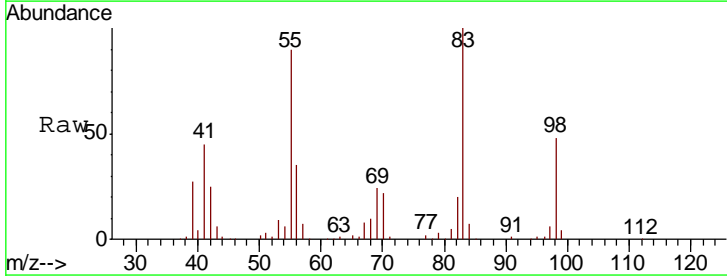
Instrument :
 MSVOA_X
 ClientSampled :

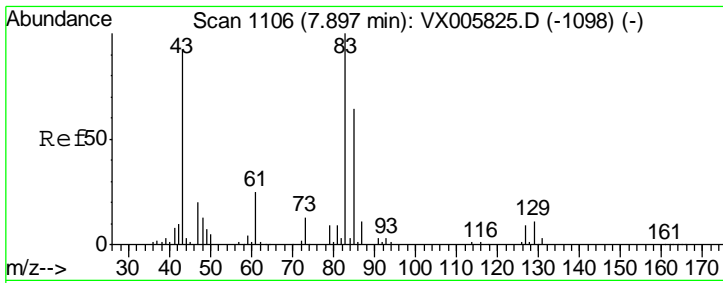
Tgt Ion	Resp	Lower	Upper
43	100		
61	0.0	14.6	22.0#
87	0.0	9.6	14.4#



#45
 1,2-Dichloropropane
 Concen: 0.448 ug/l
 RT: 7.45 min Scan# 1033
 Delta R.T. -0.07 min
 Lab File: VX006031.D
 Acq: 15 Nov 2018 20:13

Tgt Ion	Resp	Lower	Upper
63	100		
65	171.3	24.8	37.2#

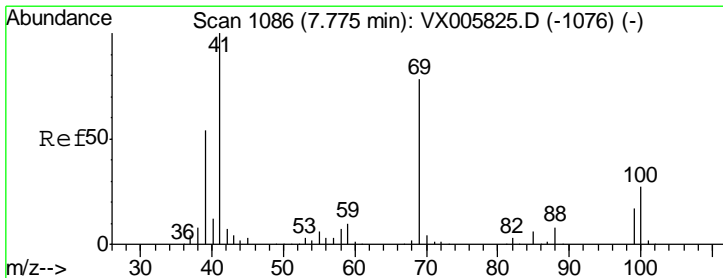
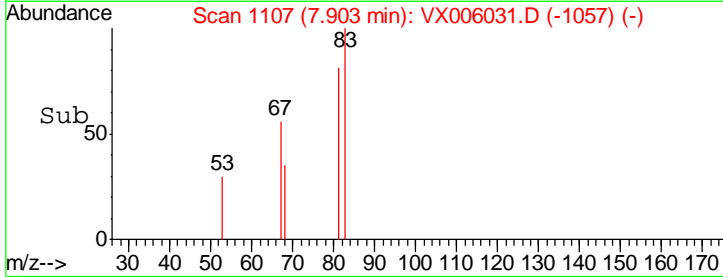
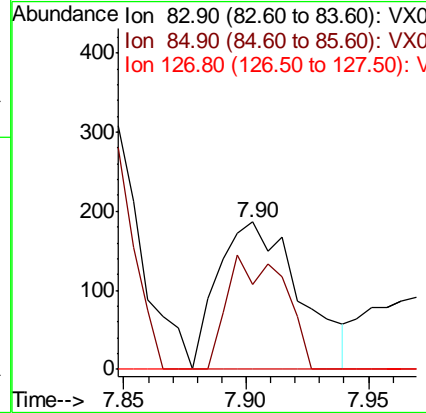
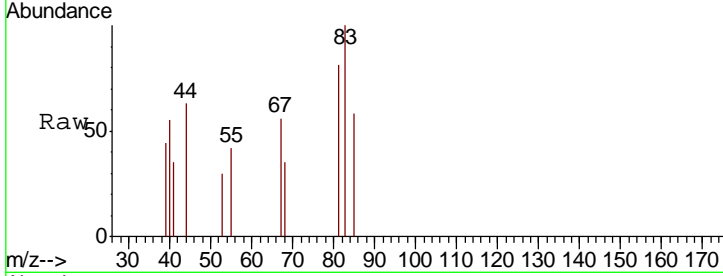




#47
 Bromodichloromethane
 Concen: 0.250 ug/l
 RT: 7.90 min Scan# 1107
 Delta R.T. 0.01 min
 Lab File: VX006031.D
 Acq: 15 Nov 2018 20:13

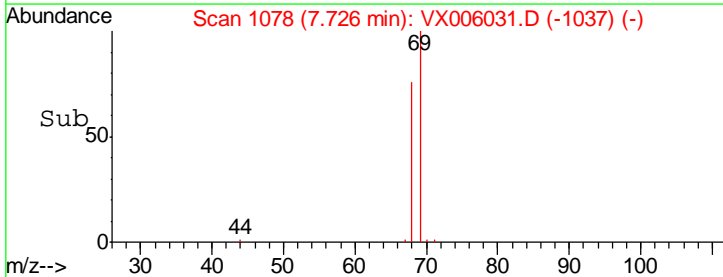
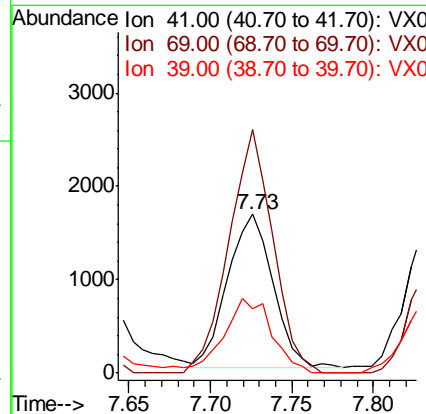
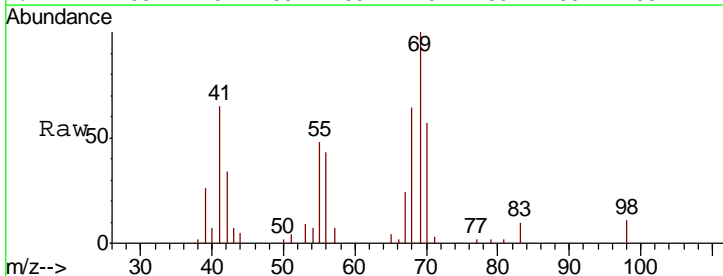
Instrument :
 MSVOA_X
 ClientSampled :

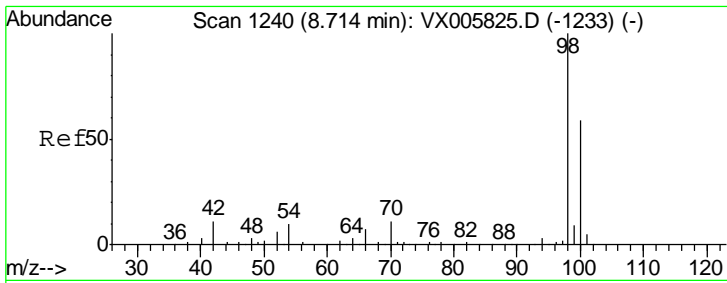
Tgt Ion	Resp	Lower	Upper
83	435		
85	57.5	50.2	75.4
127	0.0	6.9	10.3#



#48
 Methyl methacrylate
 Concen: 1.804 ug/l
 RT: 7.73 min Scan# 1078
 Delta R.T. -0.05 min
 Lab File: VX006031.D
 Acq: 15 Nov 2018 20:13

Tgt Ion	Resp	Lower	Upper
41	3200		
69	153.4	63.2	94.8#
39	51.2	42.2	63.2

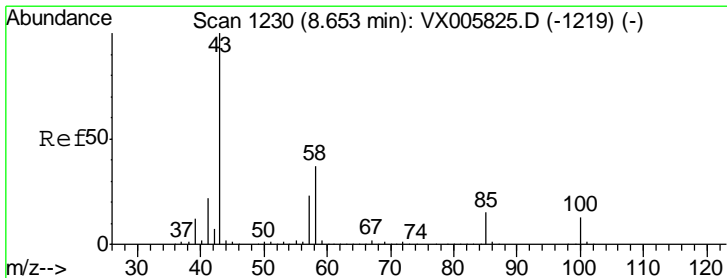
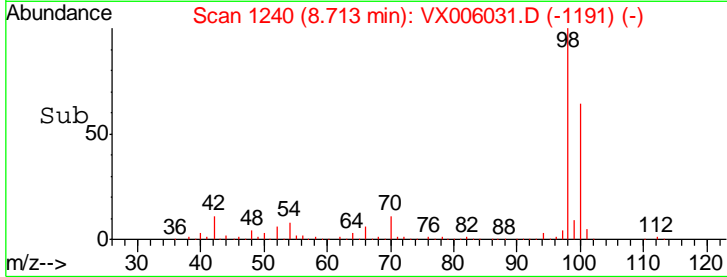
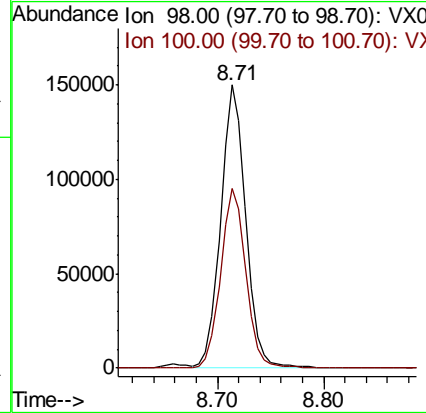
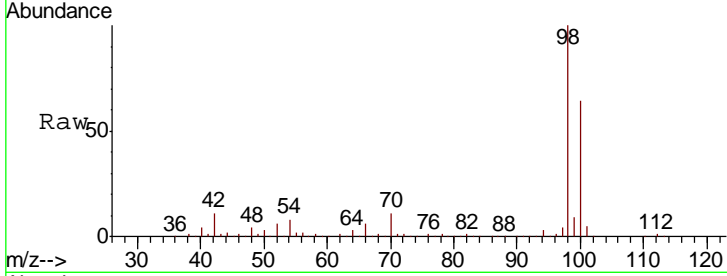




#50
 Toluene-d8
 Concen: 49.761 ug/l
 RT: 8.71 min Scan# 1240
 Delta R.T. -0.00 min
 Lab File: VX006031.D
 Acq: 15 Nov 2018 20:13

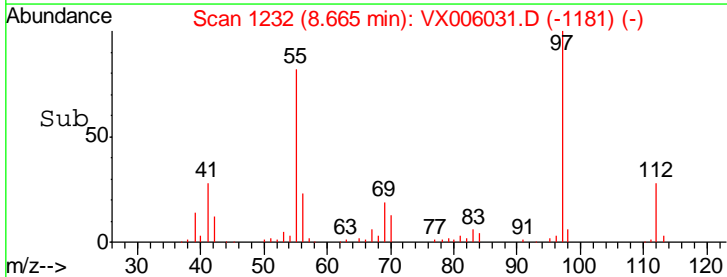
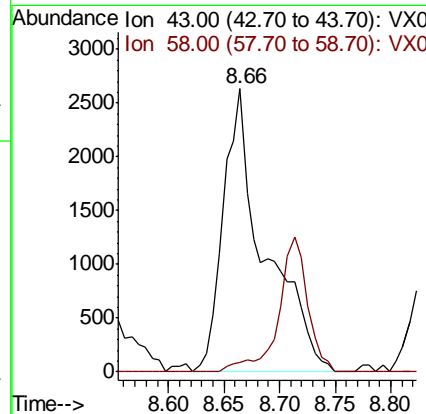
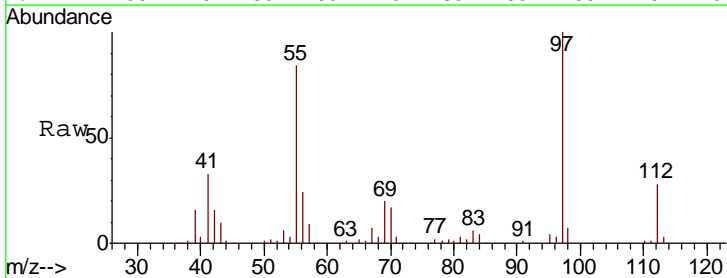
Instrument :
 MSVOA_X
 ClientSampled :

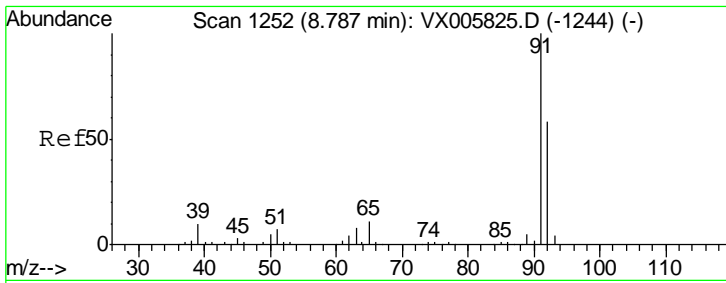
Tgt Ion: 98 Resp: 241947
 Ion Ratio Lower Upper
 98 100
 100 64.9 51.3 76.9



#51
 4-Methyl-2-Pentanone
 Concen: 2.724 ug/l
 RT: 8.66 min Scan# 1232
 Delta R.T. 0.01 min
 Lab File: VX006031.D
 Acq: 15 Nov 2018 20:13

Tgt Ion: 43 Resp: 6780
 Ion Ratio Lower Upper
 43 100
 58 0.0 29.7 44.5#

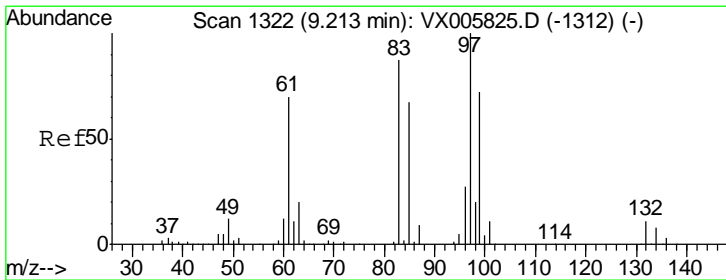
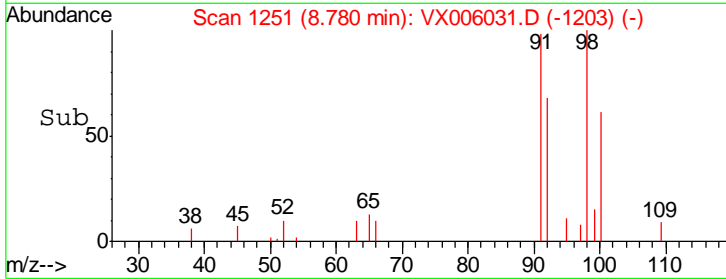
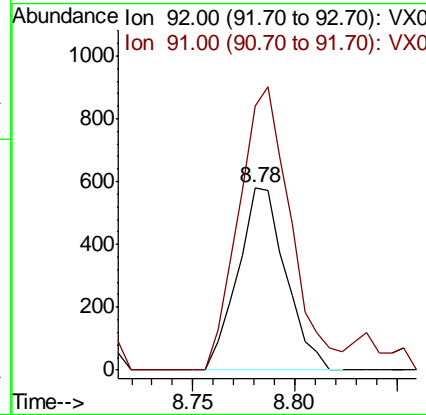
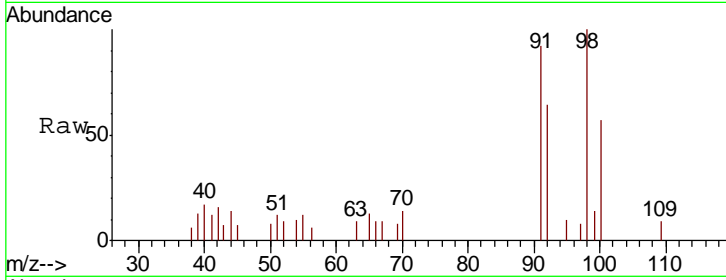




#52
 Toluene
 Concen: 0.280 ug/l
 RT: 8.78 min Scan# 1251
 Delta R.T. -0.01 min
 Lab File: VX006031.D
 Acq: 15 Nov 2018 20:13

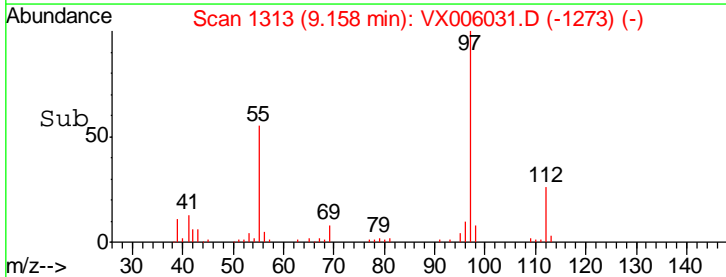
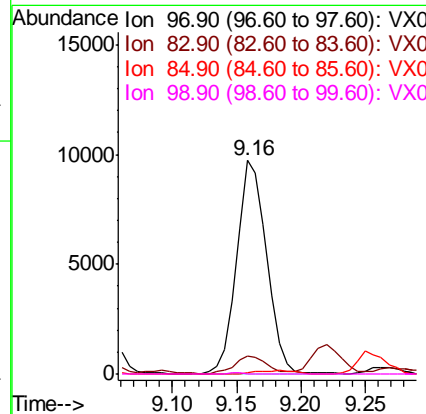
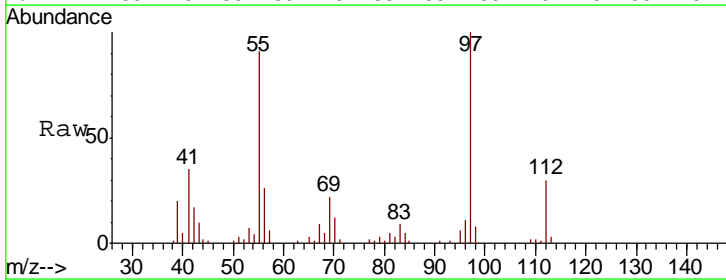
Instrument :
 MSVOA_X
 ClientSampled :

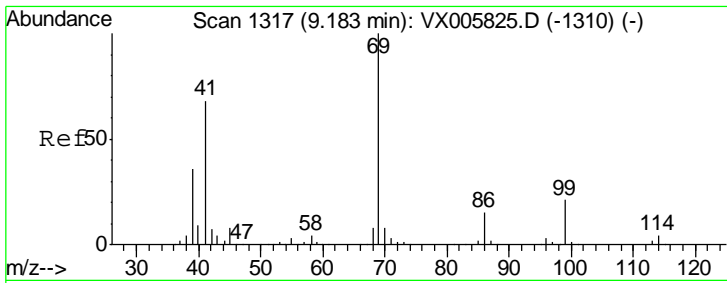
Tgt Ion	Resp	Lower	Upper
92	100		
91	168.6	140.4	210.6



#55
 1,1,2-Trichloroethane
 Concen: 10.490 ug/l
 RT: 9.16 min Scan# 1313
 Delta R.T. -0.06 min
 Lab File: VX006031.D
 Acq: 15 Nov 2018 20:13

Tgt Ion	Resp	Lower	Upper
97	100		
83	8.0	70.7	106.1#
85	0.6	45.8	68.6#
99	0.0	51.8	77.8#

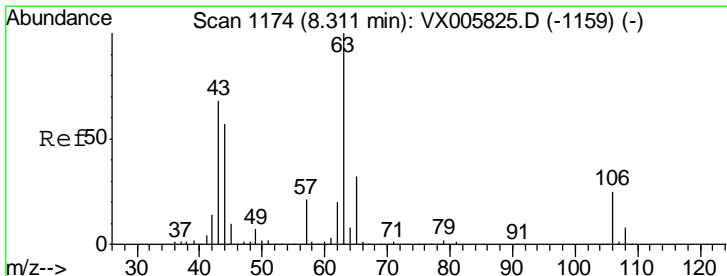
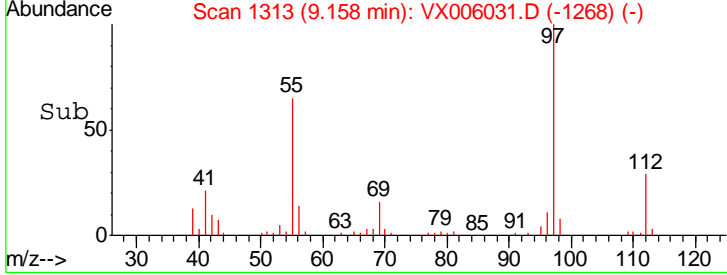
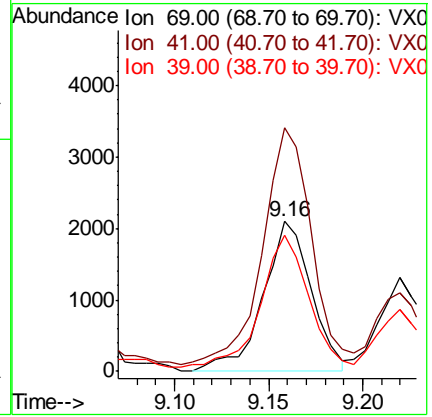
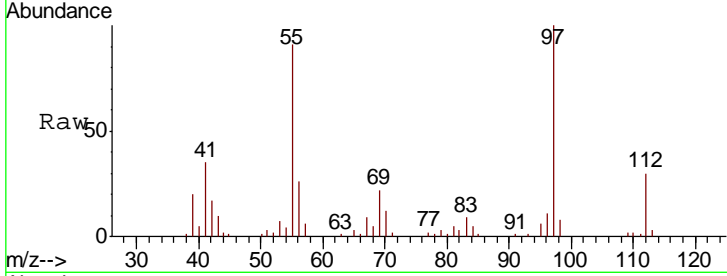




#56
 Ethyl methacrylate
 Concen: 1.657 ug/l
 RT: 9.16 min Scan# 1313
 Delta R.T. -0.02 min
 Lab File: VX006031.D
 Acq: 15 Nov 2018 20:13

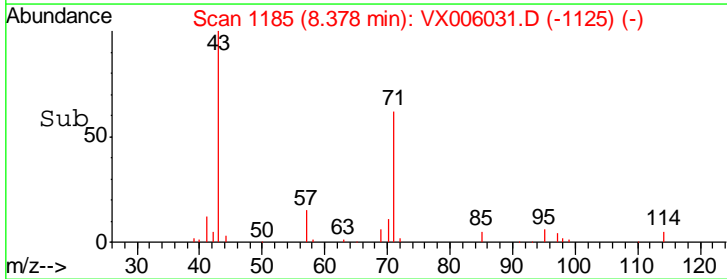
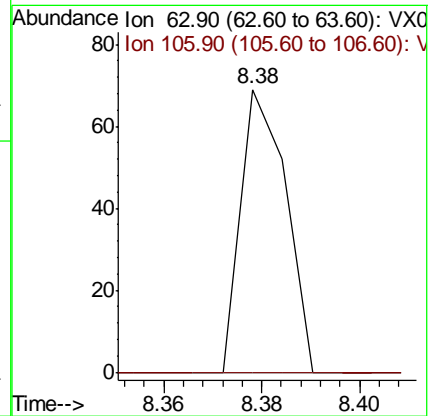
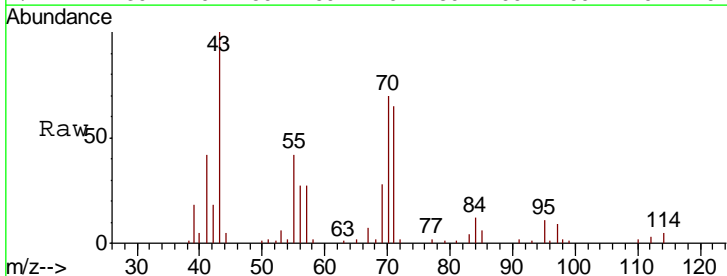
Instrument :
 MSVOA_X
 ClientSampled :

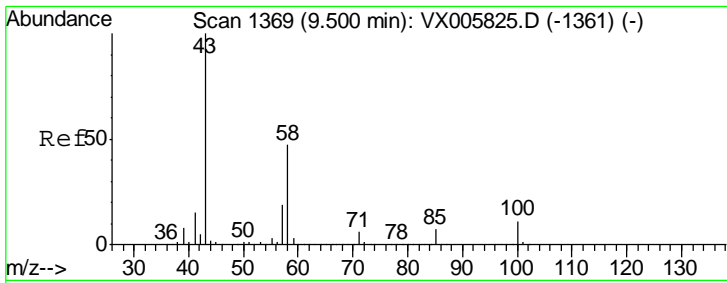
Tgt Ion	Resp	Lower	Upper
69	100		
41	159.3	57.0	85.6#
39	86.3	28.3	42.5#



#58
 2-Chloroethyl Vinyl ether
 Concen: 8.313 ug/l
 RT: 8.38 min Scan# 1185
 Delta R.T. 0.07 min
 Lab File: VX006031.D
 Acq: 15 Nov 2018 20:13

Tgt Ion	Resp	Lower	Upper
63	100		
106	0.0	21.3	31.9#

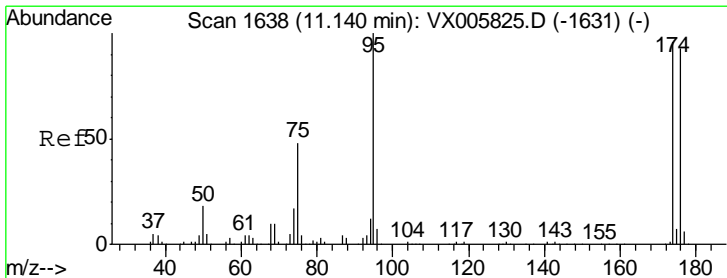
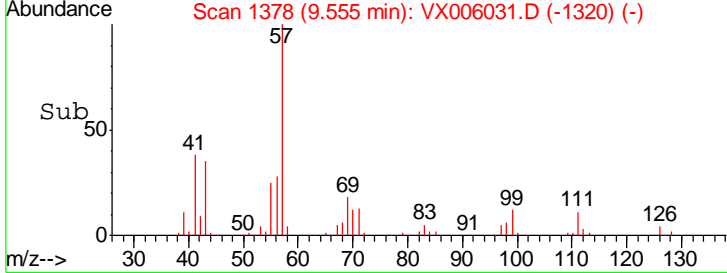
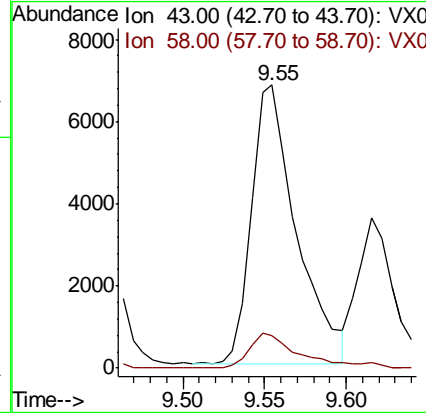
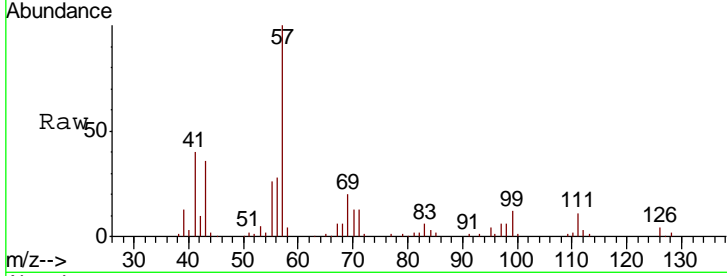




#59
 2-Hexanone
 Concen: 5.945 ug/l
 RT: 9.55 min Scan# 1378
 Delta R.T. 0.05 min
 Lab File: VX006031.D
 Acq: 15 Nov 2018 20:13

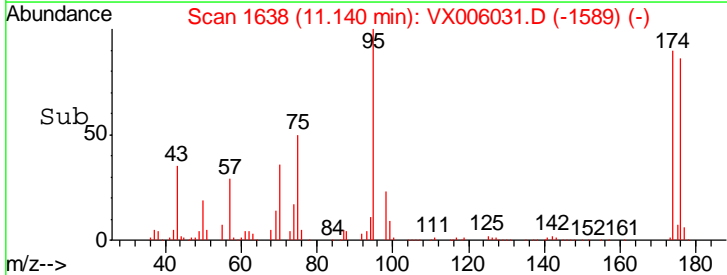
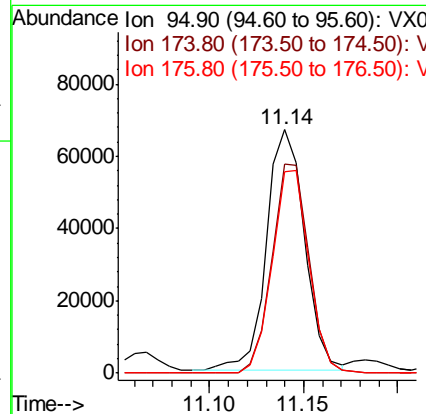
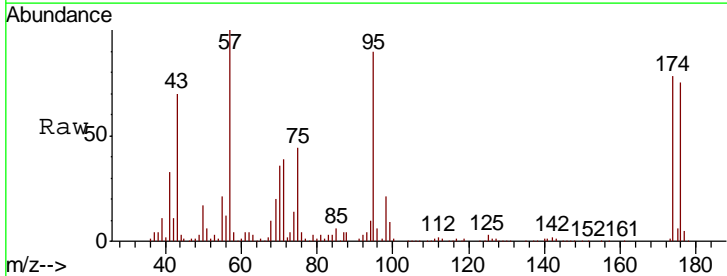
Instrument :
 MSVOA_X
 ClientSampled :

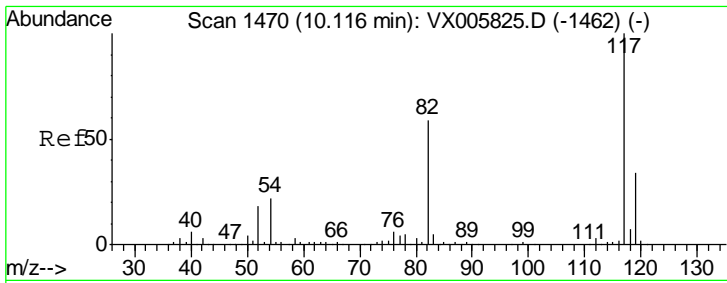
Tgt Ion	Resp	Lower	Upper
43	13044		
58	14.0	25.9	77.8#



#62
 4-Bromofluorobenzene
 Concen: 53.616 ug/l
 RT: 11.14 min Scan# 1638
 Delta R.T. -0.00 min
 Lab File: VX006031.D
 Acq: 15 Nov 2018 20:13

Tgt Ion	Resp	Lower	Upper
95	93727		
174	84.5	0.0	184.4
176	81.4	0.0	177.4

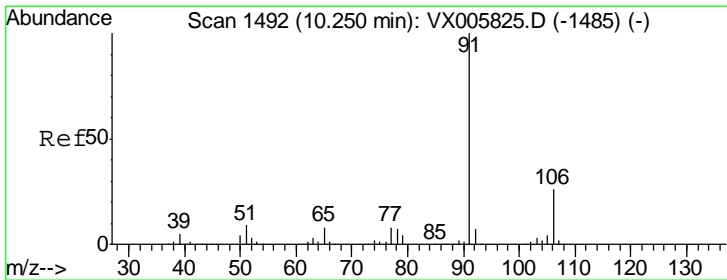
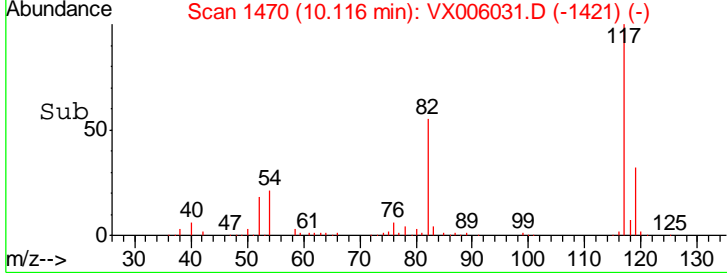
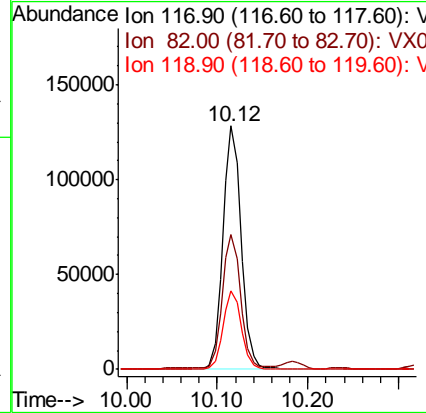
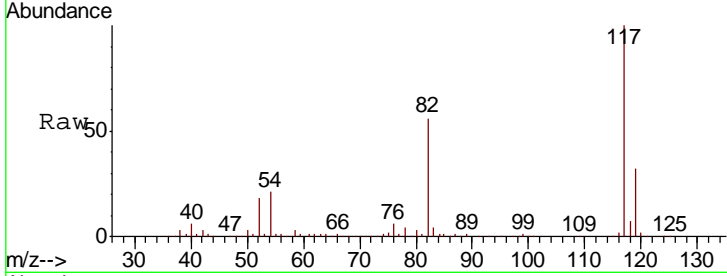




#63
 Chlorobenzene-d5
 Concen: 50.000 ug/l
 RT: 10.12 min Scan# 1470
 Delta R.T. -0.00 min
 Lab File: VX006031.D
 Acq: 15 Nov 2018 20:13

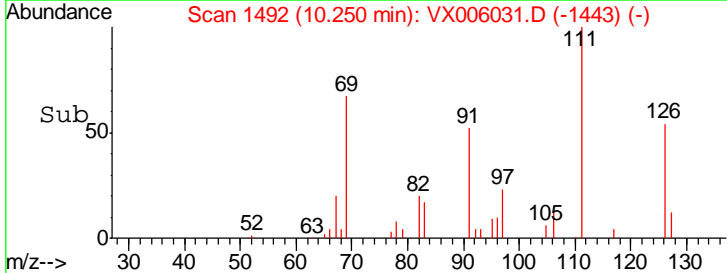
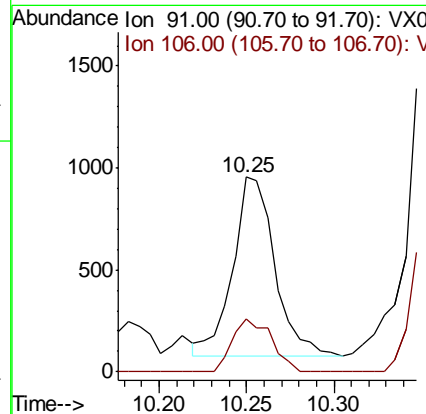
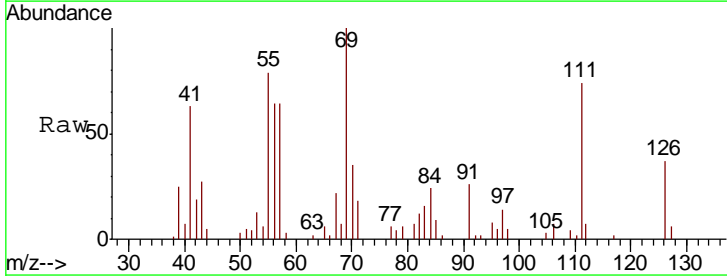
Instrument : MSVOA_X
 ClientSampled :

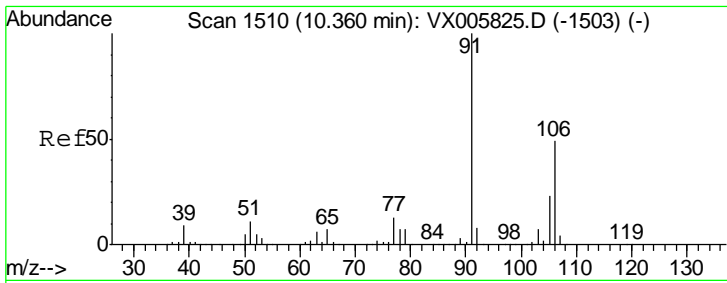
Tgt Ion	Resp	Lower	Upper
117	180652		
82	54.9	44.1	66.1
119	32.5	26.2	39.2



#67
 Ethyl Benzene
 Concen: 0.255 ug/l
 RT: 10.25 min Scan# 1492
 Delta R.T. -0.00 min
 Lab File: VX006031.D
 Acq: 15 Nov 2018 20:13

Tgt Ion	Resp	Lower	Upper
91	1478		
106	29.7	24.4	36.6

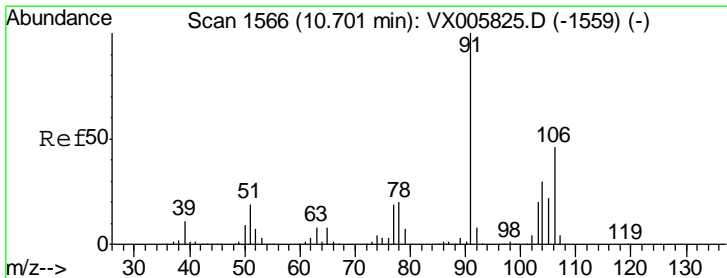
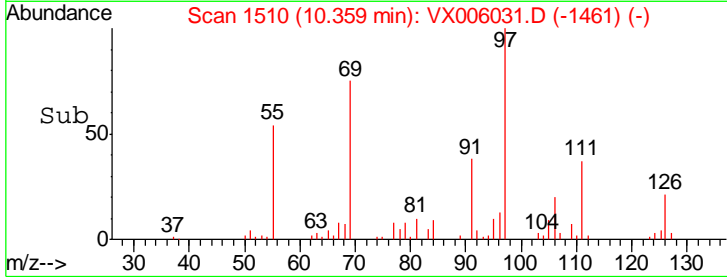
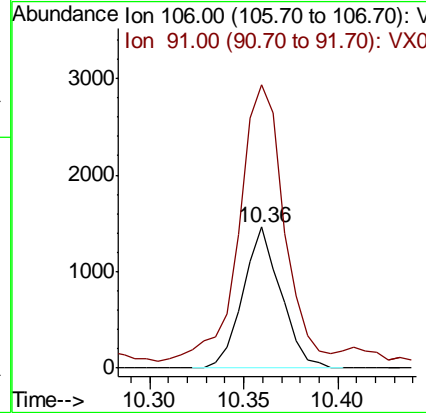
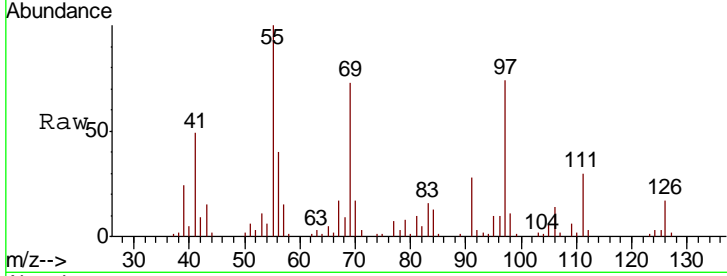




#68
 m/p-Xylenes
 Concen: 0.915 ug/l
 RT: 10.36 min Scan# 1510
 Delta R.T. -0.00 min
 Lab File: VX006031.D
 Acq: 15 Nov 2018 20:13

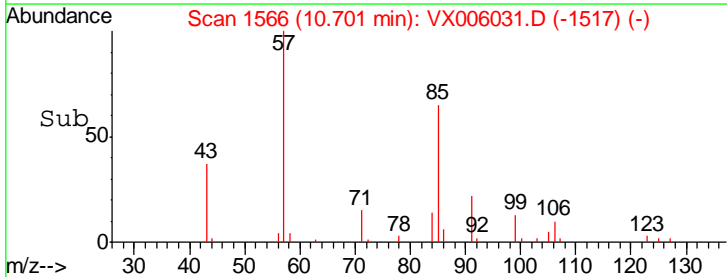
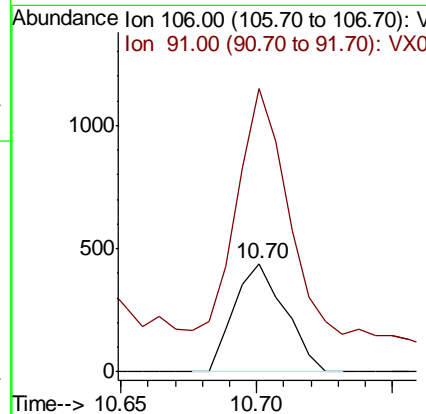
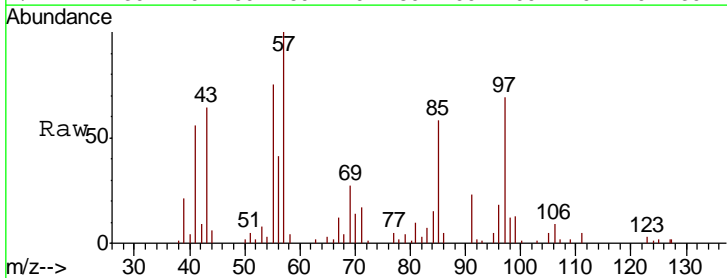
Instrument : MSVOA_X
 ClientSampled :

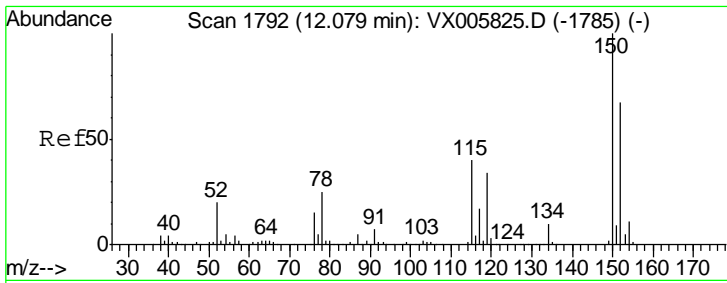
Tgt Ion:106 Resp: 2025
 Ion Ratio Lower Upper
 106 100
 91 245.4 164.2 246.4



#69
 o-Xylene
 Concen: 0.286 ug/l
 RT: 10.70 min Scan# 1566
 Delta R.T. -0.00 min
 Lab File: VX006031.D
 Acq: 15 Nov 2018 20:13

Tgt Ion:106 Resp: 568
 Ion Ratio Lower Upper
 106 100
 91 292.8 108.5 325.5

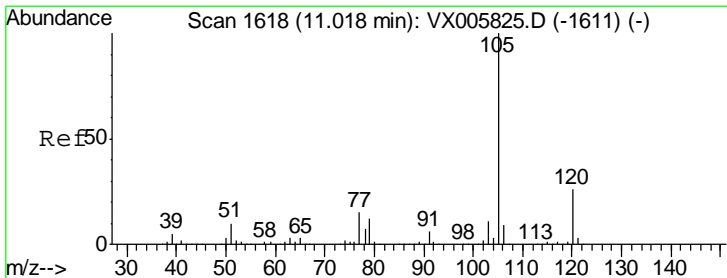
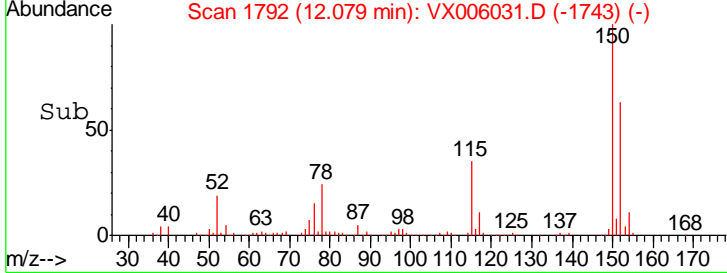
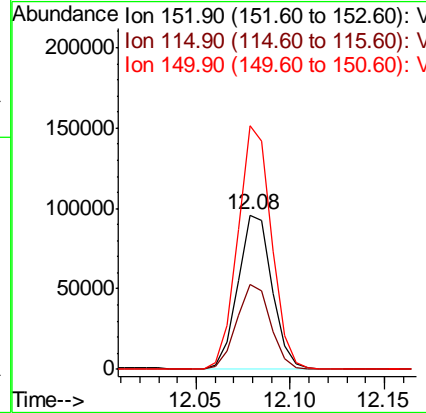
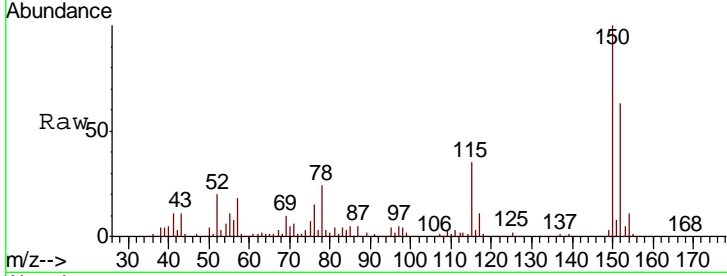




#72
 1,4-Dichlorobenzene-d4
 Concen: 50.000 ug/l
 RT: 12.08 min Scan# 1792
 Delta R.T. -0.00 min
 Lab File: VX006031.D
 Acq: 15 Nov 2018 20:13

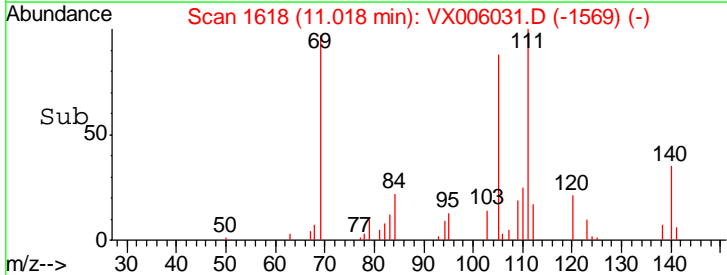
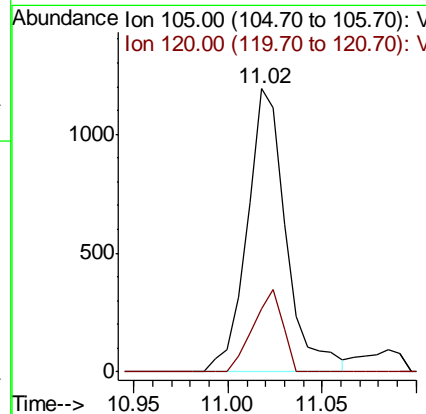
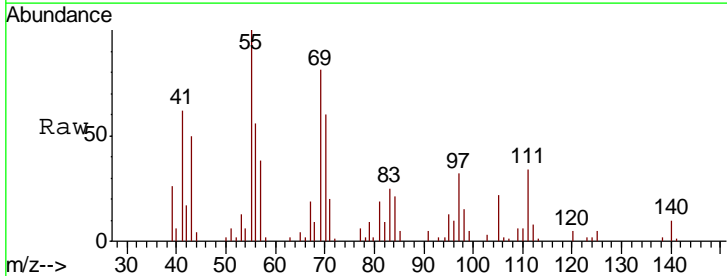
Instrument :
 MSVOA_X
 ClientSampled :

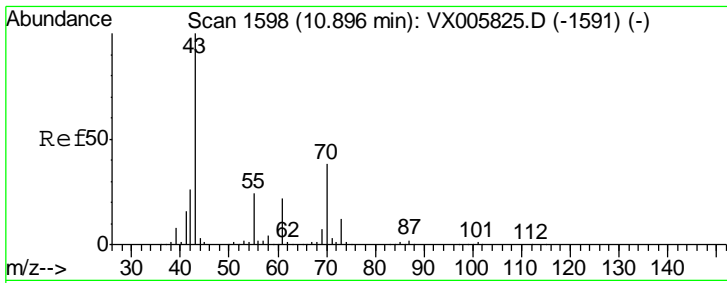
Tgt Ion	Resp	Lower	Upper
152	100		
115	55.3	39.4	118.1
150	156.1	0.0	346.4



#73
 Isopropylbenzene
 Concen: 0.245 ug/l
 RT: 11.02 min Scan# 1618
 Delta R.T. -0.00 min
 Lab File: VX006031.D
 Acq: 15 Nov 2018 20:13

Tgt Ion	Resp	Lower	Upper
105	100		
120	22.0	13.1	39.3

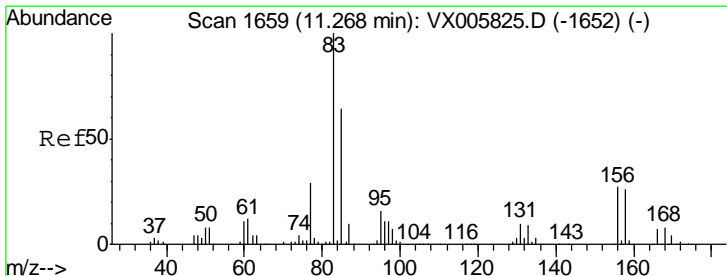
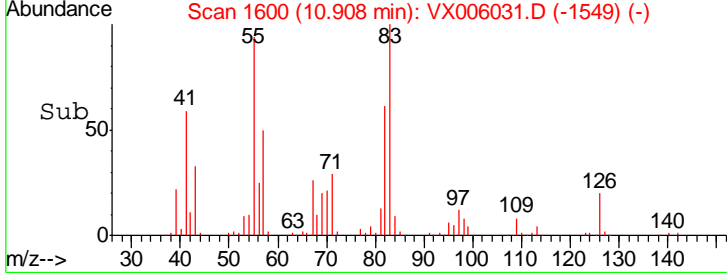
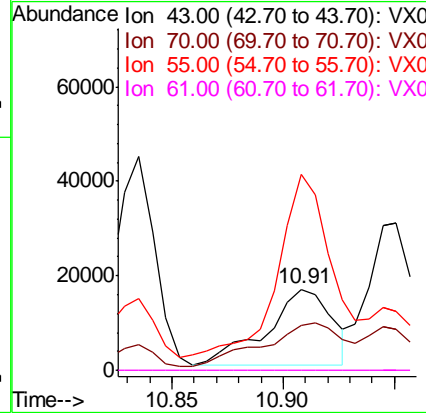
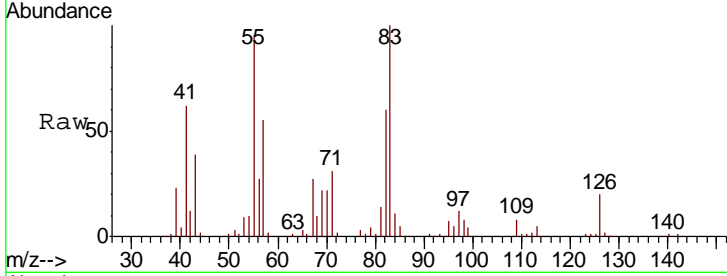




#74
 N-amyl acetate
 Concen: 9.325 ug/l
 RT: 10.91 min Scan# 1600
 Delta R.T. 0.01 min
 Lab File: VX006031.D
 Acq: 15 Nov 2018 20:13

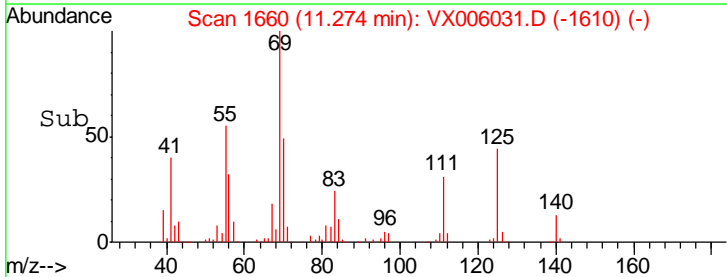
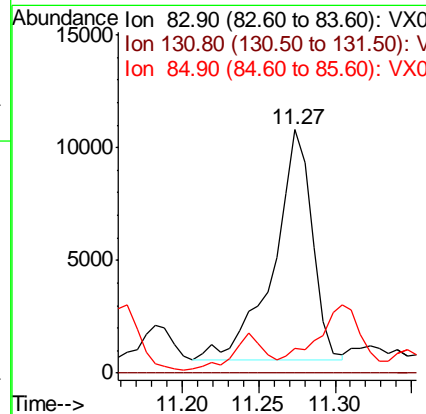
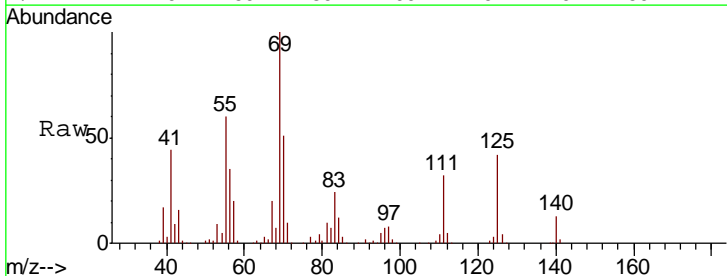
Instrument : MSVOA_X
 ClientSampled :

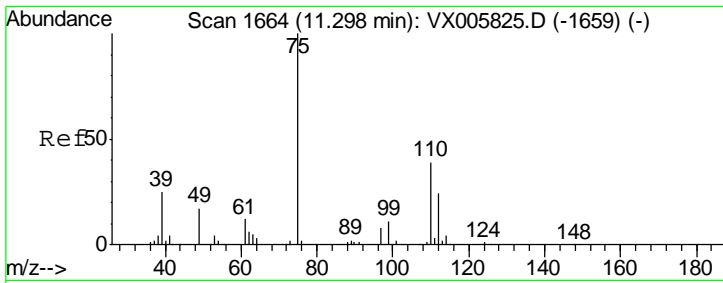
Tgt Ion	Resp	Lower	Upper
43	100		
70	72.0	31.6	47.4#
55	197.5	19.7	29.5#
61	0.0	18.3	27.5#



#75
 1,1,2,2-Tetrachloroethane
 Concen: 7.004 ug/l
 RT: 11.27 min Scan# 1660
 Delta R.T. 0.01 min
 Lab File: VX006031.D
 Acq: 15 Nov 2018 20:13

Tgt Ion	Resp	Lower	Upper
83	100		
131	0.0	5.3	15.9#
85	0.0	32.0	96.2#

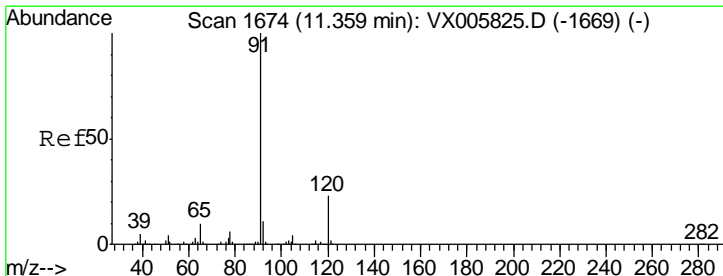
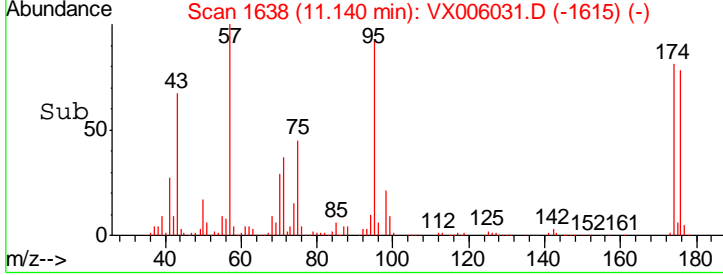
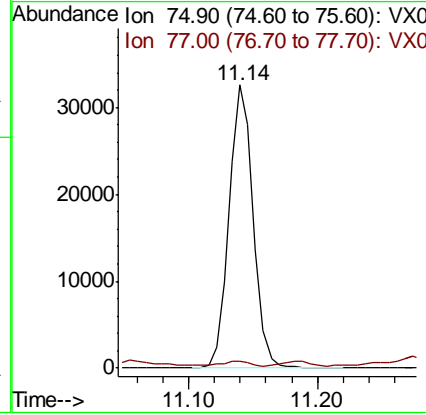
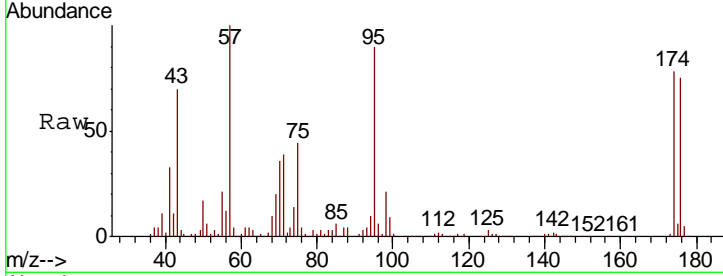




#76
 1,2,3-Trichloropropane
 Concen: 17.473 ug/l
 RT: 11.14 min Scan# 1638
 Delta R.T. -0.16 min
 Lab File: VX006031.D
 Acq: 15 Nov 2018 20:13

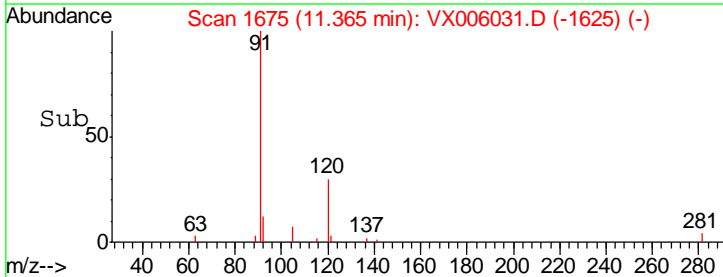
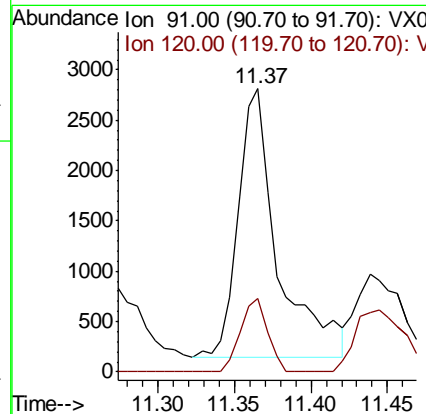
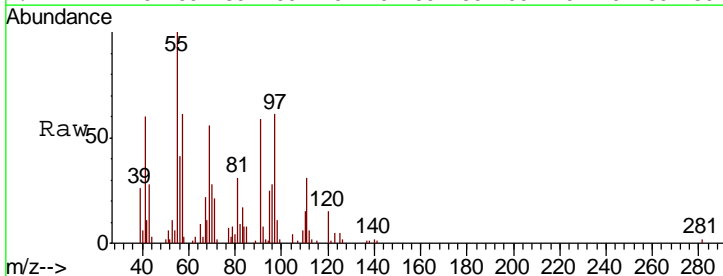
Instrument : MSVOA_X
 ClientSampled :

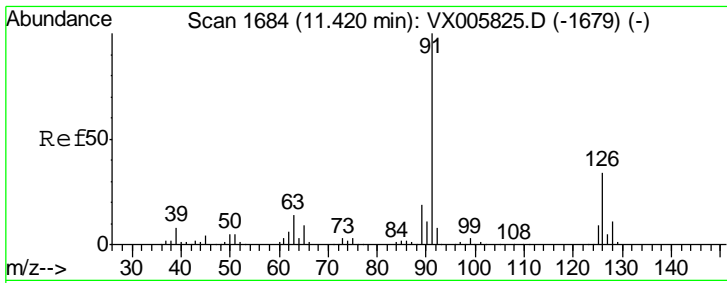
Tgt Ion: 75 Resp: 42868
 Ion Ratio Lower Upper
 75 100
 77 2.1 20.5 61.6#



#78
 n-propylbenzene
 Concen: 0.581 ug/l
 RT: 11.37 min Scan# 1675
 Delta R.T. 0.01 min
 Lab File: VX006031.D
 Acq: 15 Nov 2018 20:13

Tgt Ion: 91 Resp: 4767
 Ion Ratio Lower Upper
 91 100
 120 18.7 11.9 35.5

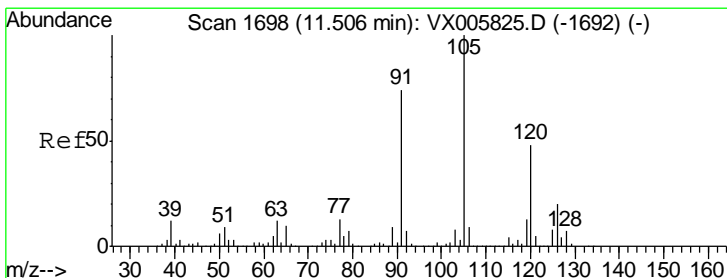
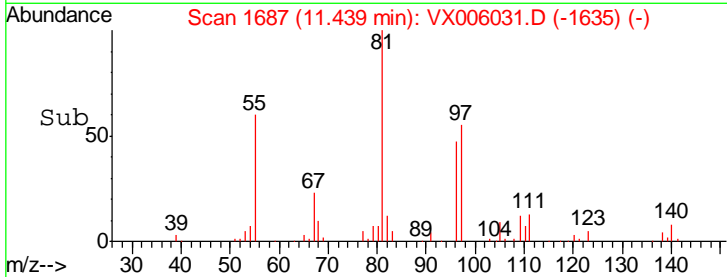
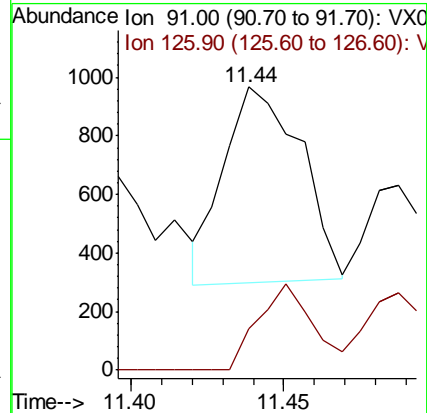
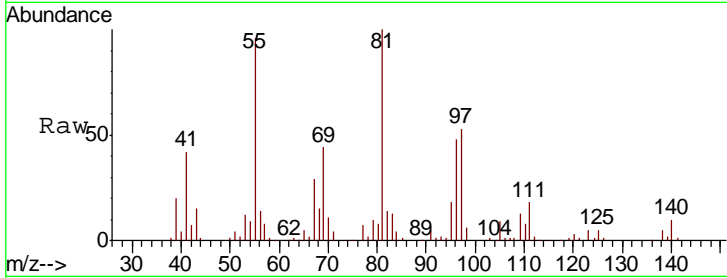




#79
 2-Chlorotoluene
 Concen: 0.234 ug/l
 RT: 11.44 min Scan# 1687
 Delta R.T. 0.02 min
 Lab File: VX006031.D
 Acq: 15 Nov 2018 20:13

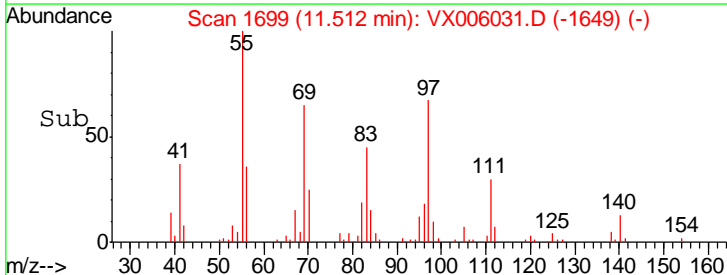
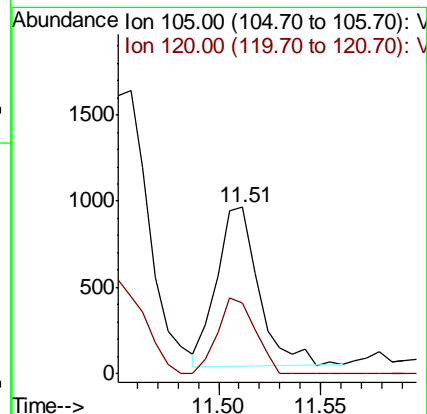
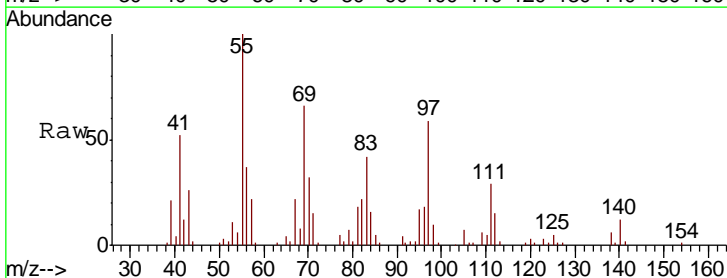
Instrument :
 MSVOA_X
 ClientSampled :

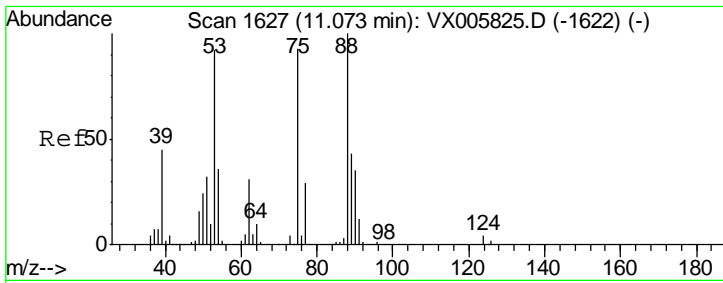
Tgt Ion: 91 Resp: 1162
 Ion Ratio Lower Upper
 91 100
 126 31.8 17.3 52.0



#80
 1,3,5-Trimethylbenzene
 Concen: 0.221 ug/l
 RT: 11.51 min Scan# 1699
 Delta R.T. 0.01 min
 Lab File: VX006031.D
 Acq: 15 Nov 2018 20:13

Tgt Ion: 105 Resp: 1308
 Ion Ratio Lower Upper
 105 100
 120 43.6 24.1 72.2

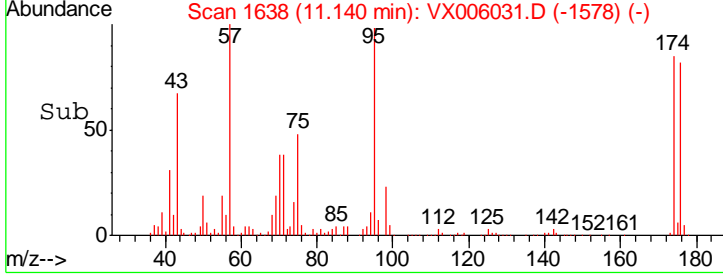
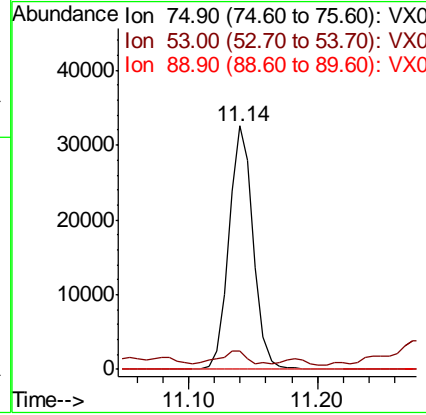
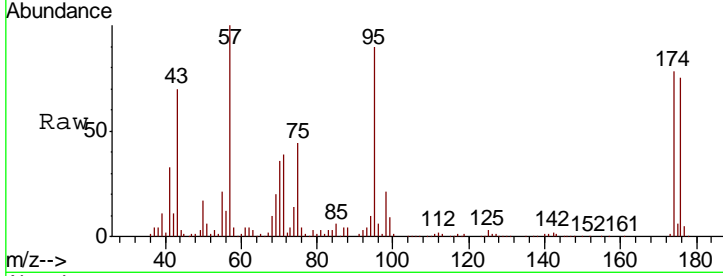




#81
 trans-1,4-Dichloro-2-butene
 Concen: 55.689 ug/l
 RT: 11.14 min Scan# 1638
 Delta R.T. 0.07 min
 Lab File: VX006031.D
 Acq: 15 Nov 2018 20:13

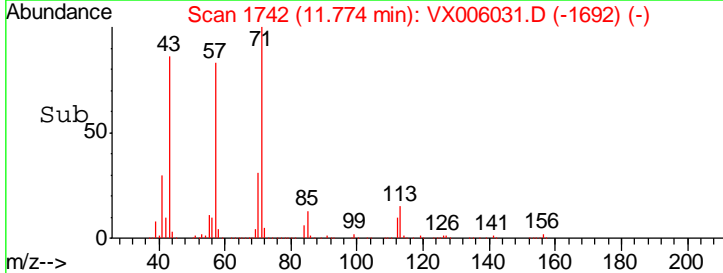
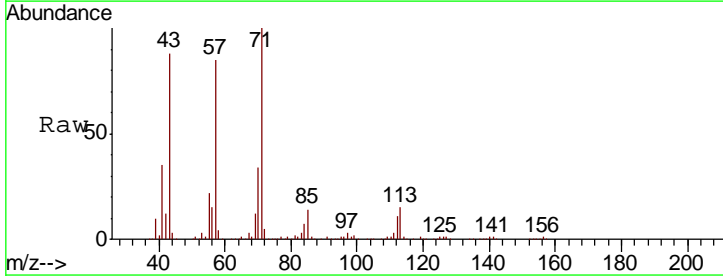
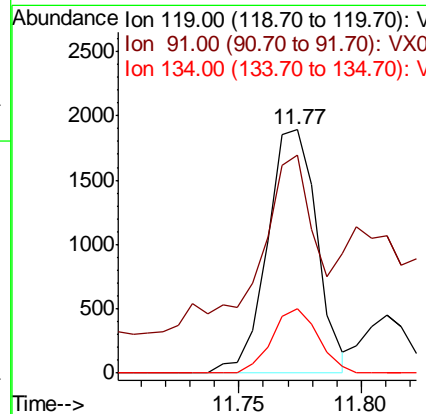
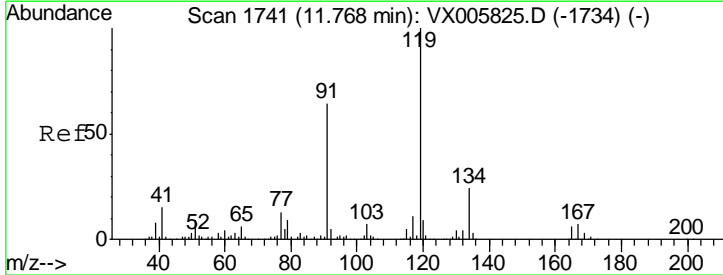
Instrument :
 MSVOA_X
 ClientSampled :

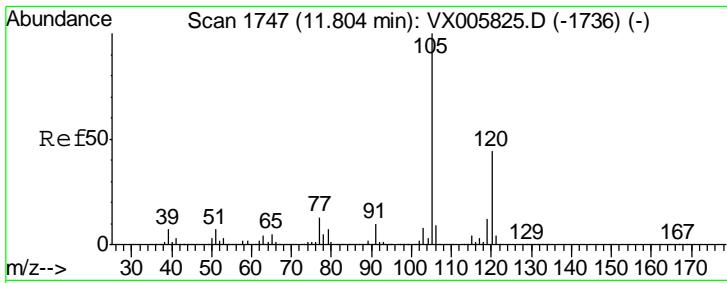
Tgt Ion	Resp	Lower	Upper
75	100		
53	5.9	80.2	120.2#
89	0.0	39.8	59.8#



#83
 tert-Butylbenzene
 Concen: 0.449 ug/l
 RT: 11.77 min Scan# 1742
 Delta R.T. 0.01 min
 Lab File: VX006031.D
 Acq: 15 Nov 2018 20:13

Tgt Ion	Resp	Lower	Upper
119	100		
91	82.5	28.5	85.5
134	24.7	11.3	33.8

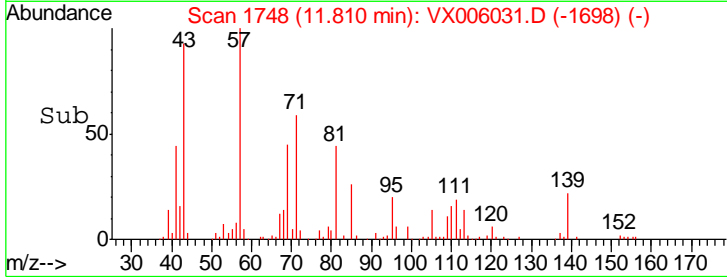
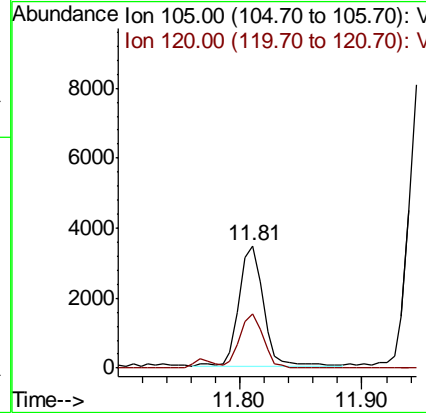
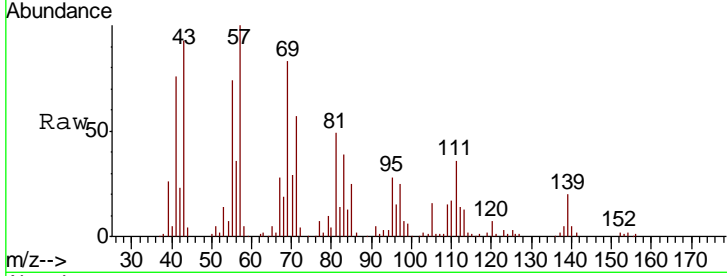




#84
 1,2,4-Trimethylbenzene
 Concen: 0.604 ug/l
 RT: 11.81 min Scan# 1748
 Delta R.T. 0.01 min
 Lab File: VX006031.D
 Acq: 15 Nov 2018 20:13

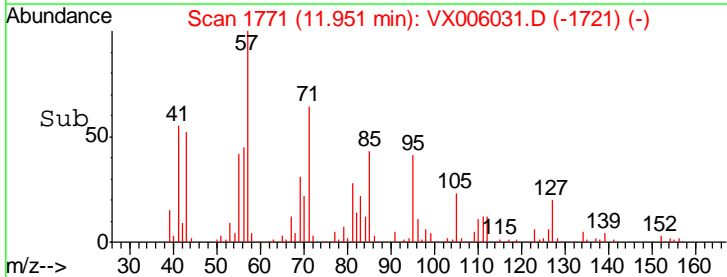
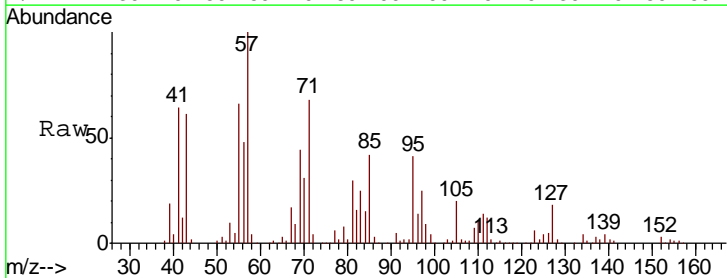
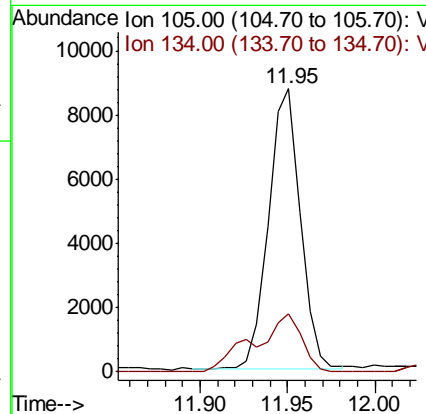
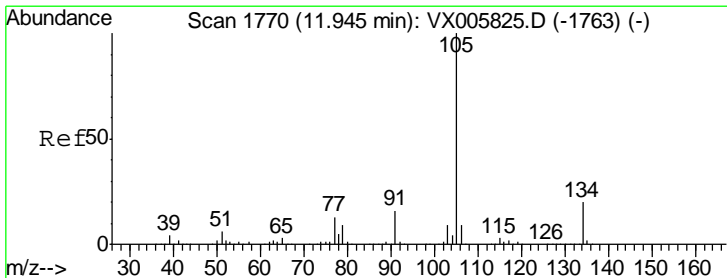
Instrument : MSVOA_X
 ClientSampled :

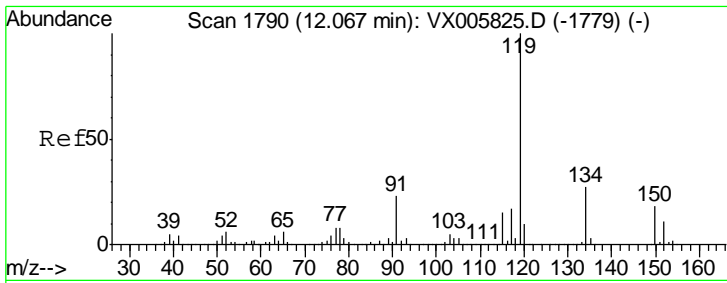
Tgt Ion:105 Resp: 4721
 Ion Ratio Lower Upper
 105 100
 120 43.1 22.4 67.0



#85
 sec-Butylbenzene
 Concen: 1.515 ug/l
 RT: 11.95 min Scan# 1771
 Delta R.T. 0.01 min
 Lab File: VX006031.D
 Acq: 15 Nov 2018 20:13

Tgt Ion:105 Resp: 11098
 Ion Ratio Lower Upper
 105 100
 134 30.7 10.2 30.4#

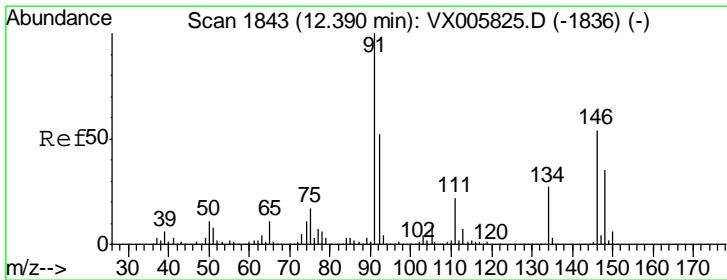
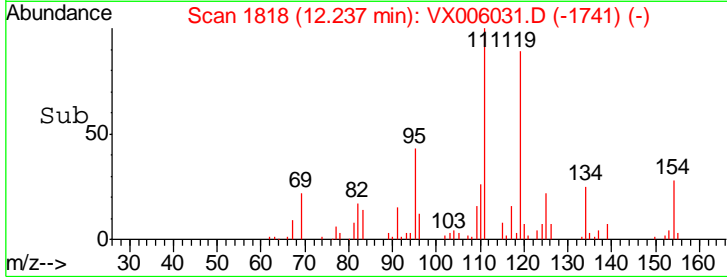
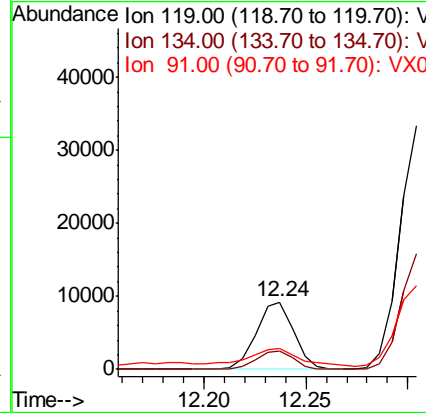
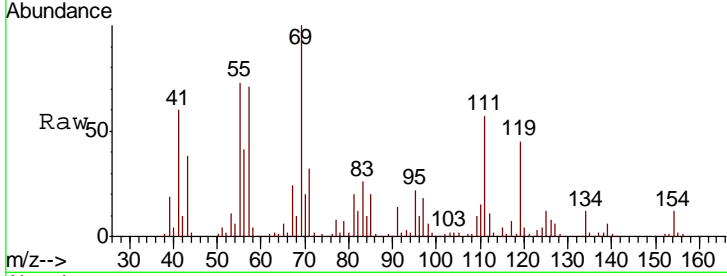




#86
 p-Isopropyltoluene
 Concen: 1.809 ug/l
 RT: 12.24 min Scan# 1818
 Delta R.T. 0.17 min
 Lab File: VX006031.D
 Acq: 15 Nov 2018 20:13

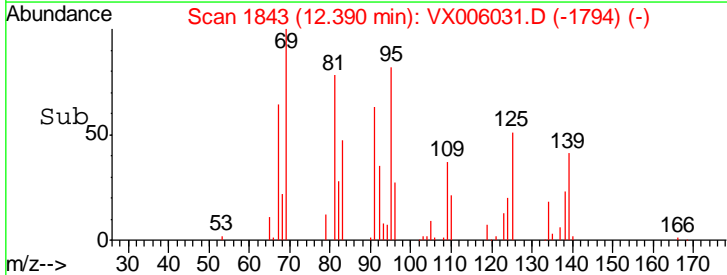
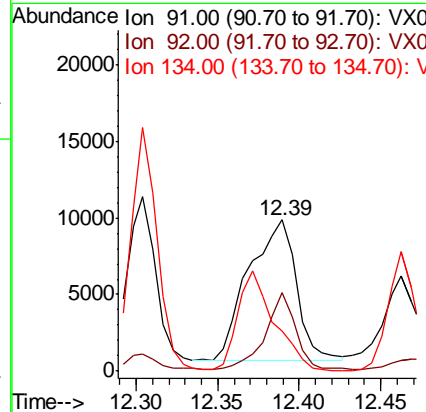
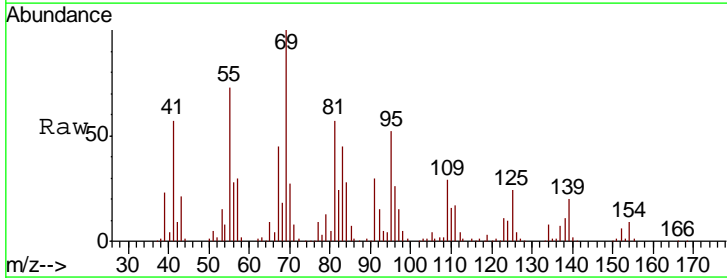
Instrument : MSVOA_X
 ClientSampled :

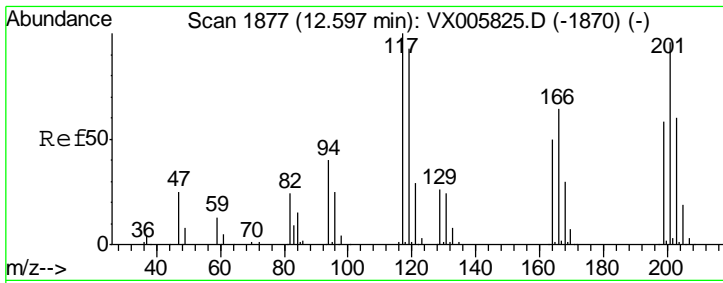
Tgt Ion	Resp	Lower	Upper
119	11739		
134	27.3	13.0	39.0
91	34.9	11.4	34.2#



#89
 n-Butylbenzene
 Concen: 3.089 ug/l
 RT: 12.39 min Scan# 1843
 Delta R.T. -0.00 min
 Lab File: VX006031.D
 Acq: 15 Nov 2018 20:13

Tgt Ion	Resp	Lower	Upper
91	18575		
92	34.8	26.1	78.2
134	54.6	13.1	39.3#

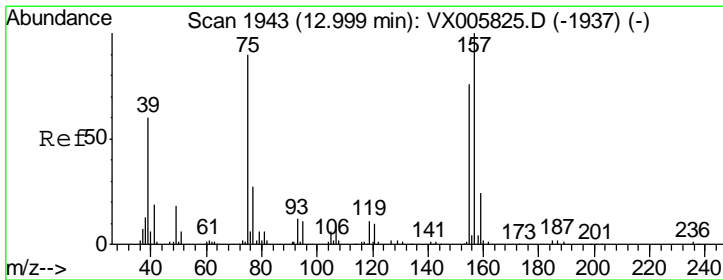
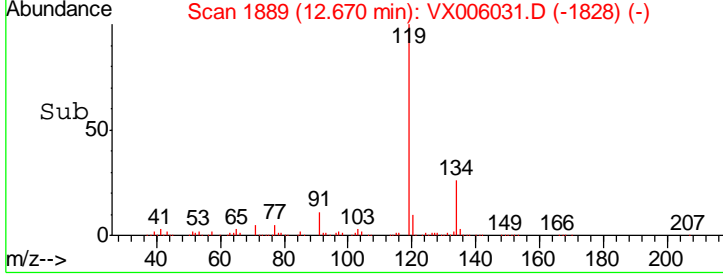
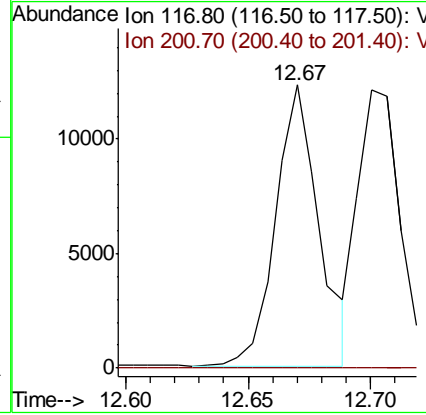
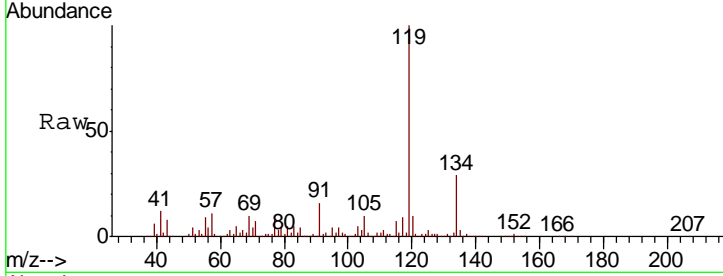




#90
 Hexachloroethane
 Concen: 13.899 ug/l
 RT: 12.67 min Scan# 1889
 Delta R.T. 0.07 min
 Lab File: VX006031.D
 Acq: 15 Nov 2018 20:13

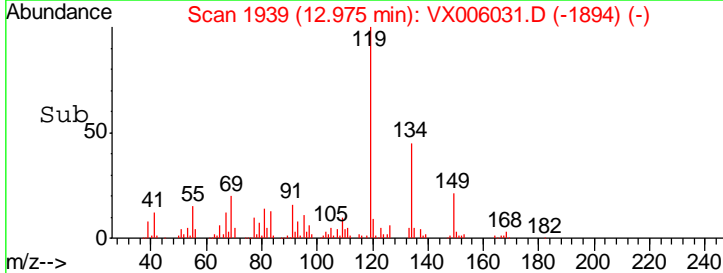
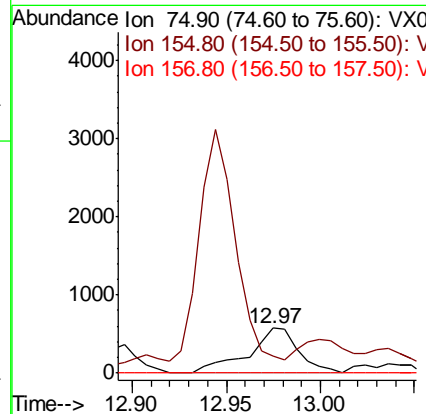
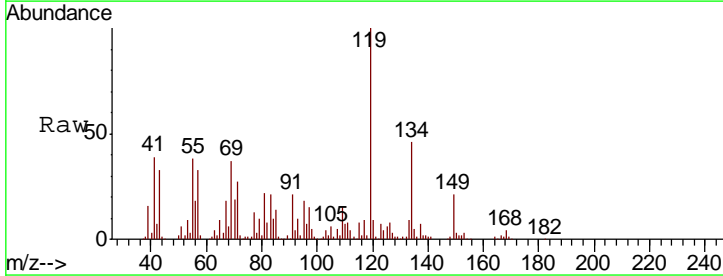
Instrument : MSVOA_X
 ClientSampled :

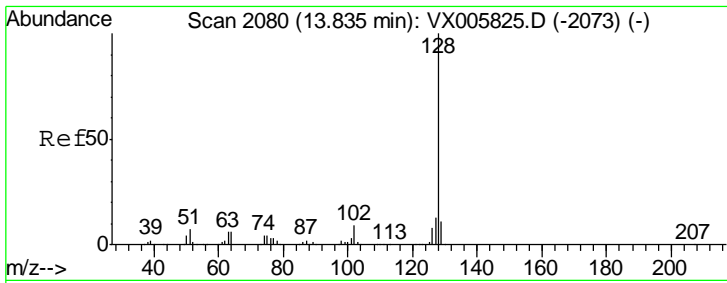
Tgt Ion	Resp	Lower	Upper
117	15057	100	
201		0.0	47.9
			143.6#



#92
 1,2-Dibromo-3-Chloropropane
 Concen: 1.721 ug/l
 RT: 12.97 min Scan# 1939
 Delta R.T. -0.02 min
 Lab File: VX006031.D
 Acq: 15 Nov 2018 20:13

Tgt Ion	Resp	Lower	Upper
75	1074	100	
155		0.0	45.4
			136.1#
157		0.0	57.4
			172.0#

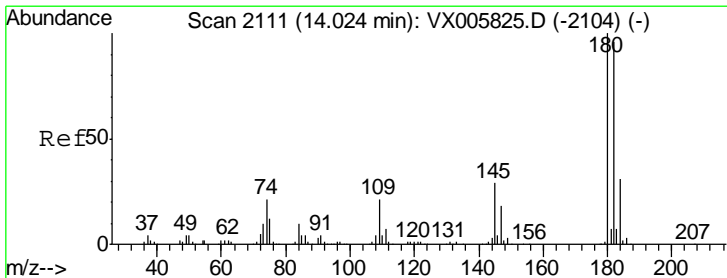
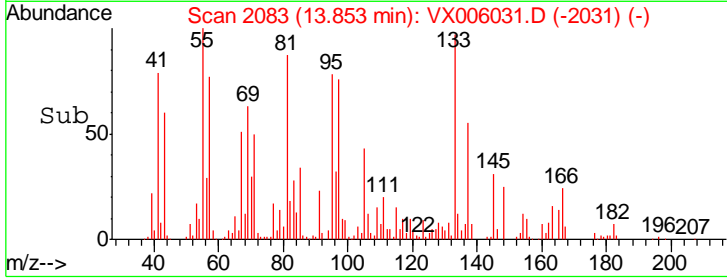
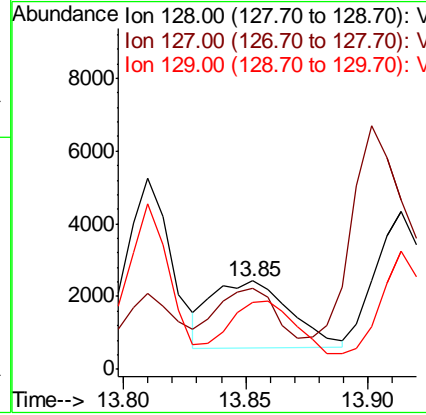
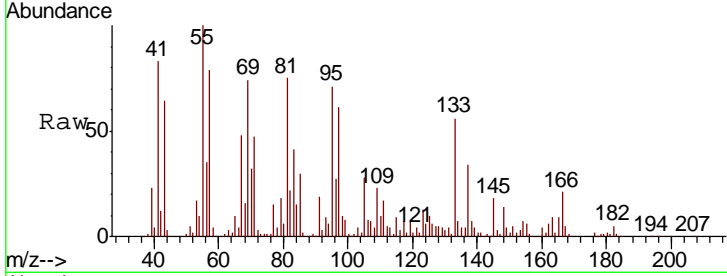




#95
 Naphthalene
 Concen: 1.636 ug/l
 RT: 13.85 min Scan# 2083
 Delta R.T. 0.02 min
 Lab File: VX006031.D
 Acq: 15 Nov 2018 20:13

Instrument :
 MSVOA_X
 ClientSampled :

Tgt Ion	Resp	Lower	Upper
128	100		
127	59.3	10.4	15.6#
129	61.6	8.7	13.1#



#96
 1,2,3-Trichlorobenzene
 Concen: 1.406 ug/l
 RT: 14.04 min Scan# 2113
 Delta R.T. 0.01 min
 Lab File: VX006031.D
 Acq: 15 Nov 2018 20:13

Tgt Ion	Resp	Lower	Upper
180	100		
182	34.8	48.0	144.2#
145	631.5	15.1	45.3#

