

Data Path : Z:\VOASRV\HPCHEM1\MSVOA X\DATA\VX111518\  
 Data File : VX006032.D  
 Acq On : 15 Nov 2018 20:40  
 Operator : JC/MD  
 Sample : J5911-06  
 Misc : 5.07µ/10mL/100uL/5.00mL/MSVOA\_X/MEOH  
 ALS Vial : 17 Sample Multiplier: 1

Instrument :  
 MSVOA\_X  
 ClientSampled :

Quant Time: Nov 16 00:20:33 2018  
 Quant Method : Z:\VOASRV\HPCHEM1\MSVOA\_X\METHOD\82X110718W.M  
 Quant Title : SW846 8260  
 QLast Update : Wed Nov 07 14:40:53 2018  
 Response via : Initial Calibration

Internal Standards	R.T.	QIon	Response	Conc	Units	Dev(Min)
1) Pentafluorobenzene	5.65	168	157144	50.00	µg/l	0.00
34) 1,4-Difluorobenzene	6.85	114	225050	50.00	µg/l	0.00
63) Chlorobenzene-d5	10.12	117	189085	50.00	µg/l	0.00
72) 1,4-Dichlorobenzene-d4	12.08	152	129442	50.00	µg/l	0.00

## System Monitoring Compounds

33) 1,2-Dichloroethane-d4	6.06	65	87662	48.52	µg/l	0.00
Spiked Amount	50.000		Recovery	=	97.04%	
35) Dibromofluoromethane	5.51	113	70380	45.98	µg/l	0.00
Spiked Amount	50.000		Recovery	=	91.96%	
50) Toluene-d8	8.71	98	253095	49.74	µg/l	0.00
Spiked Amount	50.000		Recovery	=	99.48%	
62) 4-Bromofluorobenzene	11.14	95	93429	51.06	µg/l	0.00
Spiked Amount	50.000		Recovery	=	102.12%	

## Target Compounds

					Qvalue	
5) Bromomethane	1.64	94	470	0.411	µg/l	97
13) Acrolein	2.21	56	19	19.235	µg/l #	1
18) Methyl Acetate	2.80	43	847	Below Cal	#	55
20) Methylene Chloride	2.84	84	915	0.573	µg/l #	83
29) Tetrahydrofuran	5.19	42	521	0.531	µg/l #	77
30) Chloroform	5.22	83	3375	1.207	µg/l	99
31) Cyclohexane	5.56	56	4637	1.842	µg/l #	90
36) 1,1-Dichloropropene	5.65	75	10729	4.945	µg/l #	49
38) Carbon Tetrachloride	5.66	117	13856	6.380	µg/l #	17
39) Methylcyclohexane	7.45	83	20464	9.307	µg/l	92
41) Methacrylonitrile	5.20	41	714	0.463	µg/l #	49
47) Bromodichloromethane	7.91	83	445	0.244	µg/l #	82
48) Methyl methacrylate	7.73	41	1592	0.858	µg/l #	64
51) 4-Methyl-2-Pentanone	8.66	43	1542	0.592	µg/l #	38
55) 1,1,2-Trichloroethane	9.16	97	5075	3.221	µg/l #	19
56) Ethyl methacrylate	9.16	69	1392	0.591	µg/l #	1
59) 2-Hexanone	9.44	43	11331	4.934	µg/l #	30
68) m/p-Xylenes	10.36	106	1469	0.634	µg/l	99
73) Isopropylbenzene	11.02	105	3174	0.424	µg/l	96
74) N-amyl acetate	10.91	43	6337	2.722	µg/l #	1
75) 1,1,2,2-Tetrachloroethane	11.27	83	3544	1.290	µg/l #	26
76) 1,2,3-Trichloropropane	11.14	75	45267	17.174	µg/l #	37
78) n-propylbenzene	11.36	91	8591	0.974	µg/l	98
80) 1,3,5-Trimethylbenzene	11.51	105	1517	0.238	µg/l	84
81) trans-1,4-Dichloro-2-buten	11.14	75	45267	54.738	µg/l #	10
84) 1,2,4-Trimethylbenzene	11.81	105	3312	0.353	µg/l	96
85) sec-Butylbenzene	11.94	105	7341	0.933	µg/l #	70
86) p-Isopropyltoluene	12.07	119	3908	0.561	µg/l #	81
89) n-Butylbenzene	12.39	91	10079	1.560	µg/l #	72
90) Hexachloroethane	12.59	117	804	0.691	µg/l #	11
92) 1,2-Dibromo-3-Chloropropan	12.98	75	271	0.404	µg/l #	10
95) Naphthalene	13.84	128	1307	1.314	µg/l #	11
96) 1,2,3-Trichlorobenzene	14.03	180	898	0.309	µg/l #	1

Data Path : Z:\VOASRV\HPCHEM1\MSVOA X\DATA\VX111518\  
 Data File : VX006032.D  
 Acq On : 15 Nov 2018 20:40  
 Operator : JC/MD  
 Sample : J5911-06  
 Misc : 5.07µ/10mL/100uL/5.00mL/MSVOA\_X/MEOH  
 ALS Vial : 17 Sample Multiplier: 1

Instrument :  
 MSVOA\_X  
 ClientSampleId :

Quant Time: Nov 16 00:20:33 2018  
 Quant Method : Z:\VOASRV\HPCHEM1\MSVOA\_X\METHOD\82X110718W.M  
 Quant Title : SW846 8260  
 QLast Update : Wed Nov 07 14:40:53 2018  
 Response via : Initial Calibration

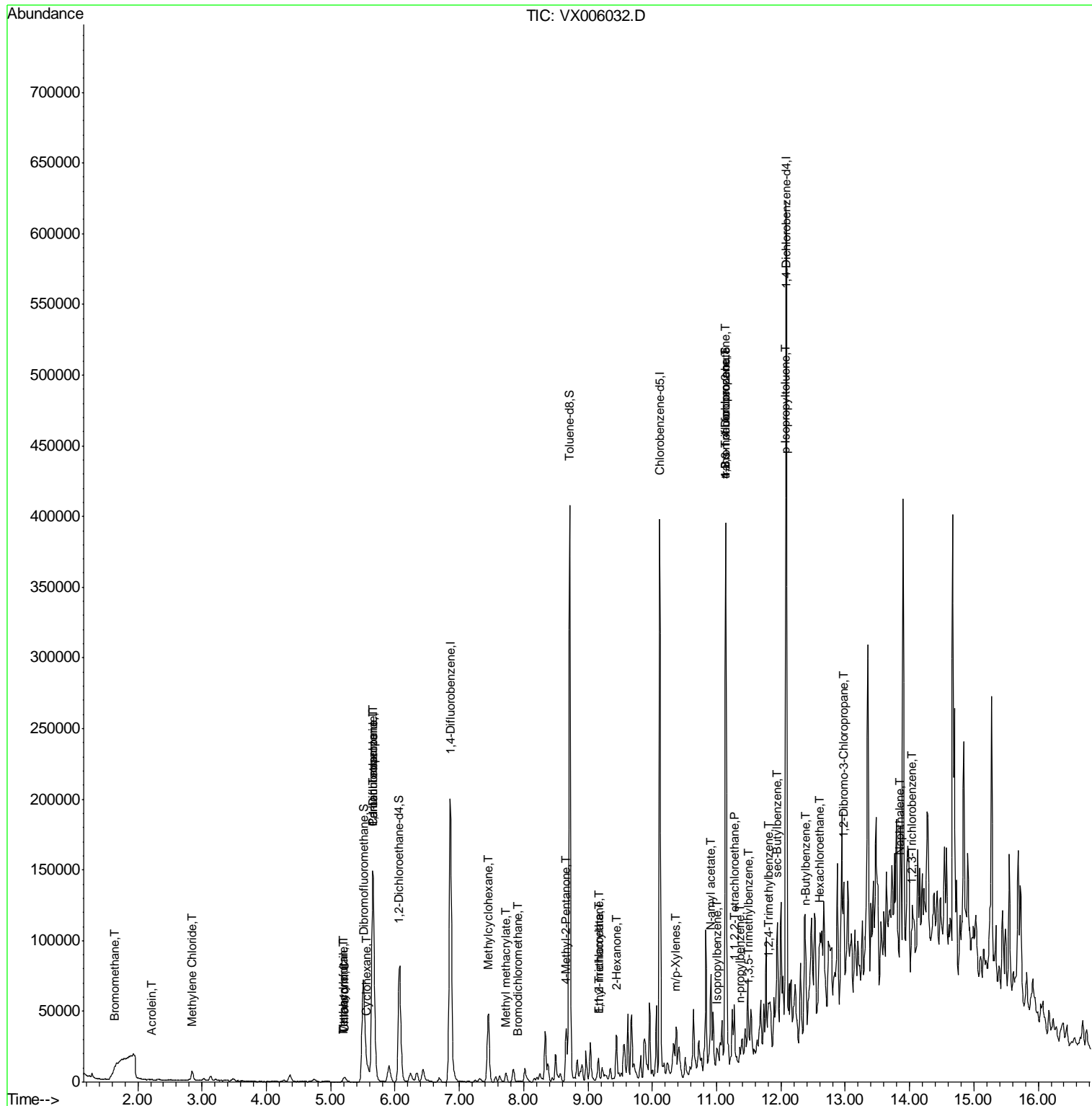
Internal Standards	R.T.	QIon	Response	Conc	Units	Dev(Min)
--------------------	------	------	----------	------	-------	----------

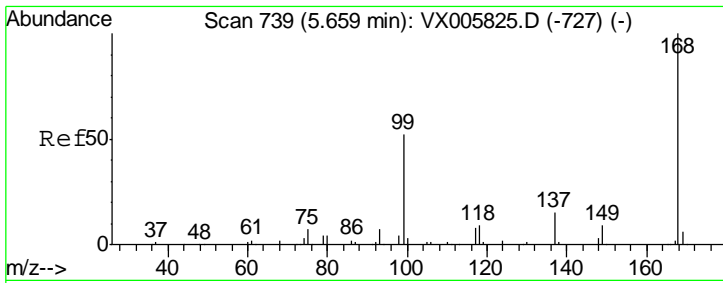
(#) = qualifier out of range (m) = manual integration (+) = signals summed

Data Path : Z:\VOASRV\HPCHEM1\MSVOA X\DATA\VX111518\  
 Data File : VX006032.D  
 Acq On : 15 Nov 2018 20:40  
 Operator : JC/MD  
 Sample : J5911-06  
 Misc : 5.07µ/10mL/100uL/5.00mL/MSVOA\_X/MEOH  
 ALS Vial : 17 Sample Multiplier: 1

Instrument :  
 MSVOA\_X  
 Client Sampled :

Quant Time: Nov 16 00:20:33 2018  
 Quant Method : Z:\VOASRV\HPCHEM1\MSVOA\_X\METHOD\82X110718W.M  
 Quant Title : SW846 8260  
 QLast Update : Wed Nov 07 14:40:53 2018  
 Response via : Initial Calibration

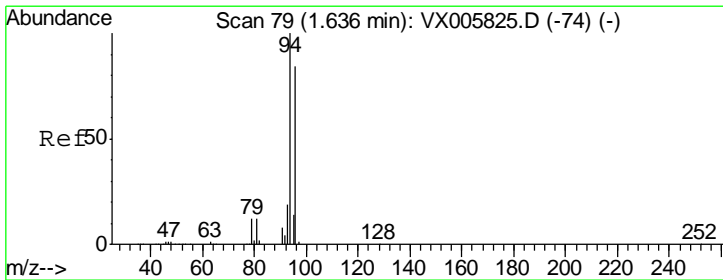
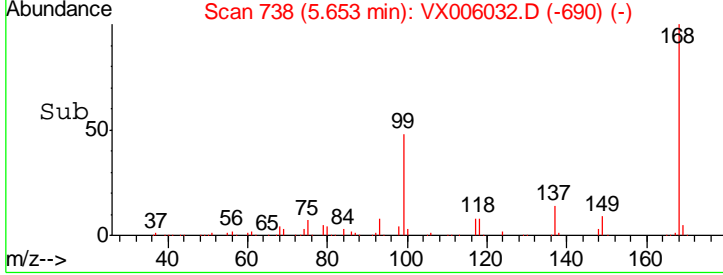
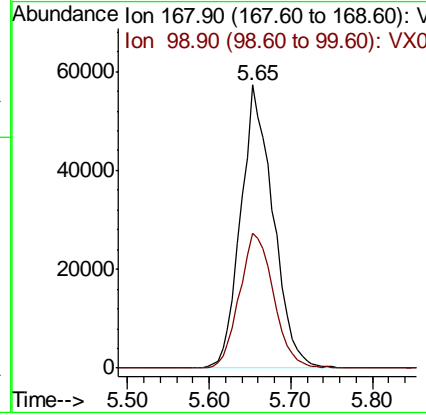
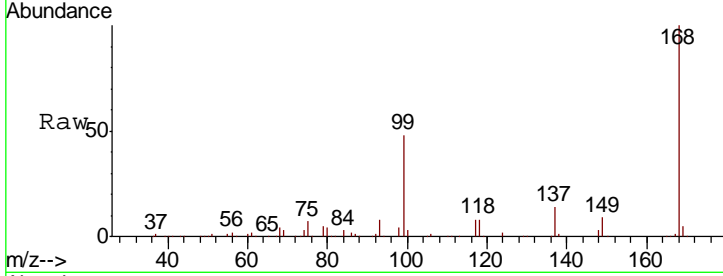




#1  
 Pentafluorobenzene  
 Concen: 50.000 ug/l  
 RT: 5.65 min Scan# 738  
 Delta R.T. -0.01 min  
 Lab File: VX006032.D  
 Acq: 15 Nov 2018 20:40

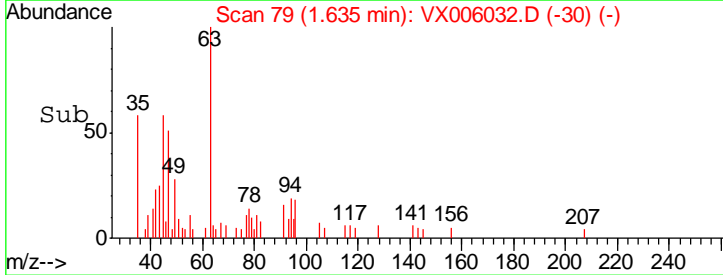
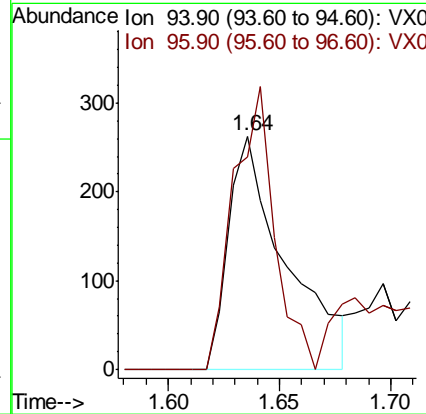
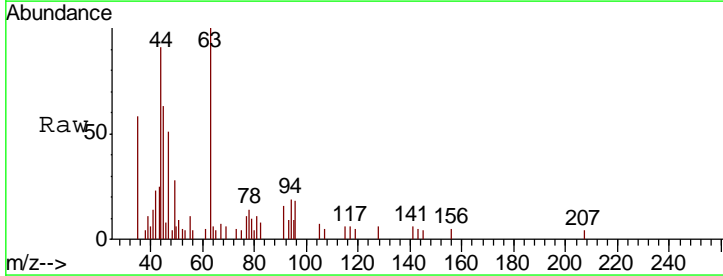
Instrument :  
 MSVOA\_X  
 ClientSampled :

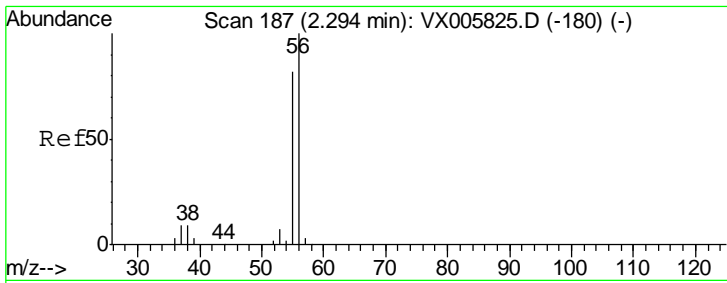
Tgt Ion: 168 Resp: 157144  
 Ion Ratio Lower Upper  
 168 100  
 99 47.8 40.7 61.1



#5  
 Bromomethane  
 Concen: 0.411 ug/l  
 RT: 1.64 min Scan# 79  
 Delta R.T. -0.00 min  
 Lab File: VX006032.D  
 Acq: 15 Nov 2018 20:40

Tgt Ion: 94 Resp: 470  
 Ion Ratio Lower Upper  
 94 100  
 96 91.3 75.2 112.8

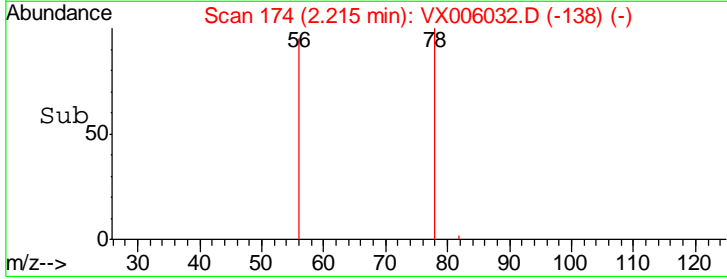
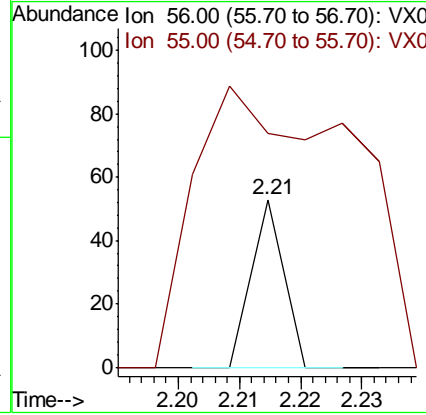
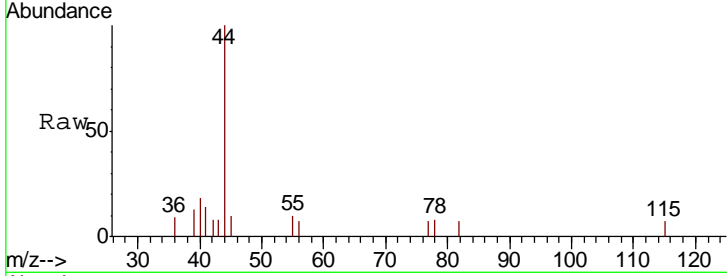




#13  
 Acrolein  
 Concen: 19.235 ug/l  
 RT: 2.21 min Scan# 174  
 Delta R.T. -0.08 min  
 Lab File: VX006032.D  
 Acq: 15 Nov 2018 20:40

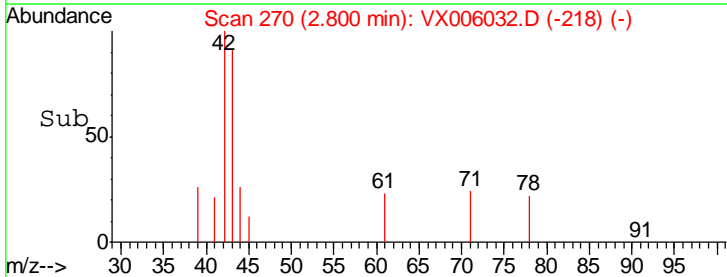
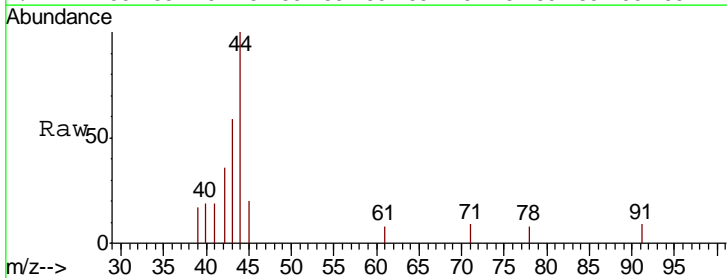
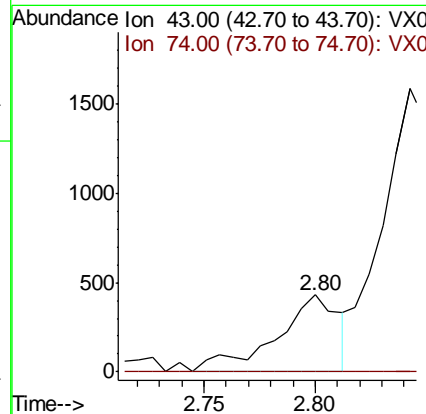
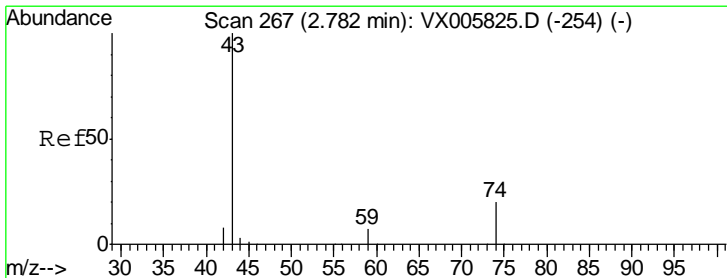
Instrument :  
 MSVOA\_X  
 ClientSampled :

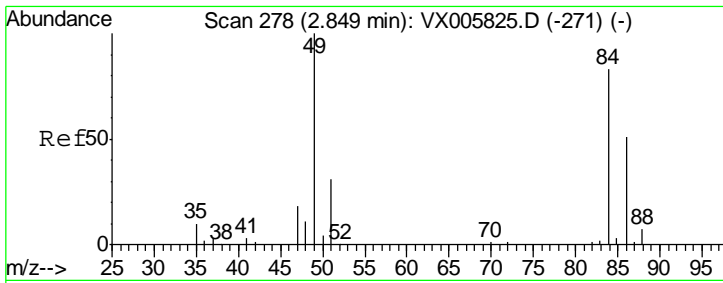
Tgt Ion	Resp	Lower	Upper
56	100		
55	842.1	57.3	85.9#



#18  
 Methyl Acetate  
 Concen: Below Cal  
 RT: 2.80 min Scan# 270  
 Delta R.T. 0.02 min  
 Lab File: VX006032.D  
 Acq: 15 Nov 2018 20:40

Tgt Ion	Resp	Lower	Upper
43	100		
74	0.0	16.8	25.2#

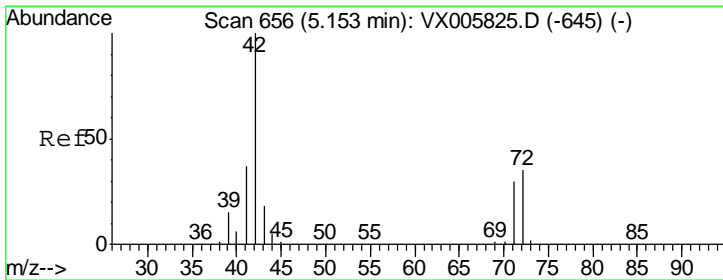
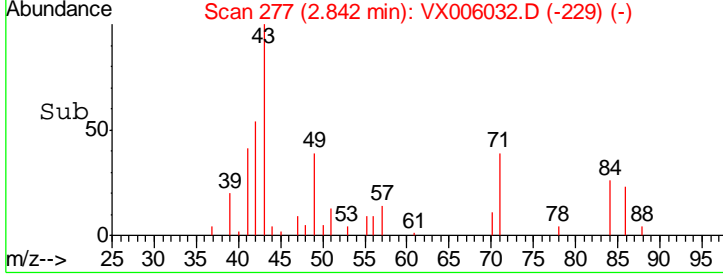
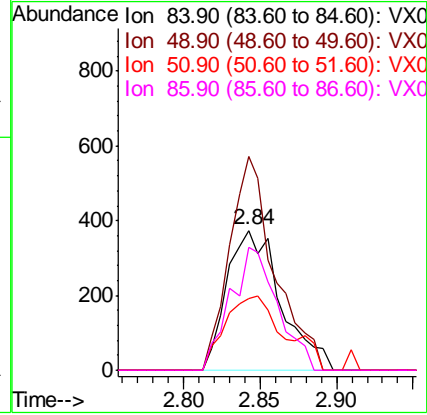
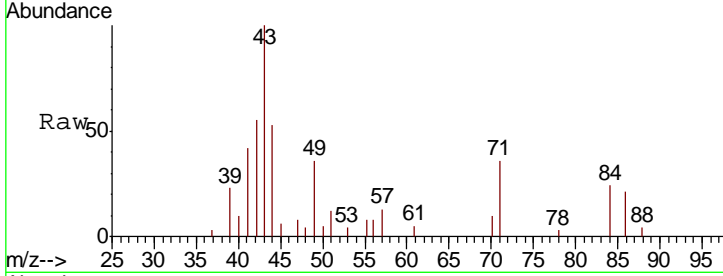




#20  
 Methylene Chloride  
 Concen: 0.573 ug/l  
 RT: 2.84 min Scan# 277  
 Delta R.T. -0.01 min  
 Lab File: VX006032.D  
 Acq: 15 Nov 2018 20:40

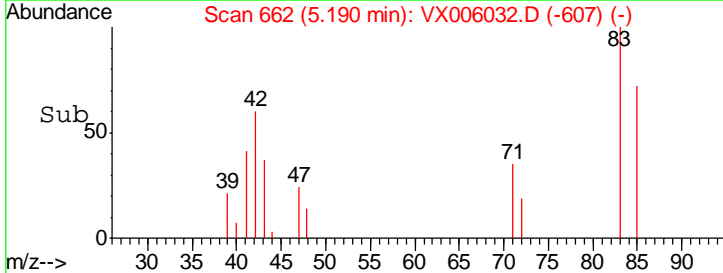
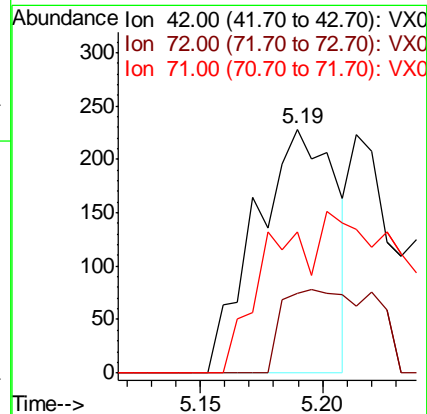
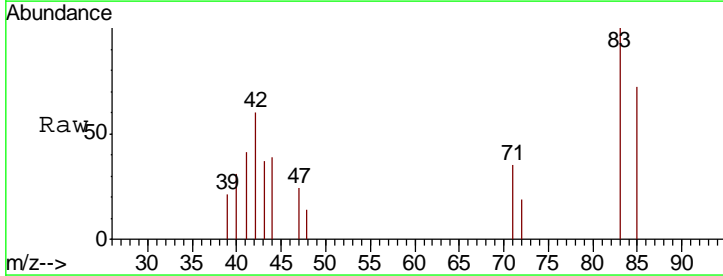
Instrument :  
 MSVOA\_X  
 ClientSampled :

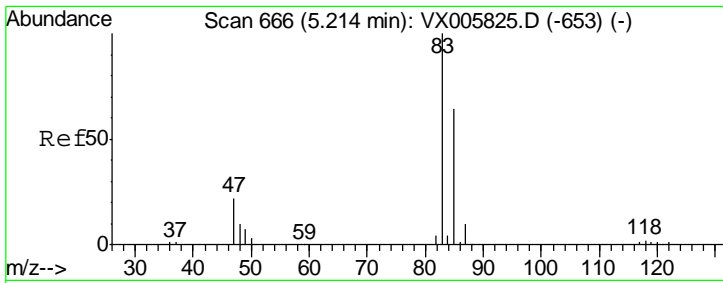
Tgt Ion	Resp	Lower	Upper
84	100		
49	152.7	109.5	164.3
51	51.1	33.3	49.9#
86	88.2	52.7	79.1#



#29  
 Tetrahydrofuran  
 Concen: 0.531 ug/l  
 RT: 5.19 min Scan# 662  
 Delta R.T. 0.04 min  
 Lab File: VX006032.D  
 Acq: 15 Nov 2018 20:40

Tgt Ion	Resp	Lower	Upper
42	100		
72	39.7	32.0	48.0
71	65.8	29.8	44.8#

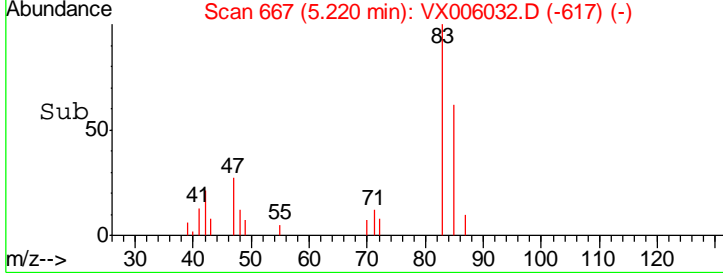
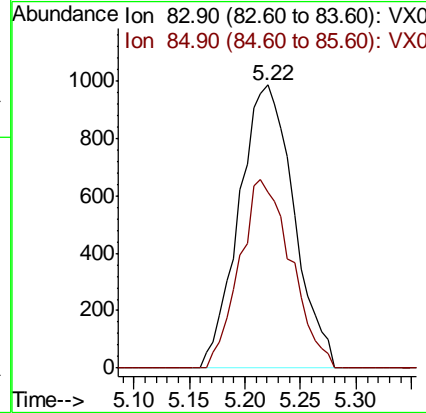
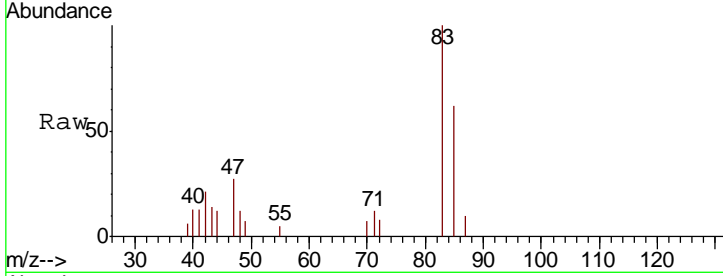




#30  
 Chloroform  
 Concen: 1.207 ug/l  
 RT: 5.22 min Scan# 667  
 Delta R.T. 0.01 min  
 Lab File: VX006032.D  
 Acq: 15 Nov 2018 20:40

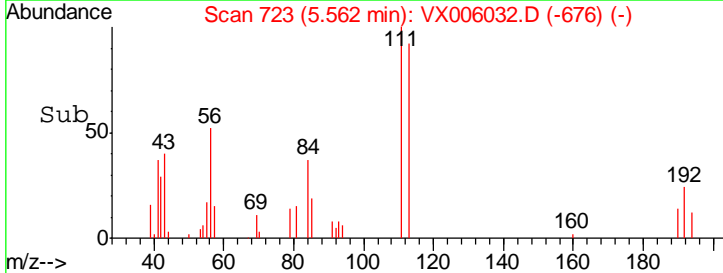
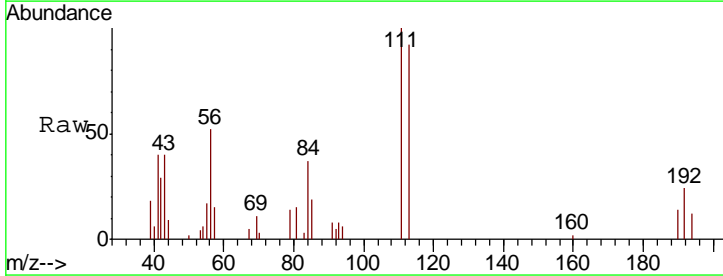
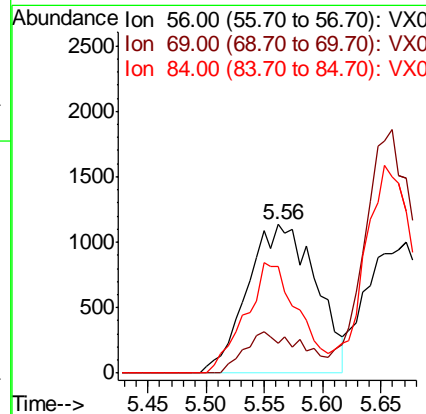
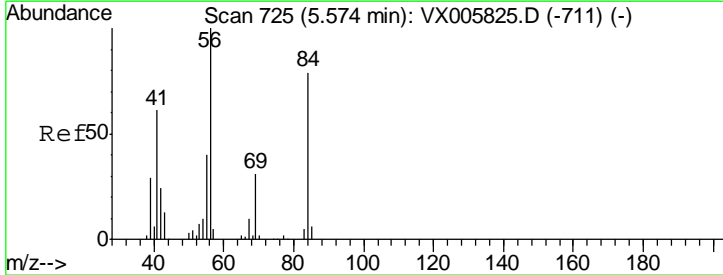
Instrument :  
 MSVOA\_X  
 ClientSampled :

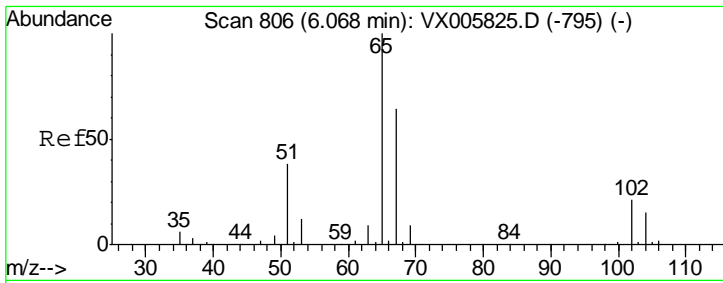
Tgt Ion	Resp	Lower	Upper
83	100		
85	62.2	50.6	76.0



#31  
 Cyclohexane  
 Concen: 1.842 ug/l  
 RT: 5.56 min Scan# 723  
 Delta R.T. -0.01 min  
 Lab File: VX006032.D  
 Acq: 15 Nov 2018 20:40

Tgt Ion	Resp	Lower	Upper
56	100		
69	20.4	22.6	34.0#
84	71.4	62.7	94.1

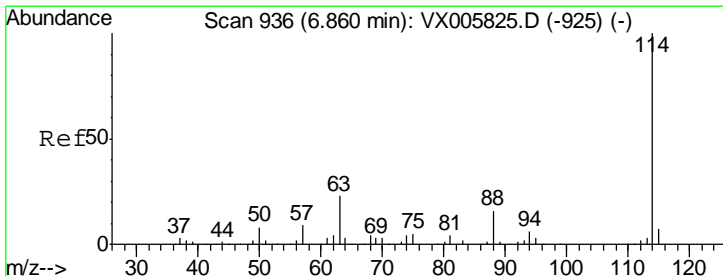
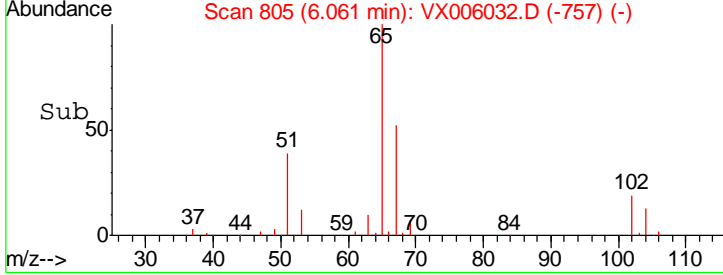
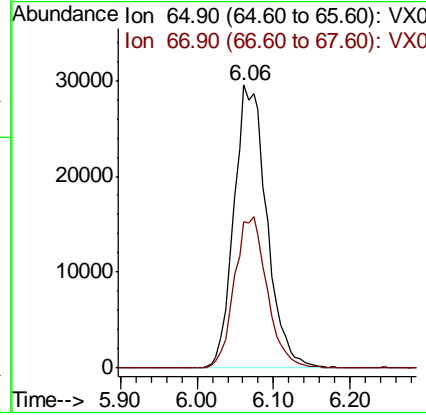
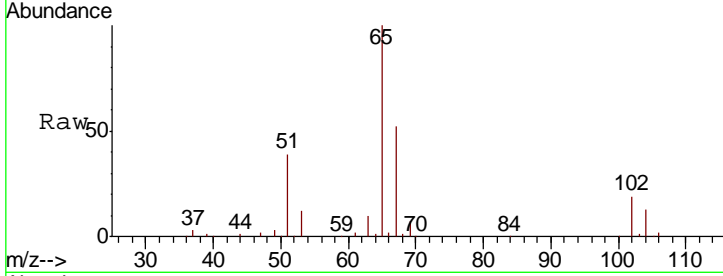




#33  
 1,2-Dichloroethane-d4  
 Concen: 48.524 ug/l  
 RT: 6.06 min Scan# 805  
 Delta R.T. -0.01 min  
 Lab File: VX006032.D  
 Acq: 15 Nov 2018 20:40

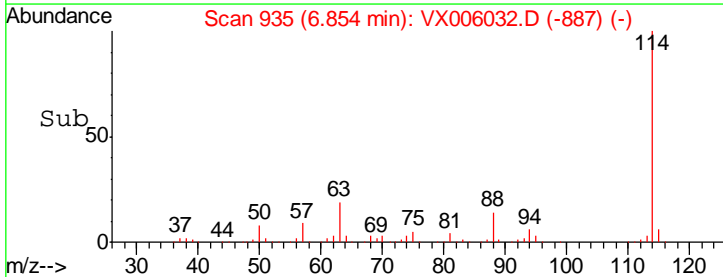
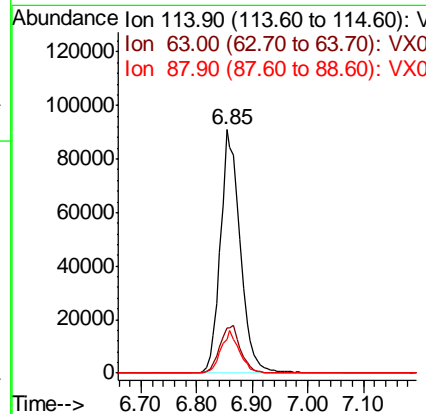
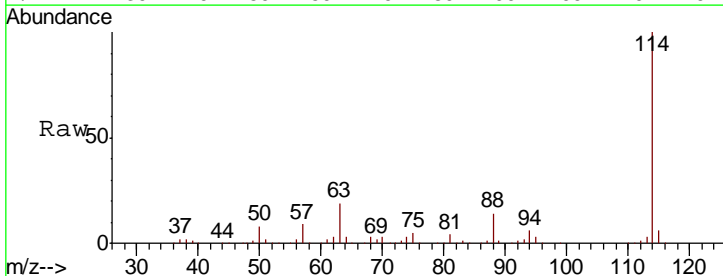
Instrument :  
 MSVOA\_X  
 ClientSampled :

Tgt Ion	Resp	Lower	Upper
65	100		
67	53.2	0.0	105.0

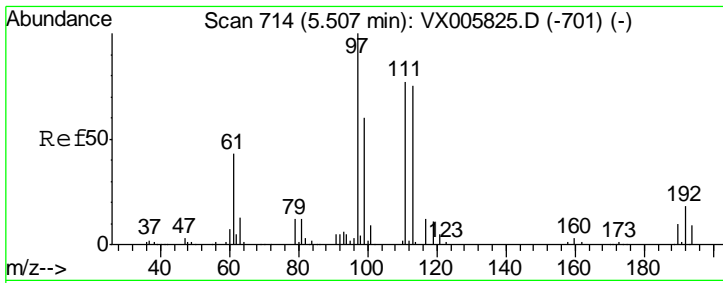


#34  
 1,4-Difluorobenzene  
 Concen: 50.000 ug/l  
 RT: 6.85 min Scan# 935  
 Delta R.T. -0.01 min  
 Lab File: VX006032.D  
 Acq: 15 Nov 2018 20:40

Tgt Ion	Resp	Lower	Upper
114	100		
63	18.7	0.0	42.8
88	14.0	0.0	31.2



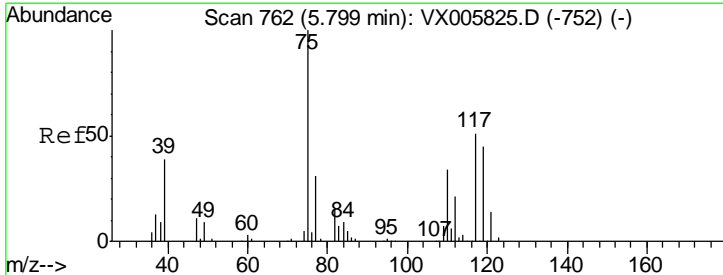
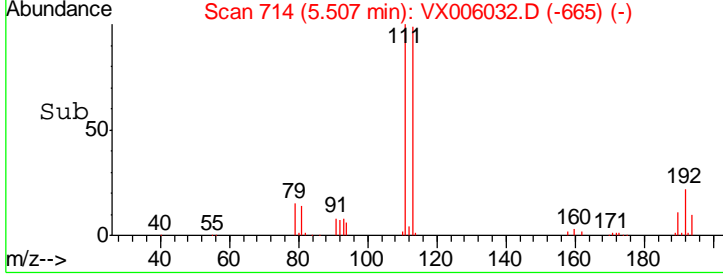
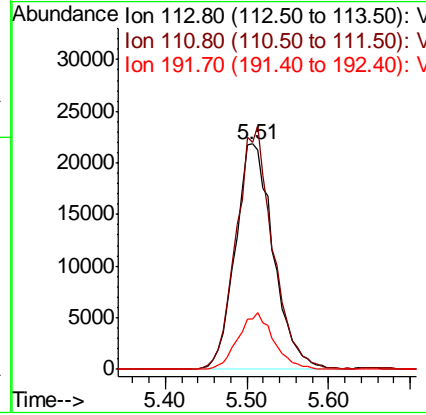
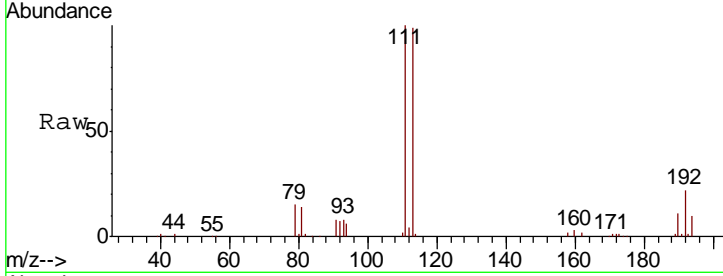




#35  
 Dibromofluoromethane  
 Concen: 45.980 ug/l  
 RT: 5.51 min Scan# 714  
 Delta R.T. -0.00 min  
 Lab File: VX006032.D  
 Acq: 15 Nov 2018 20:40

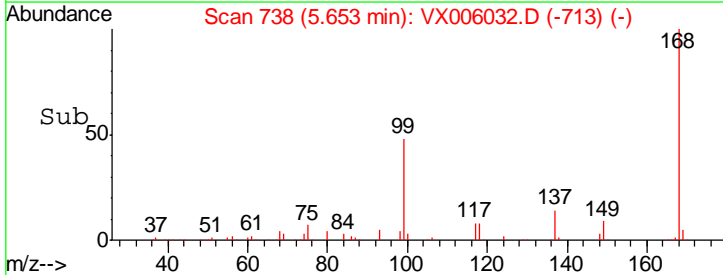
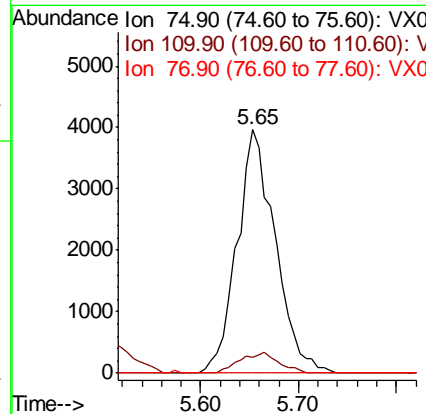
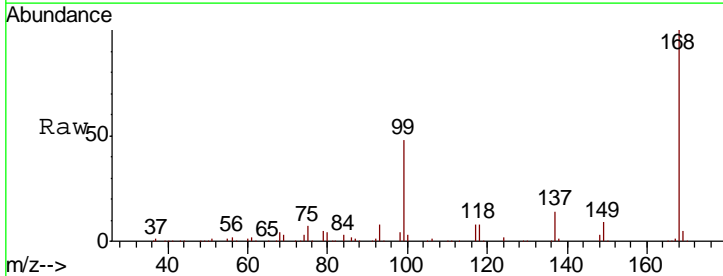
Instrument :  
 MSVOA\_X  
 ClientSampled :

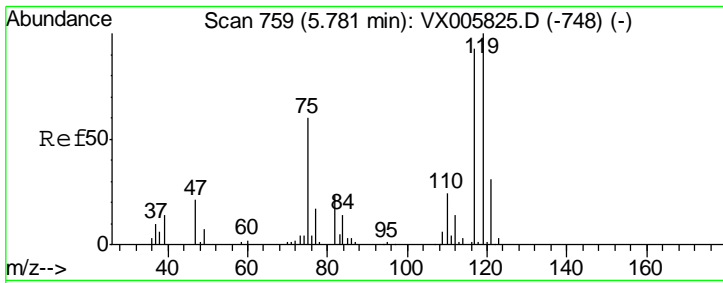
Tgt Ion	Resp	Lower	Upper
113	100		
111	103.0	82.3	123.5
192	23.3	17.9	26.9



#36  
 1,1-Dichloropropene  
 Concen: 4.945 ug/l  
 RT: 5.65 min Scan# 738  
 Delta R.T. -0.15 min  
 Lab File: VX006032.D  
 Acq: 15 Nov 2018 20:40

Tgt Ion	Resp	Lower	Upper
75	100		
110	8.7	17.4	52.2#
77	0.0	25.8	38.6#

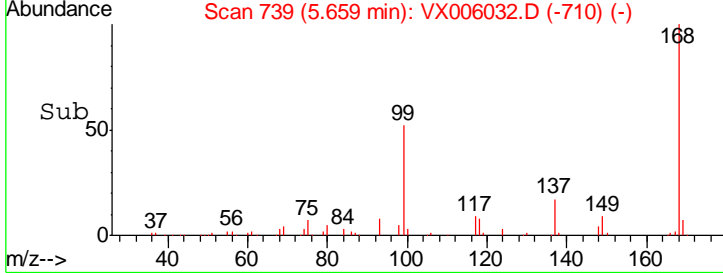
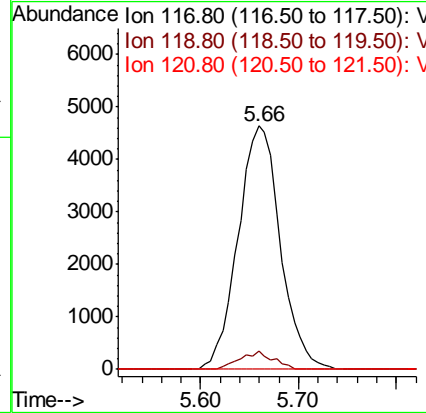
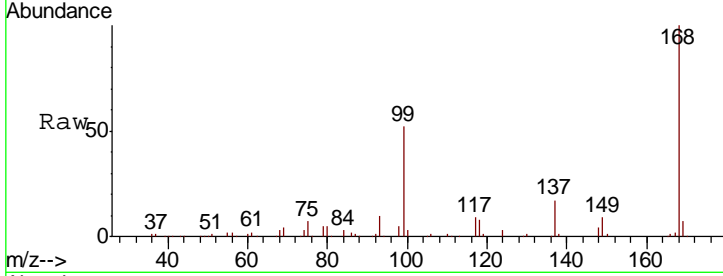




#38  
 Carbon Tetrachloride  
 Concen: 6.380 ug/l  
 RT: 5.66 min Scan# 739  
 Delta R.T. -0.12 min  
 Lab File: VX006032.D  
 Acq: 15 Nov 2018 20:40

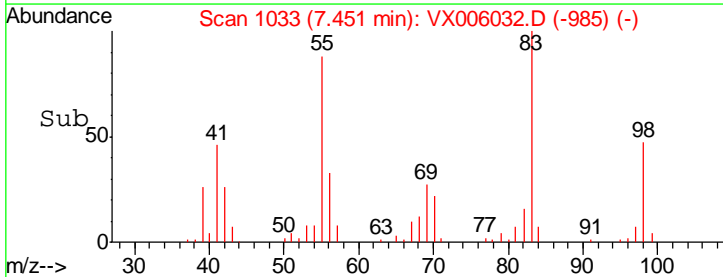
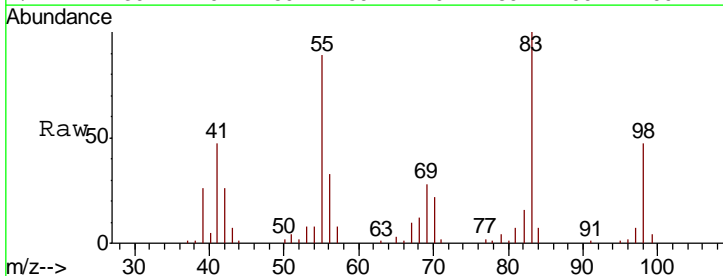
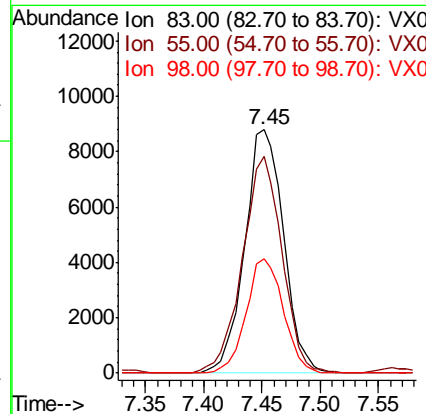
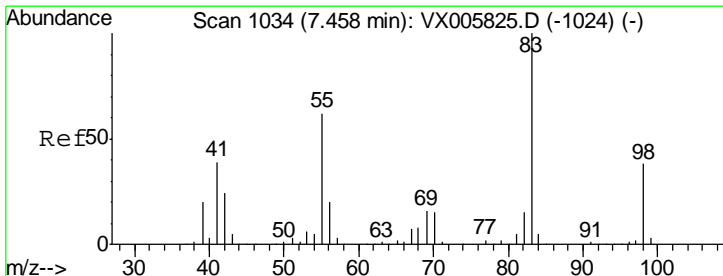
Instrument :  
 MSVOA\_X  
 ClientSampled :

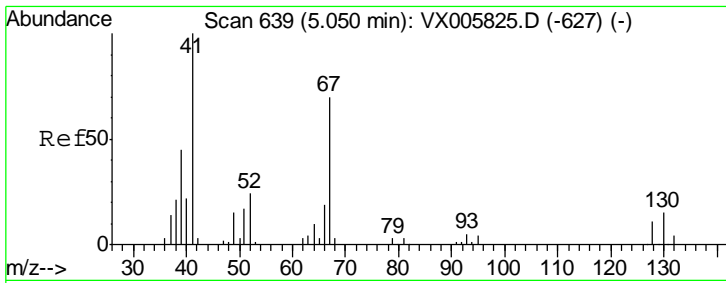
Tgt Ion	Resp	Lower	Upper
117	100		
119	7.6	78.1	117.1#
121	0.0	24.6	36.8#



#39  
 Methylcyclohexane  
 Concen: 9.307 ug/l  
 RT: 7.45 min Scan# 1033  
 Delta R.T. -0.01 min  
 Lab File: VX006032.D  
 Acq: 15 Nov 2018 20:40

Tgt Ion	Resp	Lower	Upper
83	100		
55	89.0	63.7	95.5
98	46.9	36.2	54.2

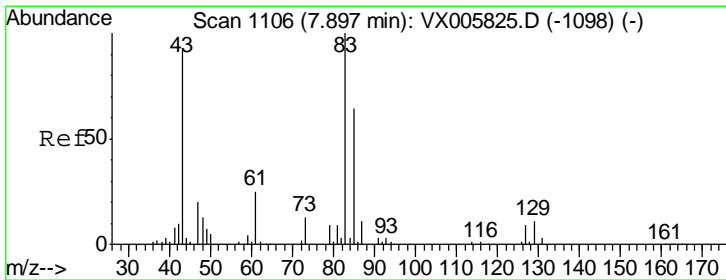
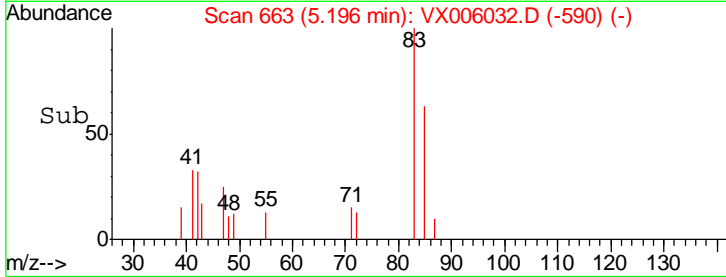
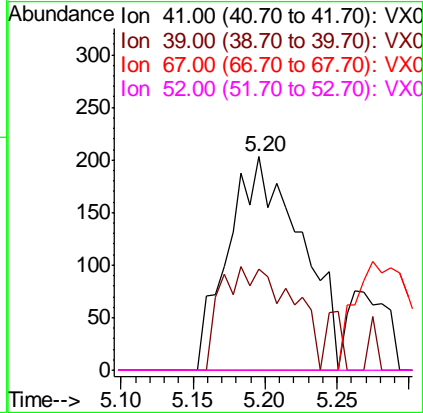
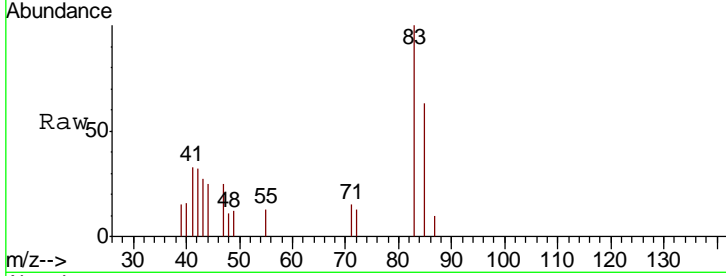




#41  
 Methacrylonitrile  
 Concen: 0.463 ug/l  
 RT: 5.20 min Scan# 663  
 Delta R.T. 0.15 min  
 Lab File: VX006032.D  
 Acq: 15 Nov 2018 20:40

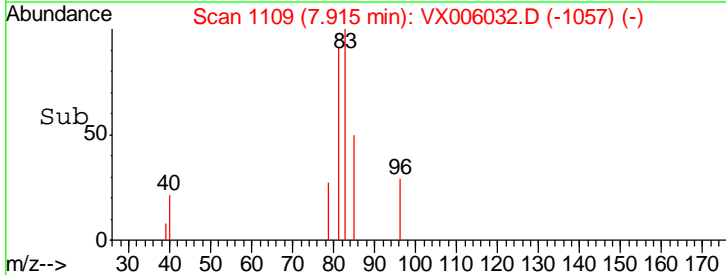
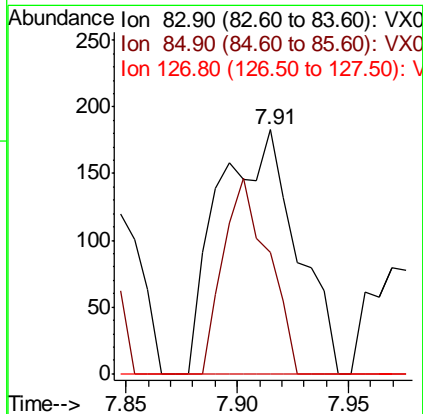
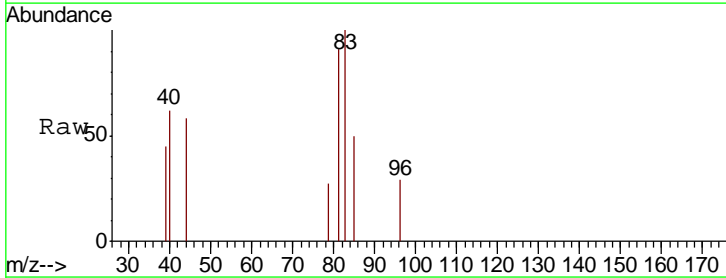
Instrument :  
 MSVOA\_X  
 ClientSampled :

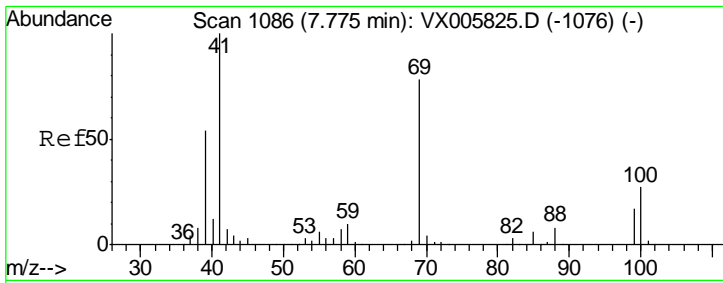
Tgt Ion	Resp	Lower	Upper
41	100		
39	47.3	42.2	63.2
67	0.0	53.4	80.0#
52	0.0	23.4	35.2#



#47  
 Bromodichloromethane  
 Concen: 0.244 ug/l  
 RT: 7.91 min Scan# 1109  
 Delta R.T. 0.02 min  
 Lab File: VX006032.D  
 Acq: 15 Nov 2018 20:40

Tgt Ion	Resp	Lower	Upper
83	100		
85	49.7	50.2	75.4#
127	0.0	6.9	10.3#



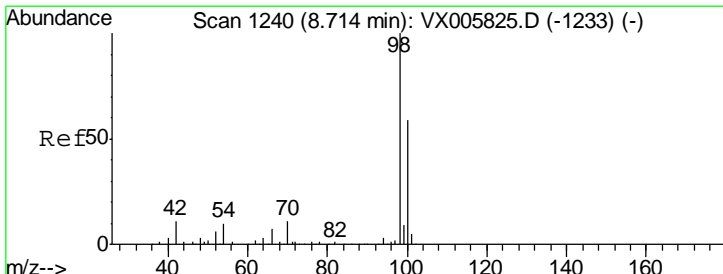
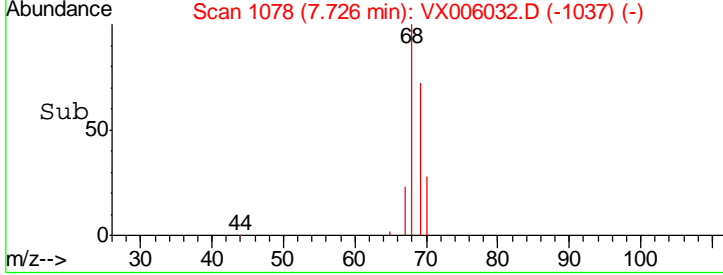
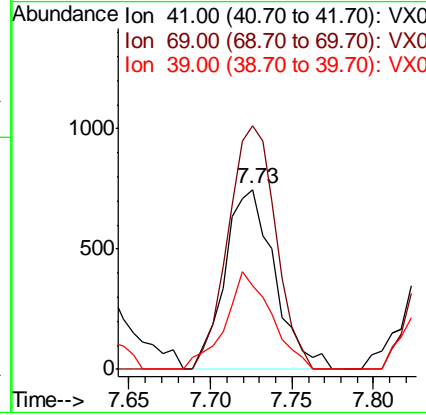
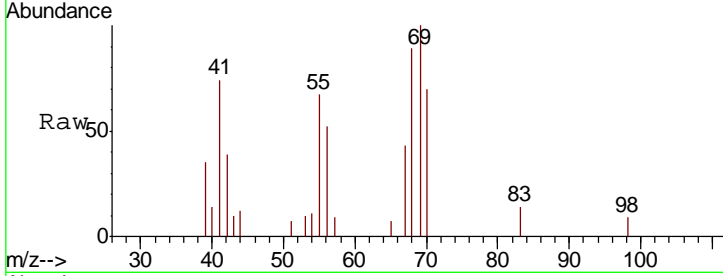


#48  
 Methyl methacrylate  
 Concen: 0.858 ug/l  
 RT: 7.73 min Scan# 1078  
 Delta R.T. -0.05 min  
 Lab File: VX006032.D  
 Acq: 15 Nov 2018 20:40

Instrument :  
 MSVOA\_X  
 ClientSampled :

Tgt Ion: 41 Resp: 1592

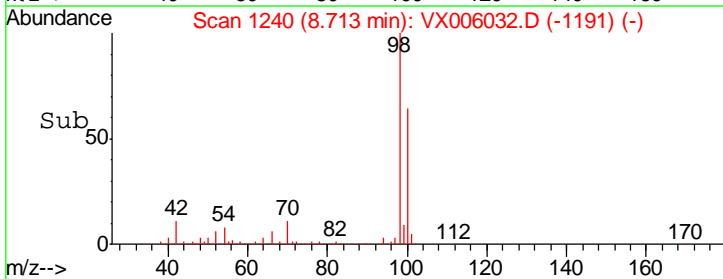
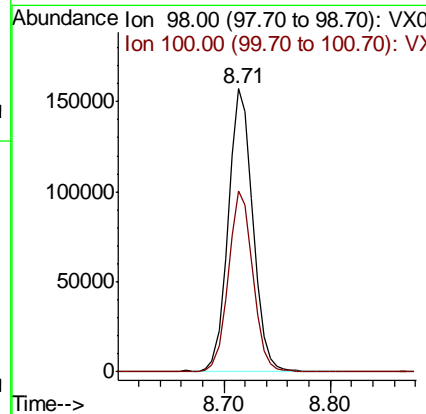
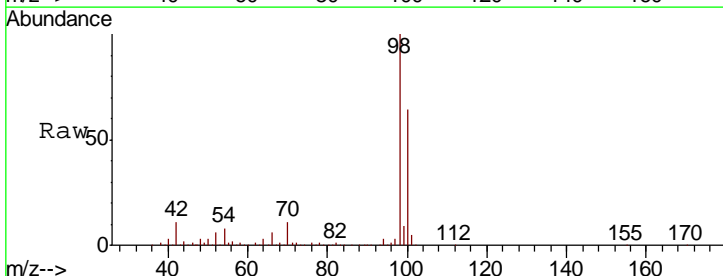
Ion	Ratio	Lower	Upper
41	100		
69	129.1	63.2	94.8#
39	50.5	42.2	63.2

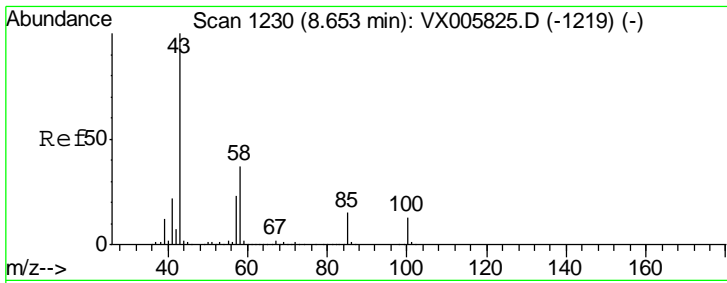


#50  
 Toluene-d8  
 Concen: 49.735 ug/l  
 RT: 8.71 min Scan# 1240  
 Delta R.T. -0.00 min  
 Lab File: VX006032.D  
 Acq: 15 Nov 2018 20:40

Tgt Ion: 98 Resp: 253095

Ion	Ratio	Lower	Upper
98	100		
100	64.0	51.3	76.9

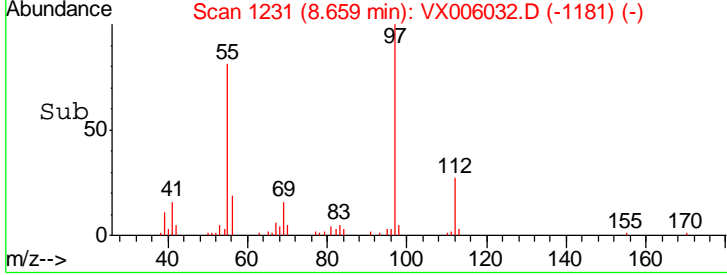
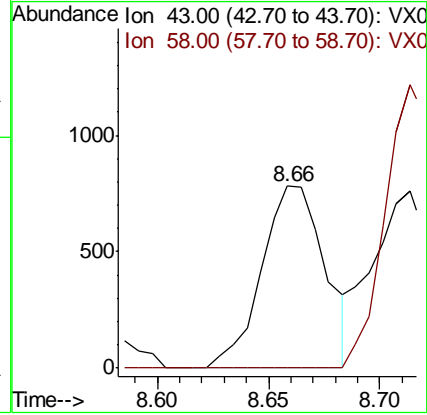
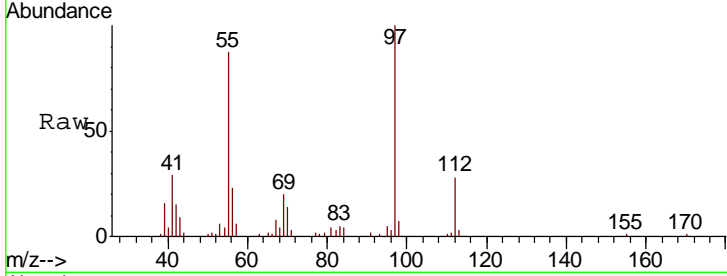




#51  
 4-Methyl-2-Pentanone  
 Concen: 0.592 ug/l  
 RT: 8.66 min Scan# 1231  
 Delta R.T. 0.01 min  
 Lab File: VX006032.D  
 Acq: 15 Nov 2018 20:40

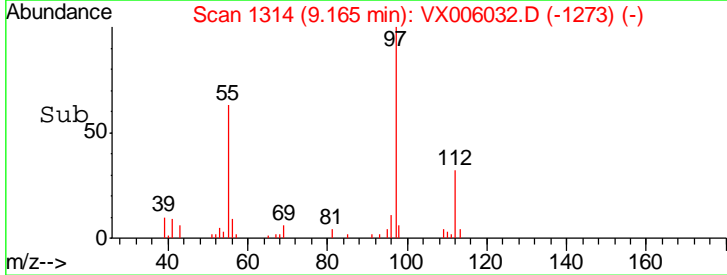
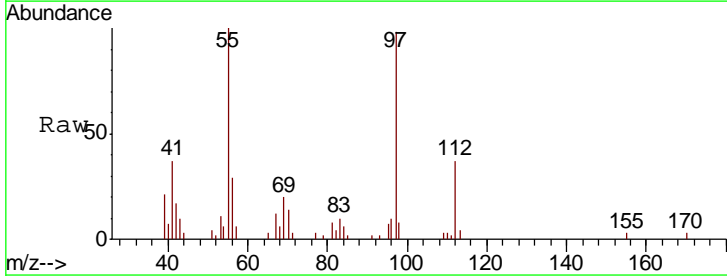
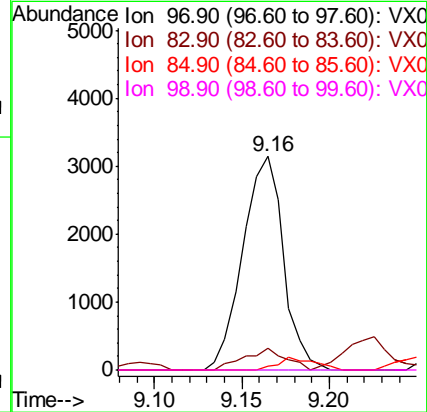
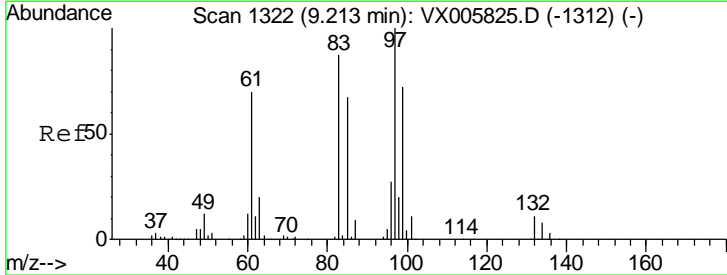
Instrument :  
 MSVOA\_X  
 ClientSampled :

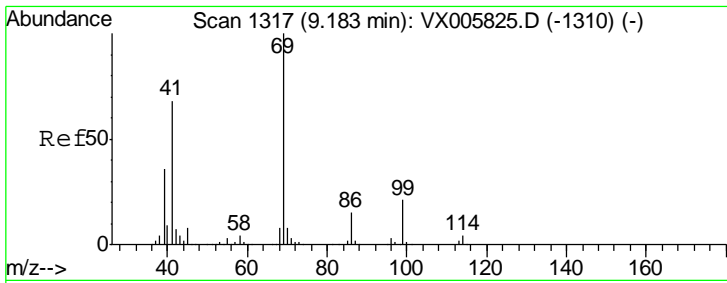
Tgt Ion	Resp	Lower	Upper
43	100		
58	0.0	29.7	44.5#



#55  
 1,1,2-Trichloroethane  
 Concen: 3.221 ug/l  
 RT: 9.16 min Scan# 1314  
 Delta R.T. -0.05 min  
 Lab File: VX006032.D  
 Acq: 15 Nov 2018 20:40

Tgt Ion	Resp	Lower	Upper
97	100		
83	10.3	70.7	106.1#
85	2.0	45.8	68.6#
99	0.0	51.8	77.8#

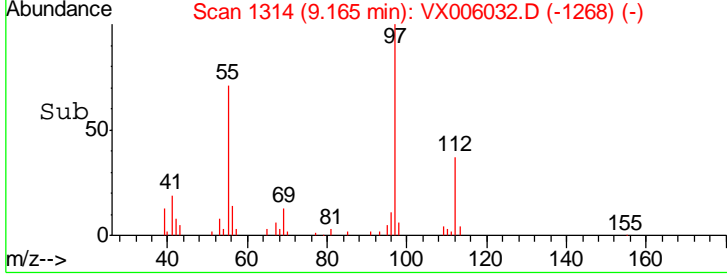
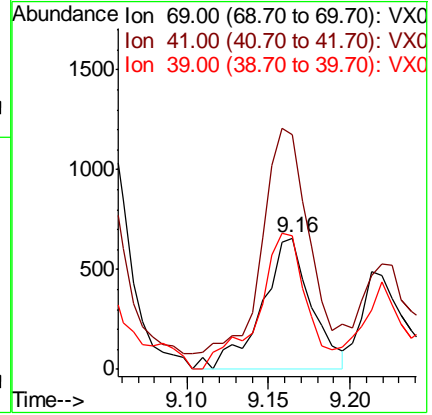
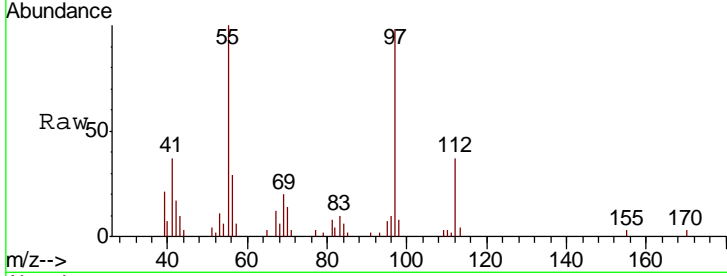




#56  
 Ethyl methacrylate  
 Concen: 0.591 ug/l  
 RT: 9.16 min Scan# 1314  
 Delta R.T. -0.02 min  
 Lab File: VX006032.D  
 Acq: 15 Nov 2018 20:40

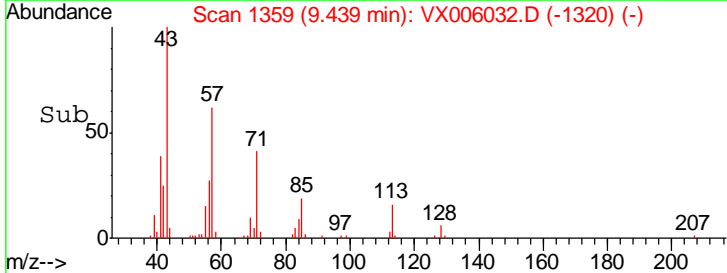
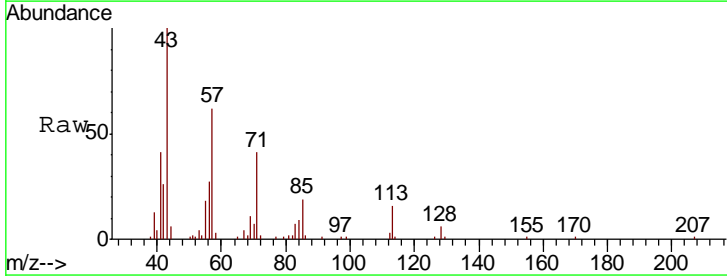
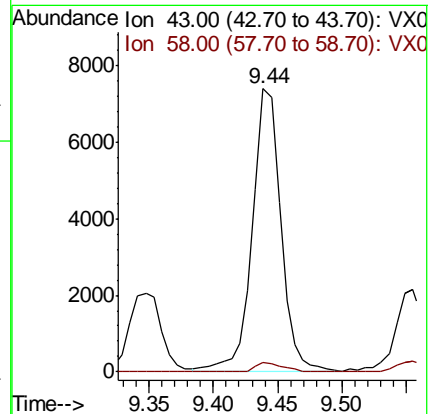
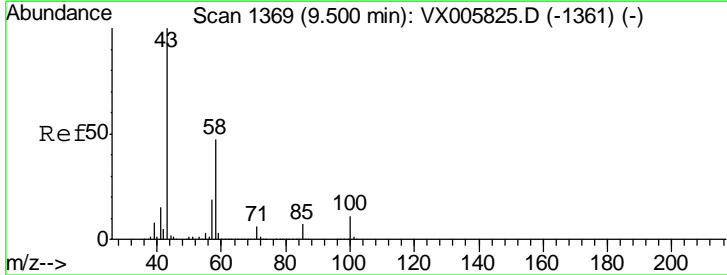
Instrument :  
 MSVOA\_X  
 ClientSampled :

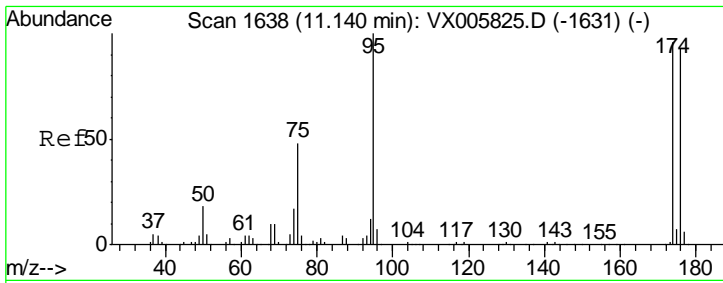
Tgt Ion	Resp	Lower	Upper
69	100		
41	164.0	57.0	85.6#
39	100.6	28.3	42.5#



#59  
 2-Hexanone  
 Concen: 4.934 ug/l  
 RT: 9.44 min Scan# 1359  
 Delta R.T. -0.06 min  
 Lab File: VX006032.D  
 Acq: 15 Nov 2018 20:40

Tgt Ion	Resp	Lower	Upper
43	100		
58	3.0	25.9	77.8#

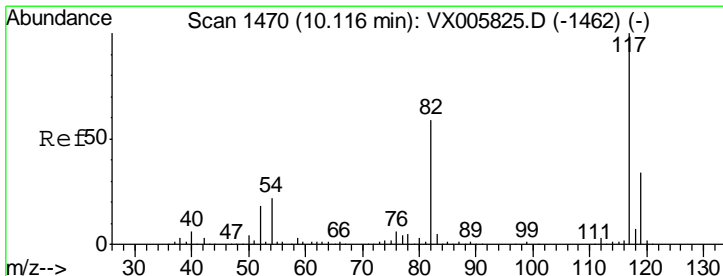
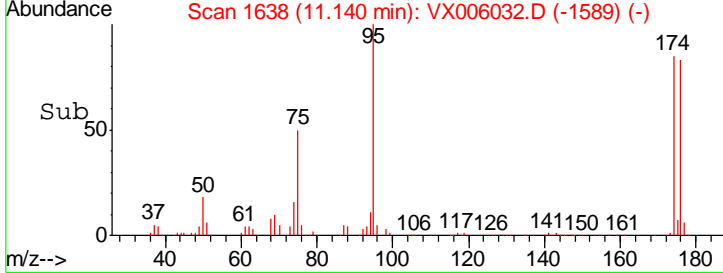
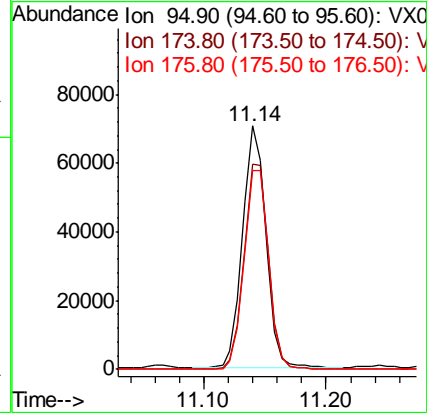
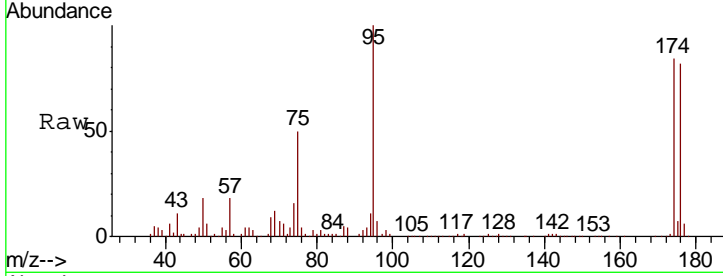




#62  
 4-Bromofluorobenzene  
 Concen: 51.064 ug/l  
 RT: 11.14 min Scan# 1638  
 Delta R.T. -0.00 min  
 Lab File: VX006032.D  
 Acq: 15 Nov 2018 20:40

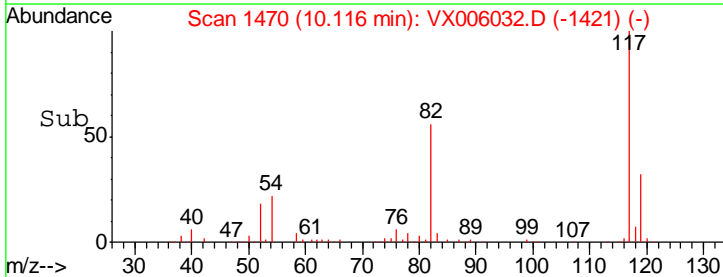
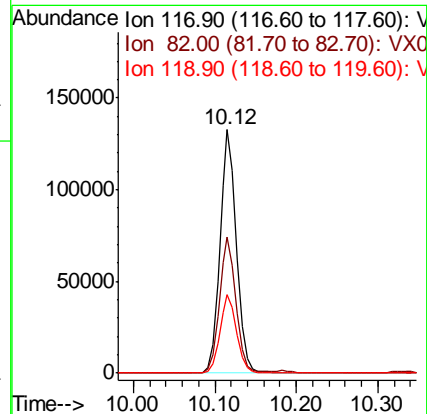
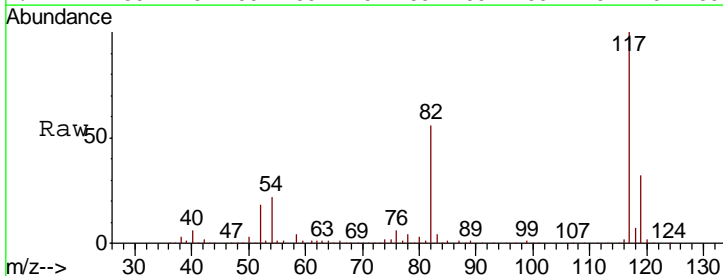
Instrument :  
 MSVOA\_X  
 ClientSampled :

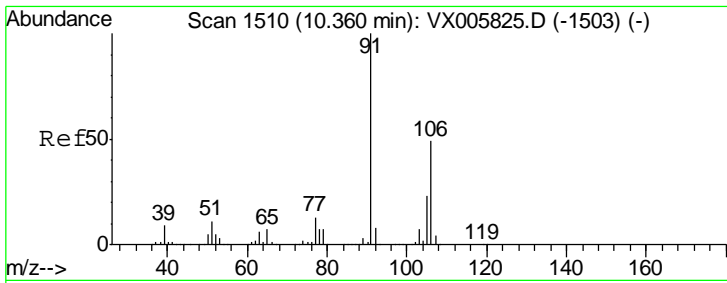
Tgt Ion	Resp	Lower	Upper
95	100		
174	88.3	0.0	184.4
176	85.9	0.0	177.4



#63  
 Chlorobenzene-d5  
 Concen: 50.000 ug/l  
 RT: 10.12 min Scan# 1470  
 Delta R.T. -0.00 min  
 Lab File: VX006032.D  
 Acq: 15 Nov 2018 20:40

Tgt Ion	Resp	Lower	Upper
117	100		
82	55.6	44.1	66.1
119	32.4	26.2	39.2

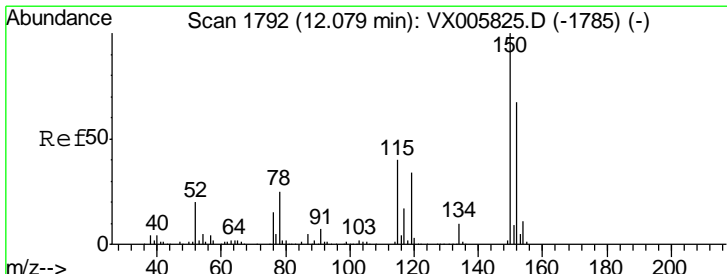
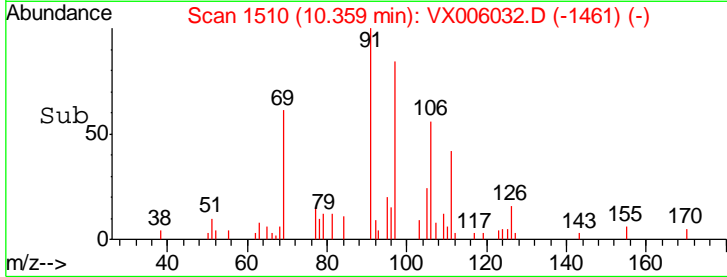
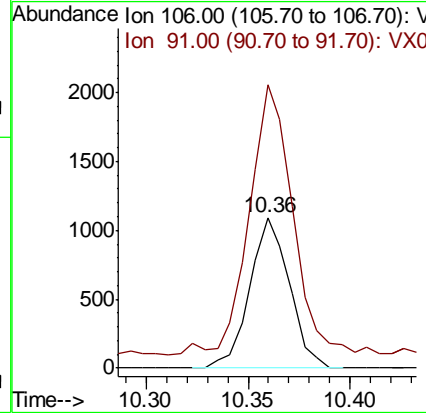
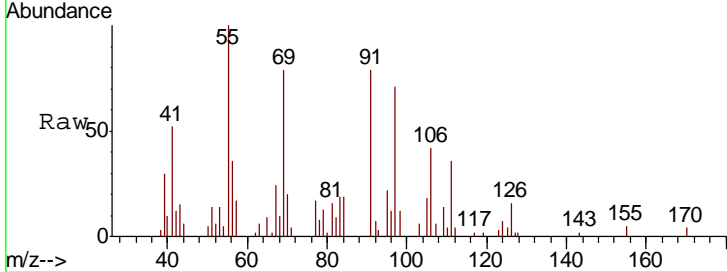




#68  
 m/p-Xylenes  
 Concen: 0.634 ug/l  
 RT: 10.36 min Scan# 1510  
 Delta R.T. -0.00 min  
 Lab File: VX006032.D  
 Acq: 15 Nov 2018 20:40

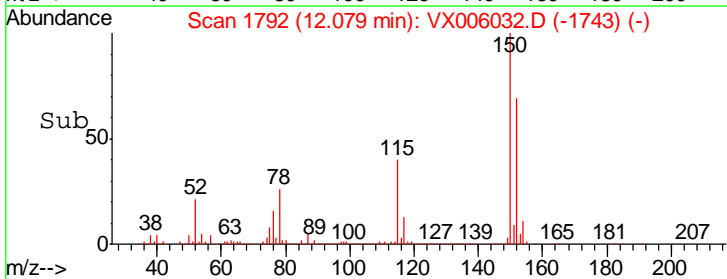
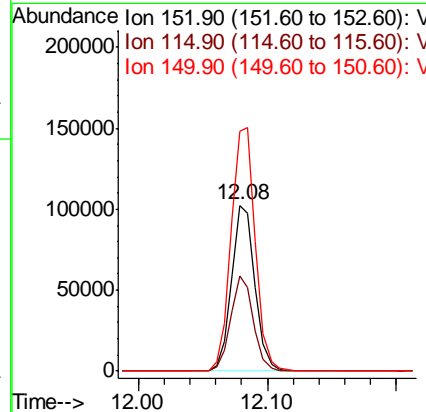
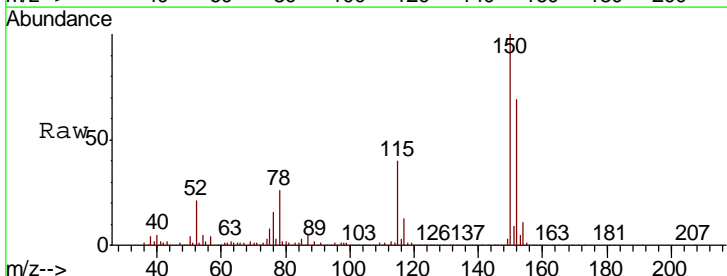
Instrument : MSVOA\_X  
 ClientSampled :

Tgt Ion	Resp	Lower	Upper
106	1469		
91	207.4	164.2	246.4

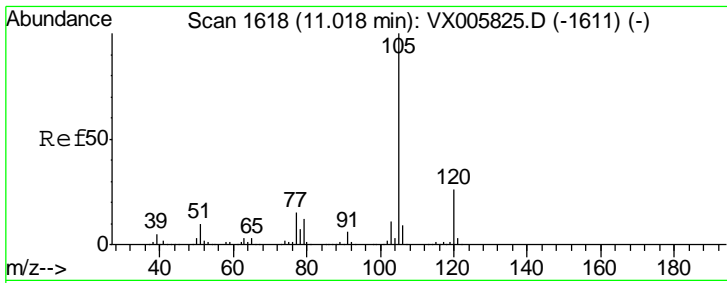


#72  
 1,4-Dichlorobenzene-d4  
 Concen: 50.000 ug/l  
 RT: 12.08 min Scan# 1792  
 Delta R.T. -0.00 min  
 Lab File: VX006032.D  
 Acq: 15 Nov 2018 20:40

Tgt Ion	Resp	Lower	Upper
152	129442		
150	153.1	0.0	346.4
115	55.8	39.4	118.1



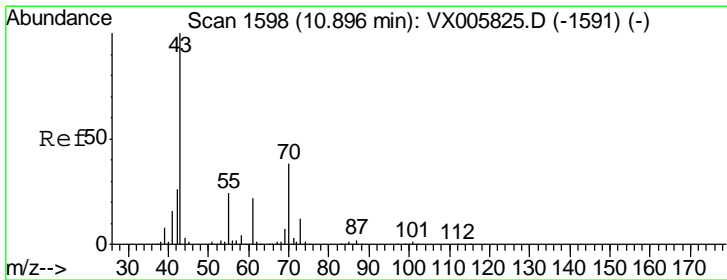
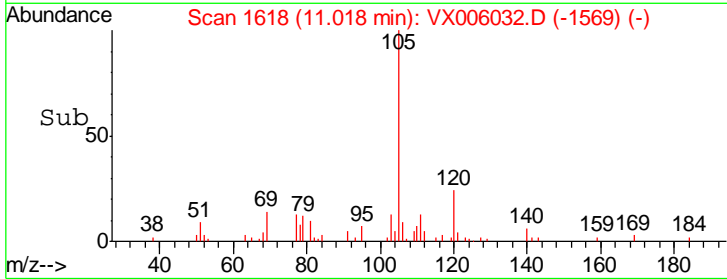
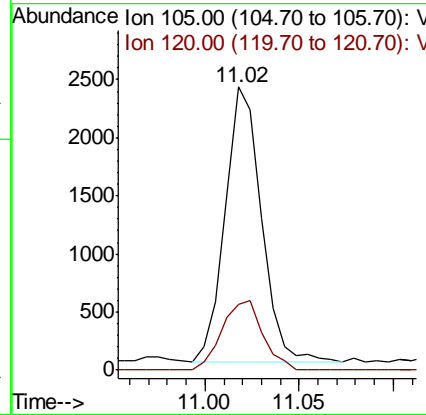
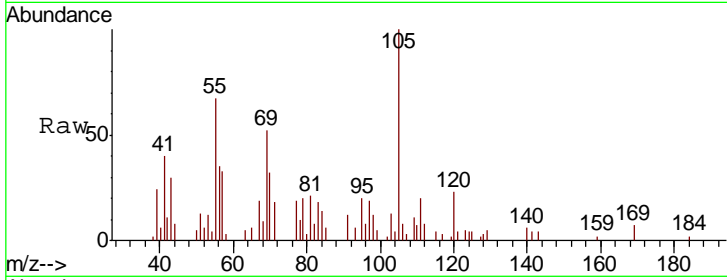




#73  
 Isopropylbenzene  
 Concen: 0.424 ug/l  
 RT: 11.02 min Scan# 1618  
 Delta R.T. -0.00 min  
 Lab File: VX006032.D  
 Acq: 15 Nov 2018 20:40

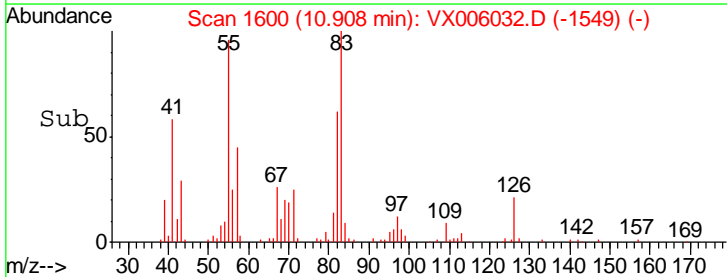
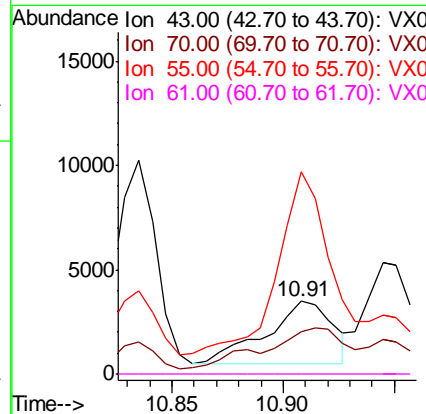
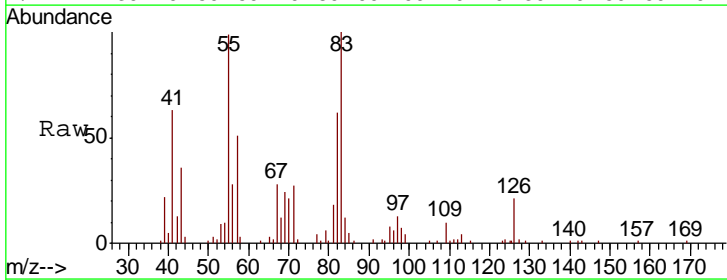
Instrument :  
 MSVOA\_X  
 ClientSampled :

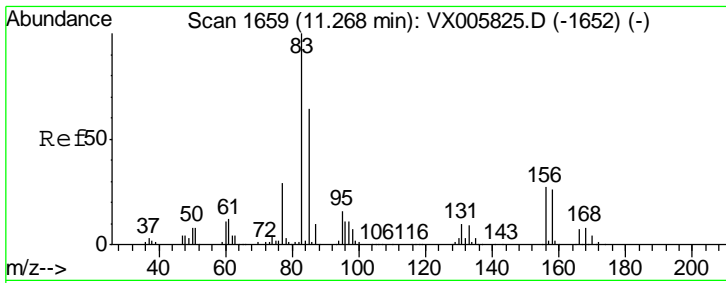
Tgt Ion	Resp	Lower	Upper
105	100		
120	28.3	13.1	39.3



#74  
 N-amyl acetate  
 Concen: 2.722 ug/l  
 RT: 10.91 min Scan# 1600  
 Delta R.T. 0.01 min  
 Lab File: VX006032.D  
 Acq: 15 Nov 2018 20:40

Tgt Ion	Resp	Lower	Upper
43	100		
70	75.7	31.6	47.4#
55	227.3	19.7	29.5#
61	0.0	18.3	27.5#

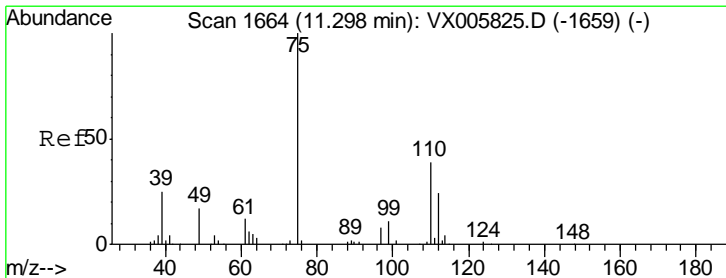
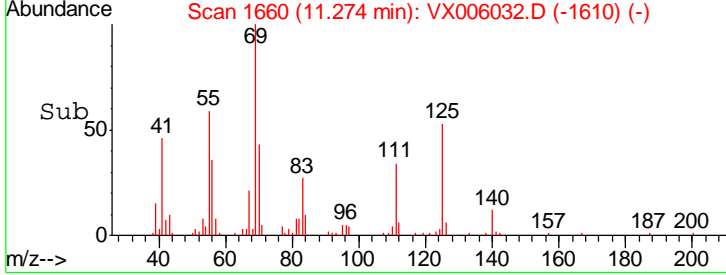
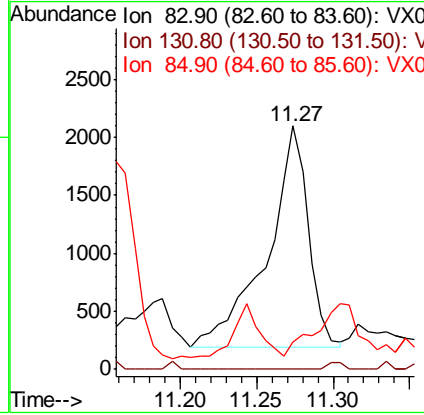
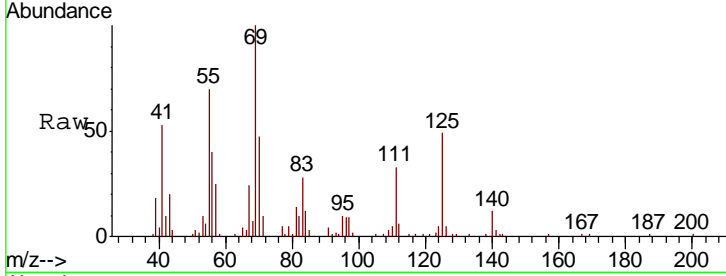




#75  
 1,1,2,2-Tetrachloroethane  
 Concen: 1.290 ug/l  
 RT: 11.27 min Scan# 1660  
 Delta R.T. 0.01 min  
 Lab File: VX006032.D  
 Acq: 15 Nov 2018 20:40

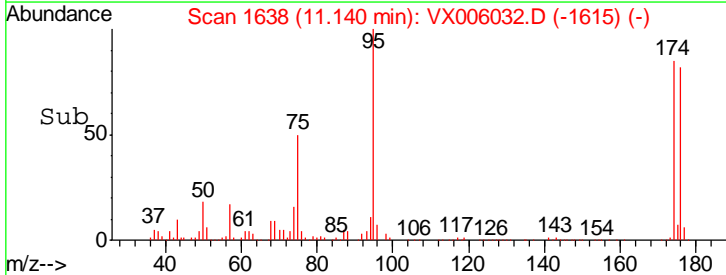
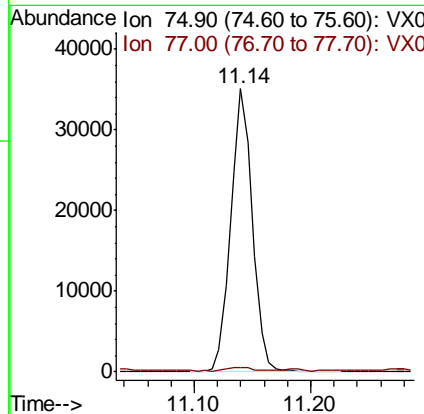
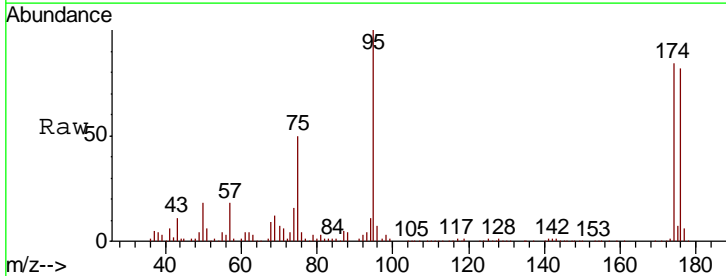
Instrument : MSVOA\_X  
 ClientSampled :

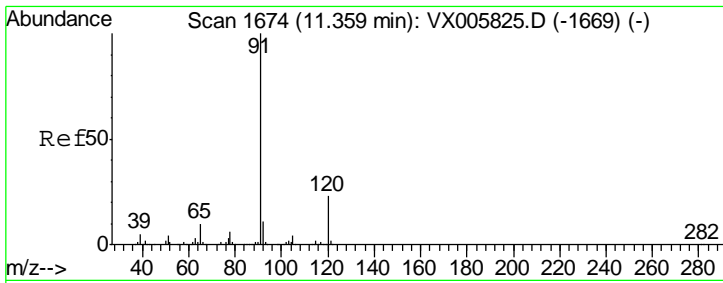
Tgt Ion	Resp	Lower	Upper
83	100		
131	0.0	5.3	15.9#
85	0.0	32.0	96.2#



#76  
 1,2,3-Trichloropropane  
 Concen: 17.174 ug/l  
 RT: 11.14 min Scan# 1638  
 Delta R.T. -0.16 min  
 Lab File: VX006032.D  
 Acq: 15 Nov 2018 20:40

Tgt Ion	Resp	Lower	Upper
75	100		
77	1.5	20.5	61.6#

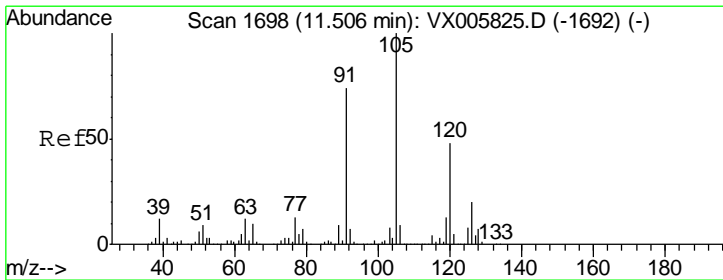
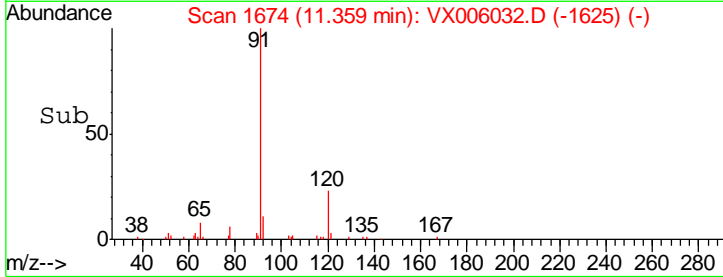
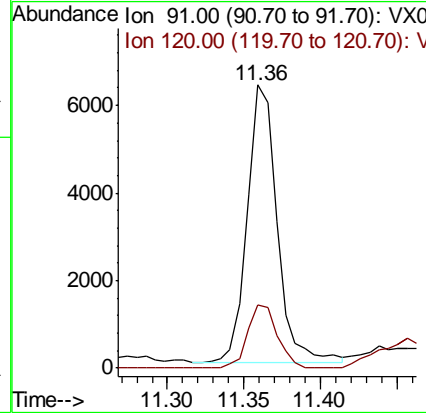
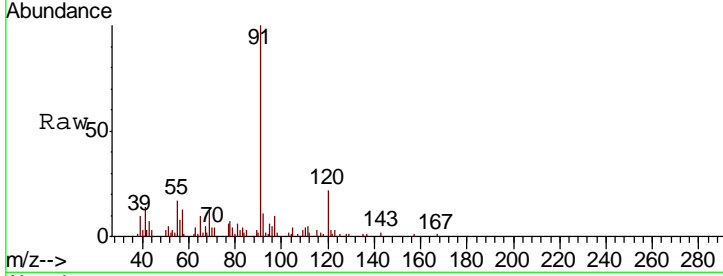




#78  
 n-propylbenzene  
 Concen: 0.974 ug/l  
 RT: 11.36 min Scan# 1674  
 Delta R.T. -0.00 min  
 Lab File: VX006032.D  
 Acq: 15 Nov 2018 20:40

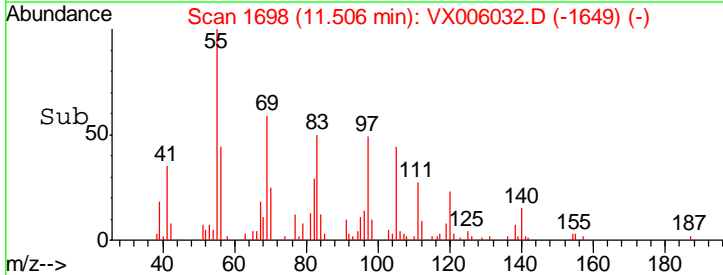
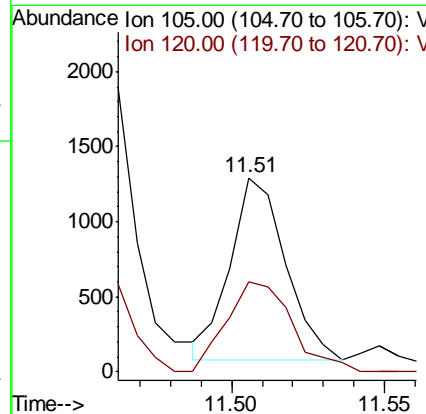
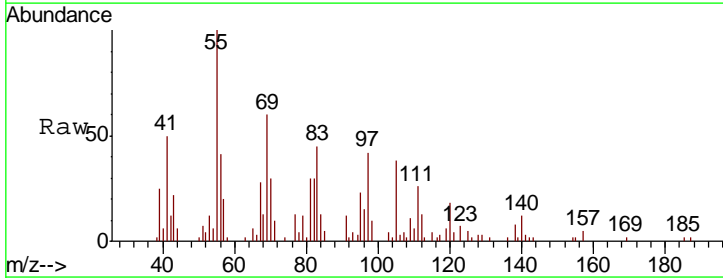
Instrument : MSVOA\_X  
 ClientSampled :

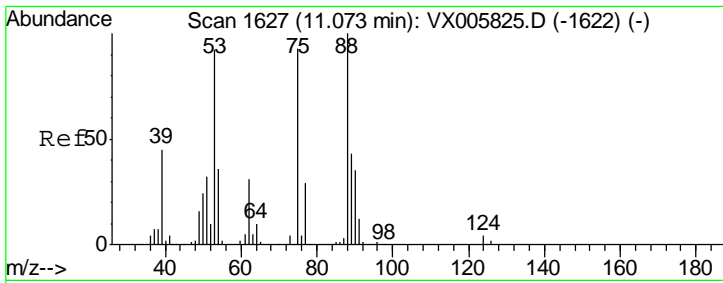
Tgt Ion	Resp	Lower	Upper
91	100		
120	22.5	11.9	35.5



#80  
 1,3,5-Trimethylbenzene  
 Concen: 0.238 ug/l  
 RT: 11.51 min Scan# 1698  
 Delta R.T. -0.00 min  
 Lab File: VX006032.D  
 Acq: 15 Nov 2018 20:40

Tgt Ion	Resp	Lower	Upper
105	100		
120	58.8	24.1	72.2

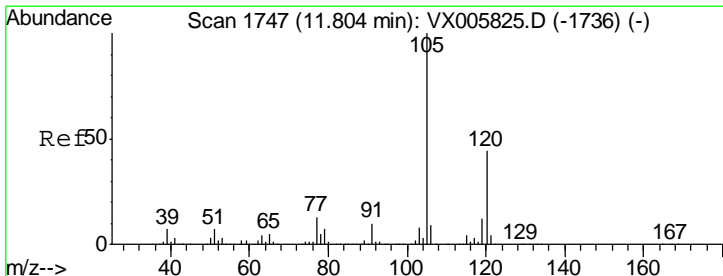
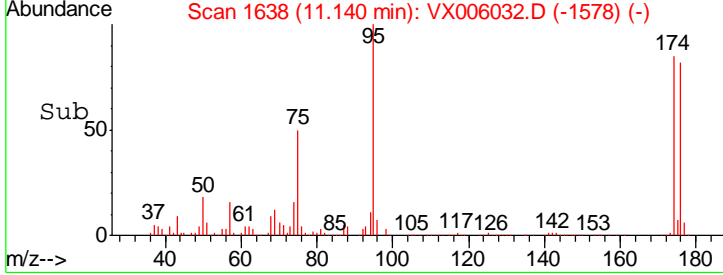
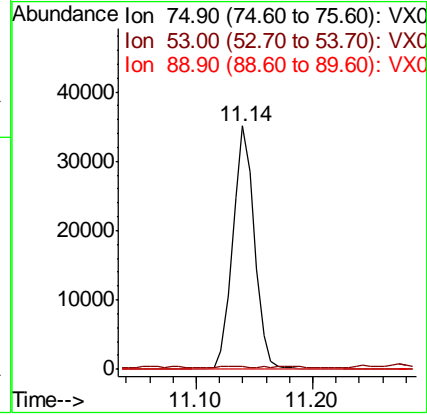
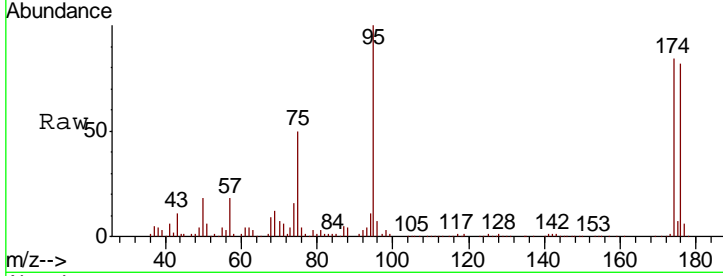




#81  
 trans-1,4-Dichloro-2-butene  
 Concen: 54.738 ug/l  
 RT: 11.14 min Scan# 1638  
 Delta R.T. 0.07 min  
 Lab File: VX006032.D  
 Acq: 15 Nov 2018 20:40

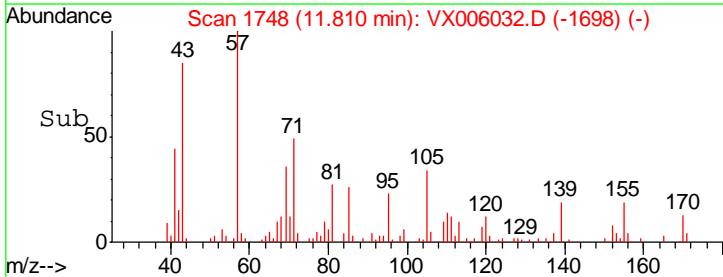
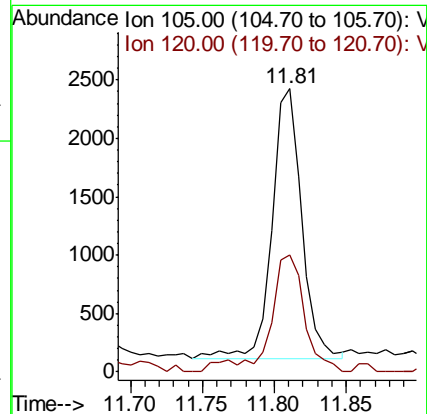
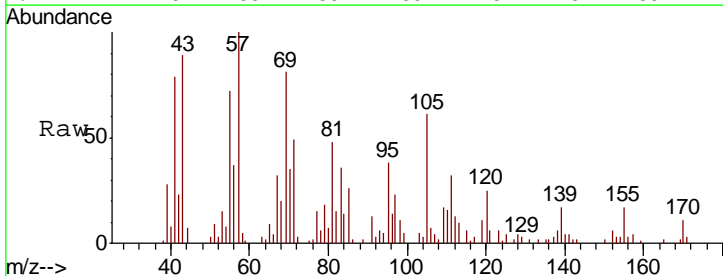
Instrument :  
 MSVOA\_X  
 ClientSampled :

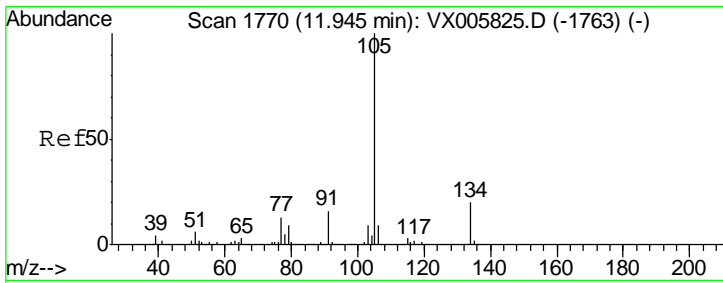
Tgt Ion	Resp	Lower	Upper
75	100		
53	0.8	80.2	120.2#
89	0.0	39.8	59.8#



#84  
 1,2,4-Trimethylbenzene  
 Concen: 0.353 ug/l  
 RT: 11.81 min Scan# 1748  
 Delta R.T. 0.01 min  
 Lab File: VX006032.D  
 Acq: 15 Nov 2018 20:40

Tgt Ion	Resp	Lower	Upper
105	100		
120	47.0	22.4	67.0

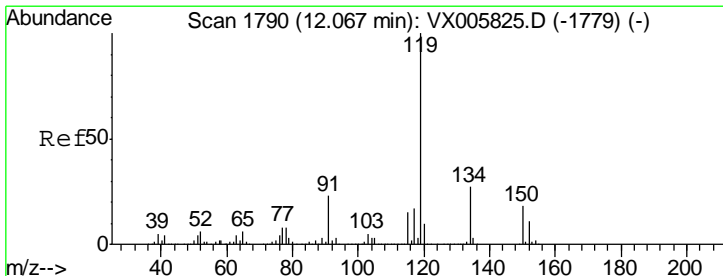
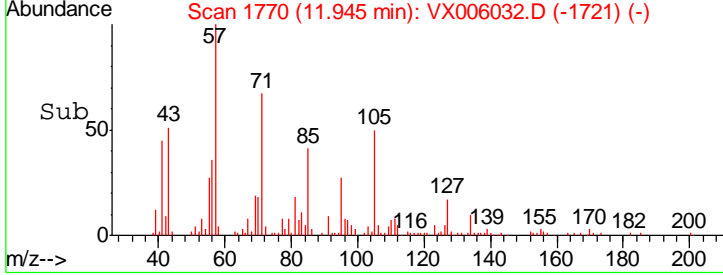
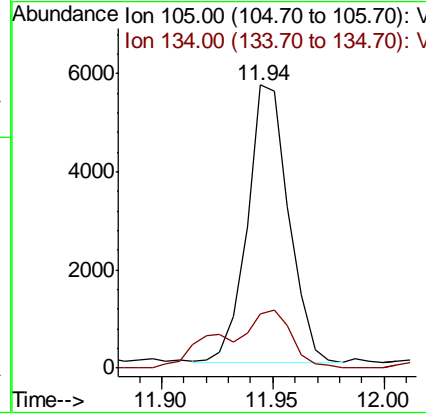
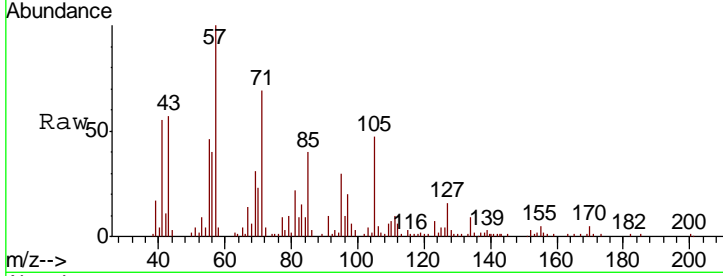




#85  
 sec-Butylbenzene  
 Concen: 0.933 ug/l  
 RT: 11.94 min Scan# 1770  
 Delta R.T. -0.00 min  
 Lab File: VX006032.D  
 Acq: 15 Nov 2018 20:40

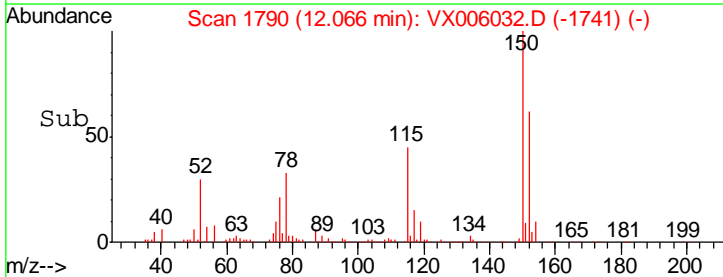
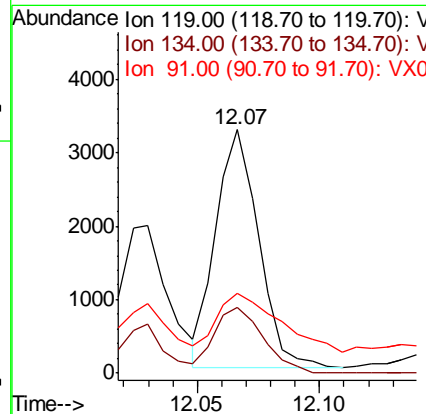
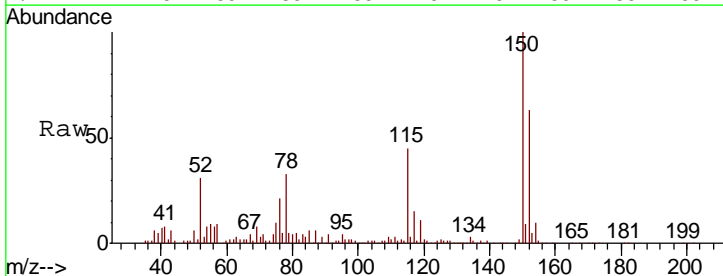
Instrument :  
 MSVOA\_X  
 ClientSampled :

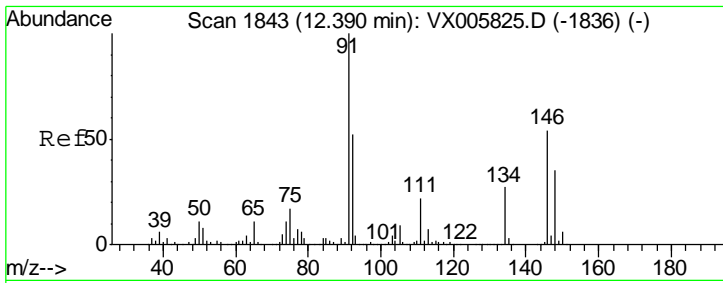
Tgt Ion	Resp	Lower	Upper
105	100		
134	34.2	10.2	30.4#



#86  
 p-Isopropyltoluene  
 Concen: 0.561 ug/l  
 RT: 12.07 min Scan# 1790  
 Delta R.T. -0.00 min  
 Lab File: VX006032.D  
 Acq: 15 Nov 2018 20:40

Tgt Ion	Resp	Lower	Upper
119	100		
134	31.7	13.0	39.0
91	36.2	11.4	34.2#



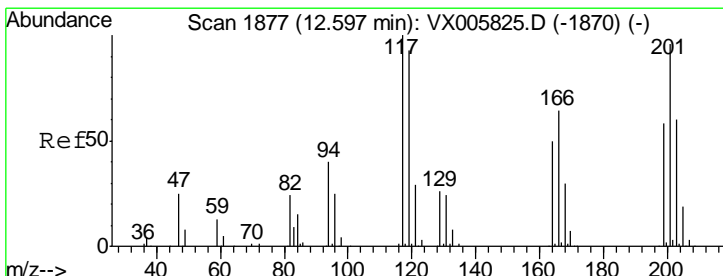
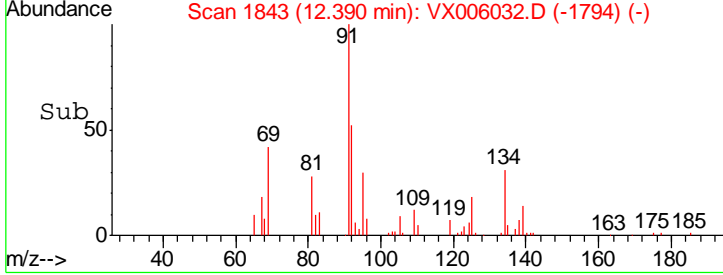
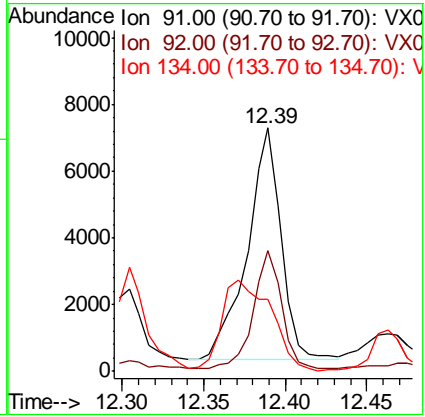
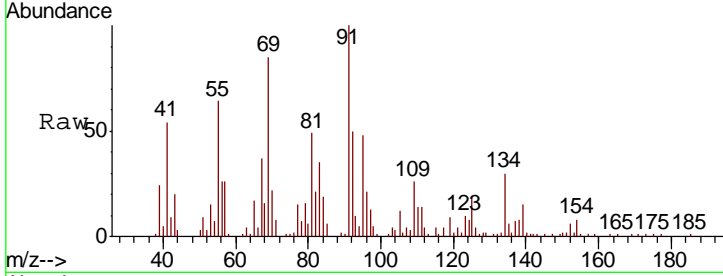


#89  
 n-Butylbenzene  
 Concen: 1.560 ug/l  
 RT: 12.39 min Scan# 1843  
 Delta R.T. -0.00 min  
 Lab File: VX006032.D  
 Acq: 15 Nov 2018 20:40

Instrument : MSVOA\_X  
 ClientSampled :

Tgt Ion: 91 Resp: 10079

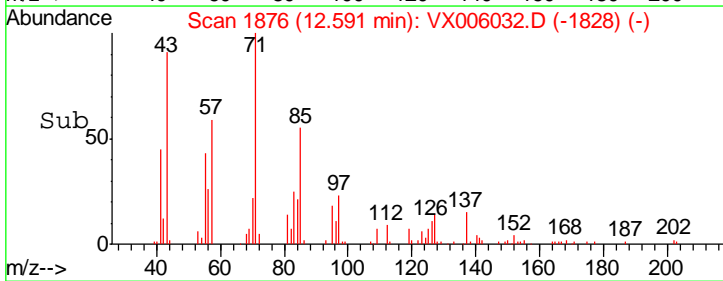
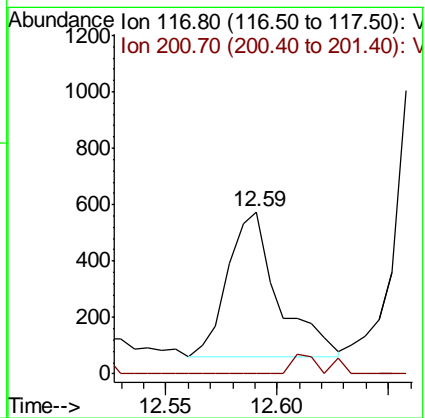
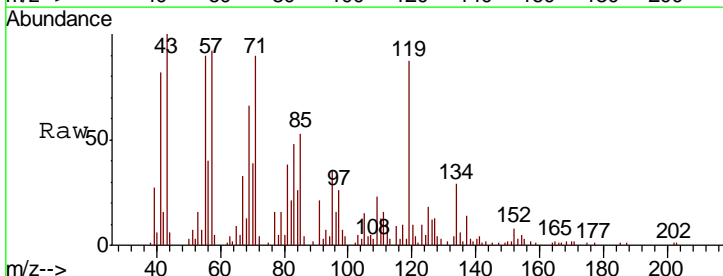
Ion	Ratio	Lower	Upper
91	100		
92	44.0	26.1	78.2
134	57.6	13.1	39.3#

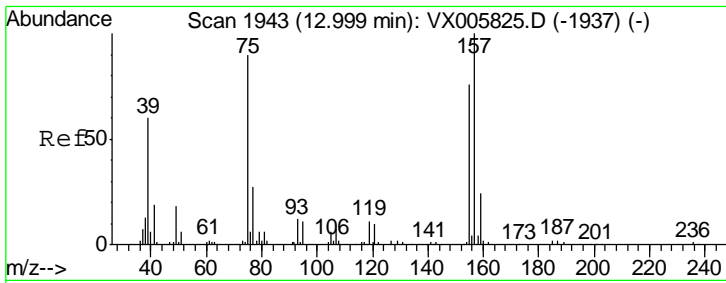


#90  
 Hexachloroethane  
 Concen: 0.691 ug/l  
 RT: 12.59 min Scan# 1876  
 Delta R.T. -0.01 min  
 Lab File: VX006032.D  
 Acq: 15 Nov 2018 20:40

Tgt Ion: 117 Resp: 804

Ion	Ratio	Lower	Upper
117	100		
201	8.6	47.9	143.6#

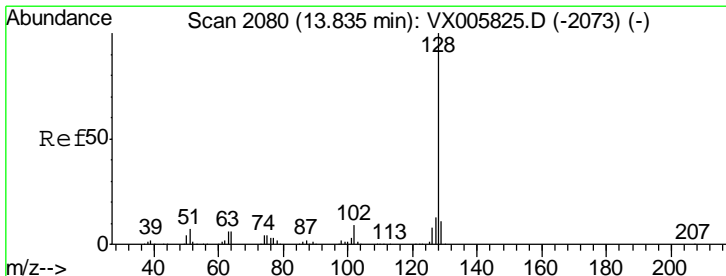
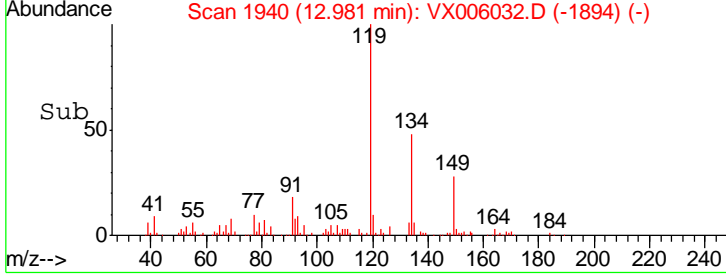
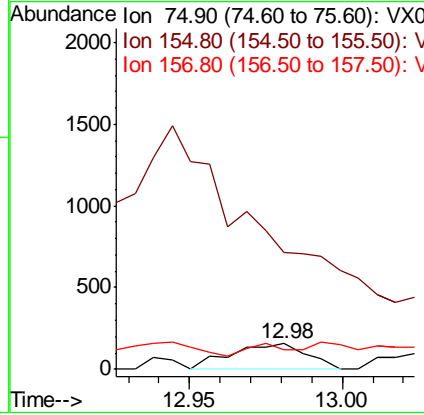
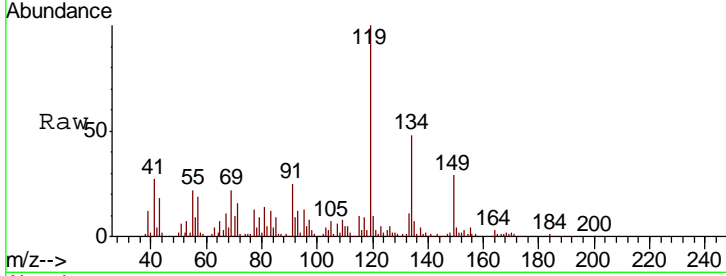




#92  
 1,2-Dibromo-3-Chloropropane  
 Concen: 0.404 ug/l  
 RT: 12.98 min Scan# 1940  
 Delta R.T. -0.02 min  
 Lab File: VX006032.D  
 Acq: 15 Nov 2018 20:40

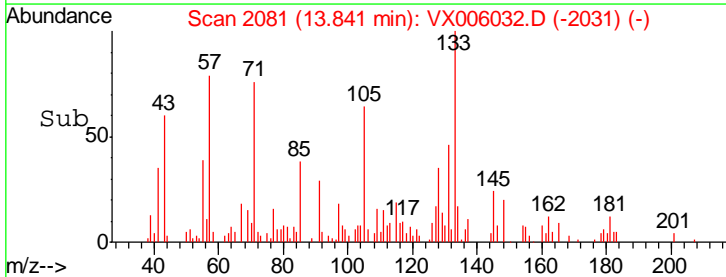
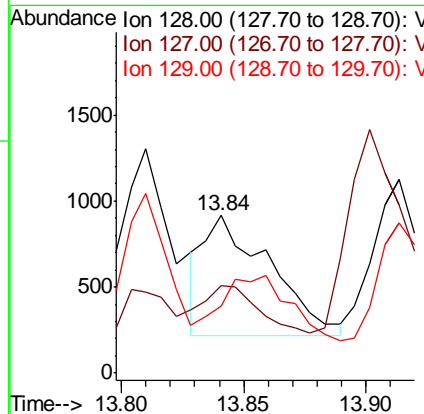
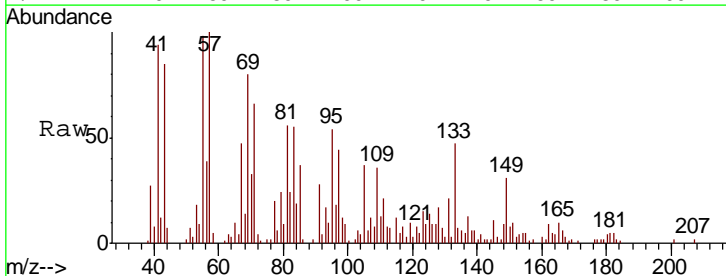
Instrument : MSVOA\_X  
 ClientSampled :

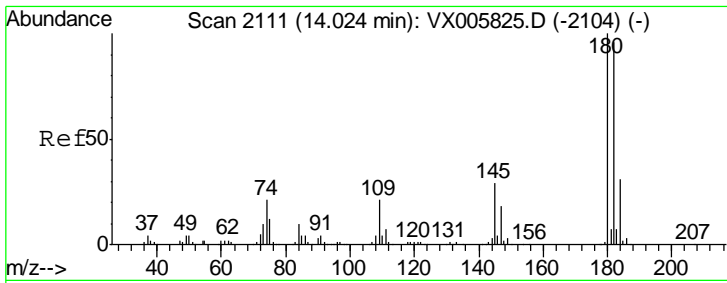
Tgt Ion	Resp	Lower	Upper
75	100		
155	0.0	45.4	136.1#
157	21.4	57.4	172.0#



#95  
 Naphthalene  
 Concen: 1.314 ug/l  
 RT: 13.84 min Scan# 2081  
 Delta R.T. 0.01 min  
 Lab File: VX006032.D  
 Acq: 15 Nov 2018 20:40

Tgt Ion	Resp	Lower	Upper
128	100		
127	42.2	10.4	15.6#
129	51.6	8.7	13.1#





#96  
 1,2,3-Trichlorobenzene  
 Concen: 0.309 ug/l  
 RT: 14.03 min Scan# 2112  
 Delta R.T. 0.01 min  
 Lab File: VX006032.D  
 Acq: 15 Nov 2018 20:40

Instrument :  
 MSVOA\_X  
 ClientSampled :

Tot Ion	Resp	Lower	Upper
180	100		
182	28.7	48.0	144.2#
145	665.8	15.1	45.3#

