

Data Path : Z:\voasrv\HPCHEM1\MSVOA X\Data\VX111518\  
 Data File : VX006024.D  
 Acq On : 15 Nov 2018 17:07  
 Operator : JC/MD  
 Sample : J5860-16MEDL 10X  
 Misc : 6.03µ/5mL/100uL/5.00mL/MSVOA\_X/MEOH  
 ALS Vial : 9 Sample Multiplier: 1

**Instrument :**  
 MSVOA\_X  
**ClientSampled :**  
 EP2-SB-106(2-4)MEDL

Quant Time: Nov 21 00:21:14 2018  
 Quant Method : Z:\VOASRV\HPCHEM1\MSVOA\_X\METHOD\82X110718W.M  
 Quant Title : SW846 8260  
 QLast Update : Wed Nov 07 14:40:53 2018  
 Response via : Initial Calibration

Internal Standards	R.T.	QIon	Response	Conc	Units	Dev(Min)
1) Pentafluorobenzene	5.66	168	131760	50.00	µg/l	0.00
34) 1,4-Difluorobenzene	6.86	114	191574	50.00	µg/l	0.00
63) Chlorobenzene-d5	10.12	117	179663	50.00	µg/l	0.00
72) 1,4-Dichlorobenzene-d4	12.08	152	96453	50.00	µg/l	0.00

System Monitoring Compounds

33) 1,2-Dichloroethane-d4	6.07	65	76783	50.69	µg/l	0.00
Spiked Amount			50.000	Recovery =		101.38%
35) Dibromofluoromethane	5.50	113	60217	46.21	µg/l	0.00
Spiked Amount			50.000	Recovery =		92.42%
50) Toluene-d8	8.71	98	238261	55.00	µg/l	0.00
Spiked Amount			50.000	Recovery =		110.00%
62) 4-Bromofluorobenzene	11.14	95	90548	58.14	µg/l	0.00
Spiked Amount			50.000	Recovery =		116.28%

Target Compounds

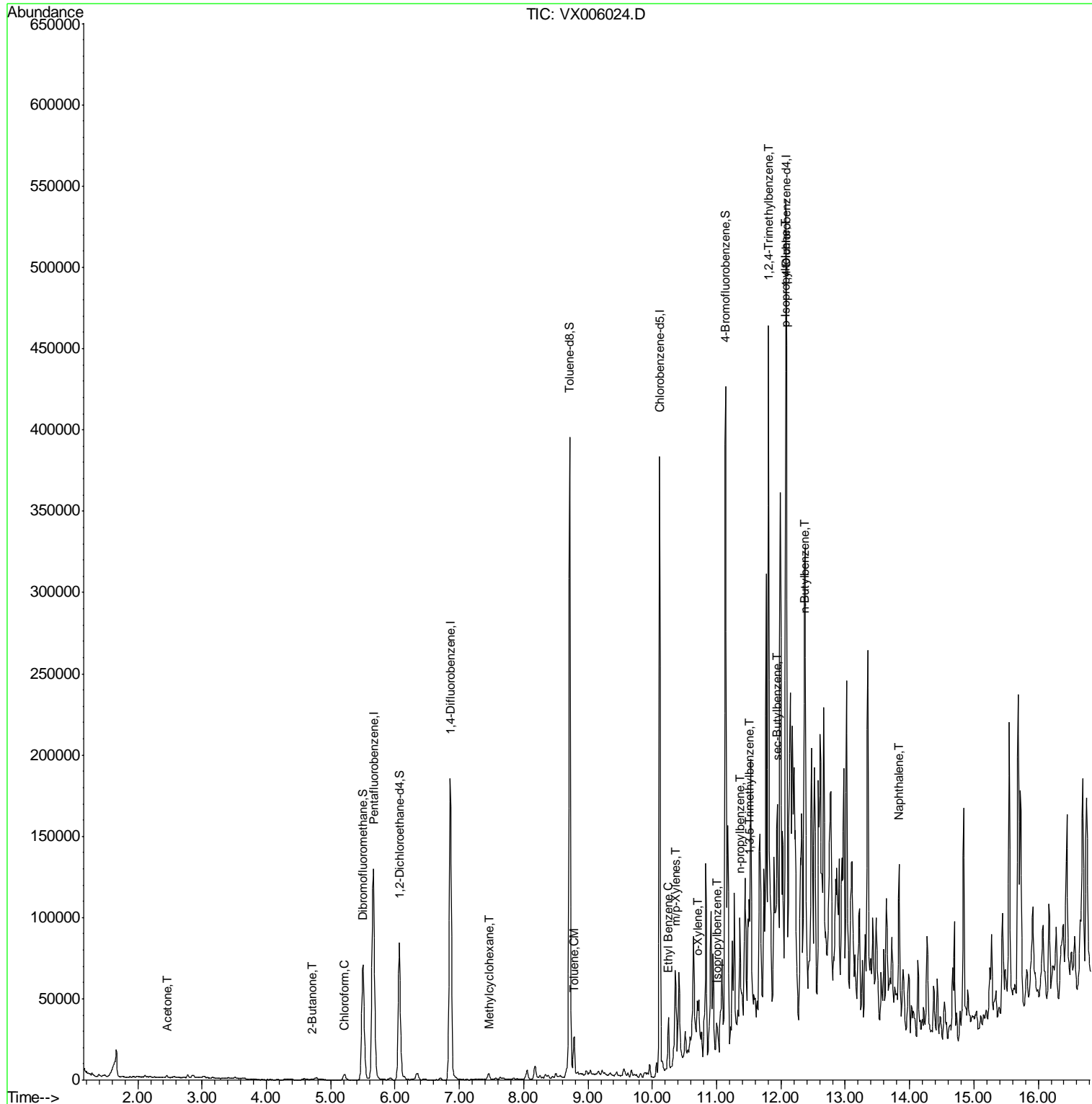
						Qvalue
16) Acetone	2.45	43	1173	1.438	µg/l	98
25) 2-Butanone	4.71	43	1498	1.168	µg/l	98
30) Chloroform	5.21	83	3985	1.699	µg/l	96
39) Methylcyclohexane	7.46	83	1514	0.809	µg/l #	88
52) Toluene	8.79	92	8588	2.854	µg/l	100
67) Ethyl Benzene	10.25	91	14309	2.479	µg/l	98
68) m/p-Xylenes	10.36	106	10517	4.777	µg/l	97
69) o-Xylene	10.70	106	4625	2.343	µg/l	95
73) Isopropylbenzene	11.02	105	4863	0.872	µg/l	93
78) n-propylbenzene	11.36	91	21229	3.229	µg/l	99
80) 1,3,5-Trimethylbenzene	11.51	105	28223	5.954	µg/l	98
84) 1,2,4-Trimethylbenzene	11.80	105	131897	25.155	µg/l	99
85) sec-Butylbenzene	11.94	105	11705	1.996	µg/l	99
86) p-Isopropyltoluene	12.07	119	17408	3.351	µg/l	100
89) n-Butylbenzene	12.38	91	28636	5.949	µg/l #	35
95) Naphthalene	13.83	128	64984	10.322	µg/l	98

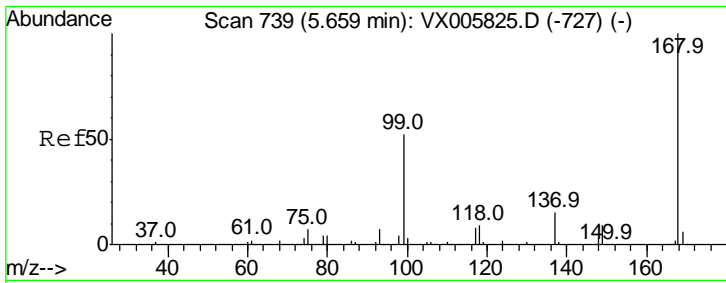
(#) = qualifier out of range (m) = manual integration (+) = signals summed

Data Path : Z:\voasrv\HPCHEM1\MSVOA X\Data\VX111518\  
 Data File : VX006024.D  
 Acq On : 15 Nov 2018 17:07  
 Operator : JC/MD  
 Sample : J5860-16MEDL 10X  
 Misc : 6.03µ/5mL/100uL/5.00mL/MSVOA\_X/MEOH  
 ALS Vial : 9 Sample Multiplier: 1

Instrument :  
 MSVOA\_X  
 ClientSampleId :  
 EP2-SB-106(2-4)MEDL

Quant Time: Nov 21 00:21:14 2018  
 Quant Method : Z:\VOASRV\HPCHEM1\MSVOA\_X\METHOD\82X110718W.M  
 Quant Title : SW846 8260  
 QLast Update : Wed Nov 07 14:40:53 2018  
 Response via : Initial Calibration

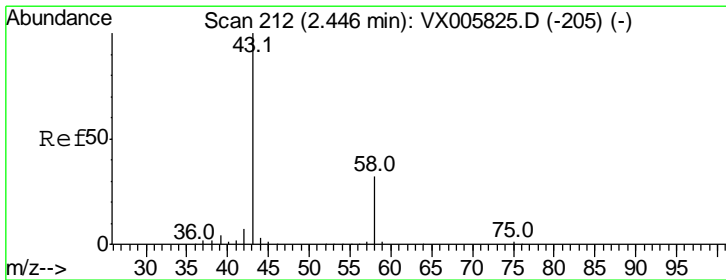
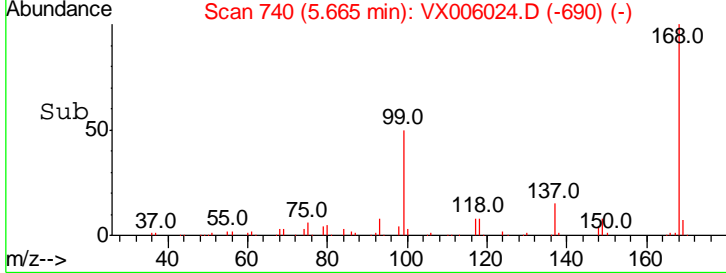
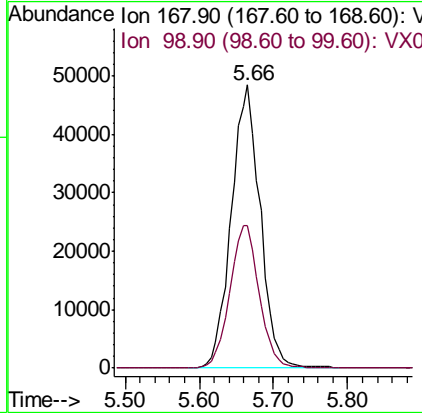
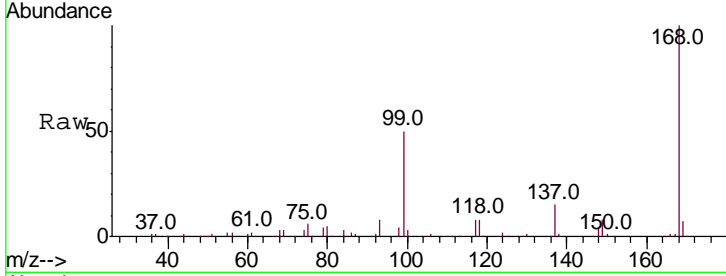




#1  
 Pentafluorobenzene  
 Concen: 50.000 ug/l  
 RT: 5.66 min Scan# 740  
 Delta R.T. 0.01 min  
 Lab File: VX006024.D  
 Acq: 15 Nov 2018 17:07

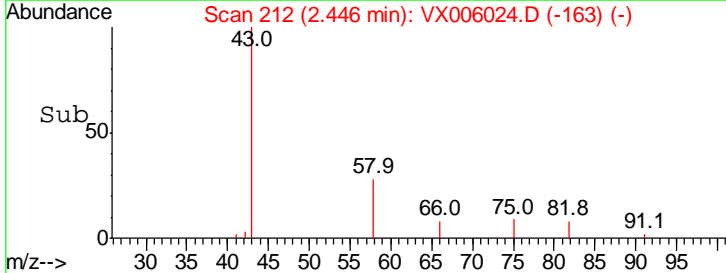
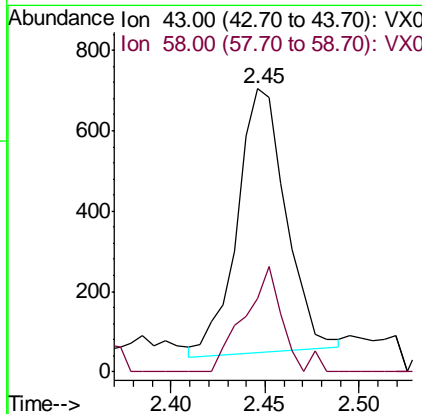
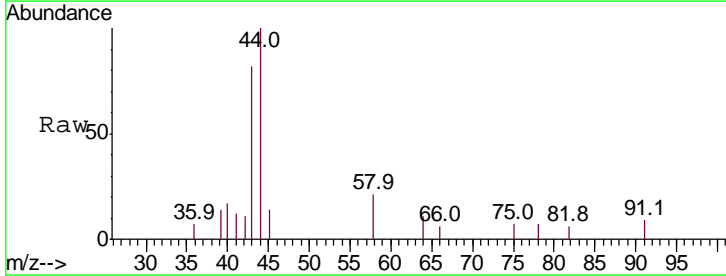
Instrument : MSVOA\_X  
 ClientSampled : EP2-SB-106(2-4)MEDL

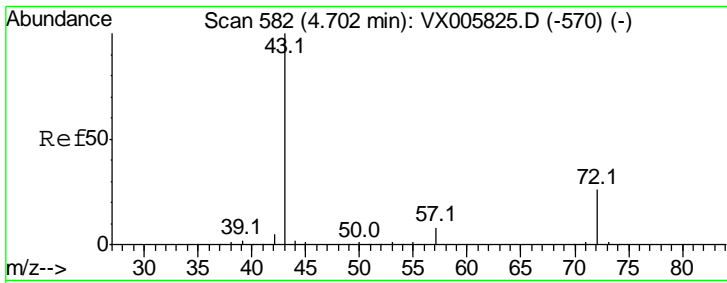
Tgt Ion:168 Resp: 131760  
 Ion Ratio Lower Upper  
 168 100  
 99 50.3 40.7 61.1



#16  
 Acetone  
 Concen: 1.438 ug/l  
 RT: 2.45 min Scan# 212  
 Delta R.T. -0.00 min  
 Lab File: VX006024.D  
 Acq: 15 Nov 2018 17:07

Tgt Ion: 43 Resp: 1173  
 Ion Ratio Lower Upper  
 43 100  
 58 28.5 23.8 35.6

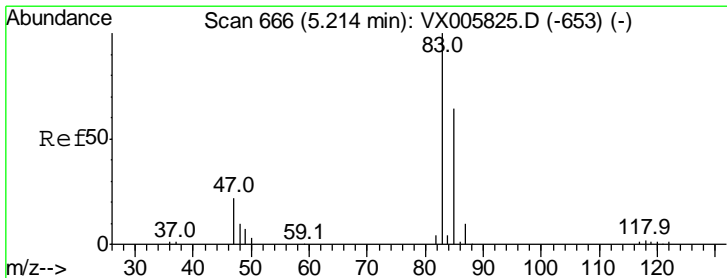
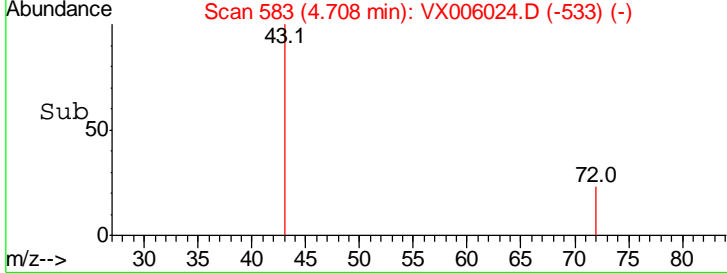
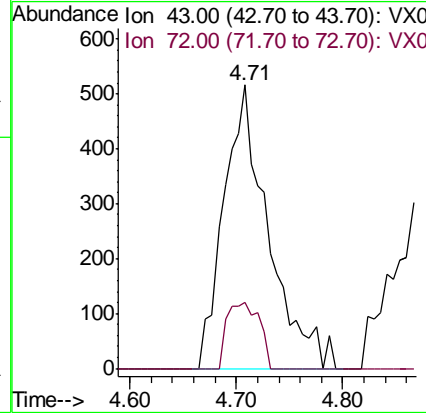
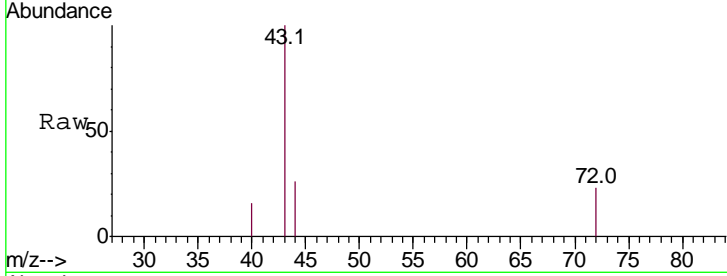




#25  
 2-Butanone  
 Concen: 1.168 ug/l  
 RT: 4.71 min Scan# 583  
 Delta R.T. 0.01 min  
 Lab File: VX006024.D  
 Acq: 15 Nov 2018 17:07

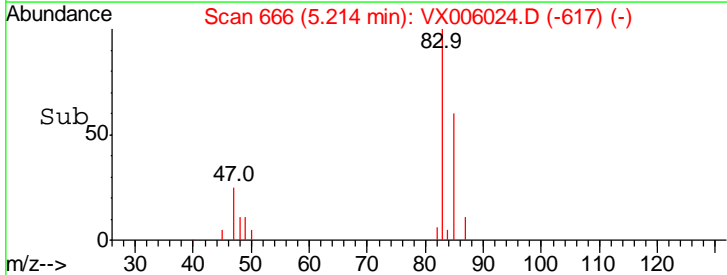
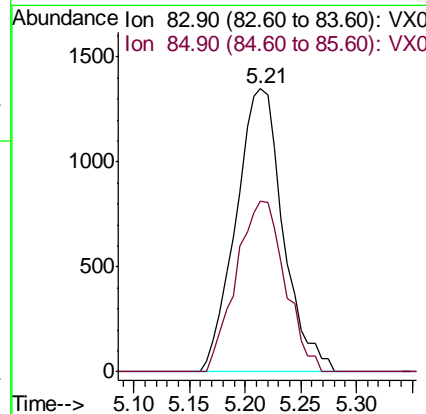
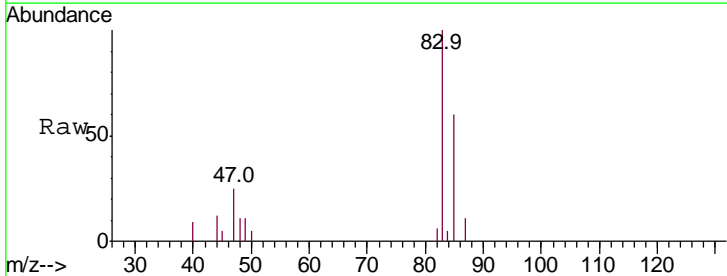
Instrument :  
 MSVOA\_X  
 ClientSampled :  
 EP2-SB-106(2-4)MEDL

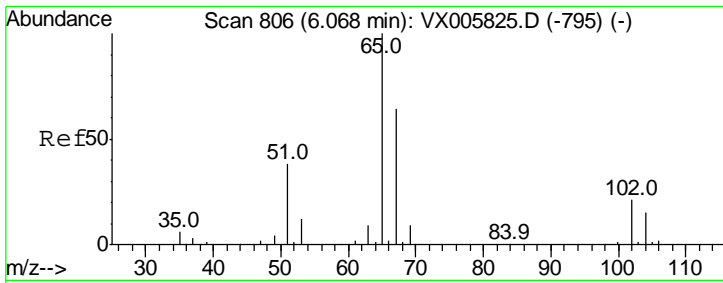
Tgt Ion: 43 Resp: 1498  
 Ion Ratio Lower Upper  
 43 100  
 72 23.3 19.2 28.8



#30  
 Chloroform  
 Concen: 1.699 ug/l  
 RT: 5.21 min Scan# 666  
 Delta R.T. -0.00 min  
 Lab File: VX006024.D  
 Acq: 15 Nov 2018 17:07

Tgt Ion: 83 Resp: 3985  
 Ion Ratio Lower Upper  
 83 100  
 85 60.5 50.6 76.0

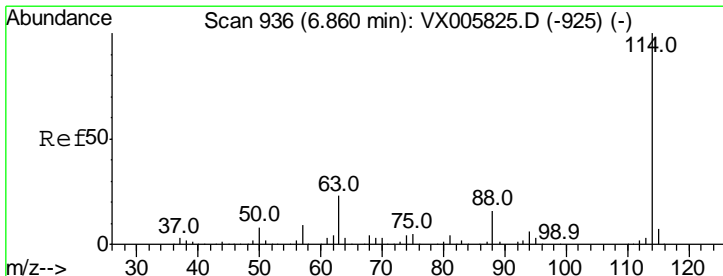
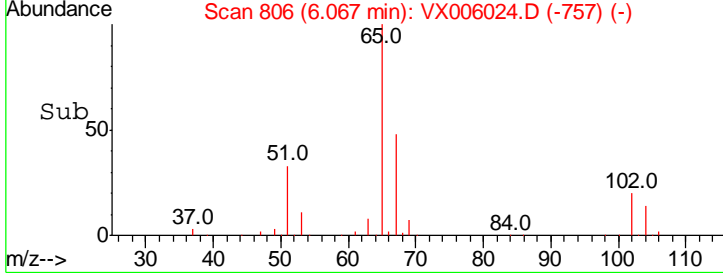
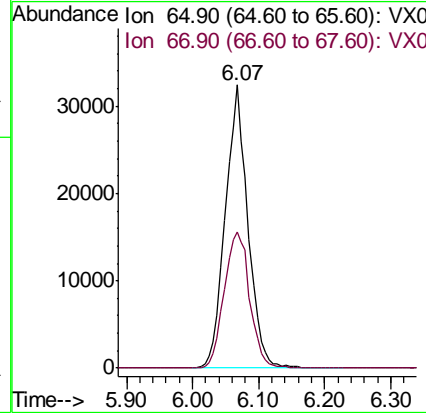
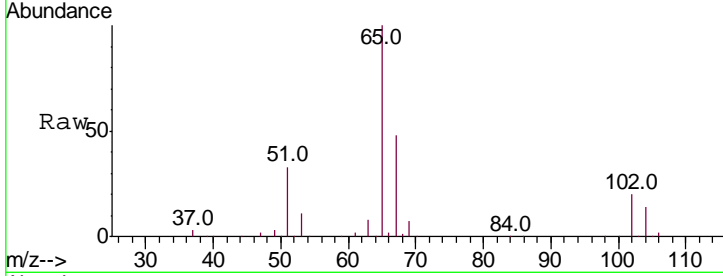




#33  
 1,2-Dichloroethane-d4  
 Concen: 50.690 ug/l  
 RT: 6.07 min Scan# 806  
 Delta R.T. -0.00 min  
 Lab File: VX006024.D  
 Acq: 15 Nov 2018 17:07

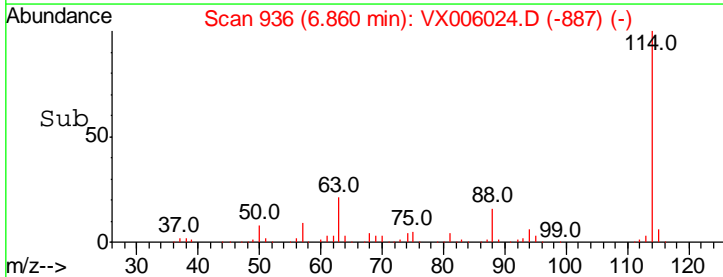
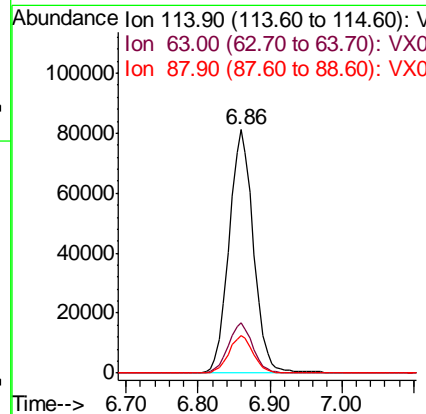
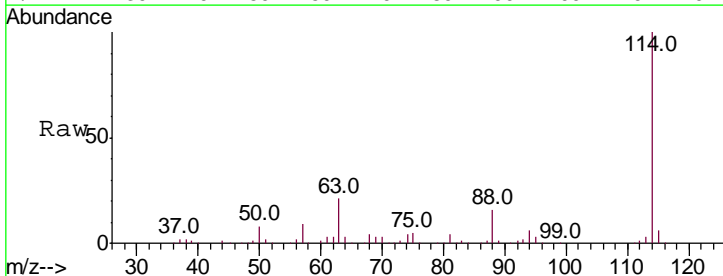
**Instrument :**  
 MSVOA\_X  
**ClientSampled :**  
 EP2-SB-106(2-4)MEDL

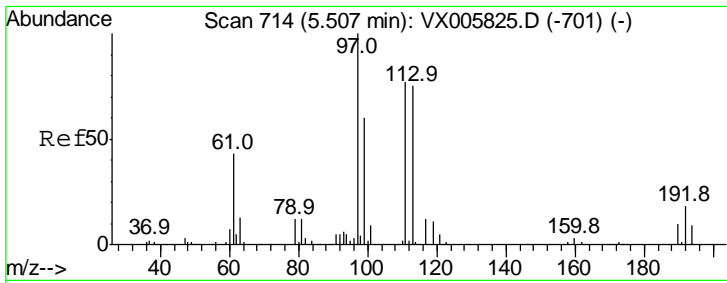
Tgt Ion	Resp	Lower	Upper
65	100		
67	54.1	0.0	105.0



#34  
 1,4-Difluorobenzene  
 Concen: 50.000 ug/l  
 RT: 6.86 min Scan# 936  
 Delta R.T. -0.00 min  
 Lab File: VX006024.D  
 Acq: 15 Nov 2018 17:07

Tgt Ion	Resp	Lower	Upper
114	100		
63	20.6	0.0	42.8
88	15.5	0.0	31.2

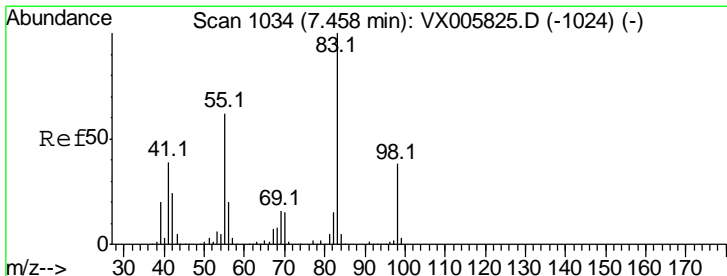
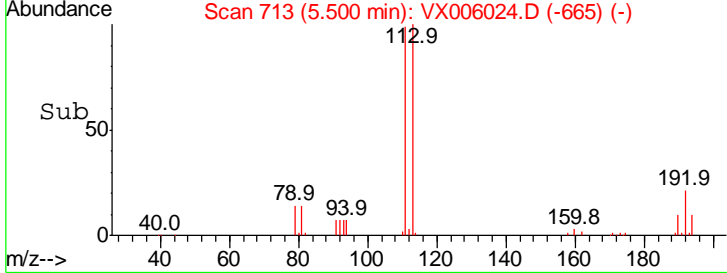
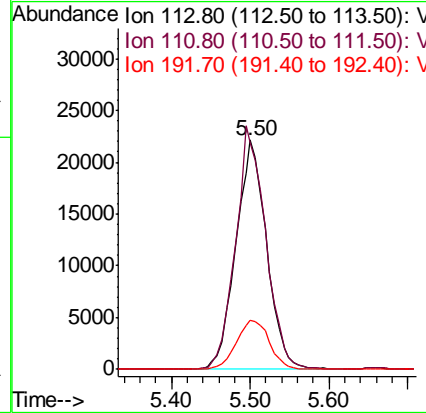
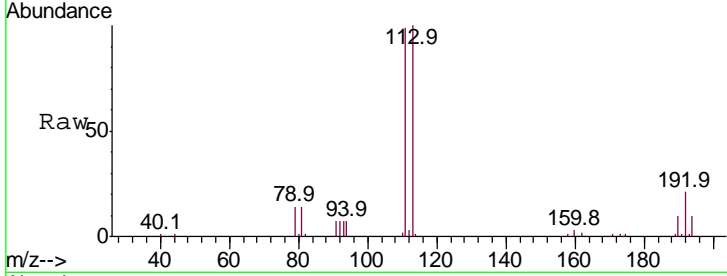




#35  
 Dibromofluoromethane  
 Concen: 46.214 ug/l  
 RT: 5.50 min Scan# 713  
 Delta R.T. -0.01 min  
 Lab File: VX006024.D  
 Acq: 15 Nov 2018 17:07

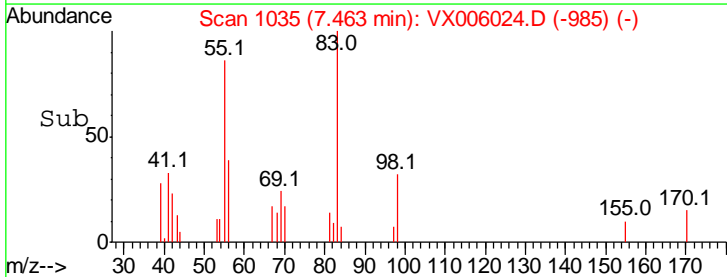
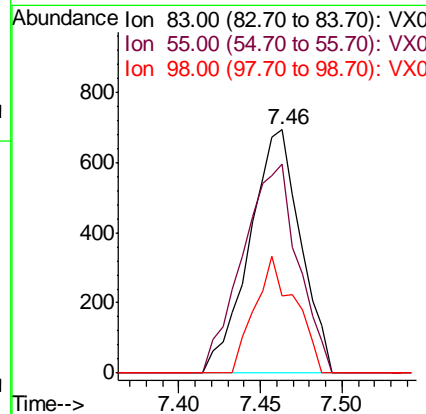
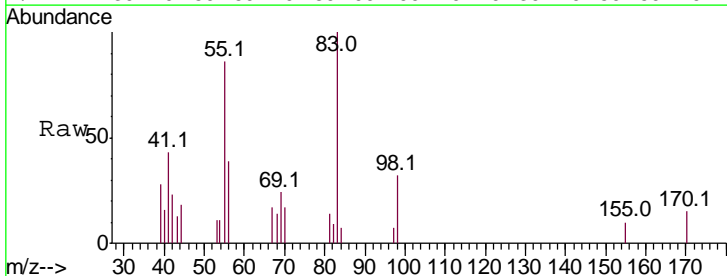
**Instrument :**  
 MSVOA\_X  
**ClientSampled :**  
 EP2-SB-106(2-4)MEDL

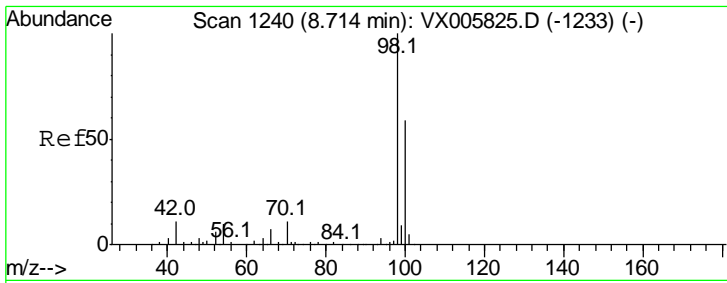
Tgt Ion	Resp	Lower	Upper
113	100		
111	103.8	82.3	123.5
192	22.8	17.9	26.9



#39  
 Methylcyclohexane  
 Concen: 0.809 ug/l  
 RT: 7.46 min Scan# 1035  
 Delta R.T. 0.01 min  
 Lab File: VX006024.D  
 Acq: 15 Nov 2018 17:07

Tgt Ion	Resp	Lower	Upper
83	100		
55	86.0	63.7	95.5
98	31.6	36.2	54.2#

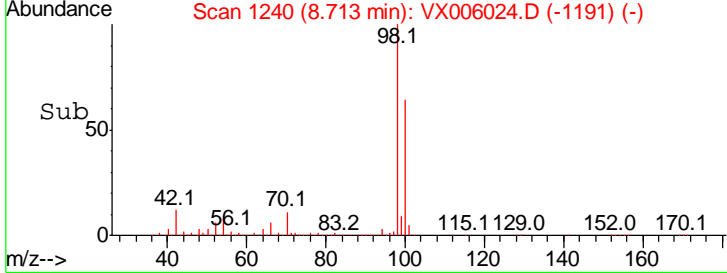
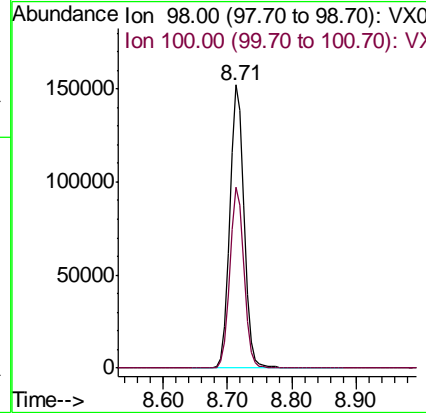
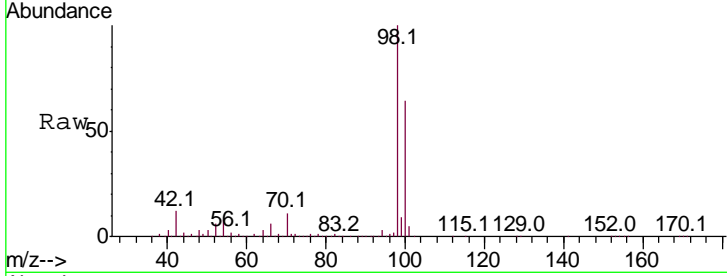




#50  
 Toluene-d8  
 Concen: 55.002 ug/l  
 RT: 8.71 min Scan# 1240  
 Delta R.T. -0.00 min  
 Lab File: VX006024.D  
 Acq: 15 Nov 2018 17:07

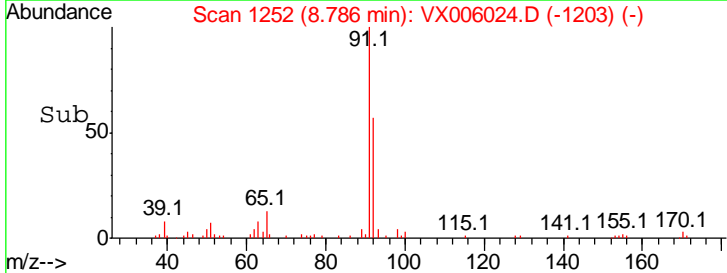
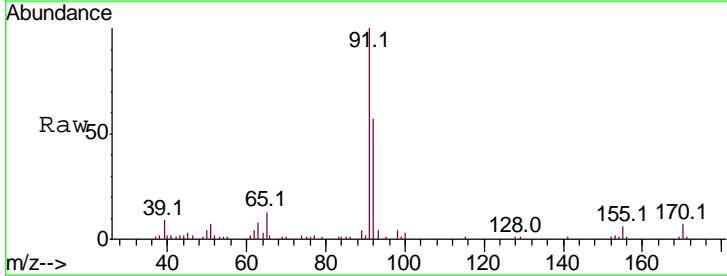
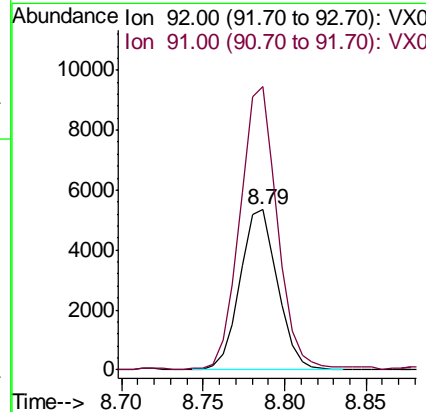
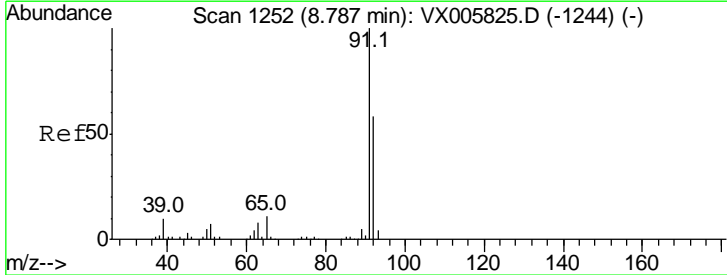
**Instrument :**  
 MSVOA\_X  
**ClientSampled :**  
 EP2-SB-106(2-4)MEDL

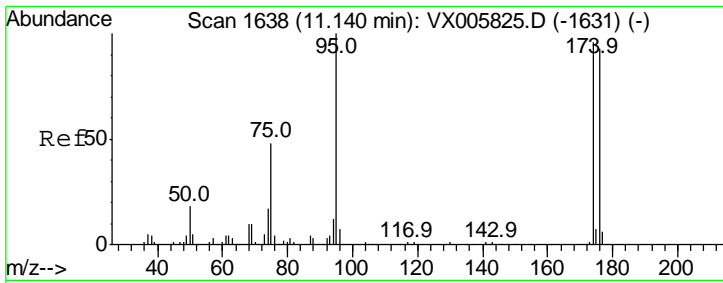
Tgt Ion: 98 Resp: 238261  
 Ion Ratio Lower Upper  
 98 100  
 100 63.6 51.3 76.9



#52  
 Toluene  
 Concen: 2.854 ug/l  
 RT: 8.79 min Scan# 1252  
 Delta R.T. -0.00 min  
 Lab File: VX006024.D  
 Acq: 15 Nov 2018 17:07

Tgt Ion: 92 Resp: 8588  
 Ion Ratio Lower Upper  
 92 100  
 91 175.6 140.4 210.6

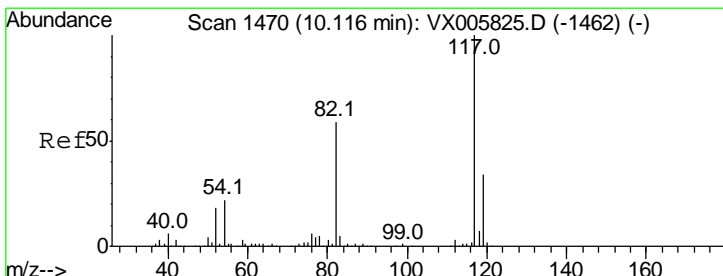
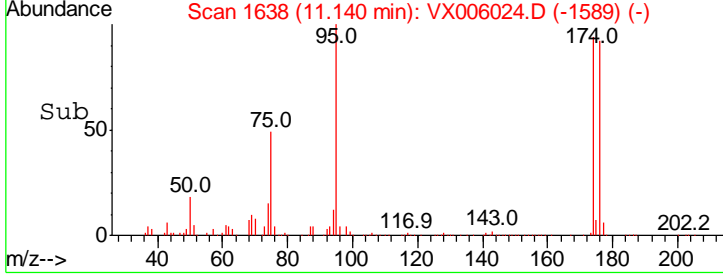
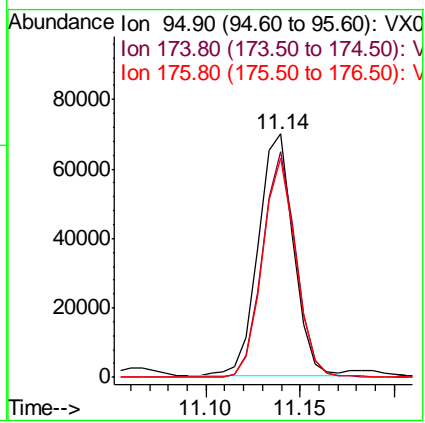
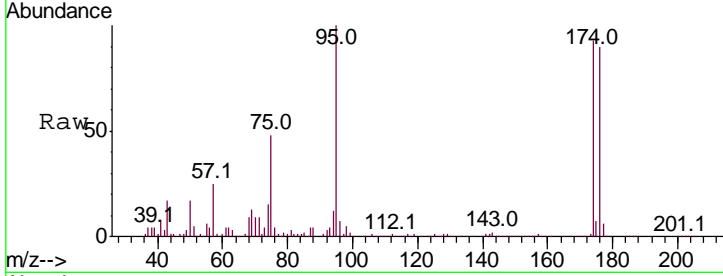




#62  
 4-Bromofluorobenzene  
 Concen: 58.138 ug/l  
 RT: 11.14 min Scan# 1638  
 Delta R.T. -0.00 min  
 Lab File: VX006024.D  
 Acq: 15 Nov 2018 17:07

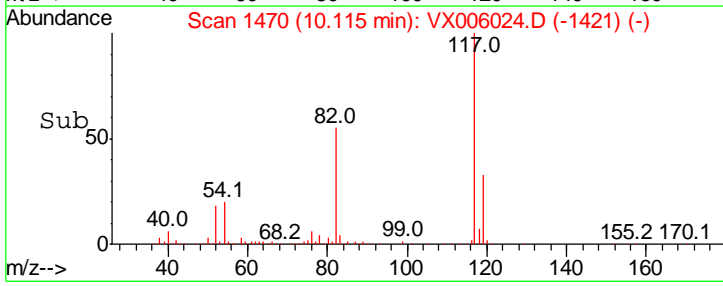
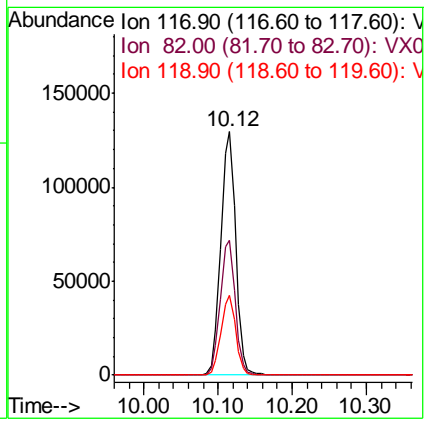
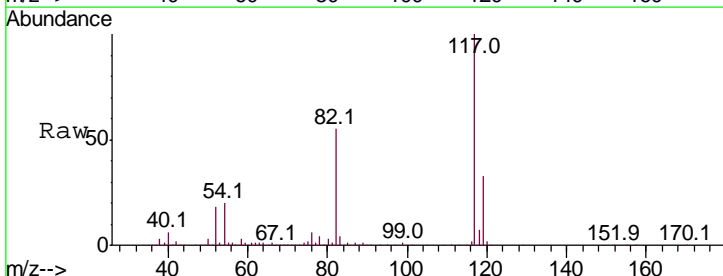
Instrument : MSVOA\_X  
 ClientSampled : EP2-SB-106(2-4)MEDL

Tgt Ion	Resp	Lower	Upper
95	100		
174	88.7	0.0	184.4
176	86.5	0.0	177.4

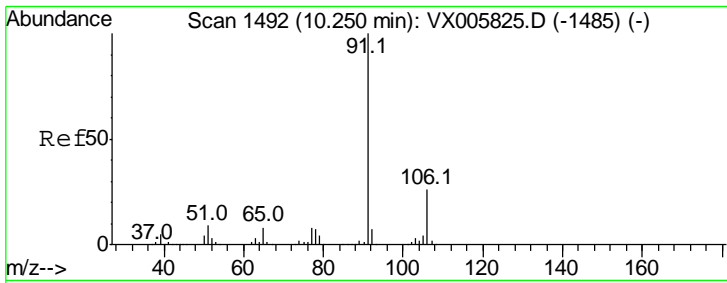


#63  
 Chlorobenzene-d5  
 Concen: 50.000 ug/l  
 RT: 10.12 min Scan# 1470  
 Delta R.T. -0.00 min  
 Lab File: VX006024.D  
 Acq: 15 Nov 2018 17:07

Tgt Ion	Resp	Lower	Upper
117	100		
82	55.3	44.1	66.1
119	32.8	26.2	39.2



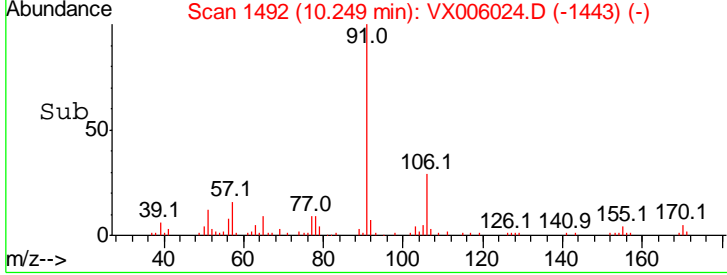
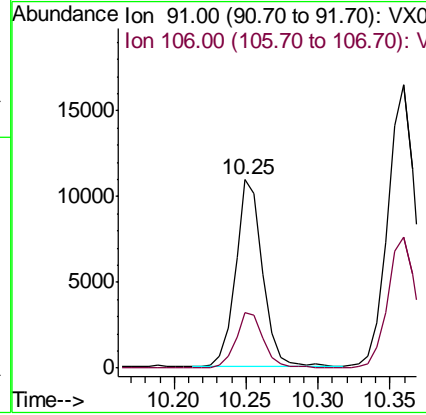
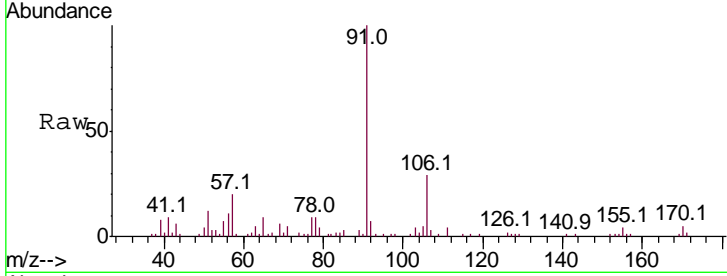




#67  
 Ethyl Benzene  
 Concen: 2.479 ug/l  
 RT: 10.25 min Scan# 1492  
 Delta R.T. -0.00 min  
 Lab File: VX006024.D  
 Acq: 15 Nov 2018 17:07

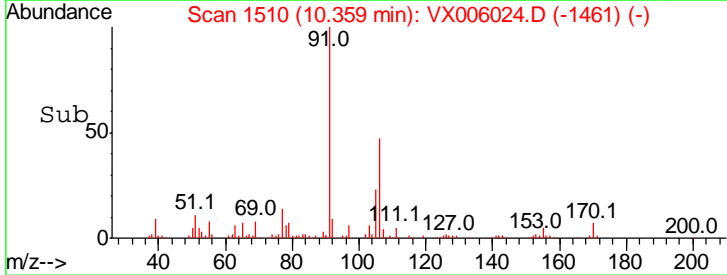
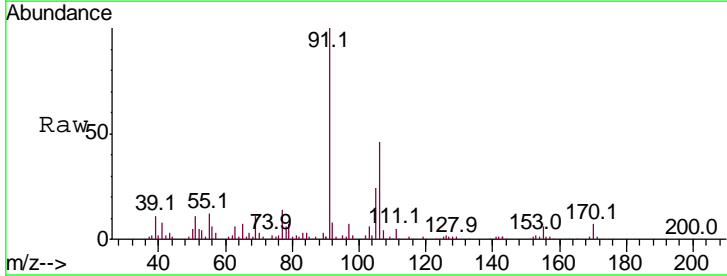
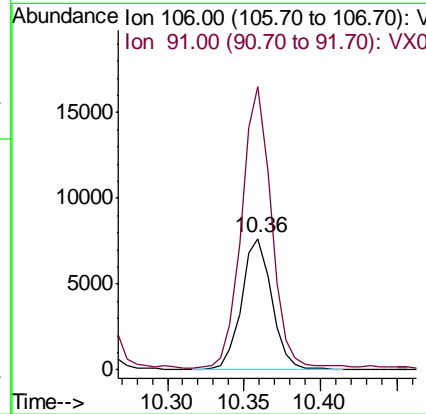
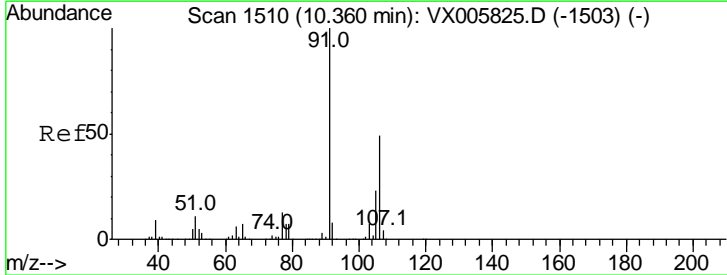
Instrument : MSVOA\_X  
 ClientSampled : EP2-SB-106(2-4)MEDL

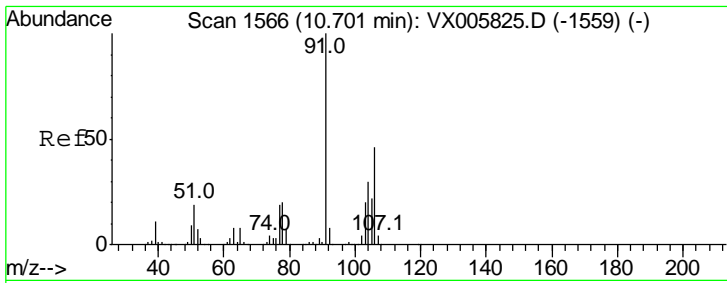
Tgt Ion	Resp	Lower	Upper
91	14309		
106	29.4	24.4	36.6



#68  
 m/p-Xylenes  
 Concen: 4.777 ug/l  
 RT: 10.36 min Scan# 1510  
 Delta R.T. -0.00 min  
 Lab File: VX006024.D  
 Acq: 15 Nov 2018 17:07

Tgt Ion	Resp	Lower	Upper
106	10517		
91	210.1	164.2	246.4

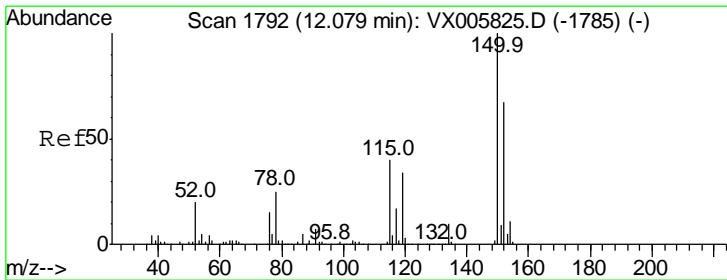
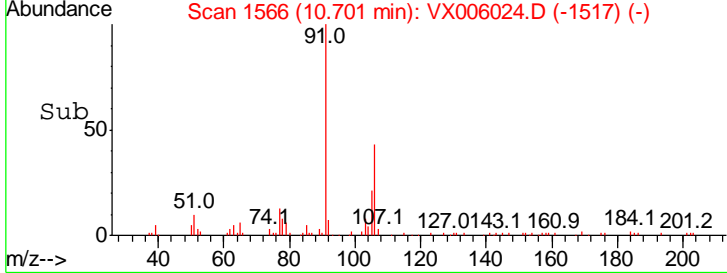
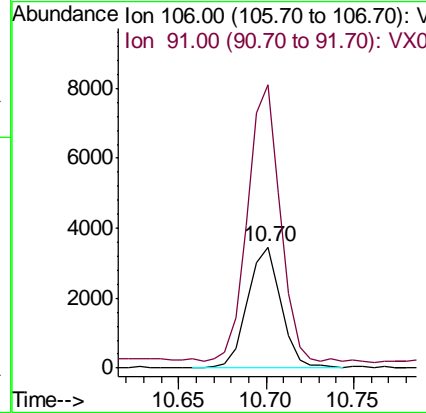
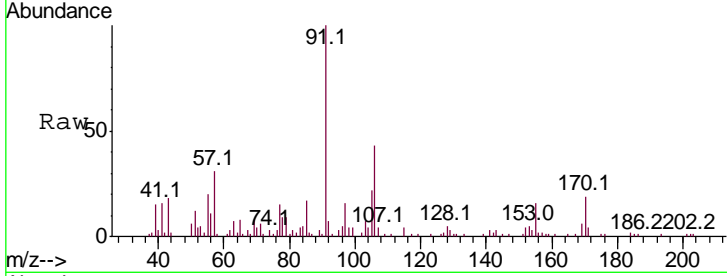




#69  
 o-Xylene  
 Concen: 2.343 ug/l  
 RT: 10.70 min Scan# 1566  
 Delta R.T. -0.00 min  
 Lab File: VX006024.D  
 Acq: 15 Nov 2018 17:07

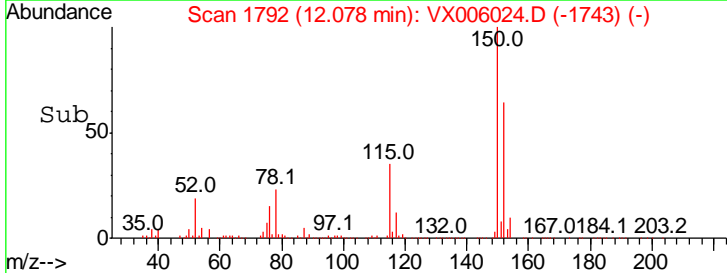
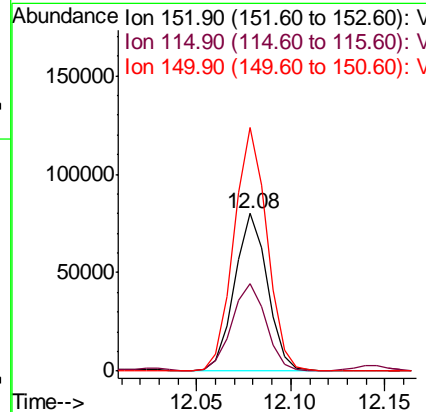
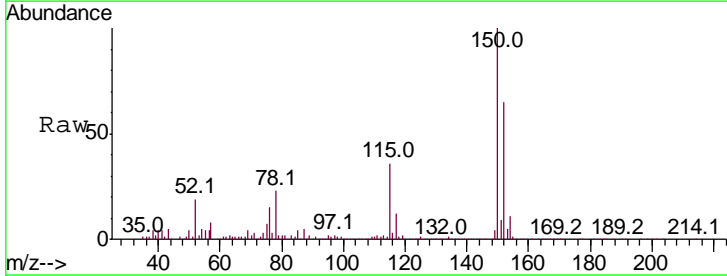
Instrument : MSVOA\_X  
 ClientSampled : EP2-SB-106(2-4)MEDL

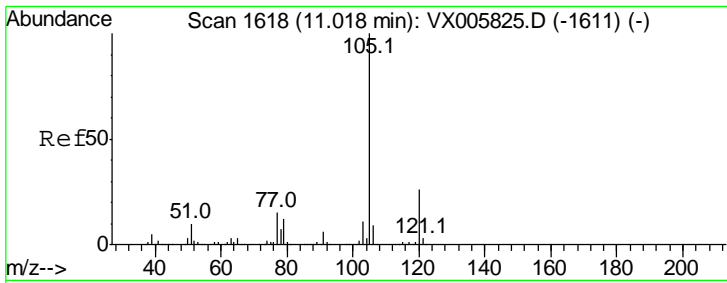
Tgt Ion	Resp	Lower	Upper
106	4625		
106	100		
91	225.0	108.5	325.5



#72  
 1,4-Dichlorobenzene-d4  
 Concen: 50.000 ug/l  
 RT: 12.08 min Scan# 1792  
 Delta R.T. -0.00 min  
 Lab File: VX006024.D  
 Acq: 15 Nov 2018 17:07

Tgt Ion	Resp	Lower	Upper
152	96453		
152	100		
115	57.1	39.4	118.1
150	156.2	0.0	346.4

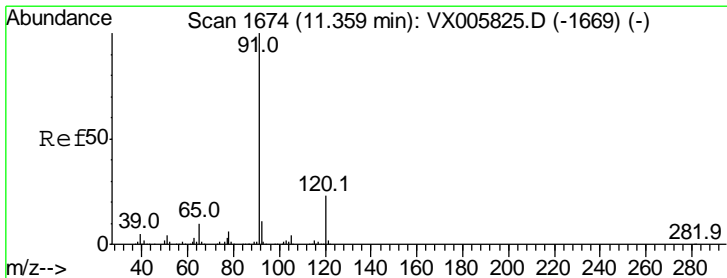
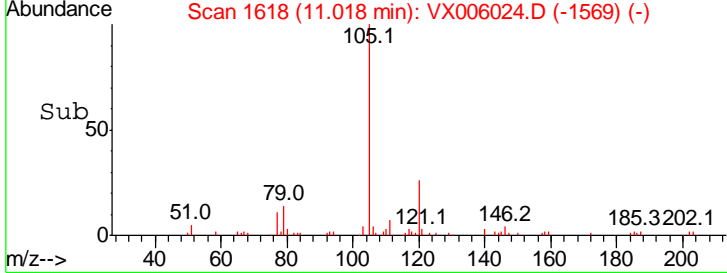
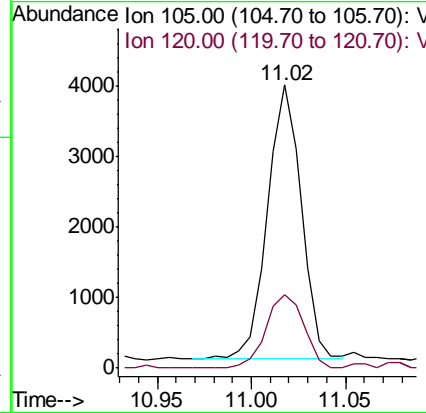
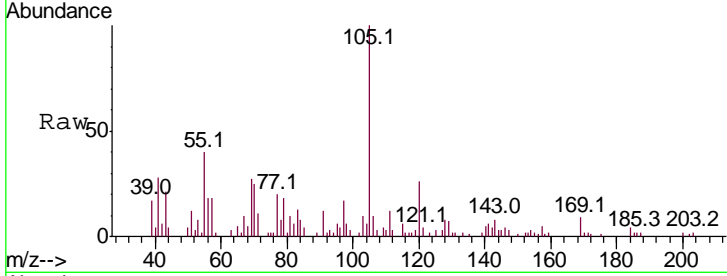




#73  
 Isopropylbenzene  
 Concen: 0.872 ug/l  
 RT: 11.02 min Scan# 1618  
 Delta R.T. -0.00 min  
 Lab File: VX006024.D  
 Acq: 15 Nov 2018 17:07

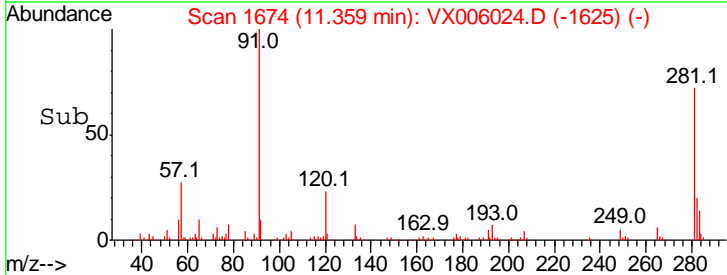
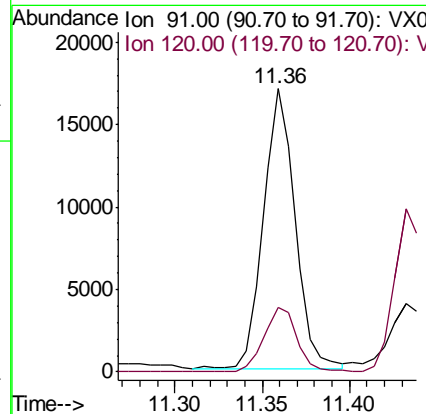
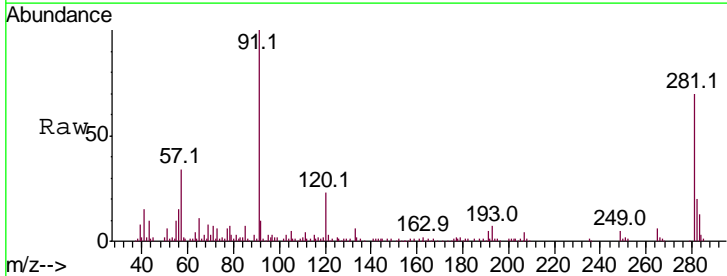
Instrument : MSVOA\_X  
 ClientSampled : EP2-SB-106(2-4)MEDL

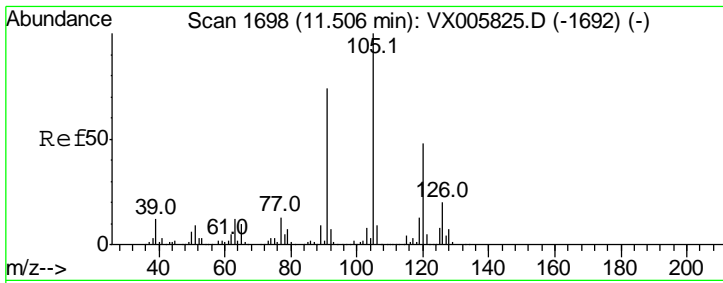
Tgt Ion	Resp	Lower	Upper
105	100		
120	29.7	13.1	39.3



#78  
 n-propylbenzene  
 Concen: 3.229 ug/l  
 RT: 11.36 min Scan# 1674  
 Delta R.T. -0.00 min  
 Lab File: VX006024.D  
 Acq: 15 Nov 2018 17:07

Tgt Ion	Resp	Lower	Upper
91	100		
120	24.4	11.9	35.5

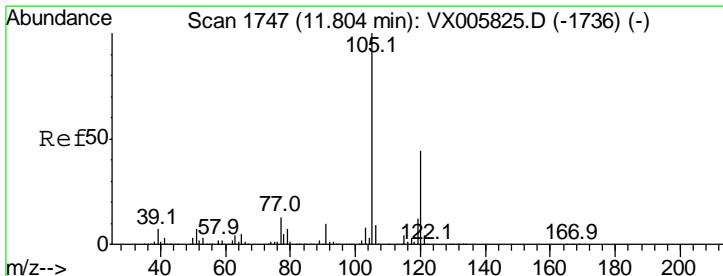
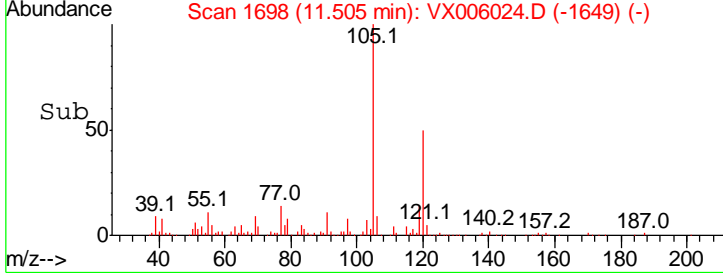
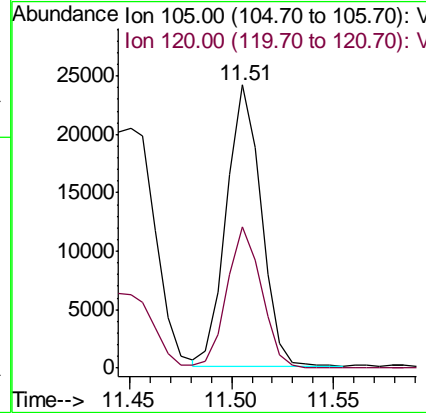
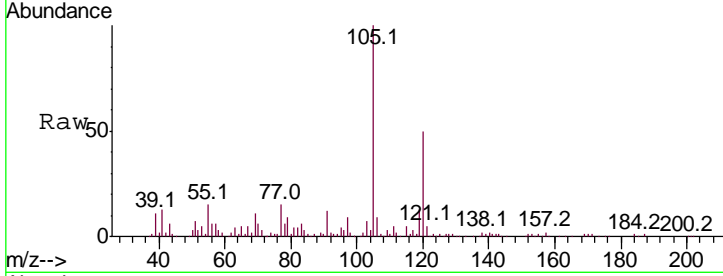




#80  
 1,3,5-Trimethylbenzene  
 Concen: 5.954 ug/l  
 RT: 11.51 min Scan# 1698  
 Delta R.T. -0.00 min  
 Lab File: VX006024.D  
 Acq: 15 Nov 2018 17:07

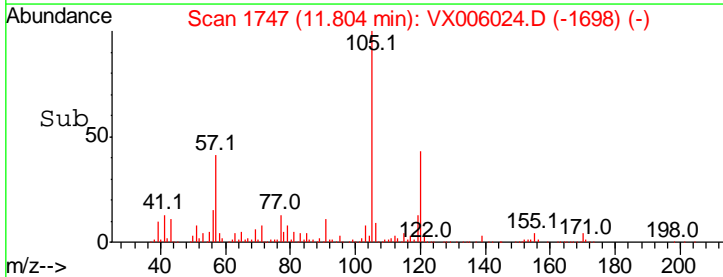
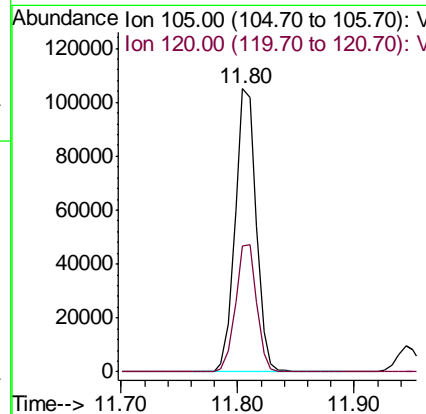
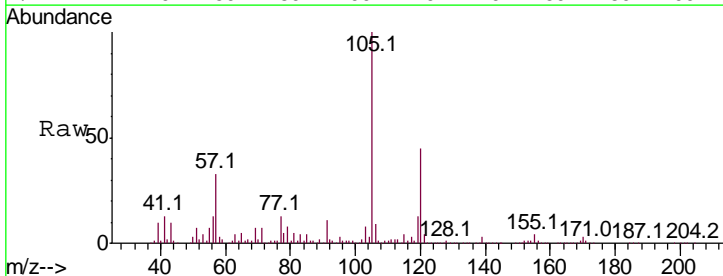
Instrument : MSVOA\_X  
 ClientSampled : EP2-SB-106(2-4)MEDL

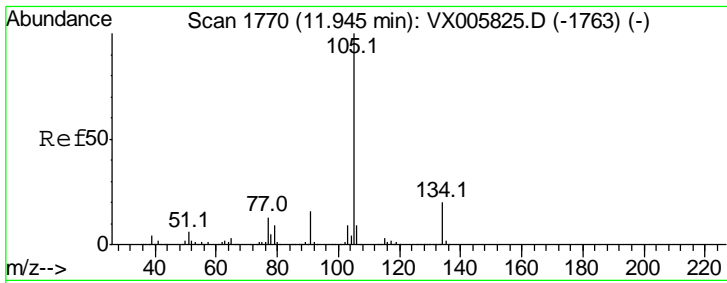
Tgt Ion	Resp	Lower	Upper
105	100		
120	49.6	24.1	72.2



#84  
 1,2,4-Trimethylbenzene  
 Concen: 25.155 ug/l  
 RT: 11.80 min Scan# 1747  
 Delta R.T. 0.00 min  
 Lab File: VX006024.D  
 Acq: 15 Nov 2018 17:07

Tgt Ion	Resp	Lower	Upper
105	100		
120	45.5	22.4	67.0

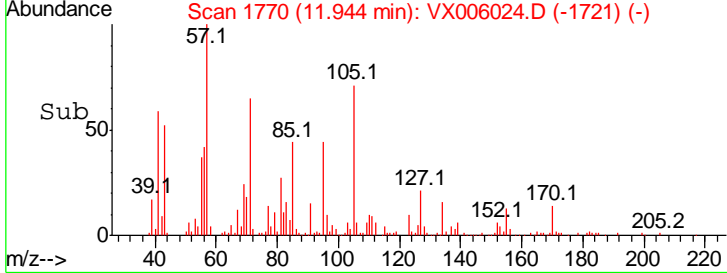
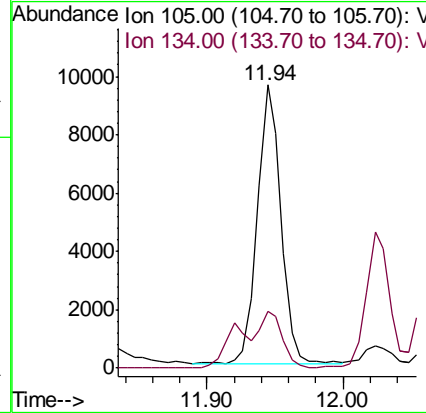
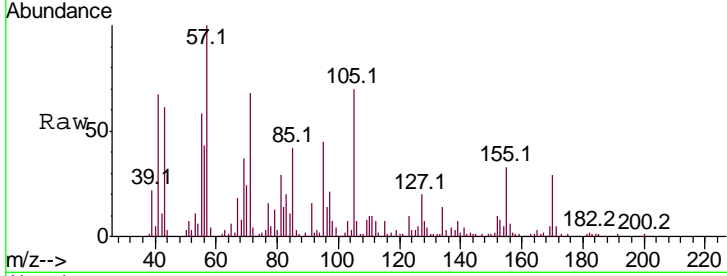




#85  
 sec-Butylbenzene  
 Concen: 1.996 ug/l  
 RT: 11.94 min Scan# 1770  
 Delta R.T. -0.00 min  
 Lab File: VX006024.D  
 Acq: 15 Nov 2018 17:07

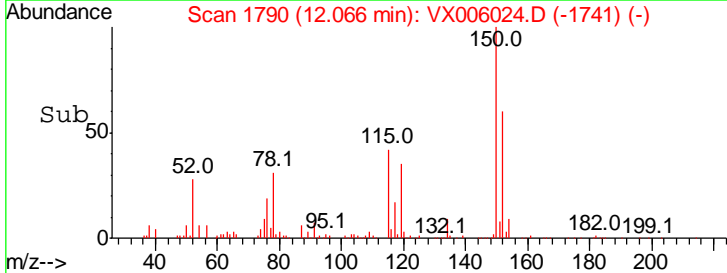
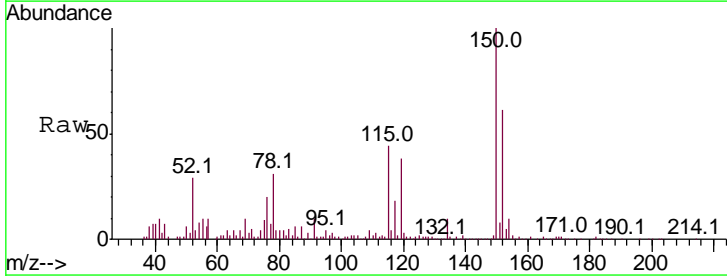
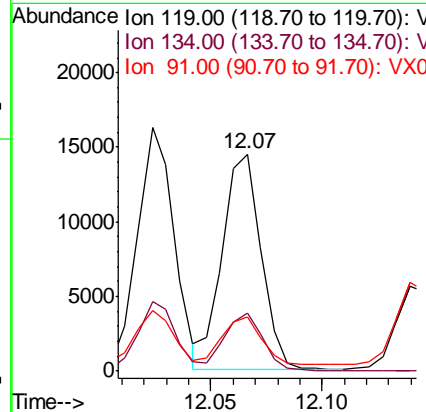
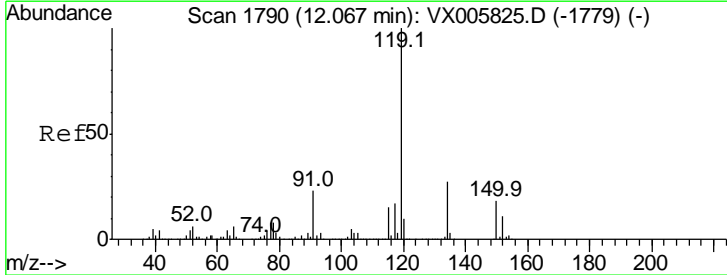
Instrument : MSVOA\_X  
 ClientSampled : EP2-SB-106(2-4)MEDL

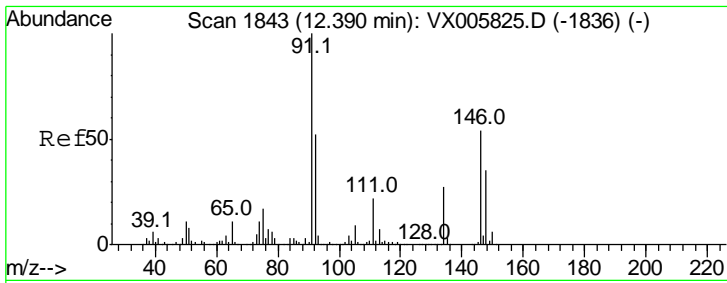
Tgt Ion	Resp	Lower	Upper
105	11705		
105	100		
134	20.0	10.2	30.4



#86  
 p-Isopropyltoluene  
 Concen: 3.351 ug/l  
 RT: 12.07 min Scan# 1790  
 Delta R.T. -0.00 min  
 Lab File: VX006024.D  
 Acq: 15 Nov 2018 17:07

Tgt Ion	Resp	Lower	Upper
119	17408		
119	100		
134	26.2	13.0	39.0
91	23.0	11.4	34.2

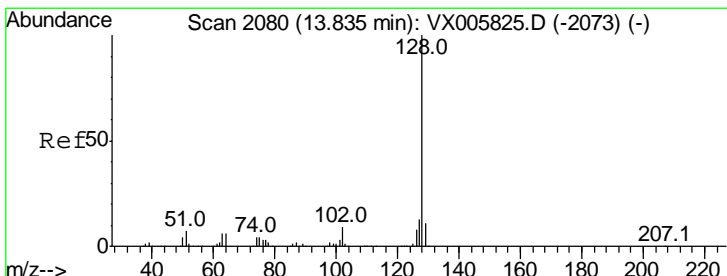
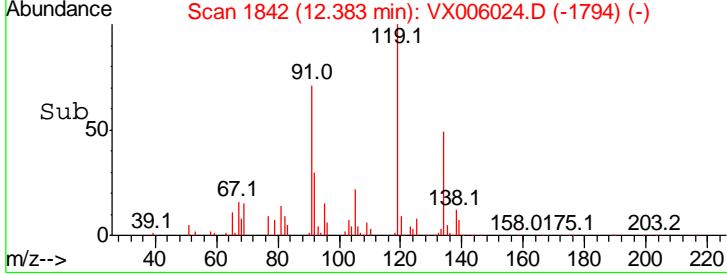
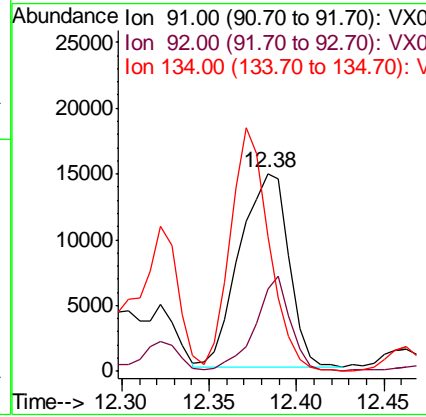
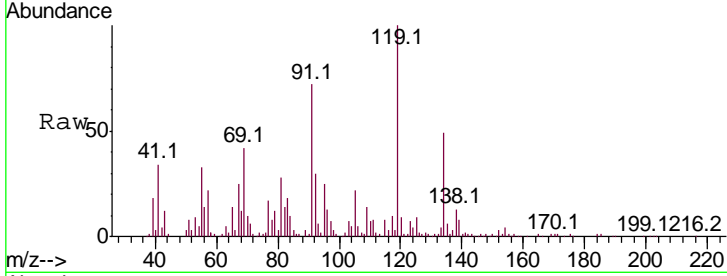




#89  
 n-Butylbenzene  
 Concen: 5.949 ug/l  
 RT: 12.38 min Scan# 1842  
 Delta R.T. -0.01 min  
 Lab File: VX006024.D  
 Acq: 15 Nov 2018 17:07

Instrument : MSVOA\_X  
 ClientSampled : EP2-SB-106(2-4)MEDL

Tgt Ion	Resp	Lower	Upper
91	100		
92	34.4	26.1	78.2
134	99.3	13.1	39.3#



#95  
 Naphthalene  
 Concen: 10.322 ug/l  
 RT: 13.83 min Scan# 2080  
 Delta R.T. 0.00 min  
 Lab File: VX006024.D  
 Acq: 15 Nov 2018 17:07

Tgt Ion	Resp	Lower	Upper
128	100		
127	13.2	10.4	15.6
129	12.7	8.7	13.1

