

Data Path : Z:\VOASRV\HPCHEM1\MSVOA\_X\DATA\VX111518\  
 Data File : VX006026.D  
 Acq On : 15 Nov 2018 18:00  
 Operator : JC/MD  
 Sample : J5860-23ME  
 Misc : 5.18g/5mL/100uL/5.00mL/MSVOA\_X/MEOH  
 ALS Vial : 11 Sample Multiplier: 1

**Instrument :**  
 MSVOA\_X  
**ClientSampleId :**  
 EP2-SB-110(24-28)ME

Quant Time: Nov 16 11:56:48 2018  
 Quant Method : Z:\VOASRV\HPCHEM1\MSVOA\_X\METHOD\82X110718W.M  
 Quant Title : SW846 8260  
 QLast Update : Wed Nov 07 14:40:53 2018  
 Response via : Initial Calibration

Internal Standards	R.T.	QIon	Response	Conc	Units	Dev(Min)
1) Pentafluorobenzene	5.66	168	140739	50.00	ug/l	0.00
34) 1,4-Difluorobenzene	6.86	114	194799	50.00	ug/l	0.00
63) Chlorobenzene-d5	10.12	117	179778	50.00	ug/l	0.00
72) 1,4-Dichlorobenzene-d4	12.08	152	97608	50.00	ug/l	0.00

System Monitoring Compounds	R.T.	QIon	Response	Conc	Units	Dev(Min)
33) 1,2-Dichloroethane-d4	6.06	65	77821	48.10	ug/l	0.00
Spiked Amount				50.000		
			Recovery	=	96.20%	
35) Dibromofluoromethane	5.50	113	61345	46.30	ug/l	0.00
Spiked Amount				50.000		
			Recovery	=	92.60%	
50) Toluene-d8	8.71	98	235612	53.49	ug/l	0.00
Spiked Amount				50.000		
			Recovery	=	106.98%	
62) 4-Bromofluorobenzene	11.14	95	86869	54.85	ug/l	0.00
Spiked Amount				50.000		
			Recovery	=	109.70%	

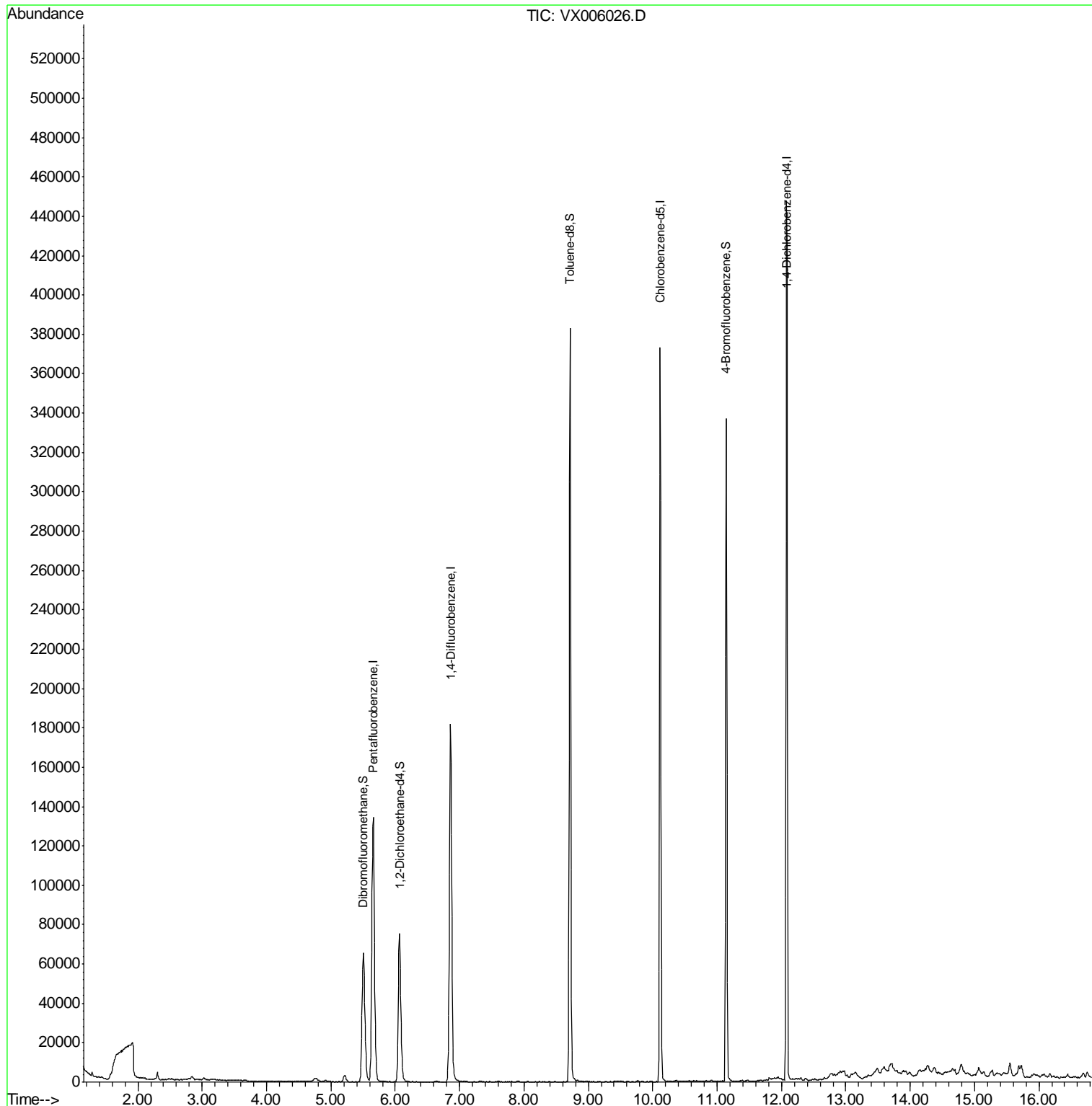
Target Compounds Qvalue  
 -----

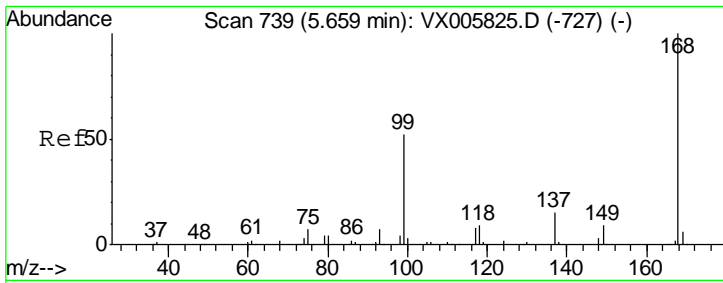
(#) = qualifier out of range (m) = manual integration (+) = signals summed

Data Path : Z:\VOASRV\HPCHEM1\MSVOA\_X\DATA\VX111518\  
Data File : VX006026.D  
Acq On : 15 Nov 2018 18:00  
Operator : JC/MD  
Sample : J5860-23ME  
Misc : 5.18g/5mL/100uL/5.00mL/MSVOA\_X/MEOH  
ALS Vial : 11 Sample Multiplier: 1

Instrument :  
MSVOA\_X  
ClientSampleId :  
EP2-SB-110(24-28)ME

Quant Time: Nov 16 11:56:48 2018  
Quant Method : Z:\VOASRV\HPCHEM1\MSVOA\_X\METHOD\82X110718W.M  
Quant Title : SW846 8260  
QLast Update : Wed Nov 07 14:40:53 2018  
Response via : Initial Calibration

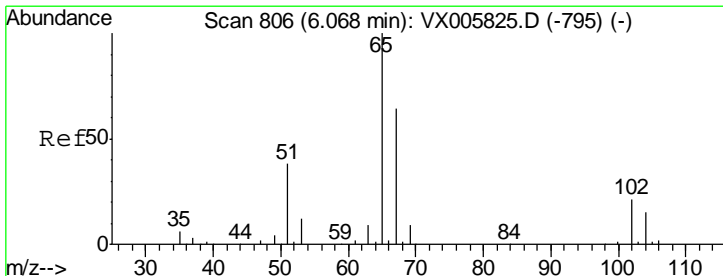
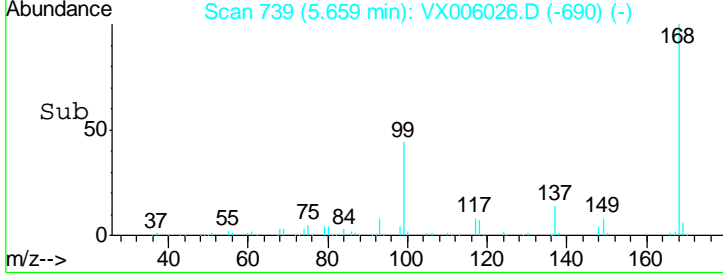
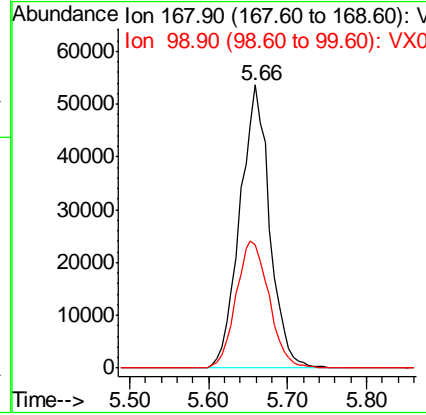
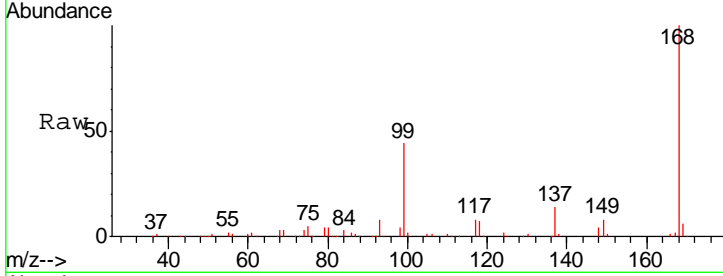




#1  
 Pentafluorobenzene  
 Concen: 50.00 ug/l  
 RT: 5.66 min Scan# 739  
 Delta R.T. -0.00 min  
 Lab File: VX006026.D  
 Acq: 15 Nov 2018 18:00

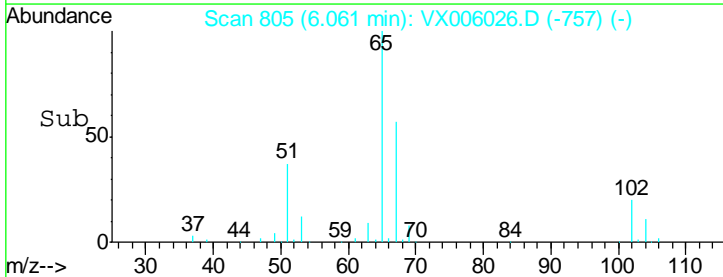
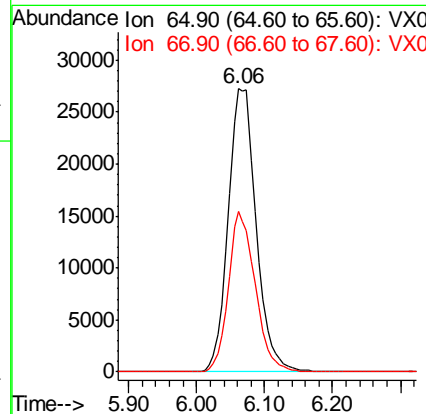
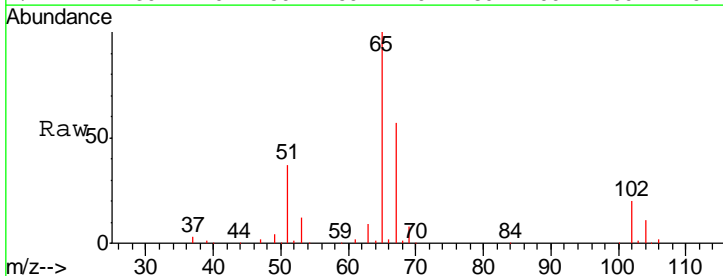
Instrument :  
 MSVOA\_X  
 ClientSampleId :  
 EP2-SB-110(24-28)ME

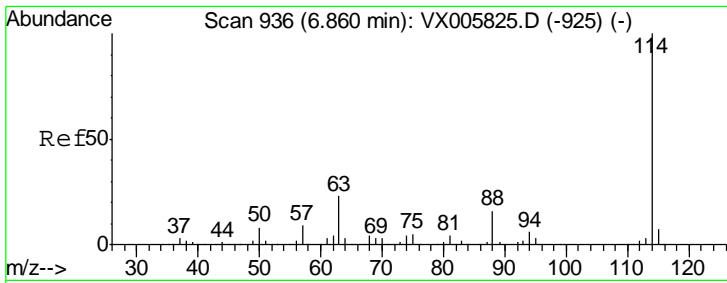
Tgt Ion: 168 Resp: 140739  
 Ion Ratio Lower Upper  
 168 100  
 99 43.6 40.7 61.1



#33  
 1,2-Dichloroethane-d4  
 Concen: 48.10 ug/l  
 RT: 6.06 min Scan# 805  
 Delta R.T. -0.01 min  
 Lab File: VX006026.D  
 Acq: 15 Nov 2018 18:00

Tgt Ion: 65 Resp: 77821  
 Ion Ratio Lower Upper  
 65 100  
 67 54.2 0.0 105.0

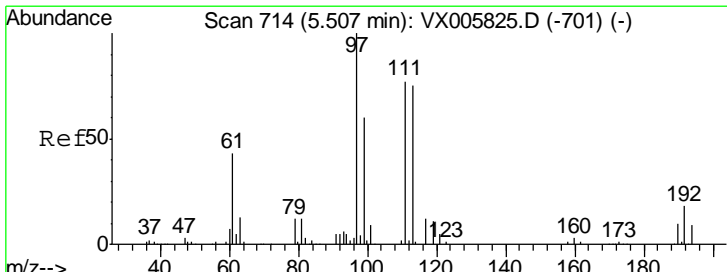
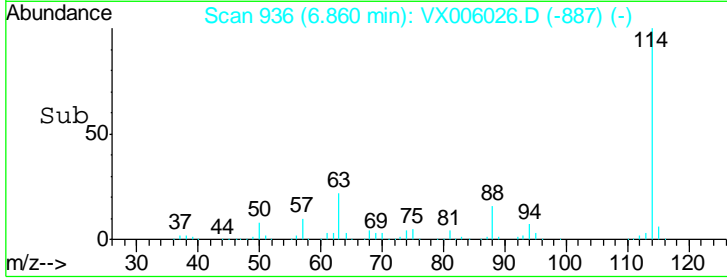
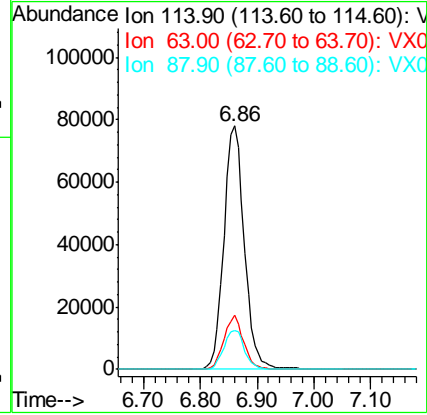
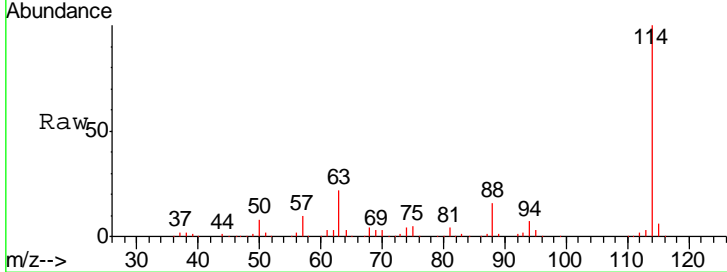




#34  
 1,4-Difluorobenzene  
 Concen: 50.00 ug/l  
 RT: 6.86 min Scan# 936  
 Delta R.T. -0.00 min  
 Lab File: VX006026.D  
 Acq: 15 Nov 2018 18:00

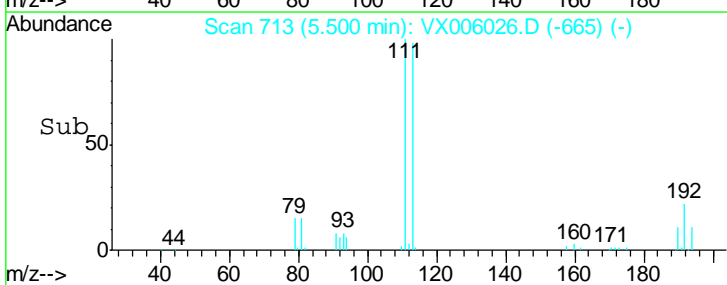
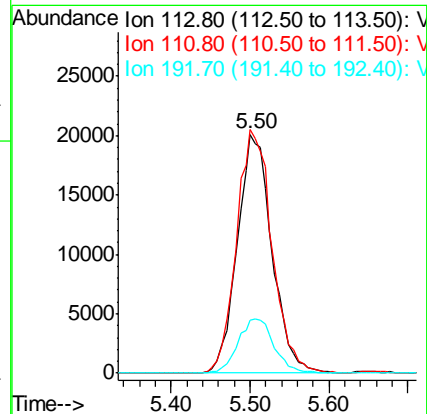
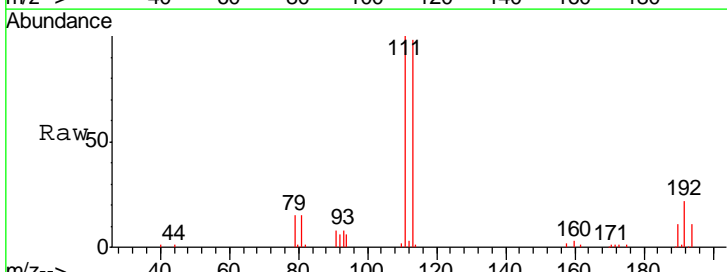
Instrument :  
 MSVOA\_X  
 ClientSampled :  
 EP2-SB-110(24-28)ME

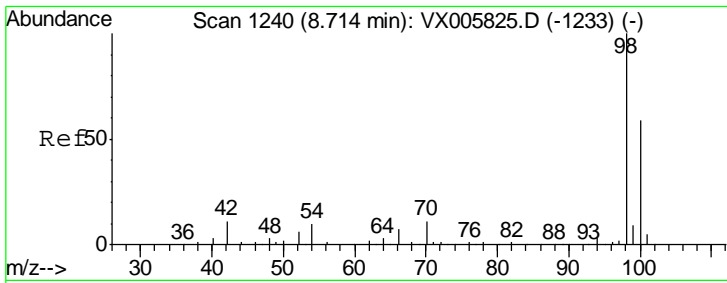
Tgt Ion	Resp	Lower	Upper
114	194799		
63	22.2	0.0	42.8
88	15.7	0.0	31.2



#35  
 Dibromofluoromethane  
 Concen: 46.30 ug/l  
 RT: 5.50 min Scan# 713  
 Delta R.T. -0.01 min  
 Lab File: VX006026.D  
 Acq: 15 Nov 2018 18:00

Tgt Ion	Resp	Lower	Upper
113	61345		
111	104.5	82.3	123.5
192	23.4	17.9	26.9

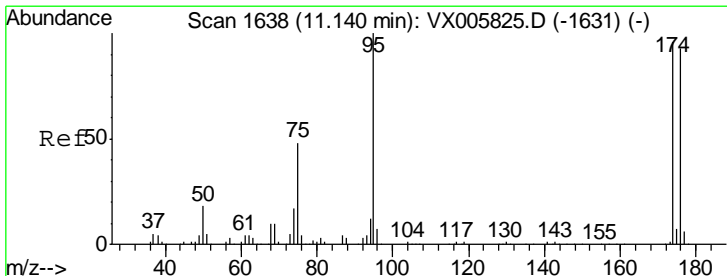
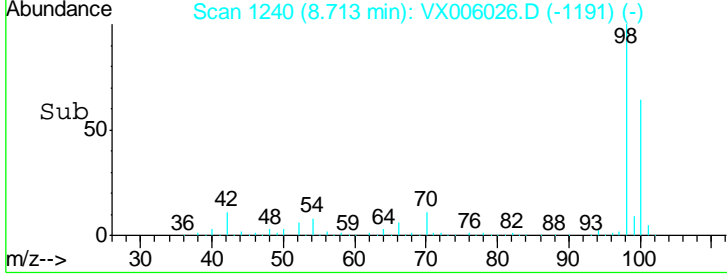
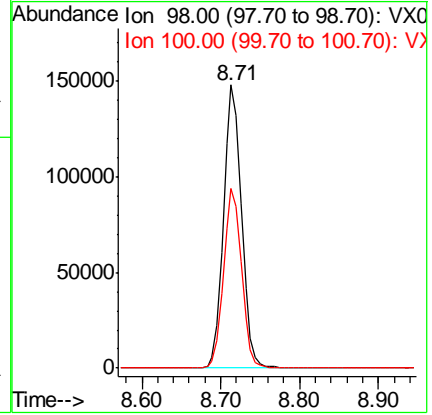
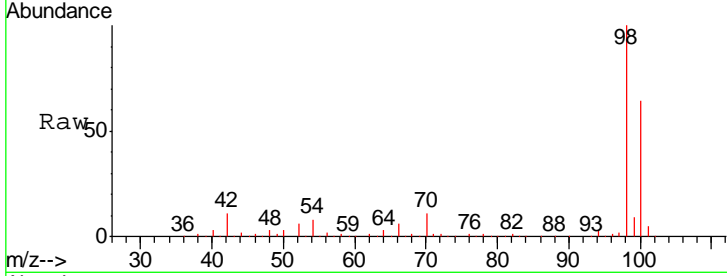




#50  
 Toluene-d8  
 Concen: 53.49 ug/l  
 RT: 8.71 min Scan# 1240  
 Delta R.T. -0.00 min  
 Lab File: VX006026.D  
 Acq: 15 Nov 2018 18:00

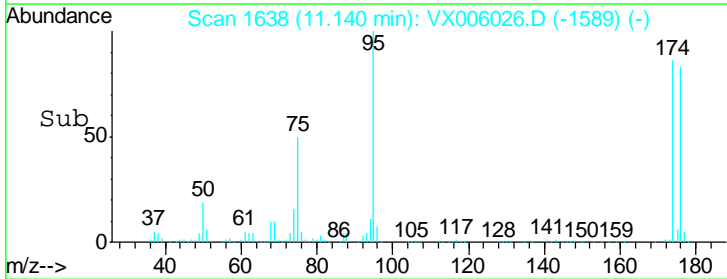
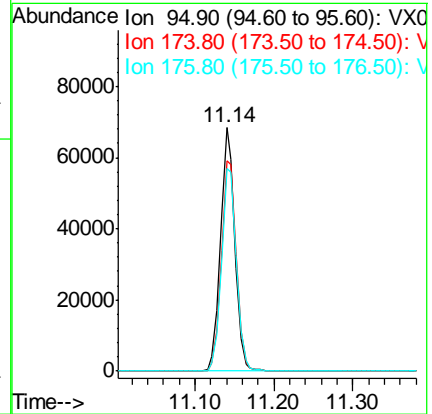
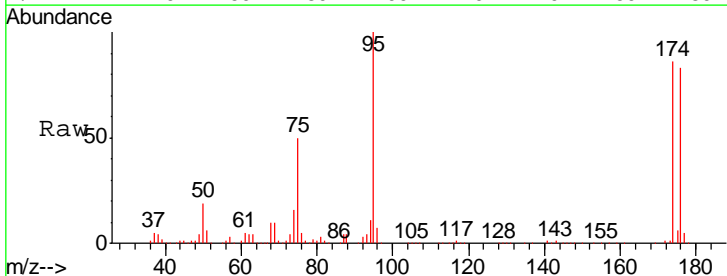
**Instrument :**  
 MSVOA\_X  
**ClientSampled :**  
 EP2-SB-110(24-28)ME

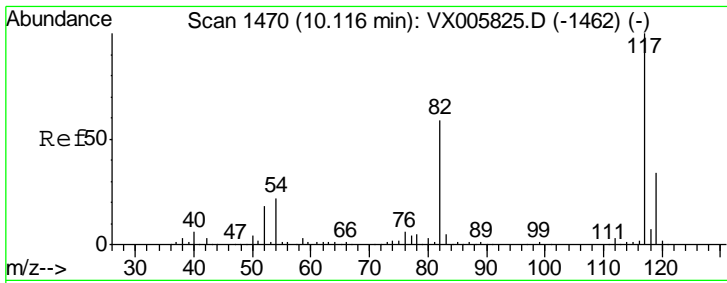
Tgt Ion	Resp	Lower	Upper
98	235612		
100	63.4	51.3	76.9



#62  
 4-Bromofluorobenzene  
 Concen: 54.85 ug/l  
 RT: 11.14 min Scan# 1638  
 Delta R.T. -0.00 min  
 Lab File: VX006026.D  
 Acq: 15 Nov 2018 18:00

Tgt Ion	Resp	Lower	Upper
95	86869		
174	90.6	0.0	184.4
176	86.9	0.0	177.4

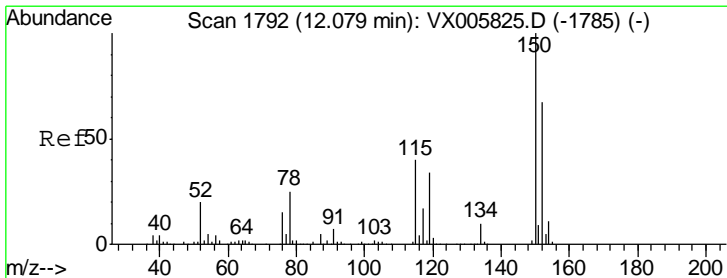
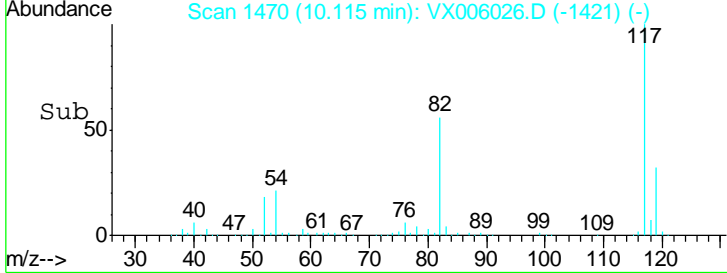
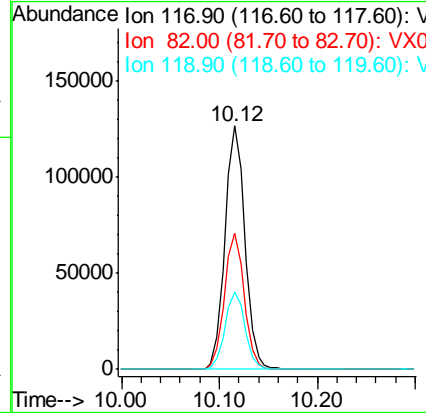
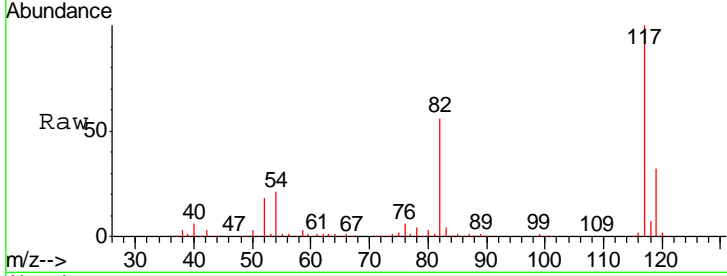




#63  
 Chlorobenzene-d5  
 Concen: 50.00 ug/l  
 RT: 10.12 min Scan# 1470  
 Delta R.T. -0.00 min  
 Lab File: VX006026.D  
 Acq: 15 Nov 2018 18:00

Instrument :  
 MSVOA\_X  
 ClientSampled :  
 EP2-SB-110(24-28)ME

Tgt Ion	Resp	Lower	Upper
117	179778		
82	55.8	44.1	66.1
119	31.7	26.2	39.2



#72  
 1,4-Dichlorobenzene-d4  
 Concen: 50.00 ug/l  
 RT: 12.08 min Scan# 1792  
 Delta R.T. -0.00 min  
 Lab File: VX006026.D  
 Acq: 15 Nov 2018 18:00

Tgt Ion	Resp	Lower	Upper
152	97608		
115	56.3	39.4	118.1
150	157.4	0.0	346.4

