

Data Path : Z:\VOASRV\HPCHEM1\MSVOA_X\DATA\VX111518\
 Data File : VX006018.D
 Acq On : 15 Nov 2018 12:38
 Operator : JC/MD
 Sample : VX1115MBL01
 Misc : 5.0g/10mL/100uL/5.00mL/MSVOA_X/MEOH
 ALS Vial : 3 Sample Multiplier: 1

Instrument :
 MSVOA_X
 ClientSampleId :
 VX1115MBL01

Integration Parameters: RTEINT.P
 Integrator: RTE
 Smoothing : ON Filtering: 5
 Sampling : 1 Min Area: 3 % of largest Peak
 Start Thrs: 0.2 Max Peaks: 100
 Stop Thrs : 0 Peak Location: TOP

If leading or trailing edge < 100 prefer < Baseline drop else tangent >
 Peak separation: 5

Method : Z:\VOASRV\HPCHEM1\MSVOA_X\METHOD\82X110718W.M
 Title : SW846 8260

Signal : TIC

peak #	R.T. min	first scan	max scan	last scan	PK TY	peak height	corr. area	corr. % max.	% of total
1	5.214	657	666	677	rVB2	3087	8225	1.33%	0.242%
2	5.501	698	713	726	rBV2	76334	222799	35.89%	6.563%
3	5.665	728	740	757	rVB2	142992	400596	64.53%	11.801%
4	6.068	794	806	823	rBV2	82347	220515	35.52%	6.496%
5	6.860	926	936	951	rBV	196793	465255	74.95%	13.706%
6	8.714	1233	1240	1252	rBV	392062	620746	100.00%	18.286%
7	10.116	1464	1470	1486	rBV	371893	526688	84.85%	15.515%
8	11.140	1632	1638	1654	rVB	310988	410694	66.16%	12.098%
9	12.079	1786	1792	1805	rBV	424035	519085	83.62%	15.291%

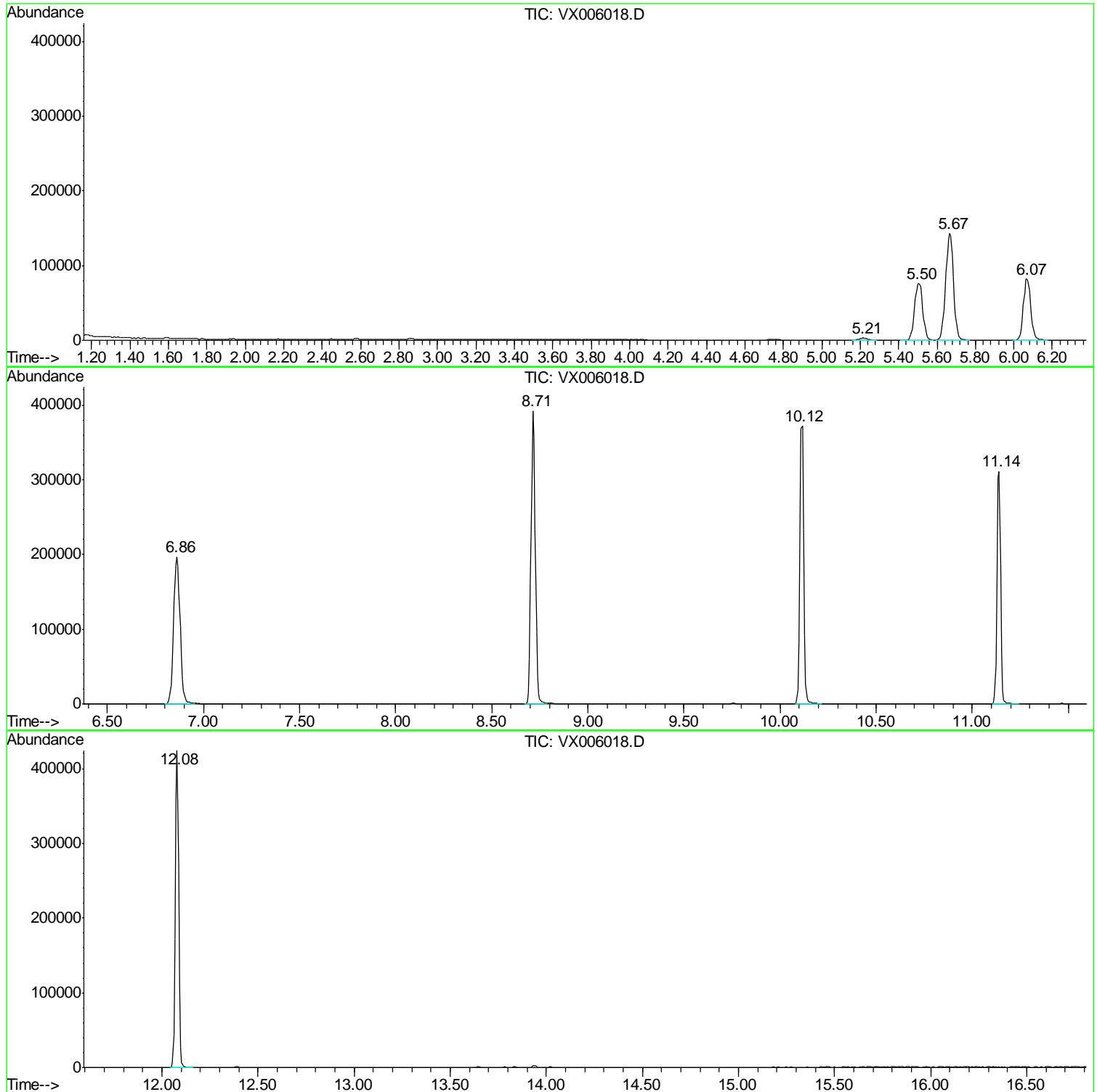
Sum of corrected areas: 3394603

Data Path : Z:\VOASRV\HPCHEM1\MSVOA_X\DATA\VX111518\
Data File : VX006018.D
Acq On : 15 Nov 2018 12:38
Operator : JC/MD
Sample : VX1115MBL01
Misc : 5.0g/10mL/100uL/5.00mL/MSVOA_X/MEOH
ALS Vial : 3 Sample Multiplier: 1

Instrument :
MSVOA_X
ClientSampled :
VX1115MBL01

Quant Method : Z:\VOASRV\HPCHEM1\MSVOA_X\METHOD\82X110718W.M
Quant Title : SW846 8260

TIC Library : C:\DATABASE\NIST11.L
TIC Integration Parameters: LSCINT.P



Data Path : Z:\VOASRV\HPCHEM1\MSVOA_X\DATA\VX111518\
Data File : VX006018.D
Acq On : 15 Nov 2018 12:38
Operator : JC/MD
Sample : VX1115MBL01
Misc : 5.0g/10mL/100uL/5.00mL/MSVOA_X/MEOH
ALS Vial : 3 Sample Multiplier: 1

Instrument :
MSVOA_X
ClientSampleId :
VX1115MBL01

Quant Method : Z:\VOASRV\HPCHEM1\MSVOA_X\METHOD\82X110718W.M
Quant Title : SW846 8260

TIC Library : C:\DATABASE\NIST11.L
TIC Integration Parameters: LSCINT.P

No Library Search Compounds Detected

Data Path : Z:\VOASRV\HPCHEM1\MSVOA_X\DATA\VX111518\
Data File : VX006018.D
Acq On : 15 Nov 2018 12:38
Operator : JC/MD
Sample : VX1115MBL01
Misc : 5.0g/10mL/100uL/5.00mL/MSVOA_X/MEOH
ALS Vial : 3 Sample Multiplier: 1

Instrument :
MSVOA_X
ClientSampleId :
VX1115MBL01

Quant Method : Z:\VOASRV\HPCHEM1\MSVOA_X\METHOD\82X110718W.M
Quant Title : SW846 8260

TIC Library : C:\DATABASE\NIST11.L
TIC Integration Parameters: LSCINT.P

TIC Top Hit name	RT	EstConc	Units	Response	--Internal Standard--			
					#	RT	Resp	Conc
