

Data Path : Z:\voasrv\HPCHEM1\MSVOA_X\Data\VX111522\
 Data File : VX032824.D
 Acq On : 15 Nov 2022 15:49
 Operator : JC/MD
 Sample : N5587-16
 Misc : 5.0mL/MSVOA_X/WATER
 ALS Vial : 16 Sample Multiplier: 1

Instrument :
 MSVOA_X
 ClientSampleId :

Quant Time: Nov 16 03:34:15 2022
 Quant Method : Z:\voasrv\HPCHEM1\MSVOA_X\Method\82X102622W.M
 Quant Title : SW846 8260
 QLast Update : Thu Oct 27 08:28:06 2022
 Response via : Initial Calibration

Compound	R.T.	QIon	Response	Conc	Units	Dev(Min)

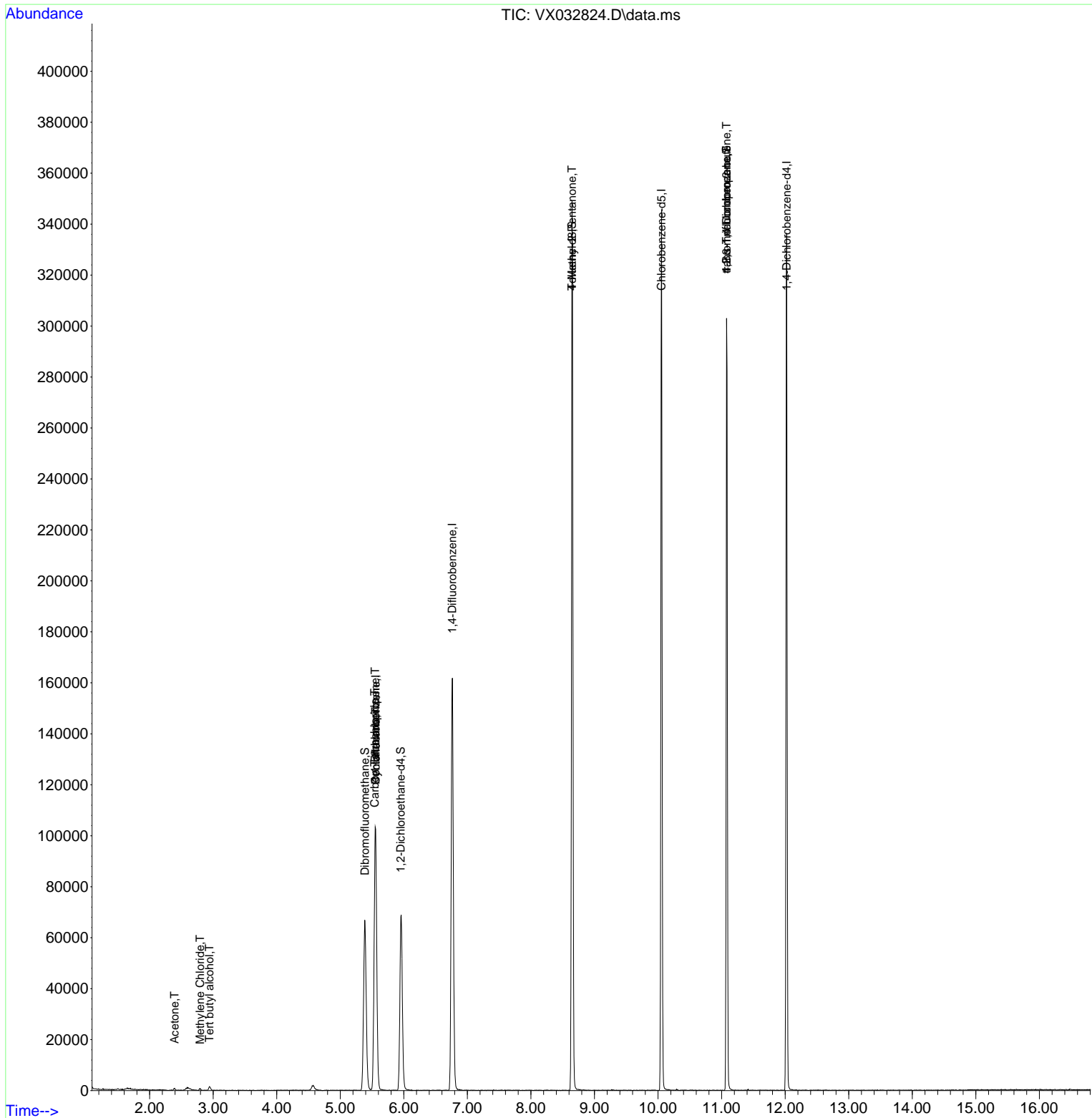
Internal Standards						
1) Pentafluorobenzene	5.556	168	100016	50.000	ug/l	0.00
34) 1,4-Difluorobenzene	6.763	114	165639	50.000	ug/l	0.00
63) Chlorobenzene-d5	10.055	117	149520	50.000	ug/l	0.00
72) 1,4-Dichlorobenzene-d4	12.024	152	69628	50.000	ug/l	0.00
System Monitoring Compounds						
33) 1,2-Dichloroethane-d4	5.952	65	69727	50.174	ug/l	0.00
Spiked Amount	50.000	Range 78 - 117	Recovery	=	100.340%	
35) Dibromofluoromethane	5.385	113	56384	47.722	ug/l	0.00
Spiked Amount	50.000	Range 75 - 124	Recovery	=	95.440%	
50) Toluene-d8	8.647	98	204653	49.813	ug/l	0.00
Spiked Amount	50.000	Range 92 - 112	Recovery	=	99.620%	
62) 4-Bromofluorobenzene	11.079	95	77561	48.329	ug/l	0.00
Spiked Amount	50.000	Range 83 - 123	Recovery	=	96.660%	
Target Compounds						
					Qvalue	
11) Tert butyl alcohol	2.940	59	942	4.657	ug/l #	72
16) Acetone	2.392	43	870	1.722	ug/l #	85
20) Methylene Chloride	2.794	84	326	0.282	ug/l #	63
31) Cyclohexane	5.556	56	2168	1.287	ug/l #	1
36) 1,1-Dichloropropene	5.550	75	7688	4.673	ug/l #	50
38) Carbon Tetrachloride	5.544	117	10270	5.628	ug/l #	16
51) 4-Methyl-2-Pentanone	8.647	43	829	0.501	ug/l #	1
76) 1,2,3-Trichloropropane	11.079	75	42068	27.157	ug/l #	37
81) trans-1,4-Dichloro-2-b...	11.079	75	42068	86.415	ug/l #	6

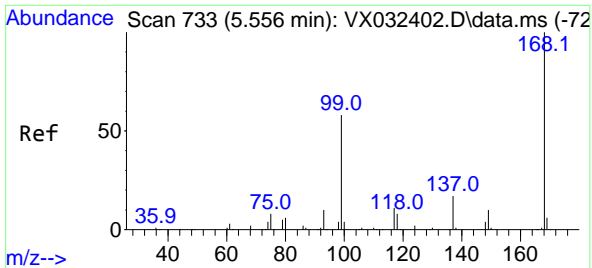
(#) = qualifier out of range (m) = manual integration (+) = signals summed

Data Path : Z:\voasrv\HPCHEM1\MSVOA_X\Data\VX111522\
 Data File : VX032824.D
 Acq On : 15 Nov 2022 15:49
 Operator : JC/MD
 Sample : N5587-16
 Misc : 5.0mL/MSVOA_X/WATER
 ALS Vial : 16 Sample Multiplier: 1

Instrument :
 MSVOA_X
 ClientSampleId :

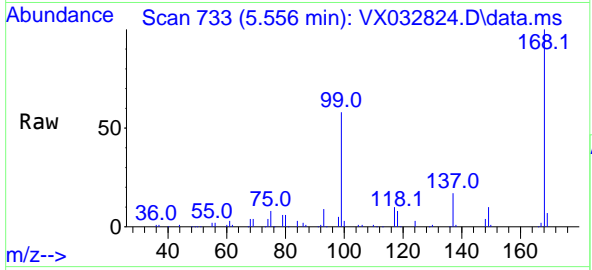
Quant Time: Nov 16 03:34:15 2022
 Quant Method : Z:\voasrv\HPCHEM1\MSVOA_X\Method\82X102622W.M
 Quant Title : SW846 8260
 QLast Update : Thu Oct 27 08:28:06 2022
 Response via : Initial Calibration



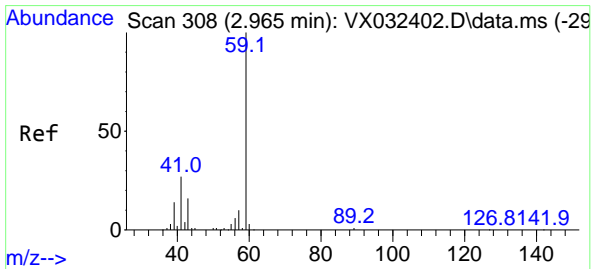
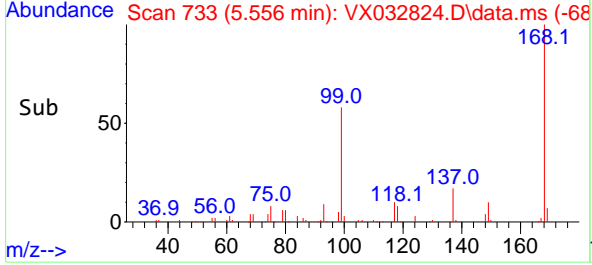
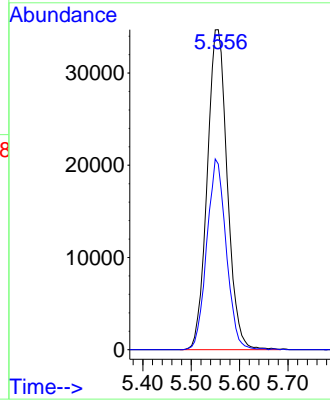


#1
 Pentafluorobenzene
 Concen: 50.000 ug/l
 RT: 5.556 min Scan# 71
 Delta R.T. -0.000 min
 Lab File: VX032824.D
 Acq: 15 Nov 2022 15:49

Instrument :
 MSVOA_X
 ClientSampleId :

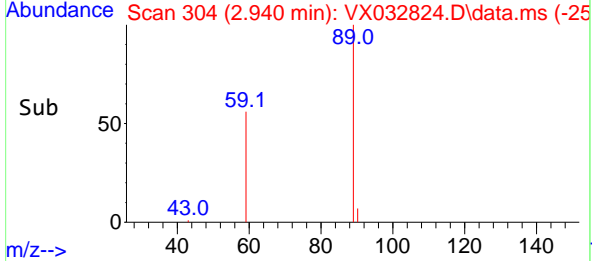
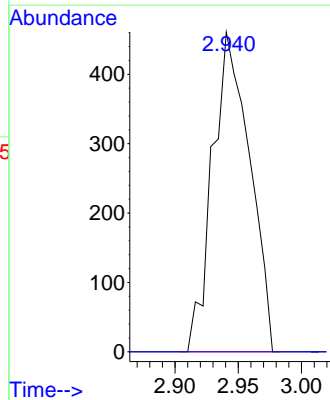
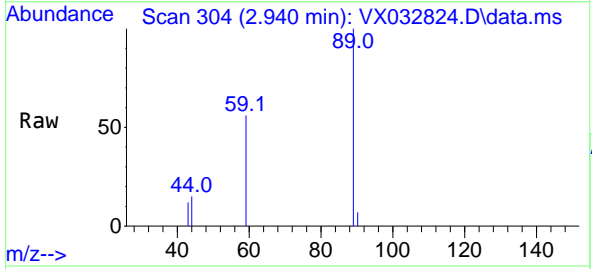


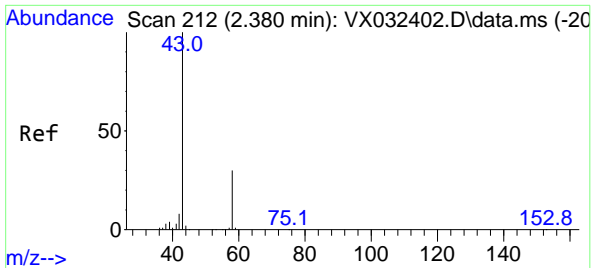
Tgt Ion:168 Resp: 100016
 Ion Ratio Lower Upper
 168 100
 99 58.0 46.1 69.1



#11
 Tert butyl alcohol
 Concen: 4.657 ug/l
 RT: 2.940 min Scan# 304
 Delta R.T. -0.024 min
 Lab File: VX032824.D
 Acq: 15 Nov 2022 15:49

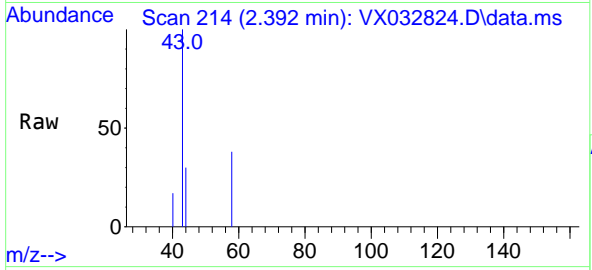
Tgt Ion: 59 Resp: 942
 Ion Ratio Lower Upper
 59 100
 57 0.0 8.2 12.4#



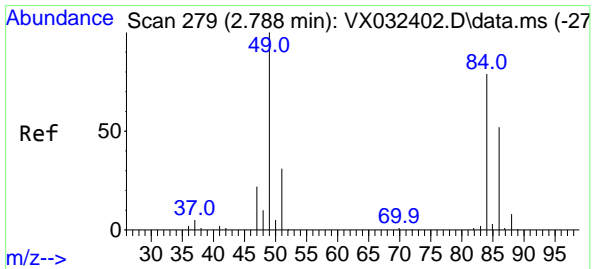
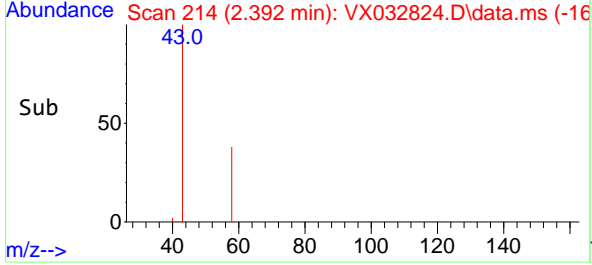
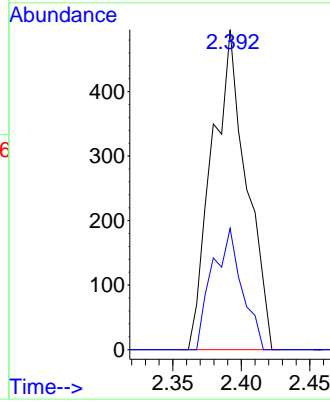


#16
 Acetone
 Concen: 1.722 ug/l
 RT: 2.392 min Scan# 212
 Delta R.T. 0.012 min
 Lab File: VX032824.D
 Acq: 15 Nov 2022 15:49

Instrument :
 MSVOA_X
 ClientSampleId :

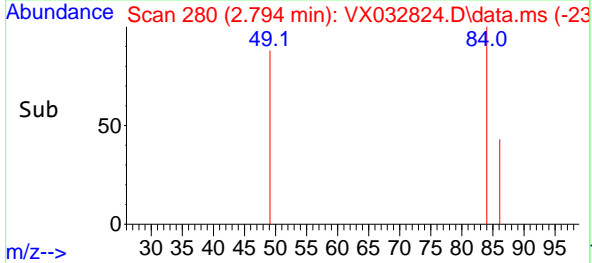
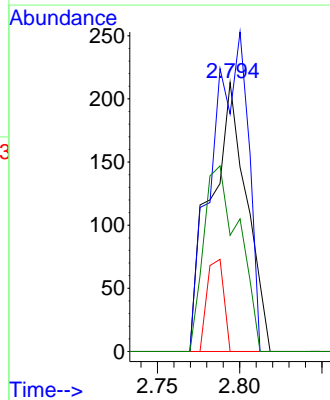
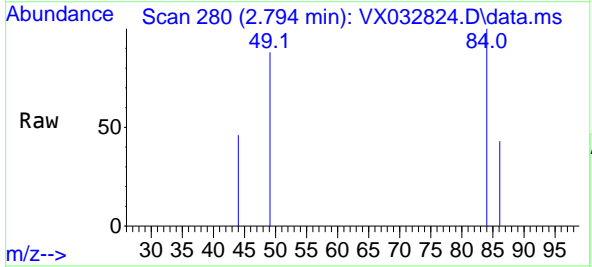


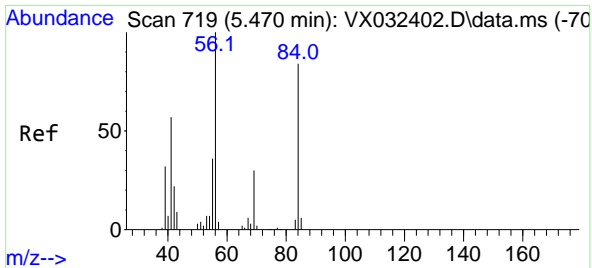
Tgt Ion: 43 Resp: 870
 Ion Ratio Lower Upper
 43 100
 58 37.9 23.8 35.8#



#20
 Methylene Chloride
 Concen: 0.282 ug/l
 RT: 2.794 min Scan# 280
 Delta R.T. 0.006 min
 Lab File: VX032824.D
 Acq: 15 Nov 2022 15:49

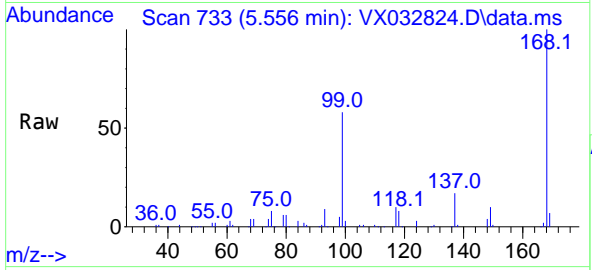
Tgt Ion: 84 Resp: 326
 Ion Ratio Lower Upper
 84 100
 49 88.3 101.0 151.6#
 51 0.0 31.1 46.7#
 86 43.2 52.3 78.5#





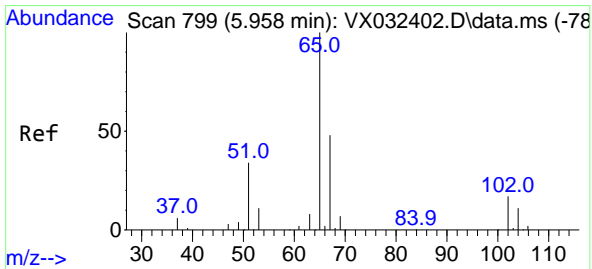
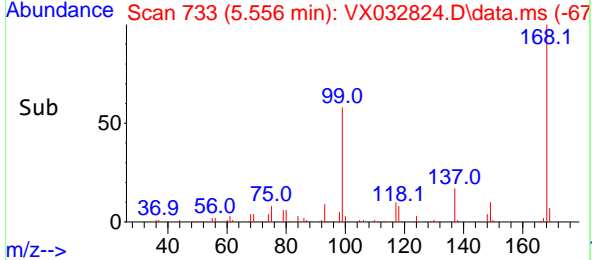
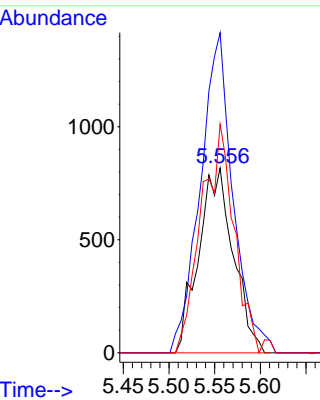
#31
 Cyclohexane
 Concen: 1.287 ug/l
 RT: 5.556 min Scan# 719
 Delta R.T. 0.085 min
 Lab File: VX032824.D
 Acq: 15 Nov 2022 15:49

Instrument : MSVOA_X
 ClientSampleId :



Tgt Ion: 56 Resp: 2168

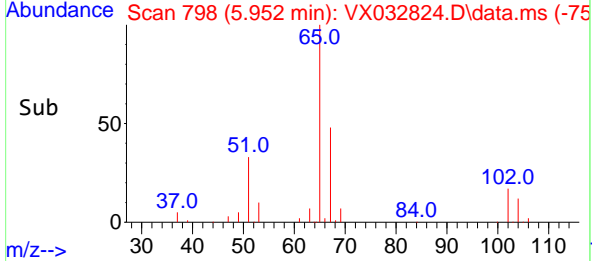
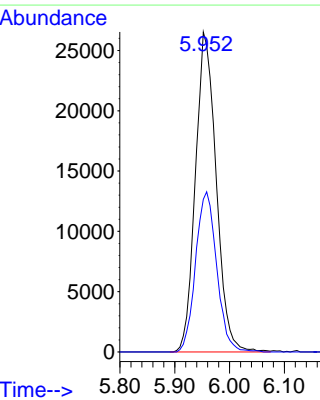
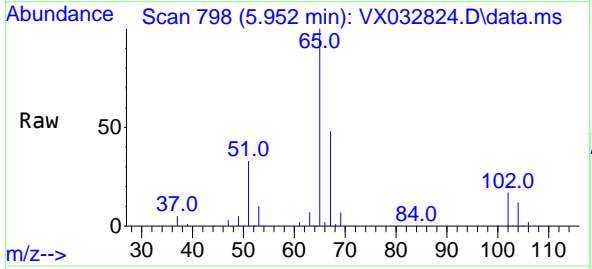
Ion	Ratio	Lower	Upper
56	100		
69	173.3	24.1	36.1#
84	123.7	66.9	100.3#

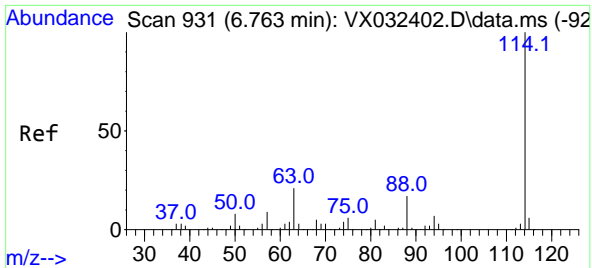


#33
 1,2-Dichloroethane-d4
 Concen: 50.174 ug/l
 RT: 5.952 min Scan# 798
 Delta R.T. -0.006 min
 Lab File: VX032824.D
 Acq: 15 Nov 2022 15:49

Tgt Ion: 65 Resp: 69727

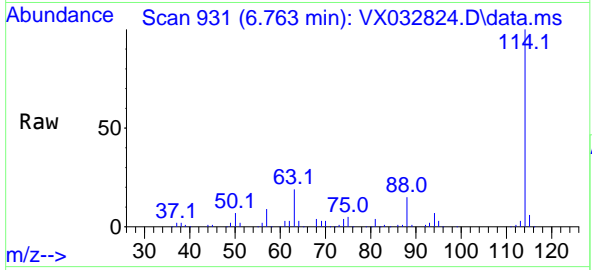
Ion	Ratio	Lower	Upper
65	100		
67	50.9	0.0	101.8





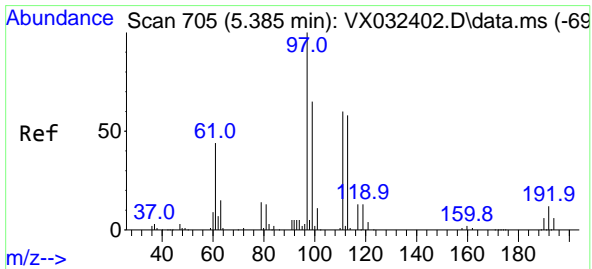
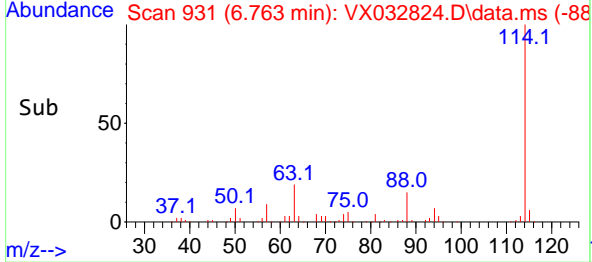
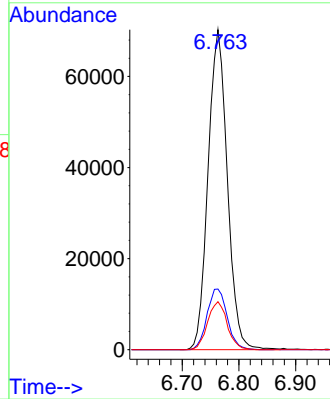
#34
 1,4-Difluorobenzene
 Concen: 50.000 ug/l
 RT: 6.763 min Scan# 911
 Delta R.T. -0.000 min
 Lab File: VX032824.D
 Acq: 15 Nov 2022 15:49

Instrument : MSVOA_X
 ClientSampleId :

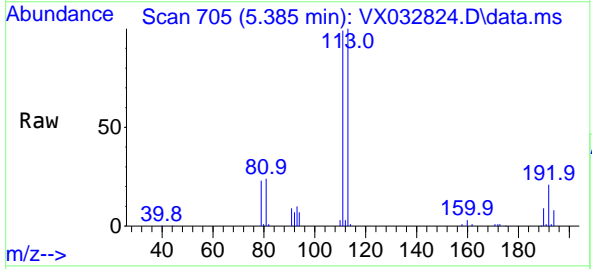


Tgt Ion:114 Resp: 165639

Ion	Ratio	Lower	Upper
114	100		
63	19.0	0.0	41.6
88	15.0	0.0	33.4

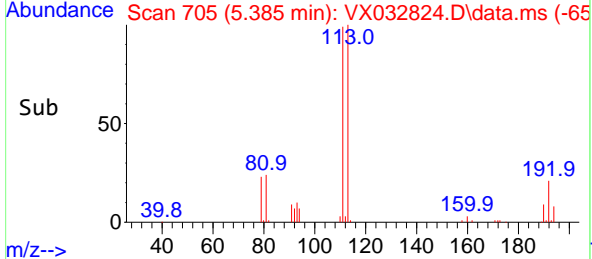
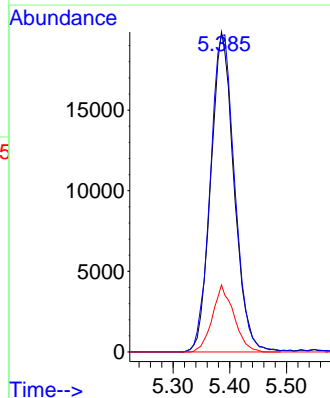


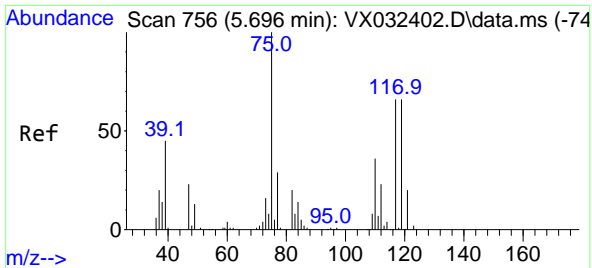
#35
 Dibromofluoromethane
 Concen: 47.722 ug/l
 RT: 5.385 min Scan# 705
 Delta R.T. -0.000 min
 Lab File: VX032824.D
 Acq: 15 Nov 2022 15:49



Tgt Ion:113 Resp: 56384

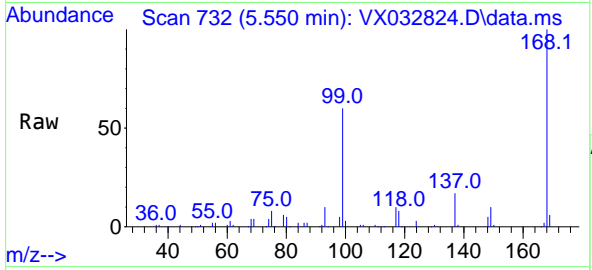
Ion	Ratio	Lower	Upper
113	100		
111	104.3	82.4	123.6
192	19.3	15.4	23.2



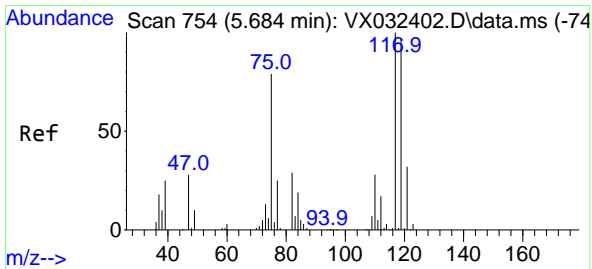
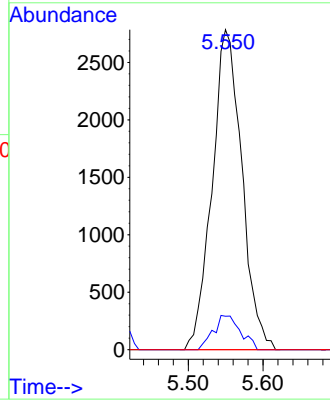
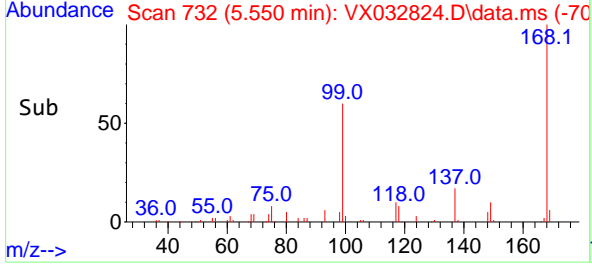


#36
 1,1-Dichloropropene
 Concen: 4.673 ug/l
 RT: 5.550 min Scan# 711
 Delta R.T. -0.146 min
 Lab File: VX032824.D
 Acq: 15 Nov 2022 15:49

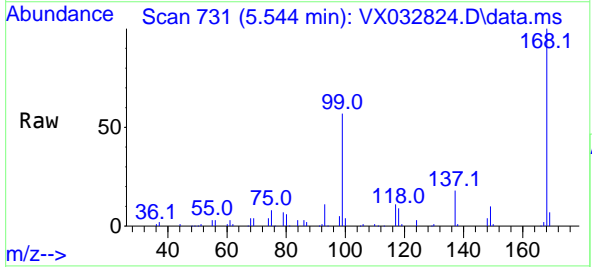
Instrument : MSVOA_X
 ClientSampleId :



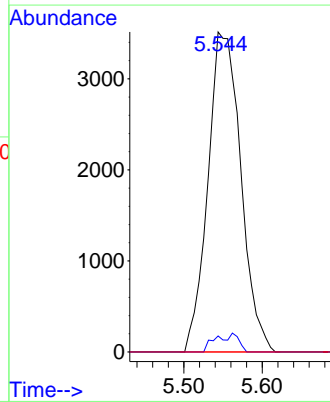
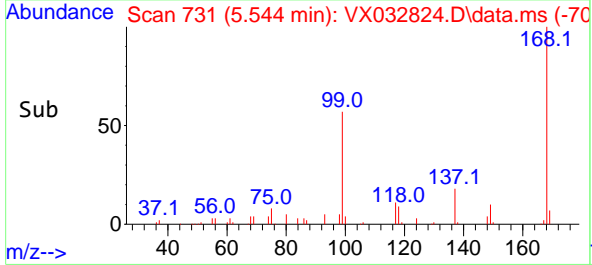
Tgt Ion: 75 Resp: 7688
 Ion Ratio Lower Upper
 75 100
 110 9.7 18.4 55.2#
 77 0.0 24.5 36.7#

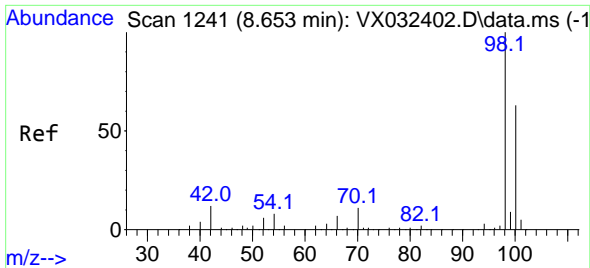


#38
 Carbon Tetrachloride
 Concen: 5.628 ug/l
 RT: 5.544 min Scan# 731
 Delta R.T. -0.140 min
 Lab File: VX032824.D
 Acq: 15 Nov 2022 15:49



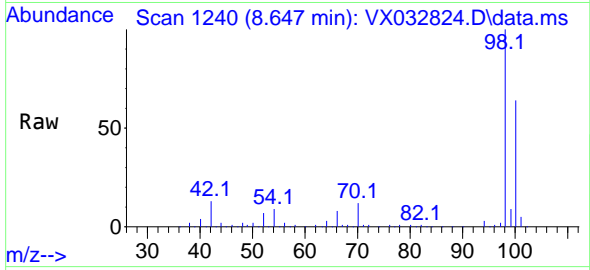
Tgt Ion: 117 Resp: 10270
 Ion Ratio Lower Upper
 117 100
 119 5.0 77.2 115.8#
 121 0.0 25.8 38.6#



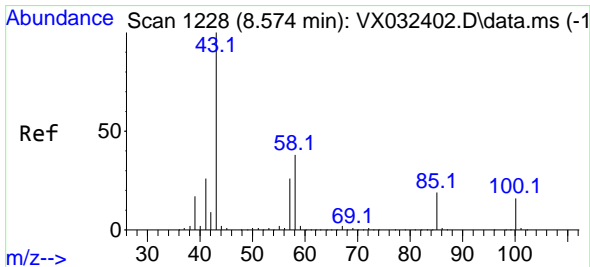
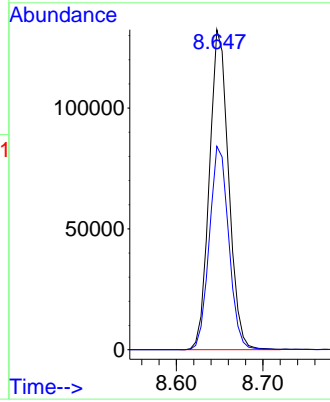
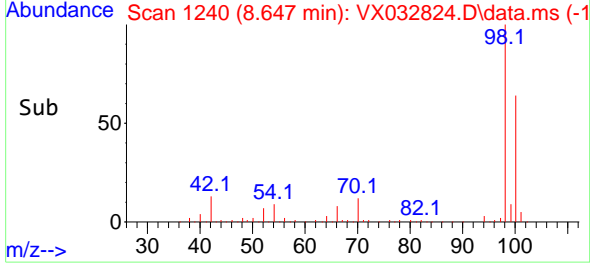


#50
 Toluene-d8
 Concen: 49.813 ug/l
 RT: 8.647 min Scan# 1240
 Delta R.T. -0.006 min
 Lab File: VX032824.D
 Acq: 15 Nov 2022 15:49

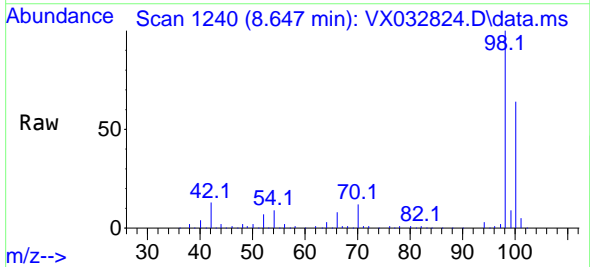
Instrument : MSVOA_X
 ClientSampleId :



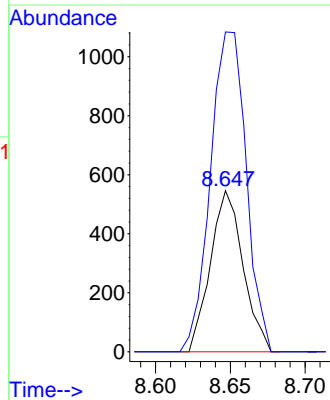
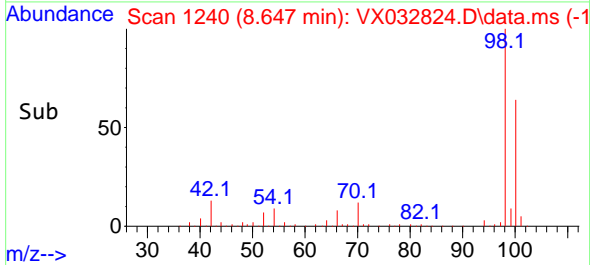
Tgt Ion: 98 Resp: 204653
 Ion Ratio Lower Upper
 98 100
 100 64.1 50.9 76.3

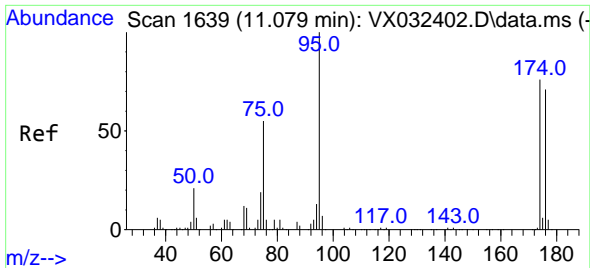


#51
 4-Methyl-2-Pentanone
 Concen: 0.501 ug/l
 RT: 8.647 min Scan# 1240
 Delta R.T. 0.073 min
 Lab File: VX032824.D
 Acq: 15 Nov 2022 15:49



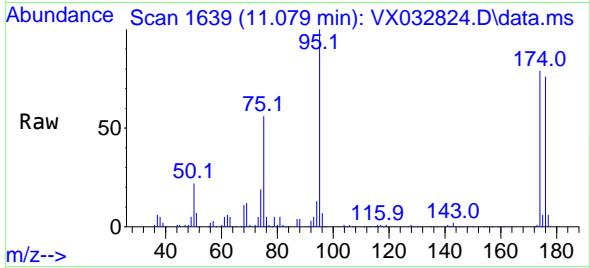
Tgt Ion: 43 Resp: 829
 Ion Ratio Lower Upper
 43 100
 58 217.6 30.9 46.3#



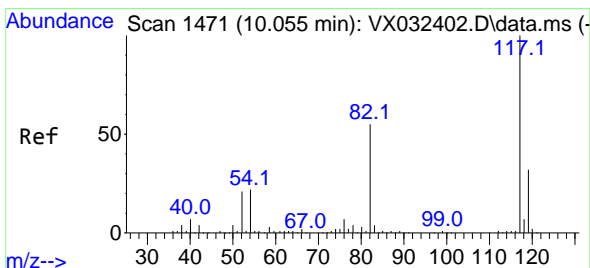
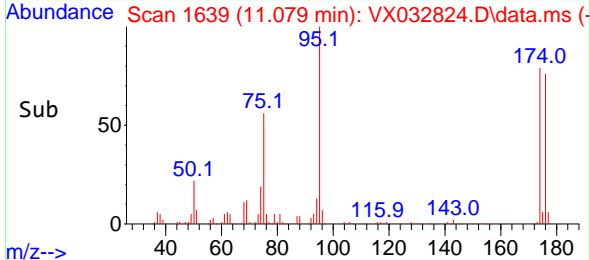
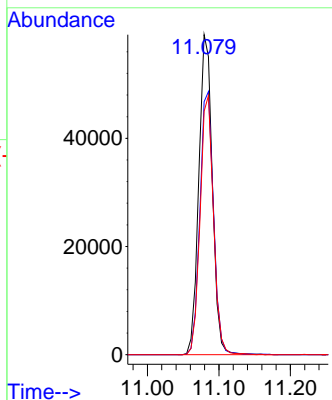


#62
 4-Bromofluorobenzene
 Concen: 48.329 ug/l
 RT: 11.079 min Scan# 1
 Delta R.T. -0.000 min
 Lab File: VX032824.D
 Acq: 15 Nov 2022 15:49

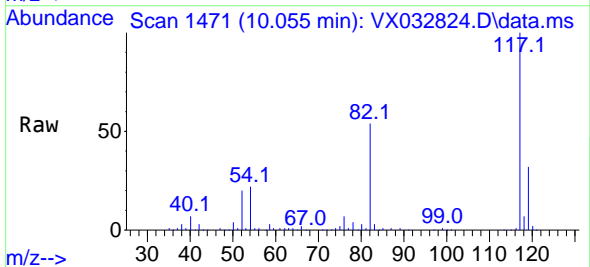
Instrument :
 MSVOA_X
 ClientSampleId :



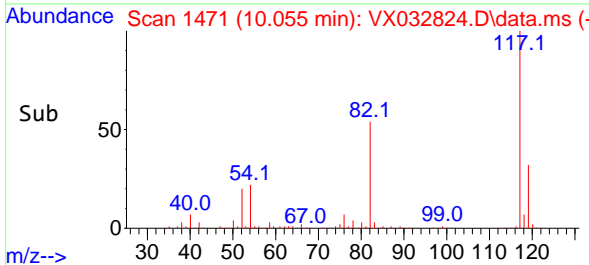
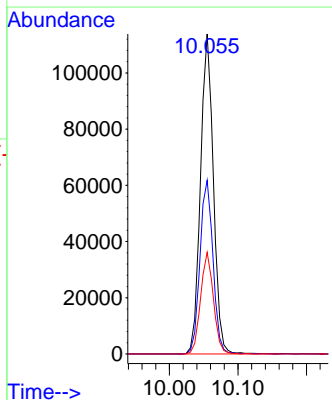
Tgt Ion: 95 Resp: 77561
 Ion Ratio Lower Upper
 95 100
 174 82.9 0.0 164.0
 176 80.1 0.0 154.4

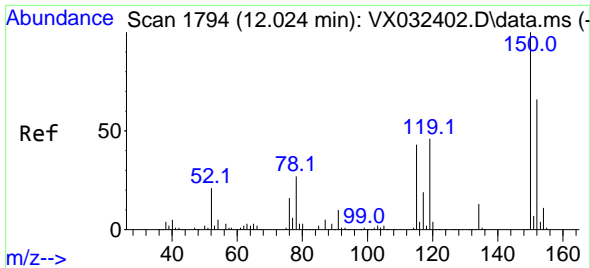


#63
 Chlorobenzene-d5
 Concen: 50.000 ug/l
 RT: 10.055 min Scan# 1471
 Delta R.T. -0.000 min
 Lab File: VX032824.D
 Acq: 15 Nov 2022 15:49



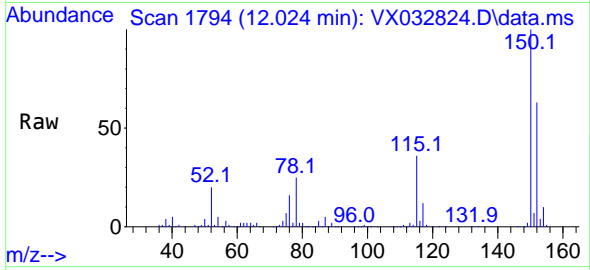
Tgt Ion: 117 Resp: 149520
 Ion Ratio Lower Upper
 117 100
 82 54.3 44.3 66.5
 119 31.7 25.7 38.5



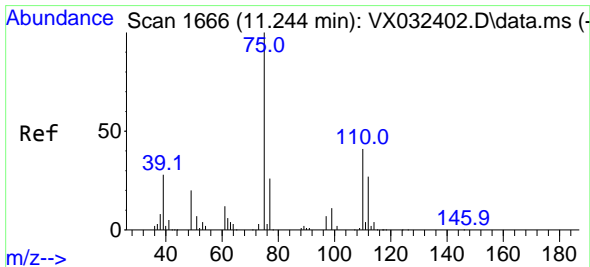
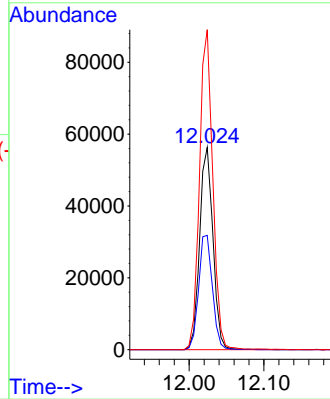
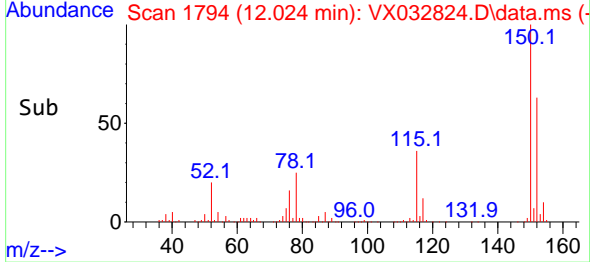


#72
 1,4-Dichlorobenzene-d4
 Concen: 50.000 ug/l
 RT: 12.024 min Scan# 11
 Delta R.T. -0.000 min
 Lab File: VX032824.D
 Acq: 15 Nov 2022 15:49

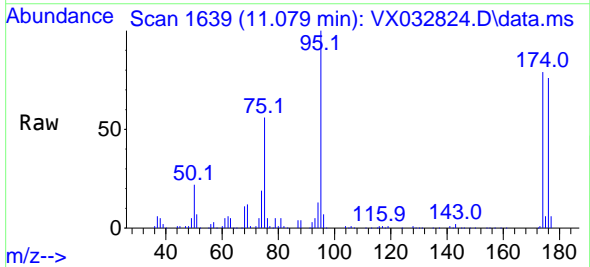
Instrument : MSVOA_X
 ClientSampleId :



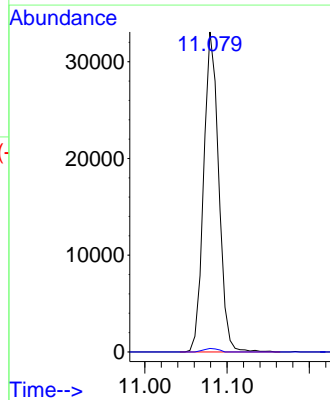
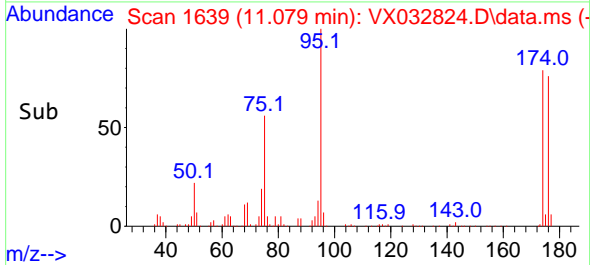
Tgt Ion:152 Resp: 69628
 Ion Ratio Lower Upper
 152 100
 115 58.5 44.0 132.0
 150 157.4 0.0 351.8

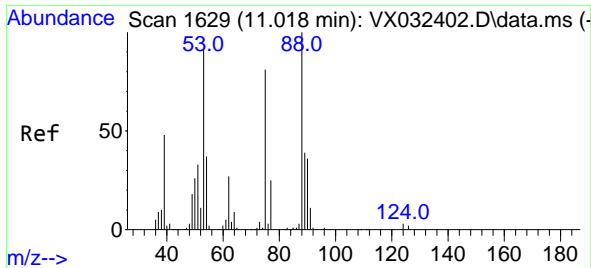


#76
 1,2,3-Trichloropropane
 Concen: 27.157 ug/l
 RT: 11.079 min Scan# 1639
 Delta R.T. -0.165 min
 Lab File: VX032824.D
 Acq: 15 Nov 2022 15:49



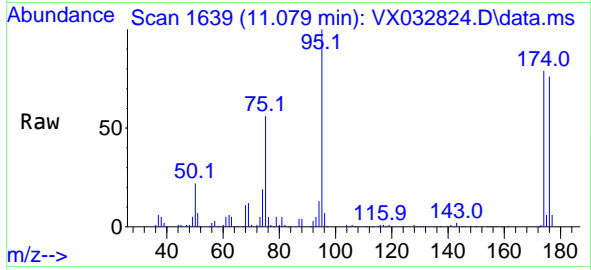
Tgt Ion: 75 Resp: 42068
 Ion Ratio Lower Upper
 75 100
 77 1.1 20.0 60.0#





#81
 trans-1,4-Dichloro-2-butene
 Concen: 86.415 ug/l
 RT: 11.079 min Scan# 10
 Delta R.T. 0.061 min
 Lab File: VX032824.D
 Acq: 15 Nov 2022 15:49

Instrument :
 MSVOA_X
 ClientSampleId :



Tgt Ion: 75 Resp: 42068

Ion	Ratio	Lower	Upper
75	100		
53	0.0	86.9	130.3#
89	0.0	38.3	57.5#

