

Data Path : Z:\voasrv\HPCHEM1\MSVOA_X\Data\VX111522\
 Data File : VX032845.D
 Acq On : 16 Nov 2022 05:02
 Operator : JC/MD
 Sample : N5640-12 40X
 Misc : 5.0mL/MSVOA_X/WATER
 ALS Vial : 40 Sample Multiplier: 1

Instrument :
 MSVOA_X
 ClientSampleId :

Quant Time: Nov 16 07:05:23 2022
 Quant Method : Z:\voasrv\HPCHEM1\MSVOA_X\Method\82X102622W.M
 Quant Title : SW846 8260
 QLast Update : Thu Oct 27 08:28:06 2022
 Response via : Initial Calibration

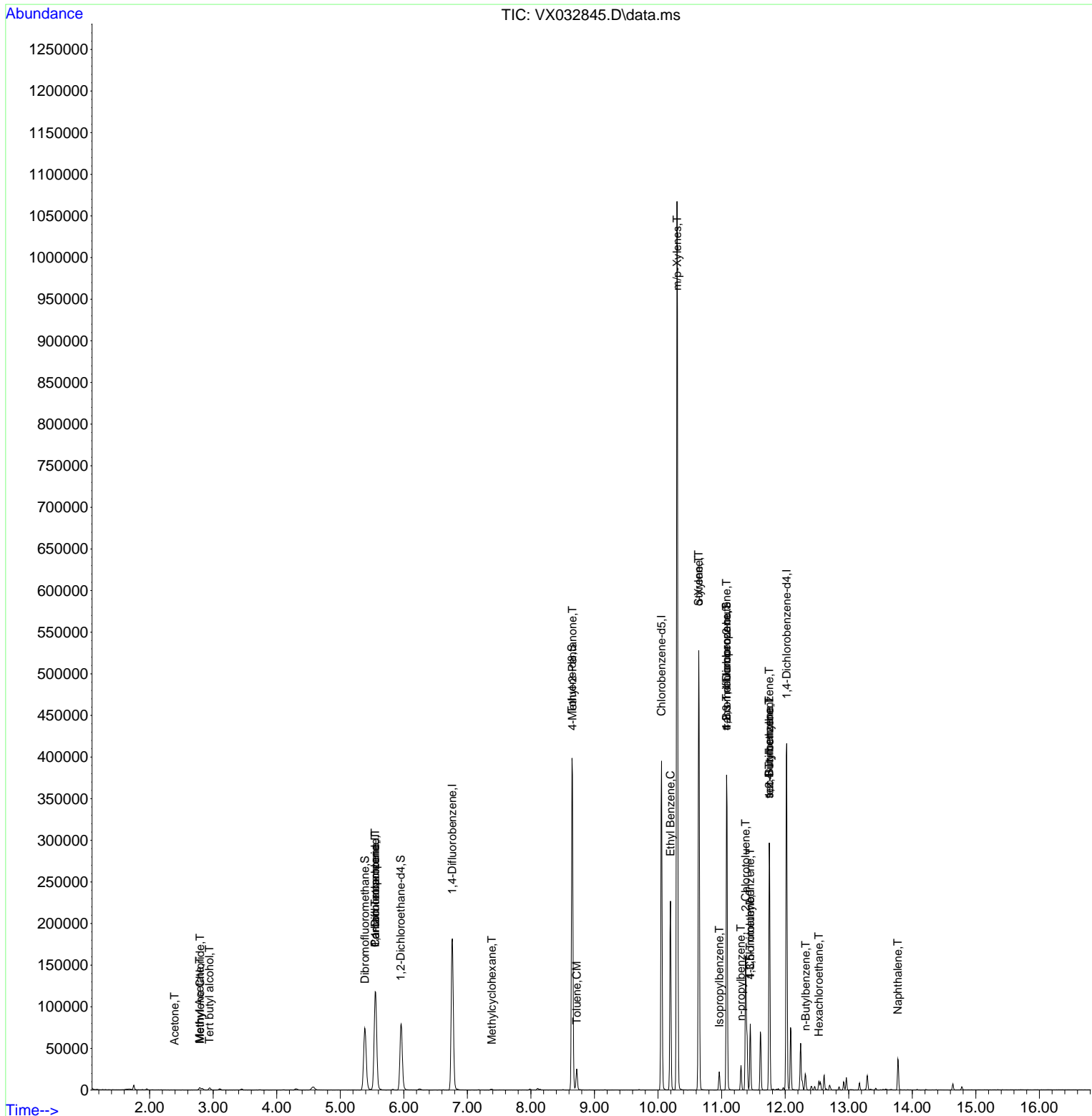
| Compound | R.T. | QIon | Response | Conc | Units | Dev(Min) |
|-------------------------------|--------|----------------|----------|--------|----------|----------|
| ----- | | | | | | |
| Internal Standards | | | | | | |
| 1) Pentafluorobenzene | 5.550 | 168 | 114665 | 50.000 | ug/l | 0.00 |
| 34) 1,4-Difluorobenzene | 6.763 | 114 | 187925 | 50.000 | ug/l | 0.00 |
| 63) Chlorobenzene-d5 | 10.055 | 117 | 172419 | 50.000 | ug/l | 0.00 |
| 72) 1,4-Dichlorobenzene-d4 | 12.024 | 152 | 87030 | 50.000 | ug/l | 0.00 |
| System Monitoring Compounds | | | | | | |
| 33) 1,2-Dichloroethane-d4 | 5.952 | 65 | 80173 | 50.321 | ug/l | 0.00 |
| Spiked Amount | 50.000 | Range 78 - 117 | Recovery | = | 100.640% | |
| 35) Dibromofluoromethane | 5.385 | 113 | 63897 | 47.667 | ug/l | 0.00 |
| Spiked Amount | 50.000 | Range 75 - 124 | Recovery | = | 95.340% | |
| 50) Toluene-d8 | 8.647 | 98 | 233499 | 50.094 | ug/l | 0.00 |
| Spiked Amount | 50.000 | Range 92 - 112 | Recovery | = | 100.180% | |
| 62) 4-Bromofluorobenzene | 11.079 | 95 | 93105 | 51.135 | ug/l | 0.00 |
| Spiked Amount | 50.000 | Range 83 - 123 | Recovery | = | 102.280% | |
| Target Compounds | | | | | | |
| | | | | | | Qvalue |
| 11) Tert butyl alcohol | 2.940 | 59 | 1613 | 6.956 | ug/l # | 72 |
| 16) Acetone | 2.392 | 43 | 238 | 0.411 | ug/l # | 45 |
| 18) Methyl Acetate | 2.788 | 43 | 550 | 0.292 | ug/l # | 51 |
| 20) Methylene Chloride | 2.794 | 84 | 1054 | 0.794 | ug/l | 97 |
| 36) 1,1-Dichloropropene | 5.550 | 75 | 8550 | 4.580 | ug/l # | 50 |
| 38) Carbon Tetrachloride | 5.550 | 117 | 11682 | 5.642 | ug/l # | 15 |
| 39) Methylcyclohexane | 7.385 | 83 | 566 | 0.256 | ug/l | 97 |
| 51) 4-Methyl-2-Pentanone | 8.653 | 43 | 1045 | 0.556 | ug/l # | 1 |
| 52) Toluene | 8.720 | 92 | 9098 | 2.640 | ug/l | 100 |
| 67) Ethyl Benzene | 10.195 | 91 | 126349 | 18.294 | ug/l | 100 |
| 68) m/p-Xylenes | 10.299 | 106 | 237923 | 88.714 | ug/l | 99 |
| 69) o-Xylene | 10.640 | 106 | 111397 | 42.721 | ug/l | 100 |
| 70) Styrene | 10.640 | 104 | 5846 | 1.349 | ug/l # | 1 |
| 73) Isopropylbenzene | 10.963 | 105 | 10998 | 1.595 | ug/l | 99 |
| 76) 1,2,3-Trichloropropane | 11.079 | 75 | 51323 | 26.507 | ug/l # | 37 |
| 78) n-propylbenzene | 11.305 | 91 | 18348 | 2.309 | ug/l | 98 |
| 79) 2-Chlorotoluene | 11.378 | 91 | 13373 | 2.810 | ug/l # | 41 |
| 80) 1,3,5-Trimethylbenzene | 11.451 | 105 | 33518 | 5.687 | ug/l | 99 |
| 81) trans-1,4-Dichloro-2-b... | 11.079 | 75 | 51323 | 84.346 | ug/l # | 6 |
| 82) 4-Chlorotoluene | 11.451 | 91 | 3700 | 0.665 | ug/l # | 45 |
| 83) tert-Butylbenzene | 11.750 | 119 | 15335 | 2.606 | ug/l # | 55 |
| 84) 1,2,4-Trimethylbenzene | 11.750 | 105 | 128794 | 21.970 | ug/l | 100 |
| 85) sec-Butylbenzene | 11.750 | 105 | 128794 | 18.190 | ug/l # | 57 |
| 89) n-Butylbenzene | 12.323 | 91 | 2724 | 0.521 | ug/l # | 18 |
| 90) Hexachloroethane | 12.530 | 117 | 568 | 0.579 | ug/l # | 12 |
| 95) Naphthalene | 13.774 | 128 | 24103 | 3.528 | ug/l | 98 |

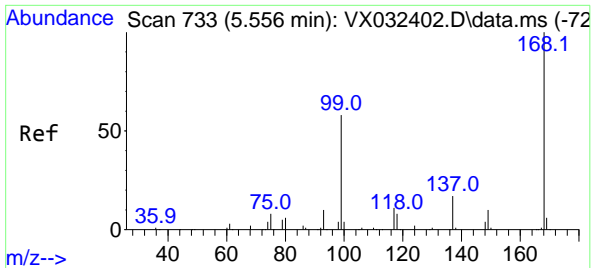
(#) = qualifier out of range (m) = manual integration (+) = signals summed

Data Path : Z:\voasrv\HPCHEM1\MSVOA_X\Data\VX111522\
 Data File : VX032845.D
 Acq On : 16 Nov 2022 05:02
 Operator : JC/MD
 Sample : N5640-12 40X
 Misc : 5.0mL/MSVOA_X/WATER
 ALS Vial : 40 Sample Multiplier: 1

Instrument :
 MSVOA_X
 ClientSampleId :

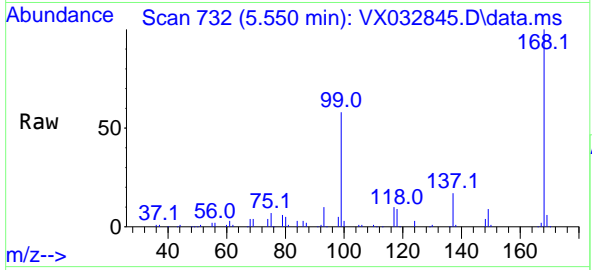
Quant Time: Nov 16 07:05:23 2022
 Quant Method : Z:\voasrv\HPCHEM1\MSVOA_X\Method\82X102622W.M
 Quant Title : SW846 8260
 QLast Update : Thu Oct 27 08:28:06 2022
 Response via : Initial Calibration



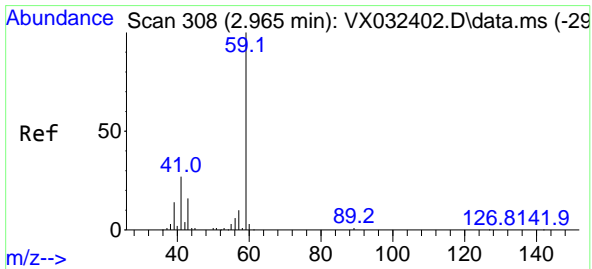
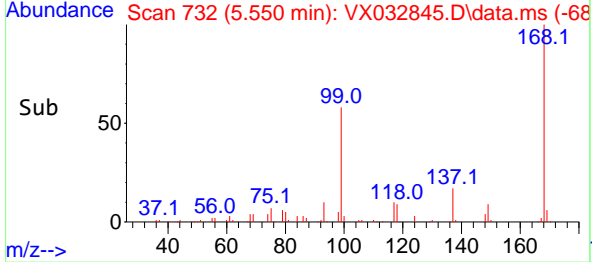
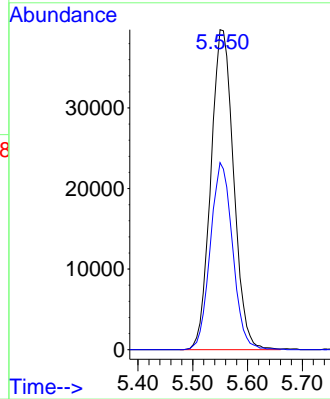


#1
 Pentafluorobenzene
 Concen: 50.000 ug/l
 RT: 5.550 min Scan# 71
 Delta R.T. -0.006 min
 Lab File: VX032845.D
 Acq: 16 Nov 2022 05:02

Instrument :
 MSVOA_X
 ClientSampleId :

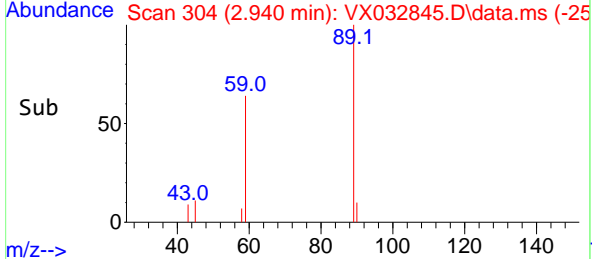
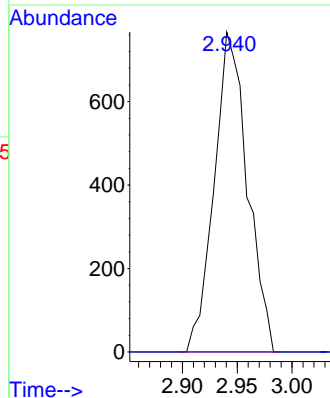
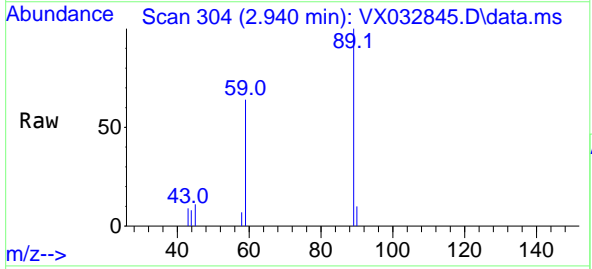


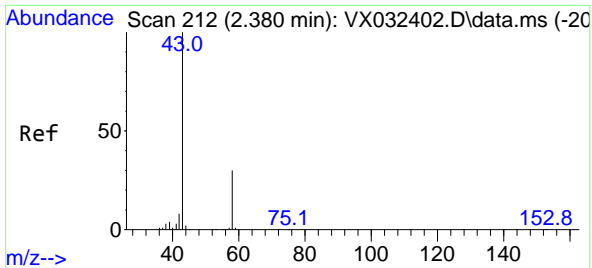
Tgt Ion:168 Resp: 114665
 Ion Ratio Lower Upper
 168 100
 99 58.5 46.1 69.1



#11
 Tert butyl alcohol
 Concen: 6.956 ug/l
 RT: 2.940 min Scan# 304
 Delta R.T. -0.025 min
 Lab File: VX032845.D
 Acq: 16 Nov 2022 05:02

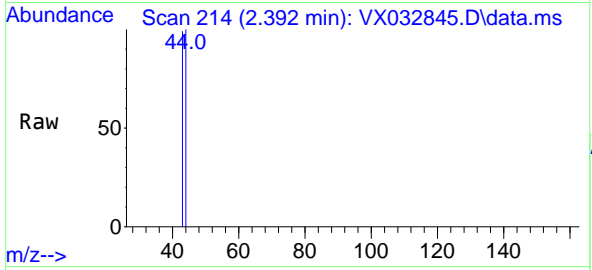
Tgt Ion: 59 Resp: 1613
 Ion Ratio Lower Upper
 59 100
 57 0.0 8.2 12.4#



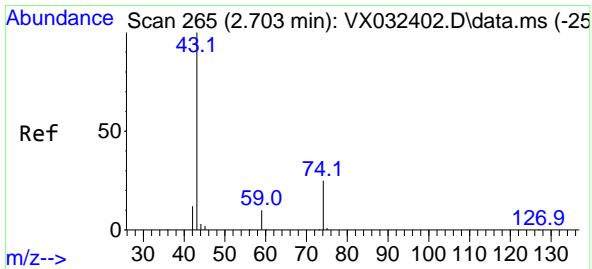
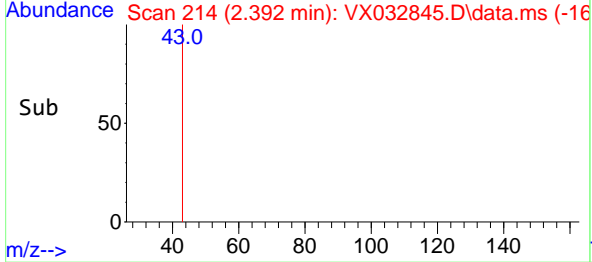
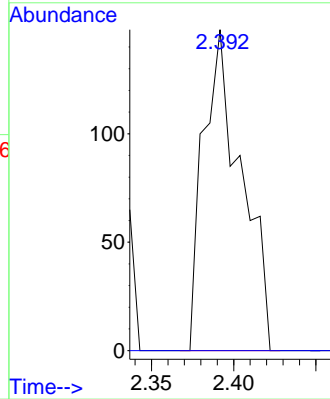


#16
 Acetone
 Concen: 0.411 ug/l
 RT: 2.392 min Scan# 211
 Delta R.T. 0.012 min
 Lab File: VX032845.D
 Acq: 16 Nov 2022 05:02

Instrument : MSVOA_X
 ClientSampleId :

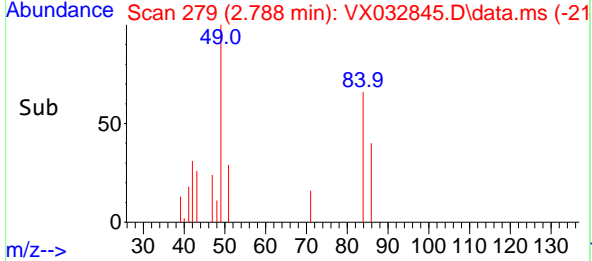
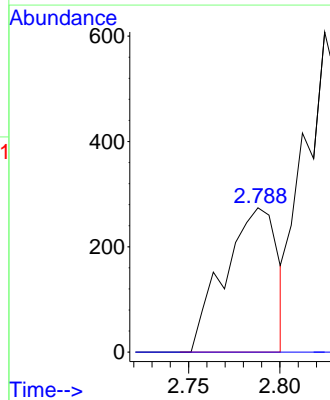
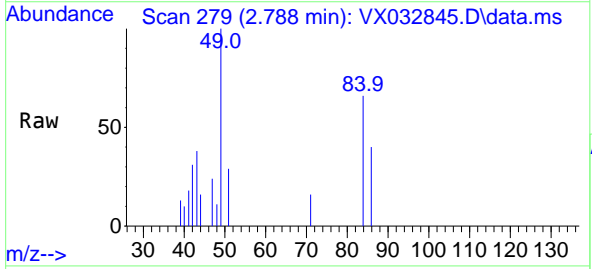


Tgt Ion: 43 Resp: 238
 Ion Ratio Lower Upper
 43 100
 58 0.0 23.8 35.8#

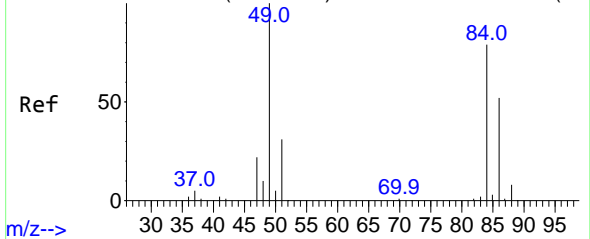


#18
 Methyl Acetate
 Concen: 0.292 ug/l
 RT: 2.788 min Scan# 279
 Delta R.T. 0.085 min
 Lab File: VX032845.D
 Acq: 16 Nov 2022 05:02

Tgt Ion: 43 Resp: 550
 Ion Ratio Lower Upper
 43 100
 74 0.0 19.4 29.0#



Abundance Scan 279 (2.788 min): VX032402.D\data.ms (-27



#20

Methylene Chloride

Concen: 0.794 ug/l

RT: 2.794 min Scan# 21

Delta R.T. 0.006 min

Lab File: VX032845.D

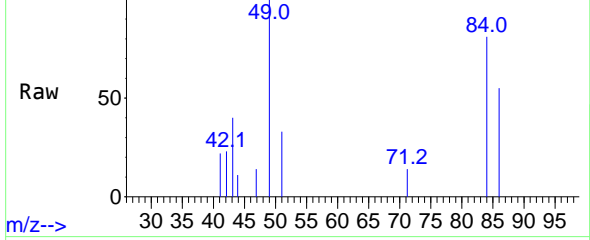
Acq: 16 Nov 2022 05:02

Instrument :

MSVOA_X

ClientSampleId :

Abundance Scan 280 (2.794 min): VX032845.D\data.ms



Tgt Ion: 84 Resp: 1054

Ion Ratio Lower Upper

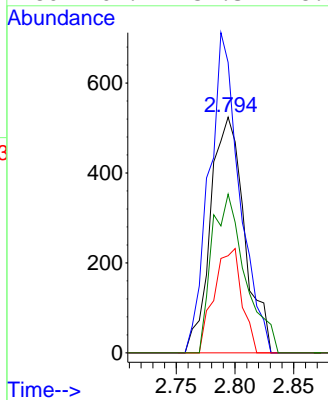
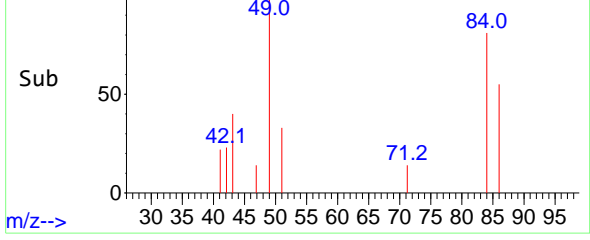
84 100

49 123.3 101.0 151.6

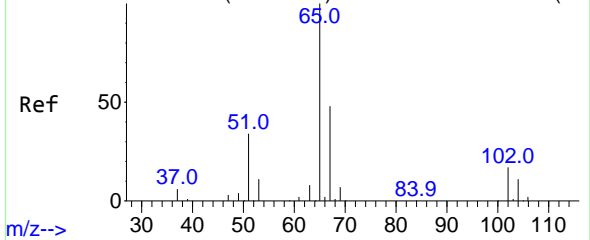
51 41.2 31.1 46.7

86 67.4 52.3 78.5

Abundance Scan 280 (2.794 min): VX032845.D\data.ms (-23



Abundance Scan 799 (5.958 min): VX032402.D\data.ms (-78



#33

1,2-Dichloroethane-d4

Concen: 50.321 ug/l

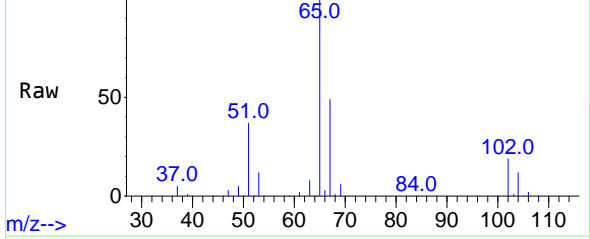
RT: 5.952 min Scan# 798

Delta R.T. -0.006 min

Lab File: VX032845.D

Acq: 16 Nov 2022 05:02

Abundance Scan 798 (5.952 min): VX032845.D\data.ms



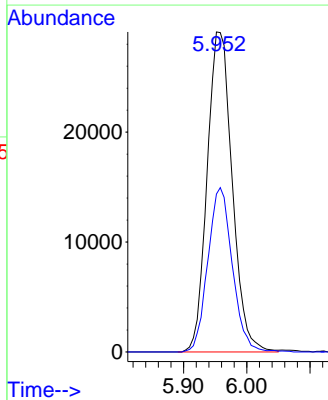
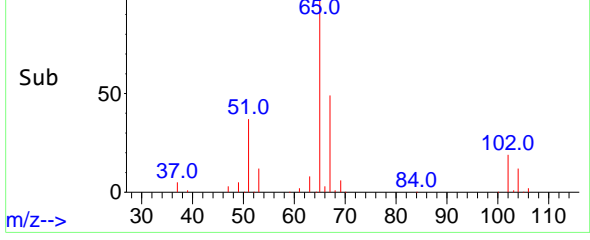
Tgt Ion: 65 Resp: 80173

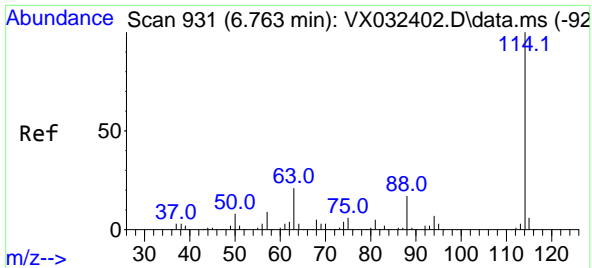
Ion Ratio Lower Upper

65 100

67 50.2 0.0 101.8

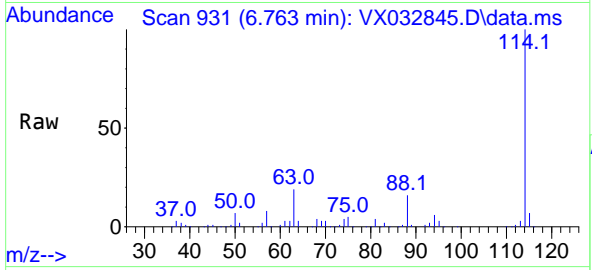
Abundance Scan 798 (5.952 min): VX032845.D\data.ms (-75





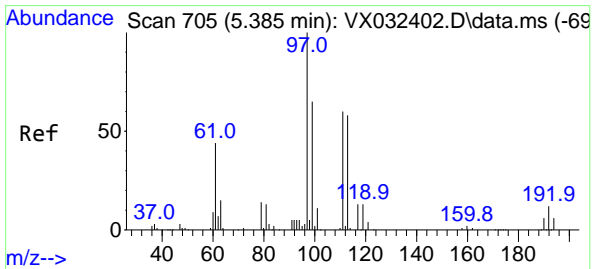
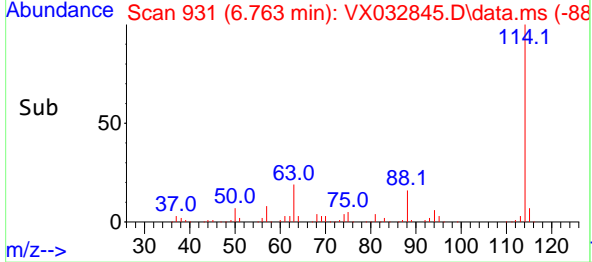
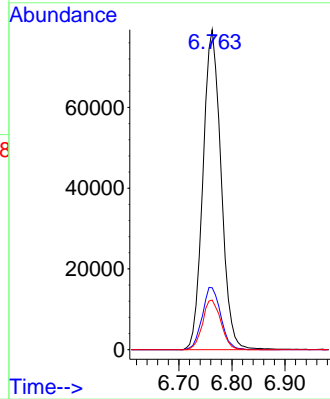
#34
 1,4-Difluorobenzene
 Concen: 50.000 ug/l
 RT: 6.763 min Scan# 911
 Delta R.T. -0.000 min
 Lab File: VX032845.D
 Acq: 16 Nov 2022 05:02

Instrument : MSVOA_X
 ClientSampleId :

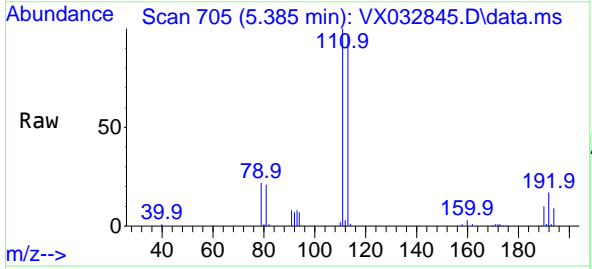


Tgt Ion:114 Resp: 187925

| Ion | Ratio | Lower | Upper |
|-----|-------|-------|-------|
| 114 | 100 | | |
| 63 | 19.3 | 0.0 | 41.6 |
| 88 | 15.5 | 0.0 | 33.4 |

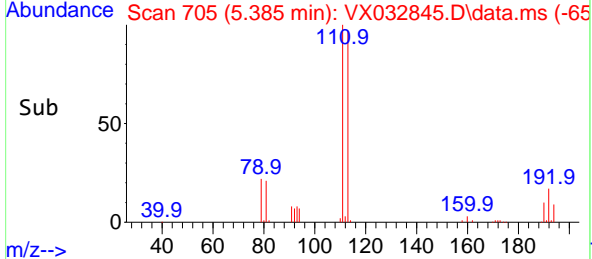
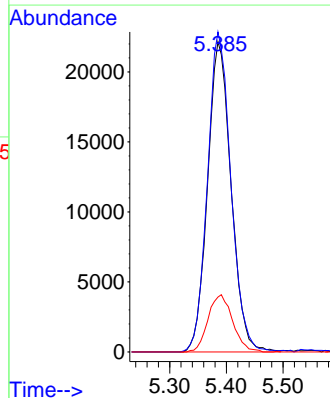


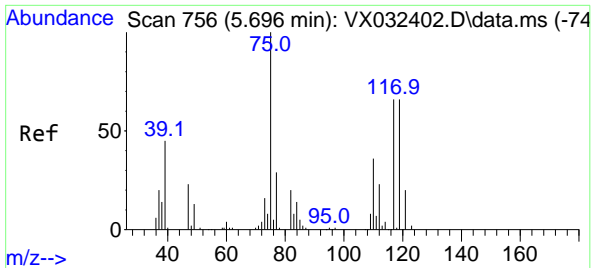
#35
 Dibromofluoromethane
 Concen: 47.667 ug/l
 RT: 5.385 min Scan# 705
 Delta R.T. -0.000 min
 Lab File: VX032845.D
 Acq: 16 Nov 2022 05:02



Tgt Ion:113 Resp: 63897

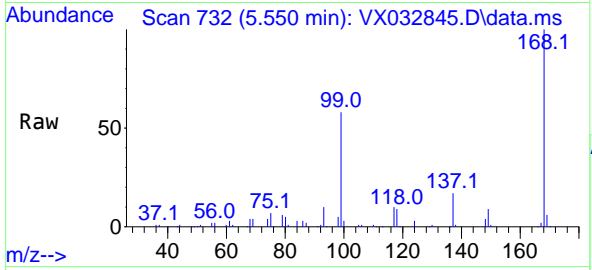
| Ion | Ratio | Lower | Upper |
|-----|-------|-------|-------|
| 113 | 100 | | |
| 111 | 102.7 | 82.4 | 123.6 |
| 192 | 19.3 | 15.4 | 23.2 |



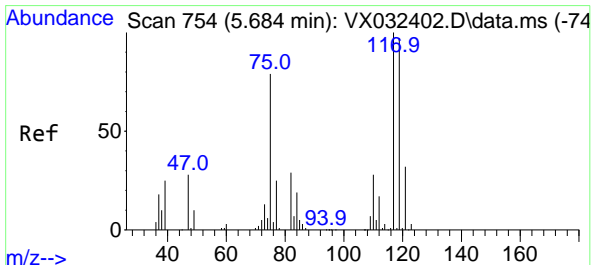
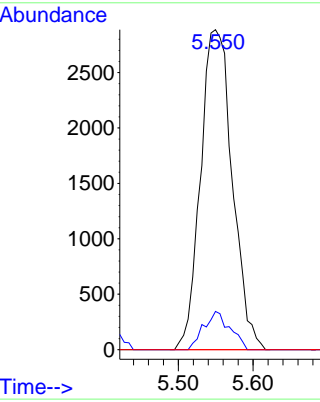
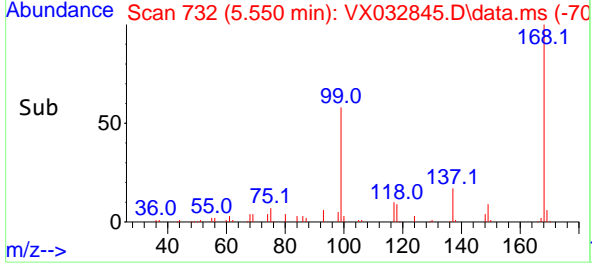


#36
 1,1-Dichloropropene
 Concen: 4.580 ug/l
 RT: 5.550 min Scan# 711
 Delta R.T. -0.146 min
 Lab File: VX032845.D
 Acq: 16 Nov 2022 05:02

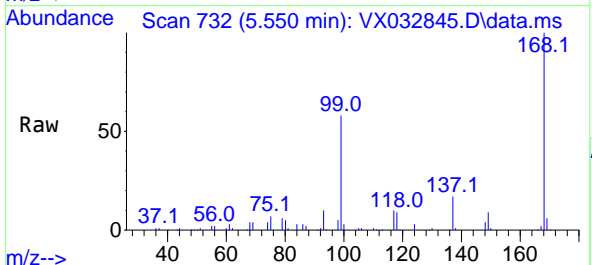
Instrument :
 MSVOA_X
 ClientSampleId :



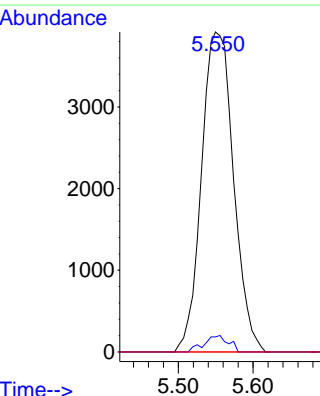
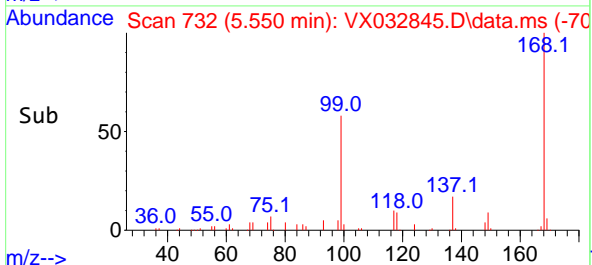
Tgt Ion: 75 Resp: 8550
 Ion Ratio Lower Upper
 75 100
 110 9.8 18.4 55.2#
 77 0.0 24.5 36.7#

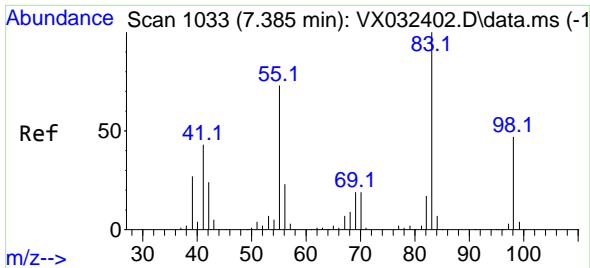


#38
 Carbon Tetrachloride
 Concen: 5.642 ug/l
 RT: 5.550 min Scan# 732
 Delta R.T. -0.134 min
 Lab File: VX032845.D
 Acq: 16 Nov 2022 05:02



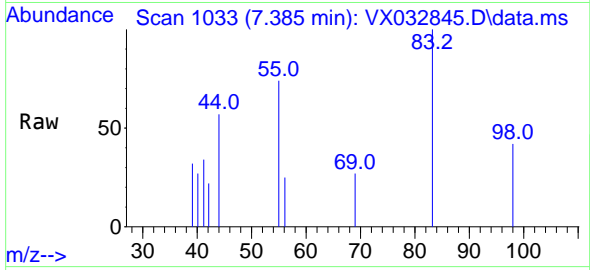
Tgt Ion: 117 Resp: 11682
 Ion Ratio Lower Upper
 117 100
 119 4.7 77.2 115.8#
 121 0.0 25.8 38.6#



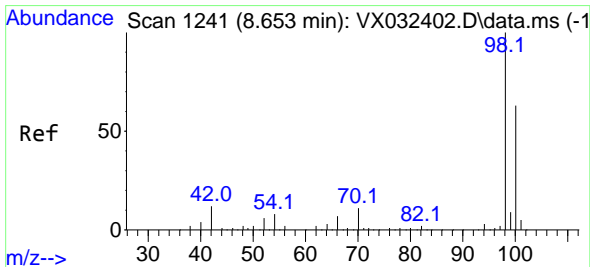
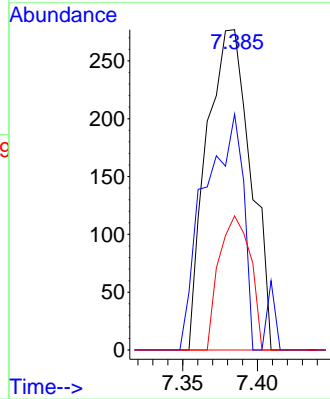
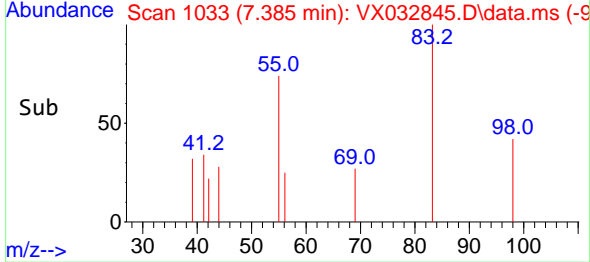


#39
 Methylcyclohexane
 Concen: 0.256 ug/l
 RT: 7.385 min Scan# 1033
 Delta R.T. -0.000 min
 Lab File: VX032845.D
 Acq: 16 Nov 2022 05:02

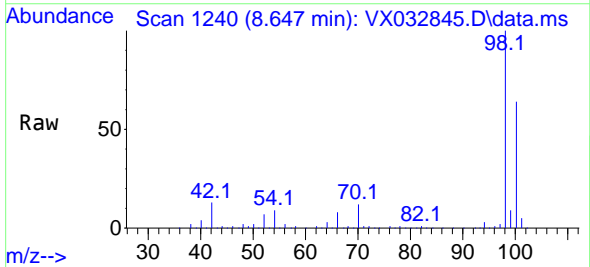
Instrument : MSVOA_X
 ClientSampleId :



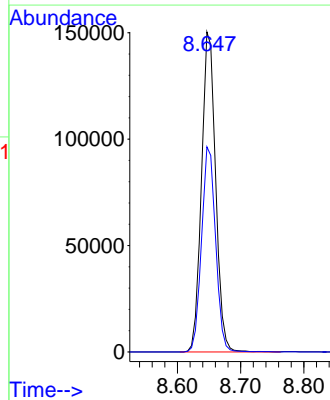
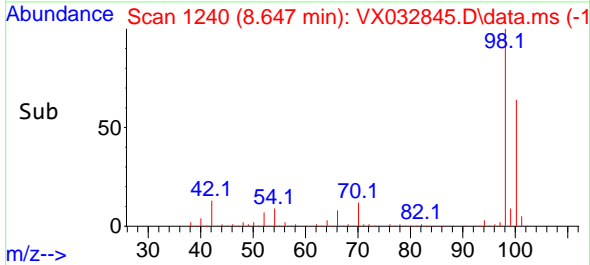
Tgt Ion: 83 Resp: 566
 Ion Ratio Lower Upper
 83 100
 55 73.6 58.4 87.6
 98 41.9 37.2 55.8

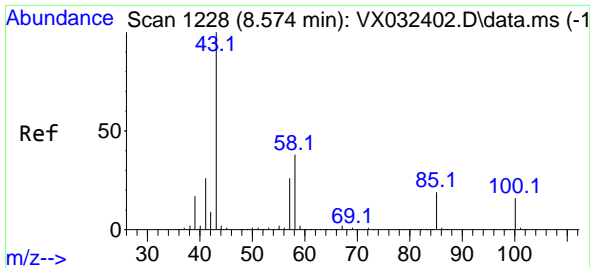


#50
 Toluene-d8
 Concen: 50.094 ug/l
 RT: 8.647 min Scan# 1240
 Delta R.T. -0.006 min
 Lab File: VX032845.D
 Acq: 16 Nov 2022 05:02



Tgt Ion: 98 Resp: 233499
 Ion Ratio Lower Upper
 98 100
 100 64.0 50.9 76.3

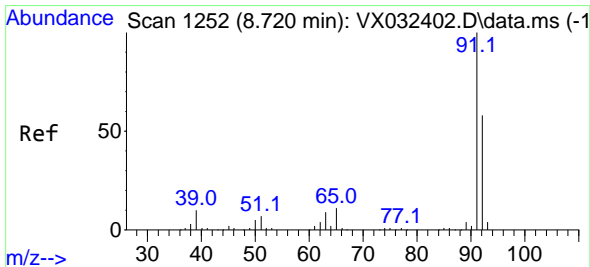
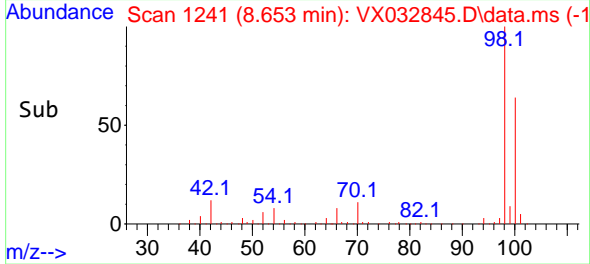
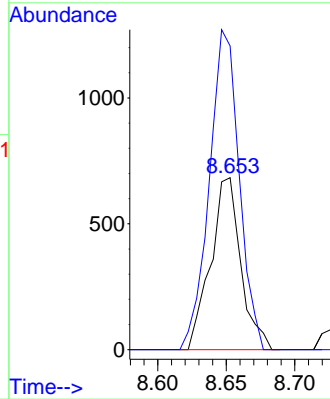
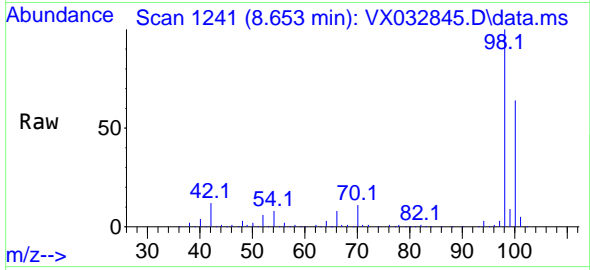




#51
 4-Methyl-2-Pentanone
 Concen: 0.556 ug/l
 RT: 8.653 min Scan# 11
 Delta R.T. 0.079 min
 Lab File: VX032845.D
 Acq: 16 Nov 2022 05:02

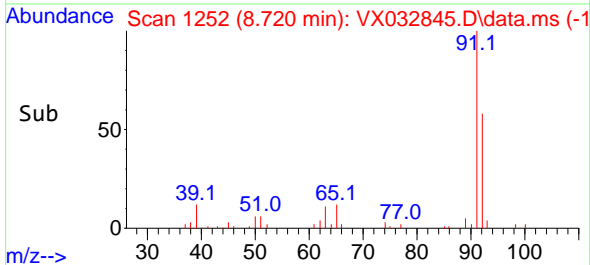
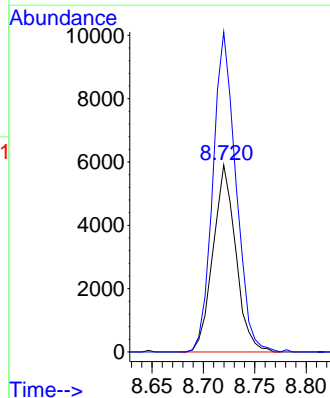
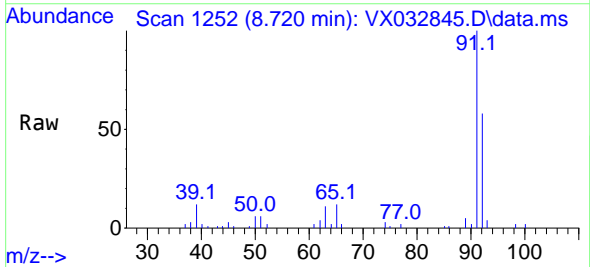
Instrument :
 MSVOA_X
 ClientSampleId :

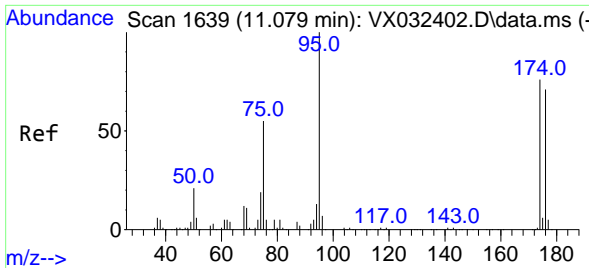
Tgt Ion: 43 Resp: 1045
 Ion Ratio Lower Upper
 43 100
 58 184.2 30.9 46.3#



#52
 Toluene
 Concen: 2.640 ug/l
 RT: 8.720 min Scan# 1252
 Delta R.T. -0.000 min
 Lab File: VX032845.D
 Acq: 16 Nov 2022 05:02

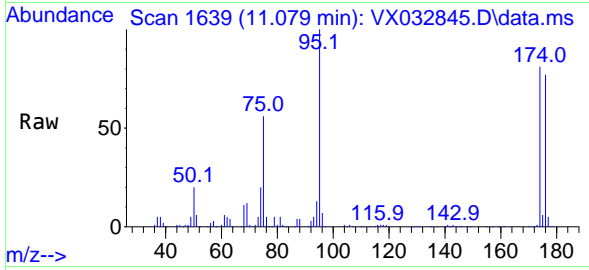
Tgt Ion: 92 Resp: 9098
 Ion Ratio Lower Upper
 92 100
 91 173.0 138.3 207.5



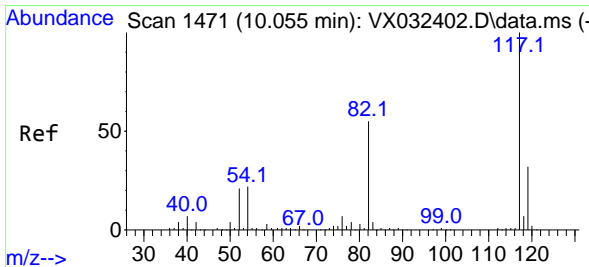
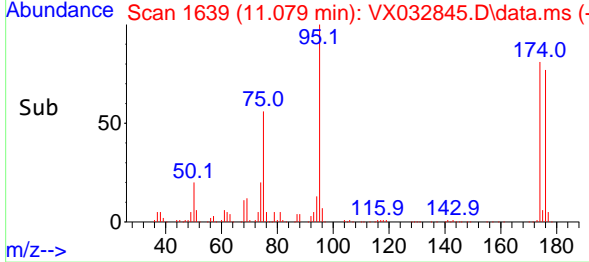
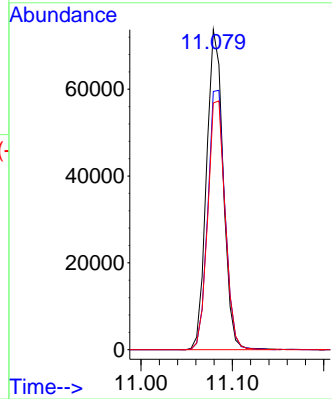


#62
 4-Bromofluorobenzene
 Concen: 51.135 ug/l
 RT: 11.079 min Scan# 11
 Delta R.T. -0.000 min
 Lab File: VX032845.D
 Acq: 16 Nov 2022 05:02

Instrument : MSVOA_X
 ClientSampleId :

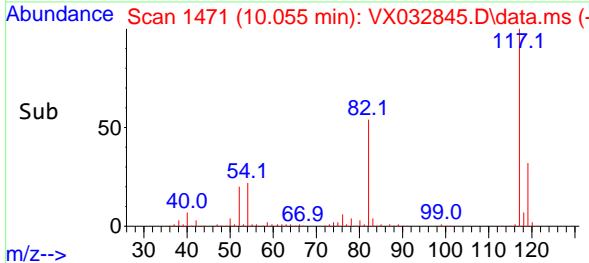
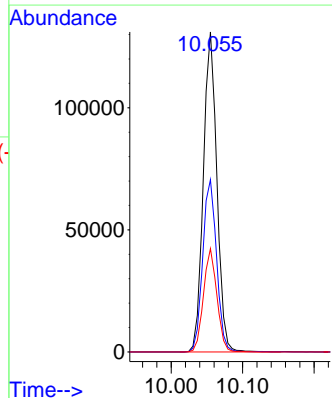
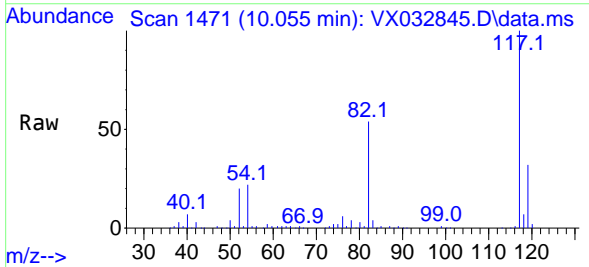


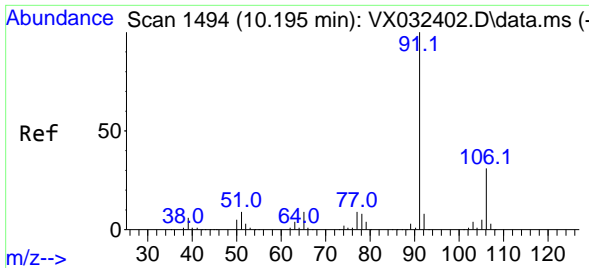
Tgt Ion: 95 Resp: 93105
 Ion Ratio Lower Upper
 95 100
 174 83.8 0.0 164.0
 176 81.2 0.0 154.4



#63
 Chlorobenzene-d5
 Concen: 50.000 ug/l
 RT: 10.055 min Scan# 1471
 Delta R.T. -0.000 min
 Lab File: VX032845.D
 Acq: 16 Nov 2022 05:02

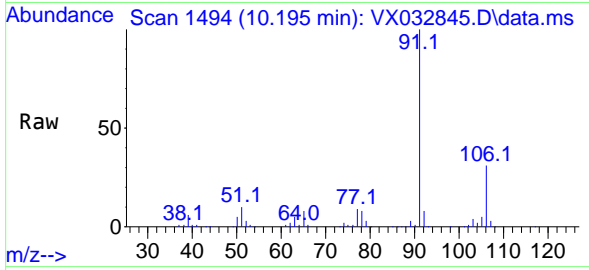
Tgt Ion: 117 Resp: 172419
 Ion Ratio Lower Upper
 117 100
 82 53.9 44.3 66.5
 119 32.3 25.7 38.5



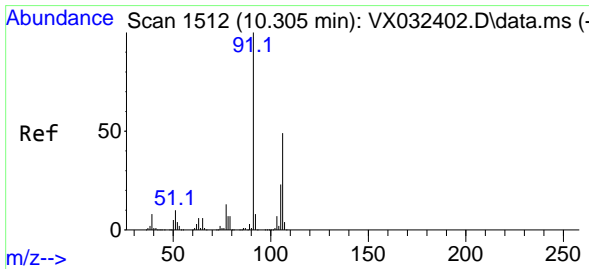
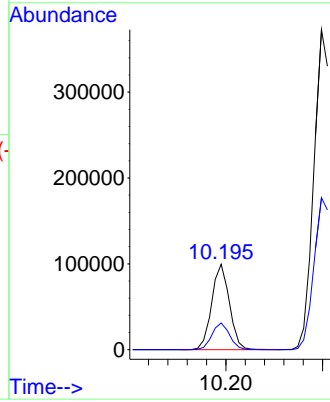
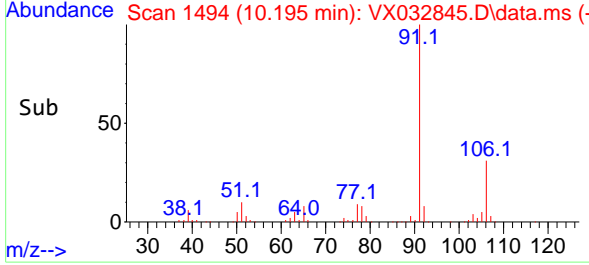


#67
 Ethyl Benzene
 Concen: 18.294 ug/l
 RT: 10.195 min Scan# 1494
 Delta R.T. -0.000 min
 Lab File: VX032845.D
 Acq: 16 Nov 2022 05:02

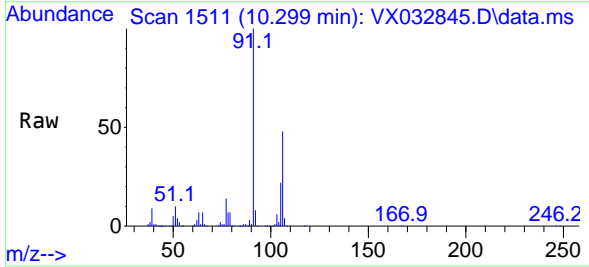
Instrument : MSVOA_X
 ClientSampleId :



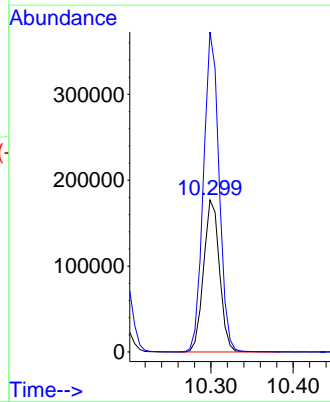
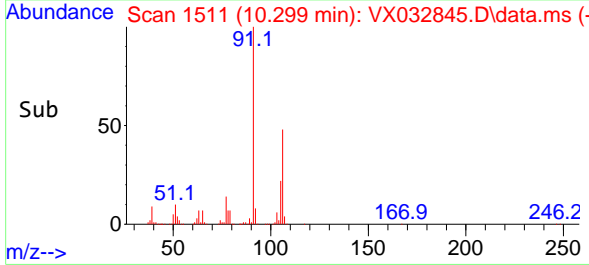
Tgt Ion: 91 Resp: 126349
 Ion Ratio Lower Upper
 91 100
 106 31.2 25.0 37.6

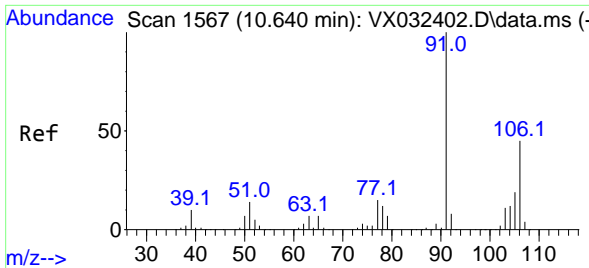


#68
 m/p-Xylenes
 Concen: 88.714 ug/l
 RT: 10.299 min Scan# 1511
 Delta R.T. -0.006 min
 Lab File: VX032845.D
 Acq: 16 Nov 2022 05:02



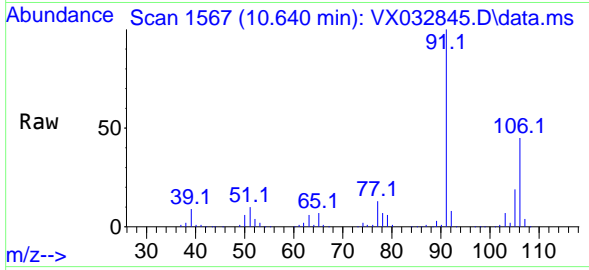
Tgt Ion: 106 Resp: 237923
 Ion Ratio Lower Upper
 106 100
 91 206.5 164.5 246.7



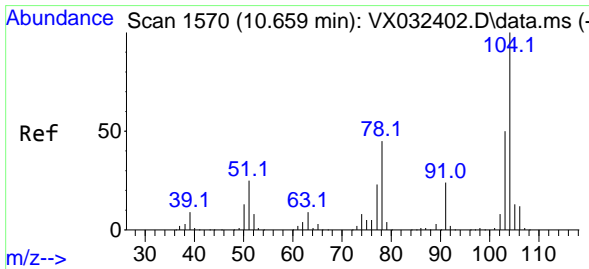
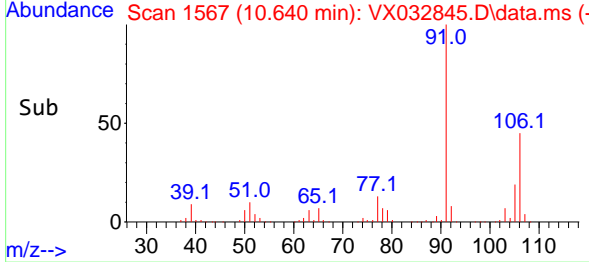
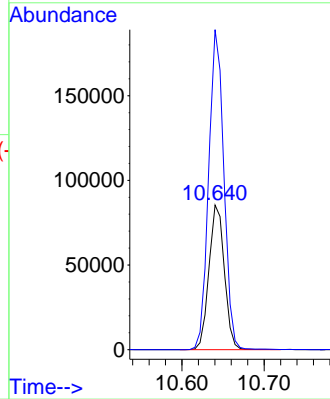


#69
 o-Xylene
 Concen: 42.721 ug/l
 RT: 10.640 min Scan# 11
 Delta R.T. -0.000 min
 Lab File: VX032845.D
 Acq: 16 Nov 2022 05:02

Instrument :
 MSVOA_X
 ClientSampleId :

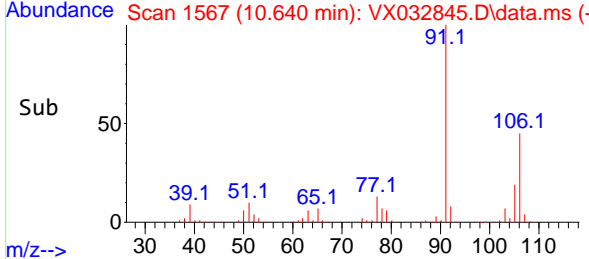
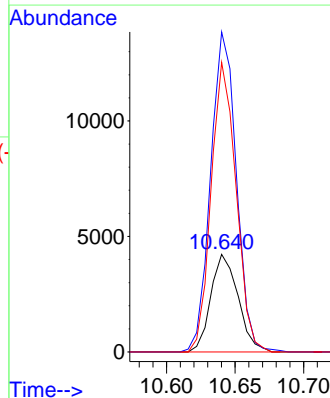
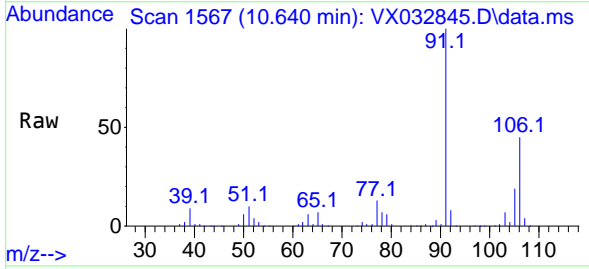


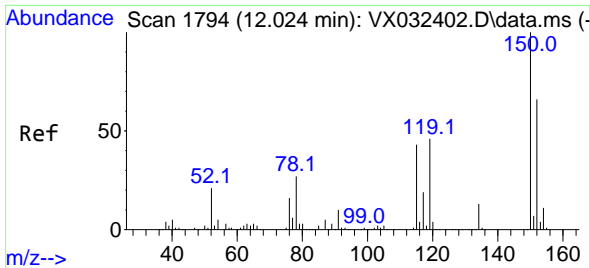
Tgt Ion:106 Resp: 111397
 Ion Ratio Lower Upper
 106 100
 91 217.8 109.2 327.6



#70
 Styrene
 Concen: 1.349 ug/l
 RT: 10.640 min Scan# 1567
 Delta R.T. -0.018 min
 Lab File: VX032845.D
 Acq: 16 Nov 2022 05:02

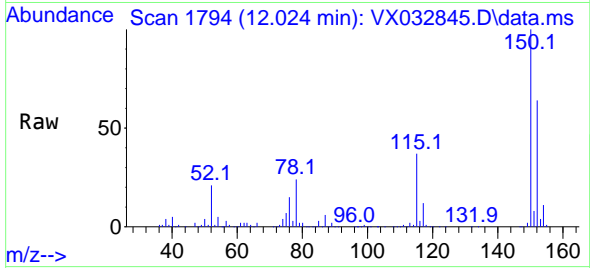
Tgt Ion:104 Resp: 5846
 Ion Ratio Lower Upper
 104 100
 78 309.6 41.8 62.8#
 103 271.6 44.5 66.7#



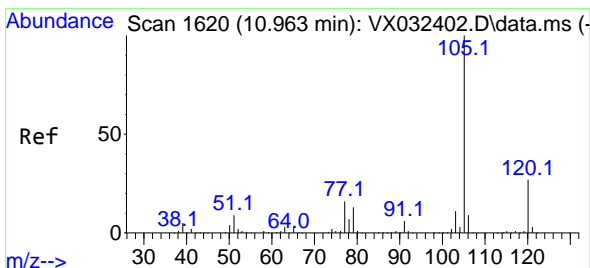
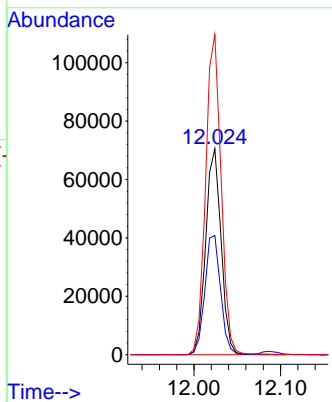
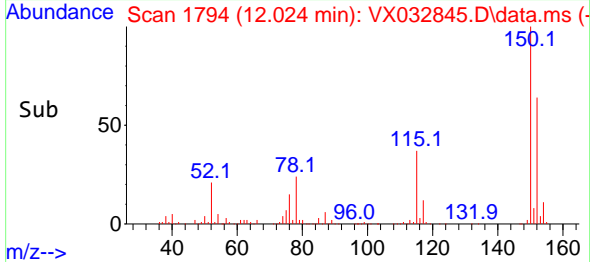


#72
 1,4-Dichlorobenzene-d4
 Concen: 50.000 ug/l
 RT: 12.024 min Scan# 11
 Delta R.T. -0.000 min
 Lab File: VX032845.D
 Acq: 16 Nov 2022 05:02

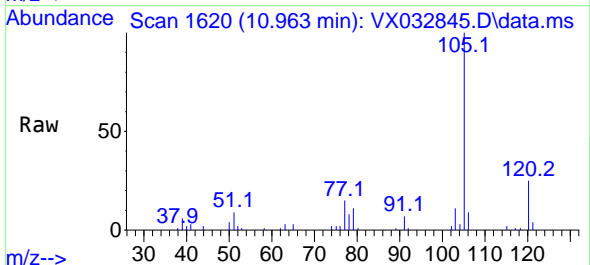
Instrument :
 MSVOA_X
 ClientSampleId :



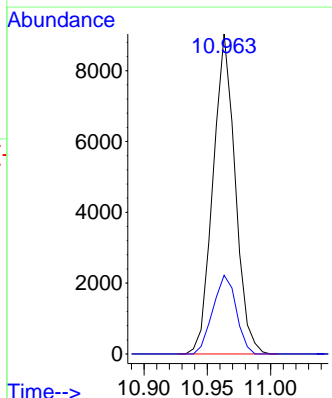
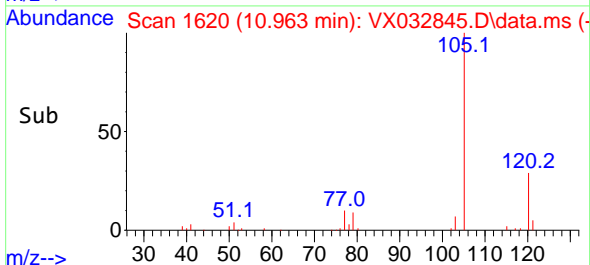
Tgt Ion:152 Resp: 87030
 Ion Ratio Lower Upper
 152 100
 115 59.4 44.0 132.0
 150 156.1 0.0 351.8

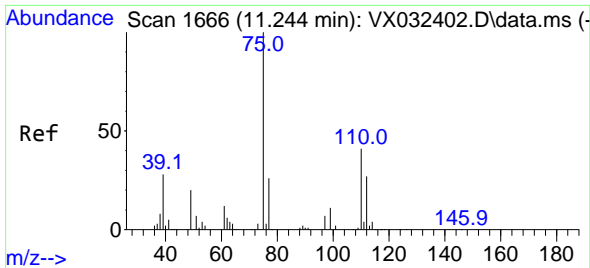


#73
 Isopropylbenzene
 Concen: 1.595 ug/l
 RT: 10.963 min Scan# 1620
 Delta R.T. -0.000 min
 Lab File: VX032845.D
 Acq: 16 Nov 2022 05:02



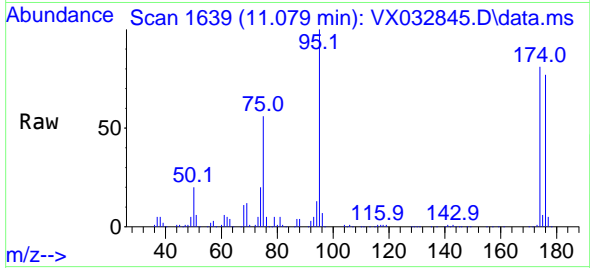
Tgt Ion:105 Resp: 10998
 Ion Ratio Lower Upper
 105 100
 120 25.8 13.1 39.3



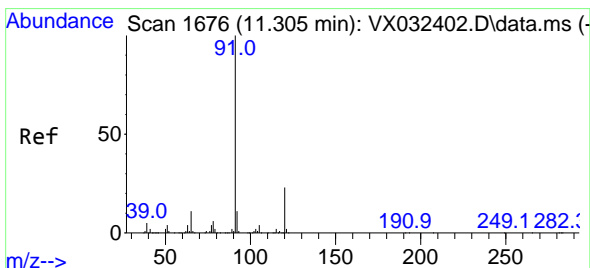
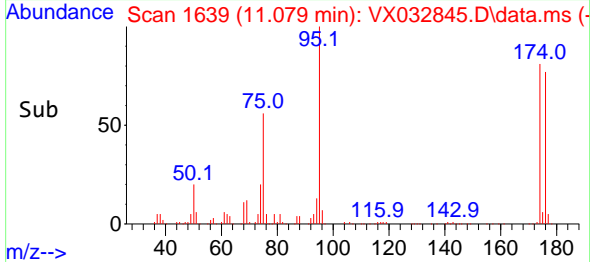
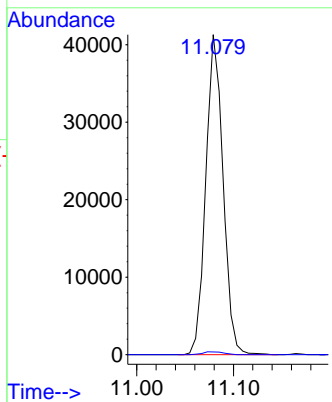


#76
 1,2,3-Trichloropropane
 Concen: 26.507 ug/l
 RT: 11.079 min Scan# 1639
 Delta R.T. -0.165 min
 Lab File: VX032845.D
 Acq: 16 Nov 2022 05:02

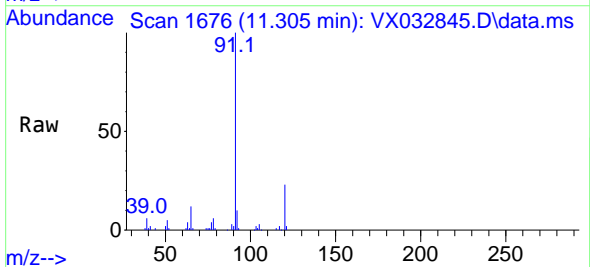
Instrument : MSVOA_X
 ClientSampleId :



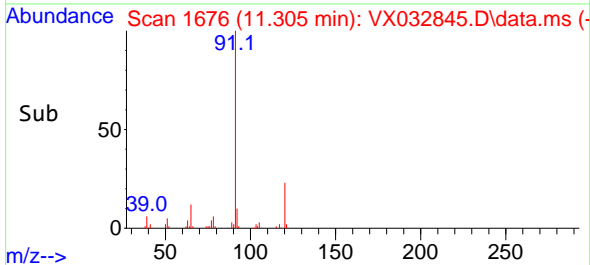
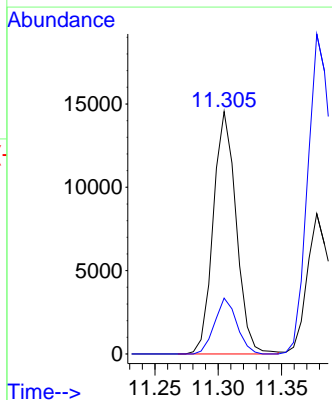
Tgt Ion: 75 Resp: 51323
 Ion Ratio Lower Upper
 75 100
 77 1.1 20.0 60.0#

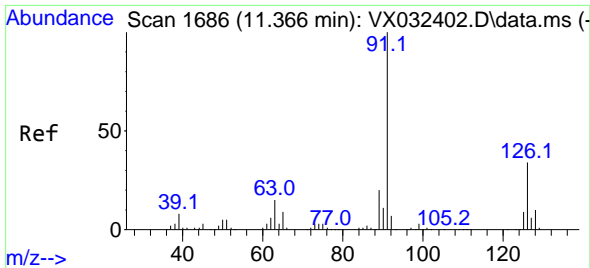


#78
 n-propylbenzene
 Concen: 2.309 ug/l
 RT: 11.305 min Scan# 1676
 Delta R.T. -0.000 min
 Lab File: VX032845.D
 Acq: 16 Nov 2022 05:02



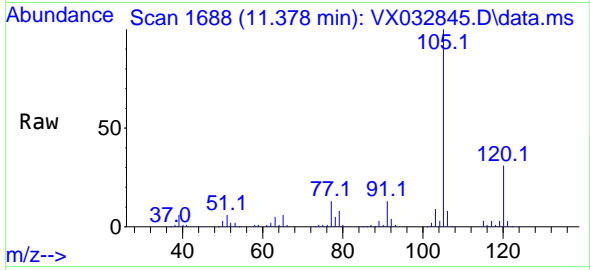
Tgt Ion: 91 Resp: 18348
 Ion Ratio Lower Upper
 91 100
 120 22.3 11.6 34.8



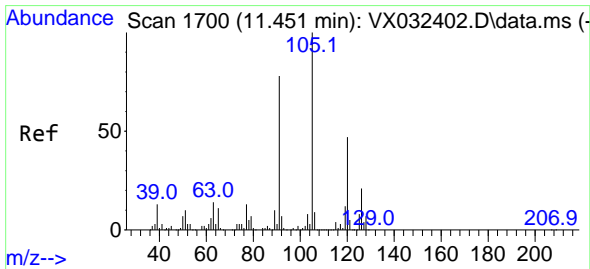
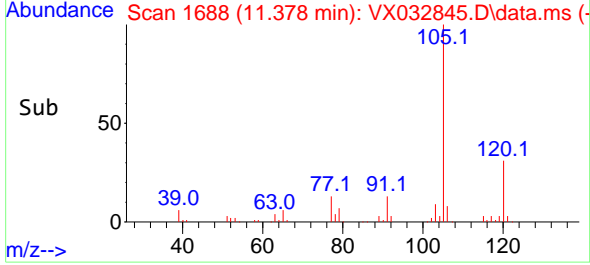
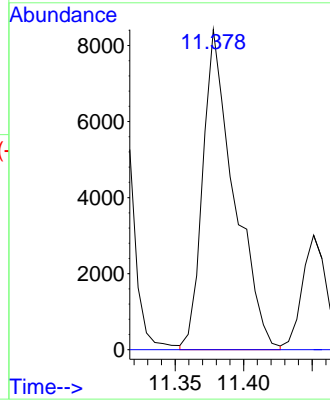


#79
 2-Chlorotoluene
 Concen: 2.810 ug/l
 RT: 11.378 min Scan# 11
 Delta R.T. 0.012 min
 Lab File: VX032845.D
 Acq: 16 Nov 2022 05:02

Instrument :
 MSVOA_X
 ClientSampleId :

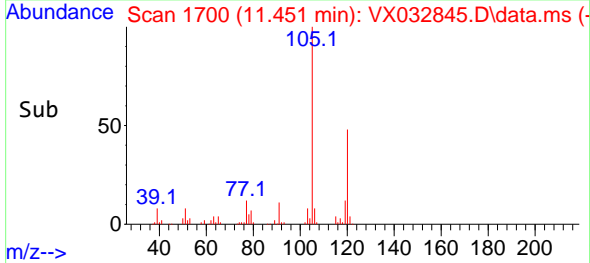
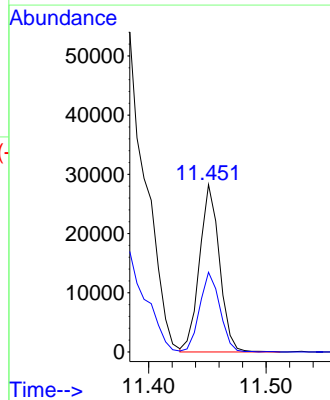
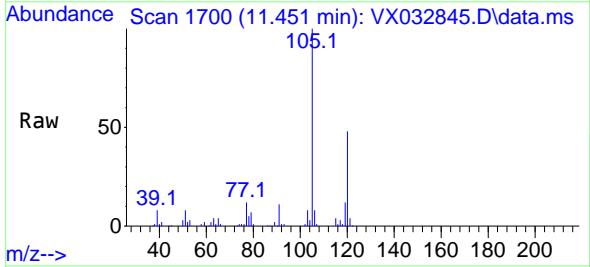


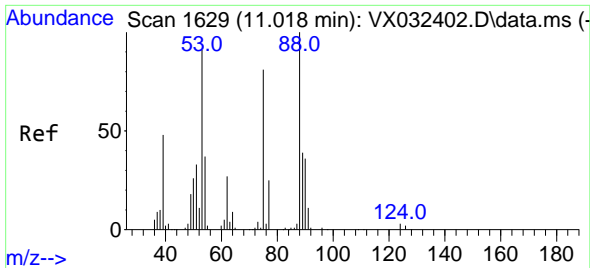
Tgt Ion: 91 Resp: 13373
 Ion Ratio Lower Upper
 91 100
 126 0.0 17.1 51.2#



#80
 1,3,5-Trimethylbenzene
 Concen: 5.687 ug/l
 RT: 11.451 min Scan# 1700
 Delta R.T. -0.000 min
 Lab File: VX032845.D
 Acq: 16 Nov 2022 05:02

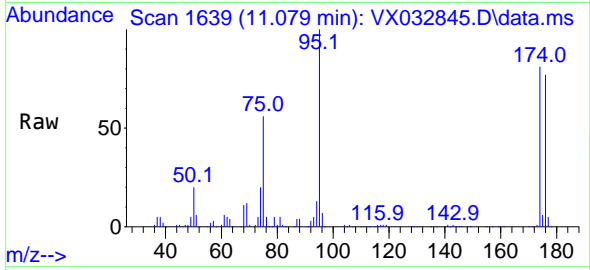
Tgt Ion: 105 Resp: 33518
 Ion Ratio Lower Upper
 105 100
 120 48.1 23.6 71.0



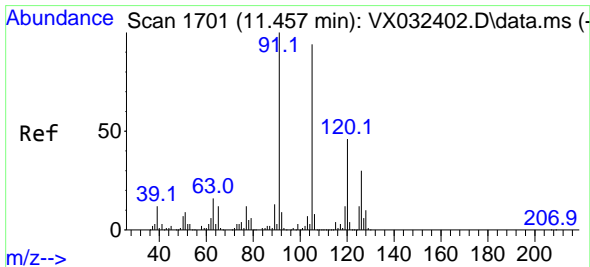
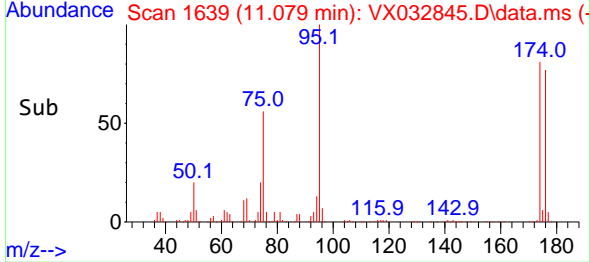
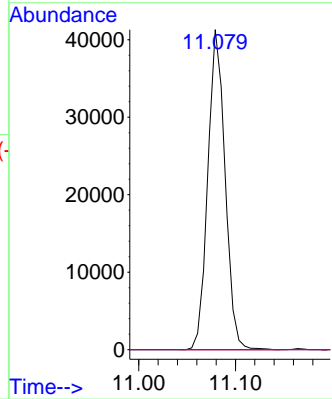


#81
 trans-1,4-Dichloro-2-butene
 Concen: 84.346 ug/l
 RT: 11.079 min Scan# 1
 Delta R.T. 0.061 min
 Lab File: VX032845.D
 Acq: 16 Nov 2022 05:02

Instrument :
 MSVOA_X
 ClientSampleId :

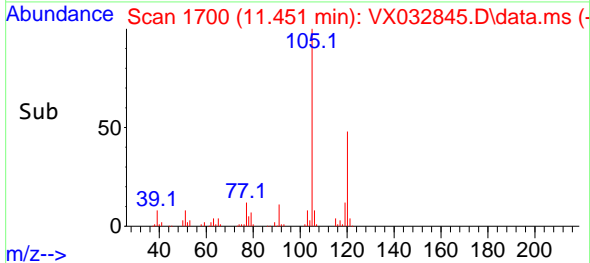
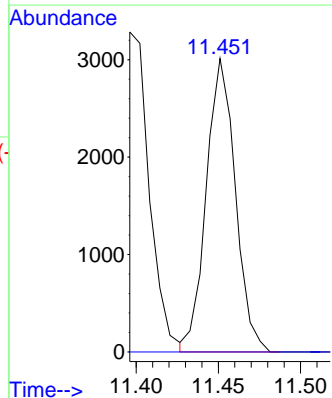
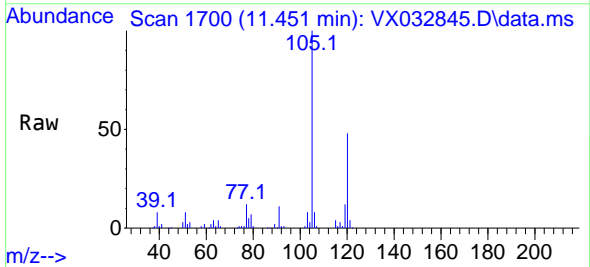


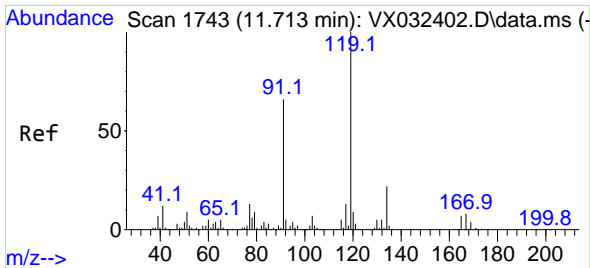
Tgt Ion: 75 Resp: 51323
 Ion Ratio Lower Upper
 75 100
 53 0.0 86.9 130.3#
 89 0.0 38.3 57.5#



#82
 4-Chlorotoluene
 Concen: 0.665 ug/l
 RT: 11.451 min Scan# 1700
 Delta R.T. -0.006 min
 Lab File: VX032845.D
 Acq: 16 Nov 2022 05:02

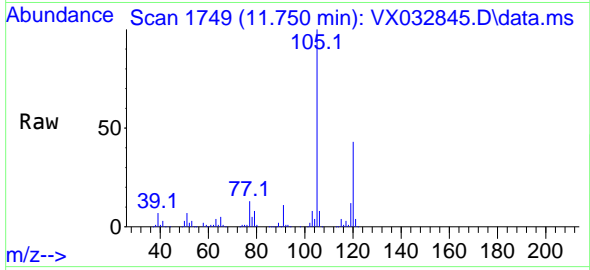
Tgt Ion: 91 Resp: 3700
 Ion Ratio Lower Upper
 91 100
 126 0.0 14.8 44.4#



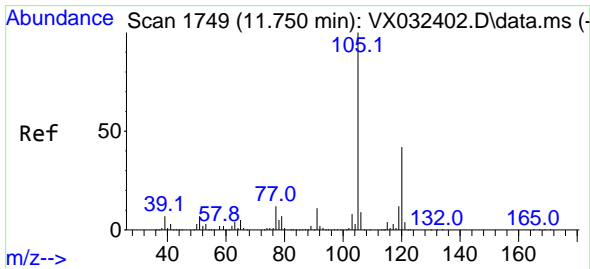
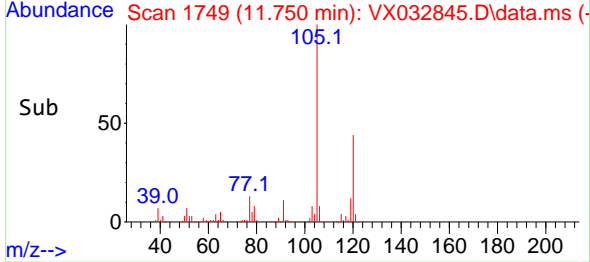
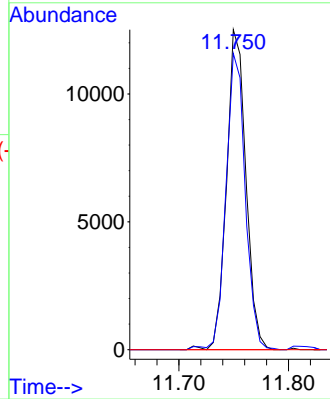


#83
 tert-Butylbenzene
 Concen: 2.606 ug/l
 RT: 11.750 min Scan# 1749
 Delta R.T. 0.036 min
 Lab File: VX032845.D
 Acq: 16 Nov 2022 05:02

Instrument : MSVOA_X
 ClientSampleId :

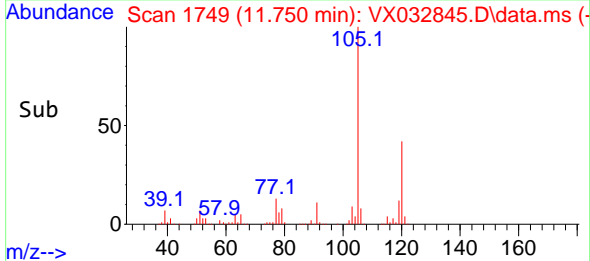
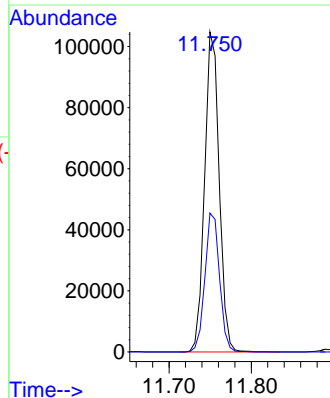
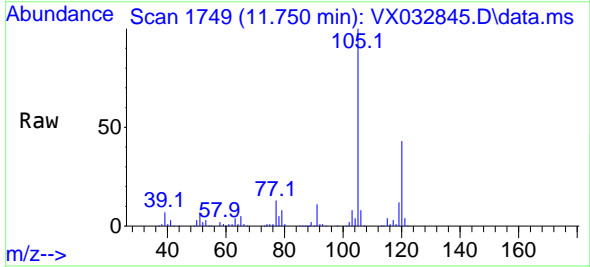


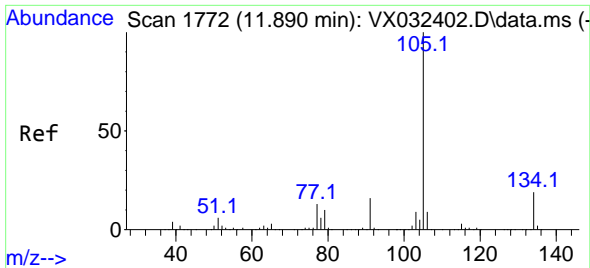
Tgt Ion:119 Resp: 15335
 Ion Ratio Lower Upper
 119 100
 91 92.4 29.4 88.2#
 134 0.0 11.0 33.0#



#84
 1,2,4-Trimethylbenzene
 Concen: 21.970 ug/l
 RT: 11.750 min Scan# 1749
 Delta R.T. -0.000 min
 Lab File: VX032845.D
 Acq: 16 Nov 2022 05:02

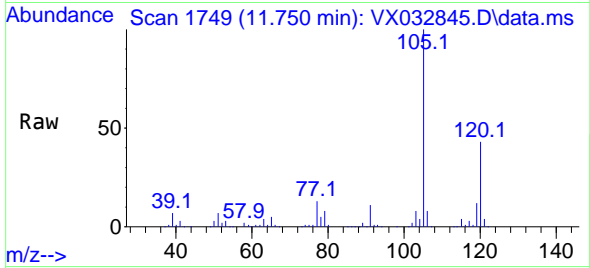
Tgt Ion:105 Resp: 128794
 Ion Ratio Lower Upper
 105 100
 120 43.6 21.9 65.5



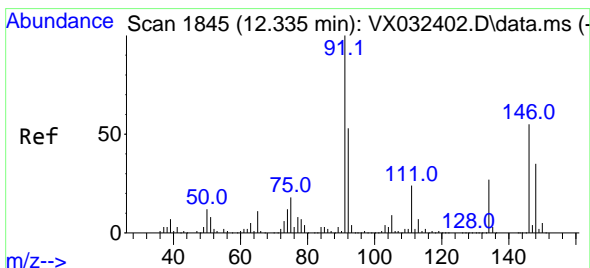
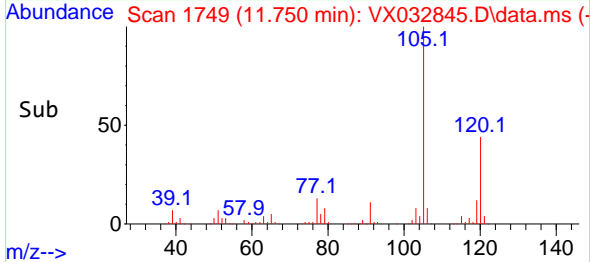
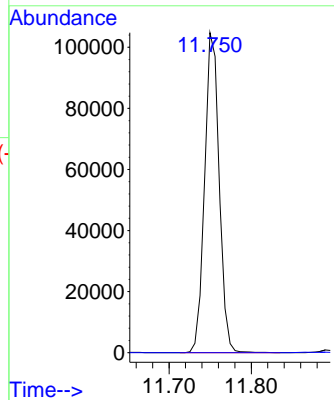


#85
 sec-Butylbenzene
 Concen: 18.190 ug/l
 RT: 11.750 min Scan# 11
 Delta R.T. -0.140 min
 Lab File: VX032845.D
 Acq: 16 Nov 2022 05:02

Instrument : MSVOA_X
 ClientSampleId :

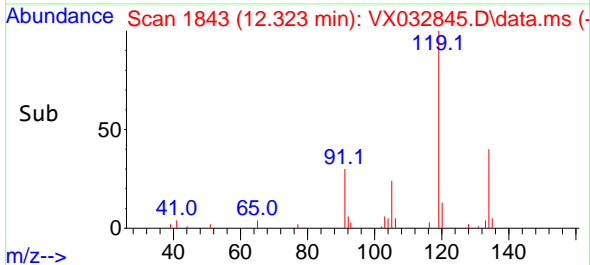
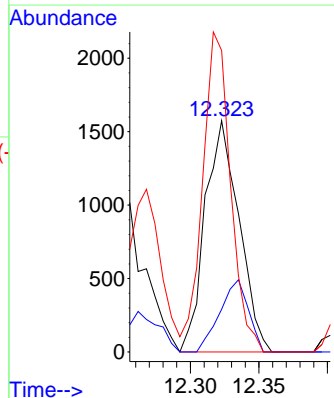
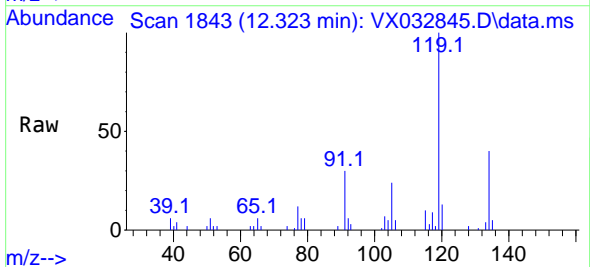


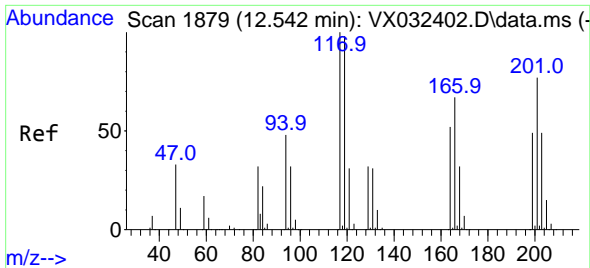
Tgt Ion:105 Resp: 128794
 Ion Ratio Lower Upper
 105 100
 134 0.0 9.9 29.7#



#89
 n-Butylbenzene
 Concen: 0.521 ug/l
 RT: 12.323 min Scan# 1843
 Delta R.T. -0.012 min
 Lab File: VX032845.D
 Acq: 16 Nov 2022 05:02

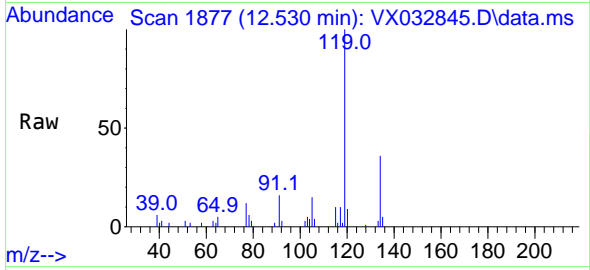
Tgt Ion: 91 Resp: 2724
 Ion Ratio Lower Upper
 91 100
 92 26.2 26.2 78.6
 134 113.2 12.9 38.6#



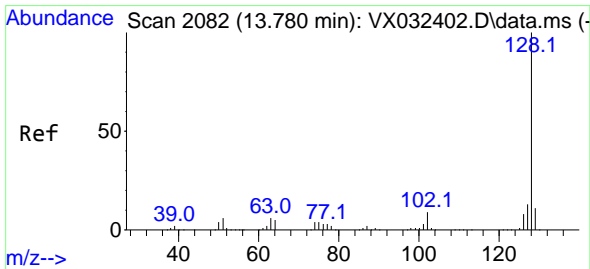
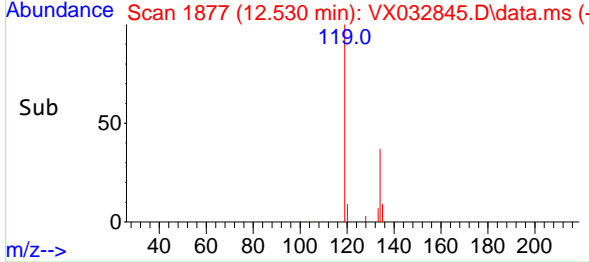
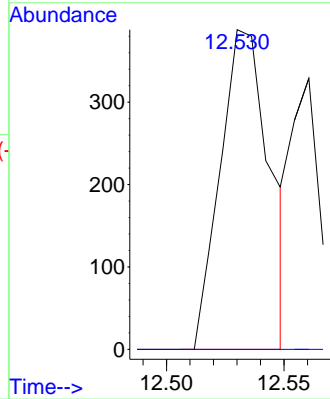


#90
 Hexachloroethane
 Concen: 0.579 ug/l
 RT: 12.530 min Scan# 11
 Delta R.T. -0.012 min
 Lab File: VX032845.D
 Acq: 16 Nov 2022 05:02

Instrument : MSVOA_X
 ClientSampleId :



Tgt Ion:117 Resp: 568
 Ion Ratio Lower Upper
 117 100
 201 0.0 37.6 112.9#



#95
 Naphthalene
 Concen: 3.528 ug/l
 RT: 13.774 min Scan# 2081
 Delta R.T. -0.006 min
 Lab File: VX032845.D
 Acq: 16 Nov 2022 05:02

Tgt Ion:128 Resp: 24103
 Ion Ratio Lower Upper
 128 100
 127 13.6 10.2 15.4
 129 11.6 8.9 13.3

