

Data Path : Z:\voasrv\HPCHEM1\MSVOA_X\Data\VX111522\
 Data File : VX032847.D
 Acq On : 16 Nov 2022 05:48
 Operator : JC/MD
 Sample : N5640-14 40X
 Misc : 5.0mL/MSVOA_X/WATER
 ALS Vial : 42 Sample Multiplier: 1

Instrument :
 MSVOA_X
 ClientSampleId :
 DUP111522

Integration Parameters: RTEINT.P

Integrator: RTE
 Smoothing : ON Filtering: 5
 Sampling : 1 Min Area: 3 % of largest Peak
 Start Thrs: 0.2 Max Peaks: 100
 Stop Thrs : 0 Peak Location: TOP

If leading or trailing edge < 100 prefer < Baseline drop else tangent >
 Peak separation: 5

Method : Z:\voasrv\HPCHEM1\MSVOA_X\Method\82X102622W.M
 Title : SW846 8260

Signal : TIC: VX032847.D\data.ms

peak #	R.T. min	first scan	max scan	last scan	PK TY	peak height	corr. area	corr. % max.	% of total
1	2.947	297	305	312	rBV2	4534	10159	1.78%	0.337%
2	4.574	565	572	583	rVB2	2083	6383	1.12%	0.212%
3	5.385	694	705	720	rBV2	68584	196680	34.49%	6.531%
4	5.556	720	733	748	rVB2	109100	309455	54.27%	10.276%
5	5.958	787	799	814	rBV	72348	195767	34.33%	6.501%
6	6.763	917	931	942	rBV	168085	402200	70.53%	13.355%
7	8.647	1234	1240	1256	rBV	365946	570215	100.00%	18.935%
8	10.055	1465	1471	1489	rBV	351819	472989	82.95%	15.706%
9	11.079	1634	1639	1650	rBV	327814	412819	72.40%	13.708%
10	12.024	1788	1794	1802	rBV	340457	434838	76.26%	14.439%

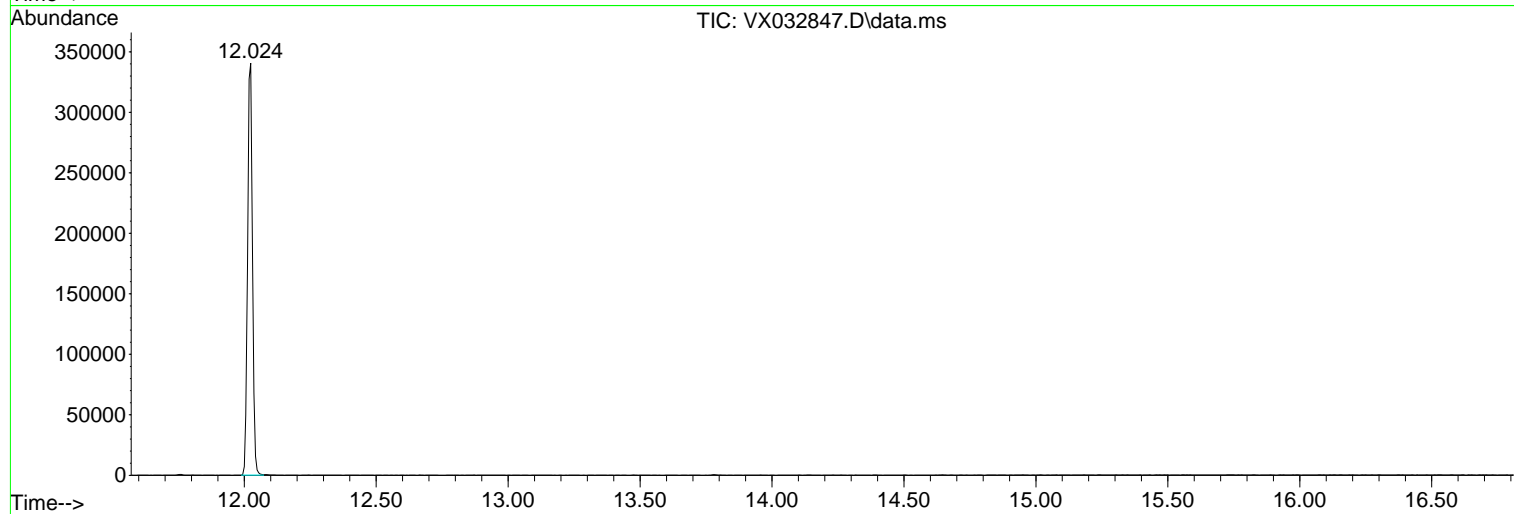
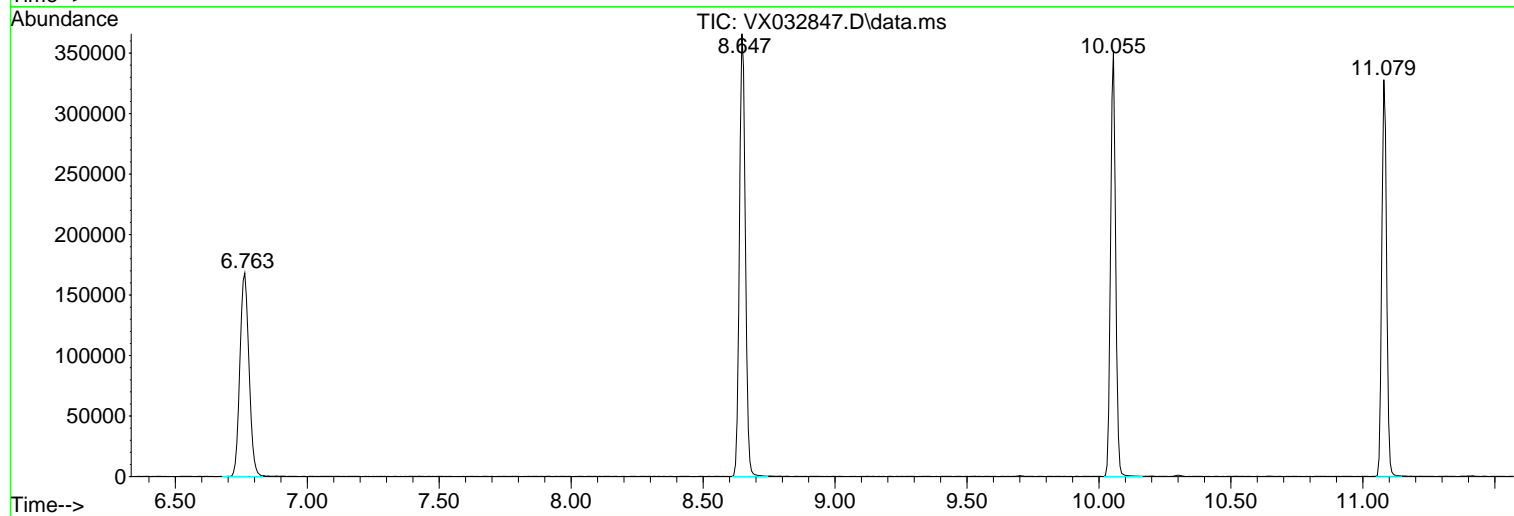
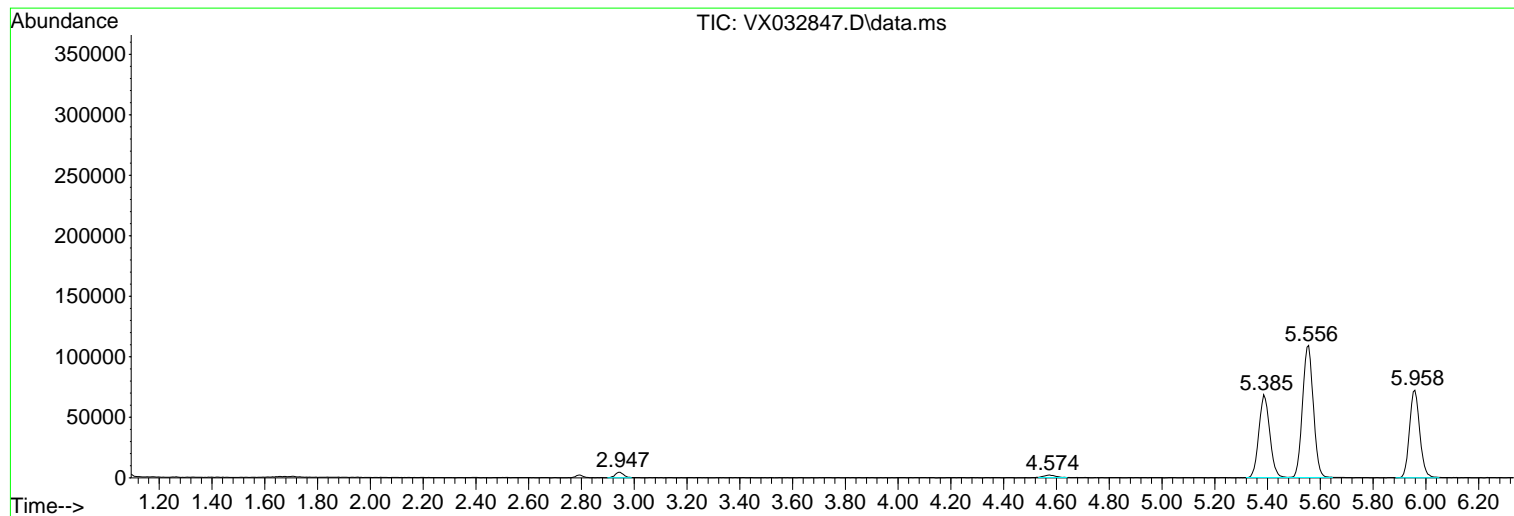
Sum of corrected areas: 3011505

Data Path : Z:\voasrv\HPCHEM1\MSVOA_X\Data\VX111522\
Data File : VX032847.D
Acq On : 16 Nov 2022 05:48
Operator : JC/MD
Sample : N5640-14 40X
Misc : 5.0mL/MSVOA_X/WATER
ALS Vial : 42 Sample Multiplier: 1

Instrument :
MSVOA_X
ClientSampleId :
DUP111522

Quant Method : Z:\voasrv\HPCHEM1\MSVOA_X\Method\82X102622W.M
Quant Title : SW846 8260

TIC Library : C:\Database\NIST20.L
TIC Integration Parameters: LSCINT.P



Library Search Compound Report

Data Path : Z:\voasrv\HPCHEM1\MSVOA_X\Data\VX111522\
Data File : VX032847.D
Acq On : 16 Nov 2022 05:48
Operator : JC/MD
Sample : N5640-14 40X
Misc : 5.0mL/MSVOA_X/WATER
ALS Vial : 42 Sample Multiplier: 1

Instrument :
MSVOA_X
ClientSampleId :
DUP111522

Quant Method : Z:\voasrv\HPCHEM1\MSVOA_X\Method\82X102622W.M
Quant Title : SW846 8260

TIC Library : C:\Database\NIST20.L
TIC Integration Parameters: LSCINT.P

No Library Search Compounds Detected

Data Path : Z:\voasrv\HPCHEM1\MSVOA_X\Data\VX111522\
Data File : VX032847.D
Acq On : 16 Nov 2022 05:48
Operator : JC/MD
Sample : N5640-14 40X
Misc : 5.0mL/MSVOA_X/WATER
ALS Vial : 42 Sample Multiplier: 1

Instrument :
MSVOA_X
ClientSampleId :
DUP111522

Quant Method : Z:\voasrv\HPCHEM1\MSVOA_X\Method\82X102622W.M
Quant Title : SW846 8260

TIC Library : C:\Database\NIST20.L
TIC Integration Parameters: LSCINT.P

TIC Top Hit name	RT	EstConc	Units	Response	#	RT	Resp	Conc
------------------	----	---------	-------	----------	---	----	------	------

|--Internal Standard--|