

Data Path : Z:\voasrv\HPCHEM1\MSVOA_X\Data\VX111622\
 Data File : VX032869.D
 Acq On : 16 Nov 2022 15:38
 Operator : JC/MD
 Sample : N5614-09
 Misc : 5.0mL/MSVOA_X/WATER
 ALS Vial : 12 Sample Multiplier: 1

Instrument :
 MSVOA_X
 ClientSampleId :
 MW-33

Quant Time: Nov 17 05:42:55 2022
 Quant Method : Z:\voasrv\HPCHEM1\MSVOA_X\Method\82X102622W.M
 Quant Title : SW846 8260
 QLast Update : Thu Oct 27 08:28:06 2022
 Response via : Initial Calibration

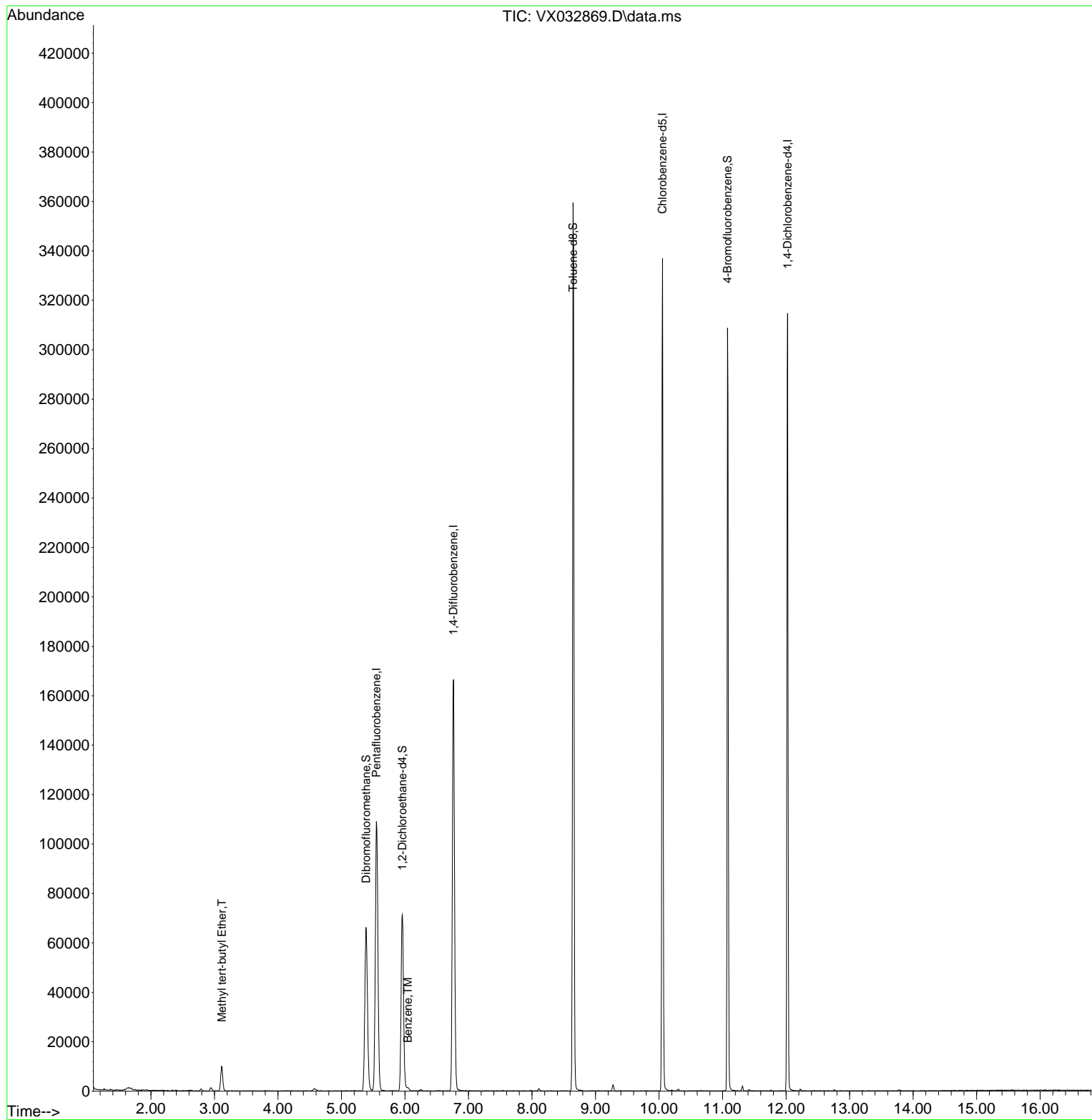
Compound	R.T.	QIon	Response	Conc	Units	Dev(Min)
Internal Standards						
1) Pentafluorobenzene	5.550	168	103742	50.000	ug/l	0.00
34) 1,4-Difluorobenzene	6.763	114	168694	50.000	ug/l	0.00
63) Chlorobenzene-d5	10.055	117	148996	50.000	ug/l	0.00
72) 1,4-Dichlorobenzene-d4	12.024	152	65456	50.000	ug/l	0.00
System Monitoring Compounds						
33) 1,2-Dichloroethane-d4	5.958	65	72161	50.061	ug/l	0.00
Spiked Amount	50.000	Range 78 - 117	Recovery	=	100.120%	
35) Dibromofluoromethane	5.385	113	57017	47.383	ug/l	0.00
Spiked Amount	50.000	Range 75 - 124	Recovery	=	94.760%	
50) Toluene-d8	8.647	98	210526	50.315	ug/l	0.00
Spiked Amount	50.000	Range 92 - 112	Recovery	=	100.620%	
62) 4-Bromofluorobenzene	11.079	95	76697	46.926	ug/l	0.00
Spiked Amount	50.000	Range 83 - 123	Recovery	=	93.860%	
Target Compounds						
19) Methyl tert-butyl Ether	3.117	73	10703	2.927	ug/l	99
40) Benzene	6.043	78	1383	0.292	ug/l	100

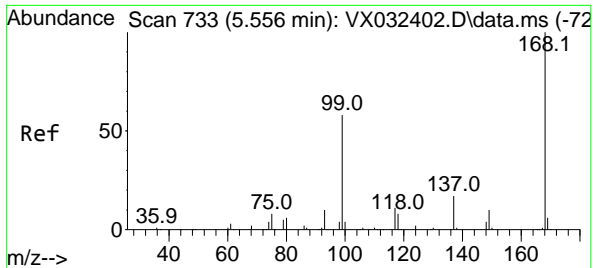
(#) = qualifier out of range (m) = manual integration (+) = signals summed

Data Path : Z:\voasrv\HPCHEM1\MSVOA_X\Data\VX111622\
Data File : VX032869.D
Acq On : 16 Nov 2022 15:38
Operator : JC/MD
Sample : N5614-09
Misc : 5.0mL/MSVOA_X/WATER
ALS Vial : 12 Sample Multiplier: 1

Instrument :
MSVOA_X
ClientSampleId :
MW-33

Quant Time: Nov 17 05:42:55 2022
Quant Method : Z:\voasrv\HPCHEM1\MSVOA_X\Method\82X102622W.M
Quant Title : SW846 8260
QLast Update : Thu Oct 27 08:28:06 2022
Response via : Initial Calibration

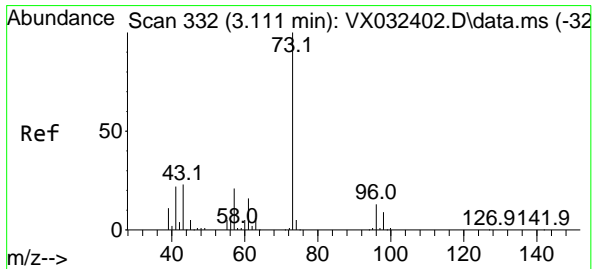
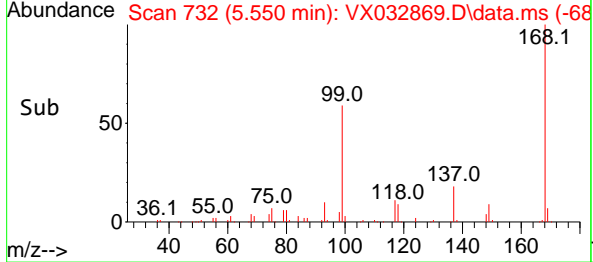
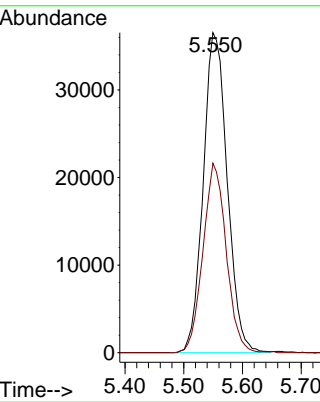
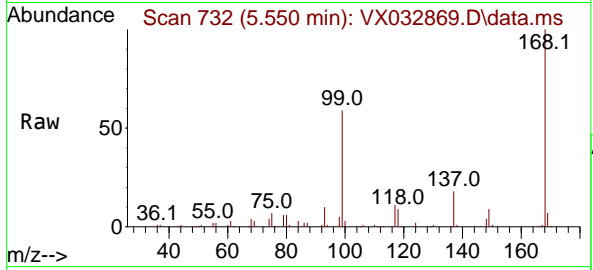




#1
 Pentafluorobenzene
 Concen: 50.000 ug/l
 RT: 5.550 min Scan# 71
 Delta R.T. -0.006 min
 Lab File: VX032869.D
 Acq: 16 Nov 2022 15:38

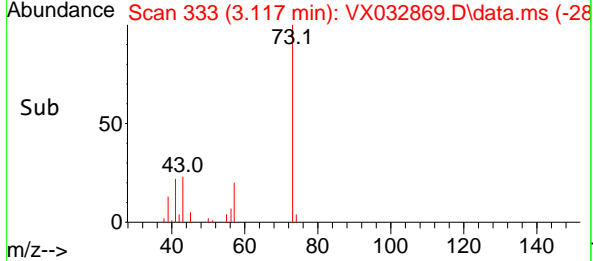
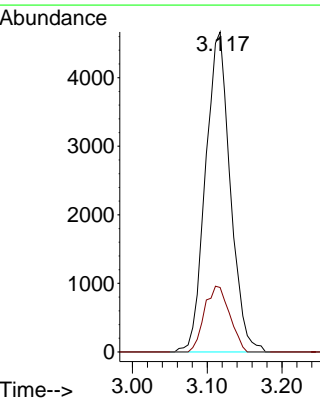
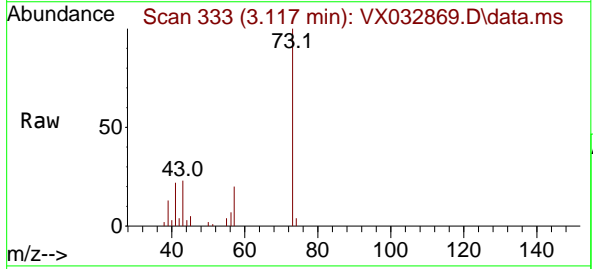
Instrument : MSVOA_X
 ClientSampleId : MW-33

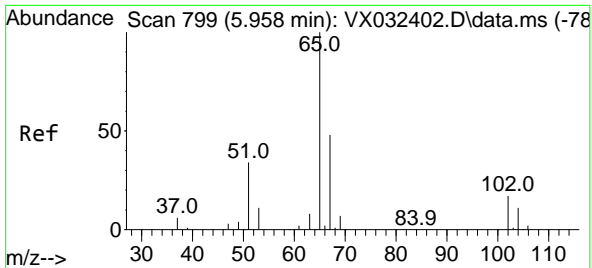
Tgt Ion:168 Resp: 103742
 Ion Ratio Lower Upper
 168 100
 99 59.2 46.1 69.1



#19
 Methyl tert-butyl Ether
 Concen: 2.927 ug/l
 RT: 3.117 min Scan# 333
 Delta R.T. 0.006 min
 Lab File: VX032869.D
 Acq: 16 Nov 2022 15:38

Tgt Ion: 73 Resp: 10703
 Ion Ratio Lower Upper
 73 100
 57 20.1 16.6 25.0

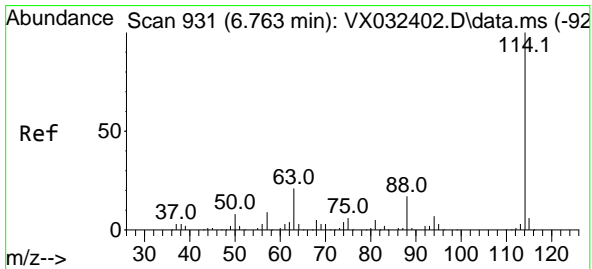
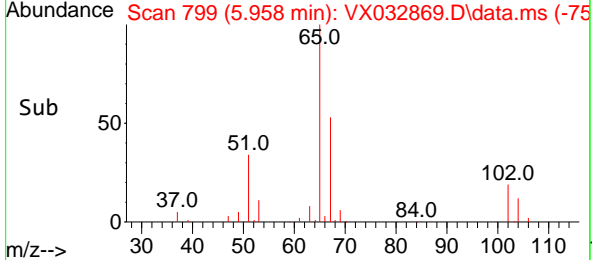
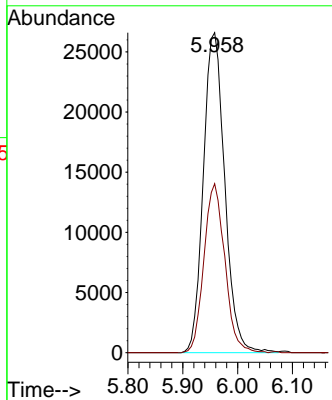
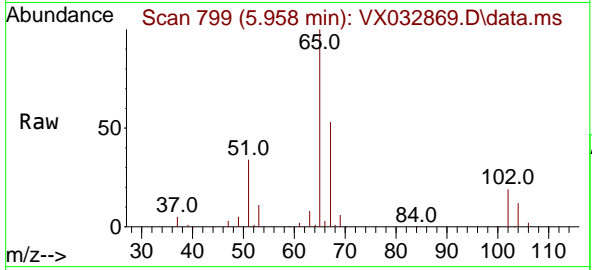




#33
 1,2-Dichloroethane-d4
 Concen: 50.061 ug/l
 RT: 5.958 min Scan# 799
 Delta R.T. -0.000 min
 Lab File: VX032869.D
 Acq: 16 Nov 2022 15:38

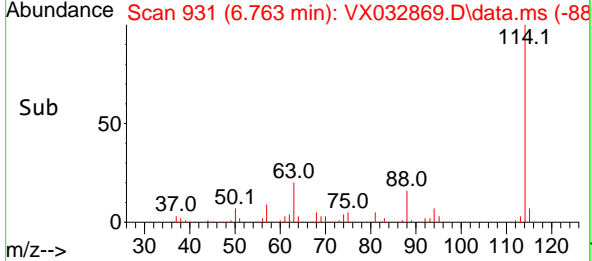
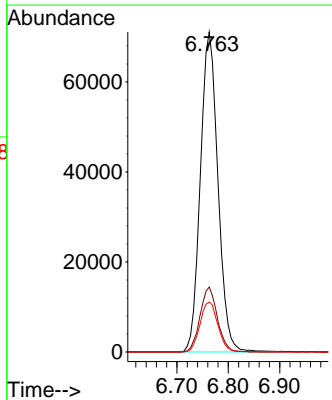
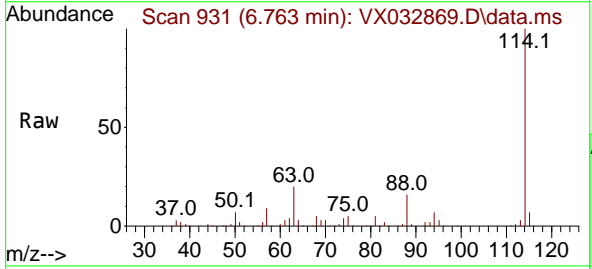
Instrument : MSVOA_X
 ClientSampleId : MW-33

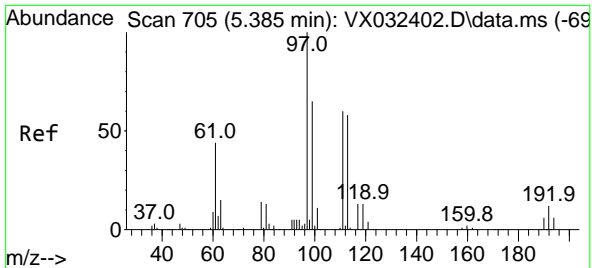
Tgt Ion: 65 Resp: 72161
 Ion Ratio Lower Upper
 65 100
 67 51.5 0.0 101.8



#34
 1,4-Difluorobenzene
 Concen: 50.000 ug/l
 RT: 6.763 min Scan# 931
 Delta R.T. -0.000 min
 Lab File: VX032869.D
 Acq: 16 Nov 2022 15:38

Tgt Ion: 114 Resp: 168694
 Ion Ratio Lower Upper
 114 100
 63 20.3 0.0 41.6
 88 15.6 0.0 33.4



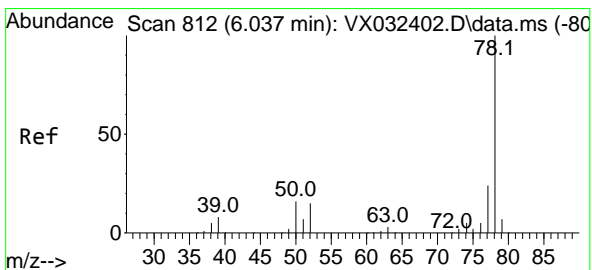
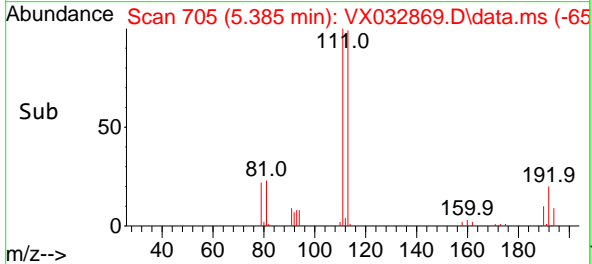
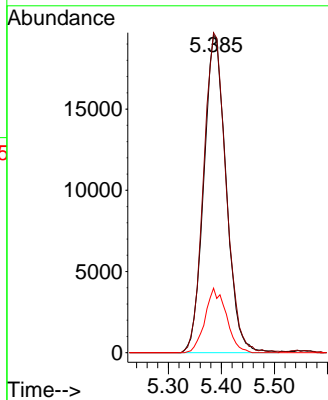
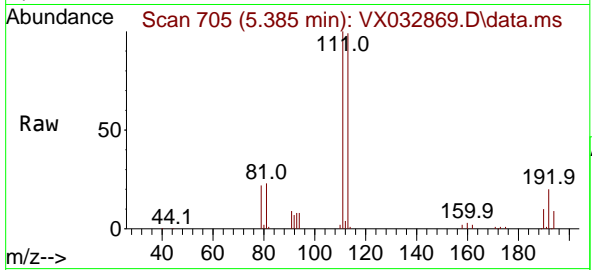


#35
 Dibromofluoromethane
 Concen: 47.383 ug/l
 RT: 5.385 min Scan# 705
 Delta R.T. -0.000 min
 Lab File: VX032869.D
 Acq: 16 Nov 2022 15:38

Instrument : MSVOA_X
 ClientSampleId : MW-33

Tgt Ion: 113 Resp: 57017

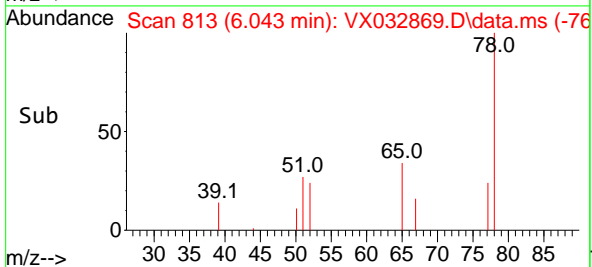
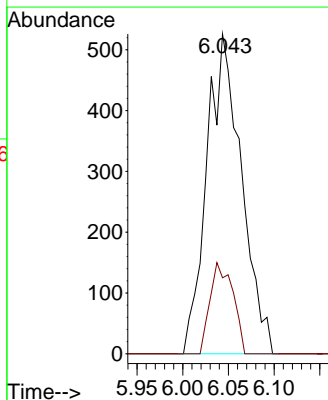
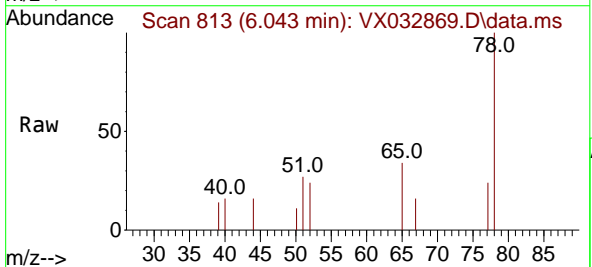
Ion	Ratio	Lower	Upper
113	100		
111	101.5	82.4	123.6
192	19.4	15.4	23.2

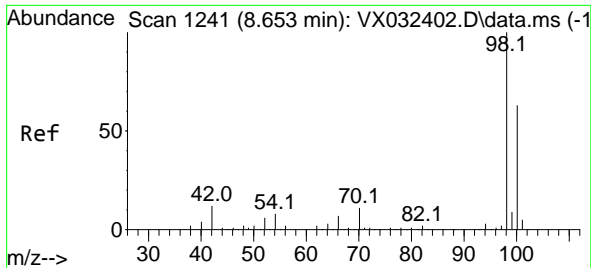


#40
 Benzene
 Concen: 0.292 ug/l
 RT: 6.043 min Scan# 813
 Delta R.T. 0.006 min
 Lab File: VX032869.D
 Acq: 16 Nov 2022 15:38

Tgt Ion: 78 Resp: 1383

Ion	Ratio	Lower	Upper
78	100		
77	23.8	19.0	28.4

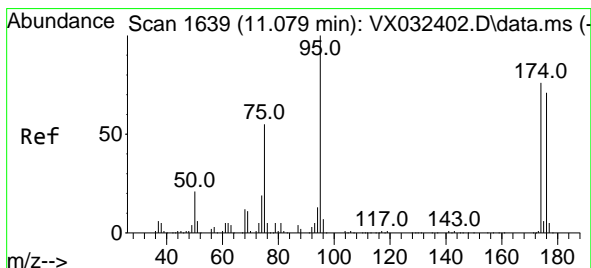
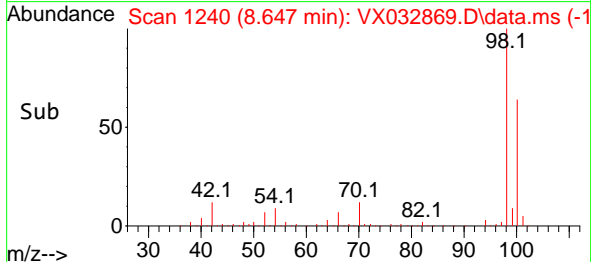
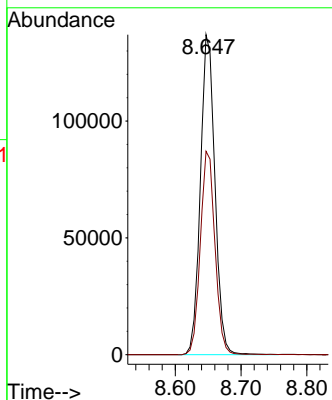
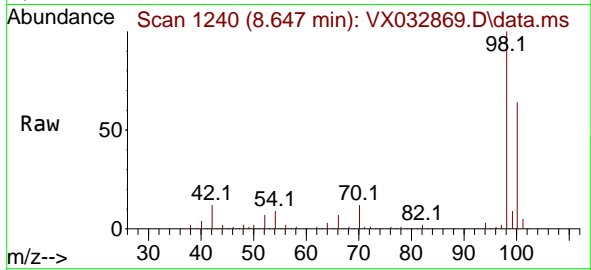




#50
 Toluene-d8
 Concen: 50.315 ug/l
 RT: 8.647 min Scan# 11
 Delta R.T. -0.006 min
 Lab File: VX032869.D
 Acq: 16 Nov 2022 15:38

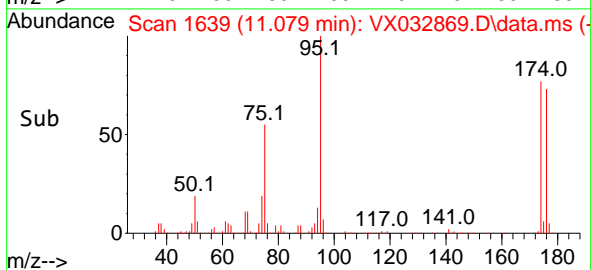
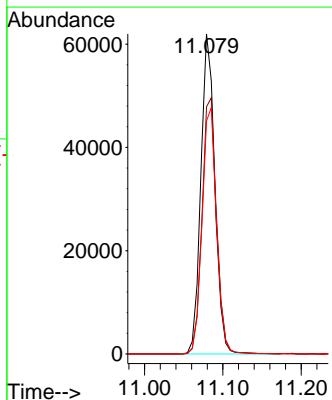
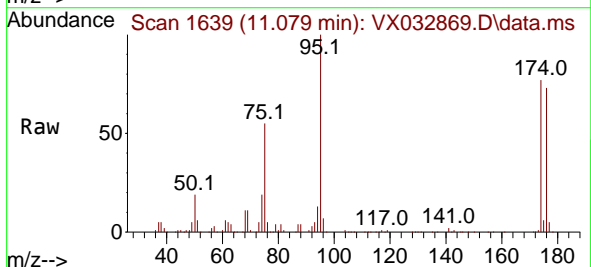
Instrument :
 MSVOA_X
 ClientSampleId :
 MW-33

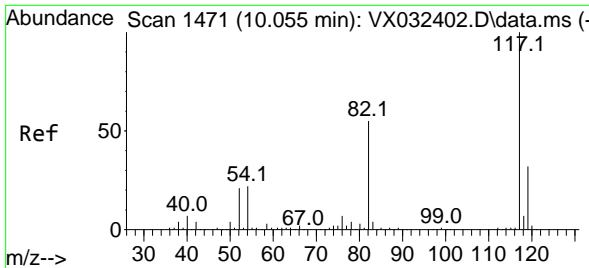
Tgt Ion: 98 Resp: 210526
 Ion Ratio Lower Upper
 98 100
 100 64.0 50.9 76.3



#62
 4-Bromofluorobenzene
 Concen: 46.926 ug/l
 RT: 11.079 min Scan# 1639
 Delta R.T. -0.000 min
 Lab File: VX032869.D
 Acq: 16 Nov 2022 15:38

Tgt Ion: 95 Resp: 76697
 Ion Ratio Lower Upper
 95 100
 174 83.3 0.0 164.0
 176 79.7 0.0 154.4



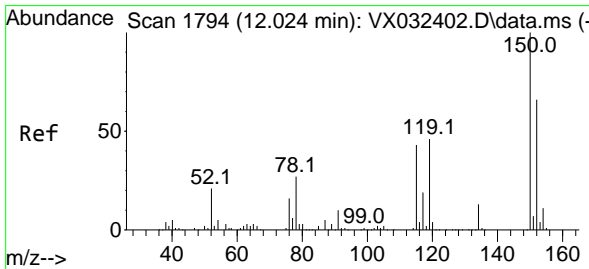
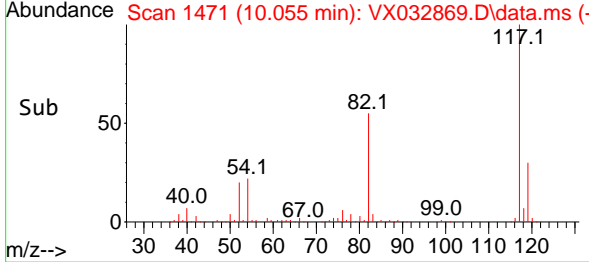
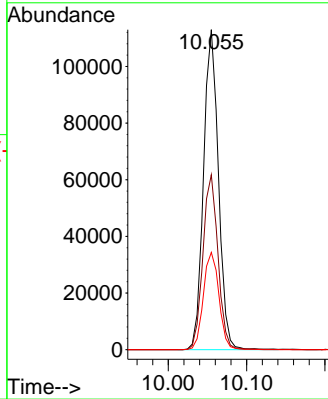
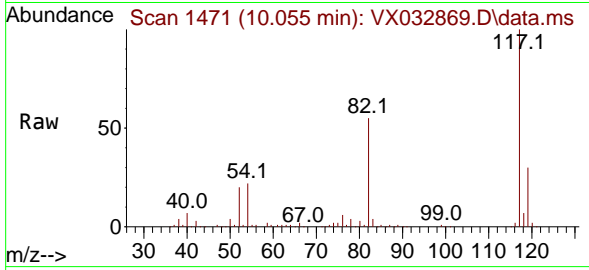


#63
 Chlorobenzene-d5
 Concen: 50.000 ug/l
 RT: 10.055 min Scan# 1471
 Delta R.T. -0.000 min
 Lab File: VX032869.D
 Acq: 16 Nov 2022 15:38

Instrument : MSVOA_X
 ClientSampleId : MW-33

Tgt Ion:117 Resp: 148996

Ion	Ratio	Lower	Upper
117	100		
82	54.7	44.3	66.5
119	30.4	25.7	38.5



#72
 1,4-Dichlorobenzene-d4
 Concen: 50.000 ug/l
 RT: 12.024 min Scan# 1794
 Delta R.T. -0.000 min
 Lab File: VX032869.D
 Acq: 16 Nov 2022 15:38

Tgt Ion:152 Resp: 65456

Ion	Ratio	Lower	Upper
152	100		
115	59.7	44.0	132.0
150	153.6	0.0	351.8

