

Data Path : Z:\voasrv\HPCHEM1\MSVOA_X\Data\VX111623\
 Data File : VX038847.D
 Acq On : 16 Nov 2023 18:58
 Operator : JC/MD
 Sample : 05421-23RE
 Misc : 5.0mL/MSVOA_X/WATER
 ALS Vial : 21 Sample Multiplier: 1

Instrument :
 MSVOA_X
 ClientSampleId :

Quant Time: Nov 16 23:06:26 2023
 Quant Method : Z:\voasrv\HPCHEM1\MSVOA_X\Method\82X111623W.M
 Quant Title : SW846 8260
 QLast Update : Thu Nov 16 22:59:22 2023
 Response via : Initial Calibration

Compound	R.T.	QIon	Response	Conc	Units	Dev(Min)

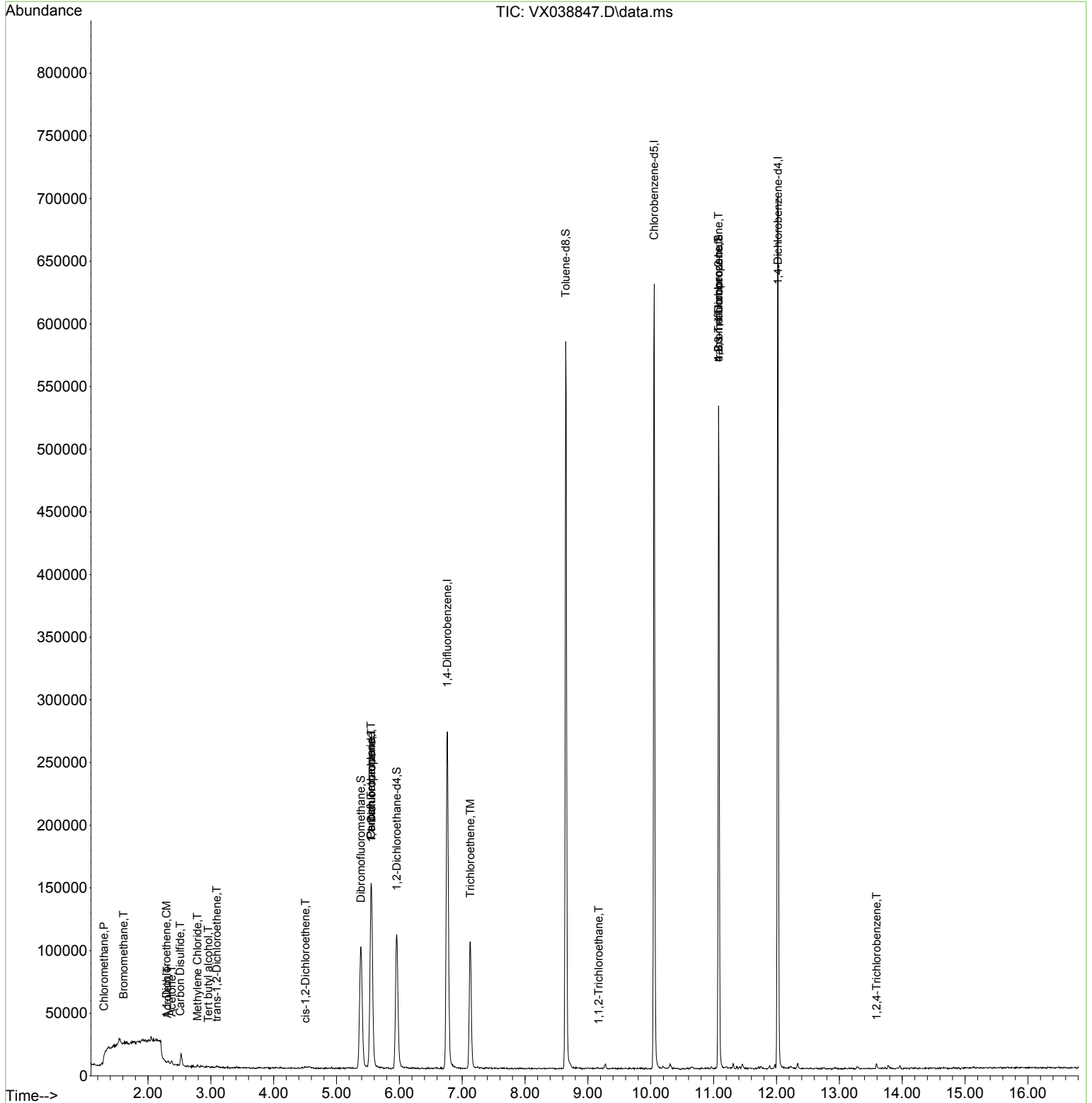
Internal Standards						
1) Pentafluorobenzene	5.550	168	135250	50.000	ug/l	0.00
34) 1,4-Difluorobenzene	6.763	114	278035	50.000	ug/l	0.00
63) Chlorobenzene-d5	10.055	117	284246	50.000	ug/l	0.00
72) 1,4-Dichlorobenzene-d4	12.024	152	142411	50.000	ug/l	0.00
System Monitoring Compounds						
33) 1,2-Dichloroethane-d4	5.958	65	100264	46.006	ug/l	0.00
Spiked Amount	50.000	Range 78 - 117	Recovery	=	92.020%	
35) Dibromofluoromethane	5.385	113	88403	44.025	ug/l	0.00
Spiked Amount	50.000	Range 75 - 124	Recovery	=	88.040%	
50) Toluene-d8	8.647	98	351868	45.799	ug/l	0.00
Spiked Amount	50.000	Range 92 - 112	Recovery	=	91.600%#	
62) 4-Bromofluorobenzene	11.079	95	150192	48.835	ug/l	0.00
Spiked Amount	50.000	Range 83 - 123	Recovery	=	97.680%	
Target Compounds						
						Qvalue
3) Chloromethane	1.301	50	503	0.244	ug/l	90
5) Bromomethane	1.612	94	264	0.322	ug/l #	9
11) Tert butyl alcohol	2.959	59	323	0.533	ug/l #	53
12) 1,1-Dichloroethene	2.294	96	338	0.201	ug/l #	1
13) Acrolein	2.307	56	158	0.493	ug/l #	14
16) Acetone	2.380	43	2584	2.227	ug/l	90
17) Carbon Disulfide	2.514	76	2123	0.407	ug/l	96
20) Methylene Chloride	2.788	84	1145	0.547	ug/l #	81
21) trans-1,2-Dichloroethene	3.093	96	818	0.440	ug/l #	53
27) cis-1,2-Dichloroethene	4.507	96	1380	0.637	ug/l	57
36) 1,1-Dichloropropene	5.556	75	12325	4.283	ug/l #	52
38) Carbon Tetrachloride	5.550	117	15140	5.692	ug/l #	15
44) Trichloroethene	7.129	130	39085	18.864	ug/l	90
55) 1,1,2-Trichloroethane	9.171	97	781	0.354	ug/l #	32
76) 1,2,3-Trichloropropane	11.079	75	75560	21.266	ug/l #	39
81) trans-1,4-Dichloro-2-b...	11.079	75	75560	47.170	ug/l #	5
93) 1,2,4-Trichlorobenzene	13.591	180	868	0.280	ug/l	89

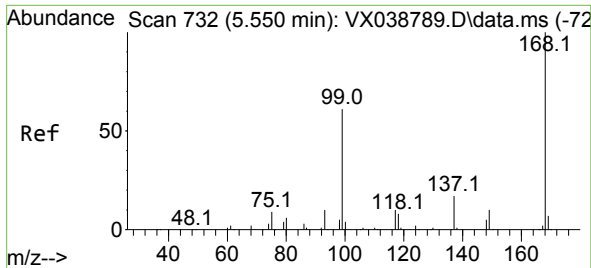
(#) = qualifier out of range (m) = manual integration (+) = signals summed

Data Path : Z:\voasrv\HPCHEM1\MSVOA_X\Data\VX111623\
 Data File : VX038847.D
 Acq On : 16 Nov 2023 18:58
 Operator : JC/MD
 Sample : 05421-23RE
 Misc : 5.0mL/MSVOA_X/WATER
 ALS Vial : 21 Sample Multiplier: 1

Instrument :
 MSVOA_X
 ClientSampleId :

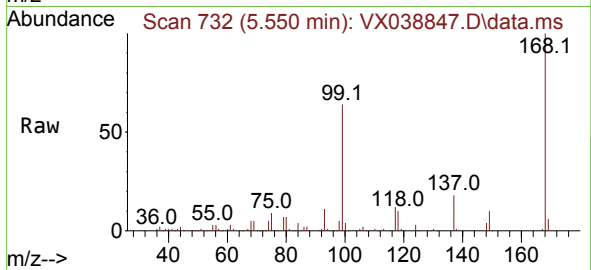
Quant Time: Nov 16 23:06:26 2023
 Quant Method : Z:\voasrv\HPCHEM1\MSVOA_X\Method\82X111623W.M
 Quant Title : SW846 8260
 QLast Update : Thu Nov 16 22:59:22 2023
 Response via : Initial Calibration



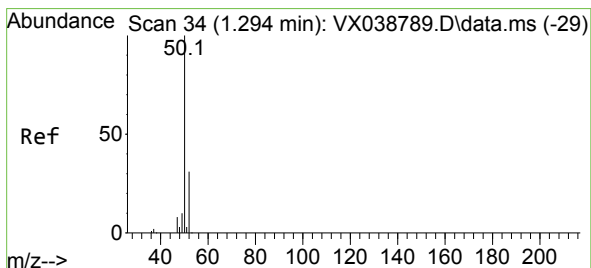
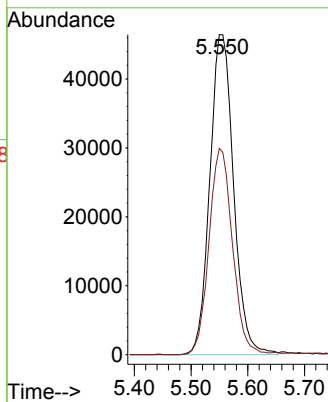
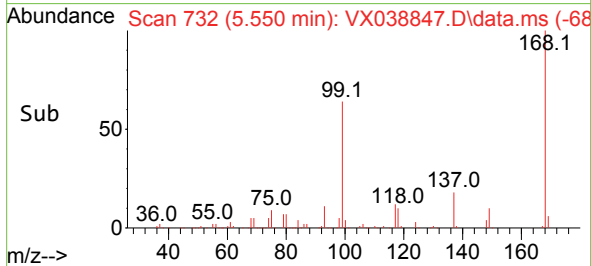


#1
 Pentafluorobenzene
 Concen: 50.000 ug/l
 RT: 5.550 min Scan# 71
 Delta R.T. -0.000 min
 Lab File: VX038847.D
 Acq: 16 Nov 2023 18:58

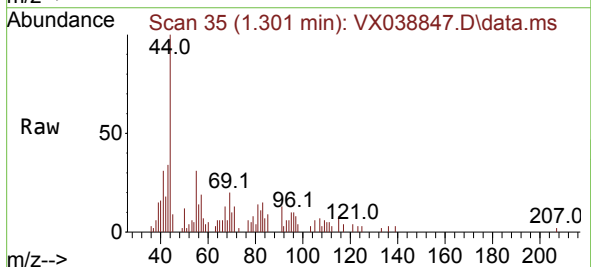
Instrument : MSVOA_X
 ClientSampleId :



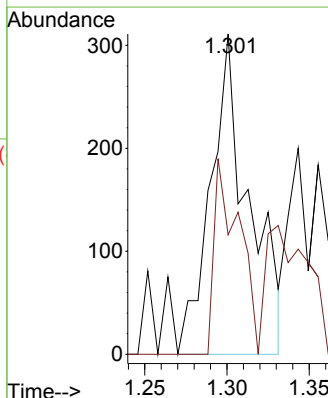
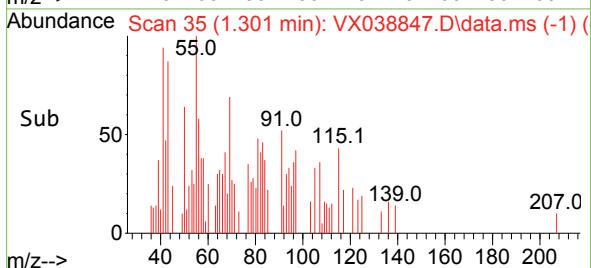
Tgt Ion:168 Resp: 135250
 Ion Ratio Lower Upper
 168 100
 99 64.5 56.6 85.0

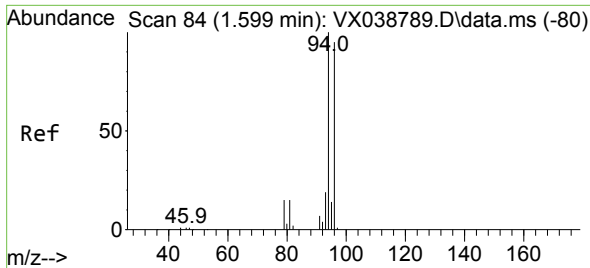


#3
 Chloromethane
 Concen: 0.244 ug/l
 RT: 1.301 min Scan# 35
 Delta R.T. 0.007 min
 Lab File: VX038847.D
 Acq: 16 Nov 2023 18:58



Tgt Ion: 50 Resp: 503
 Ion Ratio Lower Upper
 50 100
 52 37.3 25.5 38.3

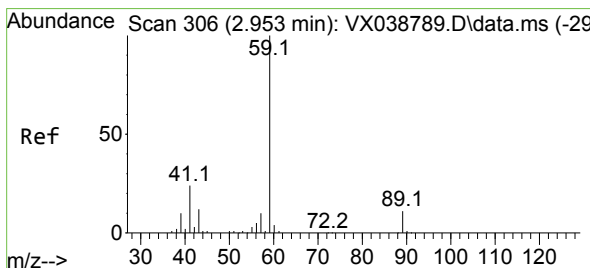
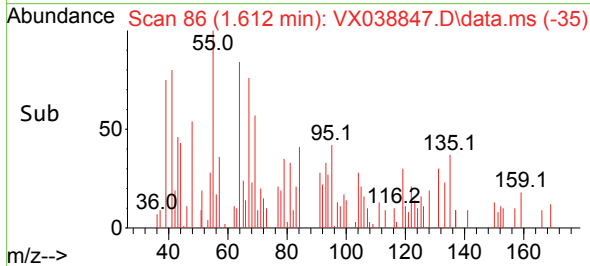
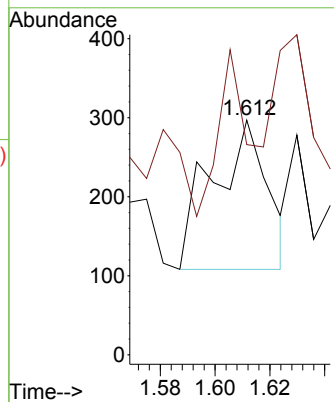
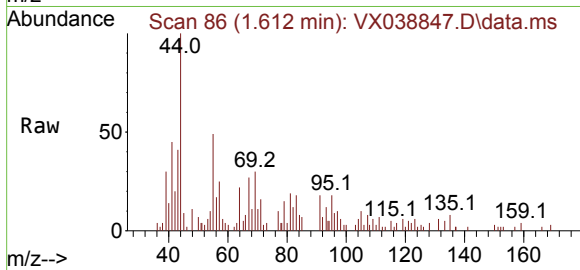




#5
 Bromomethane
 Concen: 0.322 ug/l
 RT: 1.612 min Scan# 80
 Delta R.T. 0.013 min
 Lab File: VX038847.D
 Acq: 16 Nov 2023 18:58

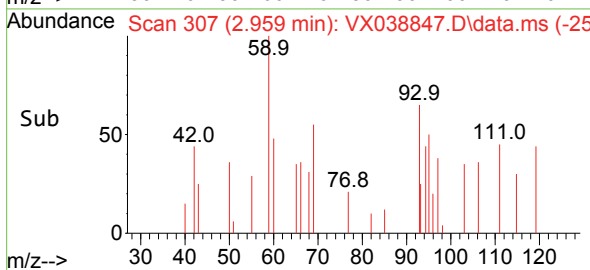
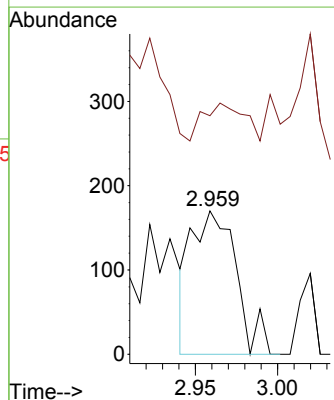
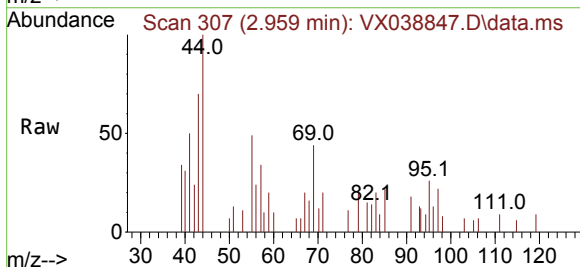
Instrument : MSVOA_X
 ClientSampleId :

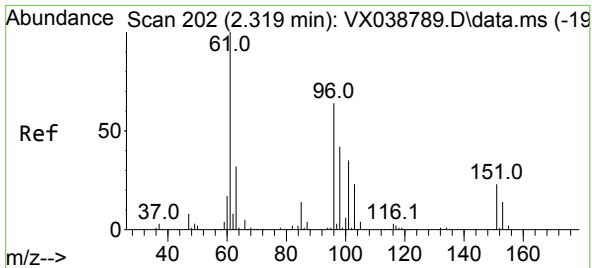
Tgt Ion: 94 Resp: 264
 Ion Ratio Lower Upper
 94 100
 96 5.3 74.6 111.8#



#11
 Tert butyl alcohol
 Concen: 0.533 ug/l
 RT: 2.959 min Scan# 307
 Delta R.T. 0.006 min
 Lab File: VX038847.D
 Acq: 16 Nov 2023 18:58

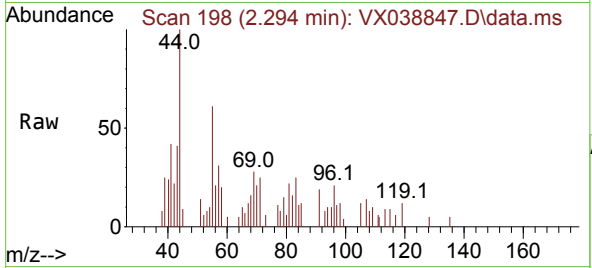
Tgt Ion: 59 Resp: 323
 Ion Ratio Lower Upper
 59 100
 57 23.8 6.0 9.0#



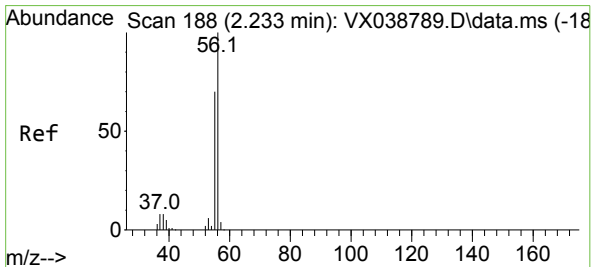
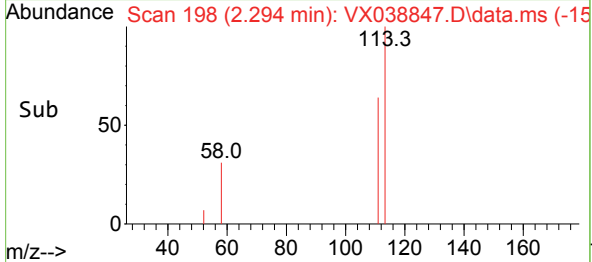
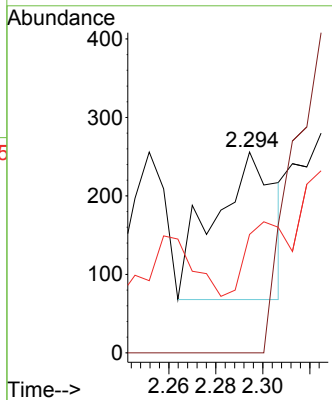


#12
 1,1-Dichloroethene
 Concen: 0.201 ug/l
 RT: 2.294 min Scan# 11
 Delta R.T. -0.024 min
 Lab File: VX038847.D
 Acq: 16 Nov 2023 18:58

Instrument : MSVOA_X
 ClientSampleId :

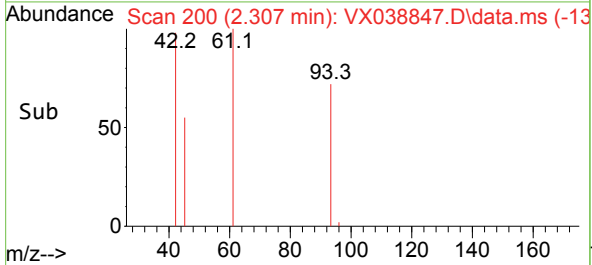
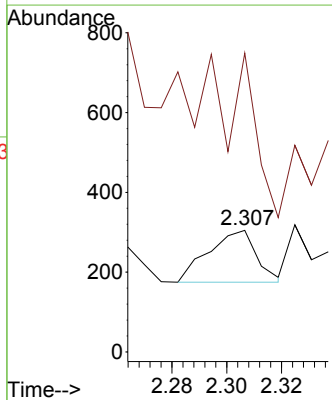
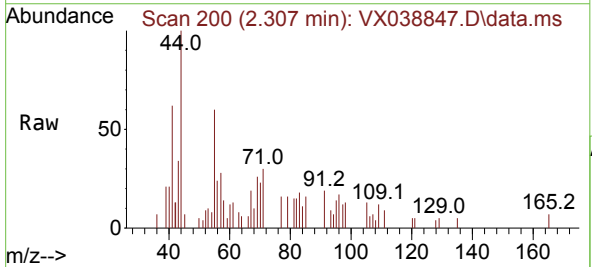


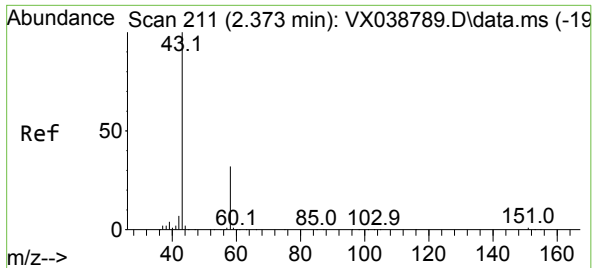
Tgt Ion: 96 Resp: 338
 Ion Ratio Lower Upper
 96 100
 61 0.0 144.6 216.8#
 98 3.2 50.4 75.6#



#13
 Acrolein
 Concen: 0.493 ug/l
 RT: 2.307 min Scan# 200
 Delta R.T. 0.073 min
 Lab File: VX038847.D
 Acq: 16 Nov 2023 18:58

Tgt Ion: 56 Resp: 158
 Ion Ratio Lower Upper
 56 100
 55 0.0 57.1 85.7#

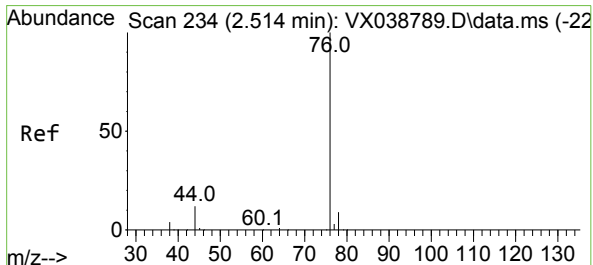
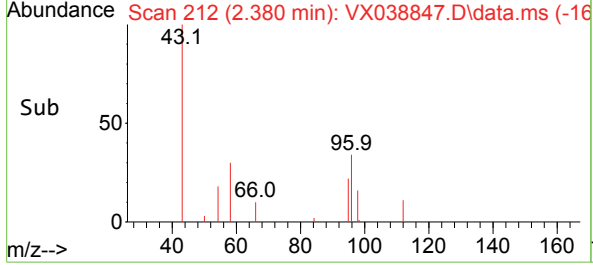
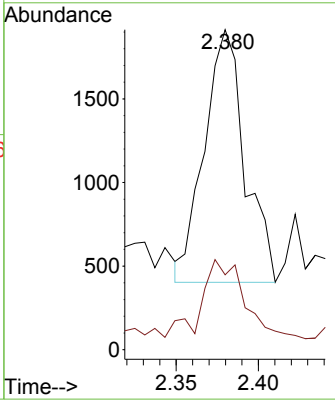
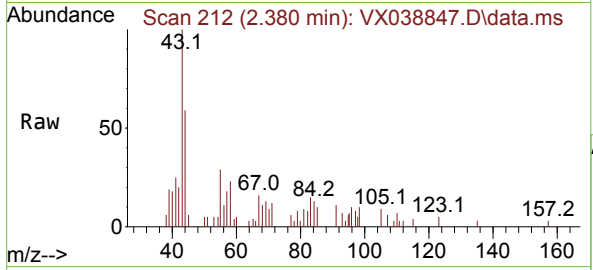




#16
 Acetone
 Concen: 2.227 ug/l
 RT: 2.380 min Scan# 211
 Delta R.T. 0.006 min
 Lab File: VX038847.D
 Acq: 16 Nov 2023 18:58

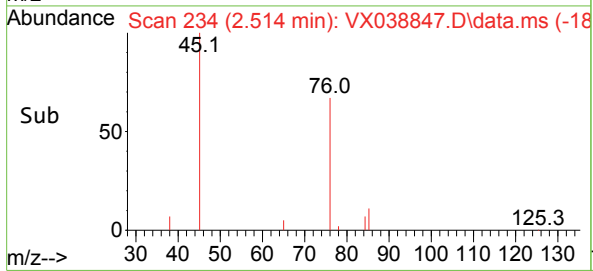
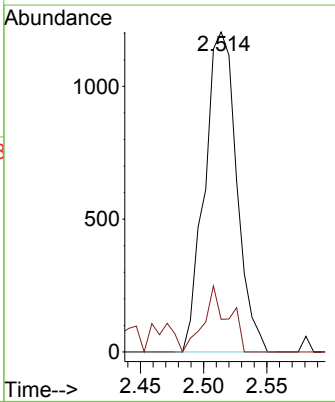
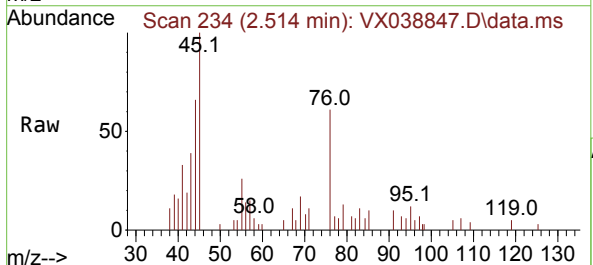
Instrument : MSVOA_X
 ClientSampleId :

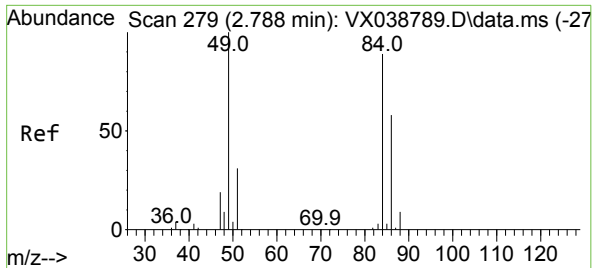
Tgt Ion: 43 Resp: 2584
 Ion Ratio Lower Upper
 43 100
 58 22.3 21.9 32.9



#17
 Carbon Disulfide
 Concen: 0.407 ug/l
 RT: 2.514 min Scan# 234
 Delta R.T. 0.000 min
 Lab File: VX038847.D
 Acq: 16 Nov 2023 18:58

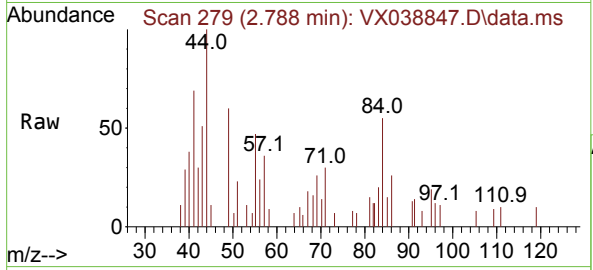
Tgt Ion: 76 Resp: 2123
 Ion Ratio Lower Upper
 76 100
 78 10.2 7.0 10.6





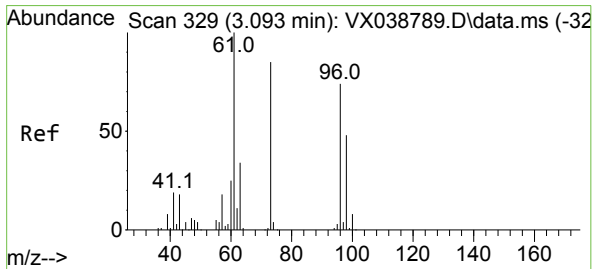
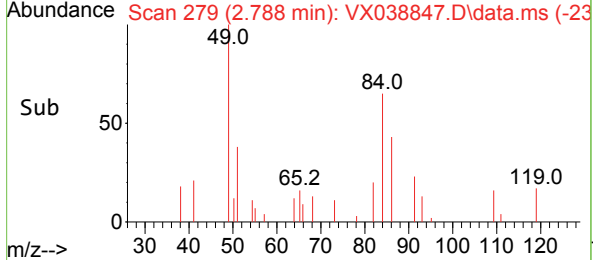
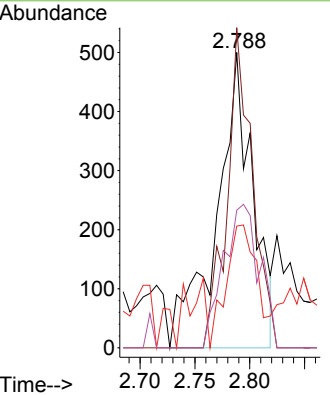
#20
 Methylene Chloride
 Concen: 0.547 ug/l
 RT: 2.788 min Scan# 211
 Delta R.T. 0.000 min
 Lab File: VX038847.D
 Acq: 16 Nov 2023 18:58

Instrument : MSVOA_X
 ClientSampleId :



Tgt Ion: 84 Resp: 1145

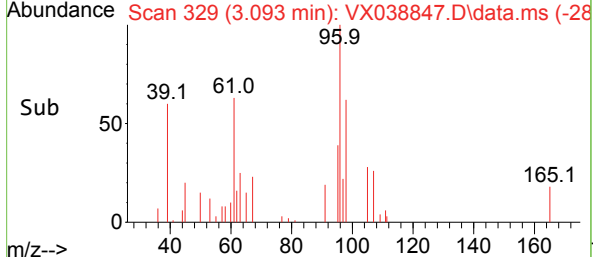
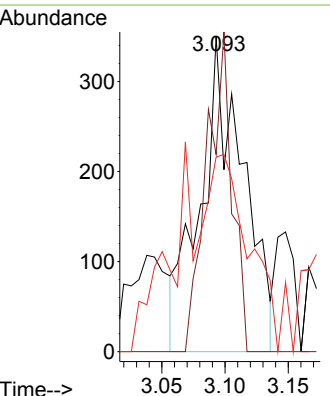
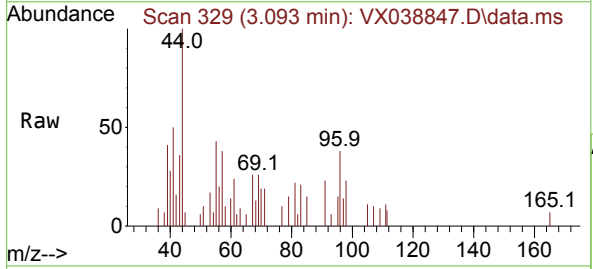
Ion	Ratio	Lower	Upper
84	100		
49	108.4	103.6	155.4
51	30.4	33.8	50.6#
86	46.6	49.4	74.0#

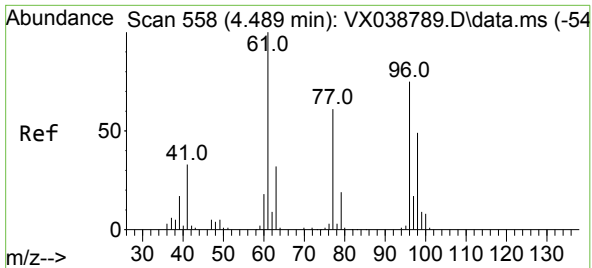


#21
 trans-1,2-Dichloroethene
 Concen: 0.440 ug/l
 RT: 3.093 min Scan# 329
 Delta R.T. 0.000 min
 Lab File: VX038847.D
 Acq: 16 Nov 2023 18:58

Tgt Ion: 96 Resp: 818

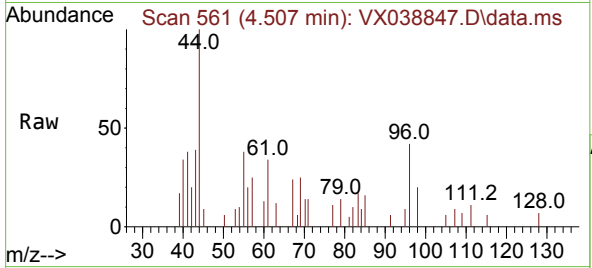
Ion	Ratio	Lower	Upper
96	100		
61	74.5	119.2	178.8#
98	46.6	48.7	73.1#



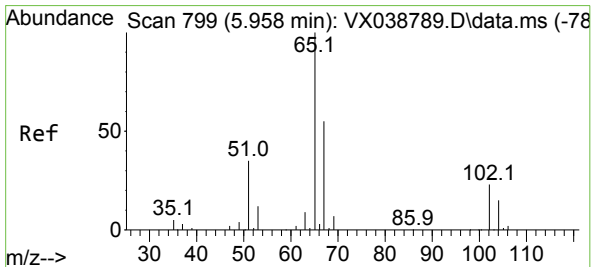
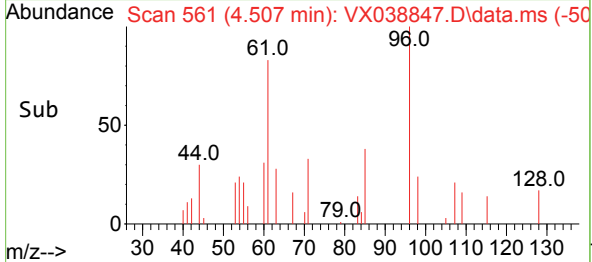
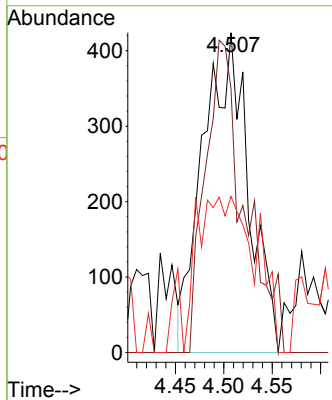


#27
 cis-1,2-Dichloroethene
 Concen: 0.637 ug/l
 RT: 4.507 min Scan# 501
 Delta R.T. 0.018 min
 Lab File: VX038847.D
 Acq: 16 Nov 2023 18:58

Instrument :
 MSVOA_X
 ClientSampleId :

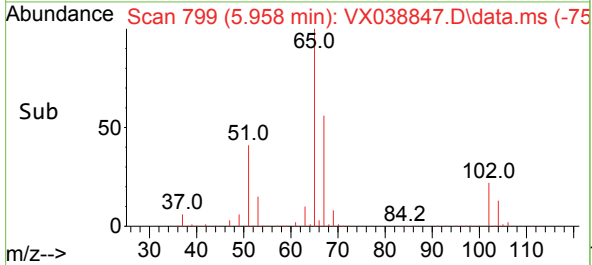
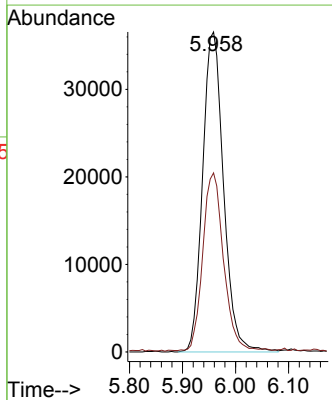
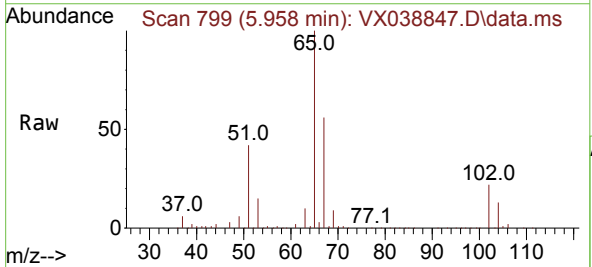


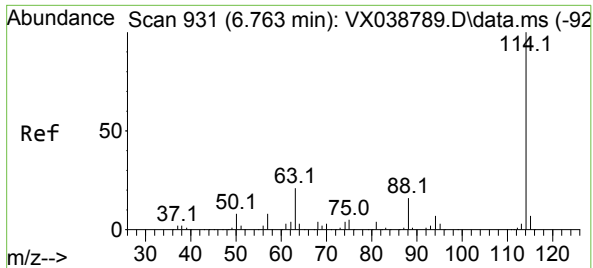
Tgt Ion: 96 Resp: 1380
 Ion Ratio Lower Upper
 96 100
 61 84.3 0.0 312.2
 98 52.8 0.0 129.0



#33
 1,2-Dichloroethane-d4
 Concen: 46.006 ug/l
 RT: 5.958 min Scan# 799
 Delta R.T. 0.000 min
 Lab File: VX038847.D
 Acq: 16 Nov 2023 18:58

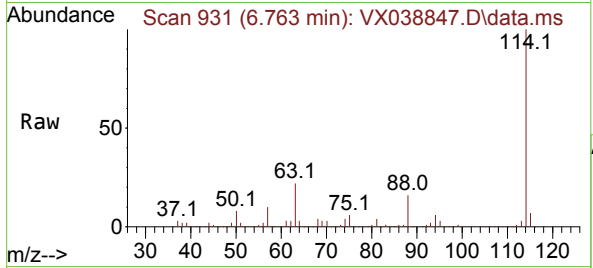
Tgt Ion: 65 Resp: 100264
 Ion Ratio Lower Upper
 65 100
 67 54.6 0.0 100.2



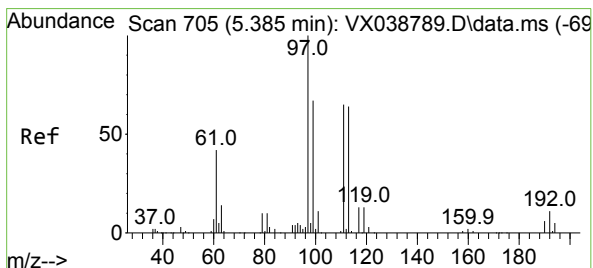
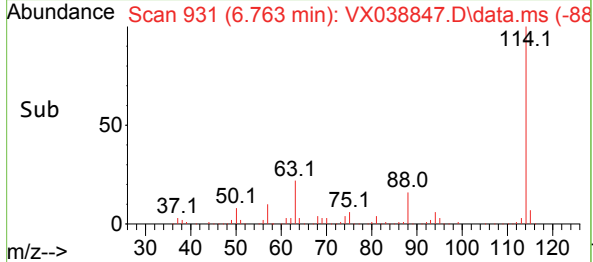
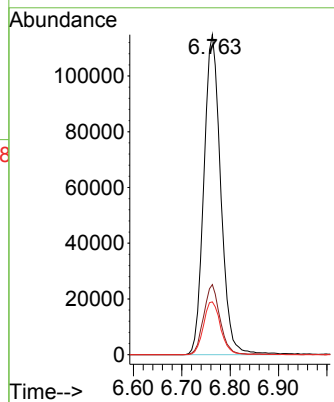


#34
 1,4-Difluorobenzene
 Concen: 50.000 ug/l
 RT: 6.763 min Scan# 91
 Delta R.T. 0.000 min
 Lab File: VX038847.D
 Acq: 16 Nov 2023 18:58

Instrument :
 MSVOA_X
 ClientSampleId :

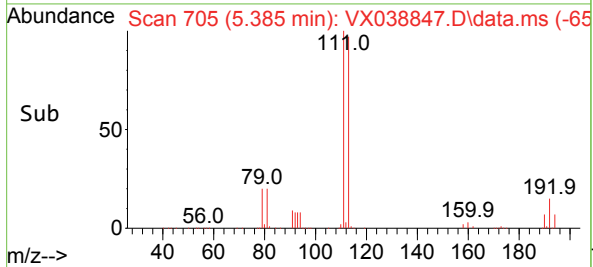
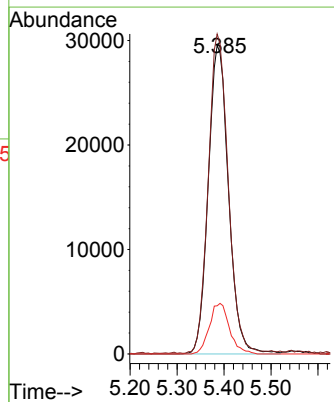
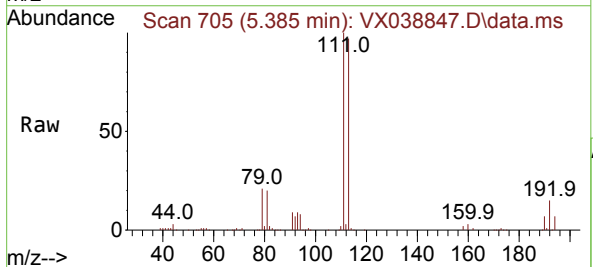


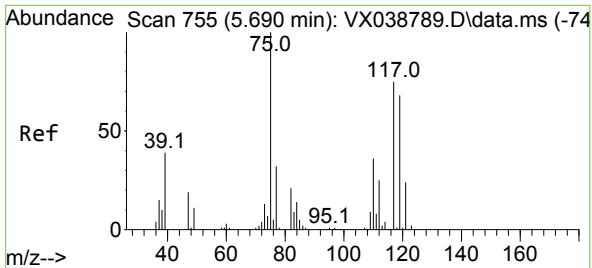
Tgt Ion:114 Resp: 278035
 Ion Ratio Lower Upper
 114 100
 63 21.9 0.0 45.0
 88 16.5 0.0 36.6



#35
 Dibromofluoromethane
 Concen: 44.025 ug/l
 RT: 5.385 min Scan# 705
 Delta R.T. 0.000 min
 Lab File: VX038847.D
 Acq: 16 Nov 2023 18:58

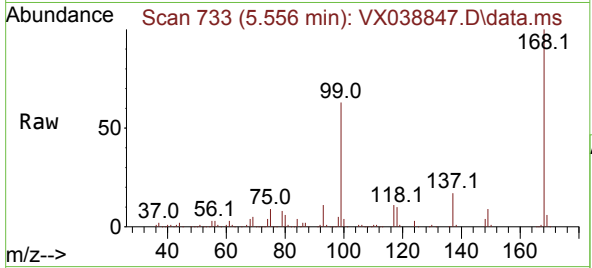
Tgt Ion:113 Resp: 88403
 Ion Ratio Lower Upper
 113 100
 111 101.9 82.9 124.3
 192 16.3 13.3 19.9



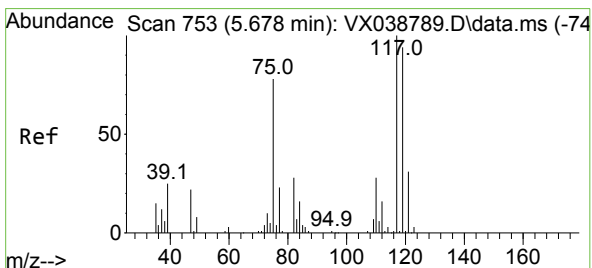
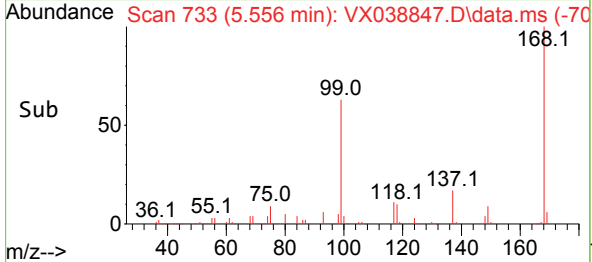
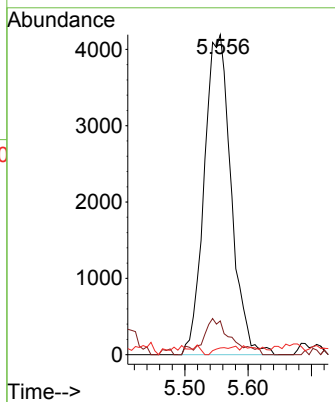


#36
 1,1-Dichloropropene
 Concen: 4.283 ug/l
 RT: 5.556 min Scan# 711
 Delta R.T. -0.134 min
 Lab File: VX038847.D
 Acq: 16 Nov 2023 18:58

Instrument : MSVOA_X
 ClientSampled :

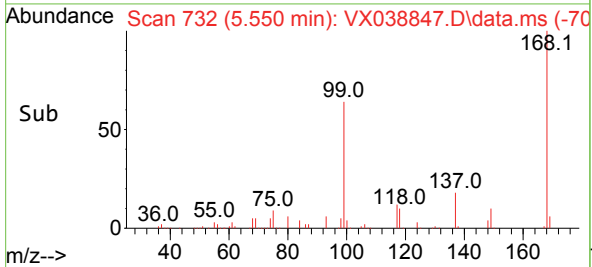
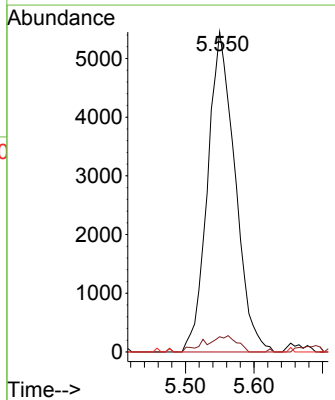
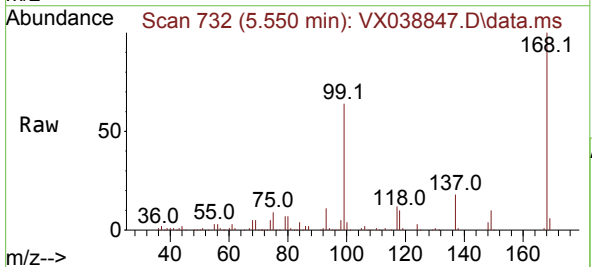


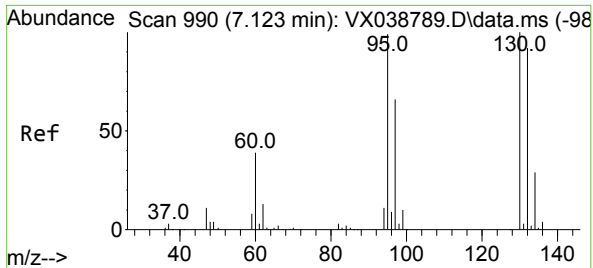
Tgt Ion: 75 Resp: 12325
 Ion Ratio Lower Upper
 75 100
 110 11.0 17.0 50.9#
 77 0.0 24.7 37.1#



#38
 Carbon Tetrachloride
 Concen: 5.692 ug/l
 RT: 5.550 min Scan# 732
 Delta R.T. -0.128 min
 Lab File: VX038847.D
 Acq: 16 Nov 2023 18:58

Tgt Ion: 117 Resp: 15140
 Ion Ratio Lower Upper
 117 100
 119 4.7 78.2 117.2#
 121 0.0 24.4 36.6#

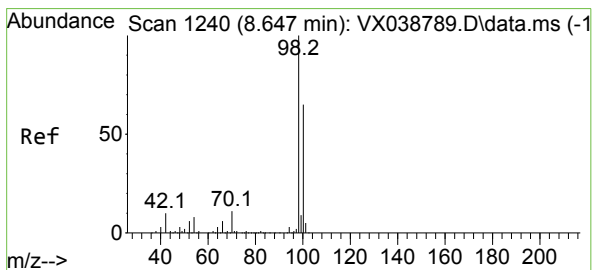
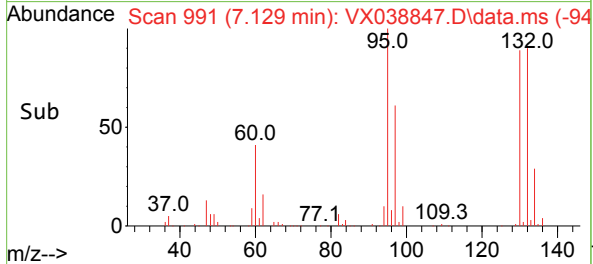
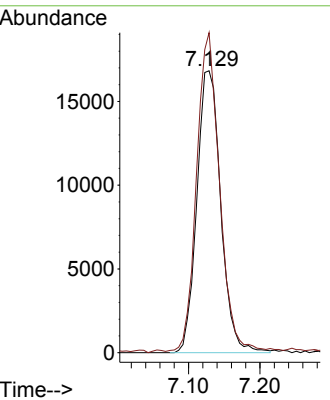
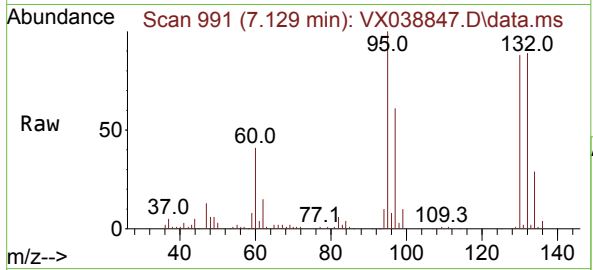




#44
 Trichloroethene
 Concen: 18.864 ug/l
 RT: 7.129 min Scan# 991
 Delta R.T. 0.006 min
 Lab File: VX038847.D
 Acq: 16 Nov 2023 18:58

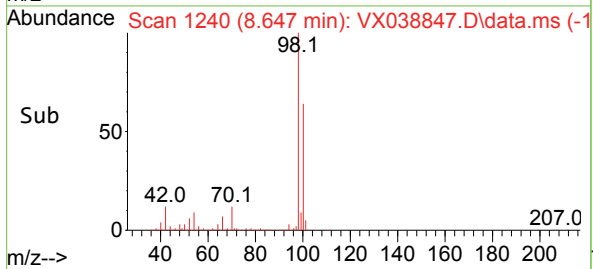
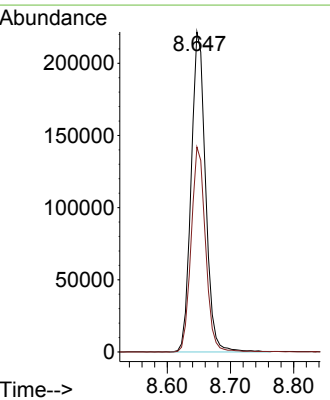
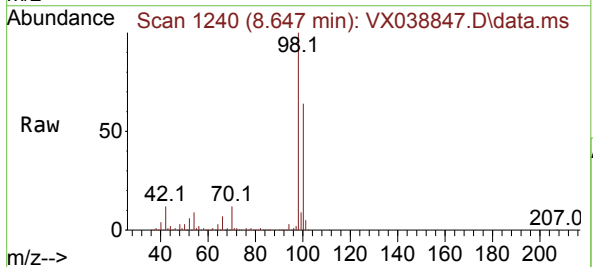
Instrument : MSVOA_X
 ClientSampleId :

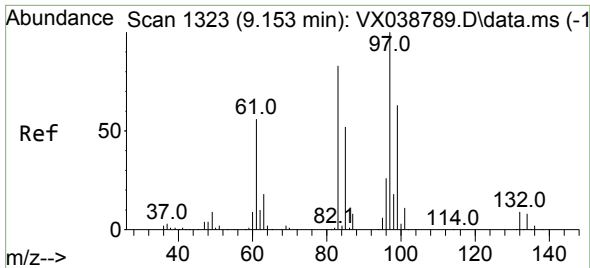
Tgt Ion:130 Resp: 39085
 Ion Ratio Lower Upper
 130 100
 95 112.7 0.0 204.4



#50
 Toluene-d8
 Concen: 45.799 ug/l
 RT: 8.647 min Scan# 1240
 Delta R.T. 0.000 min
 Lab File: VX038847.D
 Acq: 16 Nov 2023 18:58

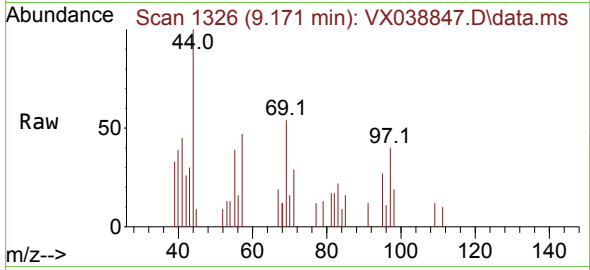
Tgt Ion: 98 Resp: 351868
 Ion Ratio Lower Upper
 98 100
 100 64.0 53.1 79.7





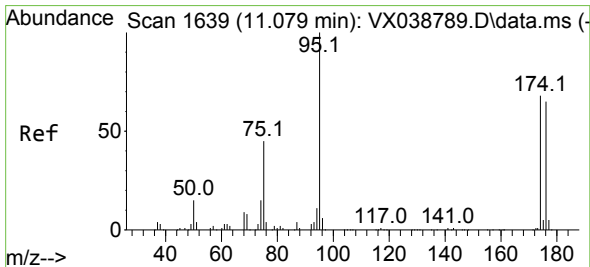
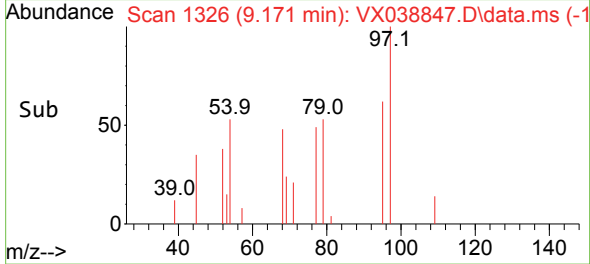
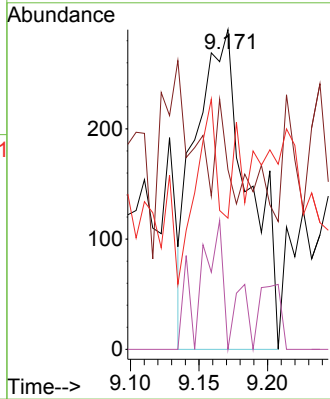
#55
 1,1,2-Trichloroethane
 Concen: 0.354 ug/l
 RT: 9.171 min Scan# 11
 Delta R.T. 0.018 min
 Lab File: VX038847.D
 Acq: 16 Nov 2023 18:58

Instrument :
 MSVOA_X
 ClientSampleId :



Tgt Ion: 97 Resp: 781

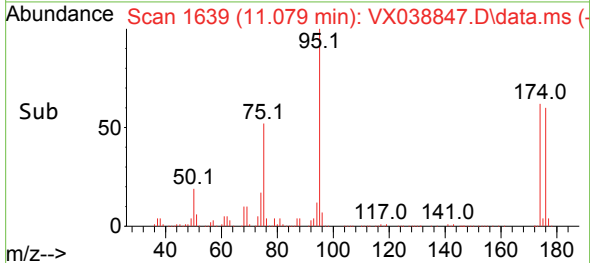
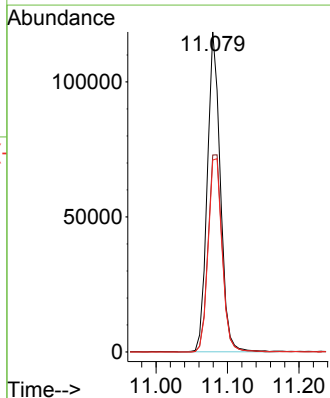
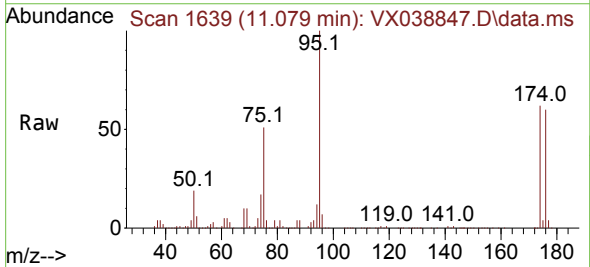
Ion	Ratio	Lower	Upper
97	100		
83	16.2	65.8	98.8#
85	20.7	41.6	62.4#
99	0.0	47.8	71.8#

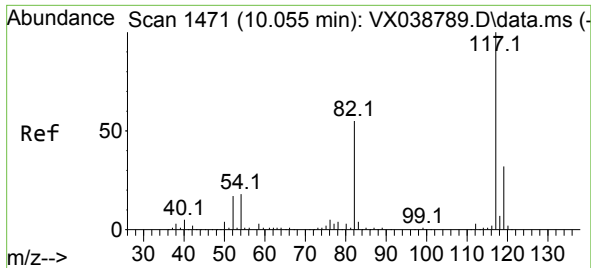


#62
 4-Bromofluorobenzene
 Concen: 48.835 ug/l
 RT: 11.079 min Scan# 1639
 Delta R.T. 0.000 min
 Lab File: VX038847.D
 Acq: 16 Nov 2023 18:58

Tgt Ion: 95 Resp: 150192

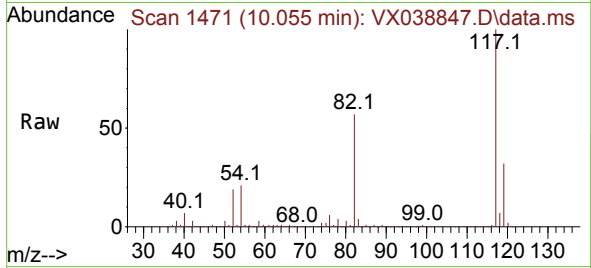
Ion	Ratio	Lower	Upper
95	100		
174	66.7	0.0	135.6
176	64.7	0.0	131.0



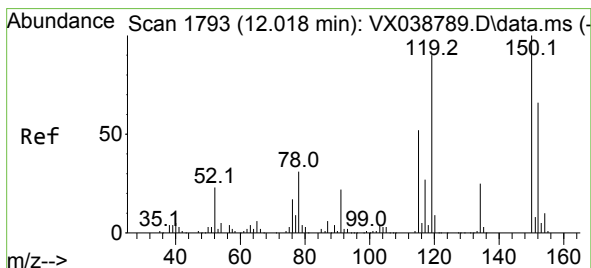
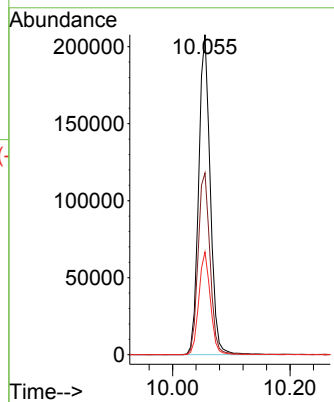
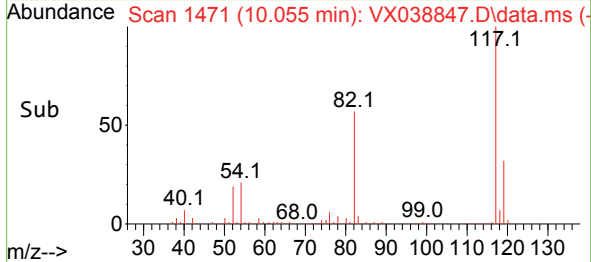


#63
 Chlorobenzene-d5
 Concen: 50.000 ug/l
 RT: 10.055 min Scan# 1471
 Delta R.T. 0.000 min
 Lab File: VX038847.D
 Acq: 16 Nov 2023 18:58

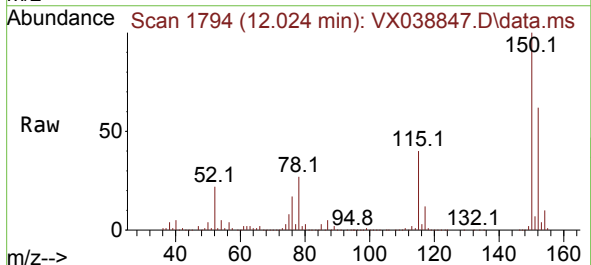
Instrument : MSVOA_X
 ClientSampleId :



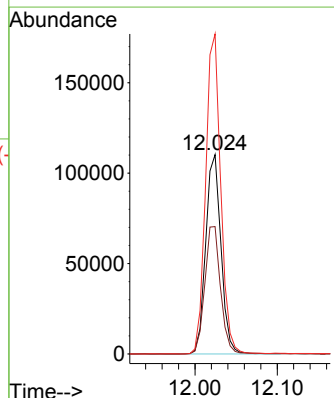
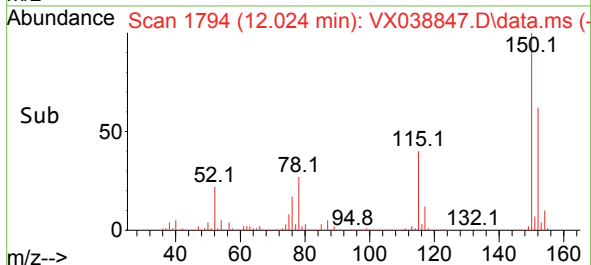
Tgt Ion:117 Resp: 284246
 Ion Ratio Lower Upper
 117 100
 82 56.8 46.2 69.4
 119 32.1 25.5 38.3

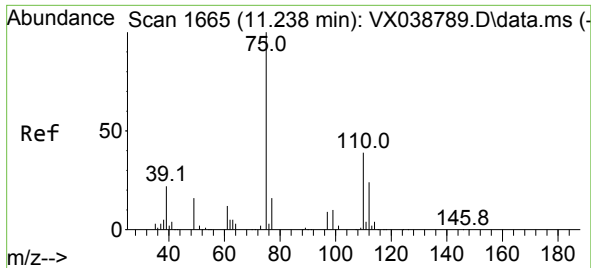


#72
 1,4-Dichlorobenzene-d4
 Concen: 50.000 ug/l
 RT: 12.024 min Scan# 1794
 Delta R.T. 0.006 min
 Lab File: VX038847.D
 Acq: 16 Nov 2023 18:58



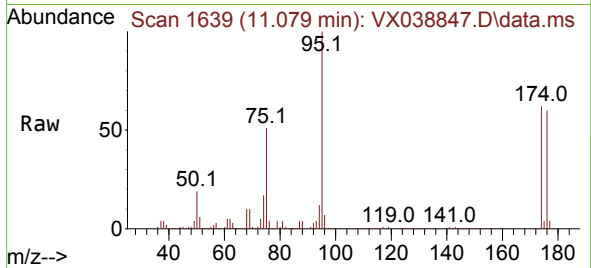
Tgt Ion:152 Resp: 142411
 Ion Ratio Lower Upper
 152 100
 115 65.9 43.3 129.9
 150 157.9 0.0 345.0



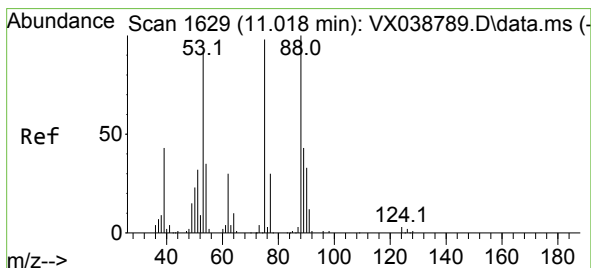
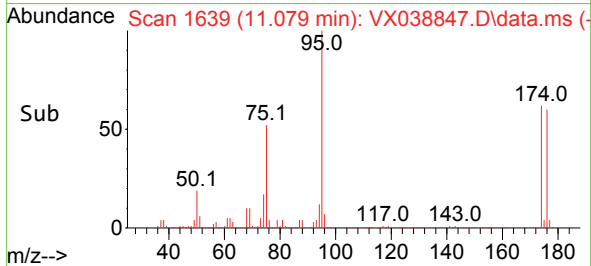
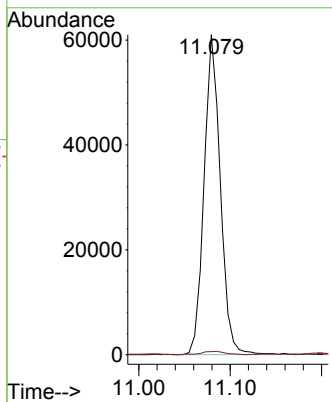


#76
 1,2,3-Trichloropropane
 Concen: 21.266 ug/l
 RT: 11.079 min Scan# 1639
 Delta R.T. -0.158 min
 Lab File: VX038847.D
 Acq: 16 Nov 2023 18:58

Instrument : MSVOA_X
 ClientSampleId :

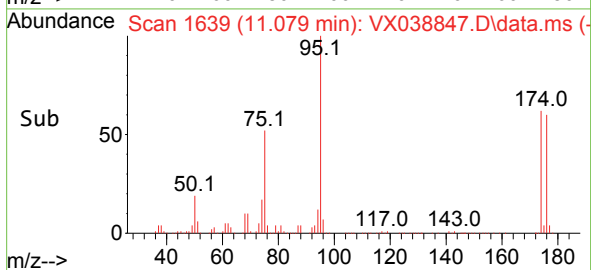
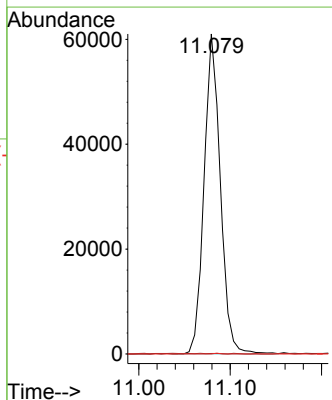
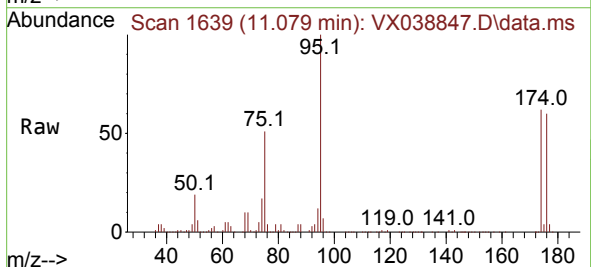


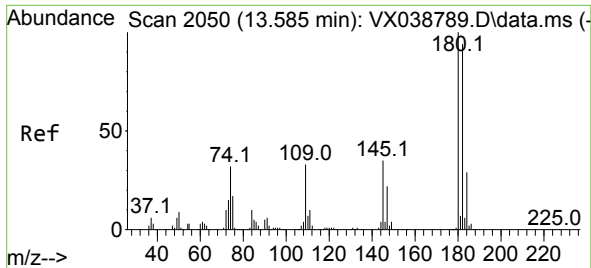
Tgt Ion: 75 Resp: 75560
 Ion Ratio Lower Upper
 75 100
 77 1.6 19.1 57.5#



#81
 trans-1,4-Dichloro-2-butene
 Concen: 47.170 ug/l
 RT: 11.079 min Scan# 1639
 Delta R.T. 0.061 min
 Lab File: VX038847.D
 Acq: 16 Nov 2023 18:58

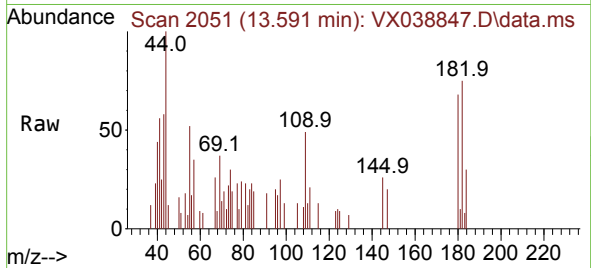
Tgt Ion: 75 Resp: 75560
 Ion Ratio Lower Upper
 75 100
 53 0.0 90.5 135.7#
 89 0.1 36.9 55.3#





#93
 1,2,4-Trichlorobenzene
 Concen: 0.280 ug/l
 RT: 13.591 min Scan# 20
 Delta R.T. 0.006 min
 Lab File: VX038847.D
 Acq: 16 Nov 2023 18:58

Instrument :
 MSVOA_X
 ClientSampleId :



Tgt Ion:180 Resp: 868

Ion	Ratio	Lower	Upper
180	100		
182	85.1	48.3	144.8
145	31.3	18.0	54.0

