

Data Path : Z:\VOASRV\HPCHEM1\MSVOA_X\DATA\VX111718\
 Data File : VX006069.D
 Acq On : 17 Nov 2018 15:32
 Operator : JC/MD
 Sample : J5965-02DL 5X
 Misc : 5.0mL/MSVOA_X/WATER
 ALS Vial : 11 Sample Multiplier: 1

Instrument :
 MSVOA_X
 ClientSampled :
 MW-2DL

Manual Integrations
 APPROVED

MMDadoda
 11/19/2018 9:24:50 AM

Quant Time: Nov 19 09:12:49 2018
 Quant Method : Z:\VOASRV\HPCHEM1\MSVOA_X\METHOD\82X110718W.M
 Quant Title : SW846 8260
 QLast Update : Wed Nov 07 14:40:53 2018
 Response via : Initial Calibration

Internal Standards	R.T.	QIon	Response	Conc	Units	Dev(Min)
1) Pentafluorobenzene	5.67	168	130269	50.00	ug/l	0.00
34) 1,4-Difluorobenzene	6.87	114	176931	50.00	ug/l	0.00
63) Chlorobenzene-d5	10.12	117	154022	50.00	ug/l	0.00
72) 1,4-Dichlorobenzene-d4	12.08	152	97655	50.00	ug/l	0.00

System Monitoring Compounds

33) 1,2-Dichloroethane-d4	6.06	65	77048	51.45	ug/l	0.00
Spiked Amount	50.000		Recovery	=	102.90%	
35) Dibromofluoromethane	5.51	113	60333	50.14	ug/l	0.00
Spiked Amount	50.000		Recovery	=	100.28%	
50) Toluene-d8	8.71	98	206741	51.68	ug/l	0.00
Spiked Amount	50.000		Recovery	=	103.36%	
62) 4-Bromofluorobenzene	11.14	95	71556	49.75	ug/l	0.00
Spiked Amount	50.000		Recovery	=	99.50%	

Target Compounds

						Qvalue
11) Tert butyl alcohol	3.06	59	14038	32.72	ug/l	99
19) Methyl tert-butyl Ether	3.20	73	18973	4.83	ug/l #	30
31) Cyclohexane	5.58	56	10130	4.86	ug/l	91
39) Methylcyclohexane	7.46	83	3537	2.05	ug/l	91
40) Benzene	6.14	78	171811	34.55	ug/l	99
52) Toluene	8.79	92	3447	1.24	ug/l	99
67) Ethyl Benzene	10.25	91	61085	12.35	ug/l	98
68) m/p-Xylenes	10.36	106	1991	1.05	ug/l	83
73) Isopropylbenzene	11.02	105	10888	1.93	ug/l	99
78) n-propylbenzene	11.36	91	25241	3.79	ug/l	98
89) n-Butylbenzene	12.39	91	7895m	1.62	ug/l	
95) Naphthalene	13.83	128	27547	5.01	ug/l	98

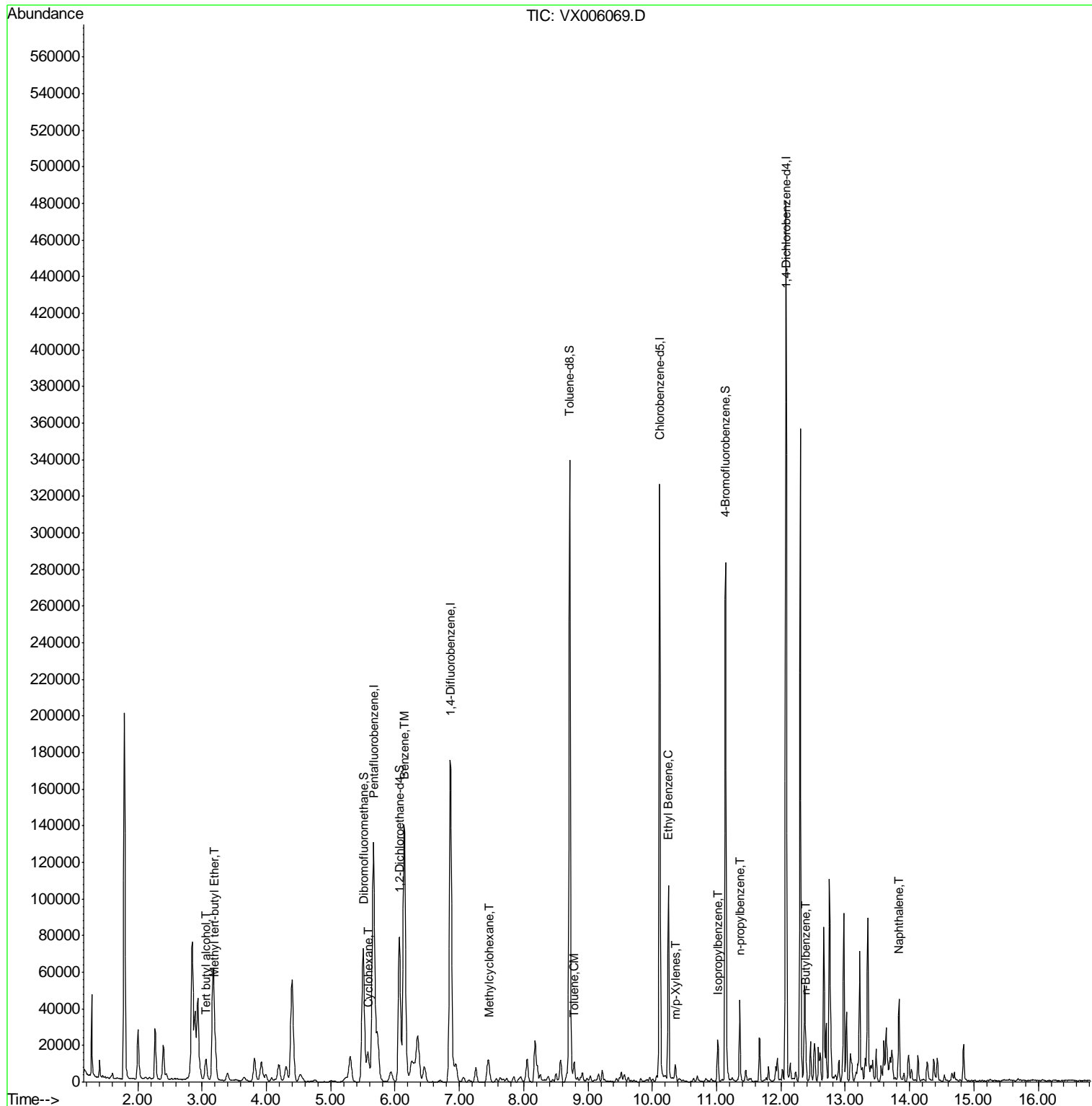
(#) = qualifier out of range (m) = manual integration (+) = signals summed

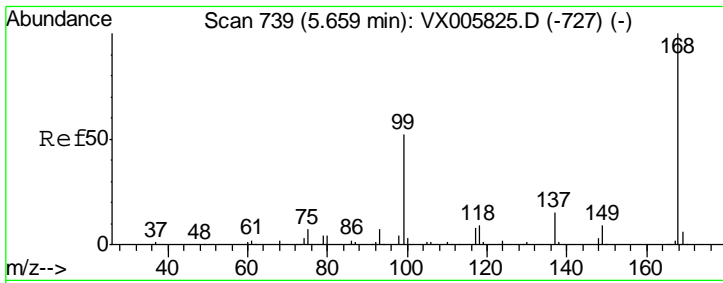
Data Path : Z:\VOASRV\HPCHEM1\MSVOA_X\DATA\VX111718\
 Data File : VX006069.D
 Acq On : 17 Nov 2018 15:32
 Operator : JC/MD
 Sample : J5965-02DL 5X
 Misc : 5.0mL/MSVOA_X/WATER
 ALS Vial : 11 Sample Multiplier: 1

Instrument :
 MSVOA_X
 Client Sampled :
 MW-2DL

Manual Integrations
 APPROVED
 MMDadoda
 11/19/2018 9:24:50 AM

Quant Time: Nov 19 09:12:49 2018
 Quant Method : Z:\VOASRV\HPCHEM1\MSVOA_X\METHOD\82X110718W.M
 Quant Title : SW846 8260
 QLast Update : Wed Nov 07 14:40:53 2018
 Response via : Initial Calibration





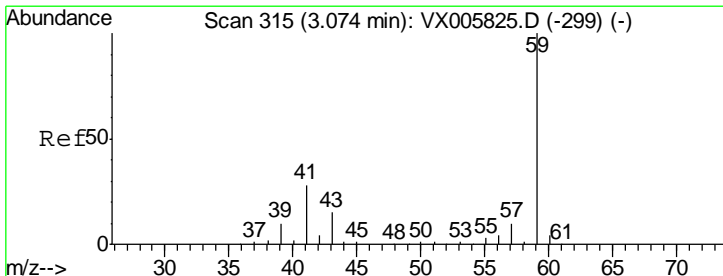
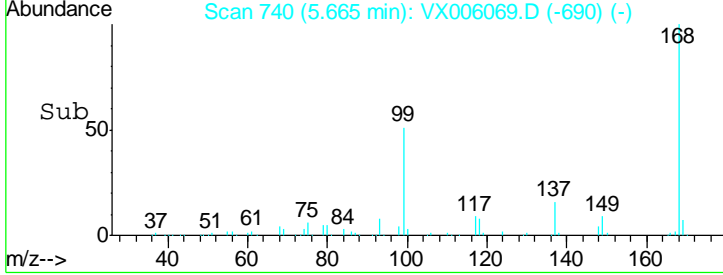
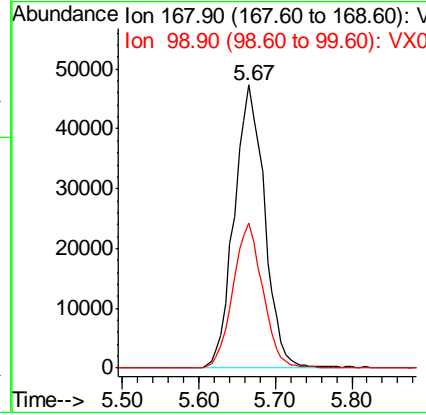
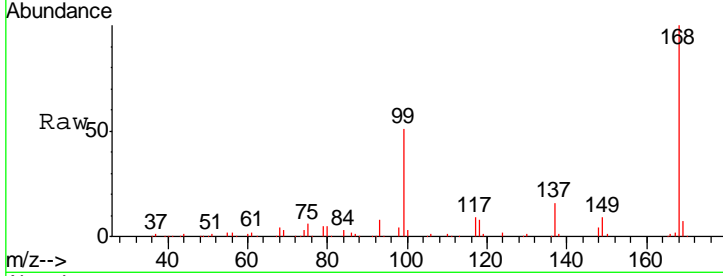
#1
 Pentafluorobenzene
 Concen: 50.00 ug/l
 RT: 5.67 min Scan# 740
 Delta R.T. 0.01 min
 Lab File: VX006069.D
 Acq: 17 Nov 2018 15:32

Instrument :
 MSVOA_X
 ClientSampled :
 MW-2DL

Tgt Ion: 168 Resp: 130269
 Ion Ratio Lower Upper
 168 100
 99 51.2 40.7 61.1

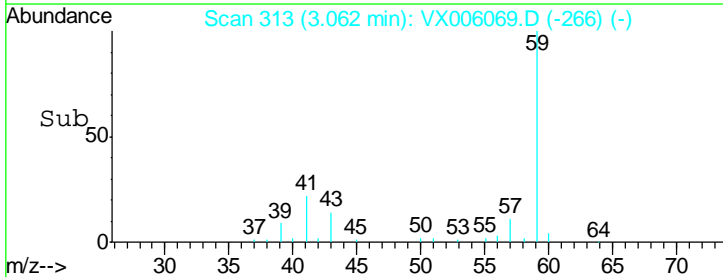
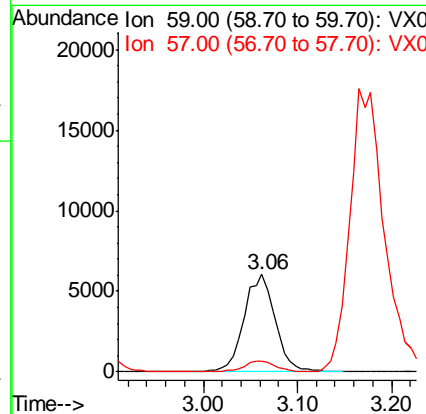
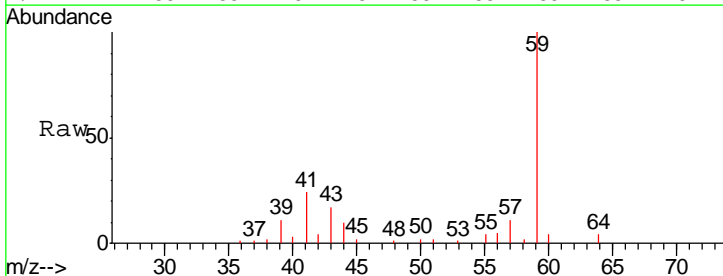
Manual Integrations
 APPROVED

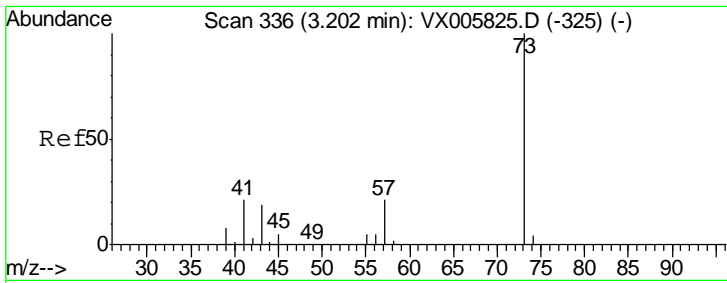
MMDadoda
 11/19/2018 9:24:50 AM



#11
 Tert butyl alcohol
 Concen: 32.72 ug/l
 RT: 3.06 min Scan# 313
 Delta R.T. -0.01 min
 Lab File: VX006069.D
 Acq: 17 Nov 2018 15:32

Tgt Ion: 59 Resp: 14038
 Ion Ratio Lower Upper
 59 100
 57 10.9 8.5 12.7





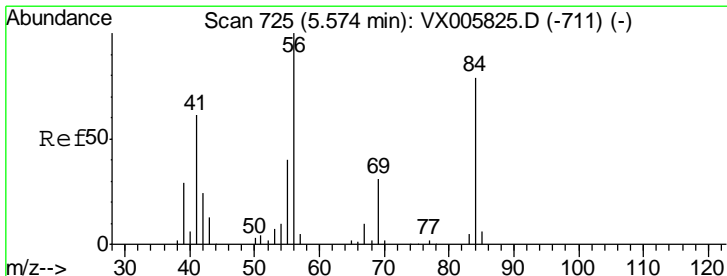
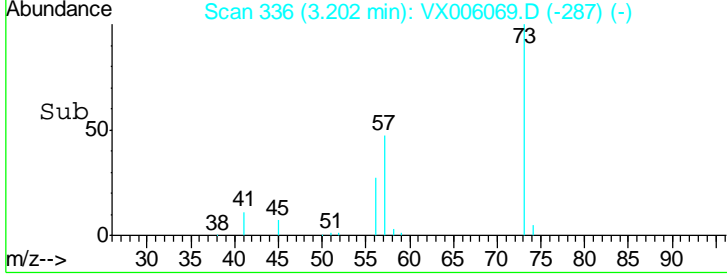
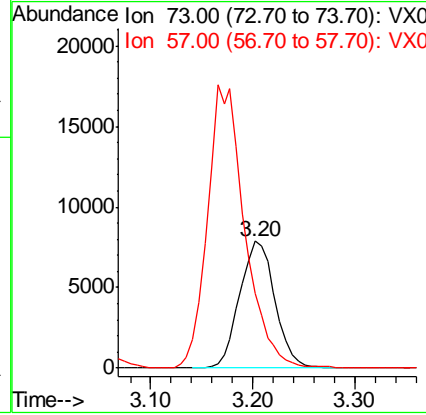
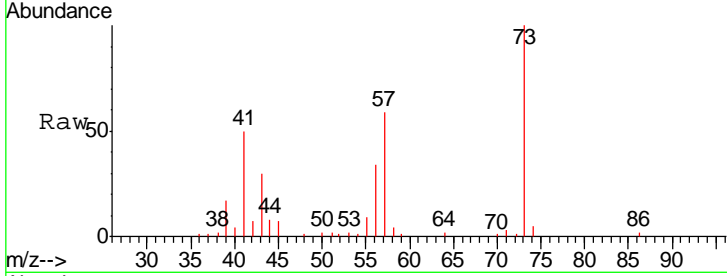
#19
 Methyl tert-butyl Ether
 Concen: 4.83 ug/l
 RT: 3.20 min Scan# 336
 Delta R.T. -0.00 min
 Lab File: VX006069.D
 Acq: 17 Nov 2018 15:32

Instrument :
 MSVOA_X
 ClientSampled :
 MW-2DL

Tgt Ion: 73 Resp: 18973
 Ion Ratio Lower Upper
 73 100
 57 57.8 18.8 28.2#

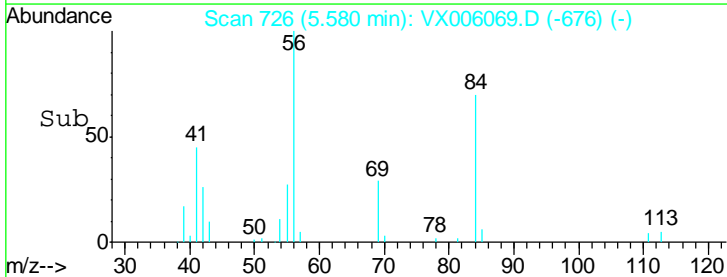
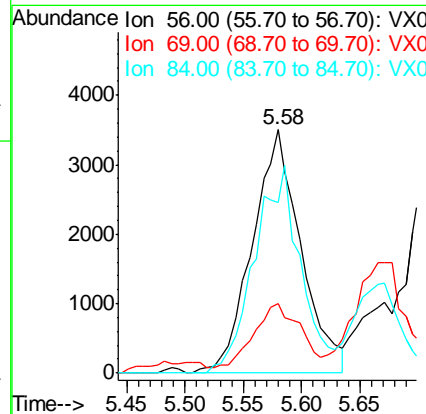
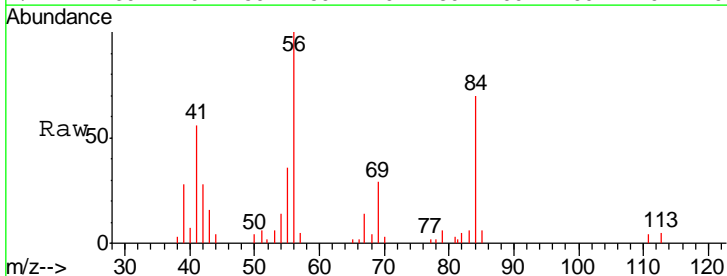
Manual Integrations
 APPROVED

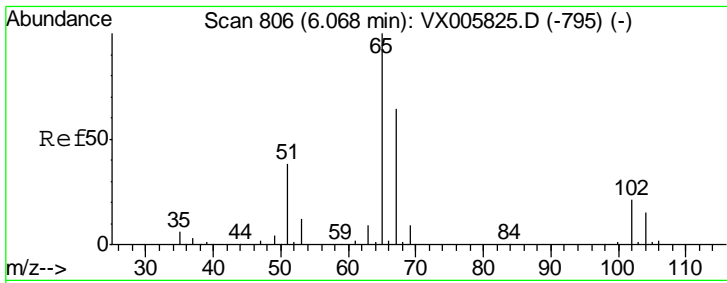
MMDadoda
 11/19/2018 9:24:50 AM



#31
 Cyclohexane
 Concen: 4.86 ug/l
 RT: 5.58 min Scan# 726
 Delta R.T. 0.01 min
 Lab File: VX006069.D
 Acq: 17 Nov 2018 15:32

Tgt Ion: 56 Resp: 10130
 Ion Ratio Lower Upper
 56 100
 69 24.2 22.6 34.0
 84 70.3 62.7 94.1





#33
 1,2-Dichloroethane-d4
 Concen: 51.45 ug/l
 RT: 6.06 min Scan# 805
 Delta R.T. -0.01 min
 Lab File: VX006069.D
 Acq: 17 Nov 2018 15:32

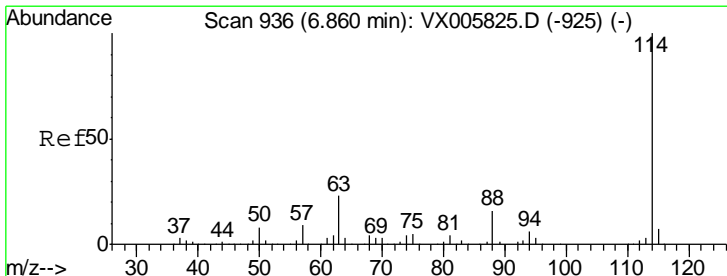
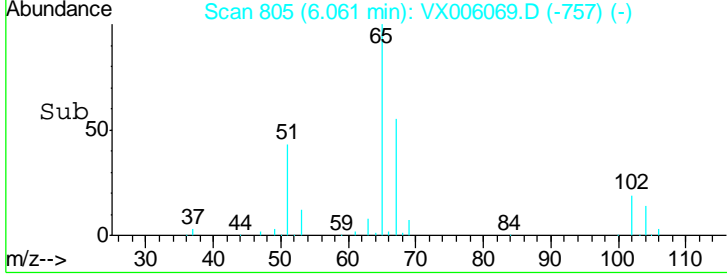
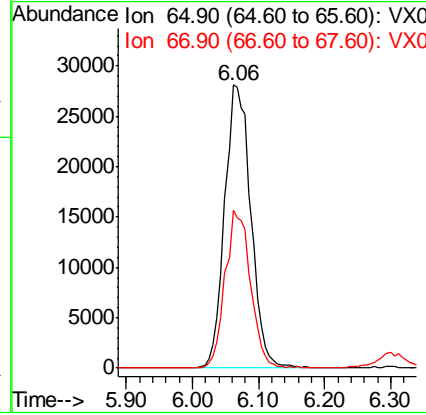
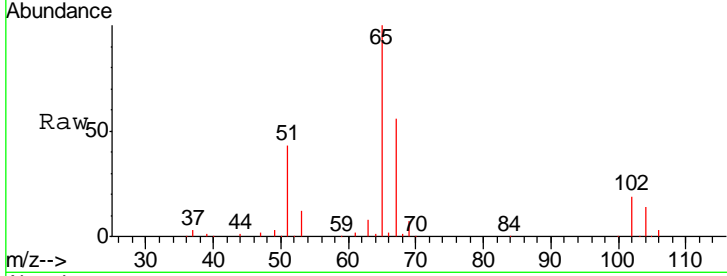
Instrument :
 MSVOA_X
 ClientSampled :
 MW-2DL

Tgt Ion: 65 Resp: 77048

Ion	Ratio	Lower	Upper
65	100		
67	54.1	0.0	105.0

Manual Integrations
 APPROVED

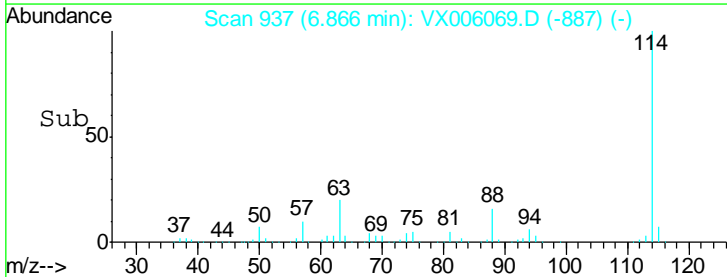
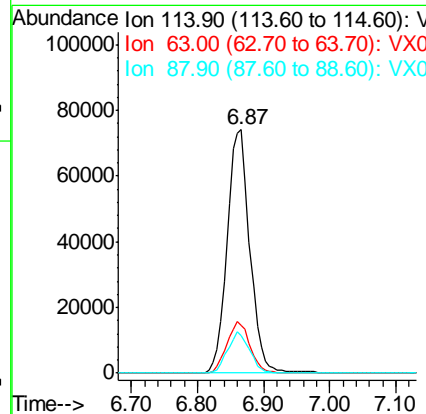
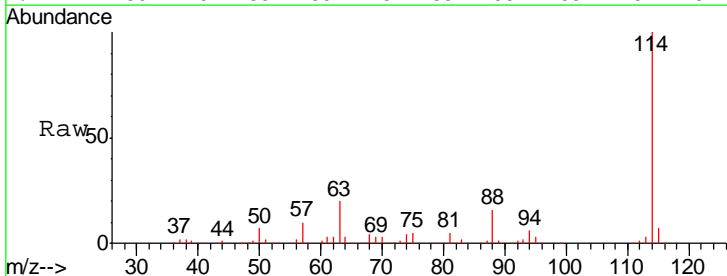
MMDadoda
 11/19/2018 9:24:50 AM

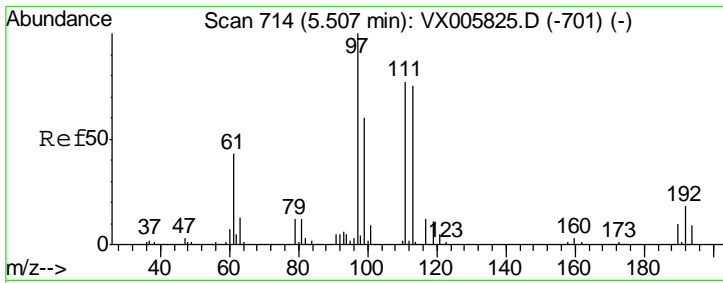


#34
 1,4-Difluorobenzene
 Concen: 50.00 ug/l
 RT: 6.87 min Scan# 937
 Delta R.T. 0.01 min
 Lab File: VX006069.D
 Acq: 17 Nov 2018 15:32

Tgt Ion: 114 Resp: 176931

Ion	Ratio	Lower	Upper
114	100		
63	19.8	0.0	42.8
88	15.6	0.0	31.2





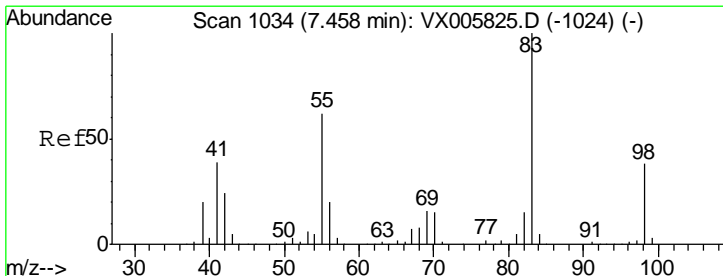
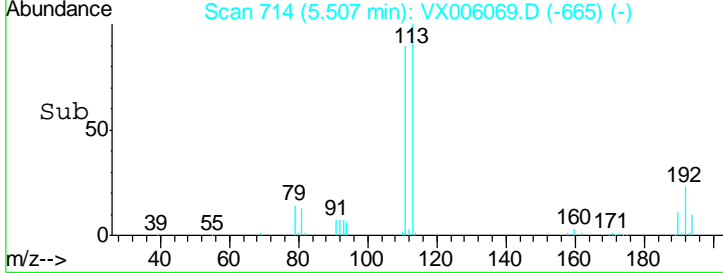
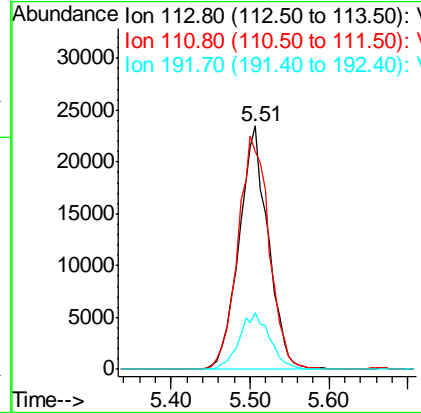
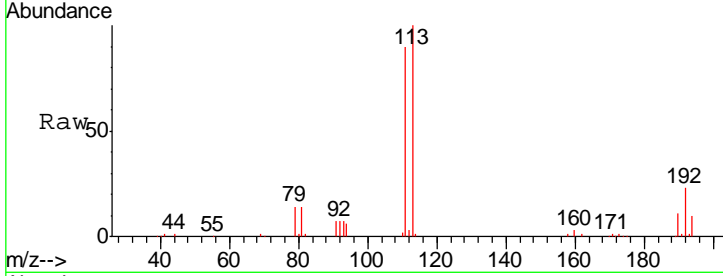
#35
 Dibromofluoromethane
 Concen: 50.14 ug/l
 RT: 5.51 min Scan# 714
 Delta R.T. -0.00 min
 Lab File: VX006069.D
 Acq: 17 Nov 2018 15:32

Instrument :
 MSVOA_X
 ClientSampled :
 MW-2DL

Tgt Ion	Resp	Lower	Upper
113	60333		
111	102.6	82.3	123.5
192	24.4	17.9	26.9

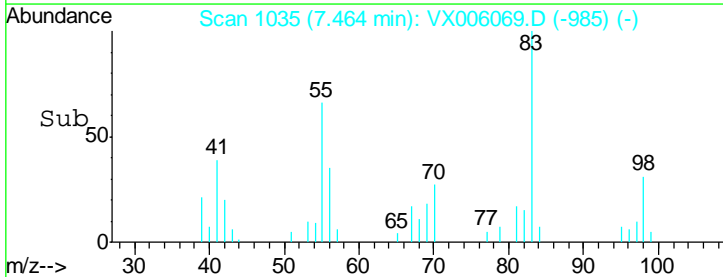
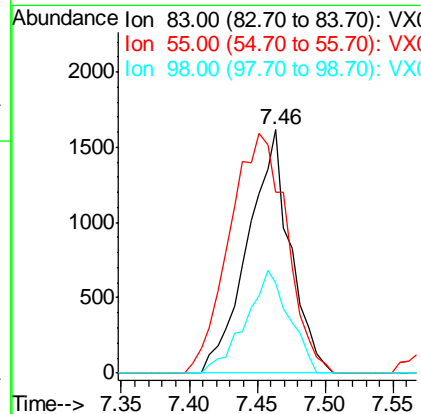
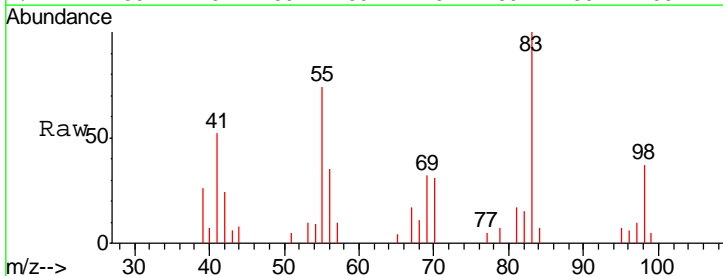
Manual Integrations
 APPROVED

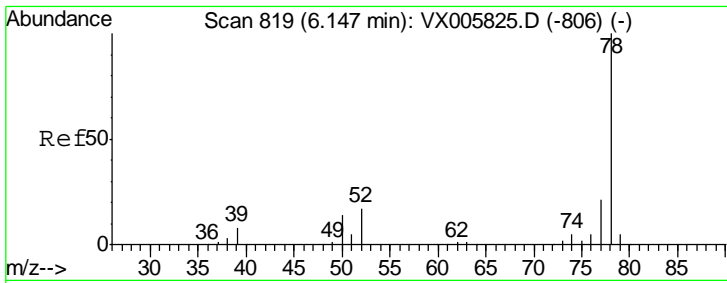
MMDadoda
 11/19/2018 9:24:50 AM



#39
 Methylcyclohexane
 Concen: 2.05 ug/l
 RT: 7.46 min Scan# 1035
 Delta R.T. 0.01 min
 Lab File: VX006069.D
 Acq: 17 Nov 2018 15:32

Tgt Ion	Resp	Lower	Upper
83	3537		
55	74.3	63.7	95.5
98	36.7	36.2	54.2



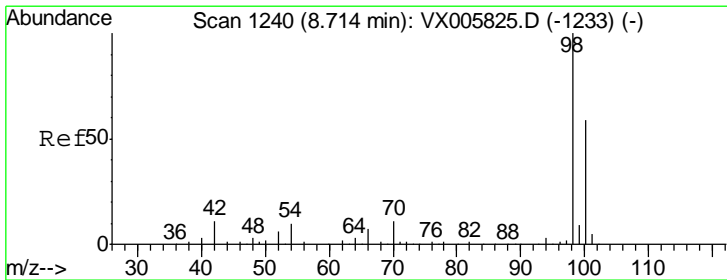
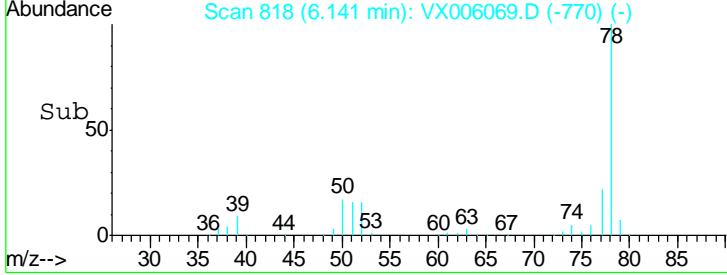
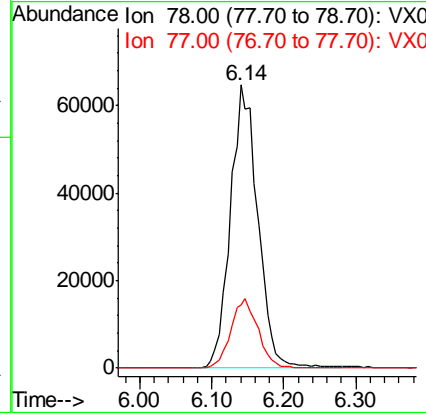
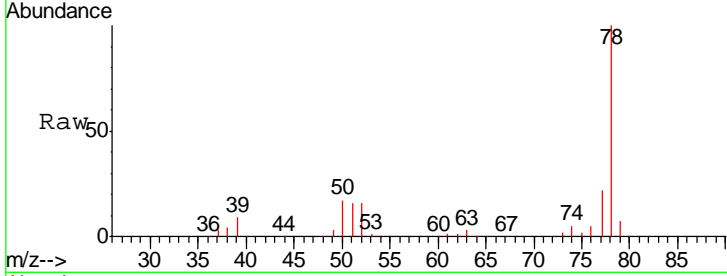


#40
Benzene
Concen: 34.55 ug/l
RT: 6.14 min Scan# 818
Delta R.T. -0.01 min
Lab File: VX006069.D
Acq: 17 Nov 2018 15:32

Instrument : MSVOA_X
ClientSampled : MW-2DL

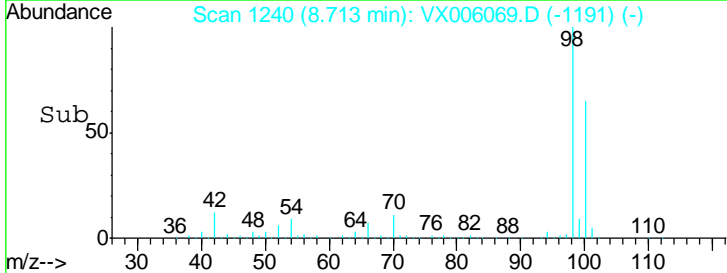
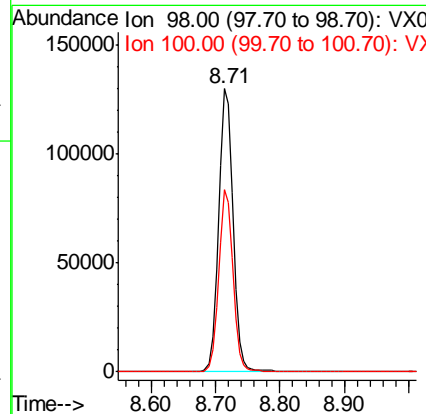
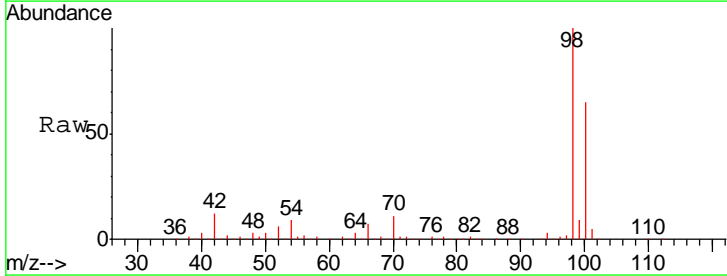
Tgt Ion	Resp	Lower	Upper
78	171811		
77	22.3	18.4	27.6

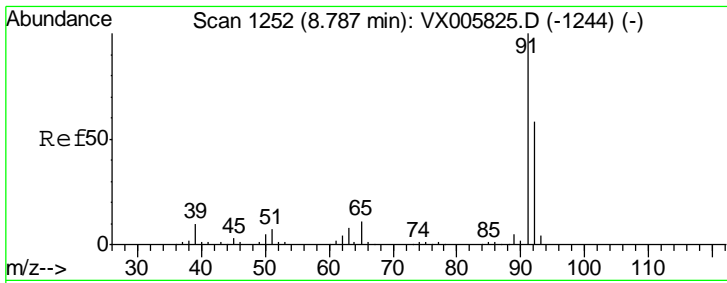
Manual Integrations APPROVED
MMDadoda
11/19/2018 9:24:50 AM



#50
Toluene-d8
Concen: 51.68 ug/l
RT: 8.71 min Scan# 1240
Delta R.T. -0.00 min
Lab File: VX006069.D
Acq: 17 Nov 2018 15:32

Tgt Ion	Resp	Lower	Upper
98	206741		
100	63.5	51.3	76.9



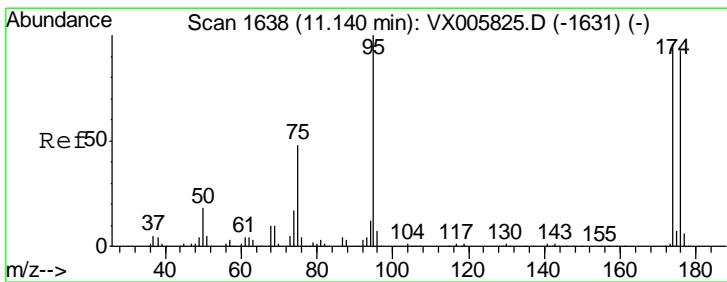
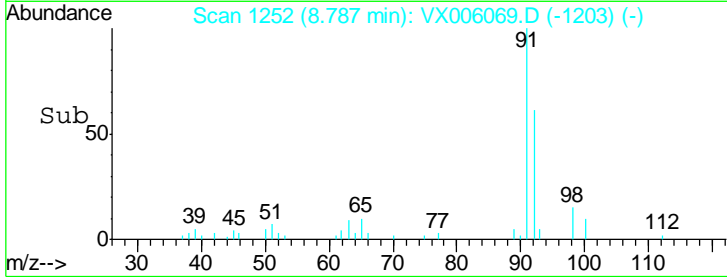
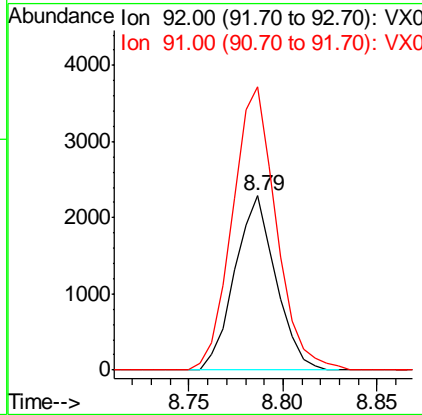
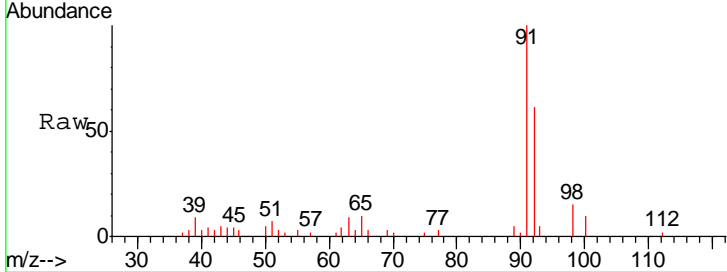


#52
 Toluene
 Concen: 1.24 ug/l
 RT: 8.79 min Scan# 1252
 Delta R.T. -0.00 min
 Lab File: VX006069.D
 Acq: 17 Nov 2018 15:32

Instrument :
 MSVOA_X
 ClientSampled :
 MW-2DL

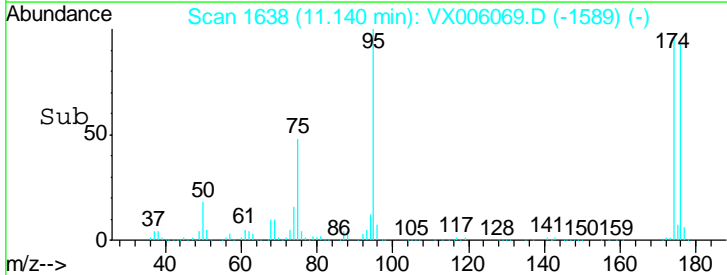
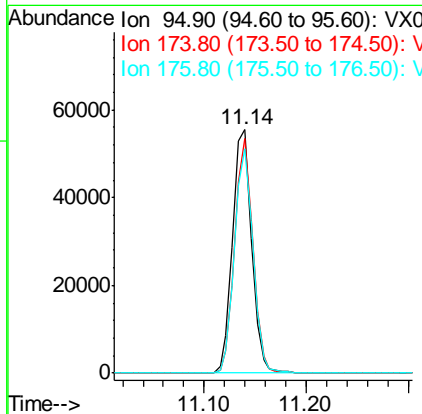
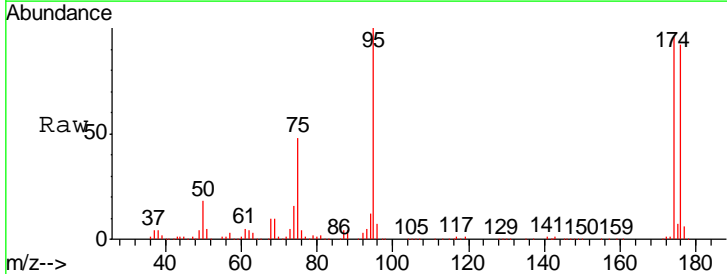
Tgt Ion	Resp	Lower	Upper
92	3447		
92	100		
91	173.5	140.4	210.6

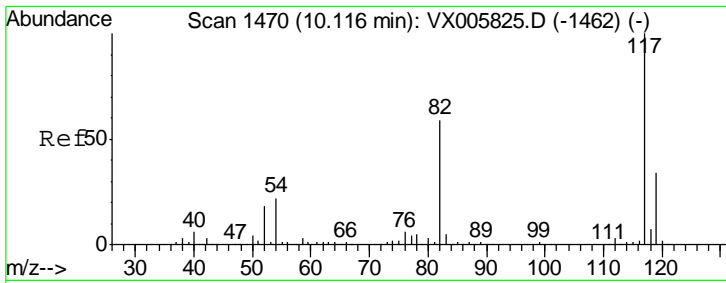
Manual Integrations
APPROVED
 MMDadoda
 11/19/2018 9:24:50 AM



#62
 4-Bromofluorobenzene
 Concen: 49.75 ug/l
 RT: 11.14 min Scan# 1638
 Delta R.T. -0.00 min
 Lab File: VX006069.D
 Acq: 17 Nov 2018 15:32

Tgt Ion	Resp	Lower	Upper
95	71556		
95	100		
174	91.6	0.0	184.4
176	89.3	0.0	177.4





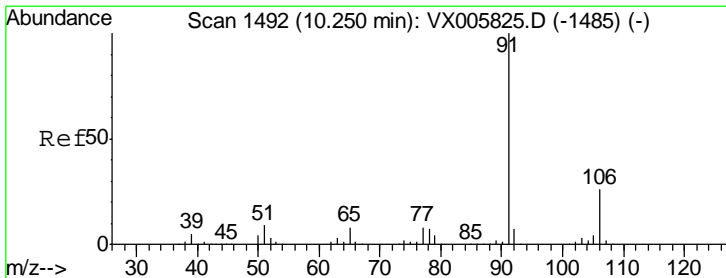
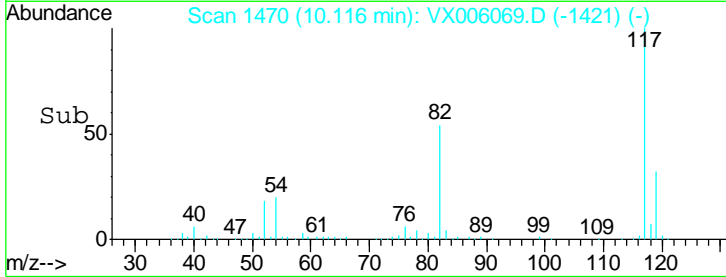
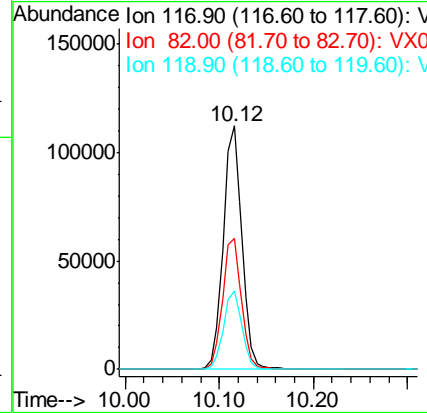
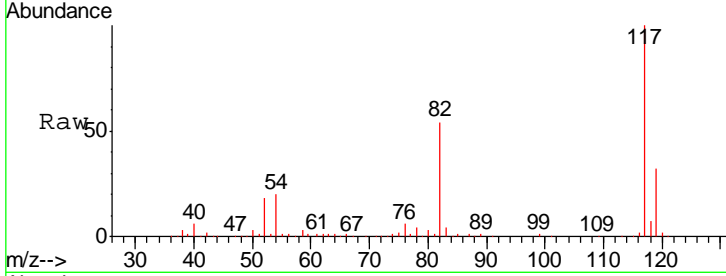
#63
 Chlorobenzene-d5
 Concen: 50.00 ug/l
 RT: 10.12 min Scan# 1470
 Delta R.T. -0.00 min
 Lab File: VX006069.D
 Acq: 17 Nov 2018 15:32

Instrument :
 MSVOA_X
 ClientSampled :
 MW-2DL

Tgt Ion	Resp	Lower	Upper
117	154022		
82	53.6	44.1	66.1
119	32.2	26.2	39.2

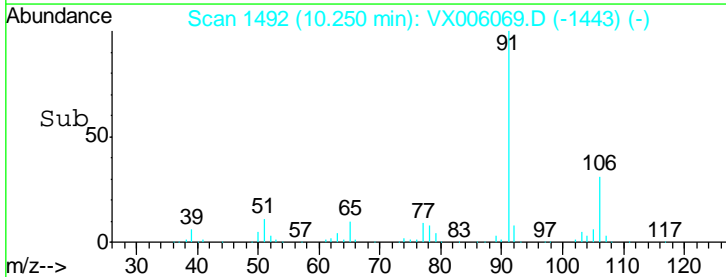
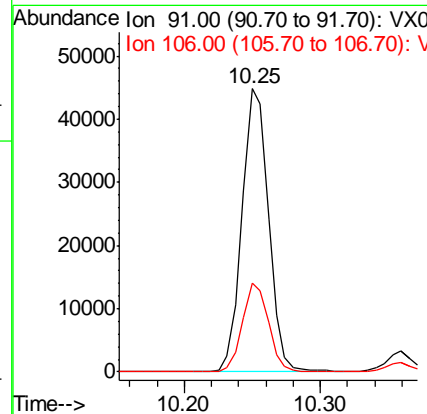
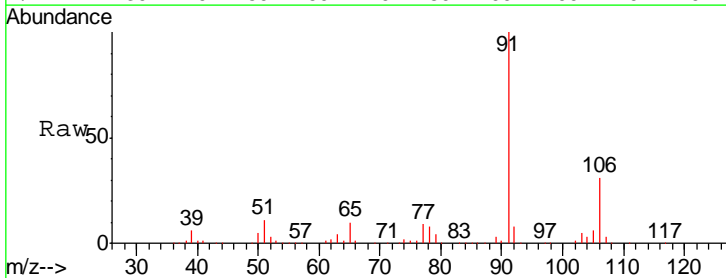
Manual Integrations
 APPROVED

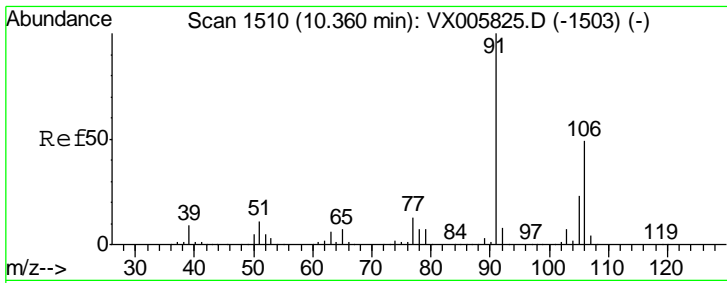
MMDadoda
 11/19/2018 9:24:50 AM



#67
 Ethyl Benzene
 Concen: 12.35 ug/l
 RT: 10.25 min Scan# 1492
 Delta R.T. -0.00 min
 Lab File: VX006069.D
 Acq: 17 Nov 2018 15:32

Tgt Ion	Resp	Lower	Upper
91	61085		
106	31.4	24.4	36.6





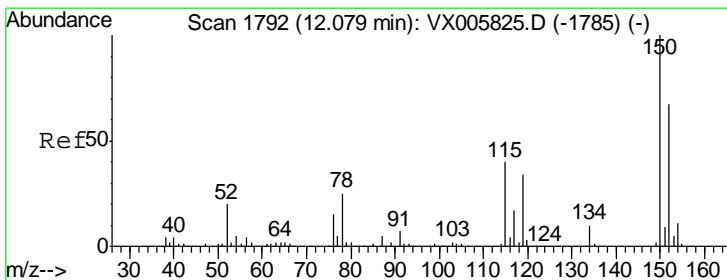
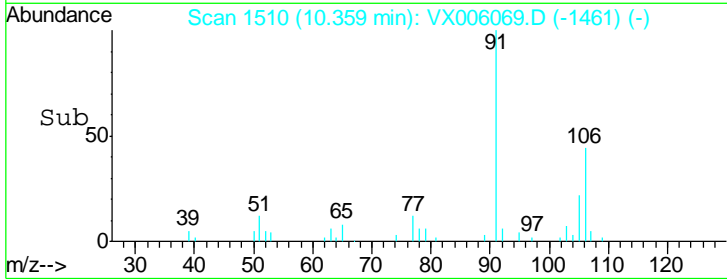
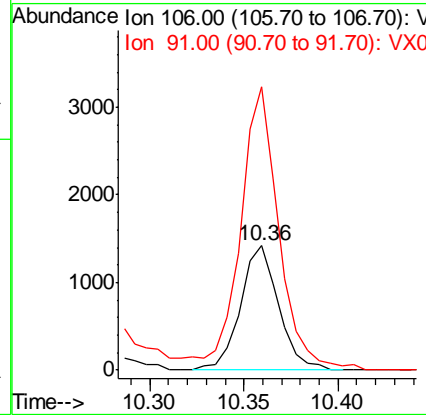
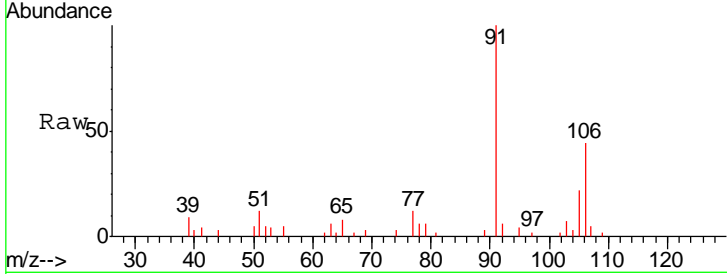
#68
 m/p-Xylenes
 Concen: 1.05 ug/l
 RT: 10.36 min Scan# 1510
 Delta R.T. -0.00 min
 Lab File: VX006069.D
 Acq: 17 Nov 2018 15:32

Instrument : MSVOA_X
 ClientSampled : MW-2DL

Tgt Ion	Resp	Lower	Upper
106	1991		
91	231.7	164.2	246.4

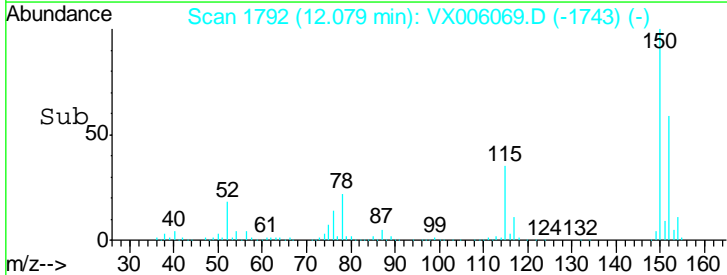
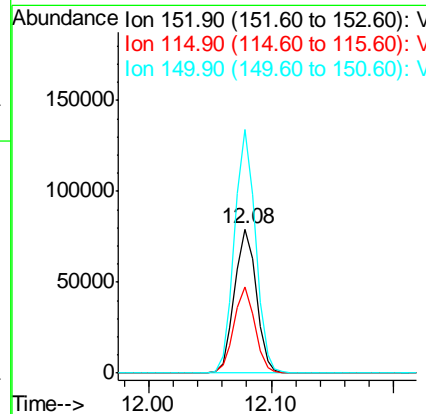
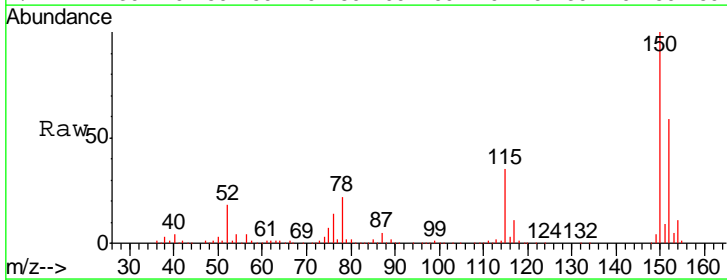
Manual Integrations
 APPROVED

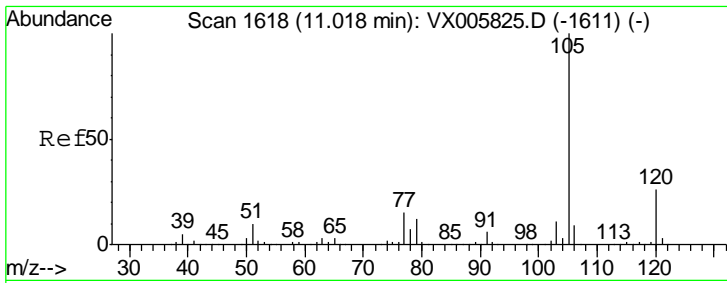
MMDadoda
 11/19/2018 9:24:50 AM



#72
 1,4-Dichlorobenzene-d4
 Concen: 50.00 ug/l
 RT: 12.08 min Scan# 1792
 Delta R.T. -0.00 min
 Lab File: VX006069.D
 Acq: 17 Nov 2018 15:32

Tgt Ion	Resp	Lower	Upper
152	97655		
115	56.9	39.4	118.1
150	162.6	0.0	346.4





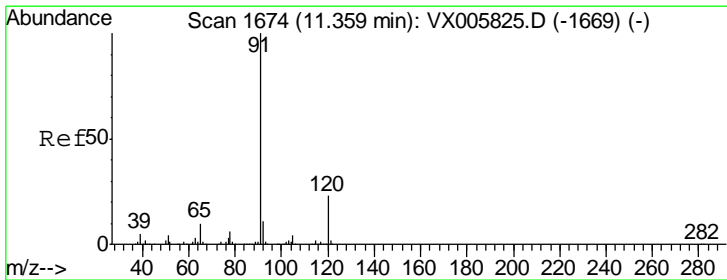
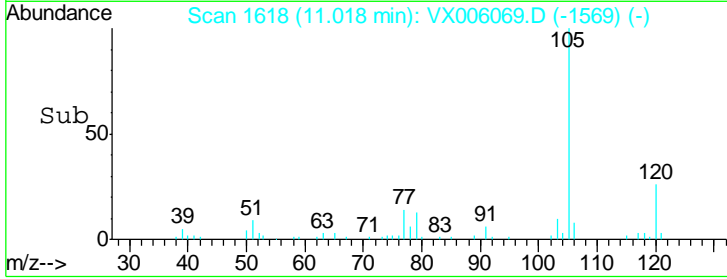
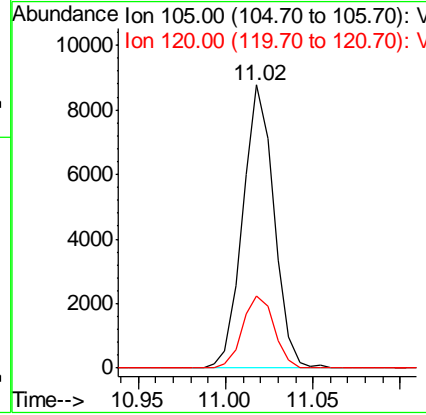
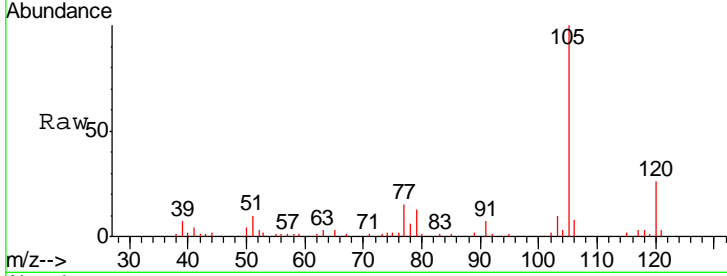
#73
 Isopropylbenzene
 Concen: 1.93 ug/l
 RT: 11.02 min Scan# 1618
 Delta R.T. -0.00 min
 Lab File: VX006069.D
 Acq: 17 Nov 2018 15:32

Instrument : MSVOA_X
 ClientSampled : MW-2DL

Tgt Ion	Resp	Lower	Upper
105	10888		
120	25.8	13.1	39.3

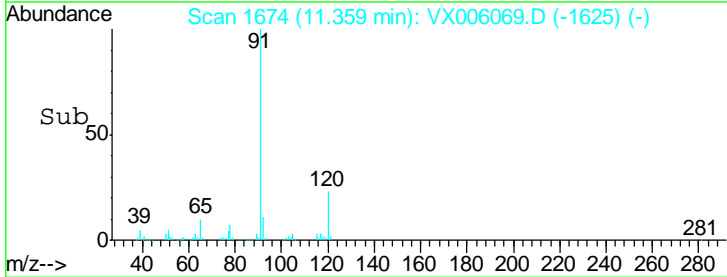
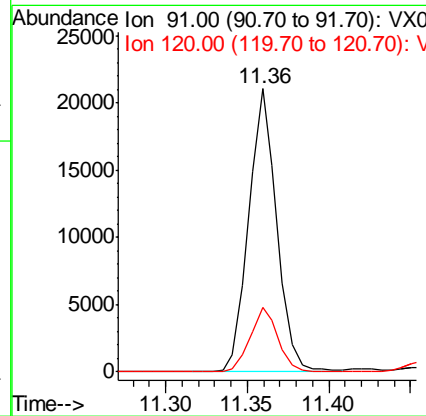
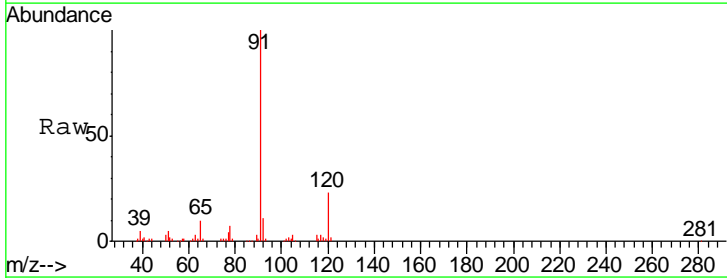
Manual Integrations
 APPROVED

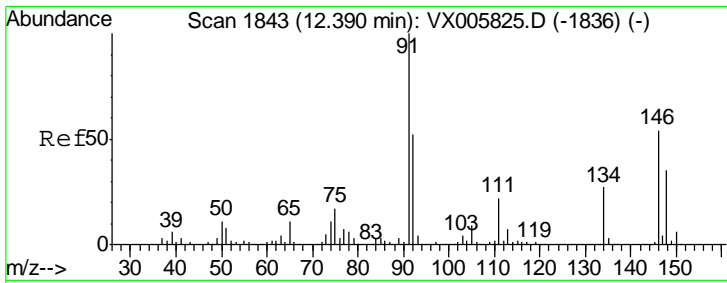
MMDadoda
 11/19/2018 9:24:50 AM



#78
 n-propylbenzene
 Concen: 3.79 ug/l
 RT: 11.36 min Scan# 1674
 Delta R.T. -0.00 min
 Lab File: VX006069.D
 Acq: 17 Nov 2018 15:32

Tgt Ion	Resp	Lower	Upper
91	25241		
120	22.5	11.9	35.5





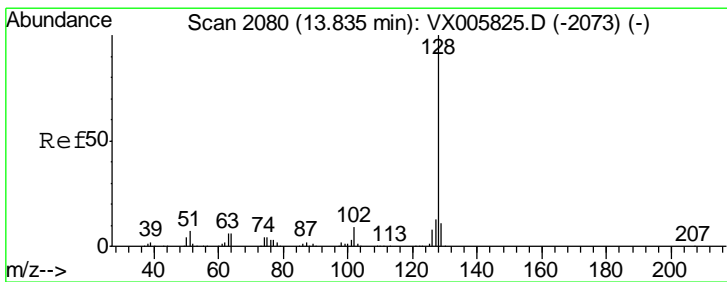
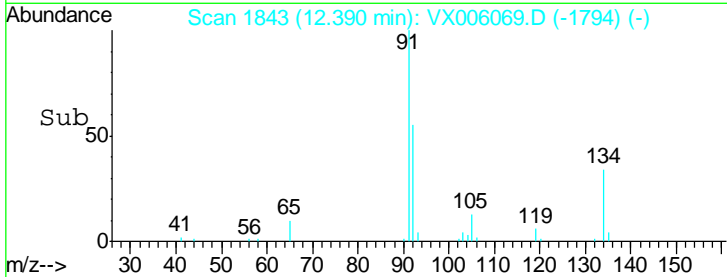
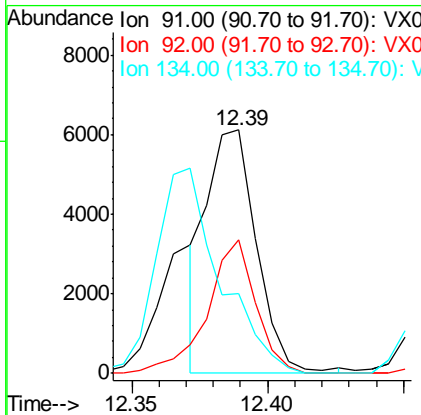
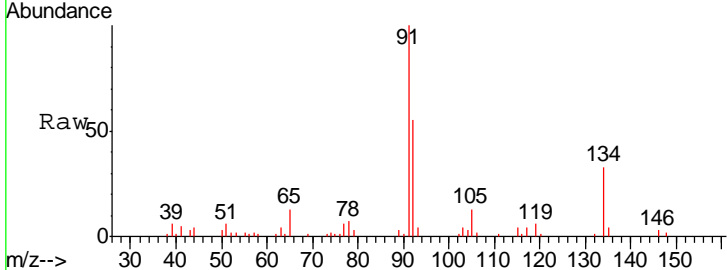
#89
 n-Butylbenzene
 Concen: 1.62 ug/l m
 RT: 12.39 min Scan# 1843
 Delta R.T. -0.00 min
 Lab File: VX006069.D
 Acq: 17 Nov 2018 15:32

Instrument : MSVOA_X
 ClientSampled : MW-2DL

Tgt Ion	Resp	Lower	Upper
91	100		
92	53.2	26.1	78.2
134	107.0	13.1	39.3#

Manual Integrations
 APPROVED

MMDadoda
 11/19/2018 9:24:50 AM



#95
 Naphthalene
 Concen: 5.01 ug/l
 RT: 13.83 min Scan# 2080
 Delta R.T. 0.00 min
 Lab File: VX006069.D
 Acq: 17 Nov 2018 15:32

Tgt Ion	Resp	Lower	Upper
128	100		
127	13.3	10.4	15.6
129	12.4	8.7	13.1

